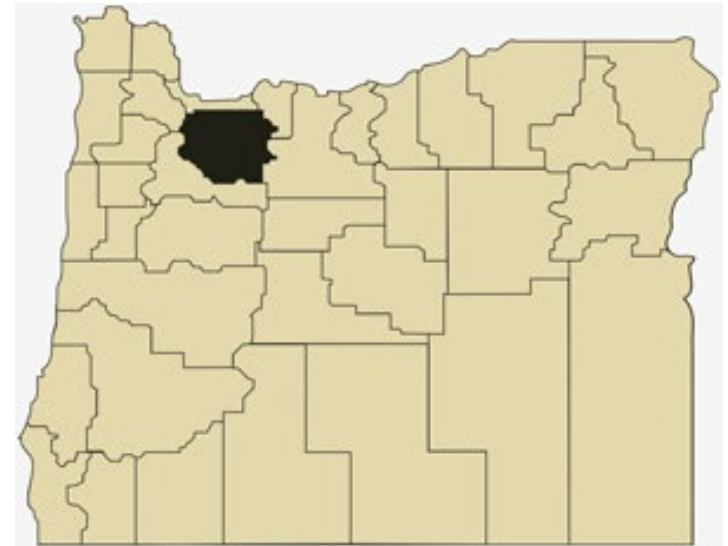


Clackamas County Overview

House and Senate Committees on Redistricting

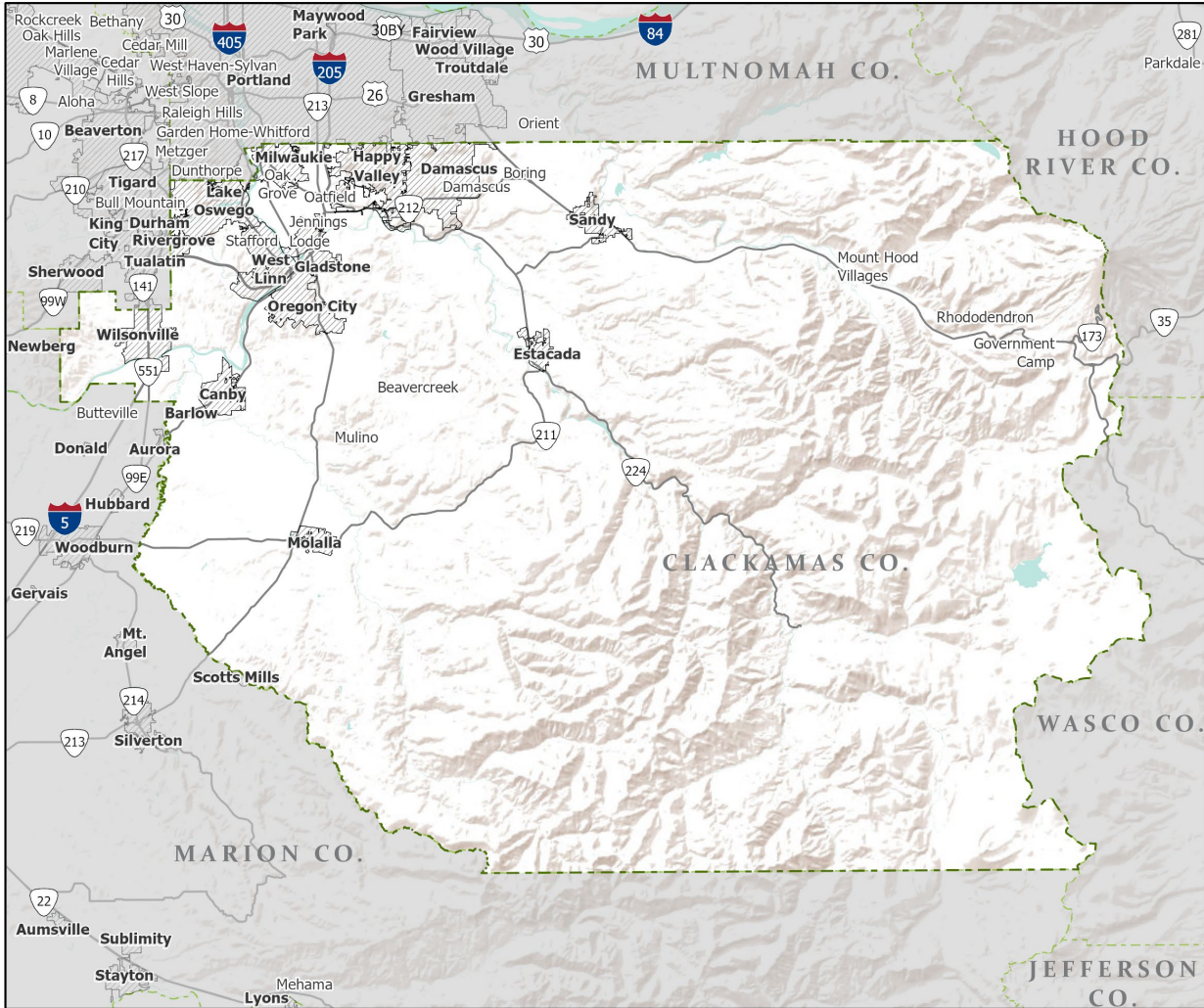
June 15, 2021

July 1, 2020 population estimate	426,515
Population rank	3rd
Share of state population	10.0%
Density (per square mile)	226.4
Density rank	4th
Area (square miles)	1,884
Area rank	18th
Share of state area	1.9%



Sources: PSU Population Research Center; Oregon Blue Book.

Highways: Clackamas County



-  Counties
 Incorporated Cities
 Highways

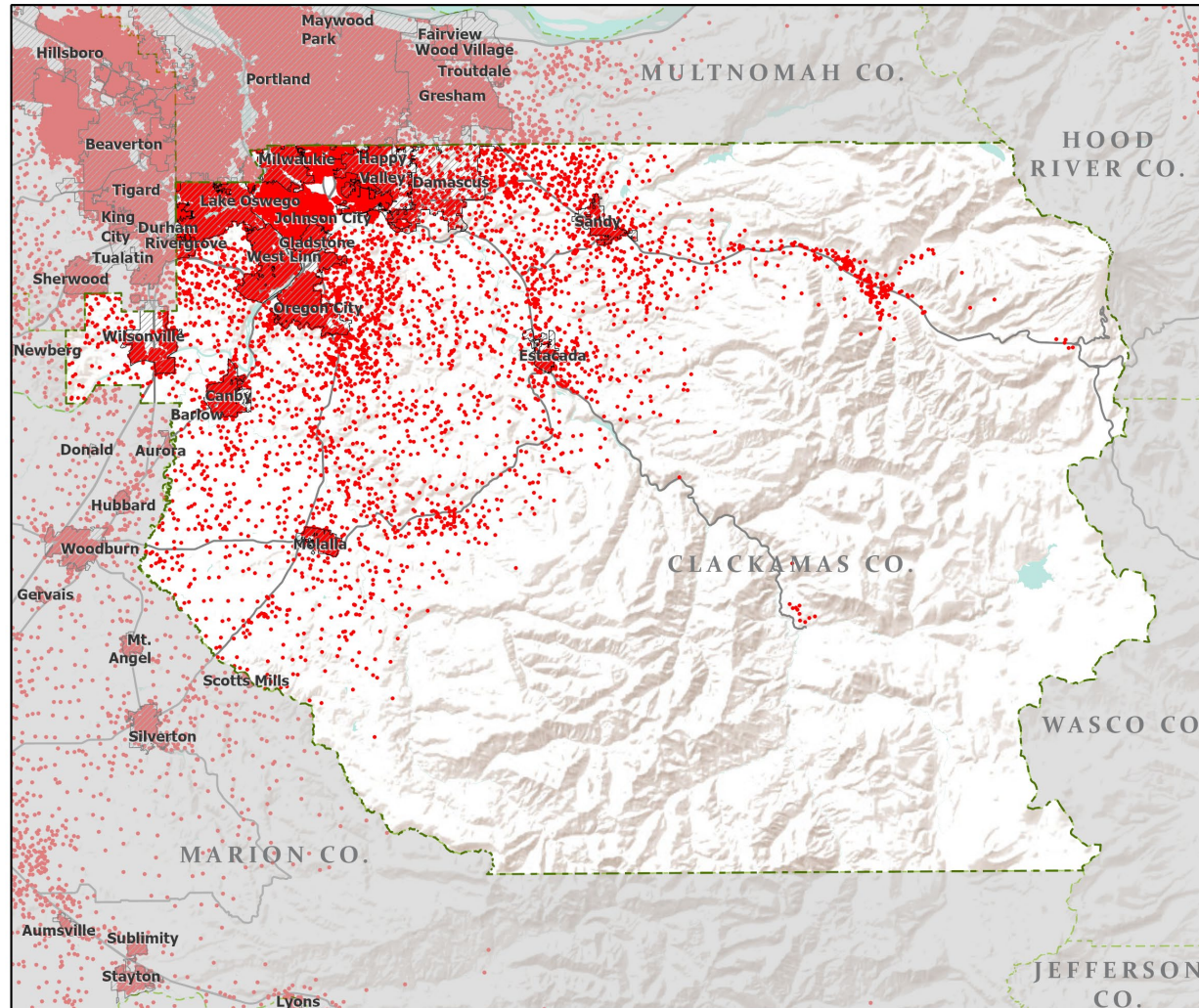


Portland State University,
Population Research Center,
May 2021.
www.pdx.edu/prc

Sources: Esri, USGS, NOAA
State of Oregon GEO;
Oregon Dept. of
Transportation.



Population: Clackamas County



- Counties
- Incorporated Cities
- Highways
- 2010 POPULATION
- 1 Dot = 25 persons

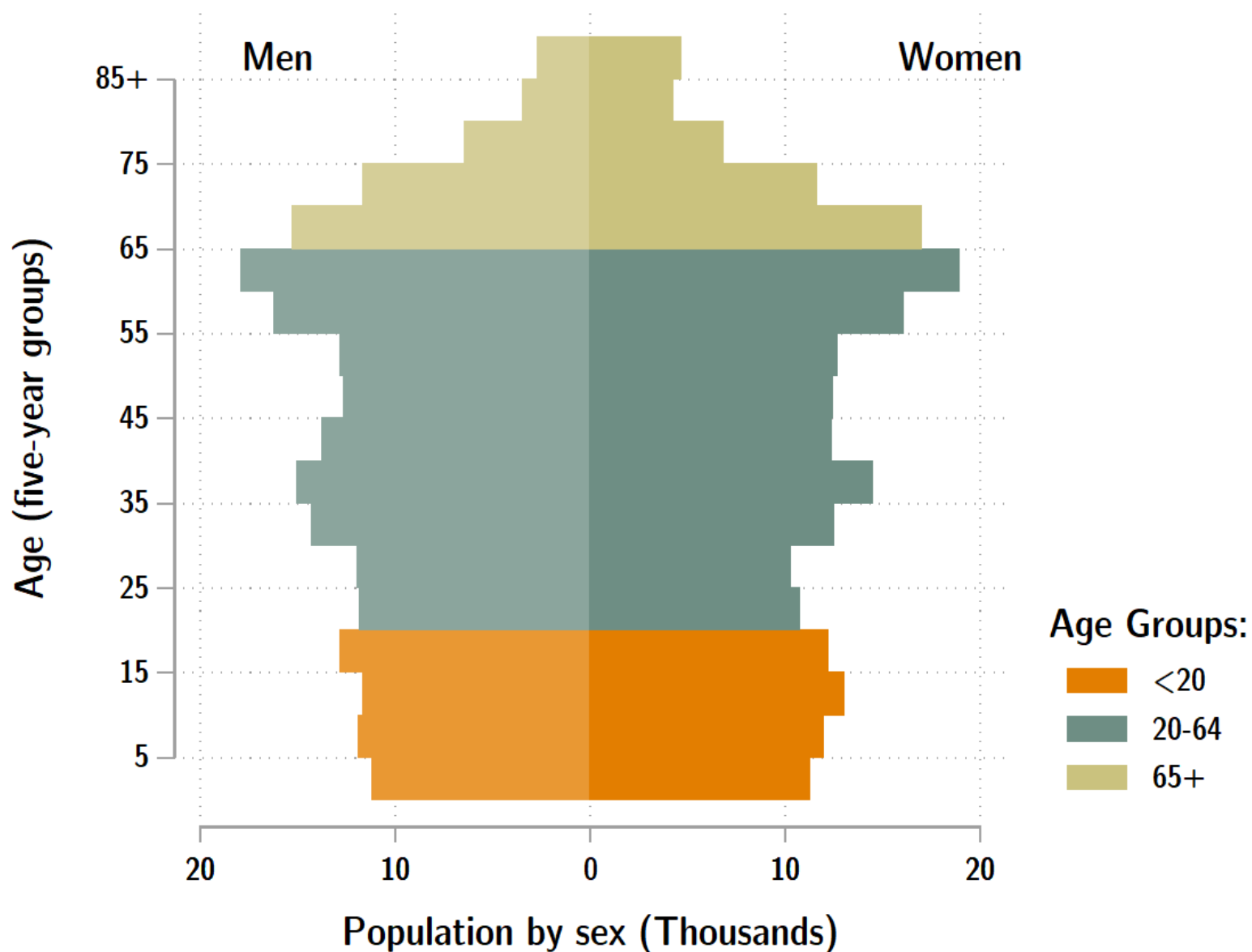


Portland State University,
Population Research Center,
May 2021.
www.pdx.edu/prc

Sources: Esri, USGS, NOAA
State of Oregon GEO;
Oregon Dept. of
Transportation.

0 40 Miles

Clackamas population by age & sex: 2020



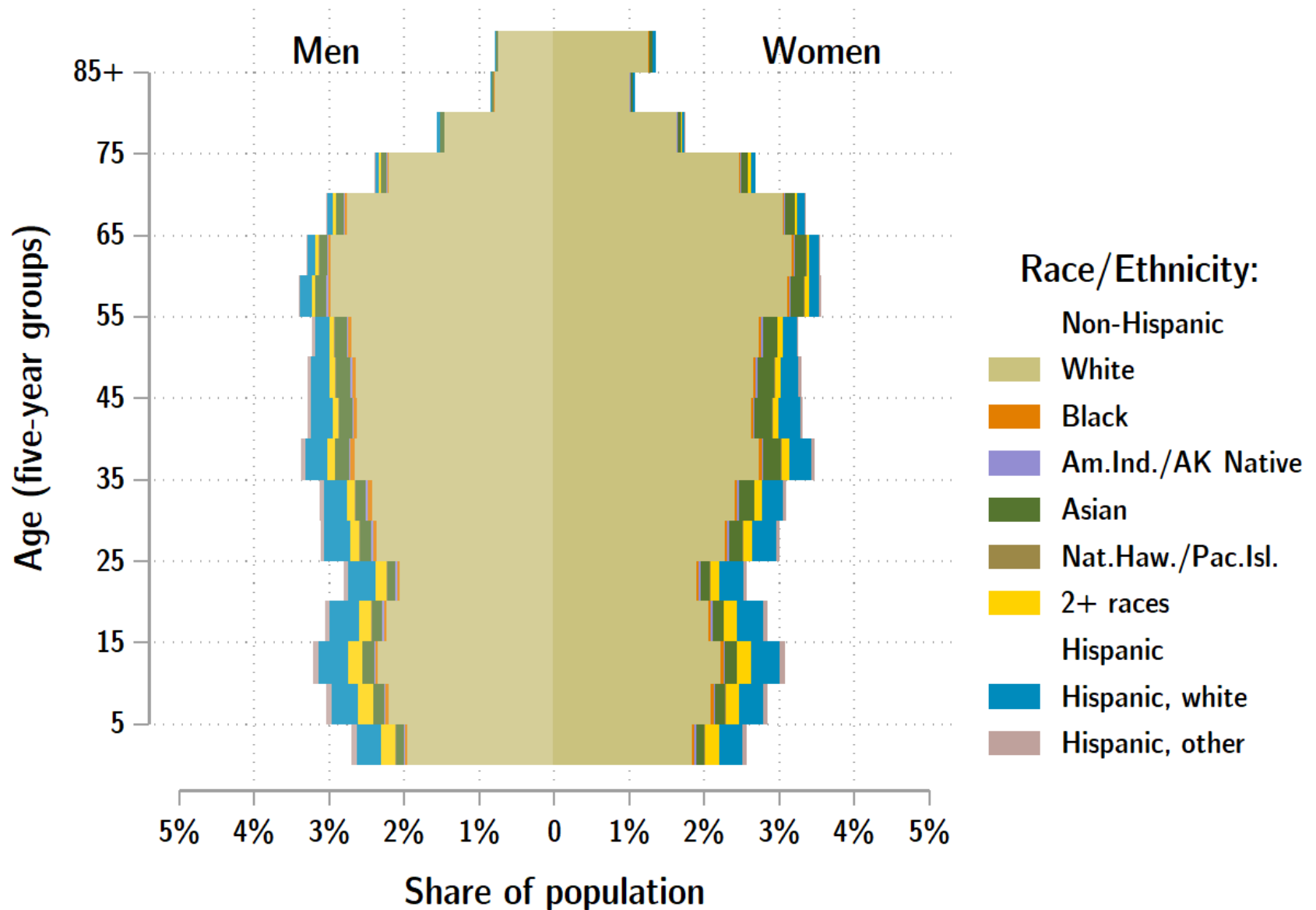
Source: Estimates by Population Research Center, PSU

Age Distribution, Clackamas County

Age Group	2020 Estimate	2020 Percent of Total	Oregon 2020 Percent of Total
Total population	426,515	100.0%	100.0%
Under age 5	22,488	5.3%	5.4%
Age 5 to 17	64,474	15.1%	14.9%
Age 18 to 64	255,709	60.0%	61.1%
Age 65 and over	83,843	19.7%	18.6%

Source: PSU Population Research Center July 1, 2020 Population Estimates

Clackamas County population by age & sex: 2019



Source: Estimates by US Census Bureau

Race and Ethnicity, Clackamas County

	2010 Census	2010 Census Percent	2015-19 ACS Estimate	2015-19 ACS Percent	Oregon 2015-19 ACS Percent
HISPANIC OR LATINO AND RACE					
Total population	375,992	100.0%	410,463	100.0%	100.0%
Hispanic or Latino	29,138	7.7%	35,666	8.7%*	13.0%
Not Hispanic or Latino	346,854	92.3%	374,797	91.3%*	87.0%
White alone	317,648	84.5%	336,220	81.9%*	75.7%
Black or African American alone	2,761	0.7%	3,613	0.9%*	1.8%
American Indian and Alaska Native alone	2,340	0.6%	2,496	0.6%	0.9%
Asian alone	13,575	3.6%	17,280	4.2%*	4.3%
Native Hawaiian and Other Pacific Islander alone	815	0.2%	913	0.2%	0.4%
Some Other Race alone	438	0.1%	536	0.1%	0.1%
Two or More Races	9,277	2.5%	13,739	3.3%*	3.7%

	2010 Census	2010 Census Percent	2015-19 ACS Estimate	2015-19 ACS Percent	Oregon 2015-19 ACS Percent
RACE ALONE OR IN COMBINATION WITH ONE OR MORE OTHER RACES**					
White	342,641	91.1%	375,076	91.4%	88.8%
Black or African American	5,342	1.4%	7,240	1.8%*	2.9%
American Indian and Alaska Native	7,068	1.9%	8,069	2.0%	3.1%
Asian	18,167	4.8%	24,974	6.1%*	6.0%
Native Hawaiian and Other Pacific Islander	1,934	0.5%	2,960	0.7%*	0.8%
Some Other Race	13,740	3.7%	10,566	2.6%*	3.6%

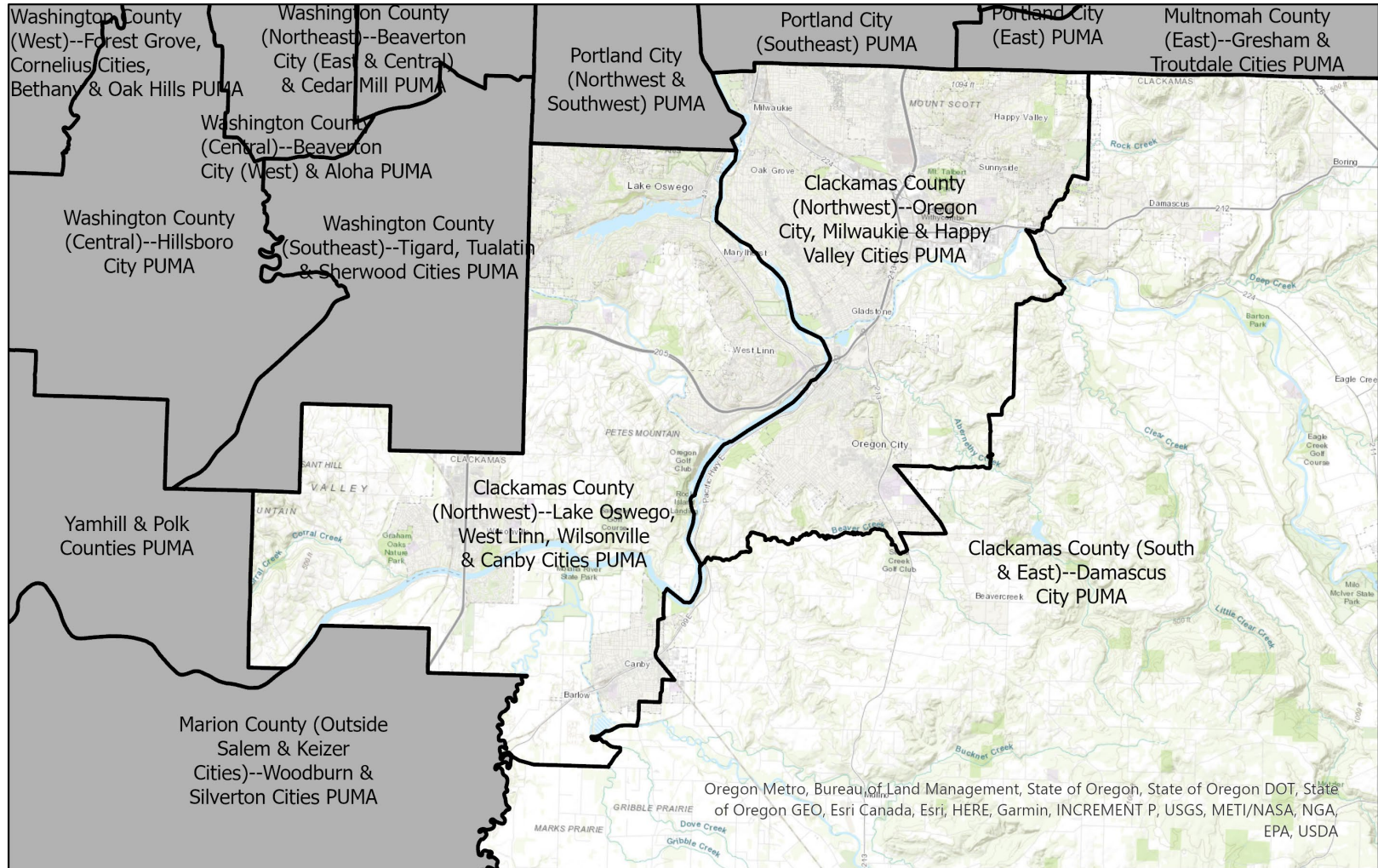
Source: U.S. Census Bureau, 2010 Census and 2019 5-year American Community Survey estimates.

* Difference between 2010 Census and 2015-19 ACS is statistically significant at the 90% confidence level.

** Total may add to more than 100% due to persons identifying as more than one race.

Clackamas County Public Use Microdata Areas

(Groups of census tracts with 100,000 population minimum)



A horizontal scale bar with a black background and white rectangular segments. It is labeled '0' at the left end and '10' at the right end, with the word 'Miles' at the far right.

Source: U.S. Census Bureau.

Prepared by Portland State University
Population Research Center.

Race and Ethnicity, Clackamas County (South & East)--Damascus City PUMA

1317

	2010 Census	2010 Census Percent	2015-19 ACS Estimate	2015-19 ACS Percent	Oregon 2015-19 ACS Percent
HISPANIC OR LATINO AND RACE					
Total population	102,194	100.0%	108,674	100.0%	100.0%
Hispanic or Latino	6,437	6.3%	7,753	7.1%*	13.0%
Not Hispanic or Latino	95,757	93.7%	100,921	92.9%*	87.0%
White alone	90,940	89.0%	95,574	87.9%*	75.7%
Black or African American alone	354	0.3%	416	0.4%	1.8%
American Indian and Alaska Native alone	764	0.7%	517	0.5%*	0.9%
Asian alone	1,364	1.3%	1,992	1.8%	4.3%
Native Hawaiian and Other Pacific Islander alone	145	0.1%	37	0.0%*	0.4%
Some Other Race alone	95	0.1%	43	0.0%	0.1%
Two or More Races	2,095	2.1%	2,342	2.2%	3.7%

	2010 Census	2010 Census Percent	2015-19 ACS Estimate	2015-19 ACS Percent	Oregon 2015-19 ACS Percent
RACE ALONE OR IN COMBINATION WITH ONE OR MORE OTHER RACES**					
White	96,371	94.3%	103,769	95.5%*	88.8%
Black or African American	750	0.7%	1,032	0.9%	2.9%
American Indian and Alaska Native	2,166	2.1%	2,280	2.1%	3.1%
Asian	2,185	2.1%	2,852	2.6%	6.0%
Native Hawaiian and Other Pacific Islander	389	0.4%	395	0.4%	0.8%
Some Other Race	3,170	3.1%	1,406	1.3%*	3.6%

Source: U.S. Census Bureau, 2010 Census and 2019 5-year American Community Survey estimates. PUMAs are Public Use Microdata Areas, groups of census tracts with a population of 100,000 or greater.

* Difference between 2010 Census and 2015-19 ACS is statistically significant at the 90% confidence level.

** Total may add to more than 100% due to persons identifying as more than one race.

Race and Ethnicity, Clackamas County (Northwest)--Oregon City, Milwaukie & Happy Valley Cities PUMA 1318

HISPANIC OR LATINO AND RACE	2010 Census	2010 Census Percent	2015-19 ACS Estimate	2015-19 ACS Percent	Oregon 2015-19 ACS Percent
Total population	164,682	100.0%	182,621	100.0%	100.0%
Hispanic or Latino	14,099	8.6%	17,340	9.5%*	13.0%
Not Hispanic or Latino	150,583	91.4%	165,281	90.5%*	87.0%
White alone	134,554	81.7%	144,762	79.3%*	75.7%
Black or African American alone	1,788	1.1%	1,938	1.1%	1.8%
American Indian and Alaska Native alone	1,101	0.7%	1,417	0.8%	0.9%
Asian alone	7,900	4.8%	9,294	5.1%	4.3%
Native Hawaiian and Other Pacific Islander alone	465	0.3%	457	0.3%	0.4%
Some Other Race alone	196	0.1%	342	0.2%	0.1%
Two or More Races	4,579	2.8%	7,071	3.9%*	3.7%

RACE ALONE OR IN COMBINATION WITH ONE OR MORE OTHER RACES**	2010 Census	2010 Census Percent	2015-19 ACS Estimate	2015-19 ACS Percent	Oregon 2015-19 ACS Percent
White	146,973	89.2%	164,185	89.9%*	88.8%
Black or African American	3,358	2.0%	4,010	2.2%	2.9%
American Indian and Alaska Native	3,447	2.1%	3,968	2.2%	3.1%
Asian	10,072	6.1%	13,226	7.2%*	6.0%
Native Hawaiian and Other Pacific Islander	1,029	0.6%	1,736	1.0%*	0.8%
Some Other Race	6,299	3.8%	5,586	3.1%*	3.6%

Source: U.S. Census Bureau, 2010 Census and 2019 5-year American Community Survey estimates. PUMAs are Public Use Microdata Areas, groups of census tracts with a population of 100,000 or greater.

* Difference between 2010 Census and 2015-19 ACS is statistically significant at the 90% confidence level.

** Total may add to more than 100% due to persons identifying as more than one race.

Race and Ethnicity, Clackamas County (Northwest)--Lake Oswego, West Linn, Wilsonville & Canby Cities PUMA 1319

HISPANIC OR LATINO AND RACE	2010 Census	2010 Census Percent	2015-19 ACS Estimate	2015-19 ACS Percent	Oregon 2015-19 ACS Percent
Total population	109,116	100.0%	119,168	100.0%	100.0%
Hispanic or Latino	8,602	7.9%	10,573	8.9%*	13.0%
Not Hispanic or Latino	100,514	92.1%	108,595	91.1%*	87.0%
White alone	92,154	84.5%	95,884	80.5%*	75.7%
Black or African American alone	619	0.6%	1,259	1.1%*	1.8%
American Indian and Alaska Native alone	475	0.4%	562	0.5%	0.9%
Asian alone	4,311	4.0%	5,994	5.0%*	4.3%
Native Hawaiian and Other Pacific Islander alone	205	0.2%	419	0.4%*	0.4%
Some Other Race alone	147	0.1%	151	0.1%	0.1%
Two or More Races	2,603	2.4%	4,326	3.6%*	3.7%

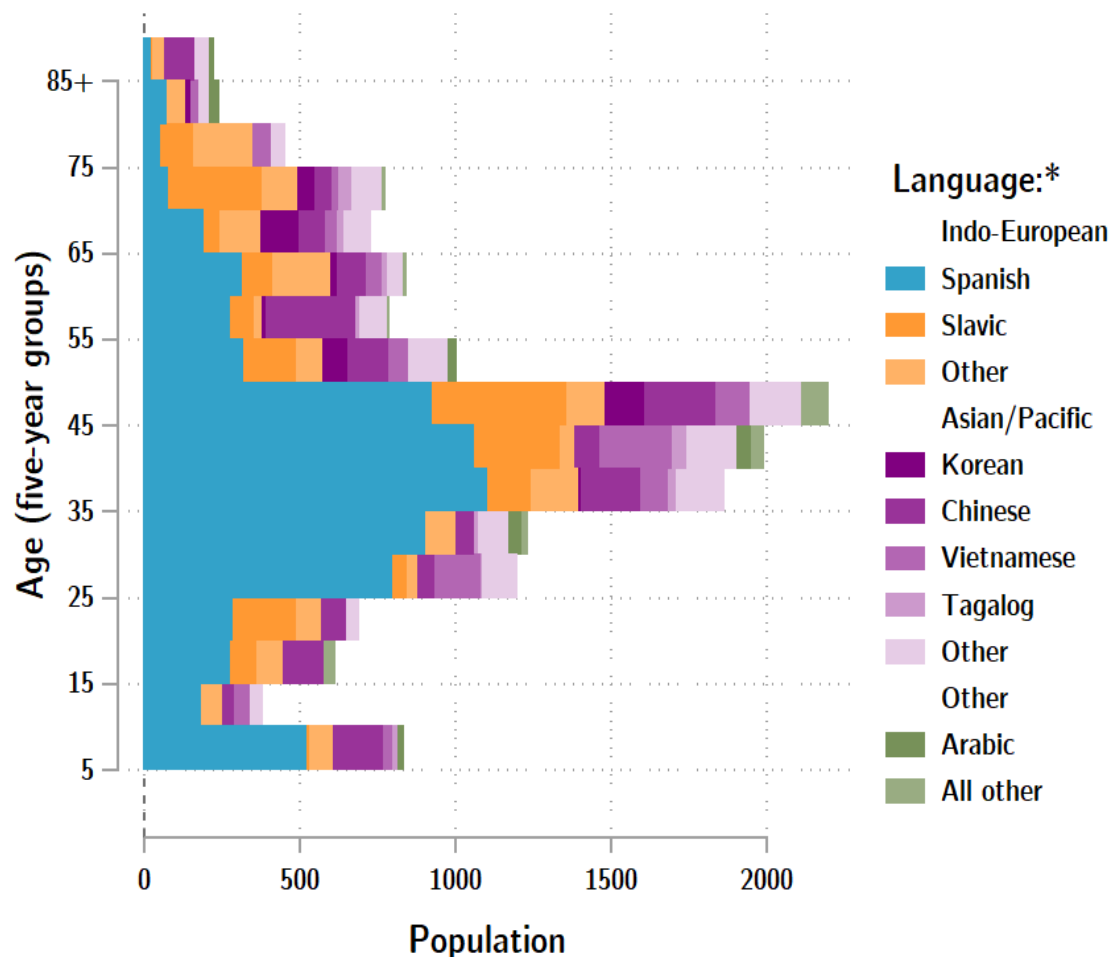
RACE ALONE OR IN COMBINATION WITH ONE OR MORE OTHER RACES**	2010 Census	2010 Census Percent	2015-19 ACS Estimate	2015-19 ACS Percent	Oregon 2015-19 ACS Percent
White	99,297	91.0%	107,122	89.9%*	88.8%
Black or African American	1,234	1.1%	2,198	1.8%*	2.9%
American Indian and Alaska Native	1,455	1.3%	1,821	1.5%	3.1%
Asian	5,910	5.4%	8,896	7.5%*	6.0%
Native Hawaiian and Other Pacific Islander	516	0.5%	829	0.7%*	0.8%
Some Other Race	4,271	3.9%	3,574	3.0%*	3.6%

Source: U.S. Census Bureau, 2010 Census and 2019 5-year American Community Survey estimates. PUMAs are Public Use Microdata Areas, groups of census tracts with a population of 100,000 or greater.

* Difference between 2010 Census and 2015-19 ACS is statistically significant at the 90% confidence level.

** Total may add to more than 100% due to persons identifying as more than one race.

Clackamas County population by age & language: 2019



Language Spoken at Home Speak English less than "very well" Clackamas County

Languages	Estimate
Total Population Age 5 and Older	388,445
Speaking English less than "very well"	15,557
Spanish	7,468
Russian, Polish, or other Slavic languages	1,571
Other Indo-European languages	1,358
Korean	574
Chinese (incl. Cantonese and Mandarin)	1,725
Vietnamese	831
Tagalog (incl. Filipino)	169
Other Asian and Pacific Island languages	1,520
Arabic	215
Other languages	126

Source: U.S. Census Bureau American Community Survey 2019 5-year estimates, Table C16001.

Note: * Languages for persons who speak English less than very well.

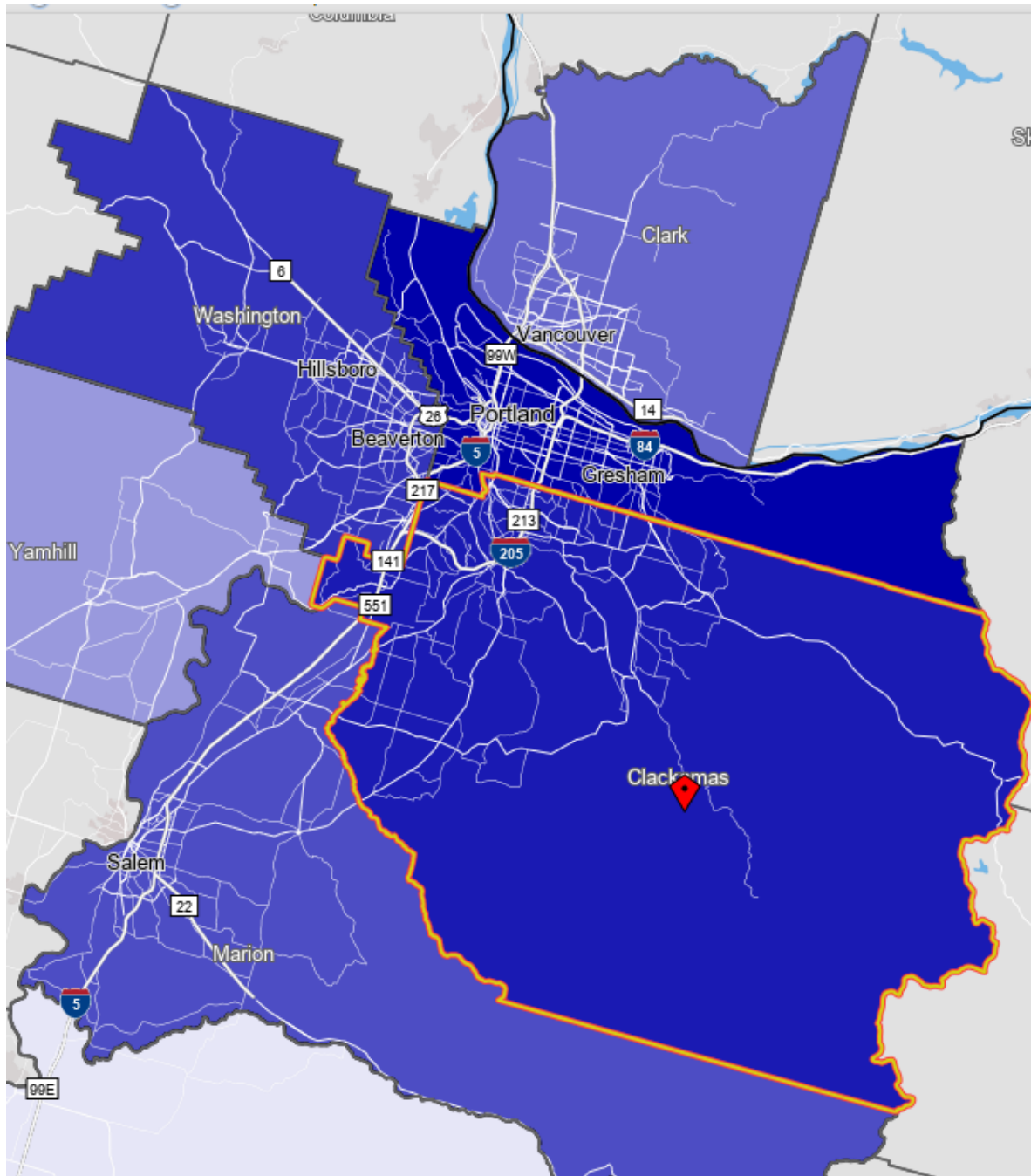
Source: ACS tables B16004, C16001, PUMS; PEP estimates; Analysis by PRC, PSU

[Link to Table C16001](#) for all counties, including margins of error.

[Visualization](#) of language data by census tract within county.

Clackamas County Commute Flows

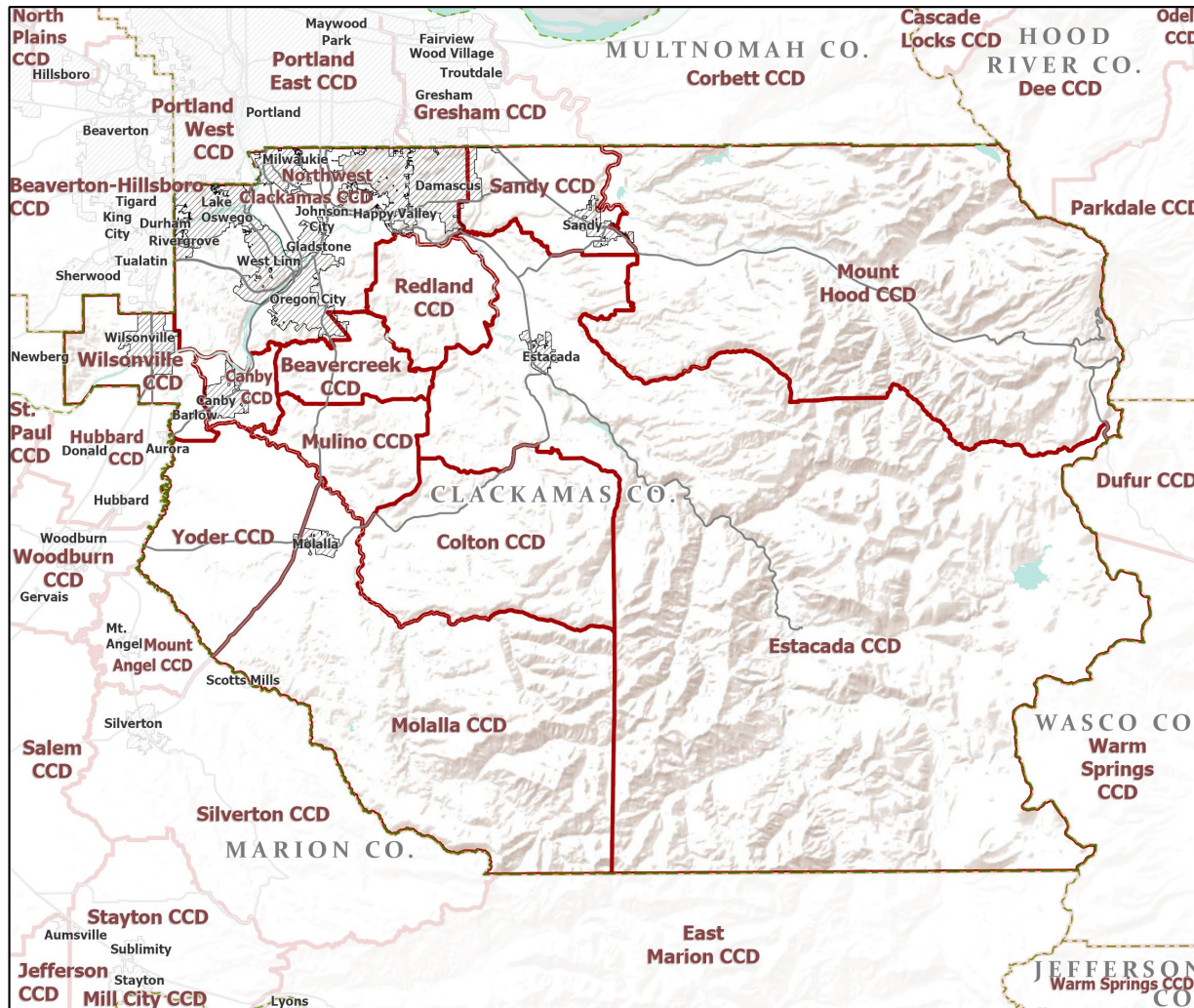
Explore sub-county commute flows in [this interactive map](#).



Jobs Counts by Counties Where Workers are Employed - All Jobs

	2018	
	Count	Share
All Counties	194,622	100.0%
Multnomah County, OR	70,454	36.2%
Clackamas County, OR	67,582	34.7%
Washington County, OR	32,527	16.7%
Marion County, OR	8,116	4.2%
Clark County, WA	2,767	1.4%
Lane County, OR	1,747	0.9%
Yamhill County, OR	1,553	0.8%
King County, WA	870	0.4%
Deschutes County, OR	866	0.4%
Linn County, OR	748	0.4%
All Other Locations	7,392	3.8%

County Subdivisions (CCDs): Clackamas County



- Counties
- Incorporated Cities
- Highways
- County Subdivisions (CCDs)



Portland State University,
Population Research Center,
May 2021.
www.pdx.edu/prc

Sources: Esri, USGS, NOAA
State of Oregon GEO;
Oregon Dept. of
Transportation.

0 40 Miles

Clackamas County Employment by Sector by Census County Division (1 of 2)

Sector	Oregon	County Total	Beavercreek CCD	Canby CCD	Colton CCD	Estacada CCD
Total, All Jobs*	1,904,601	169,085	1,083	7,263	529	3,007
Goods-Producing	18.6%	22.3%	44.6%	37.2%	36.5%	44.0%
Natural Resources and Mining	2.7%	2.5%	3.6%	3.0%	10.6%	13.0%
Construction	5.9%	8.8%	39.5%	14.4%	22.1%	19.6%
Manufacturing	10.0%	11.1%	1.5%	19.8%	3.8%	11.3%
Service Providing	81.4%	77.7%	55.4%	62.8%	63.5%	56.0%
Trade, Transportation, and Utilities	18.6%	21.4%	9.2%	24.1%	6.4%	19.4%
Information	2.0%	1.4%	0.3%	2.7%	1.9%	0.4%
Financial Activities	4.6%	4.9%	1.9%	2.5%	1.9%	1.5%
Professional and Business Services	13.4%	12.5%	10.6%	3.8%	6.4%	7.1%
Education and Health Services	23.1%	20.4%	16.1%	15.0%	24.2%	13.1%
Leisure and Hospitality	11.4%	9.8%	6.3%	9.4%	3.8%	8.3%
Other Services	4.2%	4.5%	11.0%	4.2%	15.9%	4.3%
Public Administration	4.2%	2.8%	0.0%	1.0%	3.0%	1.7%

Continued on next slide

Source: U.S. Census Bureau, LEHD Origin-Destination Employment Statistics, 2018 Q2

* Jobs covered by unemployment insurance and federal workers.

Clackamas County Employment by Sector by Census County Division (2 of 2)

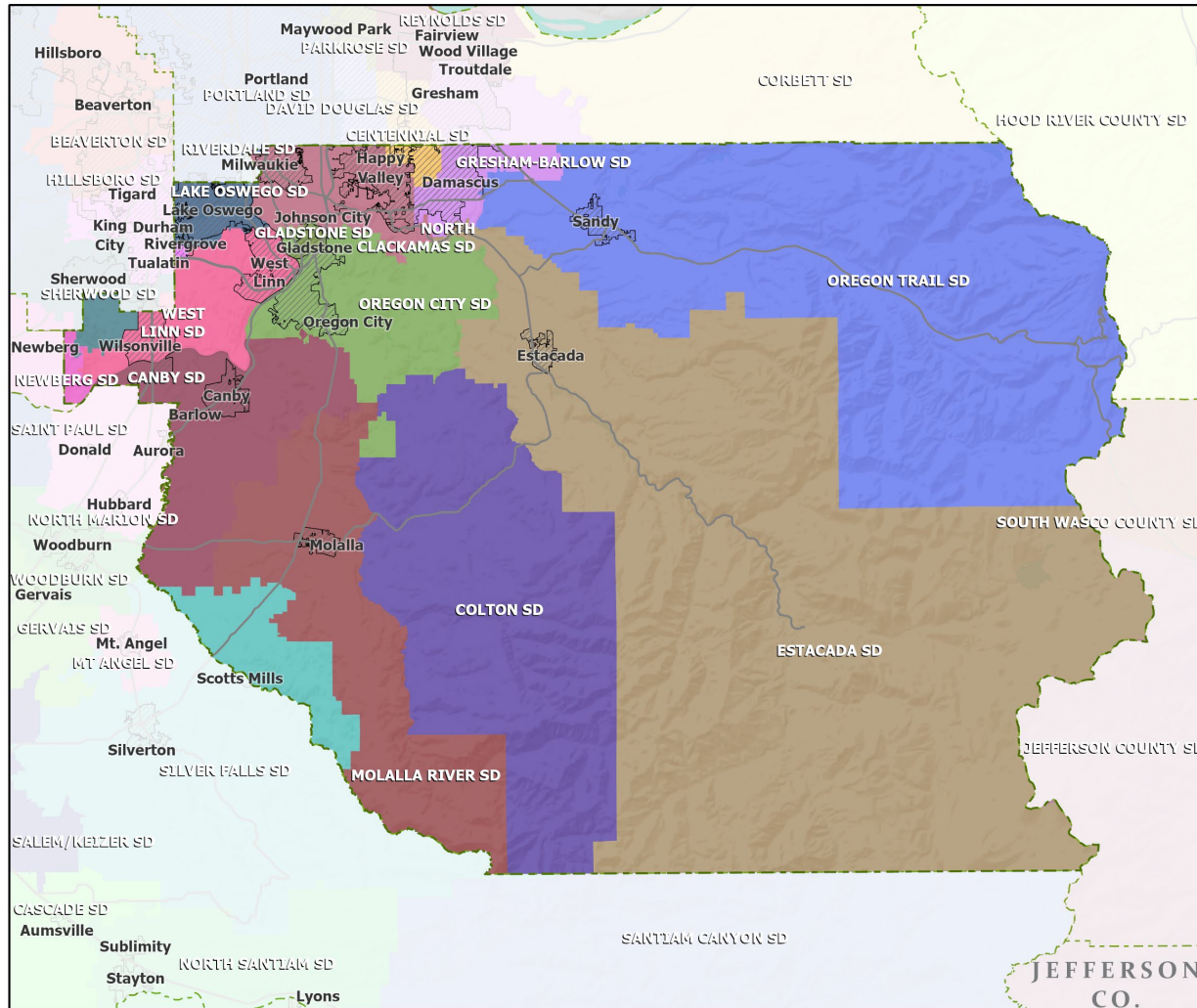
Continued from previous slide

Sector	Oregon	County Total	Mulino CCD	Northwest Clackamas CCD	Redland CCD	Sandy CCD
Total, All Jobs*	1,904,601	169,085	671	125,243	782	6,832
Goods-Producing	18.6%	22.3%	51.9%	17.4%	42.8%	31.5%
Natural Resources and Mining	2.7%	2.5%	2.8%	0.4%	4.2%	12.7%
Construction	5.9%	8.8%	24.9%	7.6%	37.5%	11.0%
Manufacturing	10.0%	11.1%	24.1%	9.4%	1.2%	7.8%
Service Providing	81.4%	77.7%	48.1%	82.6%	57.2%	68.5%
Trade, Transportation, and Utilities	18.6%	21.4%	11.6%	21.2%	12.7%	21.5%
Information	2.0%	1.4%	1.5%	1.4%	2.9%	2.7%
Financial Activities	4.6%	4.9%	0.9%	5.9%	0.9%	2.0%
Professional and Business Services	13.4%	12.5%	16.2%	13.7%	13.0%	4.9%
Education and Health Services	23.1%	20.4%	8.2%	23.3%	13.0%	15.1%
Leisure and Hospitality	11.4%	9.8%	6.0%	9.5%	7.2%	10.7%
Other Services	4.2%	4.5%	3.7%	4.3%	7.4%	9.4%
Public Administration	4.2%	2.8%	0.0%	3.4%	0.0%	2.0%

Source: U.S. Census Bureau, LEHD Origin-Destination Employment Statistics, 2018 Q2

* Jobs covered by unemployment insurance and federal workers.

School Districts: Clackamas County



- Counties
- Incorporated Cities
- Highways

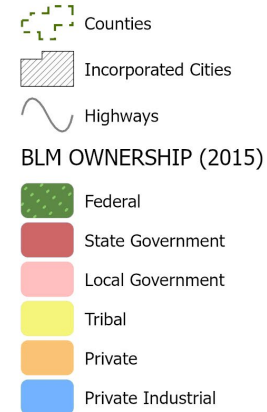
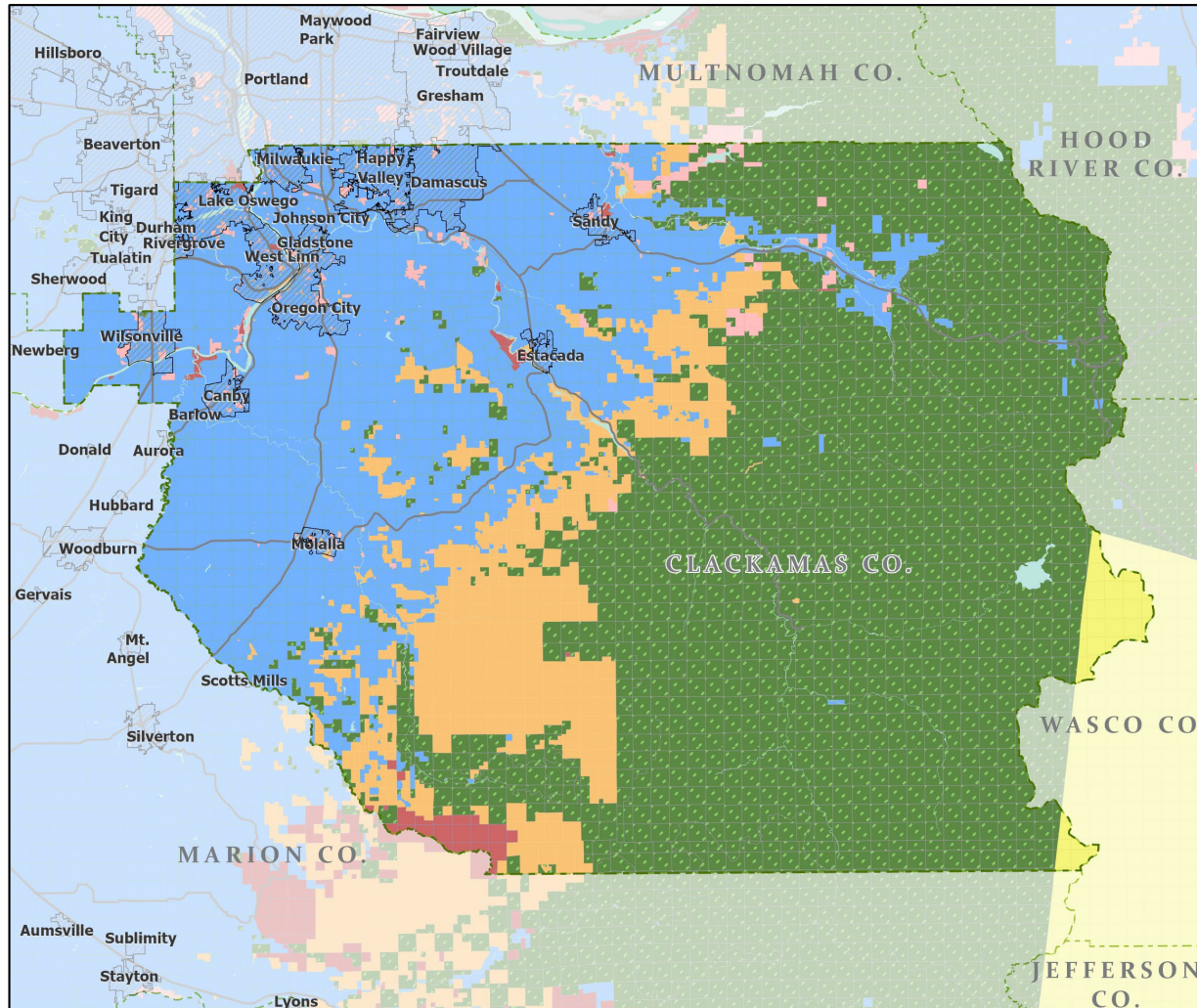


Portland State University,
Population Research Center,
May 2021.
www.pdx.edu/prc

Sources: Esri, USGS, NOAA
State of Oregon GEO;
Oregon Dept. of
Transportation.

0 40 Miles

Land Ownership: Clackamas County

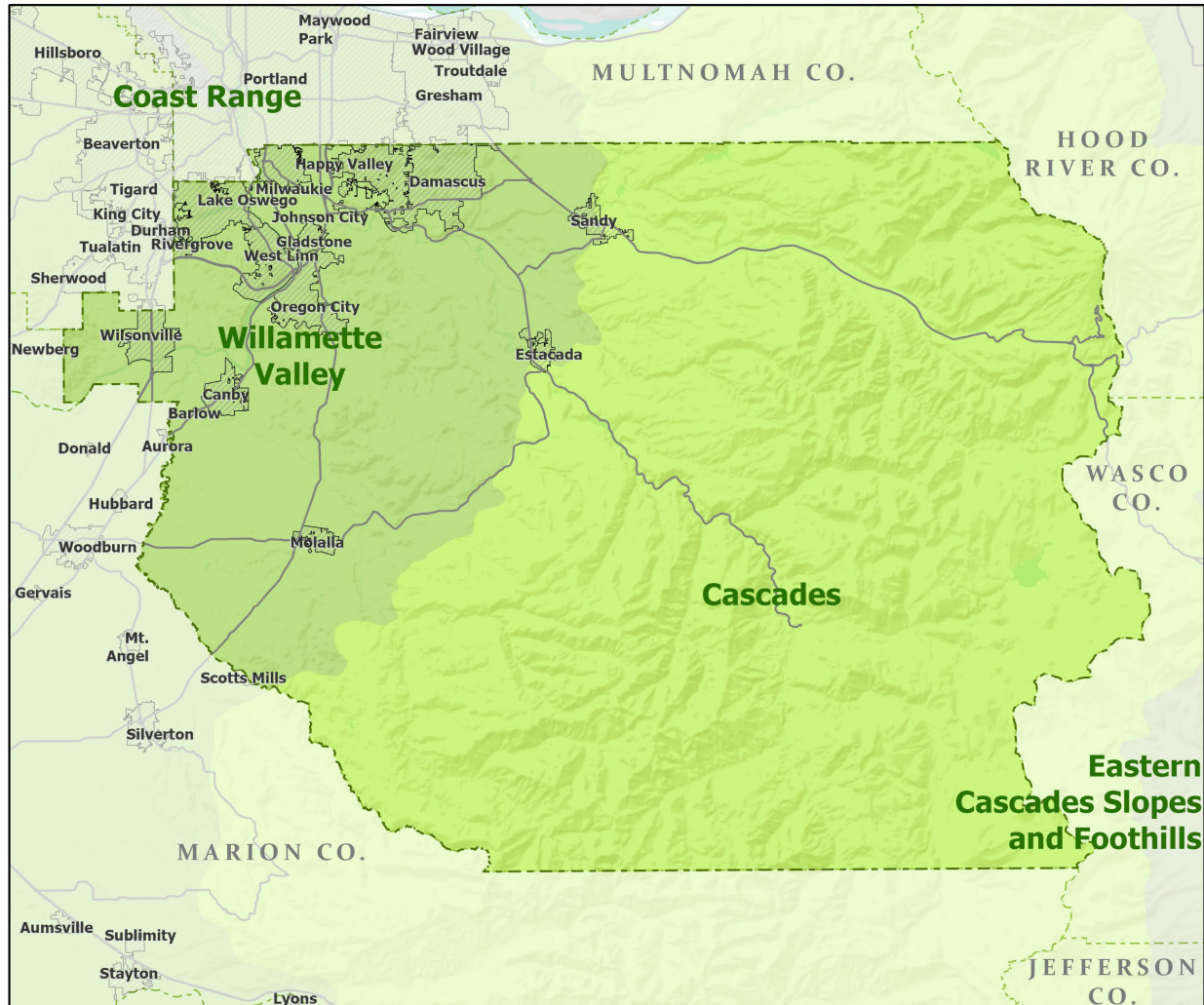


Portland State University,
Population Research Center,
May 2021.
www.pdx.edu/prc

Sources: Esri, USGS, NOAA

State of Oregon GEO;
Oregon Dept. of
Transportation; Bureau of
Land management.

Ecoregions: Clackamas County



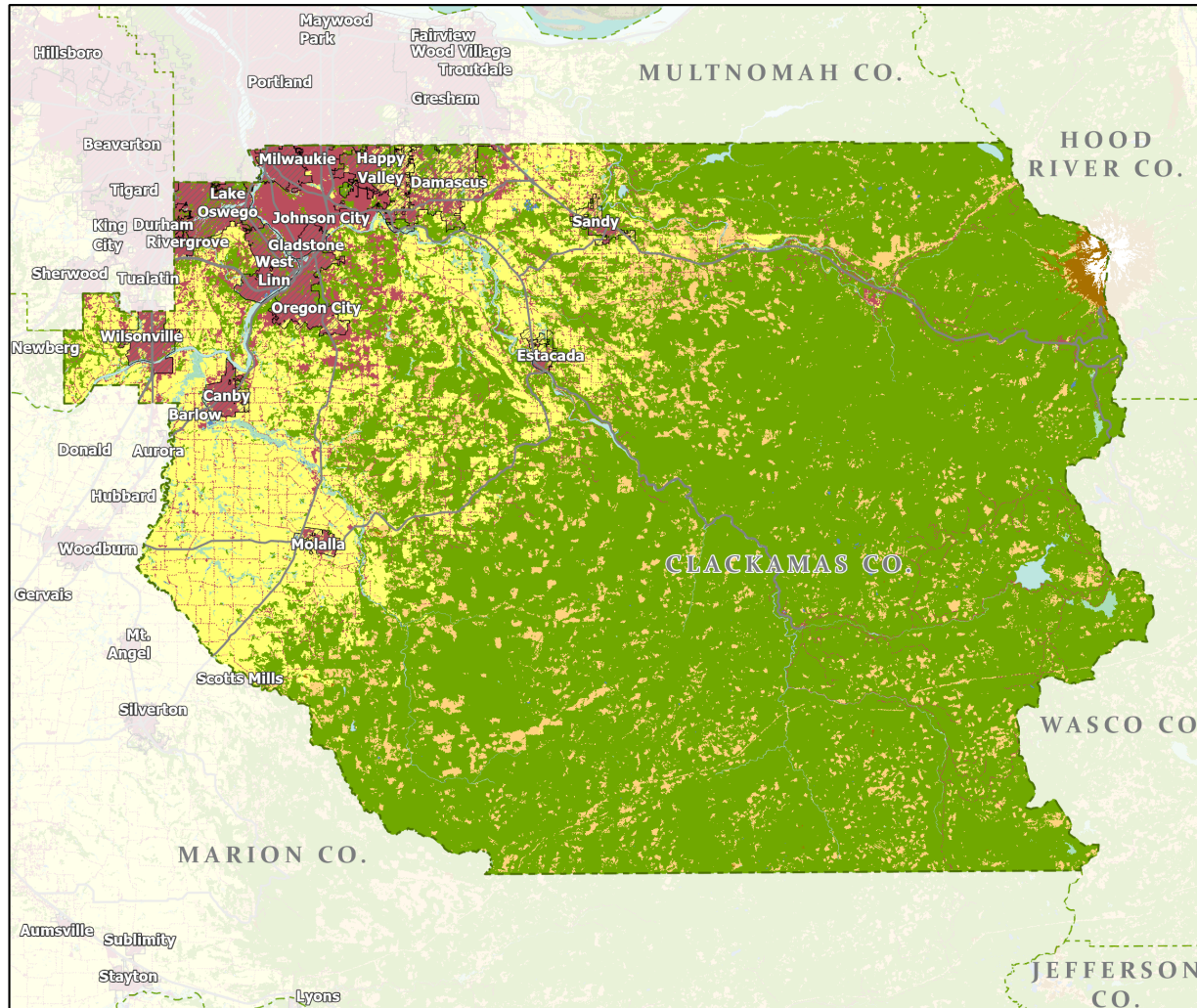
- Counties
- Incorporated Cities
- Highways
- LEVEL III ECOREGIONS OF OREGON (2006)
 - Cascades
 - Coast Range
 - Eastern Cascades Slopes and Foothills
 - Willamette Valley



Portland State University,
Population Research Center,
May 2021.
www.pdx.edu/prc

Sources: Esri, USGS, NOAA
State of Oregon GEO;
Oregon Dept. of
Transportation.

Land Cover: Clackamas County



- Counties
- Incorporated Cities
- Highways

NATIONAL LAND COVER

- Developed
- Cultivated Crops/Pasture/Hay
- Barren Land
- Forest
- Grasslands/Scrub/Sedge
- Lichens/Moss
- Wetlands
- Perennial Snow/Ice
- Open Water



Portland State University,
Population Research Center,
May 2021.
www.pdx.edu/prc

Sources: Esri, USGS, NOAA
State of Oregon GEO;
Oregon Dept. of
Transportation.