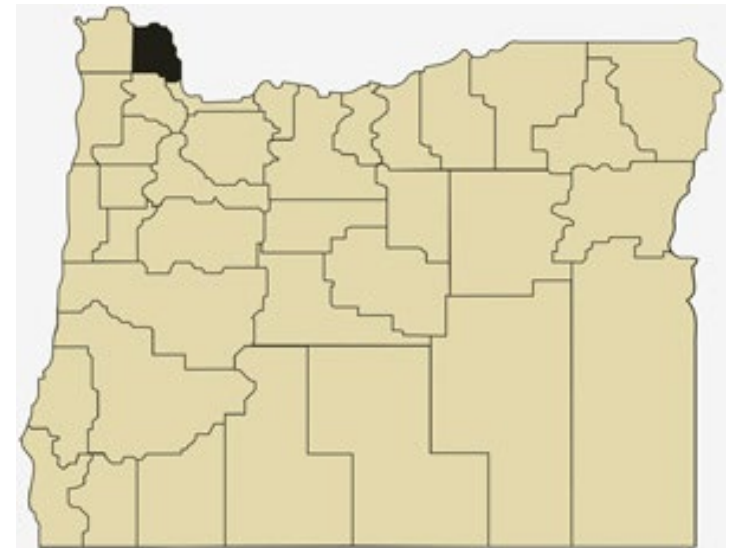


Columbia County Overview

House and Senate Committees on Redistricting

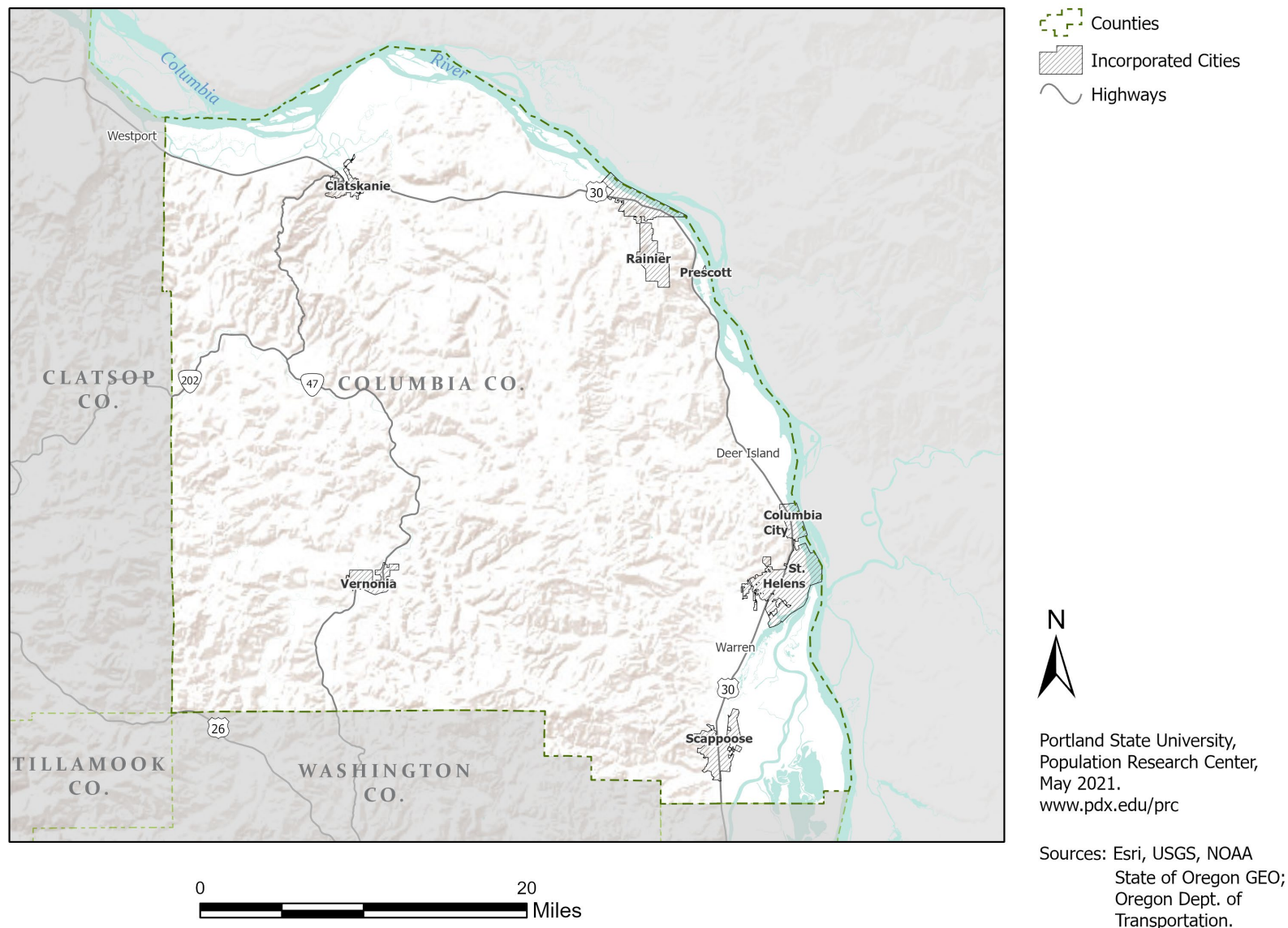
June 15, 2021

July 1, 2020 population estimate	53,280
Population rank	17th
Share of state population	1.2%
Density (per square mile)	77.6
Density rank	10th
Area (square miles)	687
Area rank	33rd
Share of state area	0.7%

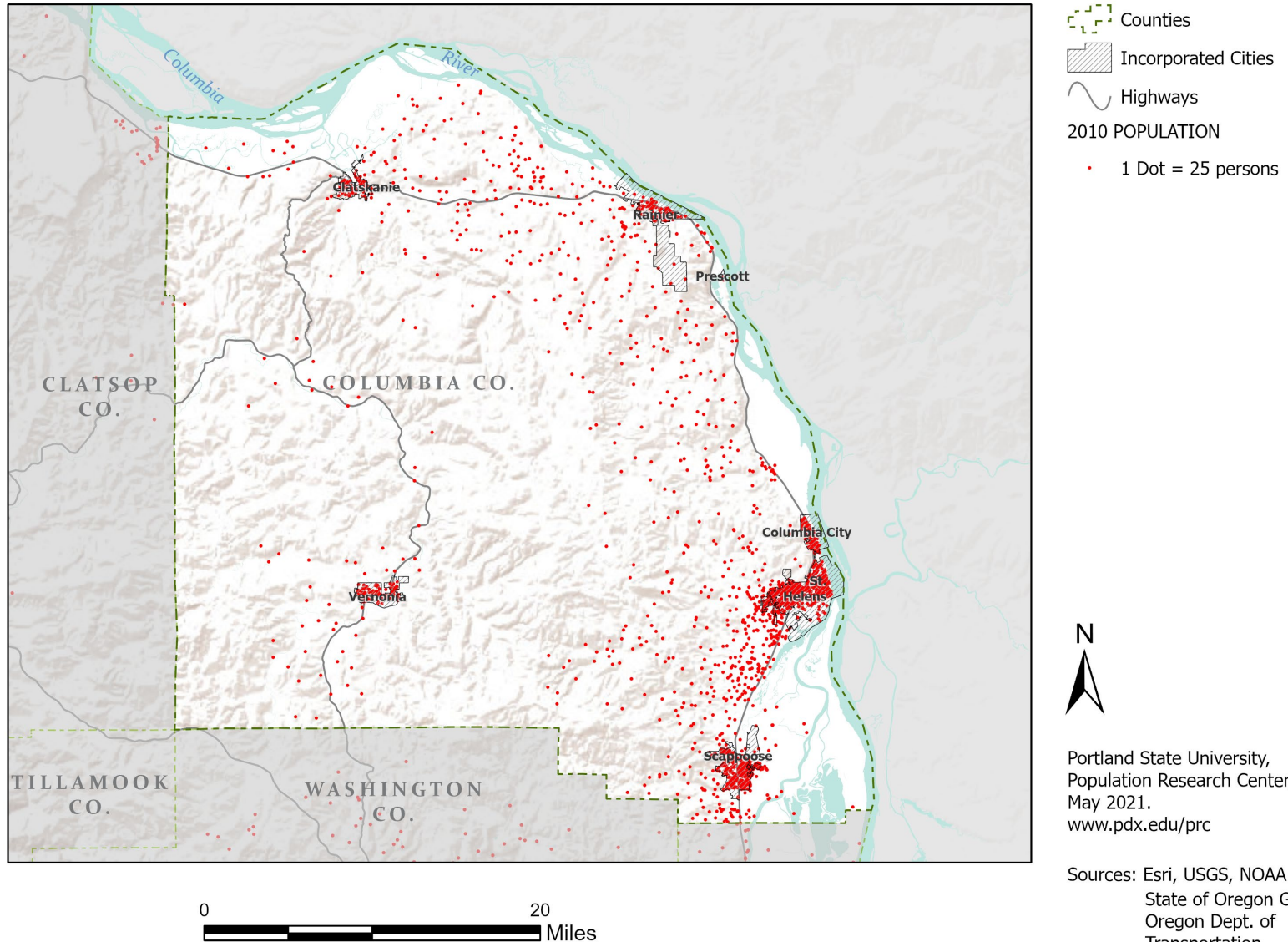


Sources: PSU Population Research Center; Oregon Blue Book.

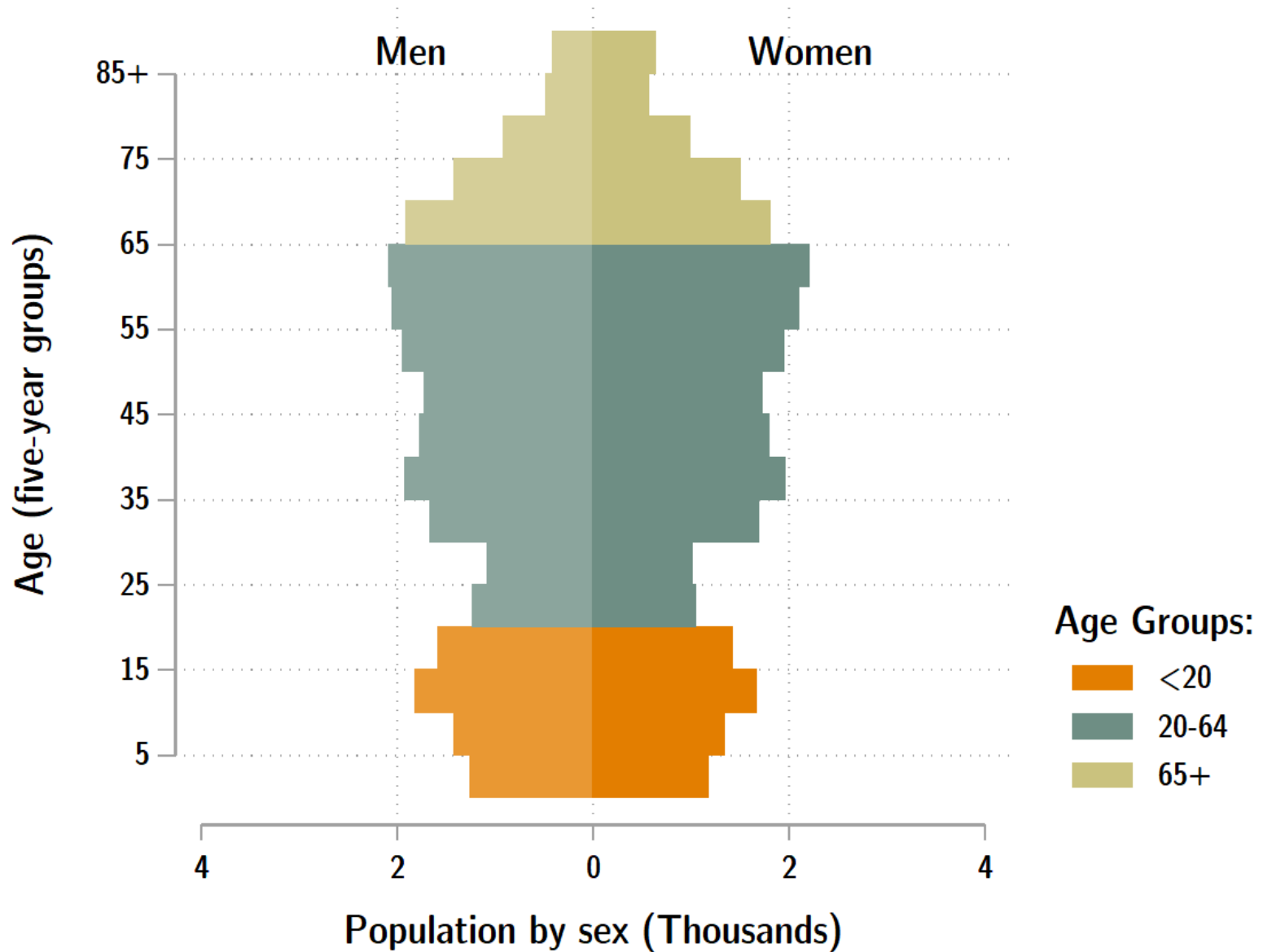
Highways: Columbia County



Population: Columbia County



Columbia population by age & sex: 2020



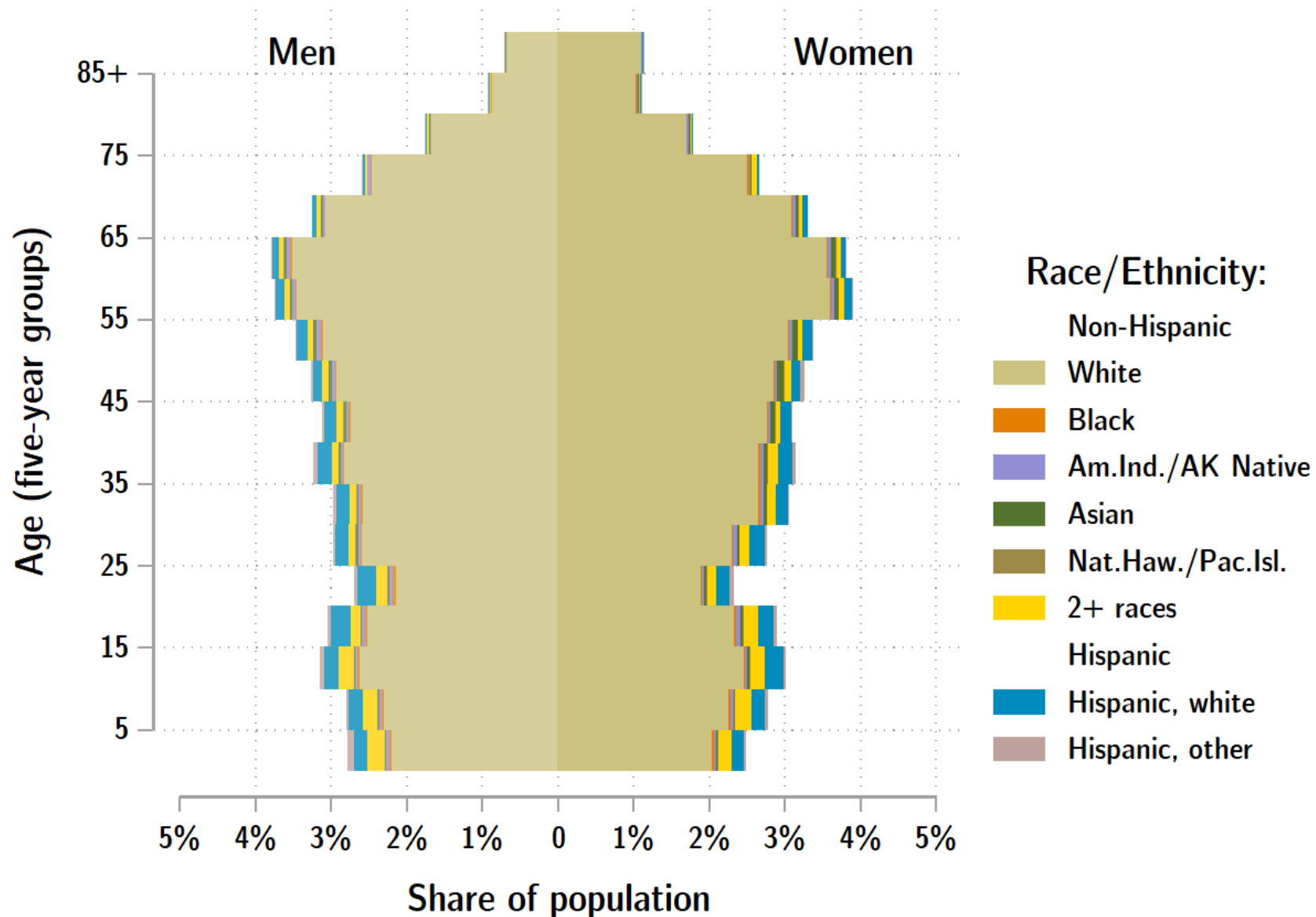
Source: Estimates by Population Research Center, PSU

Age Distribution, Columbia County

Age Group	2020 Estimate	2020 Percent of Total	Oregon 2020 Percent of Total
Total population	53,280	100.0%	100.0%
Under age 5	2,433	4.6%	5.4%
Age 5 to 17	8,113	15.2%	14.9%
Age 18 to 64	32,089	60.2%	61.1%
Age 65 and over	10,646	20.0%	18.6%

Source: PSU Population Research Center July 1, 2020 Population Estimates

Columbia County population by age & sex: 2019



Source: Estimates by US Census Bureau

Race and Ethnicity, Columbia County

	2010 Census	2010 Census Percent	2015-19 ACS Estimate	2015-19 ACS Percent	Oregon 2015-19 ACS Percent
HISPANIC OR LATINO AND RACE					
Total population	49,351	100.0%	51,375	100.0%	100.0%
Hispanic or Latino	1,987	4.0%	2,652	5.2%*	13.0%
Not Hispanic or Latino	47,364	96.0%	48,723	94.8%*	87.0%
White alone	44,563	90.3%	45,478	88.5%*	75.7%
Black or African American alone	195	0.4%	231	0.4%	1.8%
American Indian and Alaska Native alone	590	1.2%	478	0.9%	0.9%
Asian alone	446	0.9%	506	1.0%	4.3%
Native Hawaiian and Other Pacific Islander alone	95	0.2%	88	0.2%	0.4%
Some Other Race alone	43	0.1%	9	0.0%	0.1%
Two or More Races	1,432	2.9%	1,933	3.8%*	3.7%

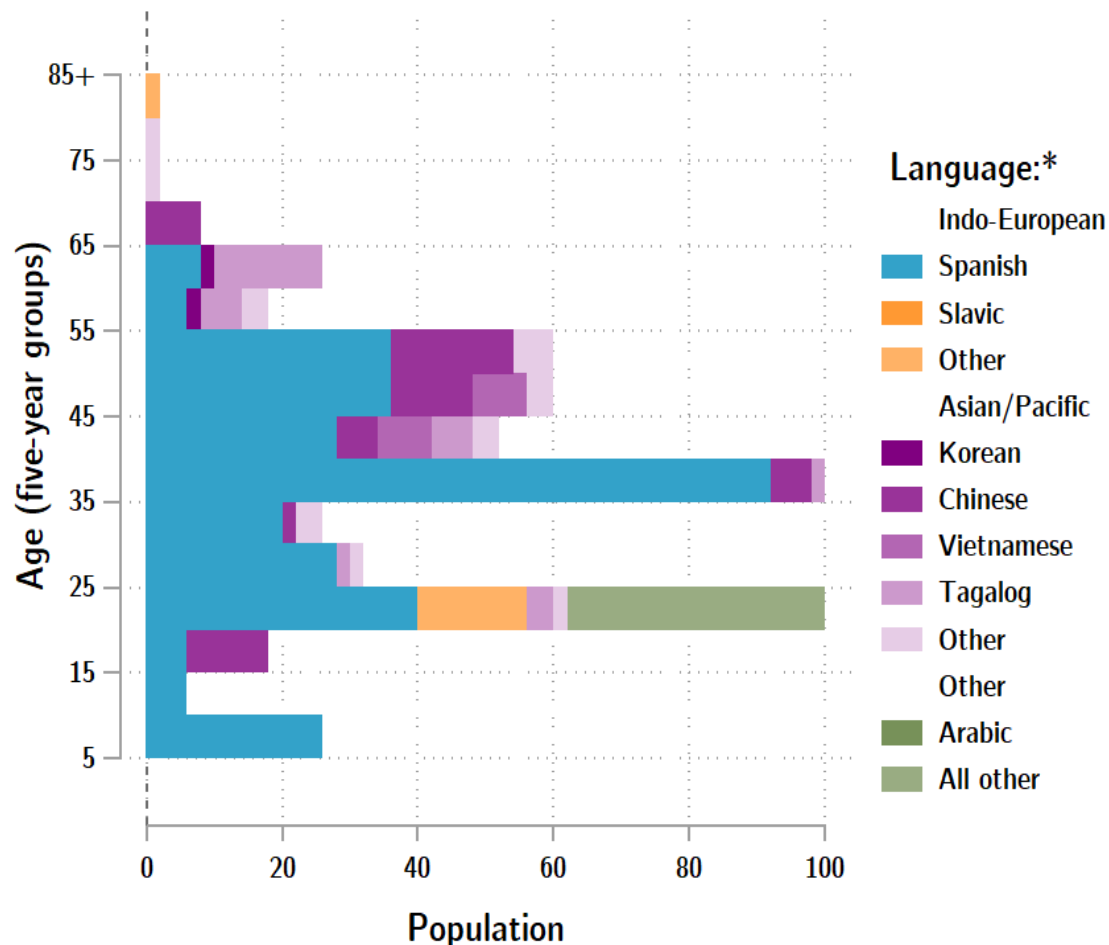
	2010 Census	2010 Census Percent	2015-19 ACS Estimate	2015-19 ACS Percent	Oregon 2015-19 ACS Percent
RACE ALONE OR IN COMBINATION WITH ONE OR MORE OTHER RACES**					
White	47,268	95.8%	49,704	96.7%*	88.8%
Black or African American	450	0.9%	532	1.0%*	2.9%
American Indian and Alaska Native	1,583	3.2%	1,610	3.1%	3.1%
Asian	891	1.8%	1,049	2.0%*	6.0%
Native Hawaiian and Other Pacific Islander	221	0.4%	242	0.5%	0.8%
Some Other Race	787	1.6%	440	0.9%*	3.6%

Source: U.S. Census Bureau, 2010 Census and 2019 5-year American Community Survey estimates.

* Difference between 2010 Census and 2015-19 ACS is statistically significant at the 90% confidence level.

** Total may add to more than 100% due to persons identifying as more than one race.

Columbia County population by age & language: 2019



Language Spoken at Home Speak English less than "very well" Columbia County

Languages	Estimate
Total Population Age 5 and Older	48,675
Speaking English less than "very well"	565
Spanish	333
Russian, Polish, or other Slavic languages	0
Other Indo-European languages	19
Korean	6
Chinese (incl. Cantonese and Mandarin)	63
Vietnamese	18
Tagalog (incl. Filipino)	38
Other Asian and Pacific Island languages	31
Arabic	0
Other languages	57

Source: U.S. Census Bureau American Community Survey 2019 5-year estimates, Table C16001.

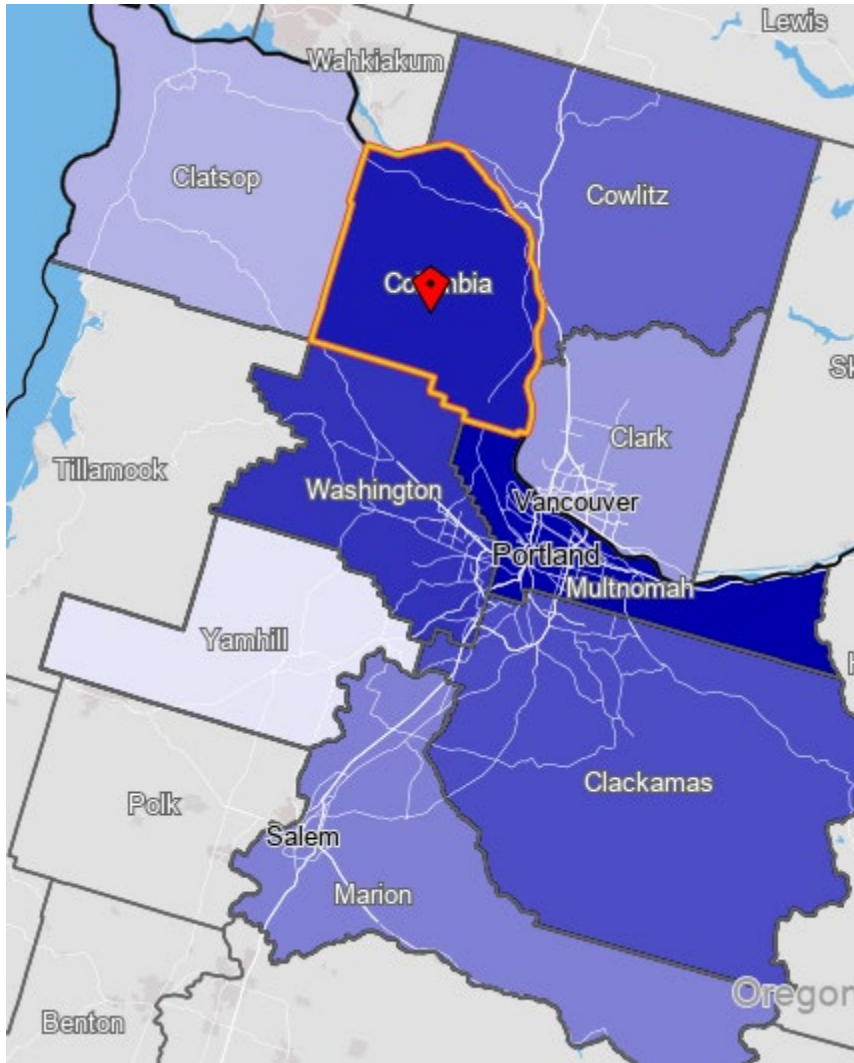
Note: * Languages for persons who speak English less than very well.

Source: ACS tables B16004, C16001, PUMS; PEP estimates; Analysis by PRC, PSU

[Link to Table C16001](#) for all counties, including margins of error.

[Visualization](#) of language data by census tract within county.

Columbia County Commute Flows

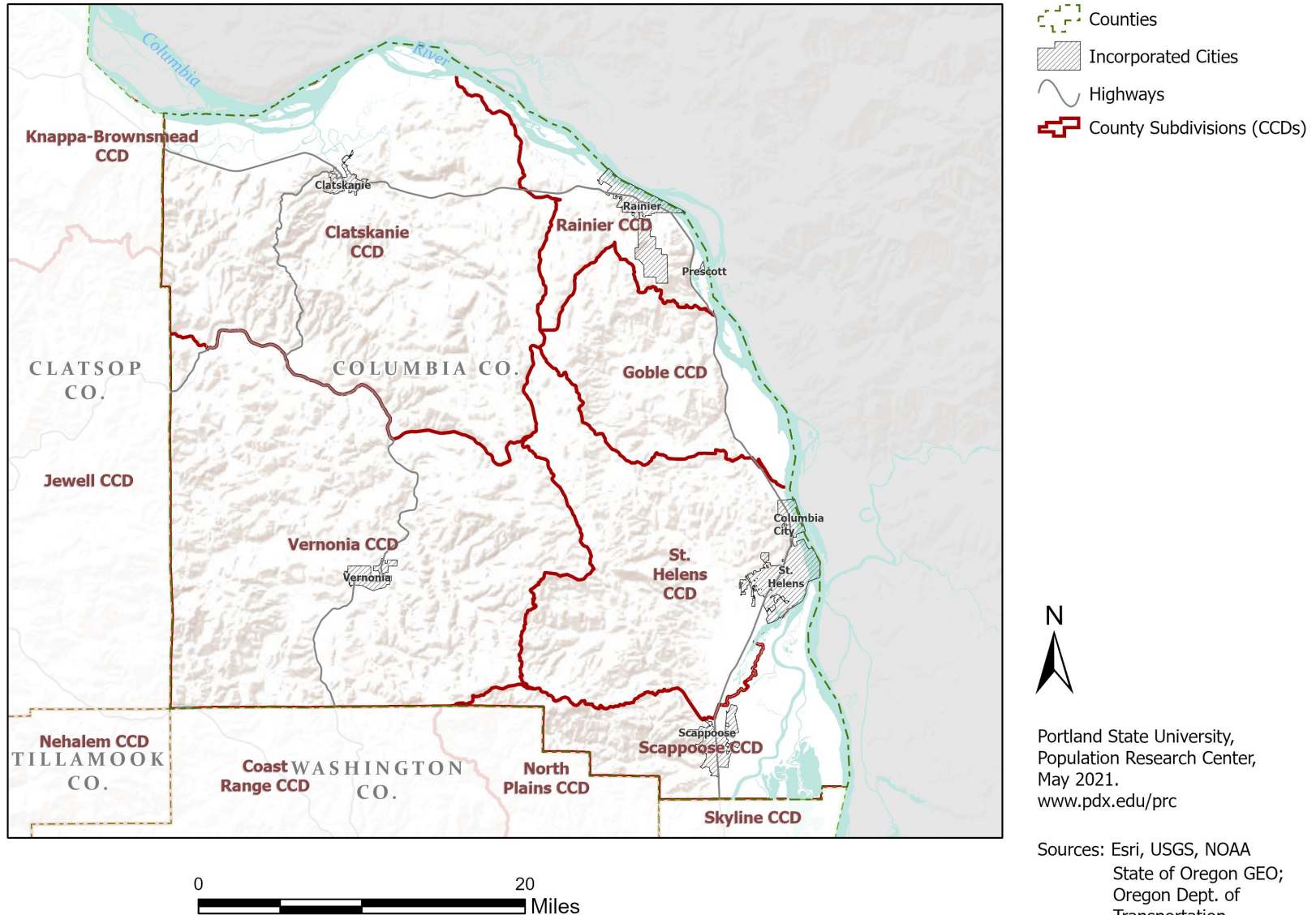


Explore sub-county commute flows in [this interactive map](#).

Jobs Counts by Counties Where Workers are Employed - All Jobs

	2018	
	Count	Share
All Counties	24,598	100.0%
Multnomah County, OR	6,977	28.4%
Columbia County, OR	6,611	26.9%
Washington County, OR	4,333	17.6%
Clackamas County, OR	1,258	5.1%
Cowlitz County, WA	986	4.0%
Marion County, OR	857	3.5%
Clark County, WA	676	2.7%
Clatsop County, OR	514	2.1%
Lane County, OR	312	1.3%
Yamhill County, OR	282	1.1%
All Other Locations	1,792	7.3%

County Subdivisions (CCDs): Columbia County



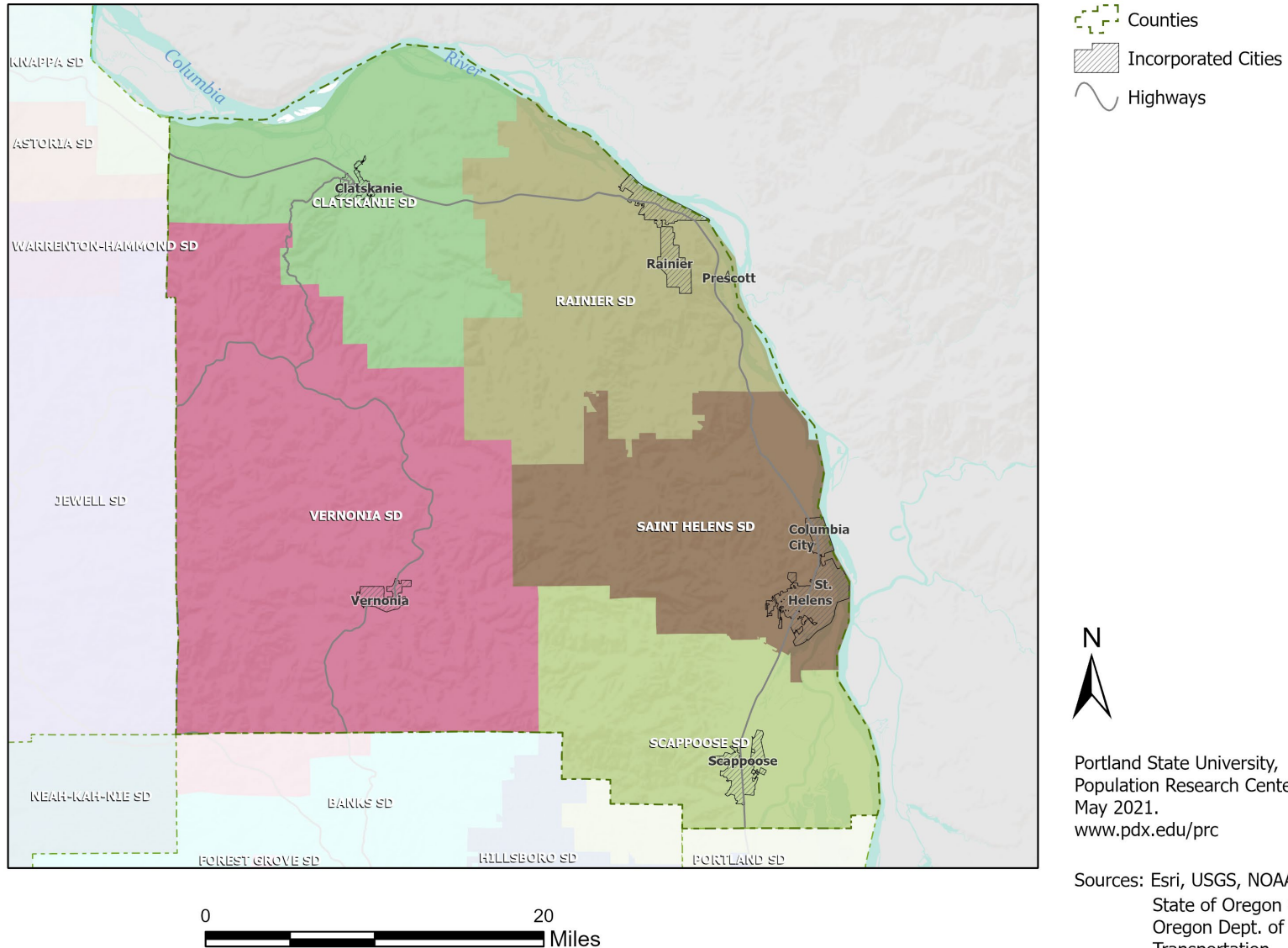
Columbia County Employment by Sector by Census County Division

Sector	Oregon	County Total	Clatskanie CCD	Goble CCD	Rainier CCD	St. Helens CCD	Scappoose CCD	Vernonia CCD
Total, All Jobs*	1,904,601	11,176	1,060	63	1,224	5,515	2,638	676
Goods-Producing	18.6%	25.8%	19.2%	14.3%	31.9%	19.6%	36.8%	33.7%
Natural Resources and Mining	2.7%	3.8%	7.3%	3.2%	0.2%	1.7%	7.4%	8.4%
Construction	5.9%	6.9%	4.8%	11.1%	3.7%	5.8%	10.0%	12.6%
Manufacturing	10.0%	15.1%	7.1%	0.0%	28.0%	12.1%	19.4%	12.7%
Service Providing	81.4%	74.2%	80.8%	85.7%	68.1%	80.4%	63.2%	66.3%
Trade, Transportation, and Utilities	18.6%	18.2%	21.6%	57.1%	22.3%	14.7%	20.6%	20.1%
Information	2.0%	0.5%	0.8%	0.0%	0.1%	0.3%	1.1%	0.3%
Financial Activities	4.6%	3.8%	6.6%	1.6%	2.4%	4.2%	3.1%	1.5%
Professional and Business Services	13.4%	6.7%	4.2%	4.8%	8.2%	8.0%	5.3%	3.3%
Education and Health Services	23.1%	22.2%	26.9%	4.8%	17.8%	26.3%	15.2%	18.8%
Leisure and Hospitality	11.4%	12.2%	13.8%	0.0%	11.0%	13.1%	10.7%	11.2%
Other Services	4.2%	6.1%	6.0%	17.5%	4.7%	6.6%	5.0%	7.7%
Public Administration	4.2%	4.6%	1.0%	0.0%	1.7%	7.2%	2.2%	3.4%

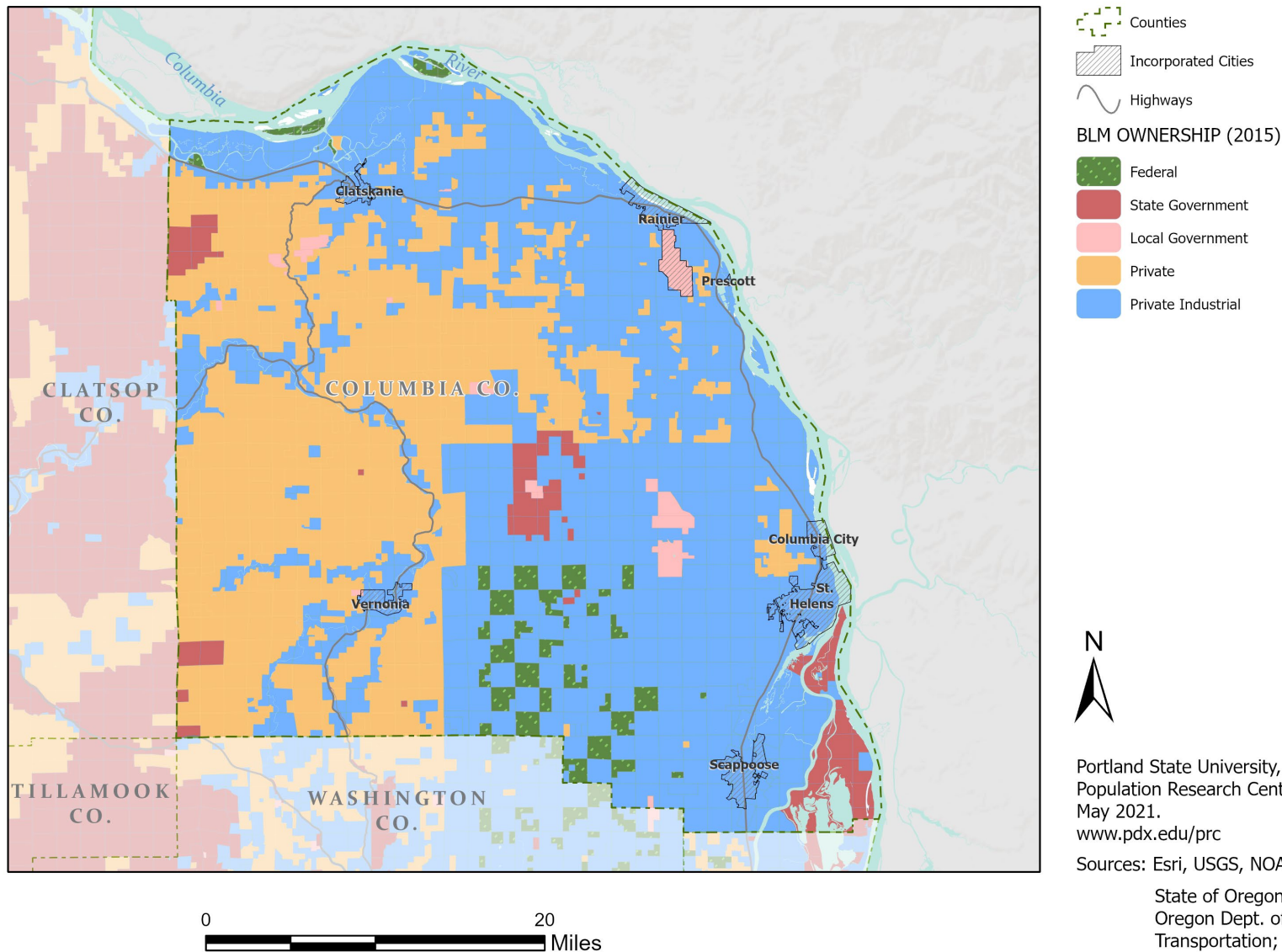
Source: U.S. Census Bureau, LEHD Origin-Destination Employment Statistics, 2018 Q2

* Jobs covered by unemployment insurance and federal workers.

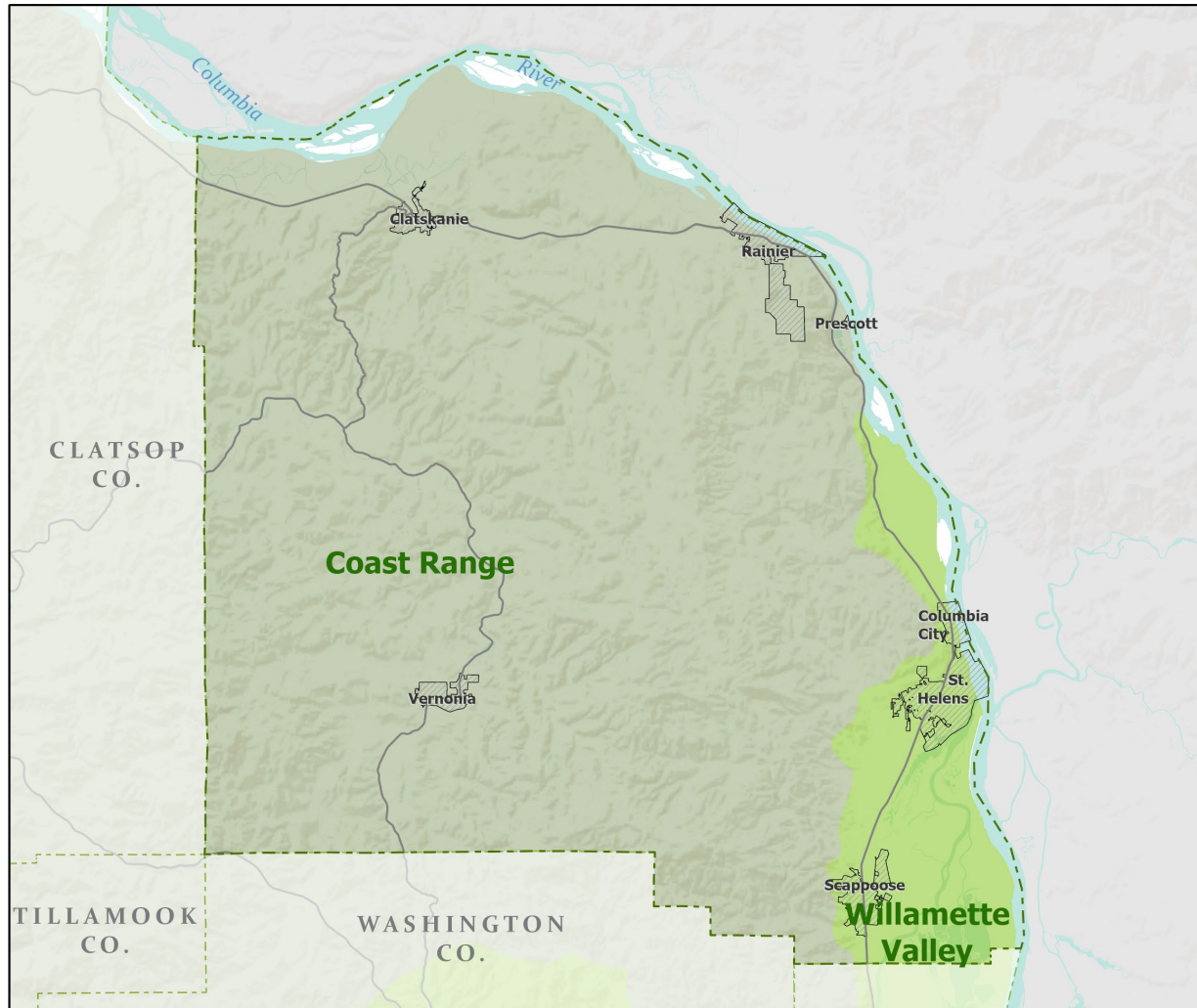
School Districts: Columbia County



Land Ownership: Columbia County



Ecoregions: Columbia County



- Counties
- Incorporated Cities
- Highways
- LEVEL III ECOREGIONS OF OREGON (2006)
- Coast Range
- Willamette Valley

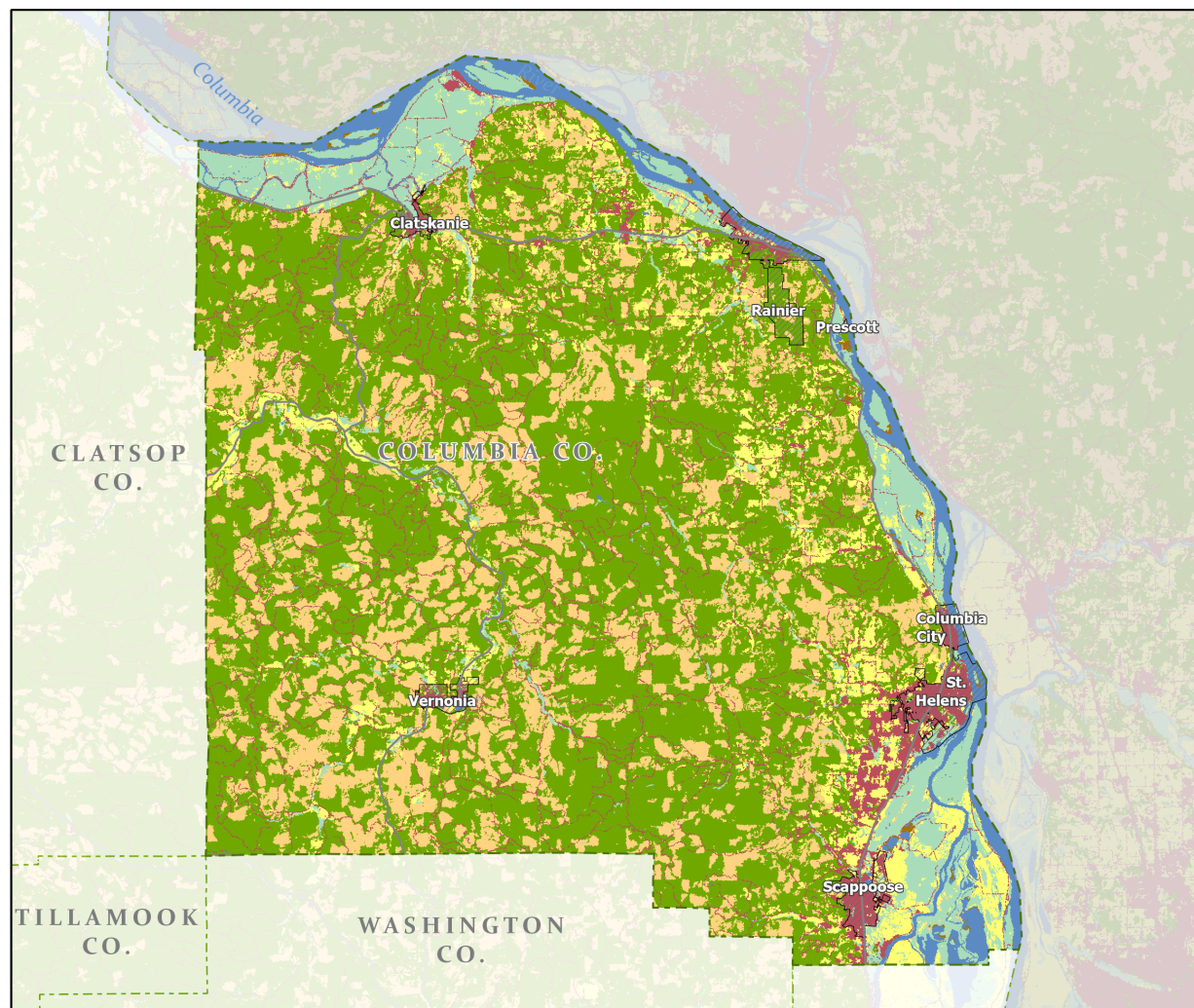


Portland State University,
Population Research Center,
May 2021.
www.pdx.edu/prc

Sources: Esri, USGS, NOAA
State of Oregon GEO;
Oregon Dept. of
Transportation.

0 20
Miles

Land Cover: Columbia County



Counties

Incorporated Cities

Highways

NATIONAL LAND COVER

Developed

Cultivated Crops/Pasture/Hay

Barren Land

Forest

Grasslands/Scrub/Sedge

Lichens/Moss

Wetlands

Perennial Snow/Ice

Open Water



Portland State University,
Population Research Center,
May 2021.
www.pdx.edu/prc

Sources: Esri, USGS, NOAA
State of Oregon GEO;
Oregon Dept. of
Transportation.

0 20
Miles