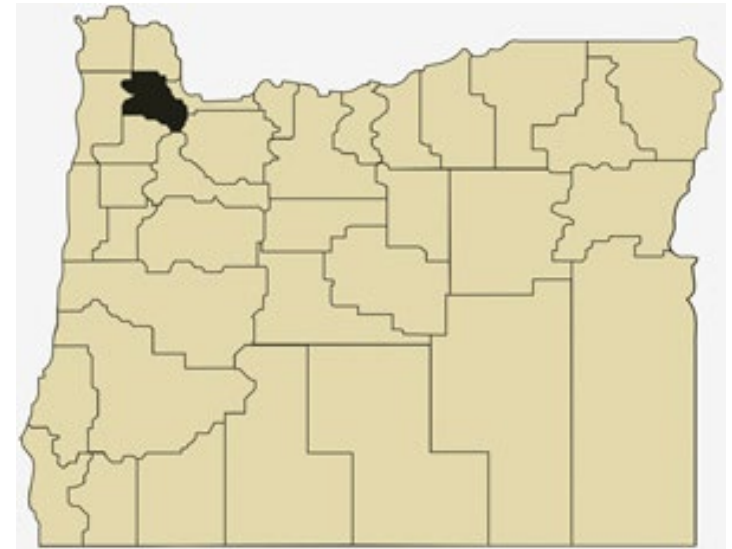


Washington County Overview

House and Senate Committees on Redistricting

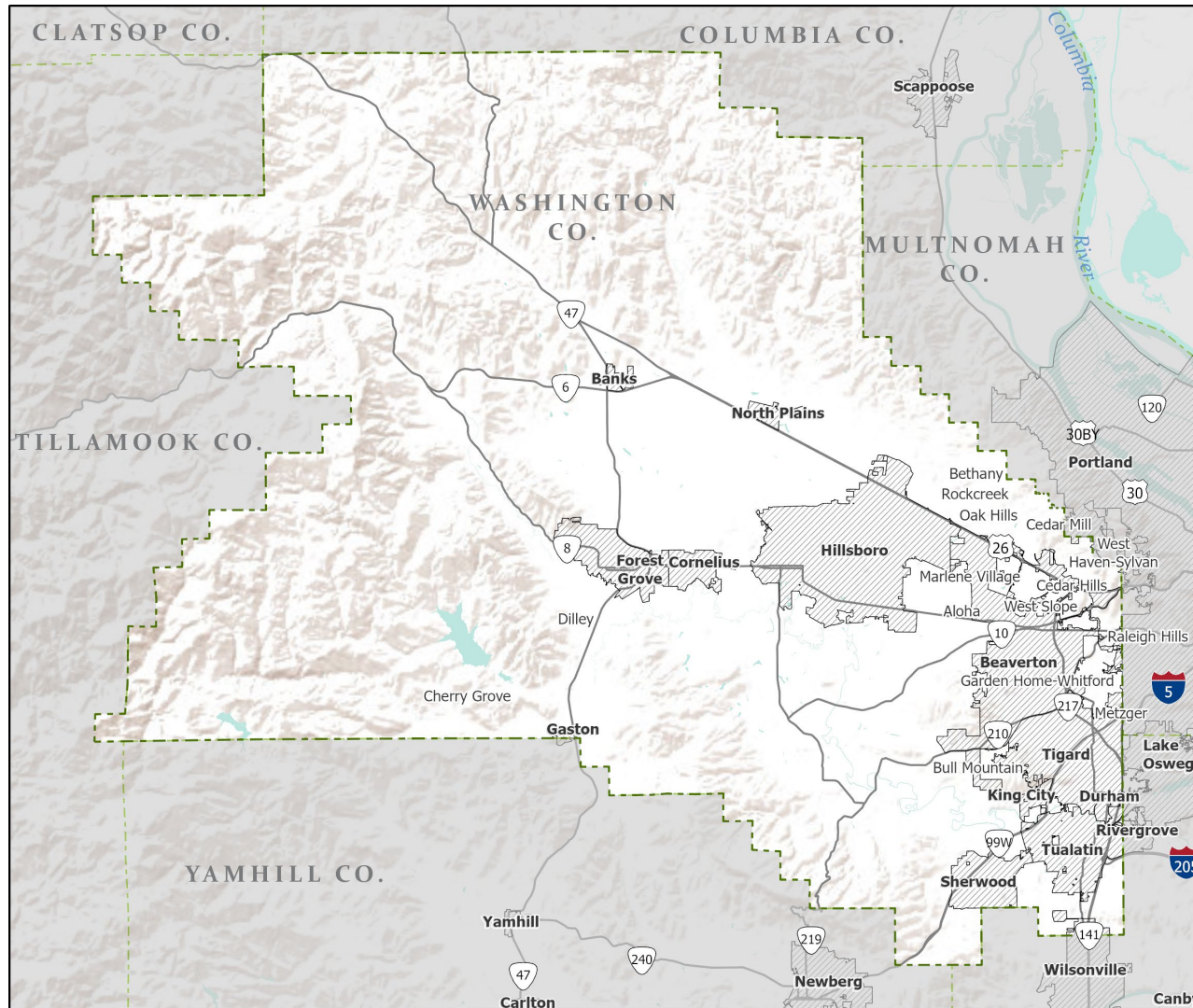
June 15, 2021

July 1, 2020 population estimate	620,080
Population rank	2nd
Share of state population	14.5%
Density (per square mile)	852.9
Density rank	2nd
Area (square miles)	727
Area rank	31st
Share of state area	0.7%



Sources: PSU Population Research Center; Oregon Blue Book.

Highways: Washington County



- Counties
- Incorporated Cities
- Highways

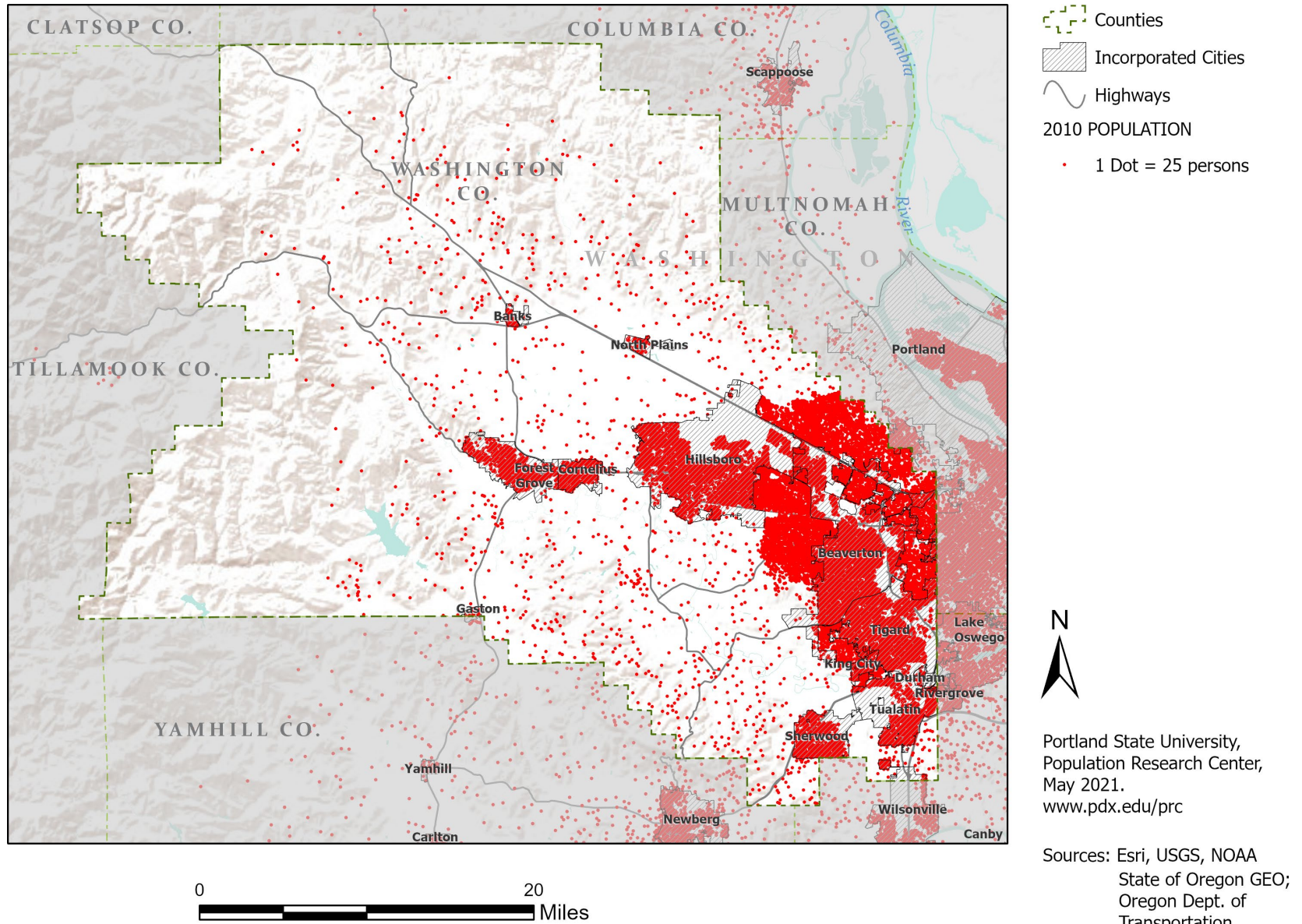


Portland State University,
Population Research Center,
May 2021.
www.pdx.edu/prc

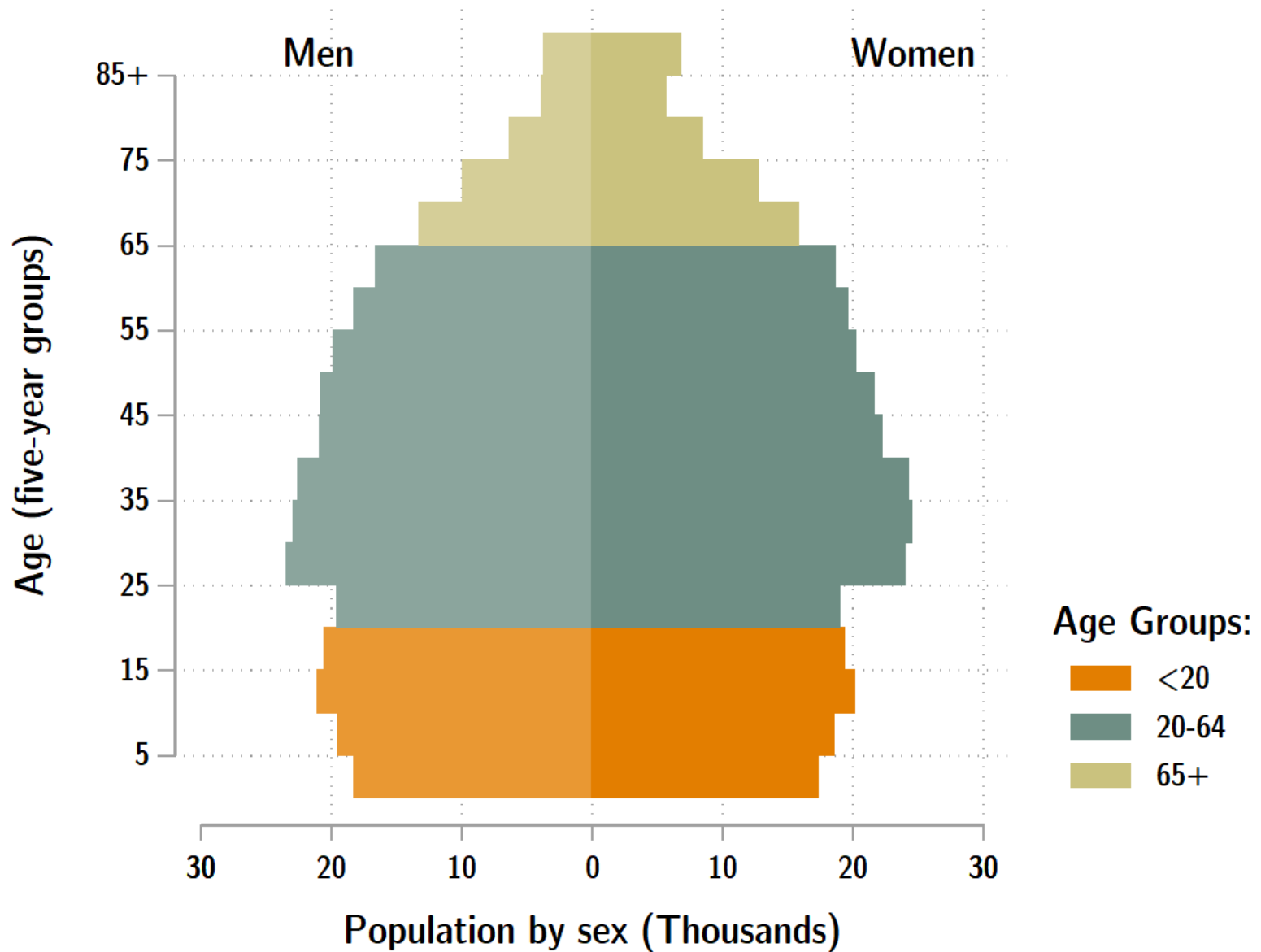
Sources: Esri, USGS, NOAA
State of Oregon GEO;
Oregon Dept. of
Transportation.

0 20
Miles

Population: Washington County



Washington population by age & sex: 2020



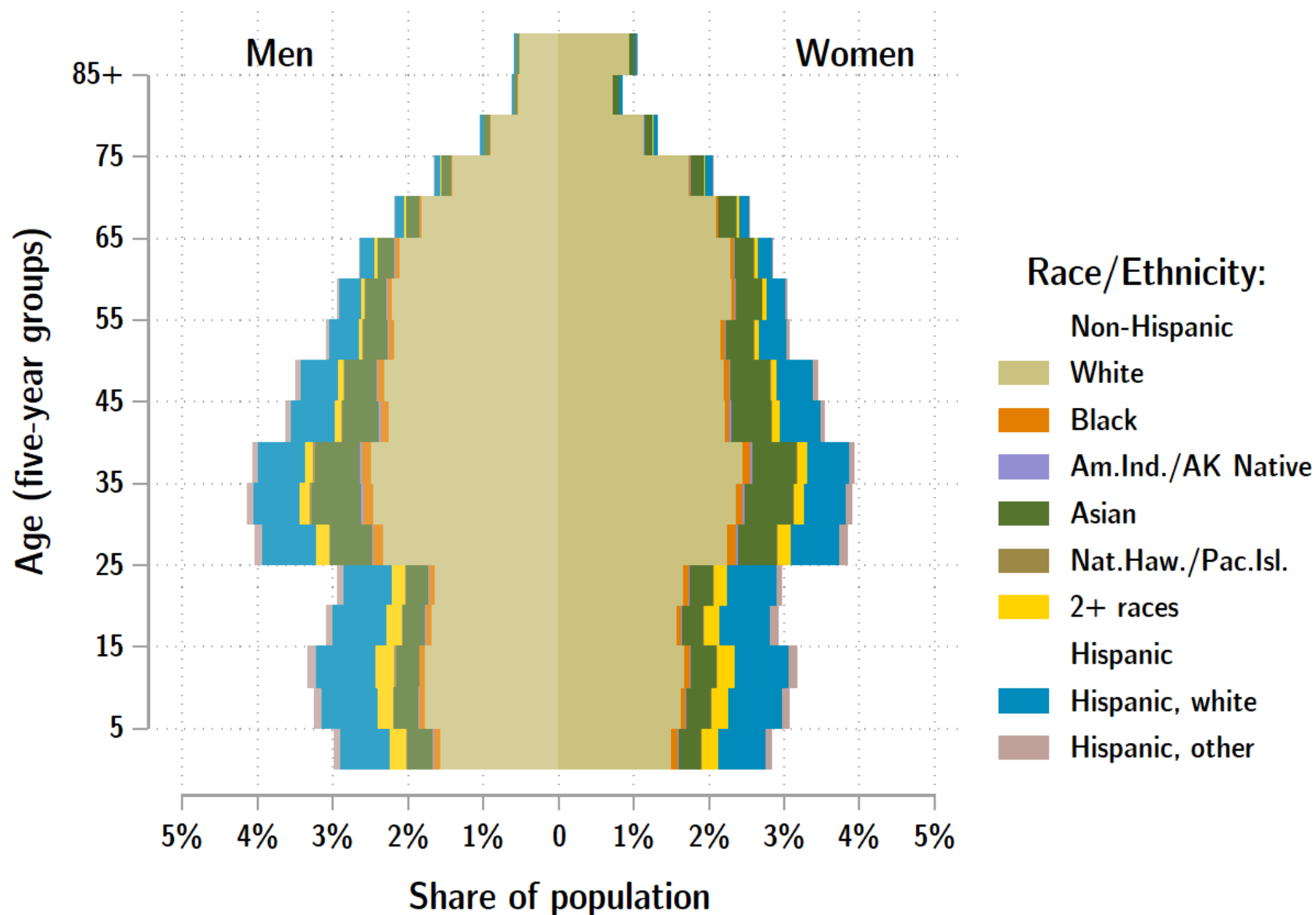
Source: Estimates by Population Research Center, PSU

Age Distribution, Washington County

Age Group	2020 Estimate	2020 Percent of Total	Oregon 2020 Percent of Total
Total population	620,080	100.0%	100.0%
Under age 5	35,543	5.7%	5.4%
Age 5 to 17	105,105	17.0%	14.9%
Age 18 to 64	392,729	63.3%	61.1%
Age 65 and over	86,703	14.0%	18.6%

Source: PSU Population Research Center July 1, 2020 Population Estimates

Washington County population by age & sex: 2019



Source: Estimates by US Census Bureau

Race and Ethnicity, Washington County

	2010 Census	2010 Census Percent	2015-19 ACS Estimate	2015-19 ACS Percent	Oregon 2015-19 ACS Percent
HISPANIC OR LATINO AND RACE					
Total population	529,710	100.0%	589,481	100.0%	100.0%
Hispanic or Latino	83,270	15.7%	98,201	16.7%*	13.0%
Not Hispanic or Latino	446,440	84.3%	491,280	83.3%*	87.0%
White alone	369,453	69.7%	387,456	65.7%*	75.7%
Black or African American alone	8,861	1.7%	11,469	1.9%*	1.8%
American Indian and Alaska Native alone	2,559	0.5%	1,539	0.3%*	0.9%
Asian alone	45,354	8.6%	62,050	10.5%*	4.3%
Native Hawaiian and Other Pacific Islander alone	2,269	0.4%	2,417	0.4%	0.4%
Some Other Race alone	940	0.2%	1,025	0.2%	0.1%
Two or More Races	17,004	3.2%	25,324	4.3%*	3.7%

	2010 Census	2010 Census Percent	2015-19 ACS Estimate	2015-19 ACS Percent	Oregon 2015-19 ACS Percent
RACE ALONE OR IN COMBINATION WITH ONE OR MORE OTHER RACES**					
White	425,774	80.4%	475,997	80.7%	88.8%
Black or African American	14,175	2.7%	18,737	3.2%*	2.9%
American Indian and Alaska Native	9,118	1.7%	11,008	1.9%*	3.1%
Asian	56,063	10.6%	77,491	13.1%*	6.0%
Native Hawaiian and Other Pacific Islander	4,988	0.9%	6,670	1.1%*	0.8%
Some Other Race	44,370	8.4%	35,159	6.0%*	3.6%

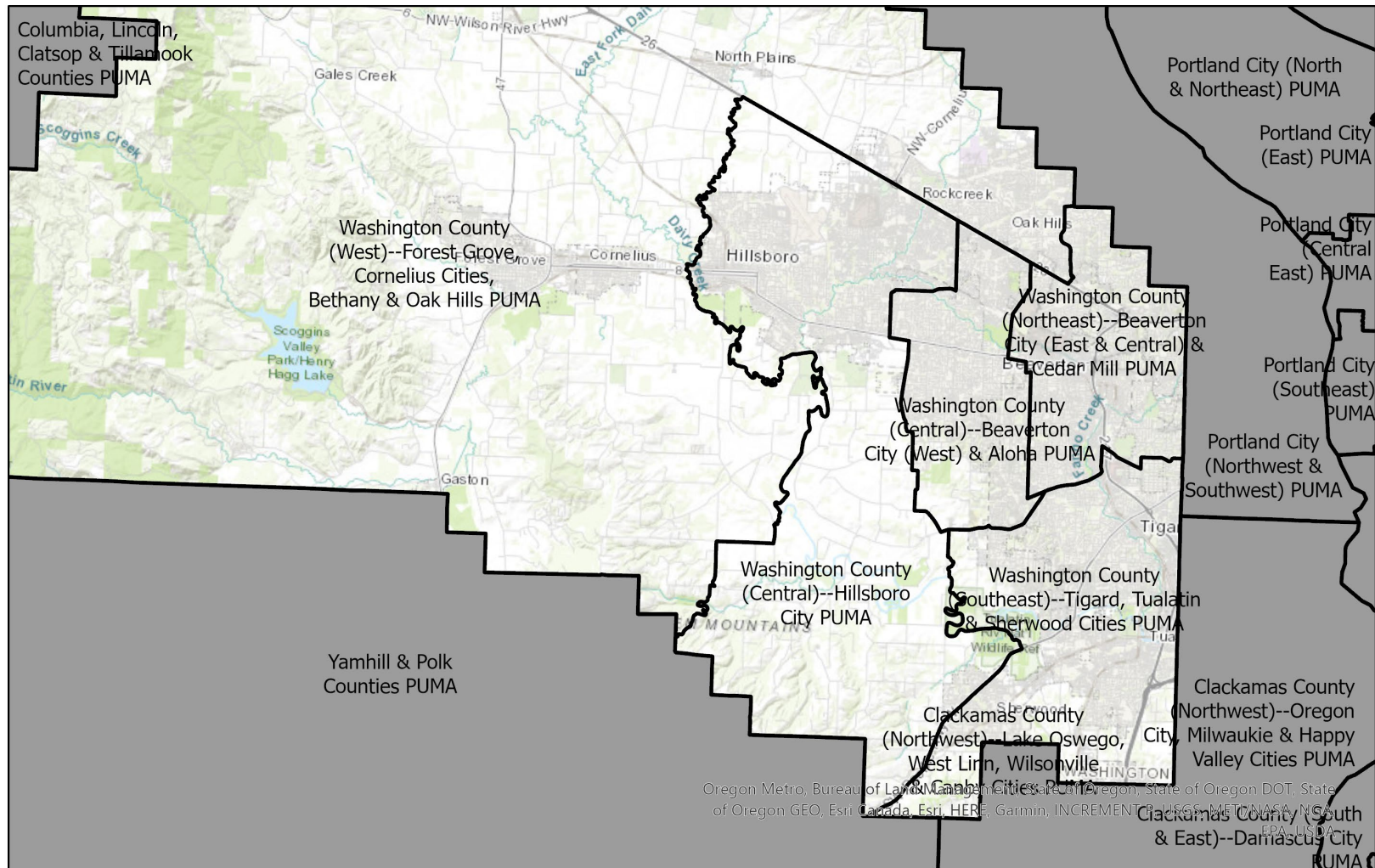
Source: U.S. Census Bureau, 2010 Census and 2019 5-year American Community Survey estimates.

* Difference between 2010 Census and 2015-19 ACS is statistically significant at the 90% confidence level.

** Total may add to more than 100% due to persons identifying as more than one race.

Washington County Public Use Microdata Areas

(Groups of census tracts with 100,000 population minimum)



Source: U.S. Census Bureau.

Prepared by Portland State University
Population Research Center.

Race and Ethnicity, Washington County (Southeast)--Tigard, Tualatin & Sherwood Cities PUMA 1320

	2010 Census	2010 Census Percent	2015-19 ACS Estimate	2015-19 ACS Percent	Oregon 2015-19 ACS Percent
HISPANIC OR LATINO AND RACE					
Total population	109,989	100.0%	119,493	100.0%	100.0%
Hispanic or Latino	13,359	12.1%	14,710	12.3%*	13.0%
Not Hispanic or Latino	96,630	87.9%	104,783	87.7%*	87.0%
White alone	84,043	76.4%	89,544	74.9%*	75.7%
Black or African American alone	1,610	1.5%	1,726	1.4%	1.8%
American Indian and Alaska Native alone	583	0.5%	375	0.3%*	0.9%
Asian alone	6,067	5.5%	7,166	6.0%	4.3%
Native Hawaiian and Other Pacific Islander alone	808	0.7%	1,016	0.9%	0.4%
Some Other Race alone	162	0.1%	280	0.2%	0.1%
Two or More Races	3,357	3.1%	4,676	3.9%*	3.7%

	2010 Census	2010 Census Percent	2015-19 ACS Estimate	2015-19 ACS Percent	Oregon 2015-19 ACS Percent
RACE ALONE OR IN COMBINATION WITH ONE OR MORE OTHER RACES**					
White	93,911	85.4%	104,568	87.5%*	88.8%
Black or African American	2,608	2.4%	3,082	2.6%	2.9%
American Indian and Alaska Native	1,736	1.6%	1,940	1.6%	3.1%
Asian	8,108	7.4%	10,293	8.6%*	6.0%
Native Hawaiian and Other Pacific Islander	1,327	1.2%	1,762	1.5%	0.8%
Some Other Race	6,970	6.3%	3,843	3.2%*	3.6%

Source: U.S. Census Bureau, 2010 Census and 2019 5-year American Community Survey estimates. PUMAs are Public Use Microdata Areas, groups of census tracts with a population of 100,000 or greater.

* Difference between 2010 Census and 2015-19 ACS is statistically significant at the 90% confidence level.

** Total may add to more than 100% due to persons identifying as more than one race.

Race and Ethnicity, Washington County (West)--Forest Grove, Cornelius Cities, Bethany & Oak Hills PUMA 1321

	2010 Census	2010 Census Percent	2015-19 ACS Estimate	2015-19 ACS Percent	Oregon 2015-19 ACS Percent
HISPANIC OR LATINO AND RACE					
Total population	102,784	100.0%	117,439	100.0%	100.0%
Hispanic or Latino	15,517	15.1%	18,908	16.1%*	13.0%
Not Hispanic or Latino	87,267	84.9%	98,531	83.9%*	87.0%
White alone	71,401	69.5%	75,919	64.6%*	75.7%
Black or African American alone	959	0.9%	1,094	0.9%	1.8%
American Indian and Alaska Native alone	459	0.4%	175	0.1%*	0.9%
Asian alone	11,225	10.9%	15,169	12.9%*	4.3%
Native Hawaiian and Other Pacific Islander alone	214	0.2%	258	0.2%	0.4%
Some Other Race alone	149	0.1%	171	0.1%	0.1%
Two or More Races	2,860	2.8%	5,745	4.9%*	3.7%

	2010 Census	2010 Census Percent	2015-19 ACS Estimate	2015-19 ACS Percent	Oregon 2015-19 ACS Percent
RACE ALONE OR IN COMBINATION WITH ONE OR MORE OTHER RACES**					
White	81,454	79.2%	93,333	79.5%	88.8%
Black or African American	1,720	1.7%	2,179	1.9%	2.9%
American Indian and Alaska Native	1,591	1.5%	2,140	1.8%	3.1%
Asian	13,072	12.7%	18,437	15.7%*	6.0%
Native Hawaiian and Other Pacific Islander	694	0.7%	1,250	1.1%	0.8%
Some Other Race	8,432	8.2%	7,475	6.4%*	3.6%

Source: U.S. Census Bureau, 2010 Census and 2019 5-year American Community Survey estimates. PUMAs are Public Use Microdata Areas, groups of census tracts with a population of 100,000 or greater.

* Difference between 2010 Census and 2015-19 ACS is statistically significant at the 90% confidence level.

** Total may add to more than 100% due to persons identifying as more than one race.

Race and Ethnicity, Washington County (Central)--Hillsboro City PUMA 1322

	2010 Census	2010 Census Percent	2015-19 ACS Estimate	2015-19 ACS Percent	Oregon 2015-19 ACS Percent
HISPANIC OR LATINO AND RACE					
Total population	105,194	100.0%	120,907	100.0%	100.0%
Hispanic or Latino	21,987	20.9%	26,291	21.7%*	13.0%
Not Hispanic or Latino	83,207	79.1%	94,616	78.3%*	87.0%
White alone	68,340	65.0%	70,684	58.5%*	75.7%
Black or African American alone	1,756	1.7%	2,646	2.2%*	1.8%
American Indian and Alaska Native alone	577	0.5%	388	0.3%*	0.9%
Asian alone	8,569	8.1%	14,055	11.6%*	4.3%
Native Hawaiian and Other Pacific Islander alone	396	0.4%	497	0.4%	0.4%
Some Other Race alone	174	0.2%	266	0.2%	0.1%
Two or More Races	3,395	3.2%	6,080	5.0%*	3.7%

	2010 Census	2010 Census Percent	2015-19 ACS Estimate	2015-19 ACS Percent	Oregon 2015-19 ACS Percent
RACE ALONE OR IN COMBINATION WITH ONE OR MORE OTHER RACES**					
White	82,909	78.8%	93,644	77.5%*	88.8%
Black or African American	2,806	2.7%	4,718	3.9%*	2.9%
American Indian and Alaska Native	2,175	2.1%	4,008	3.3%*	3.1%
Asian	10,735	10.2%	17,425	14.4%*	6.0%
Native Hawaiian and Other Pacific Islander	1,027	1.0%	1,643	1.4%	0.8%
Some Other Race	10,745	10.2%	9,772	8.1%*	3.6%

Source: U.S. Census Bureau, 2010 Census and 2019 5-year American Community Survey estimates. PUMAs are Public Use Microdata Areas, groups of census tracts with a population of 100,000 or greater.

* Difference between 2010 Census and 2015-19 ACS is statistically significant at the 90% confidence level.

** Total may add to more than 100% due to persons identifying as more than one race.

Race and Ethnicity, Washington County (Central)--Beaverton City (West) & Aloha PUMA 1323

	2010 Census	2010 Census Percent	2015-19 ACS Estimate	2015-19 ACS Percent	Oregon 2015-19 ACS Percent
HISPANIC OR LATINO AND RACE					
Total population	107,680	100.0%	117,500	100.0%	100.0%
Hispanic or Latino	16,918	15.7%	19,686	16.8%*	13.0%
Not Hispanic or Latino	90,762	84.3%	97,814	83.2%*	87.0%
White alone	70,091	65.1%	71,040	60.5%*	75.7%
Black or African American alone	2,636	2.4%	4,177	3.6%*	1.8%
American Indian and Alaska Native alone	529	0.5%	364	0.3%*	0.9%
Asian alone	12,947	12.0%	16,880	14.4%*	4.3%
Native Hawaiian and Other Pacific Islander alone	392	0.4%	481	0.4%	0.4%
Some Other Race alone	217	0.2%	44	0.0%*	0.1%
Two or More Races	3,950	3.7%	4,828	4.1%	3.7%

	2010 Census	2010 Census Percent	2015-19 ACS Estimate	2015-19 ACS Percent	Oregon 2015-19 ACS Percent
RACE ALONE OR IN COMBINATION WITH ONE OR MORE OTHER RACES**					
White	81,641	75.8%	87,273	74.3%*	88.8%
Black or African American	4,002	3.7%	5,824	5.0%*	2.9%
American Indian and Alaska Native	1,867	1.7%	1,612	1.4%*	3.1%
Asian	15,571	14.5%	19,967	17.0%*	6.0%
Native Hawaiian and Other Pacific Islander	965	0.9%	1,237	1.1%	0.8%
Some Other Race	9,321	8.7%	8,176	7.0%*	3.6%

Source: U.S. Census Bureau, 2010 Census and 2019 5-year American Community Survey estimates. PUMAs are Public Use Microdata Areas, groups of census tracts with a population of 100,000 or greater.

* Difference between 2010 Census and 2015-19 ACS is statistically significant at the 90% confidence level.

** Total may add to more than 100% due to persons identifying as more than one race.

Race and Ethnicity, Washington County (Northeast)--Beaverton City (East & Central) & Cedar Mill PUMA 1324

	2010 Census	2010 Census Percent	2015-19 ACS Estimate	2015-19 ACS Percent	Oregon 2015-19 ACS Percent
HISPANIC OR LATINO AND RACE					
Total population	104,063	100.0%	113,983	100.0%	100.0%
Hispanic or Latino	15,489	14.9%	18,606	16.3%*	13.0%
Not Hispanic or Latino	88,574	85.1%	95,377	83.7%*	87.0%
White alone	75,578	72.6%	80,110	70.3%*	75.7%
Black or African American alone	1,900	1.8%	1,826	1.6%	1.8%
American Indian and Alaska Native alone	411	0.4%	237	0.2%*	0.9%
Asian alone	6,546	6.3%	8,780	7.7%*	4.3%
Native Hawaiian and Other Pacific Islander alone	459	0.4%	165	0.1%*	0.4%
Some Other Race alone	238	0.2%	264	0.2%	0.1%
Two or More Races	3,442	3.3%	3,995	3.5%	3.7%

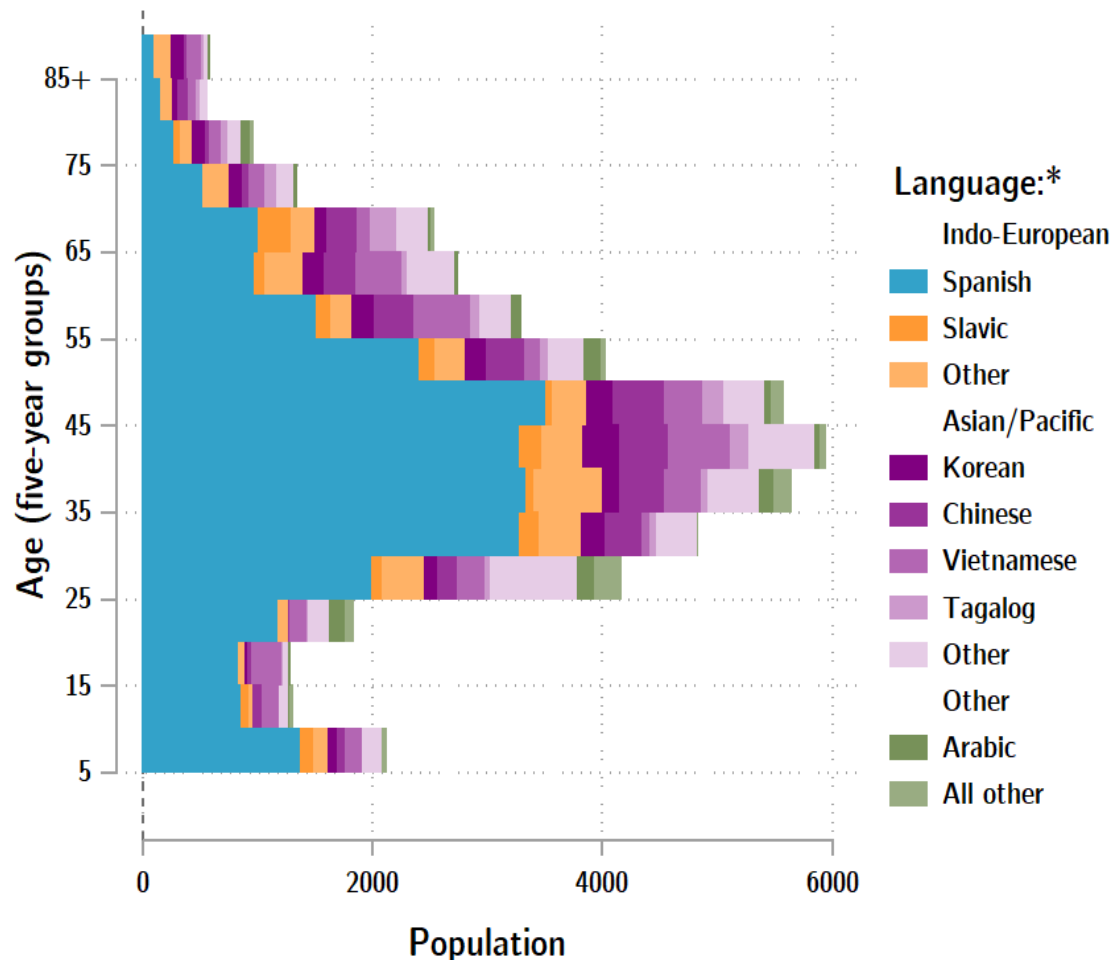
	2010 Census	2010 Census Percent	2015-19 ACS Estimate	2015-19 ACS Percent	Oregon 2015-19 ACS Percent
RACE ALONE OR IN COMBINATION WITH ONE OR MORE OTHER RACES**					
White	85,859	82.5%	97,020	85.1%*	88.8%
Black or African American	3,039	2.9%	2,934	2.6%	2.9%
American Indian and Alaska Native	1,749	1.7%	1,308	1.1%*	3.1%
Asian	8,577	8.2%	11,369	10.0%*	6.0%
Native Hawaiian and Other Pacific Islander	975	0.9%	778	0.7%	0.8%
Some Other Race	8,902	8.6%	5,893	5.2%*	3.6%

Source: U.S. Census Bureau, 2010 Census and 2019 5-year American Community Survey estimates. PUMAs are Public Use Microdata Areas, groups of census tracts with a population of 100,000 or greater.

* Difference between 2010 Census and 2015-19 ACS is statistically significant at the 90% confidence level.

** Total may add to more than 100% due to persons identifying as more than one race.

Washington County population by age & language: 2019



Language Spoken at Home Speak English less than "very well" Washington County

Languages	Estimate
Total Population Age 5 and Older	553,510
Speaking English less than "very well"	48,321
Spanish	26,523
Russian, Polish, or other Slavic languages	1,526
Other Indo-European languages	4,016
Korean	2,424
Chinese (incl. Cantonese and Mandarin)	3,132
Vietnamese	3,795
Tagalog (incl. Filipino)	1,170
Other Asian and Pacific Island languages	4,274
Arabic	1,203
Other languages	258

Source: U.S. Census Bureau American Community Survey 2019 5-year estimates, Table C16001.

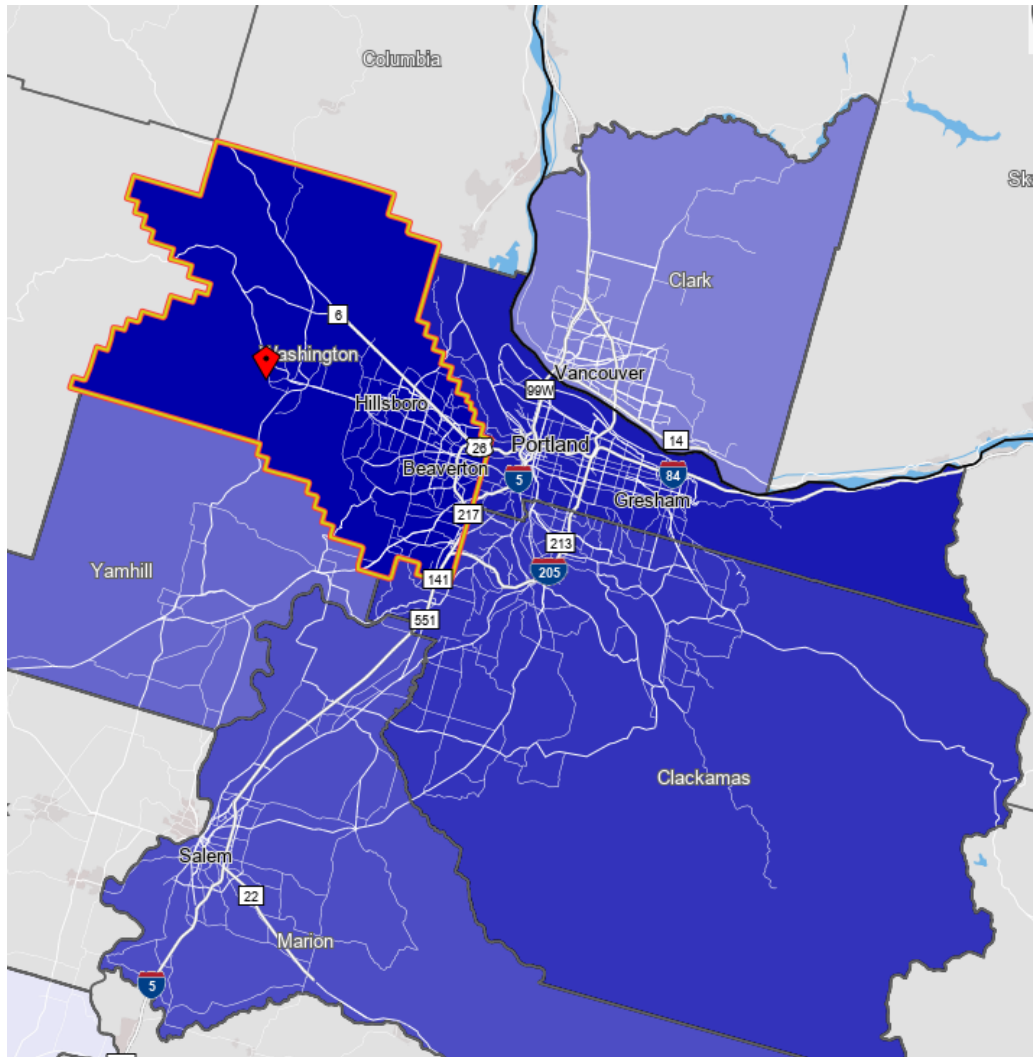
Note: * Languages for persons who speak English less than very well.

Source: ACS tables B16004, C16001, PUMS; PEP estimates; Analysis by PRC, PSU

[Link to Table C16001](#) for all counties, including margins of error.

[Visualization](#) of language data by census tract within county.

Washington County Commute Flows

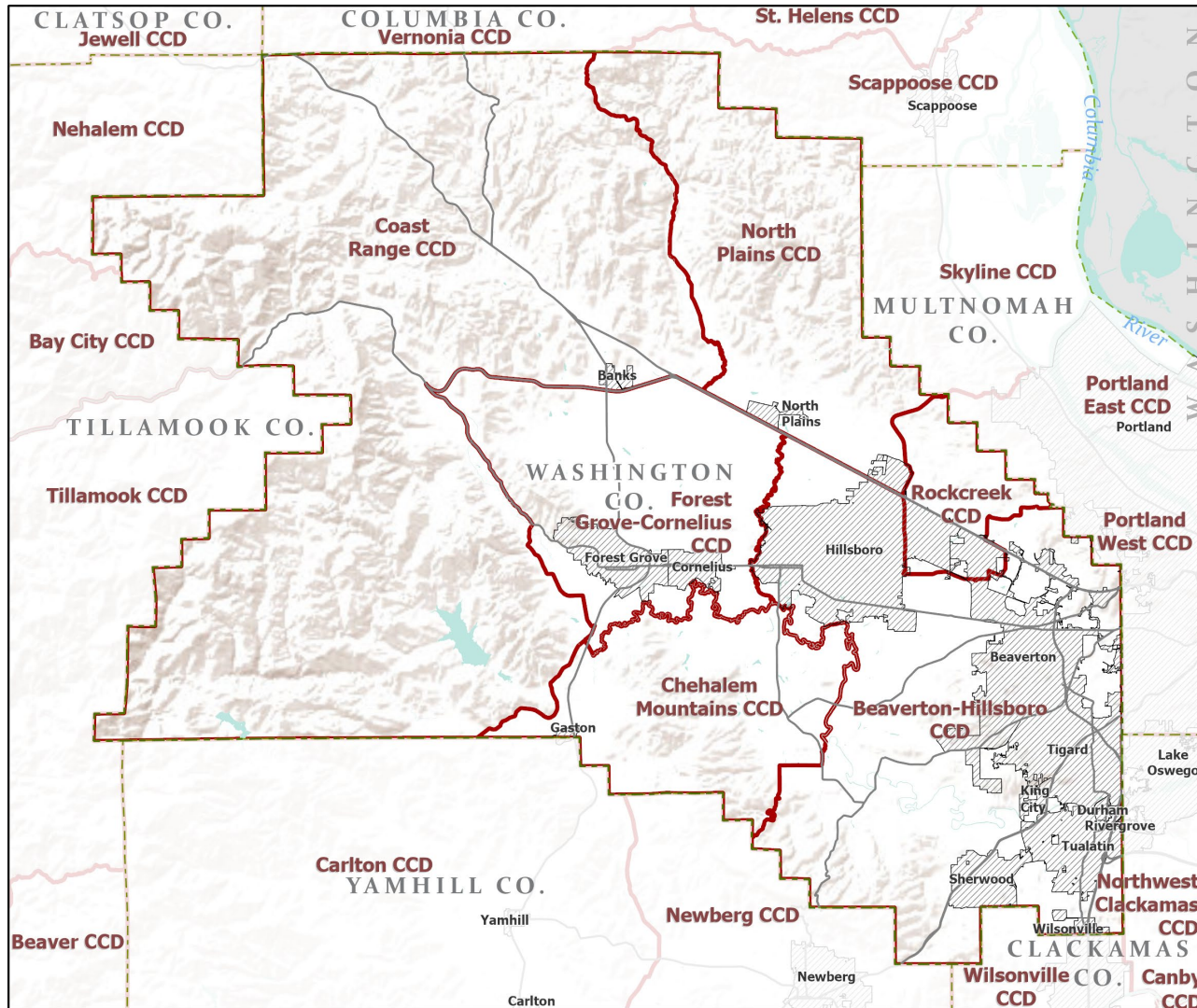


Explore sub-county commute flows in [this interactive map](#).

Jobs Counts by Counties Where Workers are Employed - All Jobs

2018		
	Count	Share
All Counties	289,078	100.0%
Washington County, OR	155,342	53.7%
Multnomah County, OR	79,155	27.4%
Clackamas County, OR	24,066	8.3%
Marion County, OR	7,335	2.5%
Yamhill County, OR	3,697	1.3%
Clark County, WA	2,905	1.0%
Lane County, OR	2,361	0.8%
Deschutes County, OR	1,218	0.4%
King County, WA	1,148	0.4%
Benton County, OR	972	0.3%
All Other Locations	10,879	3.8%

County Subdivisions (CCDs): Washington County



- Counties
- Incorporated Cities
- Highways
- County Subdivisions (CCDs)



Portland State University,
Population Research Center,
May 2021.
www.pdx.edu/prc

Sources: Esri, USGS, NOAA
State of Oregon GEO;
Oregon Dept. of
Transportation.

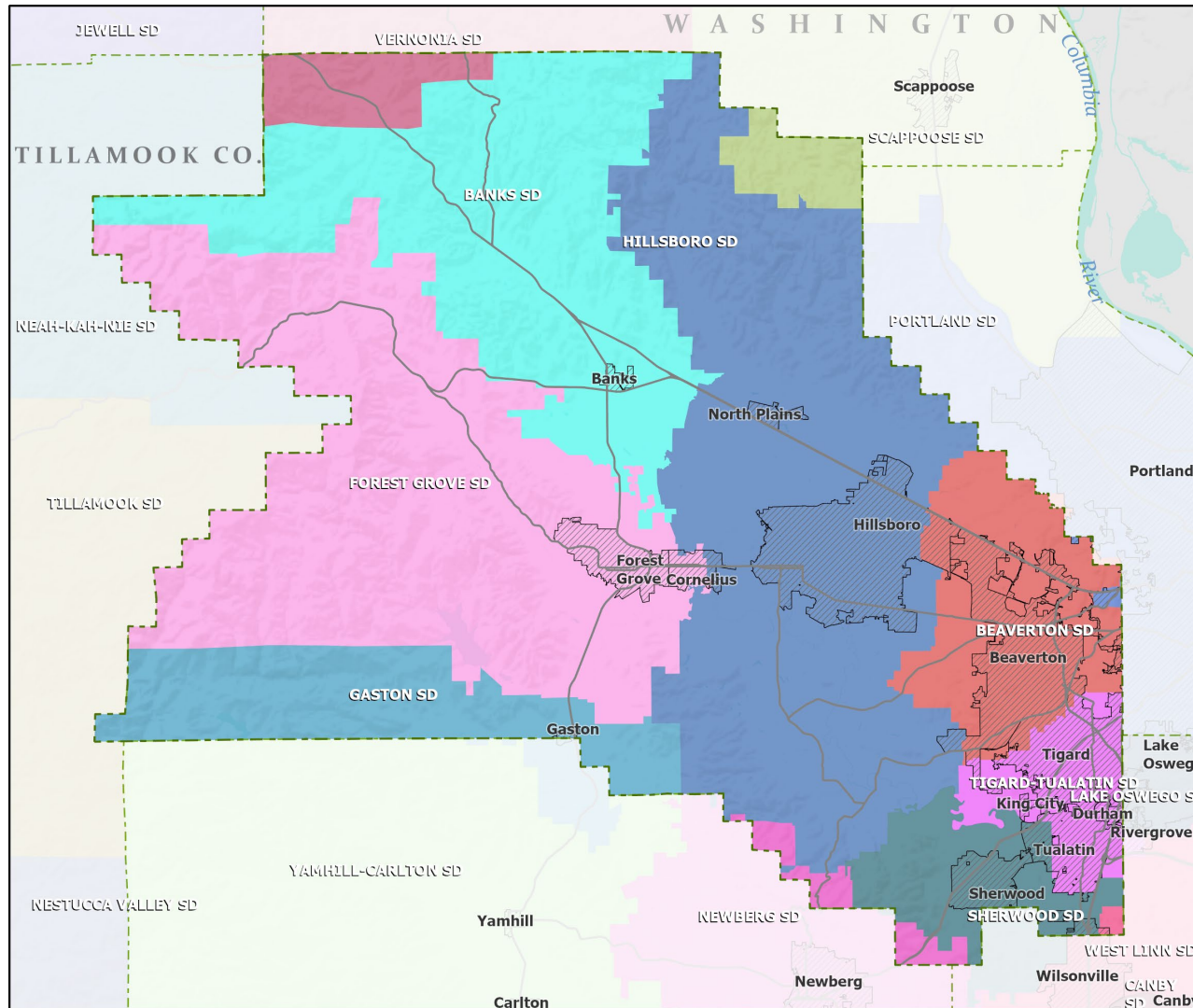
Washington County Employment by Sector by Census County Division

Sector	Oregon	County Total	Beaverton -Hillsboro CCD	Chehalem Mountains CCD	Coast Range CCD	Forest Grove- Cornelius CCD	North Plains CCD	Rockcreek CCD
Total, All Jobs*	1,904,601	304,422	249,455	1,403	1,717	11,720	3,512	36,615
Goods-Producing	18.6%	22.5%	23.0%	60.6%	53.5%	29.3%	47.6%	11.1%
Natural Resources and Mining	2.7%	1.0%	0.5%	46.5%	14.4%	6.7%	2.8%	0.1%
Construction	5.9%	5.6%	5.6%	11.6%	21.7%	5.4%	11.3%	4.3%
Manufacturing	10.0%	15.8%	16.9%	2.5%	17.4%	17.2%	33.5%	6.8%
Service Providing	81.4%	77.5%	77.0%	39.4%	46.5%	70.7%	52.4%	88.9%
Trade, Transportation, and Utilities	18.6%	18.2%	19.0%	4.4%	16.0%	14.0%	16.1%	15.4%
Information	2.0%	2.9%	2.4%	1.1%	0.1%	0.9%	2.0%	6.8%
Financial Activities	4.6%	5.3%	5.5%	0.8%	0.8%	2.1%	1.9%	6.2%
Professional and Business Services	13.4%	19.1%	19.2%	8.1%	4.7%	5.8%	12.4%	24.8%
Education and Health Services	23.1%	17.0%	16.1%	13.4%	10.7%	33.3%	8.6%	18.9%
Leisure and Hospitality	11.4%	9.2%	8.9%	5.6%	7.9%	9.0%	9.8%	11.4%
Other Services	4.2%	3.5%	3.4%	3.9%	2.9%	3.7%	1.0%	4.8%
Public Administration	4.2%	2.2%	2.5%	2.1%	3.6%	1.9%	0.7%	0.6%

Source: U.S. Census Bureau, LEHD Origin-Destination Employment Statistics, 2018 Q2

* Jobs covered by unemployment insurance and federal workers.

School Districts: Washington County



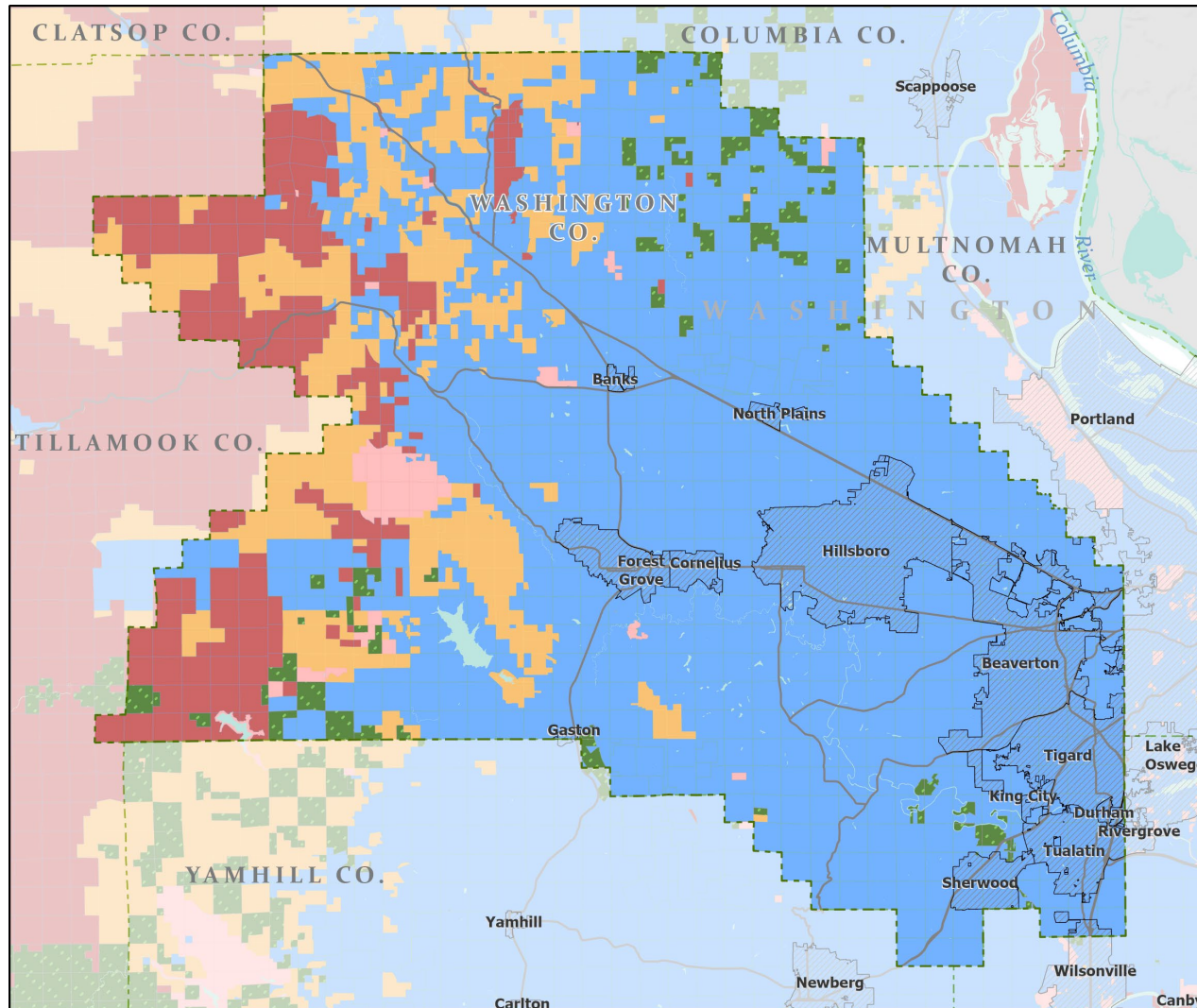
- Counties
- Incorporated Cities
- Highways



Portland State University,
Population Research Center,
May 2021.
www.pdx.edu/prc

Sources: Esri, USGS, NOAA
State of Oregon GEO;
Oregon Dept. of
Transportation.

Land Ownership: Washington County



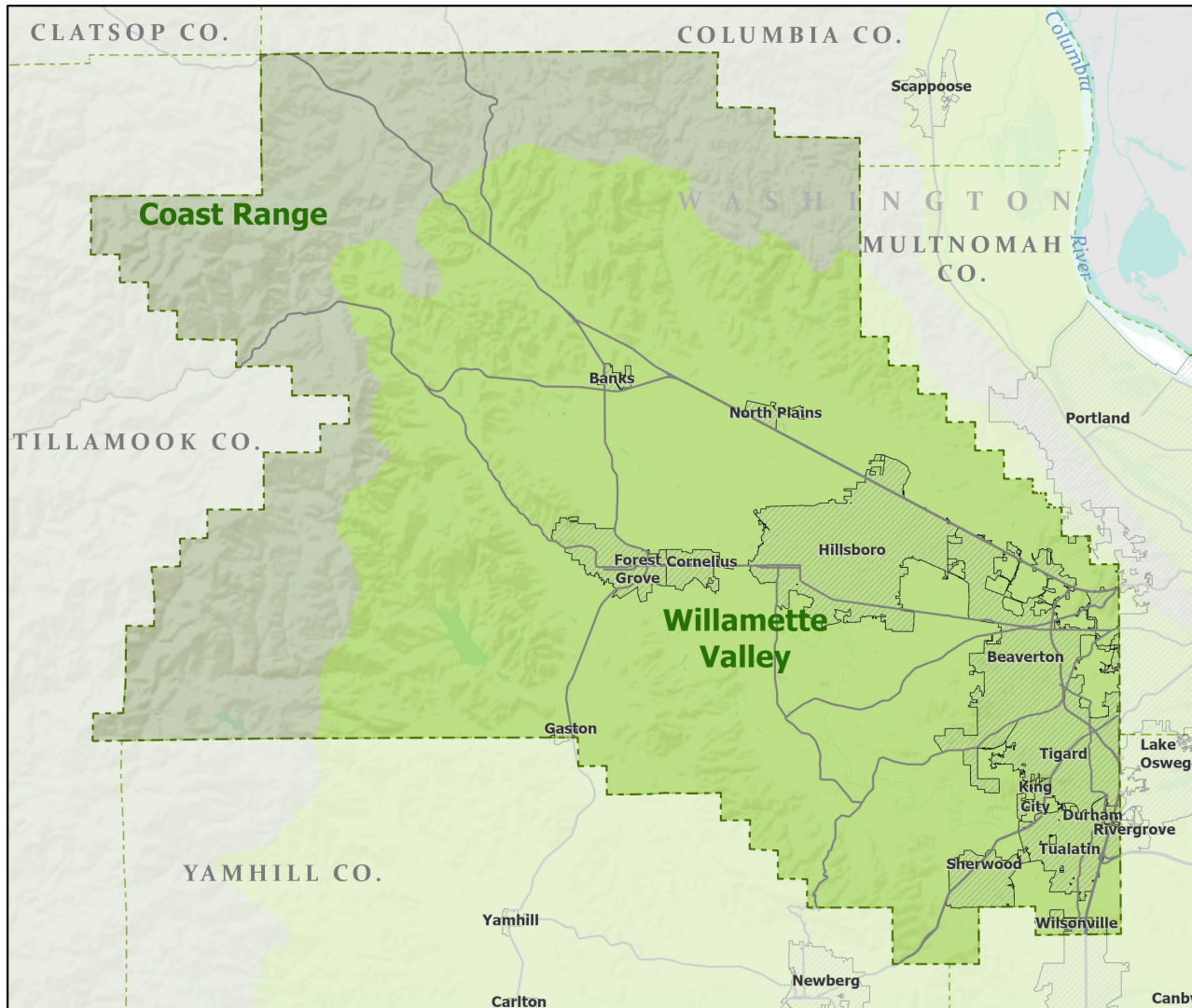
Portland State University,
Population Research Center,
May 2021.
www.pdx.edu/prc

Sources: Esri, USGS, NOAA

0 20
Miles

State of Oregon GEO;
Oregon Dept. of
Transportation; Bureau of
Land management.

Ecoregions: Washington County



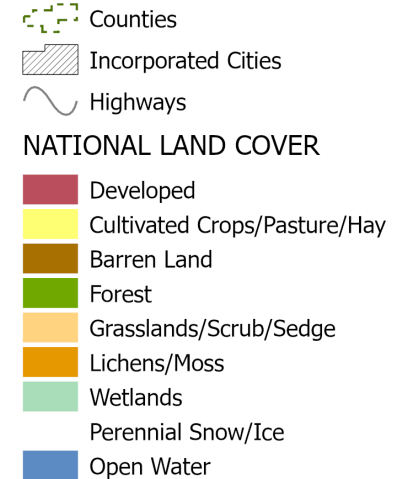
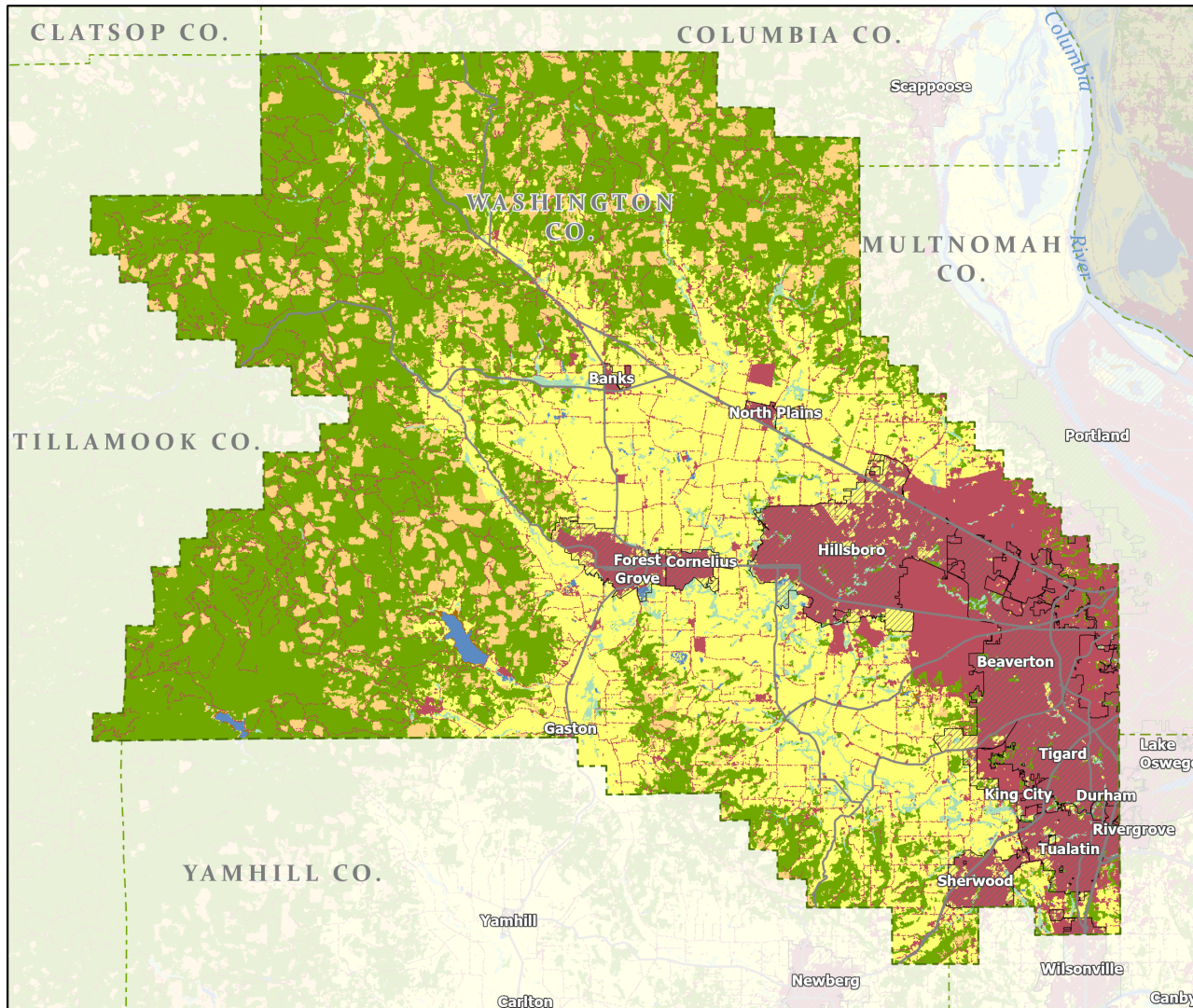
- Counties
- Incorporated Cities
- Highways
- LEVEL III ECOREGIONS OF OREGON (2006)
 - Coast Range
 - Willamette Valley



Portland State University,
Population Research Center,
May 2021.
www.pdx.edu/prc

Sources: Esri, USGS, NOAA
State of Oregon GEO;
Oregon Dept. of
Transportation.

Land Cover: Washington County



Portland State University,
Population Research Center,
May 2021.
www.pdx.edu/prc

Sources: Esri, USGS, NOAA
State of Oregon GEO;
Oregon Dept. of
Transportation.

