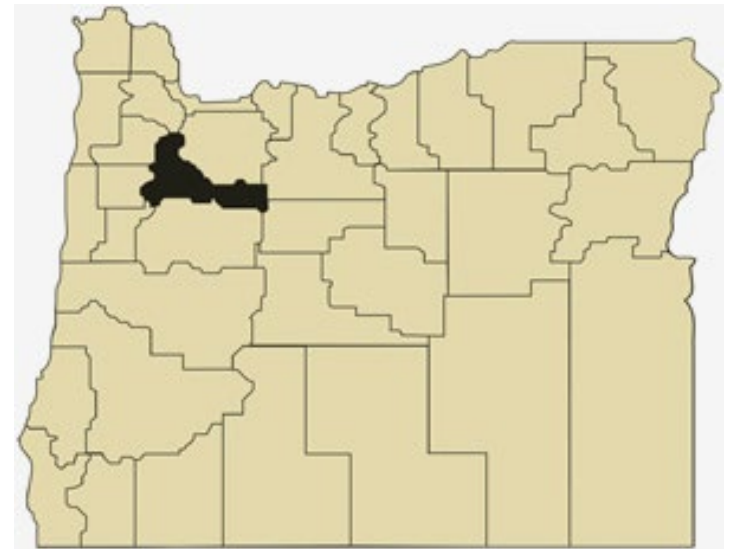


Marion County Overview

House and Senate Committees on Redistricting

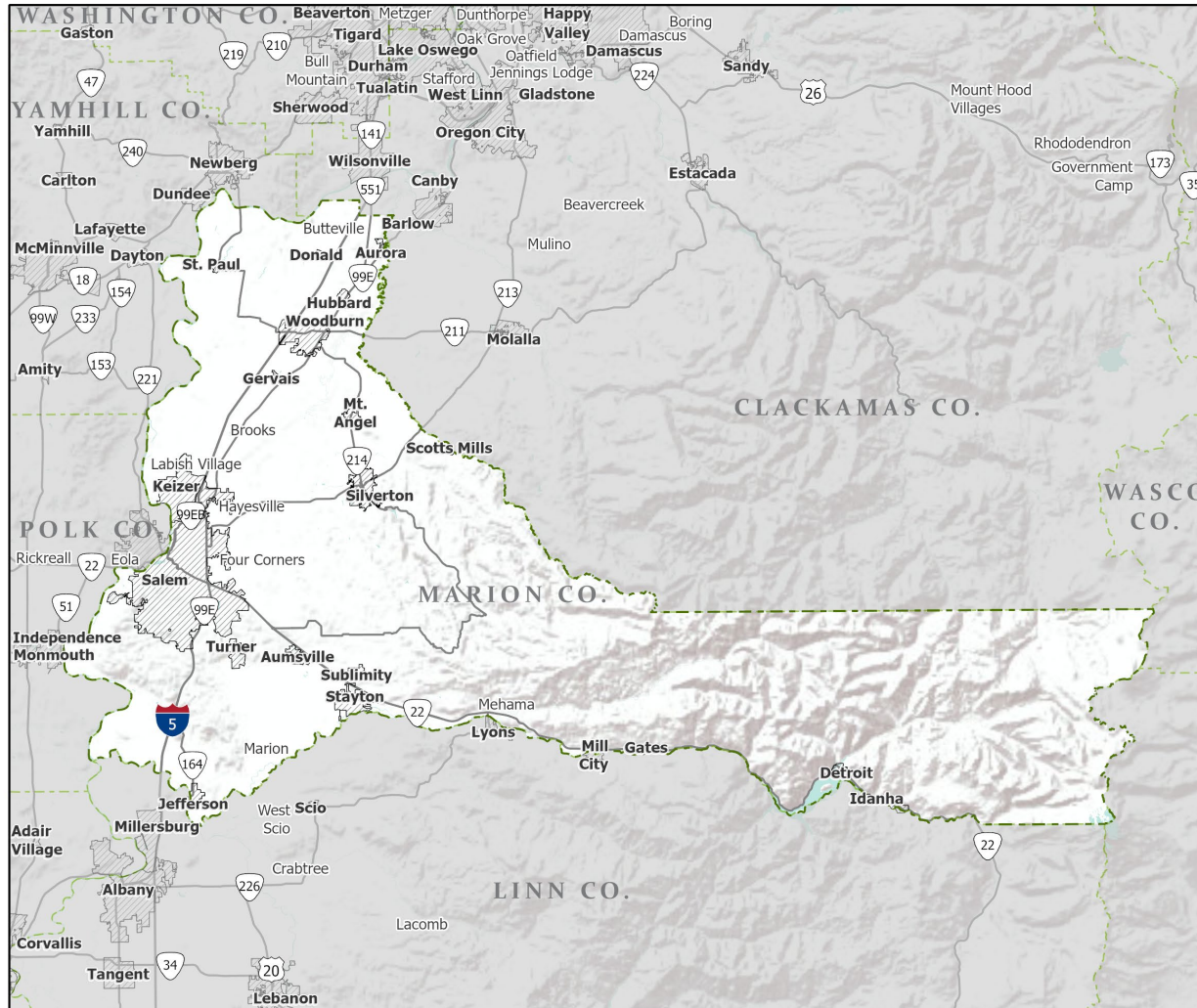
June 15, 2021

July 1, 2020 population estimate	349,120
Population rank	5th
Share of state population	8.2%
Density (per square mile)	292.4
Density rank	3rd
Area (square miles)	1,194
Area rank	25th
Share of state area	1.2%



Sources: PSU Population Research Center; Oregon Blue Book.

Highways: Marion County



- Counties
- Incorporated Cities
- Highways

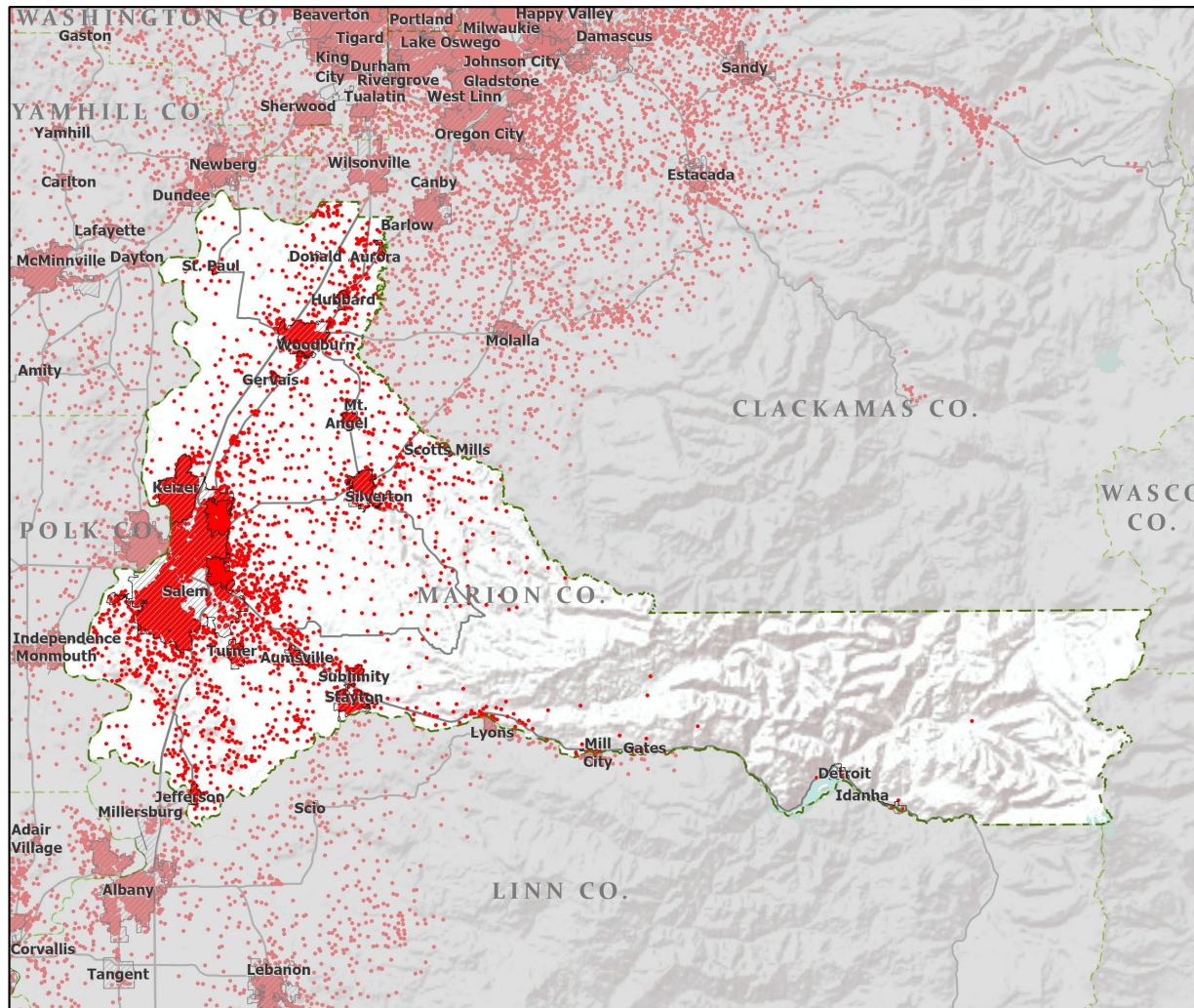


Portland State University,
Population Research Center,
May 2021.
www.pdx.edu/prc

Sources: Esri, USGS, NOAA
State of Oregon GEO;
Oregon Dept. of
Transportation.

0 50 Miles

Population: Marion County



- Counties
- Incorporated Cities
- Highways
- 2010 POPULATION
 - 1 Dot = 25 persons

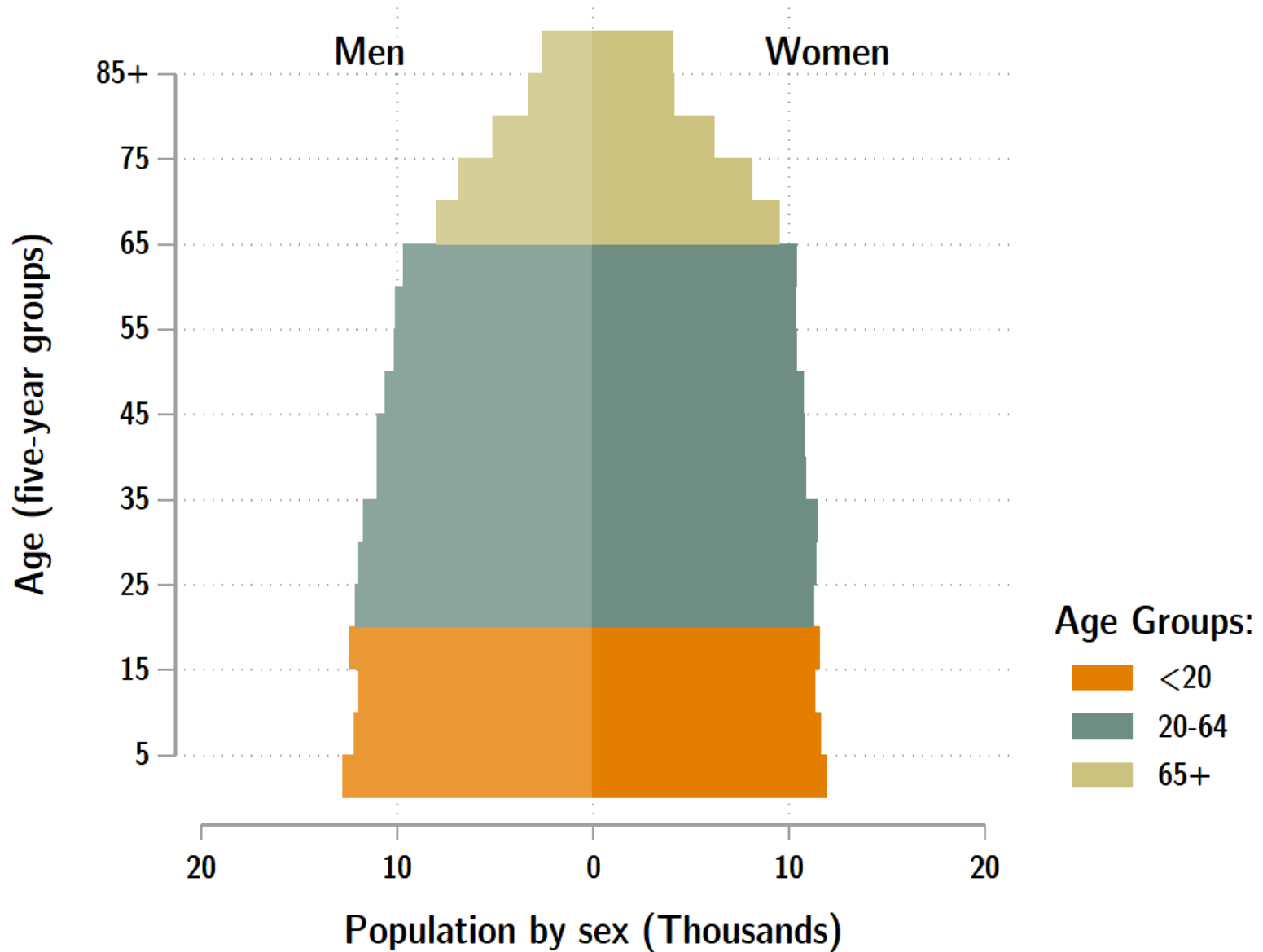


Portland State University,
Population Research Center,
May 2021.
www.pdx.edu/prc

Sources: Esri, USGS, NOAA
State of Oregon GEO;
Oregon Dept. of
Transportation.

0 50 Miles

Marion population by age & sex: 2020



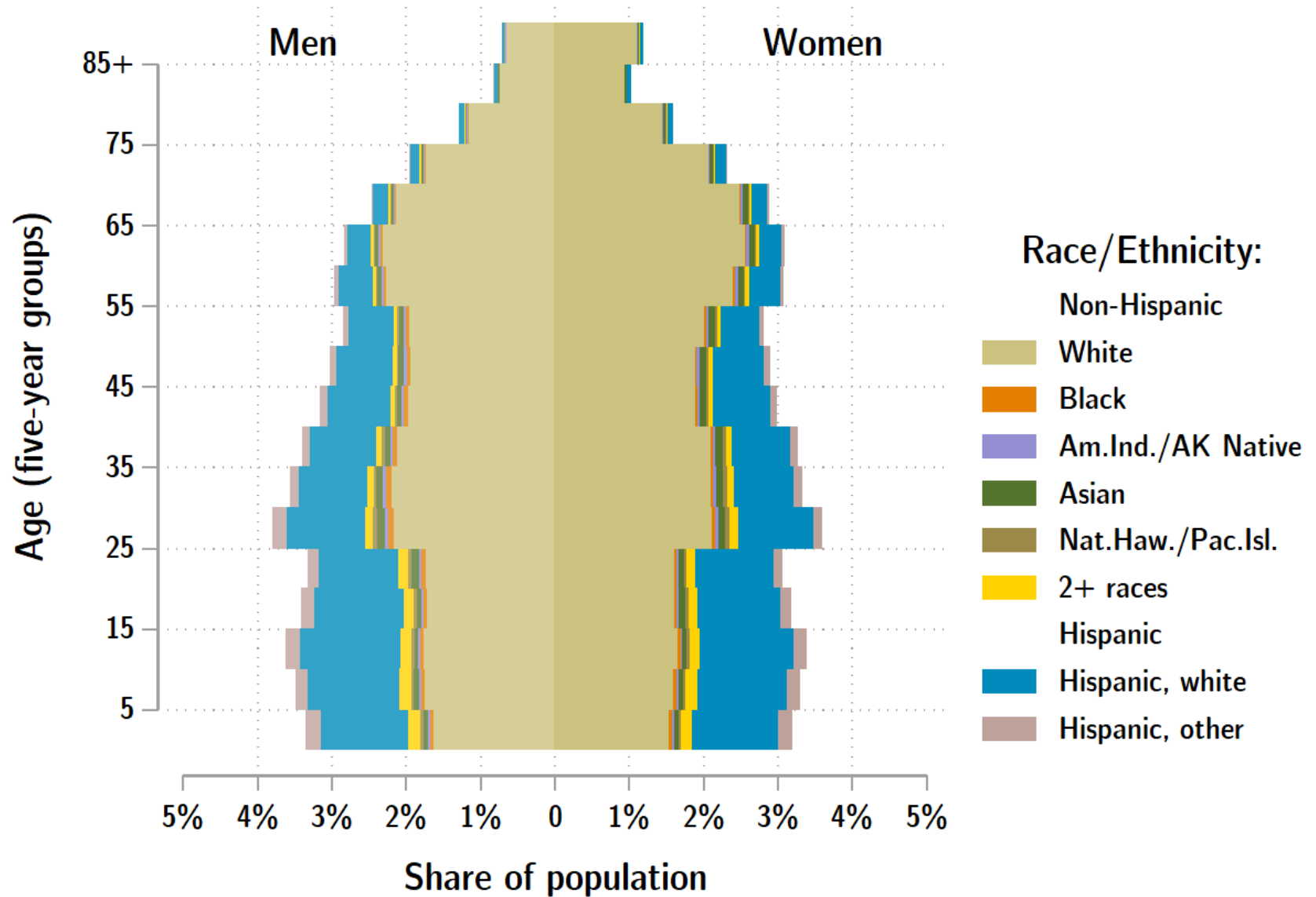
Source: Estimates by Population Research Center, PSU

Age Distribution, Marion County

Age Group	2020 Estimate	2020 Percent of Total	Oregon 2020 Percent of Total
Total population	349,120	100.0%	100.0%
Under age 5	24,622	7.1%	5.4%
Age 5 to 17	61,003	17.5%	14.9%
Age 18 to 64	205,756	58.9%	61.1%
Age 65 and over	57,740	16.5%	18.6%

Source: PSU Population Research Center July 1, 2020 Population Estimates

Marion County population by age & sex: 2019



Source: Estimates by US Census Bureau

Race and Ethnicity, Marion County

	2010 Census	2010 Census Percent	2015-19 ACS Estimate	2015-19 ACS Percent	Oregon 2015-19 ACS Percent
HISPANIC OR LATINO AND RACE					
Total population	315,335	100.0%	339,641	100.0%	100.0%
Hispanic or Latino	76,594	24.3%	90,277	26.6%*	13.0%
Not Hispanic or Latino	238,741	75.7%	249,364	73.4%*	87.0%
White alone	216,758	68.7%	222,354	65.5%*	75.7%
Black or African American alone	2,906	0.9%	3,596	1.1%	1.8%
American Indian and Alaska Native alone	3,290	1.0%	1,958	0.6%*	0.9%
Asian alone	5,790	1.8%	6,792	2.0%*	4.3%
Native Hawaiian and Other Pacific Islander alone	2,254	0.7%	2,973	0.9%*	0.4%
Some Other Race alone	411	0.1%	327	0.1%	0.1%
Two or More Races	7,332	2.3%	11,364	3.3%*	3.7%

	2010 Census	2010 Census Percent	2015-19 ACS Estimate	2015-19 ACS Percent	Oregon 2015-19 ACS Percent
RACE ALONE OR IN COMBINATION WITH ONE OR MORE OTHER RACES**					
White	257,744	81.7%	296,929	87.4%*	88.8%
Black or African American	5,519	1.8%	7,031	2.1%*	2.9%
American Indian and Alaska Native	9,363	3.0%	16,893	5.0%*	3.1%
Asian	8,766	2.8%	10,733	3.2%*	6.0%
Native Hawaiian and Other Pacific Islander	3,310	1.0%	4,530	1.3%*	0.8%
Some Other Race	43,844	13.9%	26,863	7.9%*	3.6%

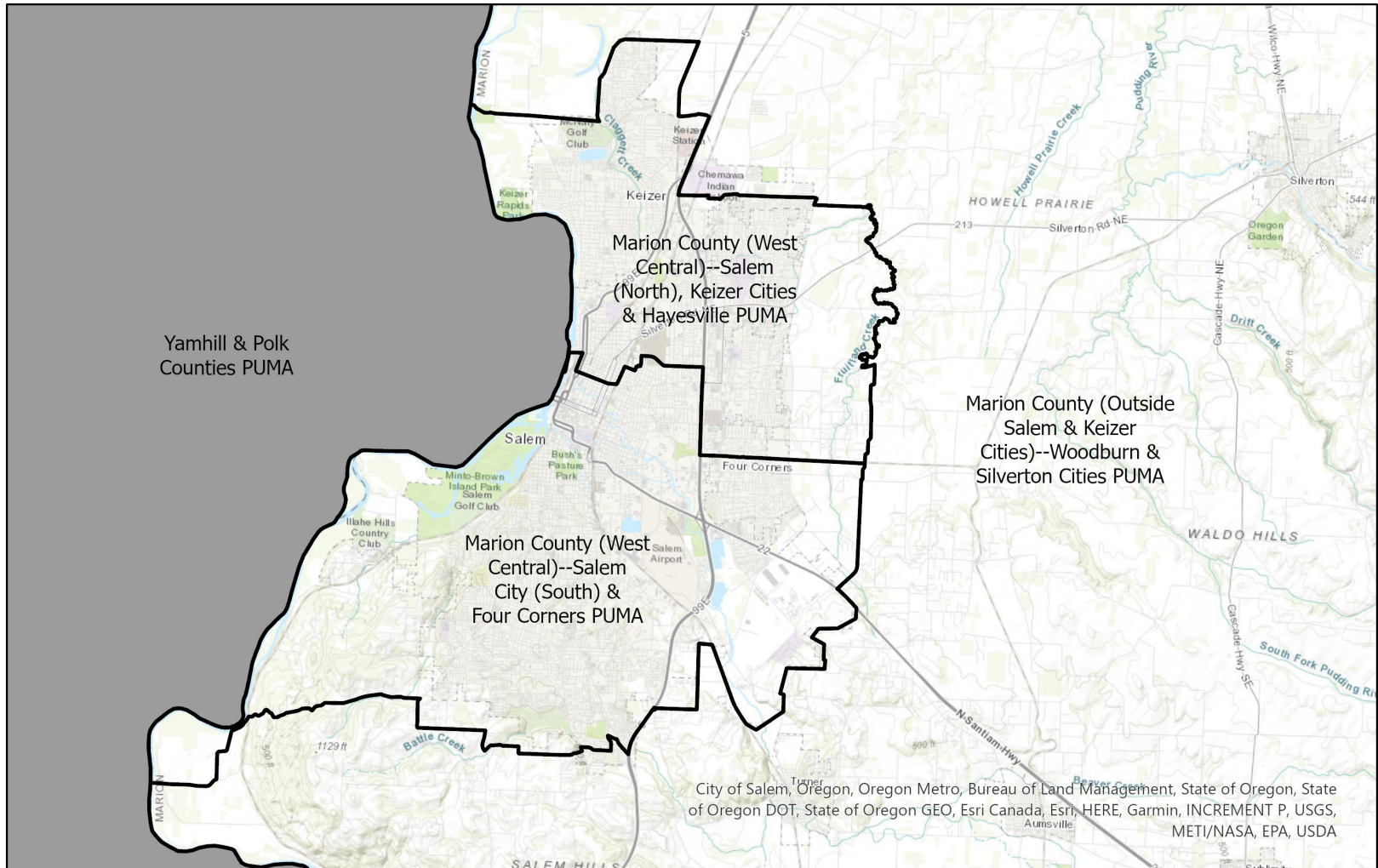
Source: U.S. Census Bureau, 2010 Census and 2019 5-year American Community Survey estimates.

* Difference between 2010 Census and 2015-19 ACS is statistically significant at the 90% confidence level.

** Total may add to more than 100% due to persons identifying as more than one race.

Marion County Public Use Microdata Areas

(Groups of census tracts with 100,000 population minimum)



Source: U.S. Census Bureau.

Prepared by Portland State University
Population Research Center.

Race and Ethnicity, Marion County (West Central)— Salem (North), Keizer Cities & Hayesville PUMA 1103

	2010 Census	2010 Census Percent	2015-19 ACS Estimate	2015-19 ACS Percent	Oregon 2015-19 ACS Percent
HISPANIC OR LATINO AND RACE					
Total population	102,870	100.0%	110,805	100.0%	100.0%
Hispanic or Latino	32,449	31.5%	38,236	34.5%*	13.0%
Not Hispanic or Latino	70,421	68.5%	72,569	65.5%*	87.0%
White alone	61,683	60.0%	61,912	55.9%*	75.7%
Black or African American alone	904	0.9%	1,393	1.3%	1.8%
American Indian and Alaska Native alone	1,187	1.2%	936	0.8%*	0.9%
Asian alone	2,614	2.5%	2,475	2.2%	4.3%
Native Hawaiian and Other Pacific Islander alone	1,283	1.2%	1,284	1.2%	0.4%
Some Other Race alone	134	0.1%	61	0.1%	0.1%
Two or More Races	2,616	2.5%	4,508	4.1%*	3.7%

	2010 Census	2010 Census Percent	2015-19 ACS Estimate	2015-19 ACS Percent	Oregon 2015-19 ACS Percent
RACE ALONE OR IN COMBINATION WITH ONE OR MORE OTHER RACES**					
White	78,496	76.3%	93,547	84.4%*	88.8%
Black or African American	1,972	1.9%	3,143	2.8%*	2.9%
American Indian and Alaska Native	3,165	3.1%	7,197	6.5%*	3.1%
Asian	3,756	3.7%	4,074	3.7%	6.0%
Native Hawaiian and Other Pacific Islander	1,722	1.7%	2,089	1.9%	0.8%
Some Other Race	18,879	18.4%	10,987	9.9%*	3.6%

Source: U.S. Census Bureau, 2010 Census and 2019 5-year American Community Survey estimates. PUMAs are Public Use Microdata Areas, groups of census tracts with a population of 100,000 or greater.

* Difference between 2010 Census and 2015-19 ACS is statistically significant at the 90% confidence level.

** Total may add to more than 100% due to persons identifying as more than one race.

Race and Ethnicity, Marion County (West Central)— Salem City (South) & Four Corners PUMA 1104

	2010 Census	2010 Census Percent	2015-19 ACS Estimate	2015-19 ACS Percent	Oregon 2015-19 ACS Percent
HISPANIC OR LATINO AND RACE					
Total population	102,106	100.0%	110,443	100.0%	100.0%
Hispanic or Latino	16,167	15.8%	21,410	19.4%*	13.0%
Not Hispanic or Latino	85,939	84.2%	89,033	80.6%*	87.0%
White alone	77,031	75.4%	78,503	71.1%*	75.7%
Black or African American alone	1,638	1.6%	1,485	1.3%	1.8%
American Indian and Alaska Native alone	1,194	1.2%	486	0.4%*	0.9%
Asian alone	2,267	2.2%	2,989	2.7%	4.3%
Native Hawaiian and Other Pacific Islander alone	833	0.8%	1,533	1.4%*	0.4%
Some Other Race alone	165	0.2%	13	0.0%*	0.1%
Two or More Races	2,811	2.8%	4,024	3.6%*	3.7%

	2010 Census	2010 Census Percent	2015-19 ACS Estimate	2015-19 ACS Percent	Oregon 2015-19 ACS Percent
RACE ALONE OR IN COMBINATION WITH ONE OR MORE OTHER RACES**					
White	87,126	85.3%	97,833	88.6%*	88.8%
Black or African American	2,629	2.6%	2,767	2.5%	2.9%
American Indian and Alaska Native	3,015	3.0%	5,293	4.8%*	3.1%
Asian	3,398	3.3%	4,636	4.2%*	6.0%
Native Hawaiian and Other Pacific Islander	1,191	1.2%	1,924	1.7%*	0.8%
Some Other Race	9,181	9.0%	5,721	5.2%*	3.6%

Source: U.S. Census Bureau, 2010 Census and 2019 5-year American Community Survey estimates. PUMAs are Public Use Microdata Areas, groups of census tracts with a population of 100,000 or greater.

* Difference between 2010 Census and 2015-19 ACS is statistically significant at the 90% confidence level.

** Total may add to more than 100% due to persons identifying as more than one race.

Race and Ethnicity, Marion County (Outside Salem & Keizer Cities)-- Woodburn & Silverton Cities PUMA 1105

	2010 Census	2010 Census Percent	2015-19 ACS Estimate	2015-19 ACS Percent	Oregon 2015-19 ACS Percent
HISPANIC OR LATINO AND RACE					
Total population	110,359	100.0%	118,393	100.0%	100.0%
Hispanic or Latino	27,978	25.4%	30,631	25.9%*	13.0%
Not Hispanic or Latino	82,381	74.6%	87,762	74.1%*	87.0%
White alone	78,044	70.7%	81,939	69.2%*	75.7%
Black or African American alone	364	0.3%	718	0.6%	1.8%
American Indian and Alaska Native alone	909	0.8%	536	0.5%*	0.9%
Asian alone	909	0.8%	1,328	1.1%	4.3%
Native Hawaiian and Other Pacific Islander alone	138	0.1%	156	0.1%	0.4%
Some Other Race alone	112	0.1%	253	0.2%	0.1%
Two or More Races	1,905	1.7%	2,832	2.4%*	3.7%

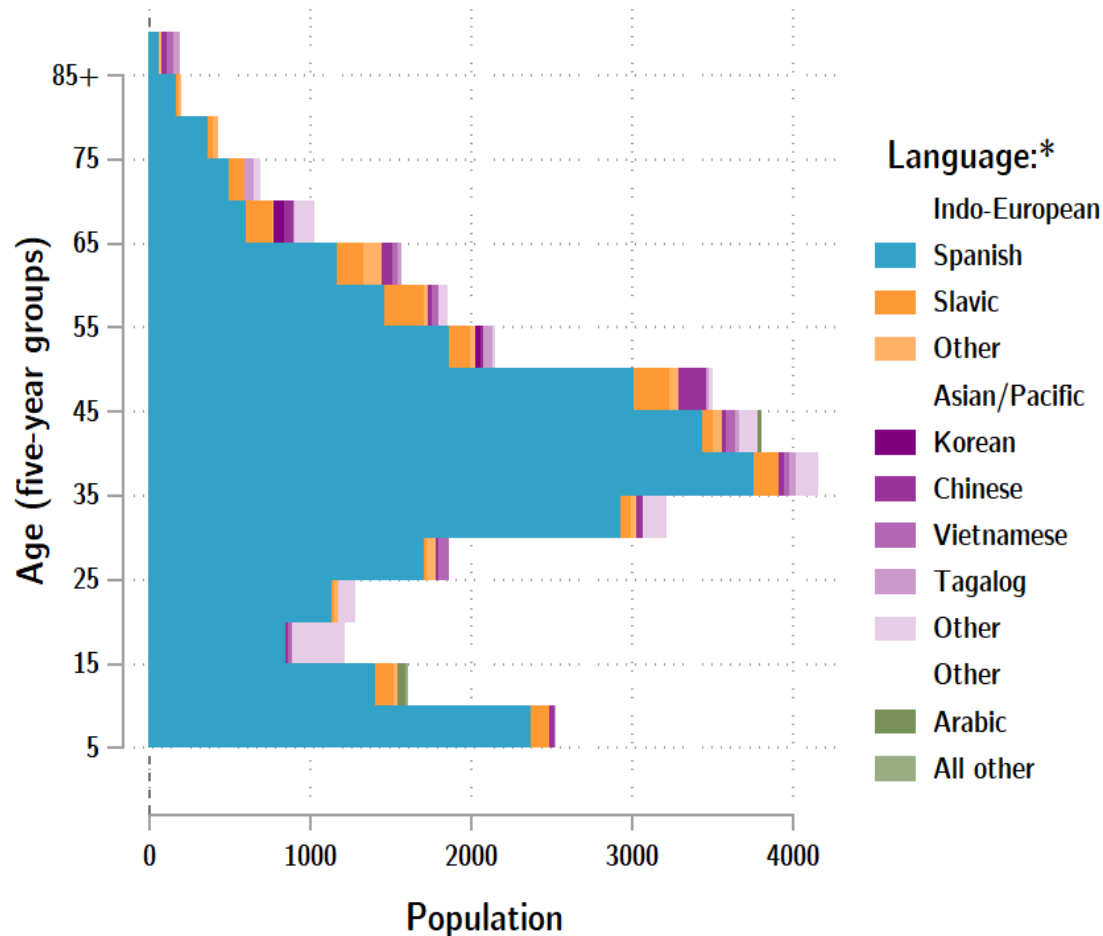
	2010 Census	2010 Census Percent	2015-19 ACS Estimate	2015-19 ACS Percent	Oregon 2015-19 ACS Percent
RACE ALONE OR IN COMBINATION WITH ONE OR MORE OTHER RACES**					
White	92,122	83.5%	105,549	89.2%*	88.8%
Black or African American	918	0.8%	1,121	0.9%	2.9%
American Indian and Alaska Native	3,183	2.9%	4,403	3.7%*	3.1%
Asian	1,612	1.5%	2,023	1.7%	6.0%
Native Hawaiian and Other Pacific Islander	397	0.4%	517	0.4%	0.8%
Some Other Race	15,784	14.3%	10,155	8.6%*	3.6%

Source: U.S. Census Bureau, 2010 Census and 2019 5-year American Community Survey estimates.
PUMAs are Public Use Microdata Areas, groups of census tracts with a population of 100,000 or greater.

* Difference between 2010 Census and 2015-19 ACS is statistically significant at the 90% confidence level.

** Total may add to more than 100% due to persons identifying as more than one race.

Marion County population by age & language: 2019



Language Spoken at Home Speak English less than "very well" Marion County

Languages	Estimate
Total Population Age 5 and Older	316,989
Speaking English less than "very well"	32,390
Spanish	27,375
Russian, Polish, or other Slavic languages	1,469
Other Indo-European languages	634
Korean	115
Chinese (incl. Cantonese and Mandarin)	573
Vietnamese	492
Tagalog (incl. Filipino)	276
Other Asian and Pacific Island languages	1,192
Arabic	76
Other languages	188

Source: U.S. Census Bureau American Community Survey 2019 5-year estimates, Table C16001.

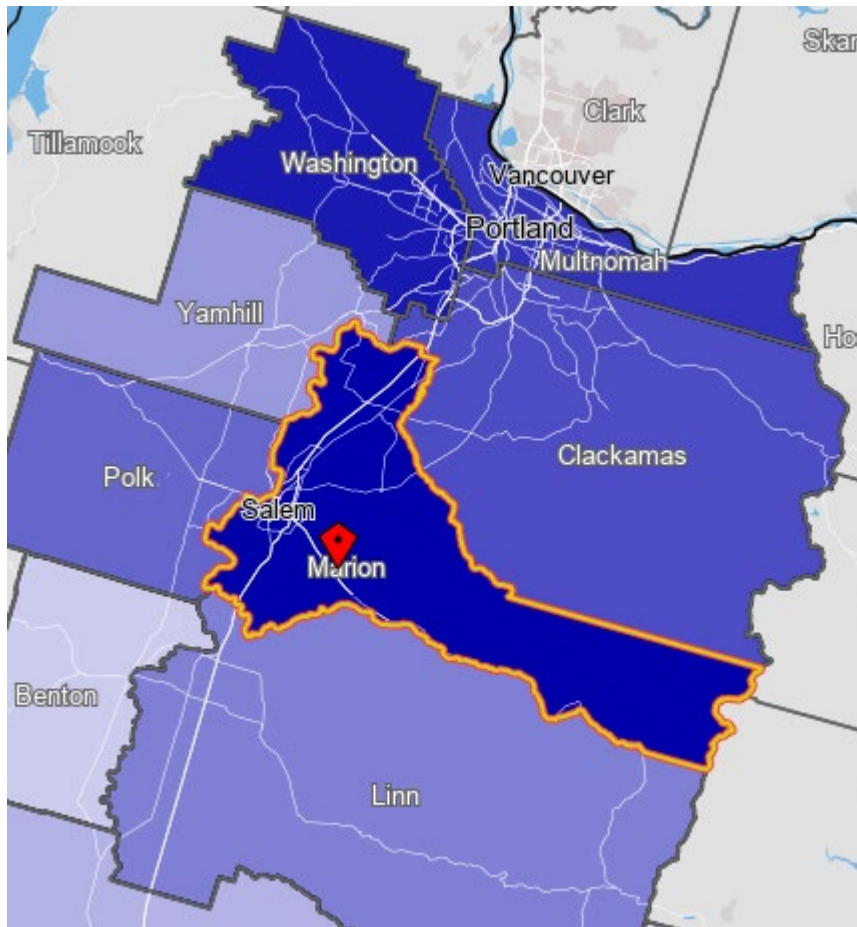
Note: * Languages for persons who speak English less than very well.

Source: ACS tables B16004, C16001, PUMS; PEP estimates; Analysis by PRC, PSU

[Link to Table C16001](#) for all counties, including margins of error.

[Visualization](#) of language data by census tract within county.

Marion County Commute Flows

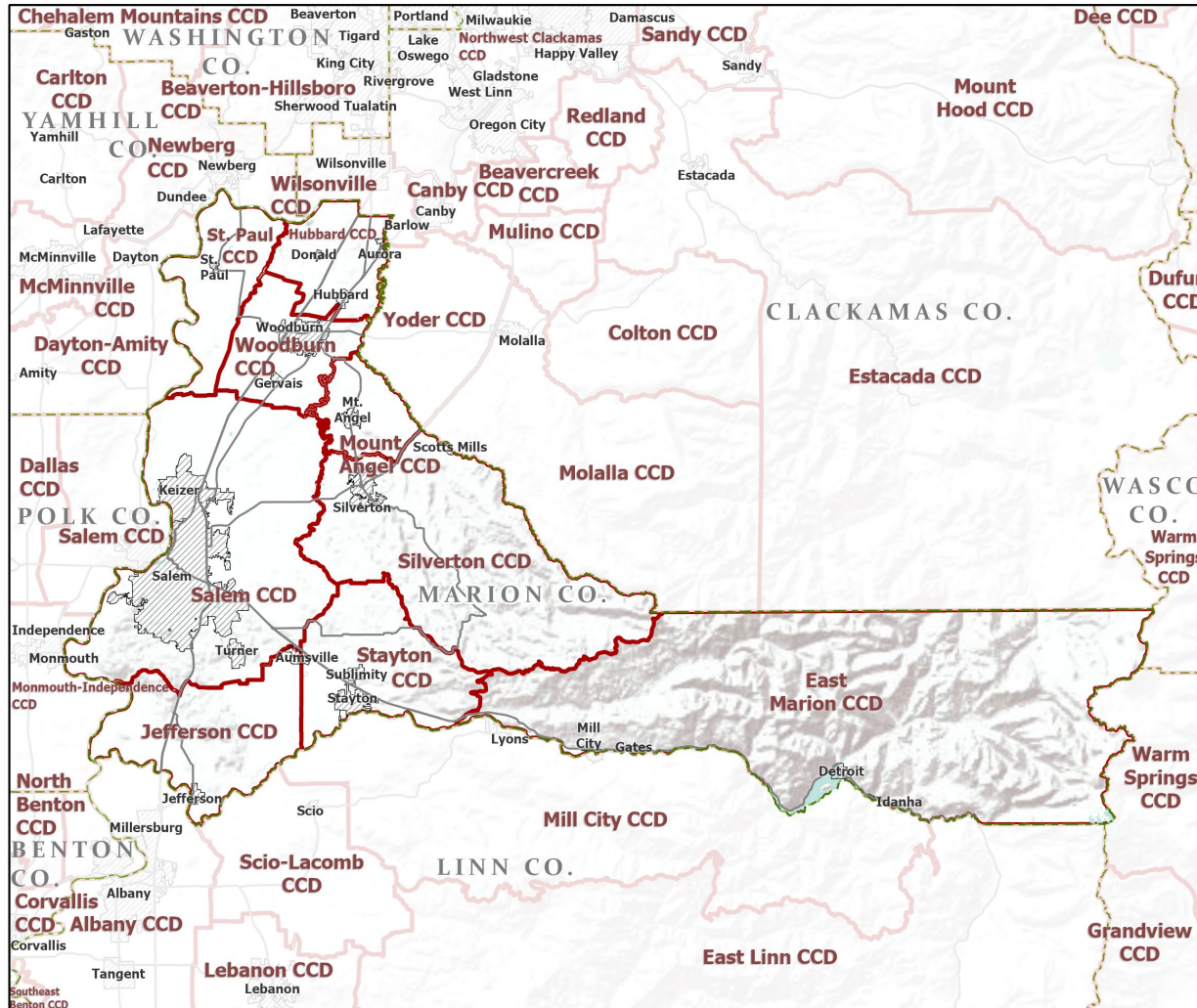


Explore sub-county commute flows in [this interactive map](#).

Jobs Counts by Counties Where Workers are Employed - All Jobs

2018		
	Count	Share
All Counties	143,909	100.0%
Marion County, OR	86,493	60.1%
Washington County, OR	11,756	8.2%
Multnomah County, OR	11,377	7.9%
Clackamas County, OR	9,922	6.9%
Polk County, OR	5,431	3.8%
Linn County, OR	4,720	3.3%
Yamhill County, OR	2,503	1.7%
Lane County, OR	2,500	1.7%
Benton County, OR	1,939	1.3%
Deschutes County, OR	875	0.6%
All Other Locations	6,393	4.4%

County Subdivisions (CCDs): Marion County



- Counties
- Incorporated Cities
- Highways
- County Subdivisions (CCDs)



Portland State University,
Population Research Center,
May 2021.
www.pdx.edu/prc

Sources: Esri, USGS, NOAA
State of Oregon GEO;
Oregon Dept. of
Transportation.

0 50 Miles

Marion County Employment by Sector by Census County Division (1 of 2)

Sector	Oregon	County Total	East Marion CCD	Hubbard CCD	Jefferson CCD	Mount Angel CCD
Total, All Jobs*	1,904,601	157,051	478	5,889	2,030	2,377
Goods-Producing	18.6%	19.7%	18.4%	52.0%	37.8%	56.5%
Natural Resources and Mining	2.7%	5.3%	1.7%	17.4%	18.6%	35.7%
Construction	5.9%	7.4%	5.9%	21.9%	11.1%	8.8%
Manufacturing	10.0%	6.9%	10.9%	12.7%	8.1%	12.0%
Service Providing	81.4%	80.3%	81.6%	48.0%	62.2%	43.5%
Trade, Transportation, and Utilities	18.6%	16.9%	11.5%	27.4%	12.3%	3.2%
Information	2.0%	1.1%	0.0%	0.0%	0.4%	0.4%
Financial Activities	4.6%	4.2%	0.6%	0.6%	2.9%	1.2%
Professional and Business Services	13.4%	10.0%	2.9%	7.8%	7.2%	7.7%
Education and Health Services	23.1%	23.2%	4.2%	8.2%	25.0%	17.8%
Leisure and Hospitality	11.4%	8.4%	49.0%	1.3%	4.5%	4.3%
Other Services	4.2%	3.9%	6.1%	2.2%	5.6%	7.9%
Public Administration	4.2%	12.7%	7.3%	0.6%	4.3%	0.9%

Continued on next slide

Source: U.S. Census Bureau, LEHD Origin-Destination Employment Statistics, 2018 Q2

* Jobs covered by unemployment insurance and federal workers.

Marion County Employment by Sector by Census County Division (2 of 2)

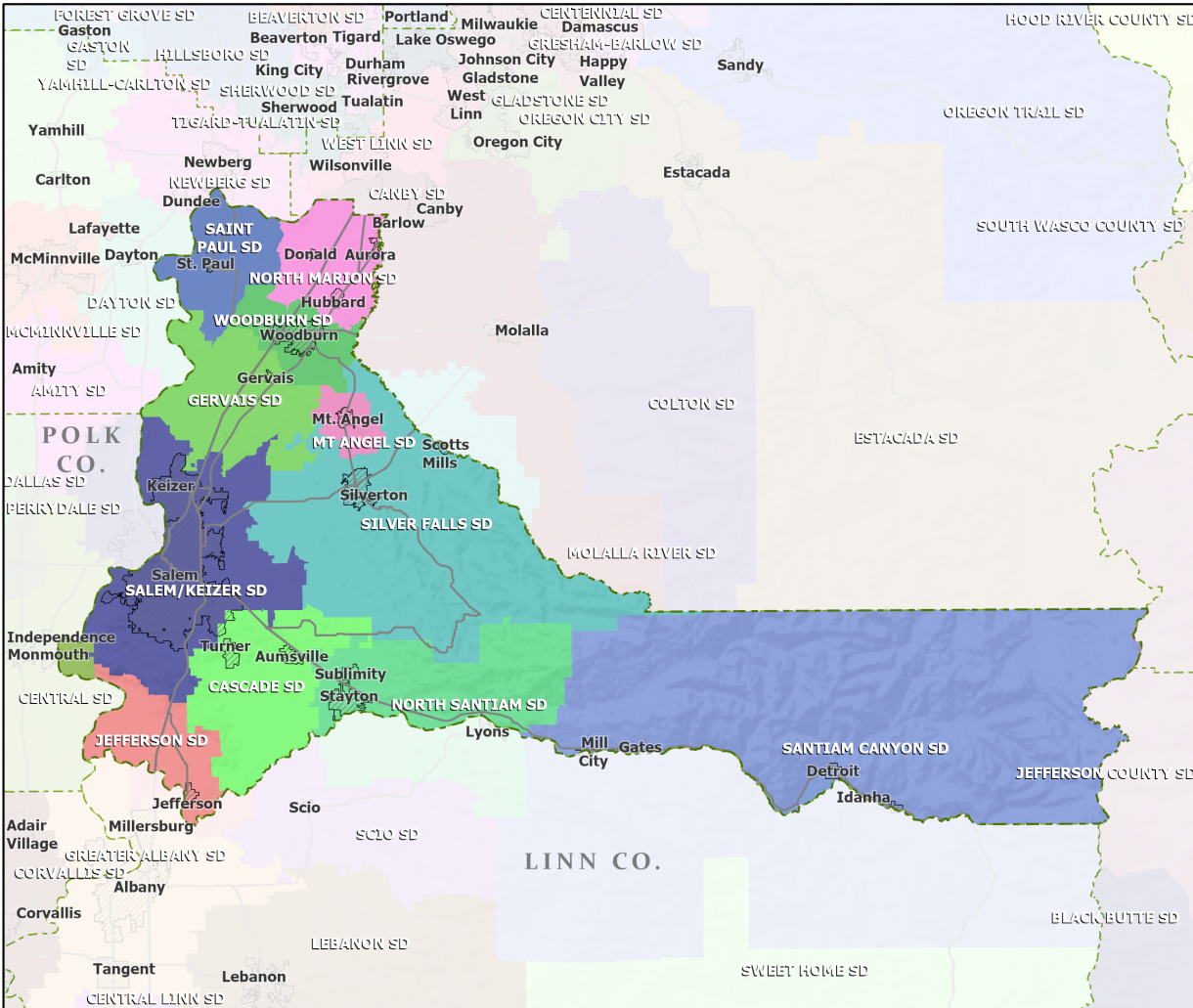
Continued from previous slide




Sector	Oregon	County Total	St. Paul CCD	Salem CCD	Silverton CCD	Stayton CCD	Wood-burn CCD
Total, All Jobs*	1,904,601	157,051	1,291	121,943	5,137	5,029	12,877
Goods-Producing	18.6%	19.7%	77.7%	14.5%	32.3%	39.8%	26.0%
Natural Resources and Mining	2.7%	5.3%	70.5%	3.0%	7.2%	5.3%	7.4%
Construction	5.9%	7.4%	5.0%	6.3%	12.8%	11.9%	7.0%
Manufacturing	10.0%	6.9%	2.2%	5.2%	12.4%	22.5%	11.6%
Service Providing	81.4%	80.3%	22.3%	85.5%	67.7%	60.2%	74.0%
Trade, Transportation, and Utilities	18.6%	16.9%	5.1%	15.2%	11.4%	16.9%	34.9%
Information	2.0%	1.1%	0.6%	1.2%	1.3%	1.0%	1.1%
Financial Activities	4.6%	4.2%	1.3%	4.8%	2.2%	3.1%	1.7%
Professional and Business Services	13.4%	10.0%	2.1%	11.5%	4.5%	2.2%	3.9%
Education and Health Services	23.1%	23.2%	5.5%	24.7%	28.6%	22.3%	16.6%
Leisure and Hospitality	11.4%	8.4%	2.0%	8.7%	12.5%	8.1%	8.0%
Other Services	4.2%	3.9%	4.5%	3.8%	6.1%	4.9%	2.5%
Public Administration	4.2%	12.7%	1.2%	15.6%	1.1%	1.8%	5.2%

Source: U.S. Census Bureau, LEHD Origin-Destination Employment Statistics, 2018 Q2

* Jobs covered by unemployment insurance and federal workers.

School Districts: Marion County



 Counties
 Incorporated Cities
 Highways

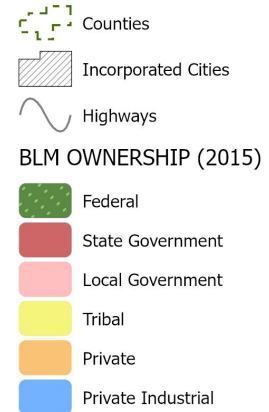
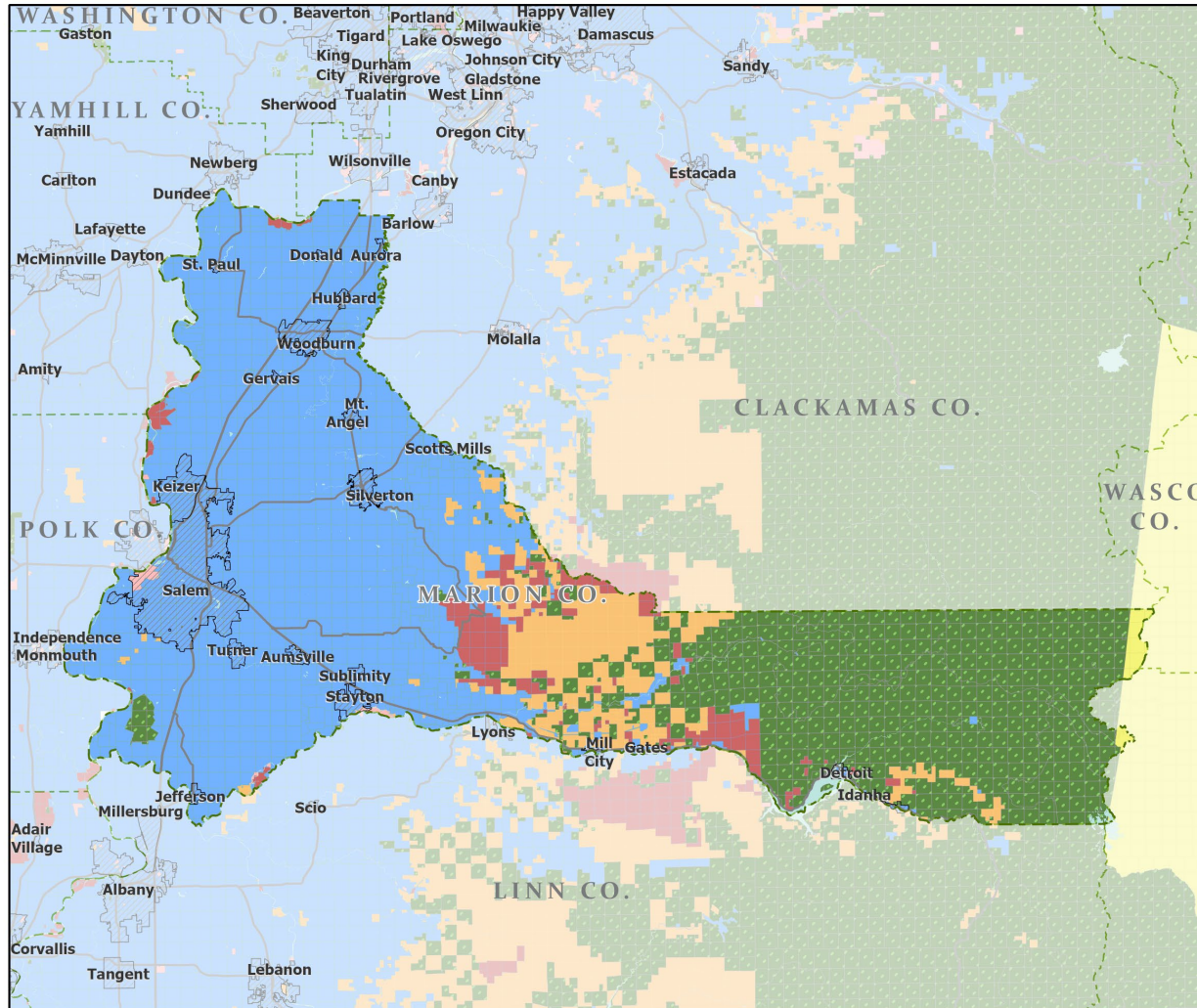


Portland State University,
Population Research Center,
May 2021.
www.pdx.edu/prc

Sources: Esri, USGS, NOAA
State of Oregon GEO;
Oregon Dept. of
Transportation.

A horizontal scale bar with a black background and white markings. It is labeled '0' at the left end and '50' at the right end. The word 'Miles' is written in black text to the right of the bar. The bar is divided into five equal segments by white vertical lines.

Land Ownership: Marion County



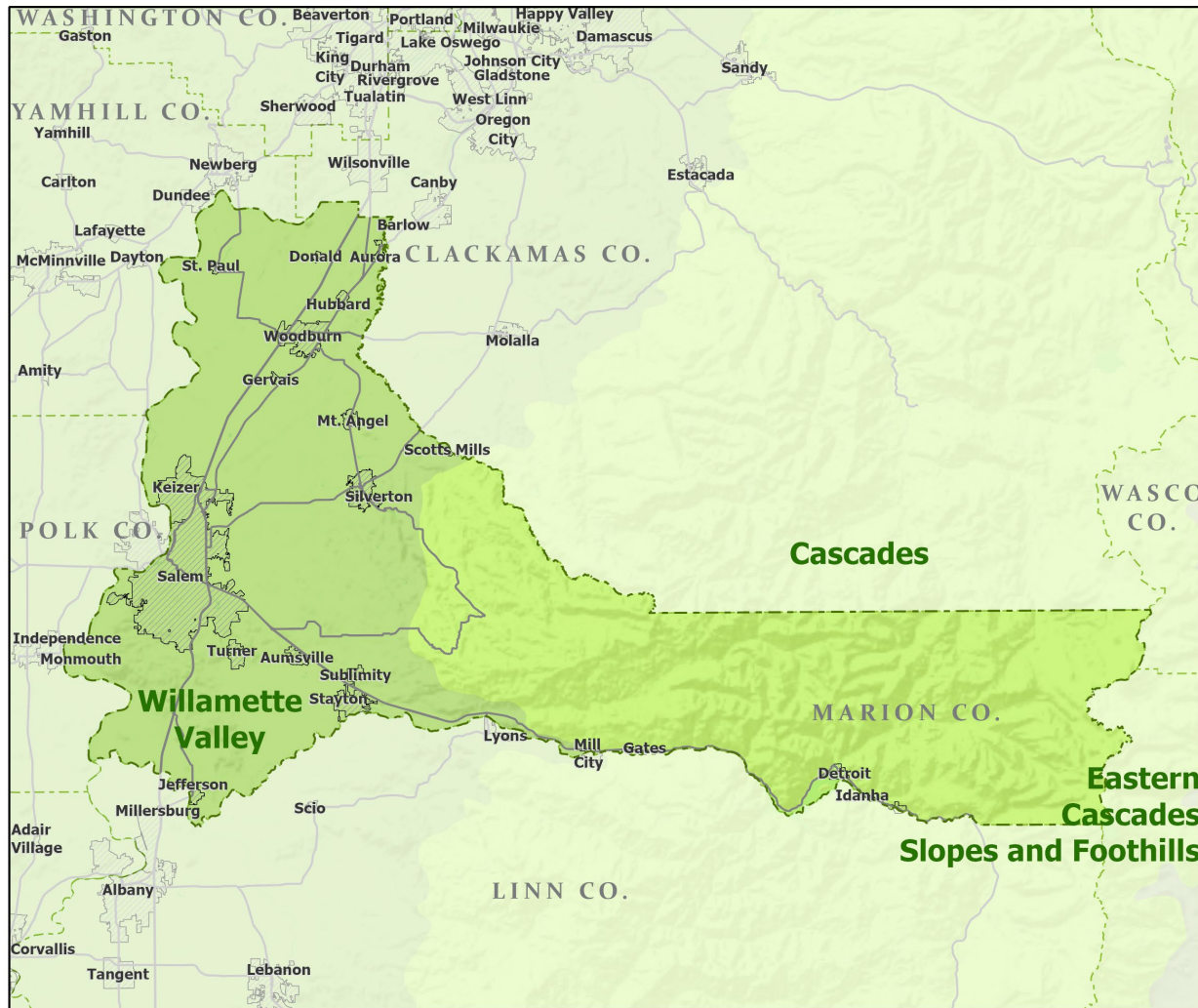
Portland State University,
Population Research Center,
May 2021.
www.pdx.edu/prc

Sources: Esri, USGS, NOAA

State of Oregon GEO;
Oregon Dept. of
Transportation; Bureau of
Land management.



Ecoregions: Marion County



- Counties
- Incorporated Cities
- Highways
- LEVEL III ECOREGIONS OF OREGON (2006)
 - Cascades
 - Eastern Cascades Slopes and Foothills
 - Willamette Valley

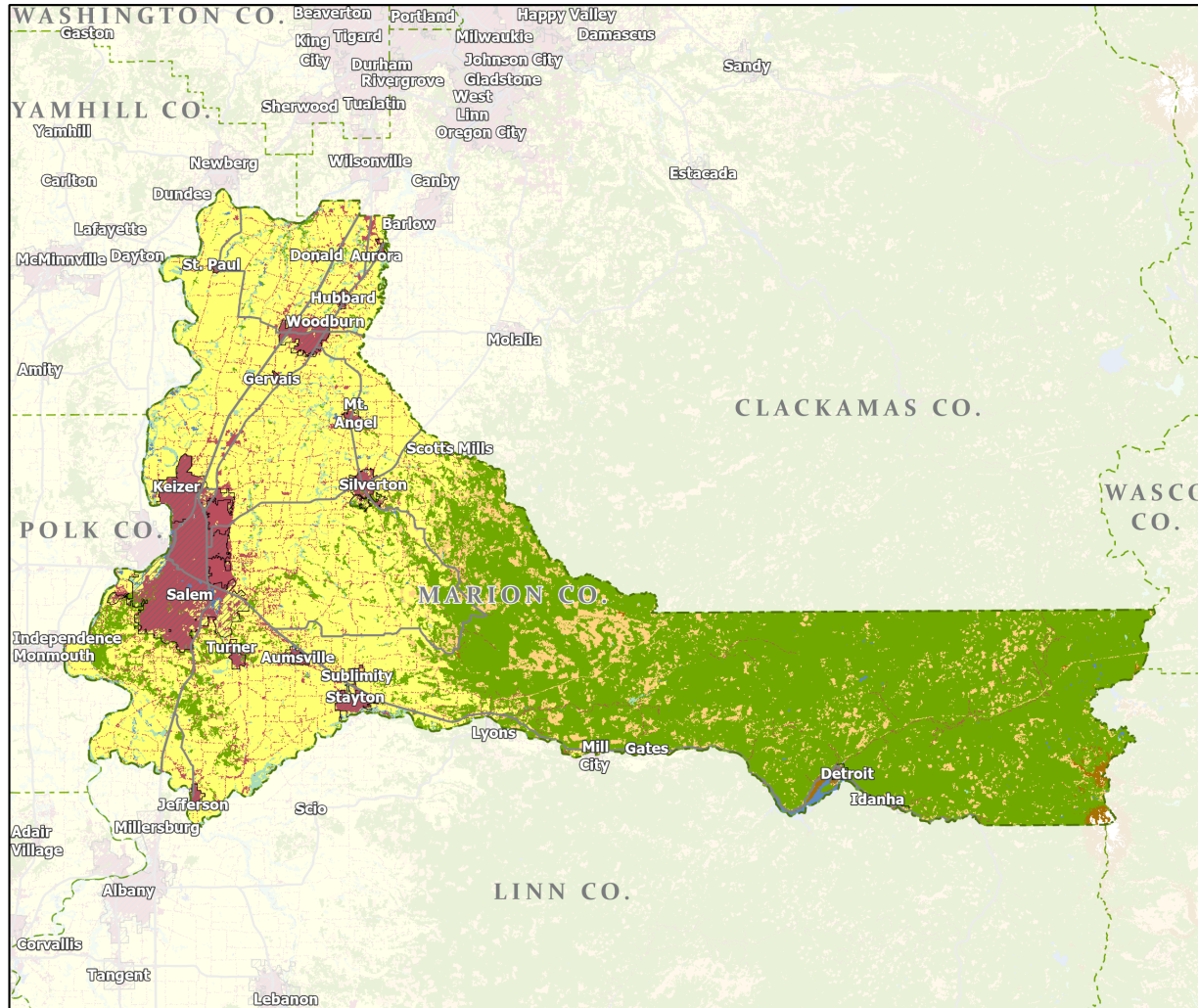


Portland State University,
Population Research Center,
May 2021.
www.pdx.edu/prc

Sources: Esri, USGS, NOAA
State of Oregon GEO;
Oregon Dept. of
Transportation.

0 50 Miles

Land Cover: Marion County



- Counties
- Incorporated Cities
- Highways

NATIONAL LAND COVER

- Developed
- Cultivated Crops/Pasture/Hay
- Barren Land
- Forest
- Grasslands/Scrub/Sedge
- Lichens/Moss
- Wetlands
- Perennial Snow/Ice
- Open Water



Portland State University,
Population Research Center,
May 2021.
www.pdx.edu/prc

Sources: Esri, USGS, NOAA
State of Oregon GEO;
Oregon Dept. of
Transportation.