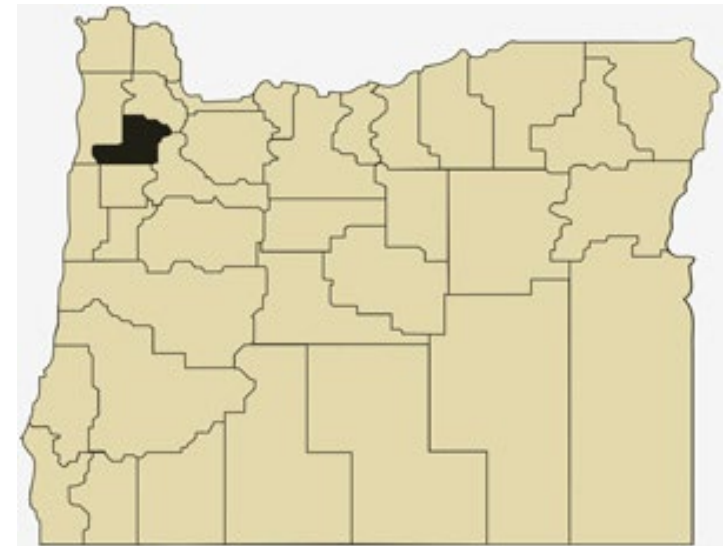


Yamhill County Overview

House and Senate Committees on Redistricting

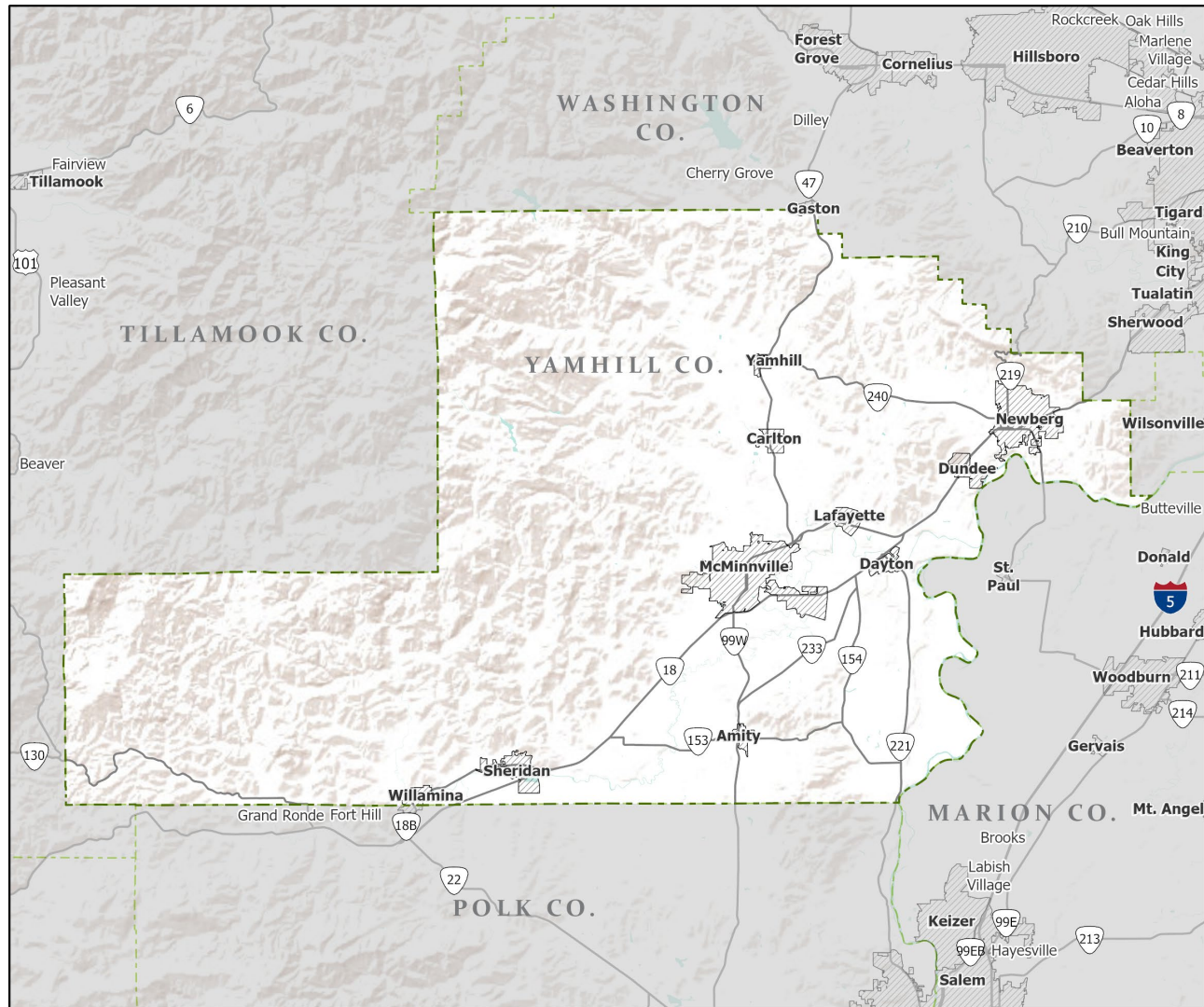
June 15, 2021

July 1, 2020 population estimate	108,605
Population rank	10th
Share of state population	2.5%
Density (per square mile)	151.3
Density rank	5th
Area (square miles)	718
Area rank	32nd
Share of state area	0.7%



Sources: PSU Population Research Center; Oregon Blue Book.

Highways: Yamhill County



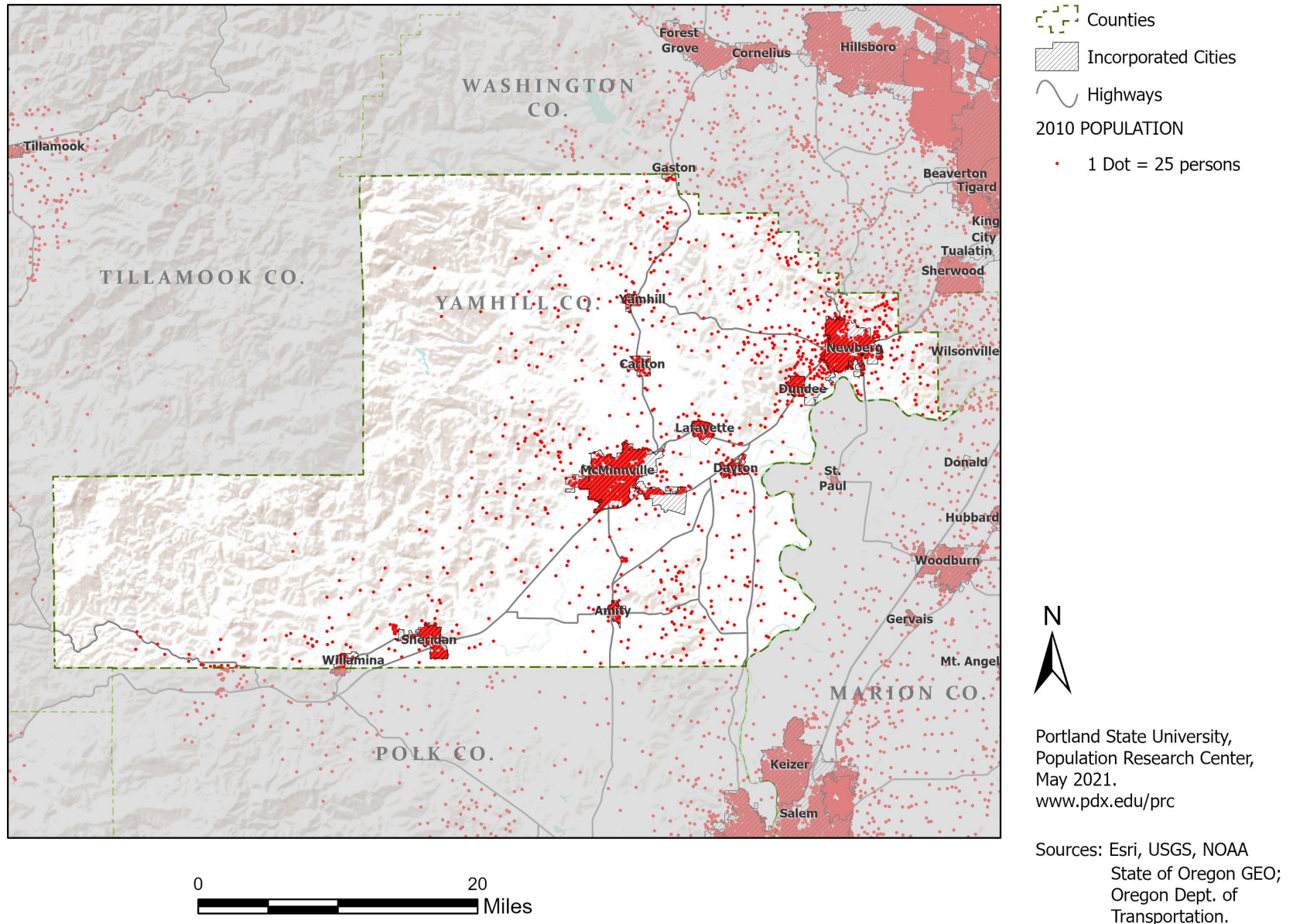
- Counties
- Incorporated Cities
- Highways



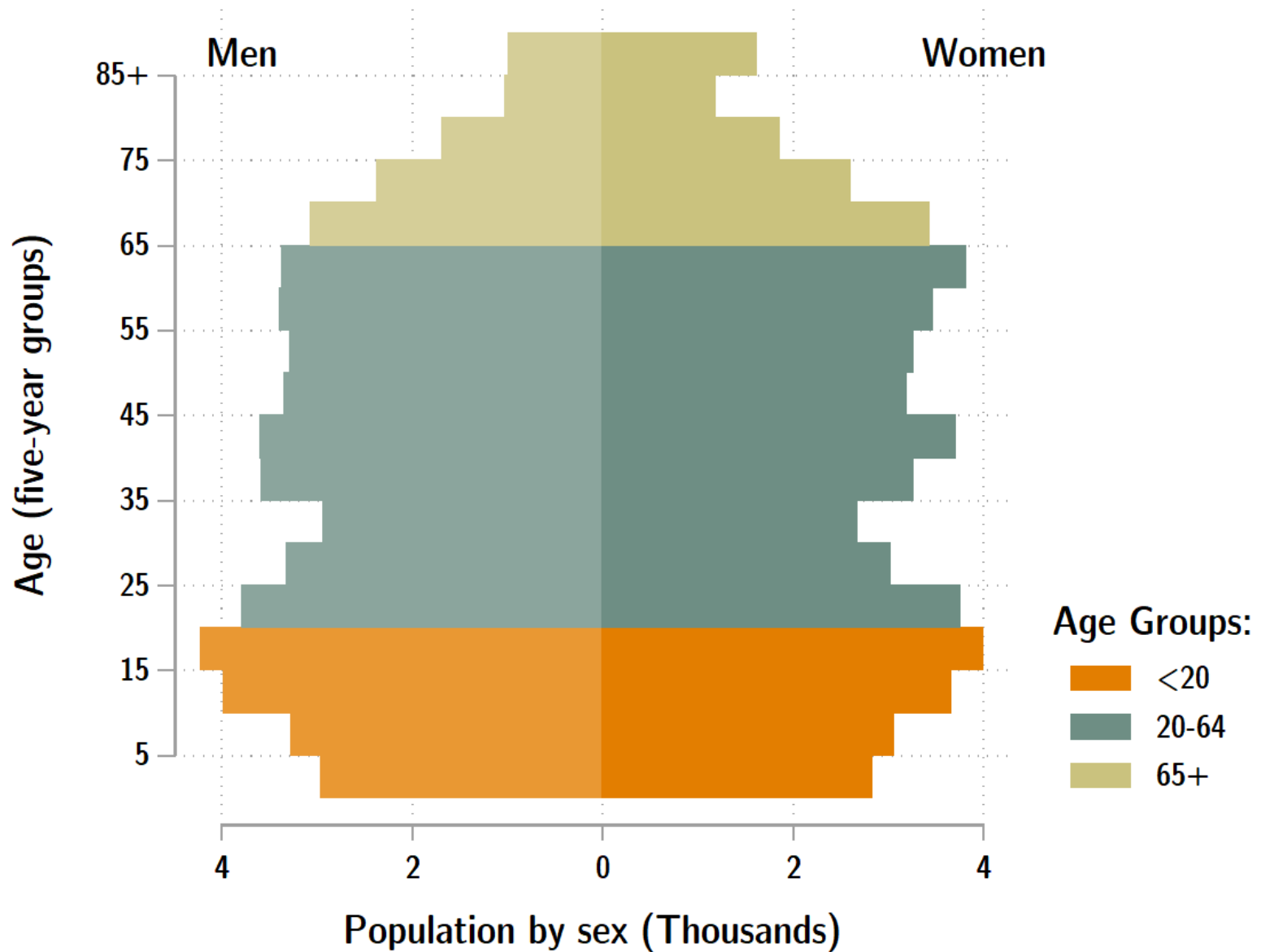
Portland State University,
Population Research Center,
May 2021.
www.pdx.edu/prc

Sources: Esri, USGS, NOAA
State of Oregon GEO;
Oregon Dept. of
Transportation.

Population: Yamhill County



Yamhill population by age & sex: 2020



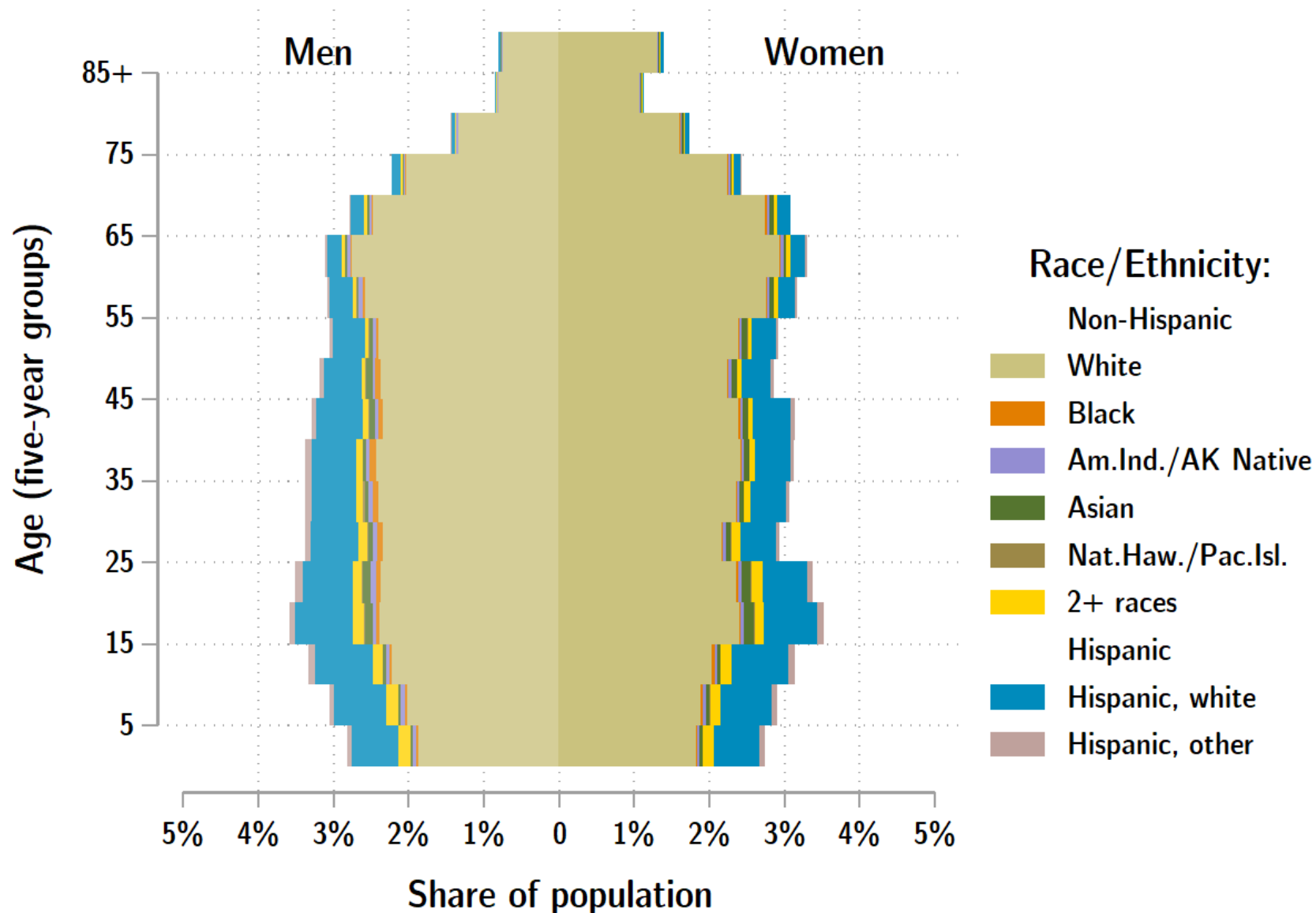
Source: Estimates by Population Research Center, PSU

Age Distribution, Yamhill County

Age Group	2020 Estimate	2020 Percent of Total	Oregon 2020 Percent of Total
Total population	108,605	100.0%	100.0%
Under age 5	5,792	5.3%	5.4%
Age 5 to 17	18,619	17.1%	14.9%
Age 18 to 64	64,363	59.3%	61.1%
Age 65 and over	19,831	18.3%	18.6%

Source: PSU Population Research Center July 1, 2020 Population Estimates

Yamhill County population by age & sex: 2019



Source: Estimates by US Census Bureau

Race and Ethnicity, Yamhill County

	2010 Census	2010 Census Percent	2015-19 ACS Estimate	2015-19 ACS Percent	Oregon 2015-19 ACS Percent
HISPANIC OR LATINO AND RACE					
Total population	99,193	100.0%	104,831	100.0%	100.0%
Hispanic or Latino	14,592	14.7%	16,639	15.9%*	13.0%
Not Hispanic or Latino	84,601	85.3%	88,192	84.1%*	87.0%
White alone	78,448	79.1%	80,959	77.2%*	75.7%
Black or African American alone	784	0.8%	853	0.8%	1.8%
American Indian and Alaska Native alone	1,272	1.3%	1,055	1.0%*	0.9%
Asian alone	1,418	1.4%	1,495	1.4%	4.3%
Native Hawaiian and Other Pacific Islander alone	163	0.2%	262	0.2%	0.4%
Some Other Race alone	143	0.1%	60	0.1%	0.1%
Two or More Races	2,373	2.4%	3,508	3.3%*	3.7%

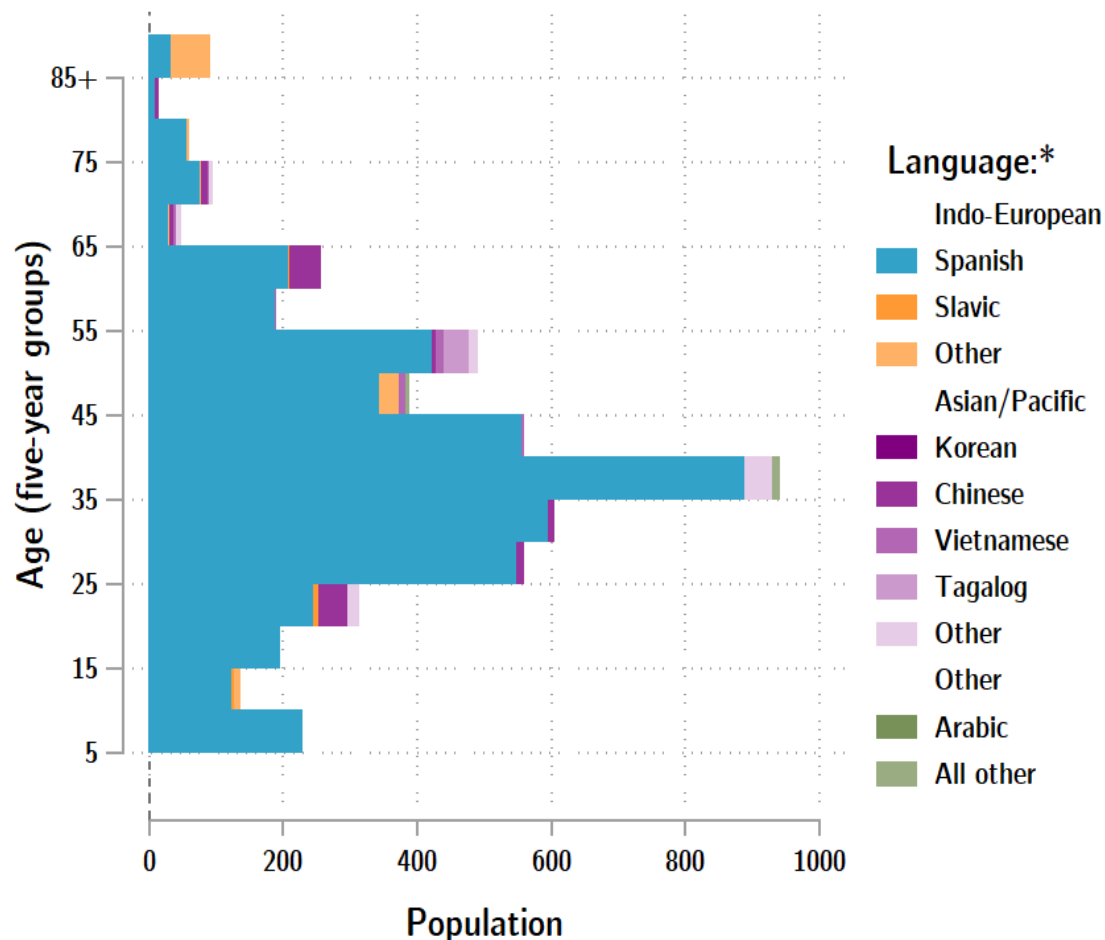
	2010 Census	2010 Census Percent	2015-19 ACS Estimate	2015-19 ACS Percent	Oregon 2015-19 ACS Percent
RACE ALONE OR IN COMBINATION WITH ONE OR MORE OTHER RACES**					
White	87,781	88.5%	95,799	91.4%*	88.8%
Black or African American	1,344	1.4%	1,641	1.6%*	2.9%
American Indian and Alaska Native	2,909	2.9%	2,895	2.8%*	3.1%
Asian	2,362	2.4%	3,040	2.9%*	6.0%
Native Hawaiian and Other Pacific Islander	437	0.4%	614	0.6%	0.8%
Some Other Race	7,875	7.9%	5,437	5.2%*	3.6%

Source: U.S. Census Bureau, 2010 Census and 2019 5-year American Community Survey estimates.

* Difference between 2010 Census and 2015-19 ACS is statistically significant at the 90% confidence level.

** Total may add to more than 100% due to persons identifying as more than one race.

Yamhill County population by age & language: 2019



Language Spoken at Home Speak English less than "very well" Yamhill County

Languages	Estimate
Total Population Age 5 and Older	98,880
Speaking English less than "very well"	5,213
Spanish	4,735
Russian, Polish, or other Slavic languages	31
Other Indo-European languages	120
Korean	0
Chinese (incl. Cantonese and Mandarin)	139
Vietnamese	31
Tagalog (incl. Filipino)	42
Other Asian and Pacific Island languages	87
Arabic	0
Other languages	28

Source: U.S. Census Bureau American Community Survey 2019 5-year estimates, Table C16001.

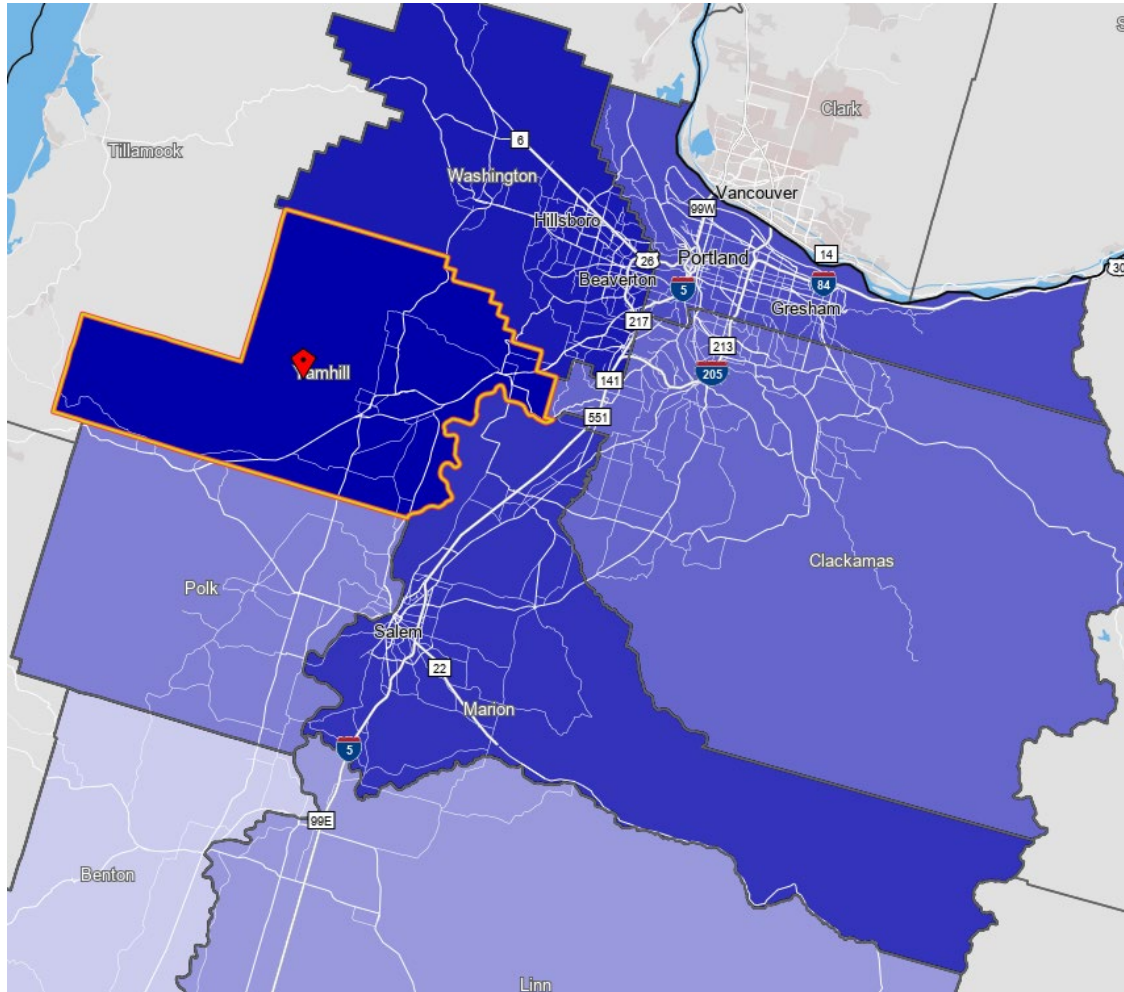
Note: * Languages for persons who speak English less than very well.

Source: ACS tables B16004, C16001, PUMS; PEP estimates; Analysis by PRC, PSU

[Link to Table C16001](#) for all counties, including margins of error.

[Visualization](#) of language data by census tract within county.

Yamhill County Commute Flows

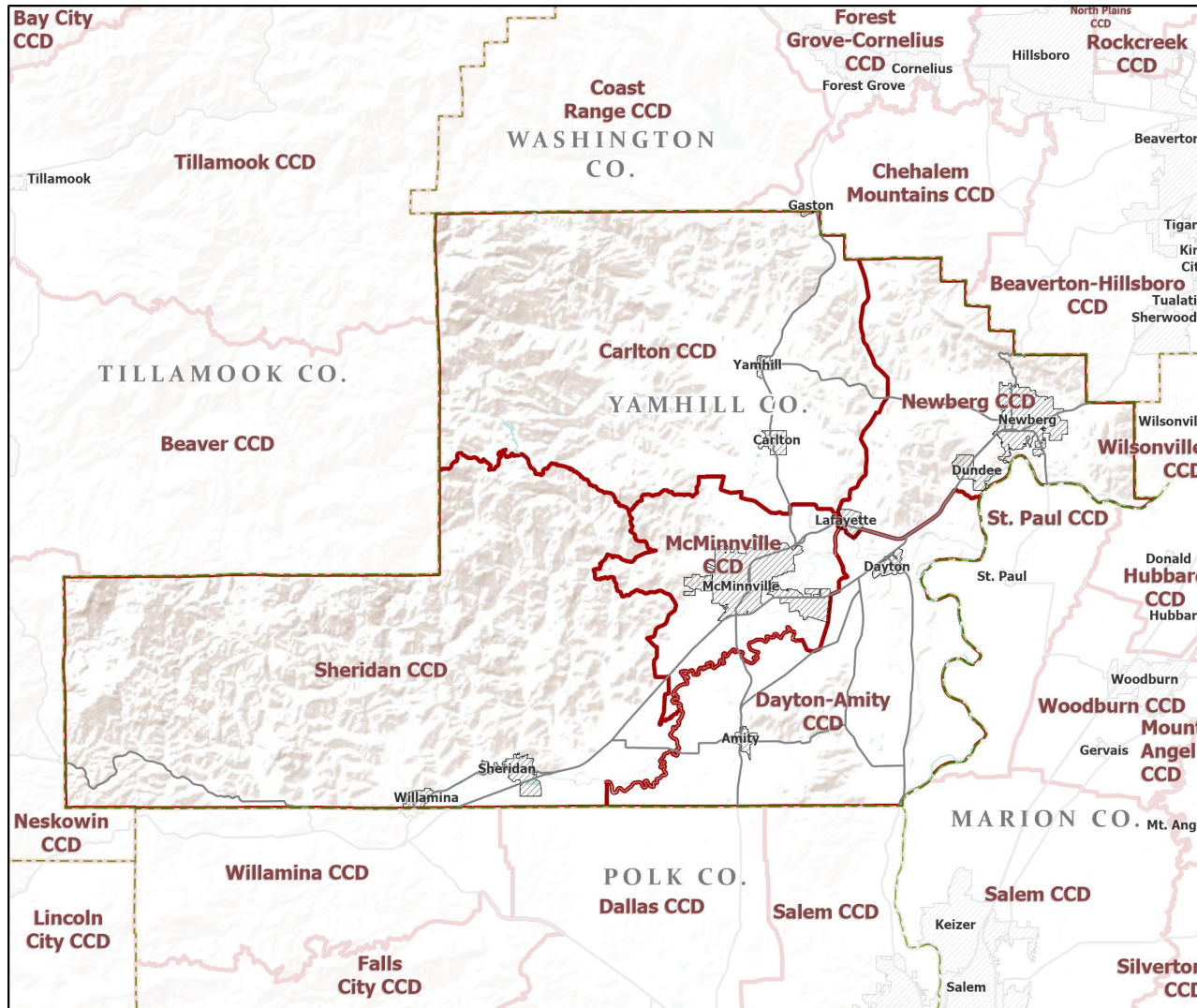


Explore sub-county commute flows in [this interactive map](#).

Jobs Counts by Counties Where Workers are Employed - All Jobs

	2018	
	Count	Share
All Counties	46,681	100.0%
Yamhill County, OR	19,977	42.8%
Washington County, OR	9,852	21.1%
Marion County, OR	4,154	8.9%
Multnomah County, OR	4,026	8.6%
Clackamas County, OR	2,884	6.2%
Polk County, OR	1,433	3.1%
Linn County, OR	684	1.5%
Lane County, OR	676	1.4%
Benton County, OR	422	0.9%
Deschutes County, OR	279	0.6%
All Other Locations	2,294	4.9%

County Subdivisions (CCDs): Yamhill County



- Counties
- Incorporated Cities
- Highways
- County Subdivisions (CCDs)



Portland State University,
Population Research Center,
May 2021.
www.pdx.edu/prc

Sources: Esri, USGS, NOAA
State of Oregon GEO;
Oregon Dept. of
Transportation.

0 20 Miles

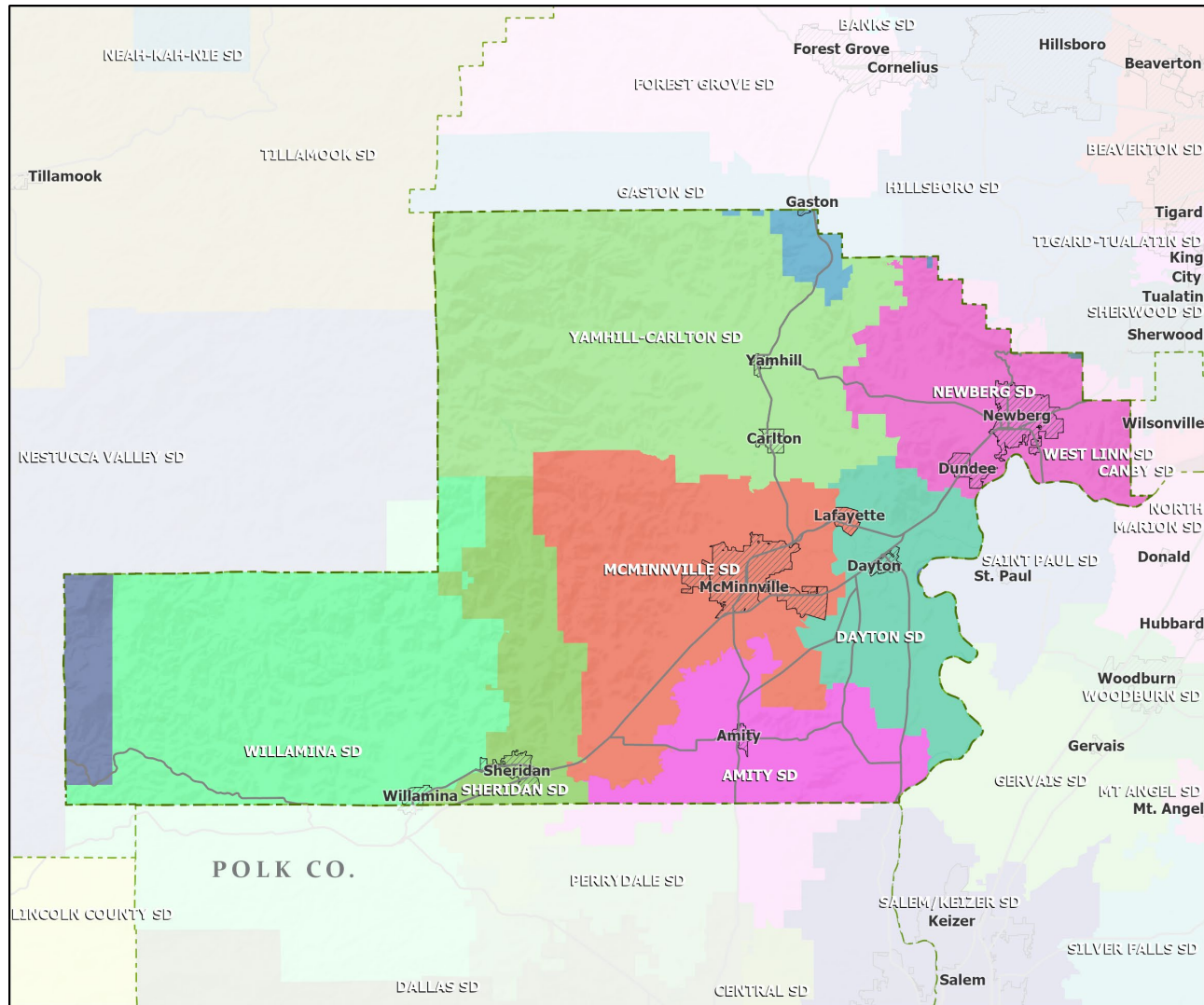
Yamhill County Employment by Sector by Census County Division

Sector	Oregon	County Total	Carlton CCD	Dayton-Amity CCD	McMinnville CCD	Newberg CCD	Sheridan CCD
Total, All Jobs*	1,904,601	35,783	2,163	2,831	16,709	12,146	1,934
Goods-Producing	18.6%	34.9%	66.5%	70.6%	25.0%	34.3%	36.0%
Natural Resources and Mining	2.7%	9.8%	33.3%	52.2%	5.4%	2.5%	6.2%
Construction	5.9%	6.3%	12.5%	8.7%	4.6%	7.5%	3.2%
Manufacturing	10.0%	18.8%	20.7%	9.7%	15.1%	24.4%	26.7%
Service Providing	81.4%	65.1%	33.5%	29.4%	75.0%	65.7%	64.0%
Trade, Transportation, and Utilities	18.6%	13.5%	12.2%	4.8%	15.6%	13.5%	8.9%
Information	2.0%	0.8%	0.1%	0.2%	1.0%	0.9%	0.6%
Financial Activities	4.6%	2.7%	1.1%	0.6%	3.4%	2.9%	0.6%
Professional and Business Services	13.4%	5.5%	3.0%	2.9%	6.7%	5.3%	3.3%
Education and Health Services	23.1%	24.5%	7.7%	14.7%	27.8%	24.5%	29.1%
Leisure and Hospitality	11.4%	10.0%	4.6%	2.6%	10.7%	12.5%	5.8%
Other Services	4.2%	4.1%	3.4%	2.6%	4.1%	4.9%	3.0%
Public Administration	4.2%	3.9%	1.4%	1.1%	5.8%	1.2%	12.6%

Source: U.S. Census Bureau, LEHD Origin-Destination Employment Statistics, 2018 Q2

* Jobs covered by unemployment insurance and federal workers.

School Districts: Yamhill County



- Counties
- Incorporated Cities
- Highways

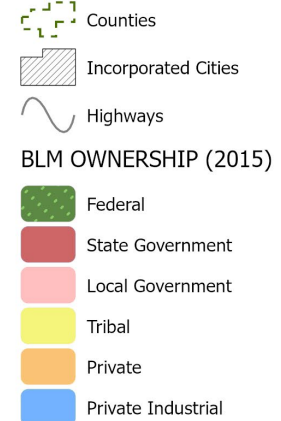
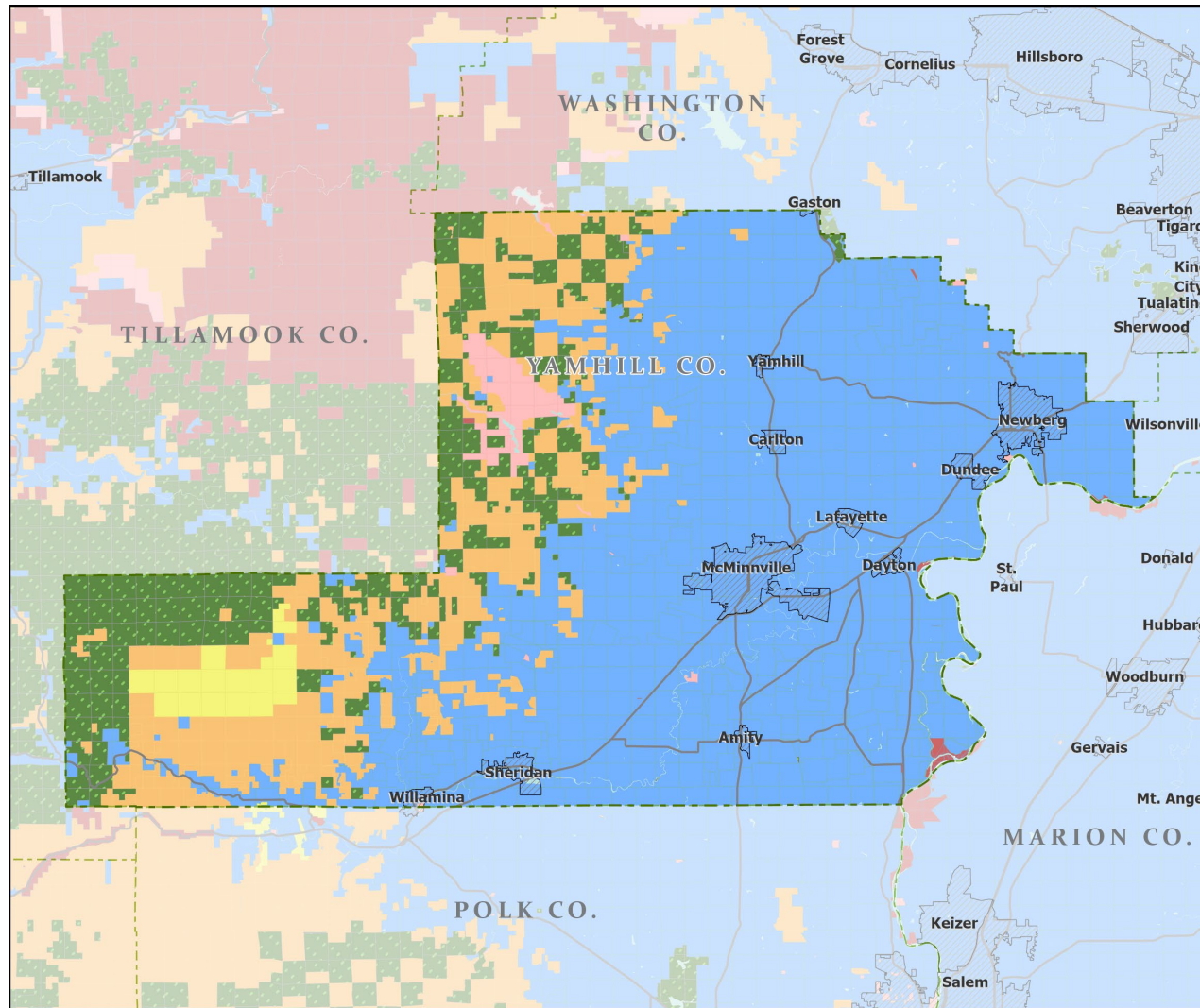


Portland State University,
Population Research Center,
May 2021.
www.pdx.edu/prc

Sources: Esri, USGS, NOAA
State of Oregon GEO;
Oregon Dept. of
Transportation.

0 20 Miles

Land Ownership: Yamhill County

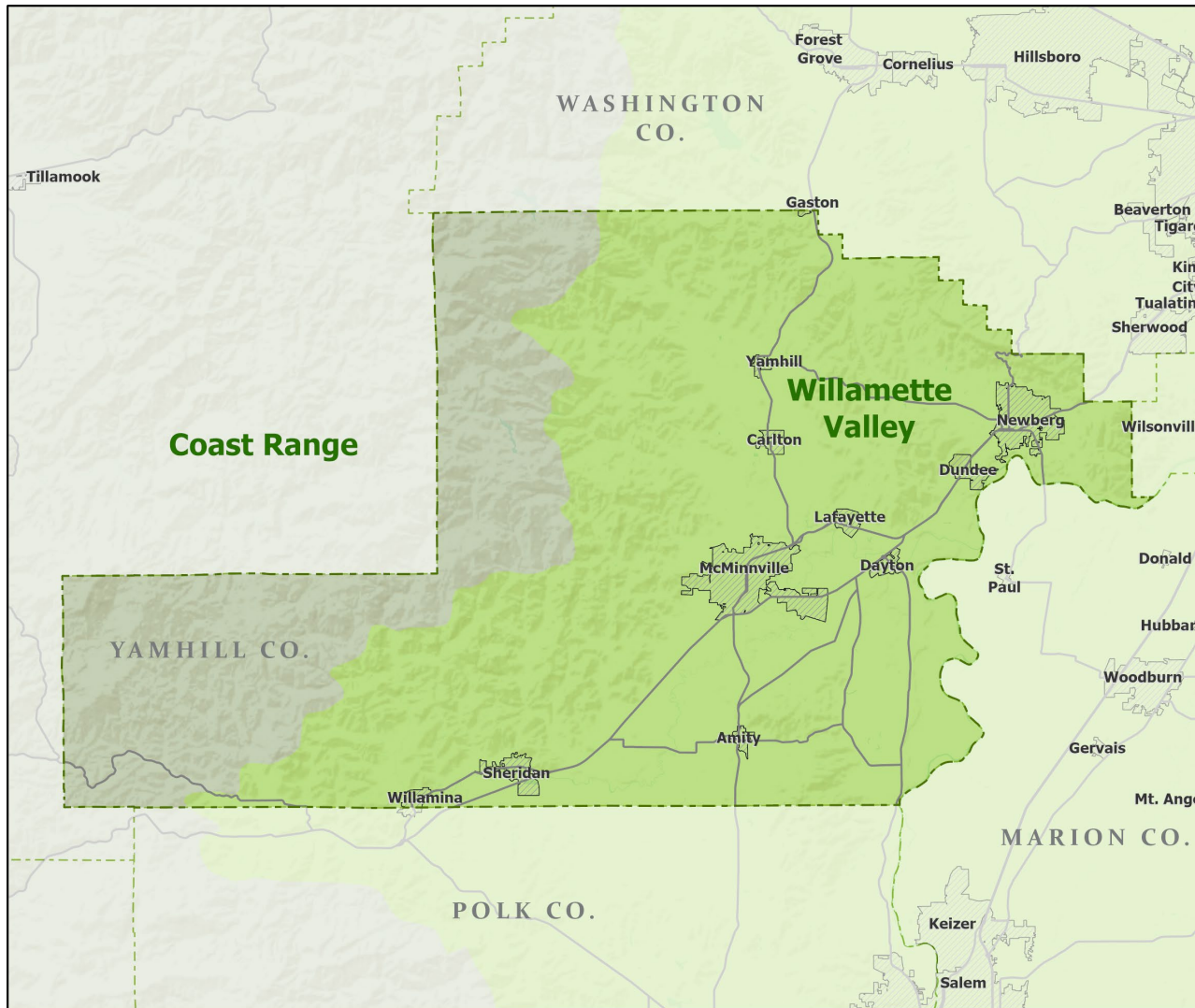


Portland State University,
Population Research Center,
May 2021.
www.pdx.edu/prc

Sources: Esri, USGS, NOAA

State of Oregon GEO;
Oregon Dept. of
Transportation; Bureau of
Land management.

Ecoregions: Yamhill County



- Counties
- Incorporated Cities
- Highways
- LEVEL III ECOREGIONS OF OREGON (2006)
 - Coast Range
 - Willamette Valley

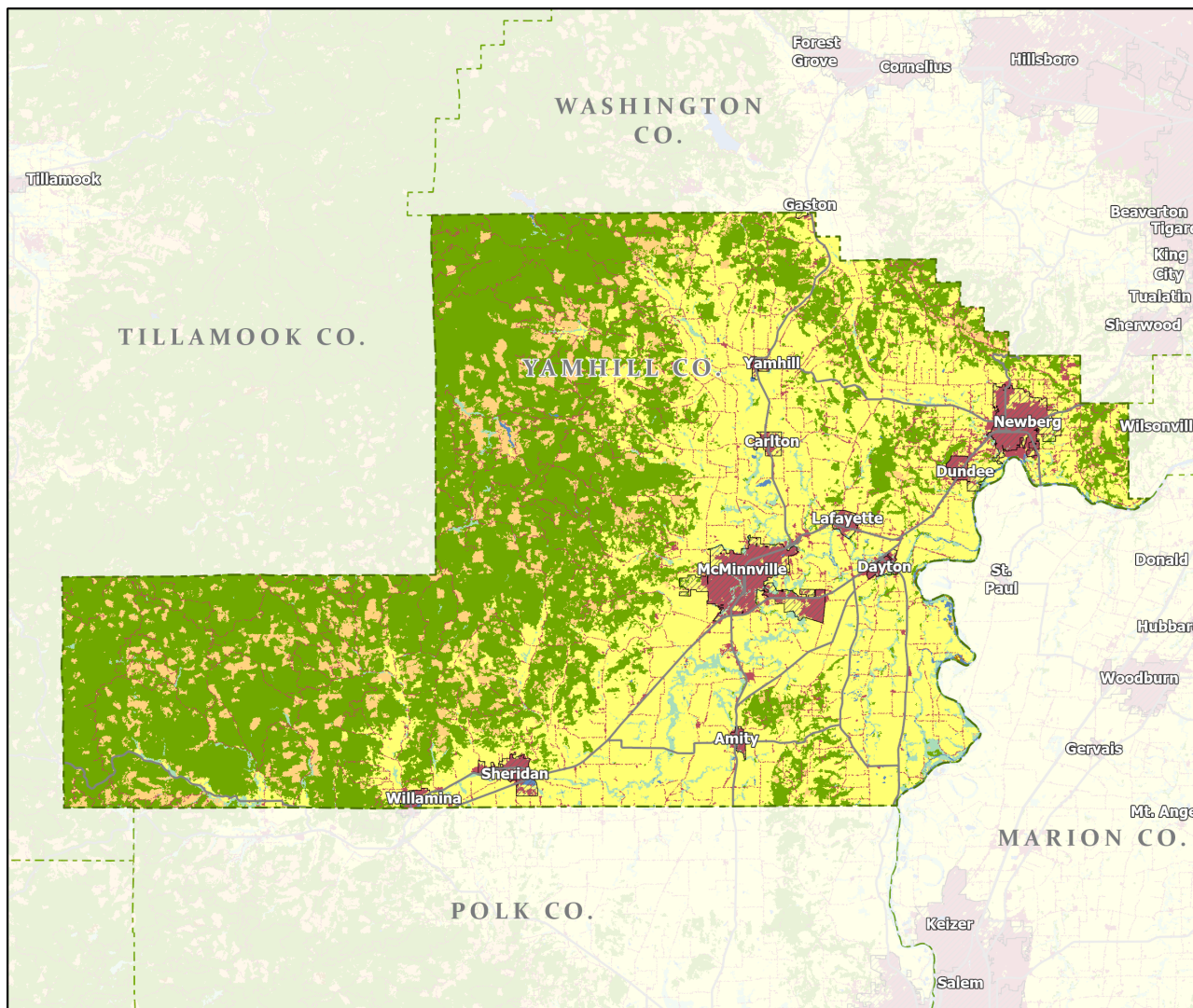


Portland State University,
Population Research Center,
May 2021.
www.pdx.edu/prc

Sources: Esri, USGS, NOAA
State of Oregon GEO;
Oregon Dept. of
Transportation.

0 20 Miles

Land Cover: Yamhill County



Counties

Incorporated Cities

Highways

NATIONAL LAND COVER

- Developed
- Cultivated Crops/Pasture/Hay
- Barren Land
- Forest
- Grasslands/Scrub/Sedge
- Lichens/Moss
- Wetlands
- Perennial Snow/Ice
- Open Water



Portland State University,
Population Research Center,
May 2021.
www.pdx.edu/prc

Sources: Esri, USGS, NOAA
State of Oregon GEO;
Oregon Dept. of
Transportation.