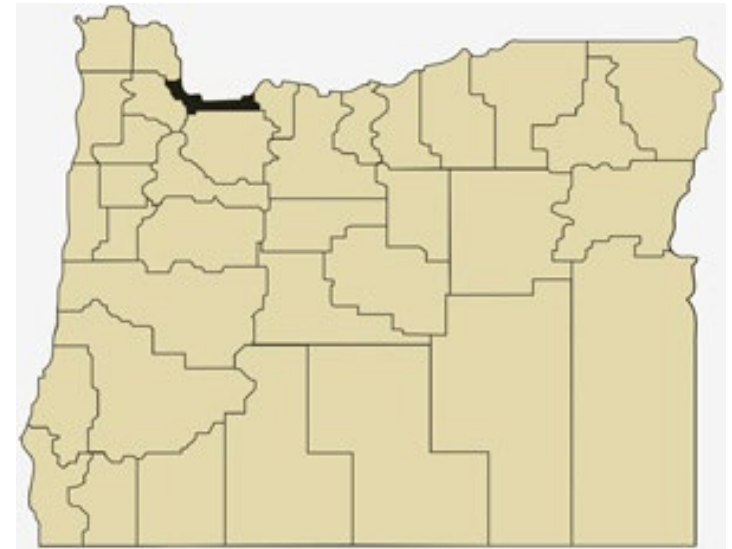


# Multnomah County Overview

## House and Senate Committees on Redistricting

June 15, 2021

July 1, 2020 population estimate	829,560
Population rank	1st
Share of state population	19.4%
Density (per square mile)	1,784.0
Density rank	1st
Area (square miles)	465
Area rank	36th
Share of state area	0.5%



Sources: PSU Population Research Center; Oregon Blue Book.

# Highways: Multnomah County



- Counties
- Incorporated Cities
- Highways

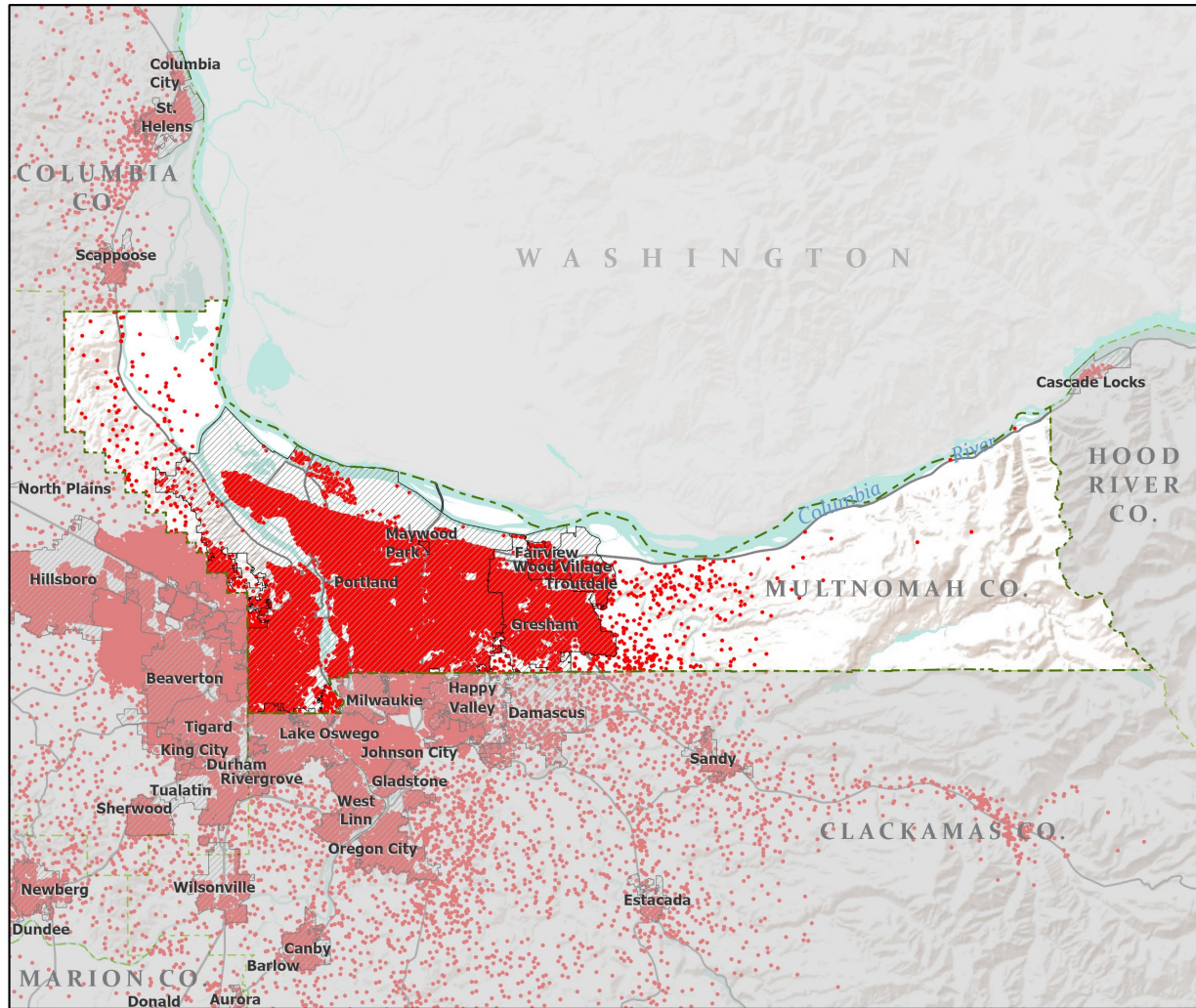


Portland State University,  
Population Research Center,  
May 2021.  
[www.pdx.edu/prc](http://www.pdx.edu/prc)

Sources: Esri, USGS, NOAA  
State of Oregon GEO;  
Oregon Dept. of  
Transportation.

0 40 Miles

# Population: Multnomah County



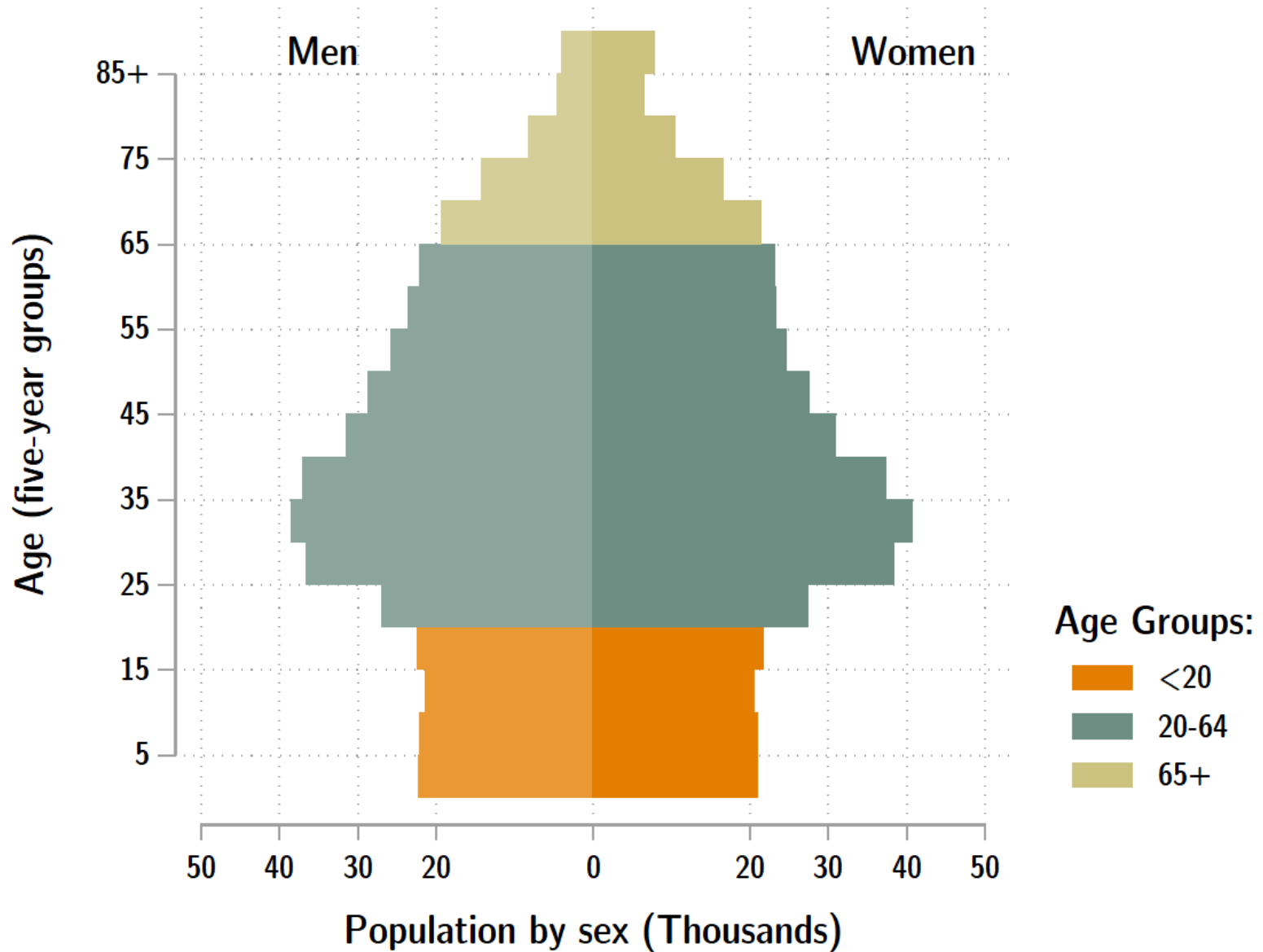
- Counties
- Incorporated Cities
- Highways
- 2010 POPULATION
  - 1 Dot = 25 persons



Portland State University,  
Population Research Center,  
May 2021.  
[www.pdx.edu/prc](http://www.pdx.edu/prc)

Sources: Esri, USGS, NOAA  
State of Oregon GEO;  
Oregon Dept. of  
Transportation.

# Multnomah population by age & sex: 2020



Source: Estimates by Population Research Center, PSU

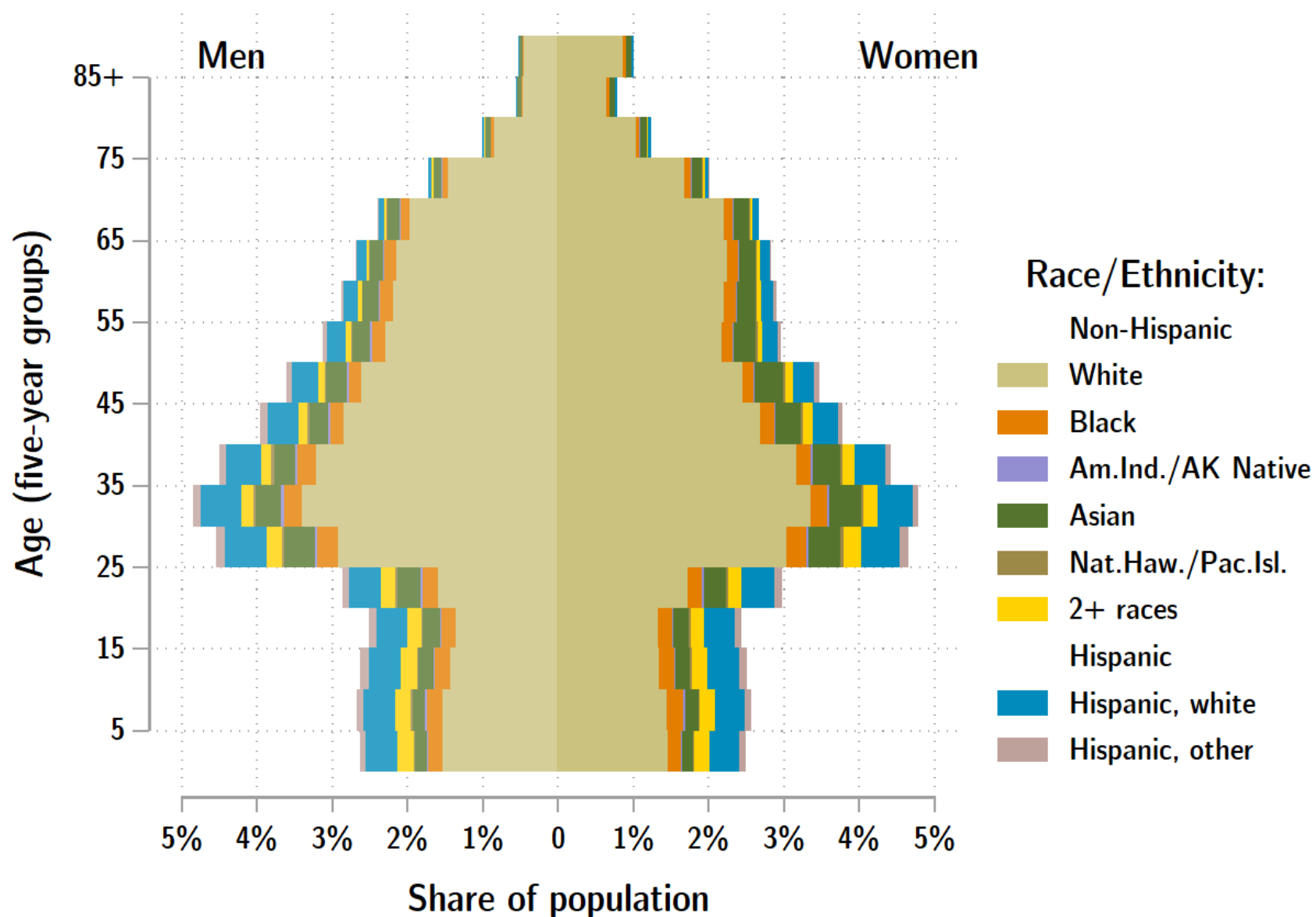
# Age Distribution, Multnomah County

Age Group	2020 Estimate	2020 Percent of Total	Oregon 2020 Percent of Total
Total population	829,560	100.0%	100.0%
Under age 5	43,302	5.2%	5.4%
Age 5 to 17	109,760	13.2%	14.9%
Age 18 to 64	563,399	67.9%	61.1%
Age 65 and over	113,099	13.6%	18.6%

Source: PSU Population Research Center July 1, 2020 Population Estimates



# Multnomah County population by age & sex: 2019



Source: Estimates by US Census Bureau

# Race and Ethnicity, Multnomah County

	2010 Census	2010 Census Percent	2015-19 ACS Estimate	2015-19 ACS Percent	Oregon 2015-19 ACS Percent
<b>HISPANIC OR LATINO AND RACE</b>					
Total population	735,334	100.0%	804,606	100.0%	100.0%
Hispanic or Latino	80,138	10.9%	93,276	11.6%*	13.0%
Not Hispanic or Latino	655,196	89.1%	711,330	88.4%*	87.0%
White alone	530,303	72.1%	560,762	69.7%*	75.7%
Black or African American alone	39,919	5.4%	42,693	5.3%*	1.8%
American Indian and Alaska Native alone	5,527	0.8%	5,525	0.7%	0.9%
Asian alone	47,508	6.5%	59,127	7.3%*	4.3%
Native Hawaiian and Other Pacific Islander alone	3,870	0.5%	4,909	0.6%	0.4%
Some Other Race alone	1,520	0.2%	1,902	0.2%	0.1%
Two or More Races	26,549	3.6%	36,412	4.5%*	3.7%

	2010 Census	2010 Census Percent	2015-19 ACS Estimate	2015-19 ACS Percent	Oregon 2015-19 ACS Percent
<b>RACE ALONE OR IN COMBINATION WITH ONE OR MORE OTHER RACES**</b>					
White	592,276	80.5%	667,060	82.9%*	88.8%
Black or African American	52,090	7.1%	58,467	7.3%*	2.9%
American Indian and Alaska Native	18,041	2.5%	19,005	2.4%	3.1%
Asian	60,147	8.2%	77,331	9.6%*	6.0%
Native Hawaiian and Other Pacific Islander	6,797	0.9%	8,718	1.1%*	0.8%
Some Other Race	43,450	5.9%	21,817	2.7%*	3.6%

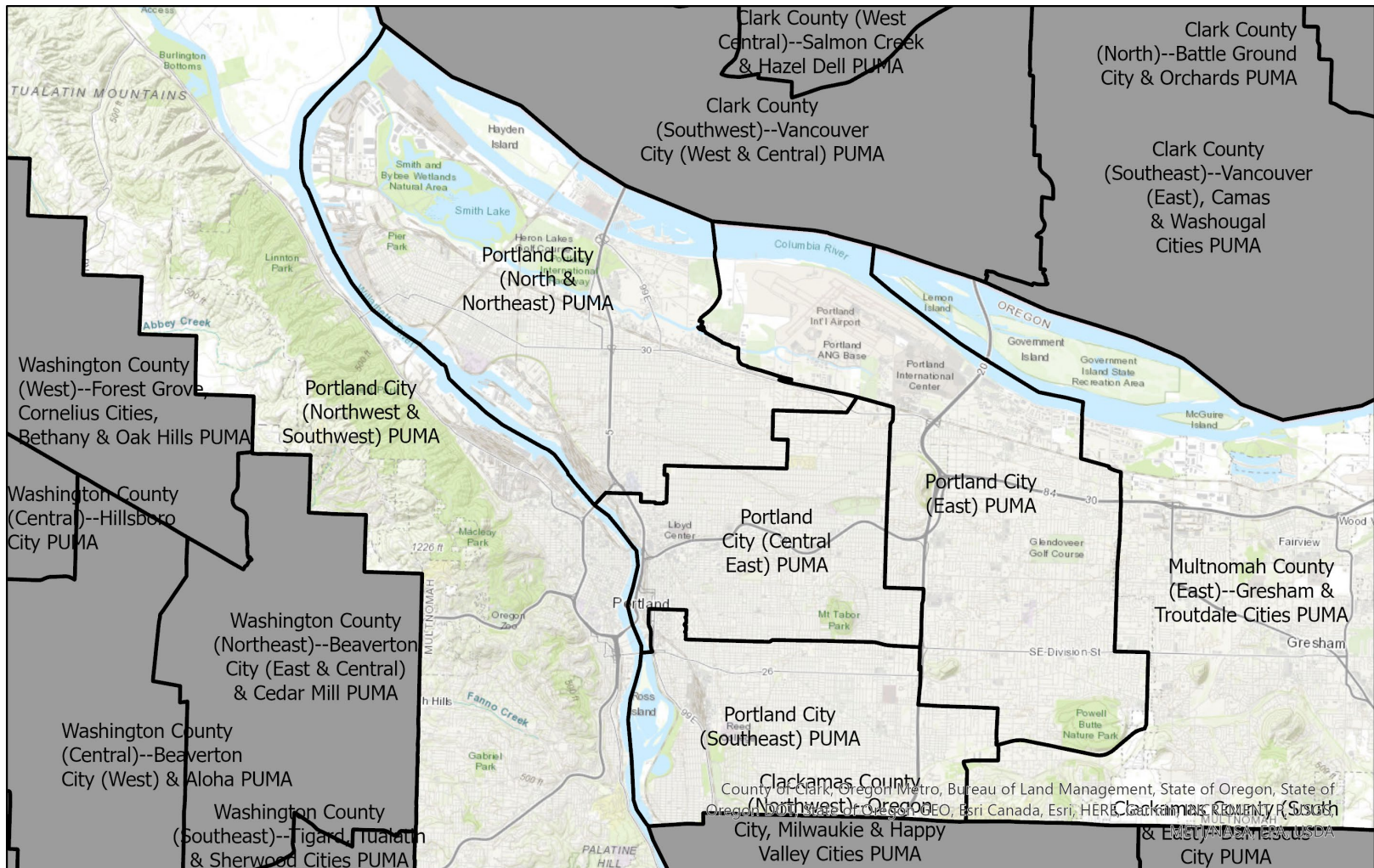
Source: U.S. Census Bureau, 2010 Census and 2019 5-year American Community Survey estimates.

\* Difference between 2010 Census and 2015-19 ACS is statistically significant at the 90% confidence level.

\*\* Total may add to more than 100% due to persons identifying as more than one race.

# Multnomah County Public Use Microdata Areas

(Groups of census tracts with 100,000 population minimum)



Source: U.S. Census Bureau.

Prepared by Portland State University  
Population Research Center.



## Race and Ethnicity, Portland City (North & Northeast) PUMA 1301

	2010 Census	2010 Census Percent	2015-19 ACS Estimate	2015-19 ACS Percent	Oregon 2015-19 ACS Percent
<b>HISPANIC OR LATINO AND RACE</b>					
Total population	109,997	100.0%	125,247	100.0%	100.0%
Hispanic or Latino	12,837	11.7%	13,750	11.0%*	13.0%
Not Hispanic or Latino	97,160	88.3%	111,497	89.0%*	87.0%
White alone	70,801	64.4%	85,189	68.0%*	75.7%
Black or African American alone	15,666	14.2%	13,348	10.7%*	1.8%
American Indian and Alaska Native alone	993	0.9%	963	0.8%	0.9%
Asian alone	3,551	3.2%	4,918	3.9%*	4.3%
Native Hawaiian and Other Pacific Islander alone	831	0.8%	511	0.4%*	0.4%
Some Other Race alone	320	0.3%	440	0.4%	0.1%
Two or More Races	4,998	4.5%	6,128	4.9%	3.7%

	2010 Census	2010 Census Percent	2015-19 ACS Estimate	2015-19 ACS Percent	Oregon 2015-19 ACS Percent
<b>RACE ALONE OR IN COMBINATION WITH ONE OR MORE OTHER RACES**</b>					
White	80,672	73.3%	102,147	81.6%*	88.8%
Black or African American	18,797	17.1%	16,743	13.4%*	2.9%
American Indian and Alaska Native	3,574	3.2%	3,306	2.6%*	3.1%
Asian	5,558	5.1%	8,052	6.4%*	6.0%
Native Hawaiian and Other Pacific Islander	1,535	1.4%	1,428	1.1%	0.8%
Some Other Race	7,230	6.6%	2,409	1.9%*	3.6%

Source: U.S. Census Bureau, 2010 Census and 2019 5-year American Community Survey estimates. PUMAs are Public Use Microdata Areas, groups of census tracts with a population of 100,000 or greater.

\* Difference between 2010 Census and 2015-19 ACS is statistically significant at the 90% confidence level.

\*\* Total may add to more than 100% due to persons identifying as more than one race.

## Race and Ethnicity, Portland City (East) PUMA 1302

	2010 Census	2010 Census Percent	2015-19 ACS Estimate	2015-19 ACS Percent	Oregon 2015-19 ACS Percent
<b>HISPANIC OR LATINO AND RACE</b>					
Total population	121,557	100.0%	127,930	100.0%	100.0%
Hispanic or Latino	17,794	14.6%	18,465	14.4%*	13.0%
Not Hispanic or Latino	103,763	85.4%	109,465	85.6%*	87.0%
White alone	75,109	61.8%	73,450	57.4%*	75.7%
Black or African American alone	8,993	7.4%	10,122	7.9%	1.8%
American Indian and Alaska Native alone	1,109	0.9%	1,139	0.9%	0.9%
Asian alone	12,721	10.5%	16,644	13.0%*	4.3%
Native Hawaiian and Other Pacific Islander alone	1,124	0.9%	2,222	1.7%*	0.4%
Some Other Race alone	220	0.2%	262	0.2%	0.1%
Two or More Races	4,487	3.7%	5,626	4.4%*	3.7%

	2010 Census	2010 Census Percent	2015-19 ACS Estimate	2015-19 ACS Percent	Oregon 2015-19 ACS Percent
<b>RACE ALONE OR IN COMBINATION WITH ONE OR MORE OTHER RACES**</b>					
White	86,465	71.1%	92,589	72.4%	88.8%
Black or African American	11,565	9.5%	13,241	10.4%*	2.9%
American Indian and Alaska Native	3,298	2.7%	3,234	2.5%	3.1%
Asian	14,614	12.0%	18,784	14.7%*	6.0%
Native Hawaiian and Other Pacific Islander	1,666	1.4%	2,948	2.3%*	0.8%
Some Other Race	10,526	8.7%	4,362	3.4%*	3.6%

Source: U.S. Census Bureau, 2010 Census and 2019 5-year American Community Survey estimates. PUMAs are Public Use Microdata Areas, groups of census tracts with a population of 100,000 or greater.

\* Difference between 2010 Census and 2015-19 ACS is statistically significant at the 90% confidence level.

\*\* Total may add to more than 100% due to persons identifying as more than one race.

## Race and Ethnicity, Portland City (Southeast) PUMA 1303

HISPANIC OR LATINO AND RACE	2010 Census	2010 Census Percent	2015-19 ACS Estimate	2015-19 ACS Percent	Oregon 2015-19 ACS Percent
Total population	107,779	100.0%	119,074	100.0%	100.0%
Hispanic or Latino	9,671	9.0%	10,729	9.0%*	13.0%
Not Hispanic or Latino	98,108	91.0%	108,345	91.0%*	87.0%
White alone	79,481	73.7%	84,970	71.4%*	75.7%
Black or African American alone	3,125	2.9%	3,403	2.9%	1.8%
American Indian and Alaska Native alone	847	0.8%	745	0.6%	0.9%
Asian alone	10,060	9.3%	12,393	10.4%*	4.3%
Native Hawaiian and Other Pacific Islander alone	451	0.4%	514	0.4%	0.4%
Some Other Race alone	183	0.2%	555	0.5%	0.1%
Two or More Races	3,961	3.7%	5,765	4.8%*	3.7%

RACE ALONE OR IN COMBINATION WITH ONE OR MORE OTHER RACES**	2010 Census	2010 Census Percent	2015-19 ACS Estimate	2015-19 ACS Percent	Oregon 2015-19 ACS Percent
White	88,051	81.7%	98,458	82.7%	88.8%
Black or African American	4,673	4.3%	5,733	4.8%	2.9%
American Indian and Alaska Native	2,744	2.5%	2,809	2.4%	3.1%
Asian	12,019	11.2%	15,592	13.1%*	6.0%
Native Hawaiian and Other Pacific Islander	723	0.7%	976	0.8%	0.8%
Some Other Race	5,038	4.7%	3,118	2.6%*	3.6%

Source: U.S. Census Bureau, 2010 Census and 2019 5-year American Community Survey estimates. PUMAs are Public Use Microdata Areas, groups of census tracts with a population of 100,000 or greater.

\* Difference between 2010 Census and 2015-19 ACS is statistically significant at the 90% confidence level.

\*\* Total may add to more than 100% due to persons identifying as more than one race.

## Race and Ethnicity, Portland City (Central East) PUMA 1305

	2010 Census	2010 Census Percent	2015-19 ACS Estimate	2015-19 ACS Percent	Oregon 2015-19 ACS Percent
<b>HISPANIC OR LATINO AND RACE</b>					
Total population	110,888	100.0%	123,097	100.0%	100.0%
Hispanic or Latino	7,273	6.6%	9,183	7.5%*	13.0%
Not Hispanic or Latino	103,615	93.4%	113,914	92.5%*	87.0%
White alone	88,346	79.7%	97,366	79.1%	75.7%
Black or African American alone	4,336	3.9%	3,194	2.6%*	1.8%
American Indian and Alaska Native alone	679	0.6%	526	0.4%	0.9%
Asian alone	5,978	5.4%	7,645	6.2%*	4.3%
Native Hawaiian and Other Pacific Islander alone	251	0.2%	170	0.1%	0.4%
Some Other Race alone	284	0.3%	138	0.1%*	0.1%
Two or More Races	3,741	3.4%	4,875	4.0%*	3.7%

	2010 Census	2010 Census Percent	2015-19 ACS Estimate	2015-19 ACS Percent	Oregon 2015-19 ACS Percent
<b>RACE ALONE OR IN COMBINATION WITH ONE OR MORE OTHER RACES**</b>					
White	95,916	86.5%	109,355	88.8%*	88.8%
Black or African American	5,854	5.3%	4,455	3.6%*	2.9%
American Indian and Alaska Native	2,339	2.1%	2,621	2.1%	3.1%
Asian	7,843	7.1%	10,138	8.2%*	6.0%
Native Hawaiian and Other Pacific Islander	554	0.5%	591	0.5%	0.8%
Some Other Race	3,447	3.1%	2,238	1.8%*	3.6%

Source: U.S. Census Bureau, 2010 Census and 2019 5-year American Community Survey estimates. PUMAs are Public Use Microdata Areas, groups of census tracts with a population of 100,000 or greater.

\* Difference between 2010 Census and 2015-19 ACS is statistically significant at the 90% confidence level.

\*\* Total may add to more than 100% due to persons identifying as more than one race.

# Race and Ethnicity, Portland City (Northwest & Southwest) PUMA 1314

HISPANIC OR LATINO AND RACE	2010 Census	2010 Census Percent	2015-19 ACS Estimate	2015-19 ACS Percent	Oregon 2015-19 ACS Percent
Total population	127,843	100.0%	143,756	100.0%	100.0%
Hispanic or Latino	6,052	4.7%	8,909	6.2%*	13.0%
Not Hispanic or Latino	121,791	95.3%	134,847	93.8%*	87.0%
White alone	105,976	82.9%	113,643	79.1%*	75.7%
Black or African American alone	2,935	2.3%	4,722	3.3%*	1.8%
American Indian and Alaska Native alone	757	0.6%	545	0.4%*	0.9%
Asian alone	7,253	5.7%	8,925	6.2%	4.3%
Native Hawaiian and Other Pacific Islander alone	272	0.2%	335	0.2%	0.4%
Some Other Race alone	277	0.2%	224	0.2%	0.1%
Two or More Races	4,321	3.4%	6,453	4.5%*	3.7%

RACE ALONE OR IN COMBINATION WITH ONE OR MORE OTHER RACES**	2010 Census	2010 Census Percent	2015-19 ACS Estimate	2015-19 ACS Percent	Oregon 2015-19 ACS Percent
White	114,244	89.4%	126,738	88.2%*	88.8%
Black or African American	4,081	3.2%	6,506	4.5%*	2.9%
American Indian and Alaska Native	2,193	1.7%	2,208	1.5%	3.1%
Asian	9,979	7.8%	12,923	9.0%*	6.0%
Native Hawaiian and Other Pacific Islander	676	0.5%	727	0.5%	0.8%
Some Other Race	2,162	1.7%	2,298	1.6%	3.6%

Source: U.S. Census Bureau, 2010 Census and 2019 5-year American Community Survey estimates. PUMAs are Public Use Microdata Areas, groups of census tracts with a population of 100,000 or greater.

\* Difference between 2010 Census and 2015-19 ACS is statistically significant at the 90% confidence level.

\*\* Total may add to more than 100% due to persons identifying as more than one race.



## Race and Ethnicity, Multnomah County (East)— Gresham & Troutdale Cities PUMA 1316

HISPANIC OR LATINO AND RACE	2010 Census	2010 Census Percent	2015-19 ACS Estimate	2015-19 ACS Percent	Oregon 2015-19 ACS Percent
Total population	157,270	100.0%	165,661	100.0%	100.0%
Hispanic or Latino	26,511	16.9%	32,240	19.5%*	13.0%
Not Hispanic or Latino	130,759	83.1%	133,421	80.5%*	87.0%
White alone	110,590	70.3%	106,303	64.2%*	75.7%
Black or African American alone	4,864	3.1%	7,904	4.8%*	1.8%
American Indian and Alaska Native alone	1,142	0.7%	1,607	1.0%	0.9%
Asian alone	7,945	5.1%	8,602	5.2%	4.3%
Native Hawaiian and Other Pacific Islander alone	941	0.6%	1,157	0.7%	0.4%
Some Other Race alone	236	0.2%	283	0.2%	0.1%
Two or More Races	5,041	3.2%	7,565	4.6%*	3.7%

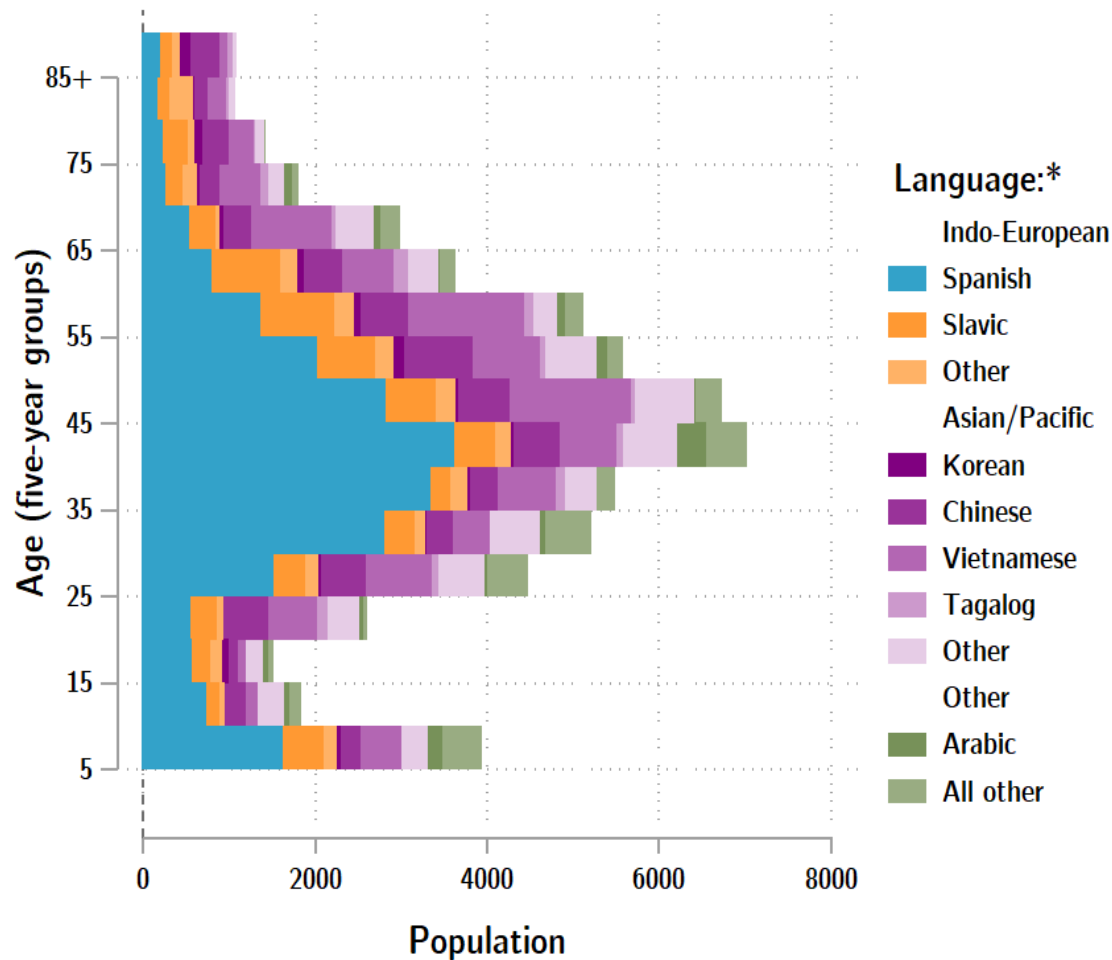
RACE ALONE OR IN COMBINATION WITH ONE OR MORE OTHER RACES**	2010 Census	2010 Census Percent	2015-19 ACS Estimate	2015-19 ACS Percent	Oregon 2015-19 ACS Percent
White	126,928	80.7%	137,932	83.3%*	88.8%
Black or African American	7,120	4.5%	11,789	7.1%*	2.9%
American Indian and Alaska Native	3,893	2.5%	4,827	2.9%	3.1%
Asian	10,134	6.4%	11,842	7.1%*	6.0%
Native Hawaiian and Other Pacific Islander	1,643	1.0%	2,048	1.2%	0.8%
Some Other Race	15,047	9.6%	7,392	4.5%*	3.6%

Source: U.S. Census Bureau, 2010 Census and 2019 5-year American Community Survey estimates. PUMAs are Public Use Microdata Areas, groups of census tracts with a population of 100,000 or greater.

\* Difference between 2010 Census and 2015-19 ACS is statistically significant at the 90% confidence level.

\*\* Total may add to more than 100% due to persons identifying as more than one race.

## Multnomah County population by age & language: 2019



## Language Spoken at Home Speak English less than "very well" Multnomah County

Languages	Estimate
Total Population Age 5 and Older	760,424
Speaking English less than "very well"	59,036
Spanish	23,319
Russian, Polish, or other Slavic languages	6,665
Other Indo-European languages	3,450
Korean	726
Chinese (incl. Cantonese and Mandarin)	6,606
Vietnamese	10,079
Tagalog (incl. Filipino)	785
Other Asian and Pacific Island languages	5,546
Arabic	1,160
Other languages	700

Source: U.S. Census Bureau American Community Survey 2019 5-year estimates, Table C16001.

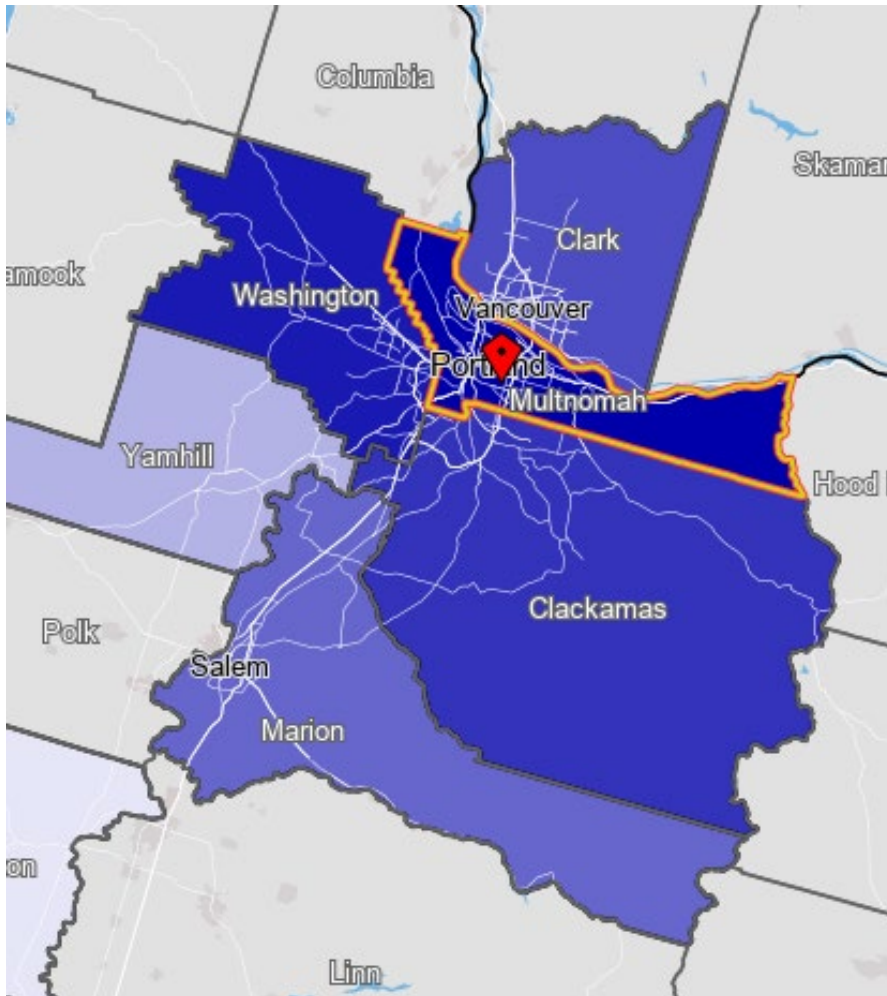
Note: \* Languages for persons who speak English less than very well.

Source: ACS tables B16004, C16001, PUMS; PEP estimates; Analysis by PRC, PSU

[Link to Table C16001](#) for all counties, including margins of error.

[Visualization](#) of language data by census tract within county.

# Multnomah County Commute Flows

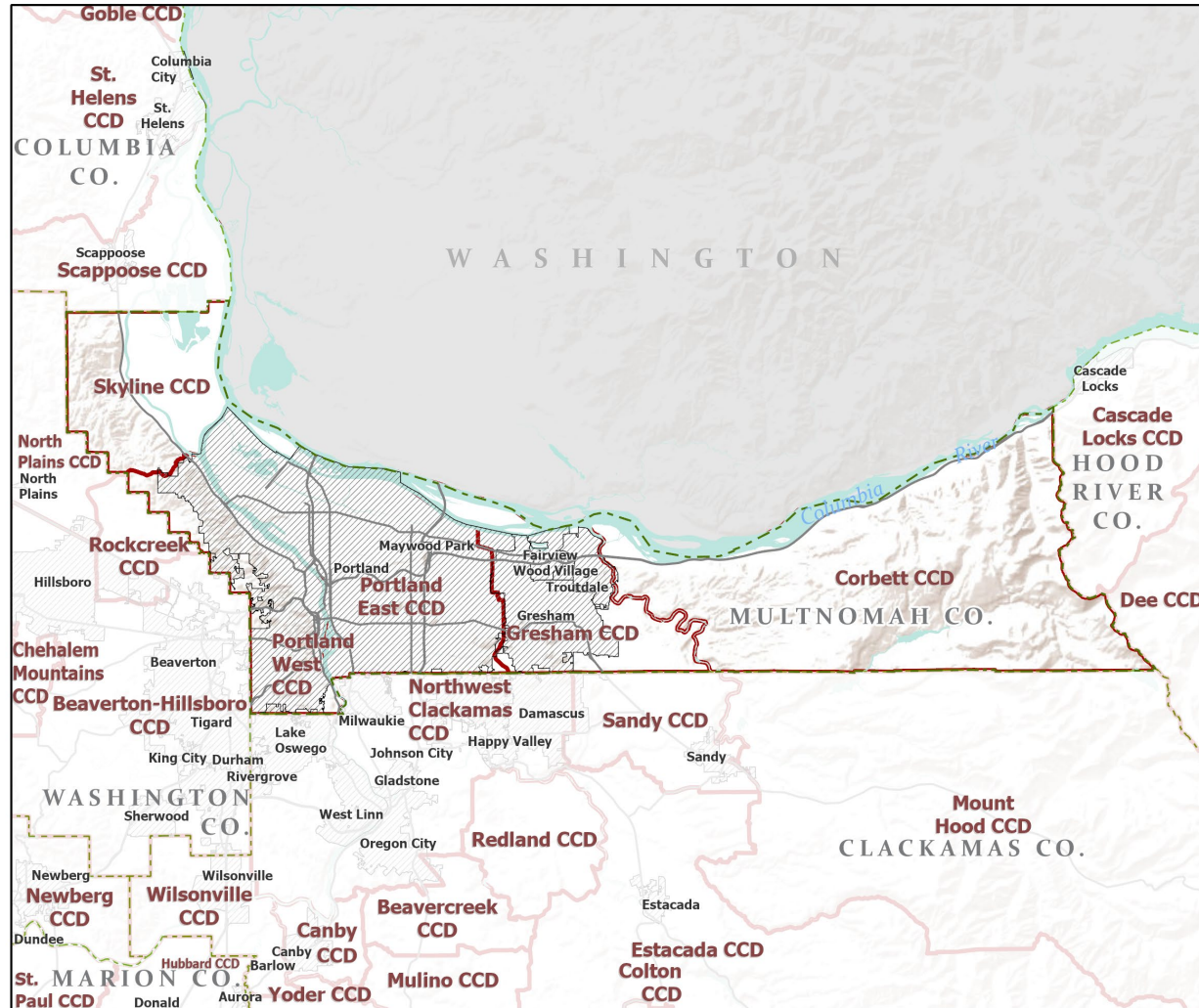


Explore sub-county commute flows in [this interactive map](#).

## Jobs Counts by Counties Where Workers are Employed - All Jobs

	2018	
	Count	Share
<a href="#">All Counties</a>	393,149	100.0%
<a href="#">Multnomah County, OR</a>	256,269	65.2%
<a href="#">Washington County, OR</a>	54,306	13.8%
<a href="#">Clackamas County, OR</a>	39,962	10.2%
<a href="#">Clark County, WA</a>	11,247	2.9%
<a href="#">Marion County, OR</a>	6,813	1.7%
<a href="#">Lane County, OR</a>	2,986	0.8%
<a href="#">King County, WA</a>	2,293	0.6%
<a href="#">Yamhill County, OR</a>	1,780	0.5%
<a href="#">Deschutes County, OR</a>	1,583	0.4%
<a href="#">Benton County, OR</a>	1,051	0.3%
<b>All Other Locations</b>	<b>14,859</b>	<b>3.8%</b>

# County Subdivisions (CCDs): Multnomah County



- Counties
- Incorporated Cities
- Highways
- County Subdivisions (CCDs)



Portland State University,  
Population Research Center,  
May 2021.  
[www.pdx.edu/prc](http://www.pdx.edu/prc)

Sources: Esri, USGS, NOAA  
State of Oregon GEO;  
Oregon Dept. of  
Transportation.

# Multnomah County Employment by Sector by Census County Division

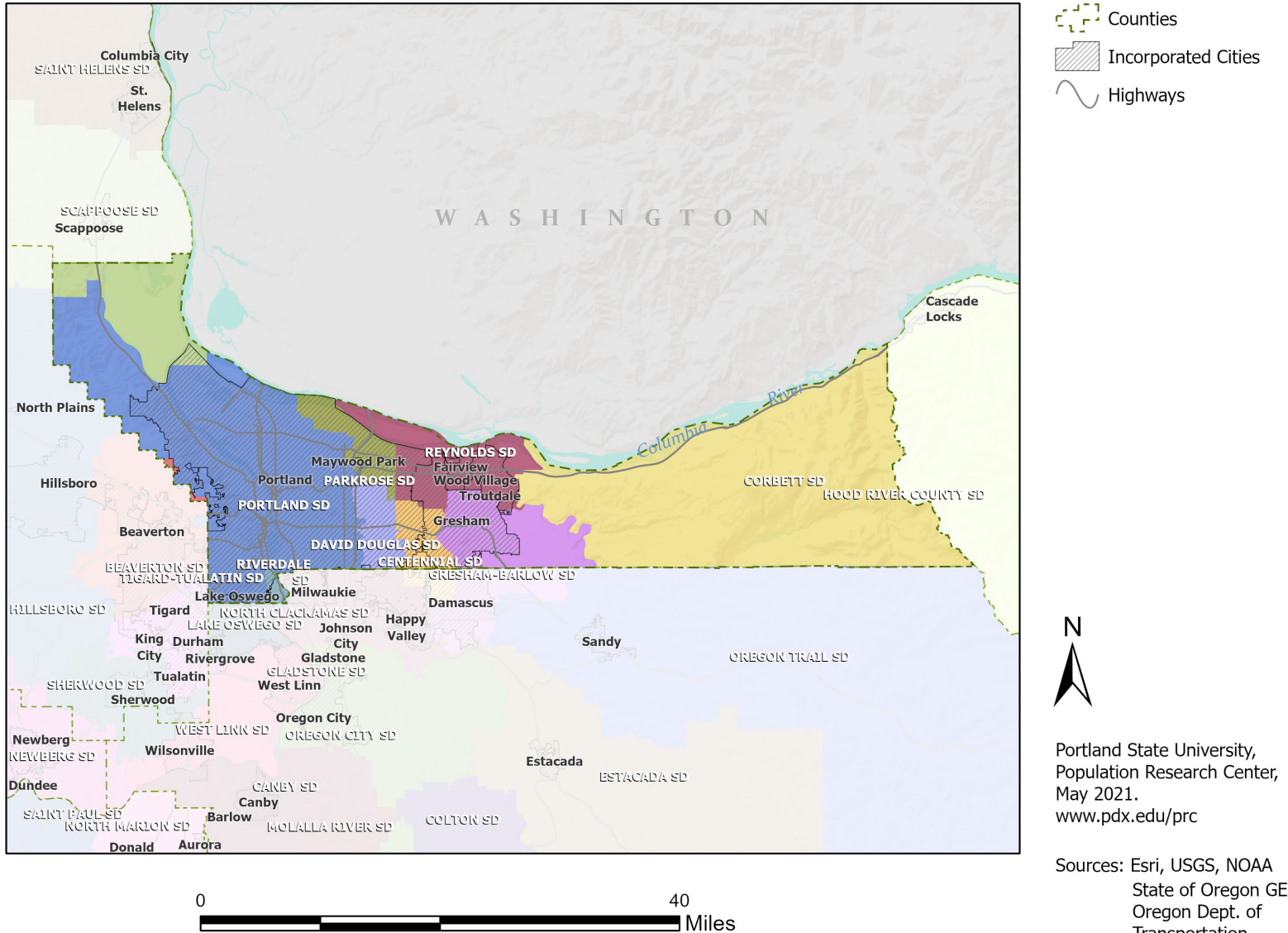
Sector	Oregon	County Total	Corbett CCD	Gresham CCD	Portland East CCD	Portland West CCD	Skyline CCD
Total, All Jobs*	1,904,601	519,658	767	58,405	271,940	187,891	655
Goods-Producing	18.6%	11.8%	24.4%	22.9%	12.8%	6.7%	52.8%
Natural Resources and Mining	2.7%	0.3%	7.0%	0.8%	0.1%	0.2%	42.6%
Construction	5.9%	4.8%	16.6%	7.0%	5.3%	3.3%	9.2%
Manufacturing	10.0%	6.7%	0.8%	15.2%	7.4%	3.2%	1.1%
Service Providing	81.4%	88.2%	75.6%	77.1%	87.2%	93.3%	47.2%
Trade, Transportation, and Utilities	18.6%	19.0%	8.0%	25.0%	24.2%	9.6%	7.2%
Information	2.0%	2.7%	0.9%	0.5%	1.9%	4.4%	0.3%
Financial Activities	4.6%	6.1%	1.2%	4.8%	3.4%	10.4%	1.7%
Professional and Business Services	13.4%	17.3%	4.4%	8.3%	13.6%	25.5%	3.5%
Education and Health Services	23.1%	24.4%	29.5%	22.2%	24.2%	25.2%	15.4%
Leisure and Hospitality	11.4%	11.6%	22.2%	10.0%	12.5%	10.8%	9.2%
Other Services	4.2%	4.4%	9.4%	4.8%	4.7%	3.9%	6.9%
Public Administration	4.2%	2.7%	0.1%	1.5%	2.6%	3.4%	3.1%

Source: U.S. Census Bureau, LEHD Origin-Destination Employment Statistics, 2018 Q2

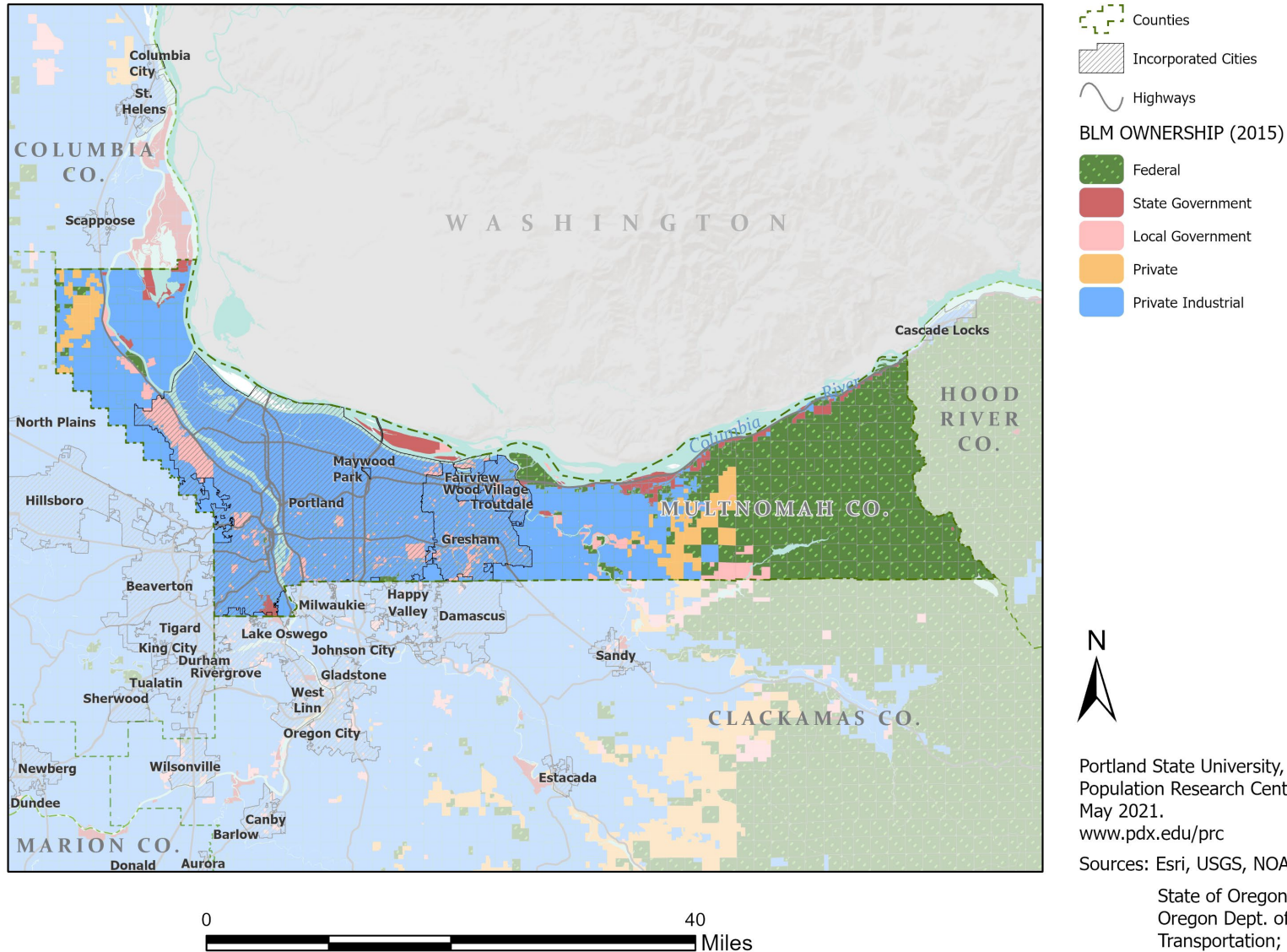
\* Jobs covered by unemployment insurance and federal workers.



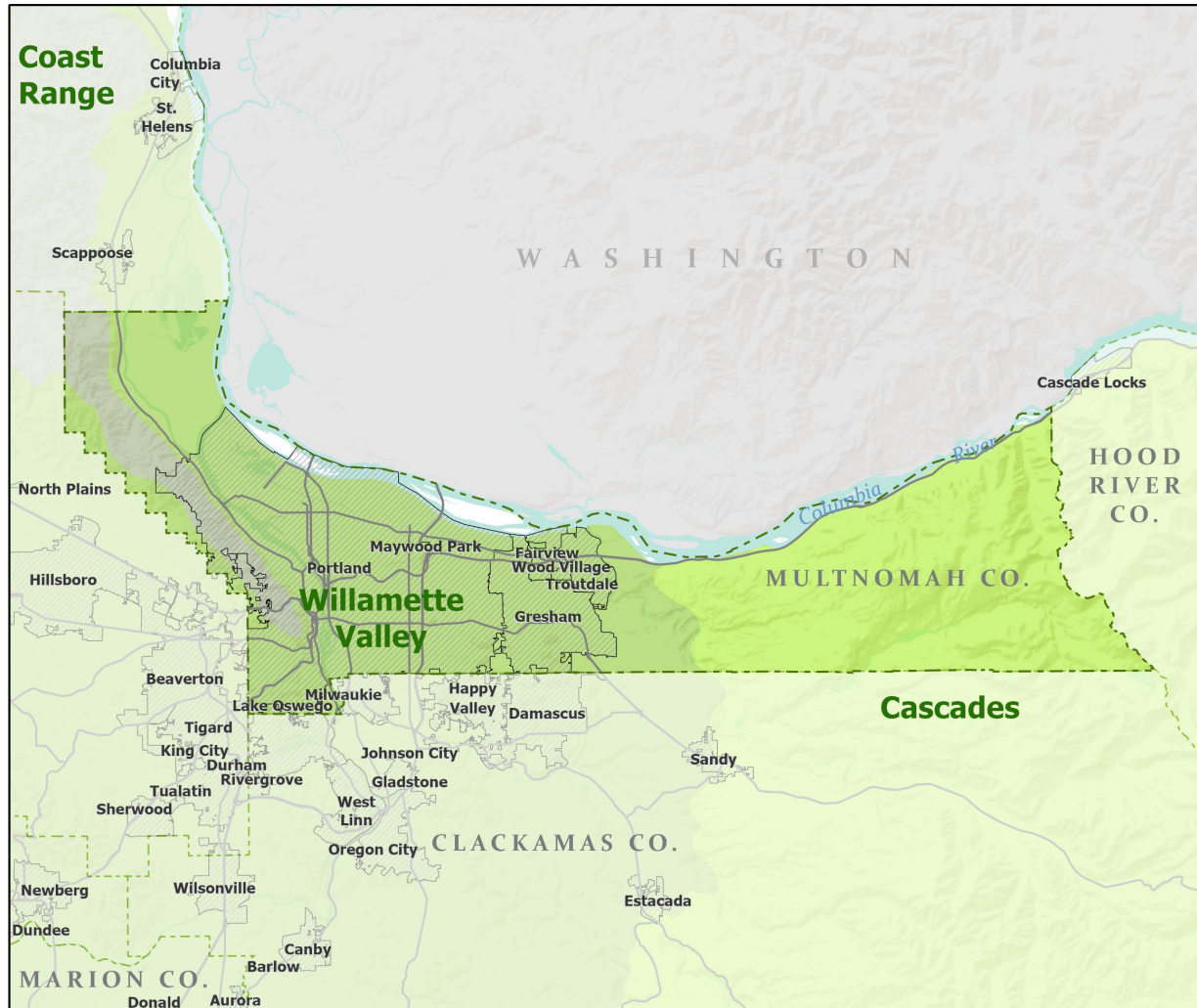
# School Districts: Multnomah County



# Land Ownership: Multnomah County



# Ecoregions: Multnomah County



- Counties
- Incorporated Cities
- Highways
- LEVEL III ECOREGIONS OF OREGON (2006)
- Cascades
- Coast Range
- Willamette Valley



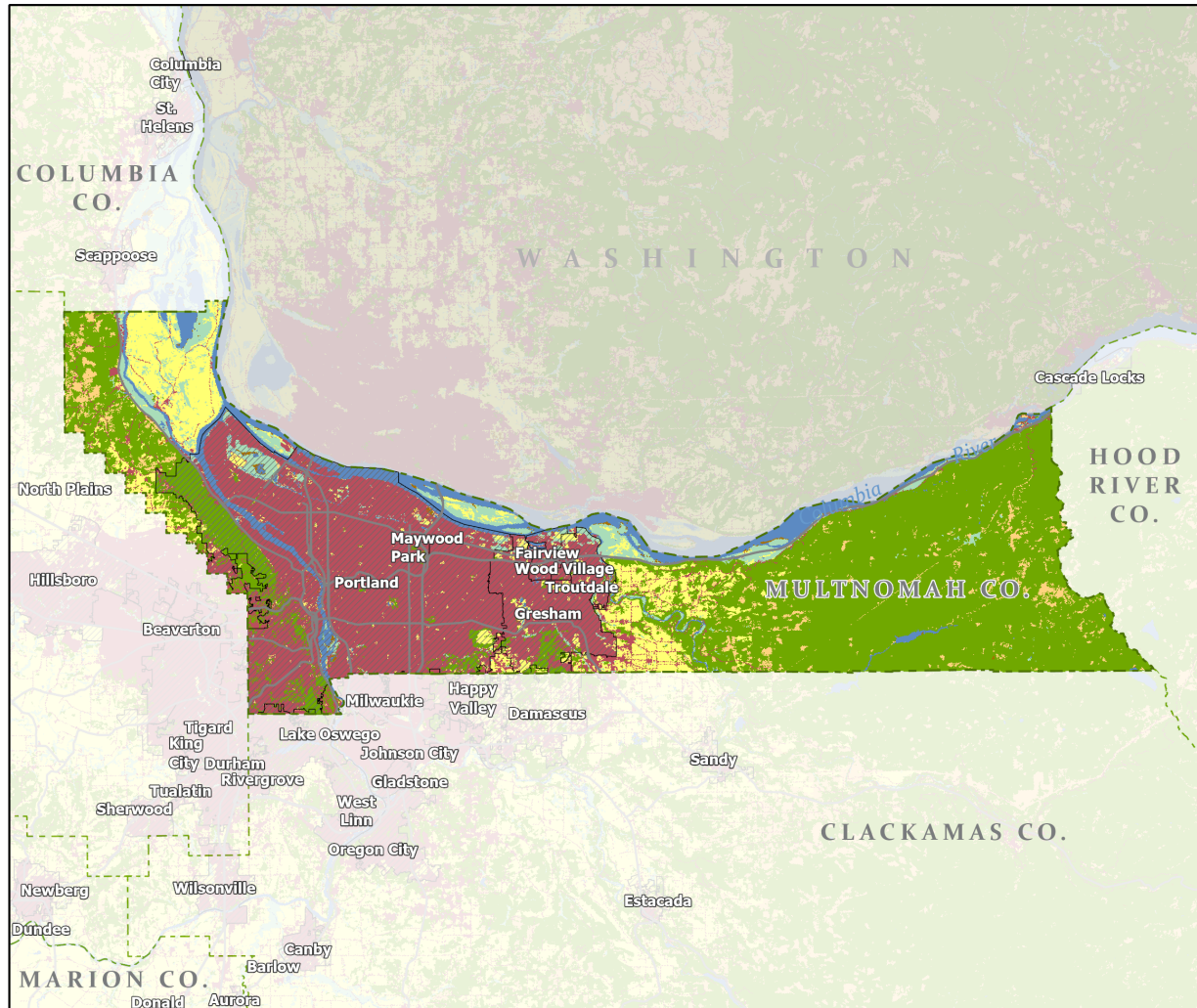
Portland State University,  
Population Research Center,  
May 2021.  
[www.pdx.edu/prc](http://www.pdx.edu/prc)

Sources: Esri, USGS, NOAA  
State of Oregon GEO;  
Oregon Dept. of  
Transportation.

0 40 Miles



# Land Cover: Multnomah County



- Counties
- Incorporated Cities
- Highways

## NATIONAL LAND COVER

- Developed
- Cultivated Crops/Pasture/Hay
- Barren Land
- Forest
- Grasslands/Scrub/Sedge
- Lichens/Moss
- Wetlands
- Perennial Snow/Ice
- Open Water



Portland State University,  
Population Research Center,  
May 2021.  
[www.pdx.edu/prc](http://www.pdx.edu/prc)

Sources: Esri, USGS, NOAA  
State of Oregon GEO;  
Oregon Dept. of  
Transportation.

0 40 Miles