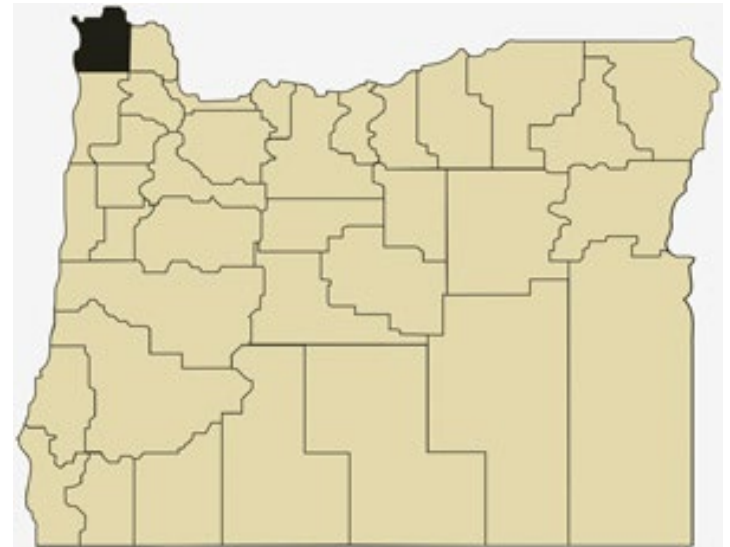


# Clatsop County Overview

## House and Senate Committees on Redistricting

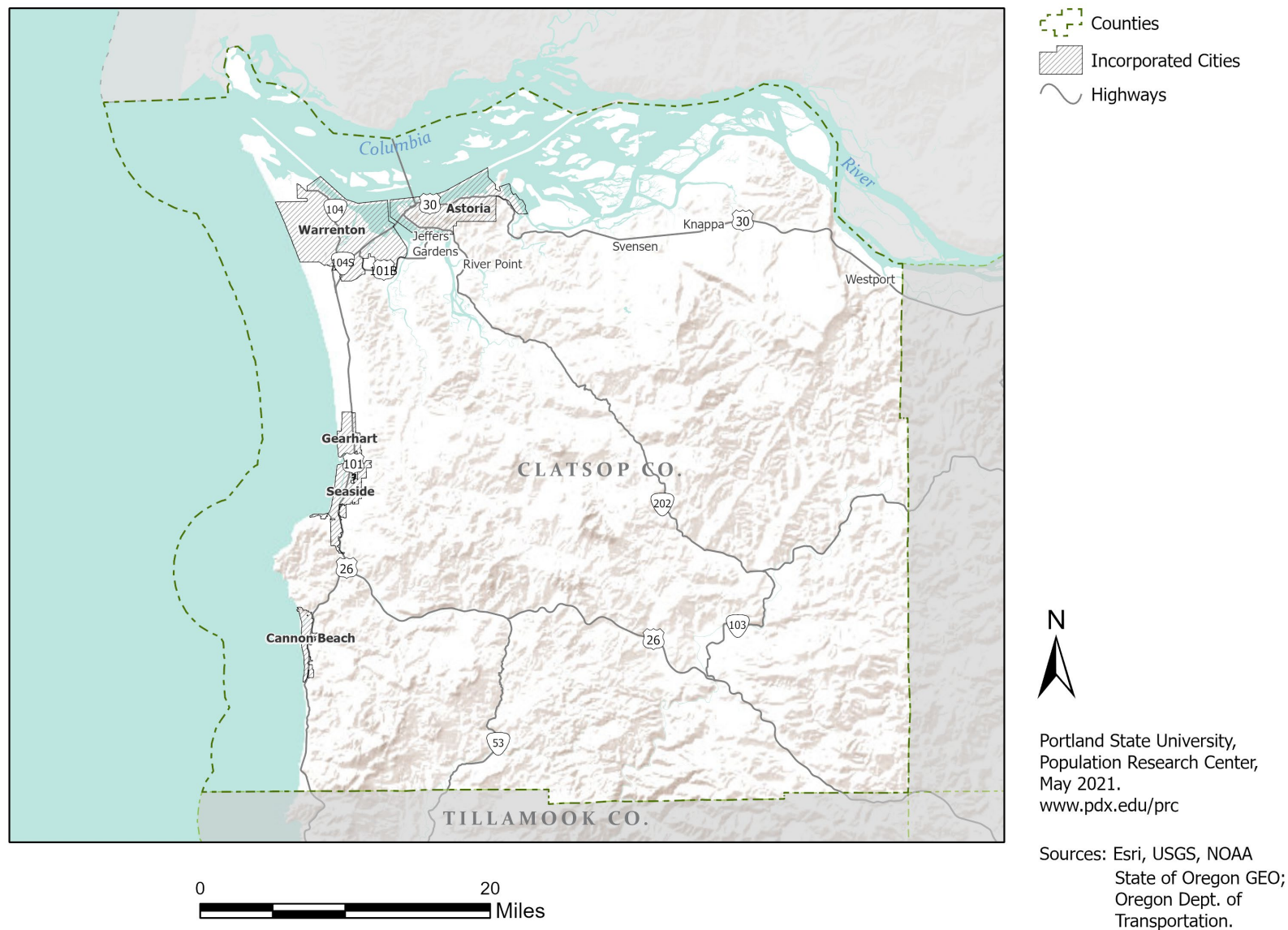
June 15, 2021

July 1, 2020 population estimate	39,455
Population rank	19th
Share of state population	0.9%
Density (per square mile)	36.4
Density rank	17th
Area (square miles)	1,085
Area rank	27th
Share of state area	1.1%

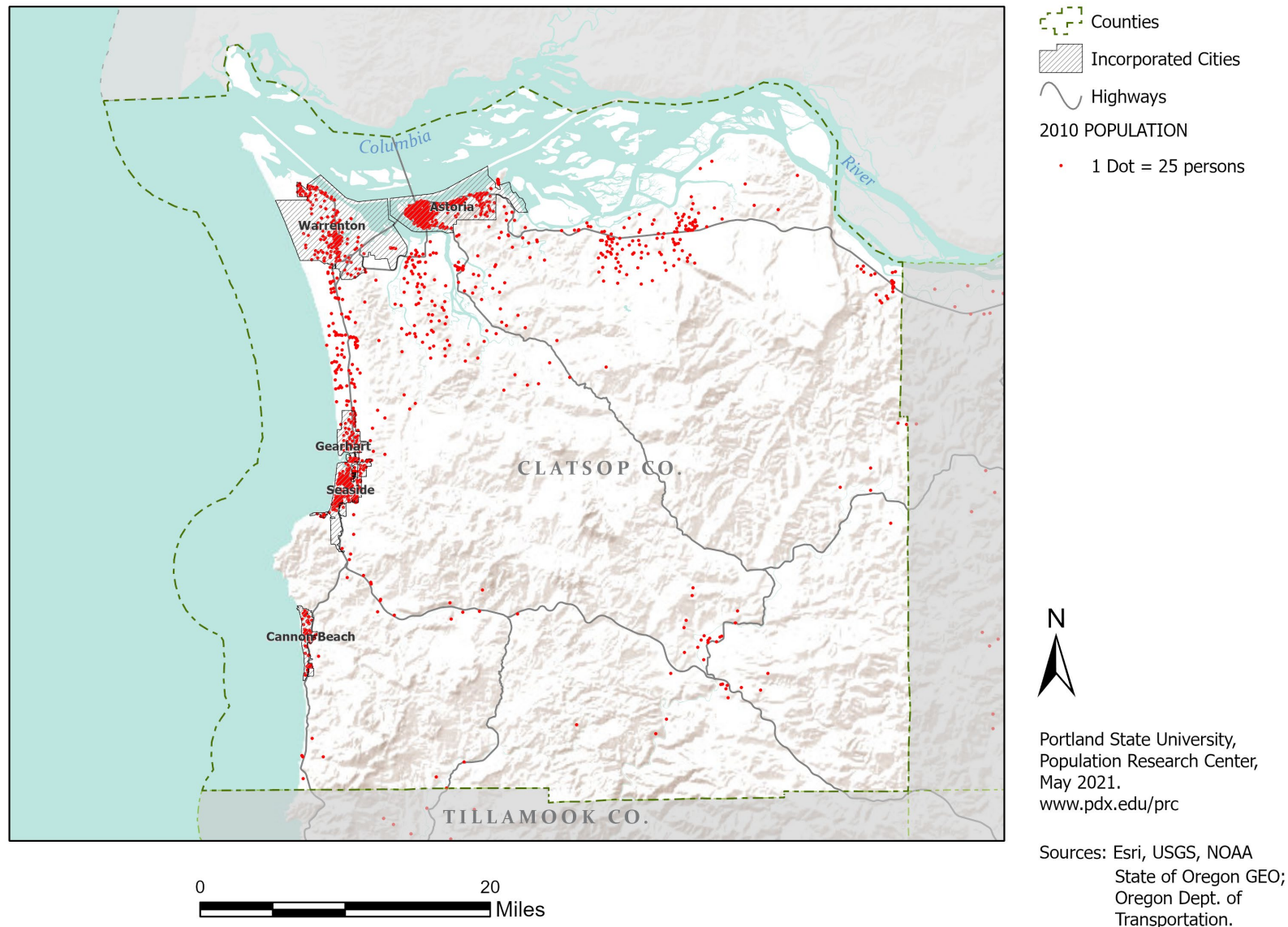


Sources: PSU Population Research Center; Oregon Blue Book.

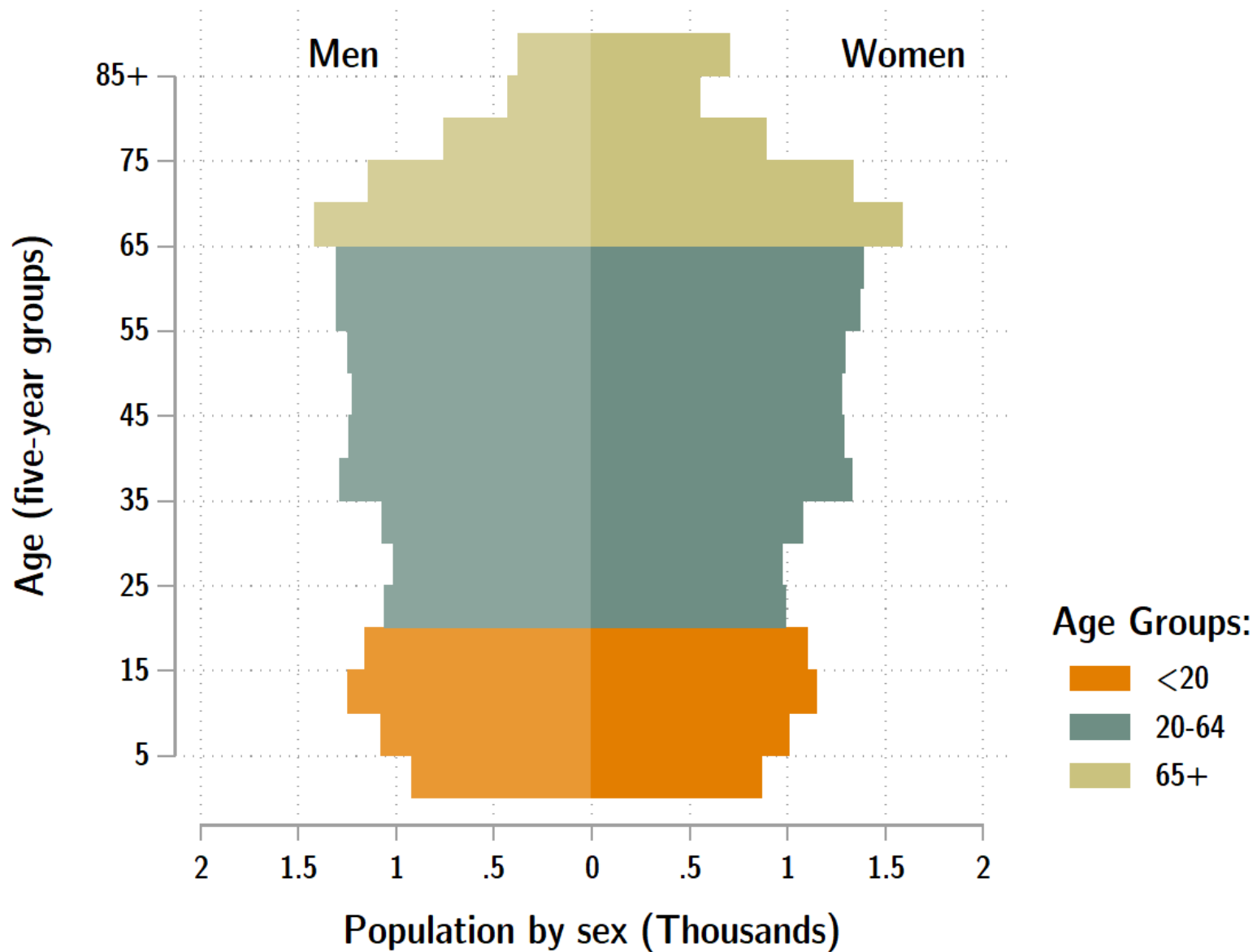
# Highways: Clatsop County



# Population: Clatsop County



# Clatsop population by age & sex: 2020



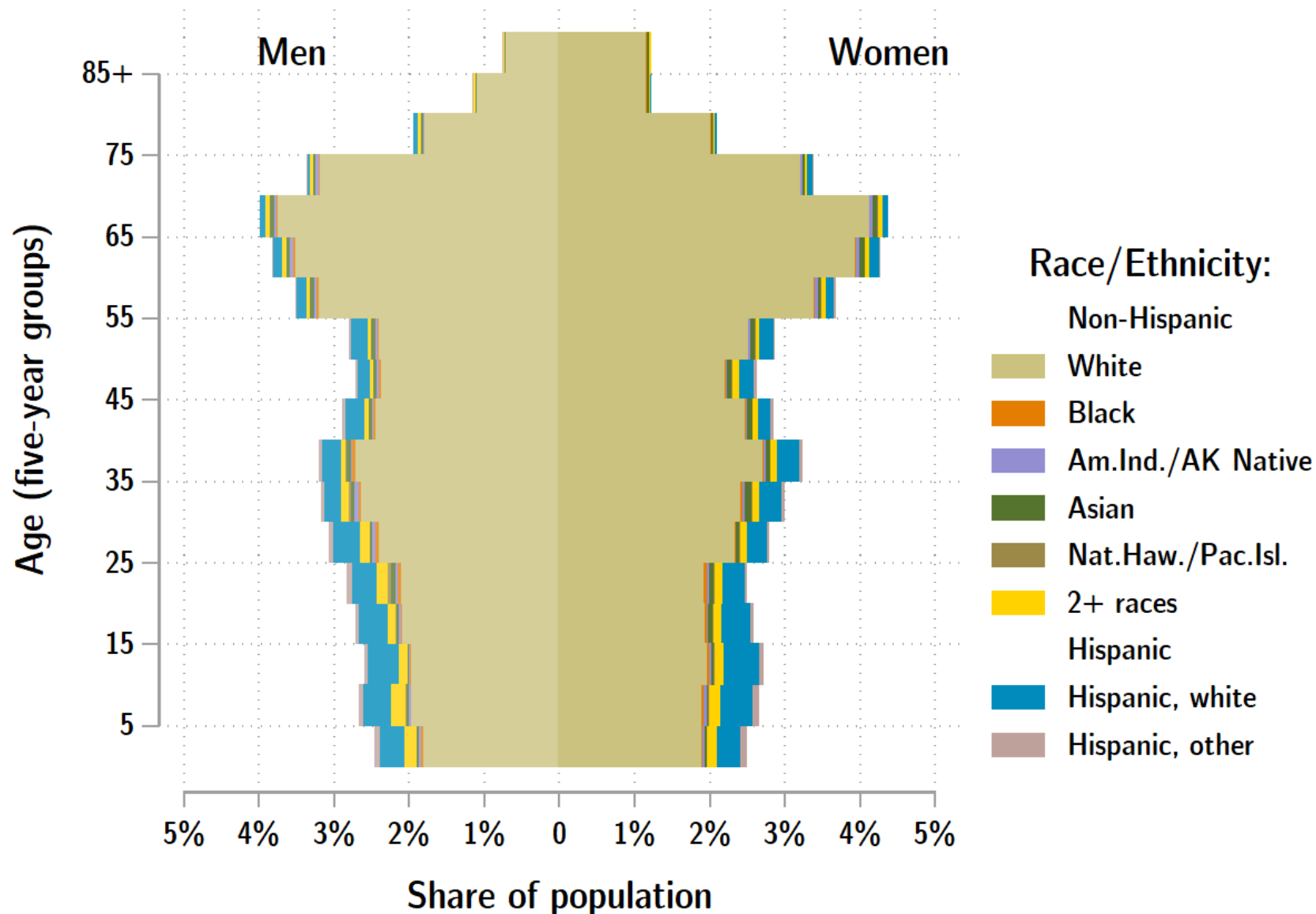
Source: Estimates by Population Research Center, PSU

# Age Distribution, Clatsop County

Age Group	2020 Estimate	2020 Percent of Total	Oregon 2020 Percent of Total
Total population	39,455	100.0%	100.0%
Under age 5	1,784	4.5%	5.4%
Age 5 to 17	5,742	14.6%	14.9%
Age 18 to 64	22,739	57.6%	61.1%
Age 65 and over	9,190	23.3%	18.6%

Source: PSU Population Research Center July 1, 2020 Population Estimates

# Clatsop County population by age & sex: 2019



Source: Estimates by US Census Bureau

# Race and Ethnicity, Clatsop County

HISPANIC OR LATINO AND RACE	2010 Census	2010 Census Percent	2015-19 ACS Estimate	2015-19 ACS Percent	Oregon 2015-19 ACS Percent
Total population	37,039	100.0%	39,102	100.0%	100.0%
Hispanic or Latino	2,838	7.7%	3,329	8.5%*	13.0%
Not Hispanic or Latino	34,201	92.3%	35,773	91.5%*	87.0%
White alone	32,295	87.2%	33,440	85.5%*	75.7%
Black or African American alone	163	0.4%	314	0.8%*	1.8%
American Indian and Alaska Native alone	308	0.8%	141	0.4%*	0.9%
Asian alone	445	1.2%	387	1.0%	4.3%
Native Hawaiian and Other Pacific Islander alone	84	0.2%	118	0.3%	0.4%
Some Other Race alone	48	0.1%	9	0.0%*	0.1%
Two or More Races	858	2.3%	1,364	3.5%*	3.7%

RACE ALONE OR IN COMBINATION WITH ONE OR MORE OTHER RACES**	2010 Census	2010 Census Percent	2015-19 ACS Estimate	2015-19 ACS Percent	Oregon 2015-19 ACS Percent
White	34,660	93.6%	37,599	96.2%*	88.8%
Black or African American	337	0.9%	559	1.4%*	2.9%
American Indian and Alaska Native	864	2.3%	1,128	2.9%*	3.1%
Asian	765	2.1%	953	2.4%*	6.0%
Native Hawaiian and Other Pacific Islander	212	0.6%	351	0.9%*	0.8%
Some Other Race	1,349	3.6%	581	1.5%*	3.6%

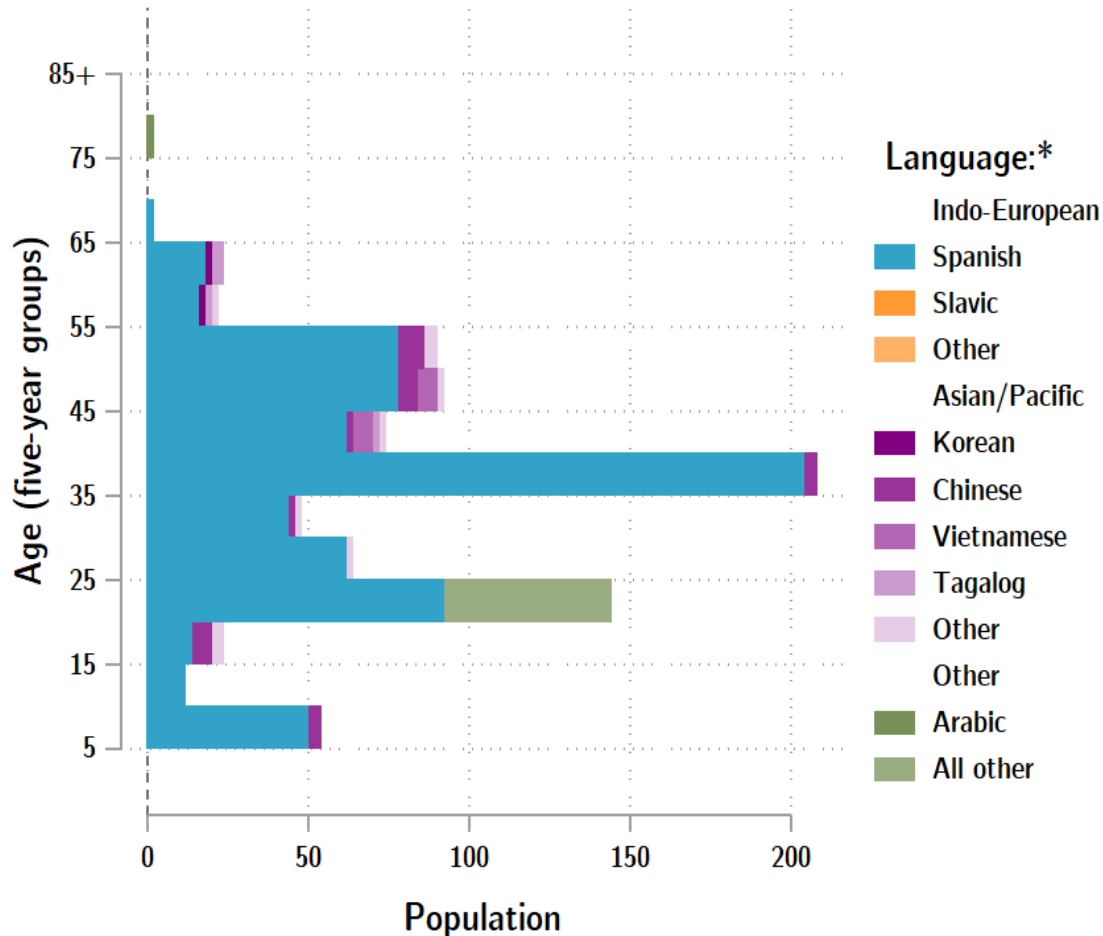
Source: U.S. Census Bureau, 2010 Census and 2019 5-year American Community Survey estimates.

\* Difference between 2010 Census and 2015-19 ACS is statistically significant at the 90% confidence level.

\*\* Total may add to more than 100% due to persons identifying as more than one race.



## Clatsop County population by age & language: 2019



## Language Spoken at Home Speak English less than "very well" Clatsop County

Languages	Estimate
Total Population Age 5 and Older	37,088
Speaking English less than "very well"	896
Spanish	733
Russian, Polish, or other Slavic languages	26
Other Indo-European languages	0
Korean	6
Chinese (incl. Cantonese and Mandarin)	30
Vietnamese	15
Tagalog (incl. Filipino)	13
Other Asian and Pacific Island languages	19
Arabic	7
Other languages	47

Source: U.S. Census Bureau American Community Survey 2019 5-year estimates, Table C16001.

Note: \* Languages for persons who speak English less than very well.

Source: ACS tables B16004, C16001, PUMS; PEP estimates; Analysis by PRC, PSU

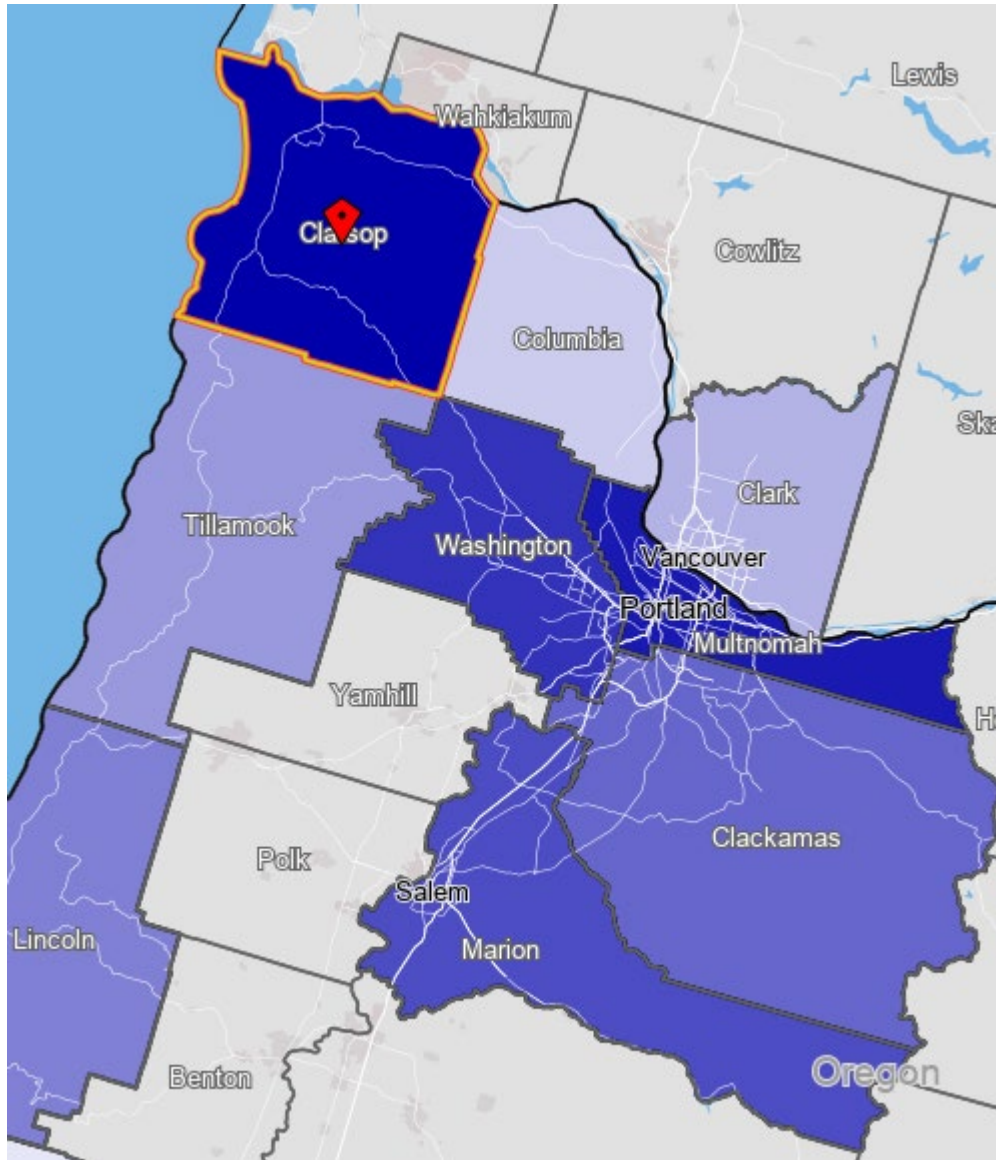
[Link to Table C16001](#) for all counties, including margins of error.

[Visualization](#) of language data by census tract within county.













# Clatsop County Commute Flows

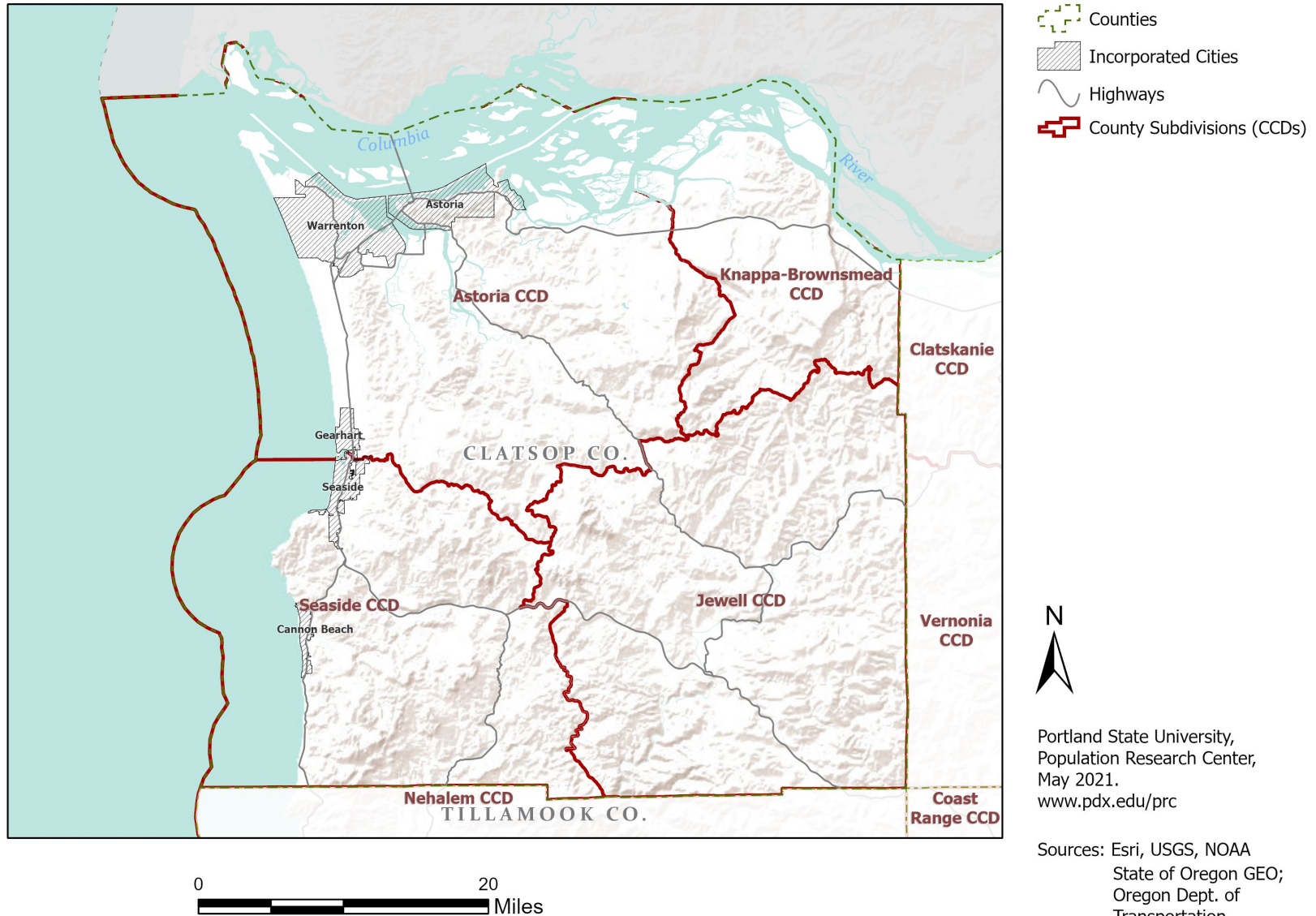
Explore sub-county commute flows in [this interactive map](#).



## Jobs Counts by Counties Where Workers are Employed - All Jobs

	2018	
	Count	Share
<a href="#">All Counties</a>	19,348	100.0%
 <a href="#">Clatsop County, OR</a>	11,626	60.1%
 <a href="#">Multnomah County, OR</a>	1,825	9.4%
 <a href="#">Washington County, OR</a>	1,415	7.3%
 <a href="#">Marion County, OR</a>	686	3.5%
 <a href="#">Clackamas County, OR</a>	674	3.5%
 <a href="#">Lincoln County, OR</a>	290	1.5%
 <a href="#">Tillamook County, OR</a>	275	1.4%
 <a href="#">Clark County, WA</a>	247	1.3%
 <a href="#">Columbia County, OR</a>	235	1.2%
 <a href="#">Lane County, OR</a>	230	1.2%
<b>All Other Locations</b>	1,845	9.5%

# County Subdivisions (CCDs): Clatsop County



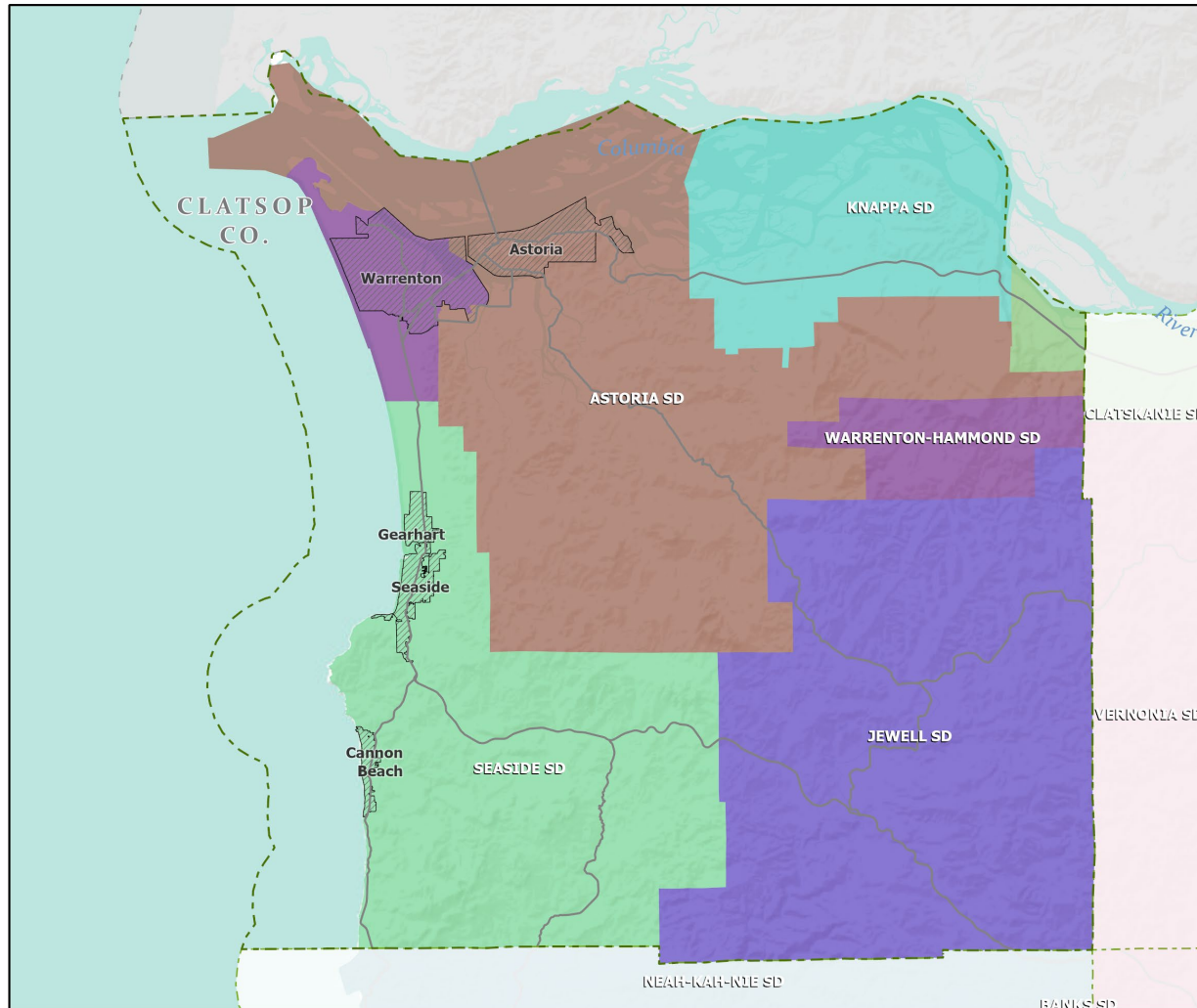
# Clatsop County Employment by Sector by Census County Division

Sector	Oregon	County Total	Astoria CCD	Jewell CCD	Knappa-Brownsmead CCD	Seaside CCD
Total, All Jobs*	1,904,601	17,184	10,301	193	1,274	5,416
Goods-Producing	18.6%	17.9%	17.5%	15.0%	72.1%	6.2%
Natural Resources and Mining	2.7%	1.9%	2.2%	11.4%	5.2%	0.1%
Construction	5.9%	5.9%	7.0%	3.6%	2.6%	4.6%
Manufacturing	10.0%	10.1%	8.2%	0.0%	64.3%	1.5%
Service Providing	81.4%	82.1%	82.5%	85.0%	27.9%	93.8%
Trade, Transportation, and Utilities	18.6%	16.2%	17.8%	13.0%	4.8%	16.1%
Information	2.0%	0.8%	1.1%	0.5%	0.1%	0.6%
Financial Activities	4.6%	3.7%	4.0%	0.0%	0.9%	3.9%
Professional and Business Services	13.4%	5.2%	5.9%	5.2%	3.9%	4.1%
Education and Health Services	23.1%	19.6%	25.6%	27.5%	8.4%	10.8%
Leisure and Hospitality	11.4%	28.2%	19.4%	36.8%	6.4%	49.9%
Other Services	4.2%	4.2%	3.9%	0.5%	2.5%	5.4%
Public Administration	4.2%	4.1%	5.0%	1.6%	0.9%	3.1%

Source: U.S. Census Bureau, LEHD Origin-Destination Employment Statistics, 2018 Q2

\* Jobs covered by unemployment insurance and federal workers.

# School Districts: Clatsop County



- Counties
- Incorporated Cities
- Highways

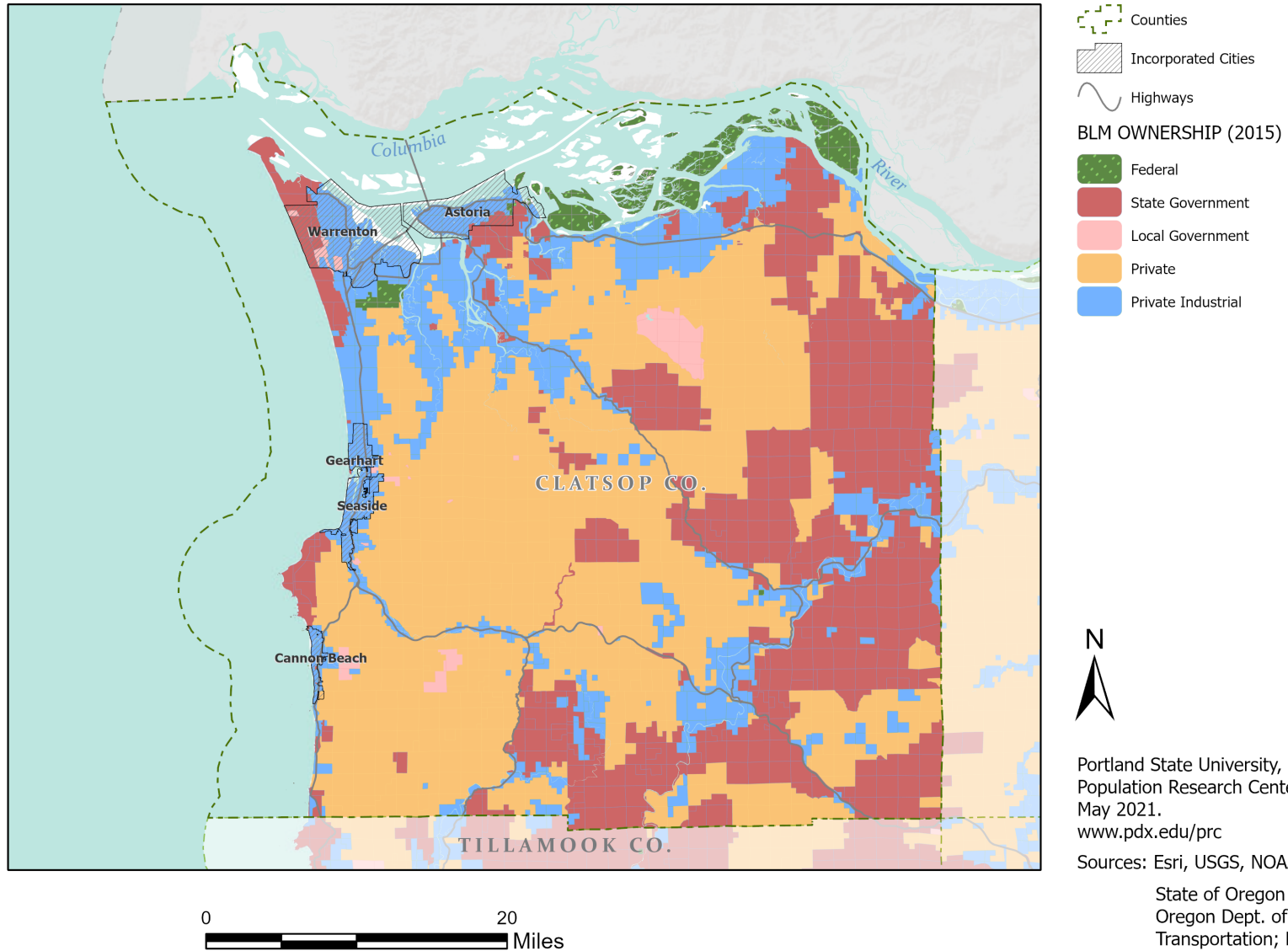


Portland State University,  
Population Research Center,  
May 2021.  
[www.pdx.edu/prc](http://www.pdx.edu/prc)

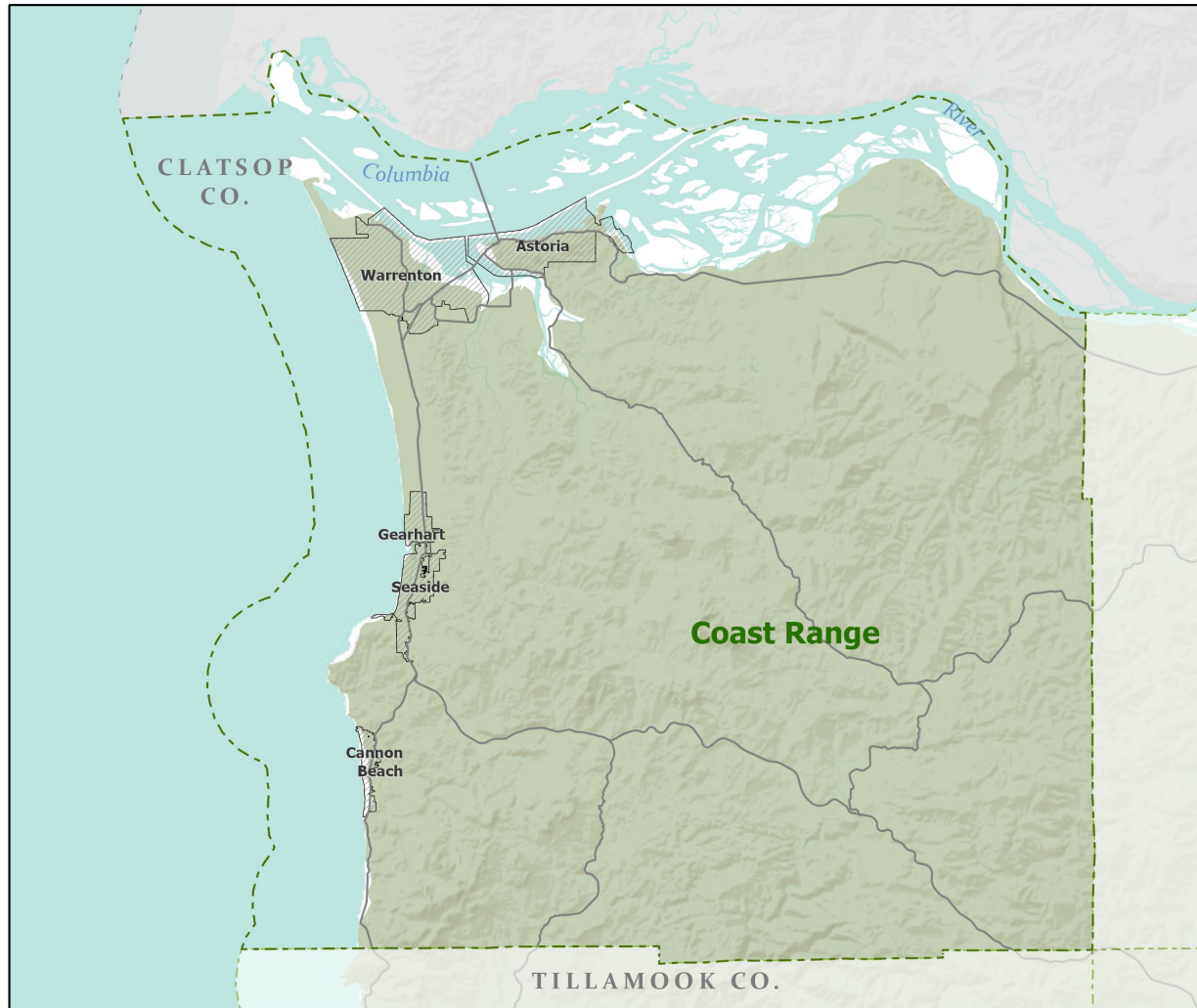
Sources: Esri, USGS, NOAA  
State of Oregon GEO;  
Oregon Dept. of  
Transportation.



# Land Ownership: Clatsop County



# Ecoregions: Clatsop County



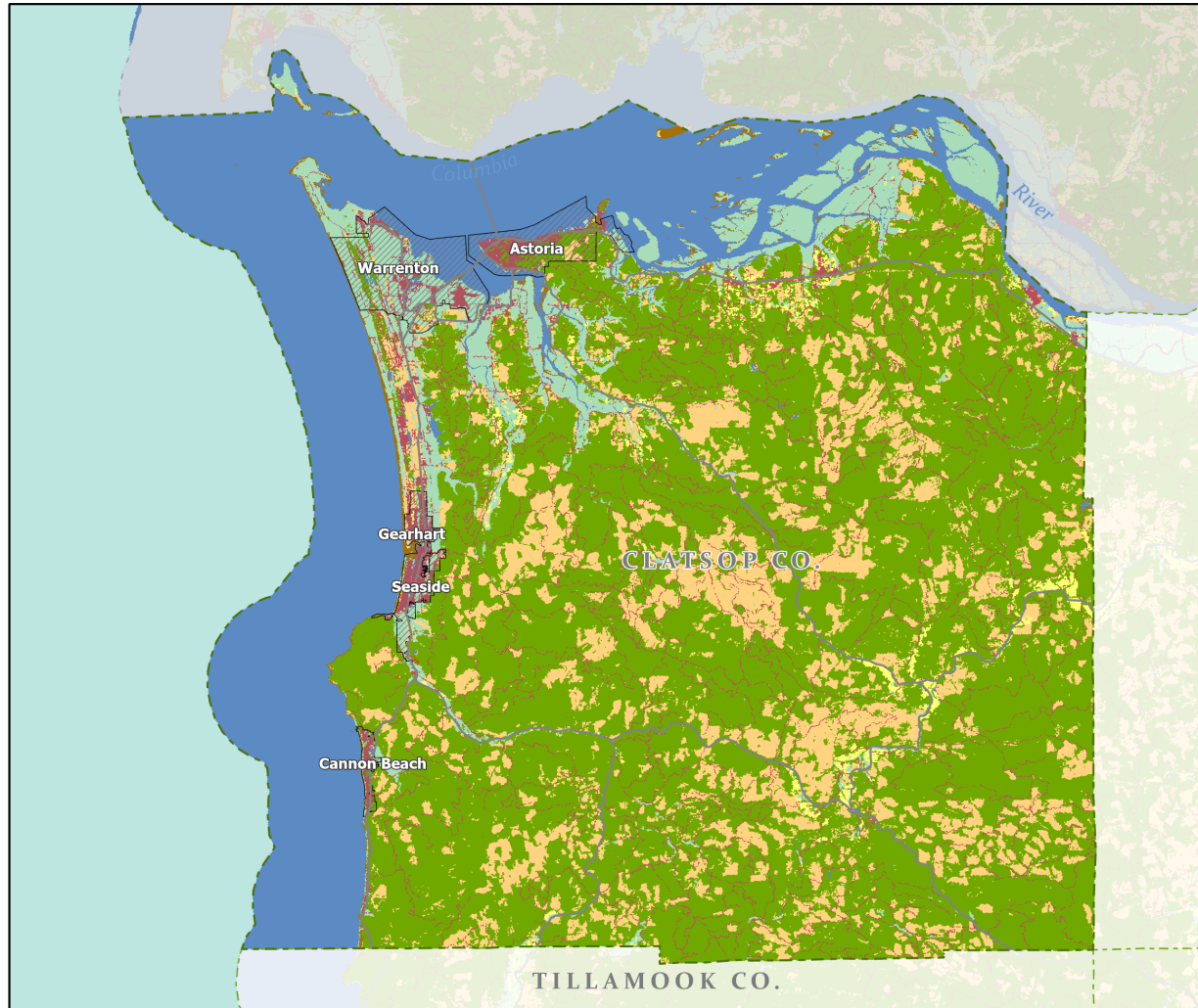
- Counties
- Incorporated Cities
- Highways
- LEVEL III ECOREGIONS OF OREGON (2006)
- Coast Range



Portland State University,  
Population Research Center,  
May 2021.  
[www.pdx.edu/prc](http://www.pdx.edu/prc)

Sources: Esri, USGS, NOAA  
State of Oregon GEO;  
Oregon Dept. of  
Transportation.

# Land Cover: Clatsop County



- Counties
- Incorporated Cities
- Highways

## NATIONAL LAND COVER

- Developed
- Cultivated Crops/Pasture/Hay
- Barren Land
- Forest
- Grasslands/Scrub/Sedge
- Lichens/Moss
- Wetlands
- Perennial Snow/Ice
- Open Water



Portland State University,  
Population Research Center,  
May 2021.  
[www.pdx.edu/prc](http://www.pdx.edu/prc)

Sources: Esri, USGS, NOAA  
State of Oregon GEO;  
Oregon Dept. of  
Transportation.

0 20 Miles