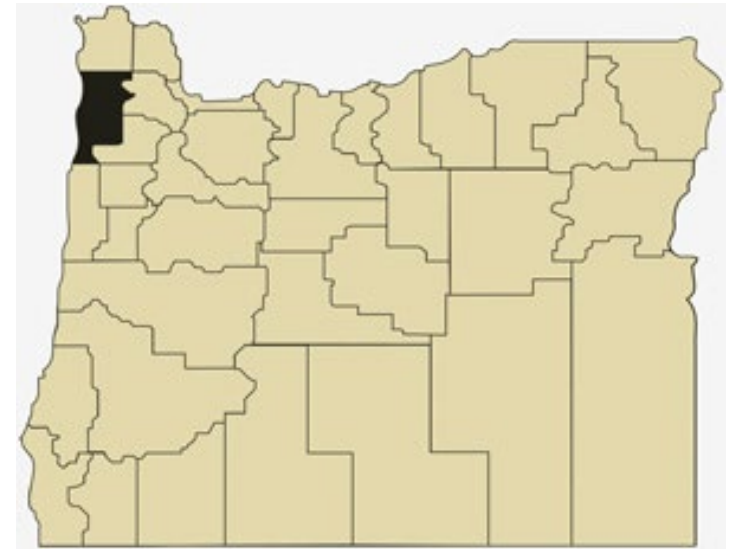


Tillamook County Overview

House and Senate Committees on Redistricting

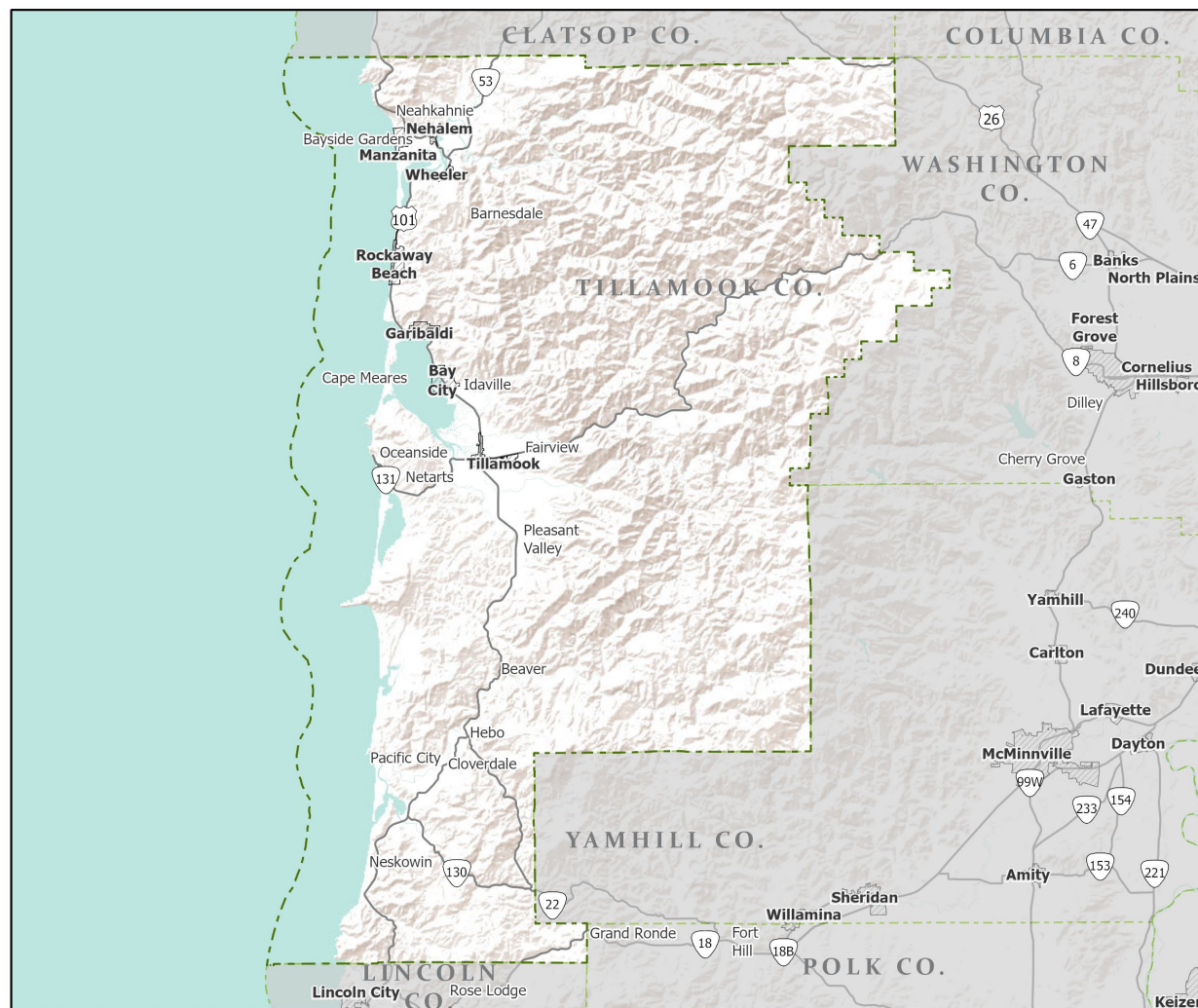
June 15, 2021

July 1, 2020 population estimate	26,530
Population rank	23rd
Share of state population	0.6%
Density (per square mile)	23.6
Density rank	19th
Area (square miles)	1,125
Area rank	26th
Share of state area	1.2%



Sources: PSU Population Research Center; Oregon Blue Book.

Highways: Tillamook County



-  Counties
-  Incorporated Cities
-  Highways



Portland State University,
Population Research Center,
May 2021.
www.pdx.edu/prc

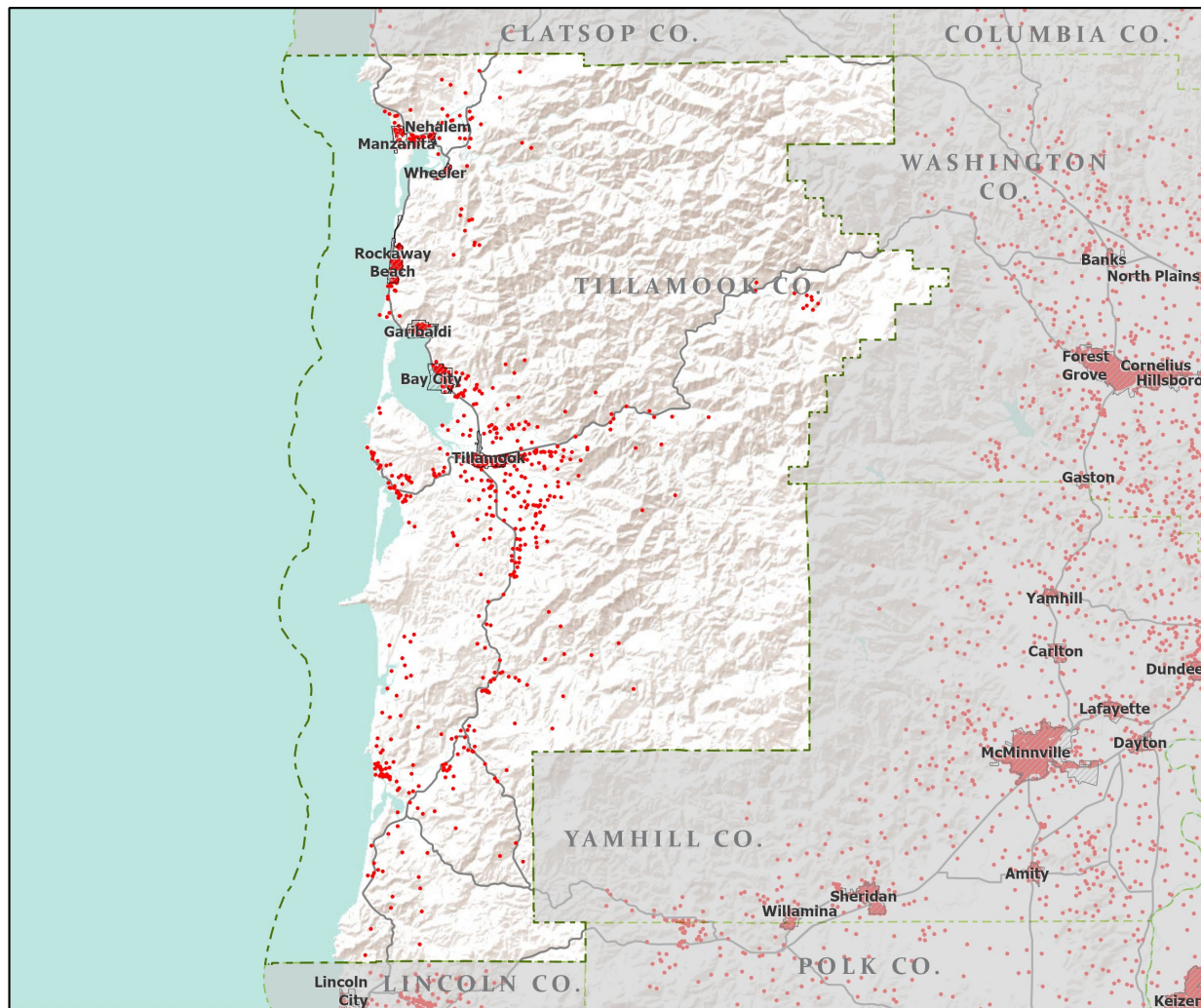
Sources: Esri, USGS, NOAA
State of Oregon GEO;
Oregon Dept. of
Transportation.

0 40 Miles



A horizontal scale bar with a black and white alternating pattern, marked with '0' and '40' and the word 'Miles'.

Population: Tillamook County



- Counties
- Incorporated Cities
- Highways
- 2010 POPULATION
- 1 Dot = 25 persons

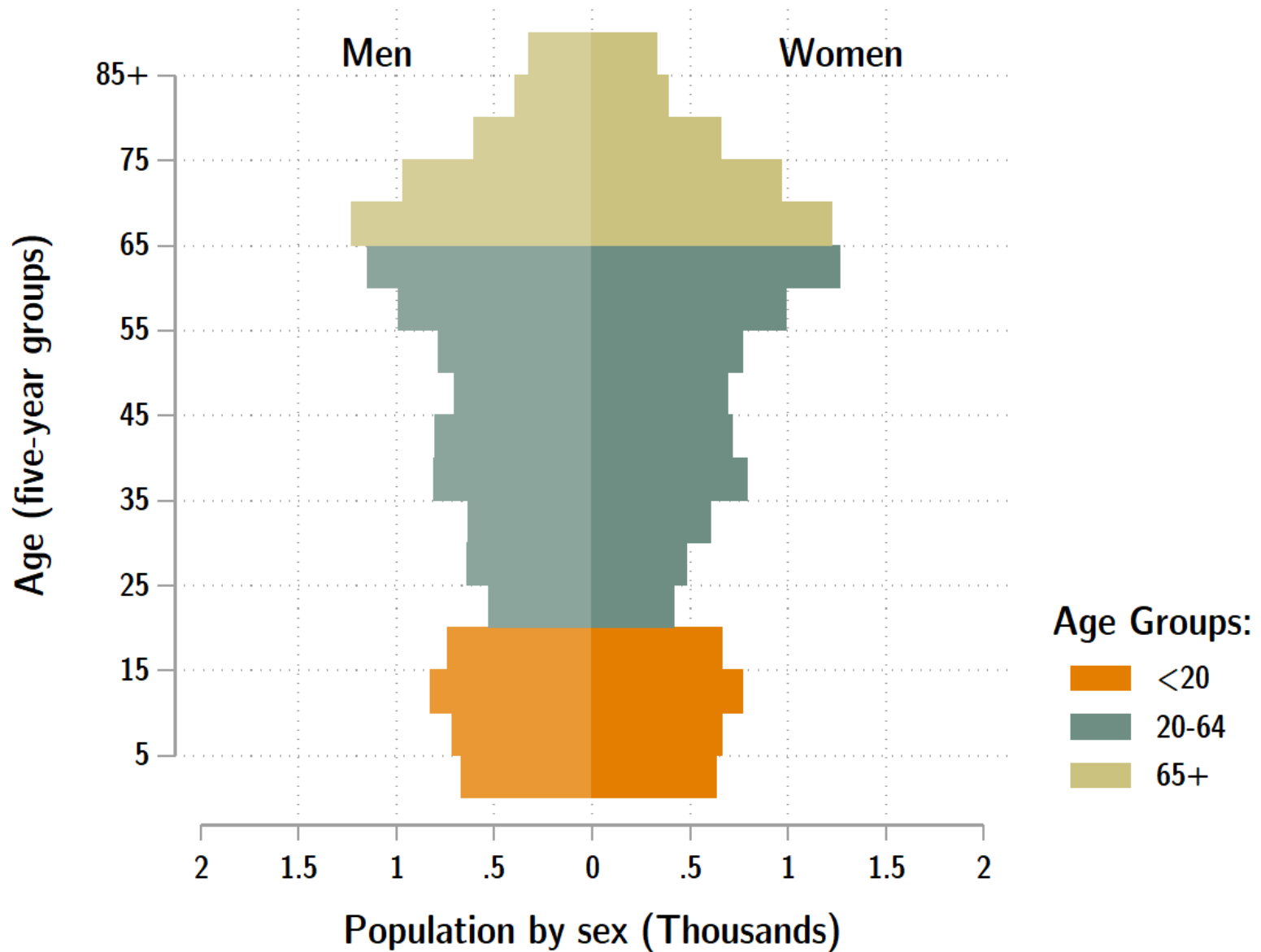


Portland State University,
Population Research Center,
May 2021.
www.pdx.edu/prc

Sources: Esri, USGS, NOAA
State of Oregon GEO;
Oregon Dept. of
Transportation.

0 40 Miles

Tillamook population by age & sex: 2020



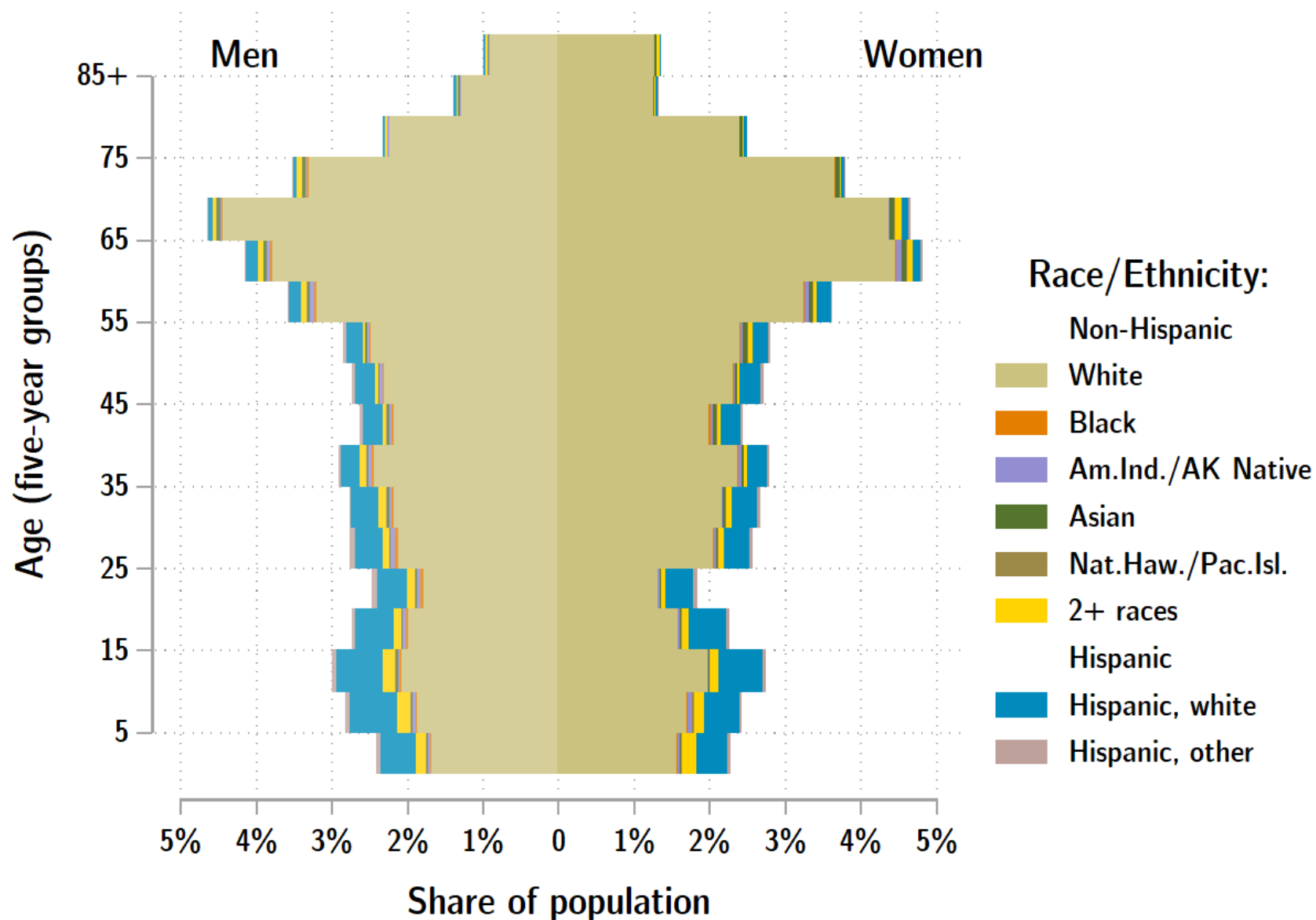
Source: Estimates by Population Research Center, PSU

Age Distribution, Tillamook County

Age Group	2020 Estimate	2020 Percent of Total	Oregon 2020 Percent of Total
Total population	26,530	100.0%	100.0%
Under age 5	1,302	4.9%	5.4%
Age 5 to 17	3,853	14.5%	14.9%
Age 18 to 64	14,291	53.9%	61.1%
Age 65 and over	7,084	26.7%	18.6%

Source: PSU Population Research Center July 1, 2020 Population Estimates

Tillamook County population by age & sex: 2019



Source: Estimates by US Census Bureau

Race and Ethnicity, Tillamook County

	2010 Census	2010 Census Percent	2015-19 ACS Estimate	2015-19 ACS Percent	Oregon 2015-19 ACS Percent
HISPANIC OR LATINO AND RACE					
Total population	25,250	100.0%	26,389	100.0%	100.0%
Hispanic or Latino	2,284	9.0%	2,727	10.3%*	13.0%
Not Hispanic or Latino	22,966	91.0%	23,662	89.7%*	87.0%
White alone	21,902	86.7%	22,258	84.3%*	75.7%
Black or African American alone	62	0.2%	102	0.4%	1.8%
American Indian and Alaska Native alone	220	0.9%	236	0.9%	0.9%
Asian alone	223	0.9%	181	0.7%	4.3%
Native Hawaiian and Other Pacific Islander alone	56	0.2%	123	0.5%*	0.4%
Some Other Race alone	25	0.1%	19	0.1%	0.1%
Two or More Races	478	1.9%	743	2.8%*	3.7%

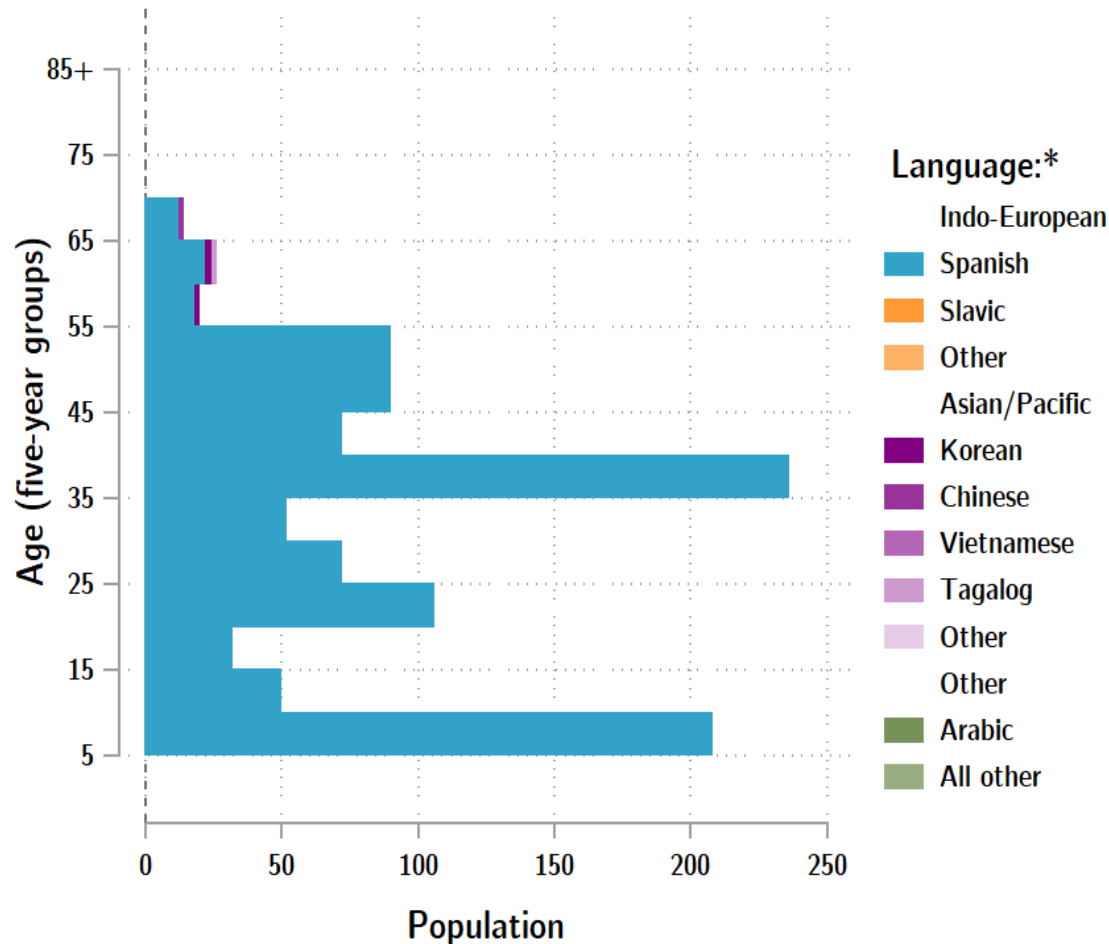
	2010 Census	2010 Census Percent	2015-19 ACS Estimate	2015-19 ACS Percent	Oregon 2015-19 ACS Percent
RACE ALONE OR IN COMBINATION WITH ONE OR MORE OTHER RACES**					
White	23,676	93.8%	25,419	96.3%*	88.8%
Black or African American	155	0.6%	302	1.1%*	2.9%
American Indian and Alaska Native	557	2.2%	667	2.5%*	3.1%
Asian	365	1.4%	474	1.8%*	6.0%
Native Hawaiian and Other Pacific Islander	141	0.6%	181	0.7%	0.8%
Some Other Race	1,014	4.0%	305	1.2%*	3.6%

Source: U.S. Census Bureau, 2010 Census and 2019 5-year American Community Survey estimates.

* Difference between 2010 Census and 2015-19 ACS is statistically significant at the 90% confidence level.

** Total may add to more than 100% due to persons identifying as more than one race.

Tillamook County population by age & language: 2019



Language Spoken at Home Speak English less than "very well" Tillamook County

Languages	Estimate
Total Population Age 5 and Older	25,167
Speaking English less than "very well"	1,097
Spanish	1,057
Russian, Polish, or other Slavic languages	0
Other Indo-European languages	1
Korean	8
Chinese (incl. Cantonese and Mandarin)	3
Vietnamese	0
Tagalog (incl. Filipino)	5
Other Asian and Pacific Island languages	0
Arabic	0
Other languages	23

Source: U.S. Census Bureau American Community Survey 2019 5-year estimates, Table C16001.

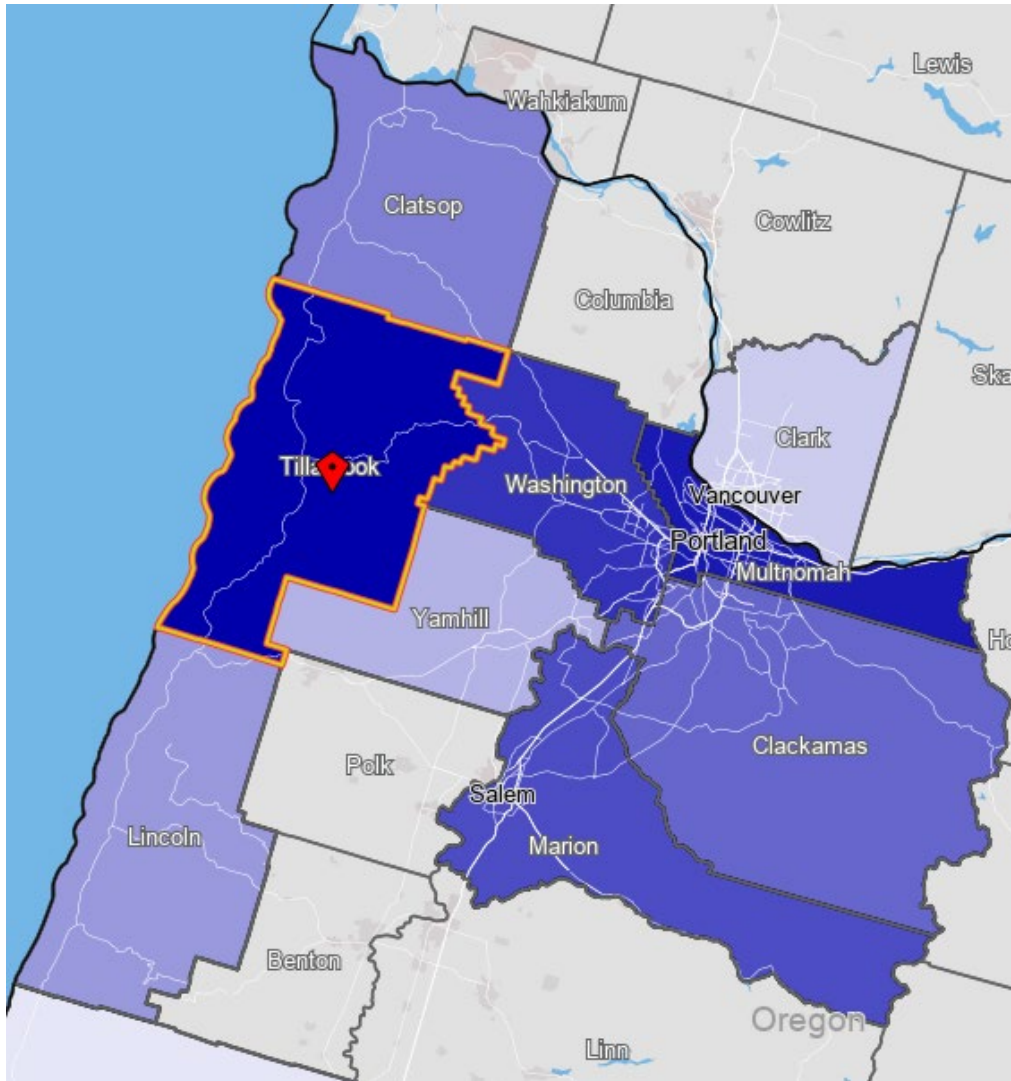
Note: * Languages for persons who speak English less than very well.

Source: ACS tables B16004, C16001, PUMS; PEP estimates; Analysis by PRC, PSU

[Link to Table C16001](#) for all counties, including margins of error.

[Visualization](#) of language data by census tract within county.

Tillamook County Commute Flows

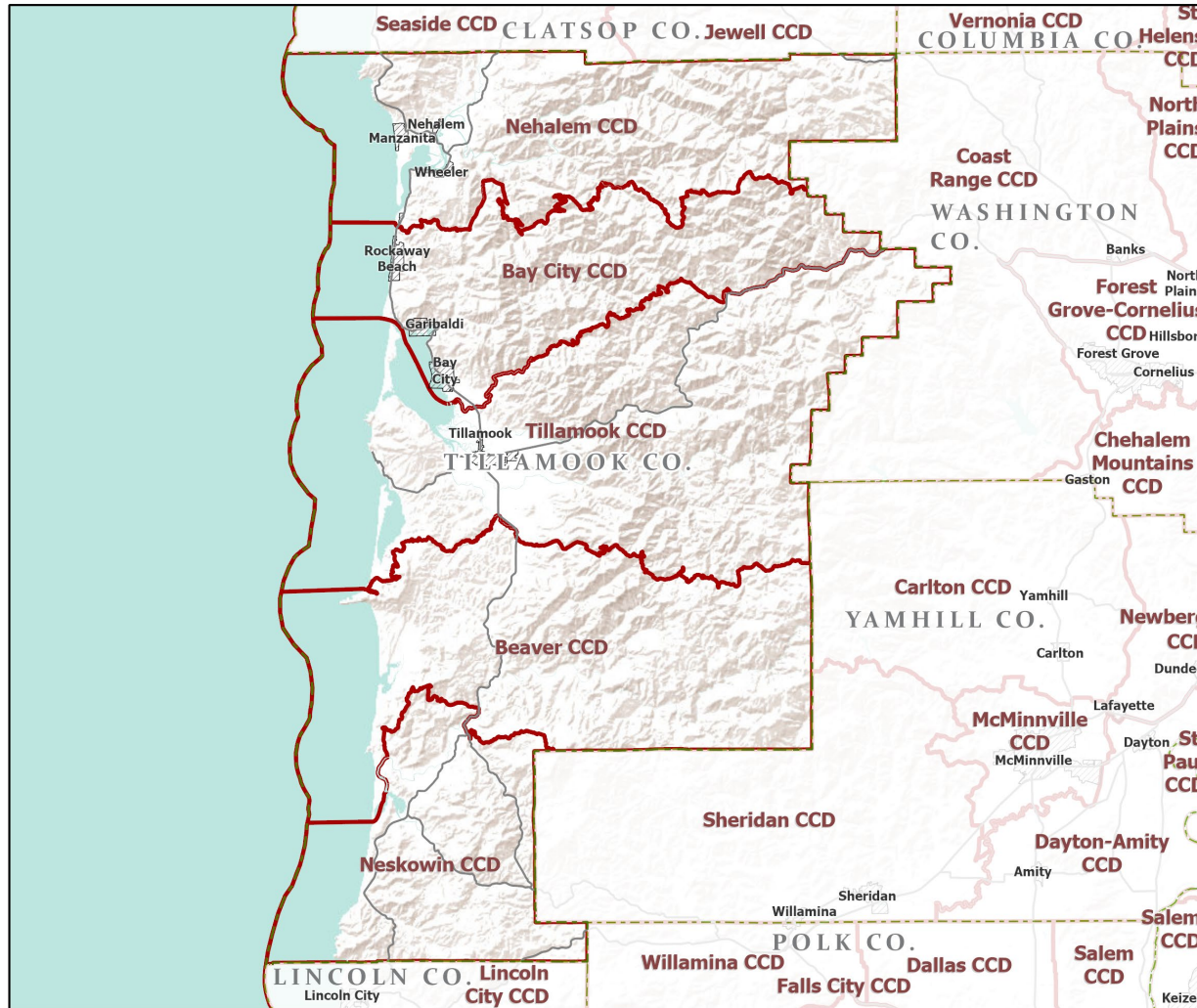


Explore sub-county commute flows in [this interactive map](#).

Jobs Counts by Counties Where Workers are Employed - All Jobs

	2018	
	Count	Share
All Counties	11,330	100.0%
Tillamook County, OR	6,380	56.3%
Multnomah County, OR	1,031	9.1%
Washington County, OR	742	6.5%
Marion County, OR	493	4.4%
Clackamas County, OR	381	3.4%
Clatsop County, OR	370	3.3%
Lincoln County, OR	301	2.7%
Yamhill County, OR	195	1.7%
Clark County, WA	174	1.5%
Lane County, OR	159	1.4%
All Other Locations	1,104	9.7%

County Subdivisions (CCDs): Tillamook County



- Counties
- Incorporated Cities
- Highways
- County Subdivisions (CCDs)



Portland State University,
Population Research Center,
May 2021.
www.pdx.edu/prc

Sources: Esri, USGS, NOAA
State of Oregon GEO;
Oregon Dept. of
Transportation.

0 40
Miles

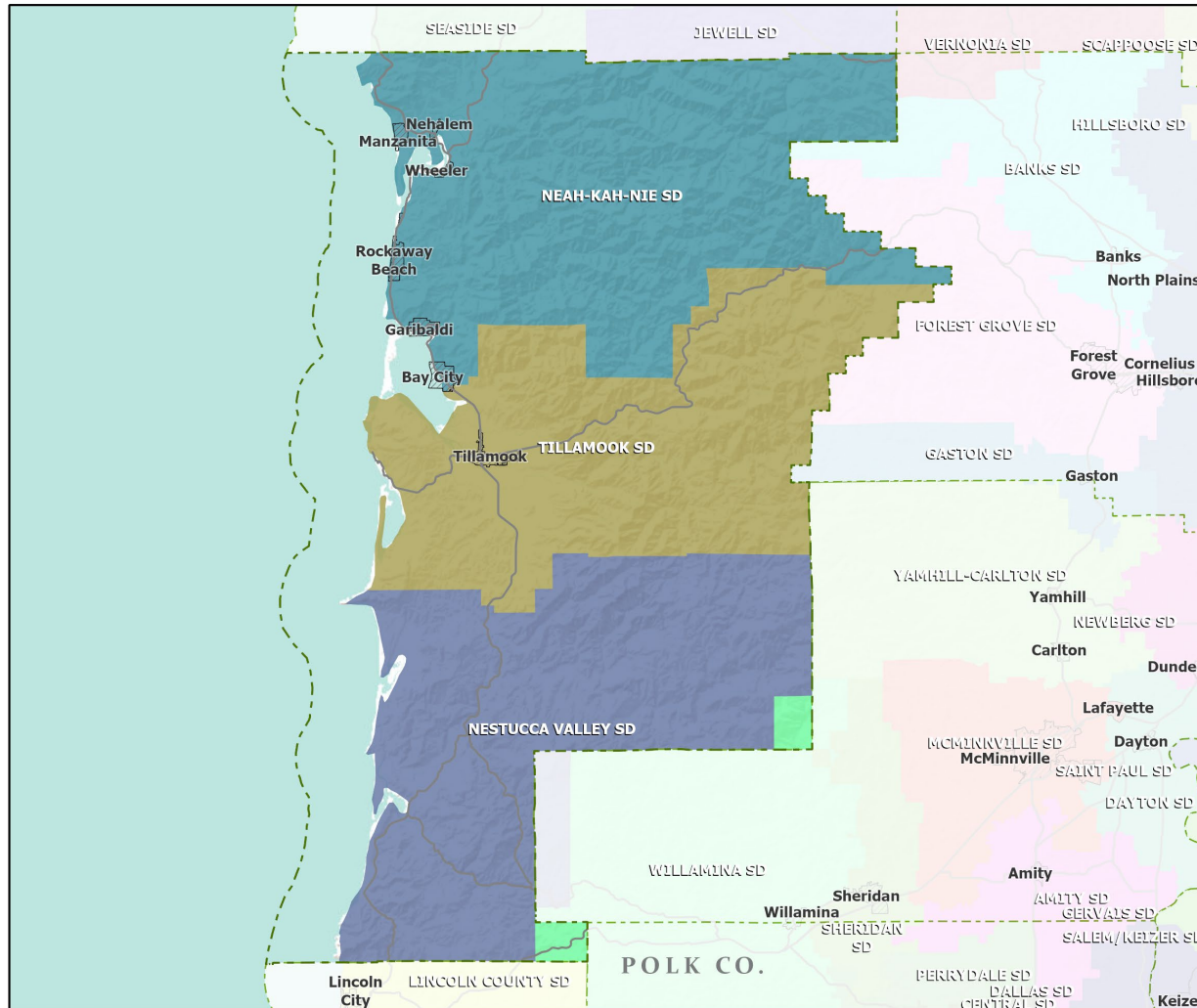
Tillamook County Employment by Sector by Census County Division

Sector	Oregon	County Total	Bay City CCD	Beaver CCD	Nehalem CCD	Neskowin CCD	Tillamook CCD
Total, All Jobs*	1,904,601	9,568	1,433	693	796	584	6,062
Goods-Producing	18.6%	30.3%	34.9%	32.3%	8.8%	24.1%	32.3%
Natural Resources and Mining	2.7%	8.7%	5.2%	23.7%	2.6%	12.3%	8.3%
Construction	5.9%	4.8%	4.4%	8.7%	4.1%	9.1%	4.2%
Manufacturing	10.0%	16.7%	25.3%	0.0%	2.0%	2.7%	19.8%
Service Providing	81.4%	69.7%	65.1%	67.7%	91.2%	75.9%	67.7%
Trade, Transportation, and Utilities	18.6%	15.7%	8.5%	11.7%	20.9%	17.6%	17.0%
Information	2.0%	0.9%	0.0%	0.0%	0.6%	0.2%	1.4%
Financial Activities	4.6%	2.0%	0.6%	0.0%	2.9%	3.9%	2.3%
Professional and Business Services	13.4%	5.1%	2.4%	8.9%	4.1%	4.3%	5.4%
Education and Health Services	23.1%	19.5%	16.3%	0.9%	16.7%	26.2%	22.2%
Leisure and Hospitality	11.4%	16.1%	24.5%	43.9%	35.4%	18.3%	8.1%
Other Services	4.2%	5.5%	9.0%	2.3%	7.4%	4.3%	4.8%
Public Administration	4.2%	5.0%	3.8%	0.0%	3.1%	1.0%	6.4%

Source: U.S. Census Bureau, LEHD Origin-Destination Employment Statistics, 2018 Q2

* Jobs covered by unemployment insurance and federal workers.

School Districts: Tillamook County



- Counties
- Incorporated Cities
- Highways

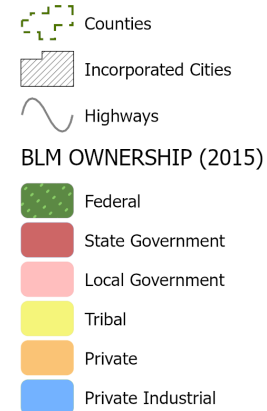
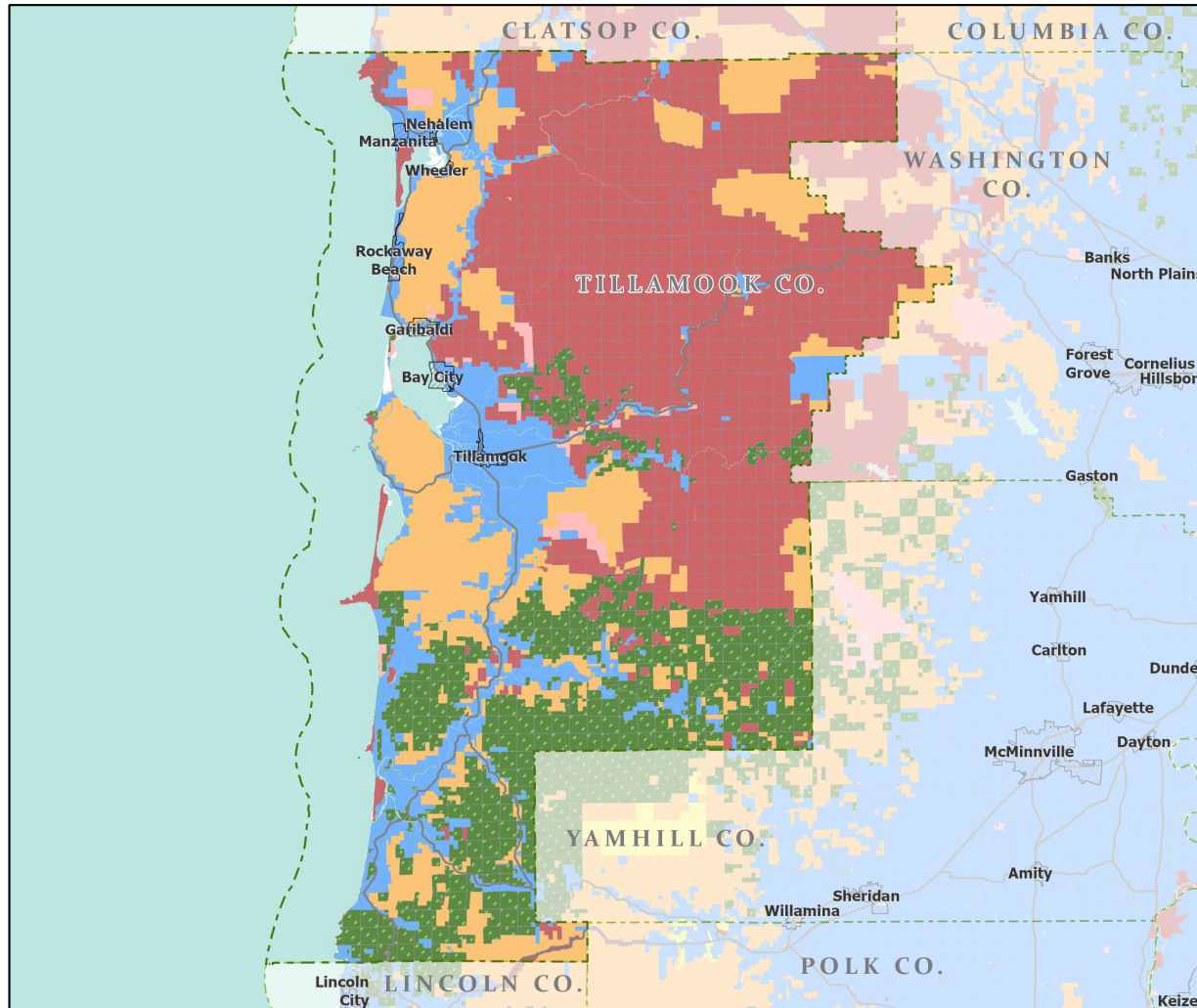


Portland State University,
Population Research Center,
May 2021.
www.pdx.edu/prc

Sources: Esri, USGS, NOAA
State of Oregon GEO;
Oregon Dept. of
Transportation.

0 40 Miles

Land Ownership: Tillamook County



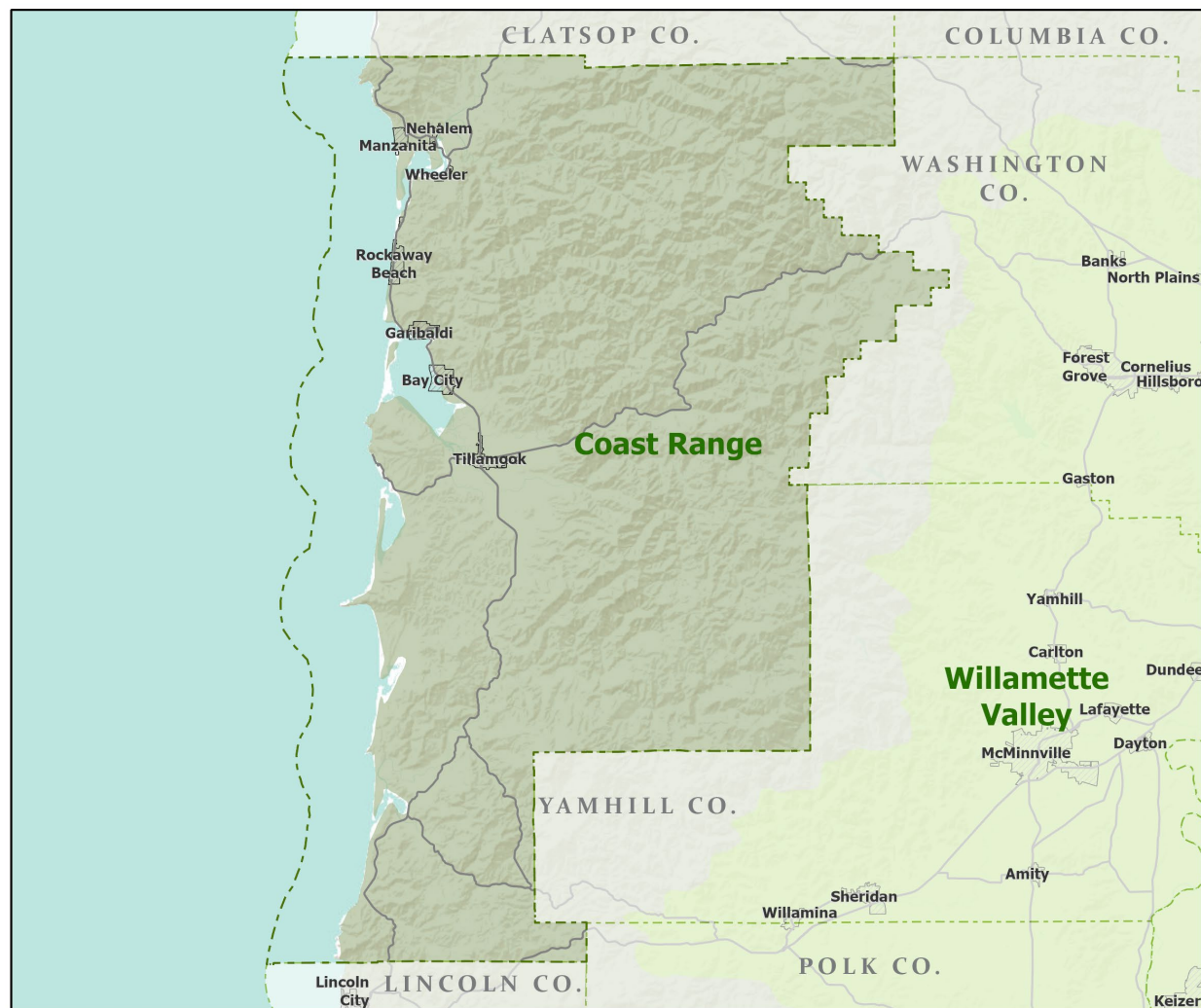
Portland State University,
Population Research Center,
May 2021.
www.pdx.edu/prc

Sources: Esri, USGS, NOAA

State of Oregon GEO;
Oregon Dept. of
Transportation; Bureau of
Land management.

0 40
Miles

Ecoregions: Tillamook County



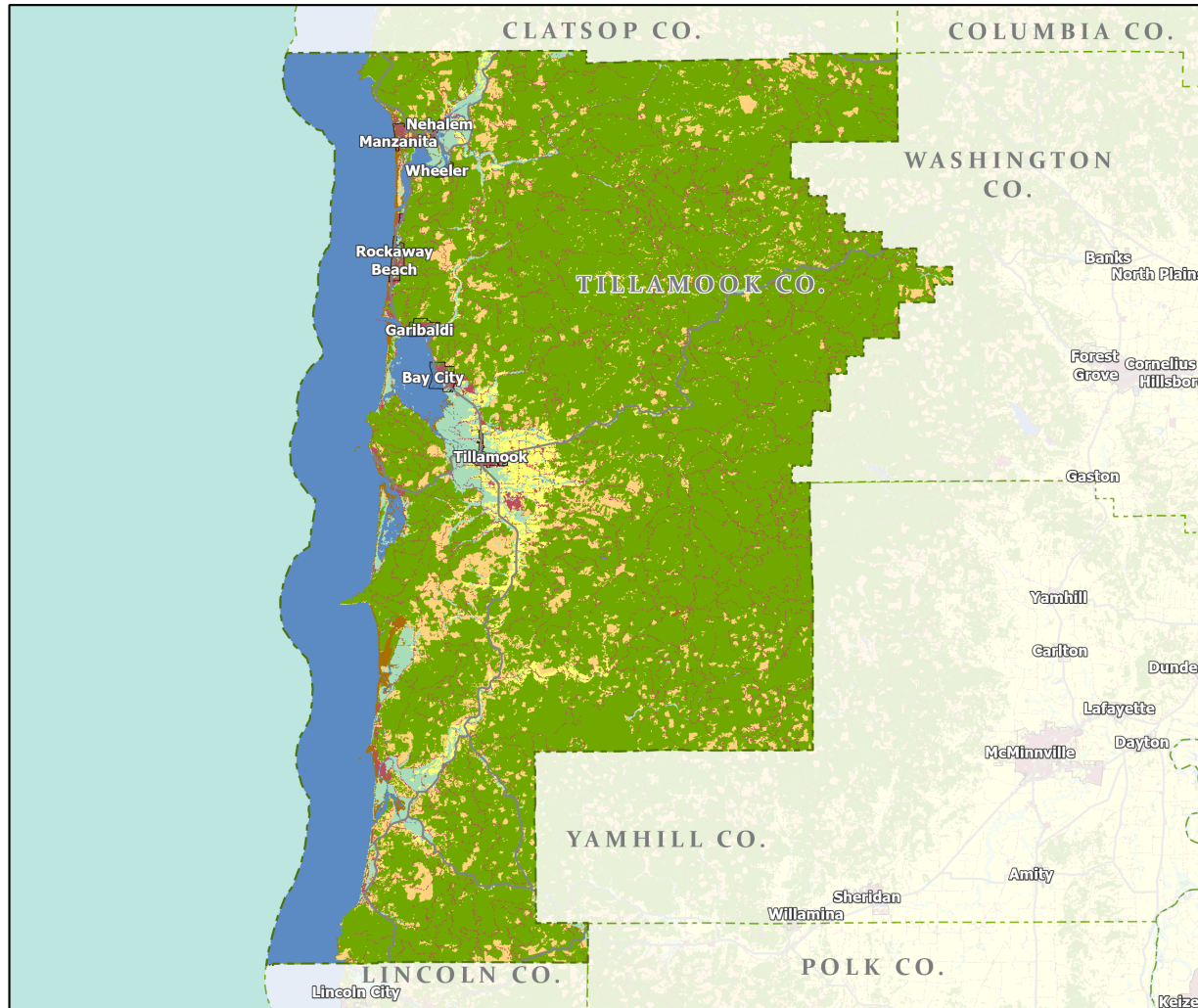
-  Counties
-  Incorporated Cities
-  Highways
- LEVEL III ECOREGIONS OF OREGON (2006)
-  Coast Range
-  Willamette Valley



Portland State University,
Population Research Center,
May 2021.
www.pdx.edu/prc

Sources: Esri, USGS, NOAA
State of Oregon GEO;
Oregon Dept. of
Transportation.

Land Cover: Tillamook County



Counties

Incorporated Cities

Highways

NATIONAL LAND COVER

Developed

Cultivated Crops/Pasture/Hay

Barren Land

Forest

Grasslands/Scrub/Sedge

Lichens/Moss

Wetlands

Perennial Snow/Ice

Open Water



Portland State University,
Population Research Center,
May 2021.
www.pdx.edu/prc

Sources: Esri, USGS, NOAA
State of Oregon GEO;
Oregon Dept. of
Transportation.