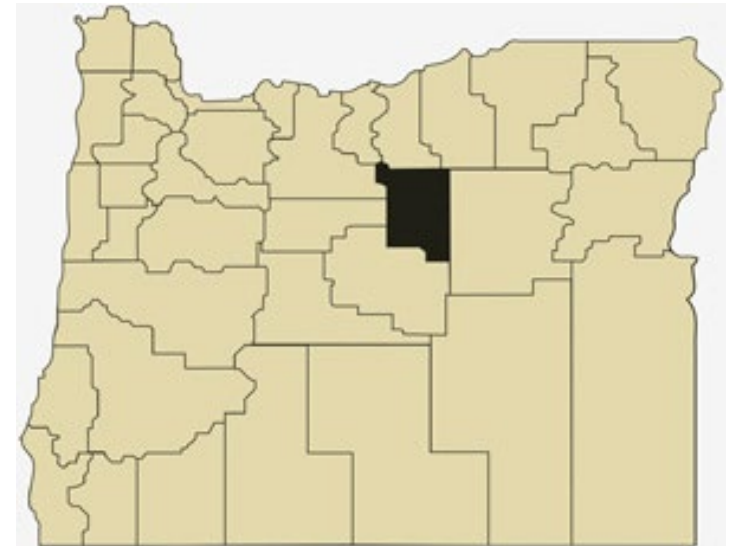


Wheeler County Overview

House and Senate Committees on Redistricting June 9, 2021

July 1, 2020 population estimate	1,440
Population rank	36th
Share of state population	<0.1%
Density (per square mile)	0.8
Density rank	35th
Area (square miles)	1,715
Area rank	20th
Share of state area	1.8%



Sources: PSU Population Research Center; Oregon Blue Book.

Highways: Wheeler County



- Counties
- Incorporated Cities
- Highways



Portland State University,
Population Research Center,
May 2021.
www.pdx.edu/prc

Sources: Esri, USGS, NOAA
State of Oregon GEO;
Oregon Dept. of
Transportation.

0 40 Miles

Population: Wheeler County



- Counties
- Incorporated Cities
- Highways
- 2010 POPULATION
 - 1 Dot = 25 persons

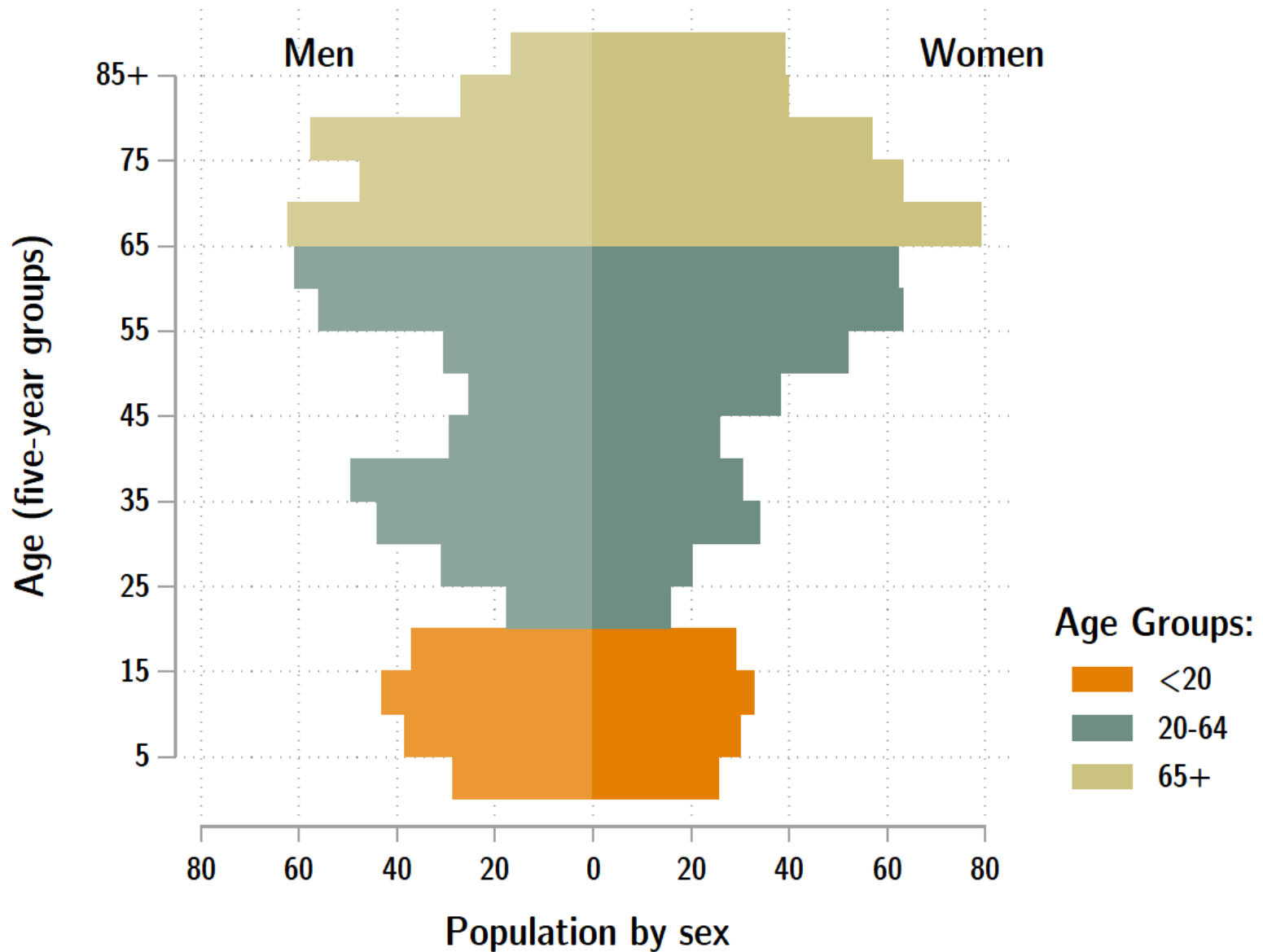


Portland State University,
Population Research Center,
May 2021.
www.pdx.edu/prc

Sources: Esri, USGS, NOAA
State of Oregon GEO;
Oregon Dept. of
Transportation.

0 40 Miles

Wheeler population by age & sex: 2020



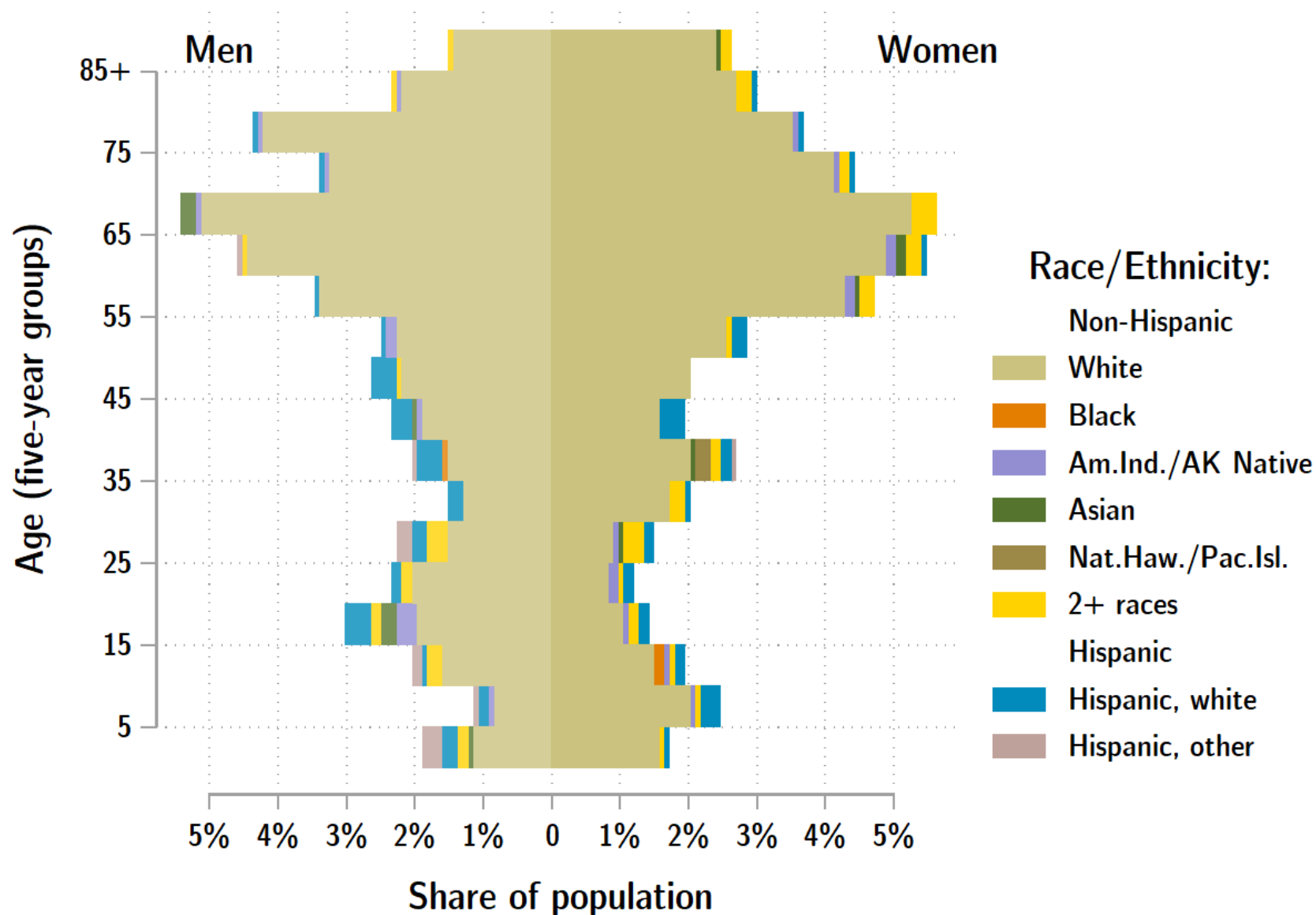
Source: Estimates by Population Research Center, PSU

Age Distribution, Wheeler County

Age Group	2020 Estimate	2020 Percent of Total	Oregon 2020 Percent of Total
Total population	1,440	100.0%	100.0%
Under age 5	54	3.8%	5.4%
Age 5 to 17	189	13.1%	14.9%
Age 18 to 64	707	49.1%	61.1%
Age 65 and over	489	34.0%	18.6%

Source: PSU Population Research Center July 1, 2020 Population Estimates

Wheeler County population by age & sex: 2019



Source: Estimates by US Census Bureau

Race and Ethnicity, Wheeler County

HISPANIC OR LATINO AND RACE	2010 Census	2010 Census Percent	2015-19 ACS Estimate	2015-19 ACS Percent	Oregon 2015-19 ACS Percent
Total population	1,441	100.0%	1,415	100.0%	100.0%
Hispanic or Latino	62	4.3%	122	8.6%*	13.0%
Not Hispanic or Latino	1,379	95.7%	1,293	91.4%*	87.0%
White alone	1,307	90.7%	1,235	87.3%	75.7%
Black or African American alone	0	0.0%	0	0.0%	1.8%
American Indian and Alaska Native alone	16	1.1%	9	0.6%	0.9%
Asian alone	8	0.6%	4	0.3%	4.3%
Native Hawaiian and Other Pacific Islander alone	2	0.1%	2	0.1%	0.4%
Some Other Race alone	5	0.3%	0	0.0%	0.1%
Two or More Races	41	2.8%	43	3.0%	3.7%

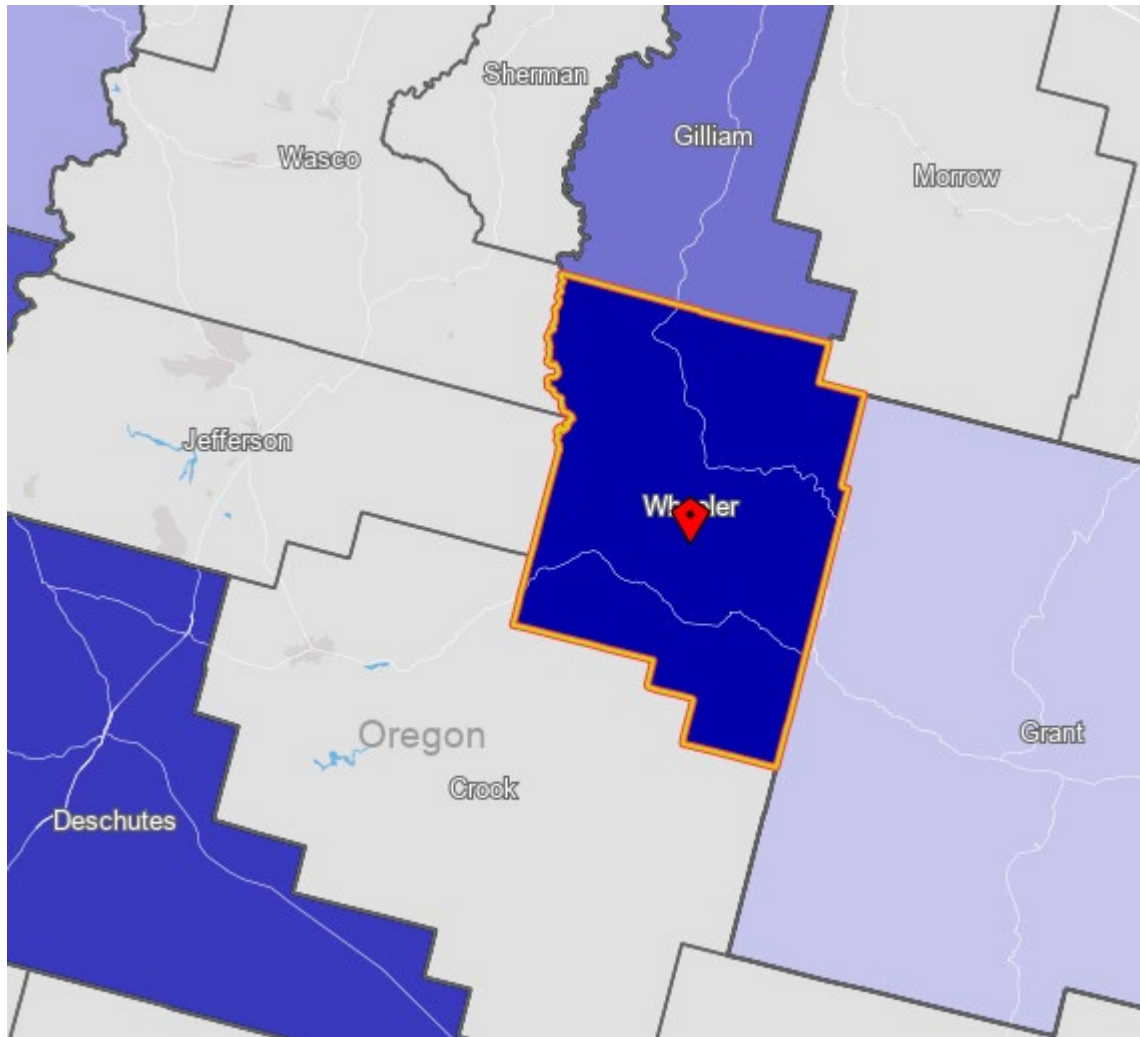
RACE ALONE OR IN COMBINATION WITH ONE OR MORE OTHER RACES**	2010 Census	2010 Census Percent	2015-19 ACS Estimate	2015-19 ACS Percent	Oregon 2015-19 ACS Percent
White	1,376	95.5%	1,372	97.0%	88.8%
Black or African American	0	0.0%	0	0.0%	2.9%
American Indian and Alaska Native	51	3.5%	54	3.8%	3.1%
Asian	17	1.2%	5	0.4%*	6.0%
Native Hawaiian and Other Pacific Islander	3	0.2%	2	0.1%	0.8%
Some Other Race	38	2.6%	35	2.5%	3.6%

Source: U.S. Census Bureau, 2010 Census and 2019 5-year American Community Survey estimates.

* Difference between 2010 Census and 2015-19 ACS is statistically significant at the 90% confidence level.

** Total may add to more than 100% due to persons identifying as more than one race.

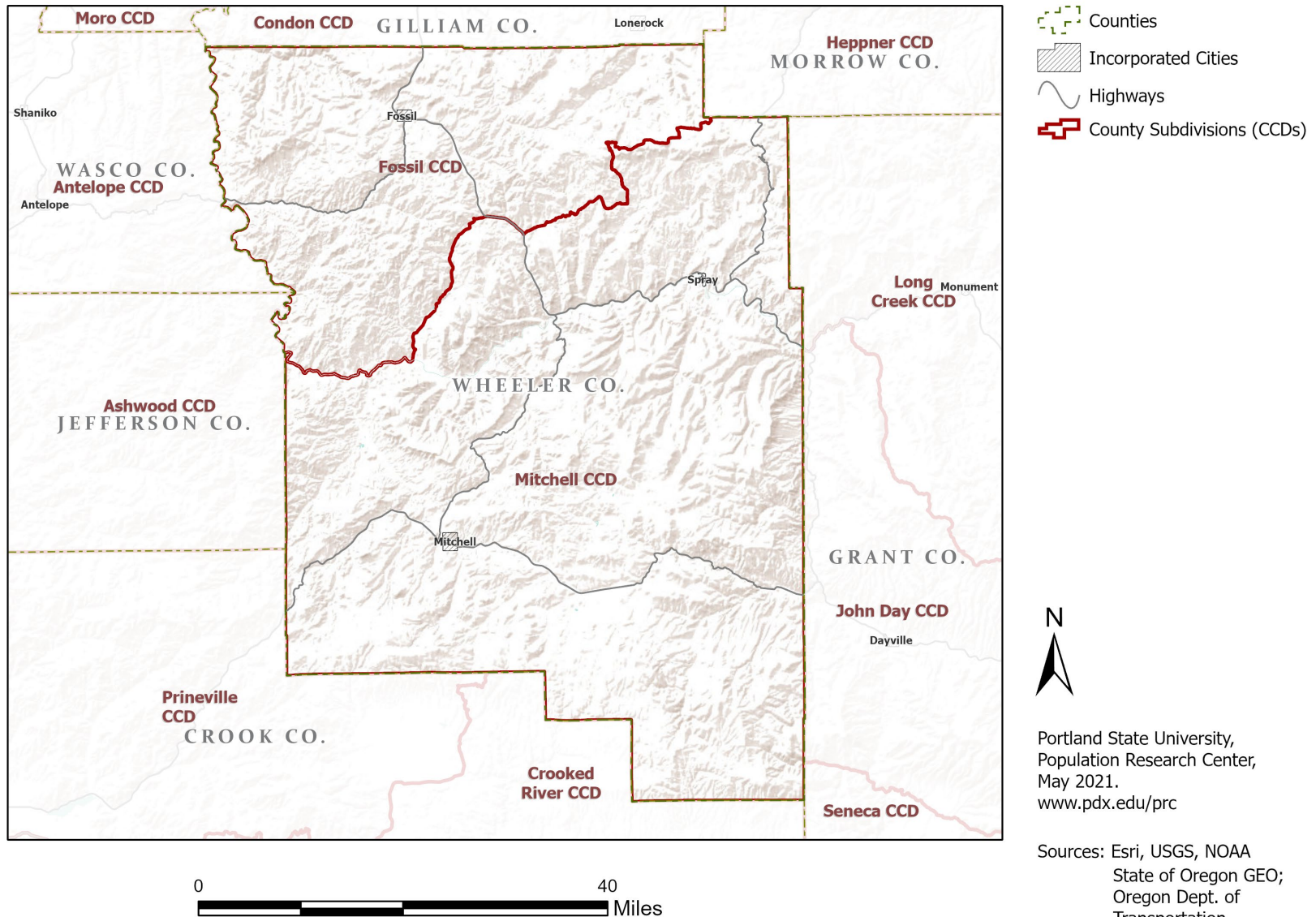
Wheeler County Commute Flows



Jobs Counts by Counties Where Workers are Employed - All Jobs

2018		
	Count	Share
All Counties	526	100.0%
Wheeler County, OR	207	39.4%
Multnomah County, OR	45	8.6%
Deschutes County, OR	28	5.3%
Marion County, OR	21	4.0%
Gilliam County, OR	20	3.8%
Yakima County, WA	20	3.8%
Washington County, OR	18	3.4%
Clackamas County, OR	16	3.0%
Grant County, OR	15	2.9%
Benton County, WA	14	2.7%
All Other Locations	122	23.2%

County Subdivisions (CCDs): Wheeler County



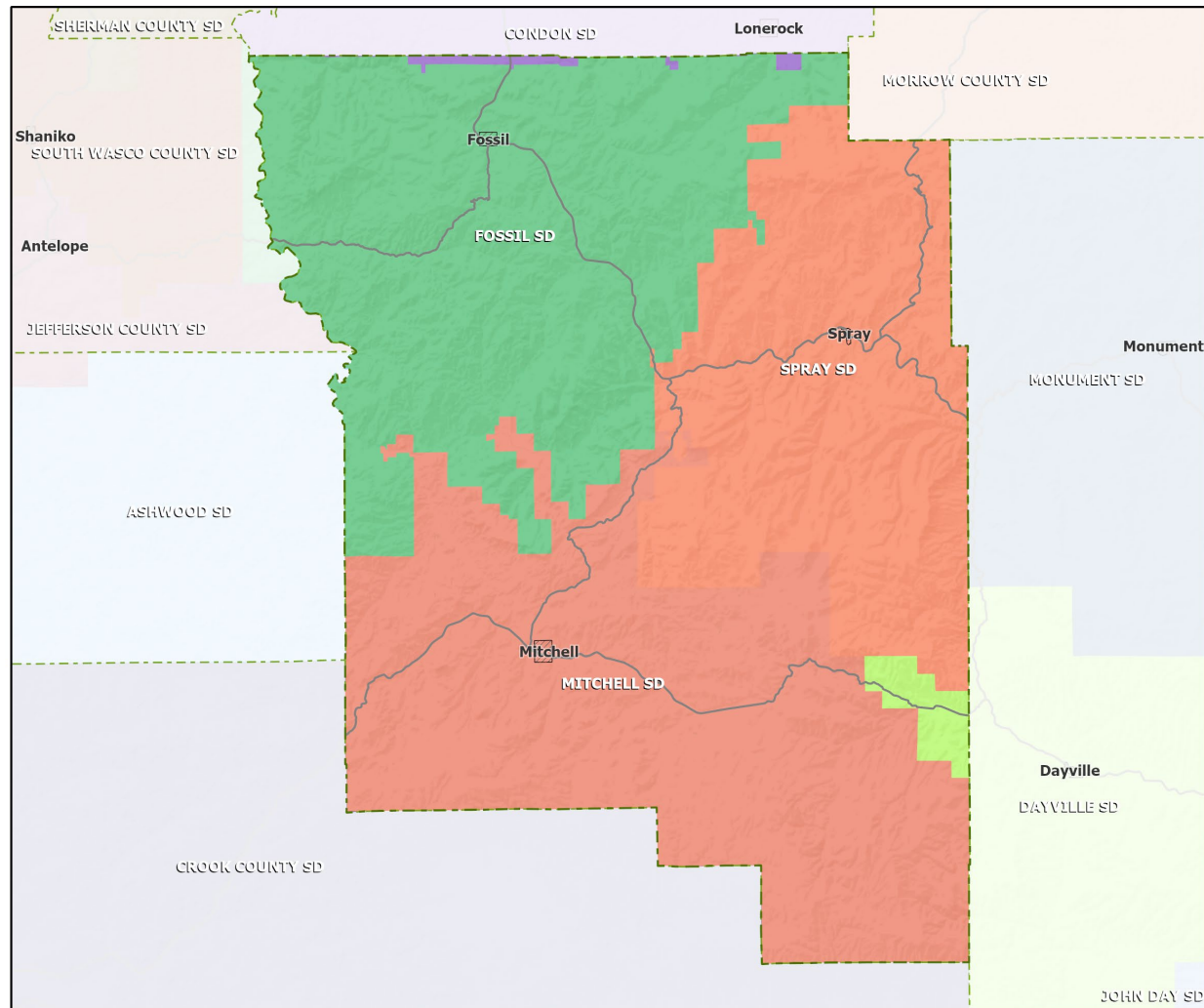
Wheeler County Employment by Sector by Census County Division

Sector	Oregon	County Total	Fossil CCD	Mitchell CCD
Total, All Jobs*	1,904,601	359	181	178
Goods-Producing	18.6%	20.6%	5.0%	36.5%
Natural Resources and Mining	2.7%	16.2%	1.7%	30.9%
Construction	5.9%	3.6%	3.3%	3.9%
Manufacturing	10.0%	0.8%	0.0%	1.7%
Service Providing	81.4%	79.4%	95.0%	63.5%
Trade, Transportation, and Utilities	18.6%	14.5%	17.1%	11.8%
Information	2.0%	0.0%	0.0%	0.0%
Financial Activities	4.6%	1.4%	2.8%	0.0%
Professional and Business Services	13.4%	1.1%	0.0%	2.2%
Education and Health Services	23.1%	35.9%	42.5%	29.2%
Leisure and Hospitality	11.4%	7.5%	11.6%	3.4%
Other Services	4.2%	4.5%	0.6%	8.4%
Public Administration	4.2%	14.5%	20.4%	8.4%

Source: U.S. Census Bureau, LEHD Origin-Destination Employment Statistics, 2018 Q2

* Jobs covered by unemployment insurance and federal workers.

School Districts: Wheeler County



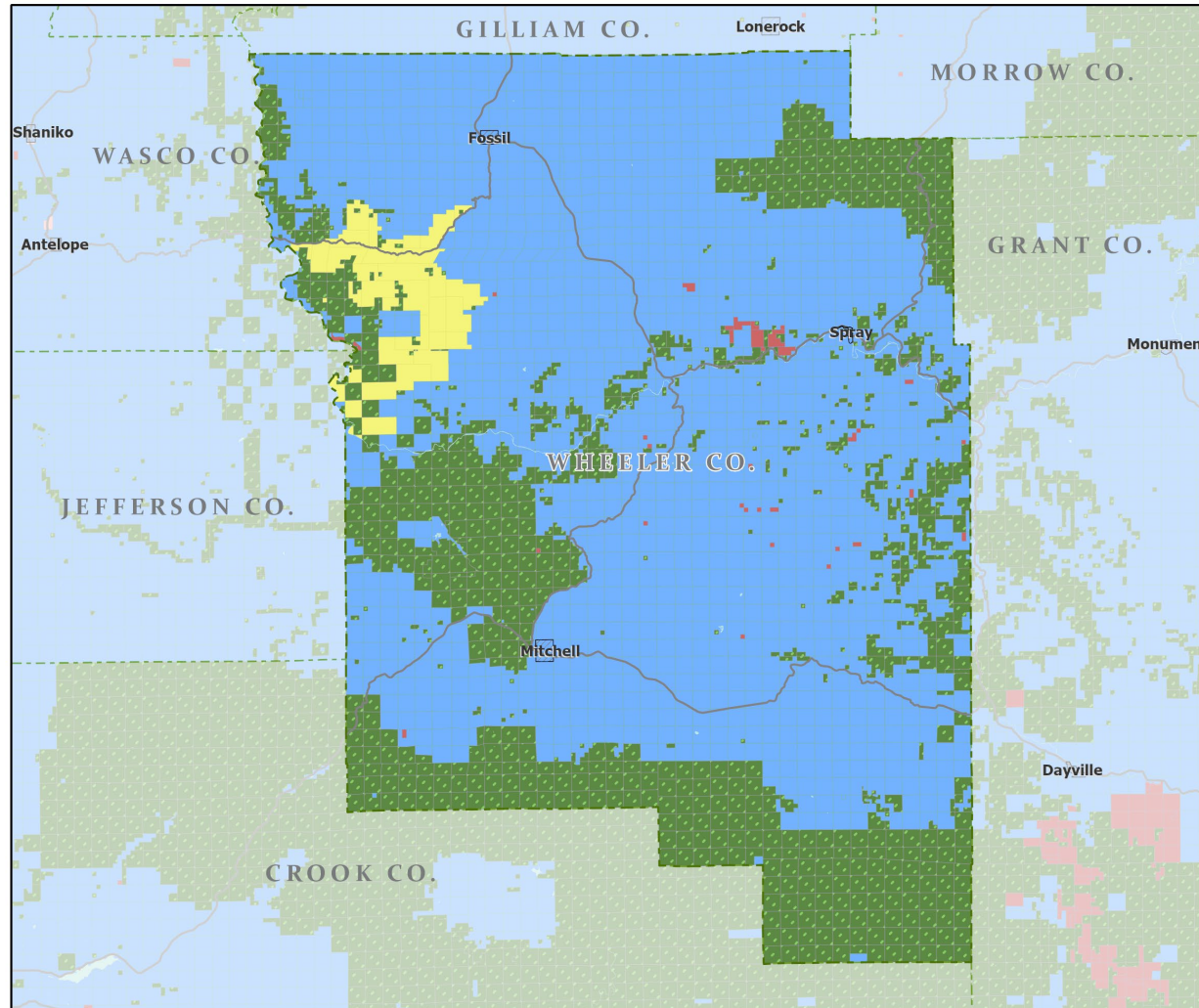
- Counties
- Incorporated Cities
- Highways



Portland State University,
Population Research Center,
May 2021.
www.pdx.edu/prc

Sources: Esri, USGS, NOAA
State of Oregon GEO;
Oregon Dept. of
Transportation.

Land Ownership: Wheeler County



Portland State University,
Population Research Center,
May 2021.
www.pdx.edu/prc

Sources: Esri, USGS, NOAA

State of Oregon GEO;
Oregon Dept. of
Transportation; Bureau of
Land management.



Ecoregions: Wheeler County



- Counties
- Incorporated Cities
- Highways
- LEVEL III ECOREGIONS OF OREGON (2006)
 - Blue Mountains
 - Columbia Plateau

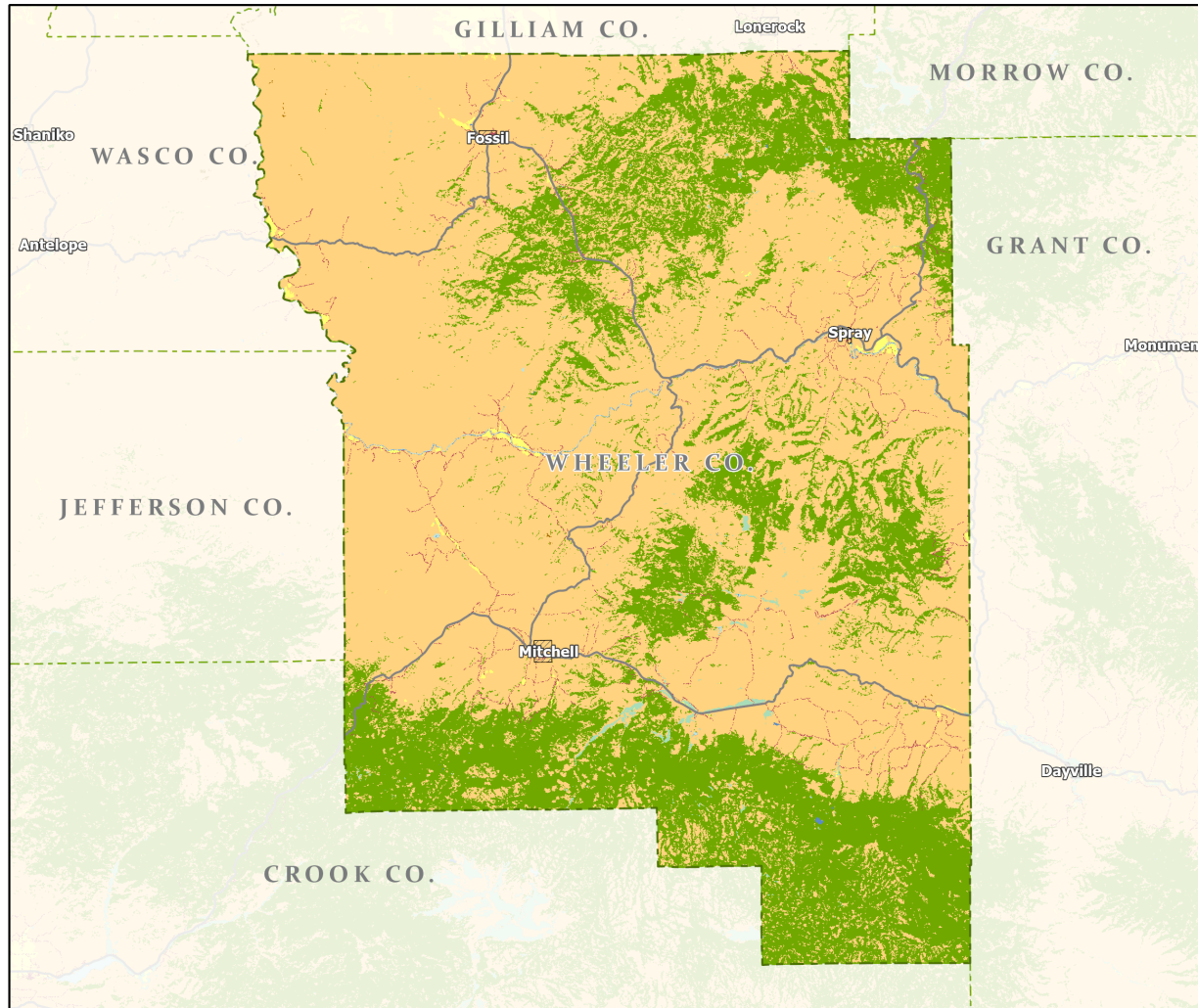


Portland State University,
Population Research Center,
May 2021.
www.pdx.edu/prc

Sources: Esri, USGS, NOAA
State of Oregon GEO;
Oregon Dept. of
Transportation.

0 40 Miles

Land Cover: Wheeler County



- Counties
- Incorporated Cities
- Highways

NATIONAL LAND COVER

- Developed
- Cultivated Crops/Pasture/Hay
- Barren Land
- Forest
- Grasslands/Scrub/Sedge
- Lichens/Moss
- Wetlands
- Perennial Snow/Ice
- Open Water



Portland State University,
Population Research Center,
May 2021.
www.pdx.edu/prc

Sources: Esri, USGS, NOAA
State of Oregon GEO;
Oregon Dept. of
Transportation.

0 40 Miles