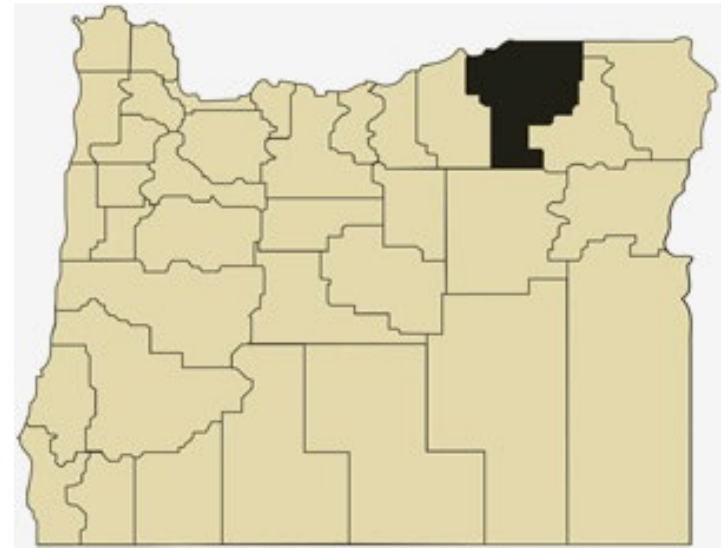


Umatilla County Overview

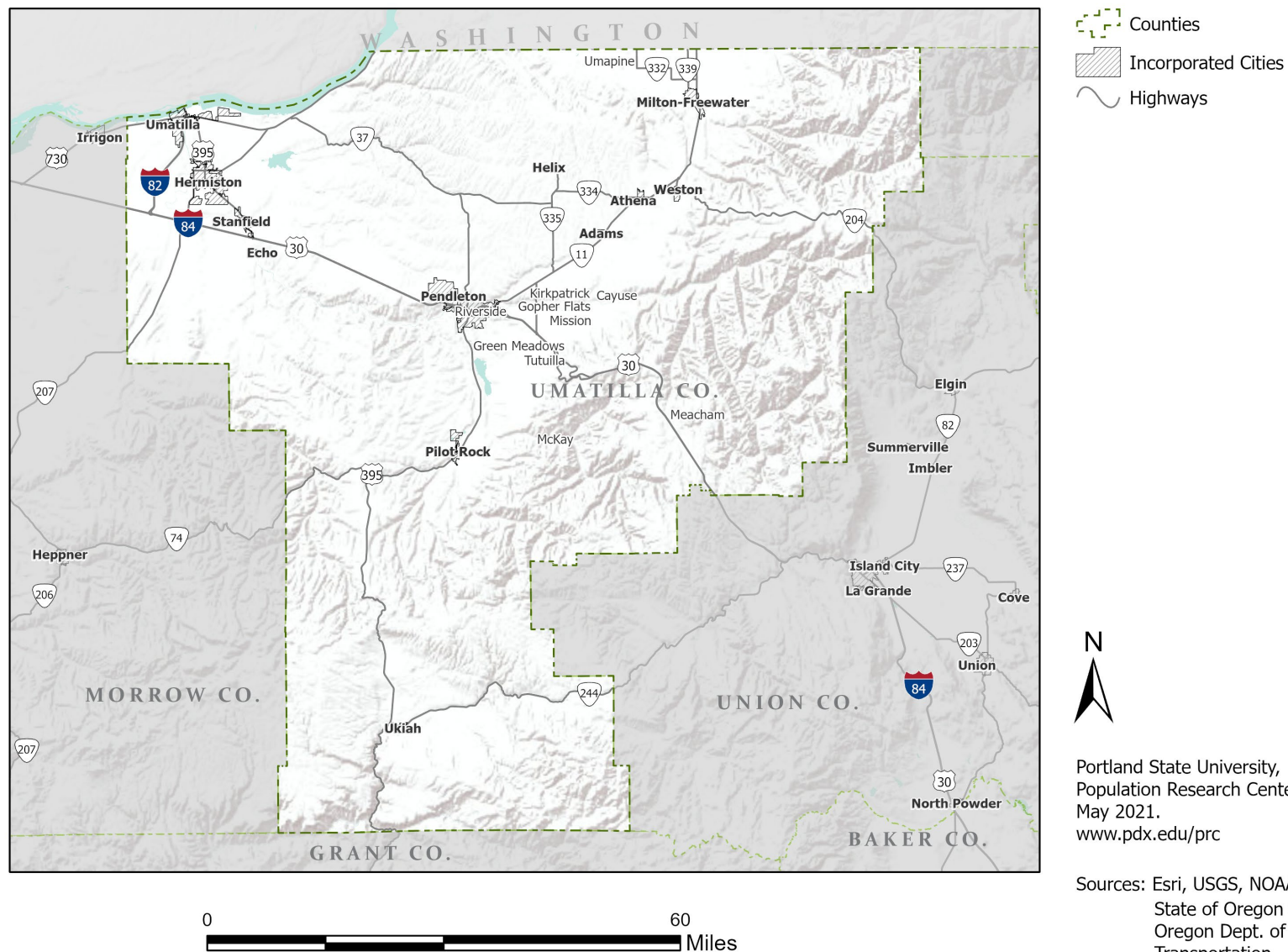
House and Senate Committees on Redistricting June 9, 2021

July 1, 2020 population estimate	81,495
Population rank	14th
Share of state population	1.9%
Density (per square mile)	25.2
Density rank	18th
Area (square miles)	3,231
Area rank	8th
Share of state area	3.3%



Sources: PSU Population Research Center; Oregon Blue Book.

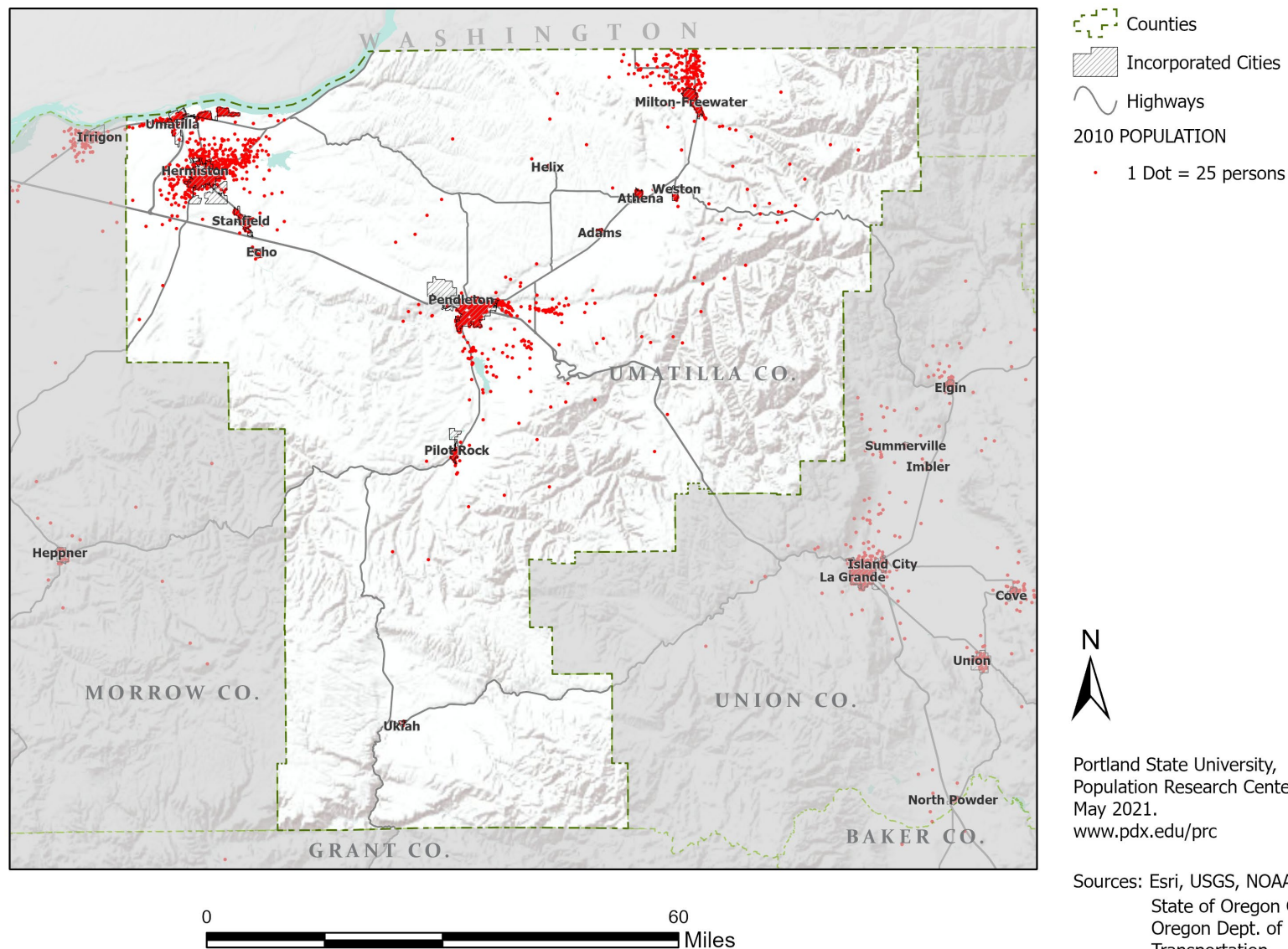
Highways: Umatilla County



Portland State University,
Population Research Center,
May 2021.
www.pdx.edu/prc

Sources: Esri, USGS, NOAA
State of Oregon GEO;
Oregon Dept. of
Transportation.

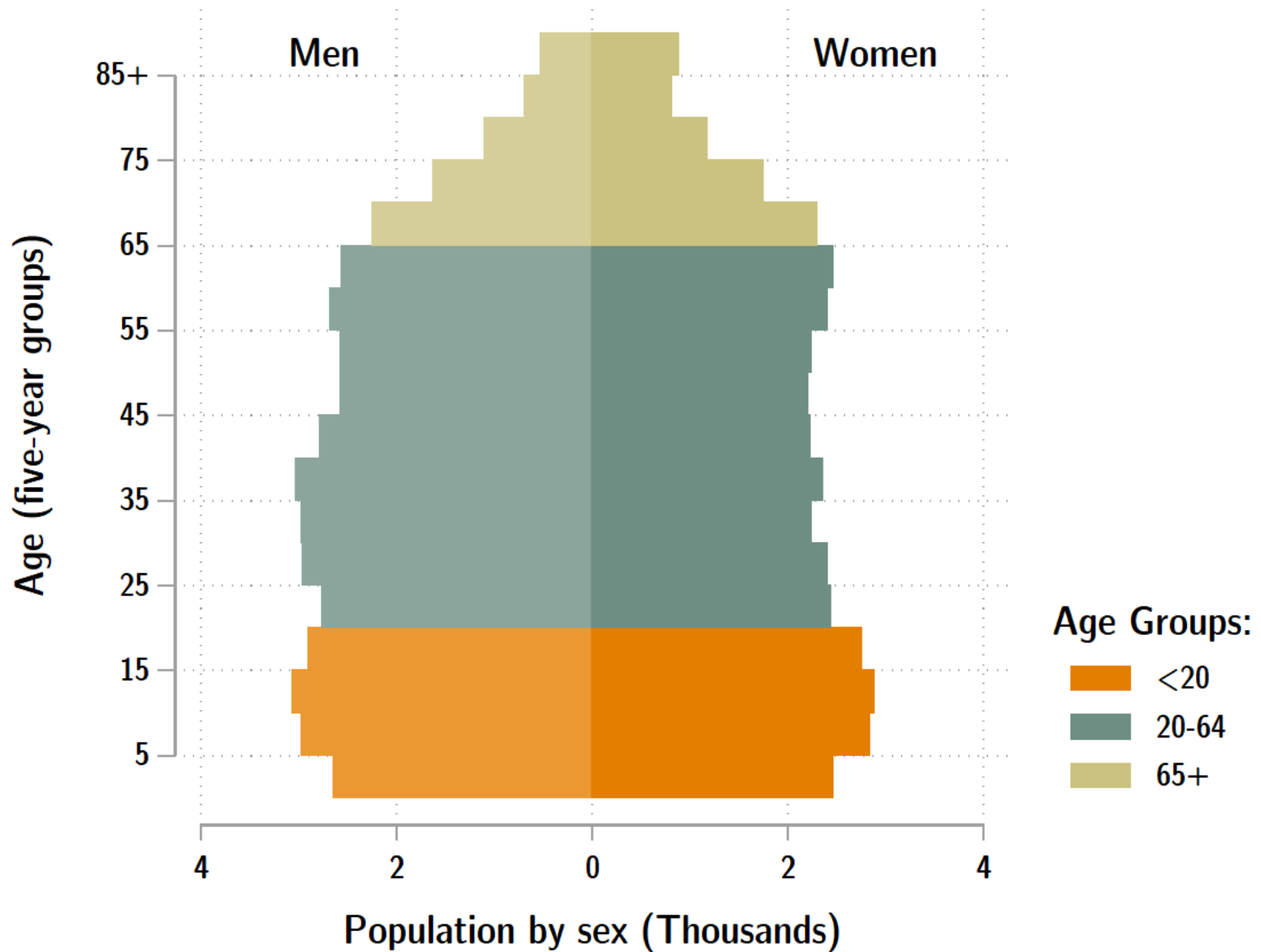
Population: Umatilla County



Portland State University,
Population Research Center,
May 2021.
www.pdx.edu/prc

Sources: Esri, USGS, NOAA
State of Oregon GEO;
Oregon Dept. of
Transportation.

Umatilla population by age & sex: 2020



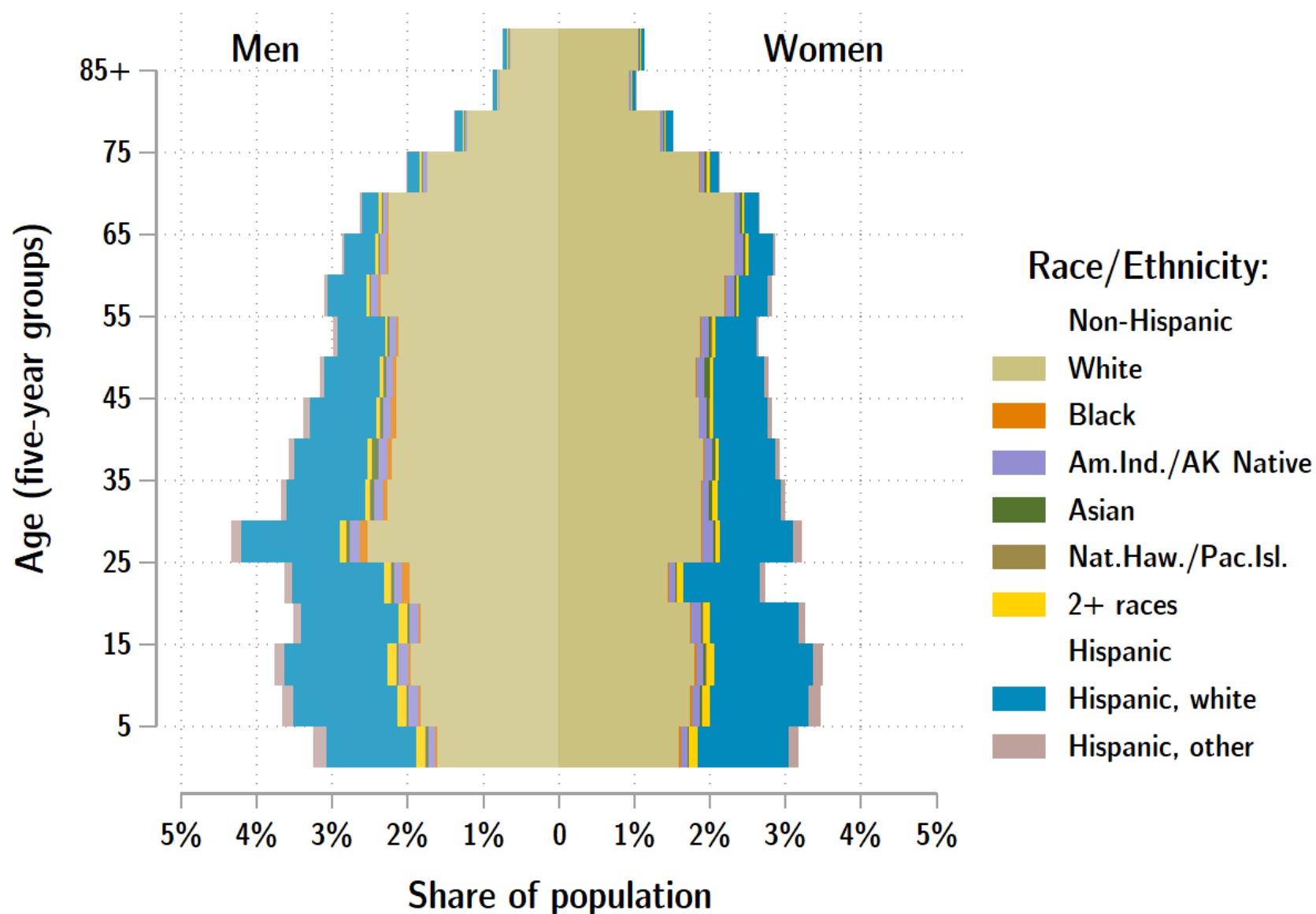
Source: Estimates by Population Research Center, PSU

Age Distribution, Umatilla County

Age Group	2020 Estimate	2020 Percent of Total	Oregon 2020 Percent of Total
Total population	26,840	100.0%	100.0%
Under age 5	1,579	5.9%	5.4%
Age 5 to 17	4,477	16.7%	14.9%
Age 18 to 64	14,747	54.9%	61.1%
Age 65 and over	6,038	22.5%	18.6%

Source: PSU Population Research Center July 1, 2020 Population Estimates

Umatilla County population by age & sex: 2019



Source: Estimates by US Census Bureau

Race and Ethnicity, Umatilla County

	2010 Census	2010 Census Percent	2015-19 ACS Estimate	2015-19 ACS Percent	Oregon 2015-19 ACS Percent
HISPANIC OR LATINO AND RACE					
Total population	75,889	100.0%	77,129	100.0%	100.0%
Hispanic or Latino	18,107	23.9%	20,665	26.8%*	13.0%
Not Hispanic or Latino	57,782	76.1%	56,464	73.2%*	87.0%
White alone	52,691	69.4%	50,691	65.7%*	75.7%
Black or African American alone	557	0.7%	721	0.9%*	1.8%
American Indian and Alaska Native alone	2,383	3.1%	1,915	2.5%*	0.9%
Asian alone	626	0.8%	769	1.0%	4.3%
Native Hawaiian and Other Pacific Islander alone	95	0.1%	199	0.3%*	0.4%
Some Other Race alone	55	0.1%	240	0.3%	0.1%
Two or More Races	1,375	1.8%	1,929	2.5%*	3.7%

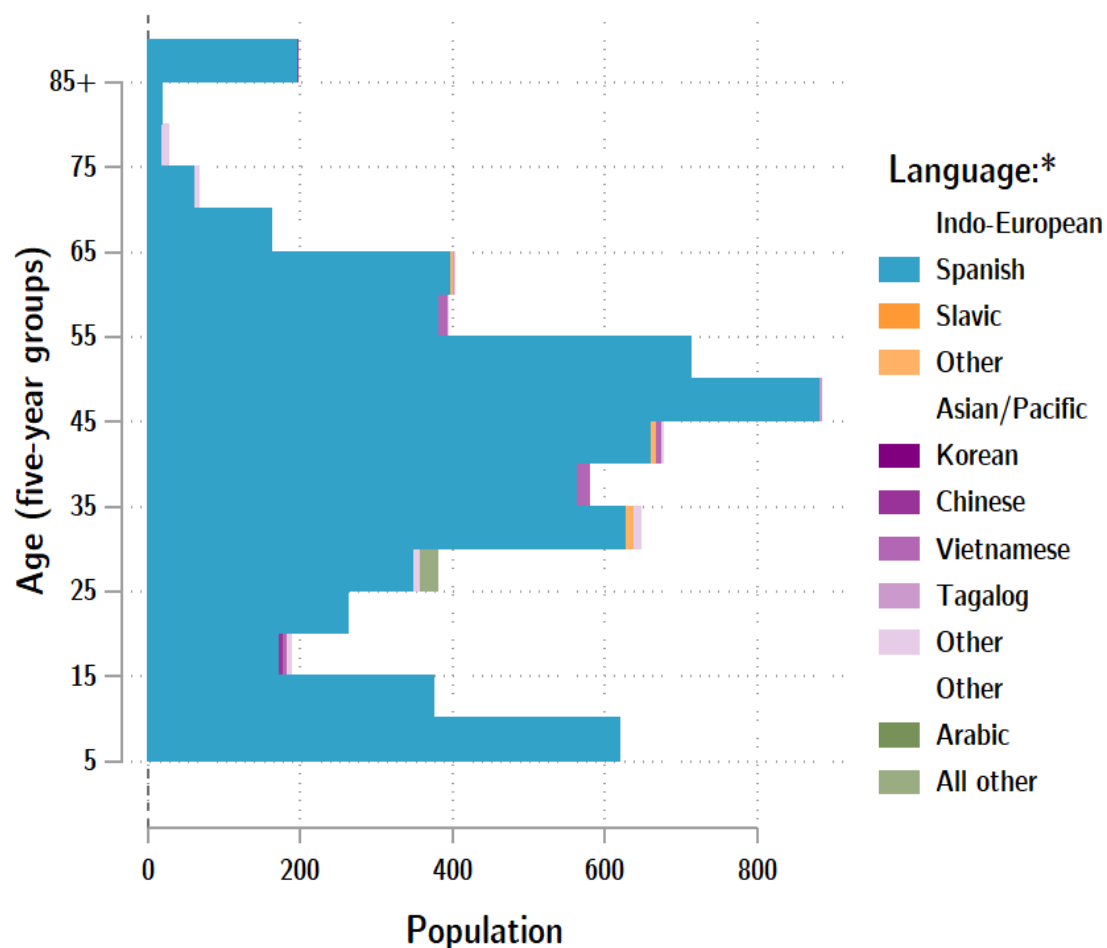
	2010 Census	2010 Census Percent	2015-19 ACS Estimate	2015-19 ACS Percent	Oregon 2015-19 ACS Percent
RACE ALONE OR IN COMBINATION WITH ONE OR MORE OTHER RACES**					
White	62,116	81.9%	68,961	89.4%*	88.8%
Black or African American	910	1.2%	1,248	1.6%*	2.9%
American Indian and Alaska Native	3,768	5.0%	4,191	5.4%	3.1%
Asian	1,012	1.3%	1,363	1.8%*	6.0%
Native Hawaiian and Other Pacific Islander	210	0.3%	623	0.8%*	0.8%
Some Other Race	10,343	13.6%	4,147	5.4%*	3.6%

Source: U.S. Census Bureau, 2010 Census and 2019 5-year American Community Survey estimates.

* Difference between 2010 Census and 2015-19 ACS is statistically significant at the 90% confidence level.

** Total may add to more than 100% due to persons identifying as more than one race.

Umatilla County population by age & language: 2019



Language Spoken at Home Speak English less than "very well" Umatilla County

Languages	Estimate
Total Population Age 5 and Older	71,943
Speaking English less than "very well"	6,640
Spanish	6,469
Russian, Polish, or other Slavic languages	0
Other Indo-European languages	23
Korean	0
Chinese (incl. Cantonese and Mandarin)	7
Vietnamese	54
Tagalog (incl. Filipino)	7
Other Asian and Pacific Island languages	51
Arabic	0
Other languages	29

Source: U.S. Census Bureau American Community Survey 2019 5-year estimates, Table C16001.

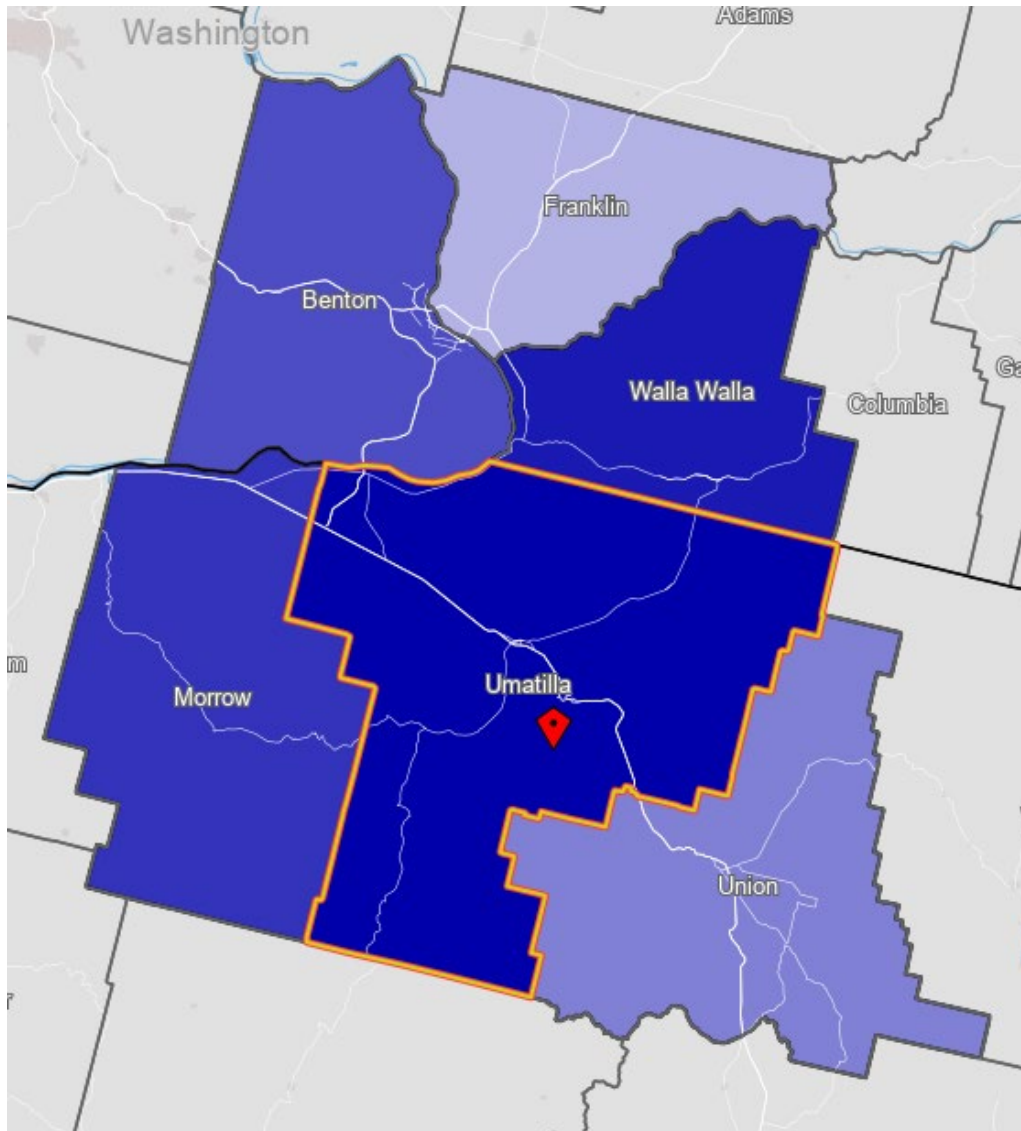
Note: * Languages for persons who speak English less than very well.

Source: ACS tables B16004, C16001, PUMS; PEP estimates; Analysis by PRC, PSU

[Link to Table C16001](#) for all counties, including margins of error.

[Visualization](#) of language data by census tract within county.

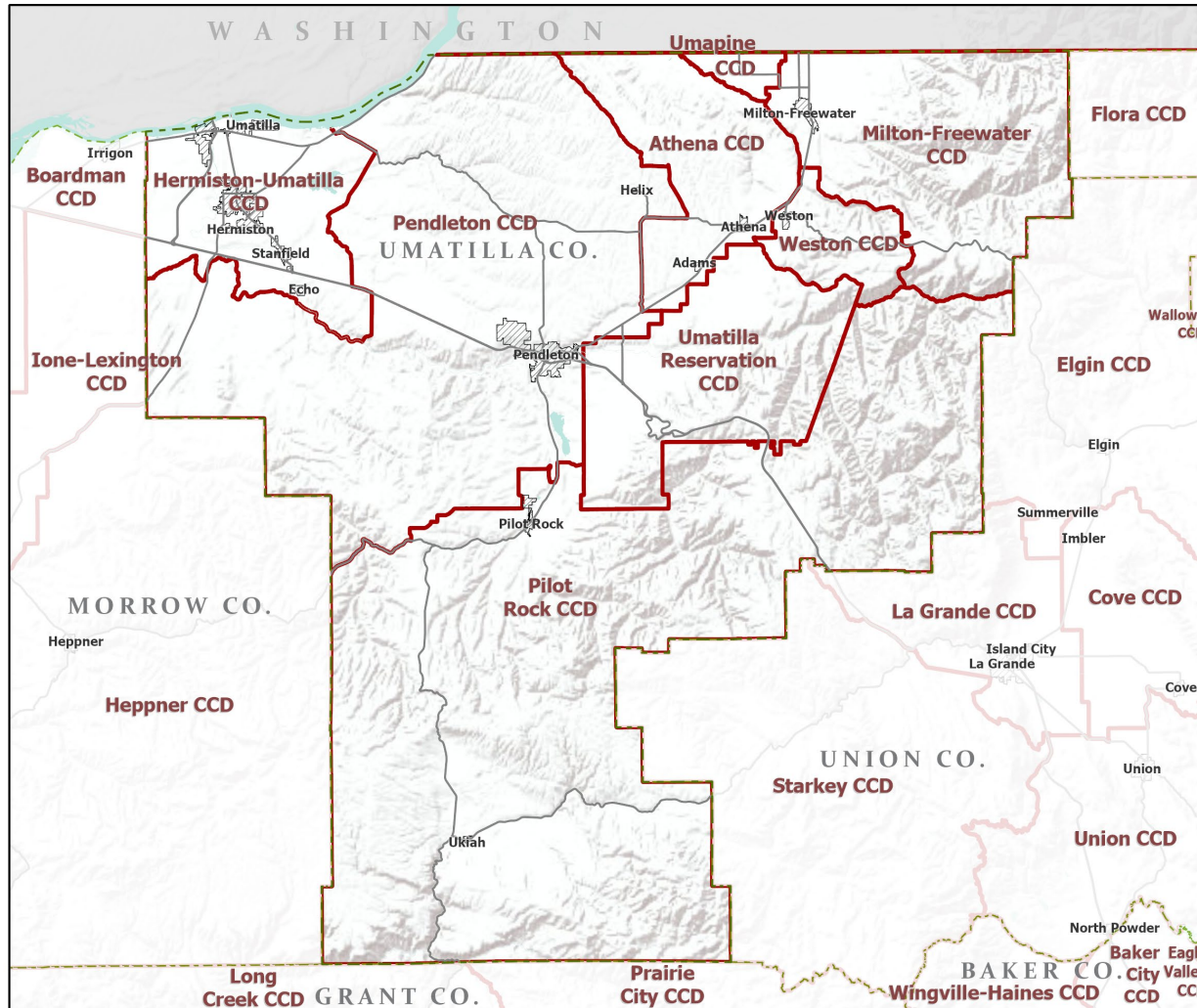
Umatilla County Commute Flows



Jobs Counts by Counties Where Workers are Employed - All Jobs

2018		
	Count	Share
All Counties	31,966	100.0%
Umatilla County, OR	21,314	66.7%
Walla Walla County, WA	1,792	5.6%
Morrow County, OR	1,720	5.4%
Benton County, WA	1,080	3.4%
Multnomah County, OR	747	2.3%
Union County, OR	553	1.7%
Marion County, OR	432	1.4%
Franklin County, WA	381	1.2%
Deschutes County, OR	303	0.9%
Malheur County, OR	281	0.9%
All Other Locations	3,363	10.5%

County Subdivisions (CCDs): Umatilla County



- Counties
- Incorporated Cities
- Highways
- County Subdivisions (CCDs)



Portland State University,
Population Research Center,
May 2021.
www.pdx.edu/prc

Sources: Esri, USGS, NOAA
State of Oregon GEO;
Oregon Dept. of
Transportation.

Umatilla County Employment by Sector by Census County Division (1 of 2)

Sector	Oregon	County Total	Athena CCD	Hermiston- Umatilla CCD	Milton- Freewater CCD	Pendleton CCD
Total, All Jobs*	1,904,601	31,057	307	15,305	3,106	9,004
Goods-Producing	18.6%	25.7%	33.6%	27.8%	32.6%	19.2%
Natural Resources and Mining	2.7%	9.6%	16.9%	11.3%	23.8%	3.1%
Construction	5.9%	4.8%	3.3%	5.9%	3.8%	3.4%
Manufacturing	10.0%	11.2%	13.4%	10.6%	5.1%	12.7%
Service Providing	81.4%	74.3%	66.4%	72.2%	67.4%	80.8%
Trade, Transportation, and Utilities	18.6%	19.6%	11.4%	26.8%	11.8%	15.7%
Information	2.0%	1.3%	0.0%	2.0%	0.1%	1.1%
Financial Activities	4.6%	2.1%	2.3%	2.0%	1.9%	3.2%
Professional and Business Services	13.4%	6.5%	3.3%	5.6%	12.9%	5.3%
Education and Health Services	23.1%	20.6%	35.5%	19.4%	26.7%	24.3%
Leisure and Hospitality	11.4%	11.6%	1.6%	8.0%	7.6%	12.2%
Other Services	4.2%	3.4%	7.2%	3.4%	4.7%	3.6%
Public Administration	4.2%	9.2%	5.2%	5.0%	1.8%	15.4%

Continued on next slide

Source: U.S. Census Bureau, LEHD Origin-Destination Employment Statistics, 2018 Q2

* Jobs covered by unemployment insurance and federal workers.

Umatilla County Employment by Sector by Census County Division (2 of 2)

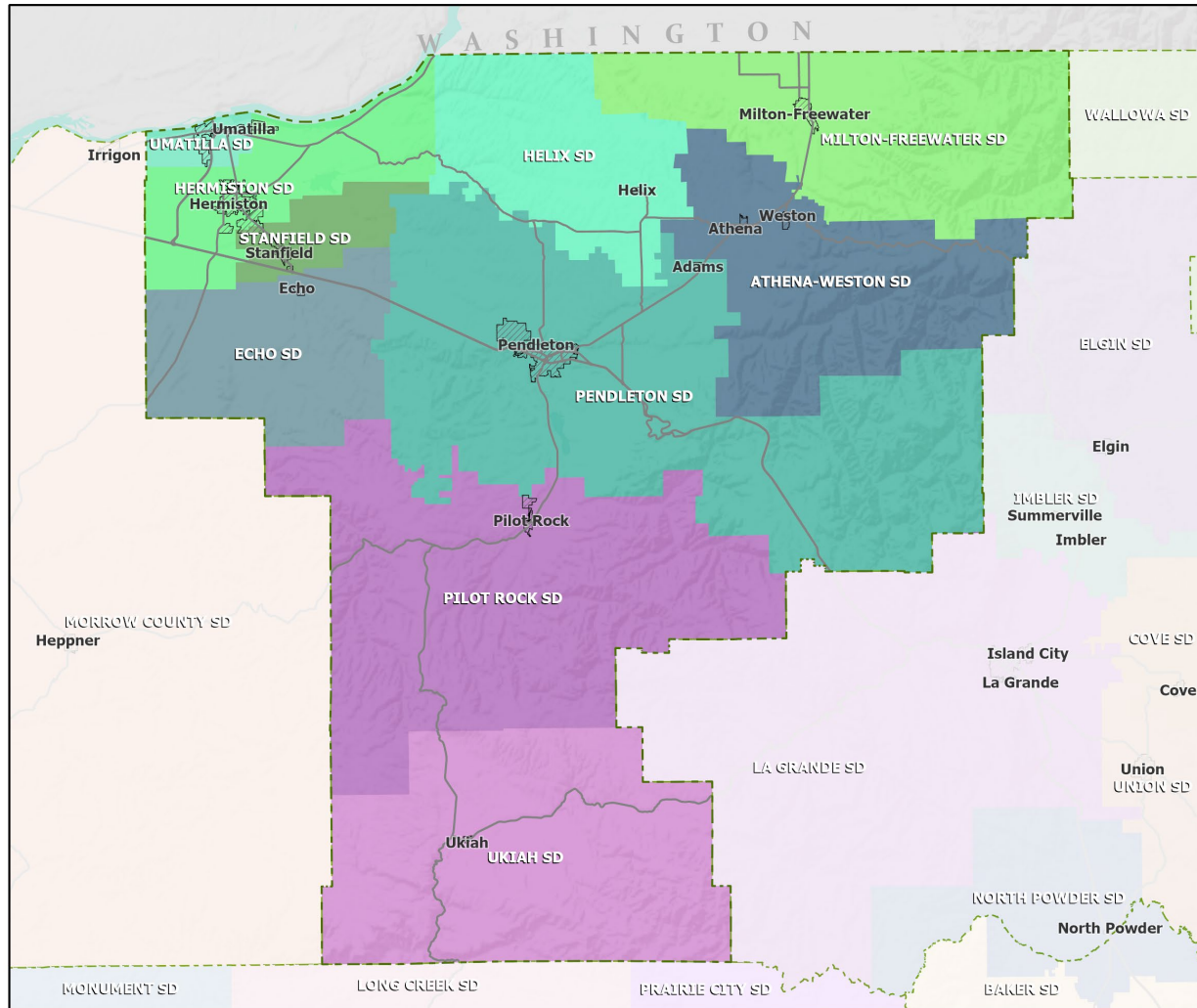
Continued from previous slide

Sector	Oregon	County Total	Pilot Rock CCD	Umapine CCD	Umatilla Reservation CCD	Weston CCD
Total, All Jobs*	1,904,601	31,057	310	225	2,304	496
Goods-Producing	18.6%	25.7%	32.3%	91.1%	6.1%	88.9%
Natural Resources and Mining	2.7%	9.6%	7.1%	64.4%	1.6%	0.0%
Construction	5.9%	4.8%	10.0%	10.7%	4.6%	1.2%
Manufacturing	10.0%	11.2%	15.2%	16.0%	0.0%	87.7%
Service Providing	81.4%	74.3%	67.7%	8.9%	93.9%	11.1%
Trade, Transportation, and Utilities	18.6%	19.6%	6.1%	4.4%	6.0%	0.2%
Information	2.0%	1.3%	0.0%	0.0%	0.0%	0.0%
Financial Activities	4.6%	2.1%	0.3%	0.0%	0.0%	0.0%
Professional and Business Services	13.4%	6.5%	7.7%	2.7%	10.0%	1.4%
Education and Health Services	23.1%	20.6%	27.4%	0.9%	8.7%	5.0%
Leisure and Hospitality	11.4%	11.6%	6.1%	0.0%	43.4%	2.6%
Other Services	4.2%	3.4%	3.9%	0.9%	1.6%	0.2%
Public Administration	4.2%	9.2%	16.1%	0.0%	24.2%	1.6%

Source: U.S. Census Bureau, LEHD Origin-Destination Employment Statistics, 2018 Q2

* Jobs covered by unemployment insurance and federal workers.

School Districts: Umatilla County



- Counties
- Incorporated Cities
- Highways

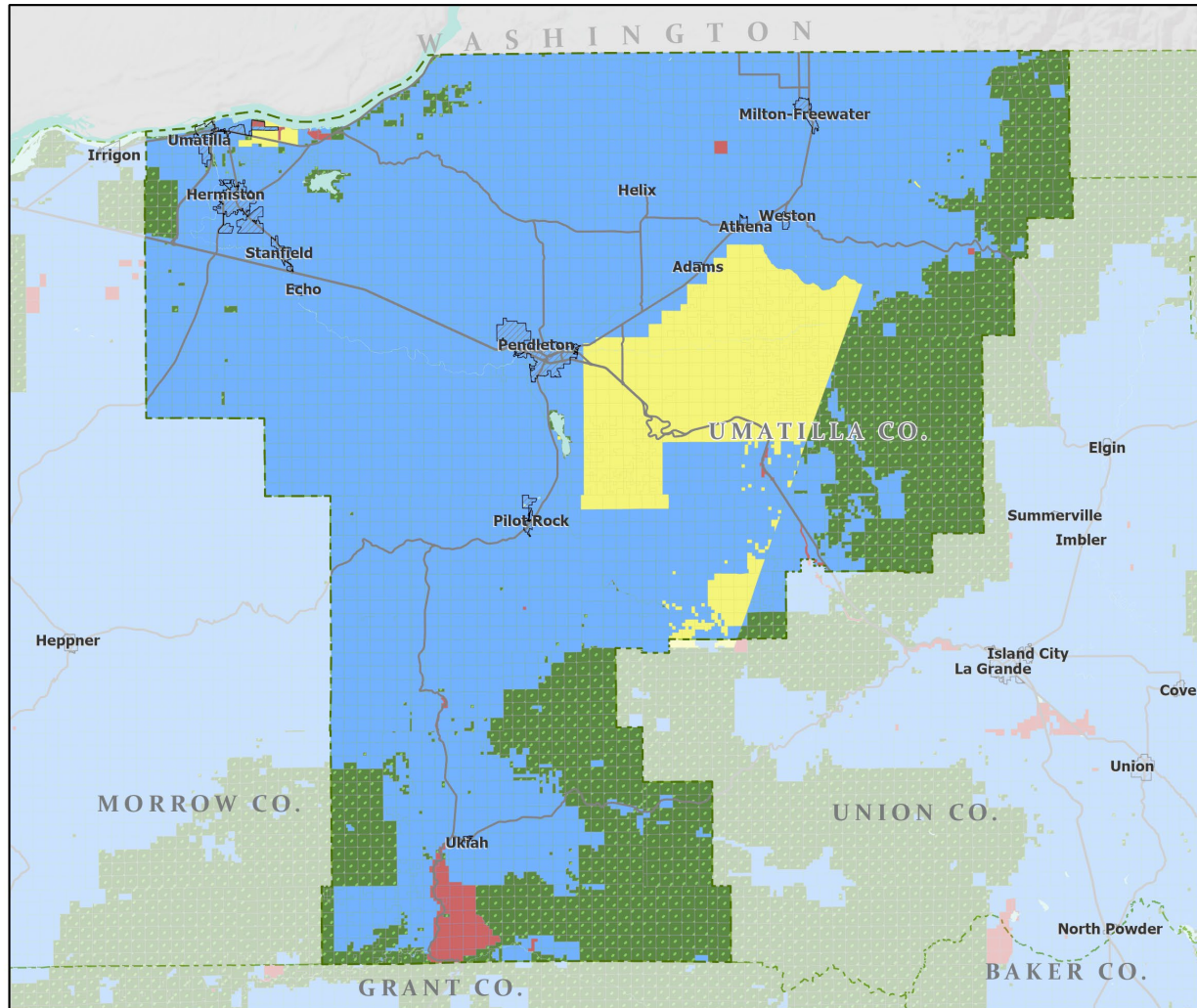


Portland State University,
Population Research Center,
May 2021.
www.pdx.edu/prc

Sources: Esri, USGS, NOAA
State of Oregon GEO;
Oregon Dept. of
Transportation.

0 60 Miles

Land Ownership: Umatilla County



- Counties
- Incorporated Cities
- Highways
- BLM OWNERSHIP (2015)**
 - Federal
 - State Government
 - Tribal
 - Private Industrial



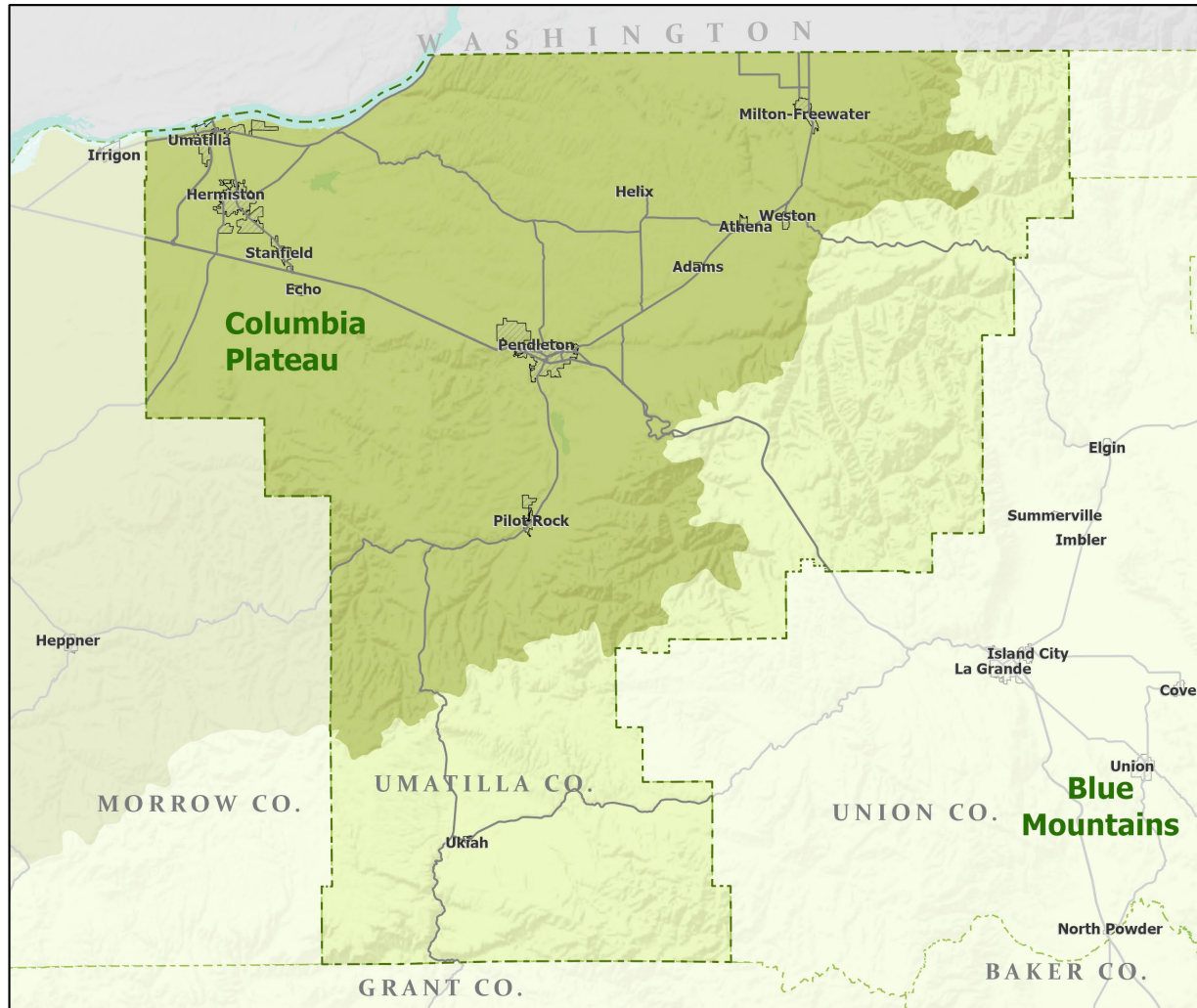
Portland State University,
Population Research Center,
May 2021.
www.pdx.edu/prc

Sources: Esri, USGS, NOAA

State of Oregon GEO;
Oregon Dept. of
Transportation; Bureau of
Land management.

0 60 Miles

Ecoregions: Umatilla County



- Counties
- Incorporated Cities
- Highways
- LEVEL III ECOREGIONS OF OREGON (2006)
- Blue Mountains
- Columbia Plateau

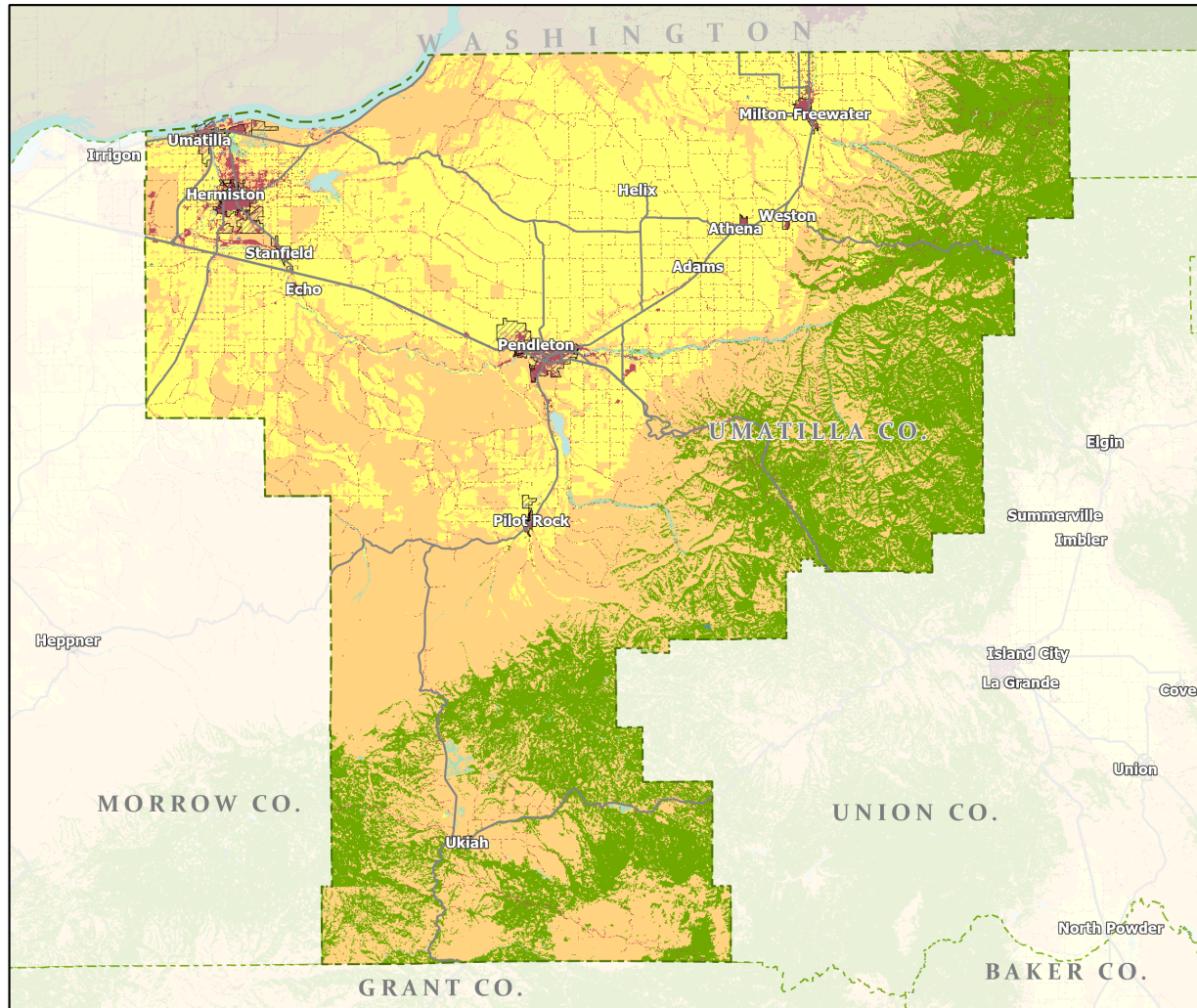


Portland State University,
Population Research Center,
May 2021.
www.pdx.edu/prc

Sources: Esri, USGS, NOAA
State of Oregon GEO;
Oregon Dept. of
Transportation.

0 60 Miles

Land Cover: Umatilla County



- Counties
- Incorporated Cities
- Highways

NATIONAL LAND COVER

- Developed
- Cultivated Crops/Pasture/Hay
- Barren Land
- Forest
- Grasslands/Scrub/Sedge
- Lichens/Moss
- Wetlands
- Perennial Snow/Ice
- Open Water



Portland State University,
Population Research Center,
May 2021.
www.pdx.edu/prc

Sources: Esri, USGS, NOAA
State of Oregon GEO;
Oregon Dept. of
Transportation.