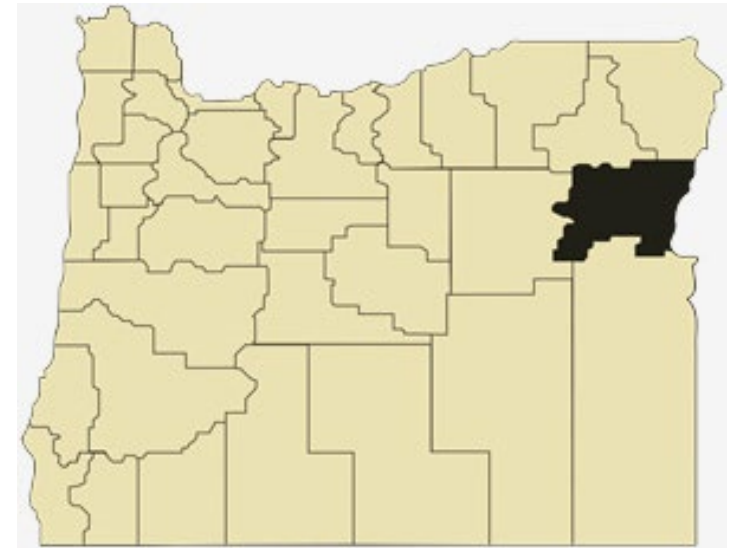


# Baker County Overview

## House and Senate Committees on Redistricting

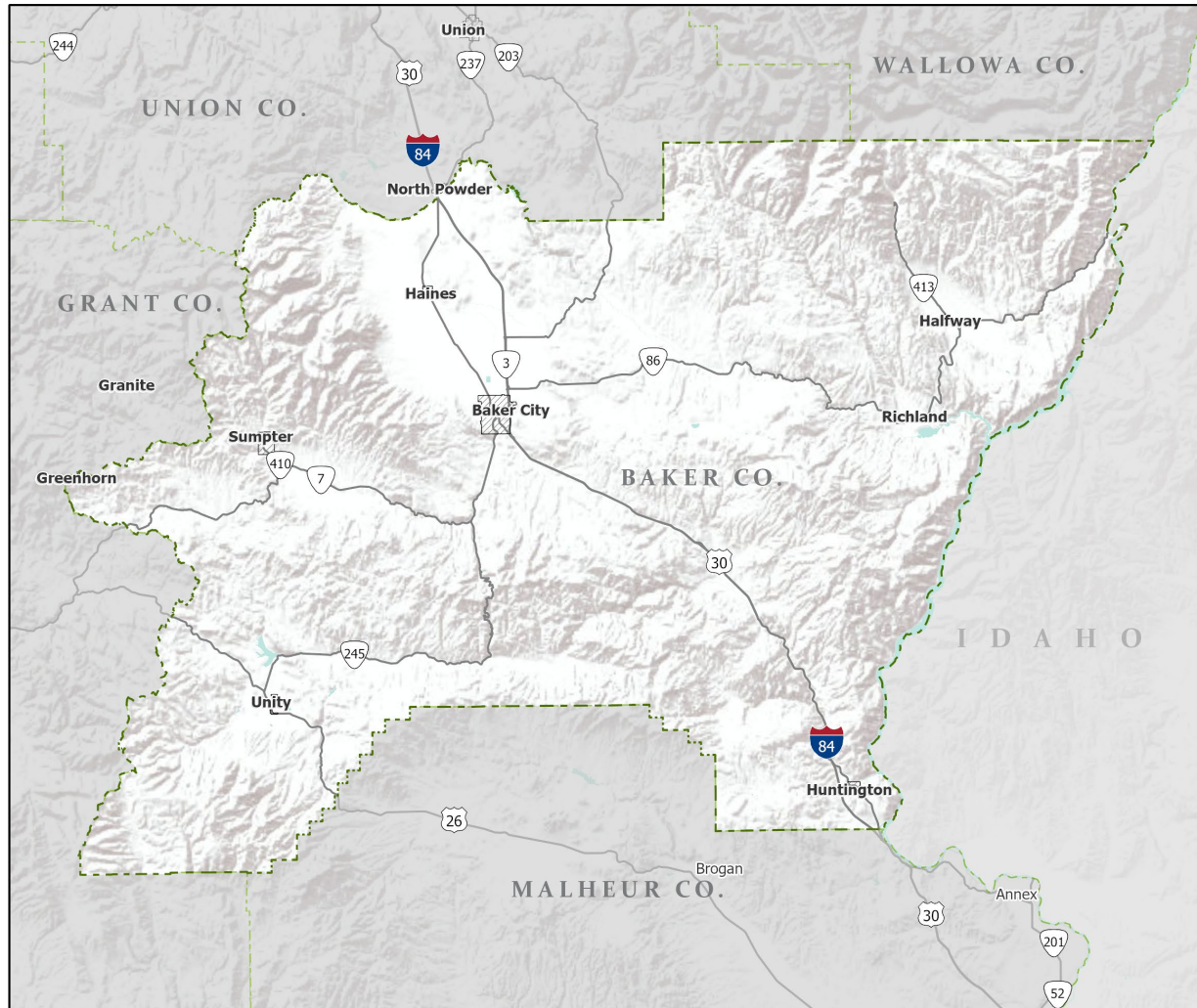
June 9, 2021

|                                  |        |
|----------------------------------|--------|
| July 1, 2020 population estimate | 16,910 |
| Population rank                  | 28th   |
| Share of state population        | 0.4%   |
| Density (per square mile)        | 5.5    |
| Density rank                     | 28th   |
| Area (square miles)              | 3,089  |
| Area rank                        | 10th   |
| Share of state area              | 3.2%   |



Sources: PSU Population Research Center; Oregon Blue Book.

# Highways: Baker County



- Counties
- Incorporated Cities
- Highways

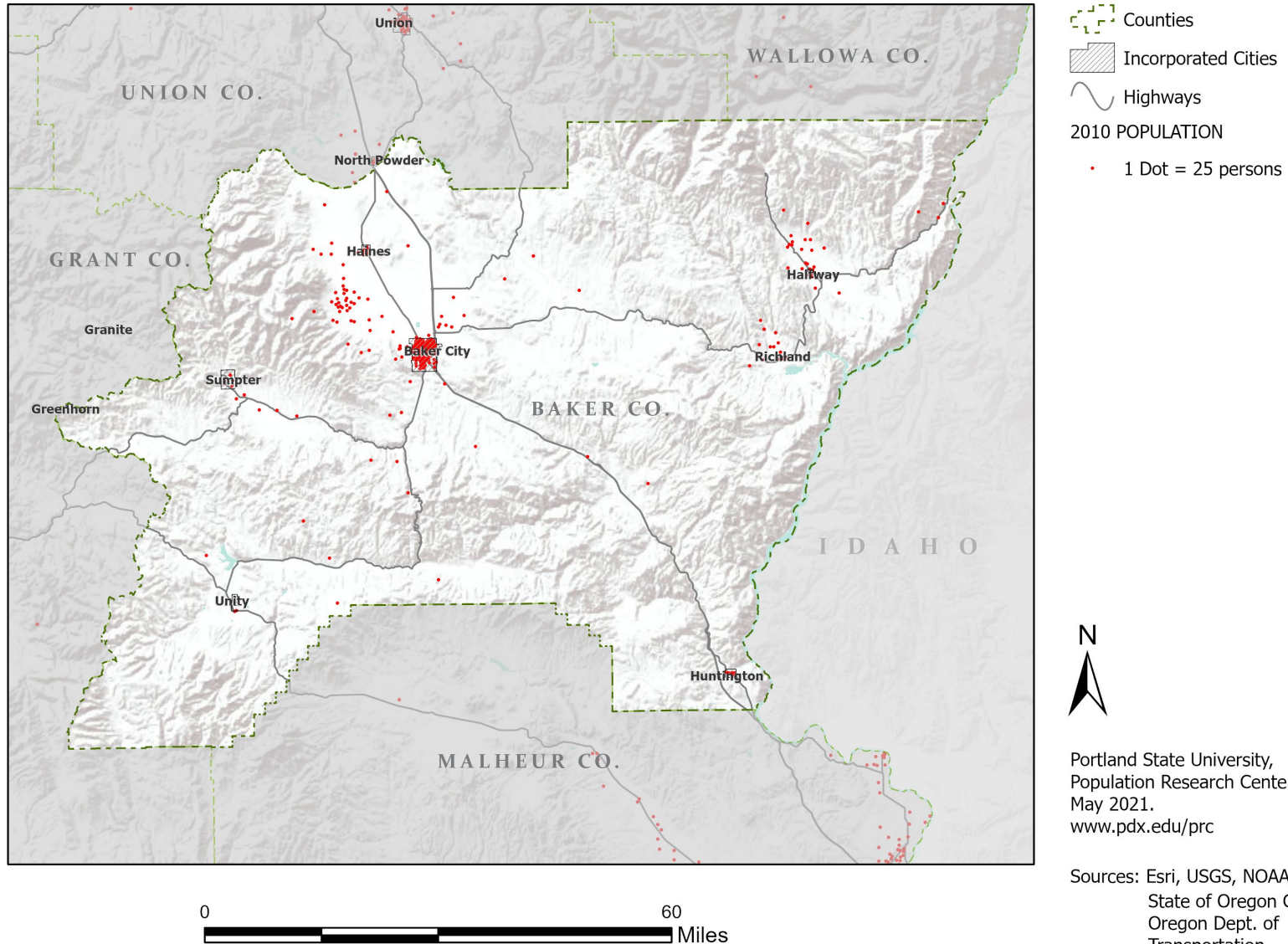


Portland State University,  
Population Research Center,  
May 2021.  
[www.pdx.edu/prc](http://www.pdx.edu/prc)

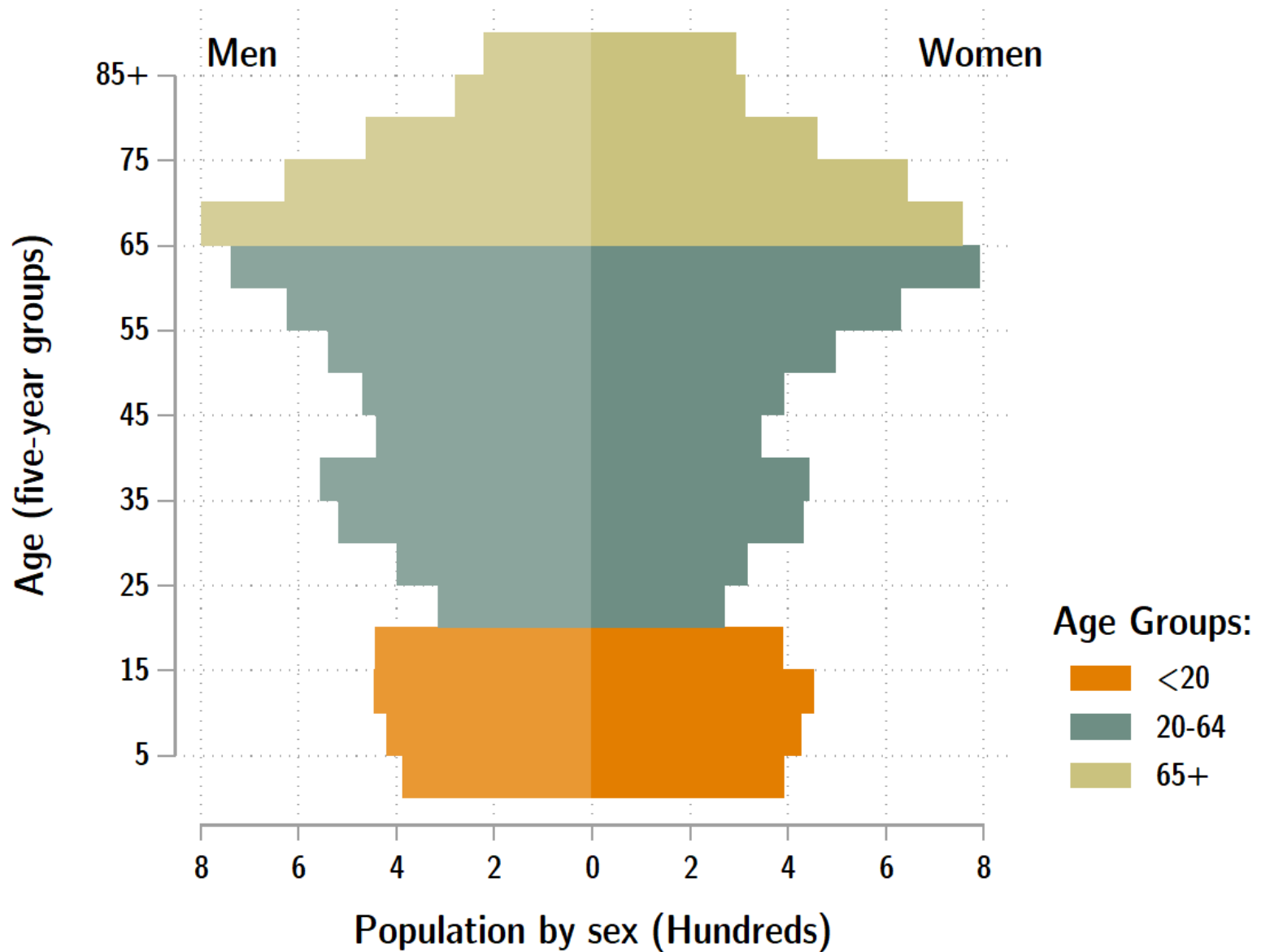
Sources: Esri, USGS, NOAA  
State of Oregon GEO;  
Oregon Dept. of  
Transportation.

0 60 Miles

# Population: Baker County



# Baker population by age & sex: 2020



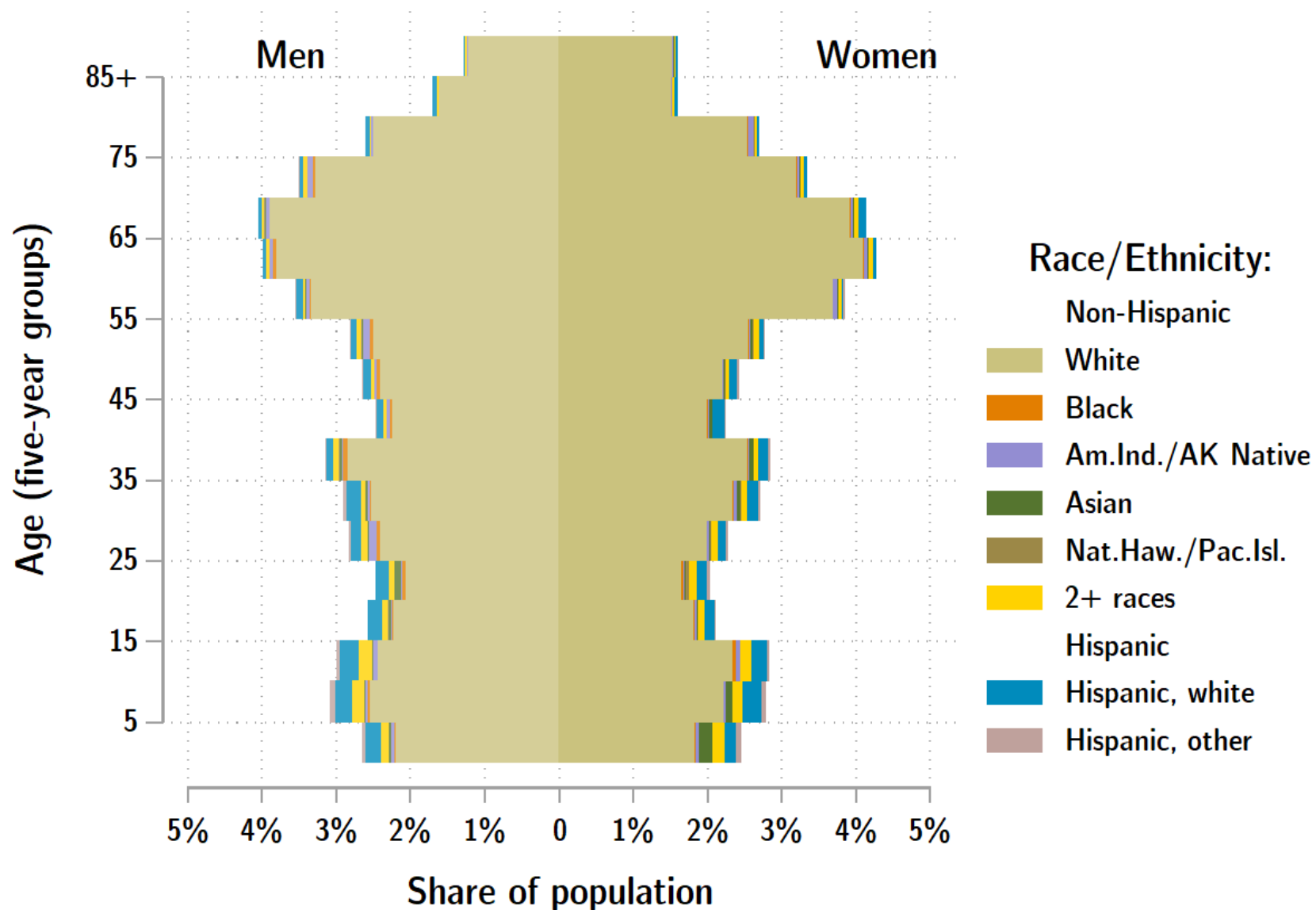
Source: Estimates by Population Research Center, PSU

# Age Distribution, Baker County

| Age Group        | 2020<br>Estimate | 2020<br>Percent of<br>Total | Oregon<br>2020<br>Percent of<br>Total |
|------------------|------------------|-----------------------------|---------------------------------------|
| Total population | 16,910           | 100.0%                      | 100.0%                                |
| Under age 5      | 778              | 4.6%                        | 5.4%                                  |
| Age 5 to 17      | 2,303            | 13.6%                       | 14.9%                                 |
| Age 18 to 64     | 8,976            | 53.1%                       | 61.1%                                 |
| Age 65 and over  | 4,853            | 28.7%                       | 18.6%                                 |

Source: PSU Population Research Center July 1, 2020 Population Estimates

# Baker County population by age & sex: 2019



Source: Estimates by US Census Bureau



# Race and Ethnicity, Baker County

| HISPANIC OR LATINO AND RACE                      | 2010 Census | 2010 Census Percent | 2015-19 ACS Estimate | 2015-19 ACS Percent | Oregon 2015-19 ACS Percent |
|--|-------------|---------------------|----------------------|---------------------|----------------------------|
| Total population                                 | 16,134      | 100.0%              | 16,019               | 100.0%              | 100.0%                     |
| Hispanic or Latino                               | 528         | 3.3%                | 691                  | 4.3%*               | 13.0%                      |
| Not Hispanic or Latino                           | 15,606      | 96.7%               | 15,328               | 95.7%*              | 87.0%                      |
| White alone                                      | 14,944      | 92.6%               | 14,479               | 90.4%*              | 75.7%                      |
| Black or African American alone                  | 52          | 0.3%                | 147                  | 0.9%*               | 1.8%                       |
| American Indian and Alaska Native alone          | 170         | 1.1%                | 180                  | 1.1%                | 0.9%                       |
| Asian alone                                      | 78          | 0.5%                | 109                  | 0.7%                | 4.3%                       |
| Native Hawaiian and Other Pacific Islander alone | 9           | 0.1%                | 59                   | 0.4%*               | 0.4%                       |
| Some Other Race alone                            | 7           | 0.0%                | 21                   | 0.1%                | 0.1%                       |
| Two or More Races                                | 346         | 2.1%                | 333                  | 2.1%                | 3.7%                       |

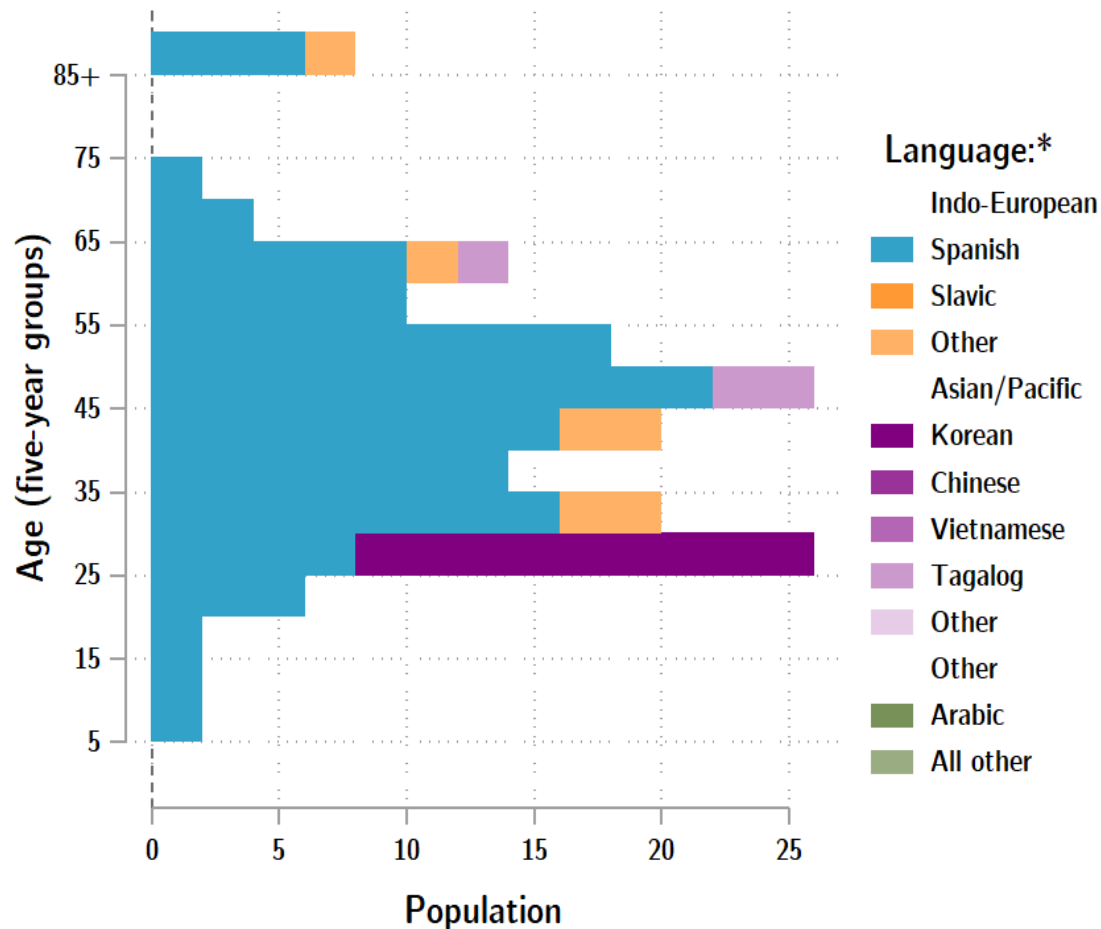
| RACE ALONE OR IN COMBINATION WITH ONE OR MORE OTHER RACES** | 2010 Census | 2010 Census Percent | 2015-19 ACS Estimate | 2015-19 ACS Percent | Oregon 2015-19 ACS Percent |
|---|-------------|---------------------|----------------------|---------------------|----------------------------|
| White   | 15,632      | 96.9%               | 15,180               | 94.8%*              | 88.8%                      |
| Black or African American                                   | 104         | 0.6%                | 185                  | 1.2%*               | 2.9%                       |
| American Indian and Alaska Native                           | 458         | 2.8%                | 377                  | 2.4%*               | 3.1%                       |
| Asian   | 124         | 0.8%                | 217                  | 1.4%*               | 6.0%                       |
| Native Hawaiian and Other Pacific Islander                  | 25          | 0.2%                | 90                   | 0.6%*               | 0.8%                       |
| Some Other Race   | 186         | 1.2%                | 320                  | 2.0%*               | 3.6%                       |

Source: U.S. Census Bureau, 2010 Census and 2019 5-year American Community Survey estimates.

\* Difference between 2010 Census and 2015-19 ACS is statistically significant at the 90% confidence level.

\*\* Total may add to more than 100% due to persons identifying as more than one race.

Baker County population by age & language: 2019



Language Spoken at Home  
Speak English less than "very well"  
Baker County

| Languages                                  | Estimate |
|--|----------|
| Total Population Age 5 and Older           | 15,229   |
| Speaking English less than "very well"     | 205      |
| Spanish                                    | 140      |
| Russian, Polish, or other Slavic languages | 0        |
| Other Indo-European languages              | 15       |
| Korean                                     | 22       |
| Chinese (incl. Cantonese and Mandarin)     | 0        |
| Vietnamese                                 | 0        |
| Tagalog (incl. Filipino)                   | 6        |
| Other Asian and Pacific Island languages   | 3        |
| Arabic                                     | 0        |
| Other languages                            | 19       |

Source: U.S. Census Bureau American Community Survey 2019 5-year estimates, Table C16001.

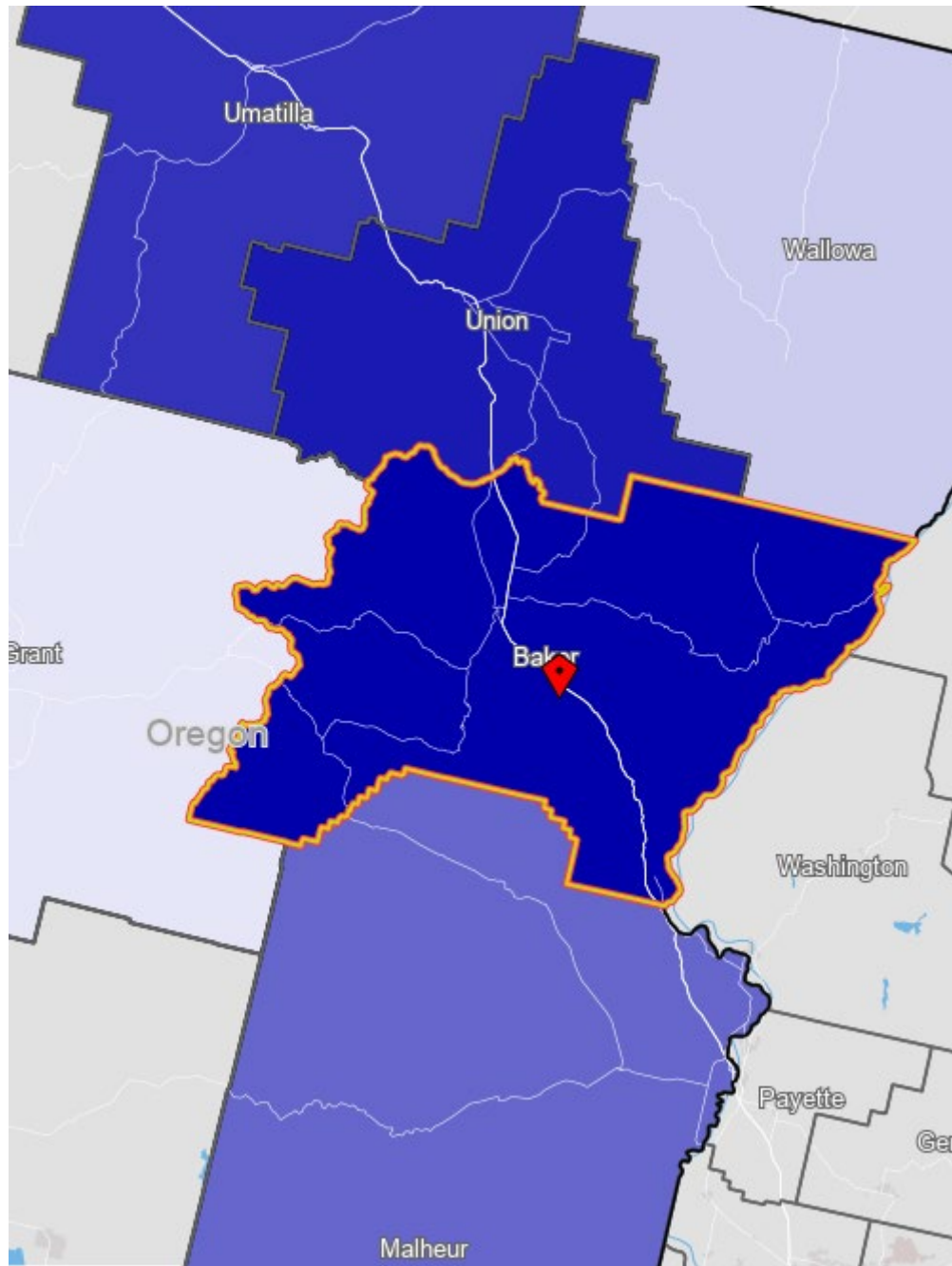
Note: \* Languages for persons who speak English less than very well.  
Source: ACS tables B16004, C16001, PUMS; PEP estimates; Analysis by PRC, PSU

[Link to Table C16001](#) for all counties, including margins of error.

[Visualization](#) of language data by census tract within county.



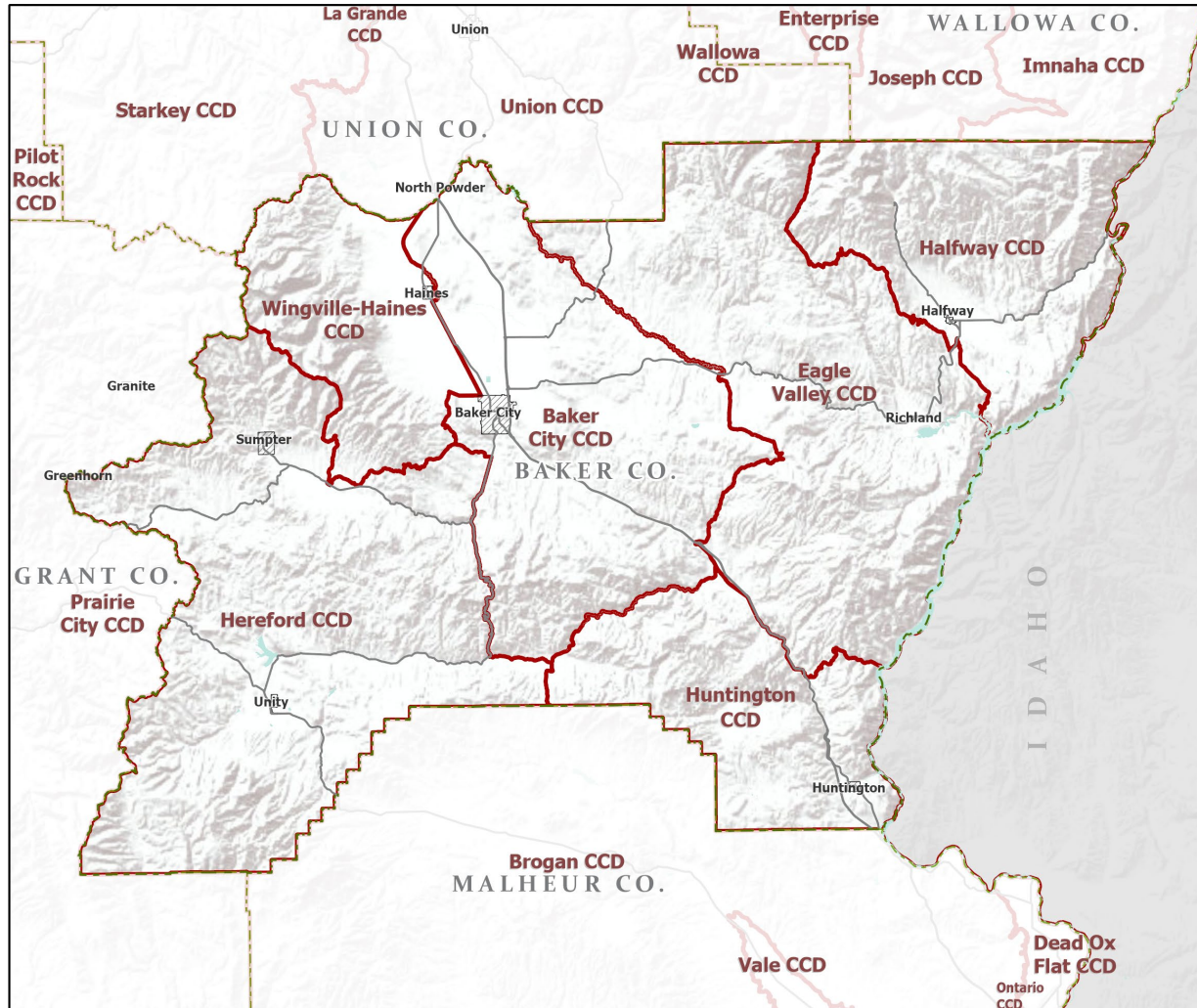
# Baker County Commute Flows



## Jobs Counts by Counties Where Workers are Employed - All Jobs

| 2018                                 |       |        |
|--------------------------------------|-------|--------|
|                                      | Count | Share  |
| <a href="#">All Counties</a>         | 6,273 | 100.0% |
| <a href="#">Baker County, OR</a>     | 4,039 | 64.4%  |
| <a href="#">Union County, OR</a>     | 474   | 7.6%   |
| <a href="#">Umatilla County, OR</a>  | 264   | 4.2%   |
| <a href="#">Multnomah County, OR</a> | 168   | 2.7%   |
| <a href="#">Malheur County, OR</a>   | 136   | 2.2%   |
| <a href="#">Benton County, WA</a>    | 107   | 1.7%   |
| <a href="#">Marion County, OR</a>    | 82    | 1.3%   |
| <a href="#">Deschutes County, OR</a> | 67    | 1.1%   |
| <a href="#">Wallowa County, OR</a>   | 63    | 1.0%   |
| <a href="#">Grant County, OR</a>     | 59    | 0.9%   |
| All Other Locations                  | 814   | 13.0%  |

# County Subdivisions (CCDs): Baker County



- Counties
- Incorporated Cities
- Highways
- County Subdivisions (CCDs)



Portland State University,  
Population Research Center,  
May 2021.  
[www.pdx.edu/prc](http://www.pdx.edu/prc)

Sources: Esri, USGS, NOAA  
State of Oregon GEO;  
Oregon Dept. of  
Transportation.

0 60 Miles

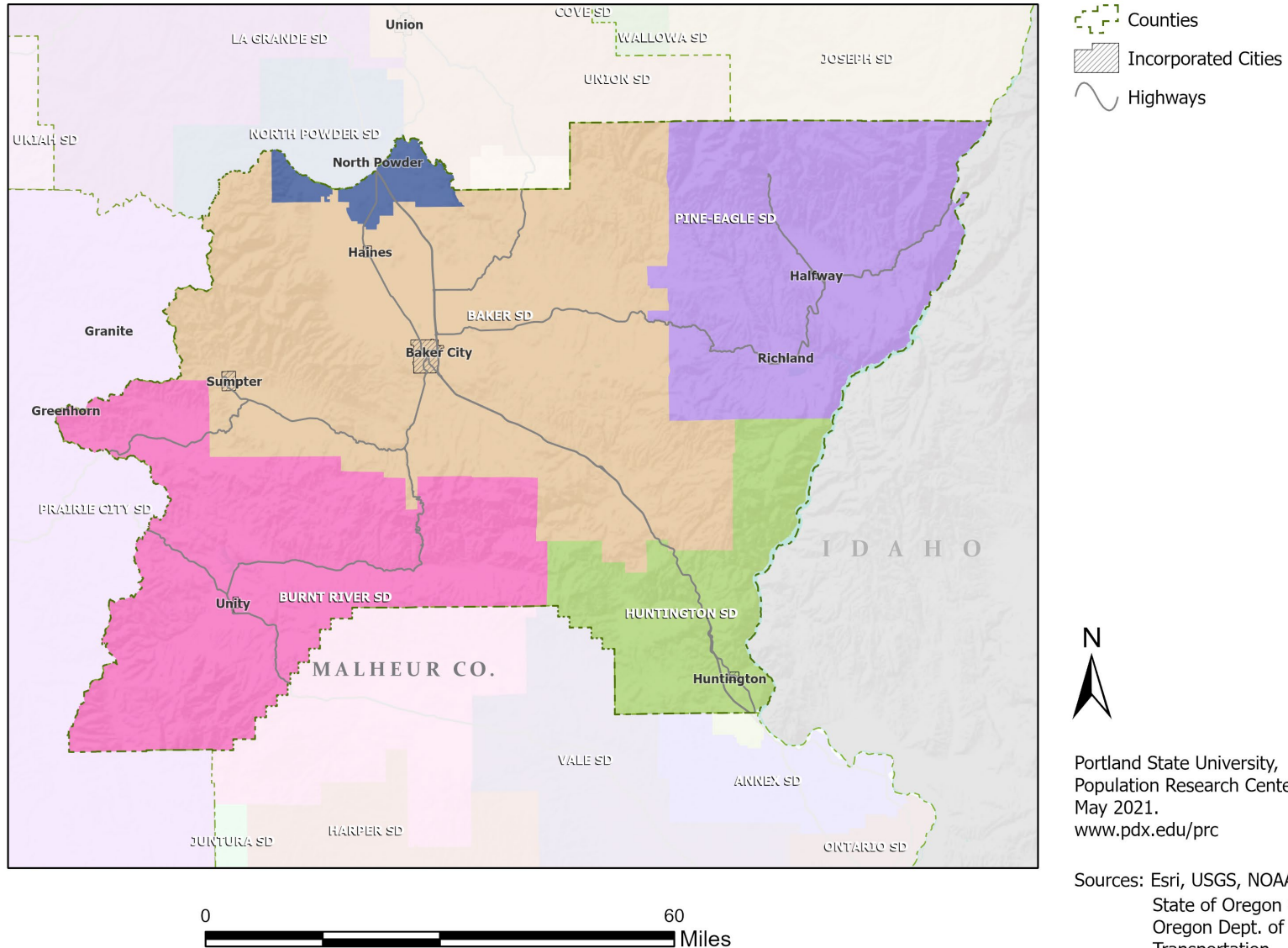
# Baker County Employment by Sector by Census County Division

| Sector                               | Oregon    | County<br>Total | Baker<br>City<br>CCD | Eagle<br>Valley<br>CCD | Halfway<br>CCD | Hereford<br>CCD | Huntingt<br>on CCD | Wingville<br>-Haines<br>CCD |
|--------------------------------------|-----------|-----------------|----------------------|------------------------|----------------|-----------------|--------------------|-----------------------------|
| Total, All Jobs*                     | 1,904,601 | 5,579           | 4,589                | 178                    | 397            | 112             | 90                 | 213                         |
| Goods-Producing                      | 18.6%     | 21.2%           | 18.1%                | 54.5%                  | 42.6%          | 7.1%            | 16.7%              | 29.1%                       |
| Natural Resources and Mining         | 2.7%      | 5.3%            | 3.0%                 | 31.5%                  | 6.8%           | 4.5%            | 16.7%              | 24.9%                       |
| Construction                         | 5.9%      | 5.4%            | 5.3%                 | 22.5%                  | 2.0%           | 2.7%            | 0.0%               | 4.2%                        |
| Manufacturing                        | 10.0%     | 10.5%           | 9.8%                 | 0.6%                   | 33.8%          | 0.0%            | 0.0%               | 0.0%                        |
| Service Providing                    | 81.4%     | 78.8%           | 81.9%                | 45.5%                  | 57.4%          | 92.9%           | 83.3%              | 70.9%                       |
| Trade, Transportation, and Utilities | 18.6%     | 20.7%           | 21.3%                | 21.3%                  | 20.4%          | 15.2%           | 24.4%              | 9.9%                        |
| Information                          | 2.0%      | 1.0%            | 0.8%                 | 6.2%                   | 1.3%           | 0.0%            | 0.0%               | 0.9%                        |
| Financial Activities                 | 4.6%      | 2.5%            | 2.7%                 | 0.0%                   | 2.3%           | 0.0%            | 5.6%               | 0.9%                        |
| Professional and Business Services   | 13.4%     | 5.6%            | 6.3%                 | 2.8%                   | 2.0%           | 0.9%            | 0.0%               | 4.2%                        |
| Education and Health Services        | 23.1%     | 24.3%           | 26.8%                | 0.6%                   | 12.8%          | 33.9%           | 24.4%              | 7.5%                        |
| Leisure and Hospitality              | 11.4%     | 10.9%           | 10.2%                | 5.1%                   | 11.3%          | 1.8%            | 20.0%              | 32.4%                       |
| Other Services                       | 4.2%      | 6.7%            | 6.9%                 | 7.3%                   | 3.0%           | 4.5%            | 4.4%               | 10.8%                       |
| Public Administration                | 4.2%      | 7.1%            | 7.0%                 | 2.2%                   | 4.3%           | 36.6%           | 4.4%               | 4.2%                        |

Source: U.S. Census Bureau, LEHD Origin-Destination Employment Statistics, 2018 Q2

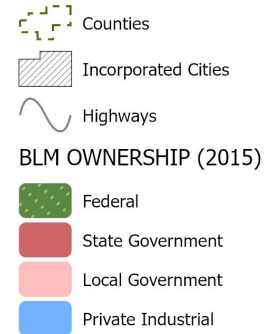
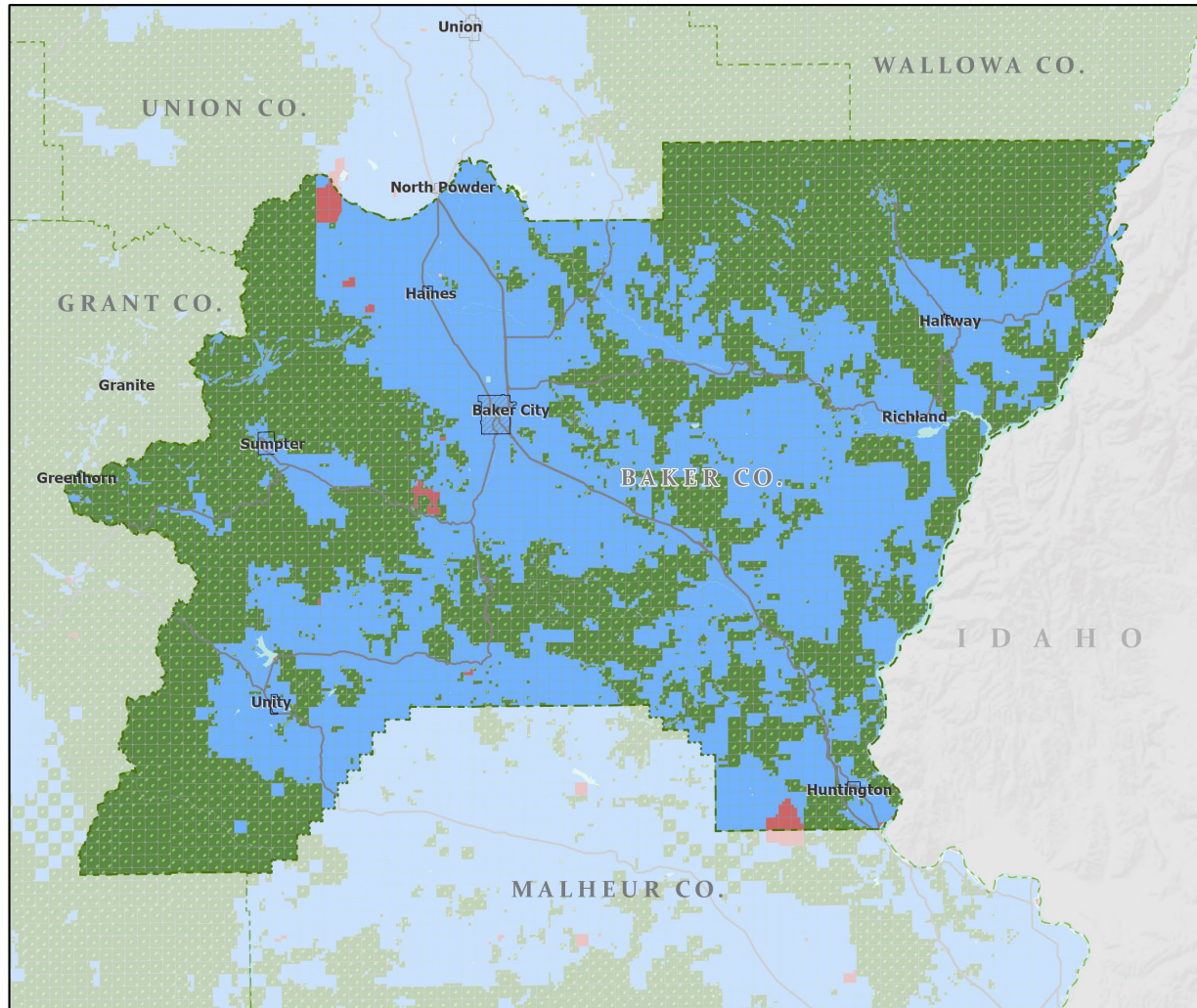
\* Jobs covered by unemployment insurance and federal workers.

# School Districts: Baker County





# Land Ownership: Baker County



Portland State University,  
Population Research Center,  
May 2021.  
[www.pdx.edu/prc](http://www.pdx.edu/prc)

Sources: Esri, USGS, NOAA

State of Oregon GEO;  
Oregon Dept. of  
Transportation; Bureau of  
Land management.

0 60 Miles

# Ecoregions: Baker County



- Counties
- Incorporated Cities
- Highways
- LEVEL III ECOREGIONS OF OREGON (2006)
  - Blue Mountains
  - Snake River Plain

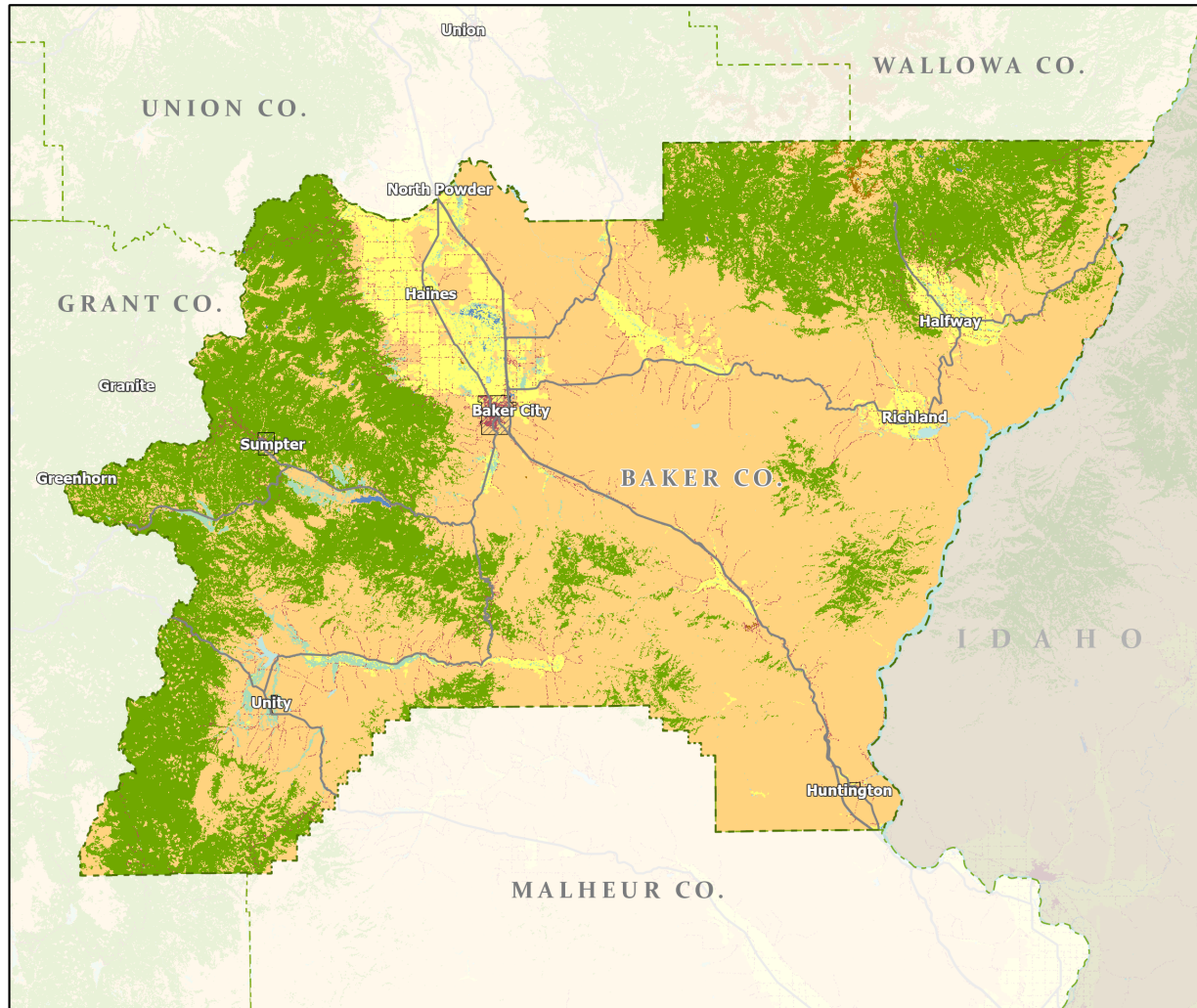


Portland State University,  
Population Research Center,  
May 2021.  
[www.pdx.edu/prc](http://www.pdx.edu/prc)

Sources: Esri, USGS, NOAA  
State of Oregon GEO;  
Oregon Dept. of  
Transportation.



# Land Cover: Baker County



- Counties
- Incorporated Cities
- Highways

## NATIONAL LAND COVER

- Developed
- Cultivated Crops/Pasture/Hay
- Barren Land
- Forest
- Grasslands/Scrub/Sedge
- Lichens/Moss
- Wetlands
- Perennial Snow/Ice
- Open Water



Portland State University,  
Population Research Center,  
May 2021.  
[www.pdx.edu/prc](http://www.pdx.edu/prc)

Sources: Esri, USGS, NOAA  
State of Oregon GEO;  
Oregon Dept. of  
Transportation.