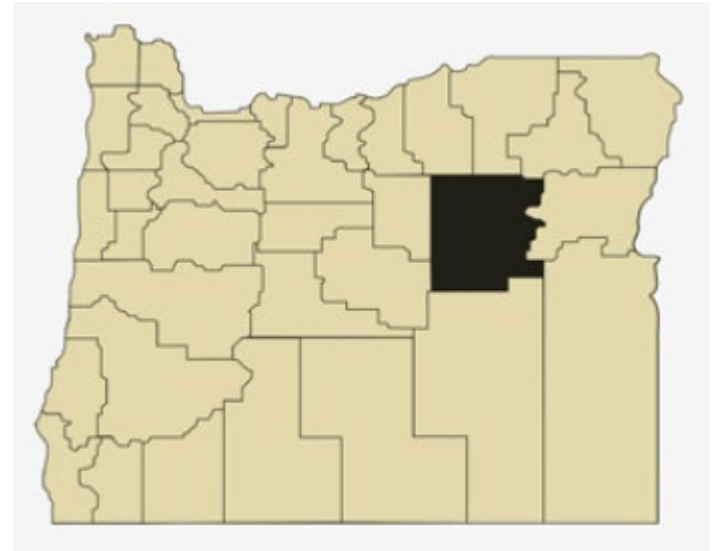


Grant County Overview

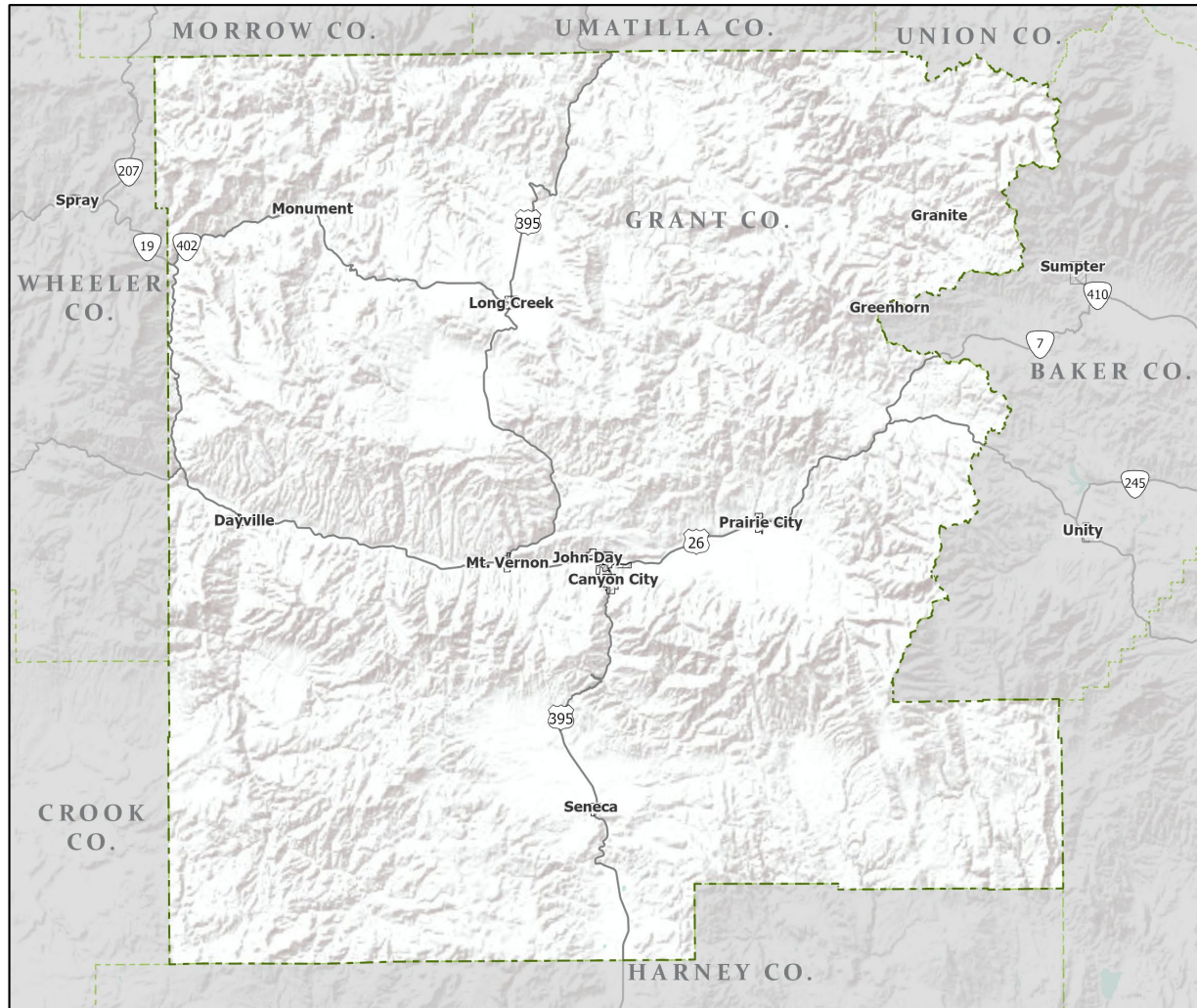
House and Senate Committees on Redistricting June 9, 2021

July 1, 2020 population estimate	7,315
Population rank	31st
Share of state population	0.2%
Density (per square mile)	1.6
Density rank	33rd
Area (square miles)	4,528
Area rank	7th
Share of state area	4.7%



Sources: PSU Population Research Center; Oregon Blue Book.

Highways: Grant County



- Counties
- Incorporated Cities
- Highways

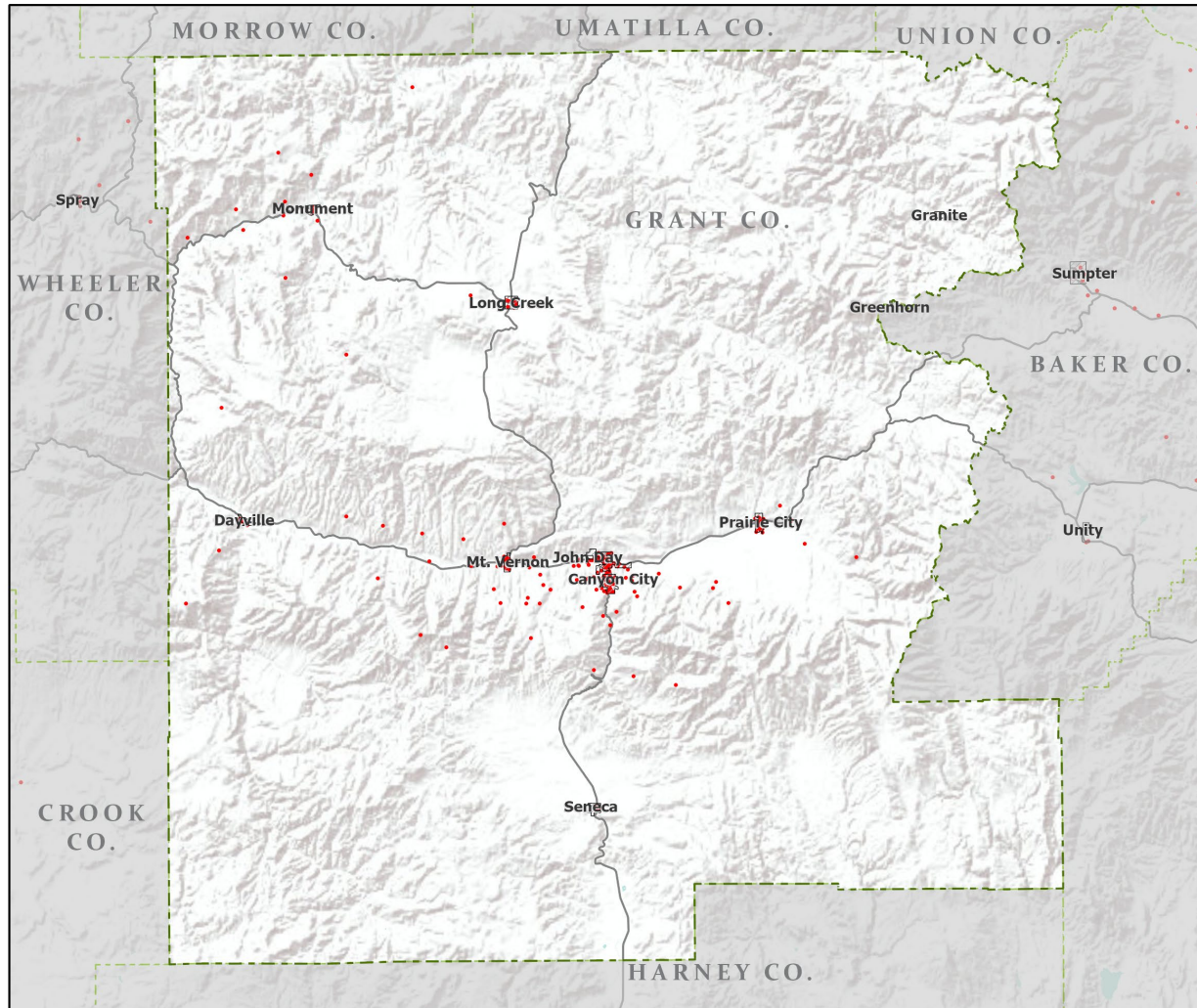


Portland State University,
Population Research Center,
May 2021.
www.pdx.edu/prc

Sources: Esri, USGS, NOAA
State of Oregon GEO;
Oregon Dept. of
Transportation.

0 60 Miles

Population: Grant County



- Counties
- Incorporated Cities
- Highways
- 2010 POPULATION
- 1 Dot = 25 persons

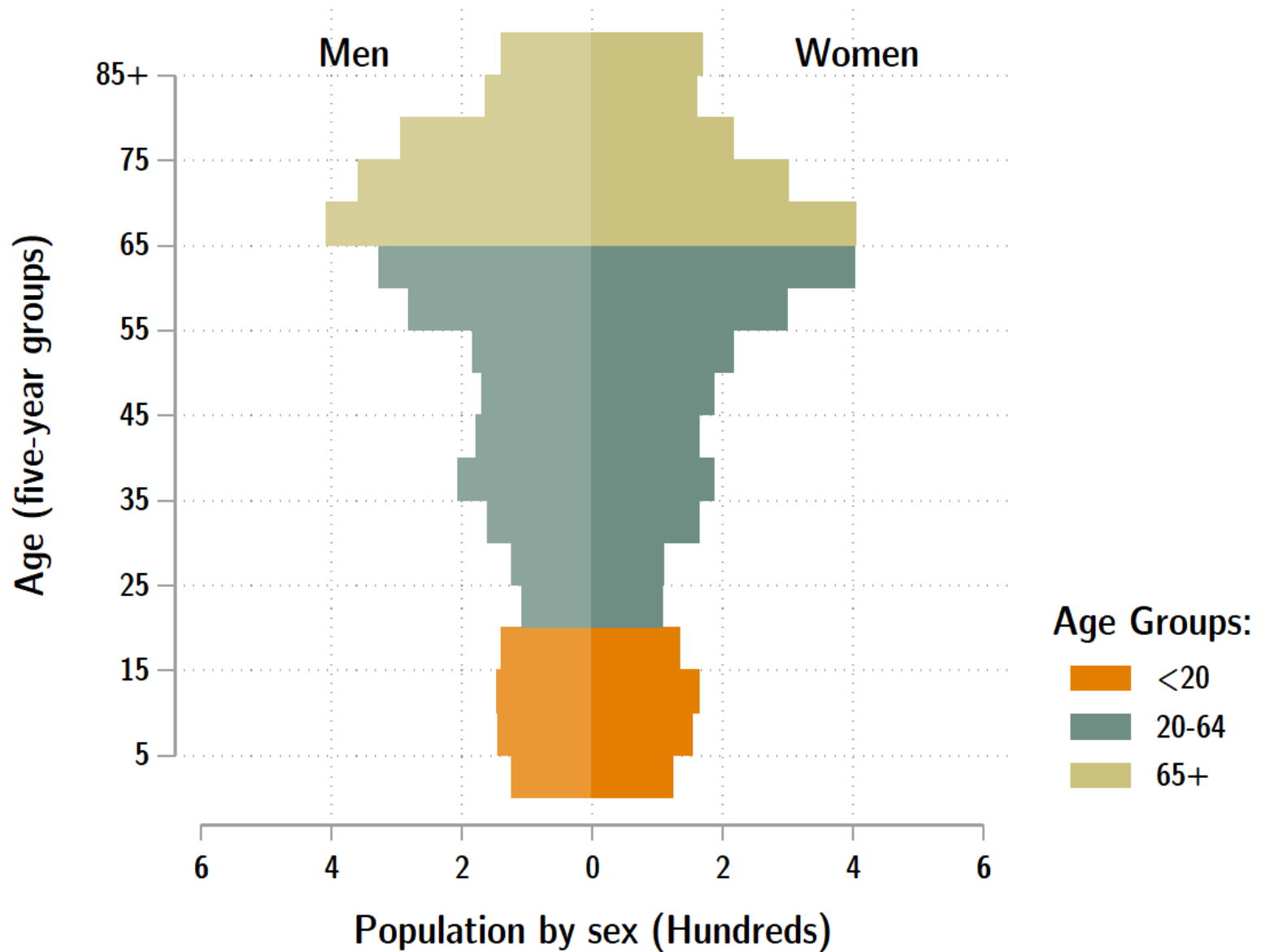


Portland State University,
Population Research Center,
May 2021.
www.pdx.edu/prc

Sources: Esri, USGS, NOAA
State of Oregon GEO;
Oregon Dept. of
Transportation.

0 60 Miles

Grant population by age & sex: 2020



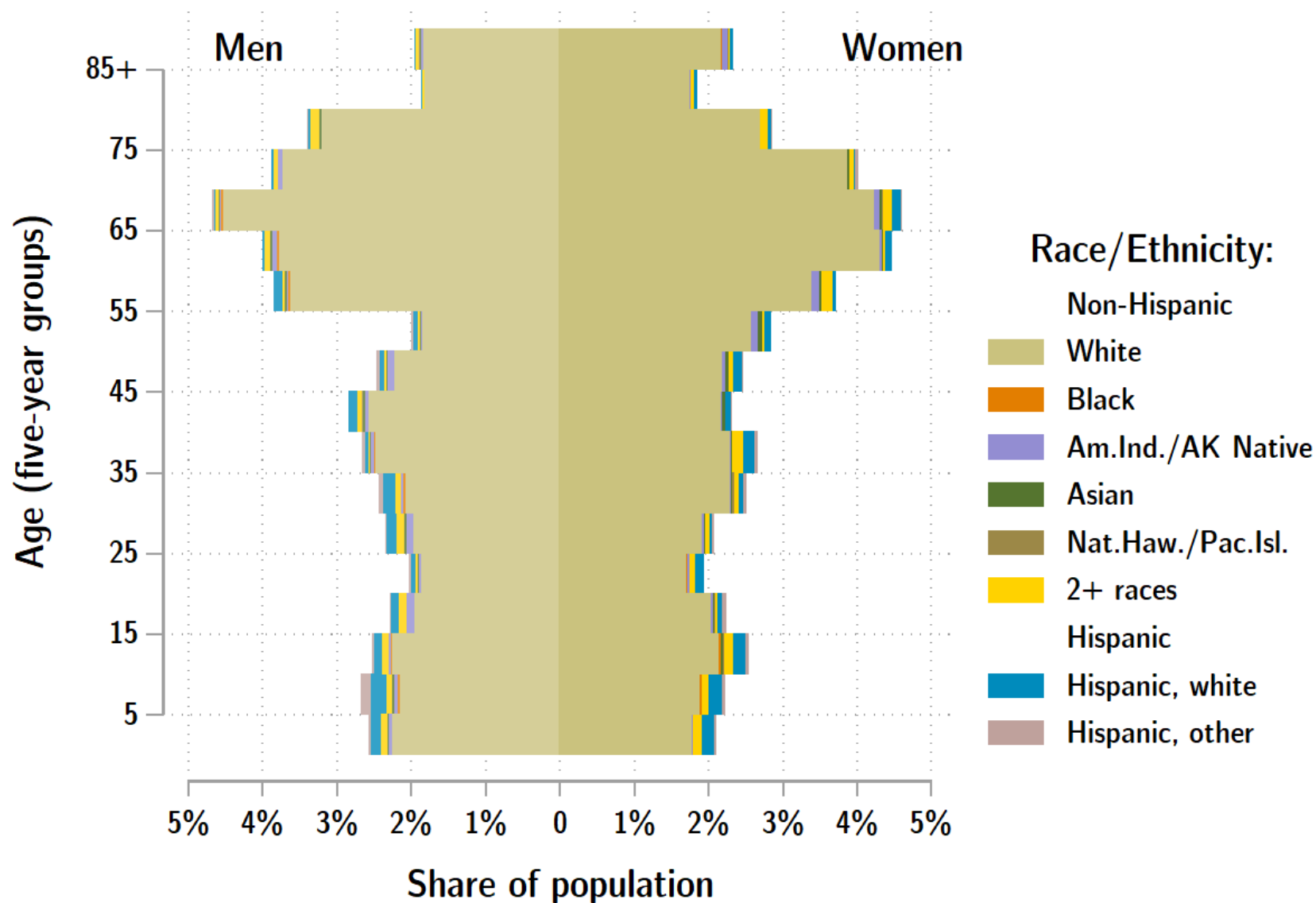
Source: Estimates by Population Research Center, PSU

Age Distribution, Grant County

Age Group	2020 Estimate	2020 Percent of Total	Oregon 2020 Percent of Total
Total population	7,315	100.0%	100.0%
Under age 5	246	3.4%	5.4%
Age 5 to 17	776	10.6%	14.9%
Age 18 to 64	3,680	50.3%	61.1%
Age 65 and over	2,613	35.7%	18.6%

Source: PSU Population Research Center July 1, 2020 Population Estimates

Grant County population by age & sex: 2019



Source: Estimates by US Census Bureau

Race and Ethnicity, Grant County

HISPANIC OR LATINO AND RACE	2010 Census	2010 Census Percent	2015-19 ACS Estimate	2015-19 ACS Percent	Oregon 2015-19 ACS Percent
Total population	7,445	100.0%	7,189	100.0%	100.0%
Hispanic or Latino	207	2.8%	272	3.8%*	13.0%
Not Hispanic or Latino	7,238	97.2%	6,917	96.2%*	87.0%
White alone	6,951	93.4%	6,575	91.5%*	75.7%
Black or African American alone	11	0.1%	7	0.1%	1.8%
American Indian and Alaska Native alone	88	1.2%	96	1.3%	0.9%
Asian alone	24	0.3%	55	0.8%*	4.3%
Native Hawaiian and Other Pacific Islander alone	6	0.1%	17	0.2%	0.4%
Some Other Race alone	2	0.0%	1	0.0%	0.1%
Two or More Races	156	2.1%	166	2.3%	3.7%

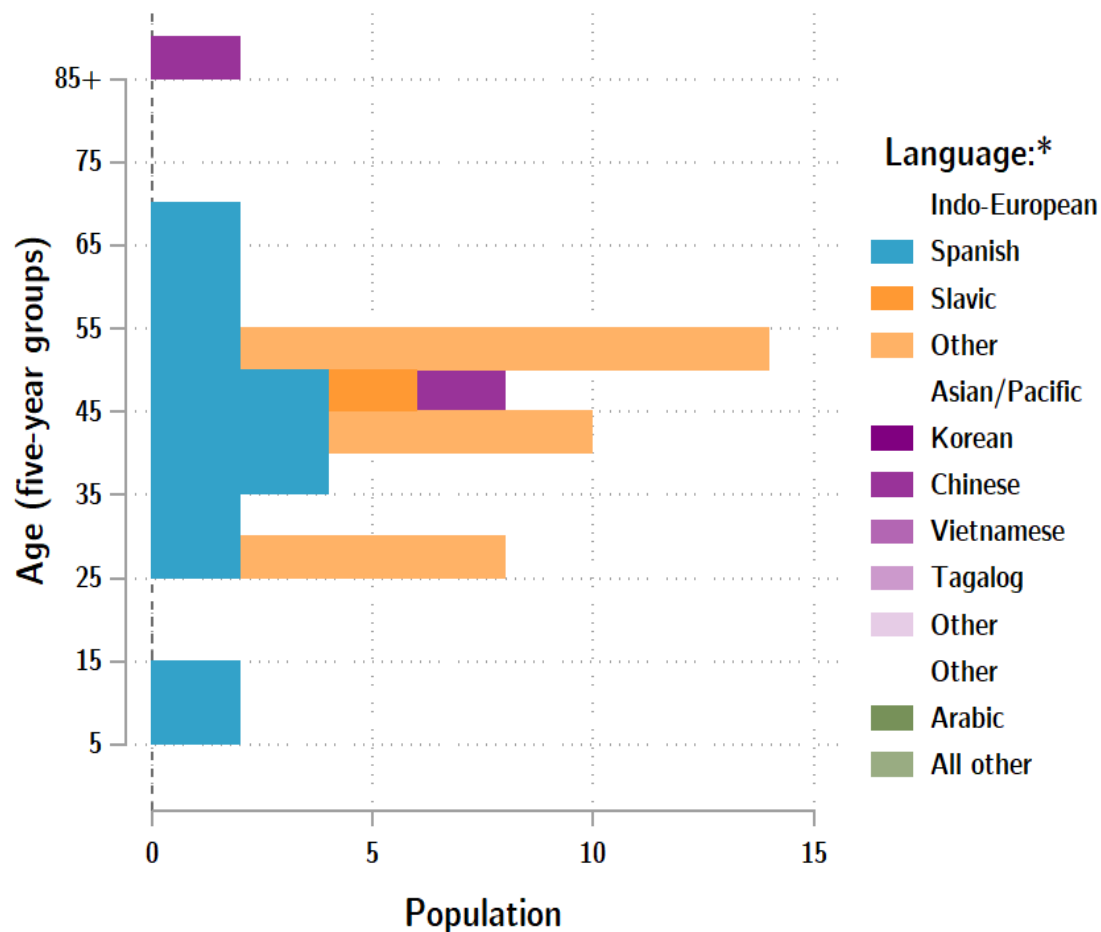
RACE ALONE OR IN COMBINATION WITH ONE OR MORE OTHER RACES**	2010 Census	2010 Census Percent	2015-19 ACS Estimate	2015-19 ACS Percent	Oregon 2015-19 ACS Percent
White	7,238	97.2%	6,979	97.1%	88.8%
Black or African American	38	0.5%	13	0.2%*	2.9%
American Indian and Alaska Native	213	2.9%	223	3.1%	3.1%
Asian	44	0.6%	66	0.9%	6.0%
Native Hawaiian and Other Pacific Islander	13	0.2%	40	0.6%	0.8%
Some Other Race	80	1.1%	38	0.5%*	3.6%

Source: U.S. Census Bureau, 2010 Census and 2019 5-year American Community Survey estimates.

* Difference between 2010 Census and 2015-19 ACS is statistically significant at the 90% confidence level.

** Total may add to more than 100% due to persons identifying as more than one race.

Grant County population by age & language: 2019



Language Spoken at Home Speak English less than "very well" Grant County

Languages	Estimate
Total Population Age 5 and Older	6,859
Speaking English less than "very well"	82
Spanish	32
Russian, Polish, or other Slavic languages	3
Other Indo-European languages	26
Korean	0
Chinese (incl. Cantonese and Mandarin)	4
Vietnamese	0
Tagalog (incl. Filipino)	0
Other Asian and Pacific Island languages	0
Arabic	0
Other languages	17

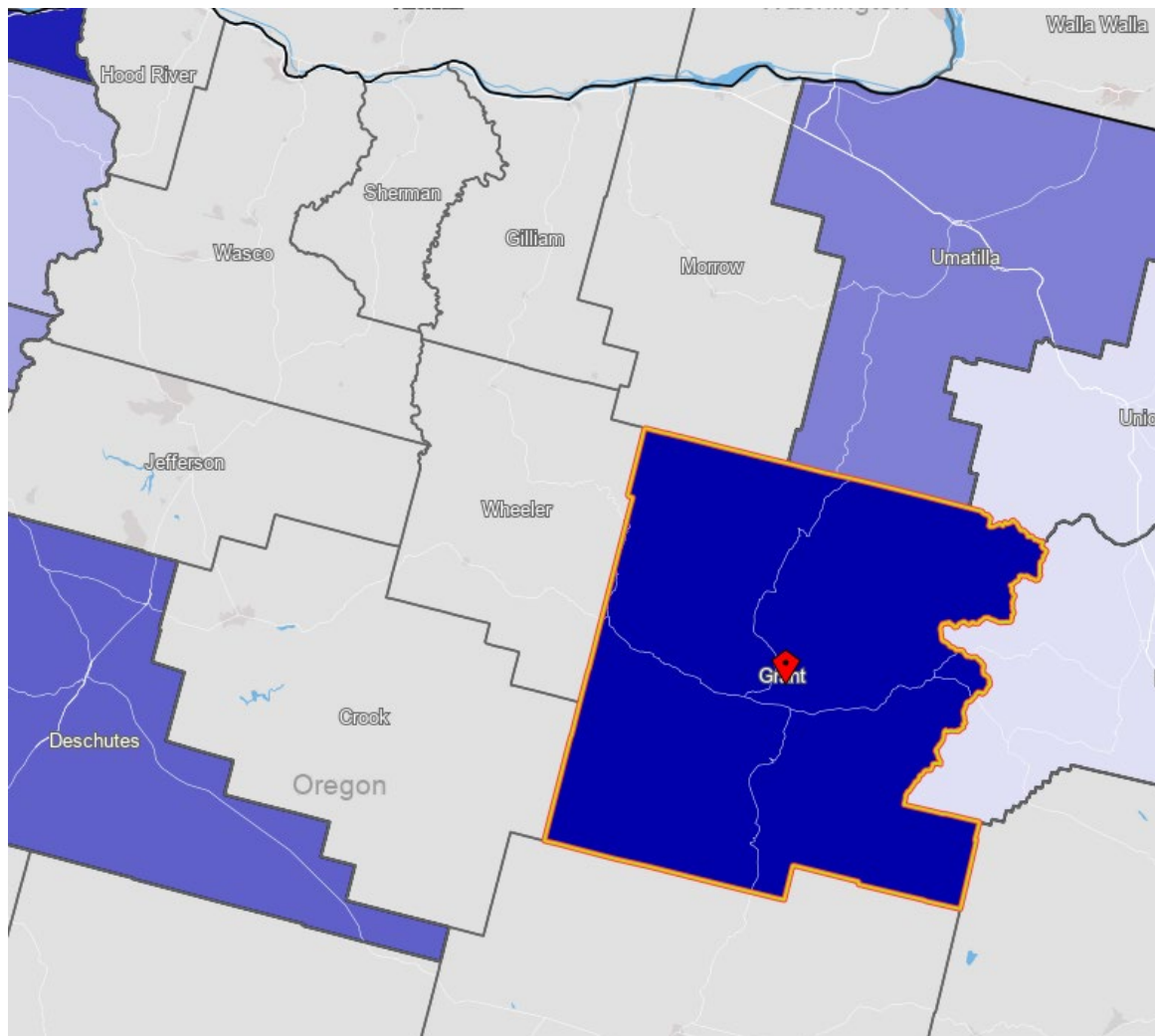
Source: U.S. Census Bureau American Community Survey 2019 5-year estimates, Table C16001.

Note: * Languages for persons who speak English less than very well.
Source: ACS tables B16004, C16001, PUMS; PEP estimates; Analysis by PRC, PSU

[Link to Table C16001](#) for all counties, including margins of error.

[Visualization](#) of language data by census tract within county.

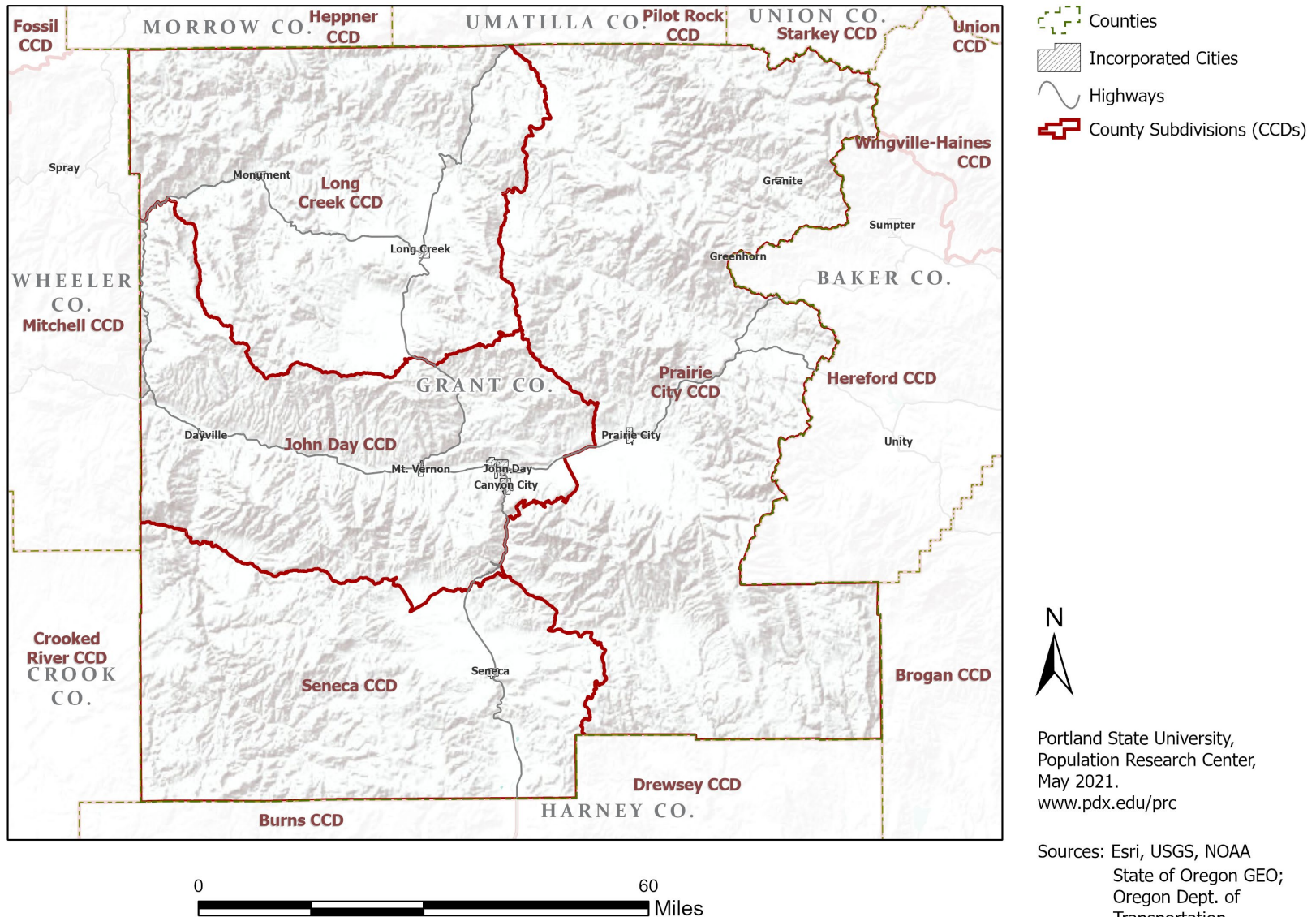
Grant County Commute Flows



Jobs Counts by Counties Where Workers are Employed - All Jobs

	2018	
	Count	Share
All Counties	2,709	100.0%
Grant County, OR	1,585	58.5%
Multnomah County, OR	159	5.9%
Washington County, OR	98	3.6%
Deschutes County, OR	92	3.4%
Umatilla County, OR	76	2.8%
Marion County, OR	66	2.4%
Clackamas County, OR	39	1.4%
Baker County, OR	38	1.4%
Union County, OR	38	1.4%
Yakima County, WA	38	1.4%
All Other Locations	480	17.7%

County Subdivisions (CCDs): Grant County



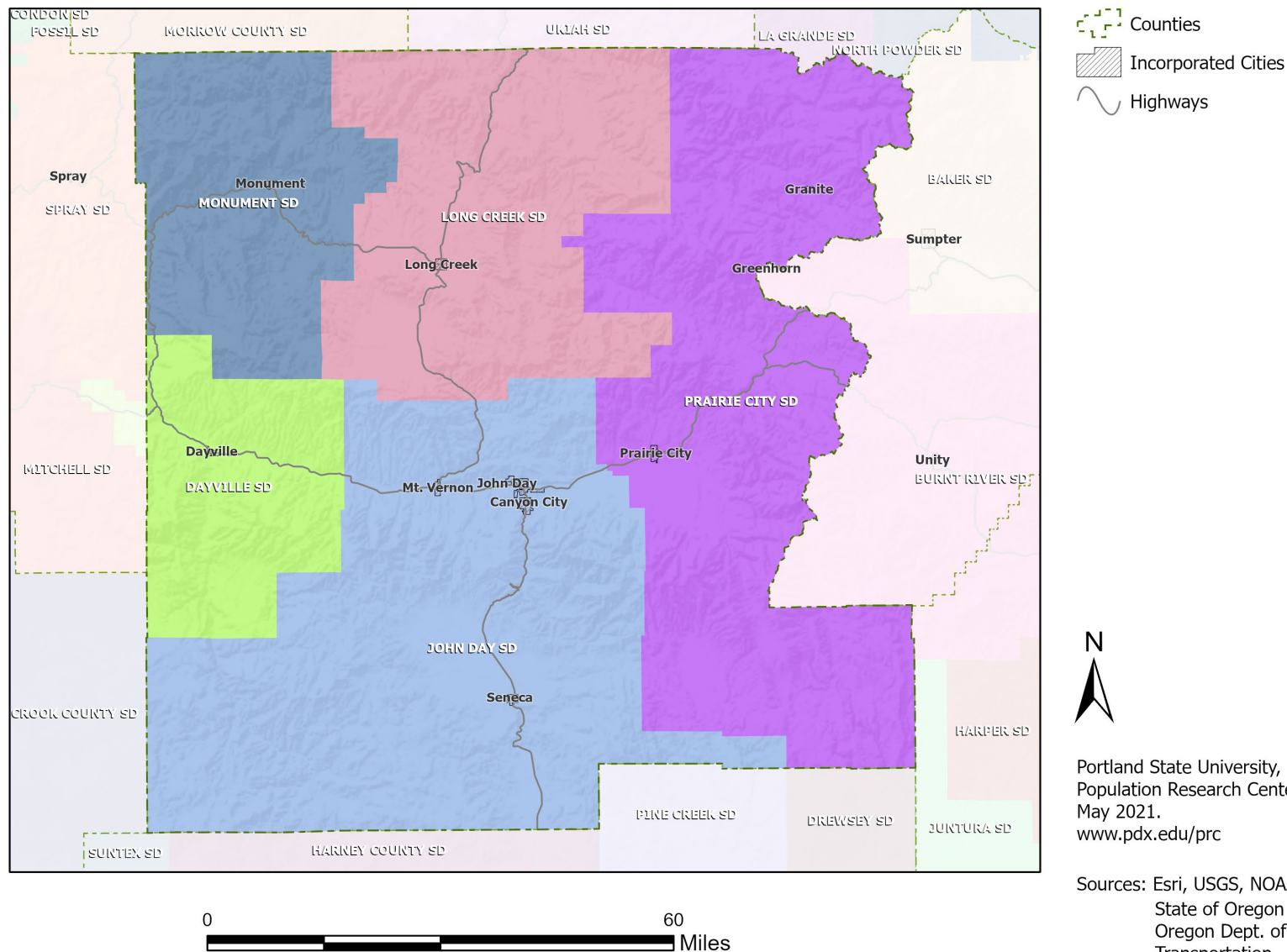
Grant County Employment by Sector by Census County Division

Sector	Oregon	County Total	John Day CCD	Long Creek CCD	Prairie City CCD	Seneca CCD
Total, All Jobs*	1,904,601	2,224	1,862	129	128	105
Goods-Producing	18.6%	27.0%	25.0%	35.7%	23.4%	55.2%
Natural Resources and Mining	2.7%	16.5%	14.2%	29.5%	7.8%	53.3%
Construction	5.9%	4.4%	4.1%	6.2%	9.4%	1.9%
Manufacturing	10.0%	6.0%	6.8%	0.0%	6.3%	0.0%
Service Providing	81.4%	73.0%	75.0%	64.3%	76.6%	44.8%
Trade, Transportation, and Utilities	18.6%	13.7%	14.2%	17.1%	14.8%	0.0%
Information	2.0%	2.3%	1.2%	0.0%	0.0%	26.7%
Financial Activities	4.6%	1.8%	1.9%	0.8%	2.3%	0.0%
Professional and Business Services	13.4%	4.6%	5.5%	0.0%	0.0%	0.0%
Education and Health Services	23.1%	27.2%	27.0%	30.2%	42.2%	9.5%
Leisure and Hospitality	11.4%	10.3%	11.6%	0.0%	8.6%	1.0%
Other Services	4.2%	4.0%	3.8%	12.4%	2.3%	0.0%
Public Administration	4.2%	9.2%	9.8%	3.9%	6.3%	7.6%

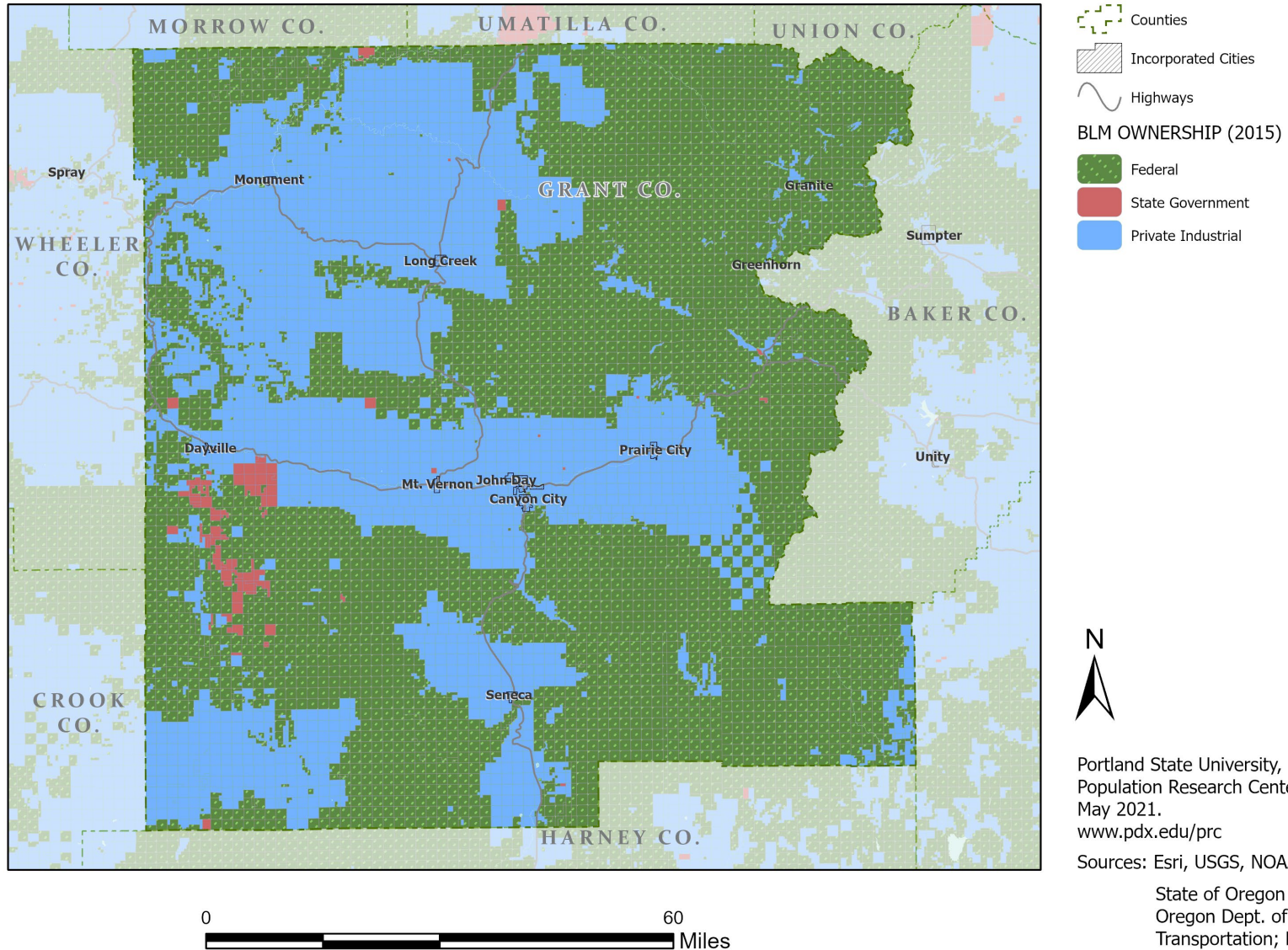
Source: U.S. Census Bureau, LEHD Origin-Destination Employment Statistics, 2018 Q2

* Jobs covered by unemployment insurance and federal workers.

School Districts: Grant County



Land Ownership: Grant County

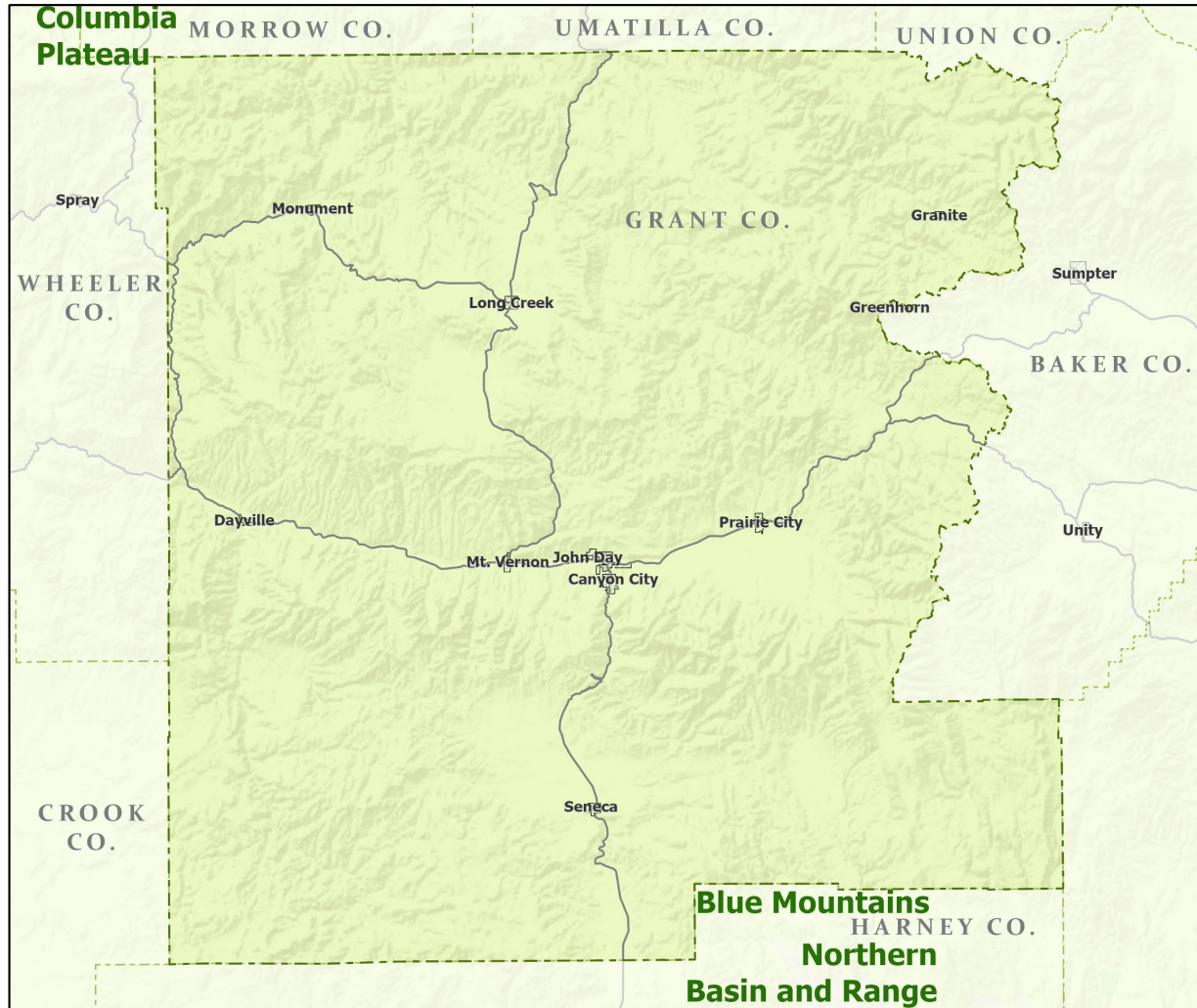


Portland State University,
Population Research Center,
May 2021.
www.pdx.edu/prc

Sources: Esri, USGS, NOAA

State of Oregon GEO;
Oregon Dept. of
Transportation; Bureau of
Land management.

Ecoregions: Grant County



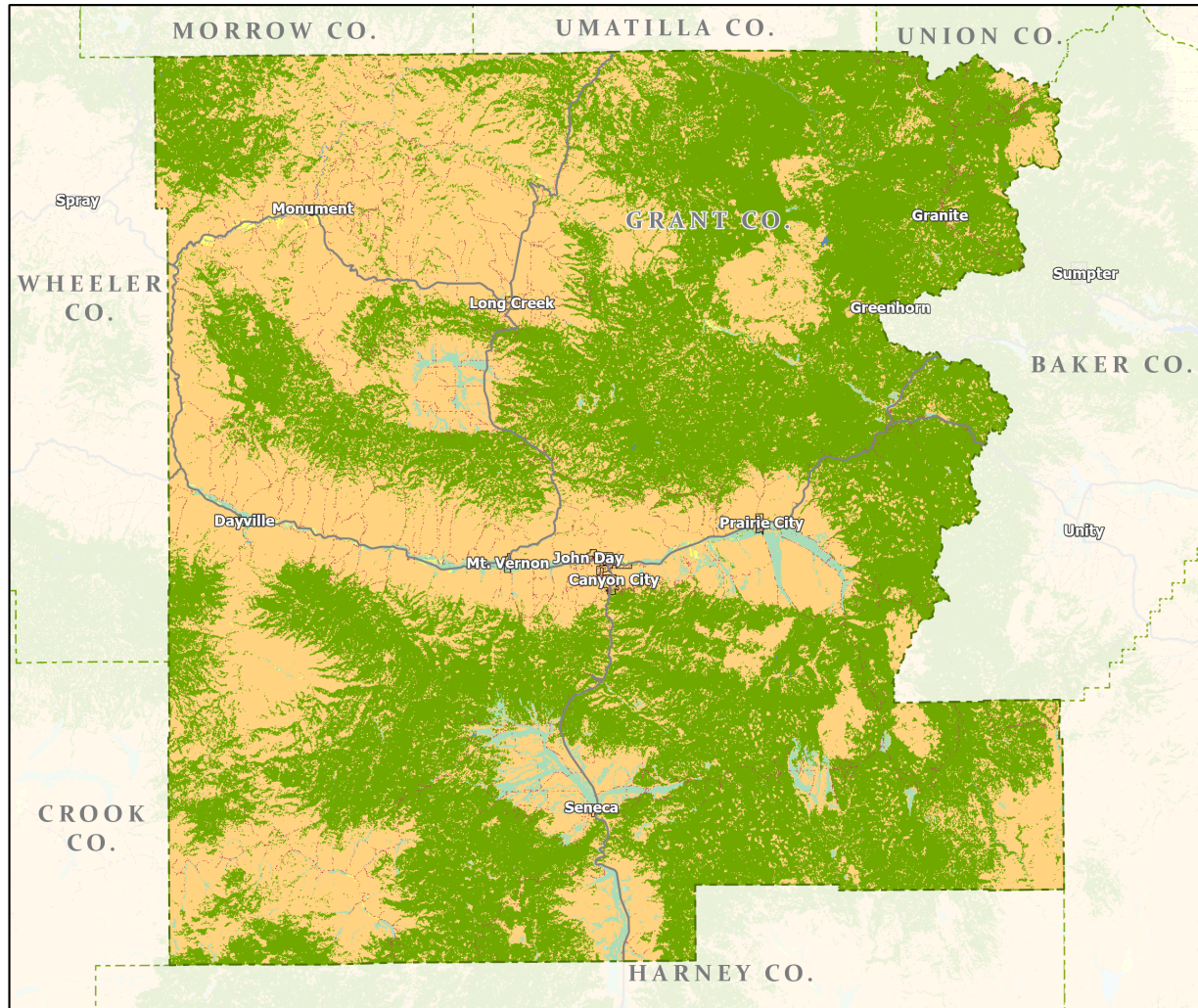
- Counties
- Incorporated Cities
- Highways
- LEVEL III ECOREGIONS OF OREGON (2006)
 - Blue Mountains
 - Columbia Plateau
 - Northern Basin and Range



Portland State University,
Population Research Center,
May 2021.
www.pdx.edu/prc

Sources: Esri, USGS, NOAA
State of Oregon GEO;
Oregon Dept. of
Transportation.

Land Cover: Grant County



- Counties
- Incorporated Cities
- Highways

NATIONAL LAND COVER

- Developed
- Cultivated Crops/Pasture/Hay
- Barren Land
- Forest
- Grasslands/Scrub/Sedge
- Lichens/Moss
- Wetlands
- Perennial Snow/Ice
- Open Water



Portland State University,
Population Research Center,
May 2021.
www.pdx.edu/prc

Sources: Esri, USGS, NOAA
State of Oregon GEO;
Oregon Dept. of
Transportation.