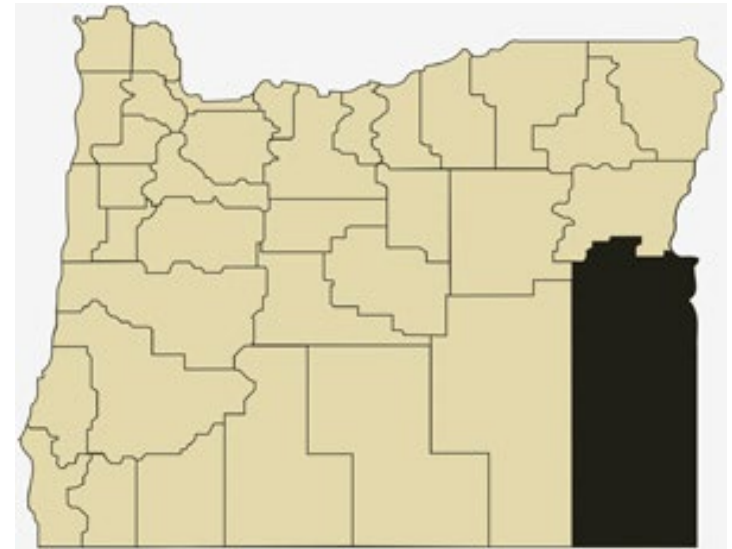


Malheur County Overview

House and Senate Committees on Redistricting

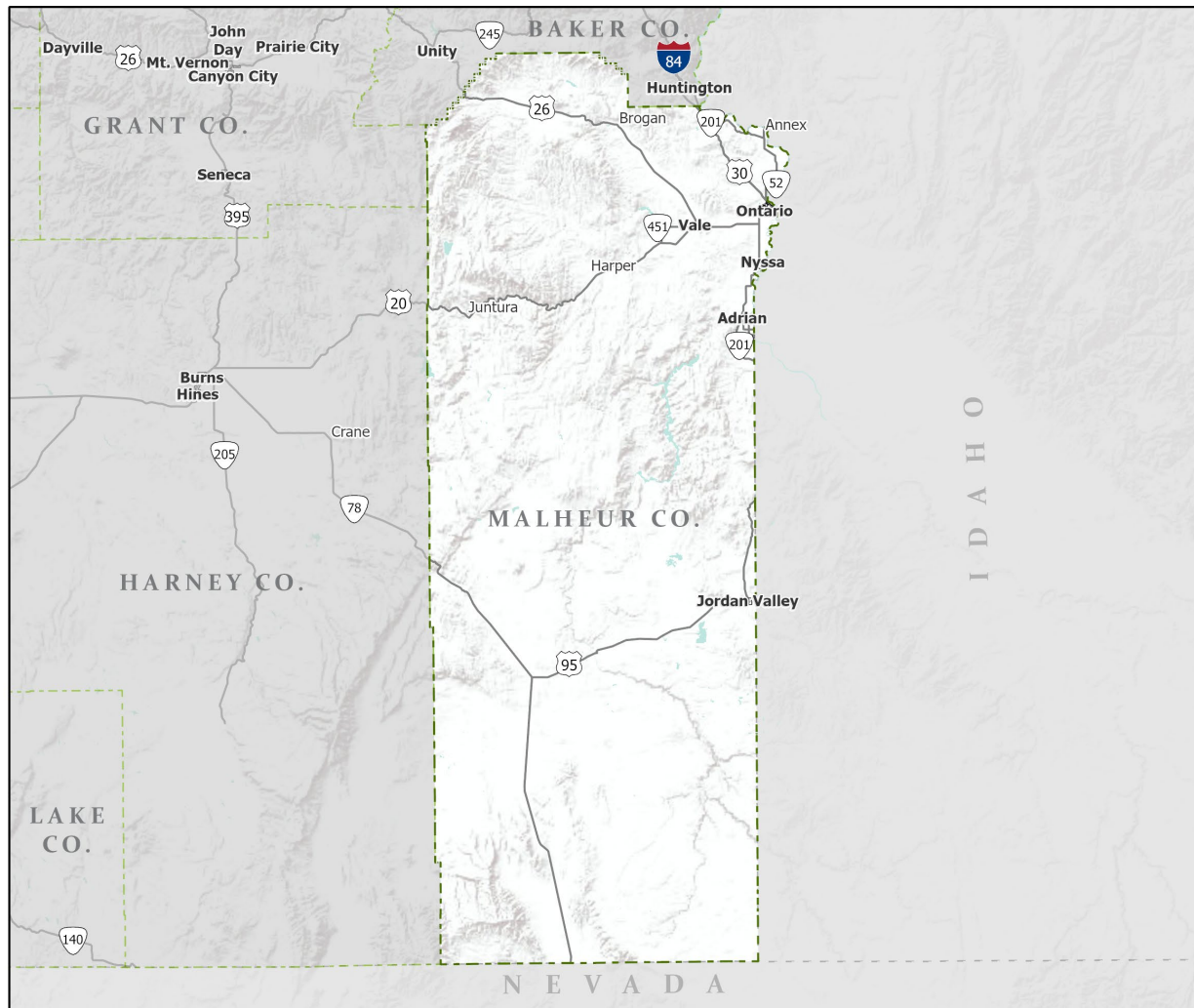
June 9, 2021

July 1, 2020 population estimate	32,105
Population rank	20th
Share of state population	0.8%
Density (per square mile)	3.2
Density rank	29th
Area (square miles)	9,926
Area rank	2nd
Share of state area	10.2%



Sources: PSU Population Research Center; Oregon Blue Book.

Highways: Malheur County



- Counties
- Incorporated Cities
- Highways

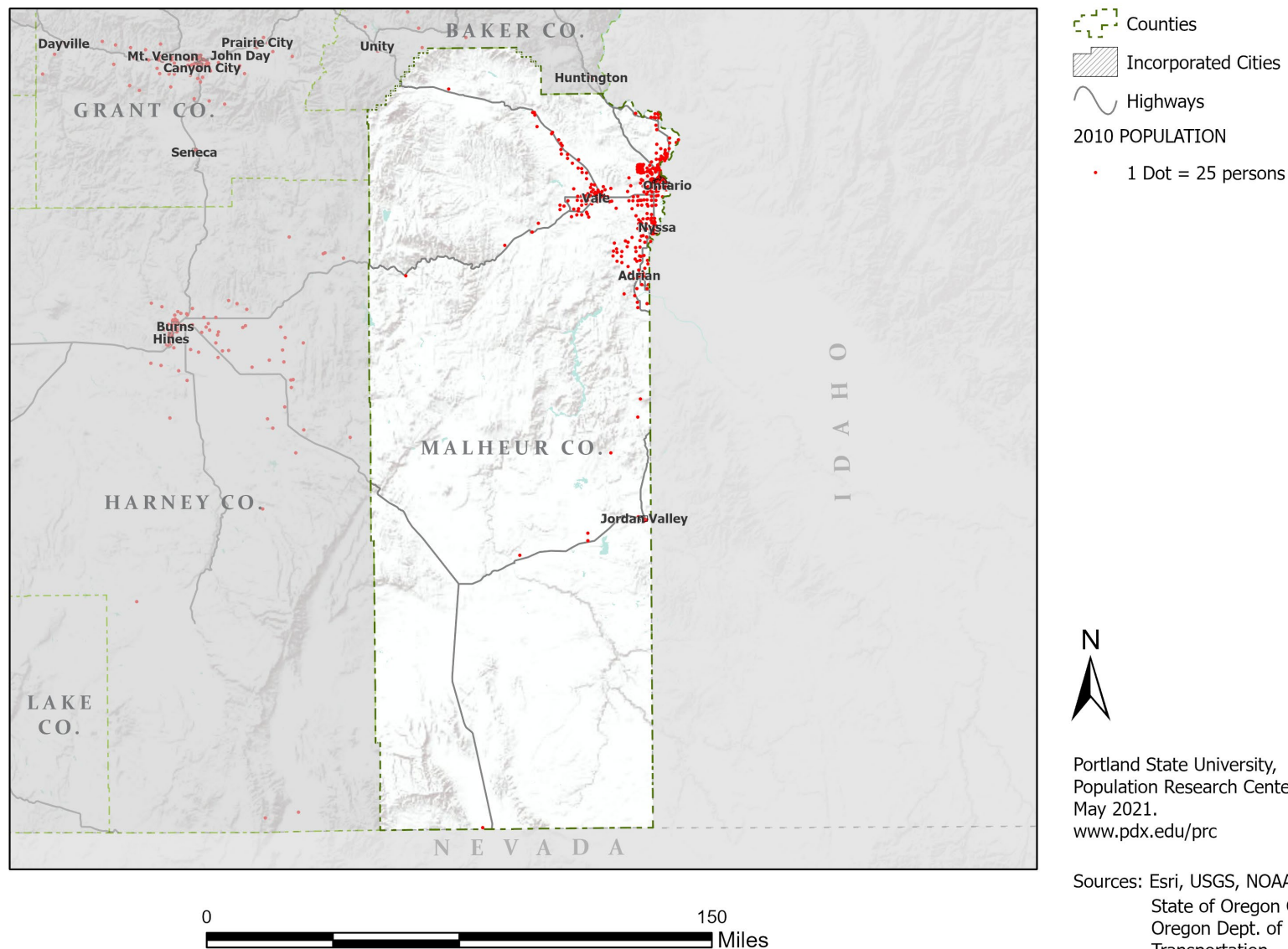


Portland State University,
Population Research Center,
May 2021.
www.pdx.edu/prc

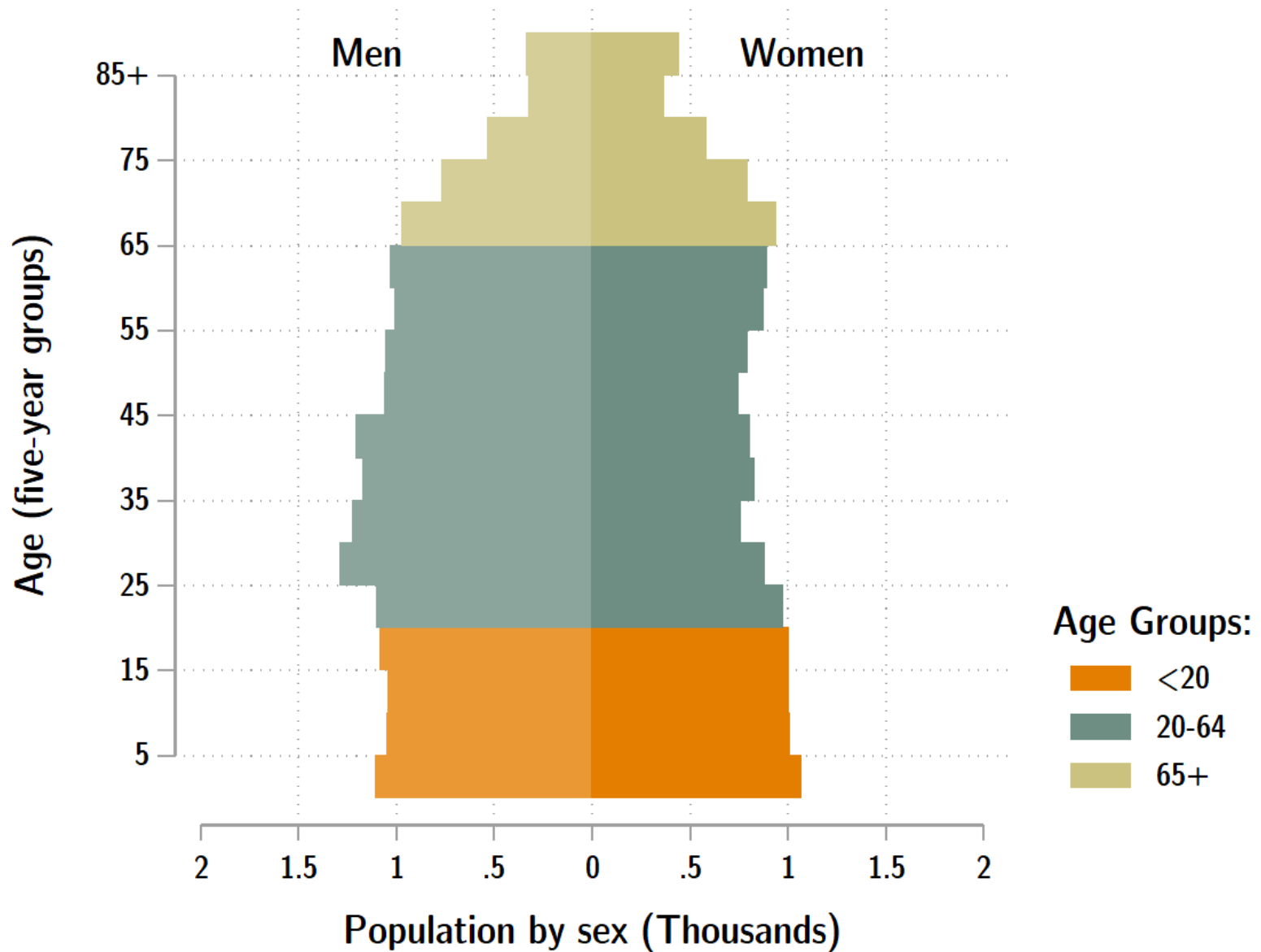
Sources: Esri, USGS, NOAA
State of Oregon GEO;
Oregon Dept. of
Transportation.

0 150 Miles

Population: Malheur County



Malheur population by age & sex: 2020



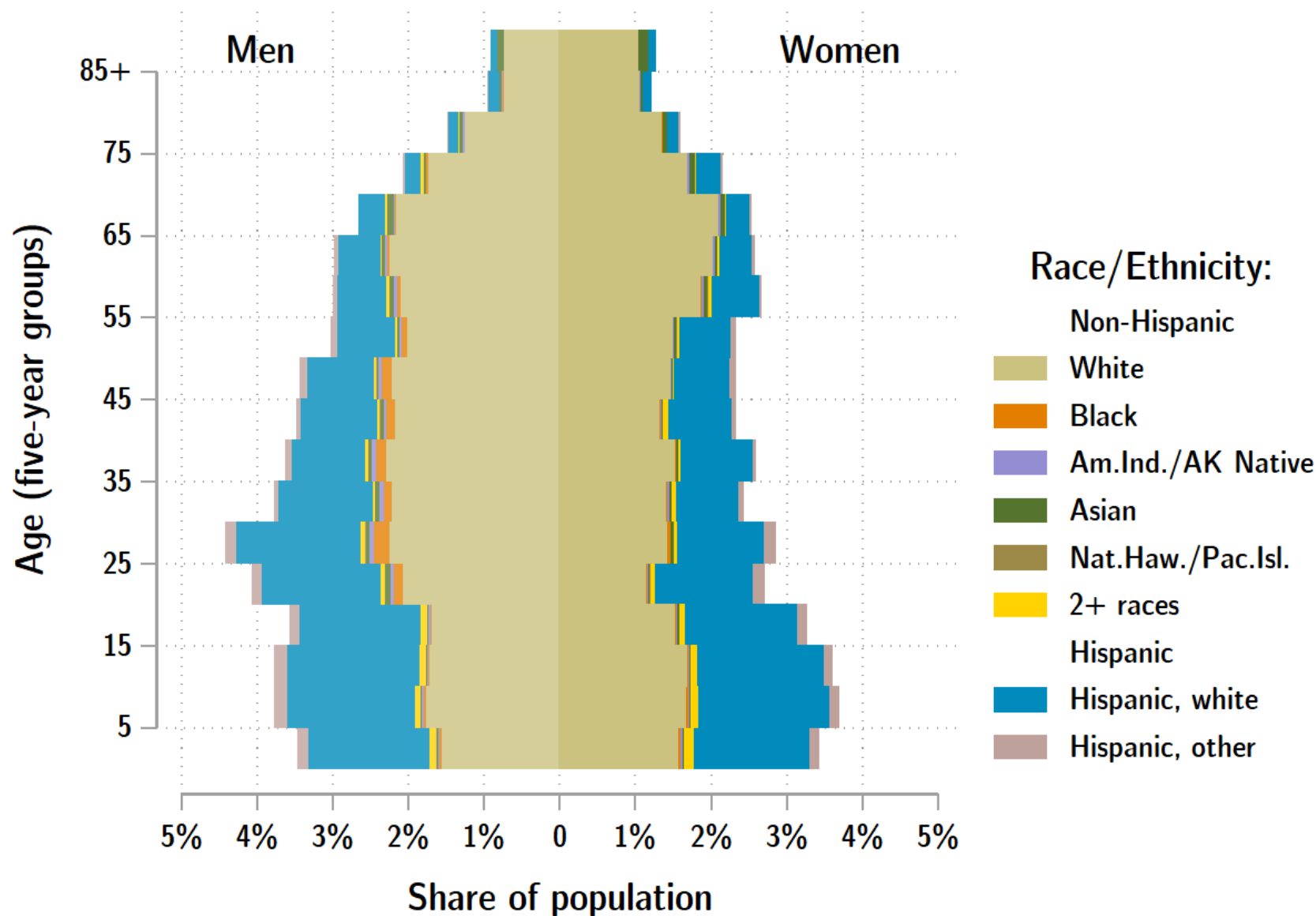
Source: Estimates by Population Research Center, PSU

Age Distribution, Malheur County

Age Group	2020 Estimate	2020 Percent of Total	Oregon 2020 Percent of Total
Total population	32,105	100.0%	100.0%
Under age 5	2,170	6.8%	5.4%
Age 5 to 17	5,283	16.5%	14.9%
Age 18 to 64	18,599	57.9%	61.1%
Age 65 and over	6,053	18.9%	18.6%

Source: PSU Population Research Center July 1, 2020 Population Estimates

Malheur County population by age & sex: 2019



Source: Estimates by US Census Bureau

Race and Ethnicity, Malheur County

	2010 Census	2010 Census Percent	2015-19 ACS Estimate	2015-19 ACS Percent	Oregon 2015-19 ACS Percent
HISPANIC OR LATINO AND RACE					
Total population	31,313	100.0%	30,412	100.0%	100.0%
Hispanic or Latino	9,867	31.5%	10,257	33.7%*	13.0%
Not Hispanic or Latino	21,446	68.5%	20,155	66.3%*	87.0%
White alone	19,906	63.6%	18,591	61.1%*	75.7%
Black or African American alone	331	1.1%	297	1.0%	1.8%
American Indian and Alaska Native alone	235	0.8%	249	0.8%	0.9%
Asian alone	511	1.6%	413	1.4%	4.3%
Native Hawaiian and Other Pacific Islander alone	12	0.0%	30	0.1%	0.4%
Some Other Race alone	21	0.1%	0	0.0%	0.1%
Two or More Races	430	1.4%	575	1.9%*	3.7%

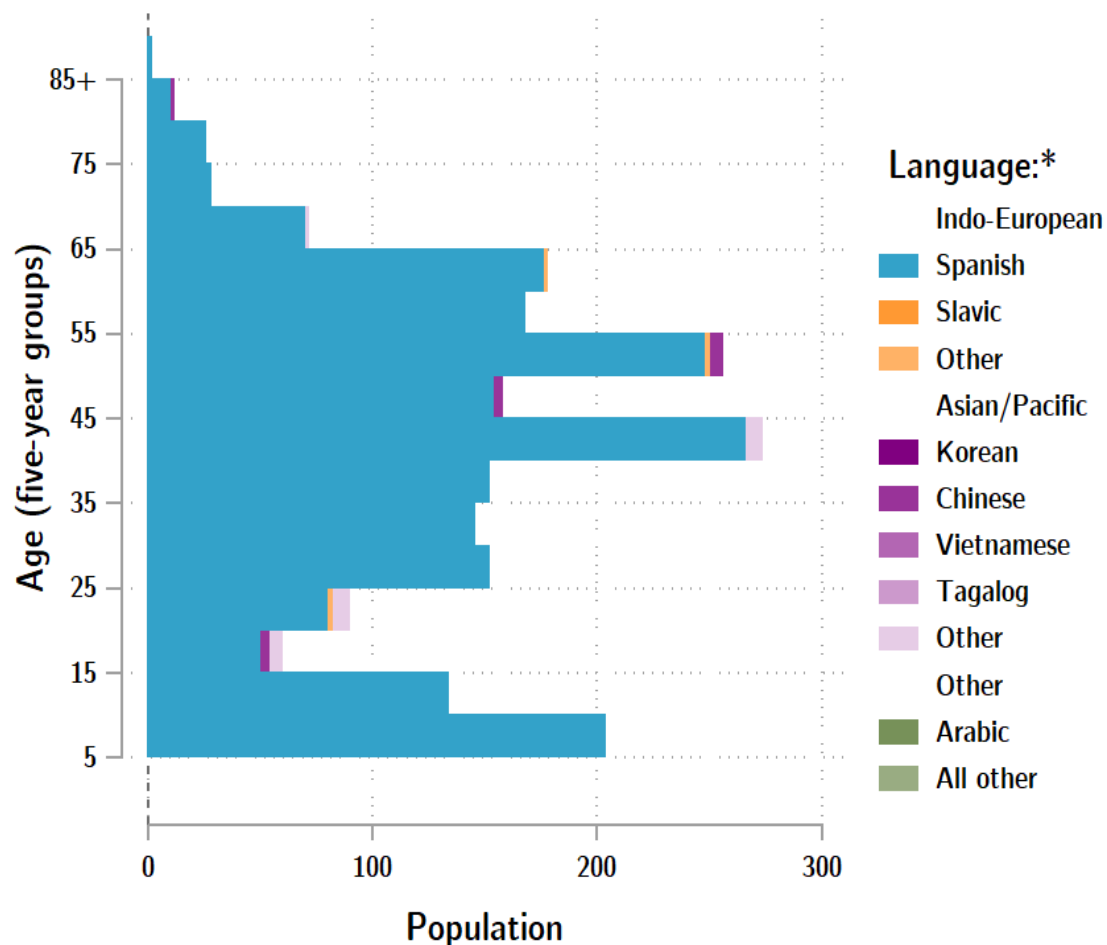
	2010 Census	2010 Census Percent	2015-19 ACS Estimate	2015-19 ACS Percent	Oregon 2015-19 ACS Percent
RACE ALONE OR IN COMBINATION WITH ONE OR MORE OTHER RACES**					
White	25,124	80.2%	28,143	92.5%*	88.8%
Black or African American	458	1.5%	473	1.6%	2.9%
American Indian and Alaska Native	670	2.1%	743	2.4%	3.1%
Asian	700	2.2%	666	2.2%	6.0%
Native Hawaiian and Other Pacific Islander	52	0.2%	165	0.5%	0.8%
Some Other Race	5,246	16.8%	1,191	3.9%*	3.6%

Source: U.S. Census Bureau, 2010 Census and 2019 5-year American Community Survey estimates.

* Difference between 2010 Census and 2015-19 ACS is statistically significant at the 90% confidence level.

** Total may add to more than 100% due to persons identifying as more than one race.

Malheur County population by age & language: 2019



Language Spoken at Home Speak English less than "very well" Malheur County

Languages	Estimate
Total Population Age 5 and Older	28,351
Speaking English less than "very well"	2,182
Spanish	2,062
Russian, Polish, or other Slavic languages	0
Other Indo-European languages	7
Korean	0
Chinese (incl. Cantonese and Mandarin)	14
Vietnamese	6
Tagalog (incl. Filipino)	0
Other Asian and Pacific Island languages	25
Arabic	0
Other languages	68

Source: U.S. Census Bureau American Community Survey 2019 5-year estimates, Table C16001.

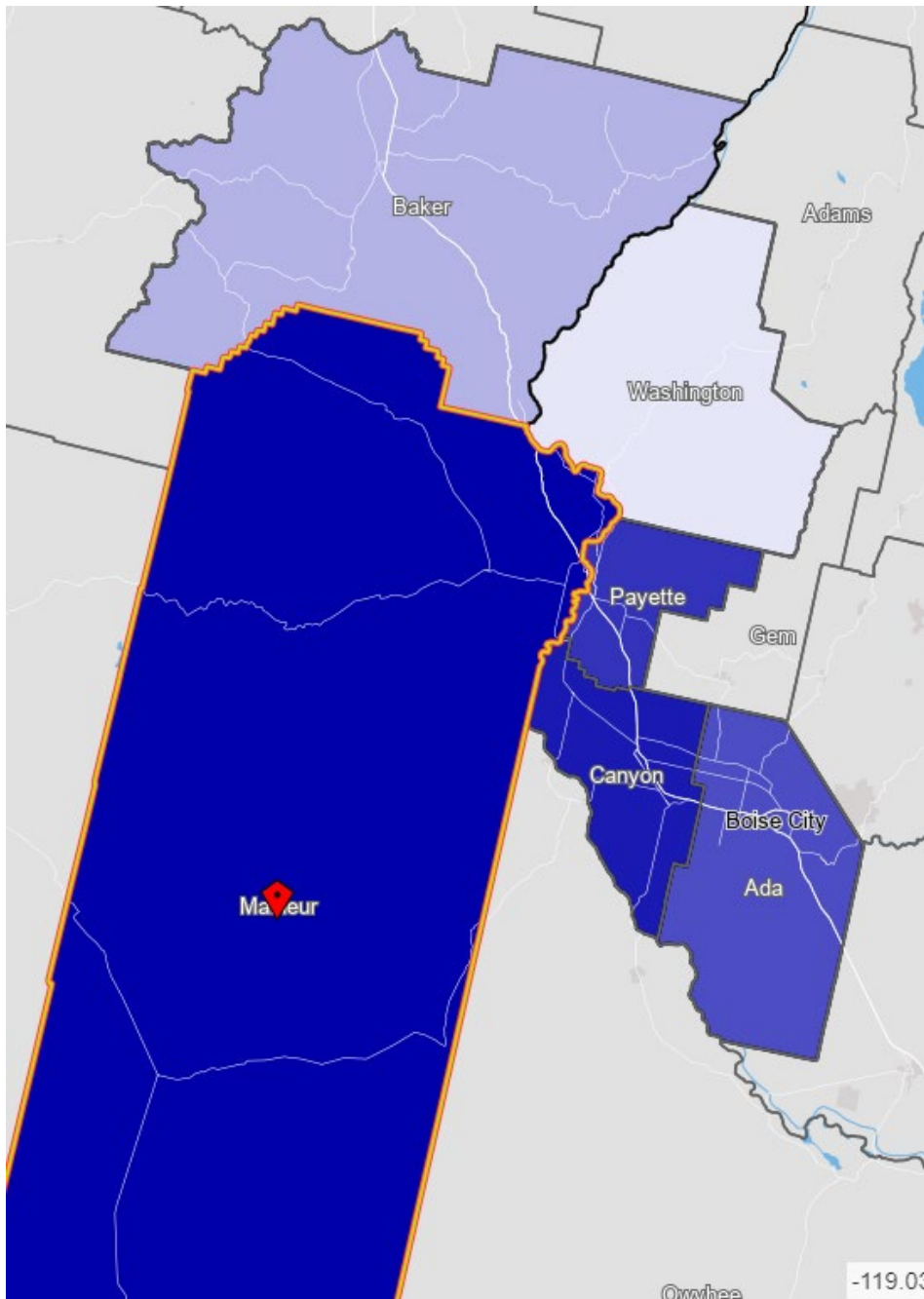
Note: * Languages for persons who speak English less than very well.

Source: ACS tables B16004, C16001, PUMS; PEP estimates; Analysis by PRC, PSU

[Link to Table C16001](#) for all counties, including margins of error.

[Visualization](#) of language data by census tract within county.

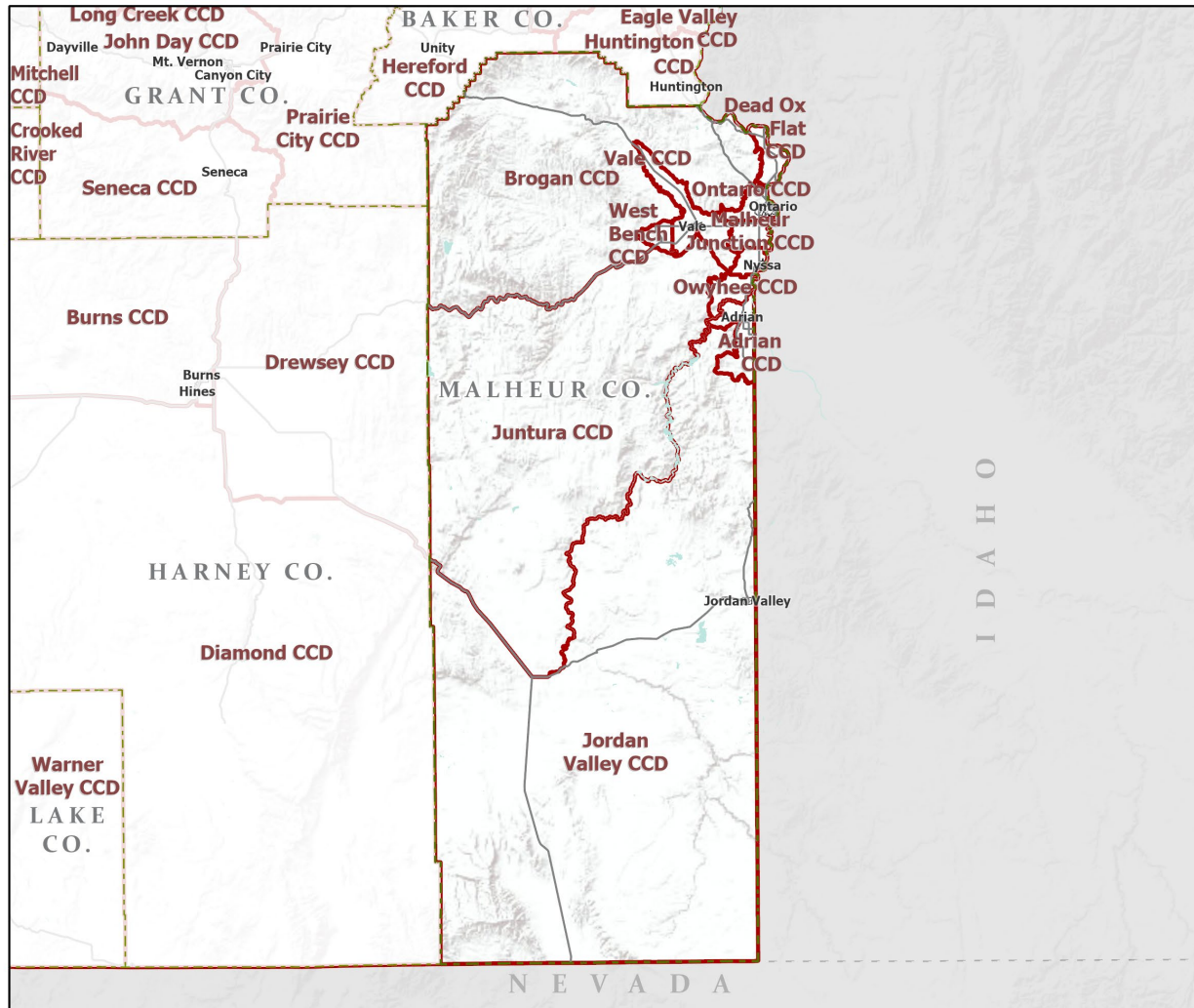
Malheur County Commute Flows



Jobs Counts by Counties Where Workers are Employed - All Jobs

	2018	
	Count	Share
All Counties	10,737	100.0%
Malheur County, OR	6,727	62.7%
Canyon County, ID	776	7.2%
Payette County, ID	750	7.0%
Ada County, ID	254	2.4%
Marion County, OR	214	2.0%
Jackson County, OR	175	1.6%
Multnomah County, OR	149	1.4%
Baker County, OR	132	1.2%
Lane County, OR	129	1.2%
Washington County, ID	119	1.1%
All Other Locations	1,312	12.2%

County Subdivisions (CCDs): Malheur County



- Counties
- Incorporated Cities
- Highways
- County Subdivisions (CCDs)



Portland State University,
Population Research Center,
May 2021.
www.pdx.edu/prc

Sources: Esri, USGS, NOAA
State of Oregon GEO;
Oregon Dept. of
Transportation.



Malheur County Employment by Sector by Census County Division (1 of 2)

Sector	Oregon	County Total	Adrian CCD	Brogan CCD	Dead Ox Flat CCD	Jordan Valley CCD	Juntura CCD	Malheur Junction CCD
Total, All Jobs*	1,904,601	13,826	177	1,220	241	117	23	204
Goods-Producing	18.6%	20.8%	39.5%	8.9%	68.5%	26.5%	65.2%	77.9%
Natural Resources and Mining	2.7%	9.1%	24.9%	7.5%	55.2%	17.1%	47.8%	62.3%
Construction	5.9%	3.5%	5.6%	1.4%	13.3%	9.4%	17.4%	5.9%
Manufacturing	10.0%	8.2%	9.0%	0.1%	0.0%	0.0%	0.0%	9.8%
Service Providing	81.4%	79.2%	60.5%	91.1%	31.5%	73.5%	34.8%	22.1%
Trade, Transportation, and Utilities	18.6%	24.4%	12.4%	0.4%	6.2%	26.5%	0.0%	0.5%
Information	2.0%	1.4%	0.0%	0.0%	0.0%	5.1%	0.0%	0.0%
Financial Activities	4.6%	2.5%	1.1%	0.0%	0.0%	0.0%	0.0%	0.5%
Professional and Business Services	13.4%	3.3%	5.1%	0.1%	2.5%	2.6%	0.0%	8.3%
Education and Health Services	23.1%	24.3%	24.9%	4.3%	14.1%	28.2%	34.8%	3.9%
Leisure and Hospitality	11.4%	9.2%	10.7%	1.1%	8.7%	7.7%	0.0%	0.0%
Other Services	4.2%	3.0%	4.0%	0.6%	0.0%	3.4%	0.0%	2.5%
Public Administration	4.2%	11.2%	2.3%	84.7%	0.0%	0.0%	0.0%	6.4%

Continued on next slide

Source: U.S. Census Bureau, LEHD Origin-Destination Employment Statistics, 2018 Q2

* Jobs covered by unemployment insurance and federal workers.

Malheur County Employment by Sector by Census County Division (2 of 2)

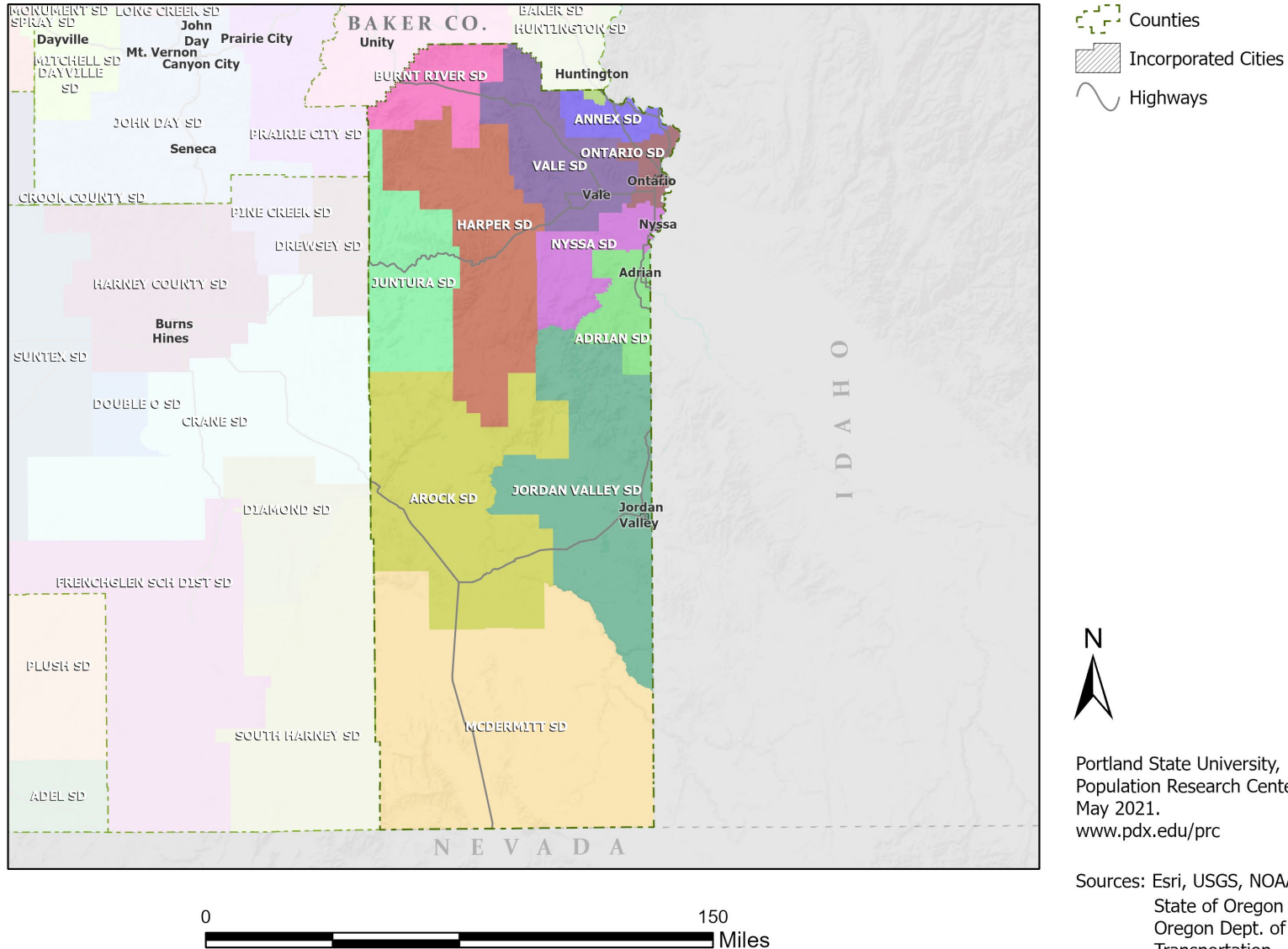
Continued from previous slide

Sector	Oregon	County Total	Nyssa CCD	Ontario CCD	Owyhee CCD	Vale CCD	West Bench CCD
Total, All Jobs*	1,904,601	13,826	1,081	9,153	136	1,302	172
Goods-Producing	18.6%	20.8%	23.4%	16.6%	83.1%	23.7%	83.1%
Natural Resources and Mining	2.7%	9.1%	18.5%	2.4%	74.3%	13.7%	80.2%
Construction	5.9%	3.5%	2.4%	2.5%	8.8%	9.5%	2.9%
Manufacturing	10.0%	8.2%	2.5%	11.7%	0.0%	0.5%	0.0%
Service Providing	81.4%	79.2%	76.6%	83.4%	16.9%	76.3%	16.9%
Trade, Transportation, and Utilities	18.6%	24.4%	31.5%	28.7%	4.4%	23.6%	8.1%
Information	2.0%	1.4%	0.0%	2.0%	0.0%	0.7%	0.0%
Financial Activities	4.6%	2.5%	4.0%	3.1%	0.0%	1.2%	0.0%
Professional and Business Services	13.4%	3.3%	6.0%	3.2%	2.2%	3.4%	8.7%
Education and Health Services	23.1%	24.3%	25.3%	29.3%	0.0%	17.0%	0.0%
Leisure and Hospitality	11.4%	9.2%	3.0%	12.3%	0.0%	3.9%	0.0%
Other Services	4.2%	3.0%	4.9%	3.0%	10.3%	3.3%	0.0%
Public Administration	4.2%	11.2%	1.9%	1.9%	0.0%	23.3%	0.0%

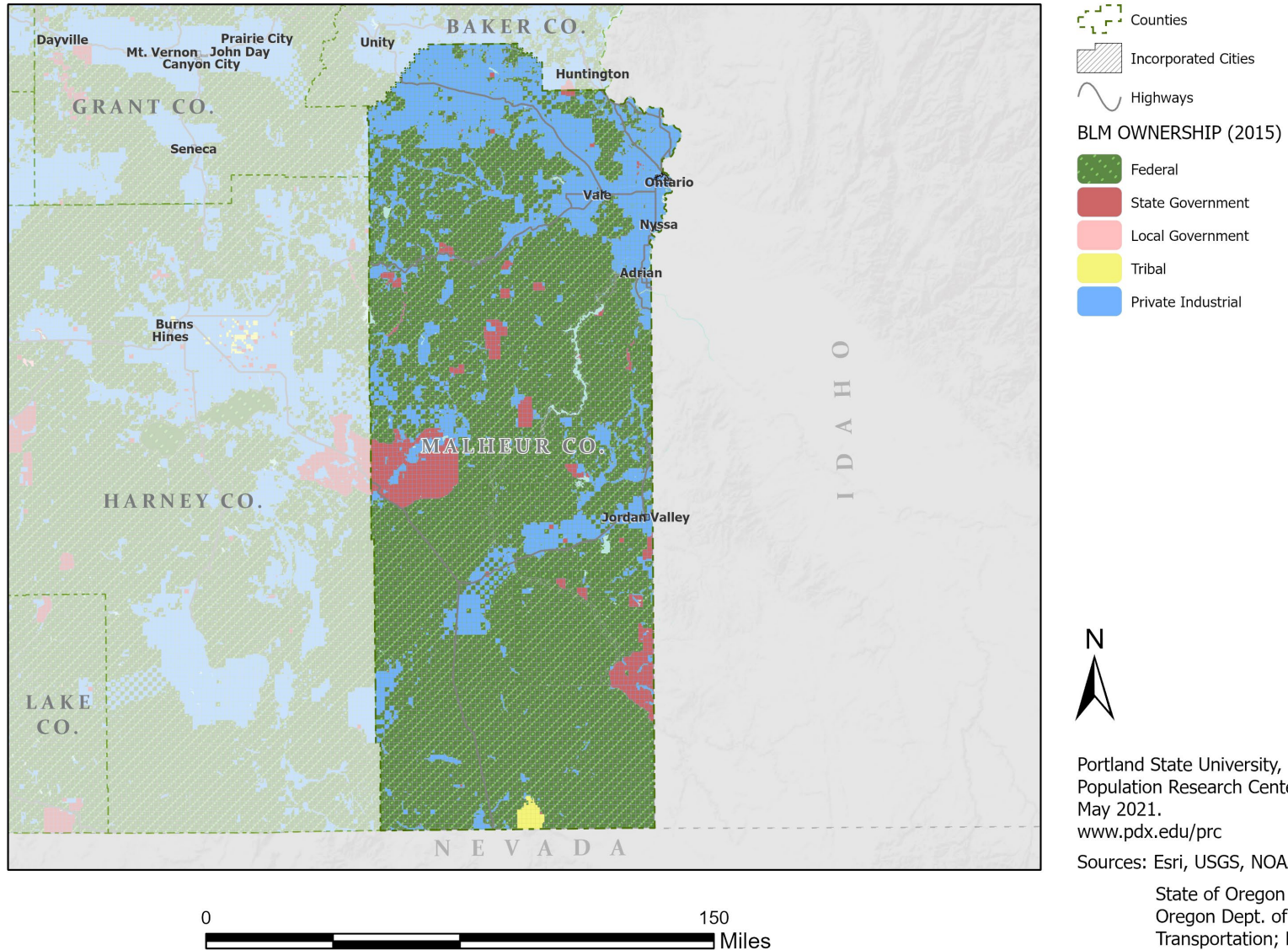
Source: U.S. Census Bureau, LEHD Origin-Destination Employment Statistics, 2018 Q2

* Jobs covered by unemployment insurance and federal workers.

School Districts: Malheur County



Land Ownership: Malheur County

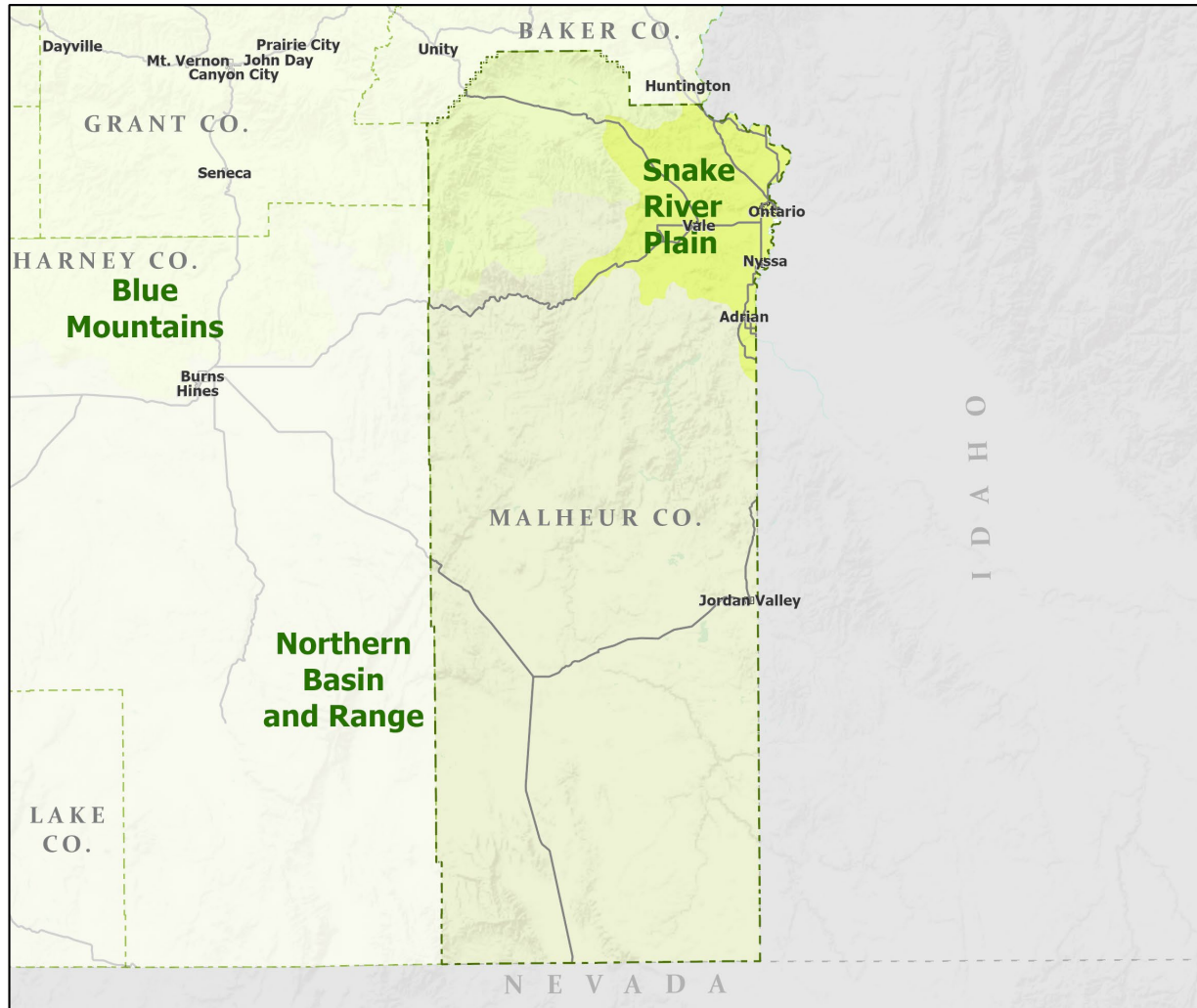


Portland State University,
Population Research Center,
May 2021.
www.pdx.edu/prc

Sources: Esri, USGS, NOAA

State of Oregon GEO;
Oregon Dept. of
Transportation; Bureau of
Land management.

Ecoregions: Malheur County

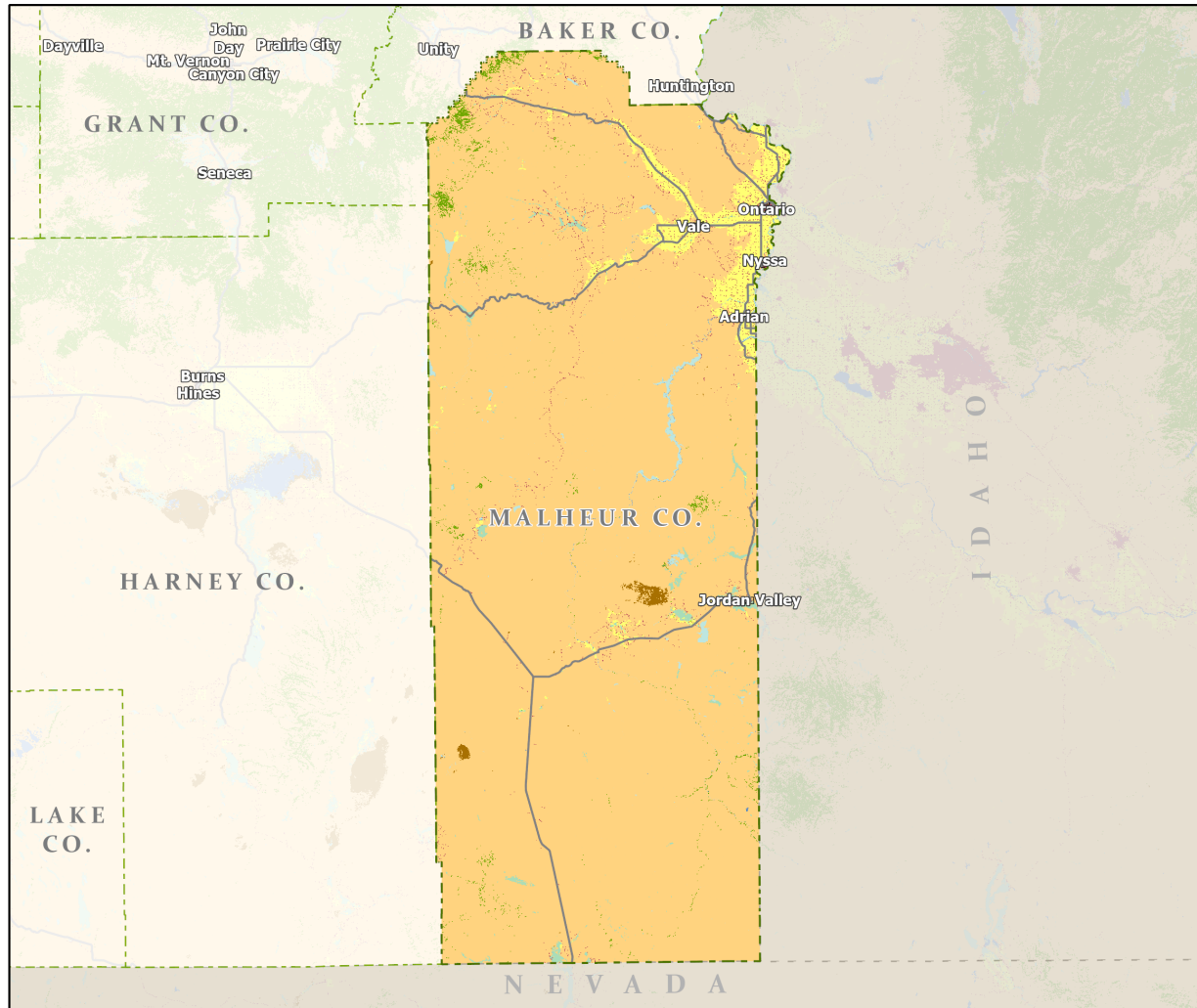


Portland State University,
Population Research Center,
May 2021.
www.pdx.edu/prc

Sources: Esri, USGS, NOAA
State of Oregon GEO;
Oregon Dept. of
Transportation.



Land Cover: Malheur County



Counties

Incorporated Cities

Highways

NATIONAL LAND COVER

Developed

Cultivated Crops/Pasture/Hay

Barren Land

Forest

Grasslands/Scrub/Sedge

Lichens/Moss

Wetlands

Perennial Snow/Ice

Open Water



Portland State University,
Population Research Center,
May 2021.
www.pdx.edu/prc

Sources: Esri, USGS, NOAA
State of Oregon GEO;
Oregon Dept. of
Transportation.

0 150 Miles