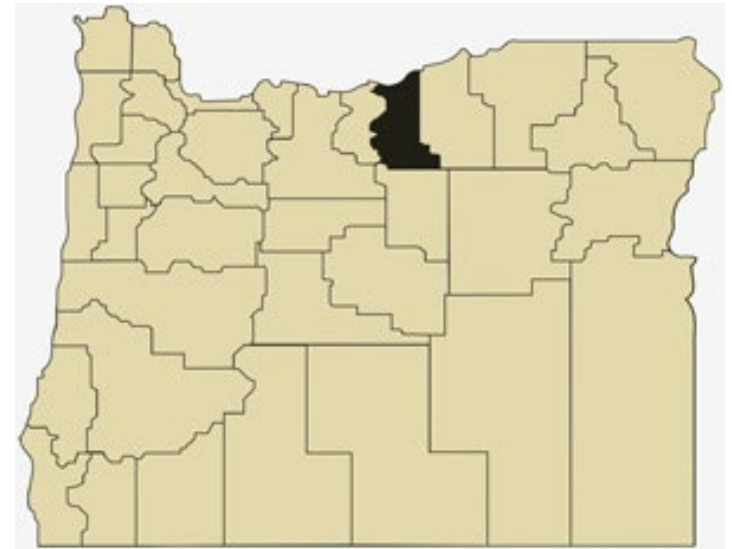


# Gilliam County Overview

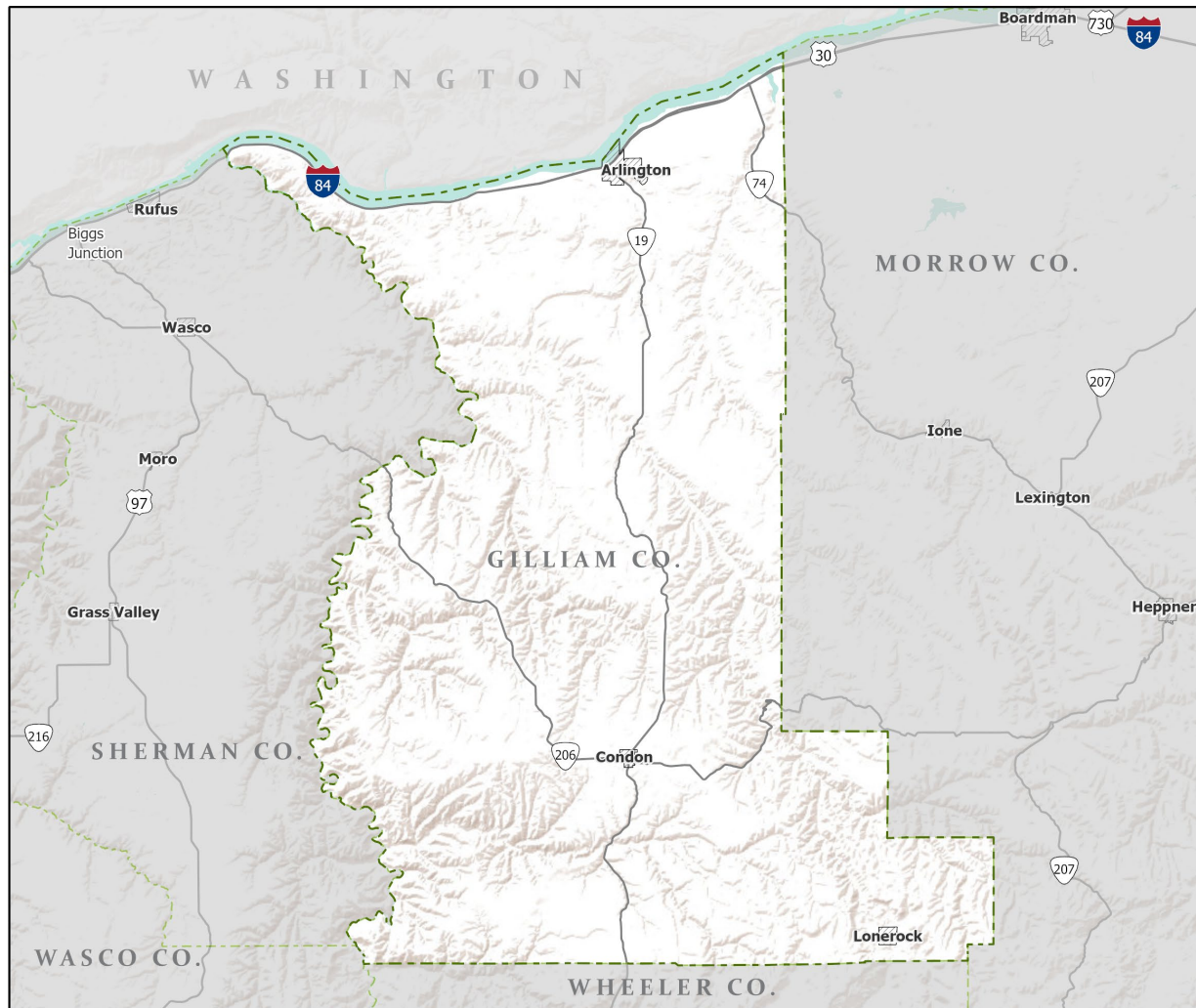
## House and Senate Committees on Redistricting June 9, 2021

|                                  |       |
|----------------------------------|-------|
| July 1, 2020 population estimate | 1,990 |
| Population rank                  | 34th  |
| Share of state population        | <0.1% |
| Density (per square mile)        | 1.6   |
| Density rank                     | 32nd  |
| Area (square miles)              | 1,223 |
| Area rank                        | 24th  |
| Share of state area              | 1.3%  |



Sources: PSU Population Research Center; Oregon Blue Book.

# Highways: Gilliam County



- Counties
- Incorporated Cities
- Highways



Portland State University,  
Population Research Center,  
May 2021.  
[www.pdx.edu/prc](http://www.pdx.edu/prc)

Sources: Esri, USGS, NOAA  
State of Oregon GEO;  
Oregon Dept. of  
Transportation.

# Population: Gilliam County



- Counties
- Incorporated Cities
- Highways
- 2010 POPULATION
  - 1 Dot = 25 persons

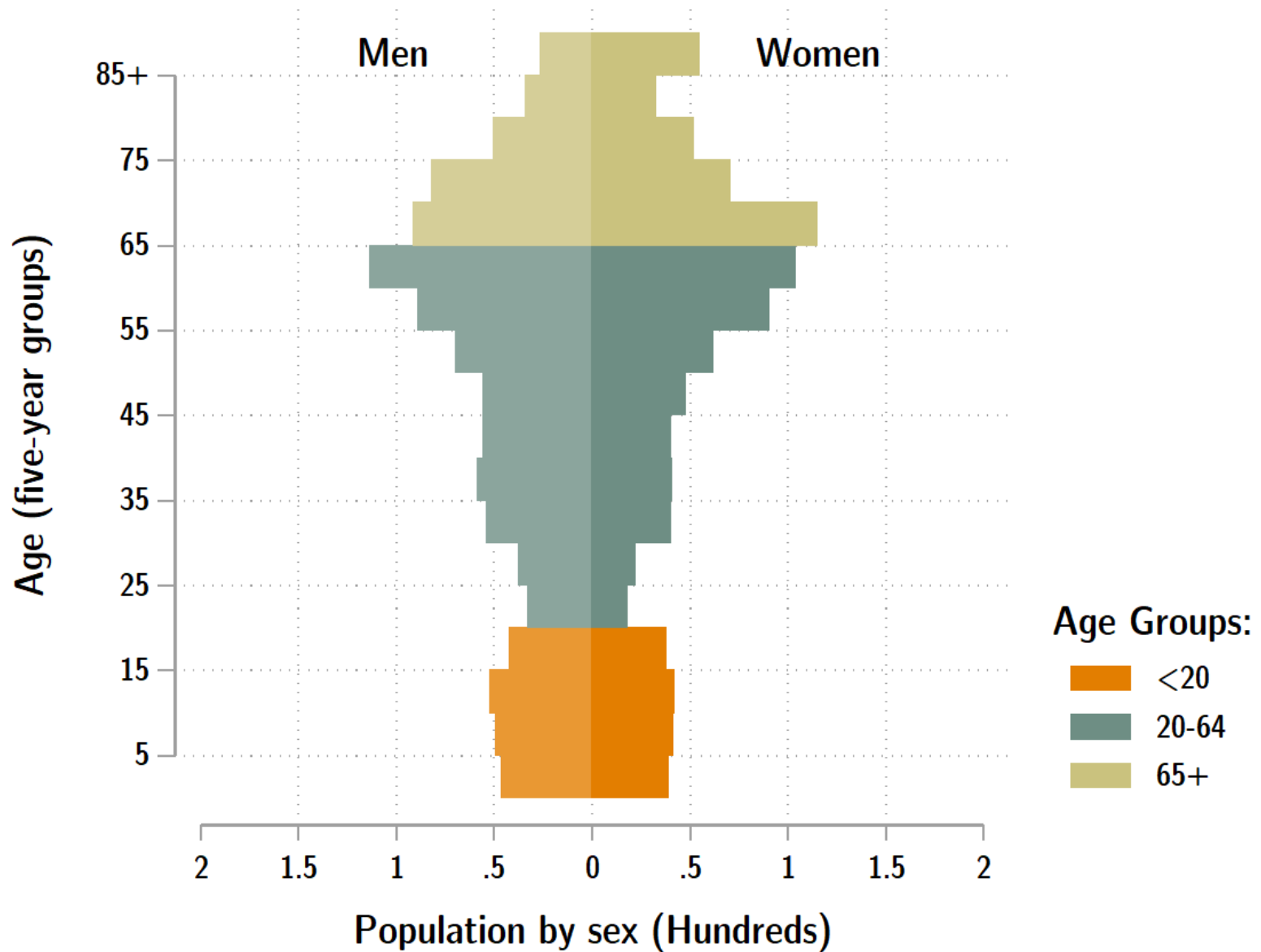


Portland State University,  
Population Research Center,  
May 2021.  
[www.pdx.edu/prc](http://www.pdx.edu/prc)

Sources: Esri, USGS, NOAA  
State of Oregon GEO;  
Oregon Dept. of  
Transportation.

0 40 Miles

## Gilliam population by age & sex: 2020



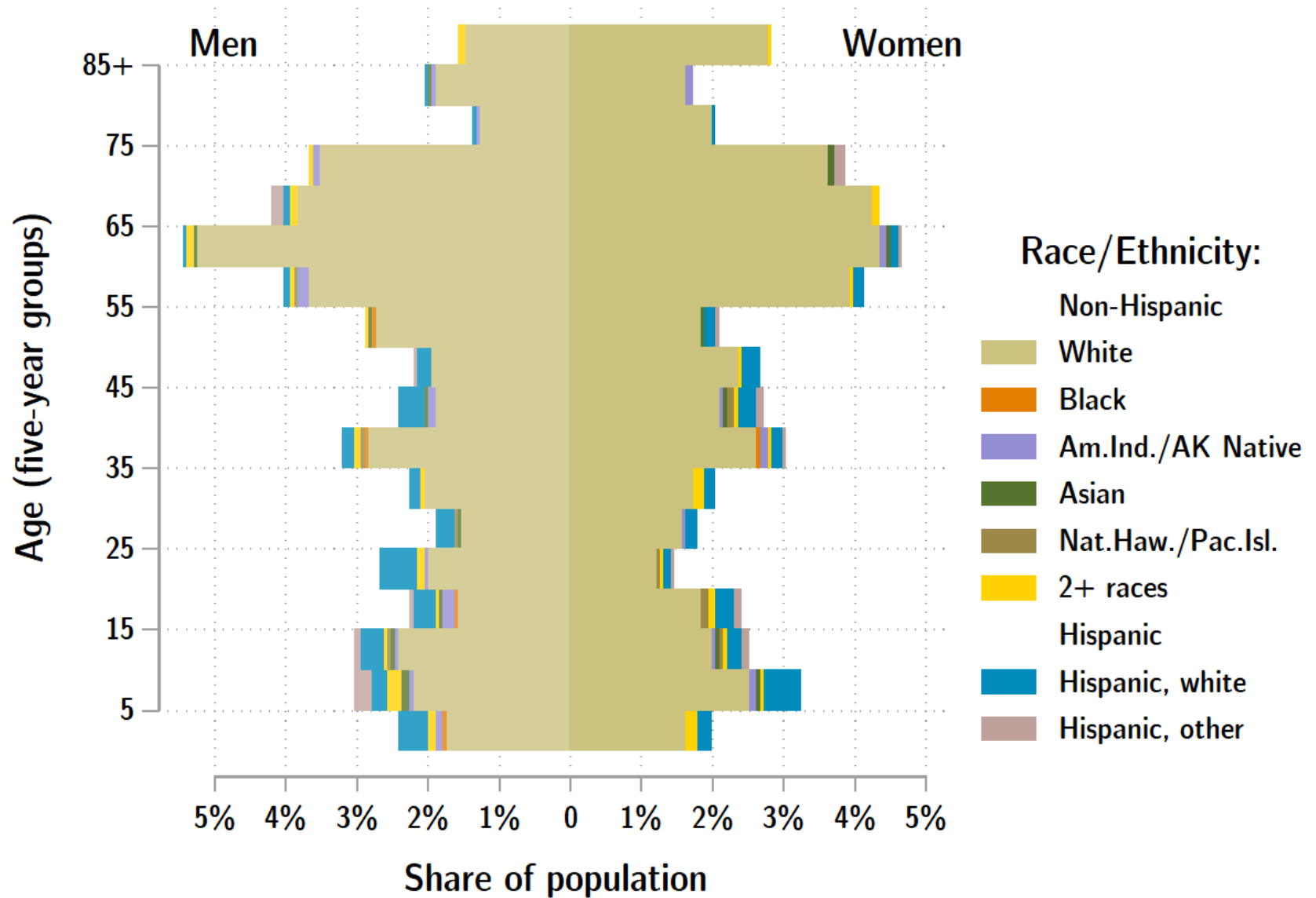
Source: Estimates by Population Research Center, PSU

# Age Distribution, Gilliam County

| Age Group        | 2020<br>Estimate | 2020<br>Percent of<br>Total | Oregon<br>2020<br>Percent of<br>Total |
|------------------|------------------|-----------------------------|---------------------------------------|
| Total population | 1,990            | 100.0%                      | 100.0%                                |
| Under age 5      | 85               | 4.3%                        | 5.4%                                  |
| Age 5 to 17      | 244              | 12.3%                       | 14.9%                                 |
| Age 18 to 64     | 1,052            | 52.8%                       | 61.1%                                 |
| Age 65 and over  | 609              | 30.6%                       | 18.6%                                 |

Source: PSU Population Research Center July 1, 2020 Population Estimates

# Gilliam County population by age & sex: 2019



Source: Estimates by US Census Bureau

# Race and Ethnicity, Gilliam County

|  | 2010<br>Census | 2010<br>Census<br>Percent | 2015-19<br>ACS<br>Estimate | 2015-19<br>ACS<br>Percent | Oregon<br>2015-19<br>ACS<br>Percent |
|--|----------------|---------------------------|----------------------------|---------------------------|-------------------------------------|
| <b>HISPANIC OR LATINO AND RACE</b>               |                |                           |                            |                           |                                     |
| Total population                                 | 1,871          | 100.0%                    | 1,878                      | 100.0%                    | 100.0%                              |
| Hispanic or Latino                               | 88             | 4.7%                      | 115                        | 6.1%*                     | 13.0%                               |
| Not Hispanic or Latino                           | 1,783          | 95.3%                     | 1,763                      | 93.9%*                    | 87.0%                               |
| White alone                                      | 1,725          | 92.2%                     | 1,652                      | 88.0%*                    | 75.7%                               |
| Black or African American alone                  | 3              | 0.2%                      | 0                          | 0.0%                      | 1.8%                                |
| American Indian and Alaska Native alone          | 18             | 1.0%                      | 74                         | 3.9%*                     | 0.9%                                |
| Asian alone                                      | 3              | 0.2%                      | 15                         | 0.8%                      | 4.3%                                |
| Native Hawaiian and Other Pacific Islander alone | 13             | 0.7%                      | 13                         | 0.7%                      | 0.4%                                |
| Some Other Race alone                            | 0              | 0.0%                      | 0                          | 0.0%                      | 0.1%                                |
| Two or More Races                                | 21             | 1.1%                      | 9                          | 0.5%*                     | 3.7%                                |

|  | 2010<br>Census | 2010<br>Census<br>Percent | 2015-19<br>ACS<br>Estimate | 2015-19<br>ACS<br>Percent | Oregon<br>2015-19<br>ACS<br>Percent |
|--|----------------|---------------------------|----------------------------|---------------------------|-------------------------------------|
| <b>RACE ALONE OR IN COMBINATION WITH<br/>ONE OR MORE OTHER RACES**</b> |                |                           |                            |                           |                                     |
| White  | 1,804          | 96.4%                     | 1,764                      | 93.9%*                    | 88.8%                               |
| Black or African American  | 5              | 0.3%                      | 0                          | 0.0%                      | 2.9%                                |
| American Indian and Alaska Native                                      | 44             | 2.4%                      | 104                        | 5.5%*                     | 3.1%                                |
| Asian  | 5              | 0.3%                      | 24                         | 1.3%                      | 6.0%                                |
| Native Hawaiian and Other Pacific Islander                             | 14             | 0.7%                      | 13                         | 0.7%                      | 0.8%                                |
| Some Other Race  | 26             | 1.4%                      | 12                         | 0.6%                      | 3.6%                                |

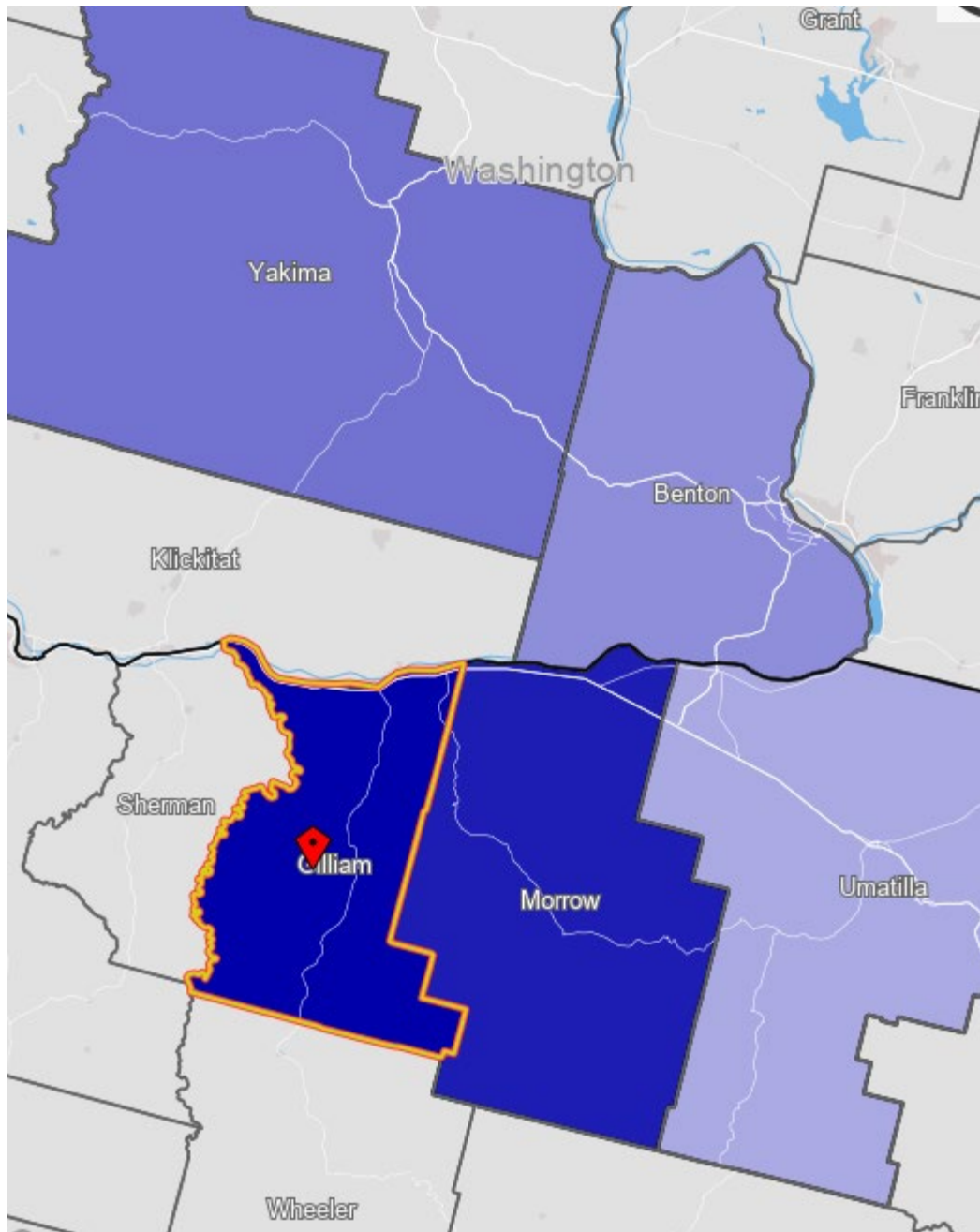
Source: U.S. Census Bureau, 2010 Census and 2019 5-year American Community Survey estimates.

\* Difference between 2010 Census and 2015-19 ACS is statistically significant at the 90% confidence level.

\*\* Total may add to more than 100% due to persons identifying as more than one race.



# Gilliam County Commute Flows



**Jobs Counts by Counties Where Workers  
are Employed - All Jobs**

|                                       | 2018  |        |
|---------------------------------------|-------|--------|
|                                       | Count | Share  |
| <a href="#">All Counties</a>          | 831   | 100.0% |
| <a href="#">Gilliam County, OR</a>    | 440   | 52.9%  |
| <a href="#">Morrow County, OR</a>     | 56    | 6.7%   |
| <a href="#">Multnomah County, OR</a>  | 46    | 5.5%   |
| <a href="#">Washington County, OR</a> | 29    | 3.5%   |
| <a href="#">Yakima County, WA</a>     | 25    | 3.0%   |
| <a href="#">Deschutes County, OR</a>  | 23    | 2.8%   |
| <a href="#">Benton County, WA</a>     | 23    | 2.8%   |
| <a href="#">Umatilla County, OR</a>   | 20    | 2.4%   |
| <a href="#">Clackamas County, OR</a>  | 19    | 2.3%   |
| <a href="#">Marion County, OR</a>     | 16    | 1.9%   |
| <b>All Other Locations</b>            | 134   | 16.1%  |



# County Subdivisions (CCDs): Gilliam County



- Counties
- Incorporated Cities
- Highways
- County Subdivisions (CCDs)



Portland State University,  
Population Research Center,  
May 2021.  
[www.pdx.edu/prc](http://www.pdx.edu/prc)

Sources: Esri, USGS, NOAA  
State of Oregon GEO;  
Oregon Dept. of  
Transportation.

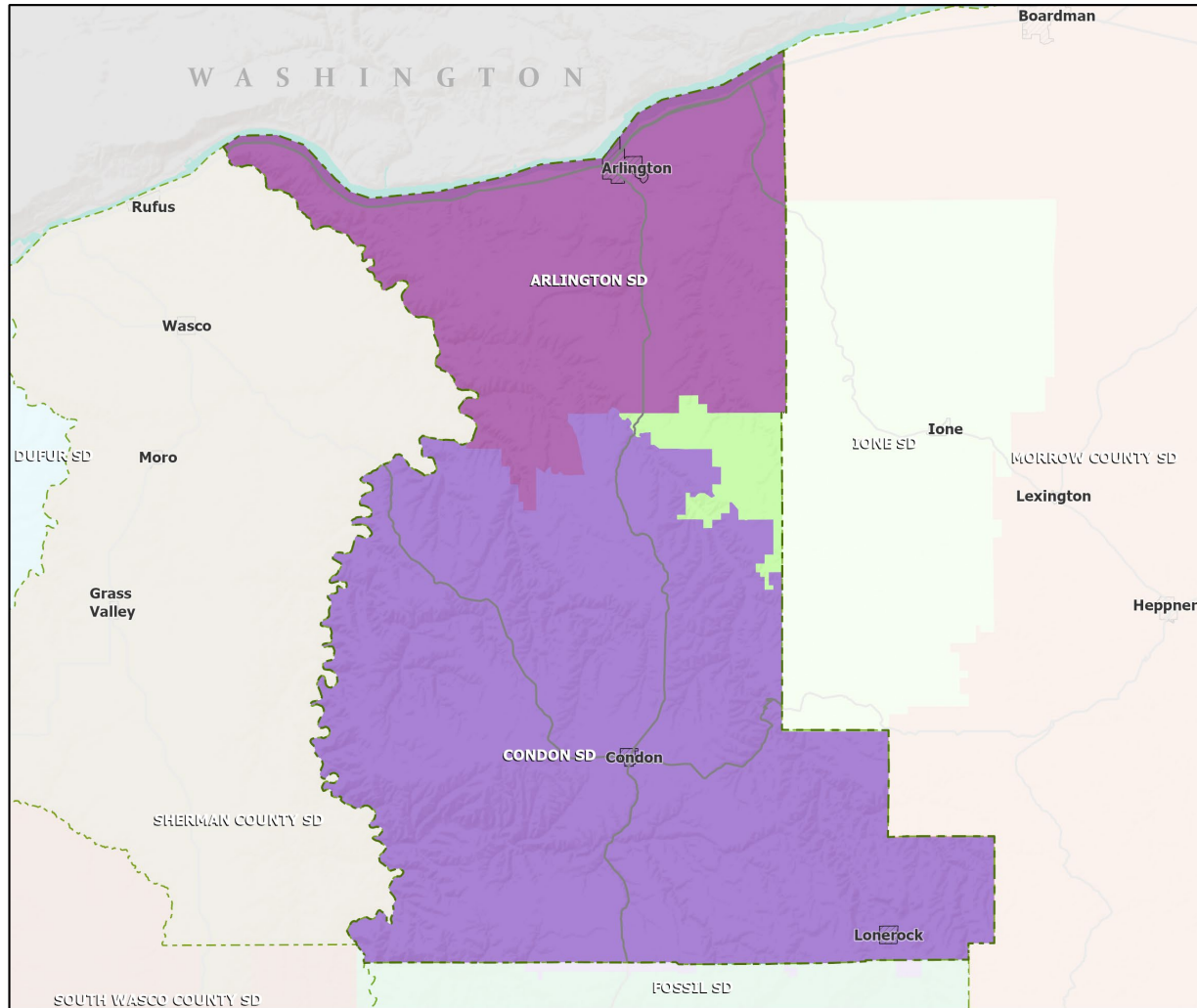
# Gilliam County Employment by Sector by Census County Division

| Sector                               | Oregon    | County<br>Total | Arlington<br>CCD | Condon<br>CCD |
|--------------------------------------|-----------|-----------------|------------------|---------------|
| Total, All Jobs*                     | 1,904,601 | 789             | 443              | 346           |
| Goods-Producing                      | 18.6%     | 12.2%           | 13.3%            | 10.7%         |
| Natural Resources and Mining         | 2.7%      | 6.5%            | 5.2%             | 8.1%          |
| Construction                         | 5.9%      | 3.4%            | 4.1%             | 2.6%          |
| Manufacturing                        | 10.0%     | 2.3%            | 4.1%             | 0.0%          |
| Service Providing                    | 81.4%     | 87.8%           | 86.7%            | 89.3%         |
| Trade, Transportation, and Utilities | 18.6%     | 13.7%           | 9.9%             | 18.5%         |
| Information                          | 2.0%      | 0.9%            | 1.6%             | 0.0%          |
| Financial Activities                 | 4.6%      | 2.2%            | 1.4%             | 3.2%          |
| Professional and Business Services   | 13.4%     | 30.0%           | 51.0%            | 3.2%          |
| Education and Health Services        | 23.1%     | 18.9%           | 13.5%            | 25.7%         |
| Leisure and Hospitality              | 11.4%     | 4.6%            | 4.5%             | 4.6%          |
| Other Services                       | 4.2%      | 3.0%            | 0.9%             | 5.8%          |
| Public Administration                | 4.2%      | 14.6%           | 3.8%             | 28.3%         |

Source: U.S. Census Bureau, LEHD Origin-Destination Employment Statistics, 2018 Q2

\* Jobs covered by unemployment insurance and federal workers.

# School Districts: Gilliam County

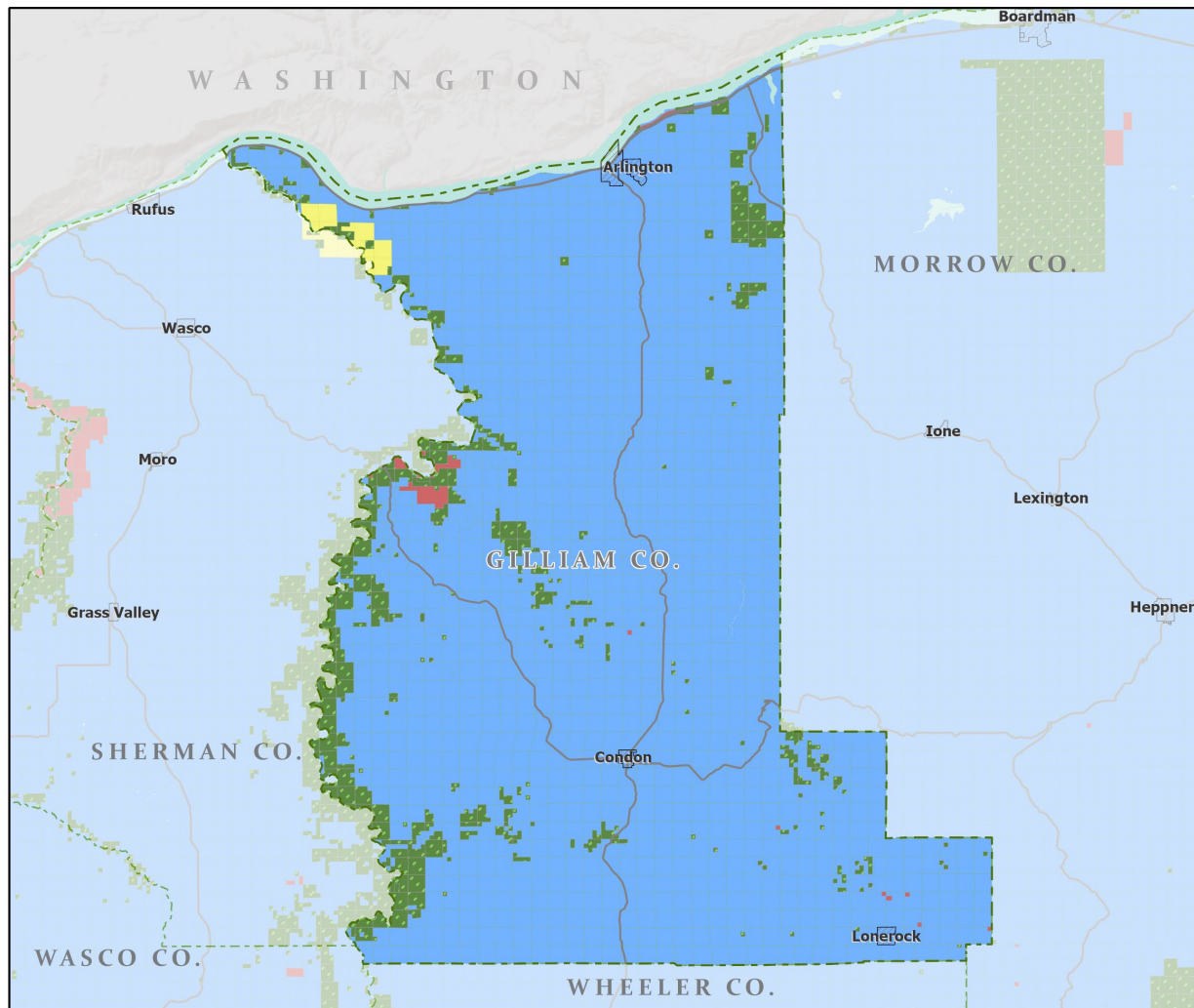


- Counties
- Incorporated Cities
- Highways



Portland State University,  
Population Research Center,  
May 2021.  
[www.pdx.edu/prc](http://www.pdx.edu/prc)

Sources: Esri, USGS, NOAA  
State of Oregon GEO;  
Oregon Dept. of  
Transportation.



Portland State University,  
Population Research Center,  
May 2021.  
[www.pdx.edu/prc](http://www.pdx.edu/prc)

Sources: Esri, USGS, NOAA

State of Oregon GEO;  
Oregon Dept. of  
Transportation; Bureau of  
Land management.



# Ecoregions: Gilliam County



- Counties
- Incorporated Cities
- Highways
- LEVEL III ECOREGIONS OF OREGON (2006)
- Blue Mountains
- Columbia Plateau



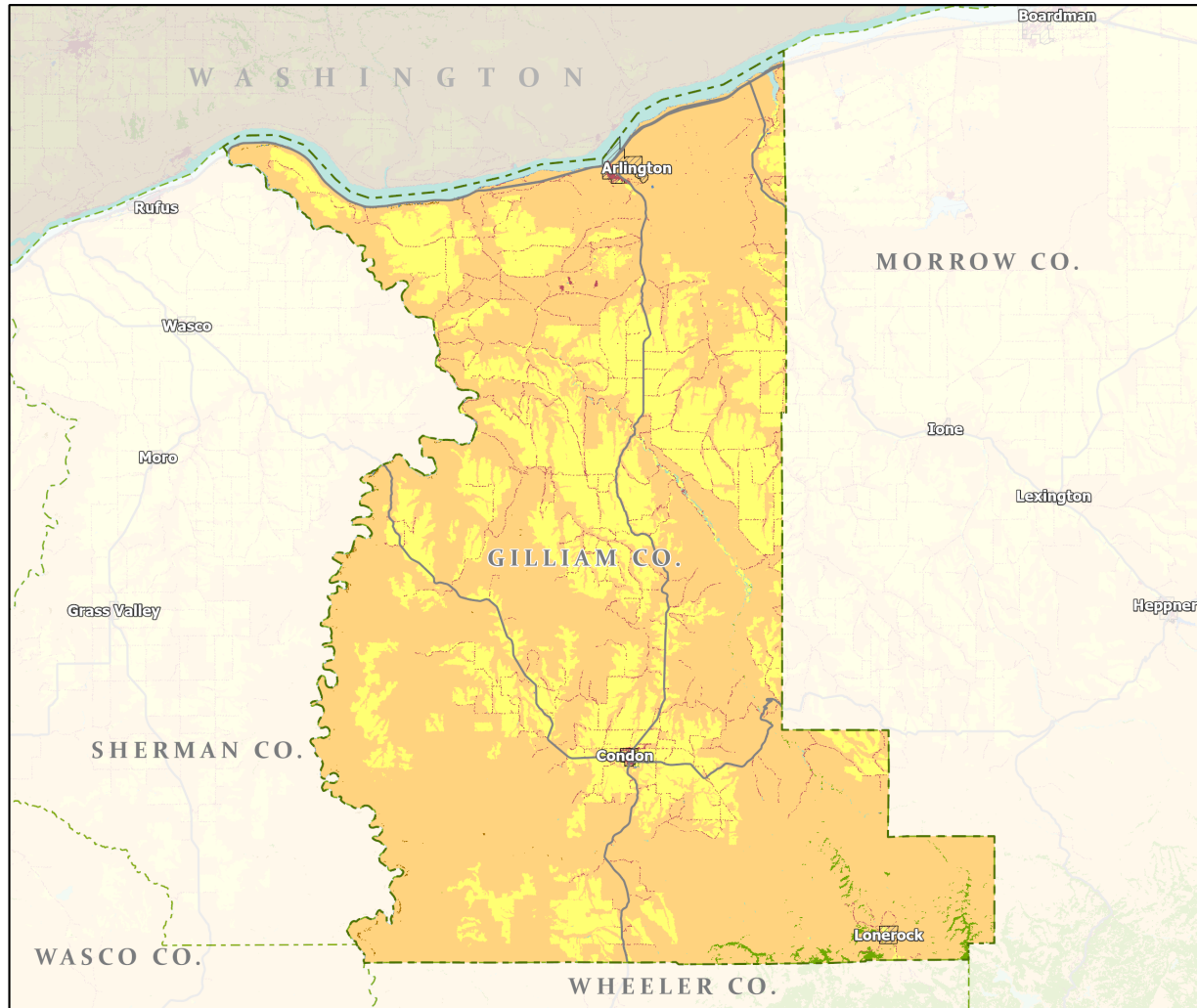
Portland State University,  
Population Research Center,  
May 2021.  
[www.pdx.edu/prc](http://www.pdx.edu/prc)

Sources: Esri, USGS, NOAA  
State of Oregon GEO;  
Oregon Dept. of  
Transportation.

0 40 Miles



# Land Cover: Gilliam County



Counties

Incorporated Cities

Highways

## NATIONAL LAND COVER

Developed

Cultivated Crops/Pasture/Hay

Barren Land

Forest

Grasslands/Scrub/Sedge

Lichens/Moss

Wetlands

Perennial Snow/Ice

Open Water



Portland State University,  
Population Research Center,  
May 2021.  
[www.pdx.edu/prc](http://www.pdx.edu/prc)

Sources: Esri, USGS, NOAA  
State of Oregon GEO;  
Oregon Dept. of  
Transportation.