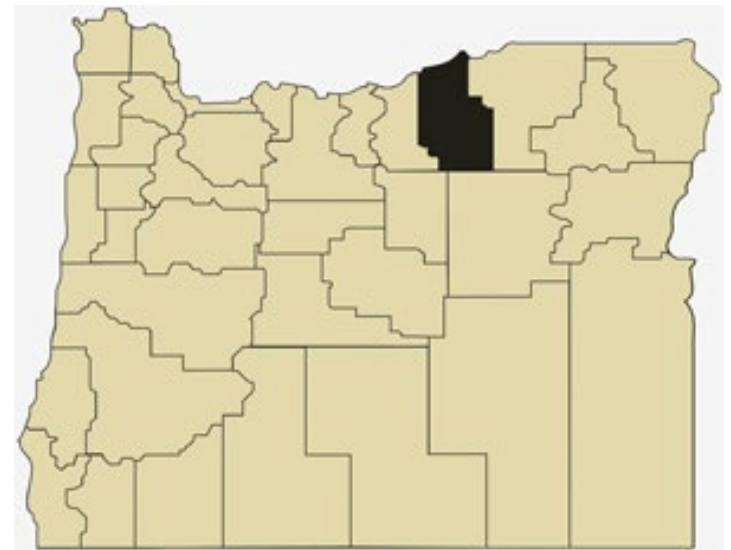


Morrow County Overview

House and Senate Committees on Redistricting

June 9, 2021

July 1, 2020 population estimate	12,825
Population rank	29th
Share of state population	0.3%
Density (per square mile)	6.3
Density rank	27th
Area (square miles)	2,049
Area rank	16th
Share of state area	2.1%



Sources: PSU Population Research Center; Oregon Blue Book.

Highways: Morrow County



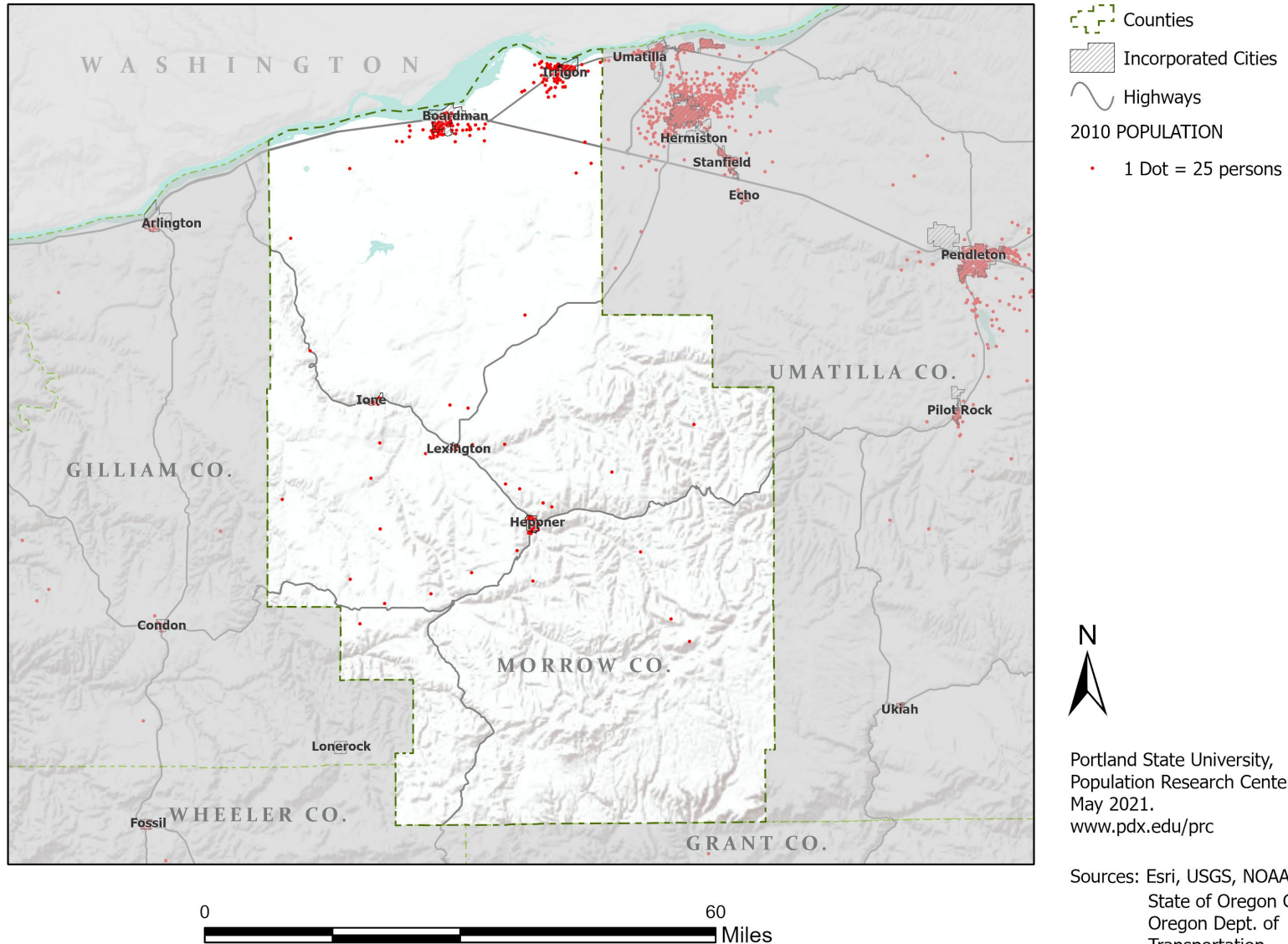
- Counties
- Incorporated Cities
- Highways



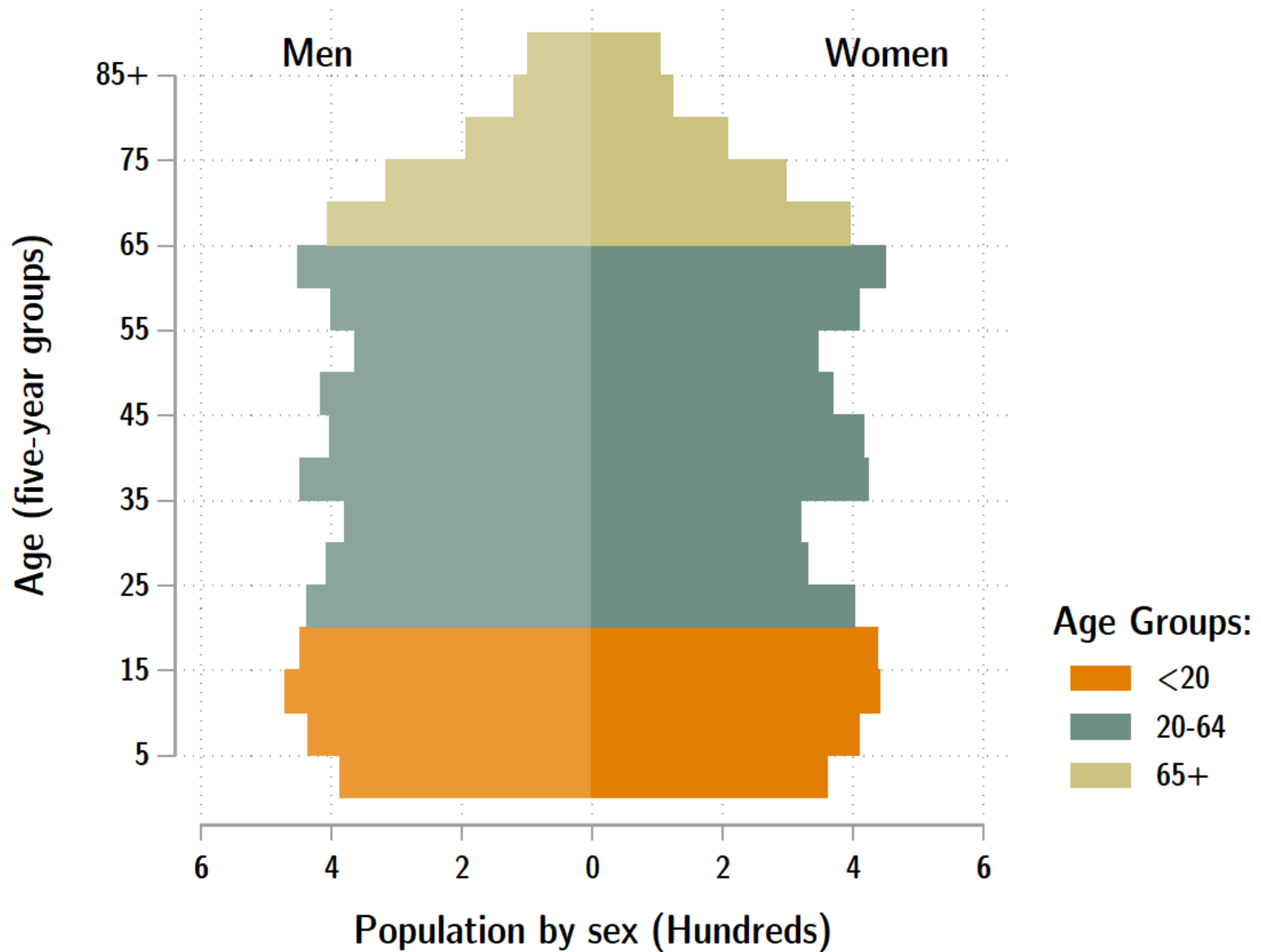
Portland State University,
Population Research Center,
May 2021.
www.pdx.edu/prc

Sources: Esri, USGS, NOAA
State of Oregon GEO;
Oregon Dept. of
Transportation.

Population: Morrow County



Morrow population by age & sex: 2020



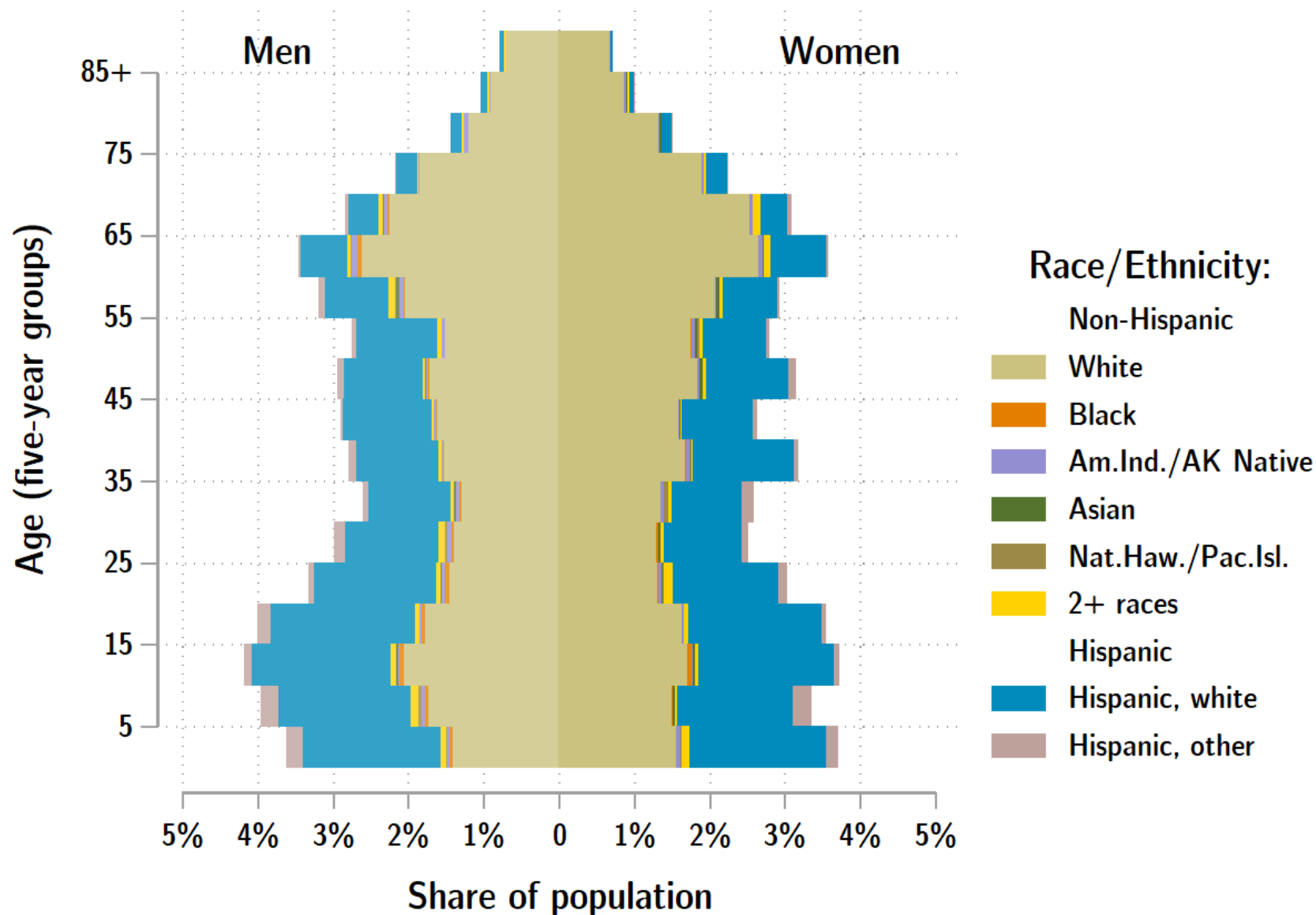
Source: Estimates by Population Research Center, PSU

Age Distribution, Morrow County

Age Group	2020 Estimate	2020 Percent of Total	Oregon 2020 Percent of Total
Total population	12,825	100.0%	100.0%
Under age 5	748	5.8%	5.4%
Age 5 to 17	2,306	18.0%	14.9%
Age 18 to 64	7,506	58.5%	61.1%
Age 65 and over	2,265	17.7%	18.6%

Source: PSU Population Research Center July 1, 2020 Population Estimates

Morrow County population by age & sex: 2019



Source: Estimates by US Census Bureau

Race and Ethnicity, Morrow County

	2010 Census	2010 Census Percent	2015-19 ACS Estimate	2015-19 ACS Percent	Oregon 2015-19 ACS Percent
HISPANIC OR LATINO AND RACE					
Total population	11,173	100.0%	11,303	100.0%	100.0%
Hispanic or Latino	3,497	31.3%	4,126	36.5%*	13.0%
Not Hispanic or Latino	7,676	68.7%	7,177	63.5%*	87.0%
White alone	7,218	64.6%	6,698	59.3%*	75.7%
Black or African American alone	36	0.3%	26	0.2%	1.8%
American Indian and Alaska Native alone	112	1.0%	57	0.5%*	0.9%
Asian alone	100	0.9%	70	0.6%*	4.3%
Native Hawaiian and Other Pacific Islander alone	13	0.1%	58	0.5%	0.4%
Some Other Race alone	16	0.1%	0	0.0%	0.1%
Two or More Races	181	1.6%	268	2.4%*	3.7%

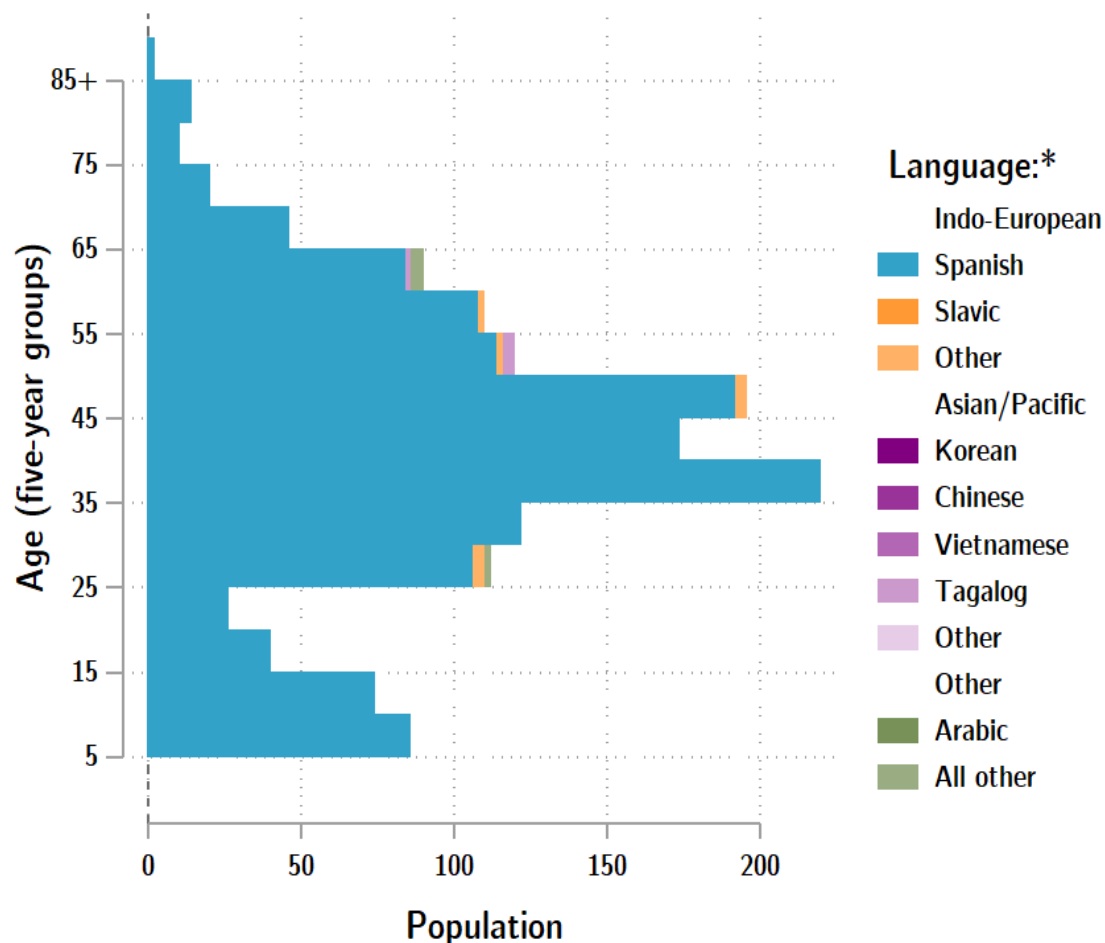
	2010 Census	2010 Census Percent	2015-19 ACS Estimate	2015-19 ACS Percent	Oregon 2015-19 ACS Percent
RACE ALONE OR IN COMBINATION WITH ONE OR MORE OTHER RACES**					
White	8,934	80.0%	10,468	92.6%*	88.8%
Black or African American	93	0.8%	91	0.8%	2.9%
American Indian and Alaska Native	288	2.6%	407	3.6%	3.1%
Asian	147	1.3%	98	0.9%*	6.0%
Native Hawaiian and Other Pacific Islander	26	0.2%	70	0.6%	0.8%
Some Other Race	1,996	17.9%	528	4.7%*	3.6%

Source: U.S. Census Bureau, 2010 Census and 2019 5-year American Community Survey estimates.

* Difference between 2010 Census and 2015-19 ACS is statistically significant at the 90% confidence level.

** Total may add to more than 100% due to persons identifying as more than one race.

Morrow County population by age & language: 2019



Language Spoken at Home Speak English less than "very well" Morrow County

Languages	Estimate
Total Population Age 5 and Older	10,457
Speaking English less than "very well"	1,465
Spanish	1,435
Russian, Polish, or other Slavic languages	0
Other Indo-European languages	13
Korean	0
Chinese (incl. Cantonese and Mandarin)	0
Vietnamese	0
Tagalog (incl. Filipino)	5
Other Asian and Pacific Island languages	0
Arabic	0
Other languages	12

Source: U.S. Census Bureau American Community Survey 2019 5-year estimates, Table C16001.

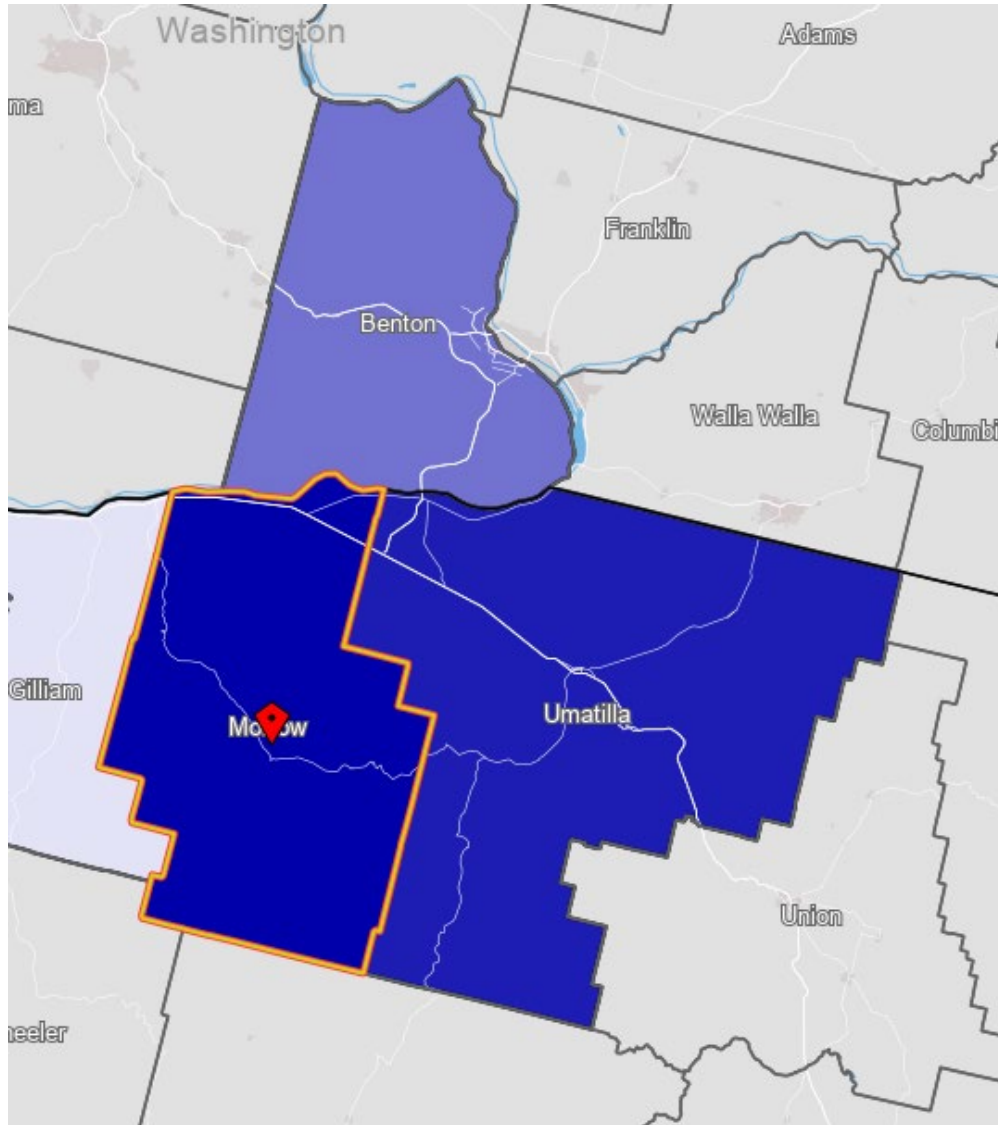
Note: * Languages for persons who speak English less than very well.

Source: ACS tables B16004, C16001, PUMS; PEP estimates; Analysis by PRC, PSU

[Link to Table C16001](#) for all counties, including margins of error.

[Visualization](#) of language data by census tract within county.

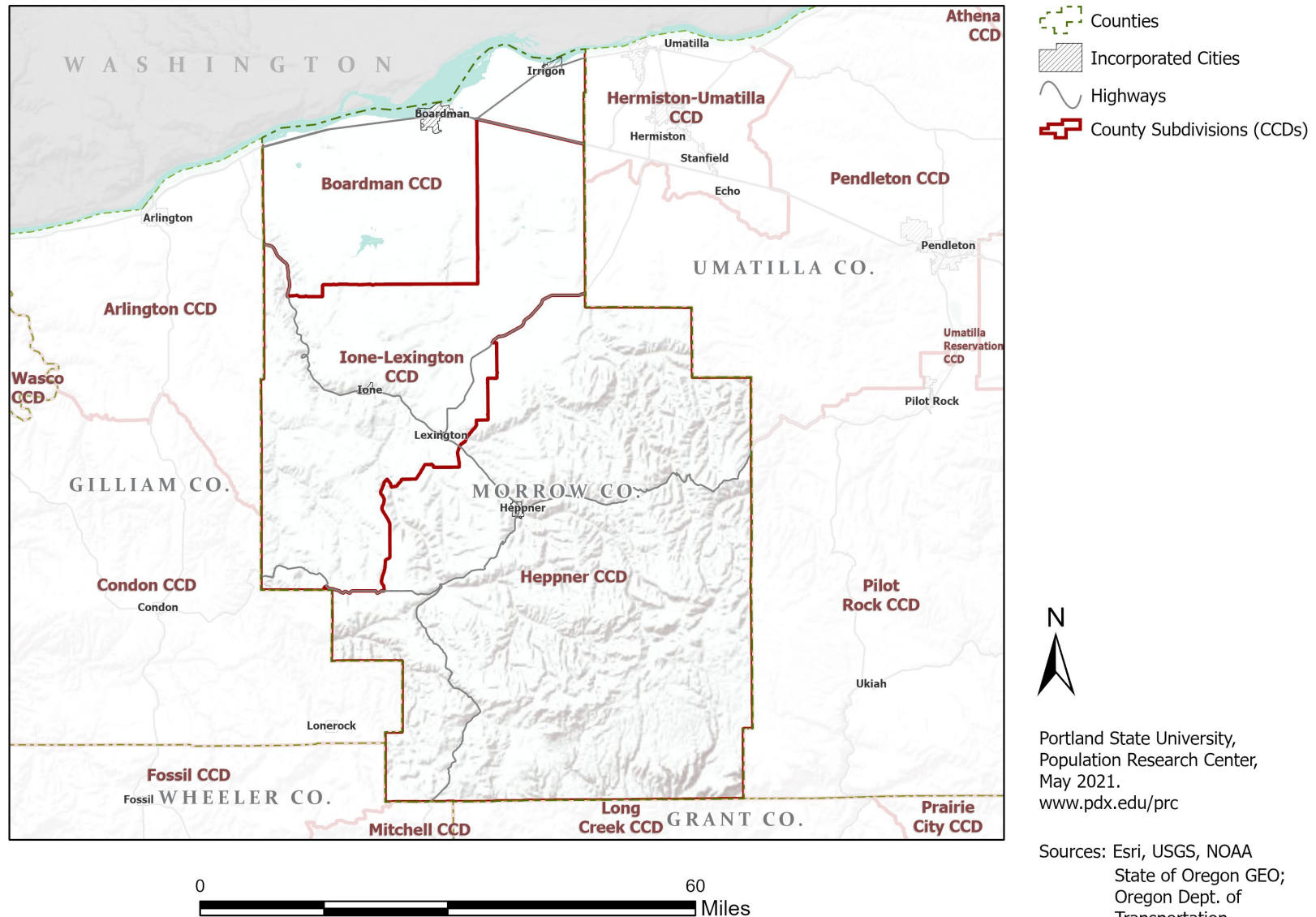
Morrow County Commute Flows



Jobs Counts by Counties Where Workers are Employed - All Jobs

	2018	
	Count	Share
All Counties	4,720	100.0%
Morrow County, OR	2,167	45.9%
Umatilla County, OR	1,105	23.4%
Multnomah County, OR	229	4.9%
Washington County, OR	141	3.0%
Benton County, WA	126	2.7%
Marion County, OR	122	2.6%
Deschutes County, OR	61	1.3%
Clackamas County, OR	55	1.2%
Gilliam County, OR	52	1.1%
Lane County, OR	52	1.1%
All Other Locations	610	12.9%

County Subdivisions (CCDs): Morrow County



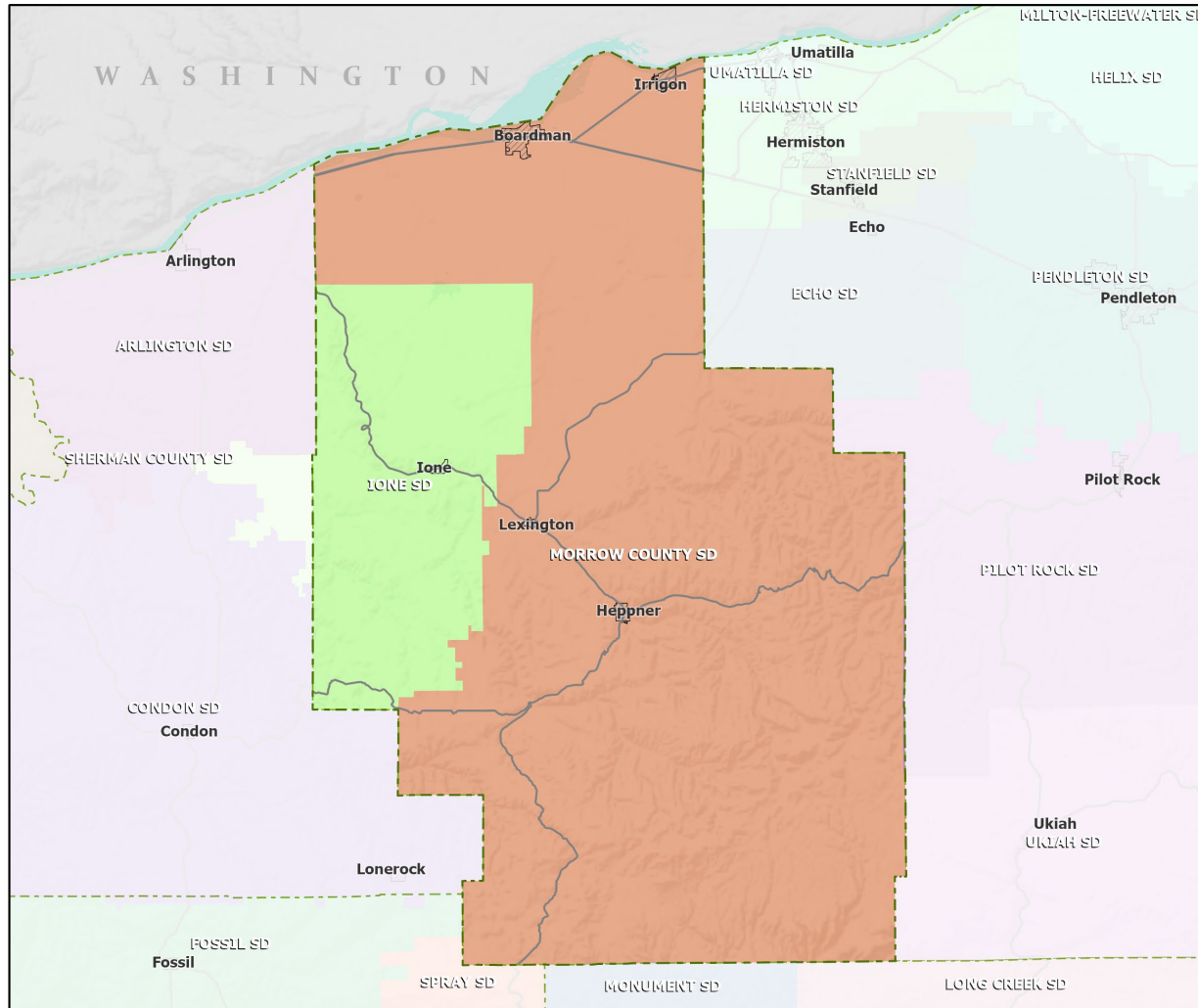
Morrow County Employment by Sector by Census County Division

Sector	Oregon	County Total	Boardman CCD	Heppner CCD	Ione- Lexington CCD
Total, All Jobs*	1,904,601	5,434	4,243	849	342
Goods-Producing	18.6%	53.1%	60.6%	13.5%	58.5%
Natural Resources and Mining	2.7%	26.4%	28.0%	6.6%	55.3%
Construction	5.9%	2.1%	1.3%	5.2%	3.2%
Manufacturing	10.0%	24.7%	31.3%	1.8%	0.0%
Service Providing	81.4%	46.9%	39.4%	86.5%	41.5%
Trade, Transportation, and Utilities	18.6%	13.3%	11.9%	16.1%	23.7%
Information	2.0%	6.2%	7.8%	0.5%	0.6%
Financial Activities	4.6%	1.1%	0.8%	2.8%	0.9%
Professional and Business Services	13.4%	2.6%	1.8%	6.9%	0.6%
Education and Health Services	23.1%	15.0%	11.2%	33.7%	14.6%
Leisure and Hospitality	11.4%	4.0%	3.9%	5.8%	0.0%
Other Services	4.2%	1.6%	0.7%	6.9%	0.3%
Public Administration	4.2%	3.1%	1.2%	13.7%	0.9%

Source: U.S. Census Bureau, LEHD Origin-Destination Employment Statistics, 2018 Q2

* Jobs covered by unemployment insurance and federal workers.

School Districts: Morrow County



- Counties
- Incorporated Cities
- Highways

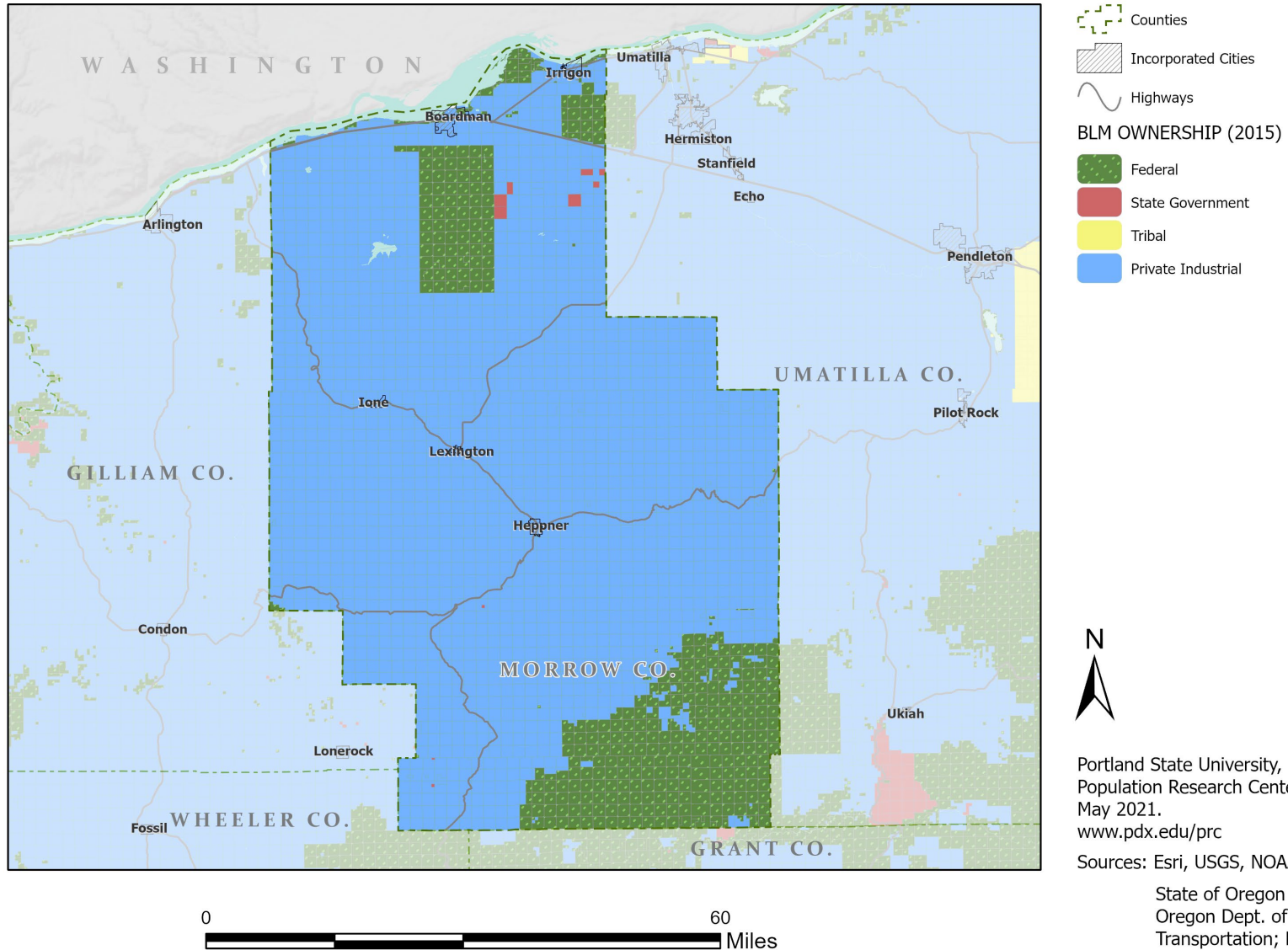


Portland State University,
Population Research Center,
May 2021.
www.pdx.edu/prc

Sources: Esri, USGS, NOAA
State of Oregon GEO;
Oregon Dept. of
Transportation.

0 60 Miles

Land Ownership: Morrow County



Portland State University,
Population Research Center,
May 2021.
www.pdx.edu/prc

Sources: Esri, USGS, NOAA

State of Oregon GEO;
Oregon Dept. of
Transportation; Bureau of
Land management.

Ecoregions: Morrow County



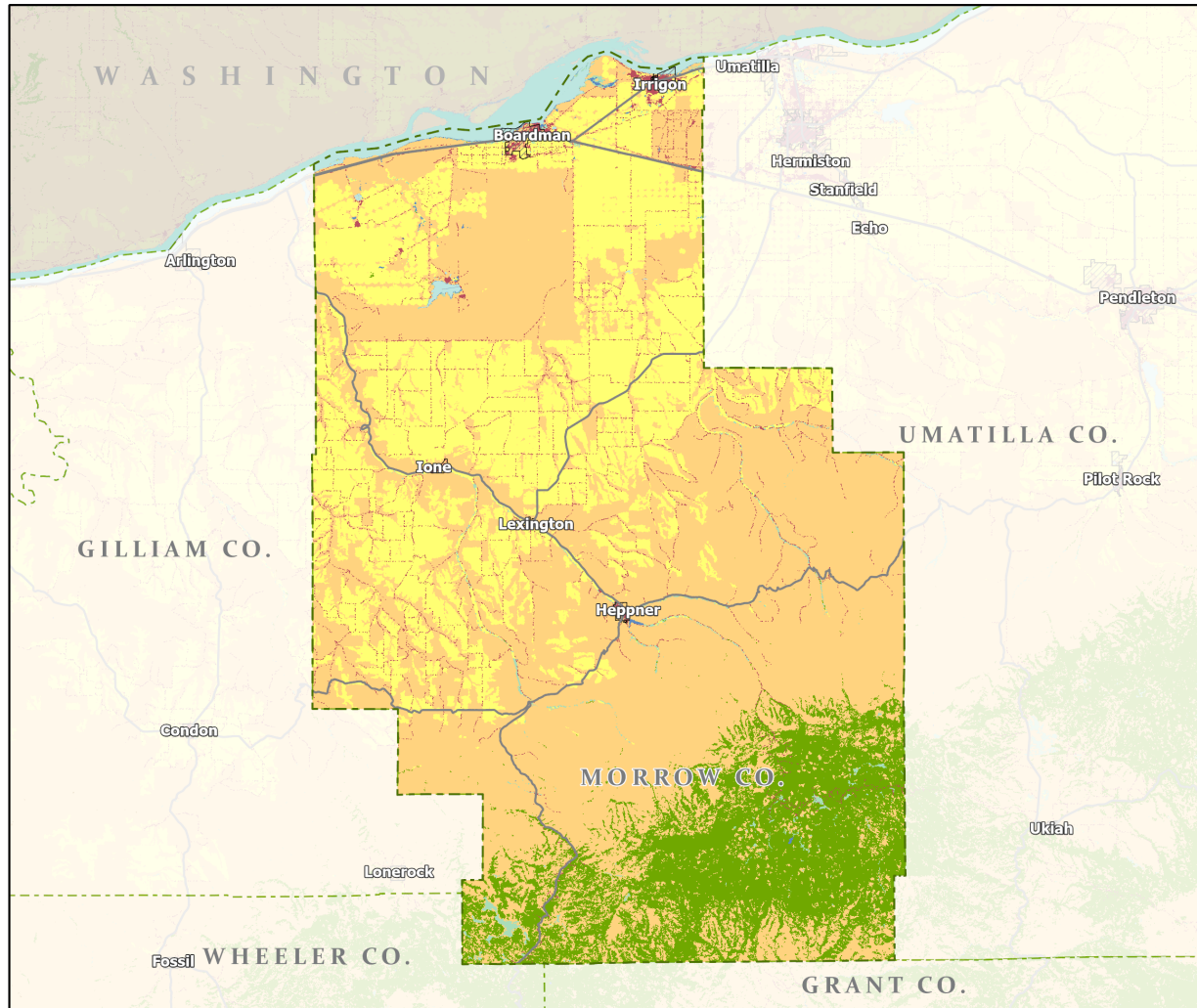
- Counties
- Incorporated Cities
- Highways
- LEVEL III ECOREGIONS OF OREGON (2006)
 - Blue Mountains
 - Columbia Plateau



Portland State University,
Population Research Center,
May 2021.
www.pdx.edu/prc

Sources: Esri, USGS, NOAA
State of Oregon GEO;
Oregon Dept. of
Transportation.

Land Cover: Morrow County



Counties

Incorporated Cities

Highways

NATIONAL LAND COVER

Developed

Cultivated Crops/Pasture/Hay

Barren Land

Forest

Grasslands/Scrub/Sedge

Lichens/Moss

Wetlands

Perennial Snow/Ice

Open Water



Portland State University,
Population Research Center,
May 2021.
www.pdx.edu/prc

Sources: Esri, USGS, NOAA
State of Oregon GEO;
Oregon Dept. of
Transportation.

0 60 Miles