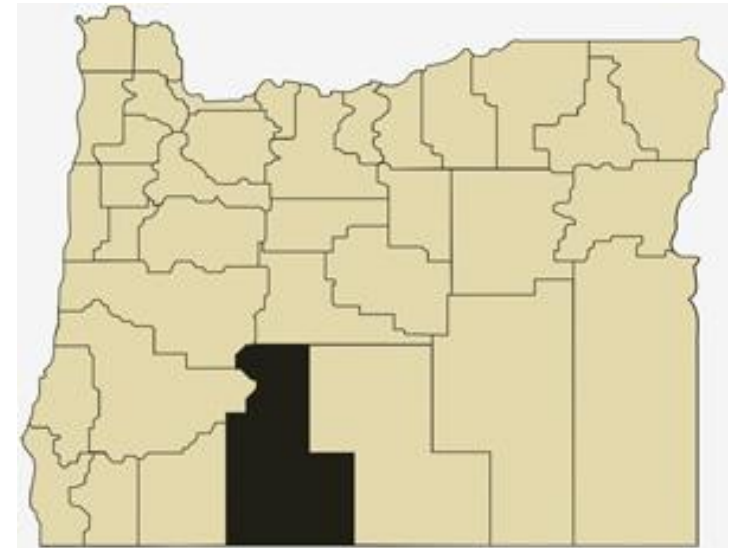


Klamath County Overview

House and Senate Committees on Redistricting

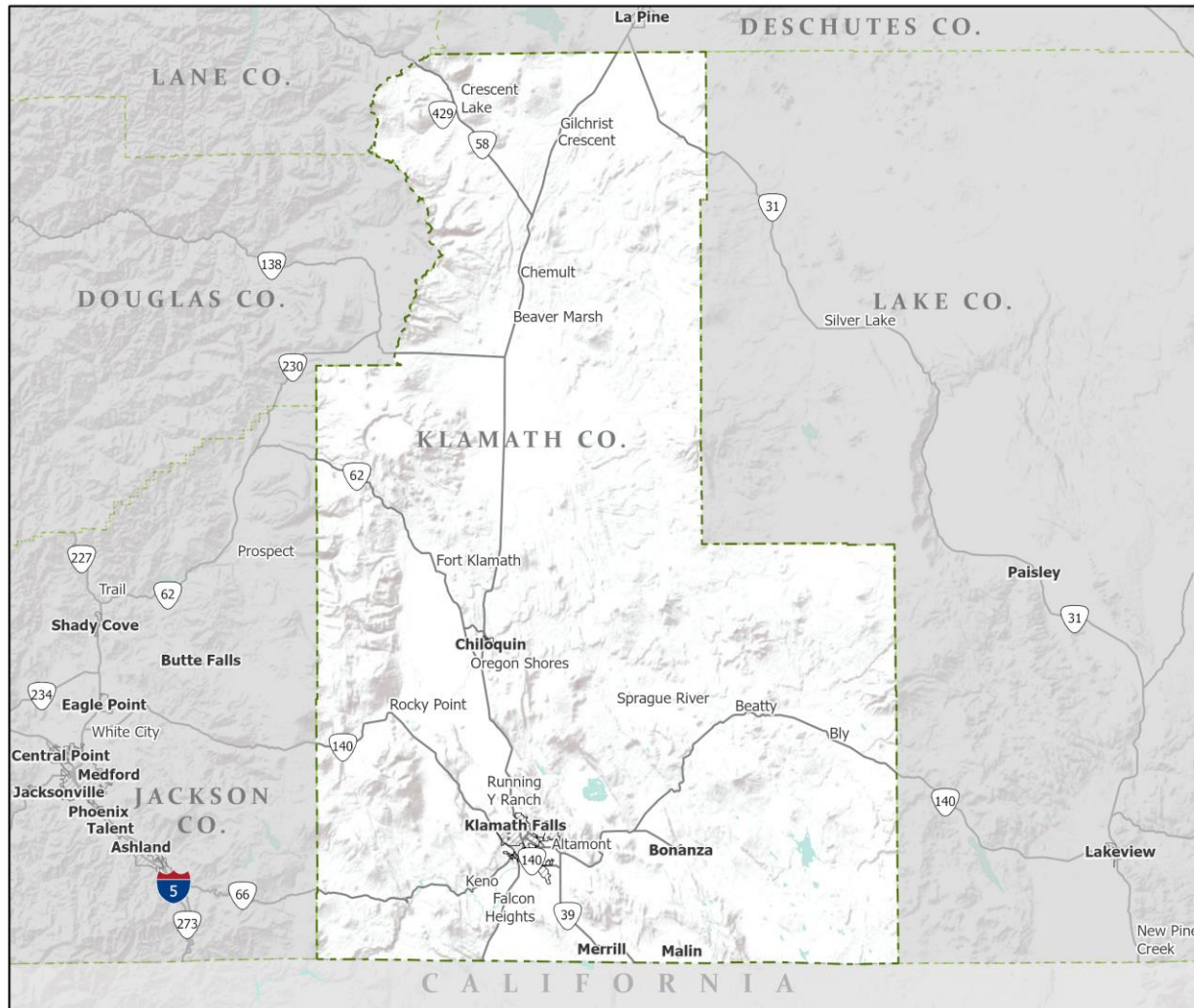
June 8, 2021

July 1, 2020 population estimate	68,075
Population rank	15th
Share of state population	1.6%
Density (per square mile)	11.1
Density rank	25th
Area (square miles)	6,135
Area rank	4th
Share of state area	6.3%



Sources: PSU Population Research Center; Oregon Blue Book.

Highways: Klamath County



- Counties
- Incorporated Cities
- Highways

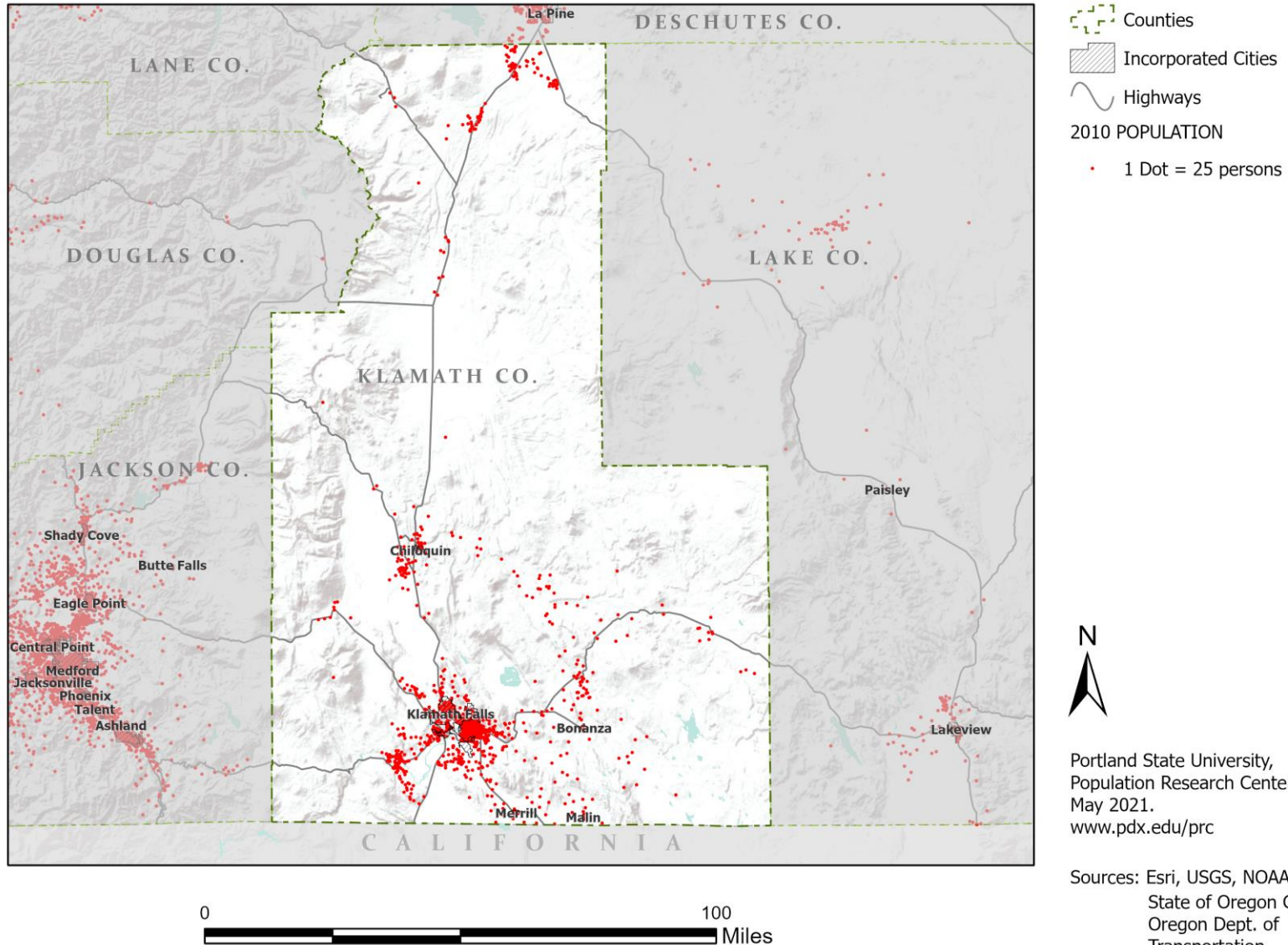


Portland State University,
Population Research Center,
May 2021.
www.pdx.edu/prc

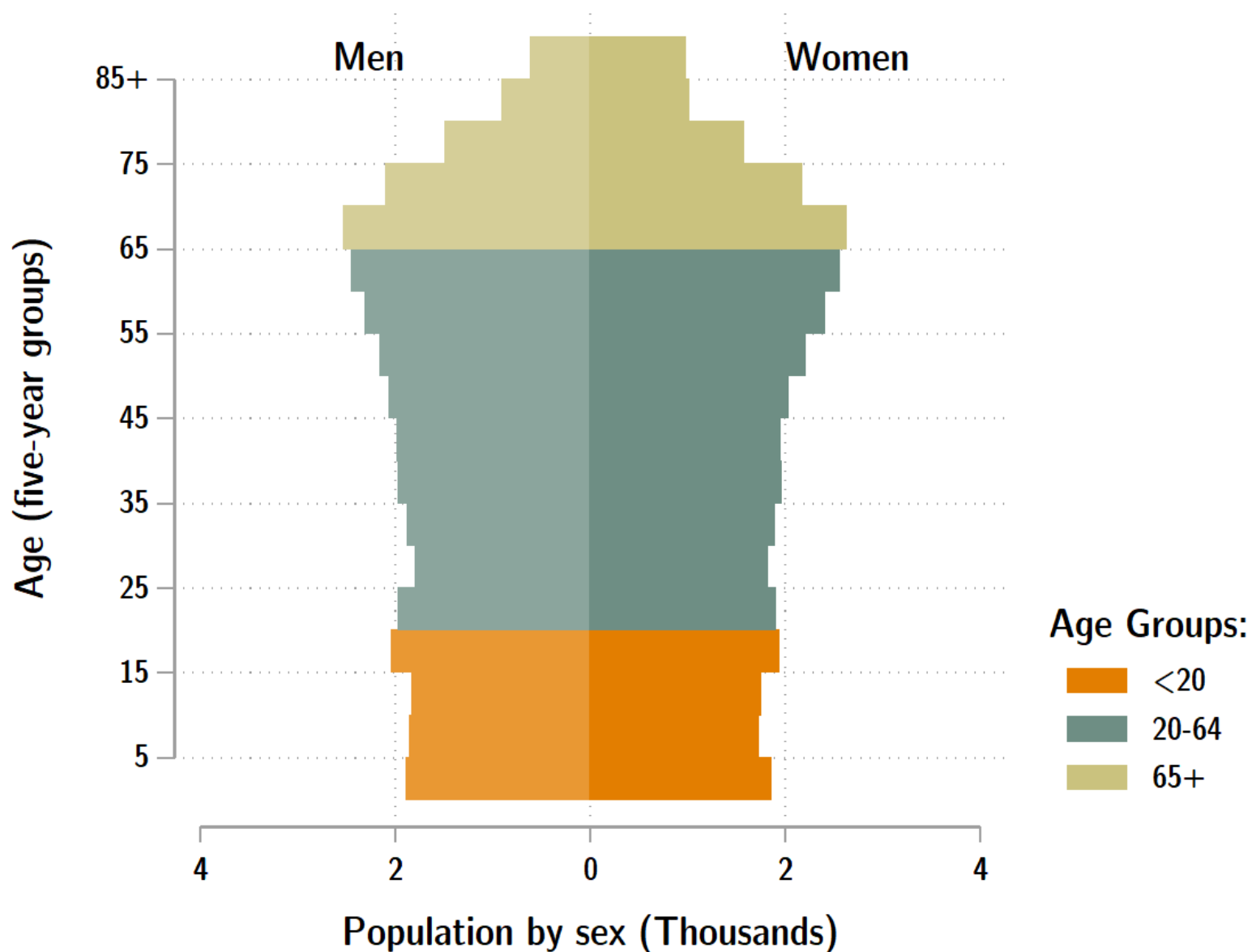
Sources: Esri, USGS, NOAA
State of Oregon GEO;
Oregon Dept. of
Transportation.

0 100 Miles

Population: Klamath County



Klamath population by age & sex: 2020



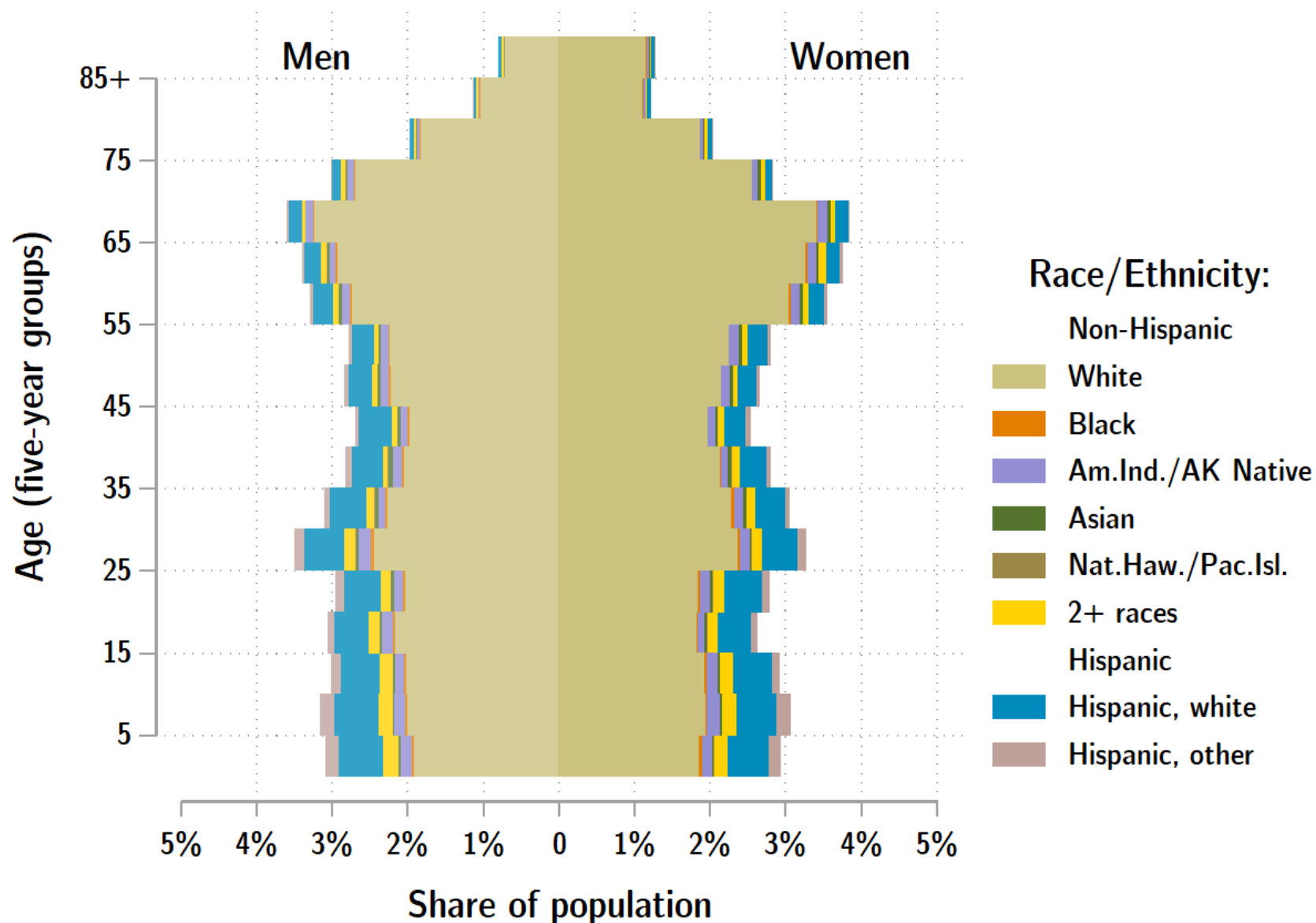
Source: Estimates by Population Research Center, PSU

Age Distribution, Klamath County

Age Group	2020 Estimate	2020 Percent of Total	Oregon 2020 Percent of Total
Total population	68,075	100.0%	100.0%
Under age 5	3,732	5.5%	5.4%
Age 5 to 17	9,372	13.8%	14.9%
Age 18 to 64	38,998	57.3%	61.1%
Age 65 and over	15,974	23.5%	18.6%

Source: PSU Population Research Center July 1, 2020 Population Estimates

Klamath County population by age & sex: 2019



Source: Estimates by US Census Bureau

Race and Ethnicity, Klamath County

	2010 Census	2010 Census Percent	2015-19 ACS Estimate	2015-19 ACS Percent	Oregon 2015-19 ACS Percent
HISPANIC OR LATINO AND RACE					
Total population	66,380	100.0%	66,921	100.0%	100.0%
Hispanic or Latino	6,915	10.4%	8,740	13.1%*	13.0%
Not Hispanic or Latino	59,465	89.6%	58,181	86.9%*	87.0%
White alone	53,822	81.1%	52,101	77.9%*	75.7%
Black or African American alone	394	0.6%	446	0.7%	1.8%
American Indian and Alaska Native alone	2,407	3.6%	2,626	3.9%	0.9%
Asian alone	615	0.9%	682	1.0%	4.3%
Native Hawaiian and Other Pacific Islander alone	68	0.1%	38	0.1%	0.4%
Some Other Race alone	63	0.1%	25	0.0%	0.1%
Two or More Races	2,096	3.2%	2,263	3.4%	3.7%

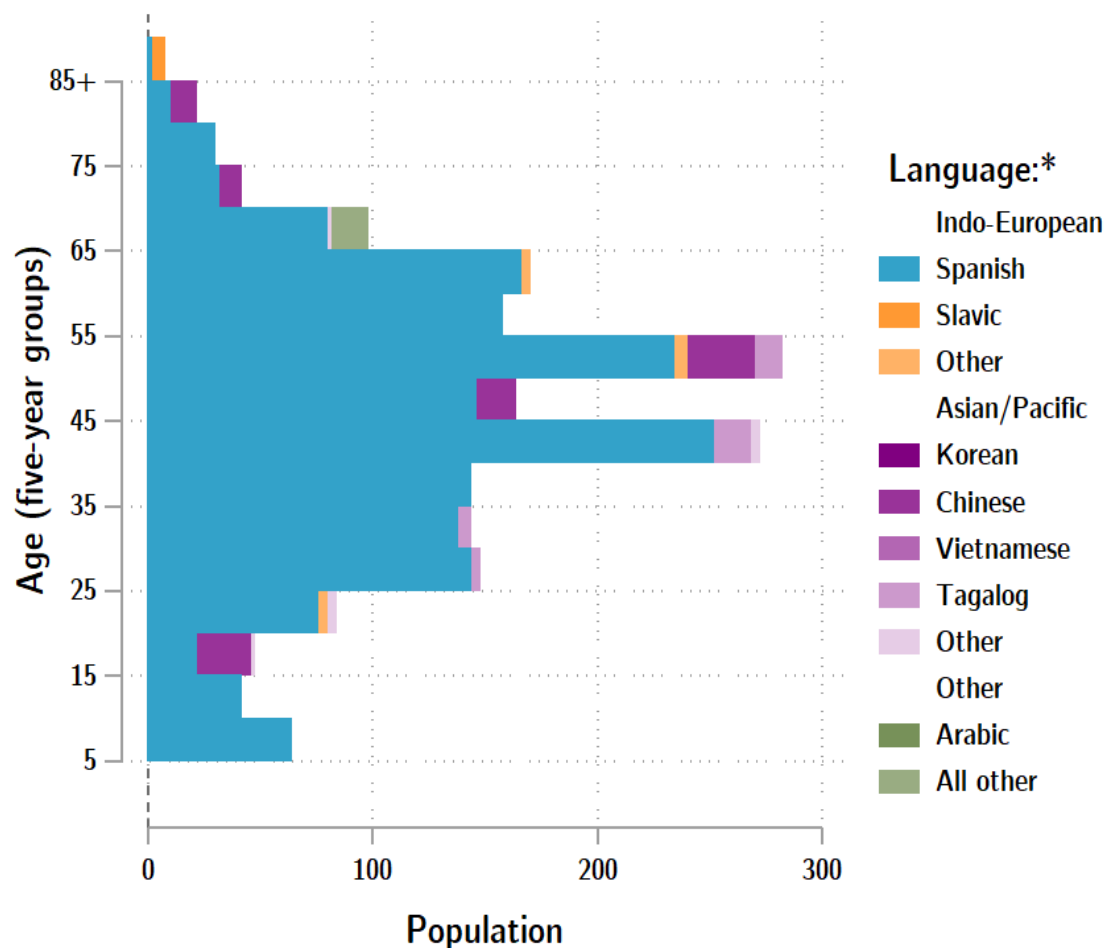
	2010 Census	2010 Census Percent	2015-19 ACS Estimate	2015-19 ACS Percent	Oregon 2015-19 ACS Percent
RACE ALONE OR IN COMBINATION WITH ONE OR MORE OTHER RACES**					
White	59,595	89.8%	61,091	91.3%*	88.8%
Black or African American	817	1.2%	1,130	1.7%*	2.9%
American Indian and Alaska Native	4,430	6.7%	4,497	6.7%	3.1%
Asian	1,007	1.5%	1,231	1.8%*	6.0%
Native Hawaiian and Other Pacific Islander	223	0.3%	370	0.6%*	0.8%
Some Other Race	3,202	4.8%	1,889	2.8%*	3.6%

Source: U.S. Census Bureau, 2010 Census and 2019 5-year American Community Survey estimates.

* Difference between 2010 Census and 2015-19 ACS is statistically significant at the 90% confidence level.

** Total may add to more than 100% due to persons identifying as more than one race.

Klamath County population by age & language: 2019



Language Spoken at Home Speak English less than "very well" Klamath County

Languages	Estimate
Total Population Age 5 and Older	62,820
Speaking English less than "very well"	2,003
Spanish	1,743
Russian, Polish, or other Slavic languages	10
Other Indo-European languages	69
Korean	0
Chinese (incl. Cantonese and Mandarin)	94
Vietnamese	0
Tagalog (incl. Filipino)	48
Other Asian and Pacific Island languages	13
Arabic	0
Other languages	26

Source: U.S. Census Bureau American Community Survey 2019 5-year estimates, Table C16001.

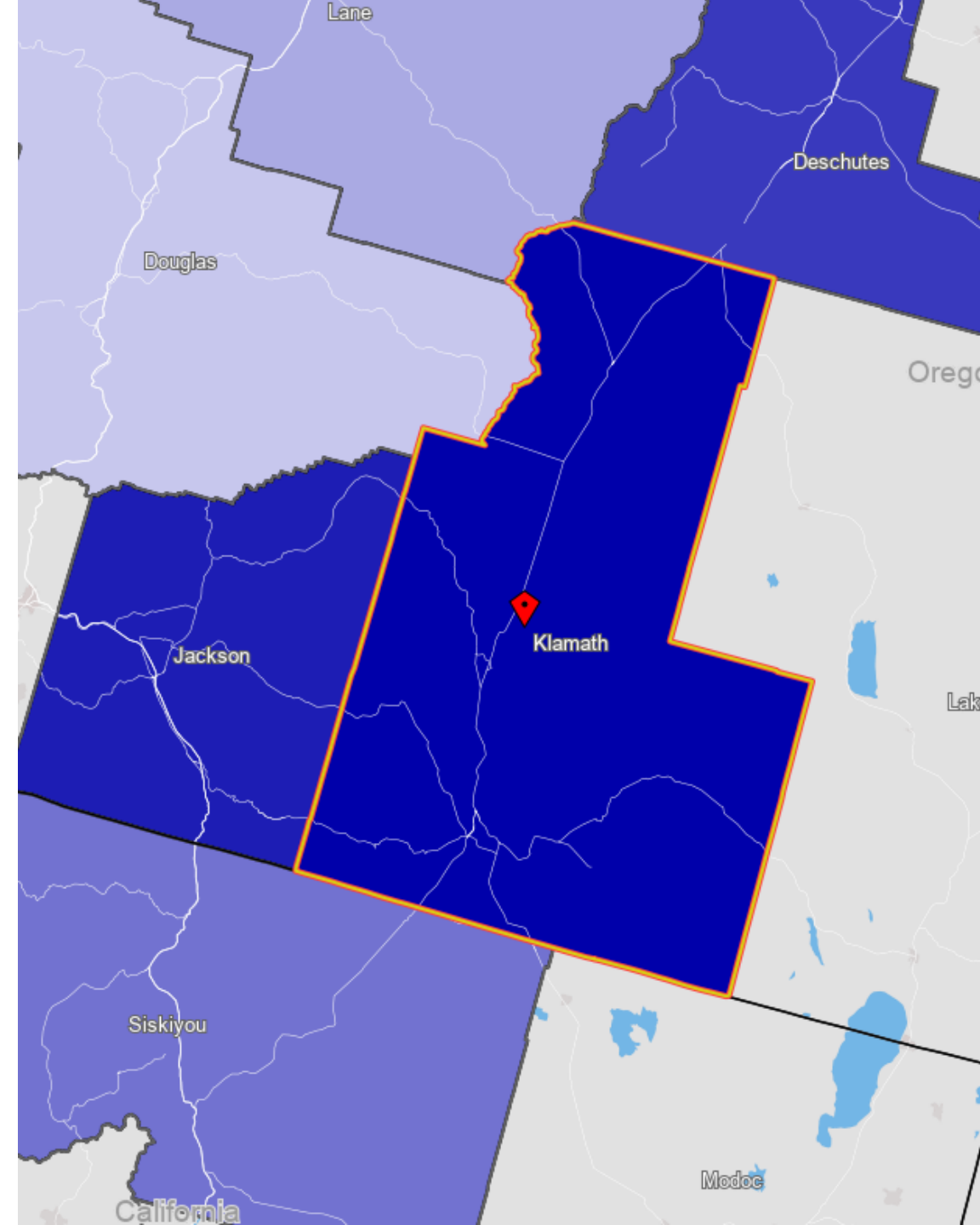
Note: * Languages for persons who speak English less than very well.

Source: ACS tables B16004, C16001, PUMS; PEP estimates; Analysis by PRC, PSU

[Link to Table C16001](#) for all counties, including margins of error.

[Visualization](#) of language data by census tract within county.

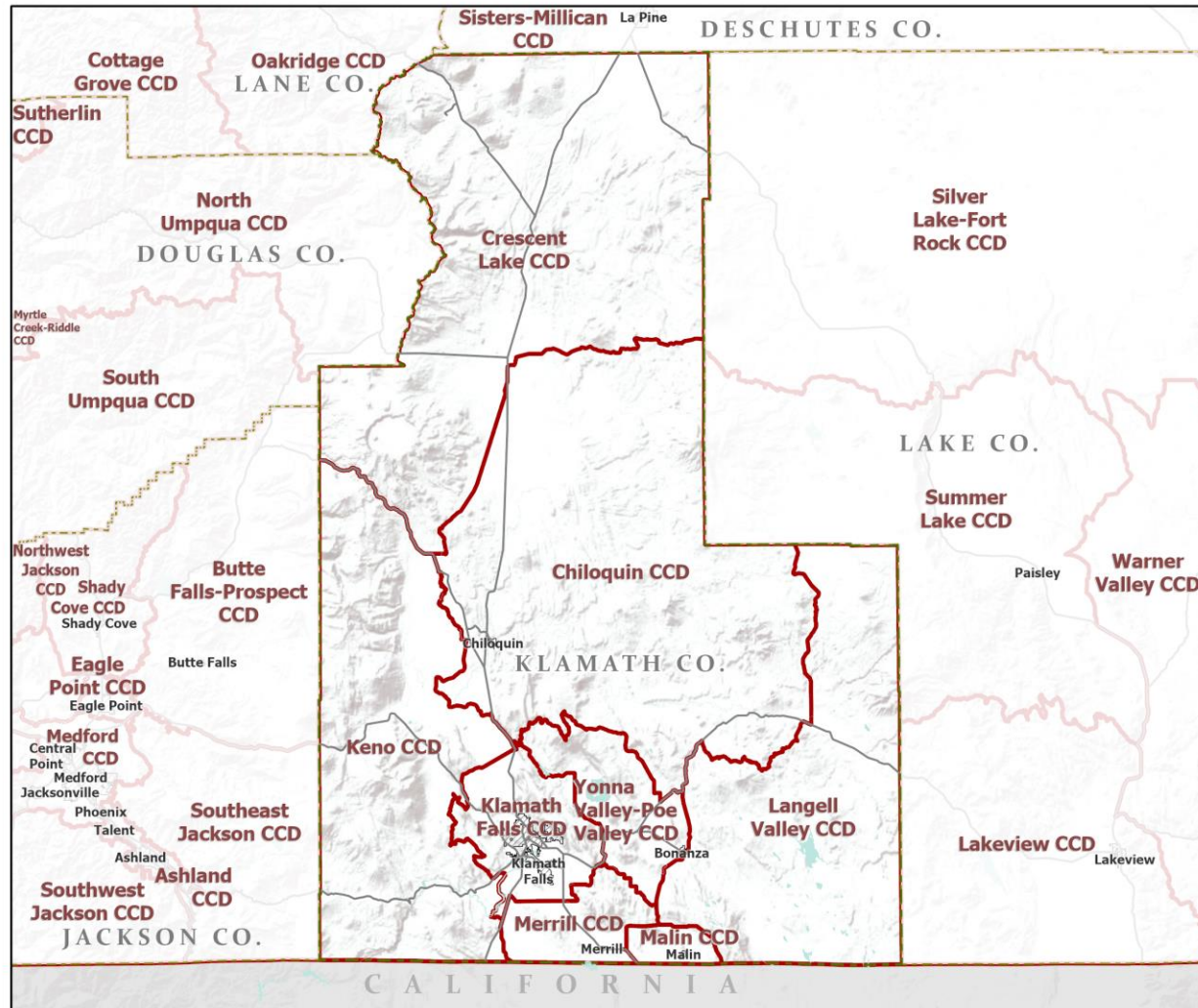
Klamath County Commute Flows



Jobs Counts by Counties Where Workers are Employed - All Jobs

2018		
	Count	Share
All Counties	24,710	100.0%
Klamath County, OR	17,525	70.9%
Jackson County, OR	1,372	5.6%
Deschutes County, OR	1,361	5.5%
Multnomah County, OR	363	1.5%
Siskiyou County, CA	342	1.4%
Ada County, ID	341	1.4%
Lane County, OR	336	1.4%
Marion County, OR	336	1.4%
Douglas County, OR	181	0.7%
Washington County, OR	178	0.7%
All Other Locations	2,375	9.6%

County Subdivisions (CCDs): Klamath County



- Counties
- Incorporated Cities
- Highways
- County Subdivisions (CCDs)



Portland State University,
Population Research Center,
May 2021.
www.pdx.edu/prc

Sources: Esri, USGS, NOAA
State of Oregon GEO;
Oregon Dept. of
Transportation.

0 100 Miles

Klamath County Employment by Sector by Census County Division (1 of 2)

Sector	Oregon	County Total	Chiloquin CCD	Crescent Lake CCD	Keno CCD	Klamath Falls CCD
Total, All Jobs*	1,904,601	22,532	681	547	267	19,692
Goods-Producing	18.6%	17.2%	25.8%	45.0%	26.6%	14.1%
Natural Resources and Mining	2.7%	3.7%	4.3%	5.5%	4.9%	1.1%
Construction	5.9%	5.0%	3.2%	5.5%	2.2%	5.2%
Manufacturing	10.0%	8.5%	18.4%	34.0%	19.5%	7.9%
Service Providing	81.4%	82.8%	74.2%	55.0%	73.4%	85.9%
Trade, Transportation, and Utilities	18.6%	18.8%	11.2%	13.3%	37.5%	18.3%
Information	2.0%	0.8%	0.7%	0.2%	0.0%	0.8%
Financial Activities	4.6%	2.9%	0.7%	0.0%	1.5%	3.3%
Professional and Business Services	13.4%	9.8%	5.7%	5.5%	2.6%	10.7%
Education and Health Services	23.1%	29.0%	5.4%	3.1%	5.6%	32.0%
Leisure and Hospitality	11.4%	11.9%	19.4%	27.8%	19.5%	11.6%
Other Services	4.2%	4.7%	4.0%	2.9%	4.1%	4.8%
Public Administration	4.2%	4.8%	27.0%	2.2%	2.6%	4.4%

Continued on next slide

Source: U.S. Census Bureau, LEHD Origin-Destination Employment Statistics, 2018 Q2

* Jobs covered by unemployment insurance and federal workers.

Klamath County Employment by Sector by Census County Division (2 of 2)

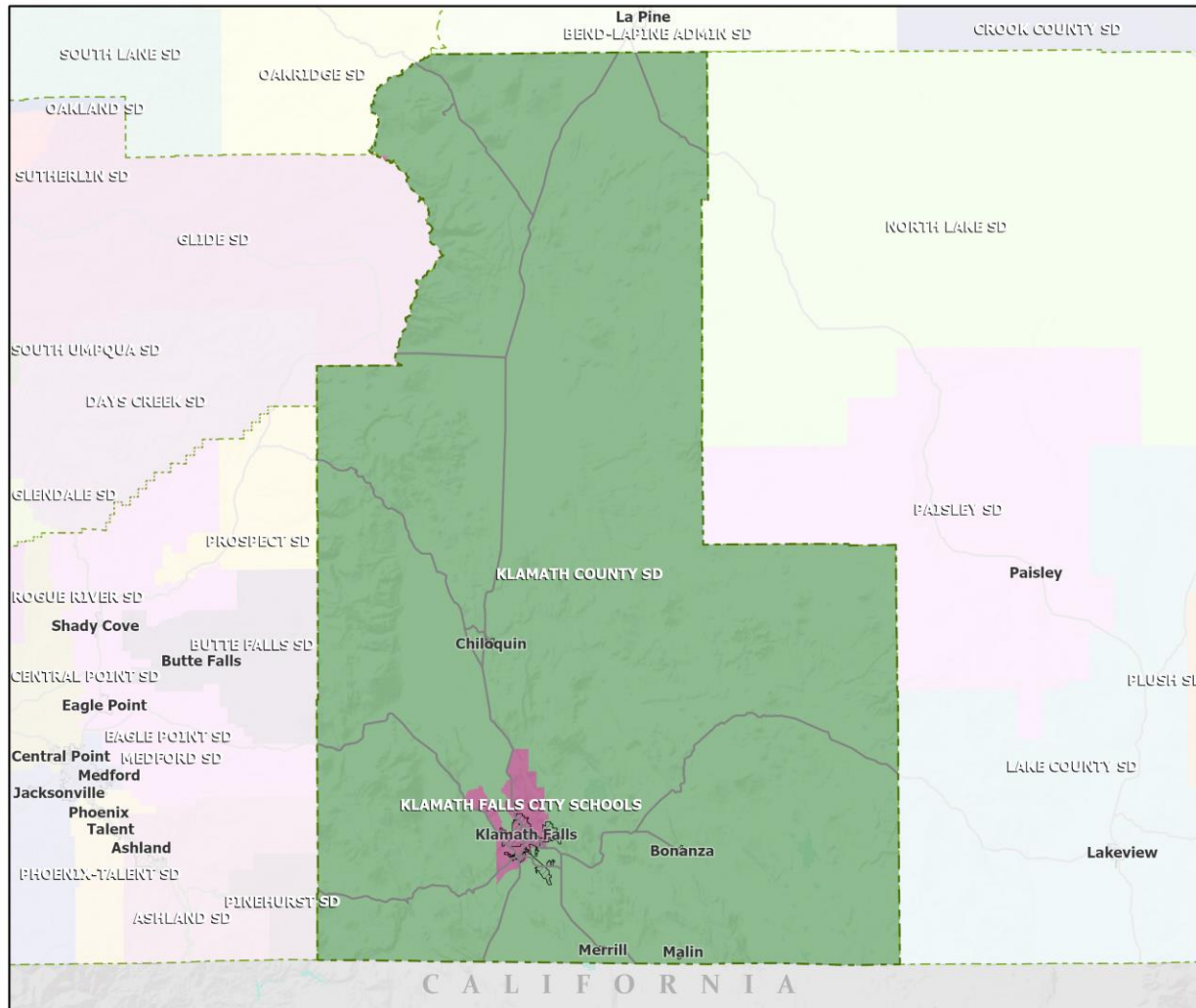
Continued from previous slide

Sector	Oregon	County Total	Langell Valley CCD	Malin CCD	Merrill CCD	Yonna Valley-Poe Valley CCD
Total, All Jobs*	1,904,601	22,532	136	556	432	221
Goods-Producing	18.6%	17.2%	47.8%	44.6%	34.5%	64.3%
Natural Resources and Mining	2.7%	3.7%	45.6%	41.0%	31.3%	56.1%
Construction	5.9%	5.0%	2.2%	1.6%	2.8%	7.7%
Manufacturing	10.0%	8.5%	0.0%	2.0%	0.5%	0.5%
Service Providing	81.4%	82.8%	52.2%	55.4%	65.5%	35.7%
Trade, Transportation, and Utilities	18.6%	18.8%	35.3%	26.3%	40.7%	5.4%
Information	2.0%	0.8%	0.0%	0.5%	0.5%	1.4%
Financial Activities	4.6%	2.9%	2.9%	0.0%	1.2%	0.0%
Professional and Business Services	13.4%	9.8%	0.7%	1.4%	3.9%	1.4%
Education and Health Services	23.1%	29.0%	1.5%	19.8%	6.5%	13.6%
Leisure and Hospitality	11.4%	11.9%	5.1%	2.5%	5.8%	6.3%
Other Services	4.2%	4.7%	6.6%	2.5%	5.1%	4.5%
Public Administration	4.2%	4.8%	0.0%	2.3%	1.9%	3.2%

Source: U.S. Census Bureau, LEHD Origin-Destination Employment Statistics, 2018 Q2

* Jobs covered by unemployment insurance and federal workers.

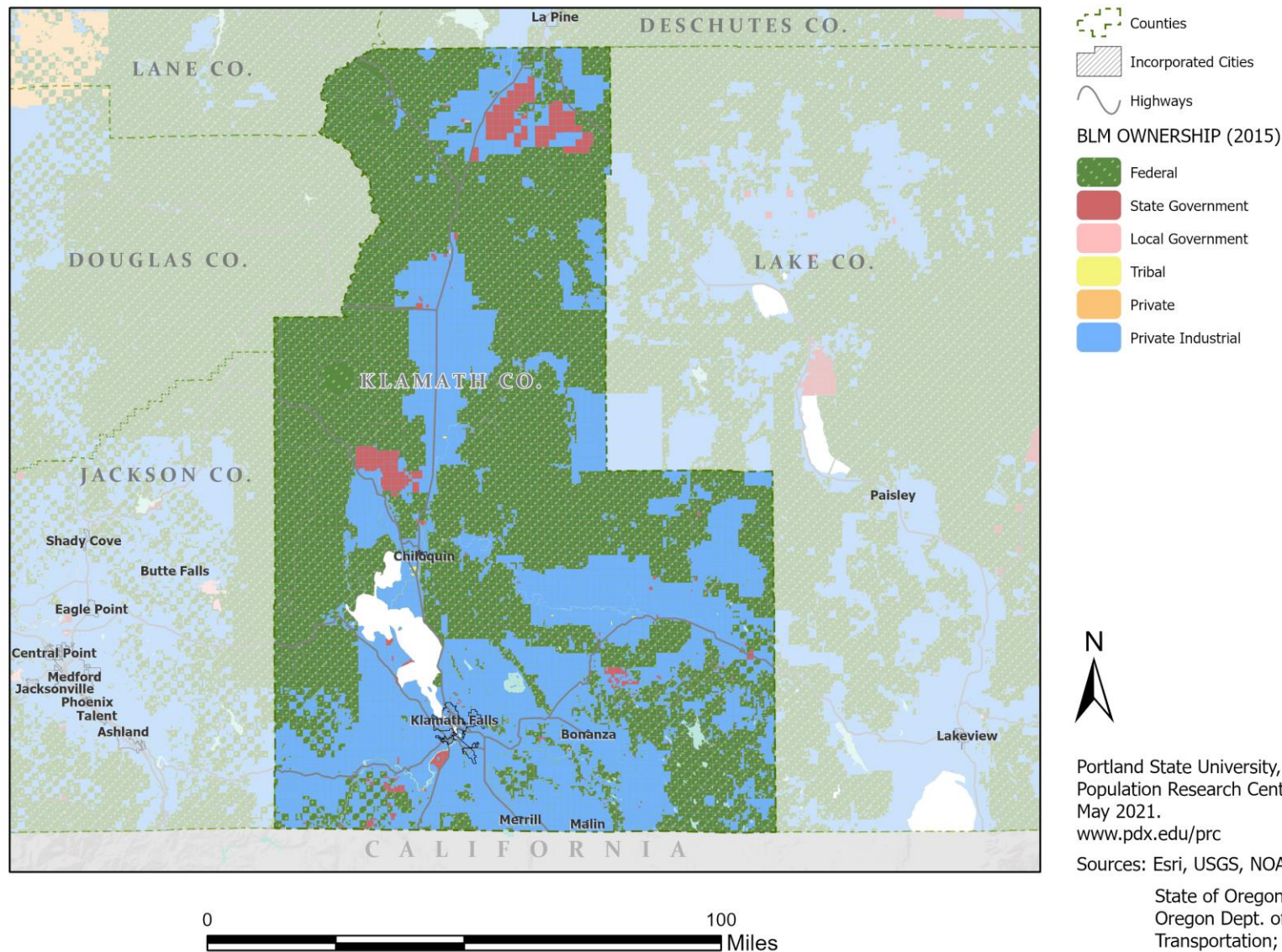
School Districts: Klamath County



Portland State University,
Population Research Center,
May 2021.
www.pdx.edu/prc

Sources: Esri, USGS, NOAA
State of Oregon GEO;
Oregon Dept. of
Transportation.

Land Ownership: Klamath County

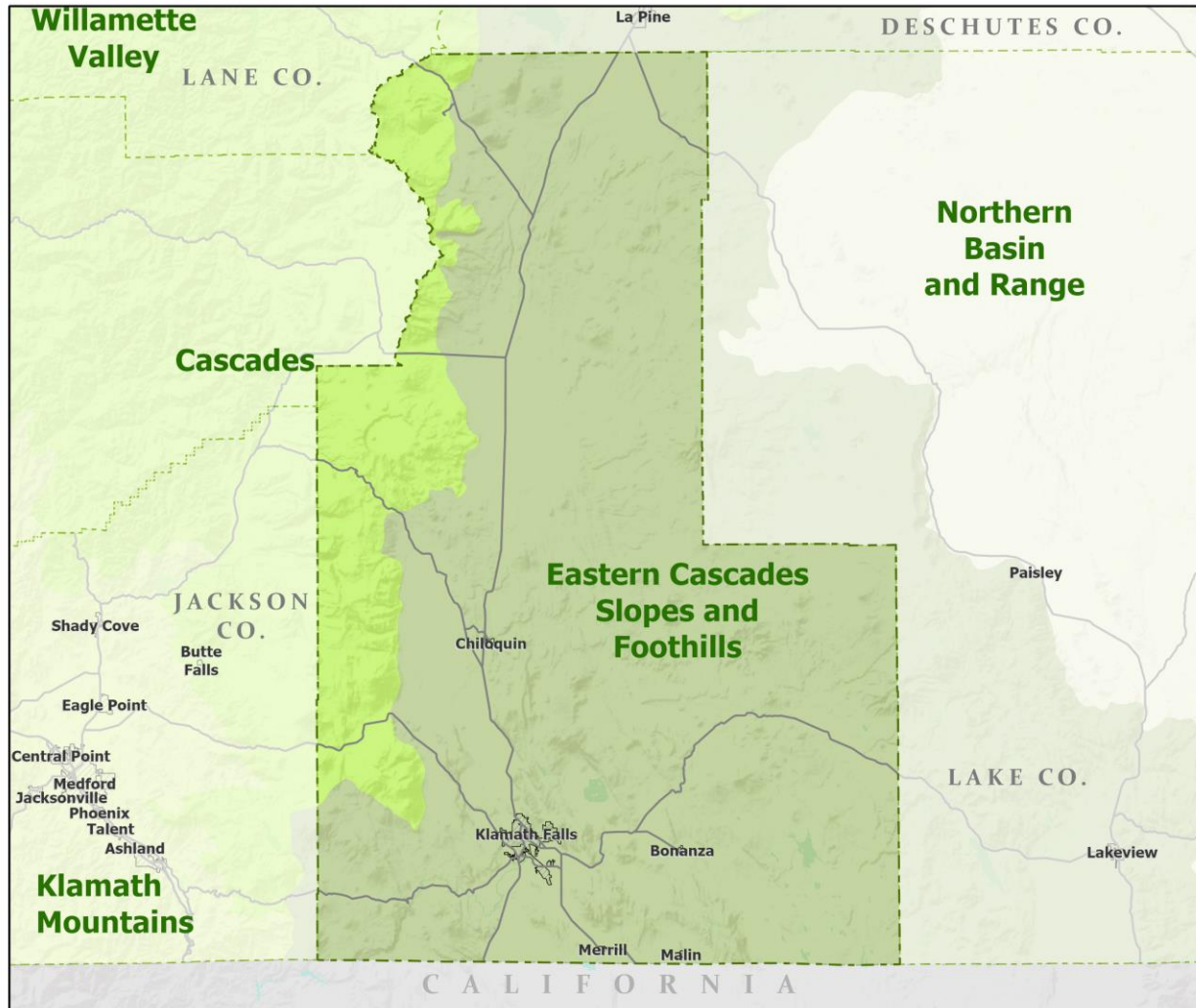


Portland State University,
Population Research Center,
May 2021.
www.pdx.edu/prc

Sources: Esri, USGS, NOAA

State of Oregon GEO;
Oregon Dept. of
Transportation; Bureau of
Land management.

Ecoregions: Klamath County



- Counties
- Incorporated Cities
- Highways
- LEVEL III ECOREGIONS OF OREGON (2006)
- Cascades
- Eastern Cascades Slopes and Foothills
- Klamath Mountains
- Northern Basin and Range
- Willamette Valley



Portland State University,
Population Research Center,
May 2021.
www.pdx.edu/prc

Sources: Esri, USGS, NOAA
State of Oregon GEO;
Oregon Dept. of
Transportation.

0 100 Miles

Land Cover: Klamath County

