

Jefferson County Overview

House and Senate Committees on Redistricting

June 8, 2021

July 1, 2020 population estimate	24,105
Population rank	25th
Share of state population	0.6%
Density (per square mile)	13.5
Density rank	22nd
Area (square miles)	1,791
Area rank	19th
Share of state area	1.8%



Sources: PSU Population Research Center; Oregon Blue Book.

Highways: Jefferson County



- Counties
- Incorporated Cities
- Highways

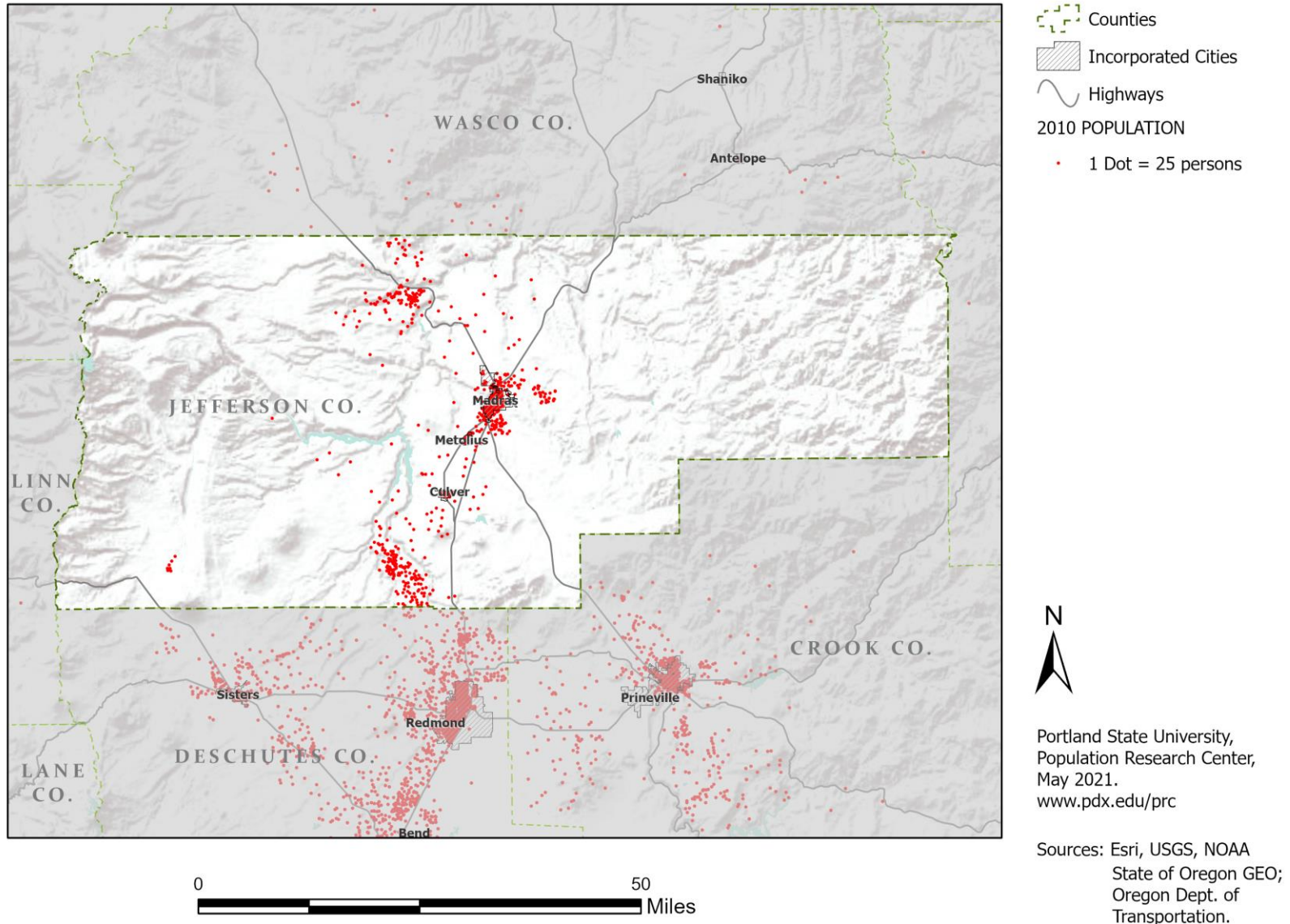


Portland State University,
Population Research Center,
May 2021.
www.pdx.edu/prc

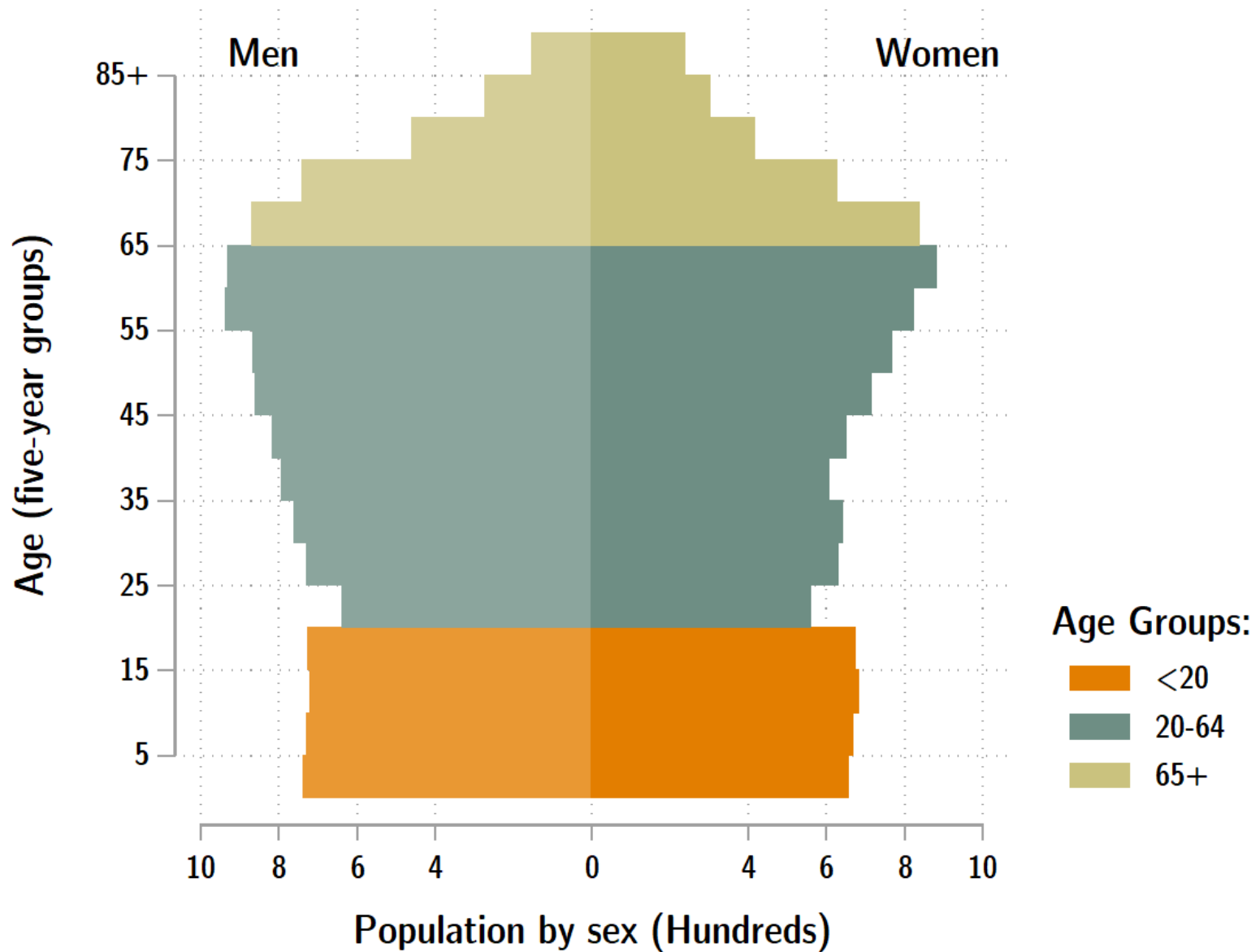
Sources: Esri, USGS, NOAA
State of Oregon GEO;
Oregon Dept. of
Transportation.

0 50 Miles

Population: Jefferson County



Jefferson population by age & sex: 2020



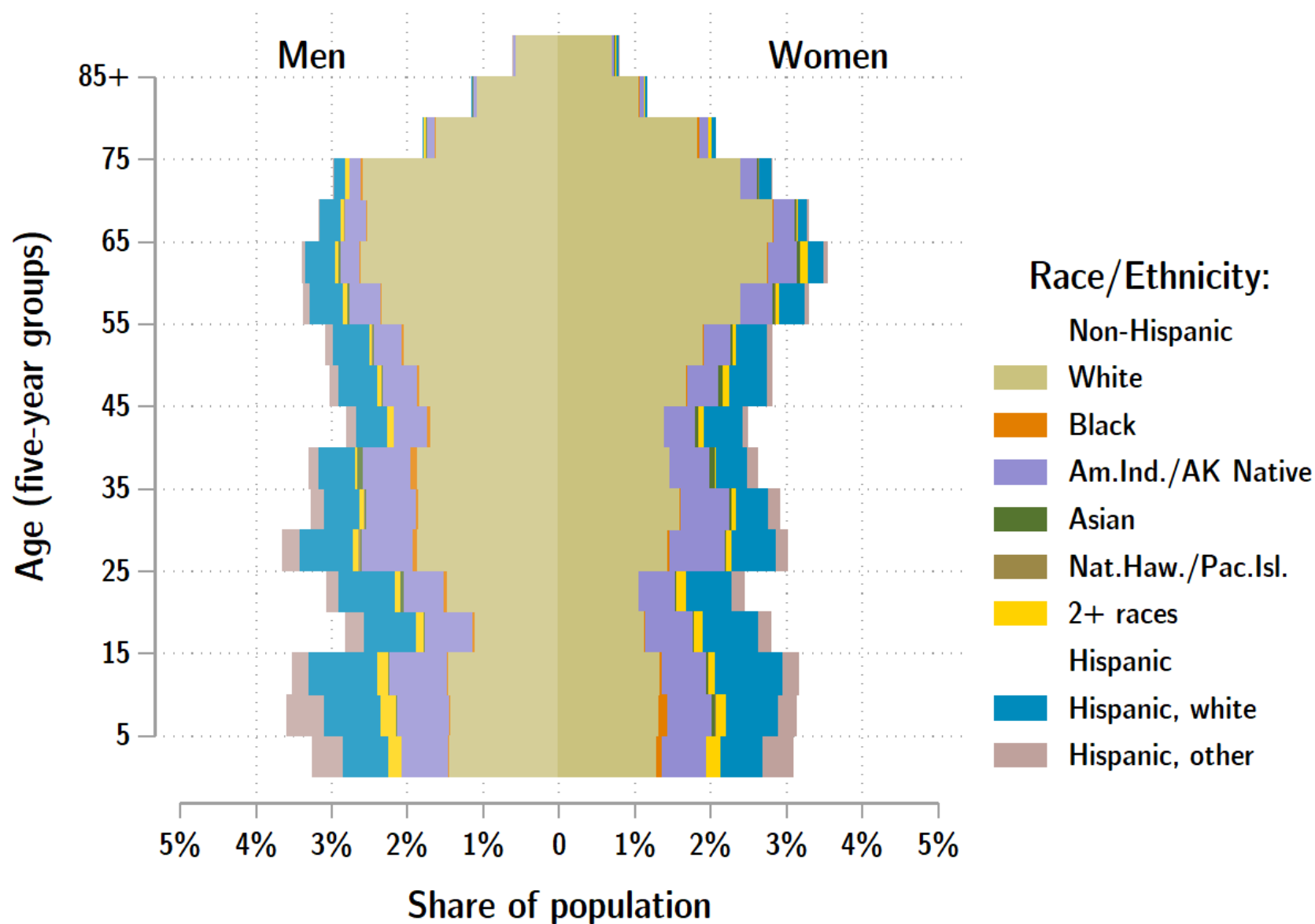
Source: Estimates by Population Research Center, PSU

Age Distribution, Jefferson County

Age Group	2020 Estimate	2020 Percent of Total	Oregon 2020 Percent of Total
Total population	24,105	100.0%	100.0%
Under age 5	1,393	5.8%	5.4%
Age 5 to 17	3,645	15.1%	14.9%
Age 18 to 64	14,153	58.7%	61.1%
Age 65 and over	4,914	20.4%	18.6%

Source: PSU Population Research Center July 1, 2020 Population Estimates

Jefferson County population by age & sex: 2019



Source: Estimates by US Census Bureau

Race and Ethnicity, Jefferson County

	2010 Census	2010 Census Percent	2015-19 ACS Estimate	2015-19 ACS Percent	Oregon 2015-19 ACS Percent
HISPANIC OR LATINO AND RACE					
Total population	21,720	100.0%	23,607	100.0%	100.0%
Hispanic or Latino	4,195	19.3%	4,715	20.0%*	13.0%
Not Hispanic or Latino	17,525	80.7%	18,892	80.0%*	87.0%
White alone	13,429	61.8%	14,260	60.4%*	75.7%
Black or African American alone	117	0.5%	179	0.8%*	1.8%
American Indian and Alaska Native alone	3,360	15.5%	3,723	15.8%	0.9%
Asian alone	83	0.4%	146	0.6%*	4.3%
Native Hawaiian and Other Pacific Islander alone	23	0.1%	22	0.1%	0.4%
Some Other Race alone	34	0.2%	5	0.0%*	0.1%
Two or More Races	479	2.2%	557	2.4%	3.7%

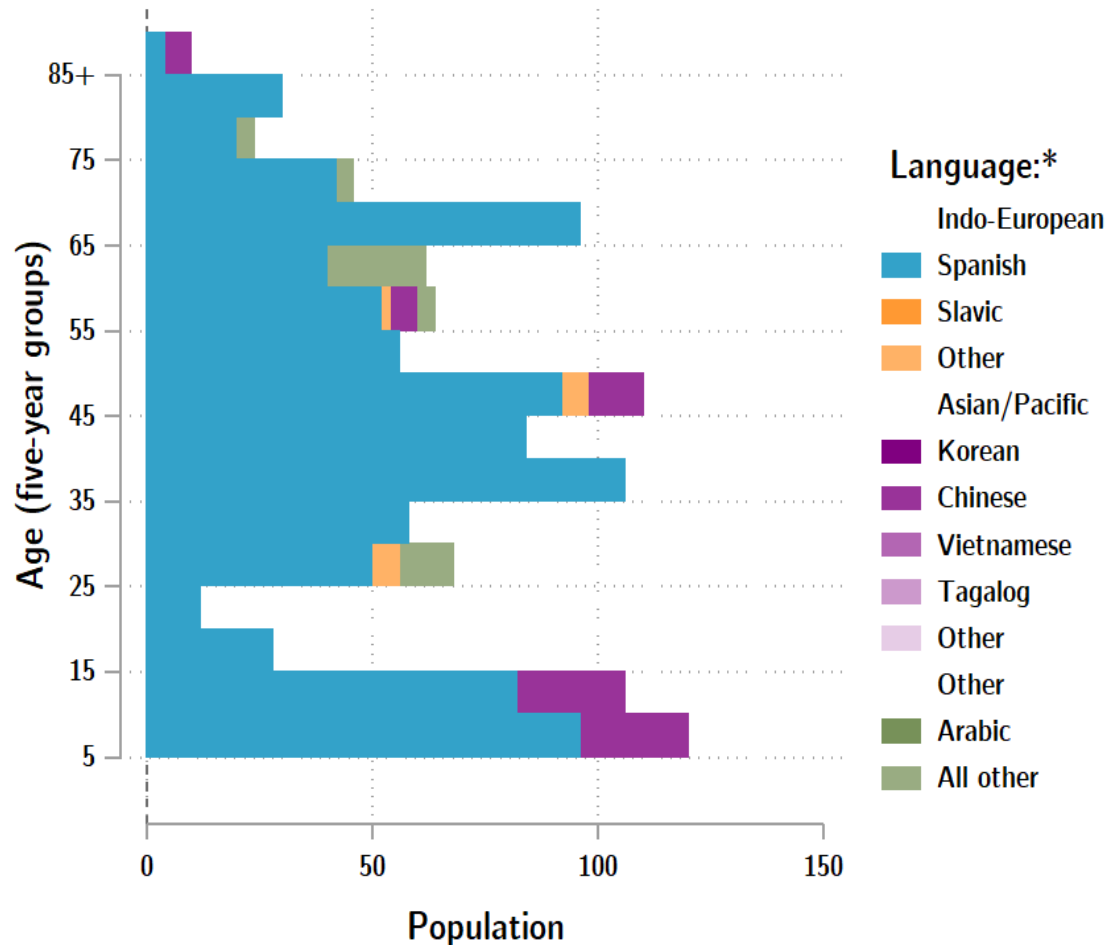
	2010 Census	2010 Census Percent	2015-19 ACS Estimate	2015-19 ACS Percent	Oregon 2015-19 ACS Percent
RACE ALONE OR IN COMBINATION WITH ONE OR MORE OTHER RACES**					
White	15,666	72.1%	17,610	74.6%*	88.8%
Black or African American	206	0.9%	304	1.3%*	2.9%
American Indian and Alaska Native	4,207	19.4%	4,608	19.5%	3.1%
Asian	188	0.9%	245	1.0%*	6.0%
Native Hawaiian and Other Pacific Islander	84	0.4%	136	0.6%	0.8%
Some Other Race	2,254	10.4%	1,684	7.1%*	3.6%

Source: U.S. Census Bureau, 2010 Census and 2019 5-year American Community Survey estimates.

* Difference between 2010 Census and 2015-19 ACS is statistically significant at the 90% confidence level.

** Total may add to more than 100% due to persons identifying as more than one race.

Jefferson County population by age & language: 2019



Language Spoken at Home Speak English less than "very well" Jefferson County

Languages	Estimate
Total Population Age 5 and Older	22,130
Speaking English less than "very well"	1,071
Spanish	947
Russian, Polish, or other Slavic languages	0
Other Indo-European languages	14
Korean	0
Chinese (incl. Cantonese and Mandarin)	74
Vietnamese	0
Tagalog (incl. Filipino)	0
Other Asian and Pacific Island languages	0
Arabic	0
Other languages	36

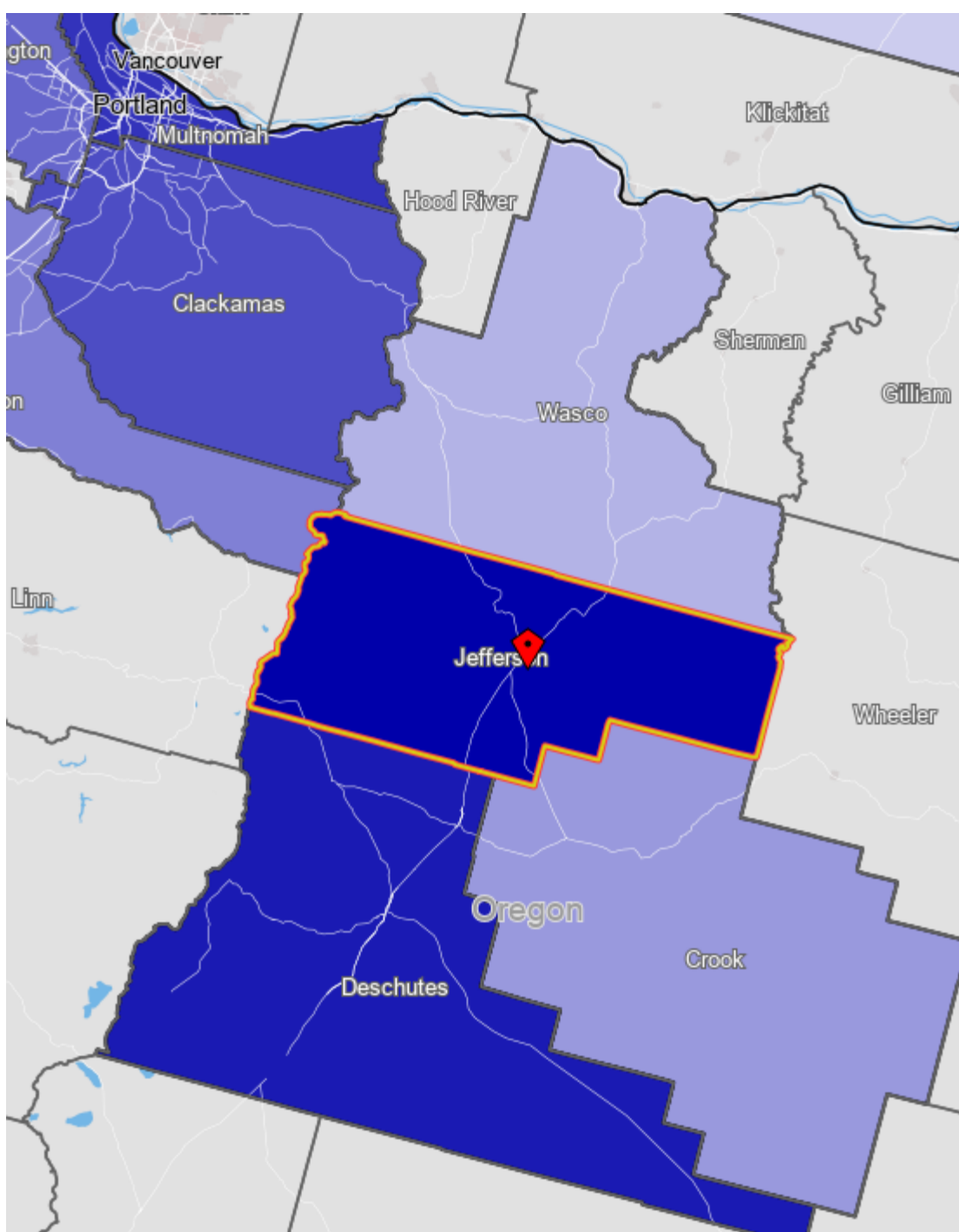
Source: U.S. Census Bureau American Community Survey 2019 5-year estimates, Table C16001.

Note: * Languages for persons who speak English less than very well.

Source: ACS tables B16004, C16001, PUMS; PEP estimates; Analysis by PRC, PSU

[Link to Table C16001](#) for all counties, including margins of error.

[Visualization](#) of language data by census tract within county.

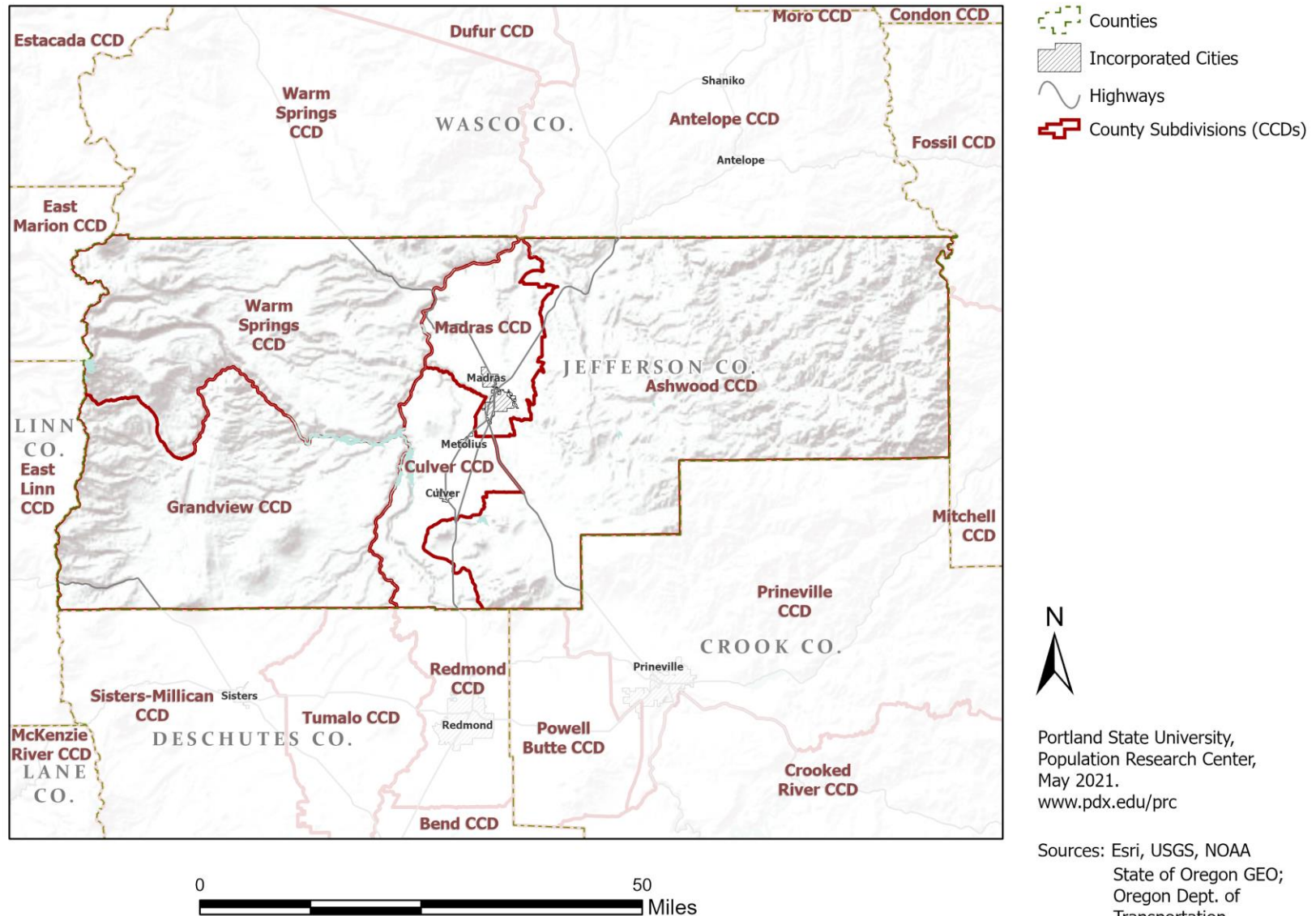


Jefferson County Commute Flows

Jobs Counts by Counties Where Workers are Employed - All Jobs

	2018	
	Count	Share
All Counties	9,426	100.0%
Jefferson County, OR	4,005	42.5%
Deschutes County, OR	2,450	26.0%
Multnomah County, OR	645	6.8%
Clackamas County, OR	313	3.3%
Washington County, OR	250	2.7%
Marion County, OR	225	2.4%
Crook County, OR	201	2.1%
Wasco County, OR	121	1.3%
Yakima County, WA	111	1.2%
Umatilla County, OR	105	1.1%
All Other Locations	1,000	10.6%

County Subdivisions (CCDs): Jefferson County



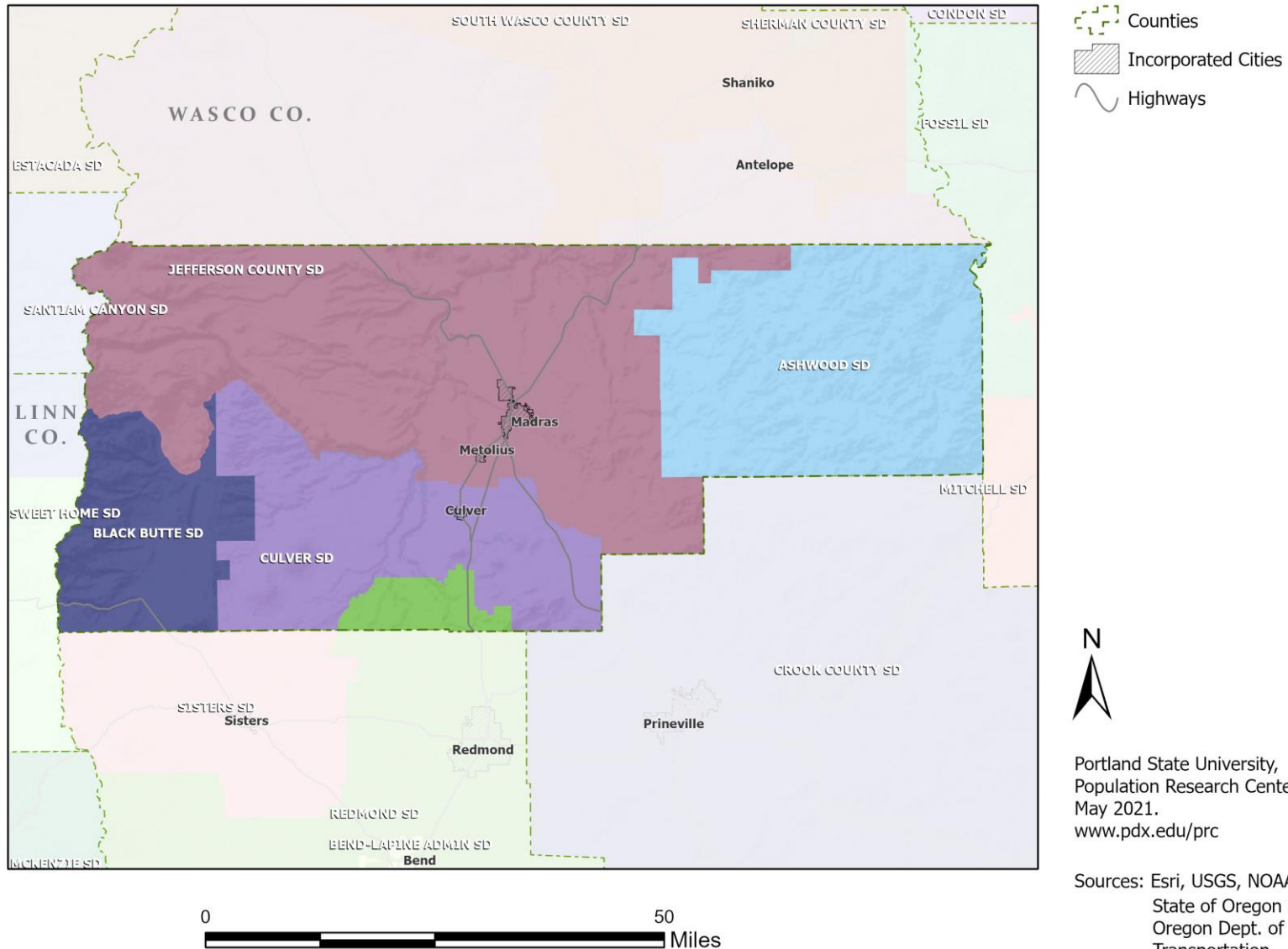
Jefferson County Employment by Sector by Census County Division

Sector	Oregon	County Total	Ashwood CCD	Culver CCD	Grand- view CCD	Madras CCD	Warm Springs CCD
Total, All Jobs*	1,904,601	6,666	227	886	95	4,162	1,296
Goods-Producing	18.6%	26.3%	28.6%	35.2%	9.5%	31.3%	5.2%
Natural Resources and Mining	2.7%	7.5%	26.4%	18.1%	4.2%	6.4%	0.8%
Construction	5.9%	1.9%	2.2%	6.8%	5.3%	0.9%	1.5%
Manufacturing	10.0%	17.0%	0.0%	10.4%	0.0%	24.1%	2.9%
Service Providing	81.4%	73.7%	71.4%	64.8%	90.5%	68.7%	94.8%
Trade, Transportation, and Utilities	18.6%	12.9%	4.4%	21.2%	4.2%	14.9%	2.9%
Information	2.0%	0.7%	0.0%	0.0%	5.3%	0.6%	1.2%
Financial Activities	4.6%	2.0%	0.0%	0.9%	5.3%	1.8%	3.5%
Professional and Business Services	13.4%	4.4%	0.0%	3.0%	15.8%	5.7%	1.0%
Education and Health Services	23.1%	18.7%	0.0%	17.5%	7.4%	23.6%	8.0%
Leisure and Hospitality	11.4%	12.9%	0.0%	11.2%	46.3%	12.3%	16.2%
Other Services	4.2%	3.8%	0.0%	8.1%	5.3%	3.9%	0.8%
Public Administration	4.2%	18.2%	67.0%	2.8%	1.1%	5.9%	61.0%

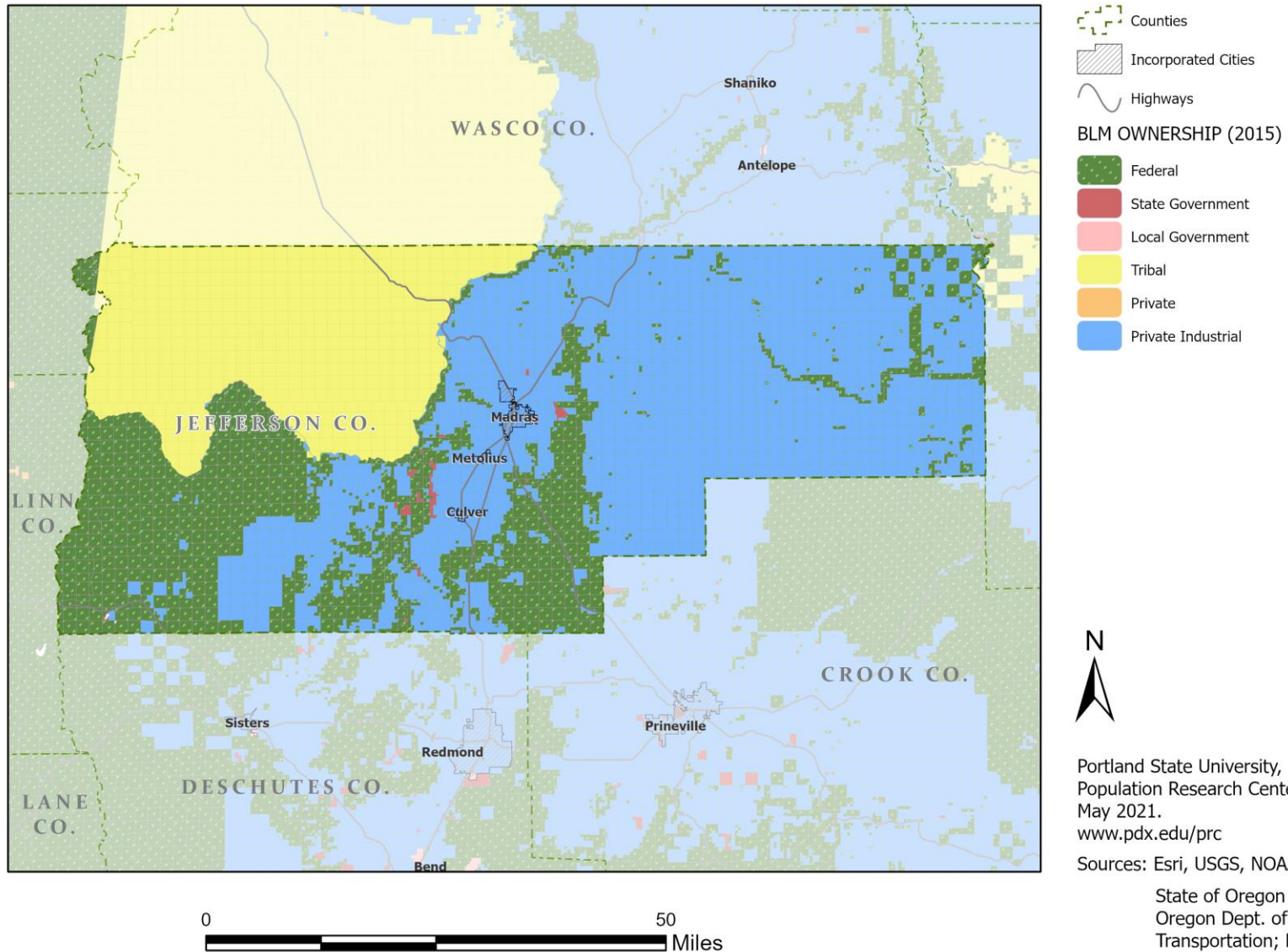
Source: U.S. Census Bureau, LEHD Origin-Destination Employment Statistics, 2018 Q2

* Jobs covered by unemployment insurance and federal workers.

School Districts: Jefferson County



Land Ownership: Jefferson County



Portland State University,
Population Research Center,
May 2021.
www.pdx.edu/prc

Sources: Esri, USGS, NOAA

State of Oregon GEO;
Oregon Dept. of
Transportation; Bureau of
Land management.

Ecoregions: Jefferson County



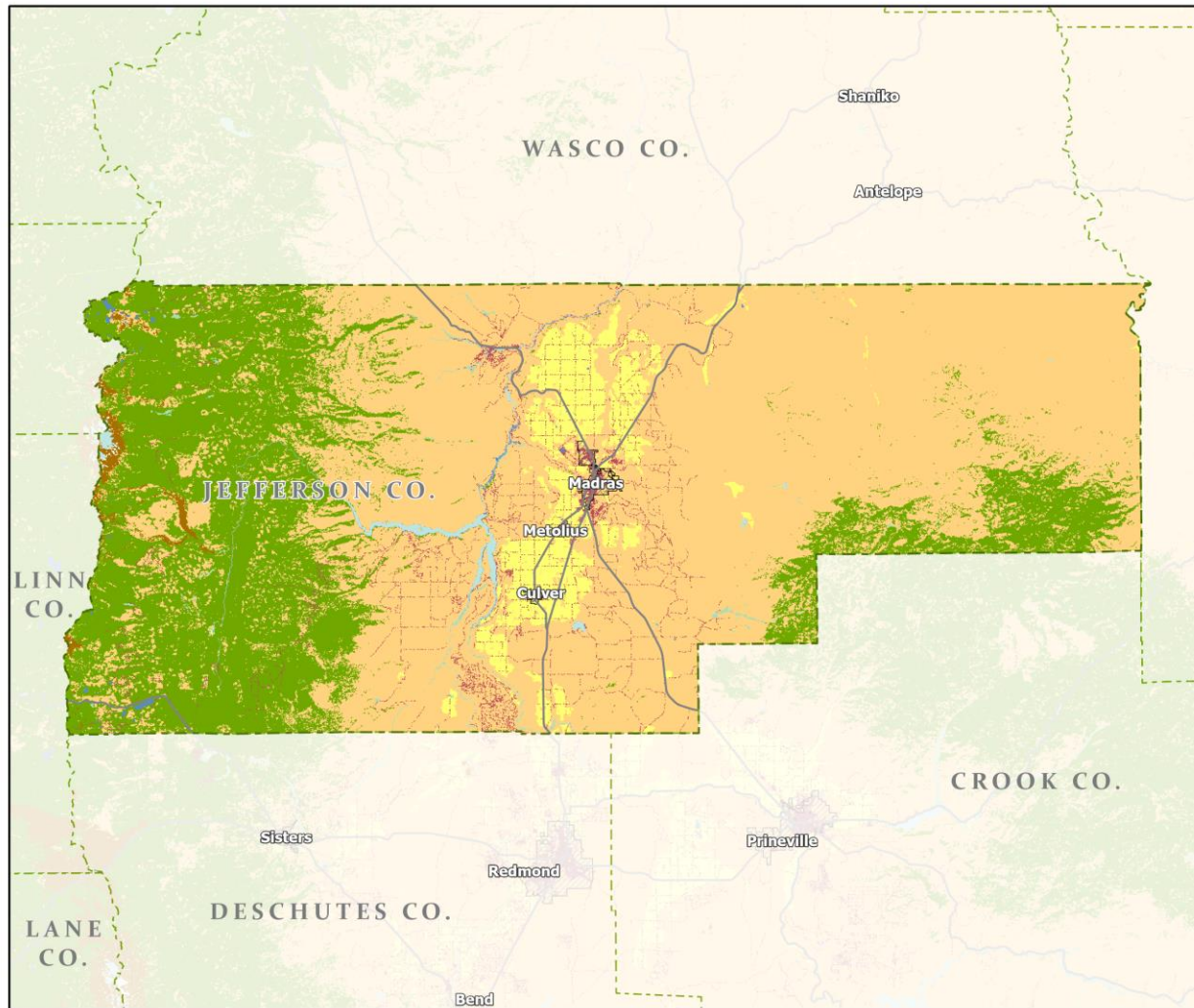
- Counties
- Incorporated Cities
- Highways
- LEVEL III ECOREGIONS OF OREGON (2006)
 - Blue Mountains
 - Cascades
 - Columbia Plateau
 - Eastern Cascades Slopes and Foothills



Portland State University,
Population Research Center,
May 2021.
www.pdx.edu/prc

Sources: Esri, USGS, NOAA
State of Oregon GEO;
Oregon Dept. of
Transportation.

Land Cover: Jefferson County



- Counties
- Incorporated Cities
- Highways

NATIONAL LAND COVER

- Developed
- Cultivated Crops/Pasture/Hay
- Barren Land
- Forest
- Grasslands/Scrub/Sedge
- Lichens/Moss
- Wetlands
- Perennial Snow/Ice
- Open Water



Portland State University,
Population Research Center,
May 2021.
www.pdx.edu/prc

Sources: Esri, USGS, NOAA
State of Oregon GEO;
Oregon Dept. of
Transportation.