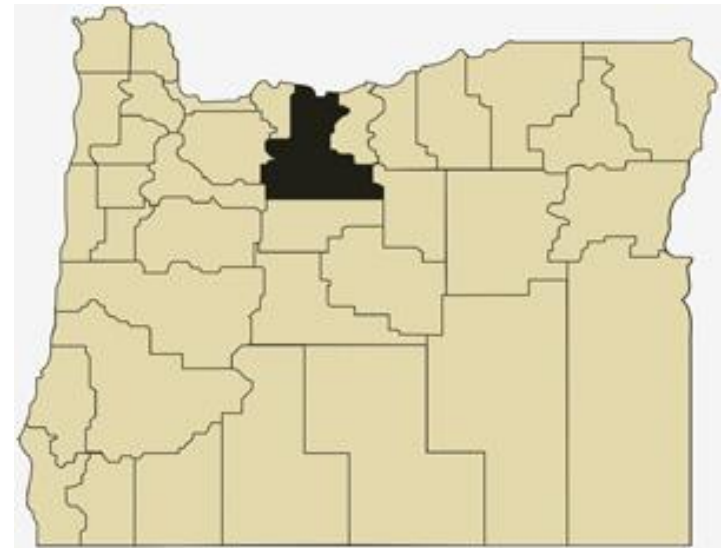


# Wasco County Overview

## House and Senate Committees on Redistricting

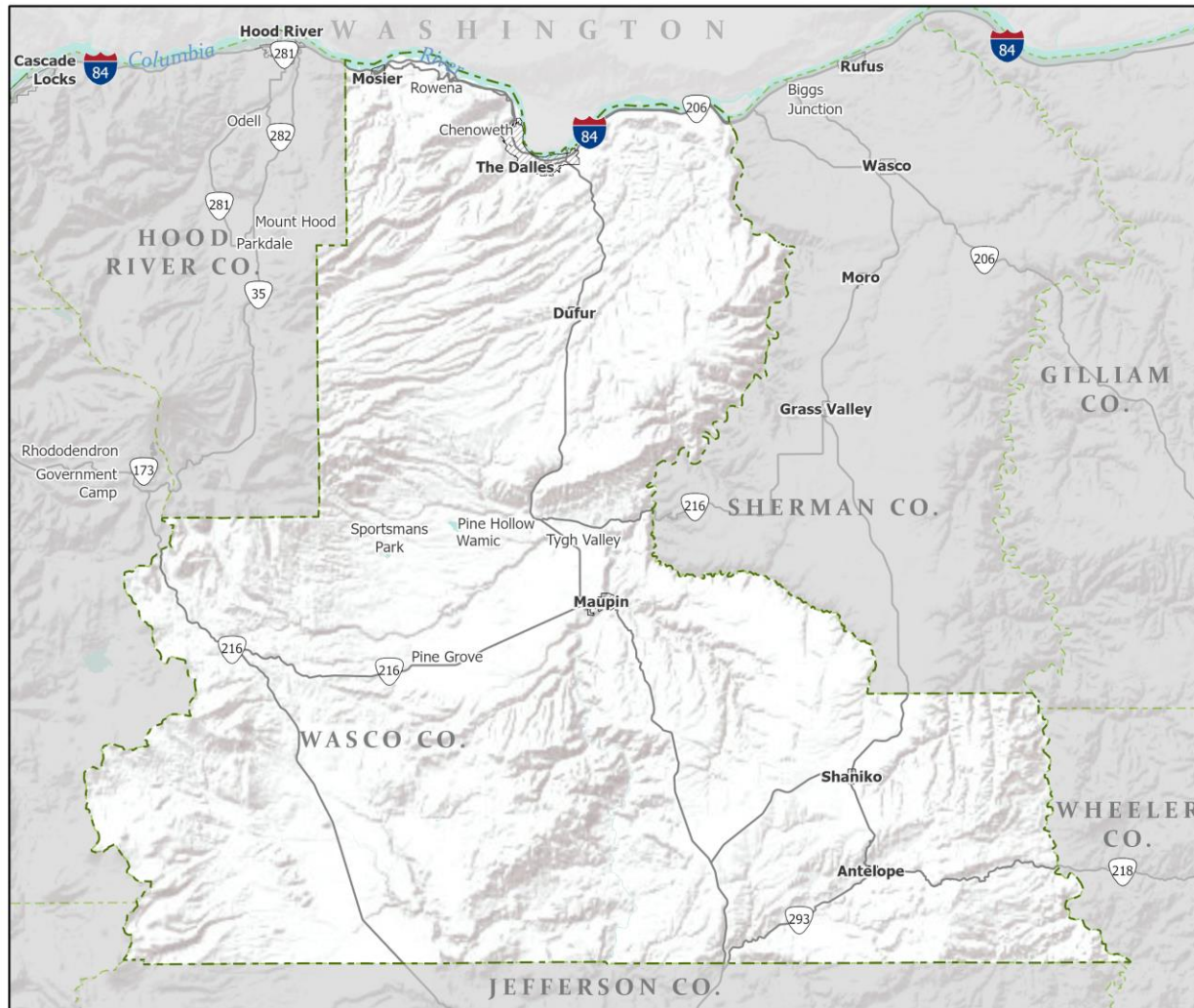
### June 8, 2021

July 1, 2020 population estimate	27,295
Population rank	21st
Share of state population	0.6%
Density (per square mile)	11.4
Density rank	24th
Area (square miles)	2,396
Area rank	14th
Share of state area	2.5%



Sources: PSU Population Research Center; Oregon Blue Book.

# Highways: Wasco County



- Counties
- Incorporated Cities
- Highways

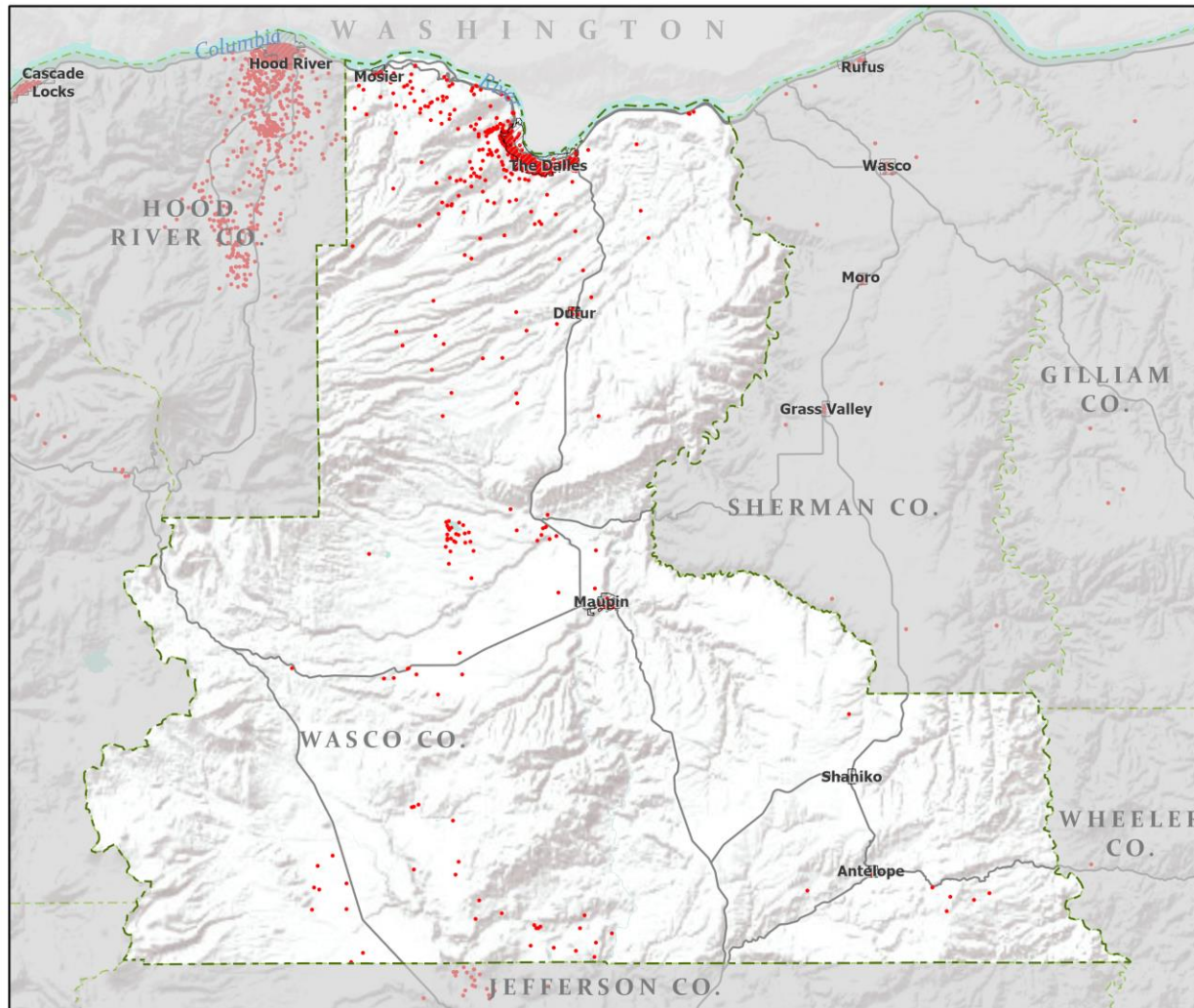


Portland State University,  
Population Research Center,  
May 2021.  
[www.pdx.edu/prc](http://www.pdx.edu/prc)

Sources: Esri, USGS, NOAA  
State of Oregon GEO;  
Oregon Dept. of  
Transportation.

0 50 Miles

# Population: Wasco County



- Counties
- Incorporated Cities
- Highways
- 2010 POPULATION
- 1 Dot = 25 persons

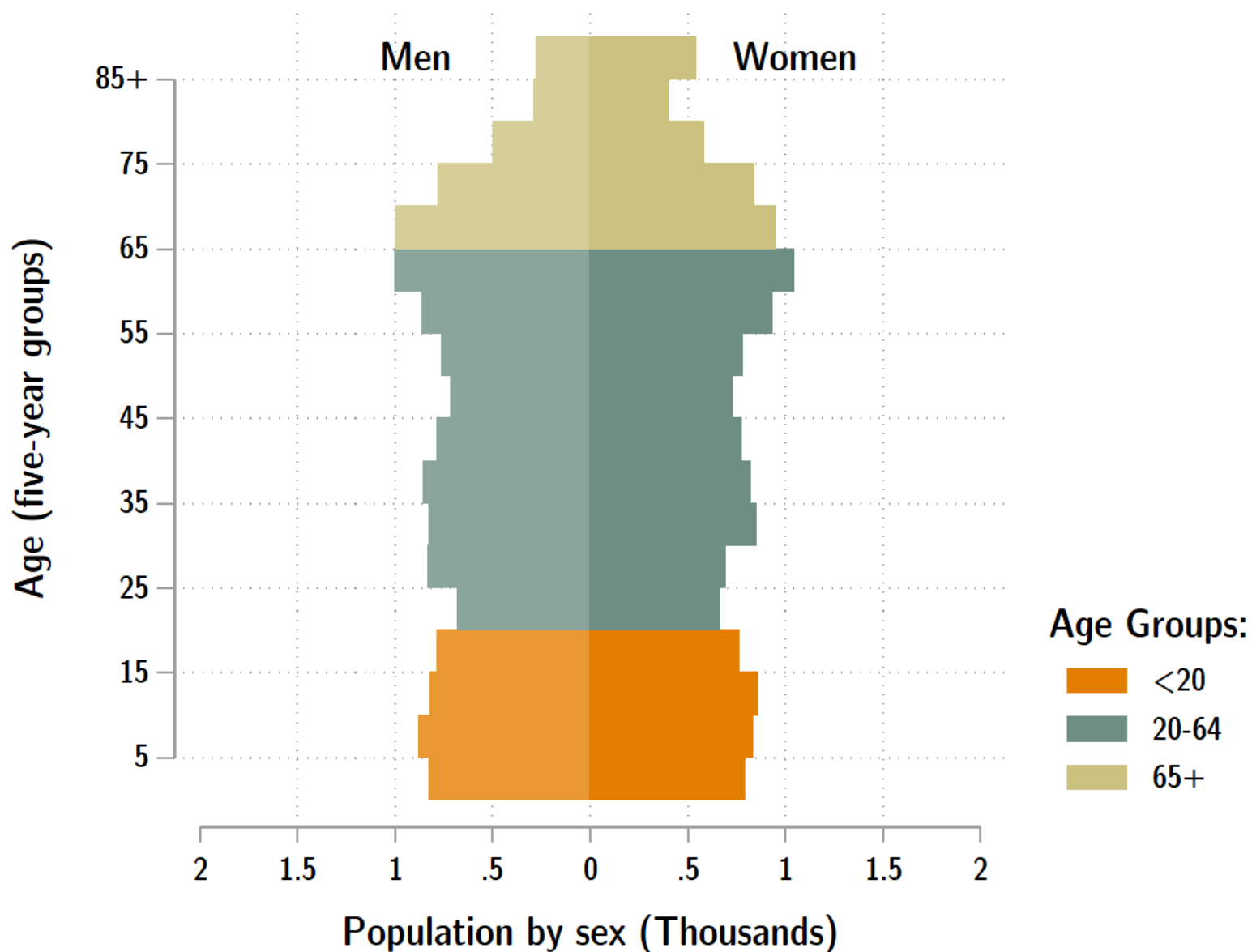


Portland State University,  
Population Research Center,  
May 2021.  
[www.pdx.edu/prc](http://www.pdx.edu/prc)

Sources: Esri, USGS, NOAA  
State of Oregon GEO;  
Oregon Dept. of  
Transportation.

0 50 Miles

# Wasco population by age & sex: 2020



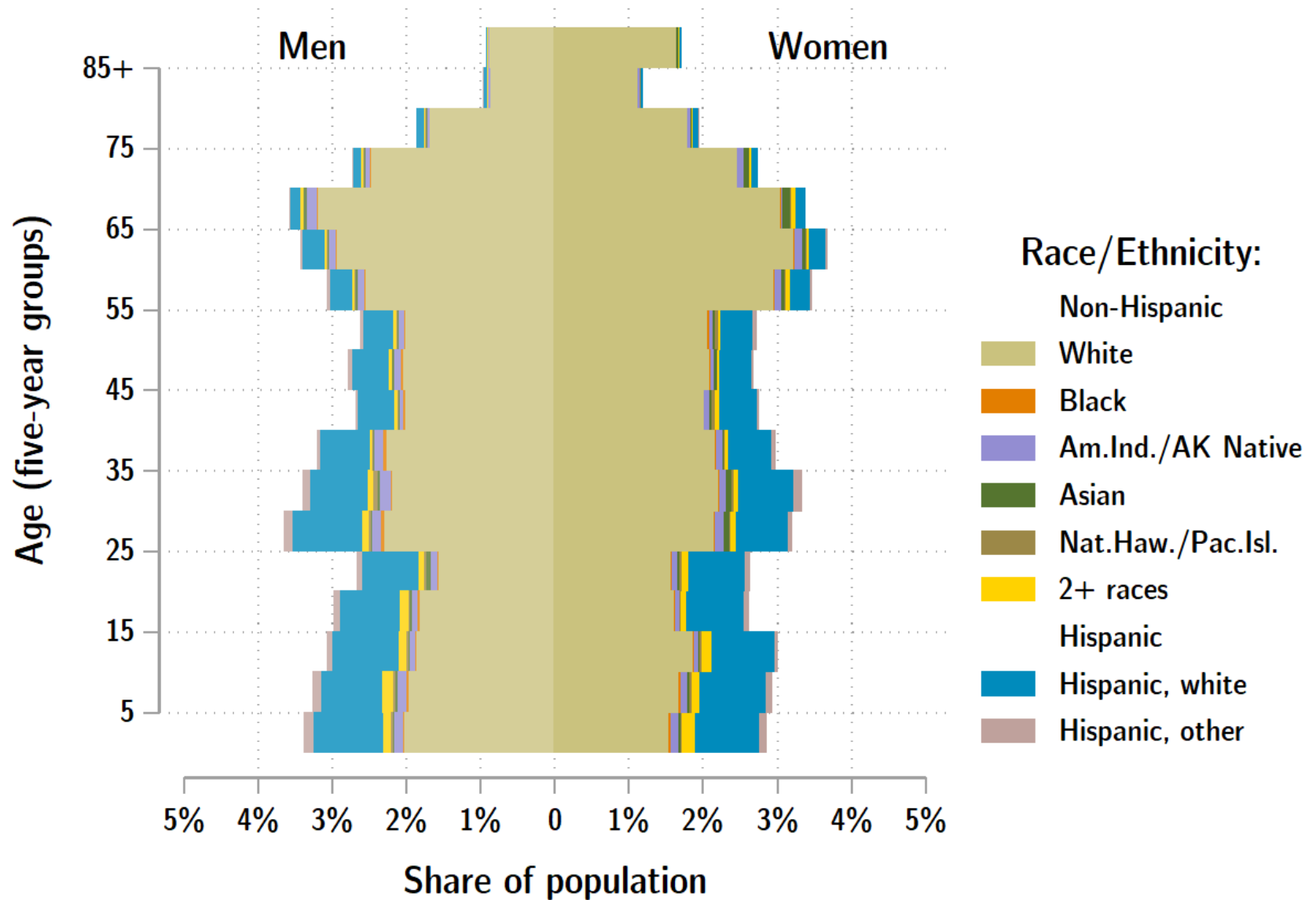
Source: Estimates by Population Research Center, PSU

# Age Distribution, Wasco County

Age Group	2020 Estimate	2020 Percent of Total	Oregon 2020 Percent of Total
Total population	27,295	100.0%	100.0%
Under age 5	1,620	5.9%	5.4%
Age 5 to 17	4,327	15.9%	14.9%
Age 18 to 64	15,202	55.7%	61.1%
Age 65 and over	6,147	22.5%	18.6%

Source: PSU Population Research Center July 1, 2020 Population Estimates

# Wasco County population by age & sex: 2019



Source: Estimates by US Census Bureau

# Race and Ethnicity, Wasco County

	2010 Census	2010 Census Percent	2015-19 ACS Estimate	2015-19 ACS Percent	Oregon 2015-19 ACS Percent
<b>HISPANIC OR LATINO AND RACE</b>					
Total population	25,213	100.0%	26,130	100.0%	100.0%
Hispanic or Latino	3,743	14.8%	4,755	18.2%*	13.0%
Not Hispanic or Latino	21,470	85.2%	21,375	81.8%*	87.0%
White alone	19,556	77.6%	19,482	74.6%*	75.7%
Black or African American alone	85	0.3%	79	0.3%	1.8%
American Indian and Alaska Native alone	1,018	4.0%	773	3.0%*	0.9%
Asian alone	191	0.8%	238	0.9%	4.3%
Native Hawaiian and Other Pacific Islander alone	142	0.6%	154	0.6%	0.4%
Some Other Race alone	16	0.1%	0	0.0%	0.1%
Two or More Races	462	1.8%	649	2.5%*	3.7%

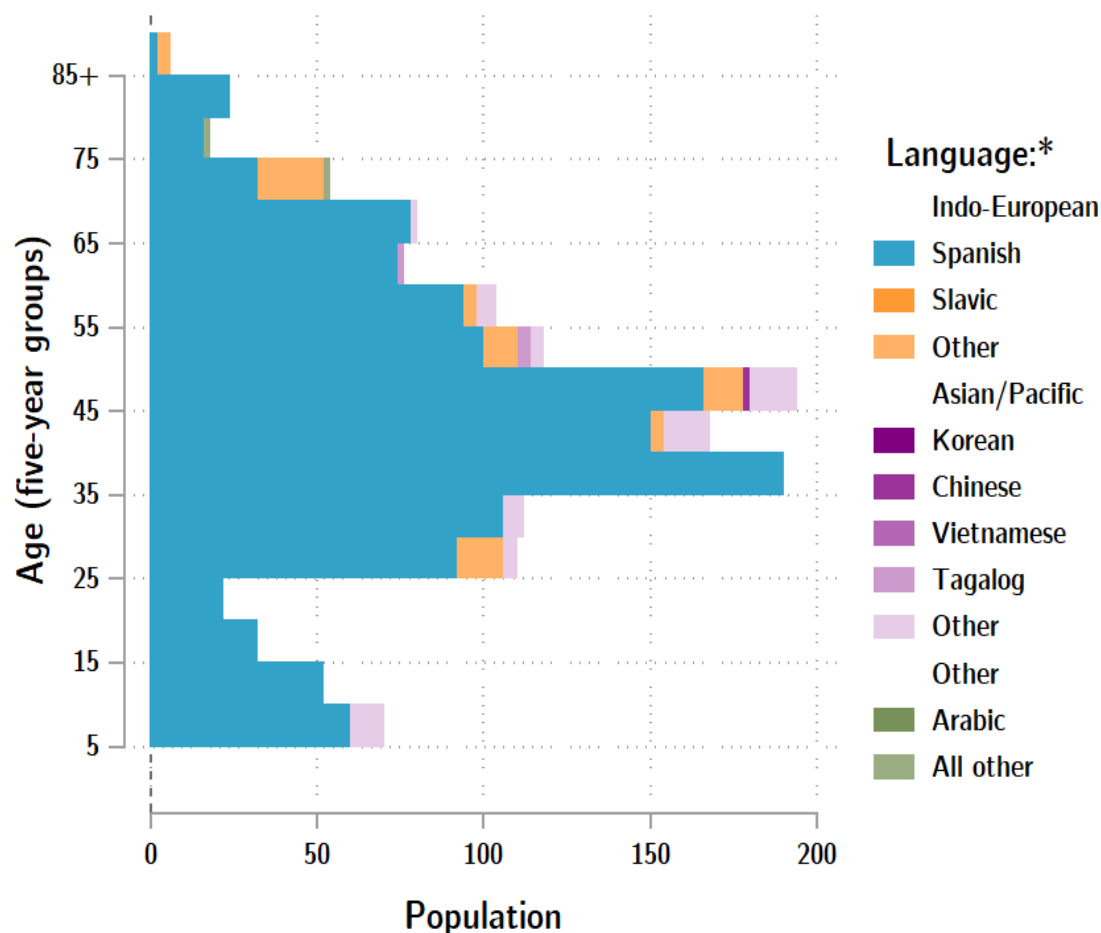
	2010 Census	2010 Census Percent	2015-19 ACS Estimate	2015-19 ACS Percent	Oregon 2015-19 ACS Percent
<b>RACE ALONE OR IN COMBINATION WITH ONE OR MORE OTHER RACES**</b>					
White	22,279	88.4%	23,802	91.1%*	88.8%
Black or African American	165	0.7%	300	1.1%*	2.9%
American Indian and Alaska Native	1,461	5.8%	1,166	4.5%*	3.1%
Asian	315	1.2%	424	1.6%*	6.0%
Native Hawaiian and Other Pacific Islander	193	0.8%	264	1.0%*	0.8%
Some Other Race	1,462	5.8%	1,029	3.9%*	3.6%

Source: U.S. Census Bureau, 2010 Census and 2019 5-year American Community Survey estimates.

\* Difference between 2010 Census and 2015-19 ACS is statistically significant at the 90% confidence level.

\*\* Total may add to more than 100% due to persons identifying as more than one race.

## Wasco County population by age & language: 2019



## Language Spoken at Home Speak English less than "very well" Wasco County

Languages	Estimate
Total Population Age 5 and Older	24,476
Speaking English less than "very well"	1,439
Spanish	1,287
Russian, Polish, or other Slavic languages	0
Other Indo-European languages	68
Korean	8
Chinese (incl. Cantonese and Mandarin)	2
Vietnamese	0
Tagalog (incl. Filipino)	7
Other Asian and Pacific Island languages	58
Arabic	0
Other languages	9

Source: U.S. Census Bureau American Community Survey 2019 5-year estimates, Table C16001.

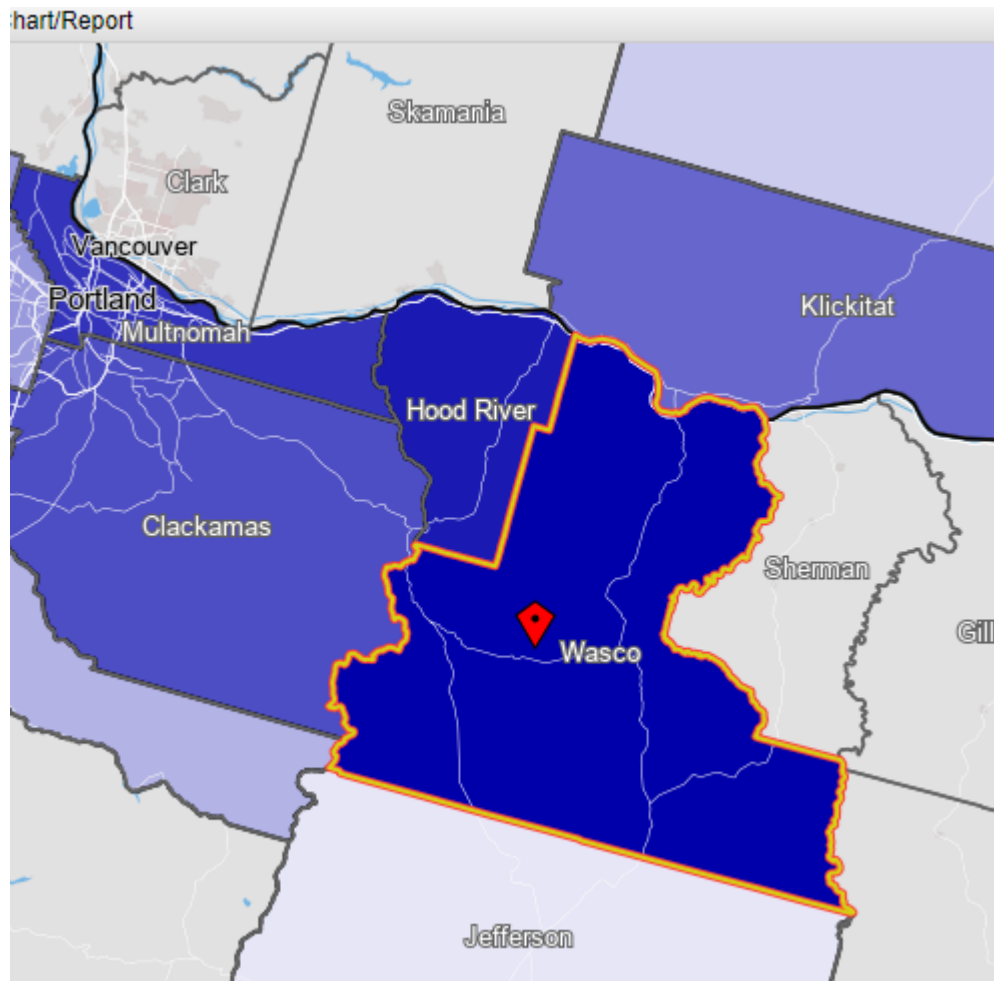
Note: \* Languages for persons who speak English less than very well.

Source: ACS tables B16004, C16001, PUMS; PEP estimates; Analysis by PRC, PSU

[Link to Table C16001](#) for all counties, including margins of error.

[Visualization](#) of language data by census tract within county.

# Wasco County Commute Flows



**Jobs Counts by Counties Where Workers are Employed - All Jobs**

	2018	
	Count	Share
<a href="#">All Counties</a>	12,361	100.0%
<a href="#">Wasco County, OR</a>	5,995	48.5%
<a href="#">Hood River County, OR</a>	1,398	11.3%
<a href="#">Multnomah County, OR</a>	919	7.4%
<a href="#">Clackamas County, OR</a>	496	4.0%
<a href="#">Klickitat County, WA</a>	431	3.5%
<a href="#">Deschutes County, OR</a>	360	2.9%
<a href="#">Washington County, OR</a>	305	2.5%
<a href="#">Marion County, OR</a>	269	2.2%
<a href="#">Yakima County, WA</a>	222	1.8%
<a href="#">Jefferson County, OR</a>	221	1.8%
<a href="#">All Other Locations</a>	1,745	14.1%

# County Subdivisions (CCDs): Wasco County



- Counties
- Incorporated Cities
- Highways
- County Subdivisions (CCDs)



Portland State University,  
Population Research Center,  
May 2021.  
[www.pdx.edu/prc](http://www.pdx.edu/prc)

Sources: Esri, USGS, NOAA  
State of Oregon GEO;  
Oregon Dept. of  
Transportation.

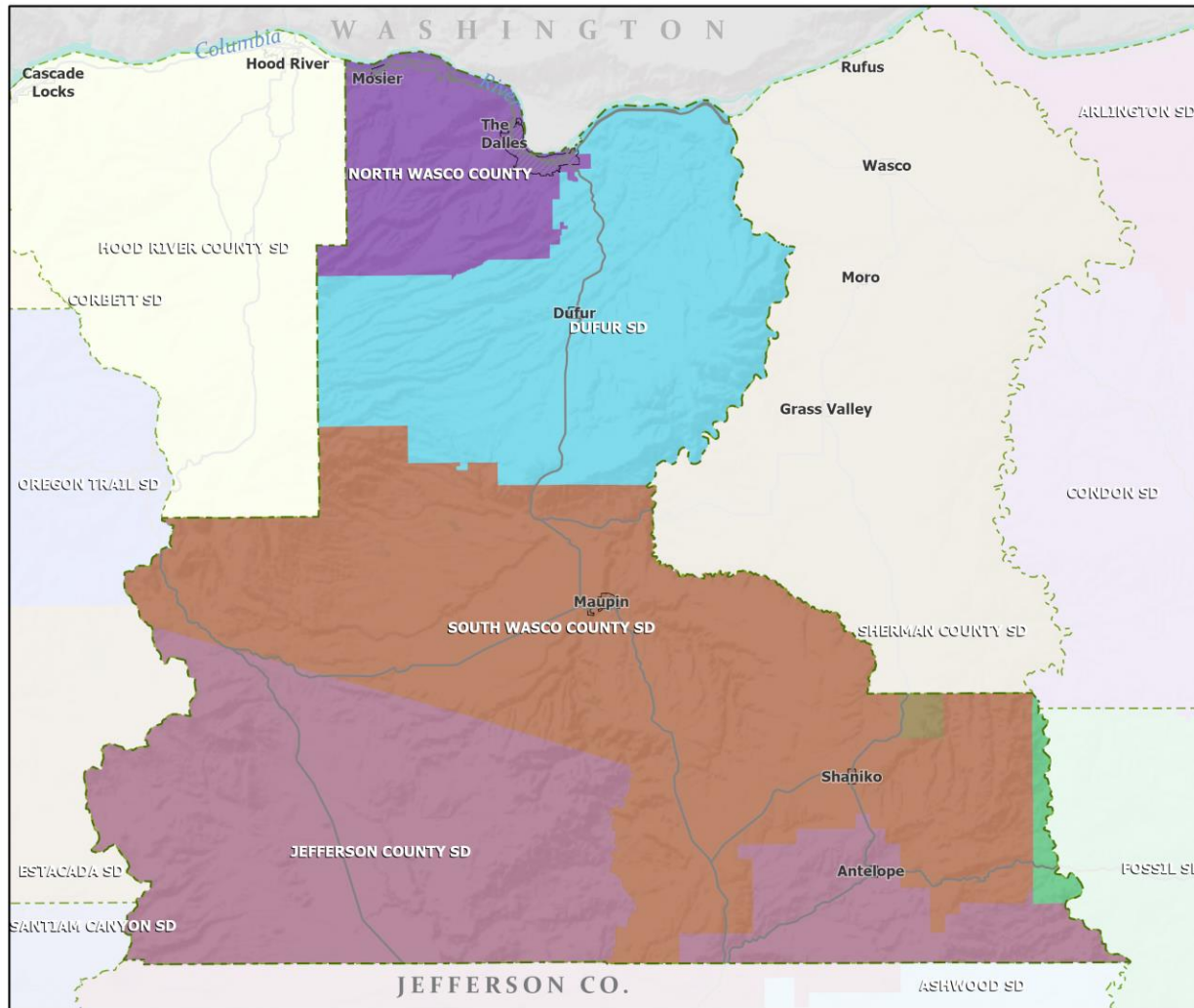
# Wasco County Employment by Sector by Census County Division

Sector	Oregon	County Total	Antelope CCD	Dufur CCD	The Dalles CCD	Warm Springs CCD
Total, All Jobs*	1,904,601	10,345	177	785	9,288	95
Goods-Producing	18.6%	19.4%	7.9%	39.4%	18.2%	0.0%
Natural Resources and Mining	2.7%	9.2%	7.3%	32.5%	7.4%	0.0%
Construction	5.9%	4.3%	0.6%	6.1%	4.2%	0.0%
Manufacturing	10.0%	5.9%	0.0%	0.8%	6.6%	0.0%
Service Providing	81.4%	80.6%	92.1%	60.6%	81.8%	100.0%
Trade, Transportation, and Utilities	18.6%	19.2%	49.2%	15.8%	19.1%	0.0%
Information	2.0%	1.9%	2.3%	0.0%	2.1%	0.0%
Financial Activities	4.6%	2.4%	0.0%	0.0%	2.7%	0.0%
Professional and Business Services	13.4%	6.8%	0.0%	6.8%	7.0%	0.0%
Education and Health Services	23.1%	29.0%	0.0%	20.9%	30.5%	0.0%
Leisure and Hospitality	11.4%	12.2%	0.0%	11.0%	11.6%	100.0%
Other Services	4.2%	5.2%	40.1%	3.7%	4.7%	0.0%
Public Administration	4.2%	3.9%	0.6%	2.5%	4.2%	0.0%

Source: U.S. Census Bureau, LEHD Origin-Destination Employment Statistics, 2018 Q2

\* Jobs covered by unemployment insurance and federal workers.

# School Districts: Wasco County



- Counties
- Incorporated Cities
- Highways

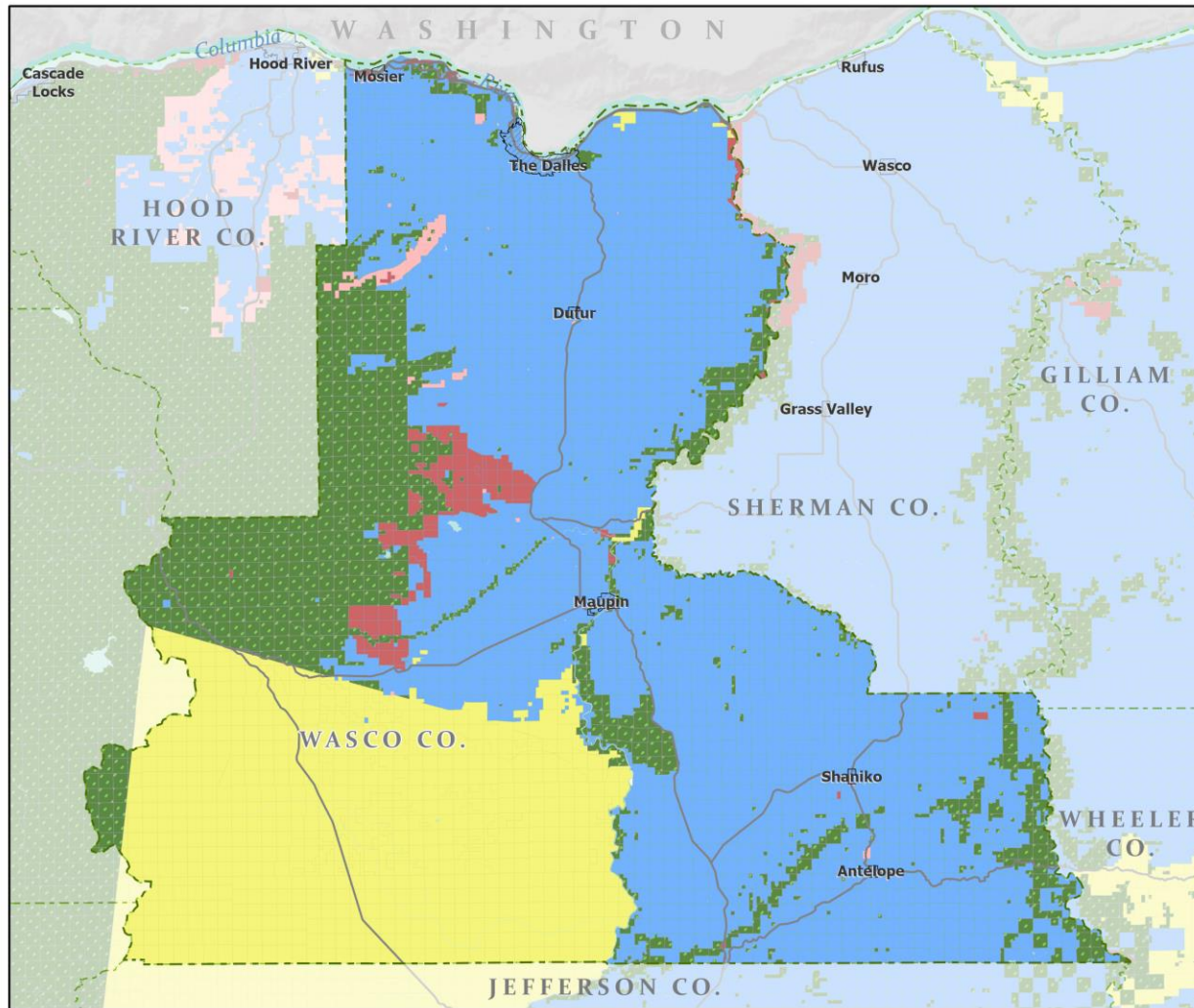


Portland State University,  
Population Research Center,  
May 2021.  
[www.pdx.edu/prc](http://www.pdx.edu/prc)

Sources: Esri, USGS, NOAA  
State of Oregon GEO;  
Oregon Dept. of  
Transportation.

0 50 Miles

# Land Ownership: Wasco County



Portland State University,  
Population Research Center,  
May 2021.  
[www.pdx.edu/prc](http://www.pdx.edu/prc)

Sources: Esri, USGS, NOAA

State of Oregon GEO;  
Oregon Dept. of  
Transportation; Bureau of  
Land management.

# Ecoregions: Wasco County



- Counties
- Incorporated Cities
- Highways
- LEVEL III ECOREGIONS OF OREGON (2006)
  - Blue Mountains
  - Cascades
  - Columbia Plateau
  - Eastern Cascades Slopes and Foothills



Portland State University,  
Population Research Center,  
May 2021.  
[www.pdx.edu/prc](http://www.pdx.edu/prc)

Sources: Esri, USGS, NOAA  
State of Oregon GEO;  
Oregon Dept. of  
Transportation.

# Land Cover: Wasco County



Portland State University,  
Population Research Center,  
May 2021.  
[www.pdx.edu/prc](http://www.pdx.edu/prc)

Sources: Esri, USGS, NOAA  
State of Oregon GEO;  
Oregon Dept. of  
Transportation.