

# Sherman County Overview

## House and Senate Committees on Redistricting

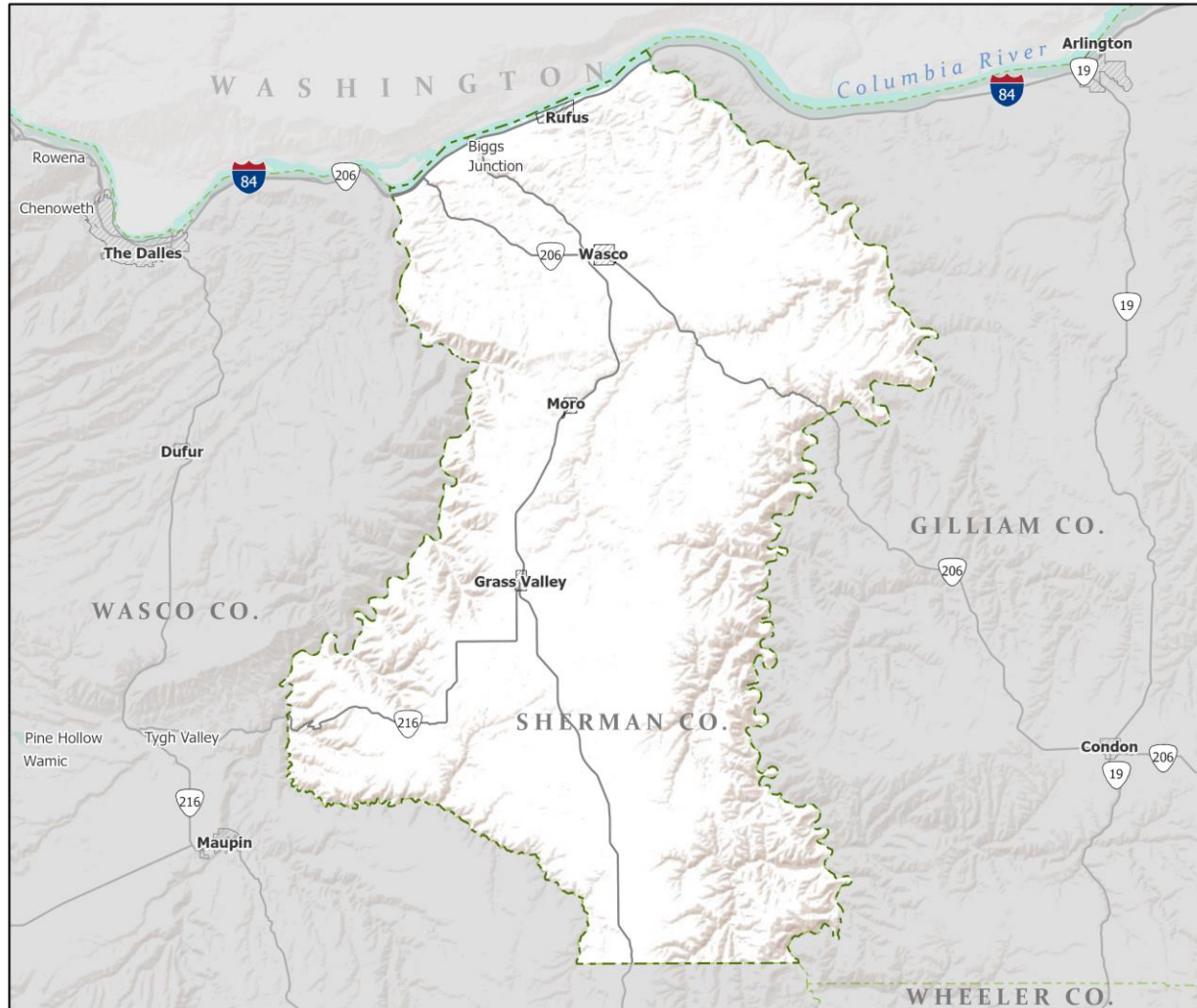
June 8, 2021

July 1, 2020 population estimate	1,795
Population rank	35th
Share of state population	<0.1%
Density (per square mile)	2.2
Density rank	31st
Area (square miles)	831
Area rank	29th
Share of state area	0.9%



Sources: PSU Population Research Center; Oregon Blue Book.

# Highways: Sherman County



- Counties
- Incorporated Cities
- Highways

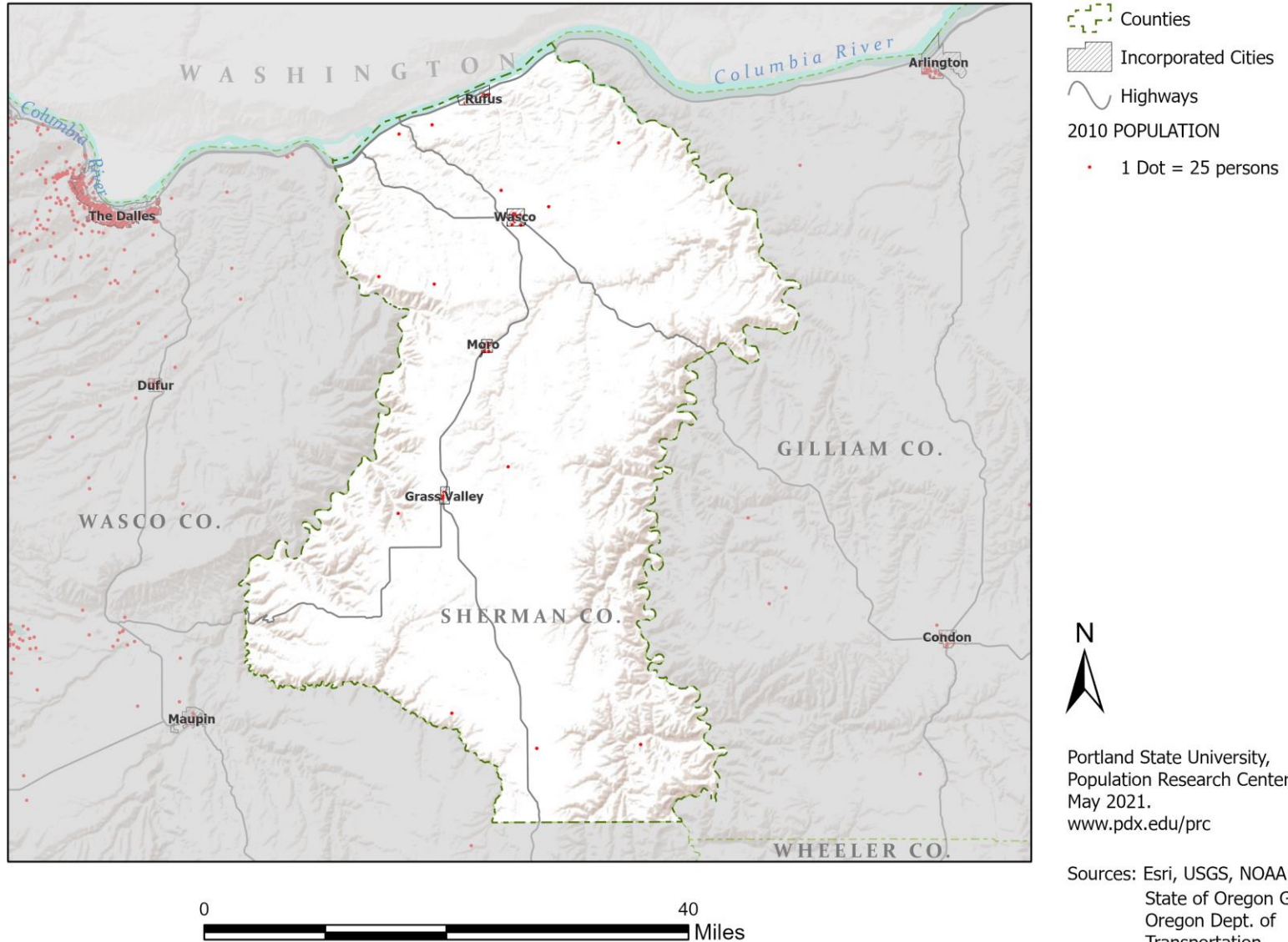


Portland State University,  
Population Research Center,  
May 2021.  
[www.pdx.edu/prc](http://www.pdx.edu/prc)

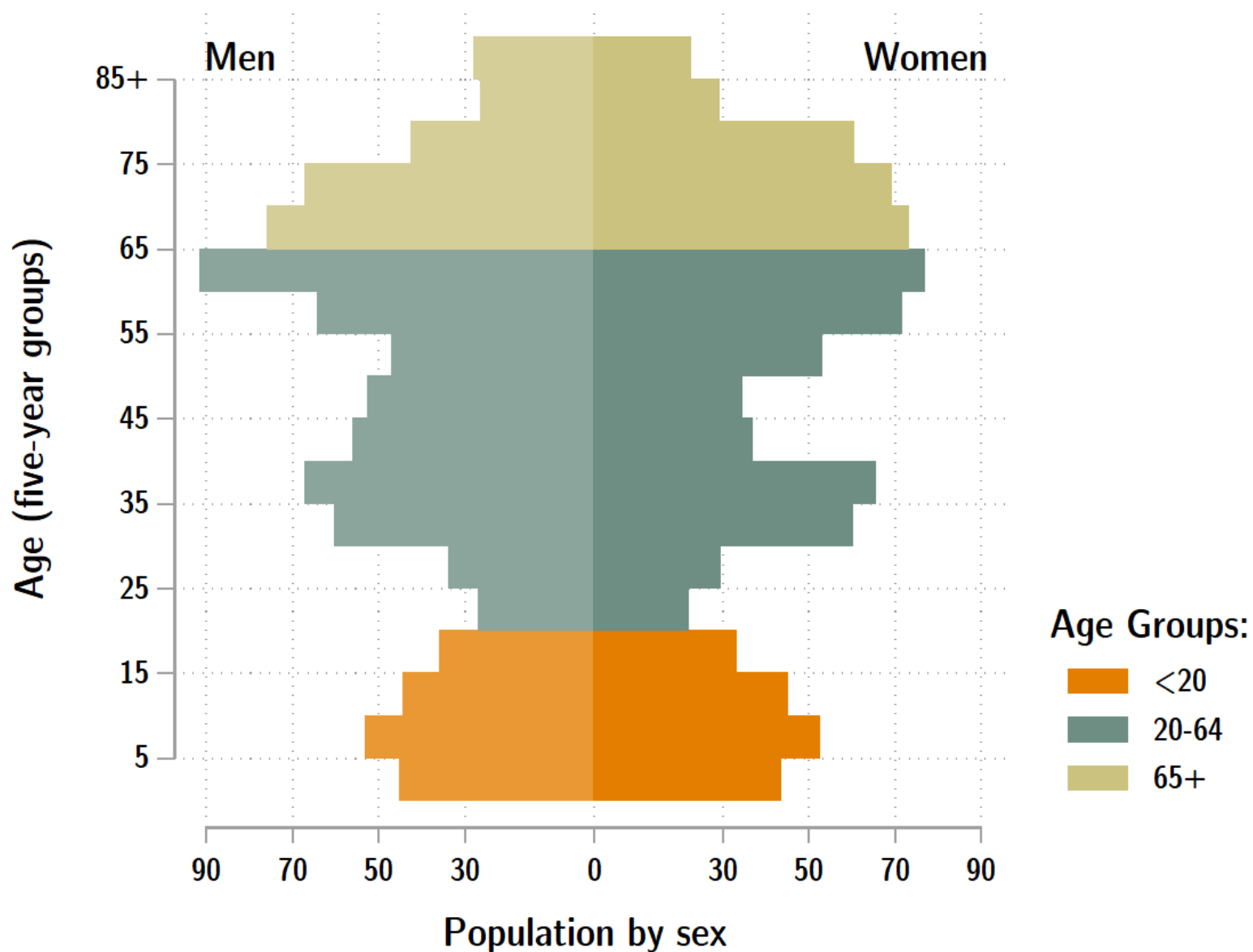
Sources: Esri, USGS, NOAA  
State of Oregon GEO;  
Oregon Dept. of  
Transportation.

0 40 Miles

# Population: Sherman County



# Sherman population by age & sex: 2020



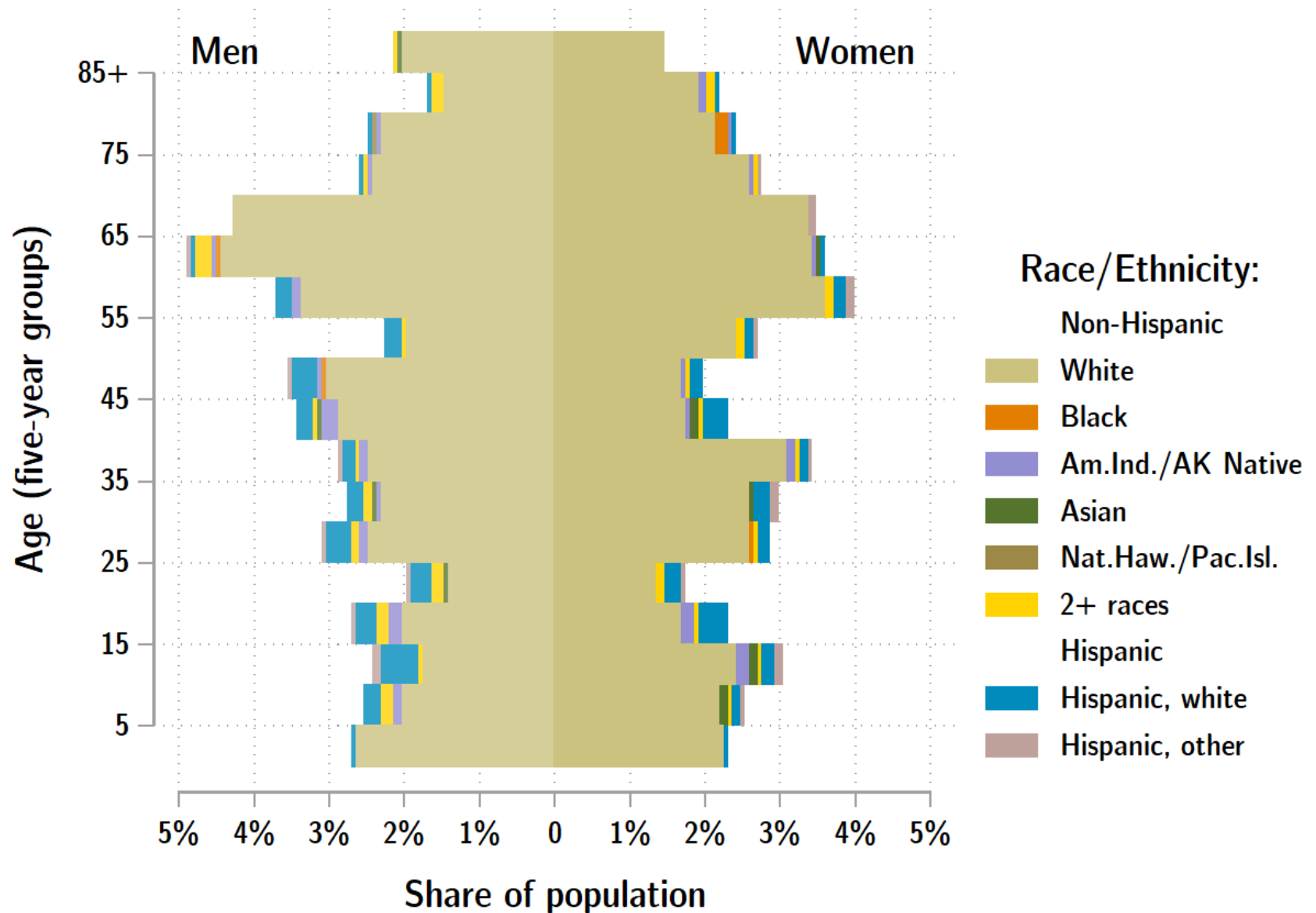
Source: Estimates by Population Research Center, PSU

# Age Distribution, Sherman County

Age Group	2020 Estimate	2020 Percent of Total	Oregon 2020 Percent of Total
Total population	1,795	100.0%	100.0%
Under age 5	88	4.9%	5.4%
Age 5 to 17	237	13.2%	14.9%
Age 18 to 64	975	54.3%	61.1%
Age 65 and over	494	27.5%	18.6%

Source: PSU Population Research Center July 1, 2020 Population Estimates

# Sherman County population by age & sex: 2019



Source: Estimates by US Census Bureau

# Race and Ethnicity, Sherman County

	2010 Census	2010 Census Percent	2015-19 ACS Estimate	2015-19 ACS Percent	Oregon 2015-19 ACS Percent
<b>HISPANIC OR LATINO AND RACE</b>					
Total population	1,765	100.0%	1,642	100.0%	100.0%
Hispanic or Latino	98	5.6%	81	4.9%*	13.0%
Not Hispanic or Latino	1,667	94.4%	1,561	95.1%*	87.0%
White alone	1,616	91.6%	1,467	89.3%	75.7%
Black or African American alone	2	0.1%	3	0.2%	1.8%
American Indian and Alaska Native alone	21	1.2%	12	0.7%*	0.9%
Asian alone	3	0.2%	2	0.1%	4.3%
Native Hawaiian and Other Pacific Islander alone	1	0.1%	23	1.4%*	0.4%
Some Other Race alone	6	0.3%	0	0.0%	0.1%
Two or More Races	18	1.0%	54	3.3%*	3.7%

	2010 Census	2010 Census Percent	2015-19 ACS Estimate	2015-19 ACS Percent	Oregon 2015-19 ACS Percent
<b>RACE ALONE OR IN COMBINATION WITH ONE OR MORE OTHER RACES**</b>					
White	1,679	95.1%	1,590	96.8%*	88.8%
Black or African American	7	0.4%	3	0.2%	2.9%
American Indian and Alaska Native	35	2.0%	65	4.0%	3.1%
Asian	15	0.8%	25	1.5%	6.0%
Native Hawaiian and Other Pacific Islander	1	0.1%	26	1.6%*	0.8%
Some Other Race	62	3.5%	19	1.2%*	3.6%

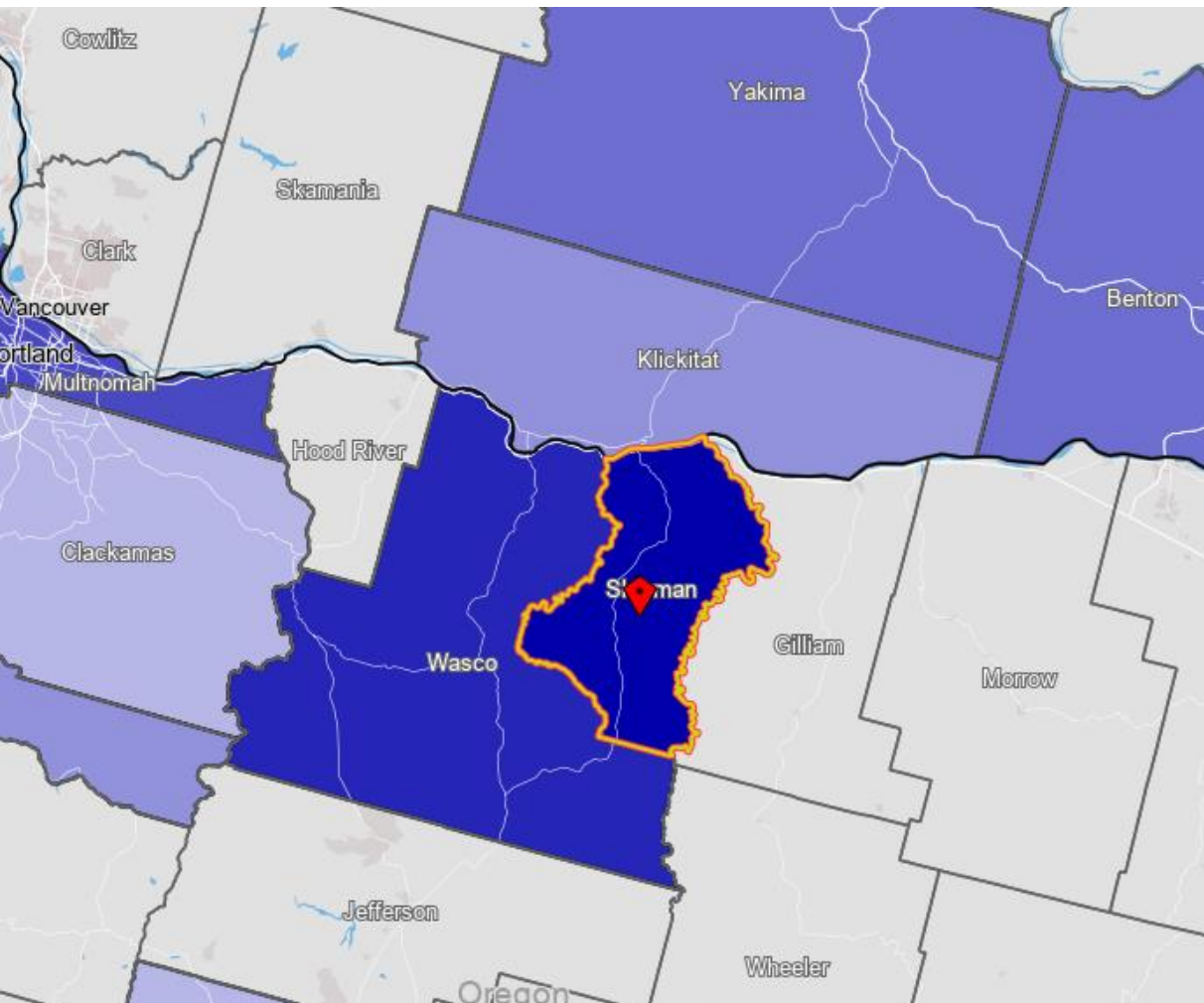
Source: U.S. Census Bureau, 2010 Census and 2019 5-year American Community Survey estimates.

\* Difference between 2010 Census and 2015-19 ACS is statistically significant at the 90% confidence level.

\*\* Total may add to more than 100% due to persons identifying as more than one race.



# Sherman County Commute Flows

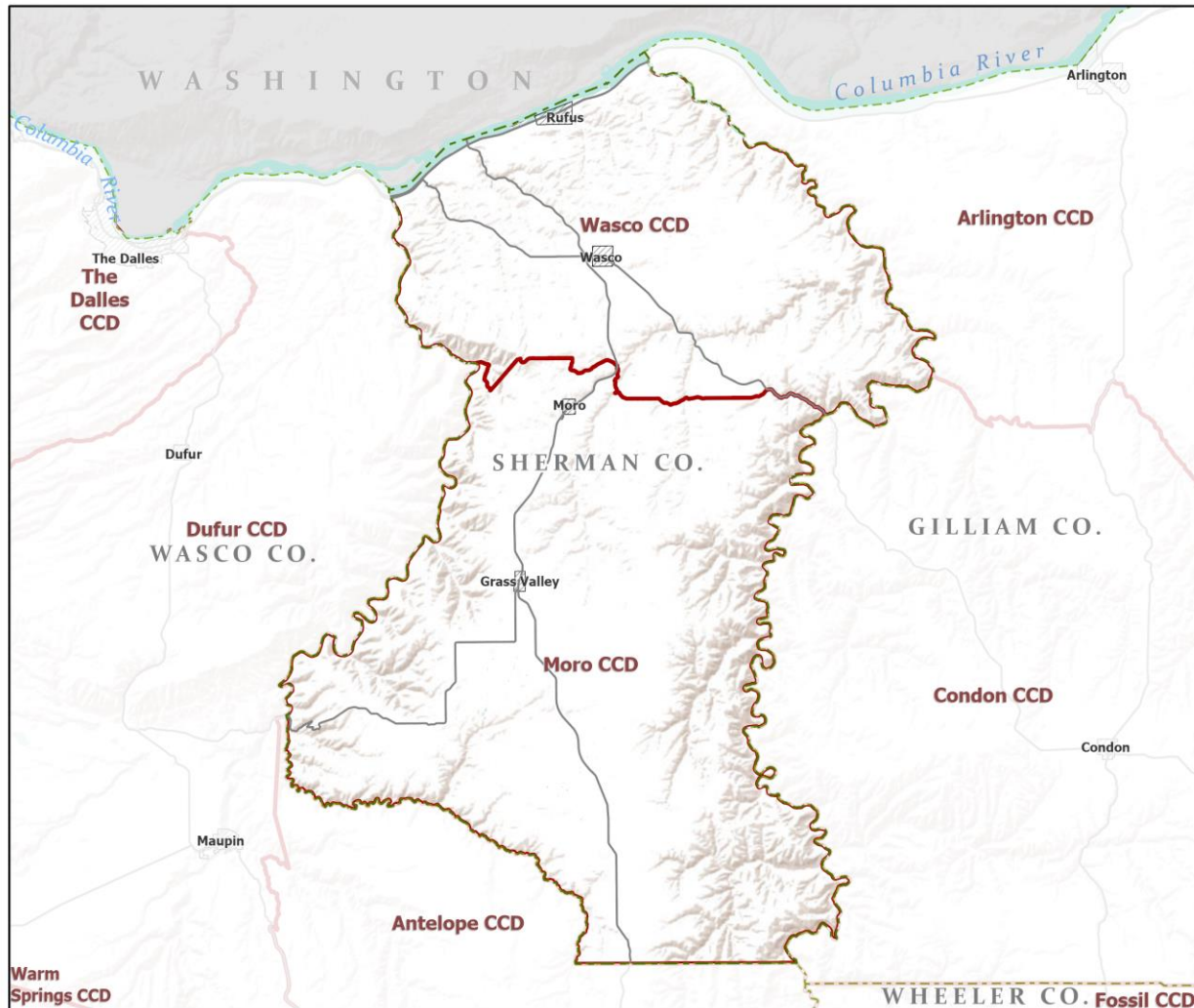


**Jobs Counts by Counties Where Workers are Employed - All Jobs**

	2018	
	Count	Share
<u>All Counties</u>	682	100.0%
<u>Sherman County, OR</u>	226	33.1%
<u>Wasco County, OR</u>	99	14.5%
<u>Multnomah County, OR</u>	57	8.4%
<u>Benton County, WA</u>	24	3.5%
<u>Yakima County, WA</u>	24	3.5%
<u>Marion County, OR</u>	23	3.4%
<u>Klickitat County, WA</u>	23	3.4%
<u>Clackamas County, OR</u>	19	2.8%
<u>Deschutes County, OR</u>	19	2.8%
<u>Washington County, OR</u>	18	2.6%
<u>All Other Locations</u>	150	22.0%



# County Subdivisions (CCDs): Sherman County



- Counties
- Incorporated Cities
- Highways
- County Subdivisions (CCDs)



Portland State University,  
Population Research Center,  
May 2021.  
[www.pdx.edu/prc](http://www.pdx.edu/prc)

Sources: Esri, USGS, NOAA  
State of Oregon GEO;  
Oregon Dept. of  
Transportation.

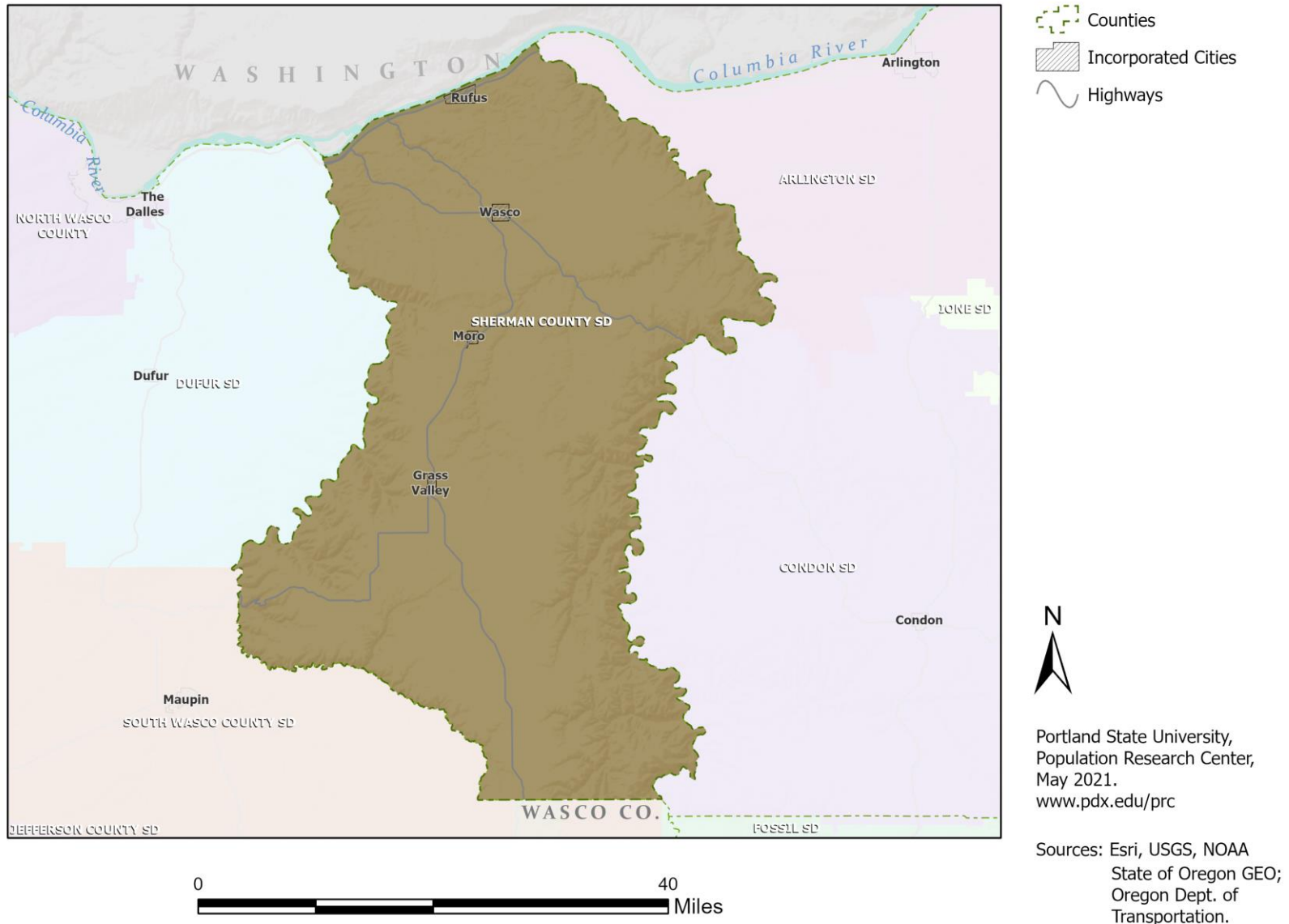
# Sherman County Employment by Sector by Census County Division

Sector	Oregon	County Total	Moro CCD	Wasco CCD
Total, All Jobs*	1,904,601	681	323	358
Goods-Producing	18.6%	16.7%	11.1%	21.8%
Natural Resources and Mining	2.7%	3.4%	1.5%	5.0%
Construction	5.9%	12.8%	9.6%	15.6%
Manufacturing	10.0%	0.6%	0.0%	1.1%
Service Providing	81.4%	83.3%	88.9%	78.2%
Trade, Transportation, and Utilities	18.6%	31.0%	31.6%	30.4%
Information	2.0%	1.2%	2.5%	0.0%
Financial Activities	4.6%	0.9%	1.9%	0.0%
Professional and Business Services	13.4%	4.7%	7.7%	2.0%
Education and Health Services	23.1%	12.6%	25.7%	0.8%
Leisure and Hospitality	11.4%	21.4%	1.9%	39.1%
Other Services	4.2%	2.1%	2.5%	1.7%
Public Administration	4.2%	9.4%	15.2%	4.2%

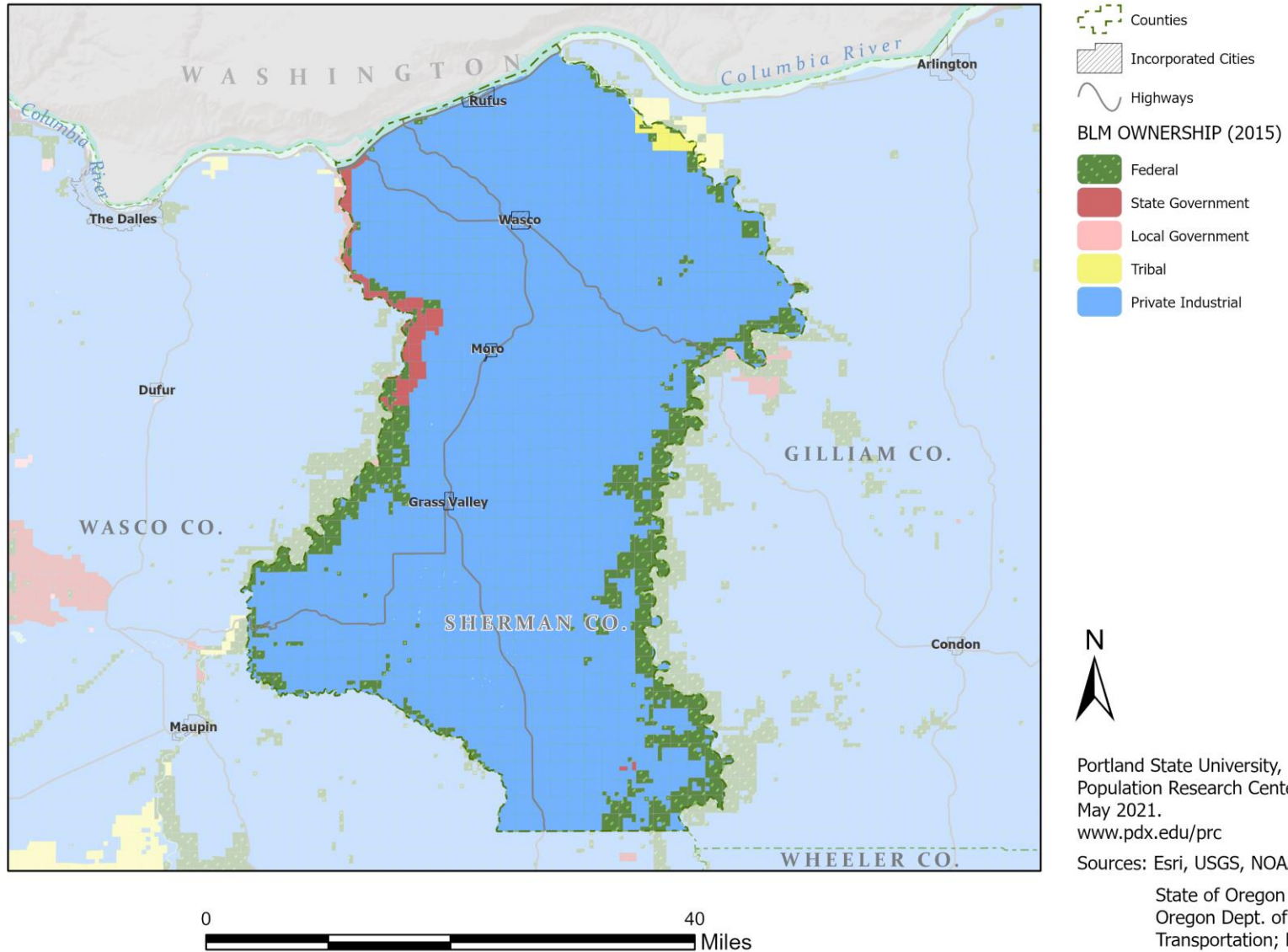
Source: U.S. Census Bureau, LEHD Origin-Destination Employment Statistics, 2018 Q2

\* Jobs covered by unemployment insurance and federal workers.

# School Districts: Sherman County

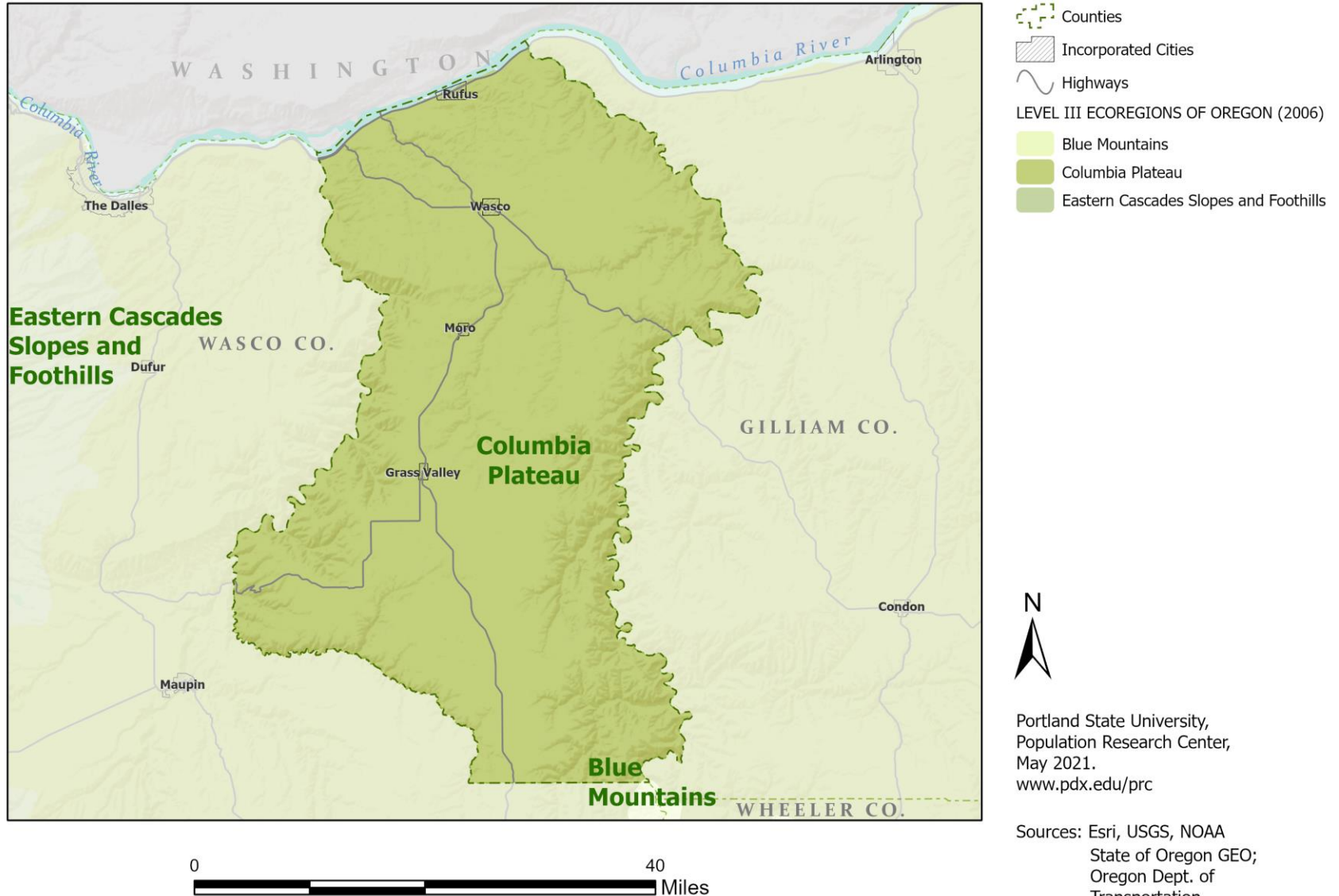


# Land Ownership: Sherman County





# Ecoregions: Sherman County



# Land Cover: Sherman County

