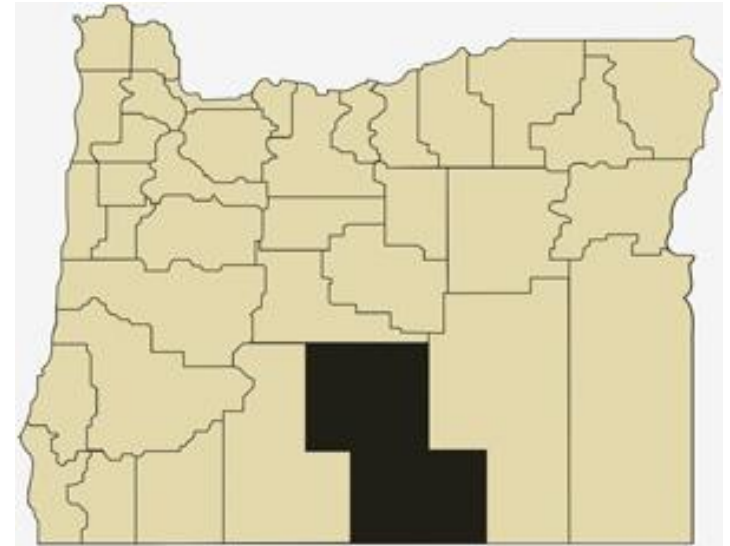


Lake County Overview

House and Senate Committees on Redistricting

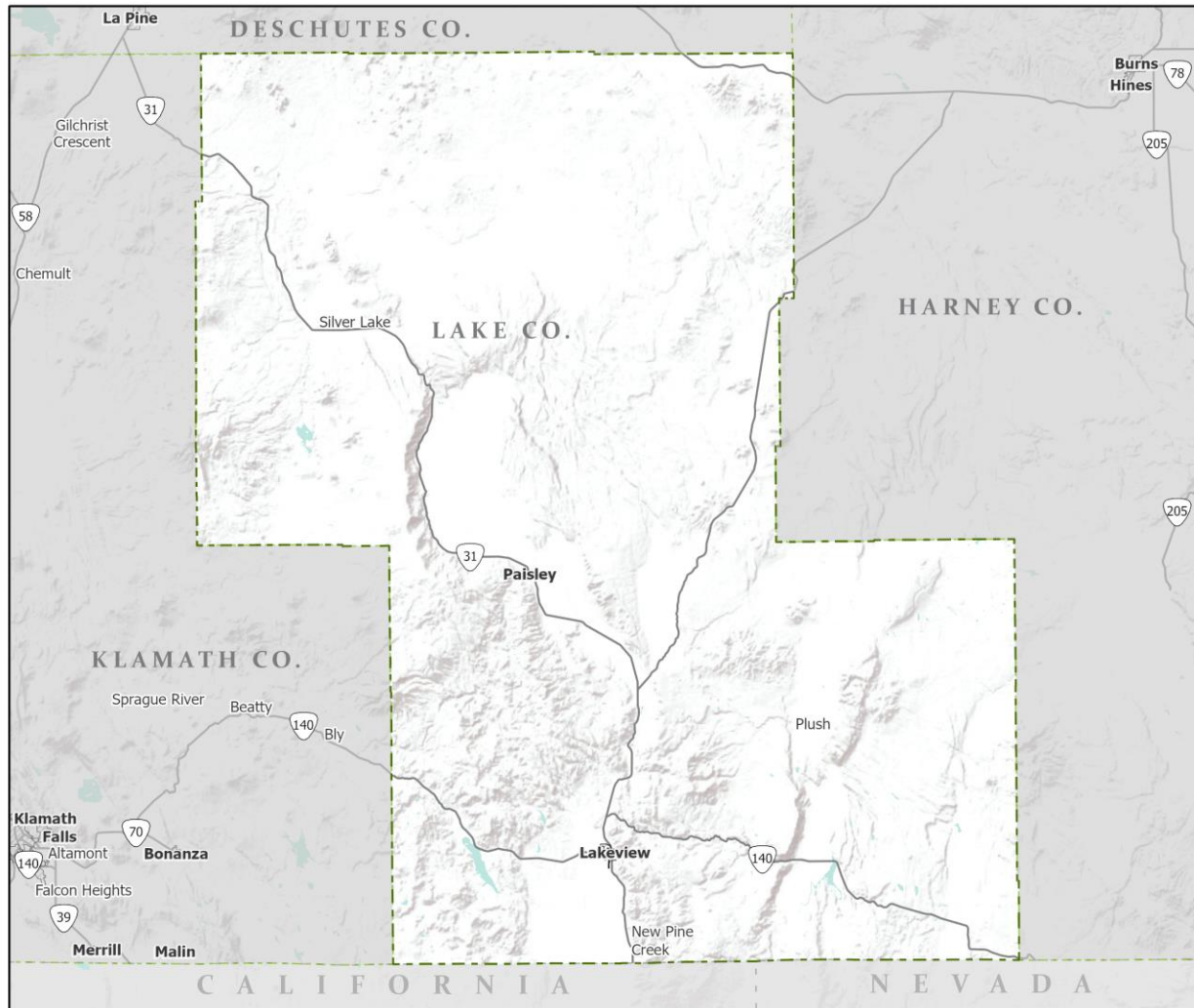
June 8, 2021

July 1, 2020 population estimate	8,075
Population rank	30th
Share of state population	0.2%
Density (per square mile)	1.0
Density rank	34th
Area (square miles)	8,359
Area rank	3rd
Share of state area	8.6%



Sources: PSU Population Research Center; Oregon Blue Book.

Highways: Lake County



- Counties
- Incorporated Cities
- Highways

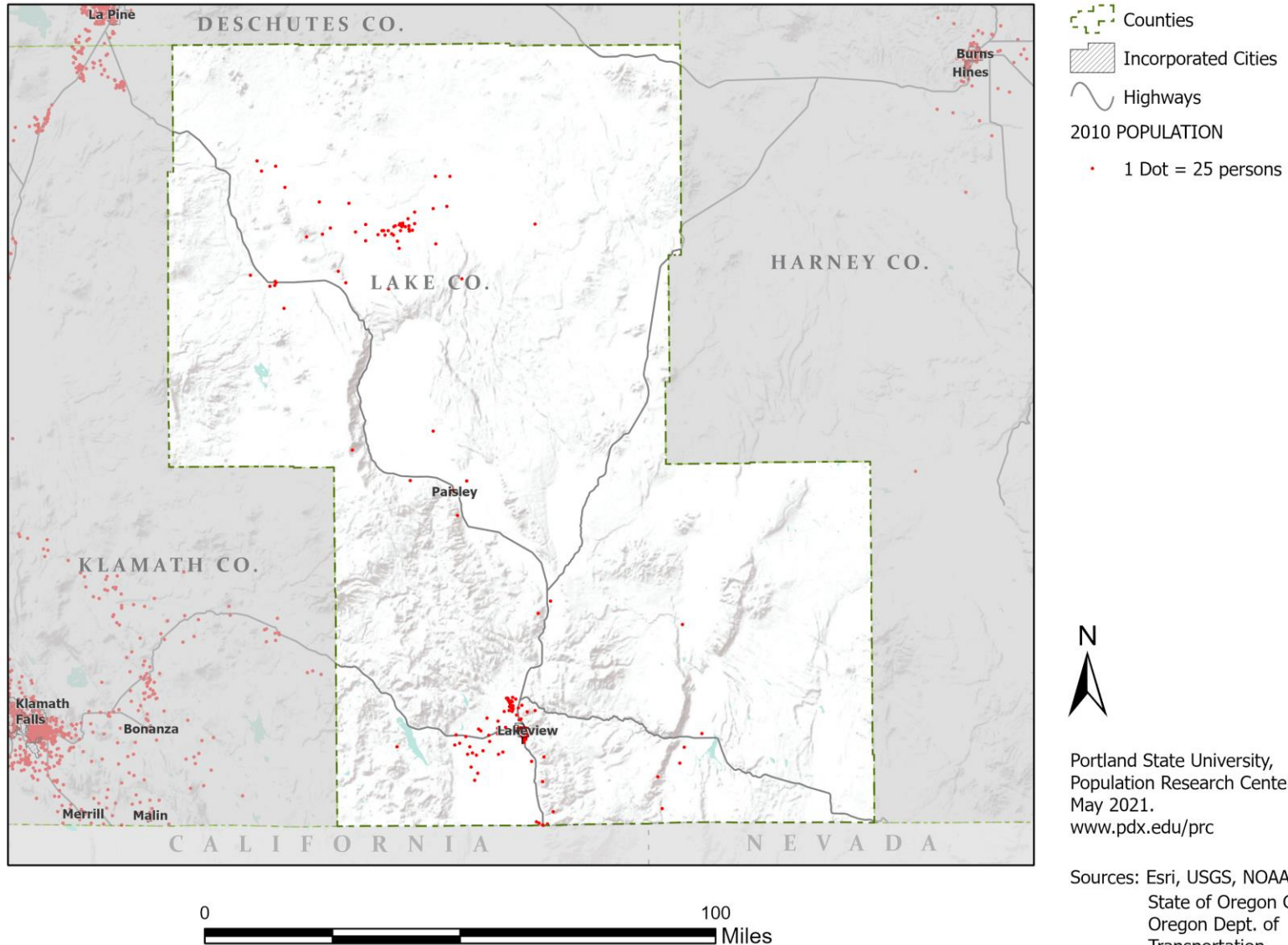


Portland State University,
Population Research Center,
May 2021.
www.pdx.edu/prc

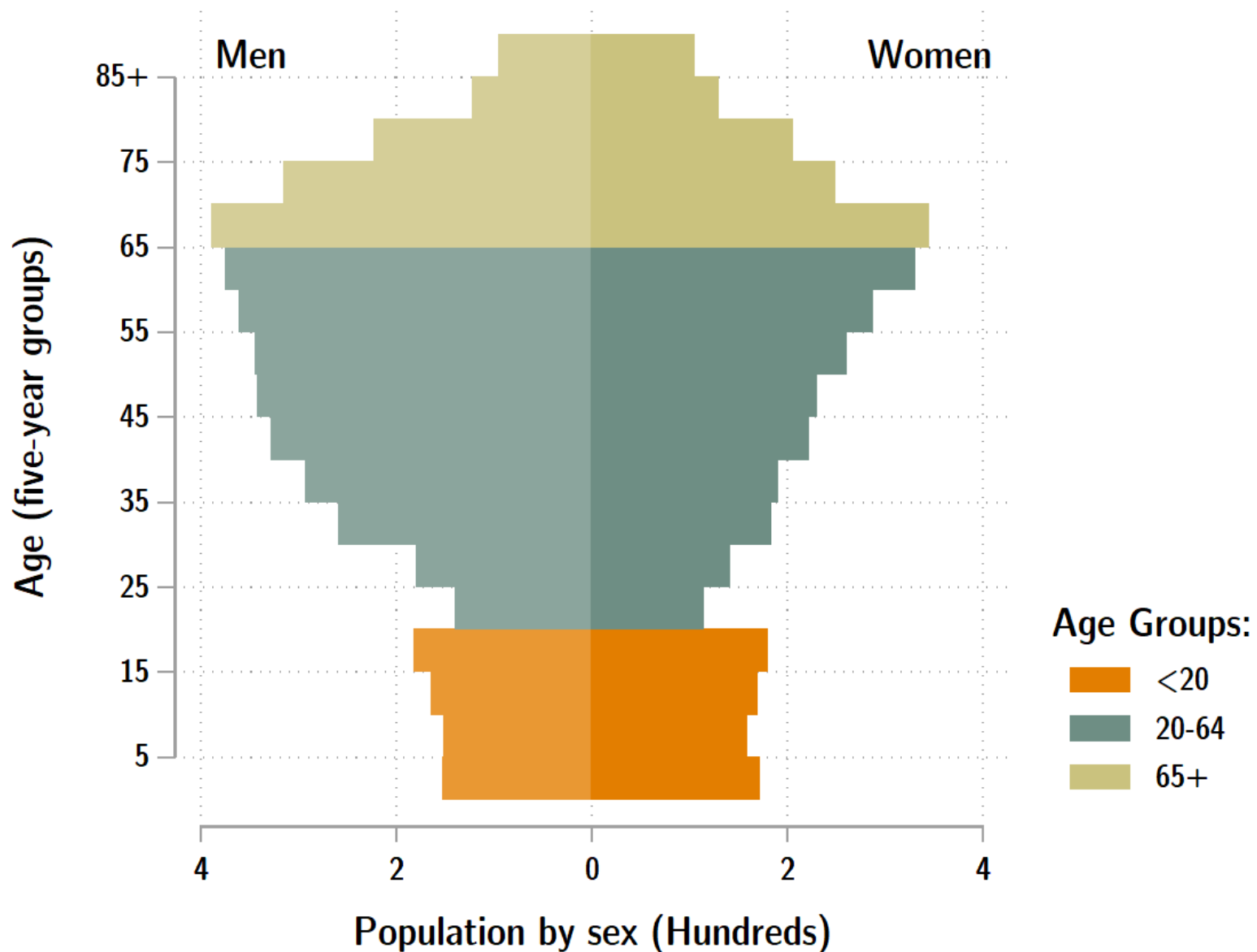
Sources: Esri, USGS, NOAA
State of Oregon GEO;
Oregon Dept. of
Transportation.

0 100 Miles

Population: Lake County



Lake population by age & sex: 2020



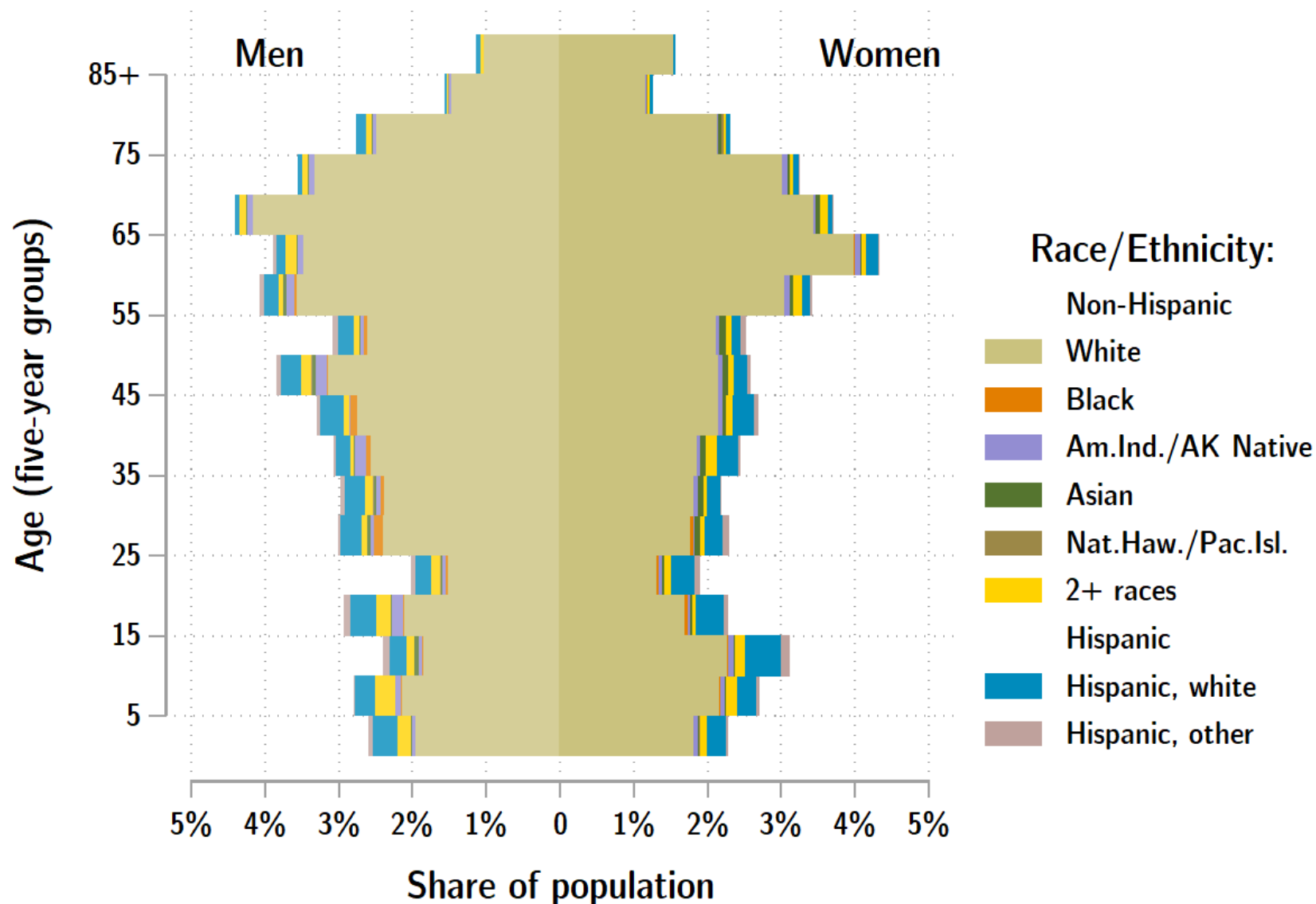
Source: Estimates by Population Research Center, PSU

Age Distribution, Lake County

Age Group	2020 Estimate	2020 Percent of Total	Oregon 2020 Percent of Total
Total population	8,075	100.0%	100.0%
Under age 5	323	4.0%	5.4%
Age 5 to 17	898	11.1%	14.9%
Age 18 to 64	4,679	57.9%	61.1%
Age 65 and over	2,175	26.9%	18.6%

Source: PSU Population Research Center July 1, 2020 Population Estimates

Lake County population by age & sex: 2019



Source: Estimates by US Census Bureau

Race and Ethnicity, Lake County

HISPANIC OR LATINO AND RACE	2010 Census	2010 Census Percent	2015-19 ACS Estimate	2015-19 ACS Percent	Oregon 2015-19 ACS Percent
Total population	7,895	100.0%	7,837	100.0%	100.0%
Hispanic or Latino	545	6.9%	640	8.2%*	13.0%
Not Hispanic or Latino	7,350	93.1%	7,197	91.8%*	87.0%
White alone	6,875	87.1%	6,618	84.4%*	75.7%
Black or African American alone	37	0.5%	27	0.3%	1.8%
American Indian and Alaska Native alone	149	1.9%	189	2.4%	0.9%
Asian alone	44	0.6%	77	1.0%*	4.3%
Native Hawaiian and Other Pacific Islander alone	5	0.1%	0	0.0%	0.4%
Some Other Race alone	7	0.1%	6	0.1%	0.1%
Two or More Races	233	3.0%	280	3.6%	3.7%

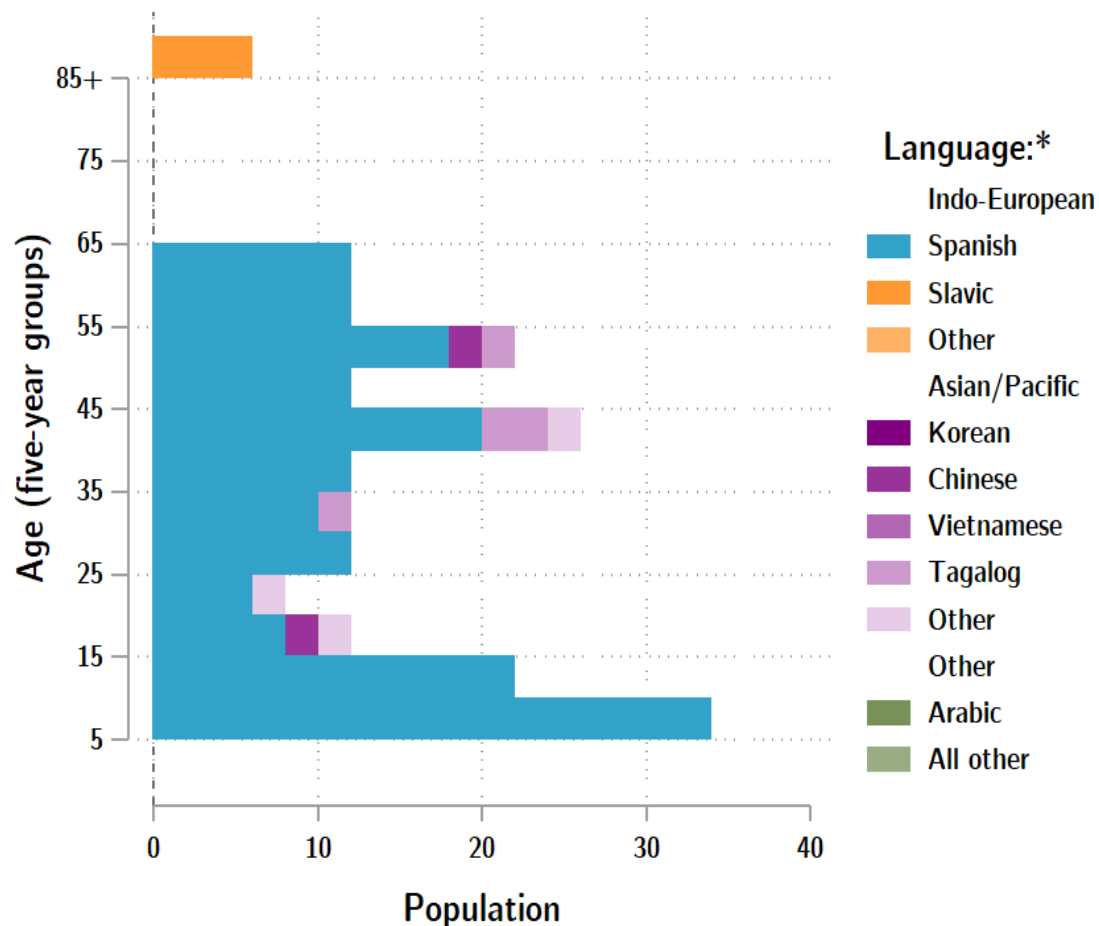
RACE ALONE OR IN COMBINATION WITH ONE OR MORE OTHER RACES**	2010 Census	2010 Census Percent	2015-19 ACS Estimate	2015-19 ACS Percent	Oregon 2015-19 ACS Percent
White	7,374	93.4%	7,469	95.3%*	88.8%
Black or African American	47	0.6%	63	0.8%	2.9%
American Indian and Alaska Native	351	4.4%	367	4.7%	3.1%
Asian	93	1.2%	137	1.7%*	6.0%
Native Hawaiian and Other Pacific Islander	35	0.4%	17	0.2%	0.8%
Some Other Race	269	3.4%	80	1.0%*	3.6%

Source: U.S. Census Bureau, 2010 Census and 2019 5-year American Community Survey estimates.

* Difference between 2010 Census and 2015-19 ACS is statistically significant at the 90% confidence level.

** Total may add to more than 100% due to persons identifying as more than one race.

Lake County population by age & language: 2019



Language Spoken at Home Speak English less than "very well" Lake County

Languages	Estimate
Total Population Age 5 and Older	7,460
Speaking English less than "very well"	218
Spanish	176
Russian, Polish, or other Slavic languages	5
Other Indo-European languages	0
Korean	0
Chinese (incl. Cantonese and Mandarin)	4
Vietnamese	0
Tagalog (incl. Filipino)	9
Other Asian and Pacific Island languages	7
Arabic	0
Other languages	17

Source: U.S. Census Bureau American Community Survey 2019 5-year estimates, Table C16001.

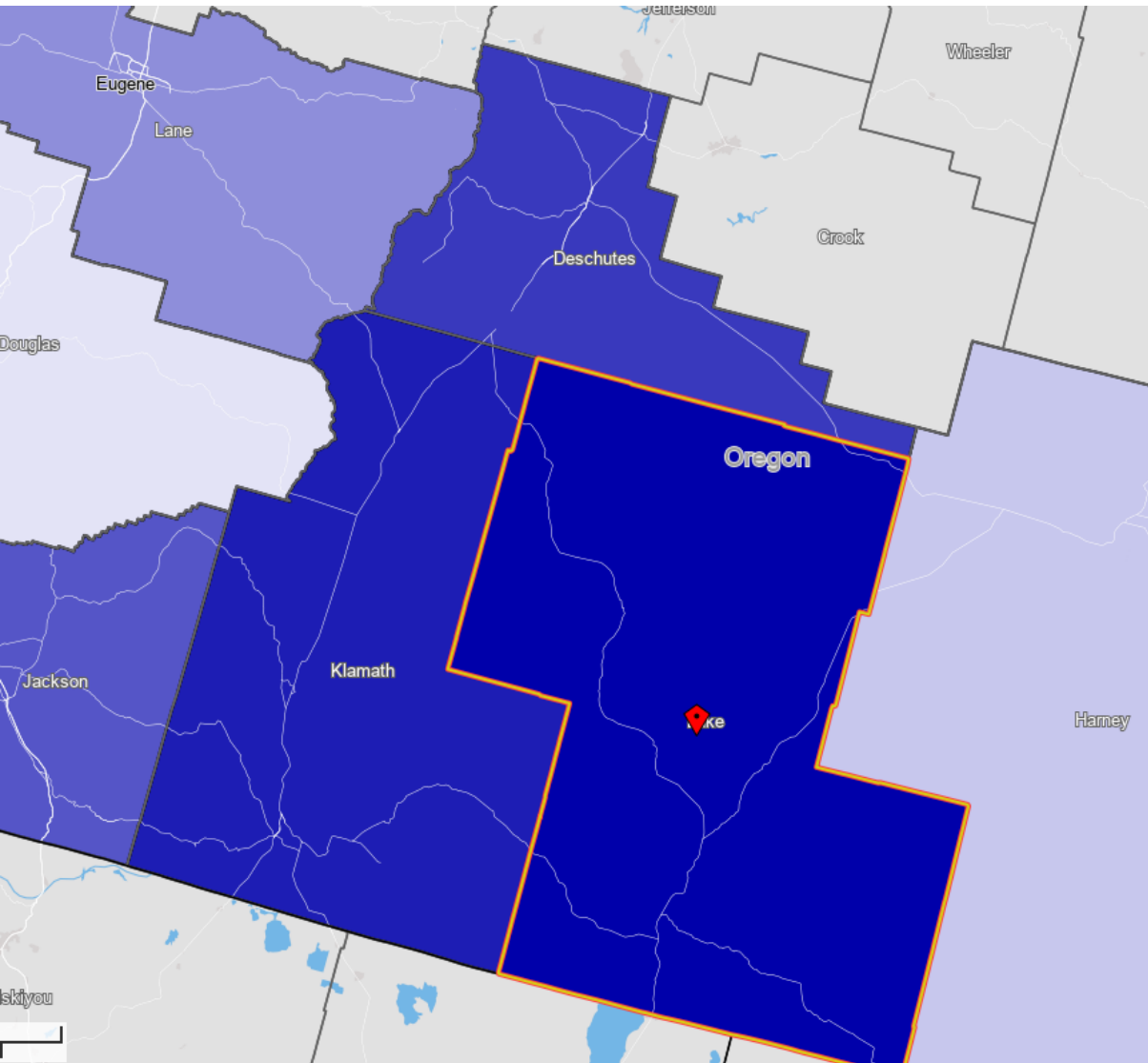
Note: * Languages for persons who speak English less than very well.

Source: ACS tables B16004, C16001, PUMS; PEP estimates; Analysis by PRC, PSU

[Link to Table C16001](#) for all counties, including margins of error.

[Visualization](#) of language data by census tract within county.

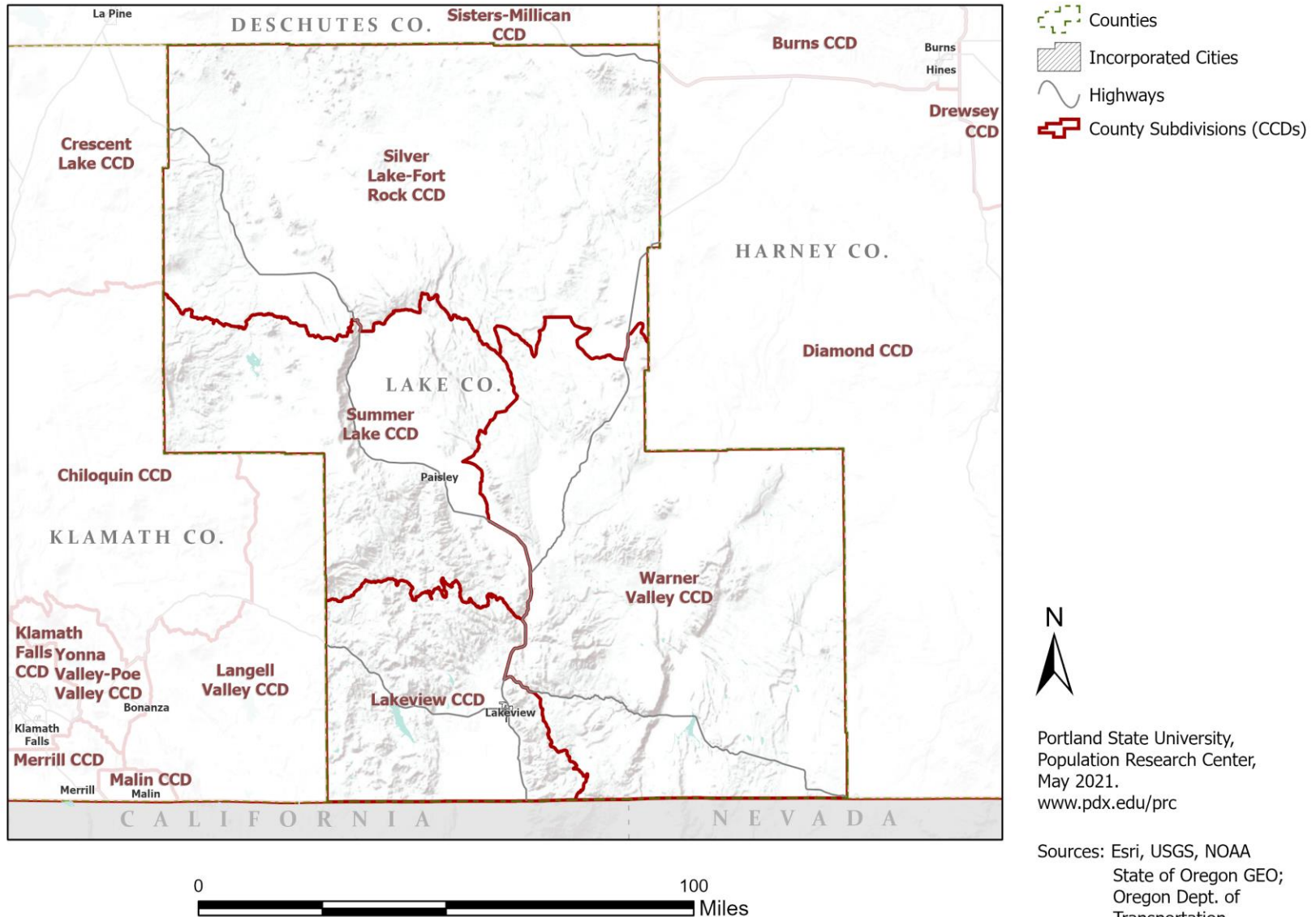
Lake County Commute Flows



Jobs Counts by Counties Where Workers are Employed - All Jobs

2018		
	Count	Share
All Counties	2,761	100.0%
Lake County, OR	1,822	66.0%
Klamath County, OR	138	5.0%
Deschutes County, OR	137	5.0%
Jackson County, OR	92	3.3%
Marion County, OR	52	1.9%
Lane County, OR	47	1.7%
Ada County, ID	45	1.6%
Multnomah County, OR	45	1.6%
Harney County, OR	35	1.3%
Douglas County, OR	21	0.8%
All Other Locations	327	11.8%

County Subdivisions (CCDs): Lake County



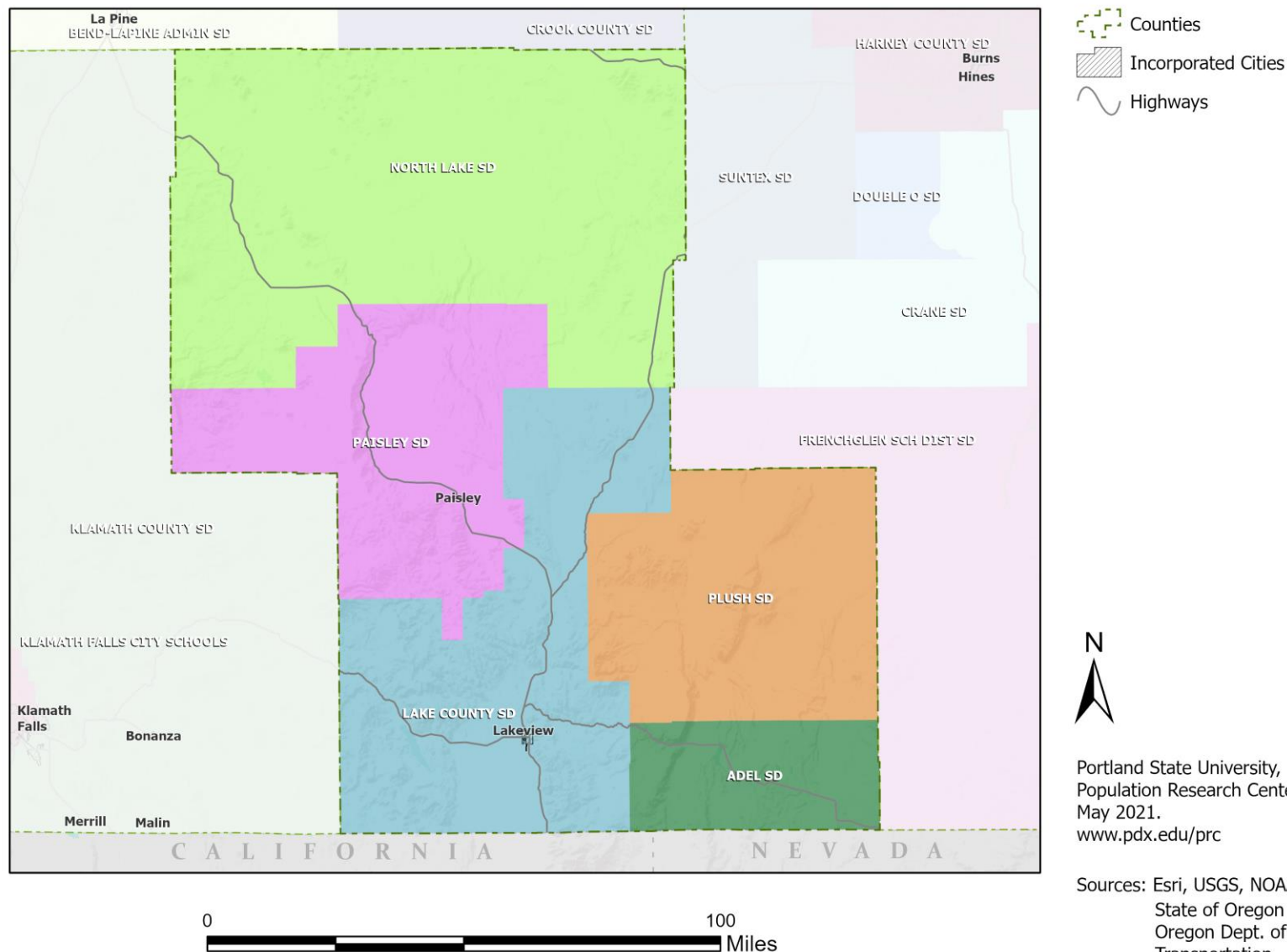
Lake County Employment by Sector by Census County Division

Sector	Oregon	County Total	Lakeview CCD	Silver Lake-Fort Rock CCD	Summer Lake CCD	Warner Valley CCD
Total, All Jobs*	1,904,601	2,405	1,721	413	185	86
Goods-Producing	18.6%	30.3%	21.3%	50.8%	53.0%	61.6%
Natural Resources and Mining	2.7%	18.7%	7.1%	42.9%	53.0%	61.6%
Construction	5.9%	3.9%	4.4%	4.4%	0.0%	0.0%
Manufacturing	10.0%	7.7%	9.8%	3.6%	0.0%	0.0%
Service Providing	81.4%	69.7%	78.7%	49.2%	47.0%	38.4%
Trade, Transportation, and Utilities	18.6%	14.6%	14.8%	15.0%	8.1%	20.9%
Information	2.0%	1.3%	1.6%	1.0%	0.0%	0.0%
Financial Activities	4.6%	1.3%	1.9%	0.0%	0.0%	0.0%
Professional and Business Services	13.4%	3.3%	4.2%	1.9%	0.0%	0.0%
Education and Health Services	23.1%	23.7%	26.0%	17.4%	20.5%	16.3%
Leisure and Hospitality	11.4%	7.6%	6.6%	10.2%	14.1%	1.2%
Other Services	4.2%	2.7%	3.3%	2.2%	0.0%	0.0%
Public Administration	4.2%	15.1%	20.3%	1.5%	4.3%	0.0%

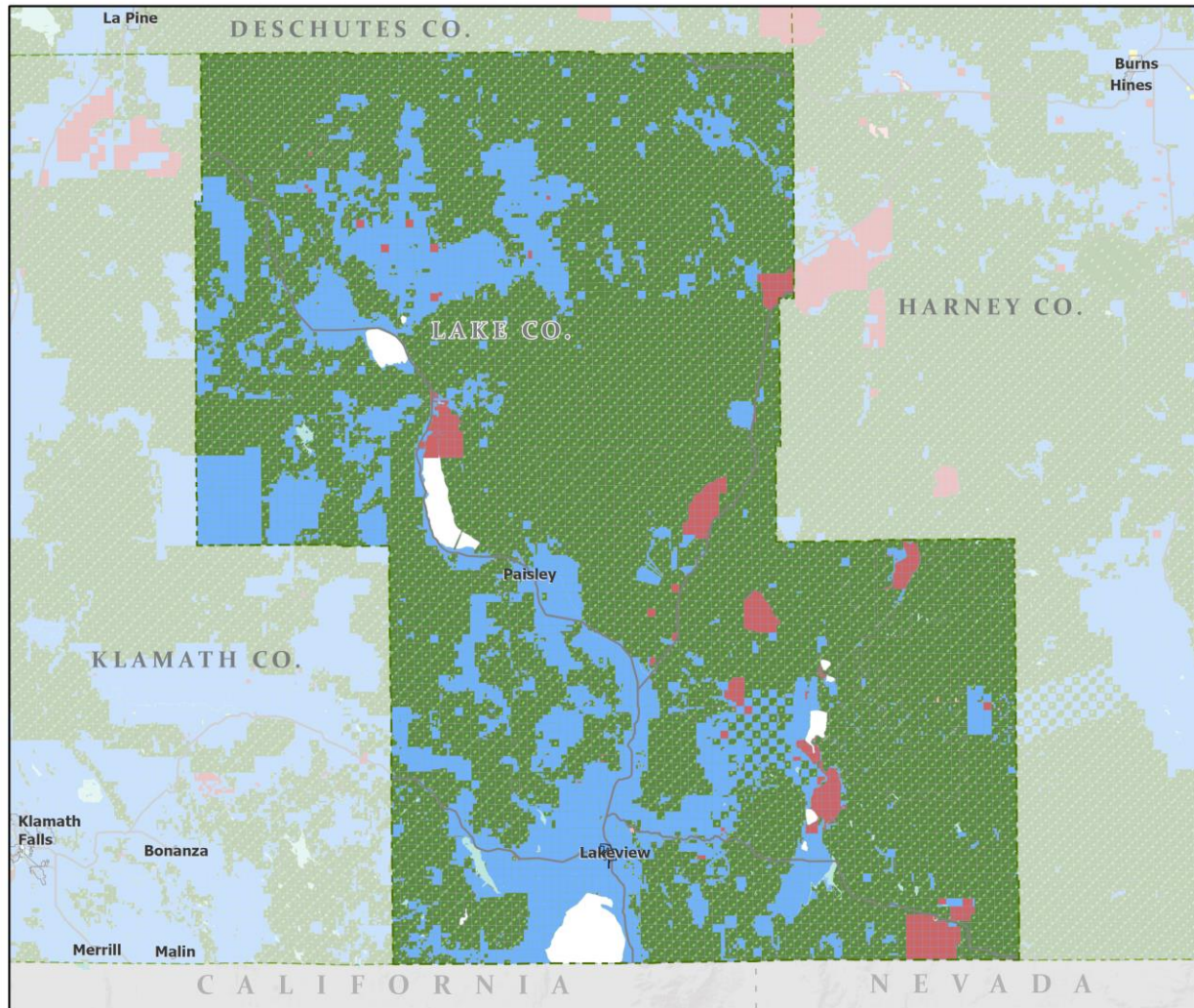
Source: U.S. Census Bureau, LEHD Origin-Destination Employment Statistics, 2018 Q2

* Jobs covered by unemployment insurance and federal workers.

School Districts: Lake County



Land Ownership: Lake County



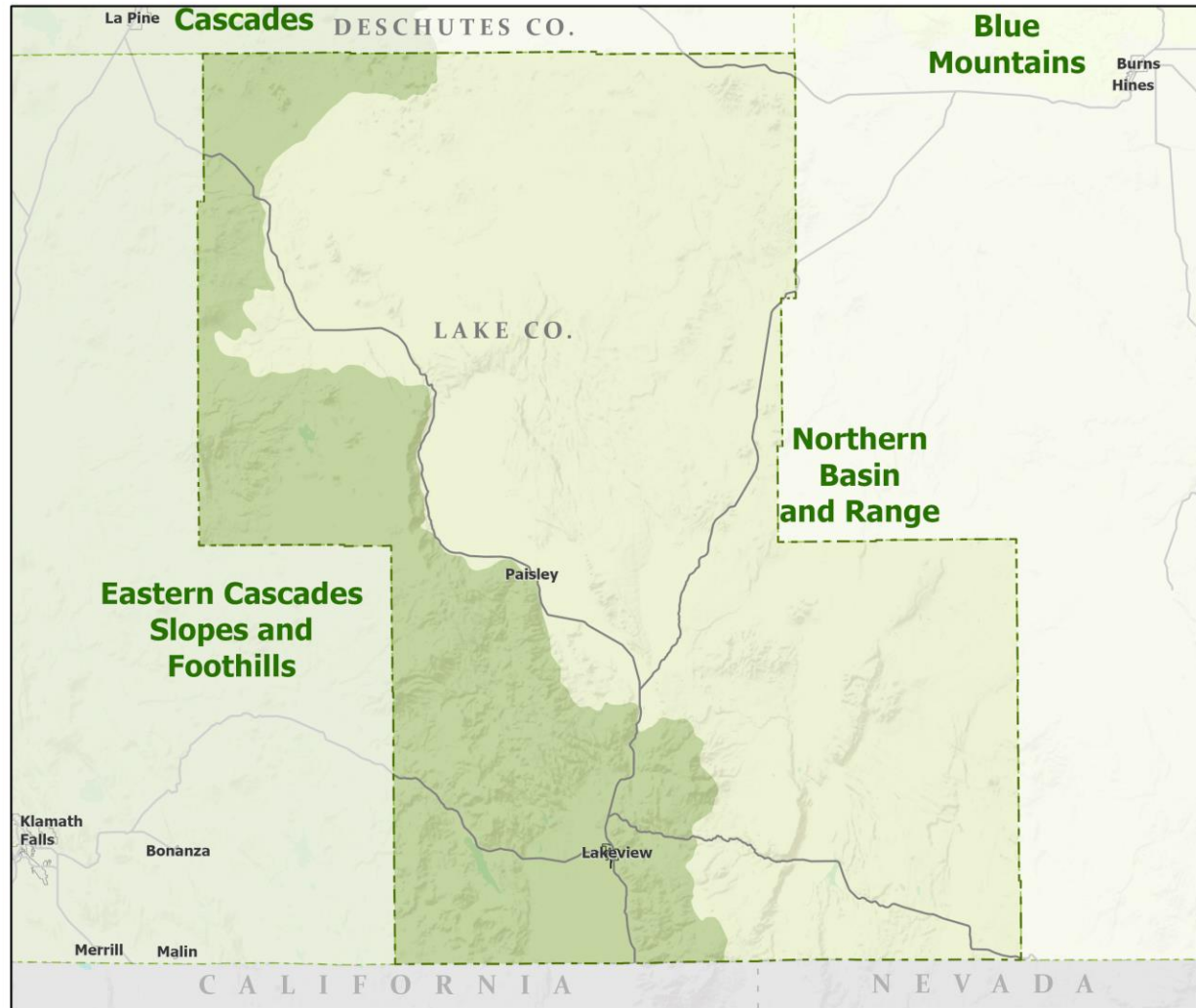
Portland State University,
Population Research Center,
May 2021.
www.pdx.edu/prc

Sources: Esri, USGS, NOAA

State of Oregon GEO;
Oregon Dept. of
Transportation; Bureau of
Land management.



Ecoregions: Lake County



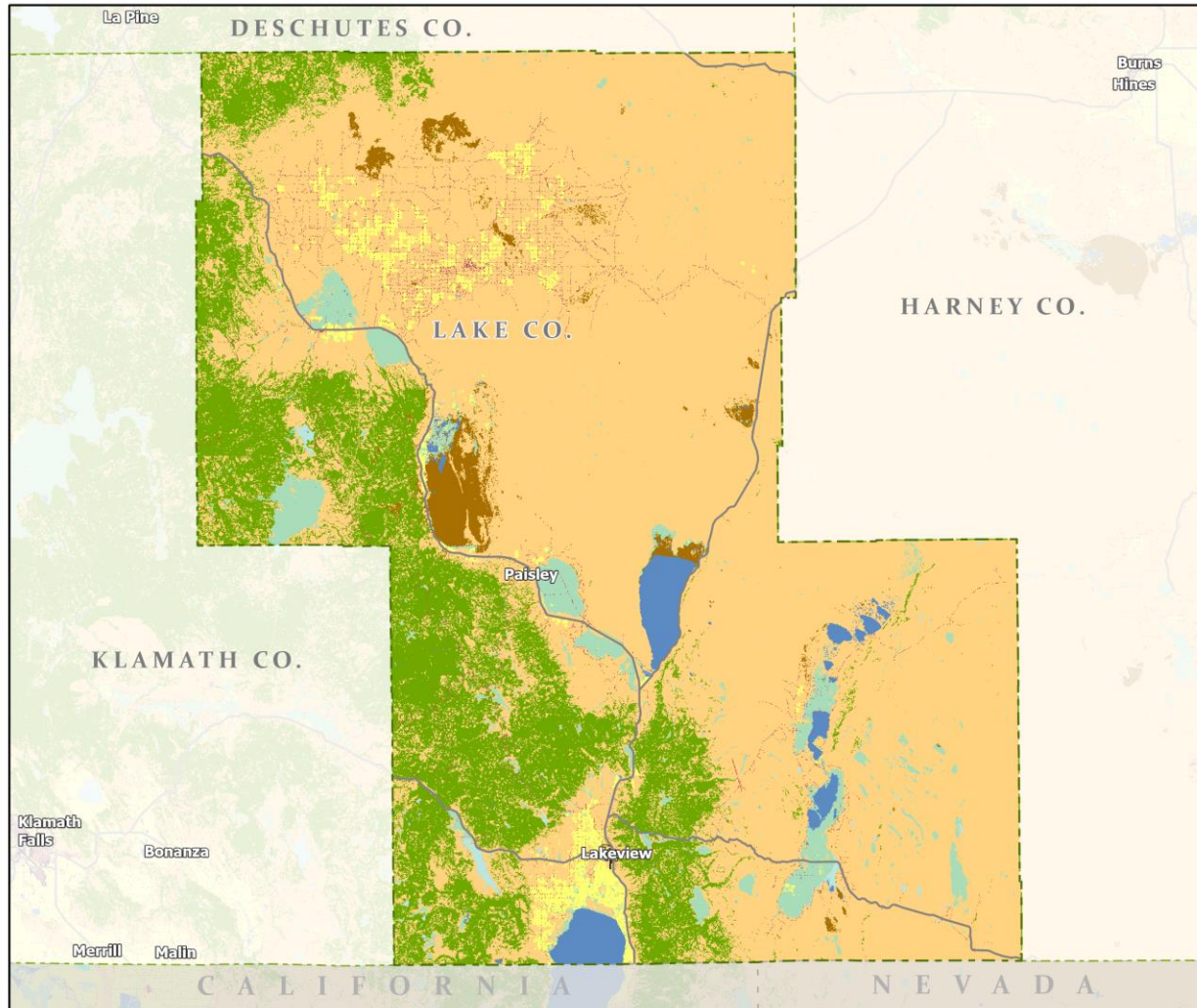
- Counties
- Incorporated Cities
- Highways
- LEVEL III ECOREGIONS OF OREGON (2006)
 - Blue Mountains
 - Cascades
 - Eastern Cascades Slopes and Foothills
 - Northern Basin and Range



Portland State University,
Population Research Center,
May 2021.
www.pdx.edu/prc

Sources: Esri, USGS, NOAA
State of Oregon GEO;
Oregon Dept. of
Transportation.

Land Cover: Lake County



Portland State University,
Population Research Center,
May 2021.
www.pdx.edu/prc

Sources: Esri, USGS, NOAA
State of Oregon GEO;
Oregon Dept. of
Transportation.

