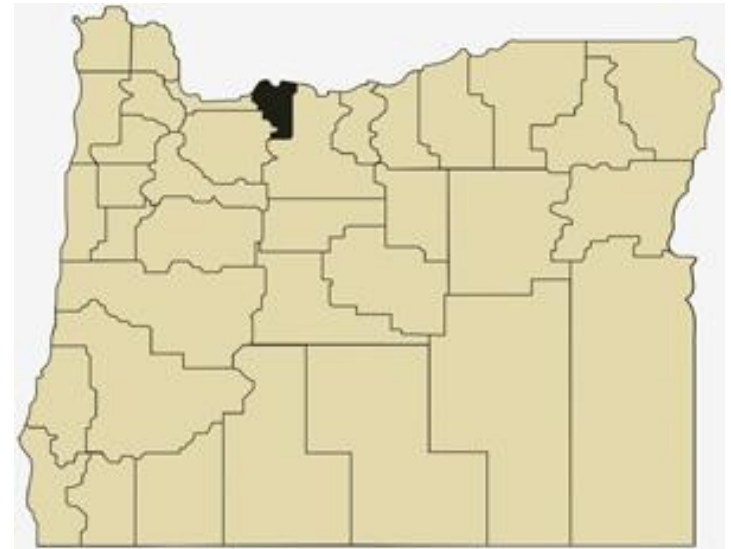


# Hood River County Overview

## House and Senate Committees on Redistricting

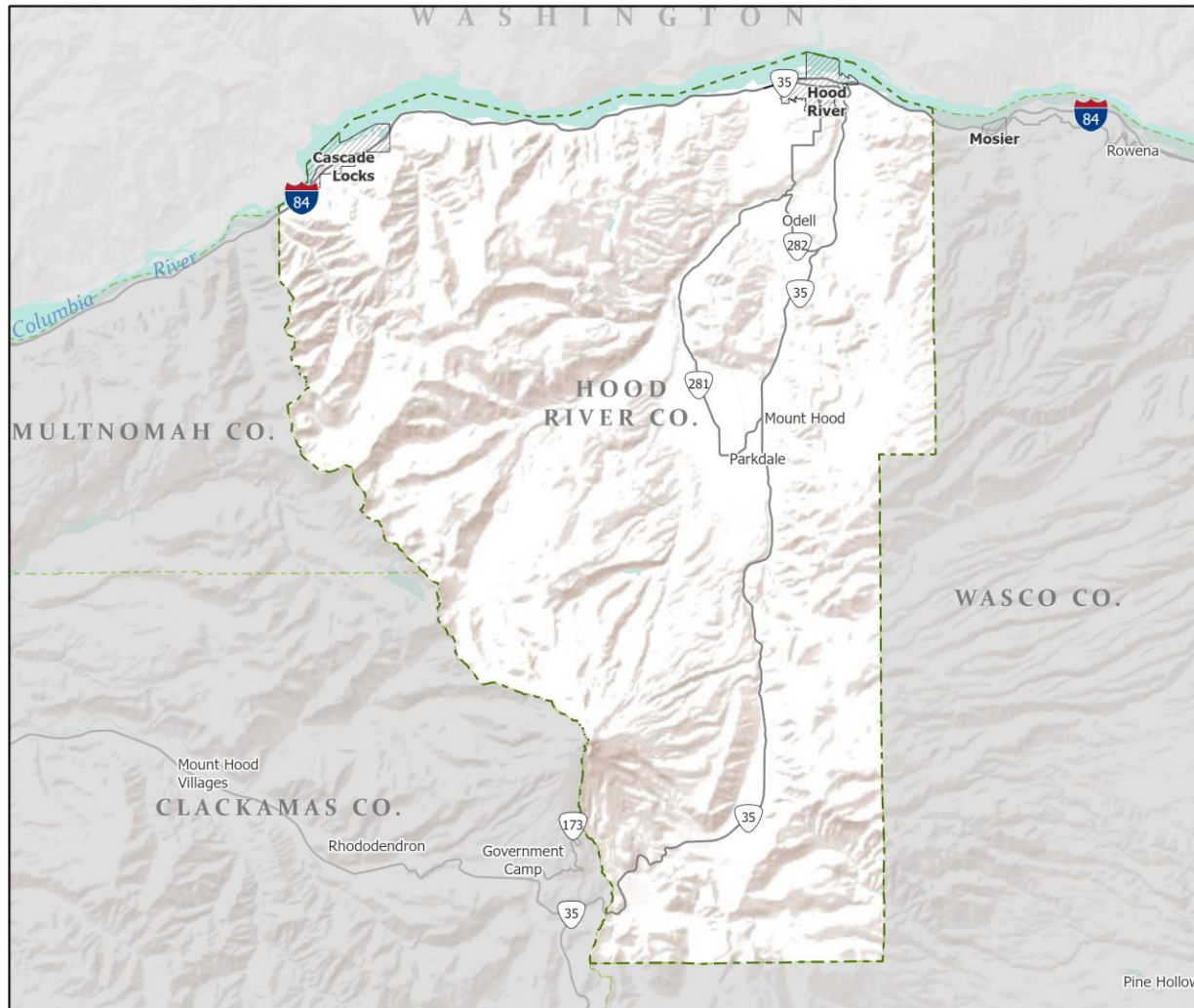
June 8, 2021

July 1, 2020 population estimate	25,640
Population rank	24th
Share of state population	0.6%
Density (per square mile)	48.1
Density rank	15th
Area (square miles)	533
Area rank	35th
Share of state area	0.5%



Sources: PSU Population Research Center; Oregon Blue Book.

# Highways: Hood River County



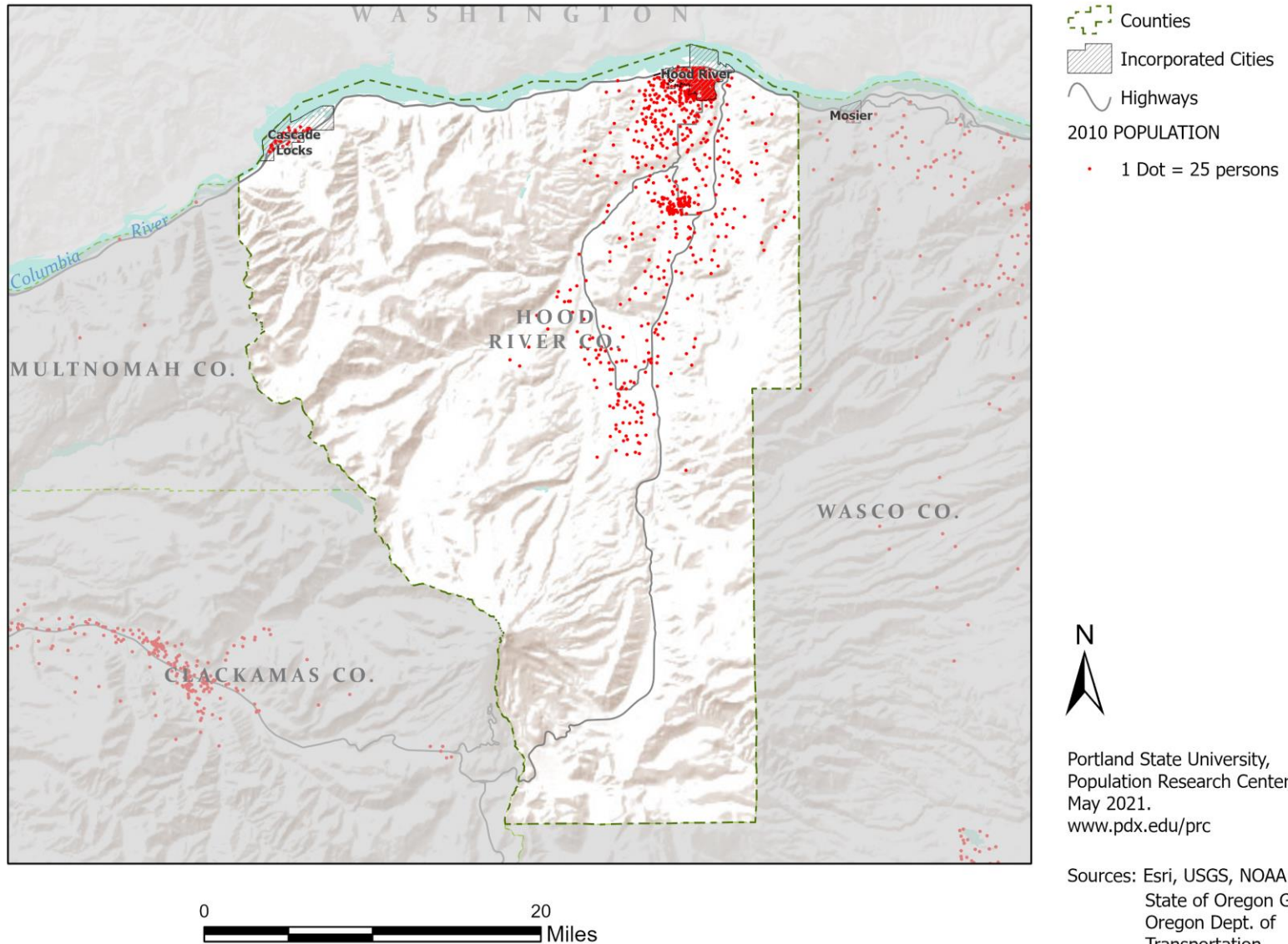
- Counties
- Incorporated Cities
- Highways



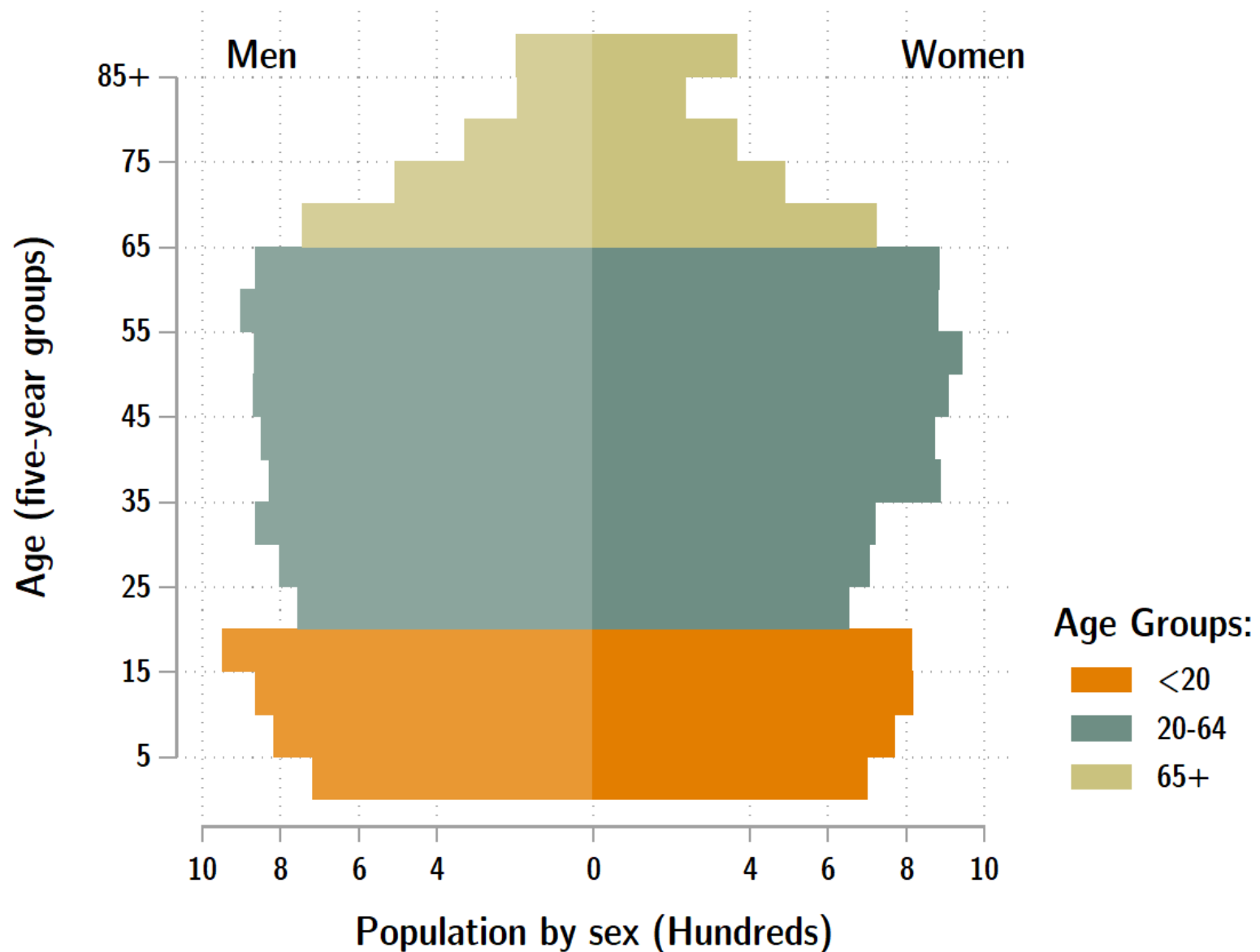
Portland State University,  
Population Research Center,  
May 2021.  
[www.pdx.edu/prc](http://www.pdx.edu/prc)

Sources: Esri, USGS, NOAA  
State of Oregon GEO;  
Oregon Dept. of  
Transportation.

# Population: Hood River County



## Hood\_River population by age & sex: 2020



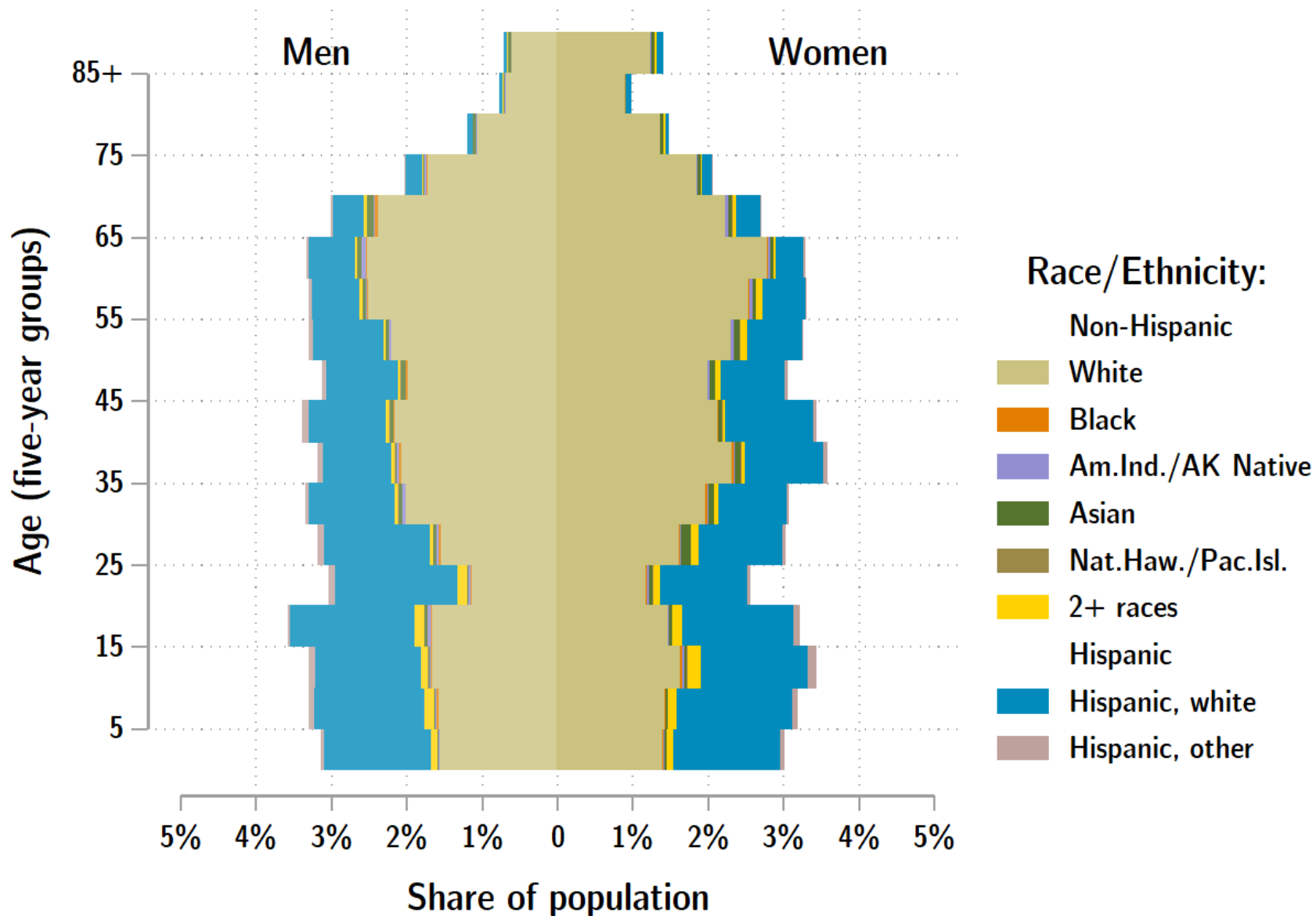
Source: Estimates by Population Research Center, PSU

# Age Distribution, Hood River County

Age Group	2020 Estimate	2020 Percent of Total	Oregon 2020 Percent of Total
Total population	25,640	100.0%	100.0%
Under age 5	1,417	5.5%	5.4%
Age 5 to 17	4,375	17.1%	14.9%
Age 18 to 64	15,698	61.2%	61.1%
Age 65 and over	4,150	16.2%	18.6%

Source: PSU Population Research Center July 1, 2020 Population Estimates

# Hood River County population by age & sex: 2019



Source: Estimates by US Census Bureau



# Race and Ethnicity, Hood River County

	2010 Census	2010 Census Percent	2015-19 ACS Estimate	2015-19 ACS Percent	Oregon 2015-19 ACS Percent
<b>HISPANIC OR LATINO AND RACE</b>					
Total population	22,346	100.0%	23,209	100.0%	100.0%
Hispanic or Latino	6,589	29.5%	7,293	31.4%*	13.0%
Not Hispanic or Latino	15,757	70.5%	15,916	68.6%*	87.0%
White alone	14,714	65.8%	14,790	63.7%*	75.7%
Black or African American alone	63	0.3%	136	0.6%*	1.8%
American Indian and Alaska Native alone	144	0.6%	131	0.6%	0.9%
Asian alone	305	1.4%	379	1.6%	4.3%
Native Hawaiian and Other Pacific Islander alone	30	0.1%	0	0.0%	0.4%
Some Other Race alone	25	0.1%	8	0.0%	0.1%
Two or More Races	476	2.1%	472	2.0%	3.7%

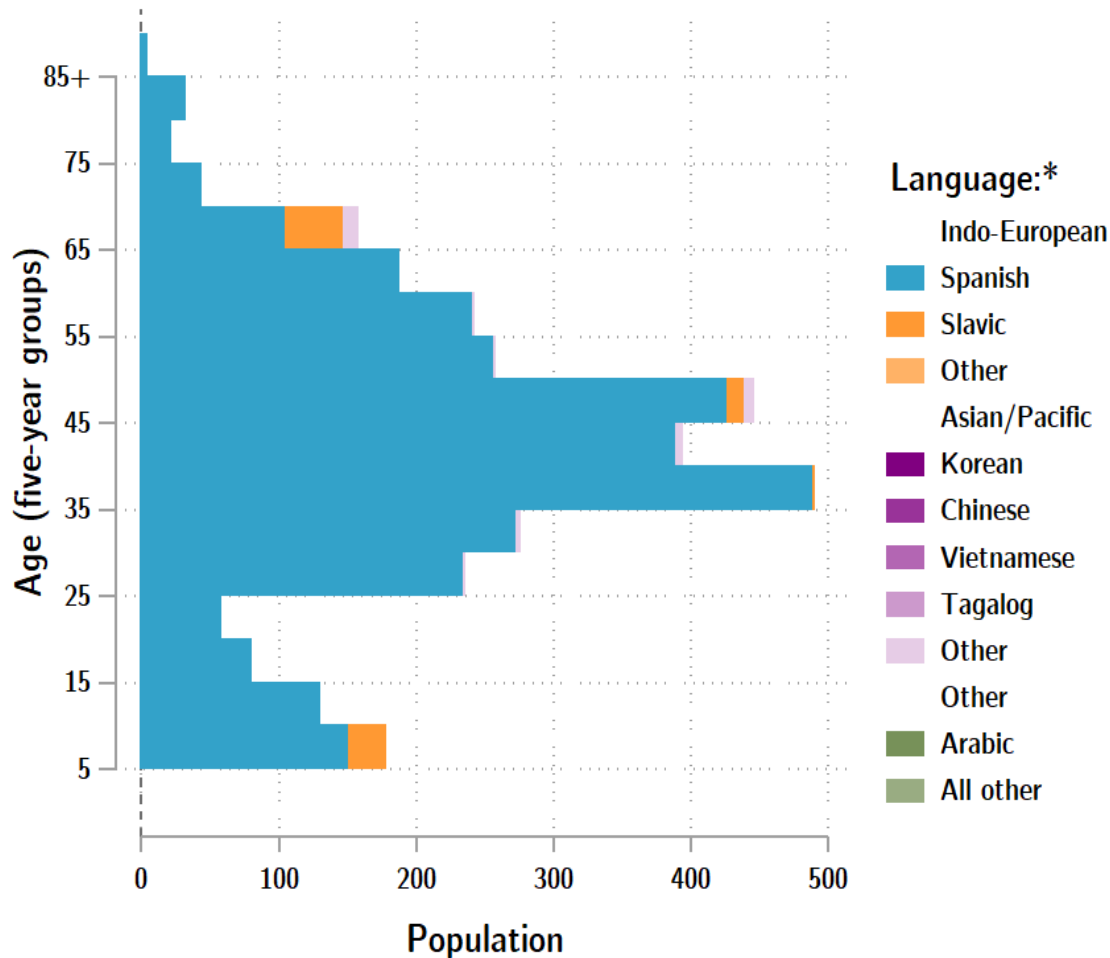
	2010 Census	2010 Census Percent	2015-19 ACS Estimate	2015-19 ACS Percent	Oregon 2015-19 ACS Percent
<b>RACE ALONE OR IN COMBINATION WITH ONE OR MORE OTHER RACES**</b>					
White	19,232	86.1%	21,497	92.6%*	88.8%
Black or African American	190	0.9%	209	0.9%	2.9%
American Indian and Alaska Native	398	1.8%	396	1.7%	3.1%
Asian	527	2.4%	633	2.7%*	6.0%
Native Hawaiian and Other Pacific Islander	116	0.5%	31	0.1%*	0.8%
Some Other Race	2,643	11.8%	1,345	5.8%*	3.6%

Source: U.S. Census Bureau, 2010 Census and 2019 5-year American Community Survey estimates.

\* Difference between 2010 Census and 2015-19 ACS is statistically significant at the 90% confidence level.

\*\* Total may add to more than 100% due to persons identifying as more than one race.

## Hood River County population by age & language: 2019



## Language Spoken at Home Speak English less than "very well" Hood River County

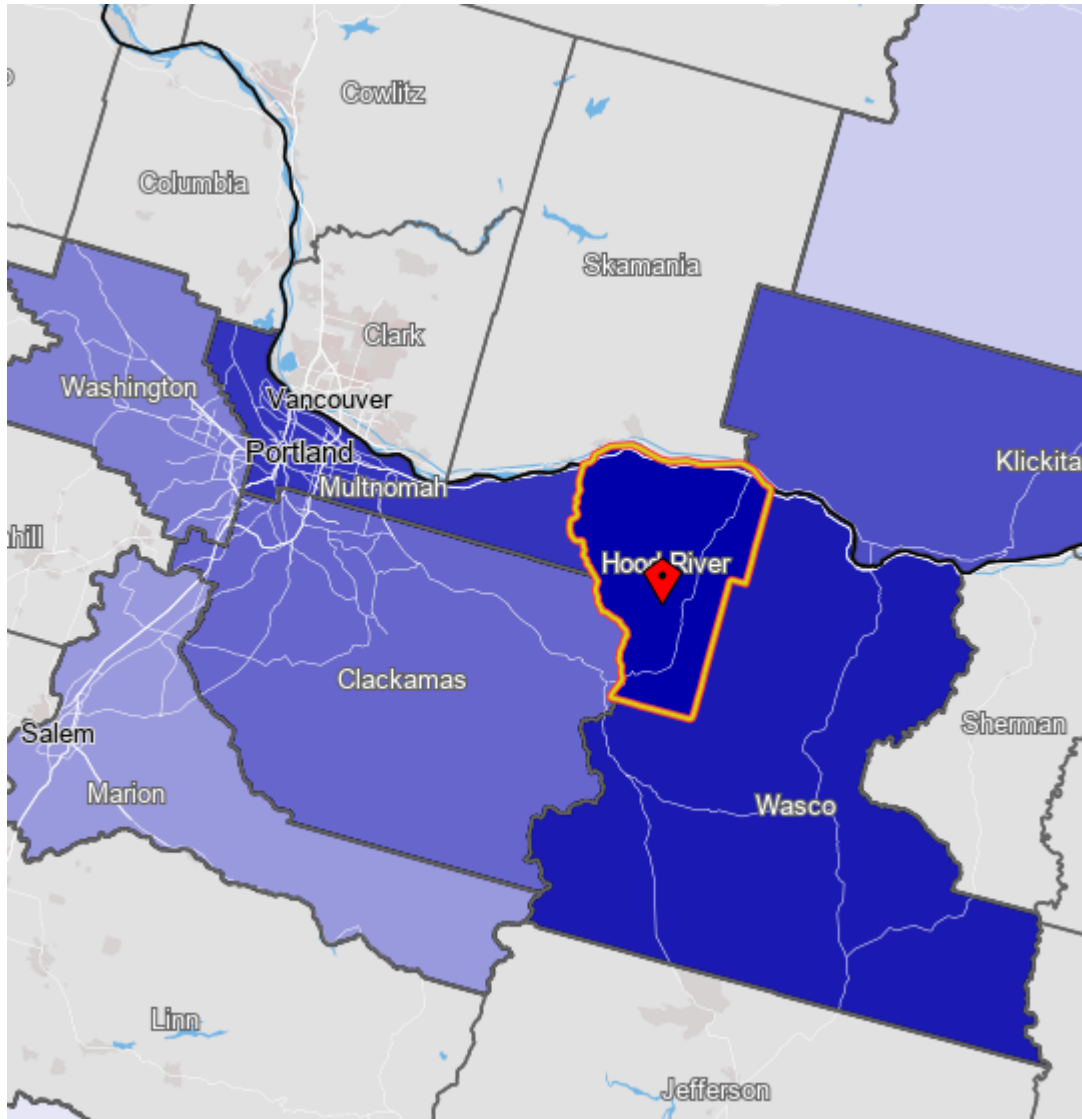
Languages	Estimate
Total Population Age 5 and Older	21,760
Speaking English less than "very well"	3,321
Spanish	3,115
Russian, Polish, or other Slavic languages	81
Other Indo-European languages	0
Korean	43
Chinese (incl. Cantonese and Mandarin)	0
Vietnamese	24
Tagalog (incl. Filipino)	0
Other Asian and Pacific Island languages	35
Arabic	0
Other languages	23

Source: U.S. Census Bureau American Community Survey 2019 5-year estimates, Table C16001.

Note: \* Languages for persons who speak English less than very well.  
Source: ACS tables B16004, C16001, PUMS; PEP estimates; Analysis by PRC, PSU



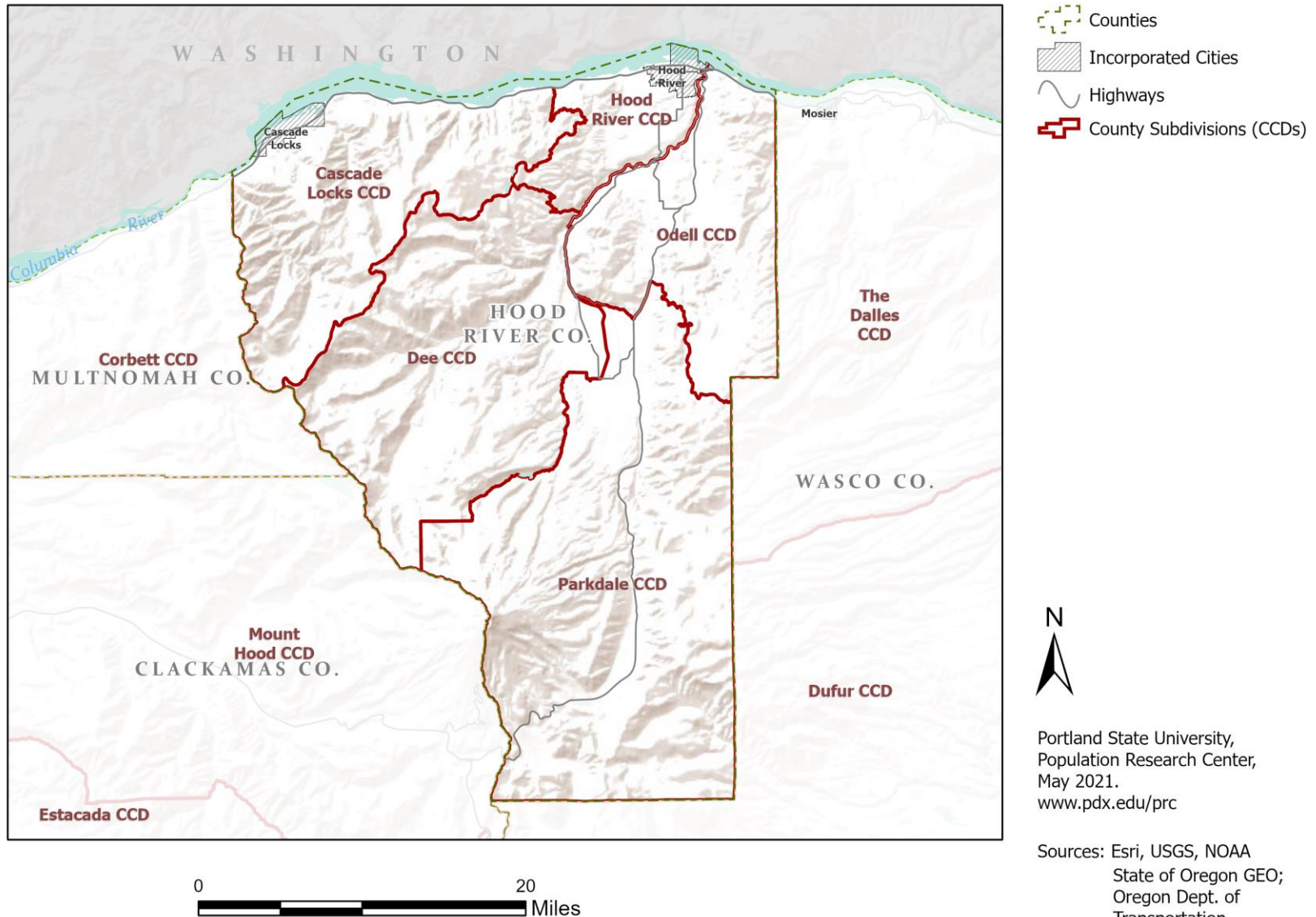
# Hood River County Commute Flows



**Jobs Counts by Counties Where Workers are Employed - All Jobs**

2018		
	Count	Share
<b>All Counties</b>	11,996	100.0%
<b>Hood River County, OR</b>	7,526	62.7%
<b>Wasco County, OR</b>	771	6.4%
<b>Multnomah County, OR</b>	765	6.4%
<b>Klickitat County, WA</b>	577	4.8%
<b>Clackamas County, OR</b>	362	3.0%
<b>Washington County, OR</b>	277	2.3%
<b>Marion County, OR</b>	255	2.1%
<b>Deschutes County, OR</b>	181	1.5%
<b>Yakima County, WA</b>	133	1.1%
<b>Lane County, OR</b>	126	1.1%
<b>All Other Locations</b>	1,023	8.5%

# County Subdivisions (CCDs): Hood River County



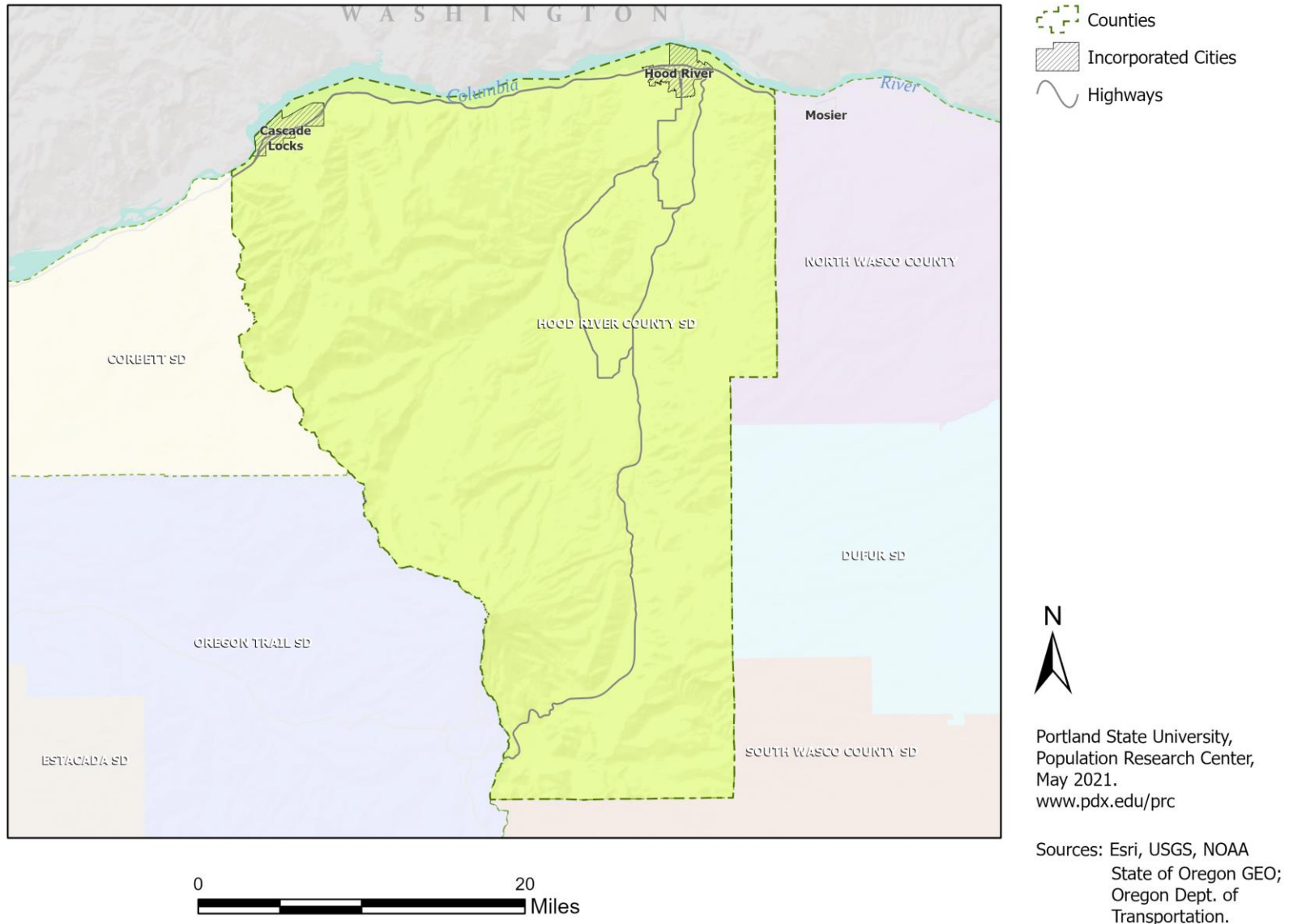
# Hood River County Employment by Sector by Census County Division

Sector	Oregon	County Total	Cascade Locks CCD	Dee CCD	Hood River CCD	Odell CCD	Parkdale CCD
Total, All Jobs*	1,904,601	13,409	343	281	8,595	2,907	1,283
Goods-Producing	18.6%	32.6%	33.2%	80.1%	19.6%	62.3%	42.1%
Natural Resources and Mining	2.7%	16.2%	2.0%	69.4%	4.9%	36.6%	38.0%
Construction	5.9%	3.8%	12.5%	10.7%	3.8%	2.8%	2.3%
Manufacturing	10.0%	12.6%	18.7%	0.0%	10.9%	22.9%	1.8%
Service Providing	81.4%	67.4%	66.8%	19.9%	80.4%	37.7%	57.9%
Trade, Transportation, and Utilities	18.6%	15.2%	31.8%	12.5%	15.8%	16.6%	4.1%
Information	2.0%	1.2%	0.0%	0.0%	1.9%	0.0%	0.0%
Financial Activities	4.6%	1.4%	0.0%	0.0%	2.1%	0.2%	0.3%
Professional and Business Services	13.4%	9.8%	0.9%	2.8%	13.9%	3.0%	0.9%
Education and Health Services	23.1%	16.7%	5.8%	0.0%	24.0%	4.3%	2.6%
Leisure and Hospitality	11.4%	17.4%	21.9%	4.3%	15.1%	10.7%	49.3%
Other Services	4.2%	3.7%	1.5%	0.4%	4.7%	2.6%	0.6%
Public Administration	4.2%	2.1%	5.0%	0.0%	2.8%	0.4%	0.2%

Source: U.S. Census Bureau, LEHD Origin-Destination Employment Statistics, 2018 Q2

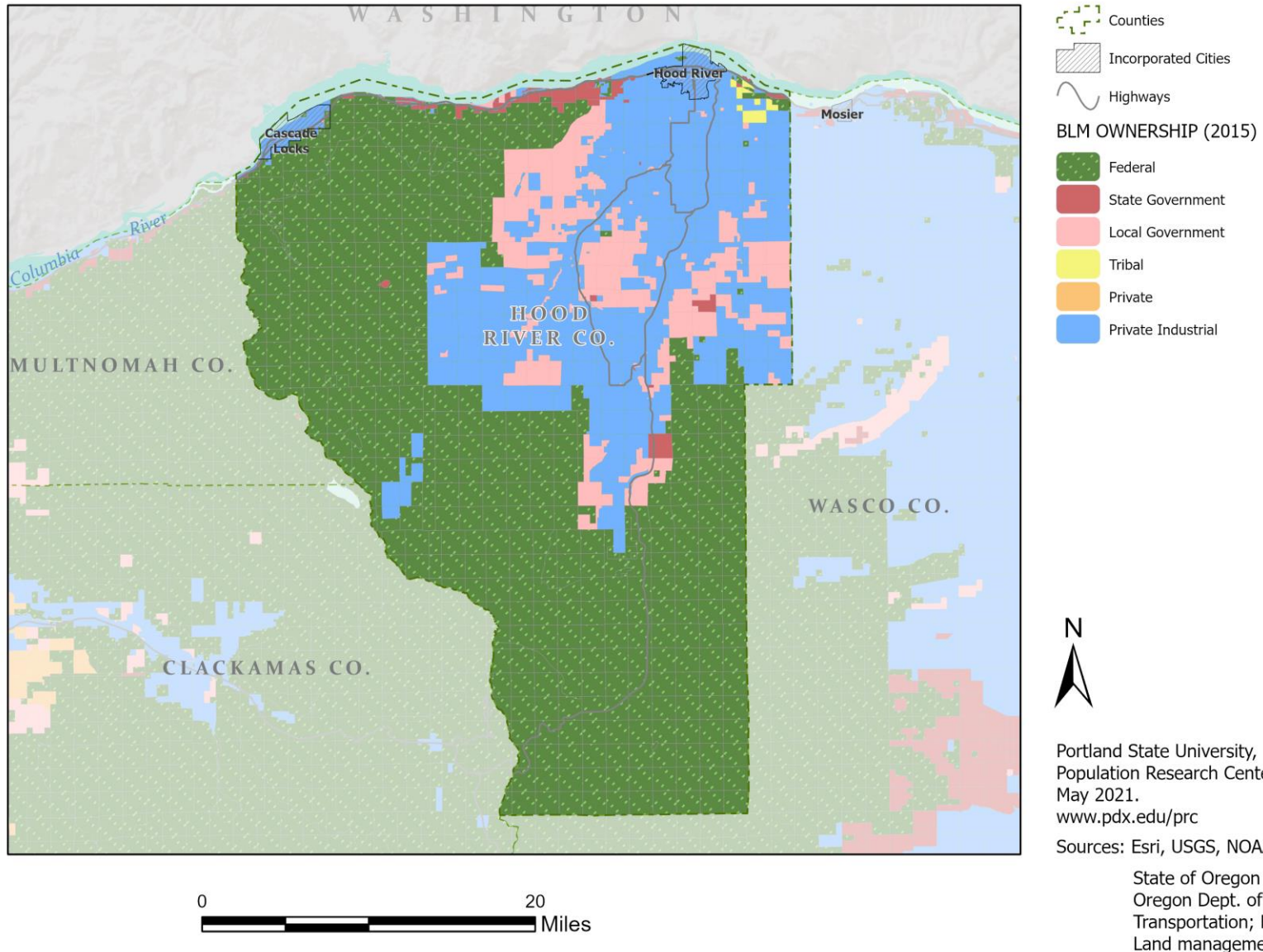
\* Jobs covered by unemployment insurance and federal workers.

# School Districts: Hood River County

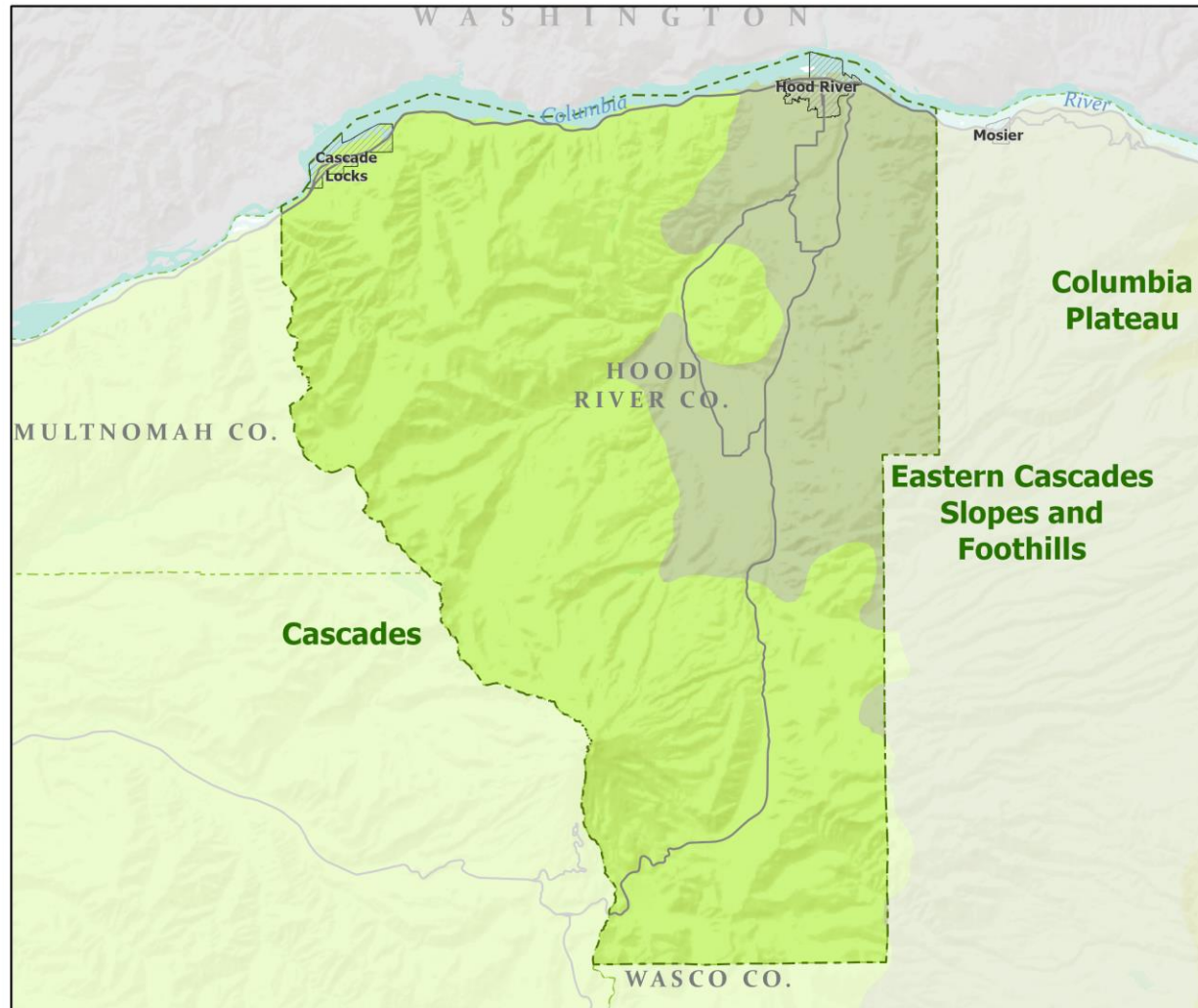




# Land Ownership: Hood River County



# Ecoregions: Hood River County



- Counties
- Incorporated Cities
- Highways
- LEVEL III ECOREGIONS OF OREGON (2006)
  - Cascades
  - Columbia Plateau
  - Eastern Cascades Slopes and Foothills



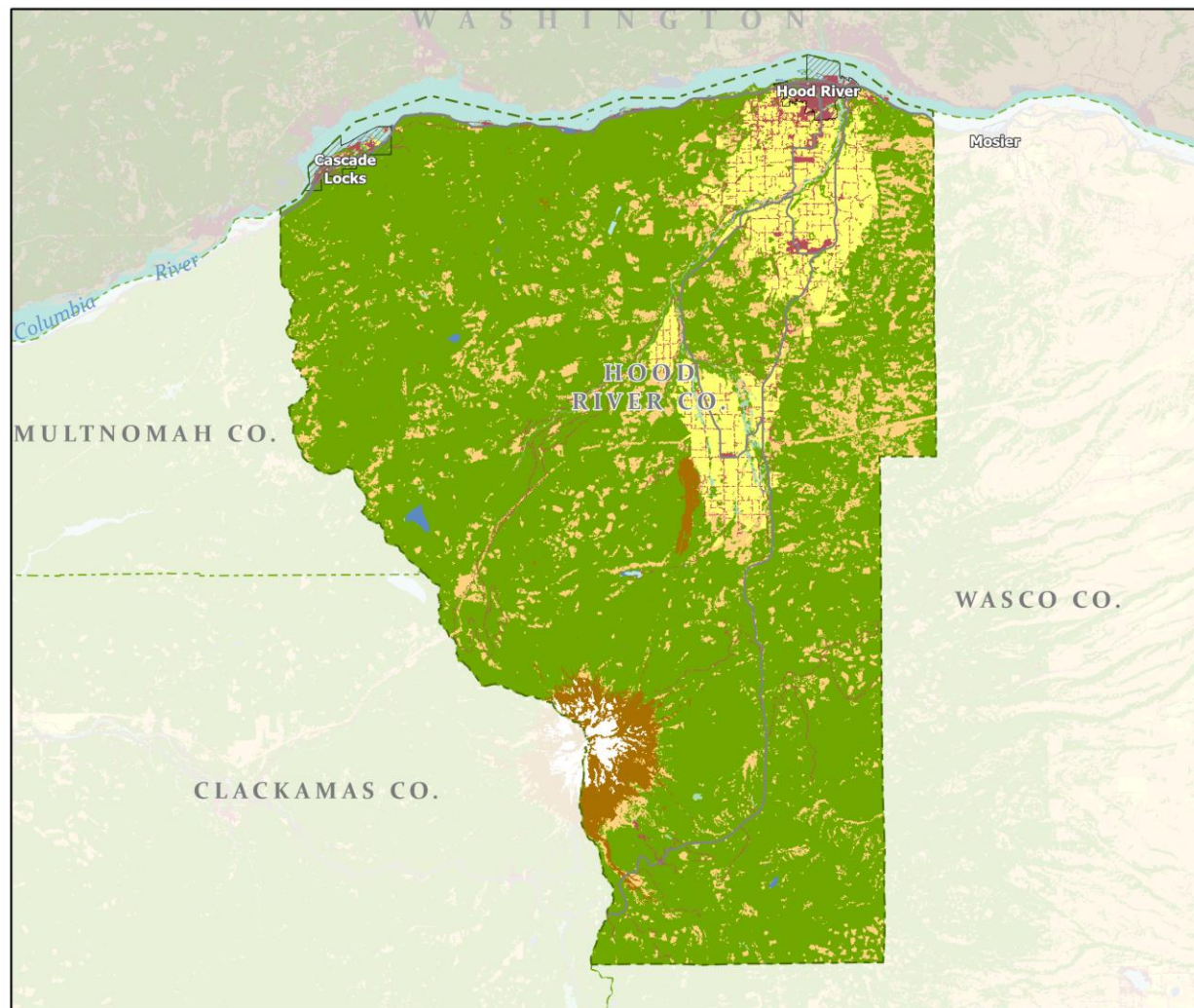
Portland State University,  
Population Research Center,  
May 2021.  
[www.pdx.edu/prc](http://www.pdx.edu/prc)

Sources: Esri, USGS, NOAA  
State of Oregon GEO;  
Oregon Dept. of  
Transportation.

0 20 Miles



# Land Cover: Hood River County



Counties

Incorporated Cities

Highways

## NATIONAL LAND COVER

Developed

Cultivated Crops/Pasture/Hay

Barren Land

Forest

Grasslands/Scrub/Sedge

Lichens/Moss

Wetlands

Perennial Snow/Ice

Open Water



Portland State University,  
Population Research Center,  
May 2021.  
[www.pdx.edu/prc](http://www.pdx.edu/prc)

Sources: Esri, USGS, NOAA  
State of Oregon GEO;  
Oregon Dept. of  
Transportation.

0 20 Miles