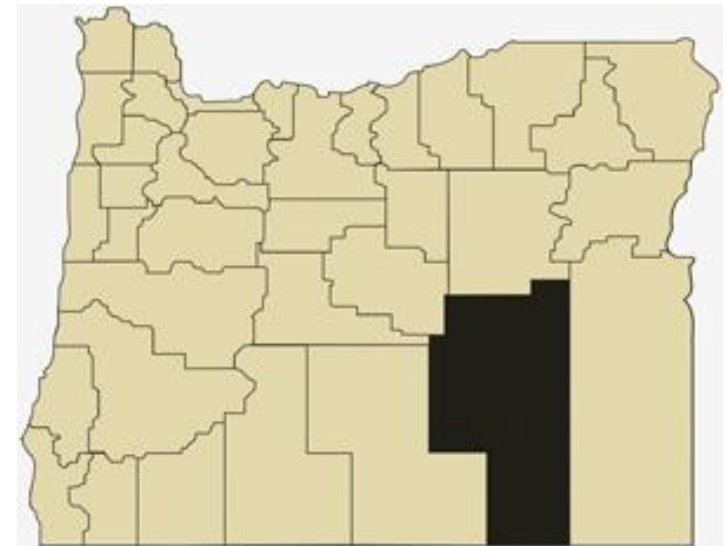


Harney County Overview

House and Senate Committees on Redistricting

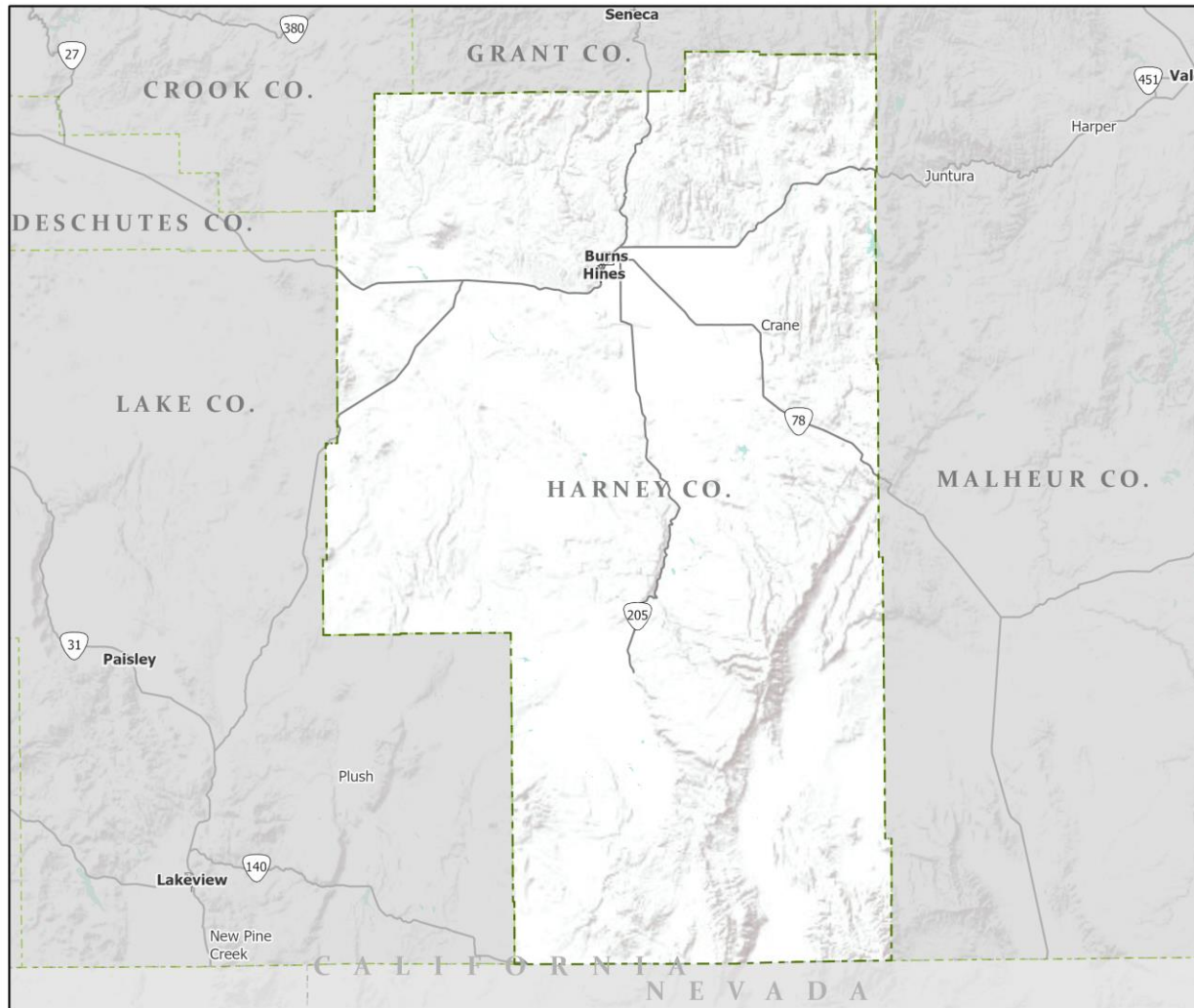
June 8, 2021

July 1, 2020 population estimate	7,280
Population rank	32nd
Share of state population	0.2%
Density (per square mile)	0.7
Density rank	36th
Area (square miles)	10,228
Area rank	1st
Share of state area	10.5%



Sources: PSU Population Research Center; Oregon Blue Book.

Highways: Harney County



- Counties
- Incorporated Cities
- Highways

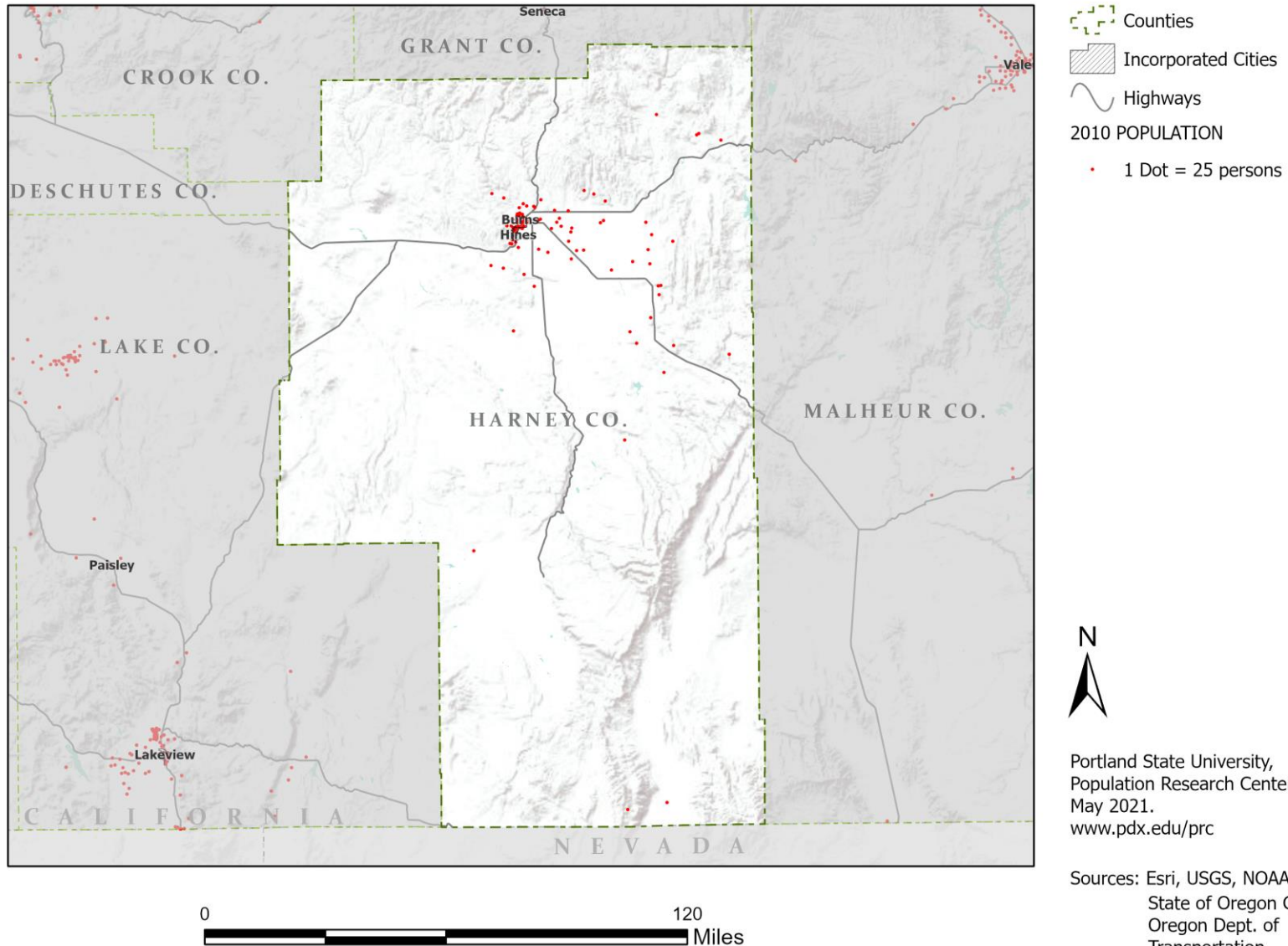


Portland State University,
Population Research Center,
May 2021.
www.pdx.edu/prc

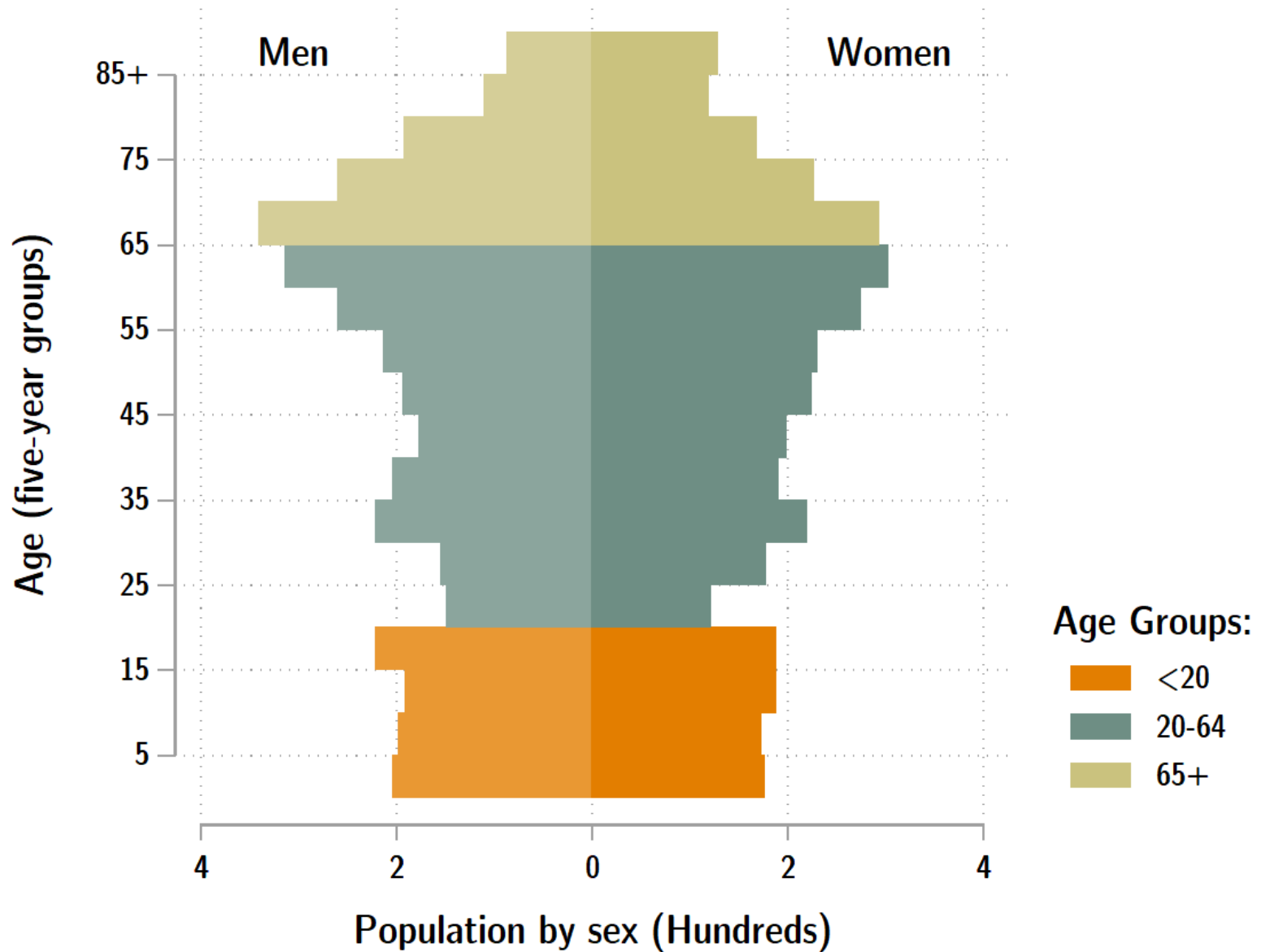
Sources: Esri, USGS, NOAA
State of Oregon GEO;
Oregon Dept. of
Transportation.

0 120 Miles

Population: Harney County



Harney population by age & sex: 2020



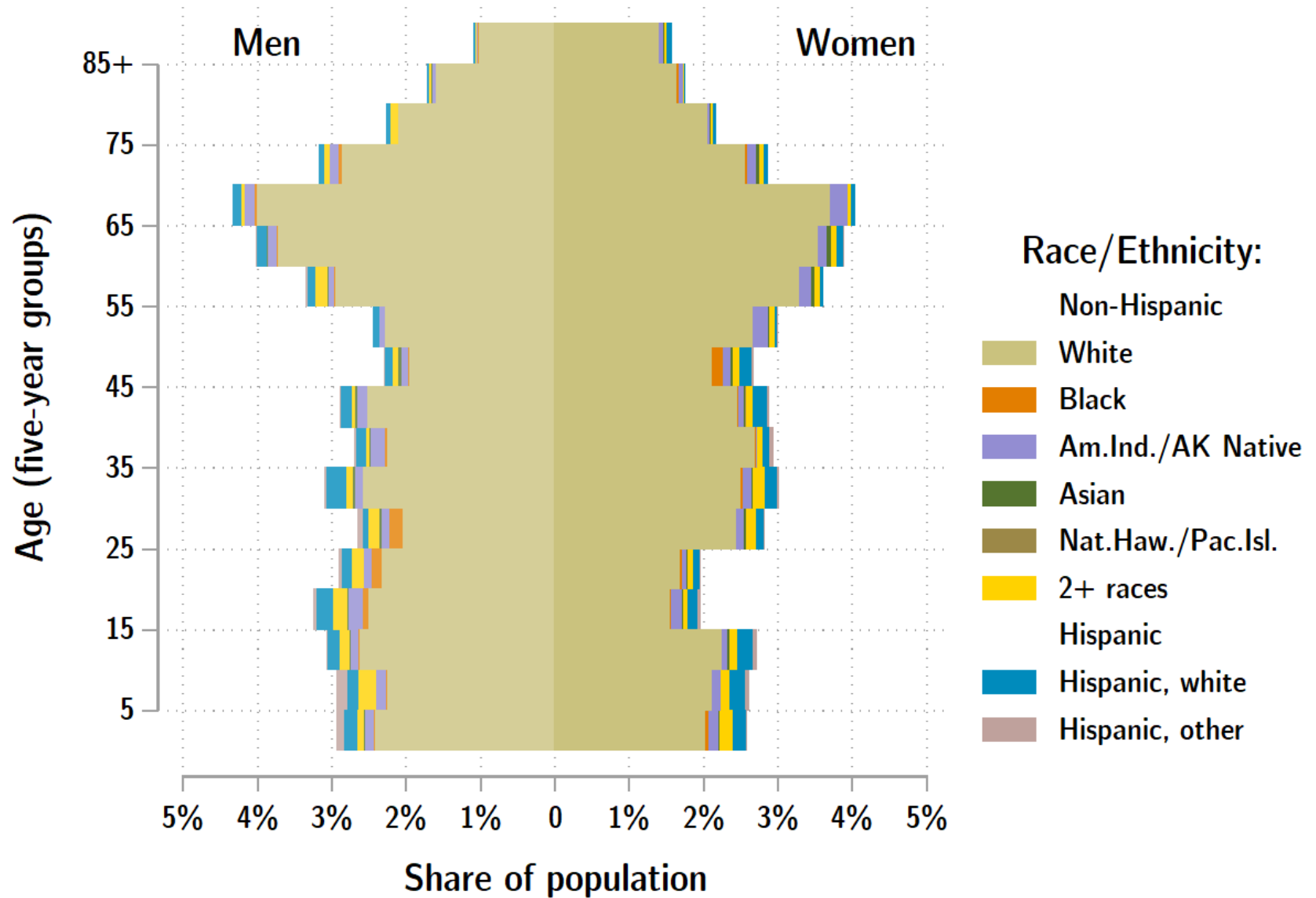
Source: Estimates by Population Research Center, PSU

Age Distribution, Harney County

Age Group	2020 Estimate	2020 Percent of Total	Oregon 2020 Percent of Total
Total population	7,280	100.0%	100.0%
Under age 5	379	5.2%	5.4%
Age 5 to 17	1,014	13.9%	14.9%
Age 18 to 64	3,963	54.4%	61.1%
Age 65 and over	1,924	26.4%	18.6%

Source: PSU Population Research Center July 1, 2020 Population Estimates

Harney County population by age & sex: 2019



Source: Estimates by US Census Bureau

Race and Ethnicity, Harney County

HISPANIC OR LATINO AND RACE	2010 Census	2010 Census Percent	2015-19 ACS Estimate	2015-19 ACS Percent	Oregon 2015-19 ACS Percent
Total population	7,422	100.0%	7,267	100.0%	100.0%
Hispanic or Latino	294	4.0%	371	5.1%*	13.0%
Not Hispanic or Latino	7,128	96.0%	6,896	94.9%*	87.0%
White alone	6,648	89.6%	6,325	87.0%*	75.7%
Black or African American alone	16	0.2%	35	0.5%	1.8%
American Indian and Alaska Native alone	227	3.1%	100	1.4%*	0.9%
Asian alone	34	0.5%	0	0.0%	4.3%
Native Hawaiian and Other Pacific Islander alone	1	0.0%	2	0.0%	0.4%
Some Other Race alone	6	0.1%	0	0.0%	0.1%
Two or More Races	196	2.6%	434	6.0%*	3.7%

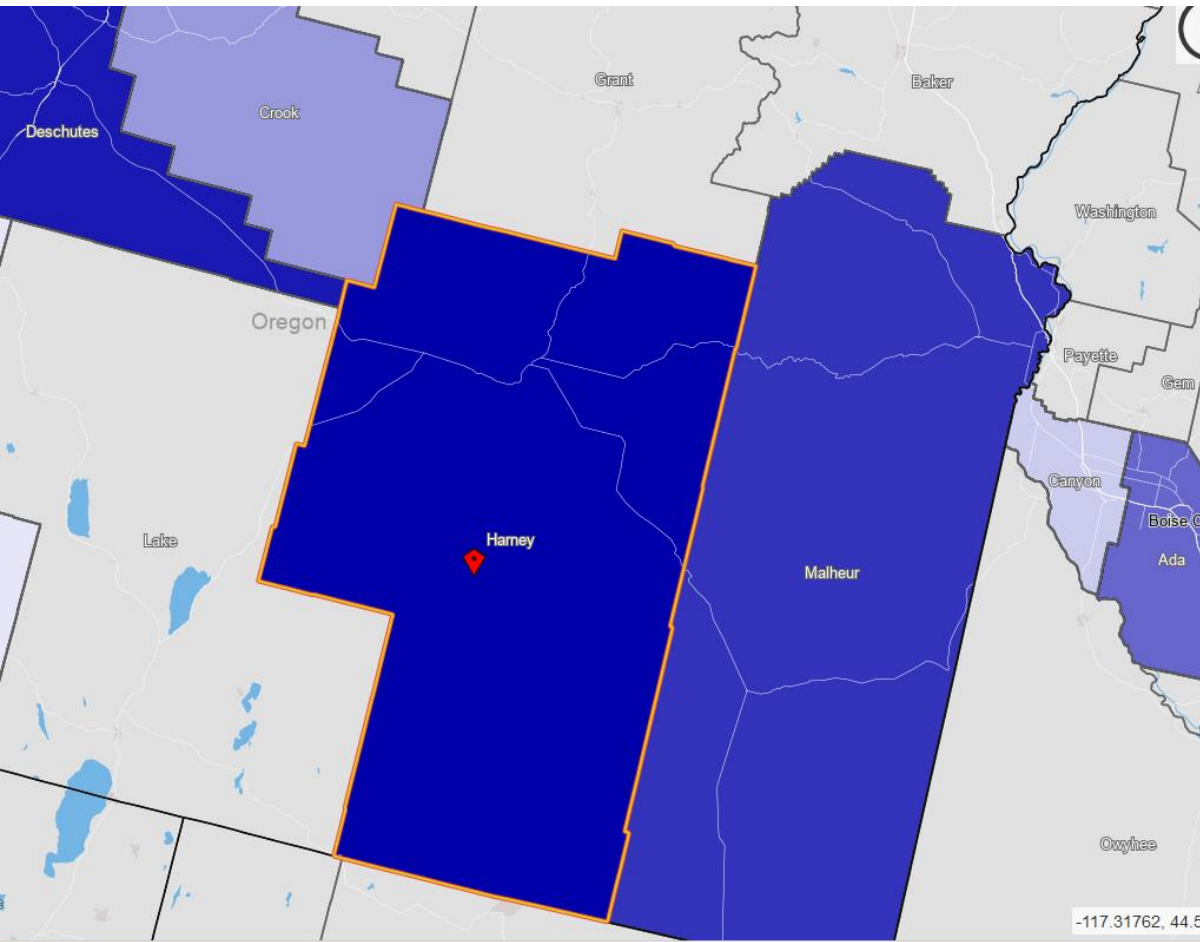
RACE ALONE OR IN COMBINATION WITH ONE OR MORE OTHER RACES**	2010 Census	2010 Census Percent	2015-19 ACS Estimate	2015-19 ACS Percent	Oregon 2015-19 ACS Percent
White	7,034	94.8%	7,096	97.6%*	88.8%
Black or African American	36	0.5%	73	1.0%	2.9%
American Indian and Alaska Native	383	5.2%	468	6.4%*	3.1%
Asian	70	0.9%	77	1.1%	6.0%
Native Hawaiian and Other Pacific Islander	13	0.2%	23	0.3%	0.8%
Some Other Race	114	1.5%	9	0.1%*	3.6%

Source: U.S. Census Bureau, 2010 Census and 2019 5-year American Community Survey estimates.

* Difference between 2010 Census and 2015-19 ACS is statistically significant at the 90% confidence level.

** Total may add to more than 100% due to persons identifying as more than one race.

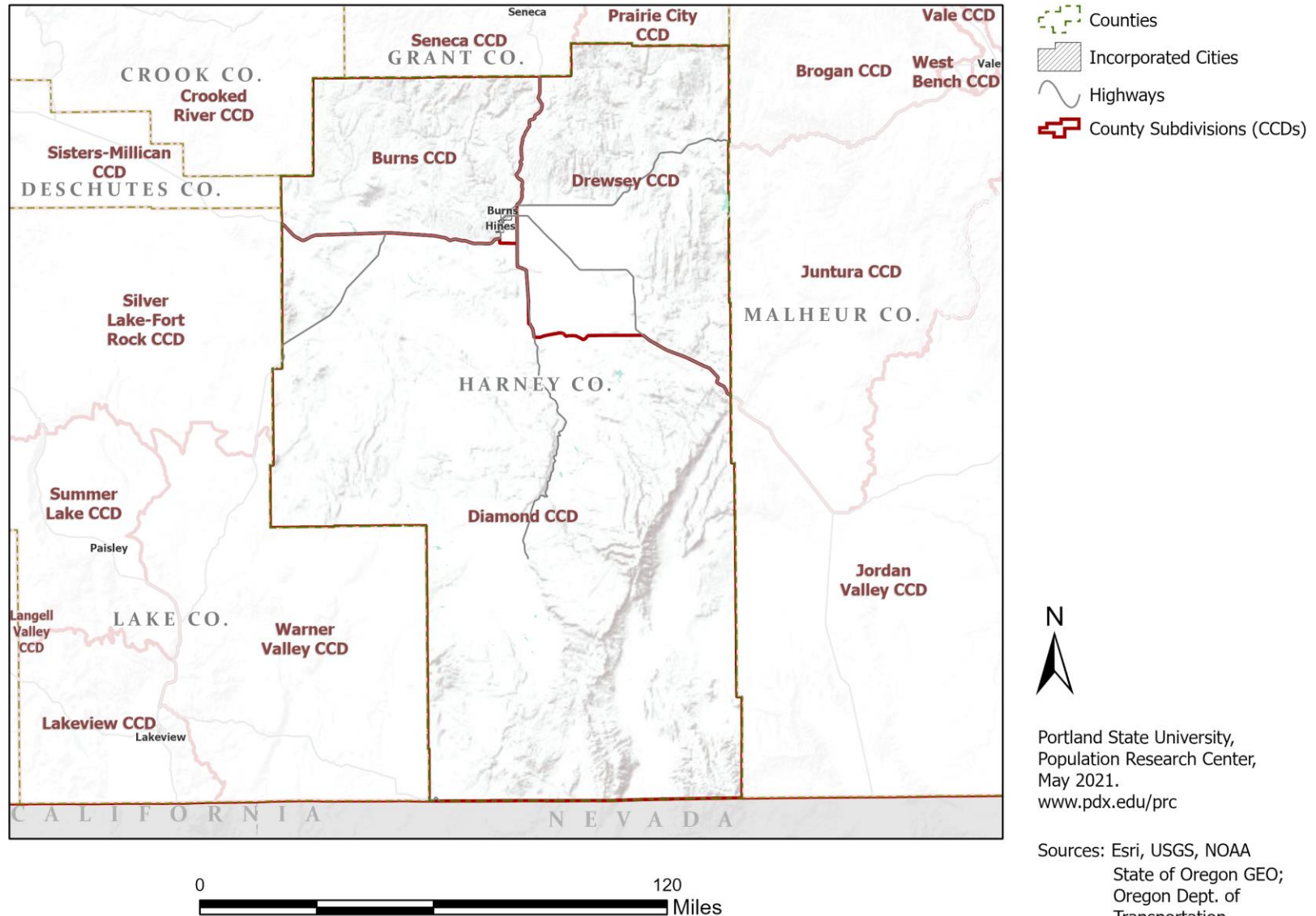
Harney County Commute Flows



Jobs Counts by Counties Where Workers are Employed - All Jobs

2018		
	Count	Share
All Counties	2,691	100.0%
Harney County, OR	1,806	67.1%
Deschutes County, OR	128	4.8%
Malheur County, OR	53	2.0%
Jackson County, OR	52	1.9%
Ada County, ID	51	1.9%
Multnomah County, OR	50	1.9%
Crook County, OR	45	1.7%
Marion County, OR	42	1.6%
Canyon County, ID	37	1.4%
Klamath County, OR	35	1.3%
All Other Locations	392	14.6%

County Subdivisions (CCDs): Harney County



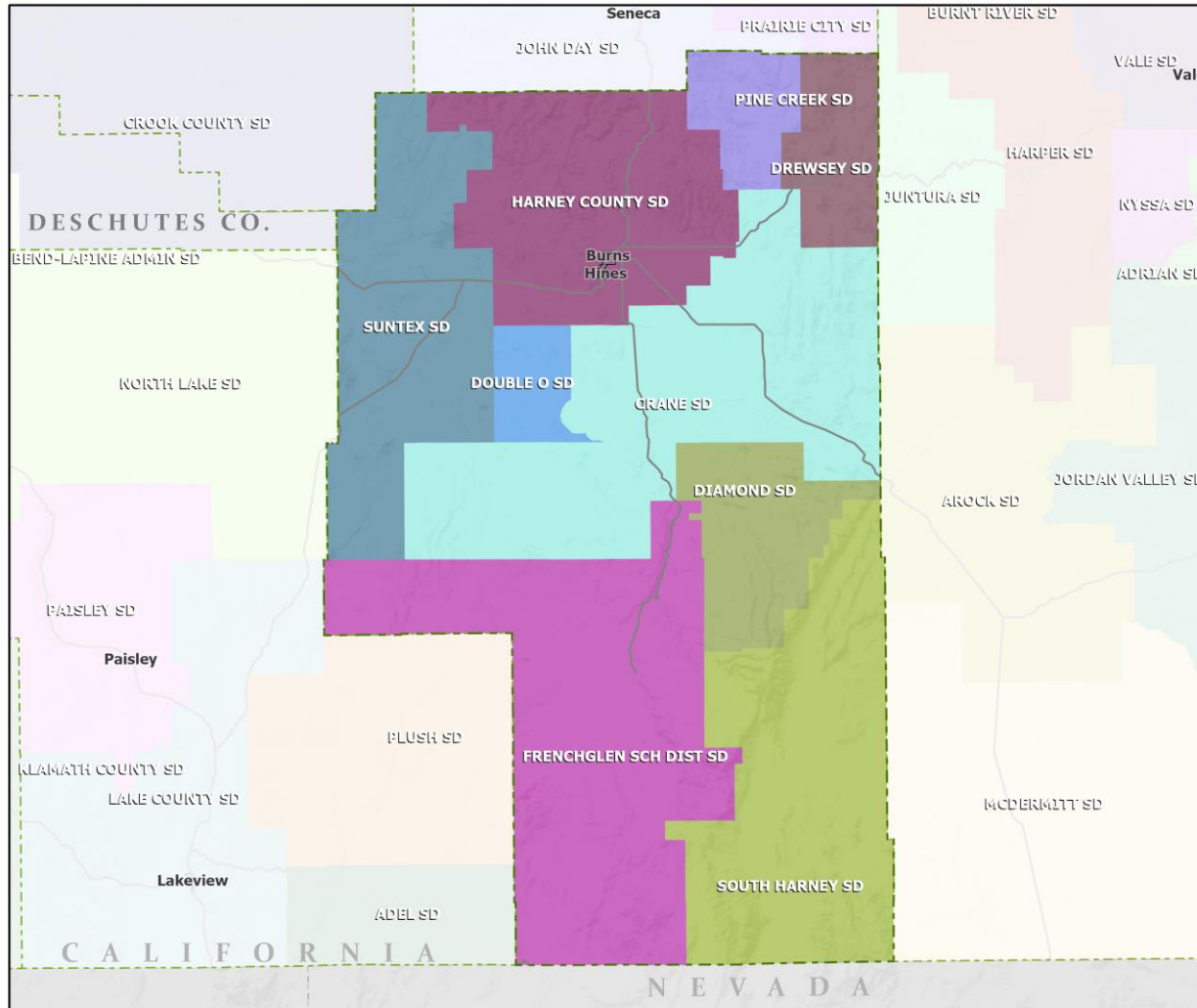
Harney County Employment by Sector by Census County Division

Sector	Oregon	County Total	Burns CCD	Diamond CCD	Drewsey CCD
Total, All Jobs*	1,904,601	2,399	1,943	273	183
Goods-Producing	18.6%	15.0%	11.4%	30.8%	29.0%
Natural Resources and Mining	2.7%	8.9%	4.6%	30.4%	22.4%
Construction	5.9%	5.9%	6.6%	0.4%	6.6%
Manufacturing	10.0%	0.2%	0.3%	0.0%	0.0%
Service Providing	81.4%	85.0%	88.6%	69.2%	71.0%
Trade, Transportation, and Utilities	18.6%	17.2%	19.9%	2.6%	10.9%
Information	2.0%	0.6%	0.8%	0.0%	0.0%
Financial Activities	4.6%	1.8%	2.0%	0.0%	2.2%
Professional and Business Services	13.4%	4.3%	3.9%	0.7%	14.2%
Education and Health Services	23.1%	30.6%	33.2%	18.7%	20.2%
Leisure and Hospitality	11.4%	10.0%	10.6%	7.3%	7.1%
Other Services	4.2%	4.3%	4.3%	3.3%	5.5%
Public Administration	4.2%	16.3%	14.0%	36.6%	10.9%

Source: U.S. Census Bureau, LEHD Origin-Destination Employment Statistics, 2018 Q2

* Jobs covered by unemployment insurance and federal workers.

School Districts: Harney County



- Counties
- Incorporated Cities
- Highways

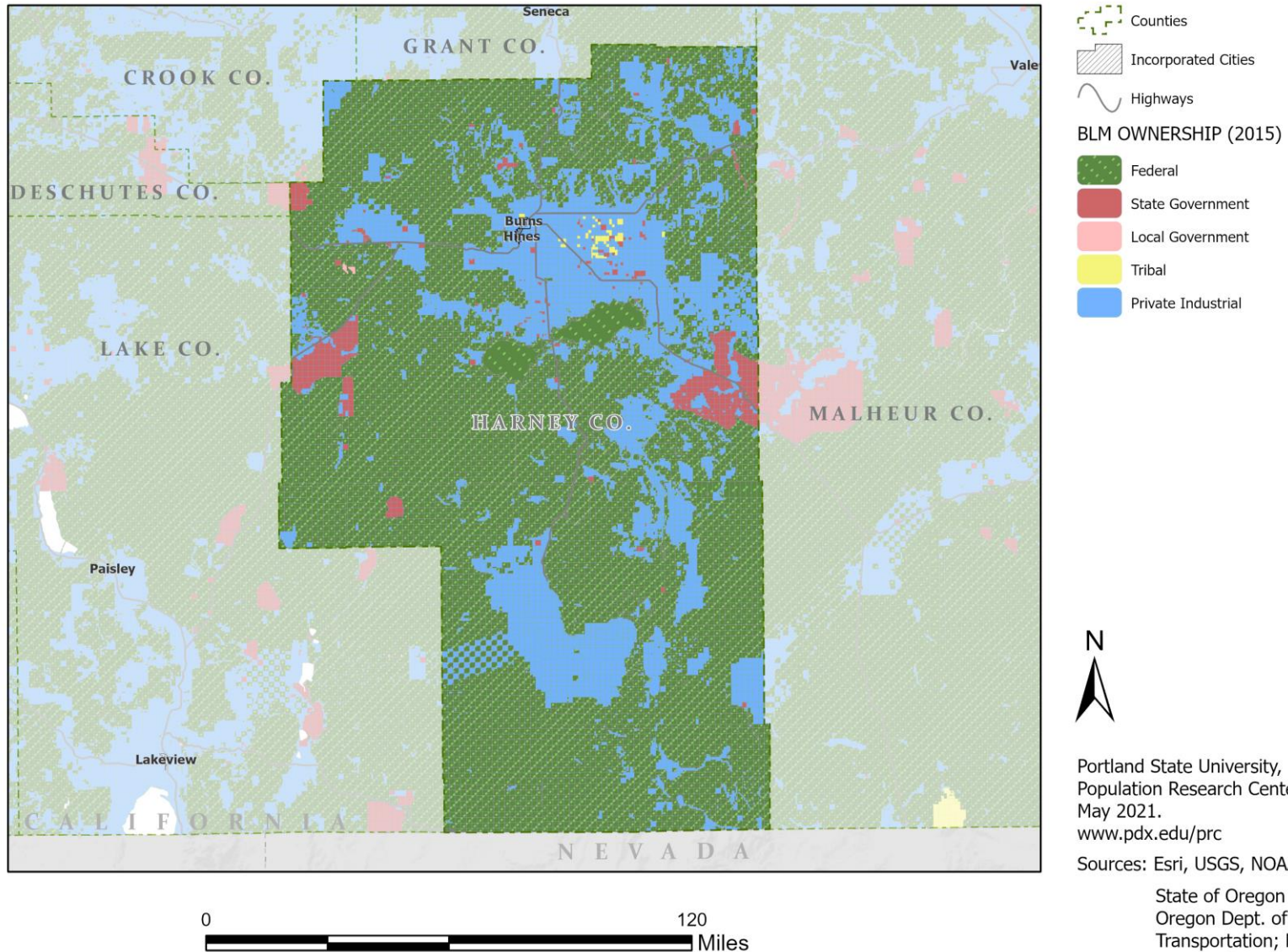


Portland State University,
Population Research Center,
May 2021.
www.pdx.edu/prc

Sources: Esri, USGS, NOAA
State of Oregon GEO;
Oregon Dept. of
Transportation.



Land Ownership: Harney County

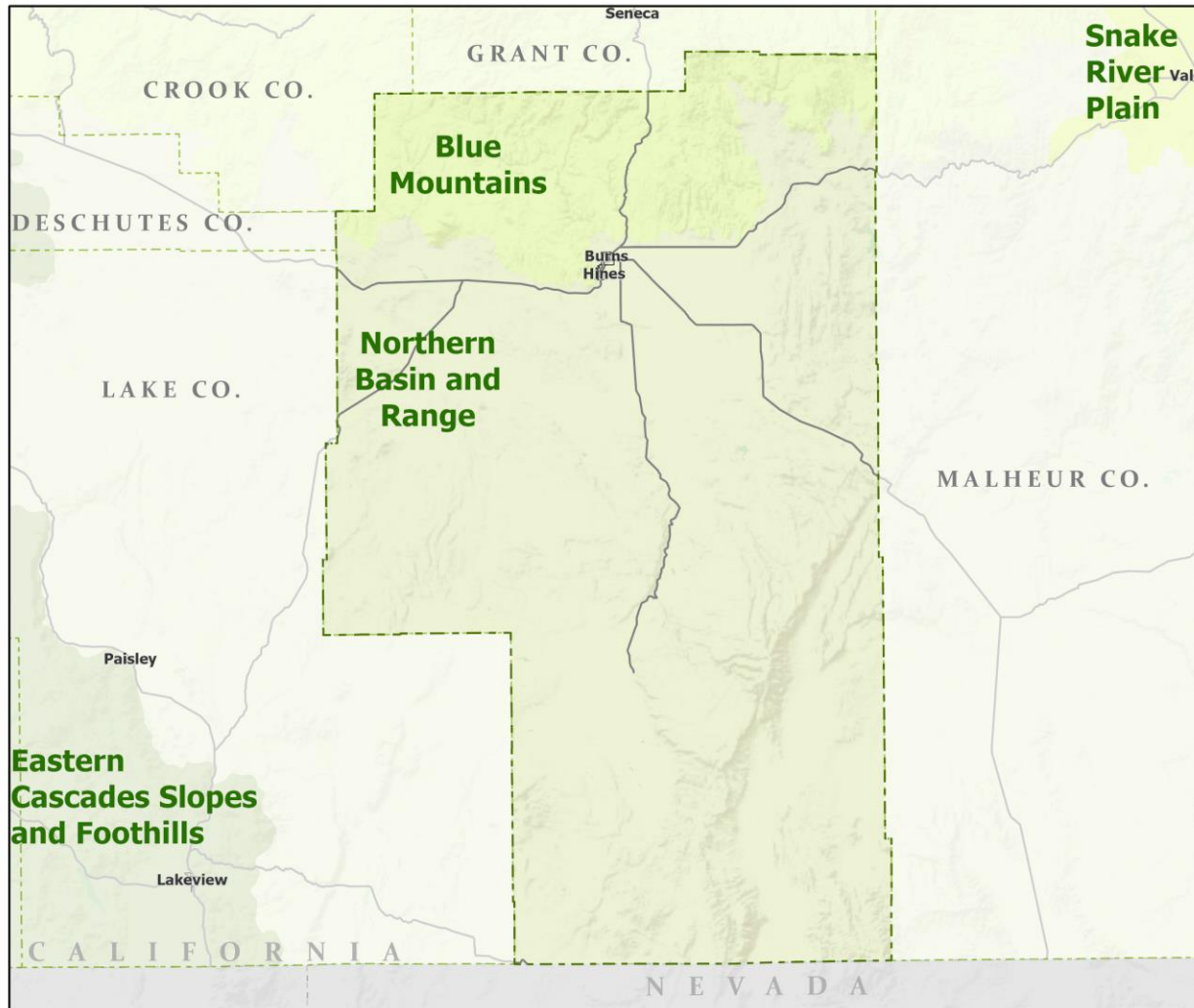


Portland State University,
Population Research Center,
May 2021.
www.pdx.edu/prc

Sources: Esri, USGS, NOAA

State of Oregon GEO;
Oregon Dept. of
Transportation; Bureau of
Land management.

Ecoregions: Harney County



- Counties
- Incorporated Cities
- Highways
- LEVEL III ECOREGIONS OF OREGON (2006)
 - Blue Mountains
 - Eastern Cascades Slopes and Foothills
 - Northern Basin and Range
 - Snake River Plain



Portland State University,
Population Research Center,
May 2021.
www.pdx.edu/prc

Sources: Esri, USGS, NOAA
State of Oregon GEO;
Oregon Dept. of
Transportation.

Land Cover: Harney County

