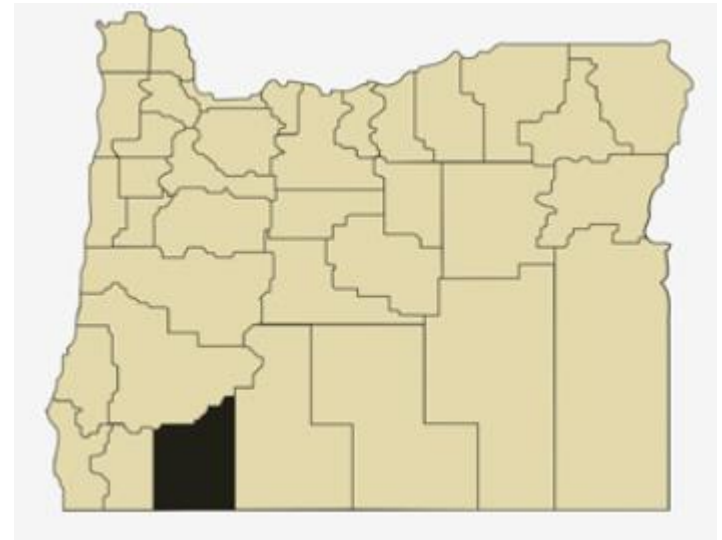


Jackson County Overview

House and Senate Committees on Redistricting

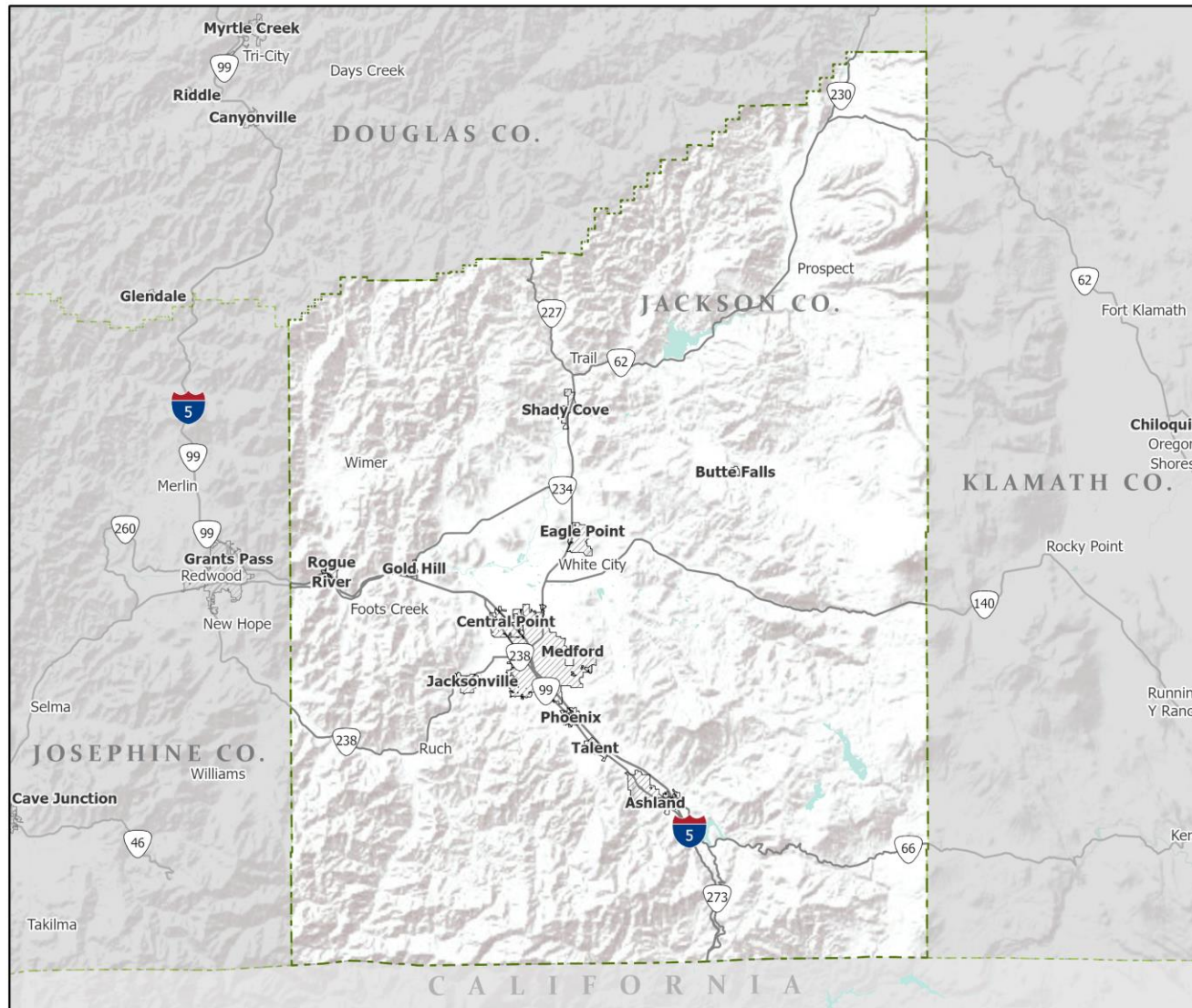
June 2, 2021

July 1, 2020 population estimate	223,240
Population rank	6th
Share of state population	5.2%
Density (per square mile)	79.7
Density rank	9th
Area (square miles)	2,801
Area rank	13th
Share of state area	2.9%



Sources: PSU Population Research Center; Oregon Blue Book.

Highways: Jackson County



- Counties
- Incorporated Cities
- Highways

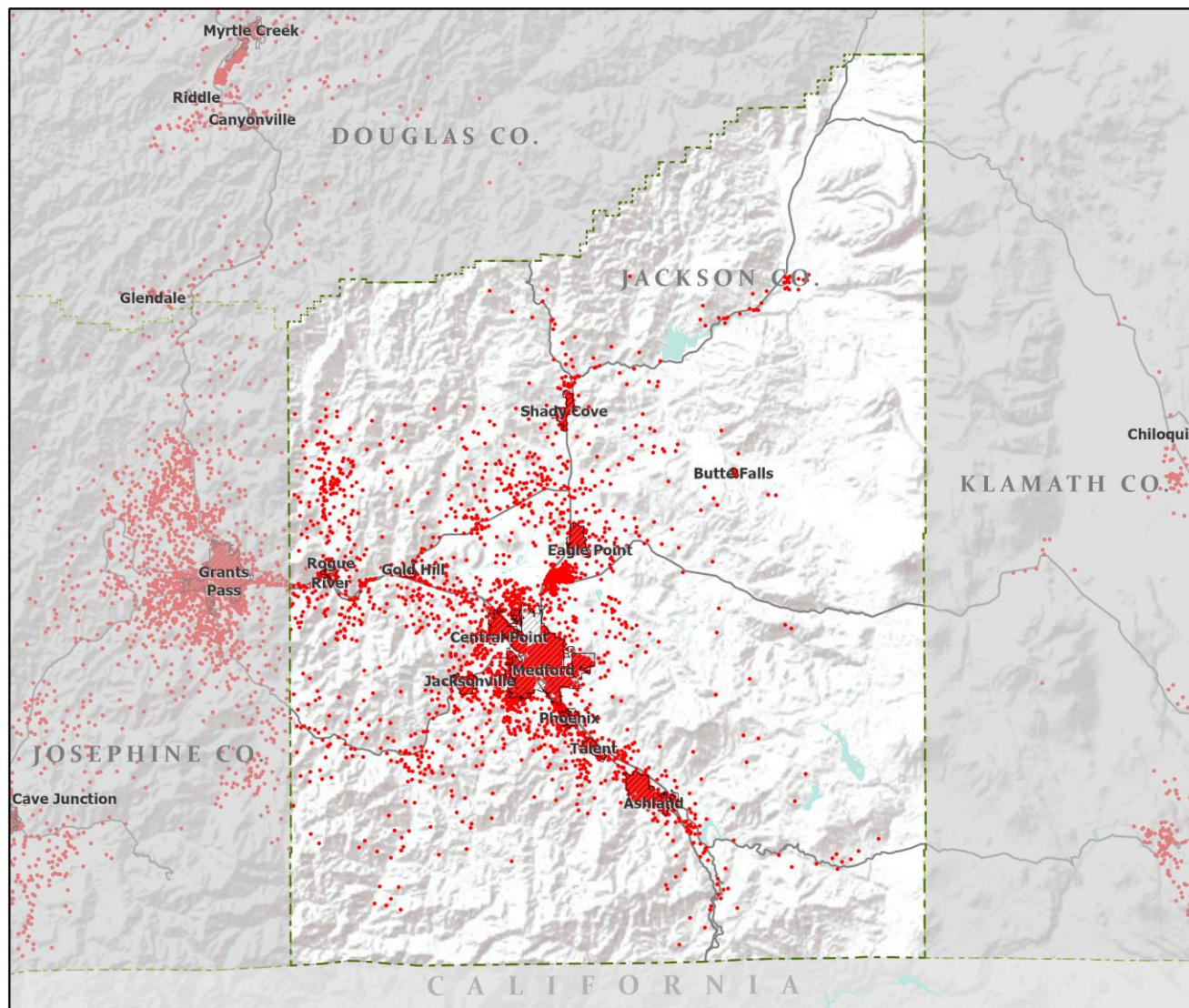


Portland State University,
Population Research Center,
May 2021.
www.pdx.edu/prc

Sources: Esri, USGS, NOAA
State of Oregon GEO;
Oregon Dept. of
Transportation.

0 60 Miles

Population: Jackson County



- Counties
- Incorporated Cities
- Highways
- 2010 POPULATION
- 1 Dot = 25 persons



Portland State University,
Population Research Center,
May 2021.
www.pdx.edu/prc

Sources: Esri, USGS, NOAA
State of Oregon GEO;
Oregon Dept. of
Transportation.

0 60 Miles

Jackson population by age & sex: 2020



Note: Men plotted on negative axis

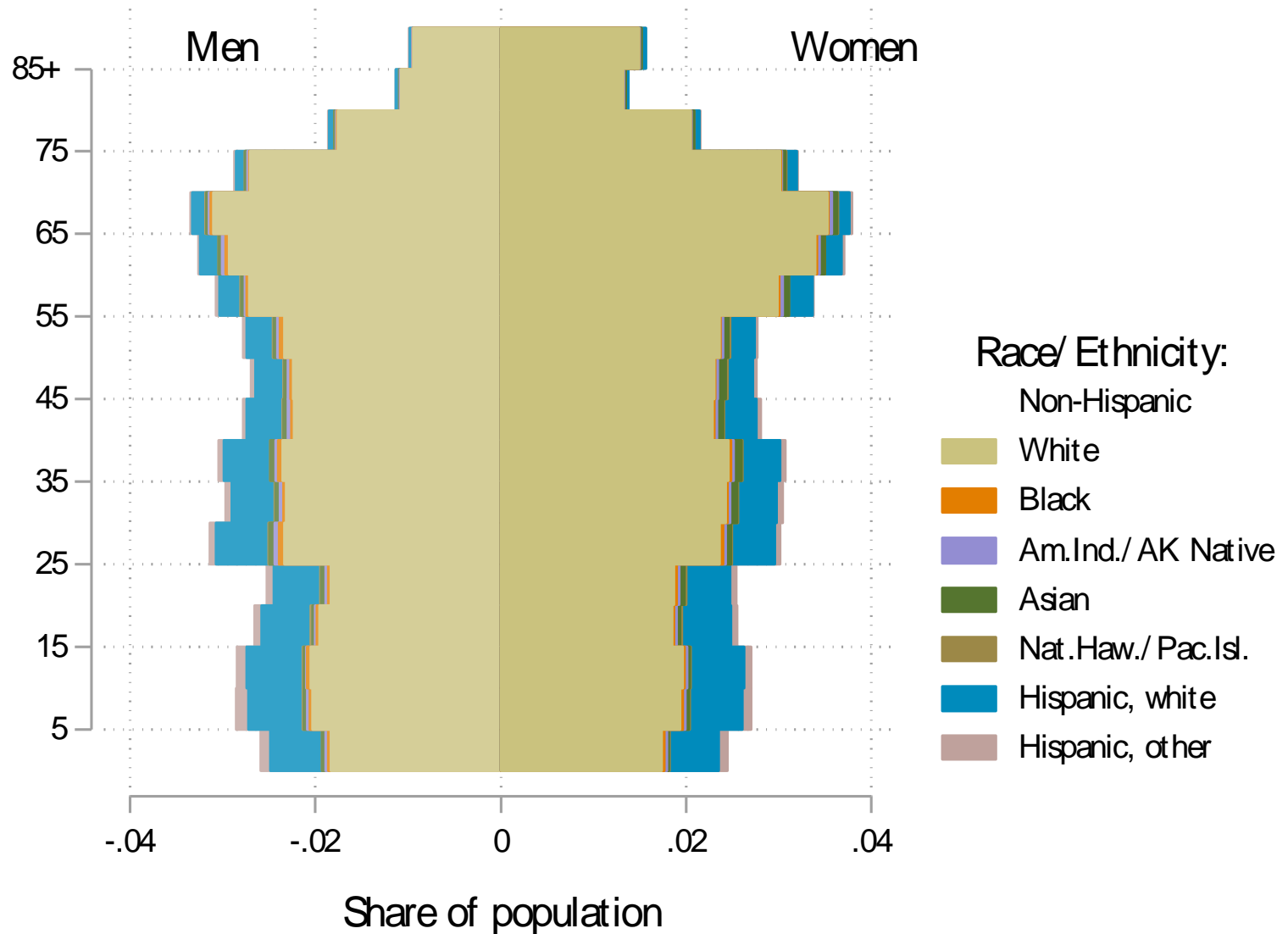
Source: Estimates by Population Research Center, PSU

Age Distribution, Jackson County

Age Group	2020 Estimate	2020 Percent of Total	Oregon 2020 Percent of Total
Total population	223,240	100.0%	100.0%
Under age 5	11,763	5.3%	5.4%
Age 5 to 17	31,955	14.3%	14.9%
Age 18 to 64	126,890	56.8%	61.1%
Age 65 and over	52,632	23.6%	18.6%

Source: PSU Population Research Center July 1, 2020 Population Estimates

Jackson County population by age & sex: 2019



Note: Men plotted on negative axis

Source: Estimates by US Census Bureau

Race and Ethnicity, Jackson County

	2010 Census	2010 Census Percent	2015-19 ACS Estimate	2015-19 ACS Percent	Oregon 2015-19 ACS Percent
HISPANIC OR LATINO AND RACE					
Total population	203,206	100.0%	216,574	100.0%	100.0%
Hispanic or Latino	21,745	10.7%	27,778	12.8%*	13.0%
Not Hispanic or Latino	181,461	89.3%	188,796	87.2%*	87.0%
White alone	170,023	83.7%	175,058	80.8%*	75.7%
Black or African American alone	1,227	0.6%	1,462	0.7%	1.8%
American Indian and Alaska Native alone	1,874	0.9%	2,294	1.1%	0.9%
Asian alone	2,304	1.1%	2,755	1.3%*	4.3%
Native Hawaiian and Other Pacific Islander alone	562	0.3%	727	0.3%	0.4%
Some Other Race alone	229	0.1%	328	0.2%	0.1%
Two or More Races	5,242	2.6%	6,172	2.8%	3.7%

	2010 Census	2010 Census Percent	2015-19 ACS Estimate	2015-19 ACS Percent	Oregon 2015-19 ACS Percent
RACE ALONE OR IN COMBINATION WITH ONE OR MORE OTHER RACES**					
White	186,865	92.0%	205,340	94.8%*	88.8%
Black or African American	2,558	1.3%	3,147	1.5%*	2.9%
American Indian and Alaska Native	5,776	2.8%	6,423	3.0%	3.1%
Asian	3,914	1.9%	5,150	2.4%*	6.0%
Native Hawaiian and Other Pacific Islander	1,212	0.6%	1,267	0.6%	0.8%
Some Other Race	10,616	5.2%	3,704	1.7%*	3.6%

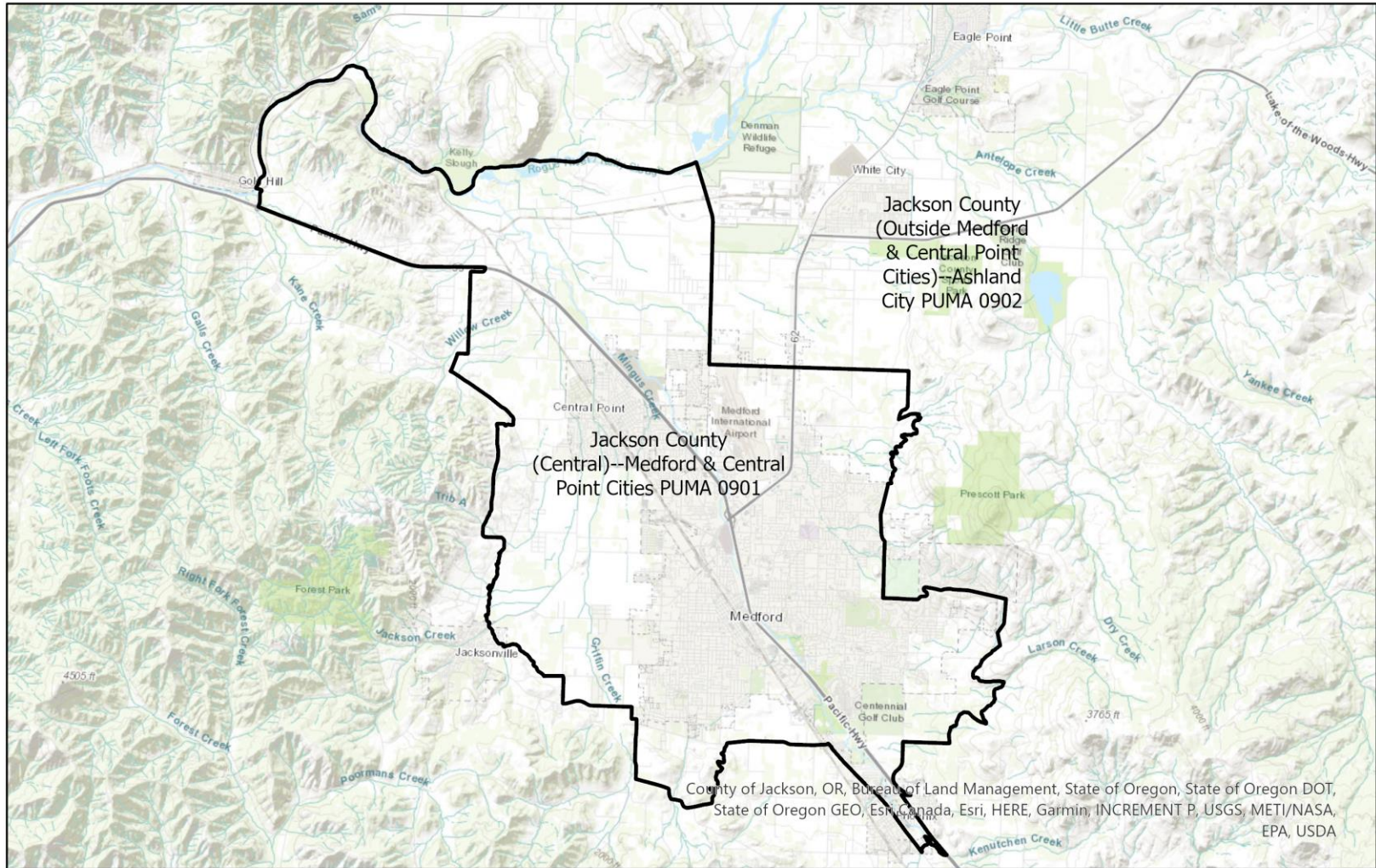
Source: U.S. Census Bureau, 2010 Census and 2019 5-year American Community Survey estimates.

* Difference between 2010 Census and 2015-19 ACS is statistically significant at the 90% confidence level.

** Total may add to more than 100% due to persons identifying as more than one race.

Jackson County Public Use Microdata Areas

(Groups of census tracts with 100,000 population minimum)



Source: U.S. Census Bureau.

Prepared by Portland State University
Population Research Center.

Race and Ethnicity, Jackson County (Central)— Medford & Central Point Cities PUMA 0901

HISPANIC OR LATINO AND RACE	2010 Census	2010 Census Percent	2015-19 ACS Estimate	2015-19 ACS Percent	Oregon 2015-19 ACS Percent
Total population	103,186	100.0%	111,779	100.0%	100.0%
Hispanic or Latino	13,364	13.0%	17,436	15.6%*	13.0%
Not Hispanic or Latino	89,822	87.0%	94,343	84.4%*	87.0%
White alone	83,636	81.1%	86,345	77.2%*	75.7%
Black or African American alone	689	0.7%	670	0.6%	1.8%
American Indian and Alaska Native alone	960	0.9%	1,768	1.6%*	0.9%
Asian alone	1,309	1.3%	1,437	1.3%	4.3%
Native Hawaiian and Other Pacific Islander alone	415	0.4%	633	0.6%*	0.4%
Some Other Race alone	96	0.1%	208	0.2%	0.1%
Two or More Races	2,717	2.6%	3,282	2.9%	3.7%

RACE ALONE OR IN COMBINATION WITH ONE OR MORE OTHER RACES**	2010 Census	2010 Census Percent	2015-19 ACS Estimate	2015-19 ACS Percent	Oregon 2015-19 ACS Percent
White	93,330	90.4%	104,563	93.5%*	88.8%
Black or African American	1,481	1.4%	1,754	1.6%	2.9%
American Indian and Alaska Native	2,964	2.9%	4,126	3.7%*	3.1%
Asian	2,155	2.1%	2,650	2.4%	6.0%
Native Hawaiian and Other Pacific Islander	806	0.8%	997	0.9%	0.8%
Some Other Race	6,573	6.4%	2,454	2.2%*	3.6%

Source: U.S. Census Bureau, 2010 Census and 2019 5-year American Community Survey estimates. PUMAs are Public Use Microdata Areas, groups of census tracts with a population of 100,000 or greater.

* Difference between 2010 Census and 2015-19 ACS is statistically significant at the 90% confidence level.

** Total may add to more than 100% due to persons identifying as more than one race.

Race and Ethnicity, Jackson County (Outside Medford & Central Point Cities)—Ashland City PUMA 0902

HISPANIC OR LATINO AND RACE	2010 Census	2010 Census Percent	2015-19 ACS Estimate	2015-19 ACS Percent	Oregon 2015-19 ACS Percent
Total population	100,020	100.0%	104,795	100.0%	100.0%
Hispanic or Latino	8,381	8.4%	10,342	9.9%*	13.0%
Not Hispanic or Latino	91,639	91.6%	94,453	90.1%*	87.0%
White alone	86,387	86.4%	88,713	84.7%*	75.7%
Black or African American alone	538	0.5%	792	0.8%*	1.8%
American Indian and Alaska Native alone	914	0.9%	526	0.5%*	0.9%
Asian alone	995	1.0%	1,318	1.3%	4.3%
Native Hawaiian and Other Pacific Islander alone	147	0.1%	94	0.1%	0.4%
Some Other Race alone	133	0.1%	120	0.1%	0.1%
Two or More Races	2,525	2.5%	2,890	2.8%	3.7%

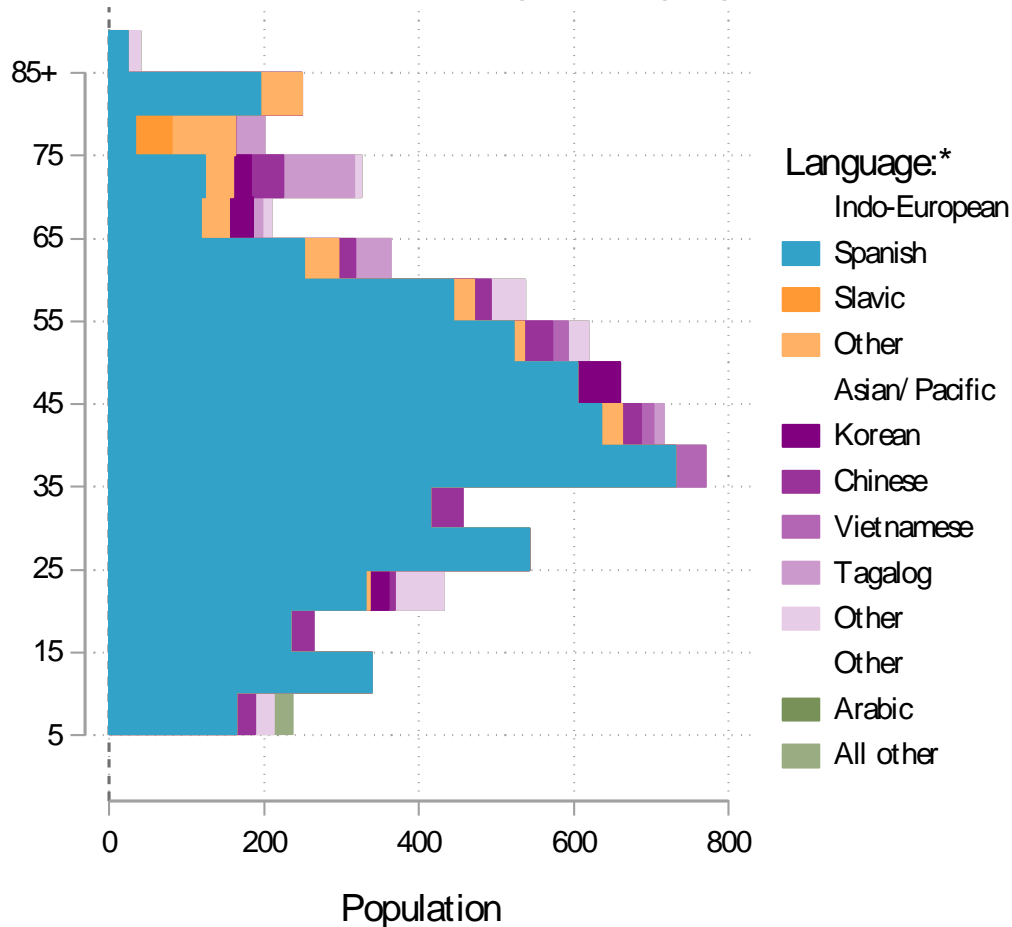
RACE ALONE OR IN COMBINATION WITH ONE OR MORE OTHER RACES**	2010 Census	2010 Census Percent	2015-19 ACS Estimate	2015-19 ACS Percent	Oregon 2015-19 ACS Percent
White	93,535	93.5%	100,777	96.2%*	88.8%
Black or African American	1,077	1.1%	1,393	1.3%	2.9%
American Indian and Alaska Native	2,812	2.8%	2,297	2.2%*	3.1%
Asian	1,759	1.8%	2,500	2.4%*	6.0%
Native Hawaiian and Other Pacific Islander	406	0.4%	270	0.3%*	0.8%
Some Other Race	4,043	4.0%	1,250	1.2%*	3.6%

Source: U.S. Census Bureau, 2010 Census and 2019 5-year American Community Survey estimates. PUMAs are Public Use Microdata Areas, groups of census tracts with a population of 100,000 or greater.

* Difference between 2010 Census and 2015-19 ACS is statistically significant at the 90% confidence level.

** Total may add to more than 100% due to persons identifying as more than one race.

Jackson County population by age & language: 2019



Language Spoken at Home Speak English less than "very well" Jackson County

Languages	Estimate
Total Population Age 5 and Older	204,663
Speaking English less than "very well"	7,238
Spanish	5,883
Russian, Polish, or other Slavic languages	63
Other Indo-European languages	410
Korean	115
Chinese (incl. Cantonese and Mandarin)	205
Vietnamese	152
Tagalog (incl. Filipino)	162
Other Asian and Pacific Island languages	177
Arabic	0
Other languages	71

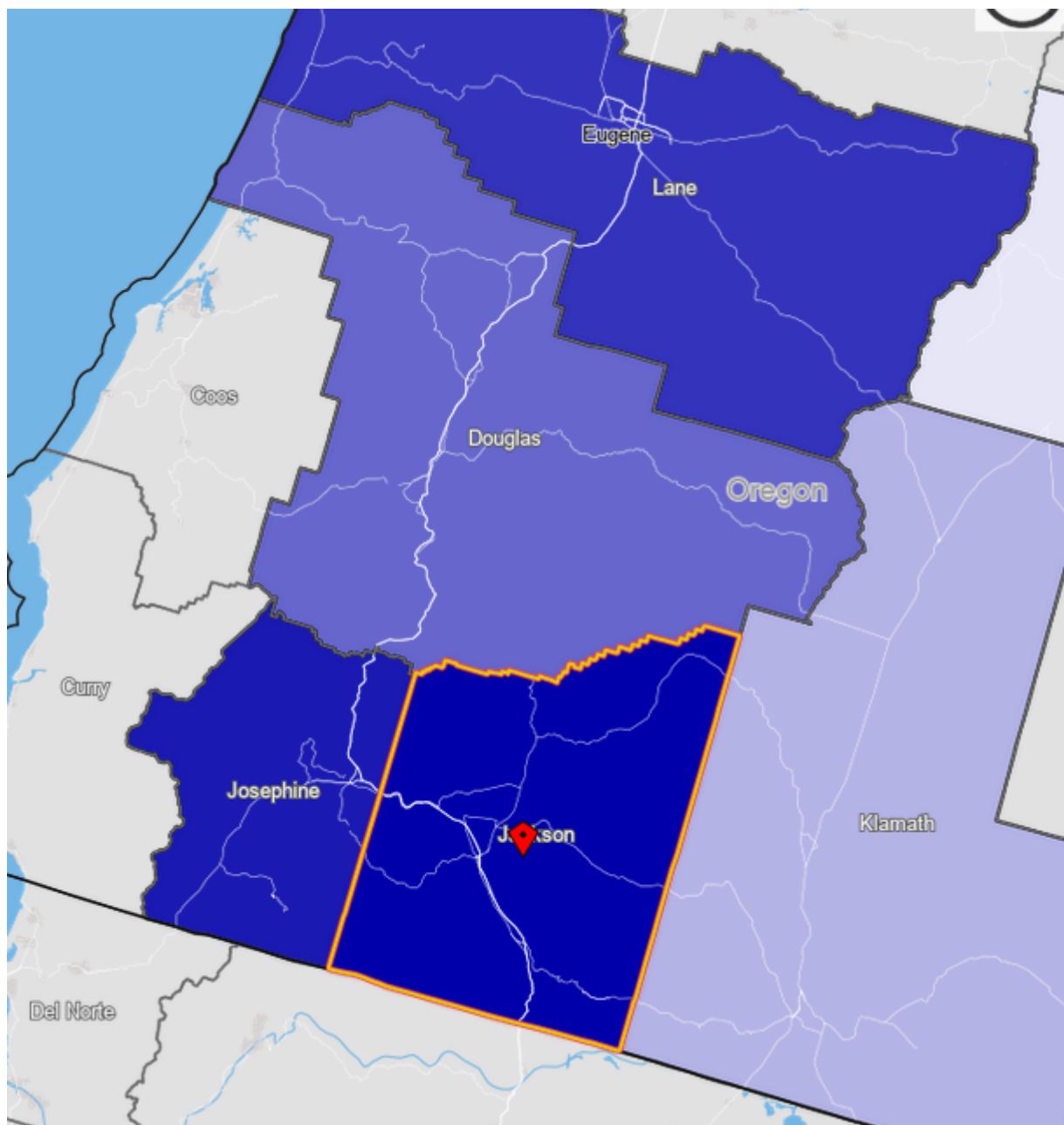
Source: U.S. Census Bureau American Community Survey 2019 5-year estimates, Table C16001.

Note: * Languages for persons who speak English less than very well.
Source: ACS tables B16004, C16001, PUMS; PEP estimates; Analysis by PRC, PSU

[Link to Table C16001](#) for all counties, including margins of error.

[Visualization](#) of language data by census tract within county.

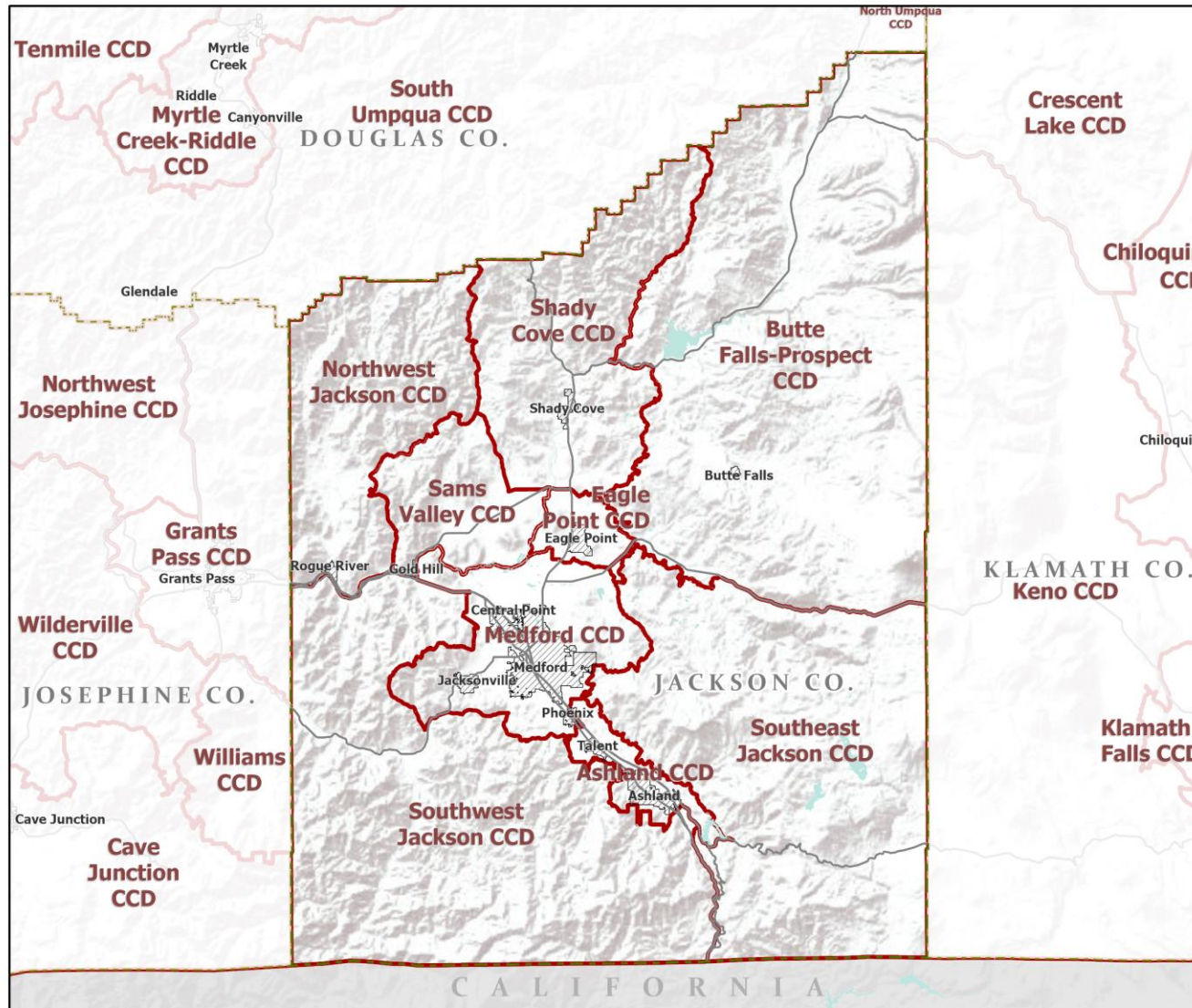
Jackson County Commute Flows



Jobs Counts by Counties Where Workers are Employed - All Jobs

	2018	
	Count	Share
All Counties	87,762	100.0%
Jackson County, OR	69,646	79.4%
Josephine County, OR	4,818	5.5%
Lane County, OR	1,838	2.1%
Multnomah County, OR	1,783	2.0%
Douglas County, OR	1,171	1.3%
Marion County, OR	1,135	1.3%
Washington County, OR	1,030	1.2%
Klamath County, OR	830	0.9%
Clackamas County, OR	682	0.8%
Deschutes County, OR	648	0.7%
All Other Locations	4,181	4.8%

County Subdivisions (CCDs): Jackson County



- Counties
- Incorporated Cities
- Highways
- County Subdivisions (CCDs)



Portland State University,
Population Research Center,
May 2021.
www.pdx.edu/prc

Sources: Esri, USGS, NOAA
State of Oregon GEO;
Oregon Dept. of
Transportation.



Jackson County Employment by Sector by Census County Division (1 of 2)

Sector	Oregon	County Total	Ashland CCD	Butte Falls-Prospect CCD	Eagle Point CCD	Medford CCD	NW Jackson CCD
Total, All Jobs*	1,904,601	90,045	12,421	401	1,900	71,455	1,170
Goods-Producing	18.6%	17.9%	14.6%	28.2%	17.9%	17.5%	35.0%
Natural Resources and Mining	2.7%	3.3%	3.5%	17.7%	4.4%	2.7%	6.9%
Construction	5.9%	6.1%	4.9%	10.0%	12.9%	5.8%	7.2%
Manufacturing	10.0%	8.5%	6.2%	0.5%	0.5%	9.0%	20.9%
Service Providing	81.4%	82.1%	85.4%	71.8%	82.1%	82.5%	65.0%
Trade, Transportation, and Utilities	18.6%	22.2%	18.4%	18.7%	25.3%	23.2%	15.4%
Information	2.0%	1.6%	2.5%	0.0%	0.1%	1.5%	1.0%
Financial Activities	4.6%	3.9%	2.9%	1.5%	2.6%	4.2%	3.0%
Professional and Business Services	13.4%	8.9%	5.9%	1.5%	8.7%	9.4%	8.1%
Education and Health Services	23.1%	25.1%	21.3%	27.9%	23.2%	26.4%	21.8%
Leisure and Hospitality	11.4%	13.1%	27.2%	17.2%	15.6%	10.7%	8.7%
Other Services	4.2%	3.8%	4.5%	3.2%	4.5%	3.4%	3.9%
Public Administration	4.2%	3.5%	2.7%	1.7%	2.2%	3.8%	3.1%

Continued on next slide

Source: U.S. Census Bureau, LEHD Origin-Destination Employment Statistics, 2018 Q2

* Jobs covered by unemployment insurance and federal workers.

Jackson County Employment by Sector by Census County Division (2 of 2)

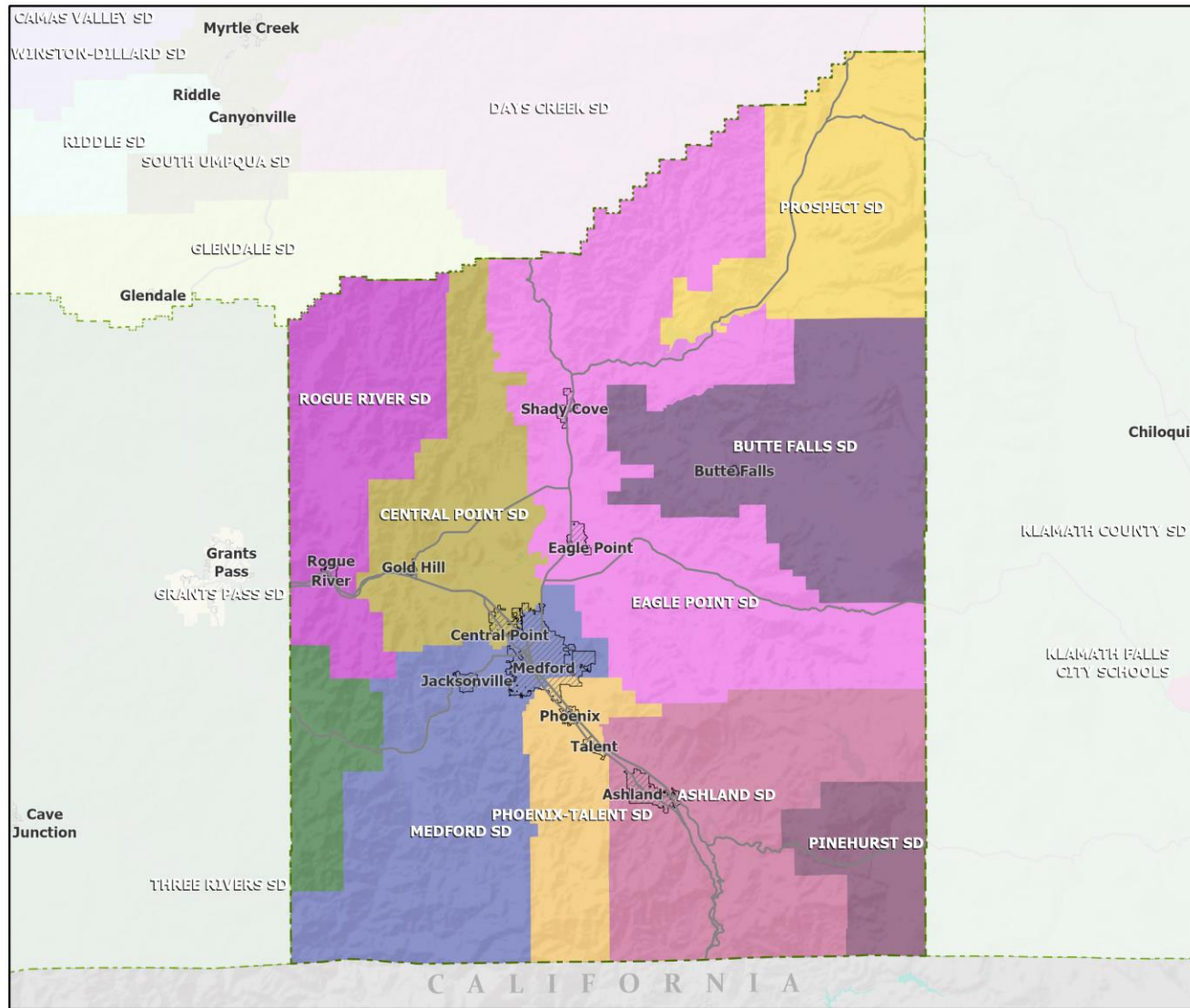
Continued from previous slide

Sector	Oregon	County Total	Sams Valley CCD	Shady Cove CCD	SE Jackson CCD	SW Jackson CCD
Total, All Jobs*	1,904,601	90,045	641	517	259	1,281
Goods-Producing	18.6%	17.9%	28.1%	21.7%	32.4%	43.7%
Natural Resources and Mining	2.7%	3.3%	3.9%	9.1%	22.4%	20.4%
Construction	5.9%	6.1%	11.4%	10.8%	7.3%	14.7%
Manufacturing	10.0%	8.5%	12.8%	1.7%	2.7%	8.7%
Service Providing	81.4%	82.1%	71.9%	78.3%	67.6%	56.3%
Trade, Transportation, and Utilities	18.6%	22.2%	22.3%	22.4%	13.5%	6.8%
Information	2.0%	1.6%	0.6%	0.0%	0.0%	2.4%
Financial Activities	4.6%	3.9%	1.7%	5.0%	1.9%	4.3%
Professional and Business Services	13.4%	8.9%	5.3%	11.0%	11.6%	14.5%
Education and Health Services	23.1%	25.1%	18.3%	8.1%	9.3%	7.4%
Leisure and Hospitality	11.4%	13.1%	11.7%	17.2%	27.8%	6.6%
Other Services	4.2%	3.8%	11.2%	11.4%	3.1%	13.2%
Public Administration	4.2%	3.5%	0.8%	3.1%	0.4%	1.1%

Source: U.S. Census Bureau, LEHD Origin-Destination Employment Statistics, 2018 Q2

* Jobs covered by unemployment insurance and federal workers.

School Districts: Jackson County



- Counties
- Incorporated Cities
- Highways

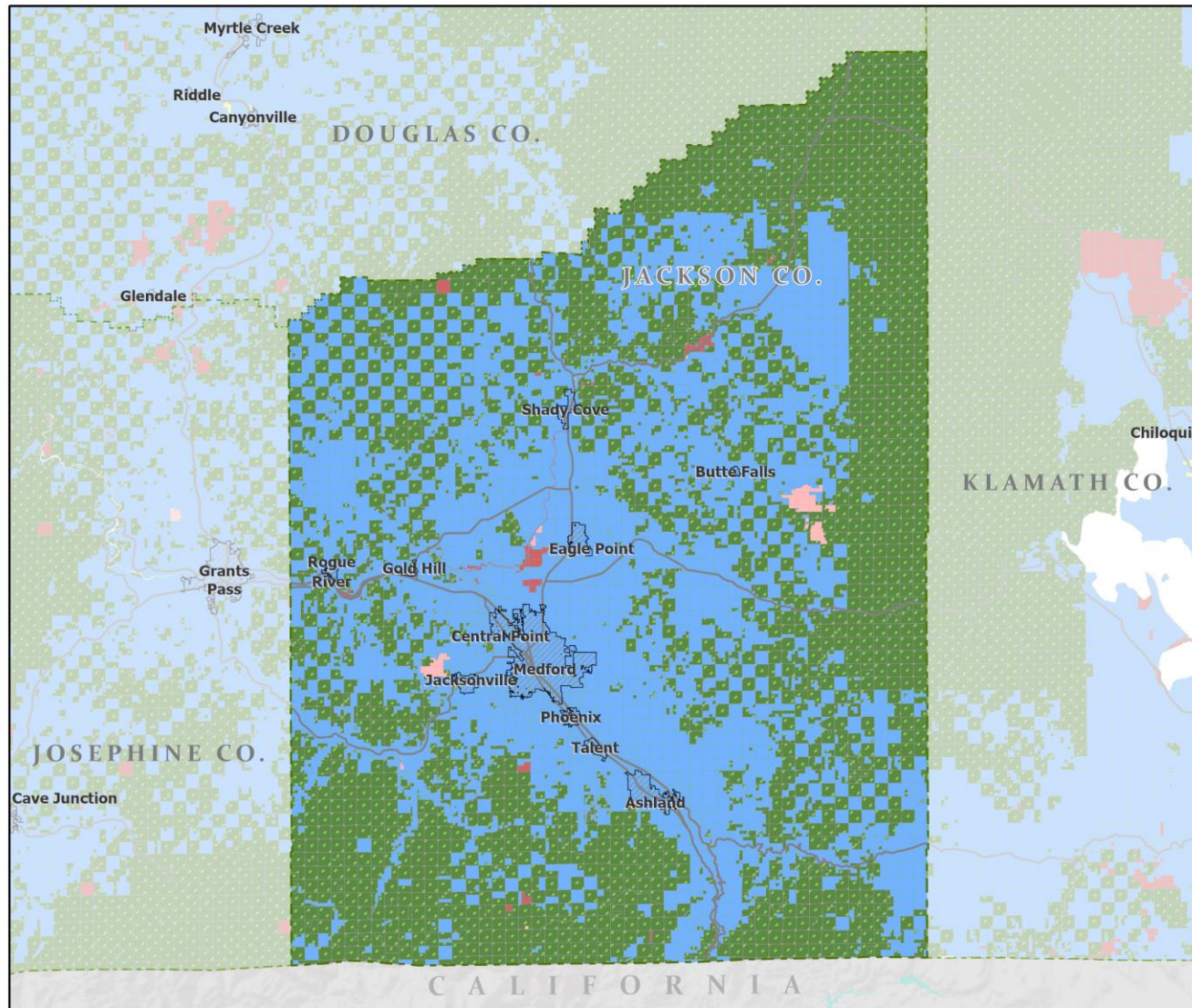


Portland State University,
Population Research Center,
May 2021.
www.pdx.edu/prc

Sources: Esri, USGS, NOAA
State of Oregon GEO;
Oregon Dept. of
Transportation.



Land Ownership: Jackson County

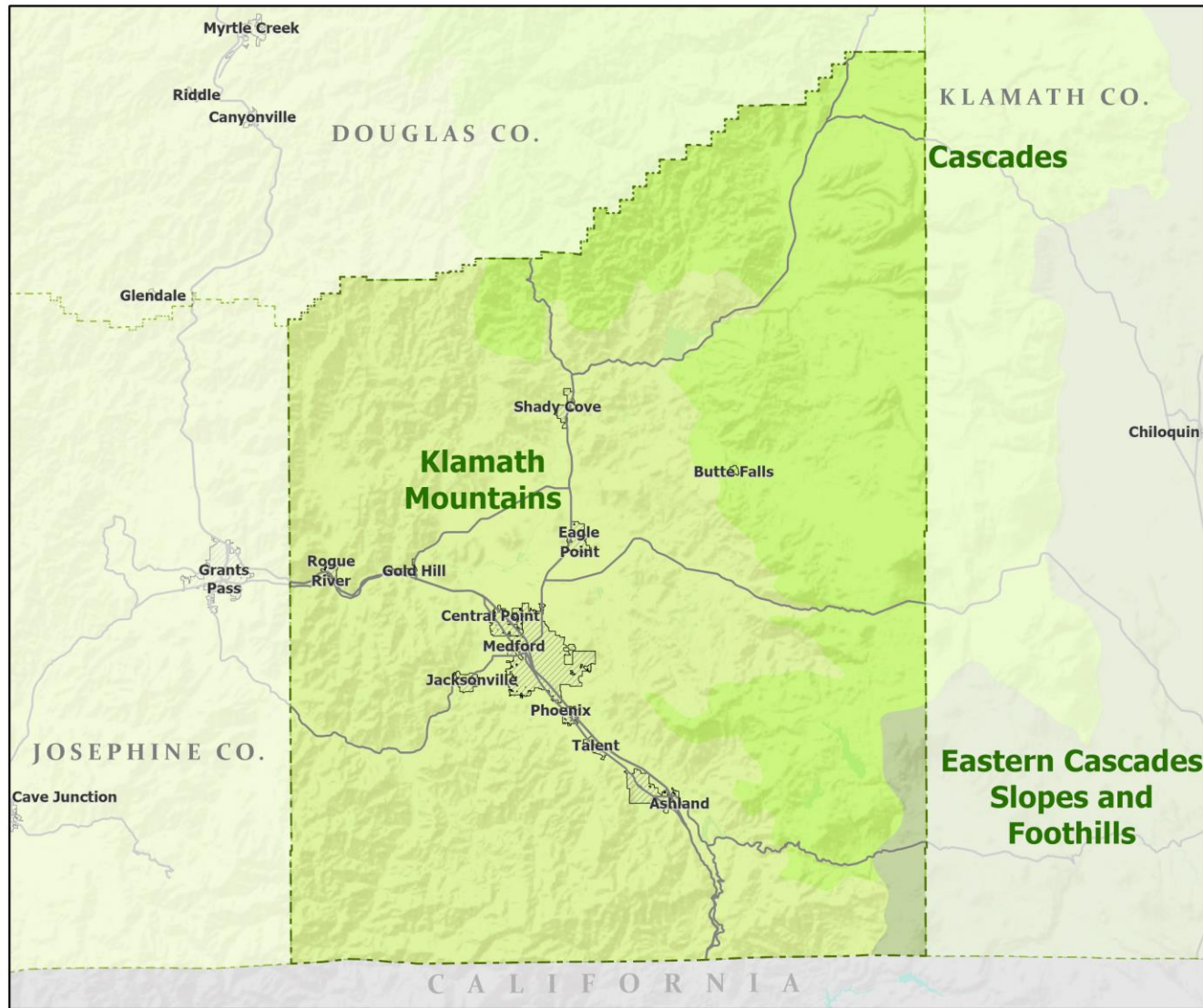


Portland State University,
Population Research Center,
May 2021.
www.pdx.edu/prc

Sources: Esri, USGS, NOAA
State of Oregon GEO;
Oregon Dept. of
Transportation.



Ecoregions: Jackson County



- Counties
- Incorporated Cities
- Highways

LEVEL III ECOREGIONS OF OREGON (2006)

- Cascades
- Eastern Cascades Slopes and Foothills
- Klamath Mountains

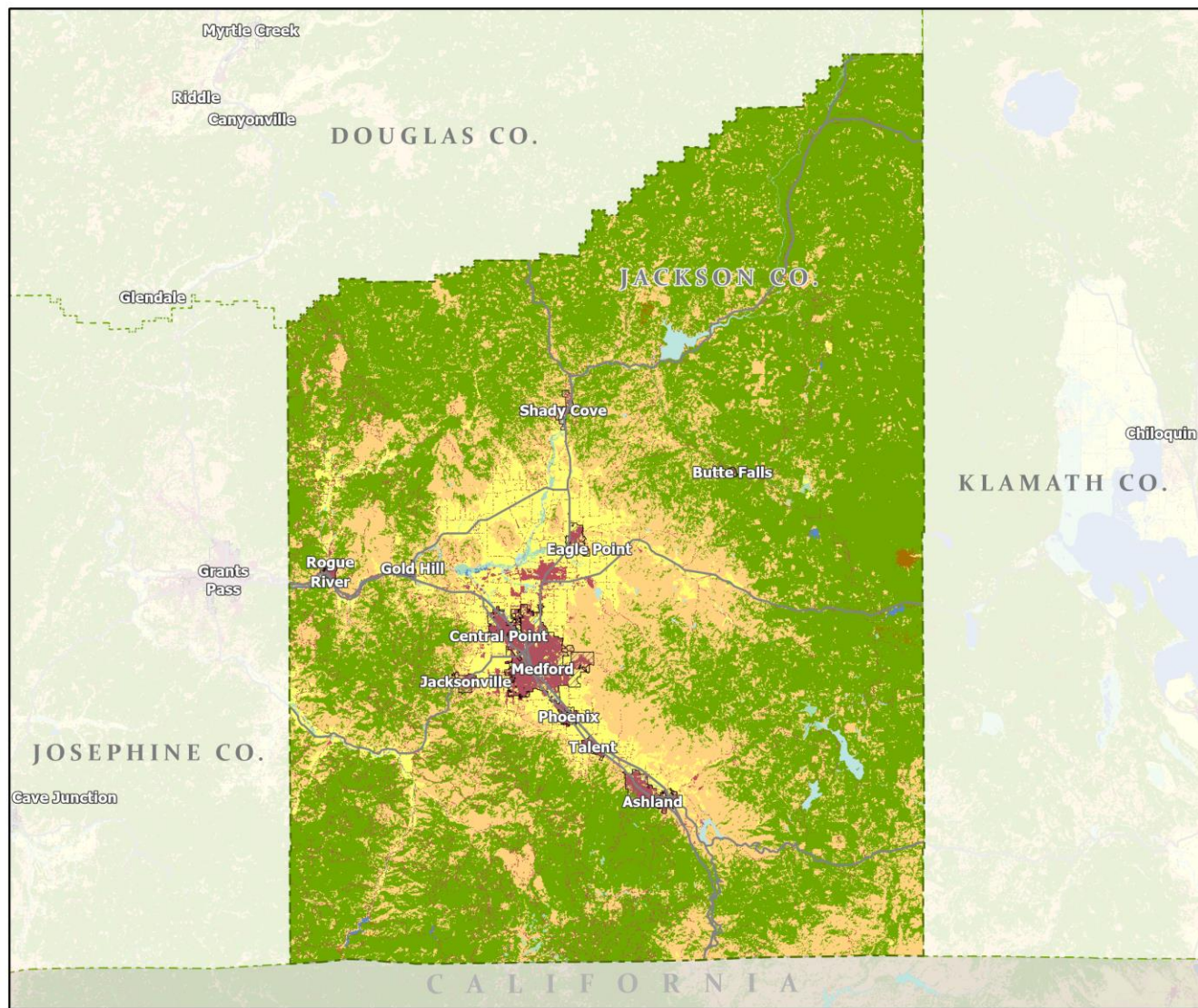


Portland State University,
Population Research Center,
May 2021.
www.pdx.edu/prc

Sources: Esri, USGS, NOAA
State of Oregon GEO;
Oregon Dept. of
Transportation.



Land Cover: Jackson County



- Counties
- Incorporated Cities
- Highways

NATIONAL LAND COVER

- Developed
- Cultivated Crops/Pasture/Hay
- Barren Land
- Forest
- Grasslands/Scrub/Sedge
- Lichens/Moss
- Wetlands
- Perennial Snow/Ice
- Open Water



Portland State University,
Population Research Center,
May 2021.
www.pdx.edu/prc

Sources: Esri, USGS, NOAA
State of Oregon GEO;
Oregon Dept. of
Transportation.

0 60 Miles