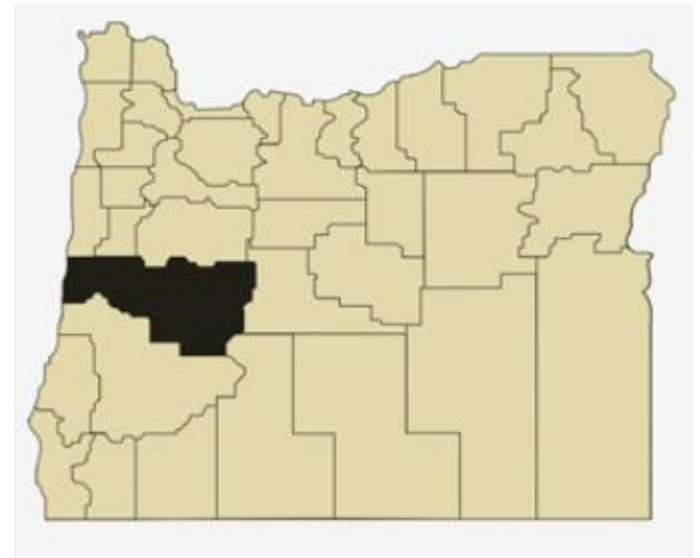


Lane County Overview

House and Senate Committees on Redistricting

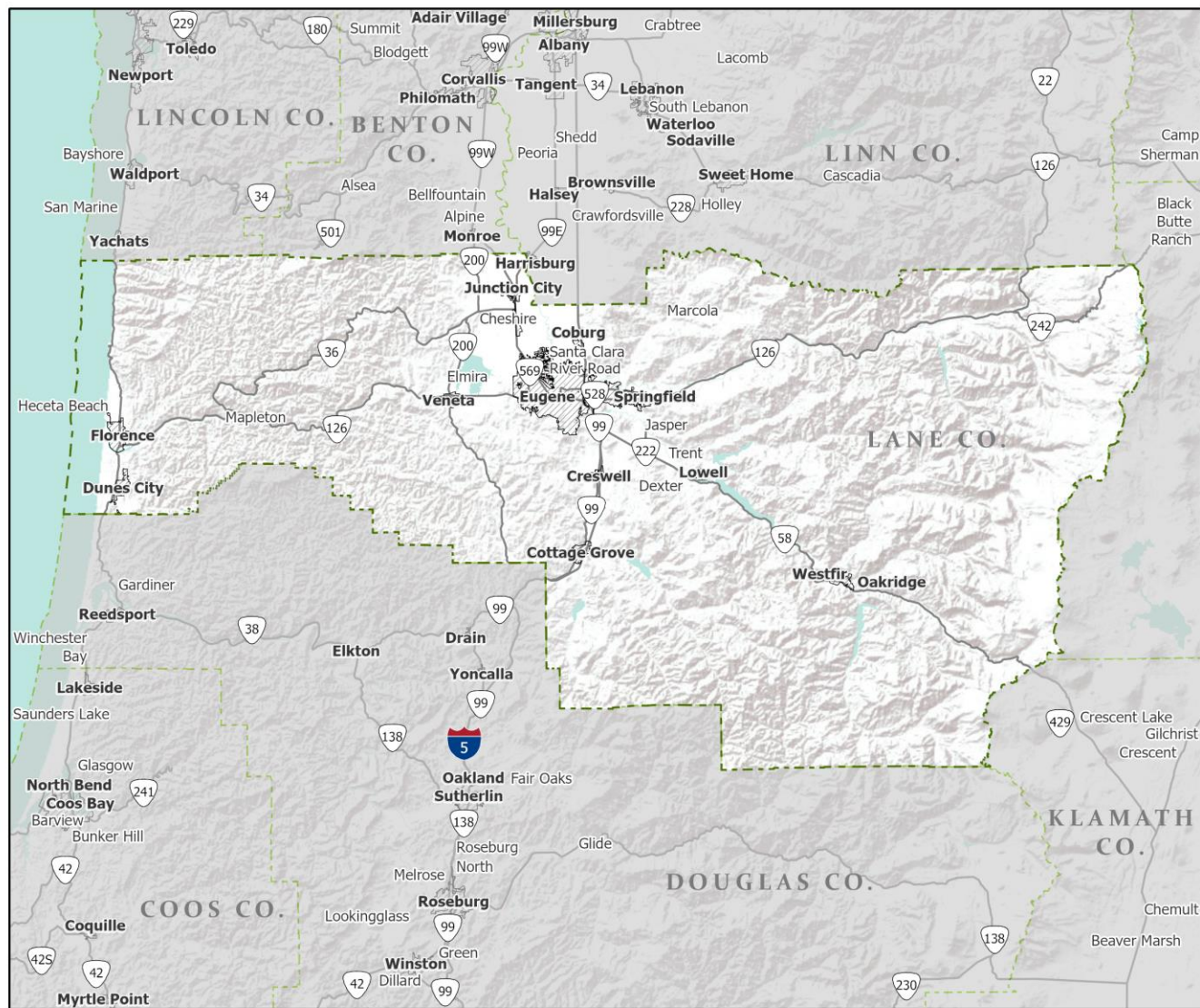
June 2, 2021

| | |
|----------------------------------|---------|
| July 1, 2020 population estimate | 381,365 |
| Population rank | 4th |
| Share of state population | 8.9% |
| Density (per square mile) | 82.5 |
| Density rank | 8th |
| Area (square miles) | 4,620 |
| Area rank | 6th |
| Share of state area | 4.7% |



Sources: PSU Population Research Center; Oregon Blue Book.

Highways: Lane County



-  Counties
-  Incorporated Cities
-  Highways

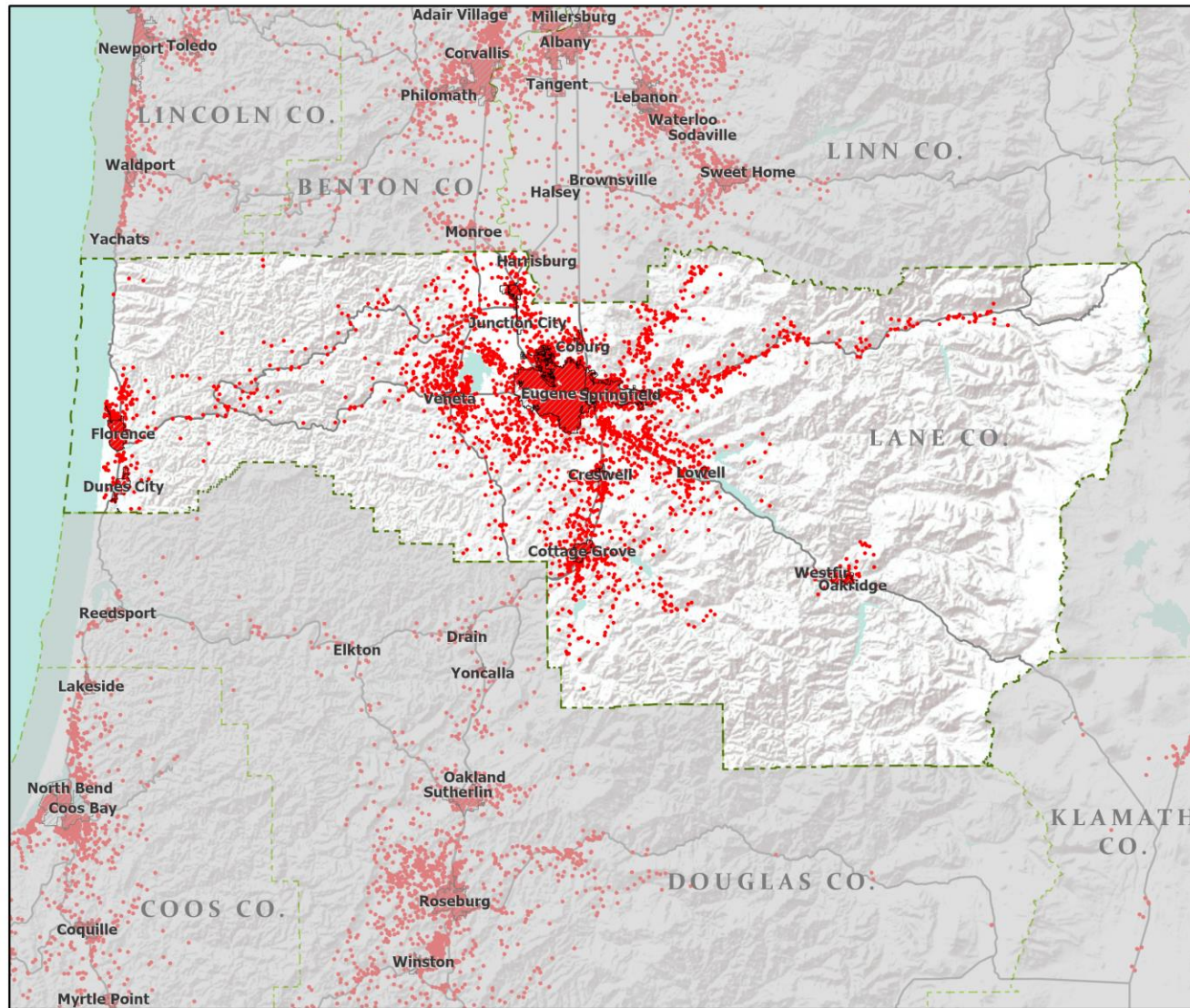


Portland State University,
Population Research Center,
May 2021.
www.pdx.edu/prc

Sources: Esri, USGS, NOAA
State of Oregon GEO;
Oregon Dept. of
Transportation.



Population: Lane County



- Counties
- Incorporated Cities
- Highways
- 2010 POPULATION
- 1 Dot = 25 persons

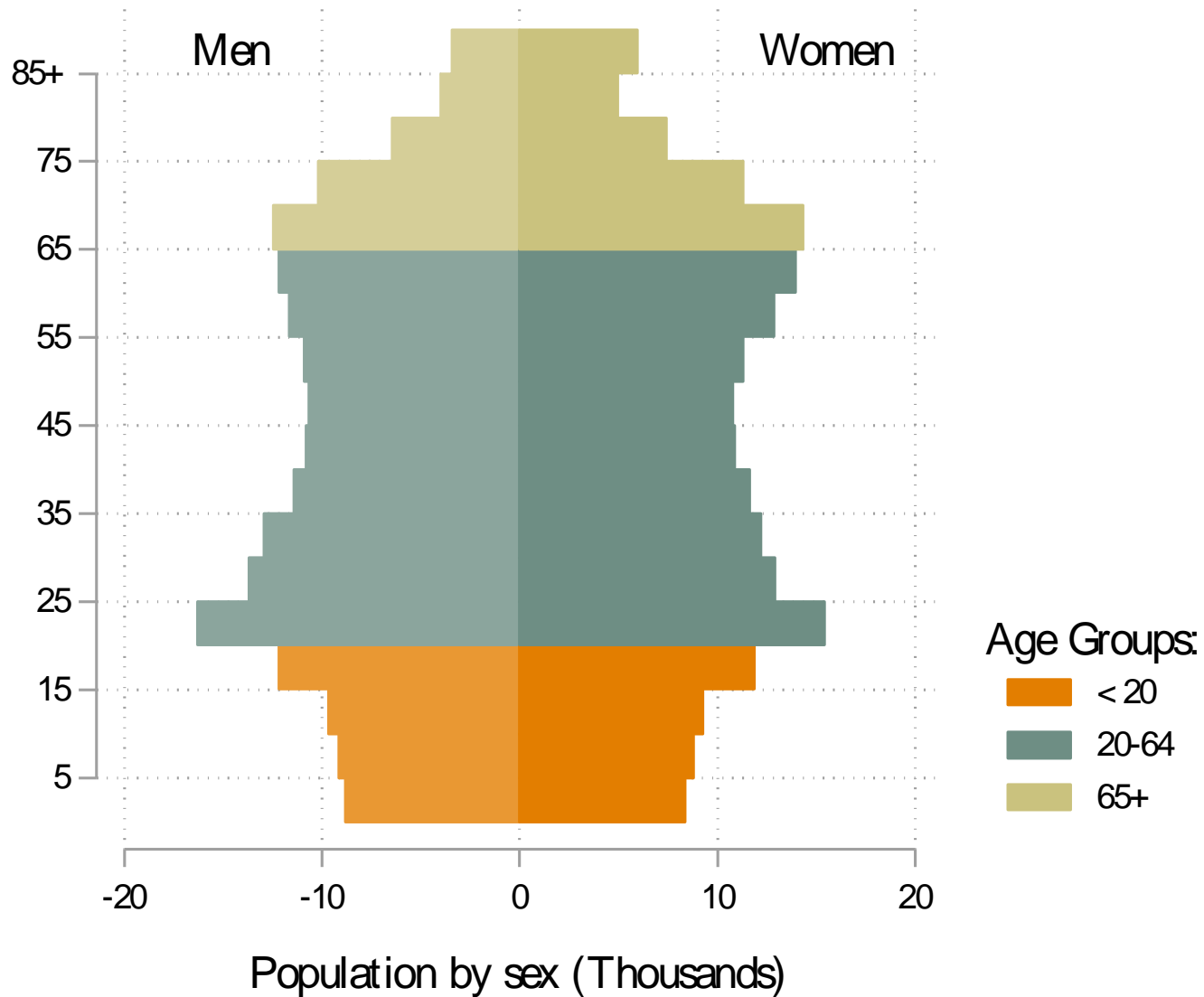


Portland State University,
Population Research Center,
May 2021.
www.pdx.edu/prc

Sources: Esri, USGS, NOAA
State of Oregon GEO;
Oregon Dept. of
Transportation.

0 80 Miles

Lane population by age & sex: 2020



Note: Men plotted on negative axis

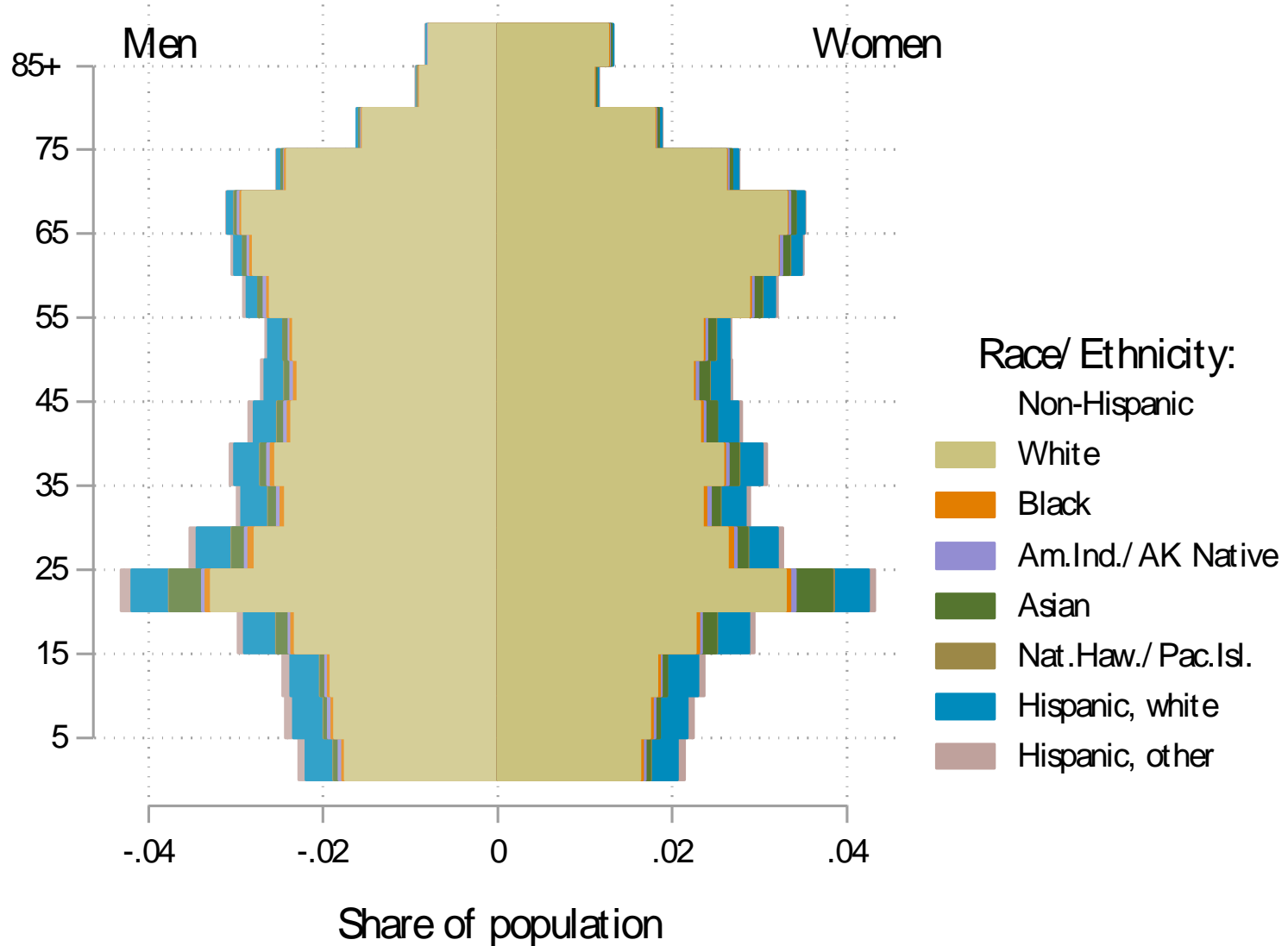
Source: Estimates by Population Research Center, PSU

Age Distribution, Lane County

| Age Group | 2020 Estimate | 2020 Percent of Total | Oregon 2020 Percent of Total |
|------------------|------------------|-----------------------------|---------------------------------------|
| Total population | 381,365 | 100.0% | 100.0% |
| Under age 5 | 17,197 | 4.5% | 5.4% |
| Age 5 to 17 | 48,157 | 12.6% | 14.9% |
| Age 18 to 64 | 235,427 | 61.7% | 61.1% |
| Age 65 and over | 80,584 | 21.1% | 18.6% |

Source: PSU Population Research Center July 1, 2020 Population Estimates

Lane County population by age & sex: 2019



Note: Men plotted on negative axis

Source: Estimates by US Census Bureau

Race and Ethnicity, Lane County

| | 2010 Census | 2010 Census Percent | 2015-19 ACS Estimate | 2015-19 ACS Percent | Oregon 2015-19 ACS Percent |
|--|----------------|---------------------------|----------------------------|---------------------------|-------------------------------------|
| HISPANIC OR LATINO AND RACE | | | | | |
| Total population | 351,715 | 100.0% | 373,340 | 100.0% | 100.0% |
| Hispanic or Latino | 26,167 | 7.4% | 33,109 | 8.9%* | 13.0% |
| Not Hispanic or Latino | 325,548 | 92.6% | 340,231 | 91.1%* | 87.0% |
| White alone | 297,808 | 84.7% | 305,453 | 81.8%* | 75.7% |
| Black or African American alone | 3,102 | 0.9% | 3,754 | 1.0%* | 1.8% |
| American Indian and Alaska Native alone | 3,418 | 1.0% | 3,311 | 0.9% | 0.9% |
| Asian alone | 8,169 | 2.3% | 9,936 | 2.7%* | 4.3% |
| Native Hawaiian and Other Pacific Islander alone | 732 | 0.2% | 879 | 0.2% | 0.4% |
| Some Other Race alone | 514 | 0.1% | 771 | 0.2% | 0.1% |
| Two or More Races | 11,805 | 3.4% | 16,127 | 4.3%* | 3.7% |

| | 2010 Census | 2010 Census Percent | 2015-19 ACS Estimate | 2015-19 ACS Percent | Oregon 2015-19 ACS Percent |
|--|----------------|---------------------------|----------------------------|---------------------------|-------------------------------------|
| RACE ALONE OR IN COMBINATION WITH ONE OR MORE OTHER RACES** | | | | | |
| White | 324,567 | 92.3% | 342,050 | 91.6%* | 88.8% |
| Black or African American | 6,203 | 1.8% | 8,011 | 2.1%* | 2.9% |
| American Indian and Alaska Native | 10,868 | 3.1% | 12,642 | 3.4%* | 3.1% |
| Asian | 12,484 | 3.5% | 16,700 | 4.5%* | 6.0% |
| Native Hawaiian and Other Pacific Islander | 1,790 | 0.5% | 2,839 | 0.8%* | 0.8% |
| Some Other Race | 11,803 | 3.4% | 13,105 | 3.5% | 3.6% |

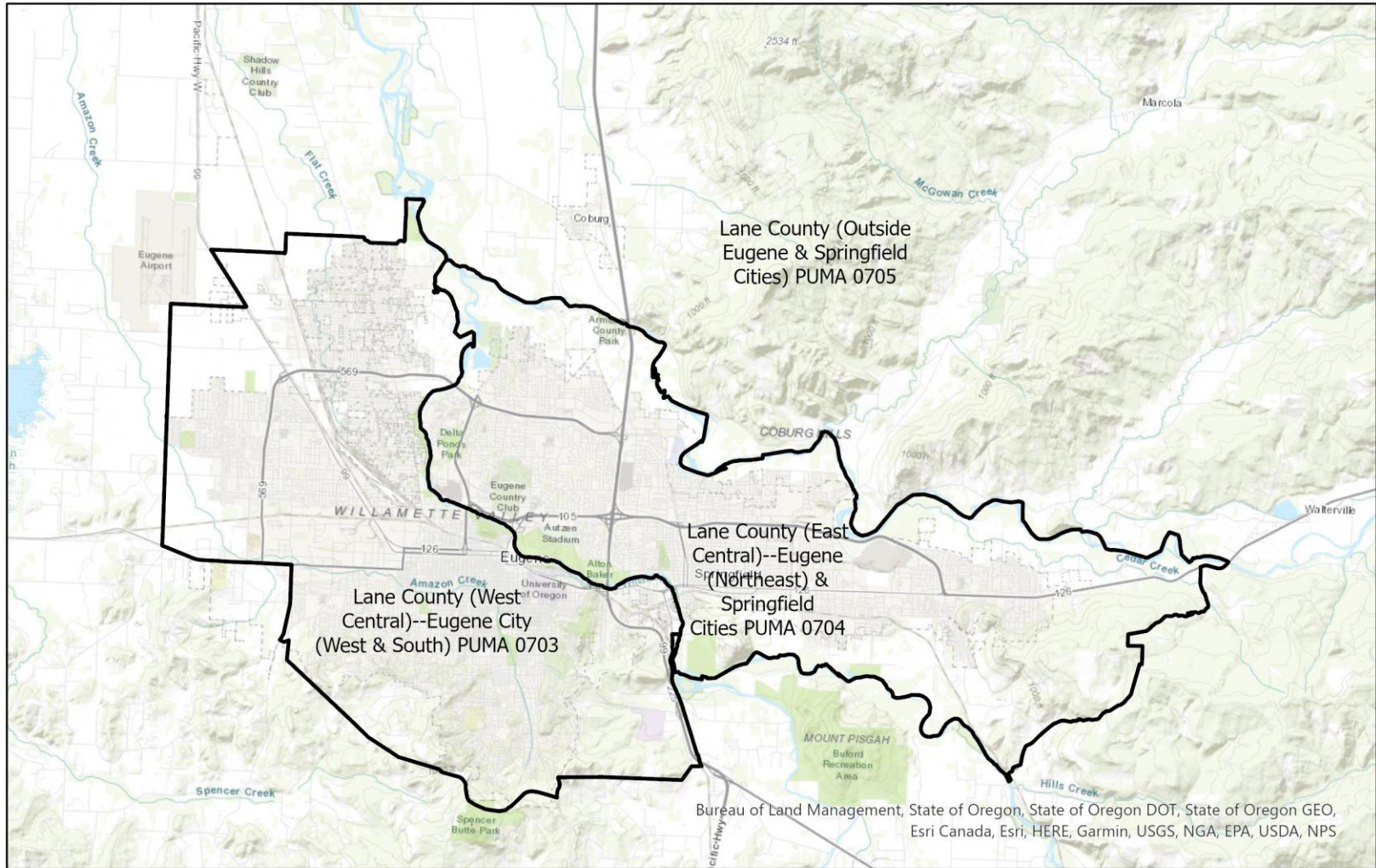
Source: U.S. Census Bureau, 2010 Census and 2019 5-year American Community Survey estimates.

* Difference between 2010 Census and 2015-19 ACS is statistically significant at the 90% confidence level.

** Total may add to more than 100% due to persons identifying as more than one race.

Lane County Public Use Microdata Areas

(Groups of census tracts with 100,000 population minimum)



Source: U.S. Census Bureau.

Prepared by Portland State University
Population Research Center.

Race and Ethnicity, Lane County (West Central)— Eugene City (West & South) PUMA 0703

| HISPANIC OR LATINO AND RACE | 2010 Census | 2010 Census Percent | 2015-19 ACS Estimate | 2015-19 ACS Percent | Oregon 2015-19 ACS Percent |
|--|----------------|---------------------------|----------------------------|---------------------------|-------------------------------------|
| Total population | 142,064 | 100.0% | 152,428 | 100.0% | 100.0% |
| Hispanic or Latino | 11,643 | 8.2% | 15,946 | 10.5%* | 13.0% |
| Not Hispanic or Latino | 130,421 | 91.8% | 136,482 | 89.5%* | 87.0% |
| White alone | 116,968 | 82.3% | 120,212 | 78.9%* | 75.7% |
| Black or African American alone | 1,584 | 1.1% | 2,005 | 1.3% | 1.8% |
| American Indian and Alaska Native alone | 1,266 | 0.9% | 1,056 | 0.7% | 0.9% |
| Asian alone | 4,730 | 3.3% | 4,783 | 3.1% | 4.3% |
| Native Hawaiian and Other Pacific Islander alone | 306 | 0.2% | 287 | 0.2% | 0.4% |
| Some Other Race alone | 268 | 0.2% | 435 | 0.3% | 0.1% |
| Two or More Races | 5,299 | 3.7% | 7,704 | 5.1%* | 3.7% |

| RACE ALONE OR IN COMBINATION WITH ONE OR MORE OTHER RACES** | 2010 Census | 2010 Census Percent | 2015-19 ACS Estimate | 2015-19 ACS Percent | Oregon 2015-19 ACS Percent |
|--|----------------|---------------------------|----------------------------|---------------------------|-------------------------------------|
| White | 128,845 | 90.7% | 137,984 | 90.5% | 88.8% |
| Black or African American | 3,200 | 2.3% | 4,379 | 2.9%* | 2.9% |
| American Indian and Alaska Native | 4,255 | 3.0% | 5,270 | 3.5% | 3.1% |
| Asian | 7,044 | 5.0% | 8,329 | 5.5%* | 6.0% |
| Native Hawaiian and Other Pacific Islander | 828 | 0.6% | 966 | 0.6% | 0.8% |
| Some Other Race | 5,204 | 3.7% | 6,030 | 4.0% | 3.6% |

Source: U.S. Census Bureau, 2010 Census and 2019 5-year American Community Survey estimates. PUMAs are Public Use Microdata Areas, groups of census tracts with a population of 100,000 or greater.

* Difference between 2010 Census and 2015-19 ACS is statistically significant at the 90% confidence level.

** Total may add to more than 100% due to persons identifying as more than one race.

Race and Ethnicity, Lane County (East Central)— Eugene (Northeast) & Springfield Cities PUMA 0704

| | 2010 Census | 2010 Census Percent | 2015-19 ACS Estimate | 2015-19 ACS Percent | Oregon 2015-19 ACS Percent |
|--|----------------|---------------------------|----------------------------|---------------------------|-------------------------------------|
| HISPANIC OR LATINO AND RACE | | | | | |
| Total population | 104,280 | 100.0% | 111,069 | 100.0% | 100.0% |
| Hispanic or Latino | 9,580 | 9.2% | 10,304 | 9.3%* | 13.0% |
| Not Hispanic or Latino | 94,700 | 90.8% | 100,765 | 90.7%* | 87.0% |
| White alone | 85,955 | 82.4% | 88,549 | 79.7%* | 75.7% |
| Black or African American alone | 1,142 | 1.1% | 1,275 | 1.1% | 1.8% |
| American Indian and Alaska Native alone | 1,043 | 1.0% | 913 | 0.8% | 0.9% |
| Asian alone | 2,590 | 2.5% | 4,239 | 3.8%* | 4.3% |
| Native Hawaiian and Other Pacific Islander alone | 284 | 0.3% | 439 | 0.4%* | 0.4% |
| Some Other Race alone | 140 | 0.1% | 151 | 0.1% | 0.1% |
| Two or More Races | 3,546 | 3.4% | 5,199 | 4.7%* | 3.7% |

| | 2010 Census | 2010 Census Percent | 2015-19 ACS Estimate | 2015-19 ACS Percent | Oregon 2015-19 ACS Percent |
|--|----------------|---------------------------|----------------------------|---------------------------|-------------------------------------|
| RACE ALONE OR IN COMBINATION WITH ONE OR MORE OTHER RACES** | | | | | |
| White | 94,839 | 90.9% | 99,173 | 89.3%* | 88.8% |
| Black or African American | 2,208 | 2.1% | 2,611 | 2.4% | 2.9% |
| American Indian and Alaska Native | 3,196 | 3.1% | 3,613 | 3.3% | 3.1% |
| Asian | 3,912 | 3.8% | 6,679 | 6.0%* | 6.0% |
| Native Hawaiian and Other Pacific Islander | 605 | 0.6% | 1,179 | 1.1%* | 0.8% |
| Some Other Race | 4,562 | 4.4% | 4,518 | 4.1% | 3.6% |

Source: U.S. Census Bureau, 2010 Census and 2019 5-year American Community Survey estimates.
PUMAs are Public Use Microdata Areas, groups of census tracts with a population of 100,000 or greater.

* Difference between 2010 Census and 2015-19 ACS is statistically significant at the 90% confidence level.

** Total may add to more than 100% due to persons identifying as more than one race.

Race and Ethnicity, Lane County (Outside Eugene & Springfield Cities)-- PUMA 0705

| HISPANIC OR LATINO AND RACE | 2010 Census | 2010 Census Percent | 2015-19 ACS Estimate | 2015-19 ACS Percent | Oregon 2015-19 ACS Percent |
|--|----------------|---------------------------|----------------------------|---------------------------|-------------------------------------|
| Total population | 105,371 | 100.0% | 109,843 | 100.0% | 100.0% |
| Hispanic or Latino | 4,944 | 4.7% | 6,859 | 6.2%* | 13.0% |
| Not Hispanic or Latino | 100,427 | 95.3% | 102,984 | 93.8%* | 87.0% |
| White alone | 94,885 | 90.0% | 96,692 | 88.0%* | 75.7% |
| Black or African American alone | 376 | 0.4% | 474 | 0.4% | 1.8% |
| American Indian and Alaska Native alone | 1,109 | 1.1% | 1,342 | 1.2% | 0.9% |
| Asian alone | 849 | 0.8% | 914 | 0.8% | 4.3% |
| Native Hawaiian and Other Pacific Islander alone | 142 | 0.1% | 153 | 0.1% | 0.4% |
| Some Other Race alone | 106 | 0.1% | 185 | 0.2% | 0.1% |
| Two or More Races | 2,960 | 2.8% | 3,224 | 2.9% | 3.7% |

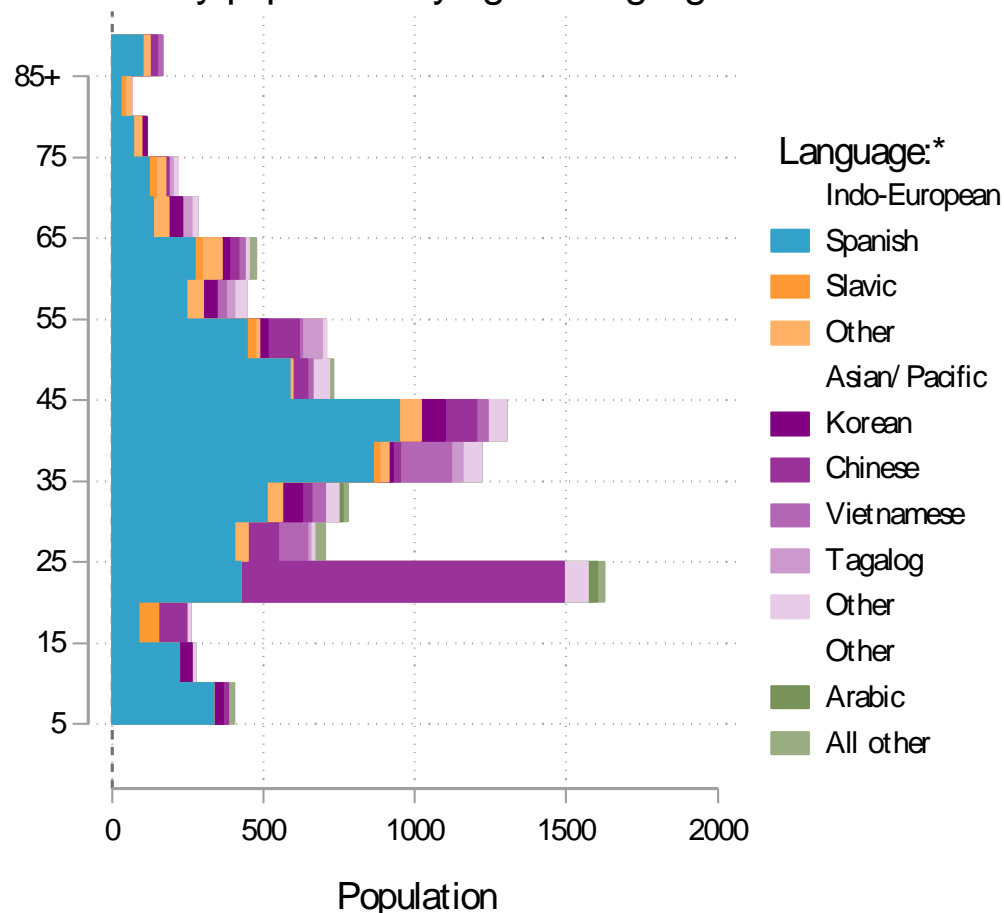
| RACE ALONE OR IN COMBINATION WITH ONE OR MORE OTHER RACES** | 2010 Census | 2010 Census Percent | 2015-19 ACS Estimate | 2015-19 ACS Percent | Oregon 2015-19 ACS Percent |
|--|----------------|---------------------------|----------------------------|---------------------------|-------------------------------------|
| White | 100,883 | 95.7% | 104,893 | 95.5% | 88.8% |
| Black or African American | 795 | 0.8% | 1,021 | 0.9% | 2.9% |
| American Indian and Alaska Native | 3,417 | 3.2% | 3,759 | 3.4% | 3.1% |
| Asian | 1,528 | 1.5% | 1,692 | 1.5% | 6.0% |
| Native Hawaiian and Other Pacific Islander | 357 | 0.3% | 694 | 0.6% | 0.8% |
| Some Other Race | 2,037 | 1.9% | 2,557 | 2.3% | 3.6% |

Source: U.S. Census Bureau, 2010 Census and 2019 5-year American Community Survey estimates. PUMAs are Public Use Microdata Areas, groups of census tracts with a population of 100,000 or greater.

* Difference between 2010 Census and 2015-19 ACS is statistically significant at the 90% confidence level.

** Total may add to more than 100% due to persons identifying as more than one race.

Lane County population by age & language: 2019



Note: * Languages for persons who speak English less than very well.

Source: ACS tables B16004, C16001, PUMS, PEP estimates, Analysis by PRC, PSU

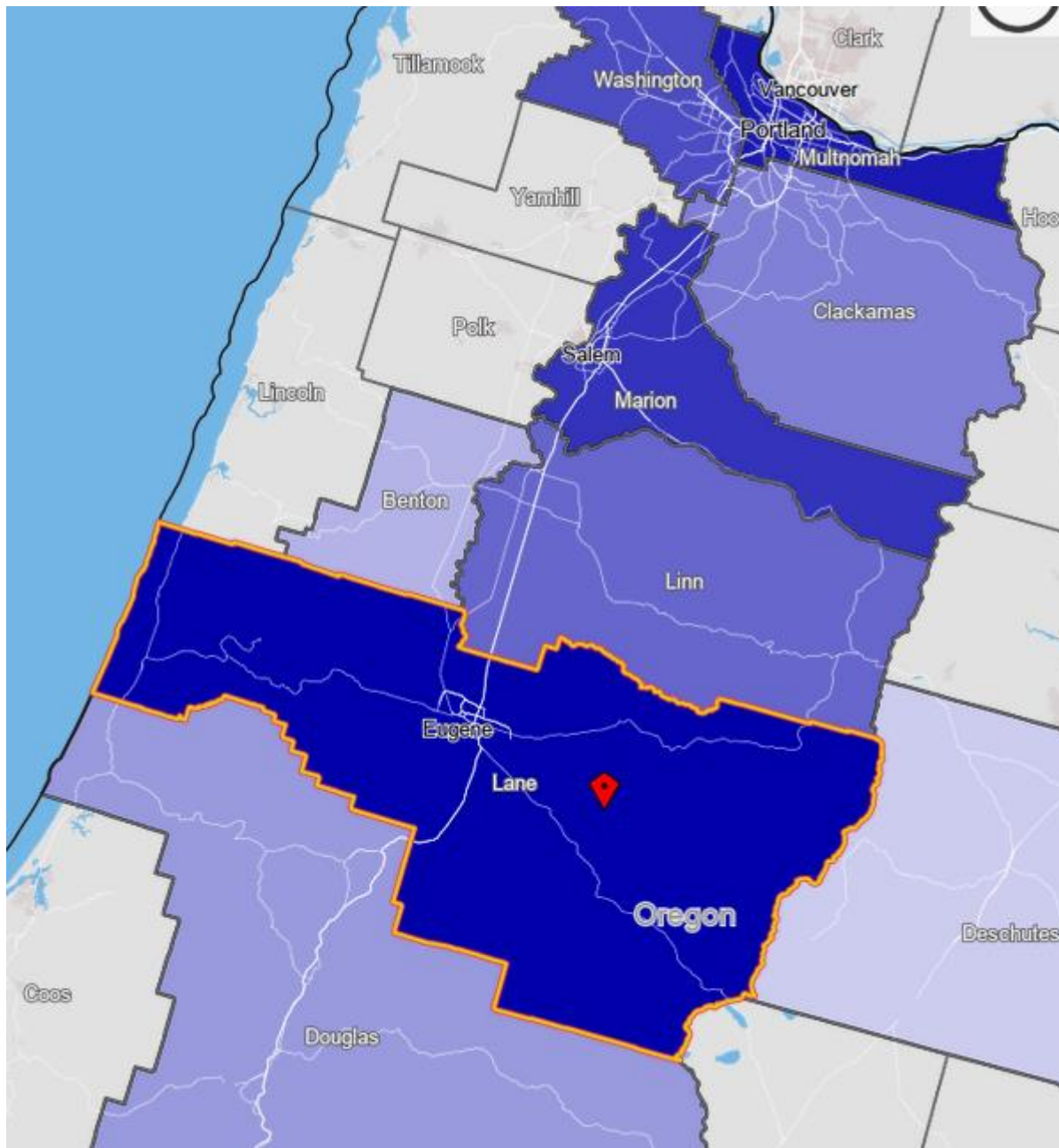
[Link to Table C16001](#) for all counties, including margins of error.

[Visualization](#) of language data by census tract within county.

Language Spoken at Home Speak English less than "very well" Lane County

| Languages | Estimate |
|--|----------|
| Total Population Age 5 and Older | 354,917 |
| Speaking English less than "very well" | 8,765 |
| Spanish | 5,037 |
| Russian, Polish, or other Slavic languages | 117 |
| Other Indo-European languages | 497 |
| Korean | 394 |
| Chinese (incl. Cantonese and Mandarin) | 1,715 |
| Vietnamese | 204 |
| Tagalog (incl. Filipino) | 137 |
| Other Asian and Pacific Island languages | 438 |
| Arabic | 156 |
| Other languages | 70 |

Source: U.S. Census Bureau American Community Survey 2019 5-year estimates, Table C16001.

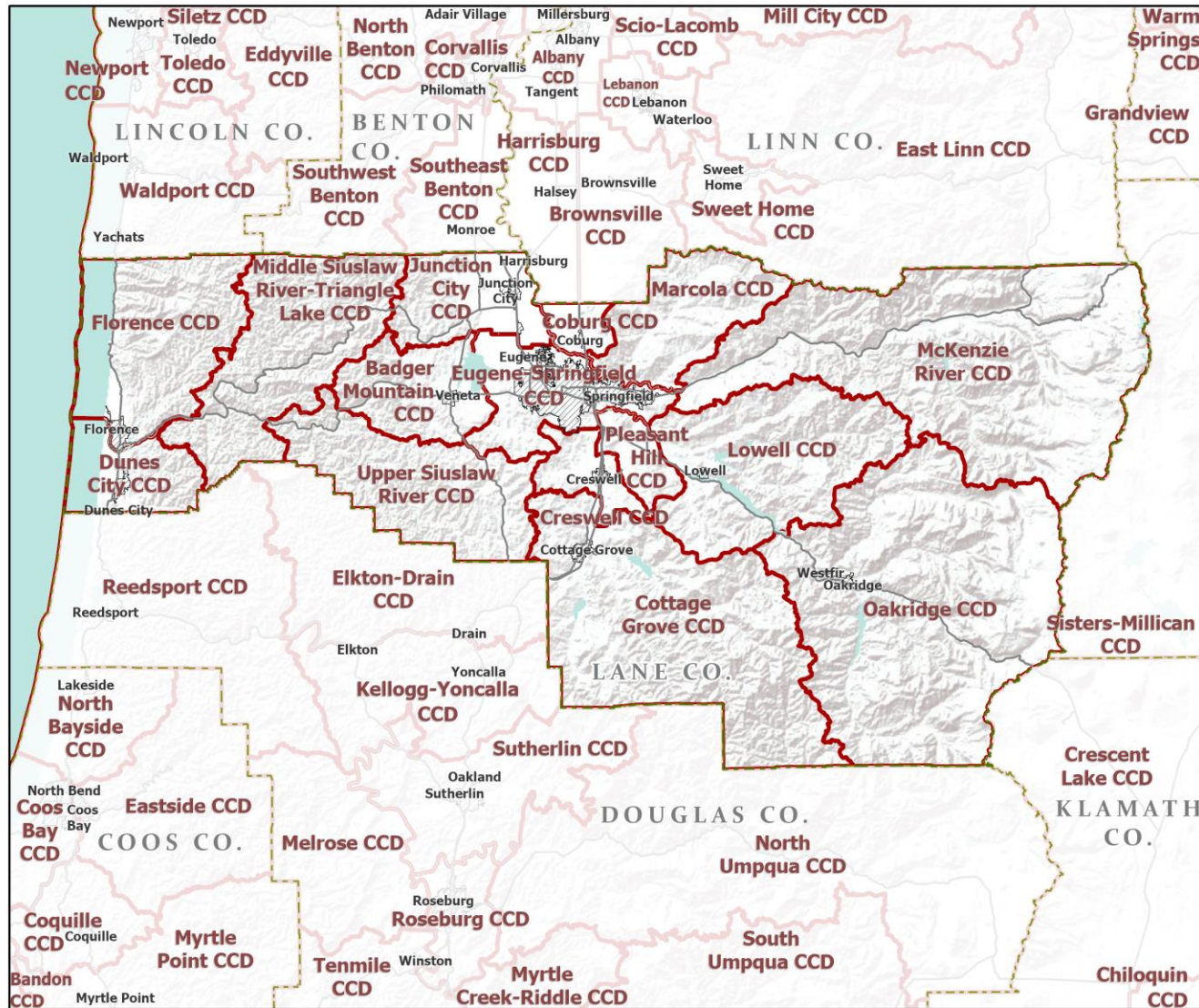


Lane County Commute Flows

Jobs Counts by Counties Where Workers are Employed - All Jobs

| | 2018 | |
|---------------------------------------|---------|--------|
| | Count | Share |
| All Counties | 157,180 | 100.0% |
| Lane County, OR | 123,066 | 78.3% |
| Multnomah County, OR | 5,830 | 3.7% |
| Marion County, OR | 4,714 | 3.0% |
| Washington County, OR | 3,683 | 2.3% |
| Linn County, OR | 3,235 | 2.1% |
| Clackamas County, OR | 2,244 | 1.4% |
| Douglas County, OR | 2,216 | 1.4% |
| Benton County, OR | 1,966 | 1.3% |
| Deschutes County, OR | 1,813 | 1.2% |
| Jackson County, OR | 1,046 | 0.7% |
| All Other Locations | 7,367 | 4.7% |

County Subdivisions (CCDs): Lane County



- Counties
- Incorporated Cities
- Highways
- County Subdivisions (CCDs)



Portland State University,
Population Research Center,
May 2021.
www.pdx.edu/prc

Sources: Esri, USGS, NOAA
State of Oregon GEO;
Oregon Dept. of
Transportation.



Lane County Employment by Sector by Census County Division (1 of 3)

| Sector | Oregon | County Total | Badger Mountain CCD | Coburg CCD | Cottage Grove CCD | Creswell CCD | Dunes City CCD |
|--------------------------------------|-----------|--------------|---------------------|------------|-------------------|--------------|----------------|
| Total, All Jobs* | 1,904,601 | 156,105 | 2,050 | 2,268 | 4,221 | 1,636 | 315 |
| Goods-Producing | 18.6% | 15.9% | 25.3% | 36.6% | 20.6% | 24.8% | 27.0% |
| Natural Resources and Mining | 2.7% | 1.6% | 5.4% | 4.5% | 3.8% | 3.5% | 20.6% |
| Construction | 5.9% | 5.1% | 8.8% | 7.1% | 6.4% | 8.6% | 5.7% |
| Manufacturing | 10.0% | 9.3% | 11.0% | 24.9% | 10.4% | 12.7% | 0.6% |
| Service Providing | 81.4% | 84.1% | 74.7% | 63.4% | 79.4% | 75.2% | 73.0% |
| Trade, Transportation, and Utilities | 18.6% | 19.6% | 11.9% | 37.3% | 24.0% | 15.5% | 21.0% |
| Information | 2.0% | 1.8% | 1.4% | 0.0% | 1.0% | 0.8% | 0.0% |
| Financial Activities | 4.6% | 3.9% | 1.5% | 7.1% | 2.9% | 1.6% | 5.1% |
| Professional and Business Services | 13.4% | 12.5% | 16.6% | 4.6% | 4.7% | 8.2% | 6.7% |
| Education and Health Services | 23.1% | 27.7% | 19.3% | 8.4% | 24.4% | 22.7% | 4.1% |
| Leisure and Hospitality | 11.4% | 11.9% | 13.5% | 3.5% | 14.3% | 18.9% | 28.6% |
| Other Services | 4.2% | 4.4% | 6.1% | 2.5% | 6.6% | 5.8% | 2.9% |
| Public Administration | 4.2% | 2.4% | 4.5% | 0.1% | 1.6% | 1.8% | 4.8% |

Continued on next slide

Source: U.S. Census Bureau, LEHD Origin-Destination Employment Statistics, 2018 Q2

* Jobs covered by unemployment insurance and federal workers.

Lane County Employment by Sector by Census County Division (2 of 3)

| Sector | Oregon | County Total | Eugene- Spring- field CCD | Florence CCD | Junction City CCD | Lowell CCD | McKenzie River CCD |
|--------------------------------------|-----------|-----------------|------------------------------------|-----------------|-------------------------|---------------|--------------------------|
| Total, All Jobs* | 1,904,601 | 156,105 | 132,952 | 3,758 | 3,869 | 1,133 | 604 |
| Goods-Producing | 18.6% | 15.9% | 14.0% | 7.9% | 30.1% | 47.3% | 30.1% |
| Natural Resources and Mining | 2.7% | 1.6% | 0.5% | 3.0% | 11.5% | 19.3% | 14.1% |
| Construction | 5.9% | 5.1% | 4.8% | 4.4% | 3.4% | 9.3% | 14.2% |
| Manufacturing | 10.0% | 9.3% | 8.7% | 0.5% | 15.2% | 18.7% | 1.8% |
| Service Providing | 81.4% | 84.1% | 86.0% | 92.1% | 69.9% | 52.7% | 69.9% |
| Trade, Transportation, and Utilities | 18.6% | 19.6% | 19.2% | 17.9% | 28.6% | 8.7% | 16.2% |
| Information | 2.0% | 1.8% | 2.0% | 2.3% | 0.2% | 0.2% | 0.0% |
| Financial Activities | 4.6% | 3.9% | 4.1% | 4.7% | 2.3% | 0.4% | 3.3% |
| Professional and Business Services | 13.4% | 12.5% | 13.4% | 4.4% | 6.3% | 13.9% | 9.3% |
| Education and Health Services | 23.1% | 27.7% | 29.1% | 24.1% | 16.3% | 18.4% | 17.2% |
| Leisure and Hospitality | 11.4% | 11.9% | 11.6% | 29.6% | 9.7% | 3.7% | 14.6% |
| Other Services | 4.2% | 4.4% | 4.3% | 5.1% | 5.0% | 6.2% | 6.1% |
| Public Administration | 4.2% | 2.4% | 2.3% | 3.9% | 1.4% | 1.1% | 3.1% |

Source: U.S. Census Bureau, LEHD Origin-Destination Employment Statistics, 2018 Q2

* Jobs covered by unemployment insurance and federal workers.

Continued from previous slide

Continued on next slide

Lane County Employment by Sector by Census County Division (3 of 3)

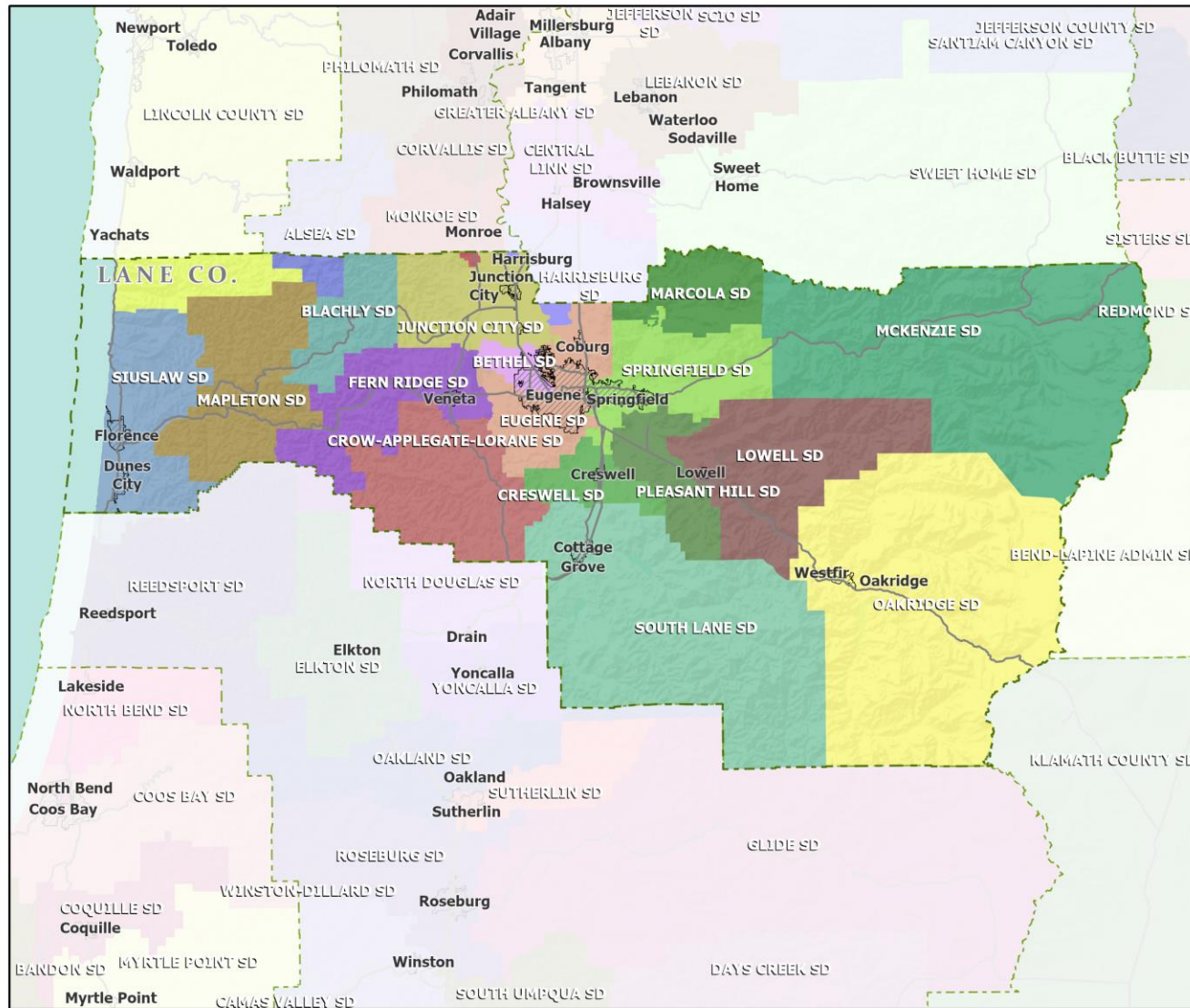
Continued from previous slide

| Sector | Oregon | County Total | Marcola CCD | Middle Siuslaw River-Triangle Lake CCD | Oakridge CCD | Pleasant Hill CCD | Upper Siuslaw River CCD |
|--------------------------------------|-----------|--------------|-------------|--|--------------|-------------------|-------------------------|
| Total, All Jobs* | 1,904,601 | 156,105 | 462 | 284 | 644 | 1,594 | 315 |
| Goods-Producing | 18.6% | 15.9% | 40.3% | 40.1% | 19.3% | 38.5% | 77.1% |
| Natural Resources and Mining | 2.7% | 1.6% | 14.1% | 18.3% | 13.4% | 5.0% | 15.9% |
| Construction | 5.9% | 5.1% | 22.3% | 9.2% | 2.0% | 11.5% | 4.4% |
| Manufacturing | 10.0% | 9.3% | 3.9% | 12.7% | 3.9% | 22.0% | 56.8% |
| Service Providing | 81.4% | 84.1% | 59.7% | 59.9% | 80.7% | 61.5% | 22.9% |
| Trade, Transportation, and Utilities | 18.6% | 19.6% | 5.6% | 9.9% | 18.3% | 26.9% | 2.5% |
| Information | 2.0% | 1.8% | 0.0% | 0.0% | 0.0% | 0.0% | 0.0% |
| Financial Activities | 4.6% | 3.9% | 0.2% | 1.4% | 2.5% | 1.4% | 0.0% |
| Professional and Business Services | 13.4% | 12.5% | 7.6% | 2.8% | 2.2% | 6.5% | 6.7% |
| Education and Health Services | 23.1% | 27.7% | 27.5% | 39.4% | 25.8% | 12.9% | 10.2% |
| Leisure and Hospitality | 11.4% | 11.9% | 10.4% | 2.1% | 17.4% | 4.4% | 0.0% |
| Other Services | 4.2% | 4.4% | 8.0% | 2.8% | 5.9% | 3.5% | 2.2% |
| Public Administration | 4.2% | 2.4% | 0.4% | 1.4% | 8.7% | 6.0% | 1.3% |

Source: U.S. Census Bureau, LEHD Origin-Destination Employment Statistics, 2018 Q2

* Jobs covered by unemployment insurance and federal workers.

School Districts: Lane County



- Counties
- Incorporated Cities
- Highways

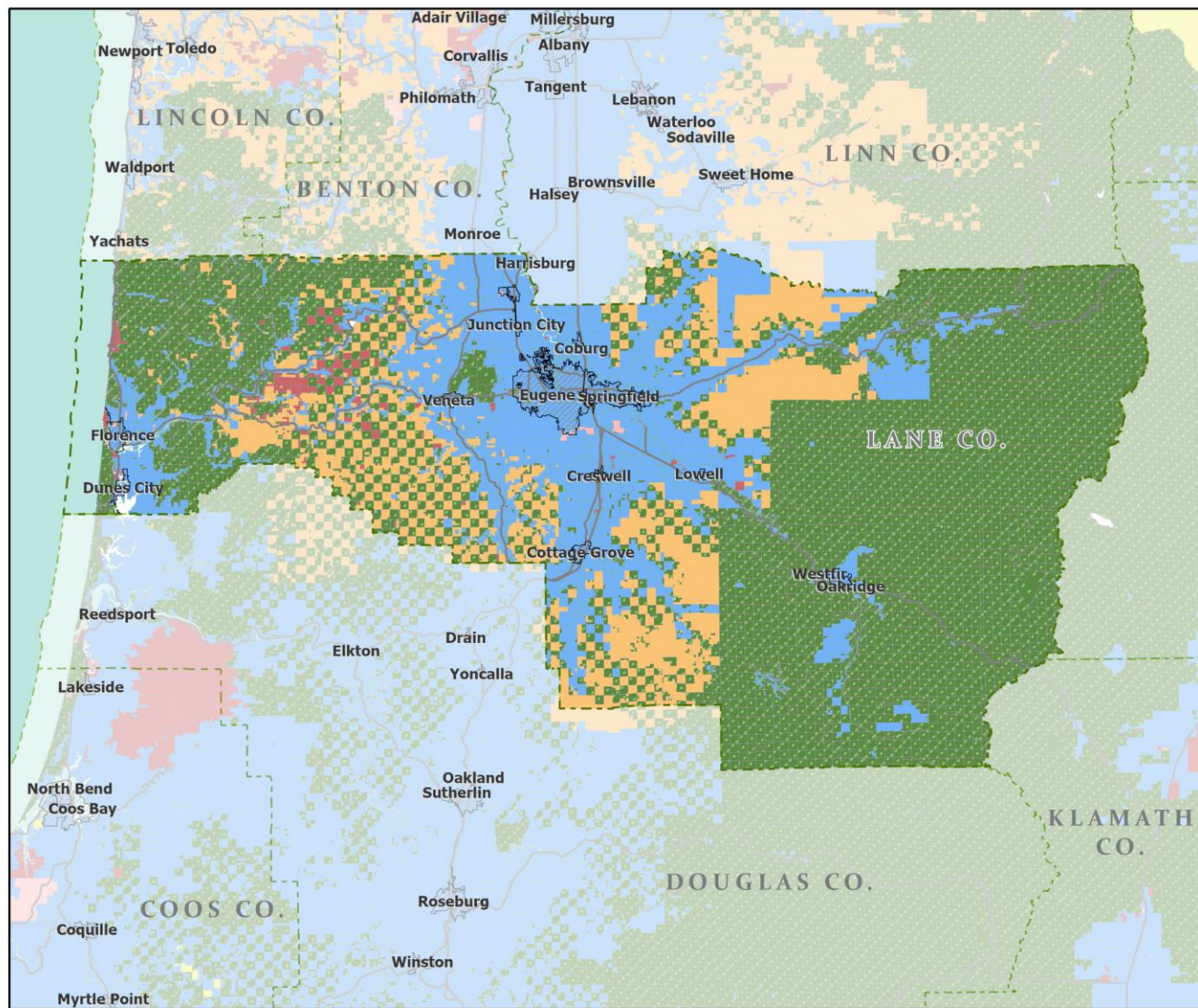


Portland State University,
Population Research Center,
May 2021.
www.pdx.edu/prc

Sources: Esri, USGS, NOAA
State of Oregon GEO;
Oregon Dept. of
Transportation.

0 80 Miles

Land Ownership: Lane County



- Counties
- Incorporated Cities
- Highways

BLM OWNERSHIP (2015)

- Federal
- State Government
- Local Government
- Tribal
- Private
- Private Industrial

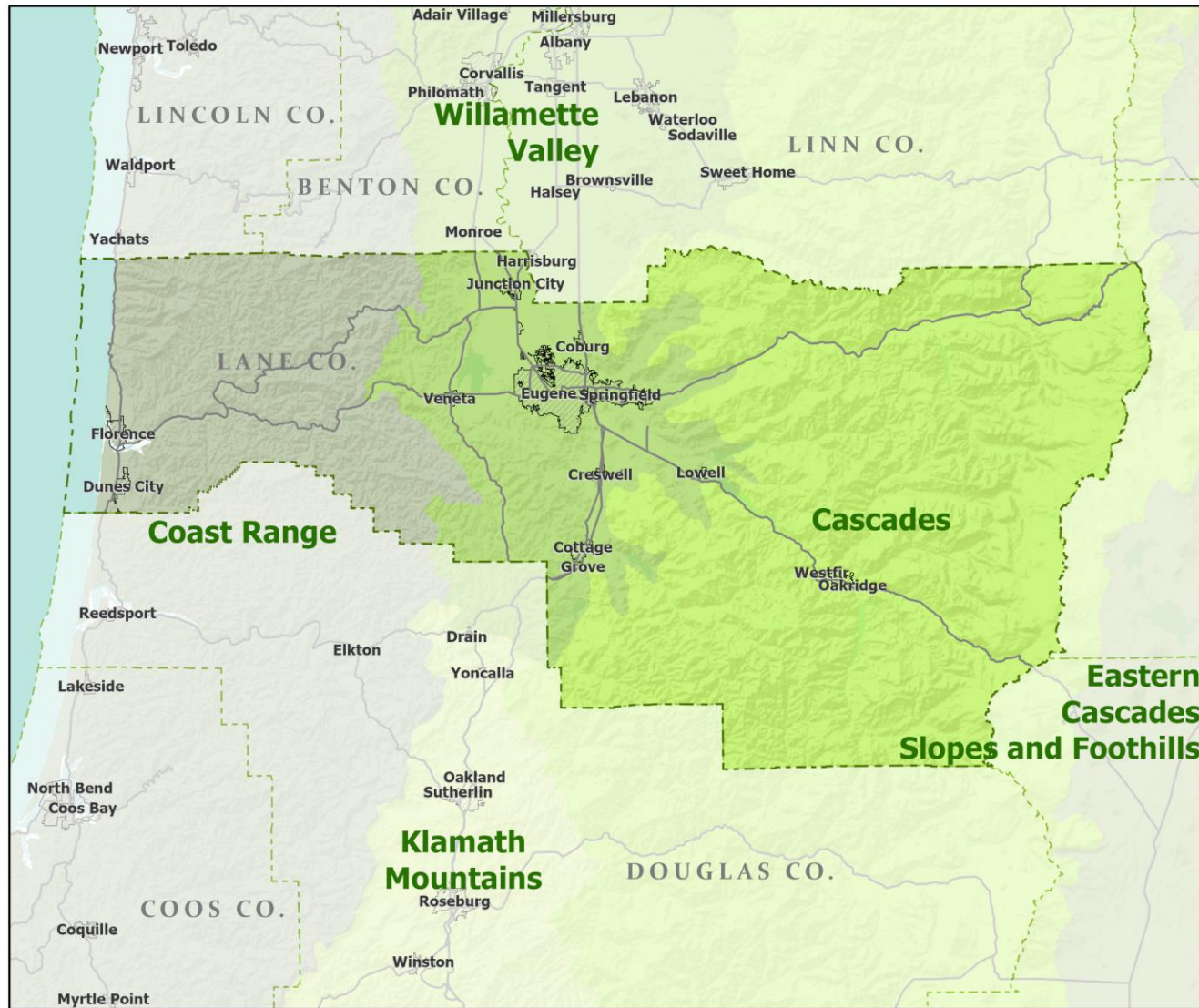


Portland State University,
Population Research Center,
May 2021.
www.pdx.edu/prc

Sources: Esri, USGS, NOAA
State of Oregon GEO;
Oregon Dept. of
Transportation.



Ecoregions: Lane County



- Counties
- Incorporated Cities
- Highways

LEVEL III ECOREGIONS OF OREGON (2006)

- Cascades
- Coast Range
- Eastern Cascades Slopes and Foothills
- Klamath Mountains
- Willamette Valley

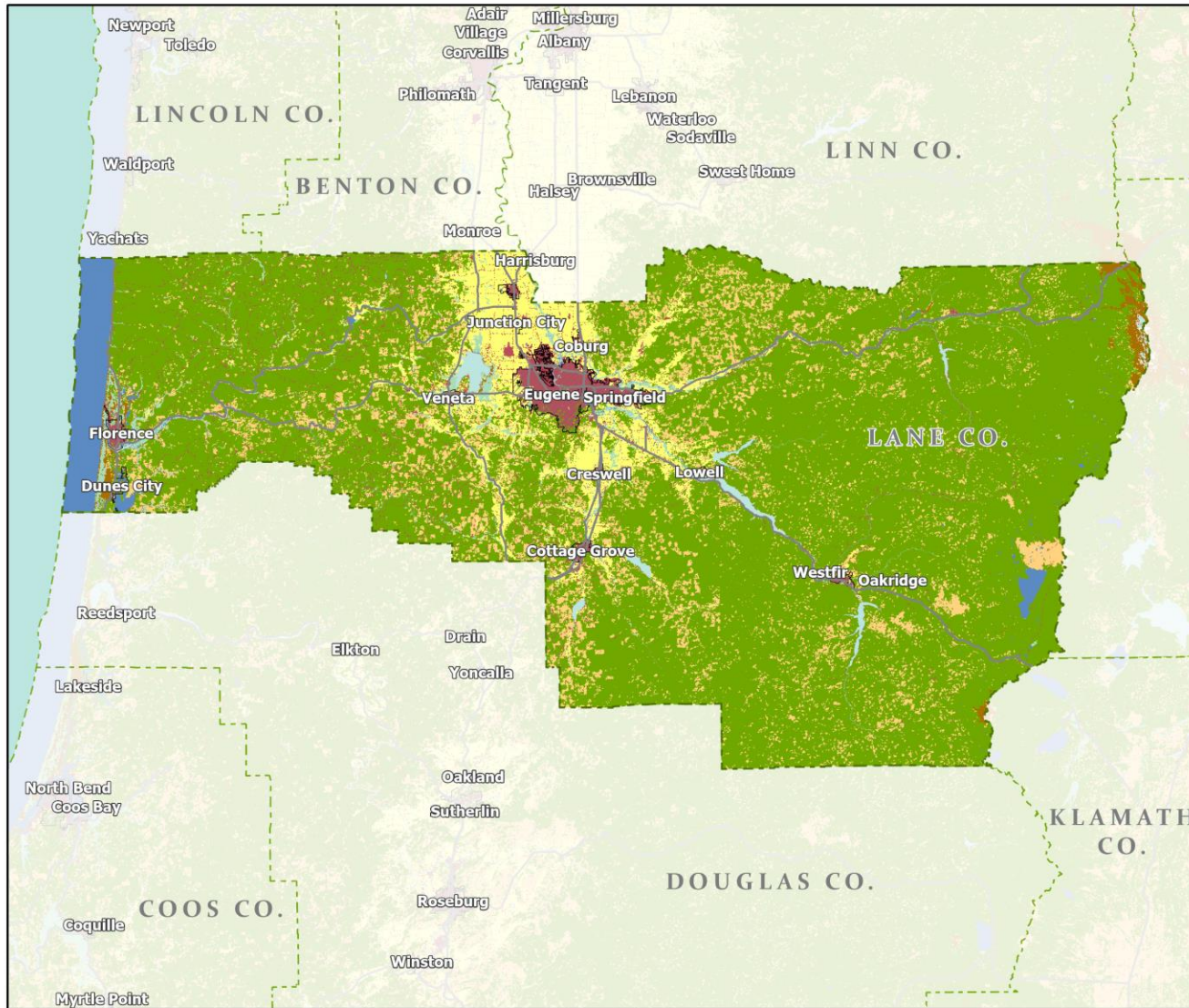


Portland State University,
Population Research Center,
May 2021.
www.pdx.edu/prc

Sources: Esri, USGS, NOAA
State of Oregon GEO;
Oregon Dept. of
Transportation.



Land Cover: Lane County



Portland State University,
Population Research Center,
May 2021.
www.pdx.edu/prc

Sources: Esri, USGS, NOAA
State of Oregon GEO;
Oregon Dept. of
Transportation.

