

Coos County Overview

House and Senate Committees on Redistricting

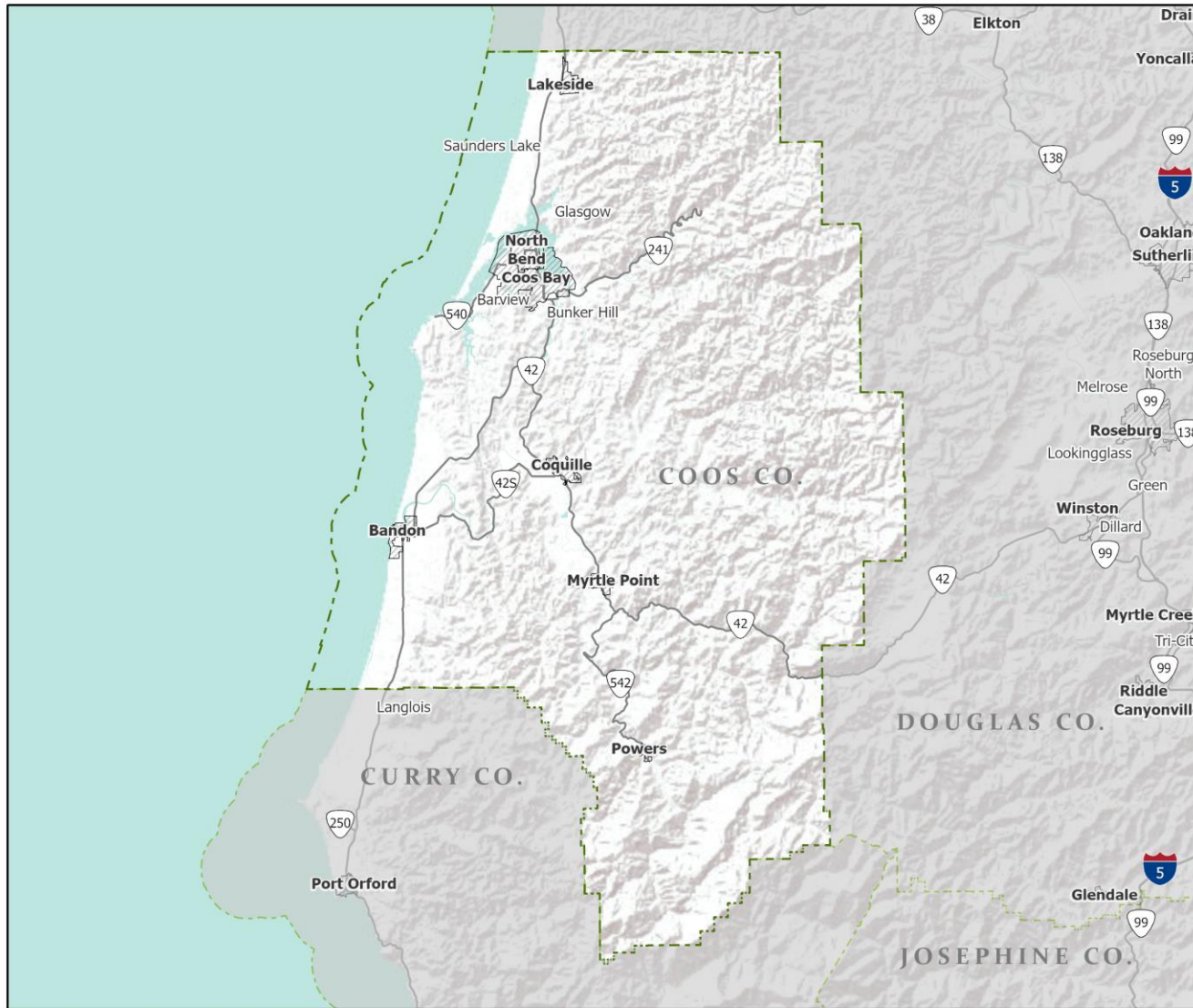
June 2, 2021

July 1, 2020 population estimate	63,315
Population rank	16th
Share of state population	1.5%
Density (per square mile)	38.9
Density rank	16th
Area (square miles)	1,629
Area rank	23rd
Share of state area	1.7%



Sources: PSU Population Research Center; Oregon Blue Book.

Highways: Coos County



- Counties
- Incorporated Cities
- Highways

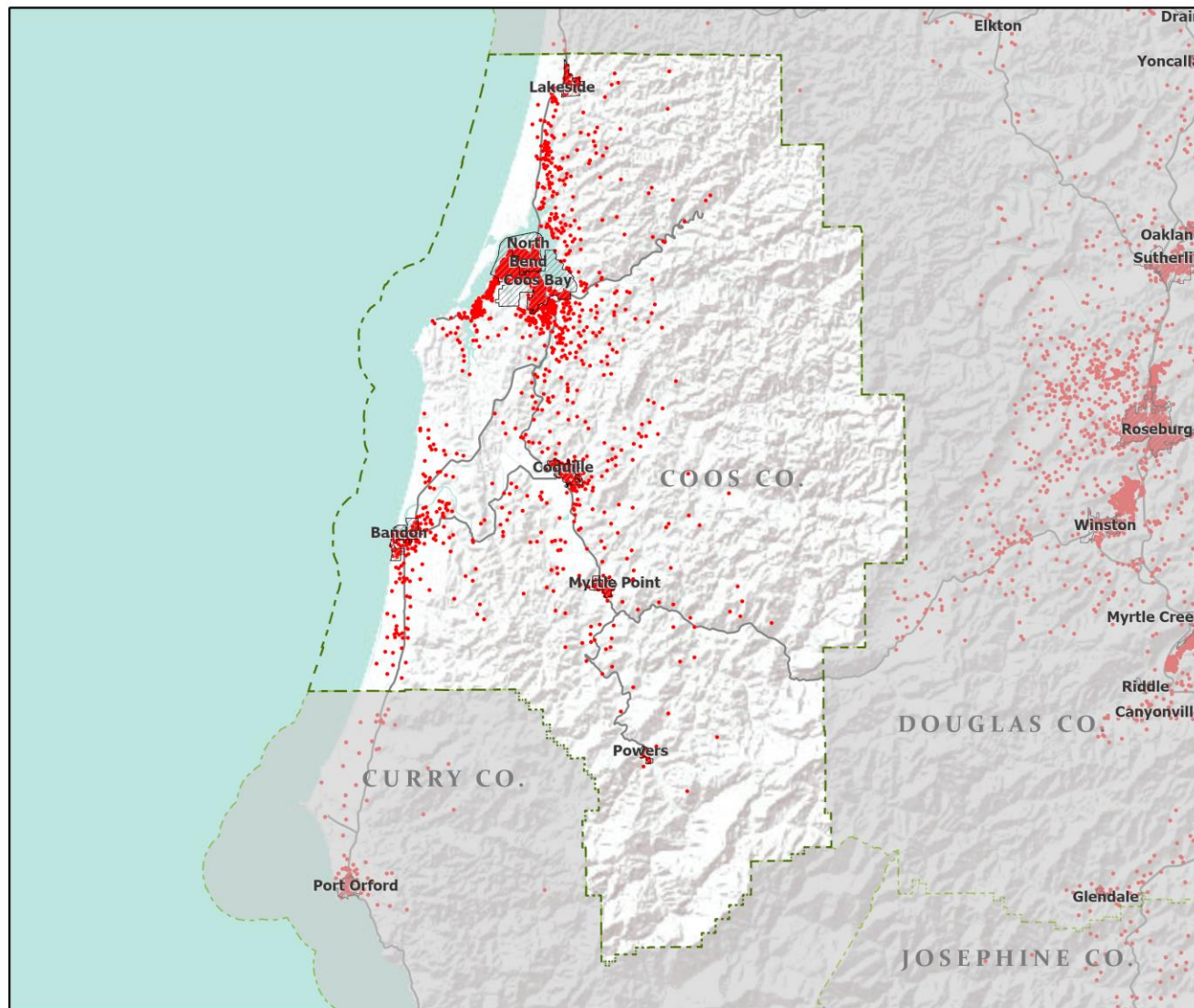


Portland State University,
Population Research Center,
May 2021.
www.pdx.edu/prc

Sources: Esri, USGS, NOAA
State of Oregon GEO;
Oregon Dept. of
Transportation.

0 60 Miles

Population: Coos County



- Counties
- Incorporated Cities
- Highways
- 2010 POPULATION
 - 1 Dot = 25 persons

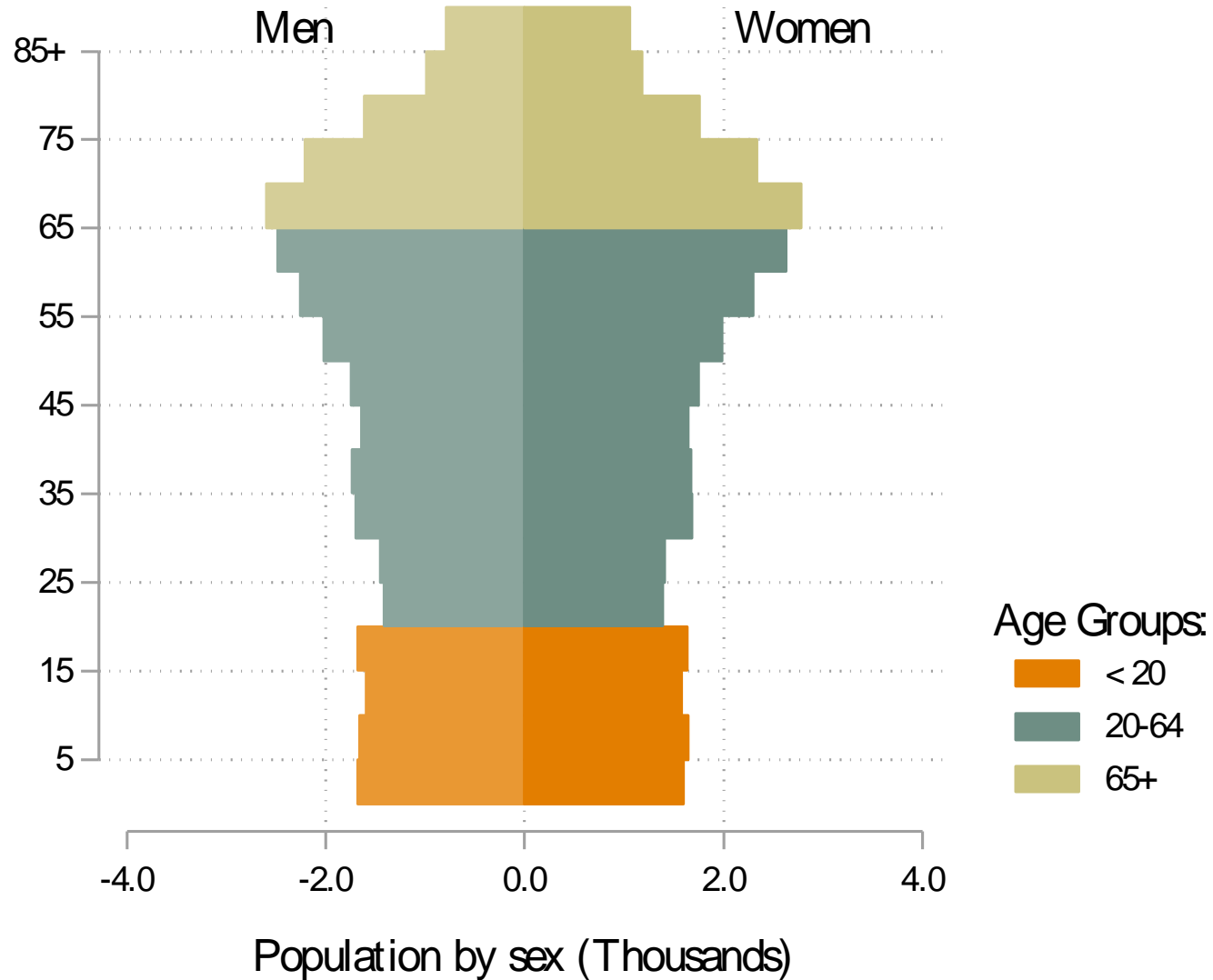


Portland State University,
Population Research Center,
May 2021.
www.pdx.edu/prc

Sources: Esri, USGS, NOAA
State of Oregon GEO;
Oregon Dept. of
Transportation.

0 60 Miles

Coos population by age & sex: 2020



Note: Men plotted on negative axis

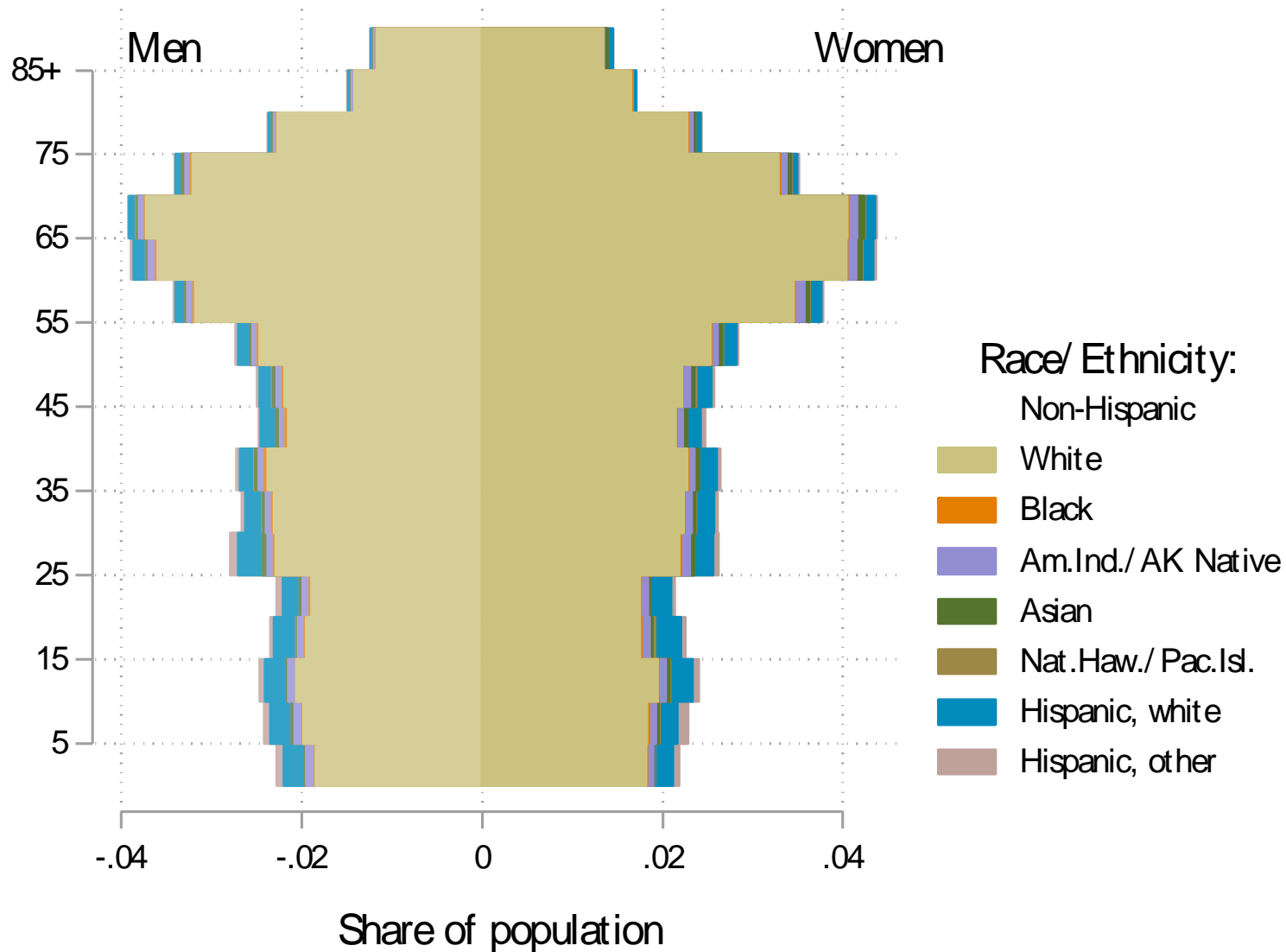
Source: Estimates by Population Research Center, PSU

Age Distribution, Coos County

Age Group	2020 Estimate	2020 Percent of Total	Oregon 2020 Percent of Total
Total population	63,315	100.0%	100.0%
Under age 5	3,272	5.2%	5.4%
Age 5 to 17	8,393	13.3%	14.9%
Age 18 to 64	34,322	54.2%	61.1%
Age 65 and over	17,327	27.4%	18.6%

Source: PSU Population Research Center July 1, 2020 Population Estimates

Coos County population by age & sex: 2019



Note: Men plotted on negative axis

Source: Estimates by US Census Bureau

Race and Ethnicity, Coos County

	2010 Census	2010 Census Percent	2015-19 ACS Estimate	2015-19 ACS Percent	Oregon 2015-19 ACS Percent
HISPANIC OR LATINO AND RACE					
Total population	63,043	100.0%	63,686	100.0%	100.0%
Hispanic or Latino	3,391	5.4%	4,139	6.5%*	13.0%
Not Hispanic or Latino	59,652	94.6%	59,547	93.5%*	87.0%
White alone	54,820	87.0%	54,296	85.3%*	75.7%
Black or African American alone	234	0.4%	258	0.4%	1.8%
American Indian and Alaska Native alone	1,467	2.3%	1,207	1.9%*	0.9%
Asian alone	644	1.0%	652	1.0%	4.3%
Native Hawaiian and Other Pacific Islander alone	104	0.2%	30	0.0%*	0.4%
Some Other Race alone	75	0.1%	70	0.1%	0.1%
Two or More Races	2,308	3.7%	3,034	4.8%*	3.7%

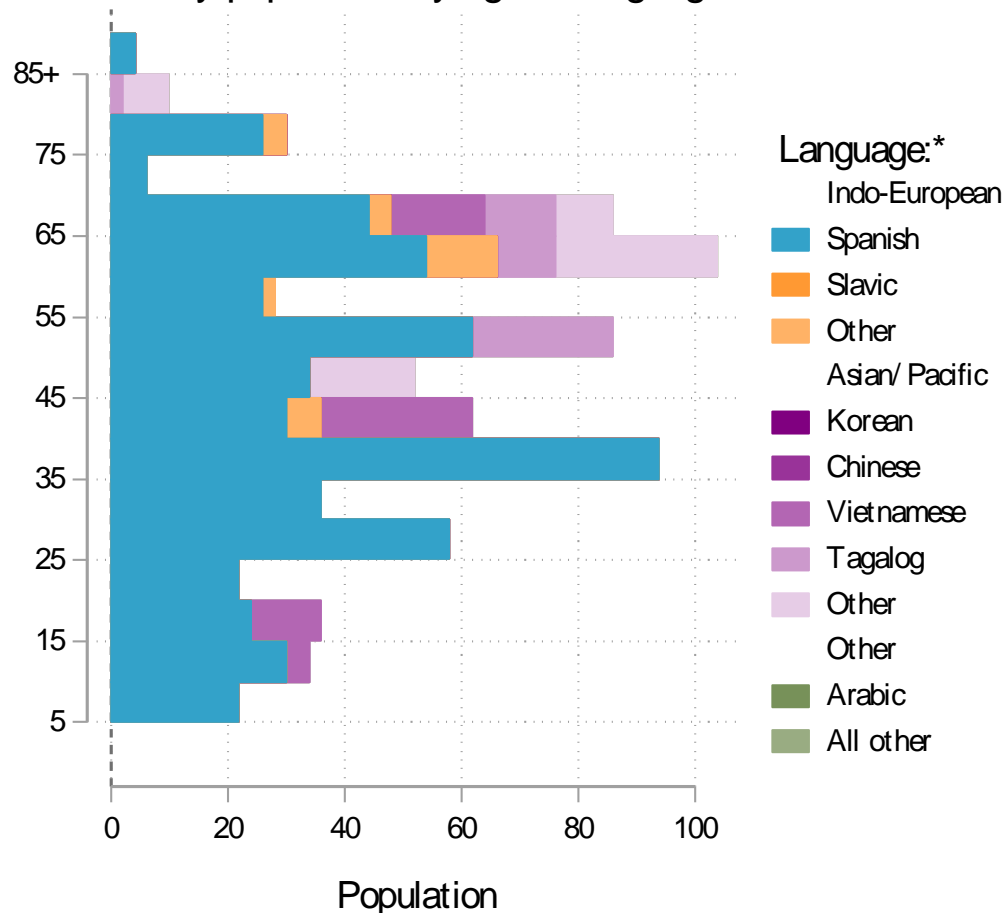
	2010 Census	2010 Census Percent	2015-19 ACS Estimate	2015-19 ACS Percent	Oregon 2015-19 ACS Percent
RACE ALONE OR IN COMBINATION WITH ONE OR MORE OTHER RACES**					
White	59,208	93.9%	59,907	94.1%	88.8%
Black or African American	531	0.8%	643	1.0%	2.9%
American Indian and Alaska Native	3,461	5.5%	3,984	6.3%*	3.1%
Asian	1,110	1.8%	1,340	2.1%*	6.0%
Native Hawaiian and Other Pacific Islander	285	0.5%	237	0.4%	0.8%
Some Other Race	1,373	2.2%	1,455	2.3%	3.6%

Source: U.S. Census Bureau, 2010 Census and 2019 5-year American Community Survey estimates.

* Difference between 2010 Census and 2015-19 ACS is statistically significant at the 90% confidence level.

** Total may add to more than 100% due to persons identifying as more than one race.

Coos County population by age & language: 2019



Note: * Languages for persons who speak English less than very well.

Source: ACS tables B16004, C16001, PUMS, PEP estimates, Analysis by PRC, PSU

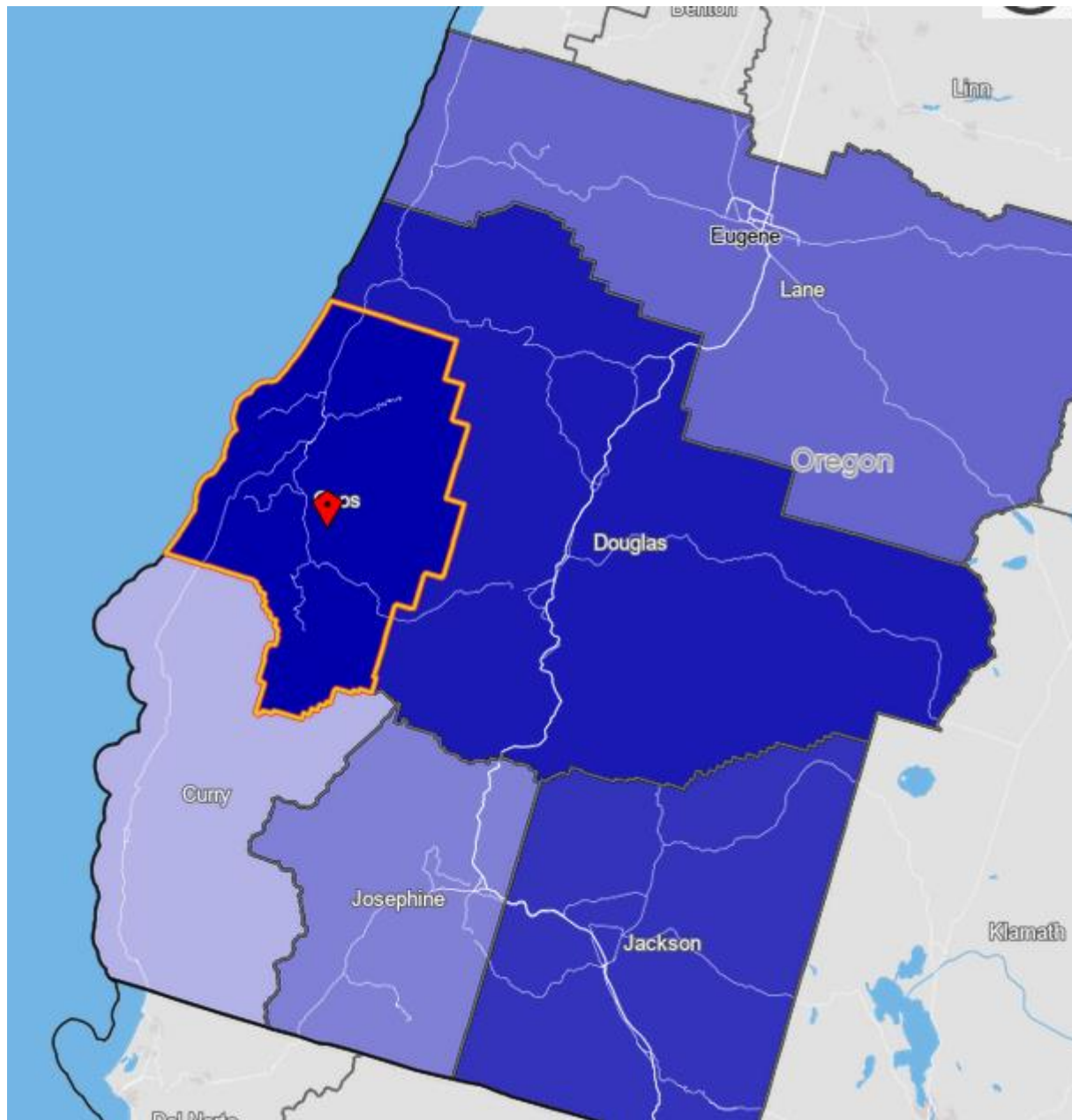
[Link to Table C16001](#) for all counties, including margins of error.

[Visualization](#) of language data by census tract within county.

Language Spoken at Home Speak English less than "very well" Coos County

Languages	Estimate
Total Population Age 5 and Older	60,527
Speaking English less than "very well"	833
Spanish	572
Russian, Polish, or other Slavic languages	12
Other Indo-European languages	47
Korean	0
Chinese (incl. Cantonese and Mandarin)	0
Vietnamese	55
Tagalog (incl. Filipino)	50
Other Asian and Pacific Island languages	68
Arabic	0
Other languages	29

Source: U.S. Census Bureau American Community Survey 2019 5-year estimates, Table C16001.



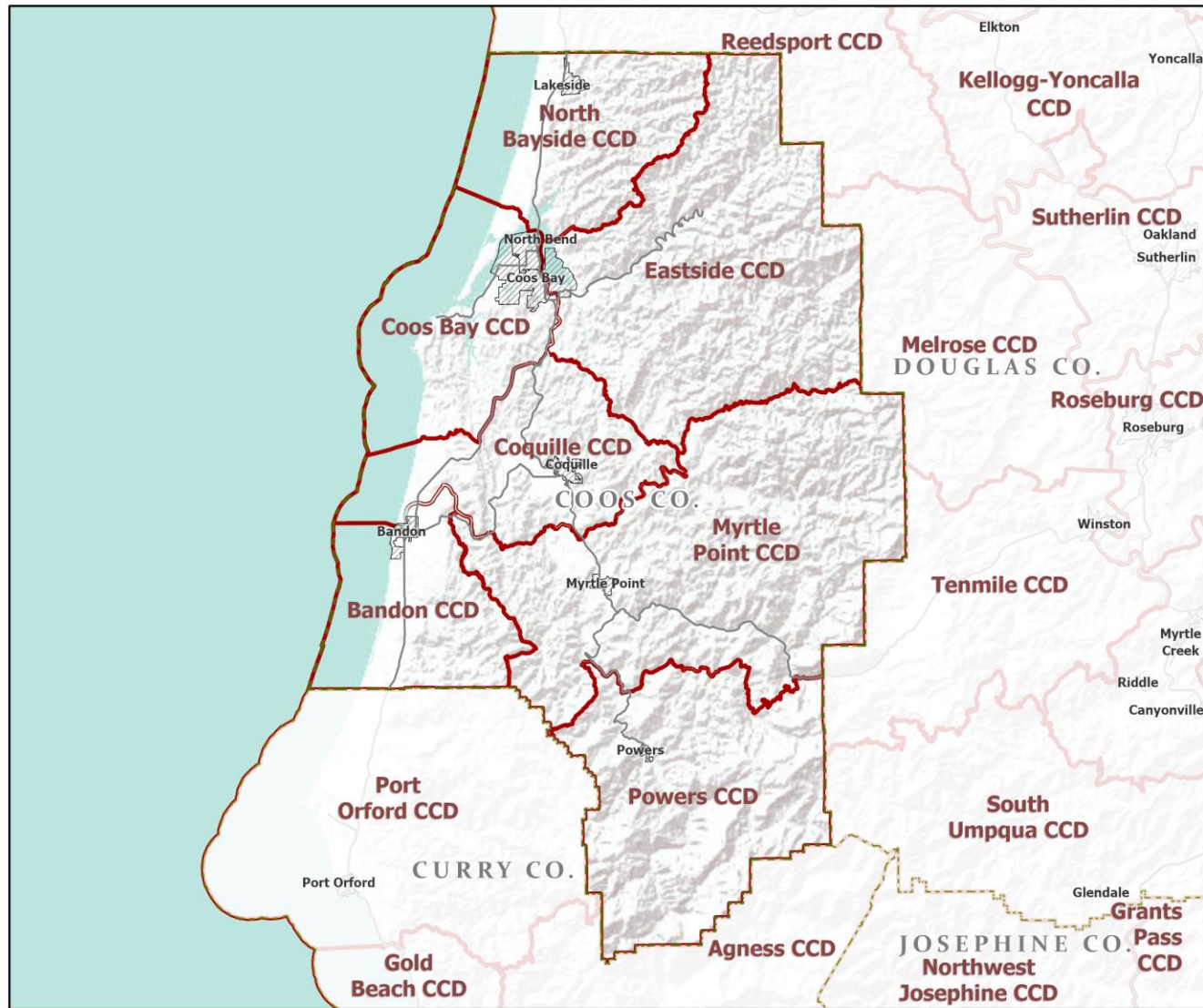
Coos County

Commute Flows

Jobs Counts by Counties Where Workers are Employed - All Jobs

	2018	
	Count	Share
All Counties	23,027	100.0%
Coos County, OR	16,788	72.9%
Douglas County, OR	1,362	5.9%
Jackson County, OR	775	3.4%
Multnomah County, OR	569	2.5%
Lane County, OR	568	2.5%
Josephine County, OR	367	1.6%
Marion County, OR	352	1.5%
Curry County, OR	322	1.4%
Washington County, OR	312	1.4%
Clackamas County, OR	200	0.9%
All Other Locations	1,412	6.1%

County Subdivisions (CCDs): Coos County



-  Counties
-  Incorporated Cities
-  Highways
-  County Subdivisions (CCDs)



Portland State University,
Population Research Center,
May 2021.
www.pdx.edu/prc

Sources: Esri, USGS, NOAA
State of Oregon GEO;
Oregon Dept. of
Transportation.

0 60 Miles

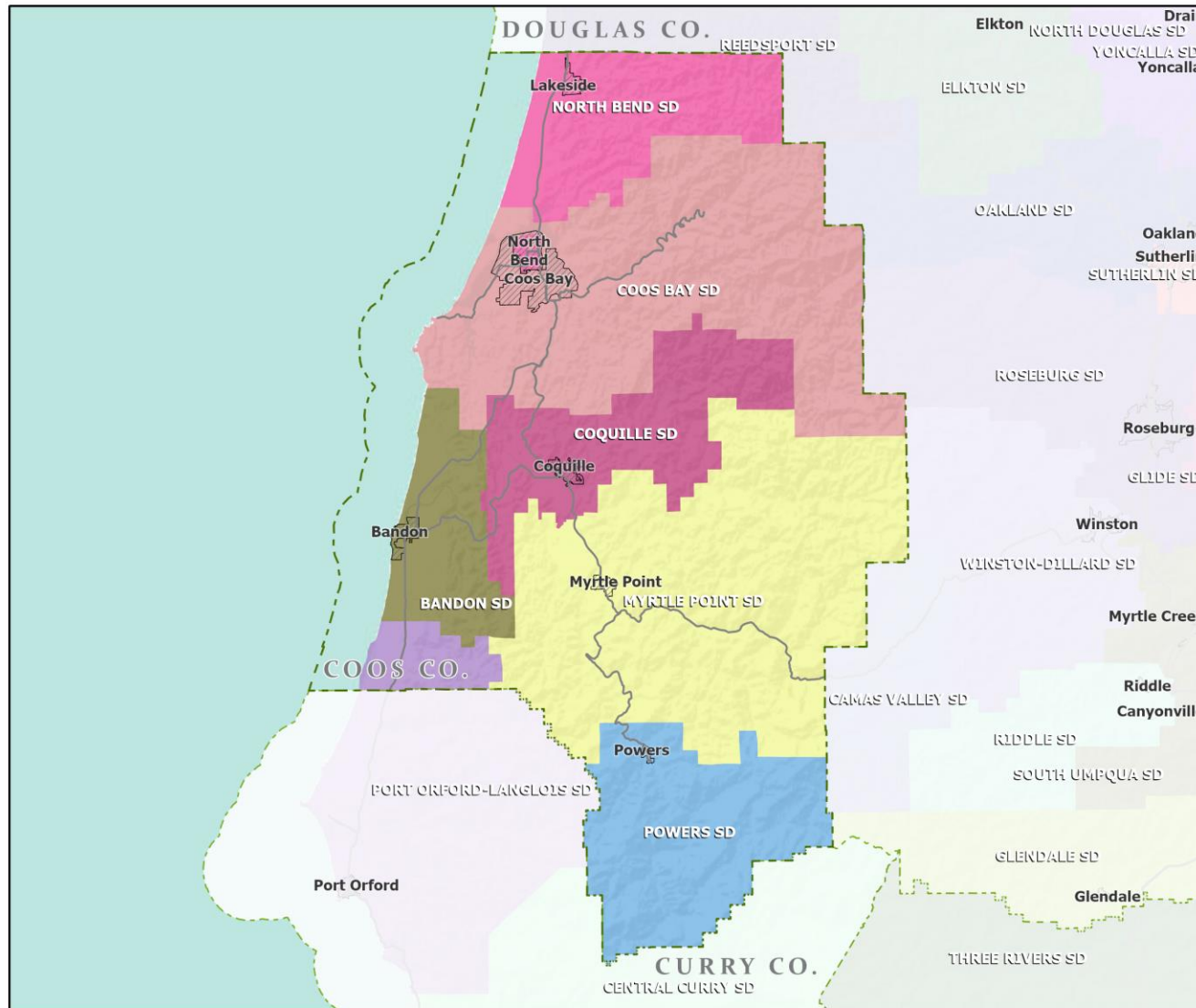
Coos County Employment by Sector by Census County Division

Sector	Oregon	County Total	Bandon CCD	Coos Bay CCD	Coquille CCD	Eastside CCD	Myrtle Point CCD	North Bayside CCD	Powers CCD
Total, All Jobs*	1,904,601	22,526	1,848	15,041	2,992	863	977	710	95
Goods-Producing	18.6%	16.0%	15.8%	8.6%	26.1%	60.8%	37.2%	43.1%	32.6%
Natural Resources and Mining	2.7%	4.1%	3.0%	2.0%	8.6%	6.7%	23.1%	4.4%	8.4%
Construction	5.9%	4.7%	3.0%	4.2%	5.4%	11.1%	6.0%	6.5%	24.2%
Manufacturing	10.0%	7.1%	9.8%	2.5%	12.1%	43.0%	8.0%	32.3%	0.0%
Service Providing	81.4%	84.0%	84.2%	91.4%	73.9%	39.2%	62.8%	56.9%	67.4%
Trade, Transportation, and Utilities	18.6%	17.8%	17.9%	20.4%	7.5%	3.6%	19.3%	19.4%	22.1%
Information	2.0%	1.0%	0.8%	1.3%	0.0%	0.0%	0.4%	0.3%	0.0%
Financial Activities	4.6%	3.1%	3.2%	3.1%	4.4%	0.5%	1.8%	2.7%	0.0%
Professional and Business Services	13.4%	9.5%	3.1%	11.9%	2.5%	12.2%	7.5%	3.0%	1.1%
Education and Health Services	23.1%	28.3%	28.8%	33.2%	15.9%	13.7%	19.5%	6.9%	12.6%
Leisure and Hospitality	11.4%	14.9%	24.1%	13.1%	26.0%	5.1%	5.4%	8.5%	3.2%
Other Services	4.2%	3.8%	3.5%	3.8%	3.2%	4.2%	4.5%	4.4%	7.4%
Public Administration	4.2%	5.8%	2.8%	4.5%	14.3%	0.0%	4.3%	11.8%	21.1%

Source: U.S. Census Bureau, LEHD Origin-Destination Employment Statistics, 2018 Q2

* Jobs covered by unemployment insurance and federal workers.

School Districts: Coos County



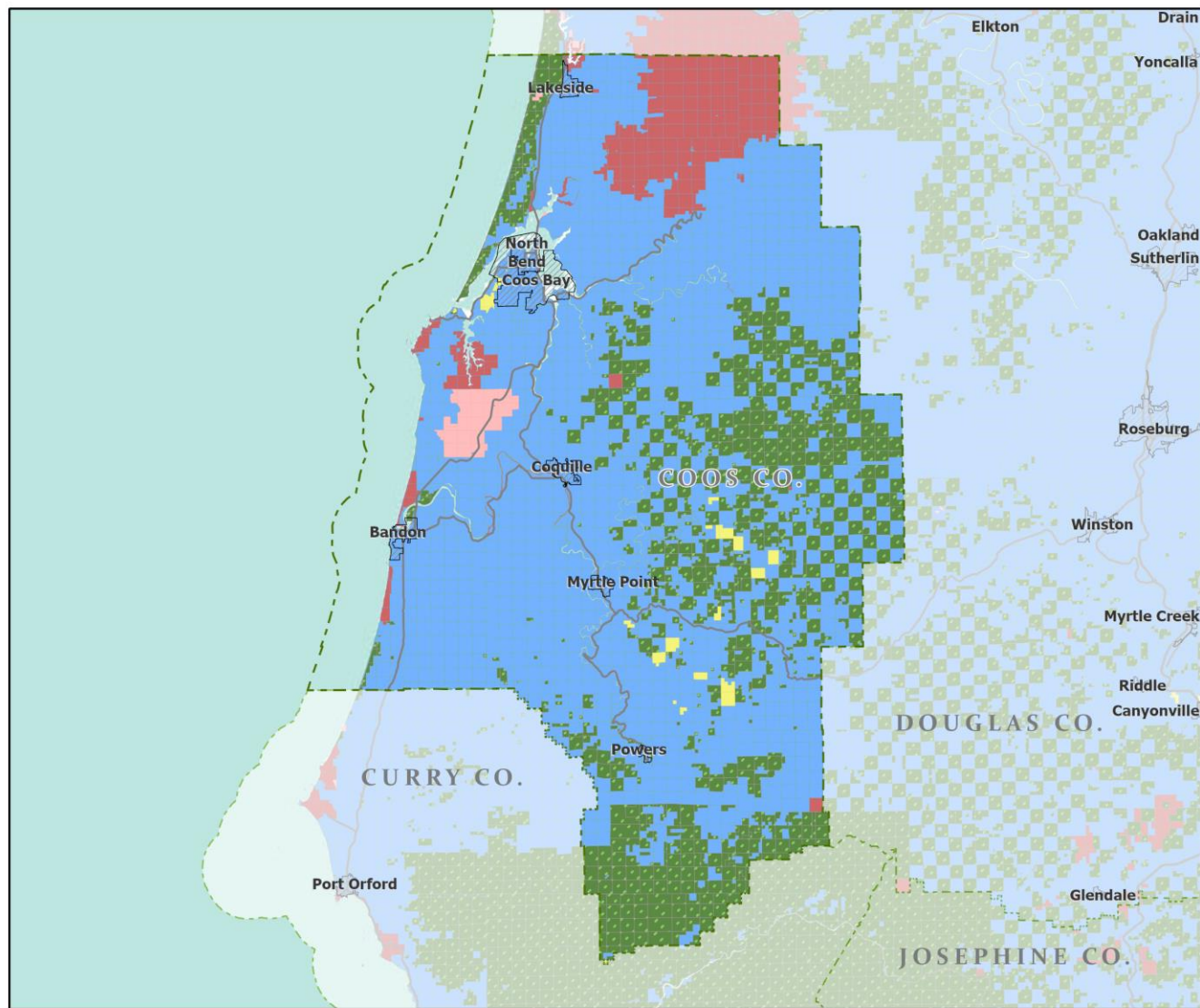
- Counties
- Incorporated Cities
- Highways



Portland State University,
Population Research Center,
May 2021.
www.pdx.edu/prc

Sources: Esri, USGS, NOAA
State of Oregon GEO;
Oregon Dept. of
Transportation.

Land Ownership: Coos County

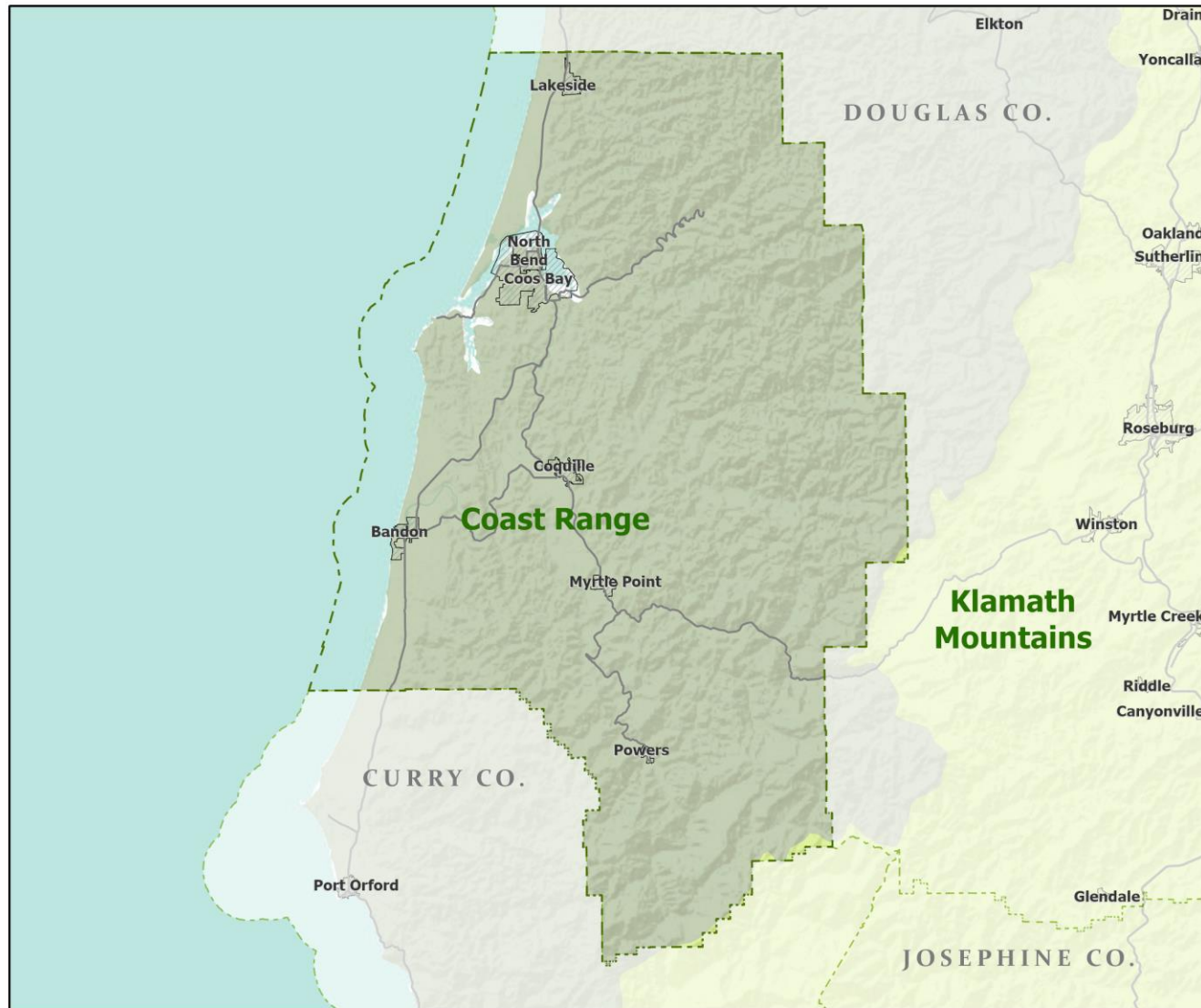


Portland State University,
Population Research Center,
May 2021.
www.pdx.edu/prc

Sources: Esri, USGS, NOAA
State of Oregon GEO;
Oregon Dept. of
Transportation.



Ecoregions: Coos County



- Counties
- Incorporated Cities
- Highways
- LEVEL III ECOREGIONS OF OREGON (2006)
- Coast Range
- Klamath Mountains

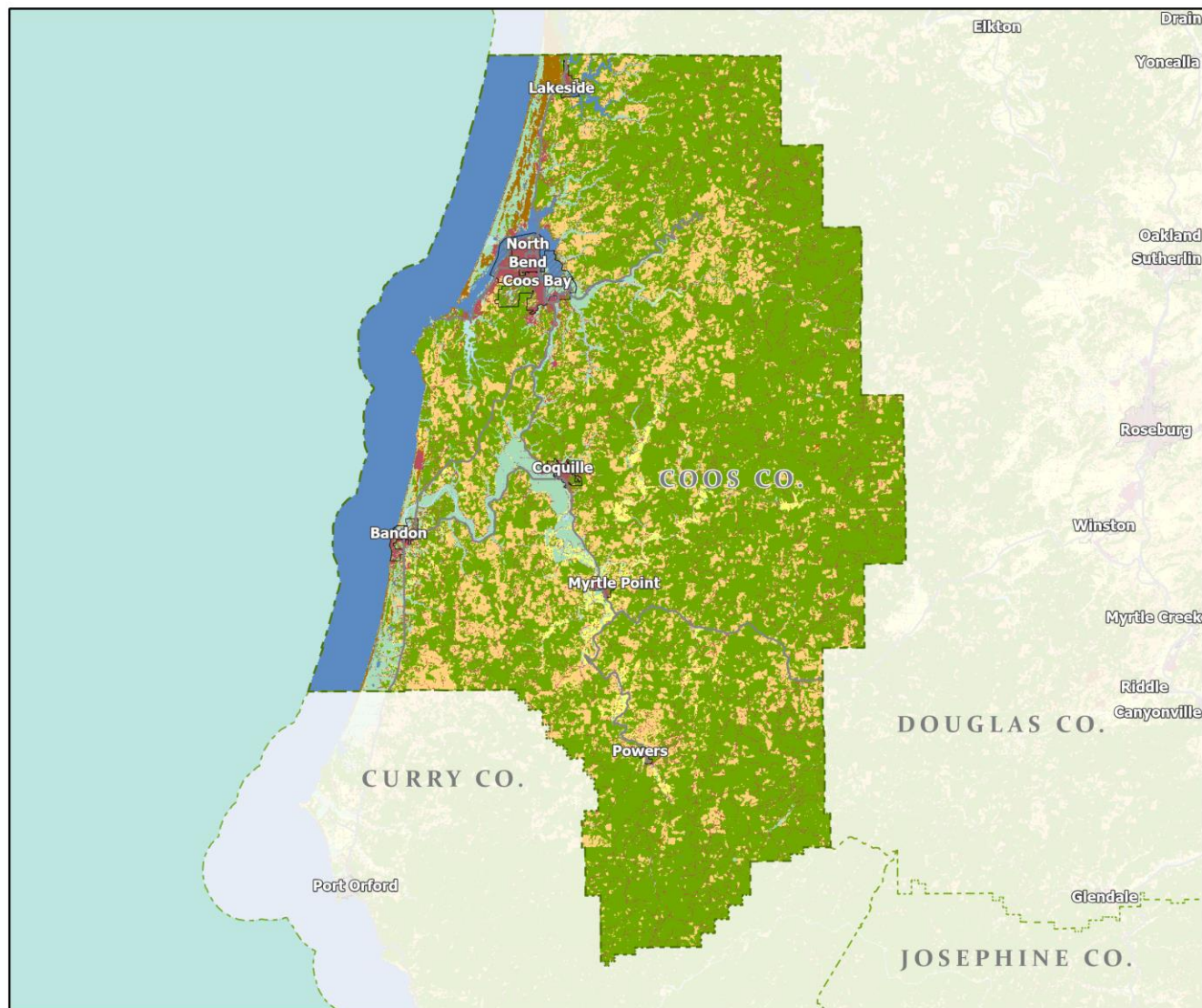


Portland State University,
Population Research Center,
May 2021.
www.pdx.edu/prc

Sources: Esri, USGS, NOAA
State of Oregon GEO;
Oregon Dept. of
Transportation.

0 60 Miles

Land Cover: Coos County



- Counties
- Incorporated Cities
- Highways

NATIONAL LAND COVER

- Developed
- Cultivated Crops/Pasture/Hay
- Barren Land
- Forest
- Grasslands/Scrub/Sedge
- Lichens/Moss
- Wetlands
- Perennial Snow/Ice
- Open Water



Portland State University,
Population Research Center,
May 2021.
www.pdx.edu/prc

Sources: Esri, USGS, NOAA
State of Oregon GEO;
Oregon Dept. of
Transportation.

0 60 Miles