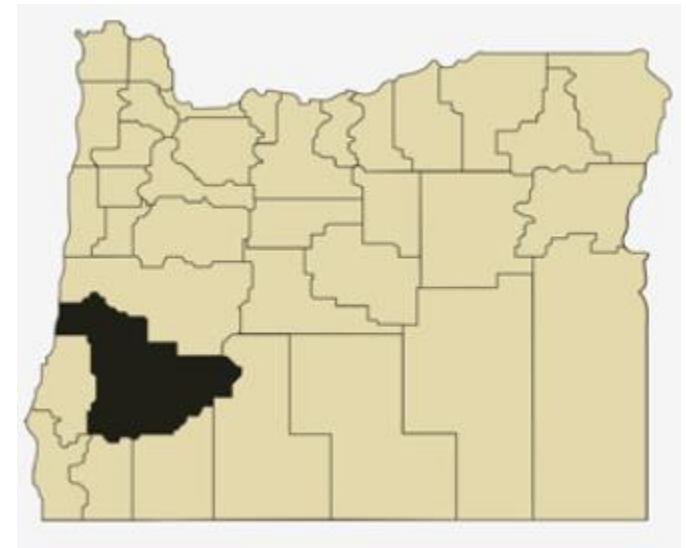


Douglas County Overview

House and Senate Committees on Redistricting

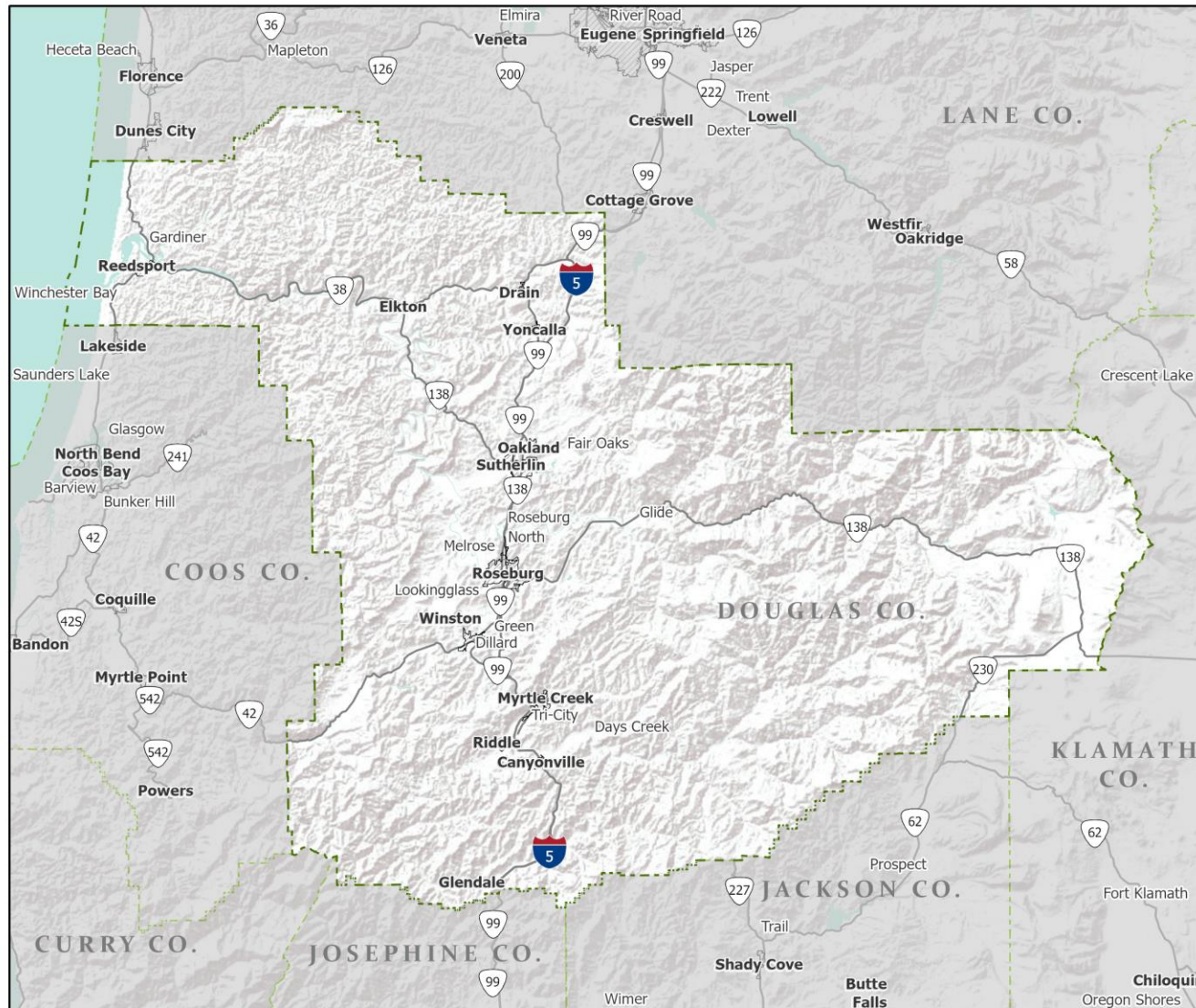
June 2, 2021

July 1, 2020 population estimate	112,530
Population rank	9th
Share of state population	2.6%
Density (per square mile)	22.2
Density rank	20th
Area (square miles)	5,071
Area rank	5th
Share of state area	5.2%



Sources: PSU Population Research Center; Oregon Blue Book.

Highways: Douglas County



- Counties
- Incorporated Cities
- Highways

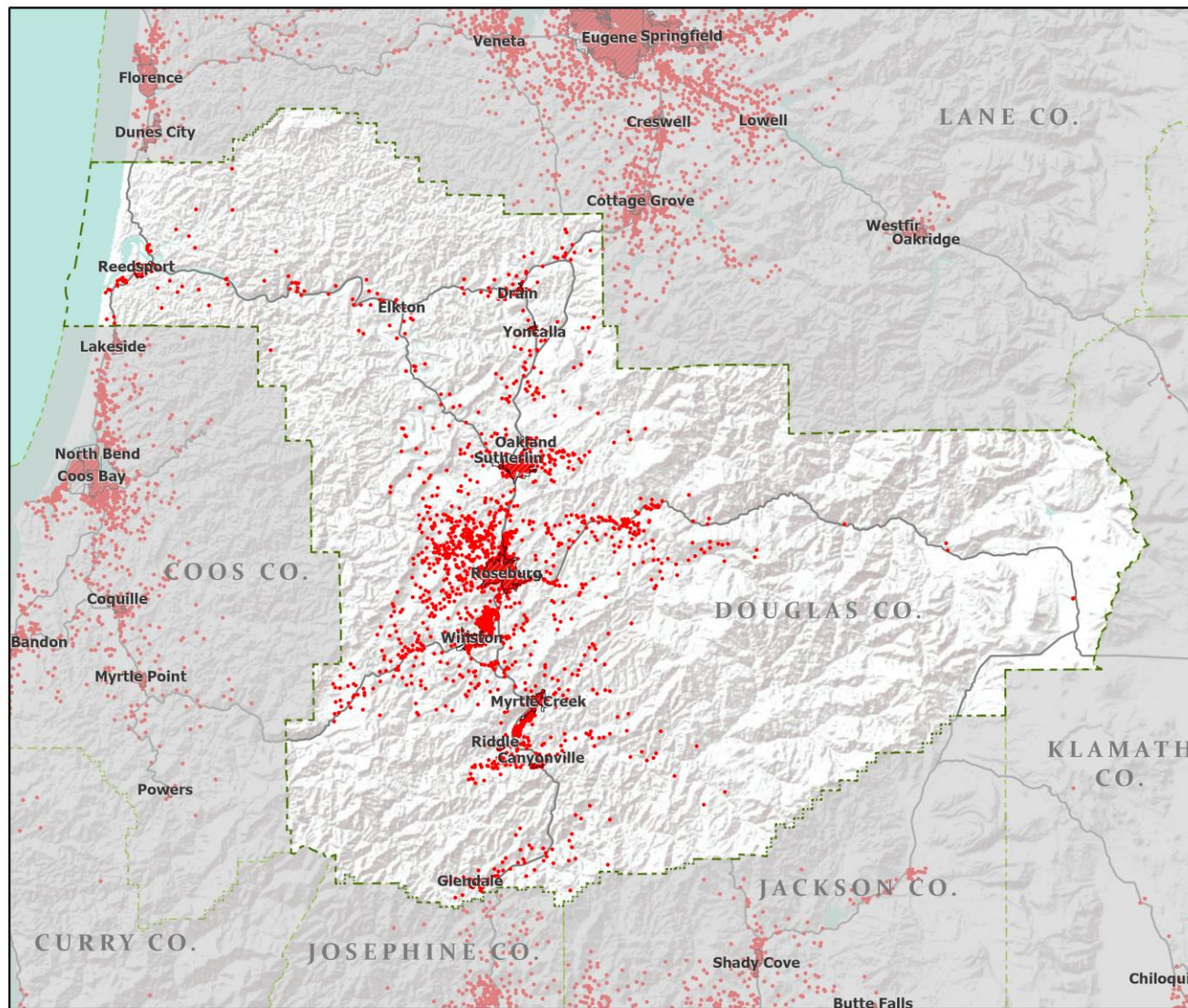





Portland State University,
Population Research Center,
May 2021.
www.pdx.edu/prc

Sources: Esri, USGS, NOAA
State of Oregon GEO;
Oregon Dept. of
Transportation.



Population: Douglas County



-  Counties
-  Incorporated Cities
-  Highways
- 2010 POPULATION
- 1 Dot = 25 persons

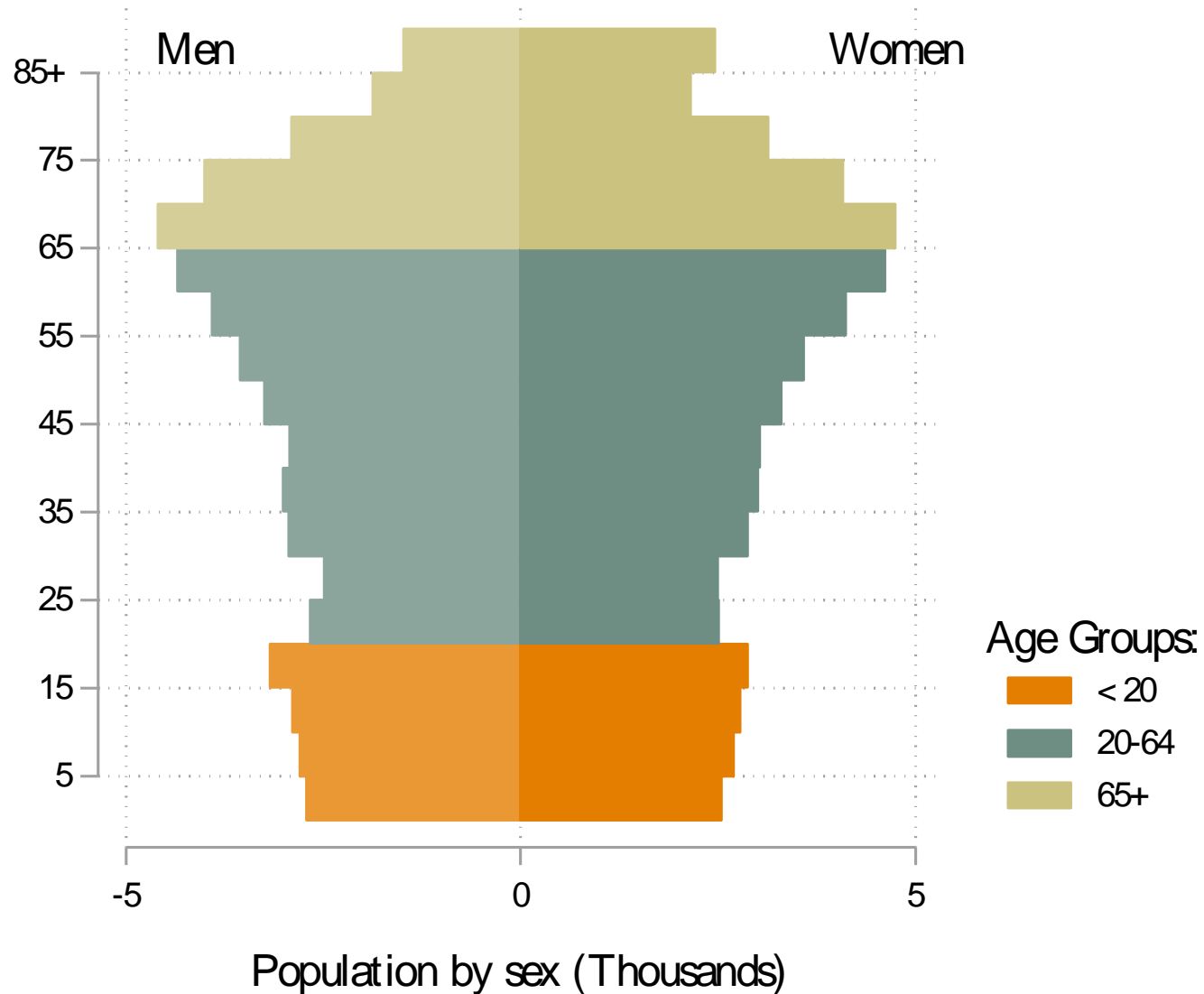


Portland State University,
Population Research Center,
May 2021.
www.pdx.edu/prc

Sources: Esri, USGS, NOAA
State of Oregon GEO;
Oregon Dept. of
Transportation.



Douglas population by age & sex: 2020



Note: Men plotted on negative axis

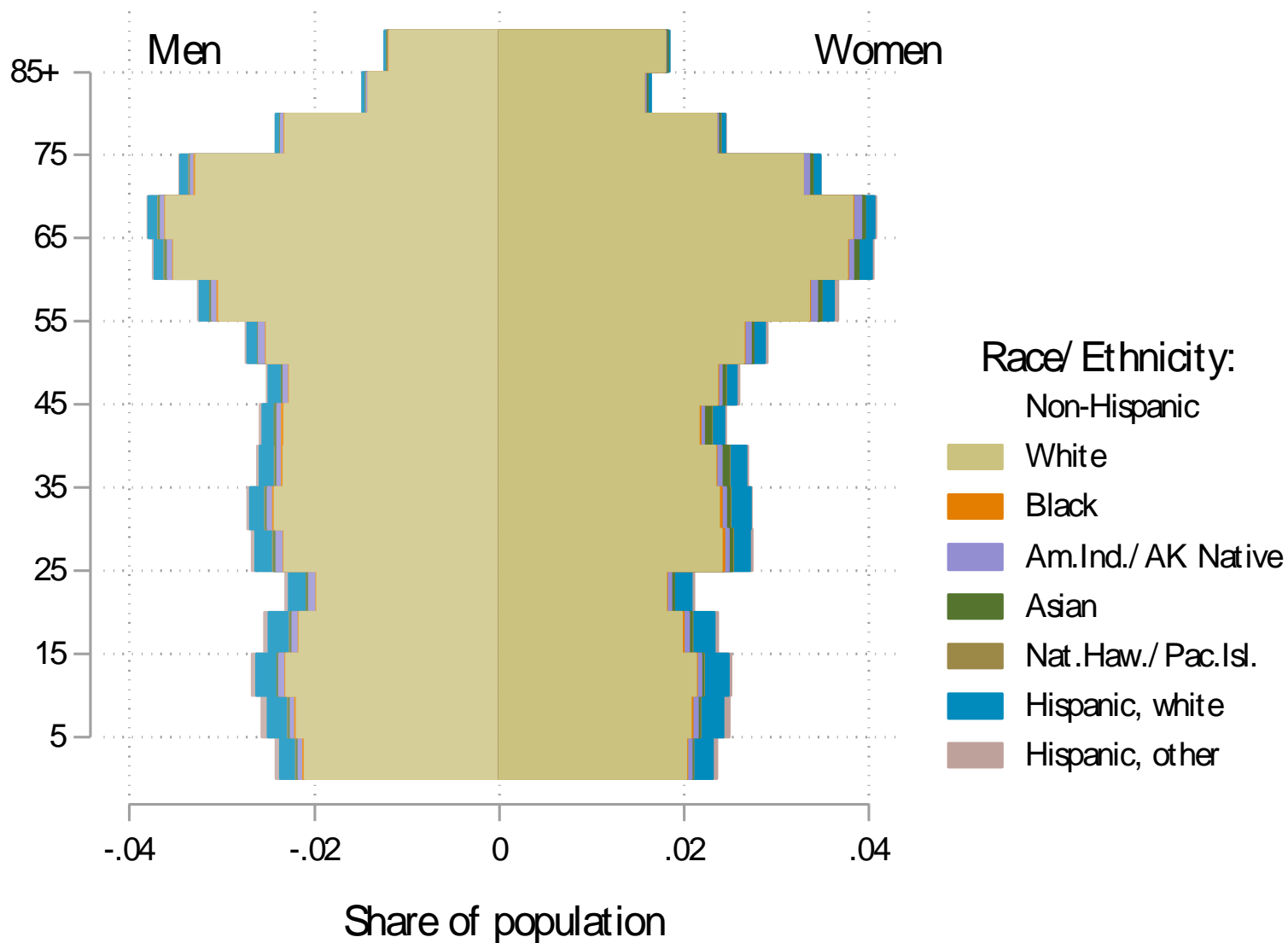
Source: Estimates by Population Research Center, PSU

Age Distribution, Douglas County

Age Group	2020 Estimate	2020 Percent of Total	Oregon 2020 Percent of Total
Total population	112,530	100.0%	100.0%
Under age 5	5,257	4.7%	5.4%
Age 5 to 17	14,888	13.2%	14.9%
Age 18 to 64	60,966	54.2%	61.1%
Age 65 and over	31,419	27.9%	18.6%

Source: PSU Population Research Center July 1, 2020 Population Estimates

Douglas County population by age & sex: 2019



Note: Men plotted on negative axis

Source: Estimates by US Census Bureau

Race and Ethnicity, Douglas County

	2010 Census	2010 Census Percent	2015-19 ACS Estimate	2015-19 ACS Percent	Oregon 2015-19 ACS Percent
HISPANIC OR LATINO AND RACE					
Total population	107,667	100.0%	109,114	100.0%	100.0%
Hispanic or Latino	5,055	4.7%	6,337	5.8%*	13.0%
Not Hispanic or Latino	102,612	95.3%	102,777	94.2%*	87.0%
White alone	96,343	89.5%	95,842	87.8%*	75.7%
Black or African American alone	279	0.3%	462	0.4%	1.8%
American Indian and Alaska Native alone	1,799	1.7%	966	0.9%*	0.9%
Asian alone	1,008	0.9%	1,078	1.0%	4.3%
Native Hawaiian and Other Pacific Islander alone	110	0.1%	65	0.1%	0.4%
Some Other Race alone	154	0.1%	64	0.1%	0.1%
Two or More Races	2,919	2.7%	4,300	3.9%*	3.7%

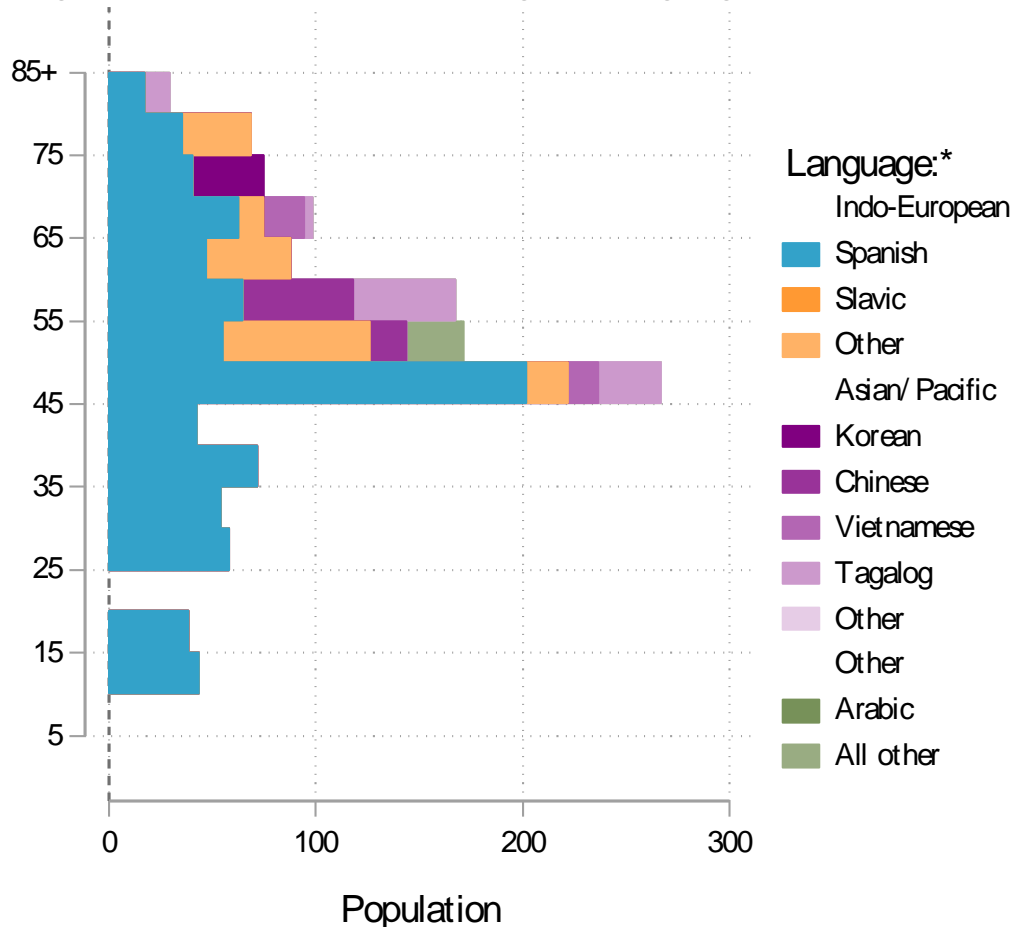
	2010 Census	2010 Census Percent	2015-19 ACS Estimate	2015-19 ACS Percent	Oregon 2015-19 ACS Percent
RACE ALONE OR IN COMBINATION WITH ONE OR MORE OTHER RACES**					
White	102,797	95.5%	105,534	96.7%*	88.8%
Black or African American	732	0.7%	868	0.8%*	2.9%
American Indian and Alaska Native	4,087	3.8%	4,485	4.1%*	3.1%
Asian	1,694	1.6%	1,944	1.8%*	6.0%
Native Hawaiian and Other Pacific Islander	405	0.4%	417	0.4%	0.8%
Some Other Race	1,697	1.6%	912	0.8%*	3.6%

Source: U.S. Census Bureau, 2010 Census and 2019 5-year American Community Survey estimates.

* Difference between 2010 Census and 2015-19 ACS is statistically significant at the 90% confidence level.

** Total may add to more than 100% due to persons identifying as more than one race.

Douglas County population by age & language: 2019



Language Spoken at Home Speak English less than "very well" Douglas County

Languages	Estimate
Total Population Age 5 and Older	103,467
Speaking English less than "very well"	1,380
Spanish	838
Russian, Polish, or other Slavic languages	29
Other Indo-European languages	153
Korean	19
Chinese (incl. Cantonese and Mandarin)	200
Vietnamese	42
Tagalog (incl. Filipino)	43
Other Asian and Pacific Island languages	4
Arabic	0
Other languages	52

Source: U.S. Census Bureau American Community Survey 2019 5-year estimates, Table C16001.

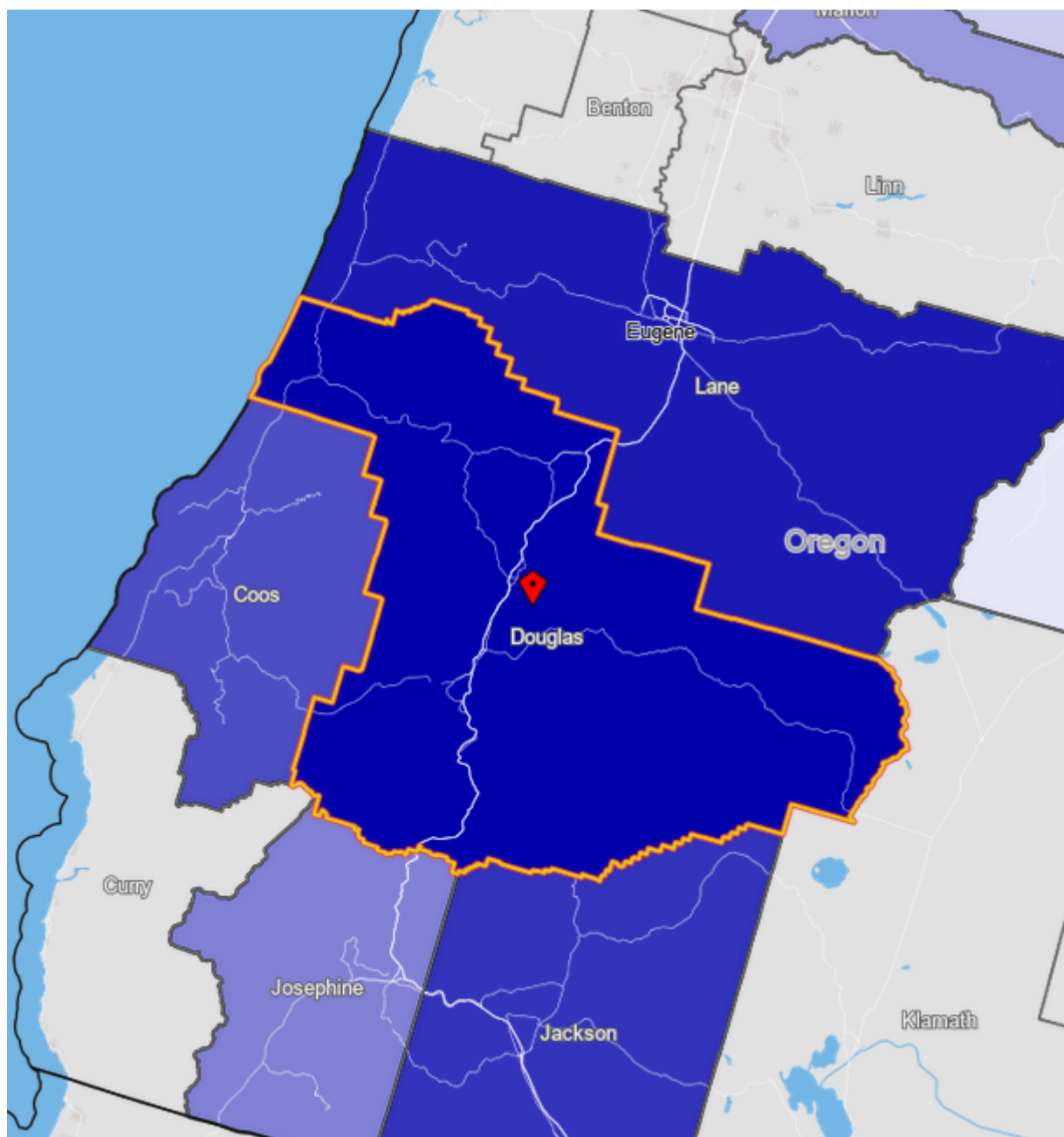
Note: * Languages for persons who speak English less than very well.
Source: ACS tables B16004, C16001, PUMS; PEP estimates; Analysis by PRC, PSU

[Link to Table C16001](#) for all counties, including margins of error.

[Visualization](#) of language data by census tract within county.

Douglas County

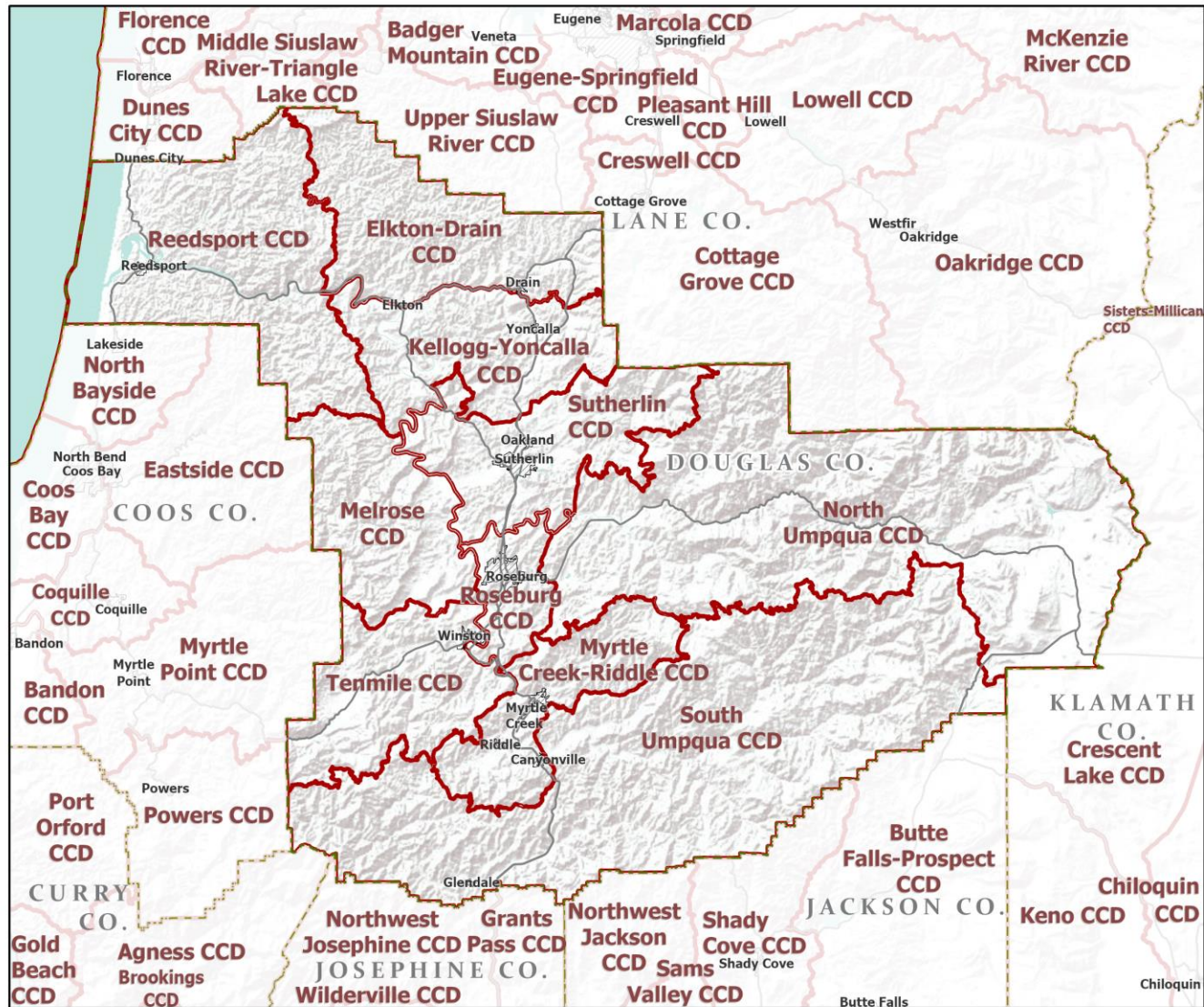
Commute Flows



Jobs Counts by Counties Where Workers are Employed - All Jobs

2018		
	Count	Share
All Counties	40,408	100.0%
Douglas County, OR	27,609	68.3%
Lane County, OR	3,773	9.3%
Jackson County, OR	1,891	4.7%
Coos County, OR	1,415	3.5%
Multnomah County, OR	929	2.3%
Josephine County, OR	878	2.2%
Marion County, OR	593	1.5%
Washington County, OR	516	1.3%
Clackamas County, OR	383	0.9%
Deschutes County, OR	326	0.8%
All Other Locations	2,095	5.2%

County Subdivisions (CCDs): Douglas County



0 80 Miles



Portland State University,
Population Research Center,
May 2021.
www.pdx.edu/prc

Sources: Esri, USGS, NOAA
State of Oregon GEO;
Oregon Dept. of
Transportation.

Douglas County Employment by Sector by Census County Division (1 of 2)

Sector	Oregon	County Total	Elkton- Drain CCD	Kellogg- Yoncalla CCD	Melrose CCD	Myrtle Creek- Riddle CCD	North Umpqua CCD
Total, All Jobs*	1,904,601	37,495	547	484	533	3,886	1,372
Goods-Producing	18.6%	24.0%	32.2%	49.0%	46.9%	38.0%	55.9%
Natural Resources and Mining	2.7%	4.9%	10.2%	21.3%	21.0%	10.0%	29.9%
Construction	5.9%	5.3%	5.5%	13.6%	9.6%	2.6%	3.8%
Manufacturing	10.0%	13.8%	16.5%	14.0%	16.3%	25.4%	22.2%
Service Providing	81.4%	76.0%	67.8%	51.0%	53.1%	62.0%	44.1%
Trade, Transportation, and Utilities	18.6%	16.6%	18.3%	15.9%	8.4%	17.1%	8.7%
Information	2.0%	0.7%	0.4%	0.2%	0.0%	0.2%	0.4%
Financial Activities	4.6%	2.9%	2.9%	0.4%	1.3%	3.2%	0.8%
Professional and Business Services	13.4%	10.8%	2.9%	3.1%	10.1%	4.3%	1.7%
Education and Health Services	23.1%	24.0%	19.0%	13.8%	24.4%	10.4%	14.8%
Leisure and Hospitality	11.4%	10.2%	10.4%	11.8%	0.2%	22.8%	8.4%
Other Services	4.2%	4.8%	7.7%	4.5%	8.6%	2.7%	2.4%
Public Administration	4.2%	5.9%	6.2%	1.2%	0.0%	1.3%	6.9%

Continued on next slide

Source: U.S. Census Bureau, LEHD Origin-Destination Employment Statistics, 2018 Q2

* Jobs covered by unemployment insurance and federal workers.

Douglas County Employment by Sector by Census County Division (2 of 2)

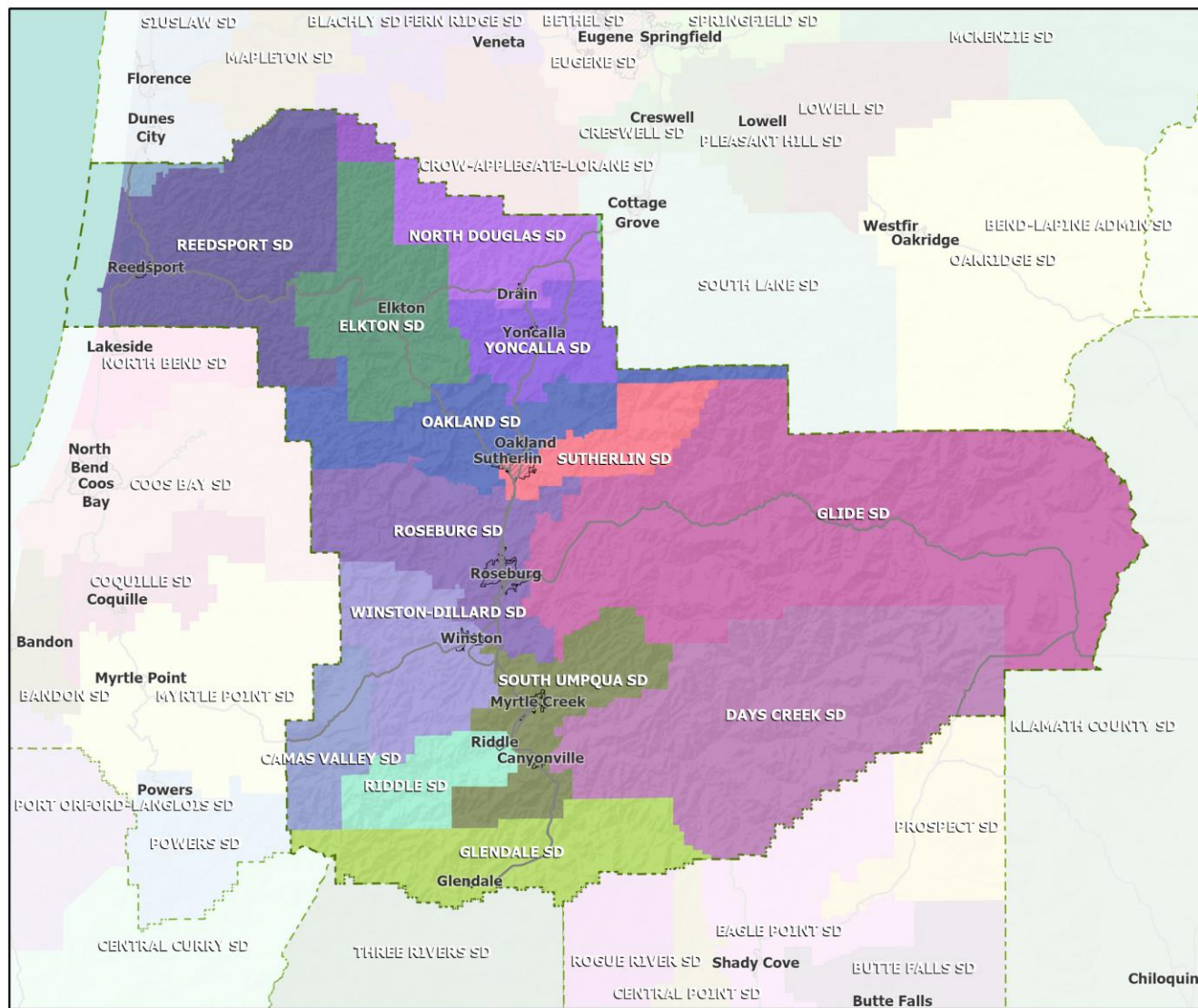
Continued from previous slide

Sector	Oregon	County Total	Reedsport CCD	Roseburg CCD	South Umpqua CCD	Sutherlin CCD	Tenmile CCD
Total, All Jobs*	1,904,601	37,495	1,553	22,215	945	3,084	2,876
Goods-Producing	18.6%	24.0%	16.5%	11.9%	40.2%	41.3%	54.2%
Natural Resources and Mining	2.7%	4.9%	3.0%	1.9%	3.1%	4.7%	4.6%
Construction	5.9%	5.3%	3.9%	5.7%	1.7%	9.6%	1.3%
Manufacturing	10.0%	13.8%	9.7%	4.3%	35.4%	27.1%	48.3%
Service Providing	81.4%	76.0%	83.5%	88.1%	59.8%	58.7%	45.8%
Trade, Transportation, and Utilities	18.6%	16.6%	12.9%	17.7%	22.2%	17.3%	11.5%
Information	2.0%	0.7%	0.0%	1.0%	0.6%	0.2%	0.3%
Financial Activities	4.6%	2.9%	4.3%	3.4%	0.4%	3.0%	0.5%
Professional and Business Services	13.4%	10.8%	18.5%	13.5%	11.5%	5.4%	7.7%
Education and Health Services	23.1%	24.0%	24.5%	30.4%	16.3%	15.1%	11.3%
Leisure and Hospitality	11.4%	10.2%	14.0%	8.4%	2.9%	9.9%	10.2%
Other Services	4.2%	4.8%	6.4%	5.2%	5.1%	5.9%	3.1%
Public Administration	4.2%	5.9%	2.8%	8.5%	0.7%	1.8%	1.4%

Source: U.S. Census Bureau, LEHD Origin-Destination Employment Statistics, 2018 Q2

* Jobs covered by unemployment insurance and federal workers.

School Districts: Douglas County



- Counties
- Incorporated Cities
- Highways

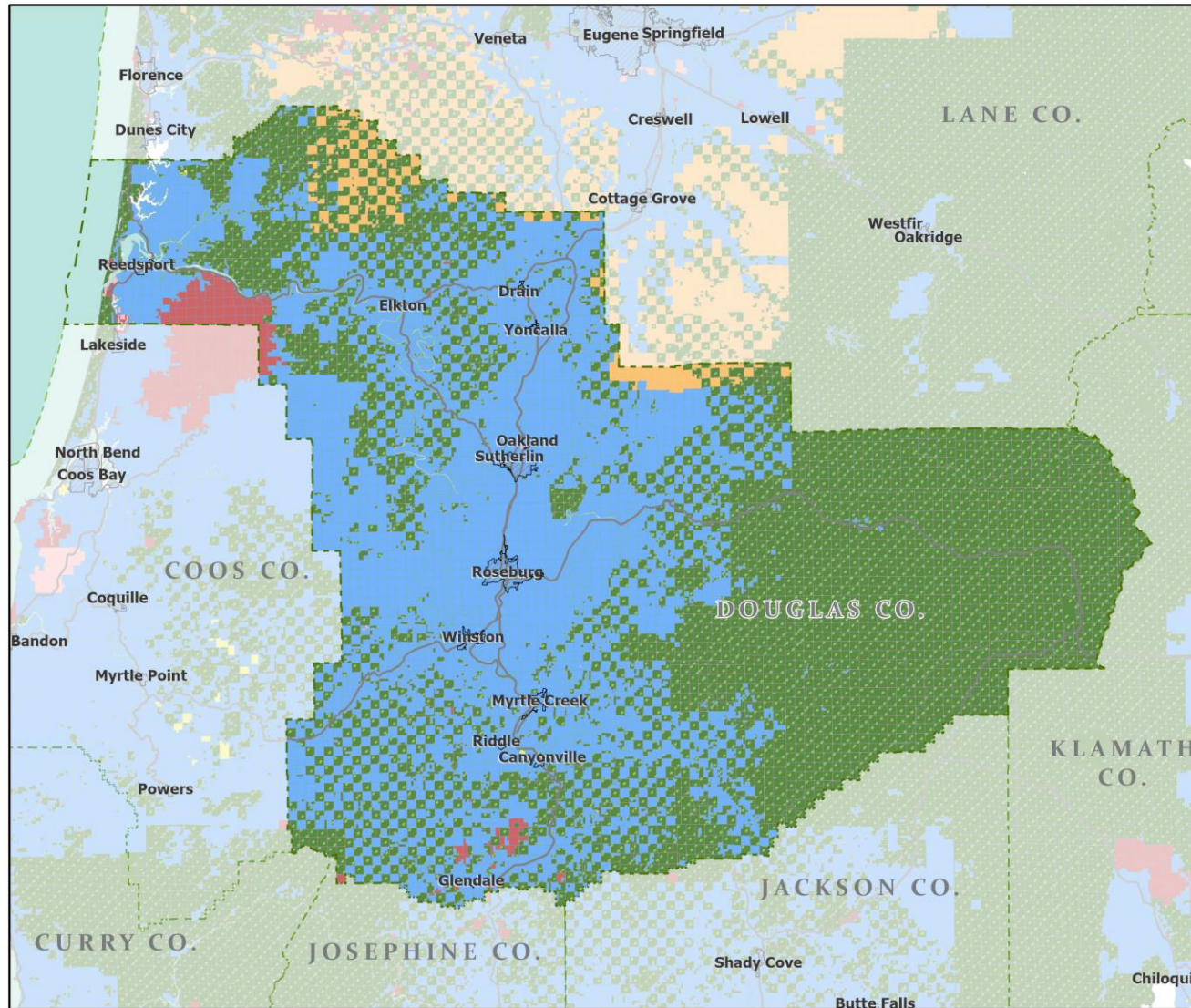


Portland State University,
Population Research Center,
May 2021.
www.pdx.edu/prc

Sources: Esri, USGS, NOAA
State of Oregon GEO;
Oregon Dept. of
Transportation.



Land Ownership: Douglas County

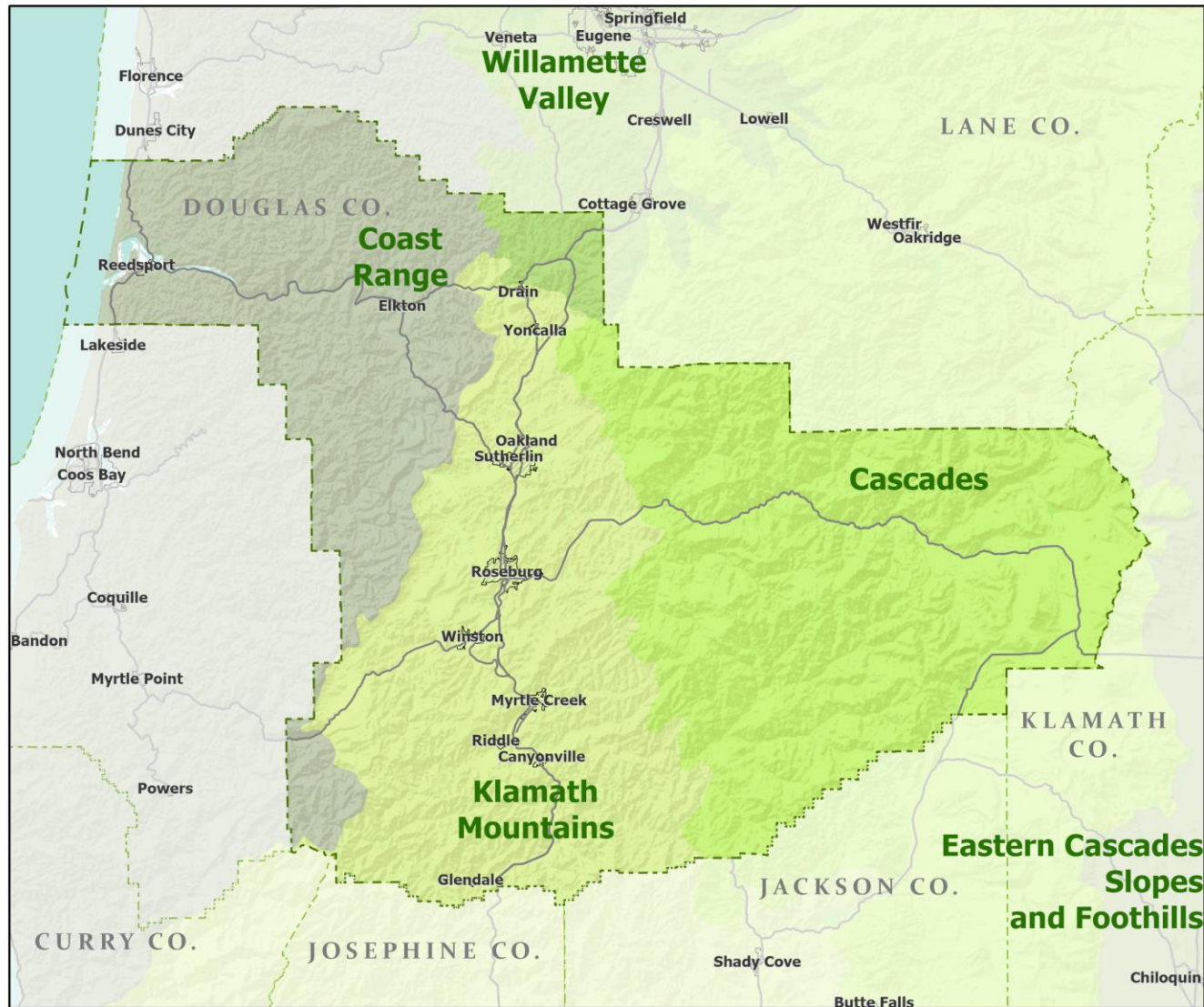


Portland State University,
Population Research Center,
May 2021.
www.pdx.edu/prc

Sources: Esri, USGS, NOAA
State of Oregon GEO;
Oregon Dept. of
Transportation.



Ecoregions: Douglas County



Counties

Incorporated Cities

Highways

LEVEL III ECOREGIONS OF OREGON (2006)

Cascades

Coast Range

Eastern Cascades Slopes and Foothills

Klamath Mountains

Willamette Valley

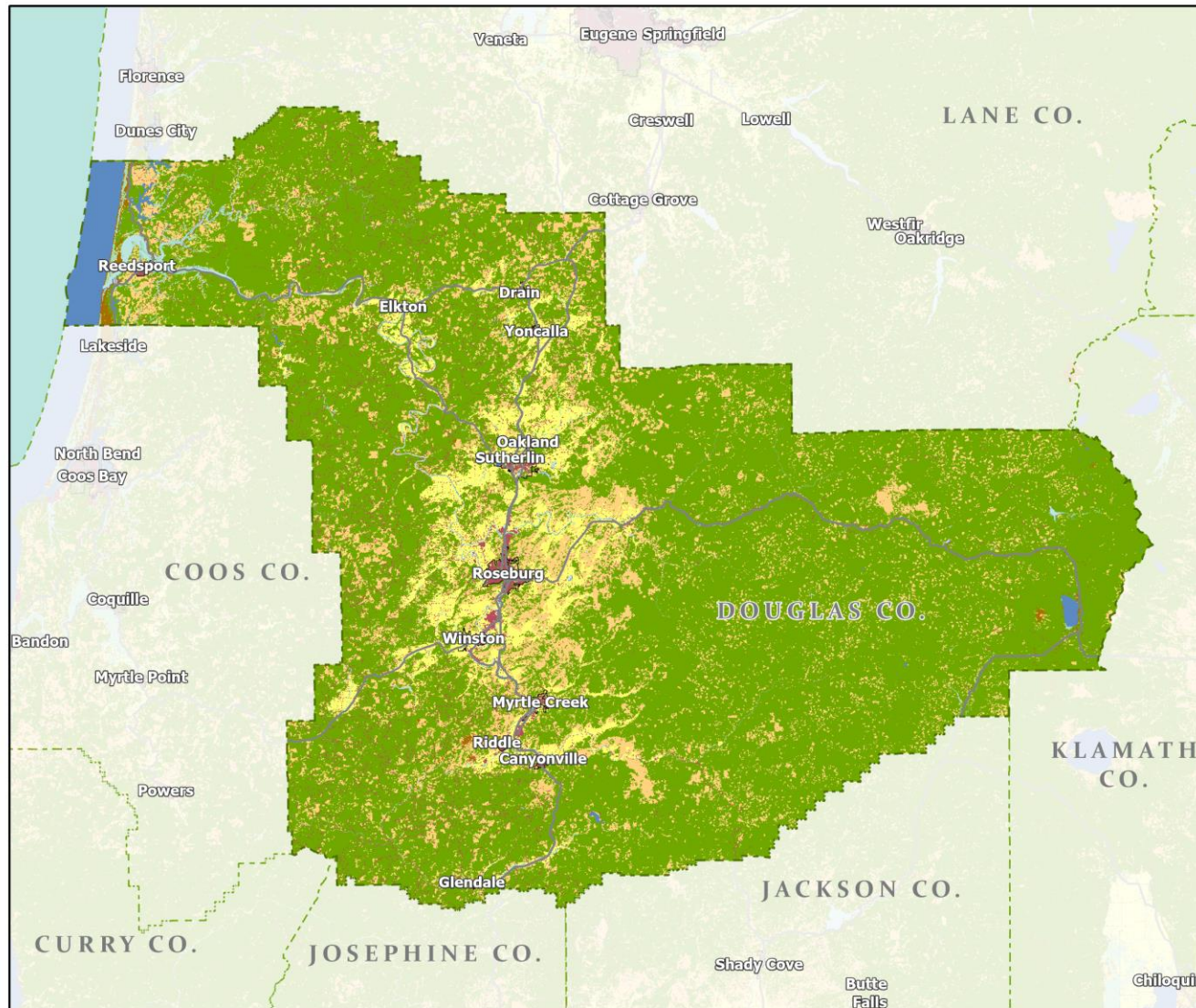


Portland State University,
Population Research Center,
May 2021.
www.pdx.edu/prc

Sources: Esri, USGS, NOAA
State of Oregon GEO;
Oregon Dept. of
Transportation.

0 80 Miles

Land Cover: Douglas County



- Counties
- Incorporated Cities
- Highways

NATIONAL LAND COVER

- Developed
- Cultivated Crops/Pasture/Hay
- Barren Land
- Forest
- Grasslands/Scrub/Sedge
- Lichens/Moss
- Wetlands
- Perennial Snow/Ice
- Open Water



Portland State University,
Population Research Center,
May 2021.
www.pdx.edu/prc

Sources: Esri, USGS, NOAA
State of Oregon GEO;
Oregon Dept. of
Transportation.

