

Lincoln County Overview

House and Senate Committees on Redistricting

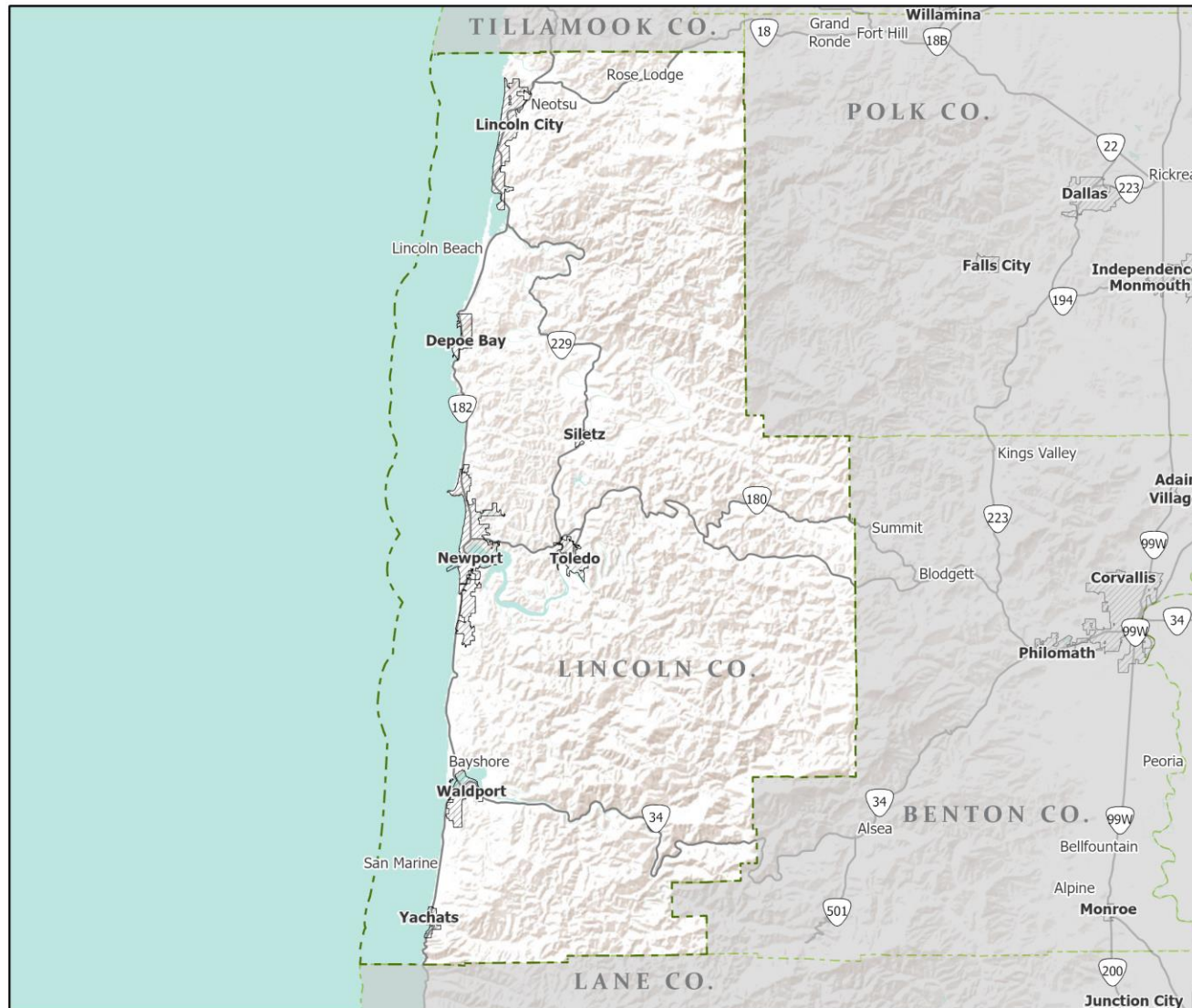
June 2, 2021

July 1, 2020 population estimate	48,305
Population rank	18th
Share of state population	1.1%
Density (per square mile)	48.7
Density rank	14th
Area (square miles)	992
Area rank	28th
Share of state area	1.0%



Sources: PSU Population Research Center; Oregon Blue Book.

Highways: Lincoln County



-  Counties
-  Incorporated Cities
-  Highways

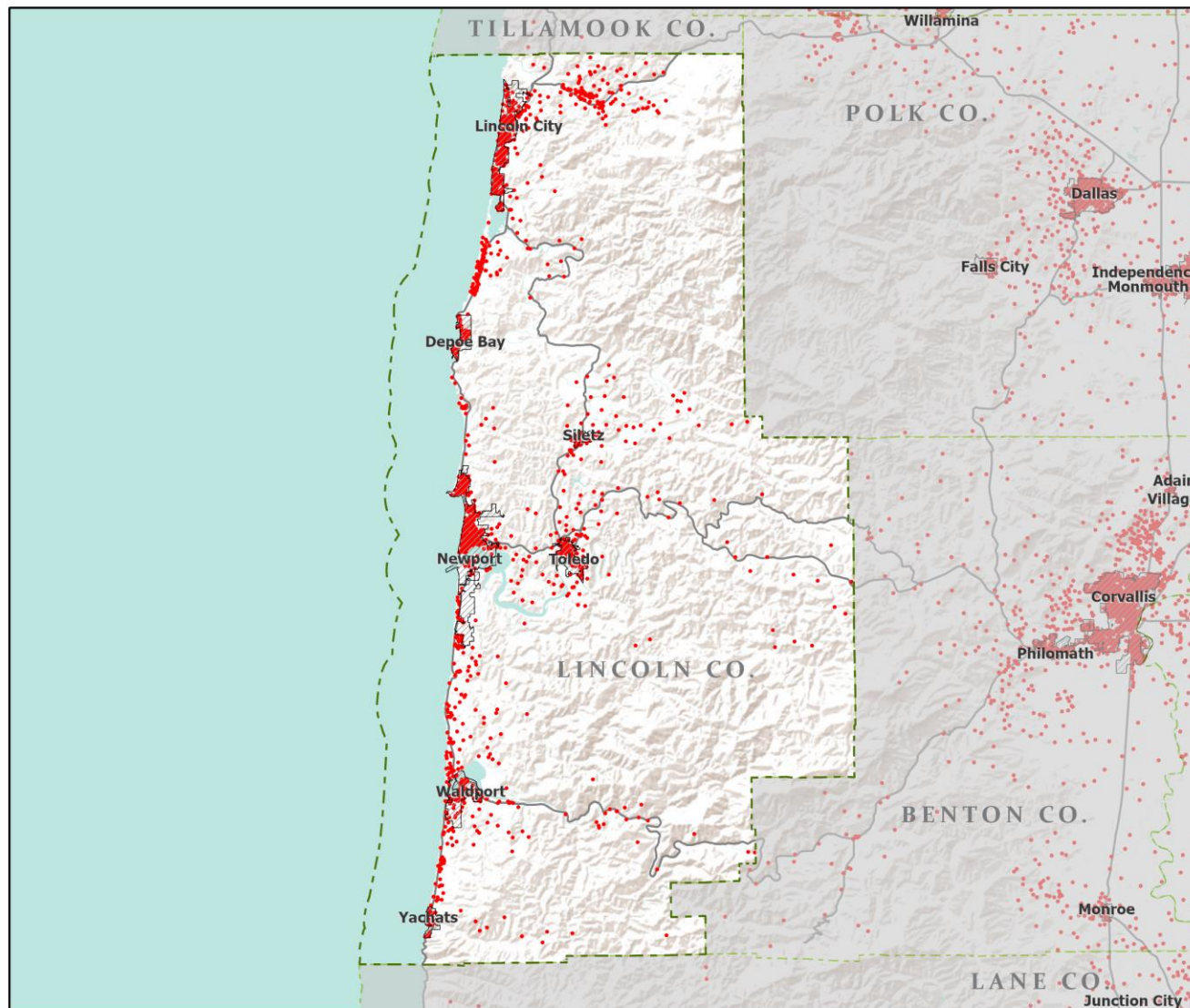


Portland State University,
Population Research Center,
May 2021.
www.pdx.edu/prc

Sources: Esri, USGS, NOAA
State of Oregon GEO;
Oregon Dept. of
Transportation.



Population: Lincoln County



- Counties
- Incorporated Cities
- Highways
- 2010 POPULATION
 - 1 Dot = 25 persons

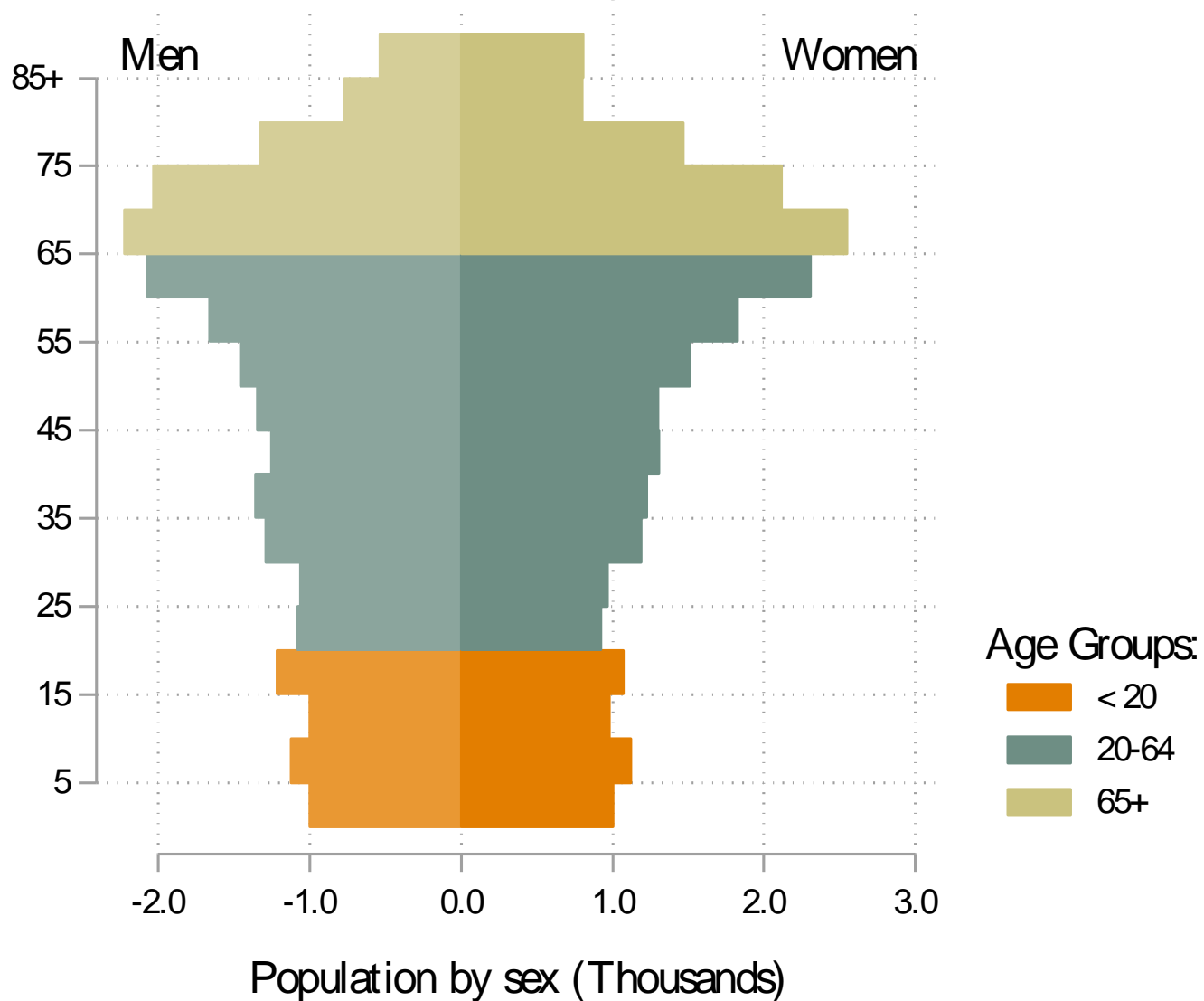


Portland State University,
Population Research Center,
May 2021.
www.pdx.edu/prc

Sources: Esri, USGS, NOAA
State of Oregon GEO;
Oregon Dept. of
Transportation.

0 50 Miles

Lincoln population by age & sex: 2020



Note: Men plotted on negative axis

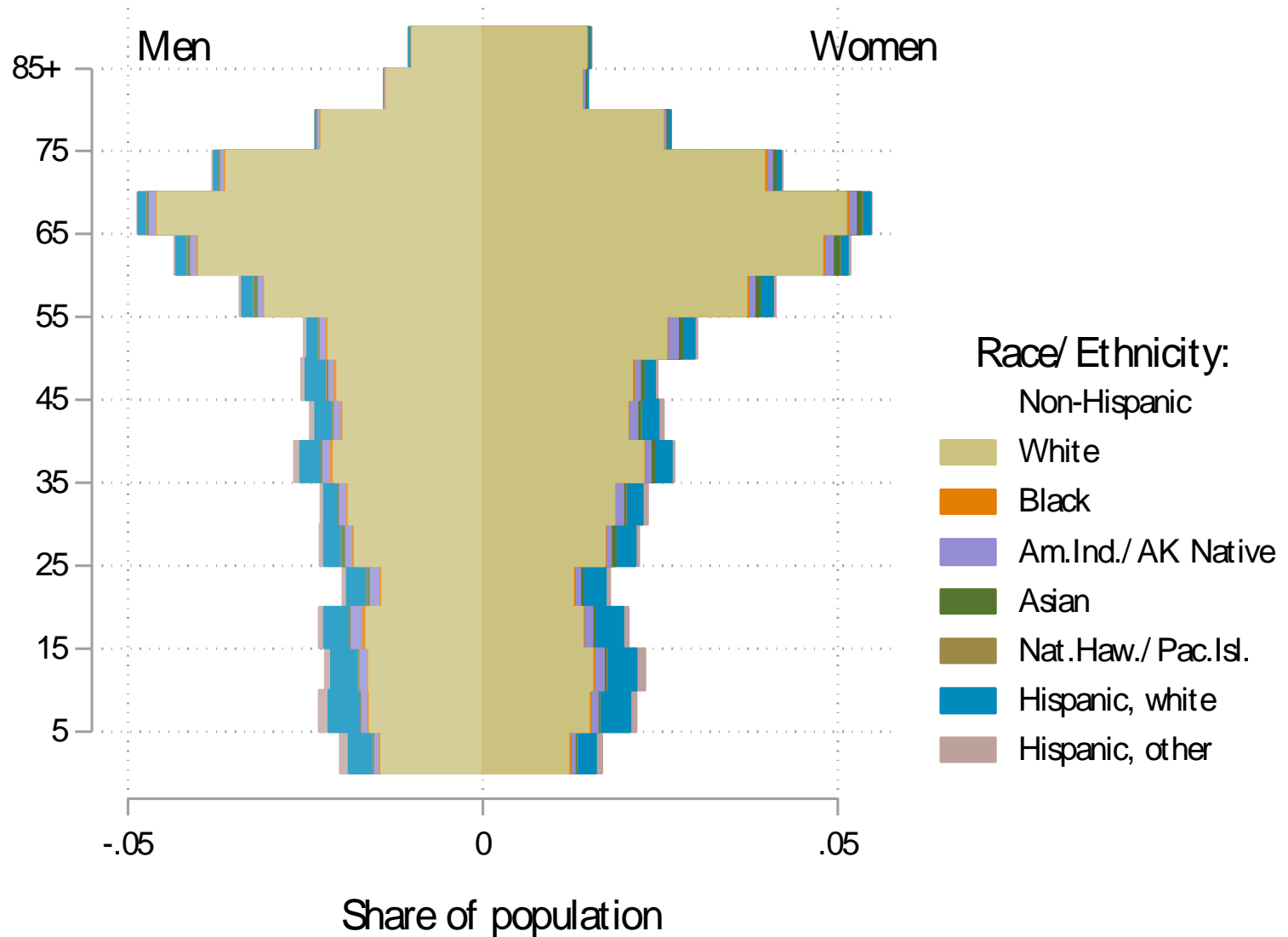
Source: Estimates by Population Research Center, PSU

Age Distribution, Lincoln County

Age Group	2020 Estimate	2020 Percent of Total	Oregon 2020 Percent of Total
Total population	48,305	100.0%	100.0%
Under age 5	2,002	4.1%	5.4%
Age 5 to 17	5,587	11.6%	14.9%
Age 18 to 64	26,084	54.0%	61.1%
Age 65 and over	14,632	30.3%	18.6%

Source: PSU Population Research Center July 1, 2020 Population Estimates

Lincoln County population by age & sex: 2019



Note: Men plotted on negative axis

Source: Estimates by US Census Bureau

Race and Ethnicity, Lincoln County

	2010 Census	2010 Census Percent	2015-19 ACS Estimate	2015-19 ACS Percent	Oregon 2015-19 ACS Percent
HISPANIC OR LATINO AND RACE					
Total population	46,034	100.0%	48,547	100.0%	100.0%
Hispanic or Latino	3,655	7.9%	4,447	9.2%*	13.0%
Not Hispanic or Latino	42,379	92.1%	44,100	90.8%*	87.0%
White alone	38,863	84.4%	40,034	82.5%*	75.7%
Black or African American alone	159	0.3%	218	0.4%	1.8%
American Indian and Alaska Native alone	1,433	3.1%	1,193	2.5%*	0.9%
Asian alone	482	1.0%	603	1.2%	4.3%
Native Hawaiian and Other Pacific Islander alone	52	0.1%	96	0.2%	0.4%
Some Other Race alone	36	0.1%	0	0.0%	0.1%
Two or More Races	1,354	2.9%	1,956	4.0%*	3.7%

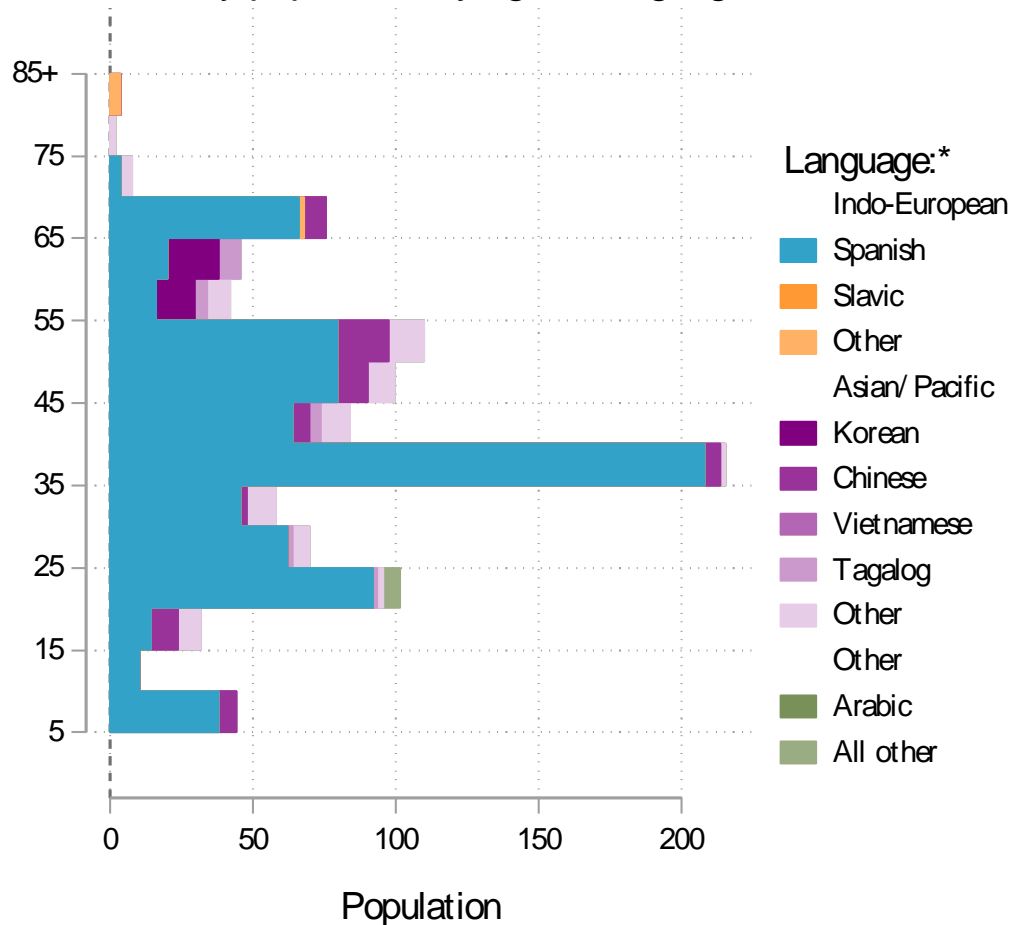
	2010 Census	2010 Census Percent	2015-19 ACS Estimate	2015-19 ACS Percent	Oregon 2015-19 ACS Percent
RACE ALONE OR IN COMBINATION WITH ONE OR MORE OTHER RACES**					
White	42,034	91.3%	44,984	92.7%*	88.8%
Black or African American	355	0.8%	599	1.2%*	2.9%
American Indian and Alaska Native	2,694	5.9%	2,813	5.8%	3.1%
Asian	769	1.7%	926	1.9%*	6.0%
Native Hawaiian and Other Pacific Islander	163	0.4%	162	0.3%	0.8%
Some Other Race	1,840	4.0%	1,354	2.8%*	3.6%

Source: U.S. Census Bureau, 2010 Census and 2019 5-year American Community Survey estimates.

* Difference between 2010 Census and 2015-19 ACS is statistically significant at the 90% confidence level.

** Total may add to more than 100% due to persons identifying as more than one race.

Lincoln County population by age & language: 2019



Note: * Languages for persons who speak English less than very well.
 Source: ACS tables B16004, C16001, PUMS; PEP estimates; Analysis by PRC, PSU

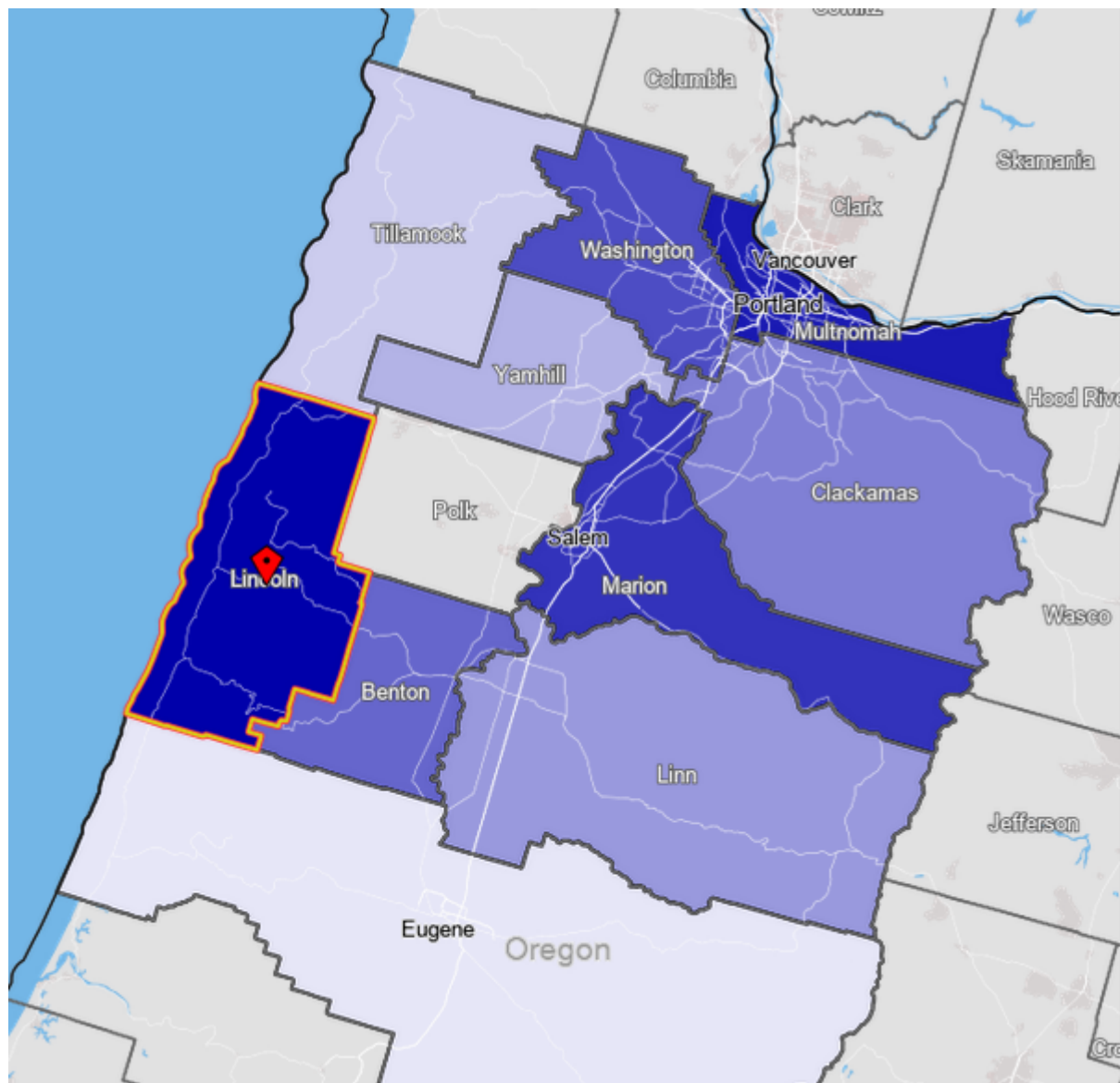
[Link to Table C16001](#) for all counties, including margins of error.

[Visualization](#) of language data by census tract within county.

Language Spoken at Home Speak English less than "very well" Lincoln County

Languages	Estimate
Total Population Age 5 and Older	46,372
Speaking English less than "very well"	1,049
Spanish	799
Russian, Polish, or other Slavic languages	0
Other Indo-European languages	26
Korean	40
Chinese (incl. Cantonese and Mandarin)	67
Vietnamese	0
Tagalog (incl. Filipino)	24
Other Asian and Pacific Island languages	75
Arabic	0
Other languages	18

Source: U.S. Census Bureau American Community Survey 2019 5-year estimates, Table C16001.



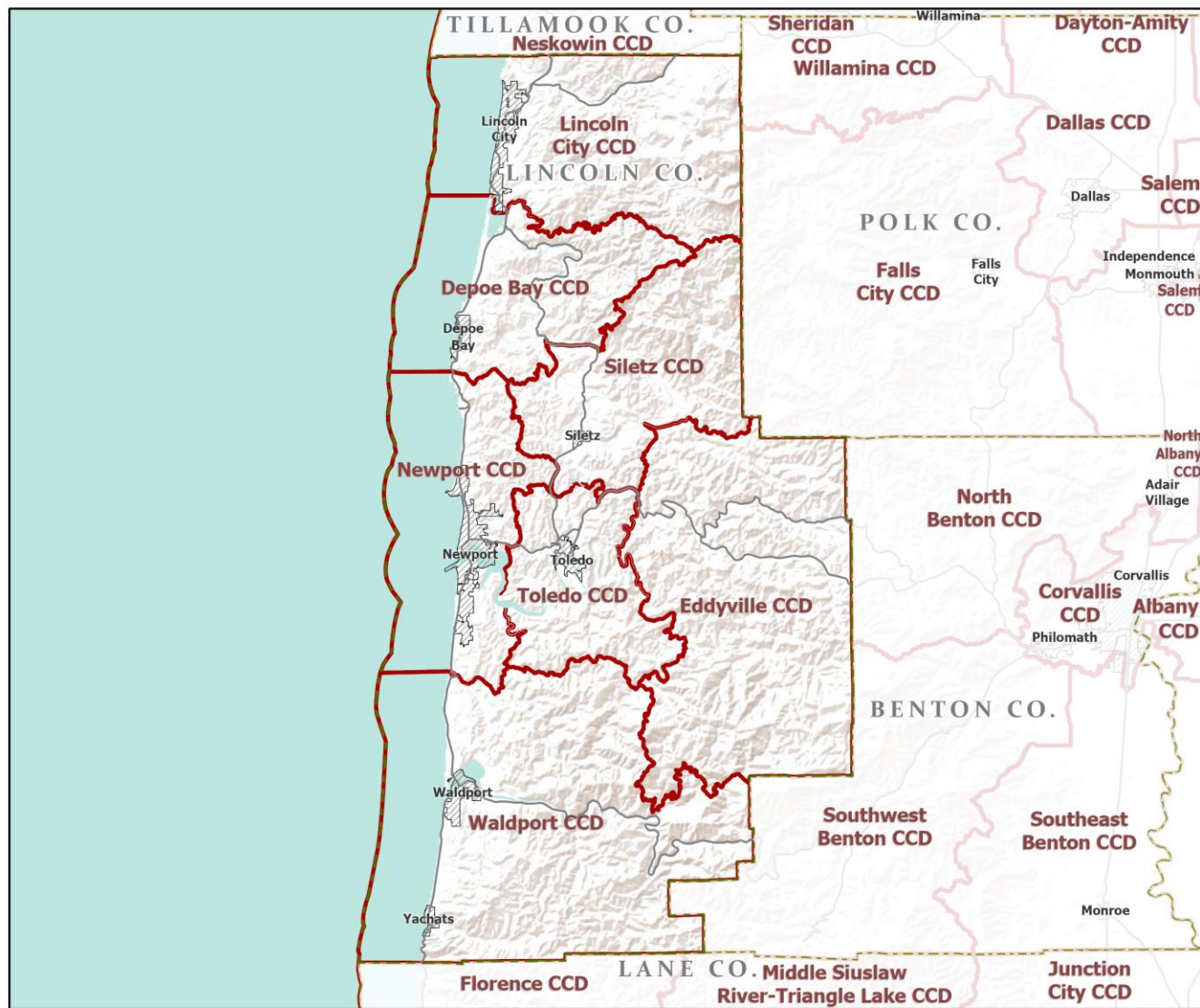
Lincoln County

Commute Flows

Jobs Counts by Counties Where Workers are Employed - All Jobs

	2018	
	Count	Share
All Counties	20,174	100.0%
Lincoln County, OR	11,583	57.4%
Multnomah County, OR	1,595	7.9%
Marion County, OR	1,174	5.8%
Washington County, OR	1,049	5.2%
Benton County, OR	711	3.5%
Clackamas County, OR	664	3.3%
Linn County, OR	515	2.6%
Yamhill County, OR	309	1.5%
Tillamook County, OR	283	1.4%
Lane County, OR	281	1.4%
All Other Locations	2,010	10.0%

County Subdivisions (CCDs): Lincoln County



- Counties
- Incorporated Cities
- Highways
- County Subdivisions (CCDs)



Portland State University,
Population Research Center,
May 2021.
www.pdx.edu/prc

Sources: Esri, USGS, NOAA
State of Oregon GEO;
Oregon Dept. of
Transportation.

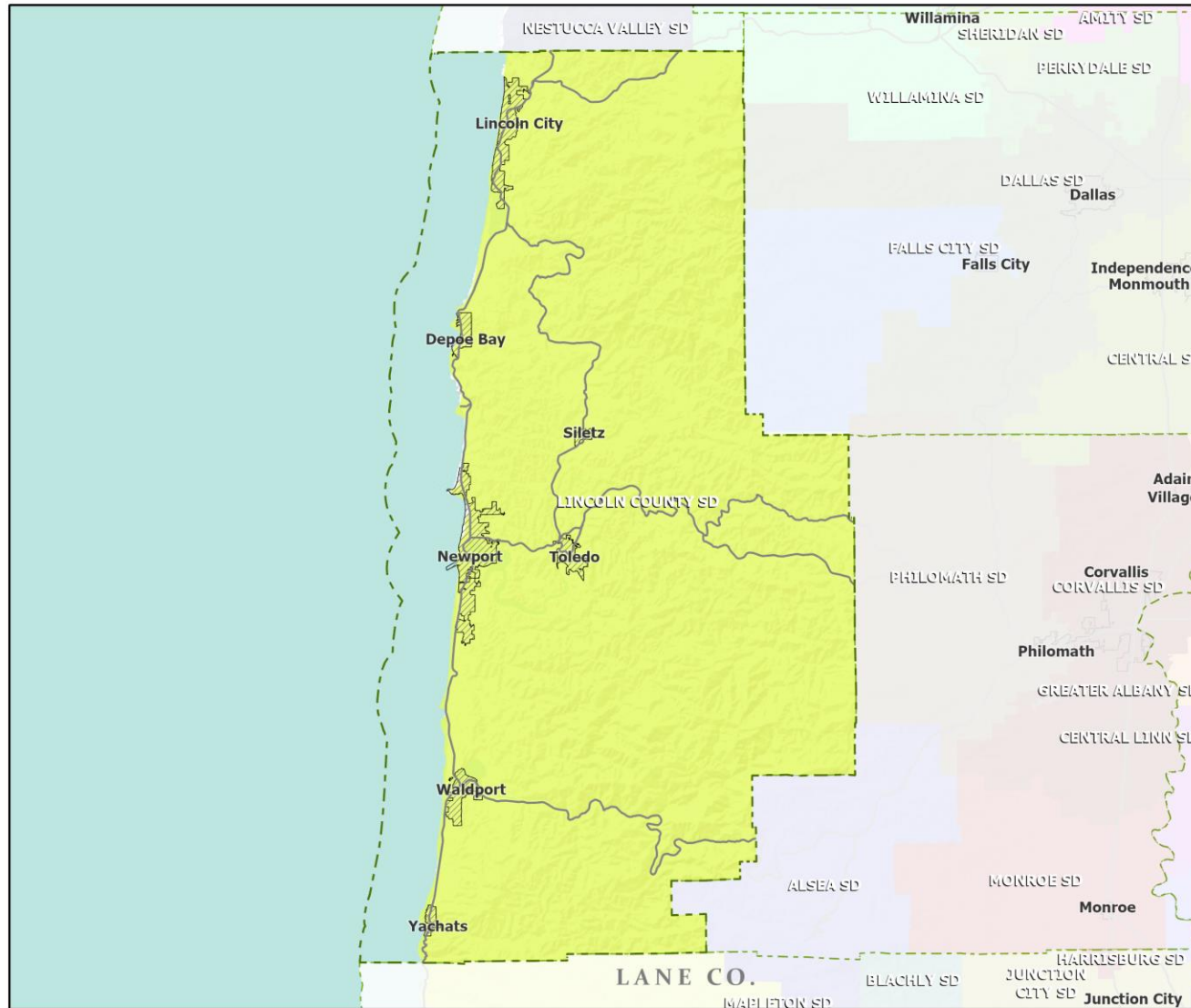
Lincoln County Employment by Sector by Census County Division

Sector	Oregon	County Total	Depoe Bay CCD	Eddyville CCD	Lincoln City CCD	Newport CCD	Siletz CCD	Toledo CCD	Waldport CCD
Total, All Jobs*	1,904,601	17,210	924	117	5,339	7,797	354	1,313	1,366
Goods-Producing	18.6%	12.5%	8.9%	47.0%	6.6%	11.1%	4.8%	47.2%	11.3%
Natural Resources and Mining	2.7%	2.0%	2.4%	29.9%	0.2%	1.3%	1.7%	11.0%	1.8%
Construction	5.9%	4.9%	4.2%	17.1%	5.9%	4.3%	0.6%	2.5%	6.8%
Manufacturing	10.0%	5.6%	2.3%	0.0%	0.5%	5.6%	2.5%	33.7%	2.7%
Service Providing	81.4%	87.5%	91.1%	53.0%	93.4%	88.9%	95.2%	52.8%	88.7%
Trade, Transportation, and Utilities	18.6%	17.5%	9.1%	11.1%	21.1%	16.1%	6.8%	21.8%	16.7%
Information	2.0%	0.9%	0.0%	0.9%	1.2%	1.0%	0.0%	0.1%	0.6%
Financial Activities	4.6%	3.2%	4.2%	0.0%	4.2%	3.0%	0.3%	0.8%	3.6%
Professional and Business Services	13.4%	6.8%	5.5%	4.3%	6.0%	8.6%	2.5%	3.9%	4.9%
Education and Health Services	23.1%	17.7%	4.0%	22.2%	13.6%	23.9%	19.5%	7.6%	16.5%
Leisure and Hospitality	11.4%	30.6%	59.8%	9.4%	40.5%	24.3%	4.2%	9.4%	37.3%
Other Services	4.2%	3.8%	5.2%	5.1%	3.3%	3.8%	3.7%	3.7%	5.3%
Public Administration	4.2%	6.9%	3.2%	0.0%	3.6%	8.2%	58.2%	5.4%	3.9%

Source: U.S. Census Bureau, LEHD Origin-Destination Employment Statistics, 2018 Q2

* Jobs covered by unemployment insurance and federal workers.

School Districts: Lincoln County



- Counties
- Incorporated Cities
- Highways

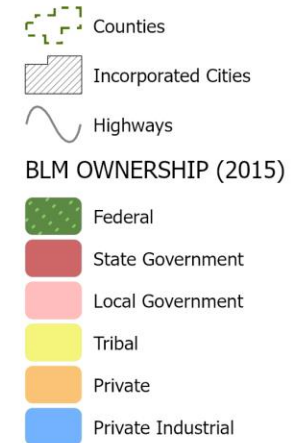
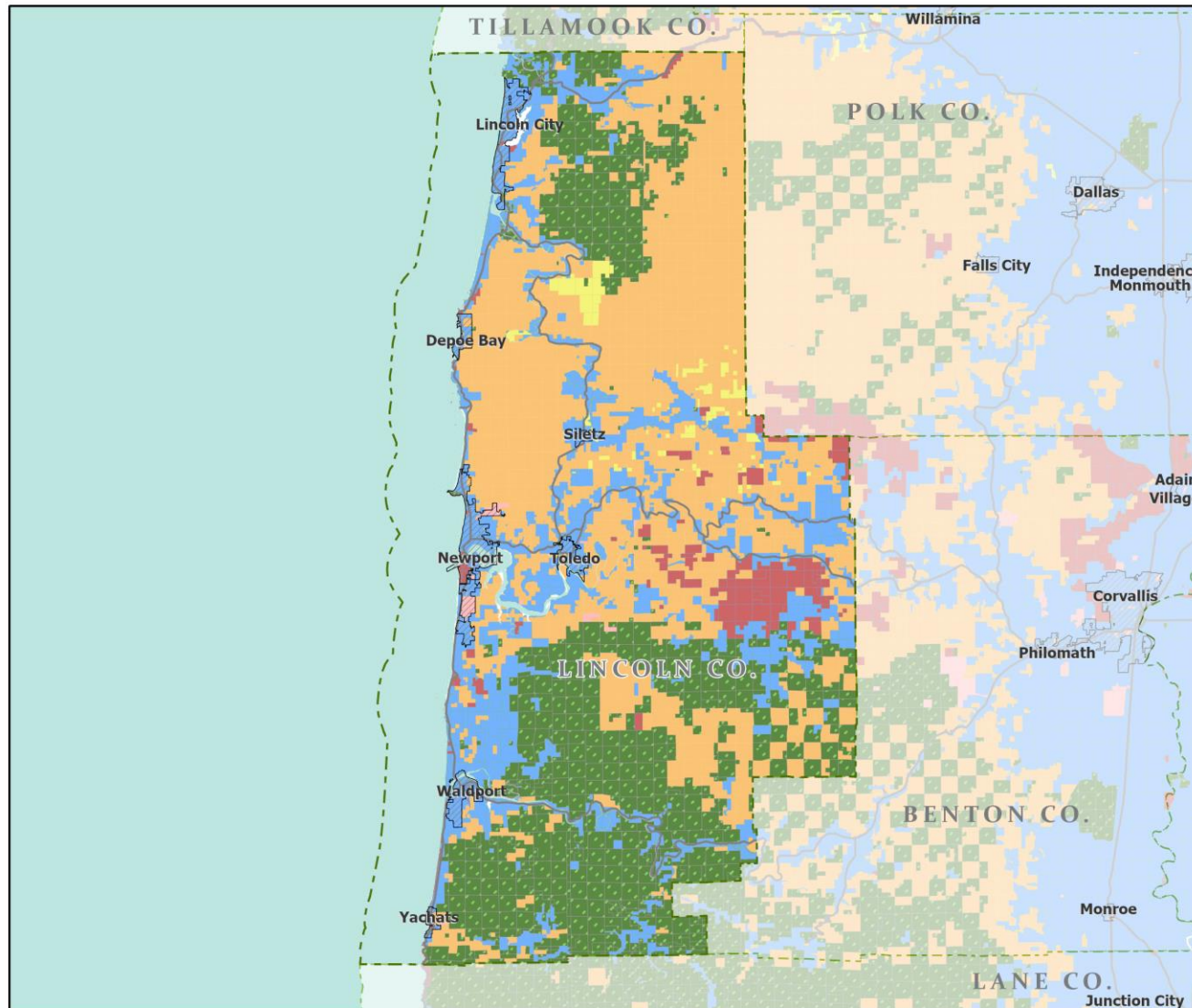


Portland State University,
Population Research Center,
May 2021.
www.pdx.edu/prc

Sources: Esri, USGS, NOAA
State of Oregon GEO;
Oregon Dept. of
Transportation.



Land Ownership: Lincoln County



Portland State University,
Population Research Center,
May 2021.
www.pdx.edu/prc

Sources: Esri, USGS, NOAA
State of Oregon GEO;
Oregon Dept. of
Transportation.



Ecoregions: Lincoln County



- Counties
- Incorporated Cities
- Highways
- LEVEL III ECOREGIONS OF OREGON (2006)
- Coast Range
- Willamette Valley

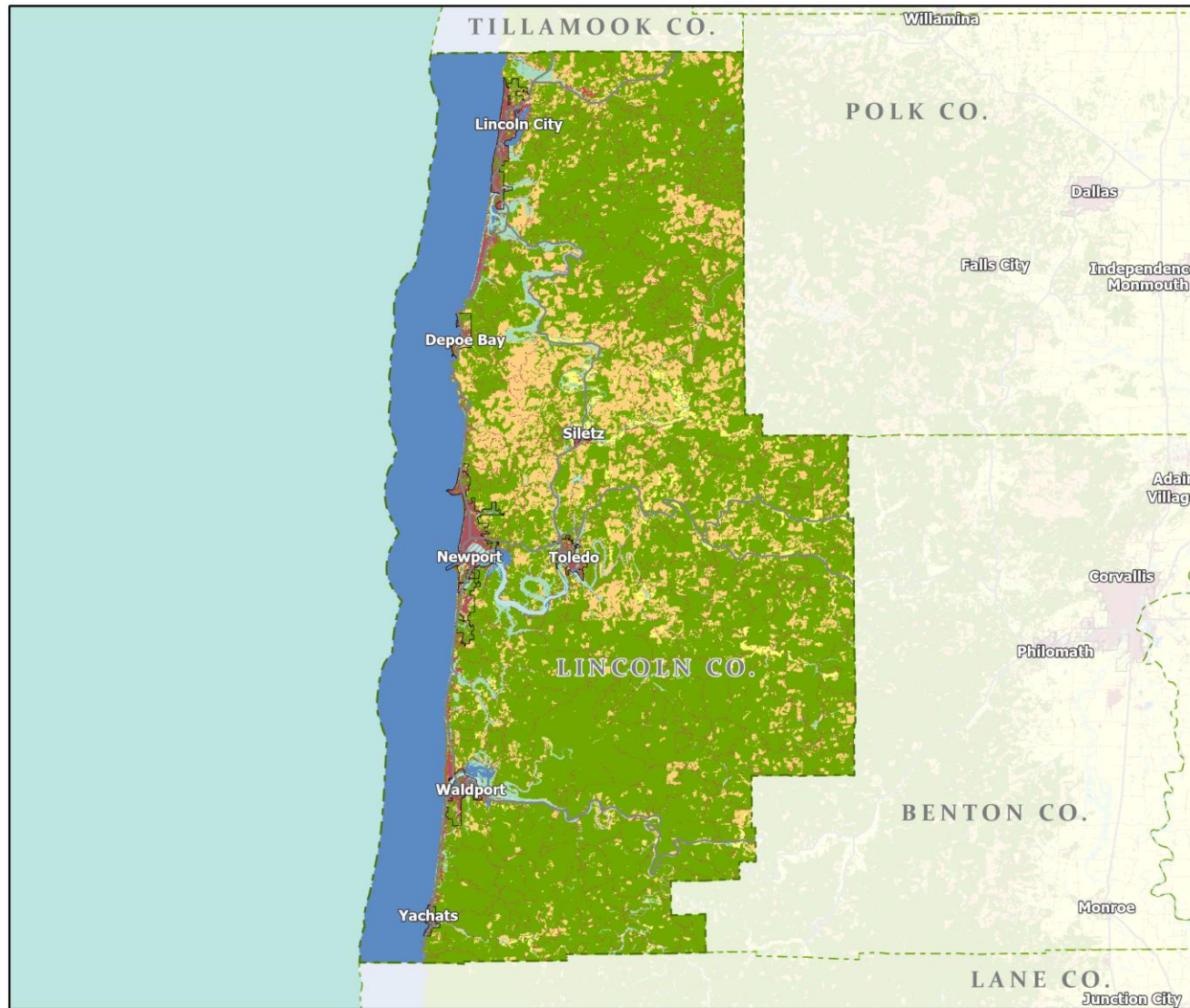


Portland State University,
Population Research Center,
May 2021.
www.pdx.edu/prc

Sources: Esri, USGS, NOAA
State of Oregon GEO;
Oregon Dept. of
Transportation.



Land Cover: Lincoln County



- Counties
- Incorporated Cities
- Highways

NATIONAL LAND COVER

- Developed
- Cultivated Crops/Pasture/Hay
- Barren Land
- Forest
- Grasslands/Scrub/Sedge
- Lichens/Moss
- Wetlands
- Perennial Snow/Ice
- Open Water



Portland State University,
Population Research Center,
May 2021.
www.pdx.edu/prc

Sources: Esri, USGS, NOAA
State of Oregon GEO;
Oregon Dept. of
Transportation.

0 50 Miles