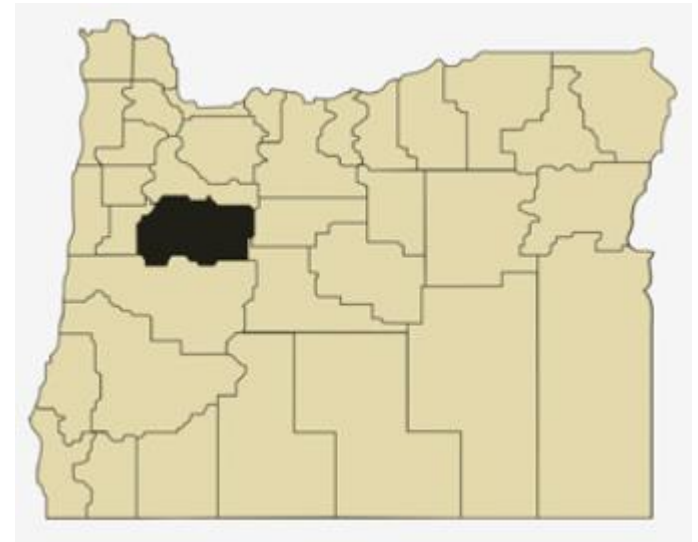


Linn County Overview

House and Senate Committees on Redistricting

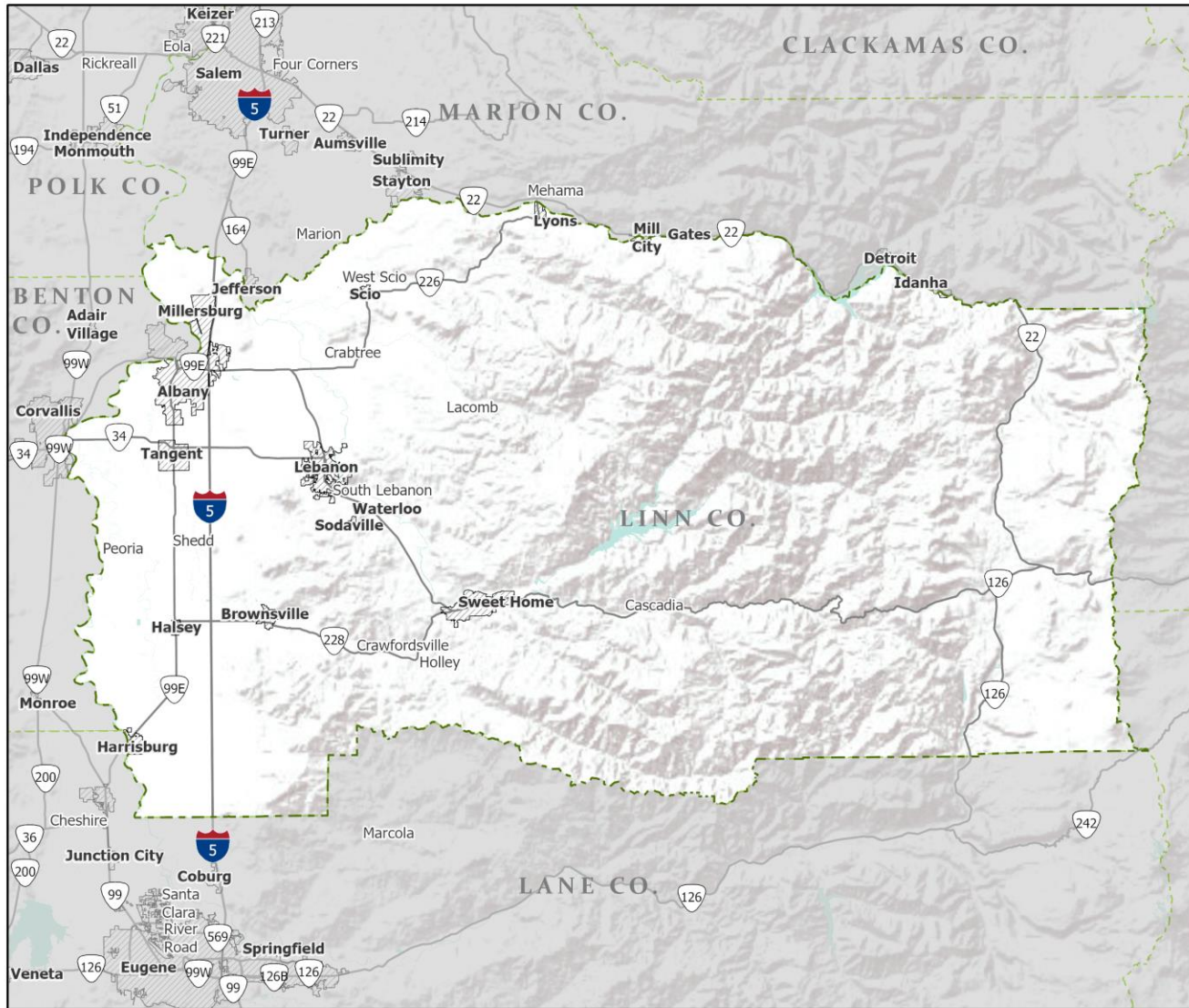
June 2, 2021

July 1, 2020 population estimate	127,320
Population rank	8th
Share of state population	3.0%
Density (per square mile)	55.4
Density rank	12th
Area (square miles)	2,297
Area rank	15th
Share of state area	2.4%



Sources: PSU Population Research Center; Oregon Blue Book.

Highways: Linn County



-  Counties
-  Incorporated Cities
-  Highways

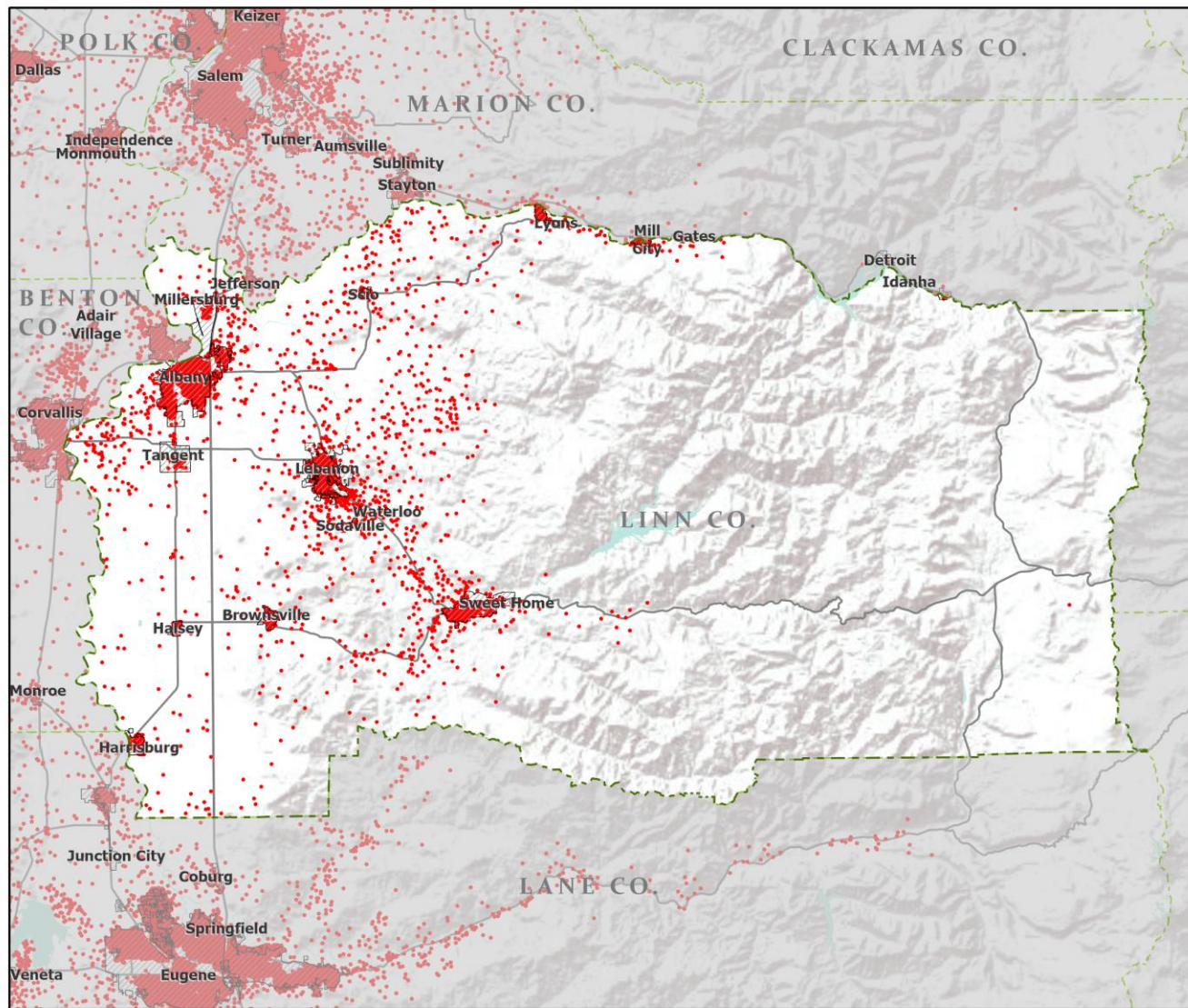


Portland State University,
Population Research Center,
May 2021.
www.pdx.edu/prc

Sources: Esri, USGS, NOAA
State of Oregon GEO;
Oregon Dept. of
Transportation.

0 50
Miles

Population: Linn County



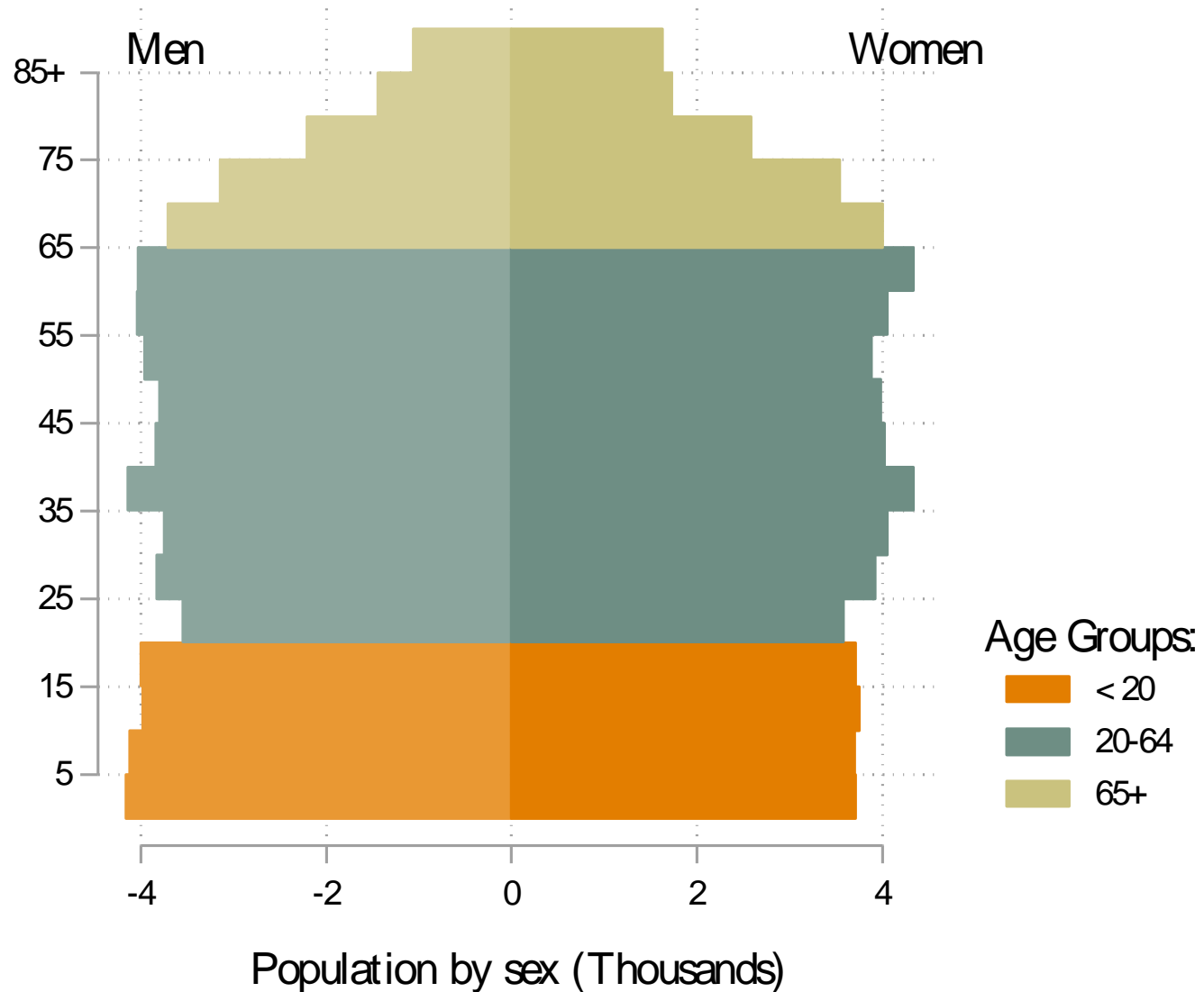
- Counties
- Incorporated Cities
- Highways
- 2010 POPULATION
 - 1 Dot = 25 persons



Portland State University,
Population Research Center,
May 2021.
www.pdx.edu/prc

Sources: Esri, USGS, NOAA
State of Oregon GEO;
Oregon Dept. of
Transportation.

Linn population by age & sex: 2020



Note: Men plotted on negative axis

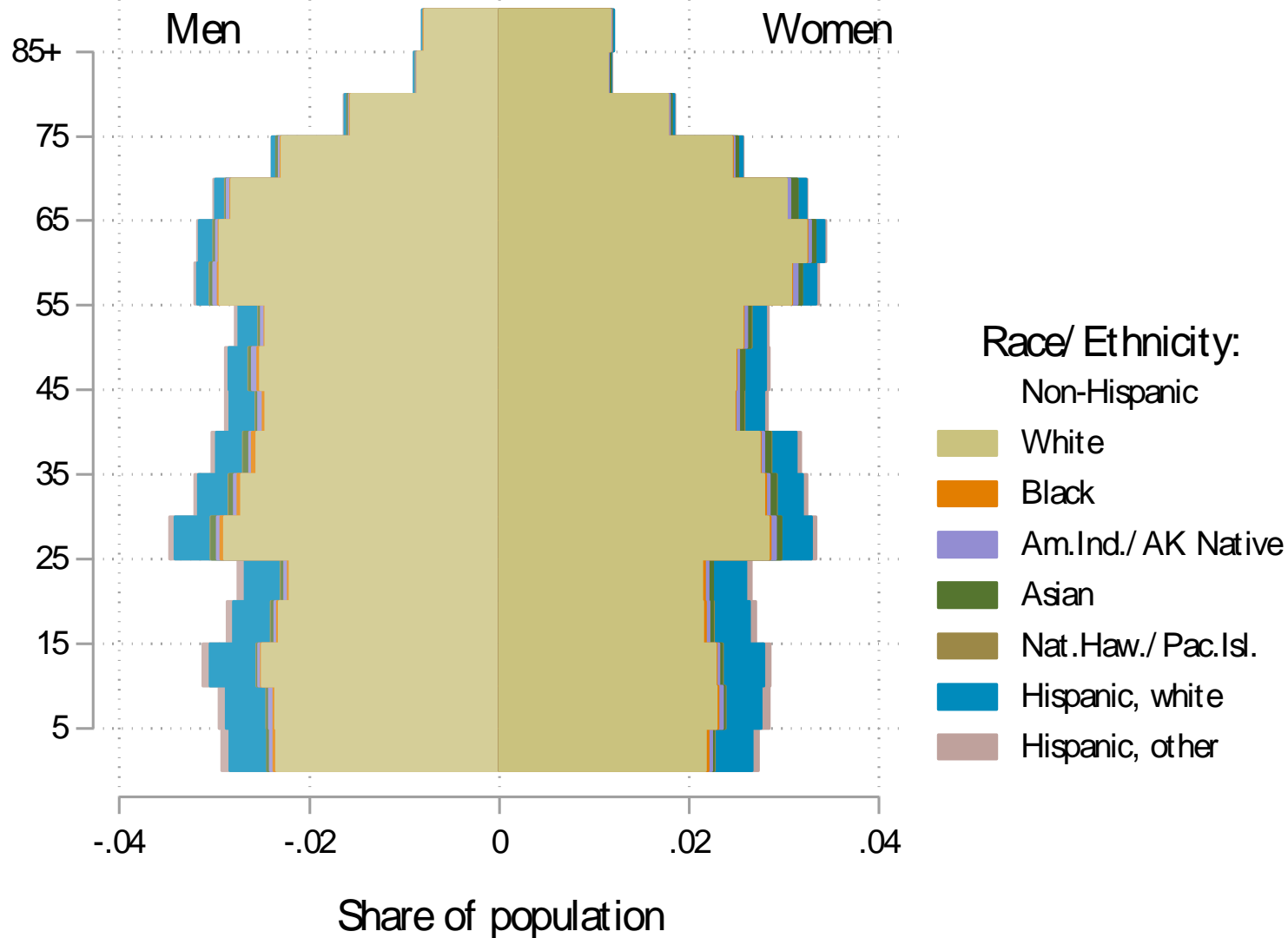
Source: Estimates by Population Research Center, PSU

Age Distribution, Linn County

Age Group	2020 Estimate	2020 Percent of Total	Oregon 2020 Percent of Total
Total population	127,320	100.0%	100.0%
Under age 5	7,882	6.2%	5.4%
Age 5 to 17	20,133	15.8%	14.9%
Age 18 to 64	74,225	58.3%	61.1%
Age 65 and over	25,079	19.7%	18.6%

Source: PSU Population Research Center July 1, 2020 Population Estimates

Linn County population by age & sex: 2019



Note: Men plotted on negative axis

Source: Estimates by US Census Bureau

Race and Ethnicity, Linn County

HISPANIC OR LATINO AND RACE	2010 Census	2010 Census Percent	2015-19 ACS Estimate	2015-19 ACS Percent	Oregon 2015-19 ACS Percent
Total population	116,672	100.0%	125,048	100.0%	100.0%
Hispanic or Latino	9,127	7.8%	11,393	9.1%*	13.0%
Not Hispanic or Latino	107,545	92.2%	113,655	90.9%*	87.0%
White alone	101,579	87.1%	106,183	84.9%*	75.7%
Black or African American alone	456	0.4%	616	0.5%*	1.8%
American Indian and Alaska Native alone	1,268	1.1%	884	0.7%*	0.9%
Asian alone	1,078	0.9%	1,310	1.0%	4.3%
Native Hawaiian and Other Pacific Islander alone	150	0.1%	123	0.1%	0.4%
Some Other Race alone	126	0.1%	177	0.1%	0.1%
Two or More Races	2,888	2.5%	4,362	3.5%*	3.7%

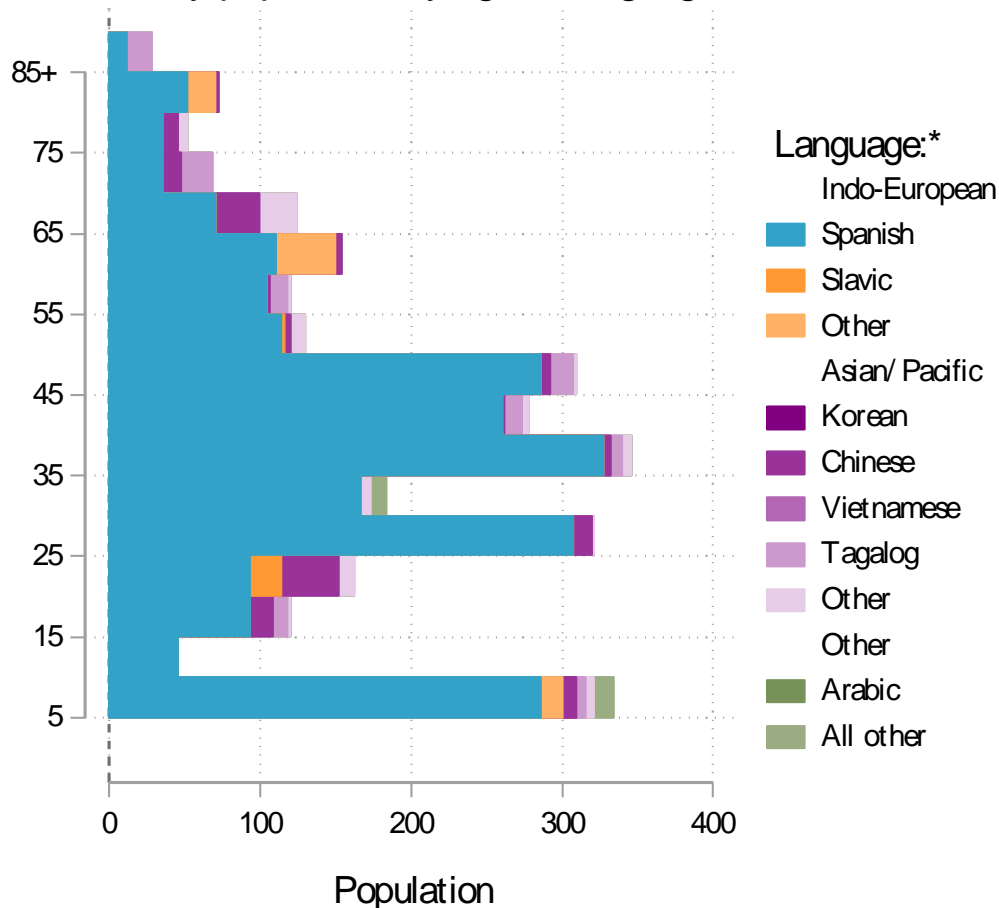
RACE ALONE OR IN COMBINATION WITH ONE OR MORE OTHER RACES**	2010 Census	2010 Census Percent	2015-19 ACS Estimate	2015-19 ACS Percent	Oregon 2015-19 ACS Percent
White	109,288	93.7%	117,428	93.9%	88.8%
Black or African American	1,043	0.9%	1,442	1.2%*	2.9%
American Indian and Alaska Native	3,464	3.0%	4,342	3.5%*	3.1%
Asian	1,890	1.6%	2,395	1.9%*	6.0%
Native Hawaiian and Other Pacific Islander	470	0.4%	589	0.5%	0.8%
Some Other Race	4,612	4.0%	4,781	3.8%	3.6%

Source: U.S. Census Bureau, 2010 Census and 2019 5-year American Community Survey estimates.

* Difference between 2010 Census and 2015-19 ACS is statistically significant at the 90% confidence level.

** Total may add to more than 100% due to persons identifying as more than one race.

Linn County population by age & language: 2019



Language Spoken at Home Speak English less than "very well" Linn County

Languages	Estimate
Total Population Age 5 and Older	117,557
Speaking English less than "very well"	2,876
Spanish	2,403
Russian, Polish, or other Slavic languages	38
Other Indo-European languages	80
Korean	0
Chinese (incl. Cantonese and Mandarin)	153
Vietnamese	0
Tagalog (incl. Filipino)	96
Other Asian and Pacific Island languages	81
Arabic	0
Other languages	25

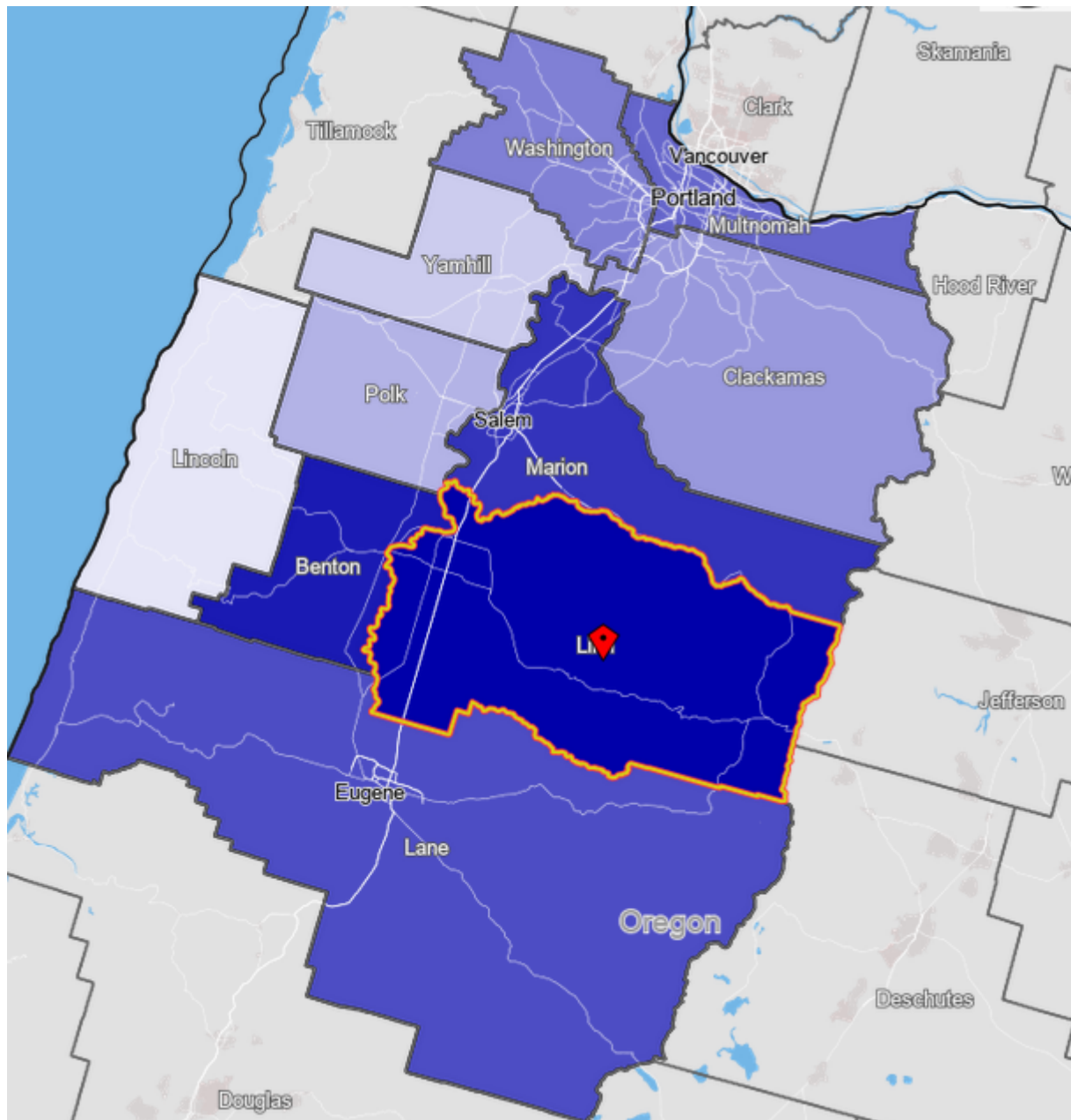
Source: U.S. Census Bureau American Community Survey 2019 5-year estimates, Table C16001.

Note: * Languages for persons who speak English less than very well.

Source: ACS tables B16004, C16001, PUMS, PEP estimates, Analysis by PRC, PSU

[Link to Table C16001](#) for all counties, including margins of error.

[Visualization](#) of language data by census tract within county.

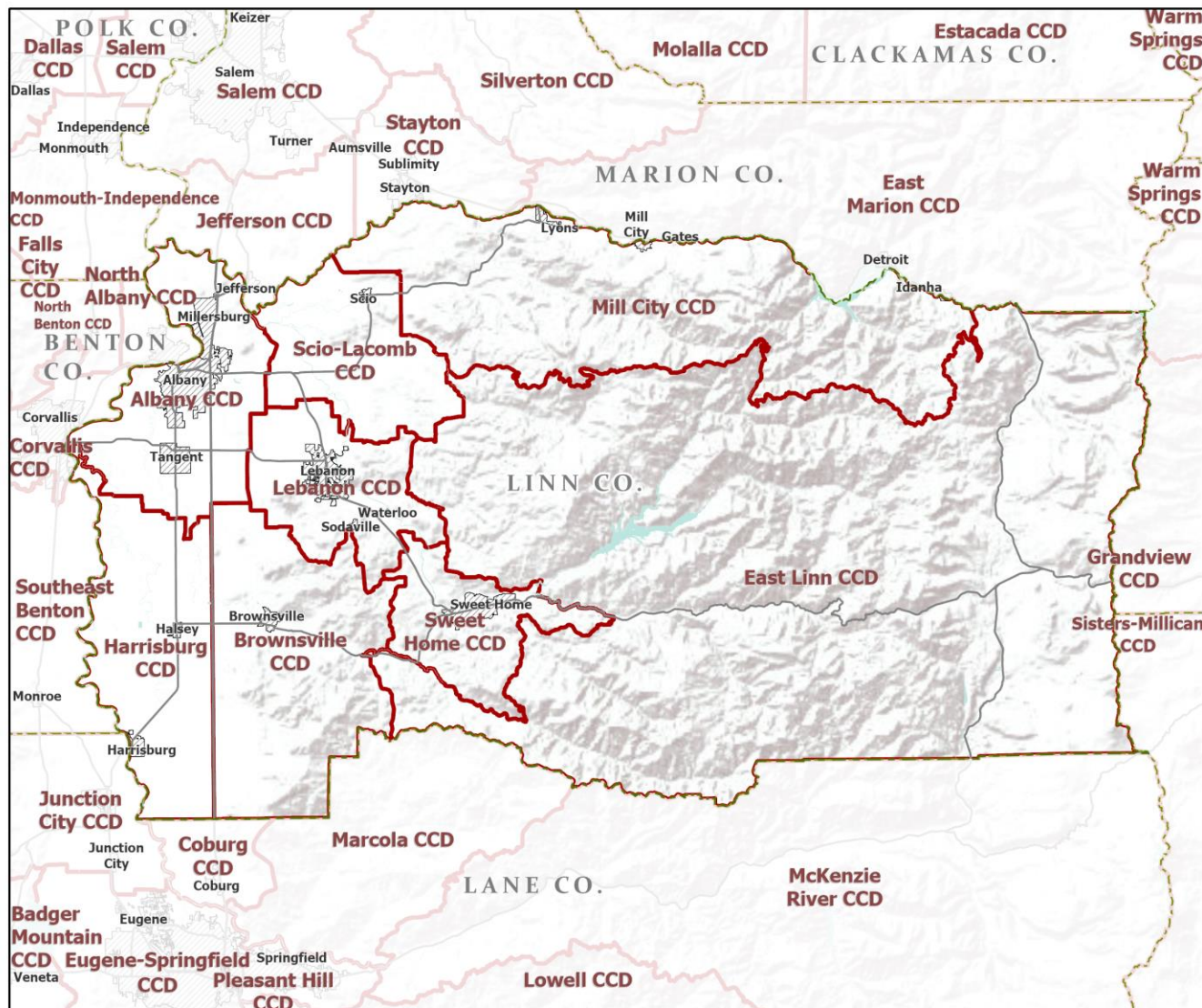






Linn County Commute Flows

Jobs Counts by Counties Where Workers are Employed - All Jobs

	2018	
	Count	Share
All Counties	55,497	100.0%
Linn County, OR	24,686	44.5%
Benton County, OR	7,655	13.8%
Marion County, OR	7,356	13.3%
Lane County, OR	5,235	9.4%
Multnomah County, OR	2,374	4.3%
Washington County, OR	1,944	3.5%
Clackamas County, OR	1,393	2.5%
Polk County, OR	746	1.3%
Yamhill County, OR	593	1.1%
Lincoln County, OR	489	0.9%
All Other Locations	3,026	5.5%

County Subdivisions (CCDs): Linn County



-  Counties
-  Incorporated Cities
-  Highways
-  County Subdivisions (CCDs)



Portland State University,
Population Research Center,
May 2021.
www.pdx.edu/prc

Sources: Esri, USGS, NOAA
State of Oregon GEO;
Oregon Dept. of
Transportation.



Linn County Employment by Sector by Census County Division (1 of 2)

Sector	Oregon	County Total	Albany CCD	Browns- ville CCD	East Linn CCD	Harrisbur g CCD
Total, All Jobs*	1,904,601	46,380	28,163	798	254	3,529
Goods-Producing	18.6%	29.9%	25.8%	56.3%	42.9%	57.6%
Natural Resources and Mining	2.7%	5.5%	1.7%	28.3%	33.9%	25.2%
Construction	5.9%	6.9%	6.4%	17.8%	9.1%	2.4%
Manufacturing	10.0%	17.5%	17.7%	10.2%	0.0%	30.0%
Service Providing	81.4%	70.1%	74.2%	43.7%	57.1%	42.4%
Trade, Transportation, and Utilities	18.6%	20.2%	20.1%	24.9%	25.6%	22.0%
Information	2.0%	0.9%	1.1%	0.4%	0.0%	0.1%
Financial Activities	4.6%	2.8%	3.5%	0.6%	0.0%	1.2%
Professional and Business Services	13.4%	6.7%	9.2%	2.6%	11.0%	1.7%
Education and Health Services	23.1%	22.5%	21.3%	3.4%	18.1%	11.2%
Leisure and Hospitality	11.4%	7.8%	8.2%	5.4%	0.8%	1.8%
Other Services	4.2%	4.3%	4.3%	4.6%	1.6%	3.3%
Public Administration	4.2%	4.9%	6.5%	1.8%	0.0%	1.0%

Continued on next slide

Source: U.S. Census Bureau, LEHD Origin-Destination Employment Statistics, 2018 Q2

* Jobs covered by unemployment insurance and federal workers.

Linn County Employment by Sector by Census County Division (2 of 2)

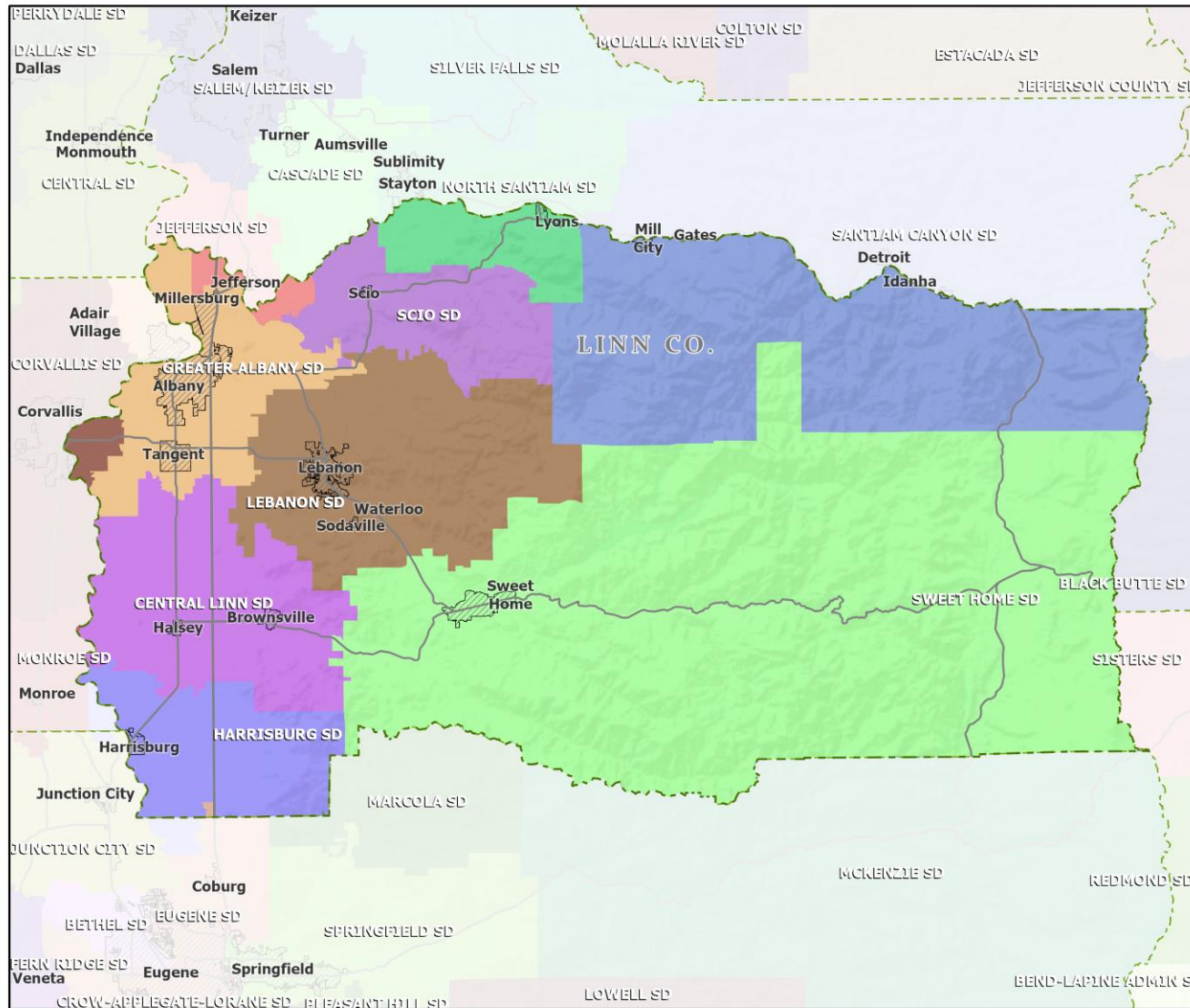
Continued from previous slide

Sector	Oregon	County Total	Lebanon CCD	Mill City CCD	Scio-Lacomb CCD	Sweet Home CCD
Total, All Jobs*	1,904,601	46,380	8,276	1,501	1,236	2,623
Goods-Producing	18.6%	29.9%	19.4%	68.9%	47.4%	29.2%
Natural Resources and Mining	2.7%	5.5%	2.8%	12.5%	19.3%	7.9%
Construction	5.9%	6.9%	5.5%	10.1%	22.4%	10.4%
Manufacturing	10.0%	17.5%	11.1%	46.4%	5.7%	10.9%
Service Providing	81.4%	70.1%	80.6%	31.1%	52.6%	70.8%
Trade, Transportation, and Utilities	18.6%	20.2%	23.7%	8.8%	5.9%	18.8%
Information	2.0%	0.9%	0.4%	0.1%	4.9%	1.4%
Financial Activities	4.6%	2.8%	2.1%	0.7%	1.6%	2.0%
Professional and Business Services	13.4%	6.7%	3.5%	2.8%	1.7%	2.7%
Education and Health Services	23.1%	22.5%	33.7%	8.9%	32.1%	25.0%
Leisure and Hospitality	11.4%	7.8%	10.1%	2.3%	1.9%	10.6%
Other Services	4.2%	4.3%	4.8%	3.1%	3.2%	5.1%
Public Administration	4.2%	4.9%	2.3%	4.5%	1.2%	5.2%

Source: U.S. Census Bureau, LEHD Origin-Destination Employment Statistics, 2018 Q2

* Jobs covered by unemployment insurance and federal workers.

School Districts: Linn County



-  Counties
-  Incorporated Cities
-  Highways

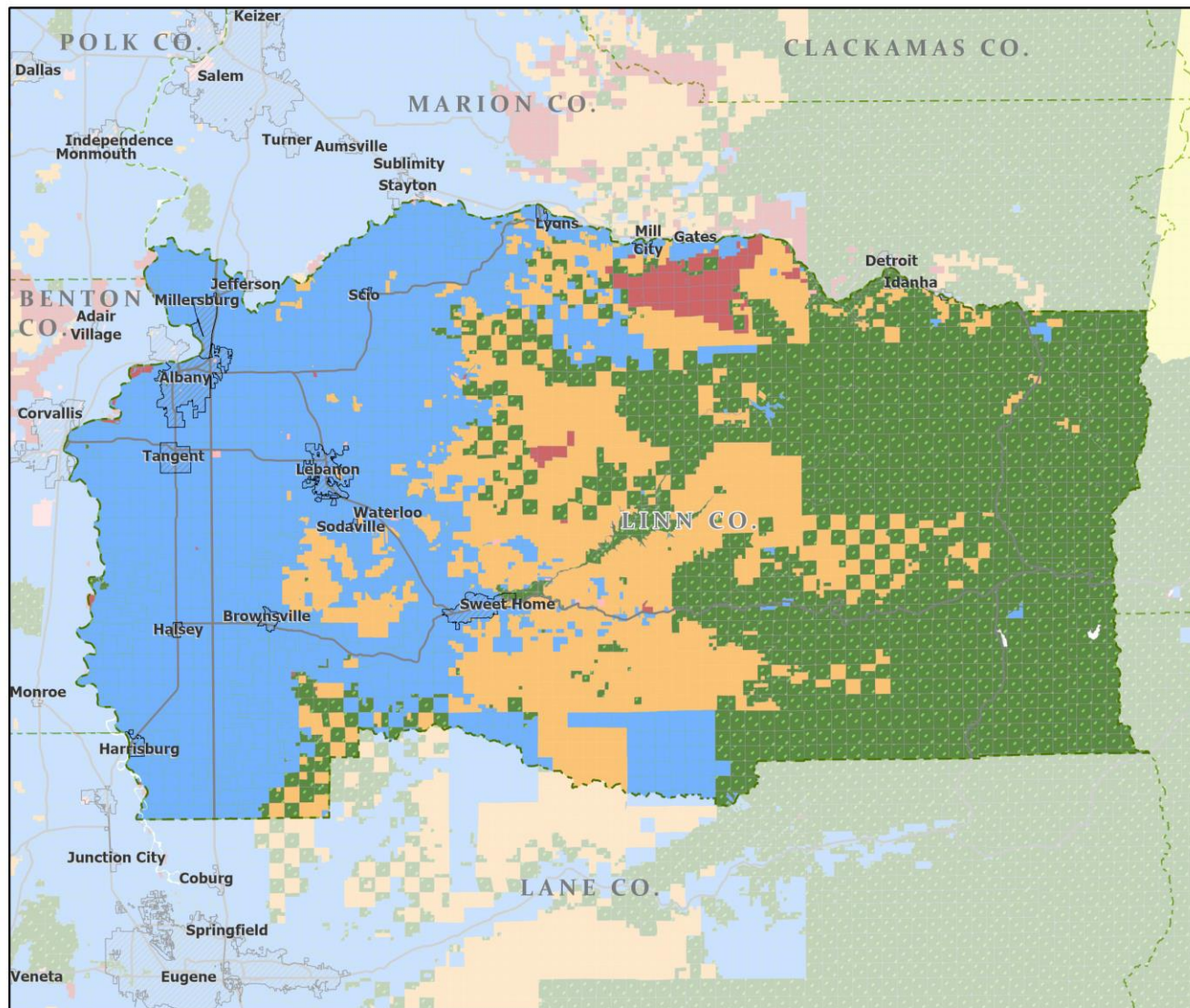



Portland State University,
Population Research Center,
May 2021.
www.pdx.edu/prc

Sources: Esri, USGS, NOAA
State of Oregon GEO;
Oregon Dept. of
Transportation.



Land Ownership: Linn County



 Counties
 Incorporated Cities
 Highways

BLM OWNERSHIP (2015)

- Federal
- State Government
- Local Government
- Tribal
- Private
- Private Industrial



Portland State University,
Population Research Center,
May 2021.
www.pdx.edu/prc

Sources: Esri, USGS, NOAA
State of Oregon GEO;
Oregon Dept. of
Transportation.

A horizontal scale bar with a black background and white markings. It is labeled '0' at the left end and '50' at the right end. Below the bar, the word 'Miles' is written in a serif font. The bar is divided into five equal segments by four vertical white lines.

Ecoregions: Linn County



- Counties
- Incorporated Cities
- Highways

LEVEL III ECOREGIONS OF OREGON (2006)

- Cascades
- Eastern Cascades Slopes and Foothills
- Willamette Valley

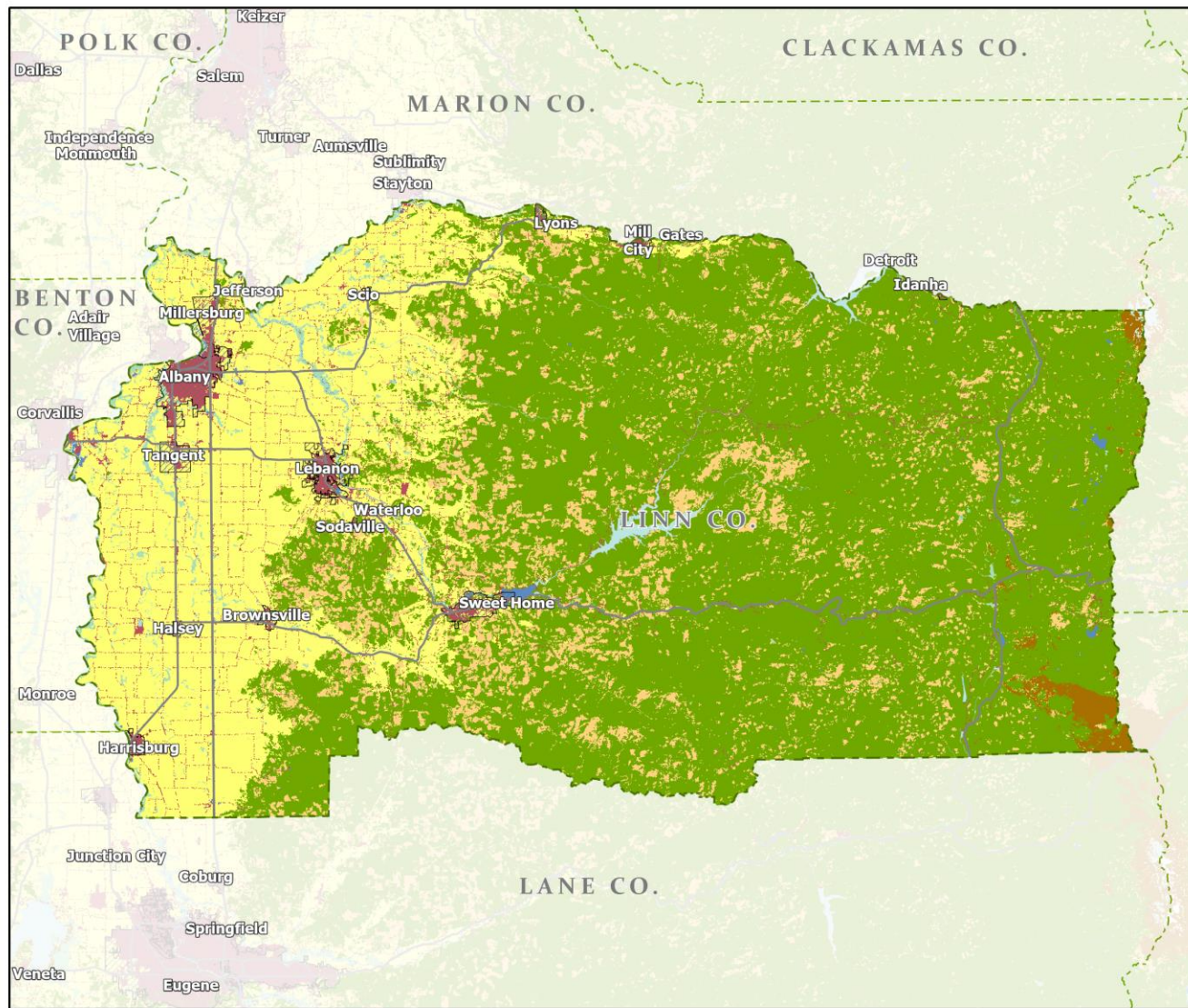


Portland State University,
Population Research Center,
May 2021.
www.pdx.edu/prc

Sources: Esri, USGS, NOAA
State of Oregon GEO;
Oregon Dept. of
Transportation.

0 50 Miles

Land Cover: Linn County



- Counties
- Incorporated Cities
- Highways

NATIONAL LAND COVER

- Developed
- Cultivated Crops/Pasture/Hay
- Barren Land
- Forest
- Grasslands/Scrub/Sedge
- Lichens/Moss
- Wetlands
- Perennial Snow/Ice
- Open Water



Portland State University,
Population Research Center,
May 2021.
www.pdx.edu/prc

Sources: Esri, USGS, NOAA
State of Oregon GEO;
Oregon Dept. of
Transportation.

0 50 Miles