

# Curry County Overview

## House and Senate Committees on Redistricting

June 2, 2021

July 1, 2020 population estimate	23,005
Population rank	27th
Share of state population	0.5%
Density (per square mile)	14.0
Density rank	21st
Area (square miles)	1,648
Area rank	21st
Share of state area	1.7%



Sources: PSU Population Research Center; Oregon Blue Book.

# Highways: Curry County



- Counties
- Incorporated Cities
- Highways

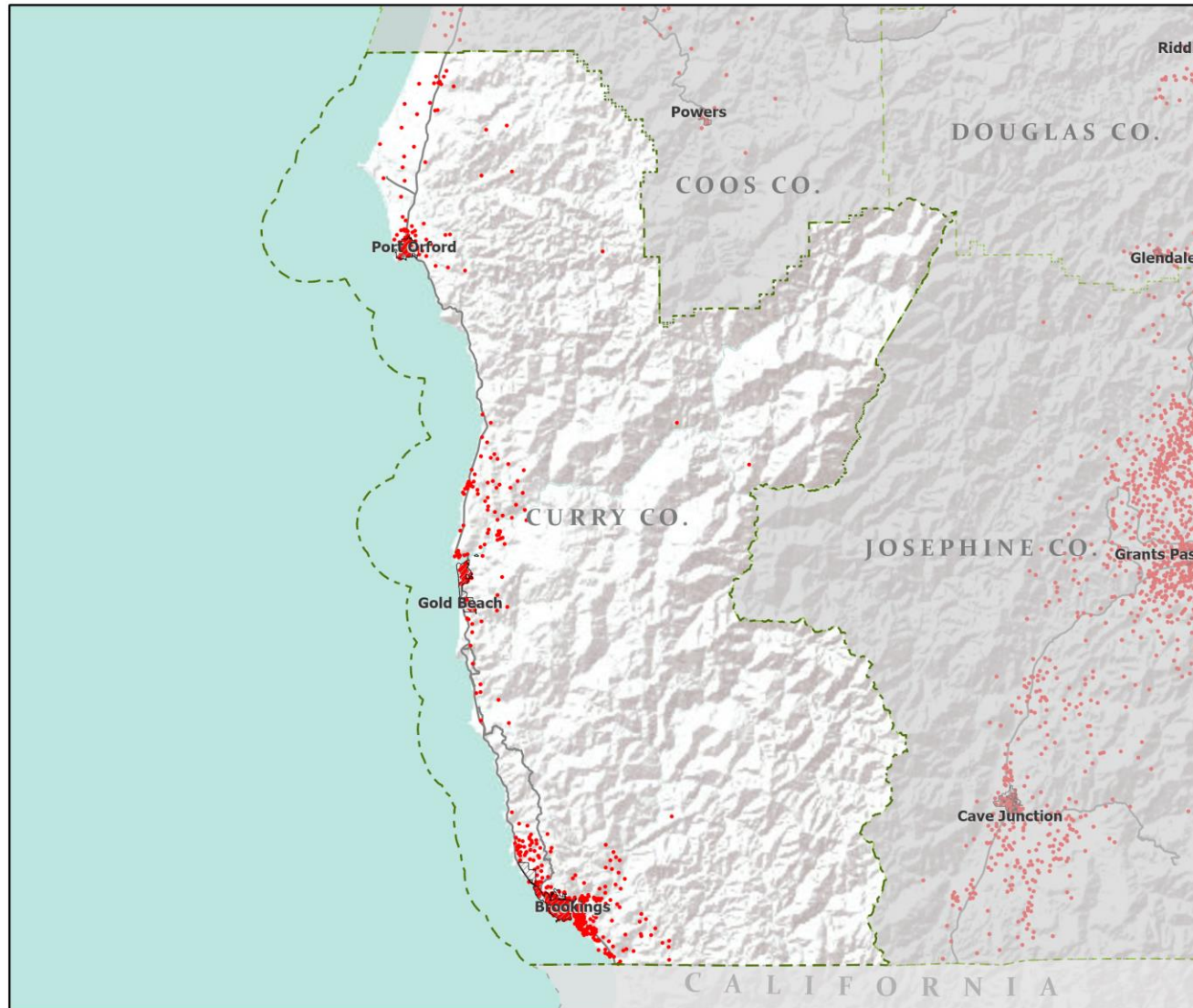


Portland State University,  
Population Research Center,  
May 2021.  
[www.pdx.edu/prc](http://www.pdx.edu/prc)

Sources: Esri, USGS, NOAA  
State of Oregon GEO;  
Oregon Dept. of  
Transportation.



# Population: Curry County



- Counties
- Incorporated Cities
- Highways
- 2010 POPULATION
- 1 Dot = 25 persons

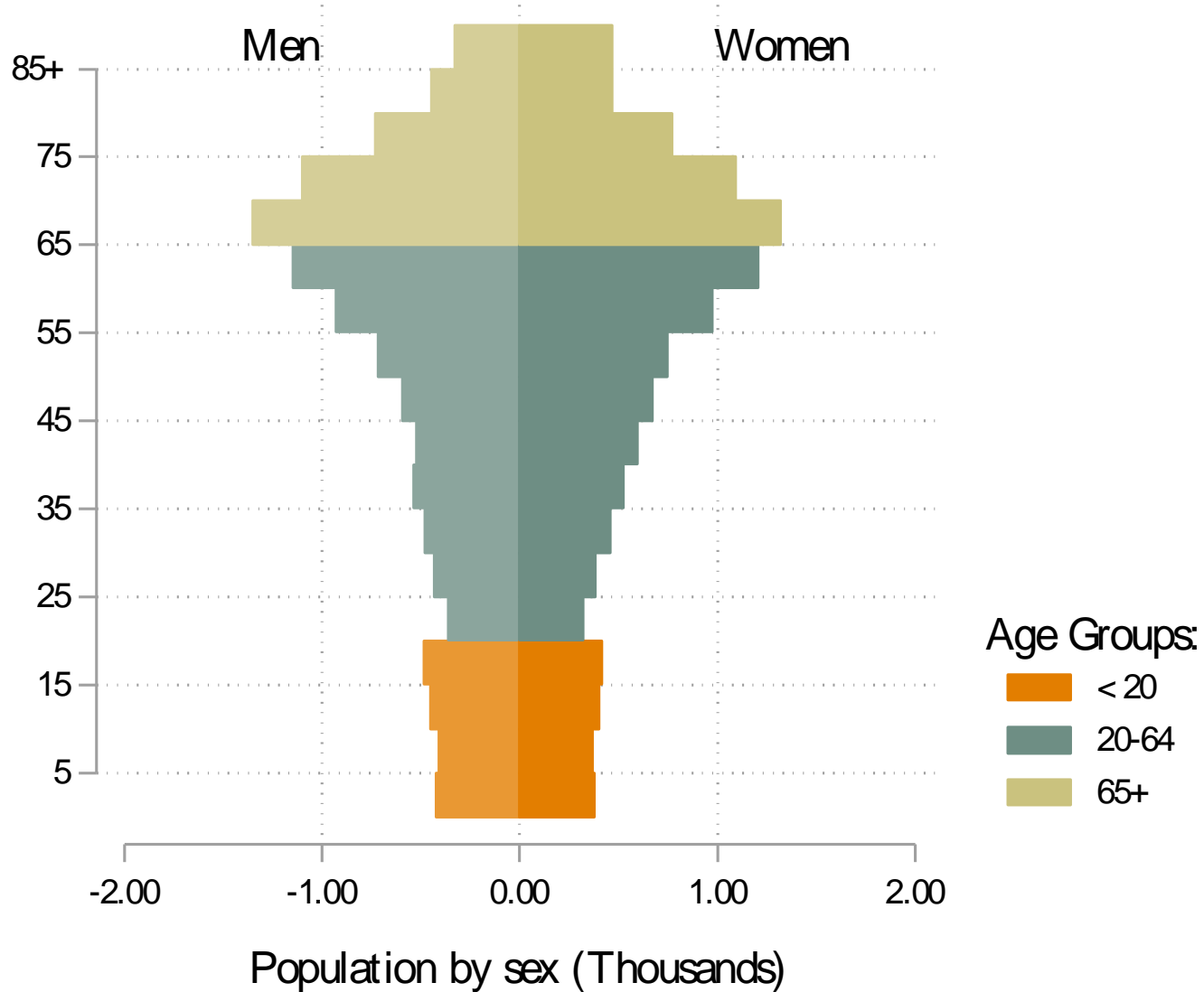


Portland State University,  
Population Research Center,  
May 2021.  
[www.pdx.edu/prc](http://www.pdx.edu/prc)

Sources: Esri, USGS, NOAA  
State of Oregon GEO;  
Oregon Dept. of  
Transportation.

0 60 Miles

# Curry population by age & sex: 2020



Note: Men plotted on negative axis

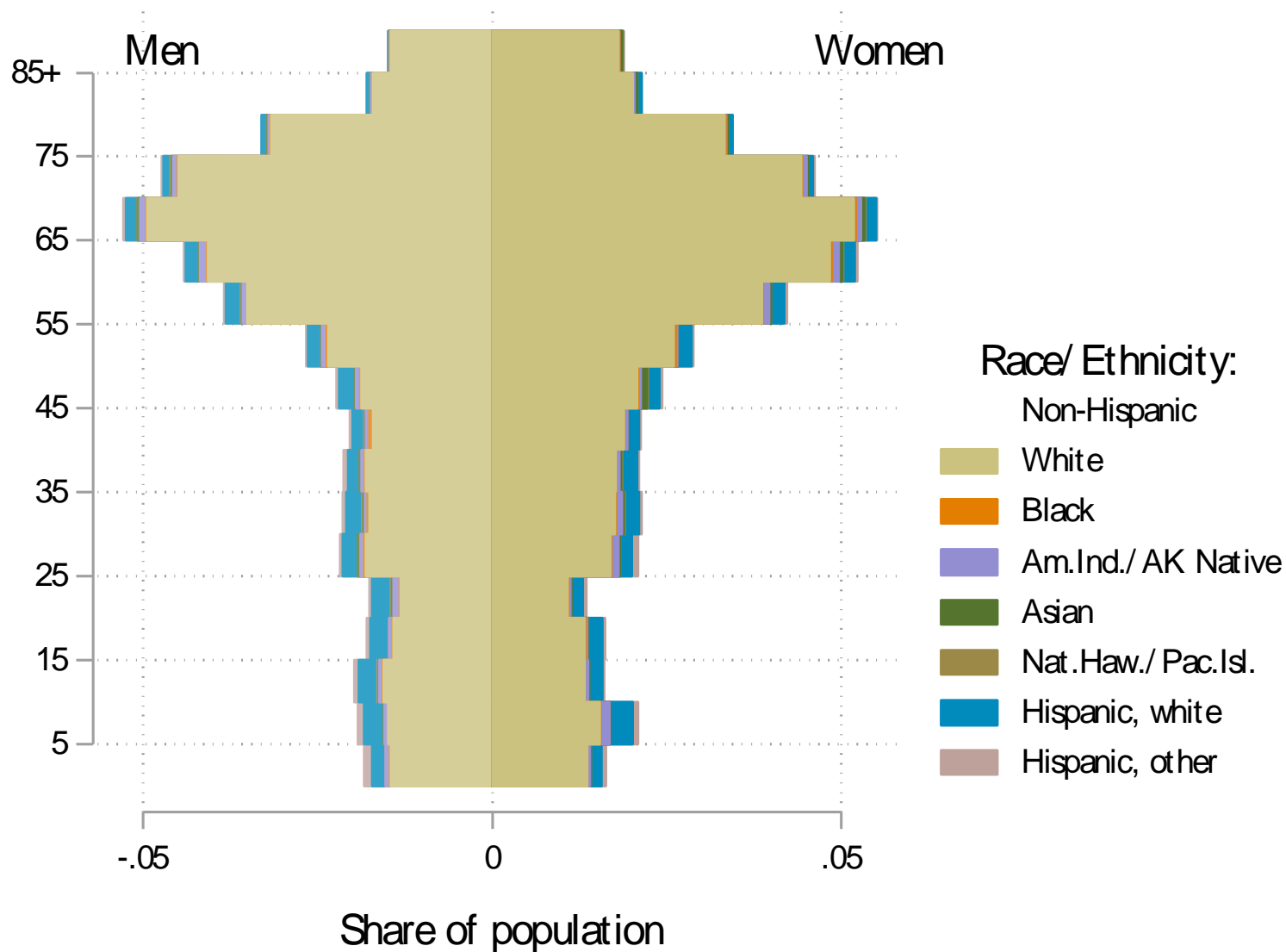
Source: Estimates by Population Research Center, PSU

# Age Distribution, Curry County

Age Group	2020 Estimate	2020 Percent of Total	Oregon 2020 Percent of Total
Total population	23,005	100.0%	100.0%
Under age 5	799	3.5%	5.4%
Age 5 to 17	2,194	9.5%	14.9%
Age 18 to 64	11,940	51.9%	61.1%
Age 65 and over	8,072	35.1%	18.6%

Source: PSU Population Research Center July 1, 2020 Population Estimates

# Curry County population by age & sex: 2019



Note: Men plotted on negative axis

Source: Estimates by US Census Bureau

# Race and Ethnicity, Curry County

HISPANIC OR LATINO AND RACE	2010 Census	2010 Census Percent	2015-19 ACS Estimate	2015-19 ACS Percent	Oregon 2015-19 ACS Percent
Total population	22,364	100.0%	22,650	100.0%	100.0%
Hispanic or Latino	1,201	5.4%	1,612	7.1%*	13.0%
Not Hispanic or Latino	21,163	94.6%	21,038	92.9%*	87.0%
White alone	19,837	88.7%	19,536	86.3%*	75.7%
Black or African American alone	62	0.3%	99	0.4%	1.8%
American Indian and Alaska Native alone	391	1.7%	245	1.1%*	0.9%
Asian alone	157	0.7%	118	0.5%	4.3%
Native Hawaiian and Other Pacific Islander alone	21	0.1%	0	0.0%	0.4%
Some Other Race alone	16	0.1%	0	0.0%	0.1%
Two or More Races	679	3.0%	1,040	4.6%*	3.7%

RACE ALONE OR IN COMBINATION WITH ONE OR MORE OTHER RACES**	2010 Census	2010 Census Percent	2015-19 ACS Estimate	2015-19 ACS Percent	Oregon 2015-19 ACS Percent
White	21,378	95.6%	21,987	97.1%*	88.8%
Black or African American	177	0.8%	245	1.1%	2.9%
American Indian and Alaska Native	998	4.5%	1,406	6.2%*	3.1%
Asian	254	1.1%	276	1.2%	6.0%
Native Hawaiian and Other Pacific Islander	50	0.2%	85	0.4%	0.8%
Some Other Race	390	1.7%	93	0.4%*	3.6%

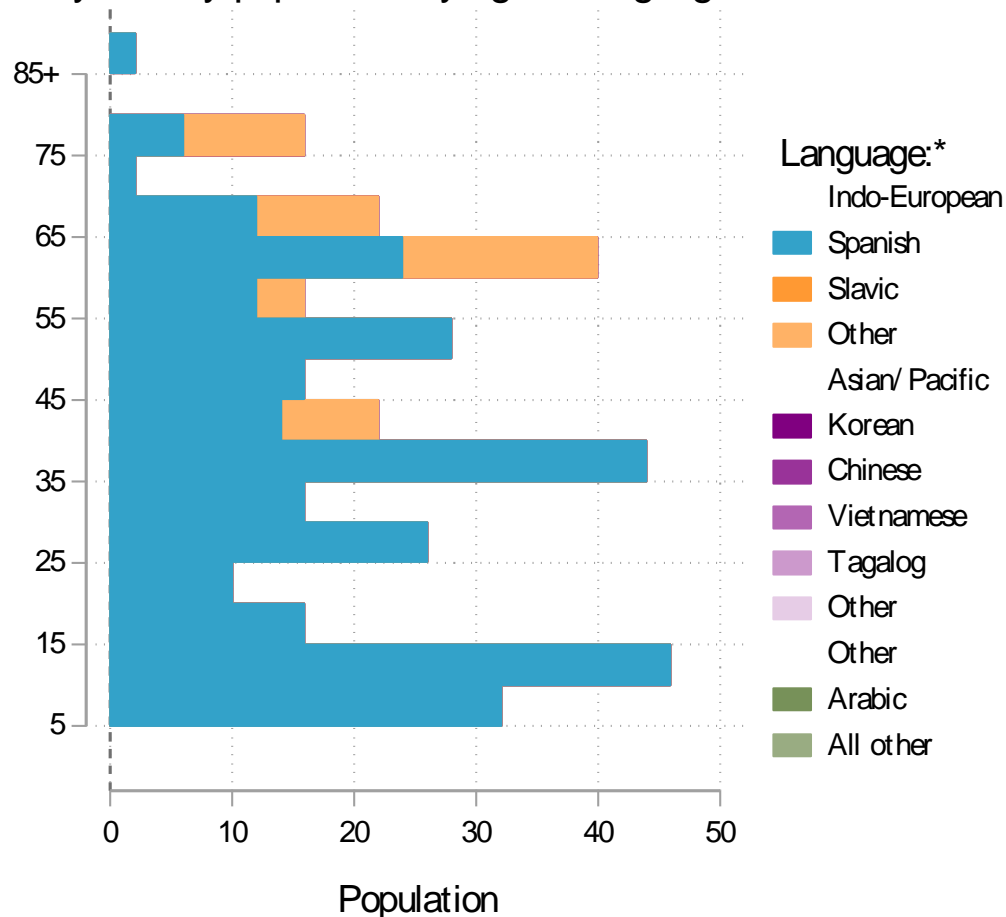
Source: U.S. Census Bureau, 2010 Census and 2019 5-year American Community Survey estimates.

\* Difference between 2010 Census and 2015-19 ACS is statistically significant at the 90% confidence level.

\*\* Total may add to more than 100% due to persons identifying as more than one race.



## Curry County population by age & language: 2019



## Language Spoken at Home Speak English less than "very well" Curry County

Languages	Estimate
Total Population Age 5 and Older	21,717
Speaking English less than "very well"	395
Spanish	308
Russian, Polish, or other Slavic languages	14
Other Indo-European languages	50
Korean	0
Chinese (incl. Cantonese and Mandarin)	0
Vietnamese	0
Tagalog (incl. Filipino)	0
Other Asian and Pacific Island languages	0
Arabic	0
Other languages	23

Source: U.S. Census Bureau American Community Survey 2019 5-year estimates, Table C16001.

Note: \* Languages for persons who speak English less than very well.  
Source: ACS tables B16004, C16001, PUMS; PEP estimates; Analysis by PRC, PSU

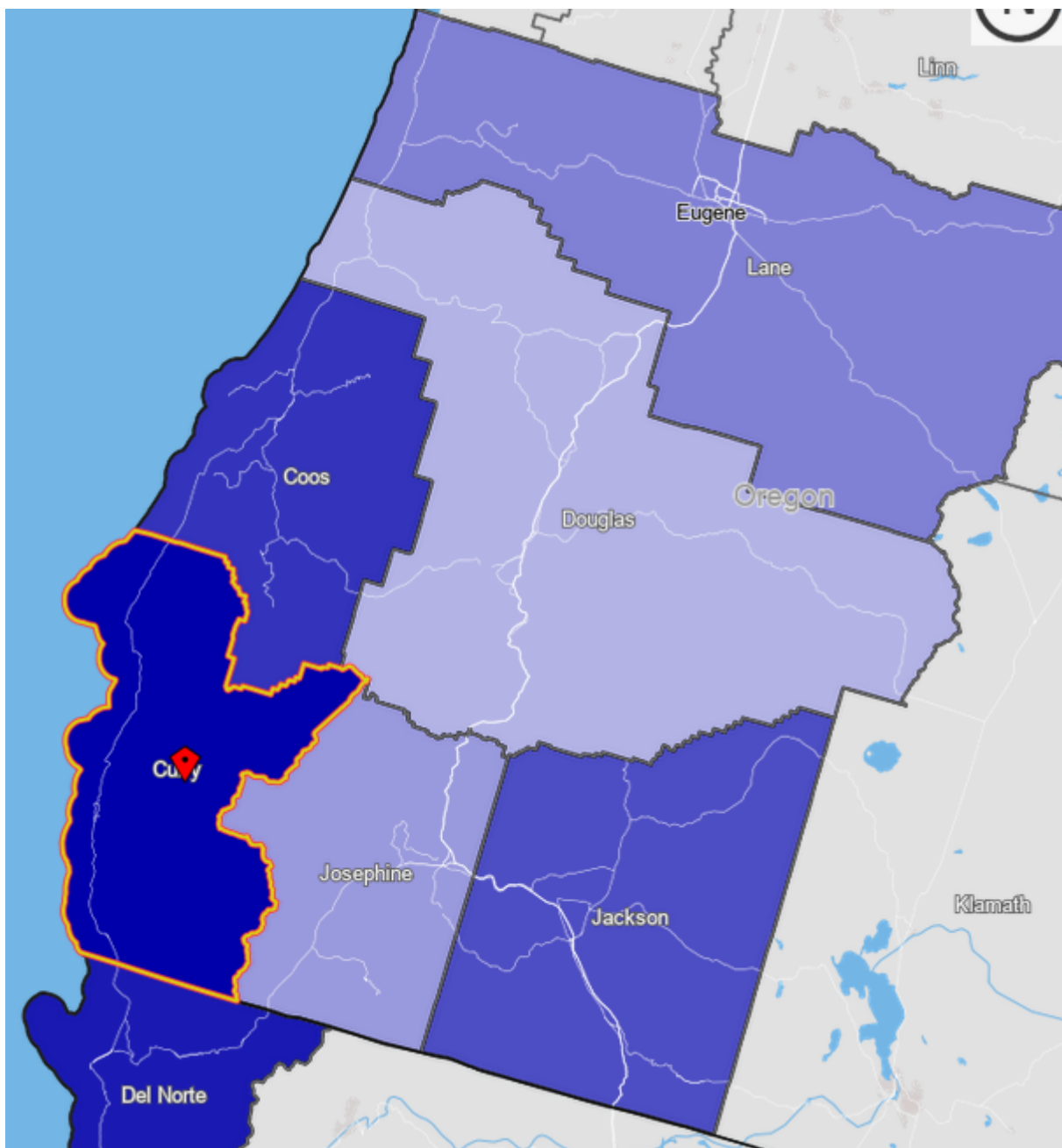
[Link to Table C16001](#) for all counties, including margins of error.

[Visualization](#) of language data by census tract within county.



# Curry County

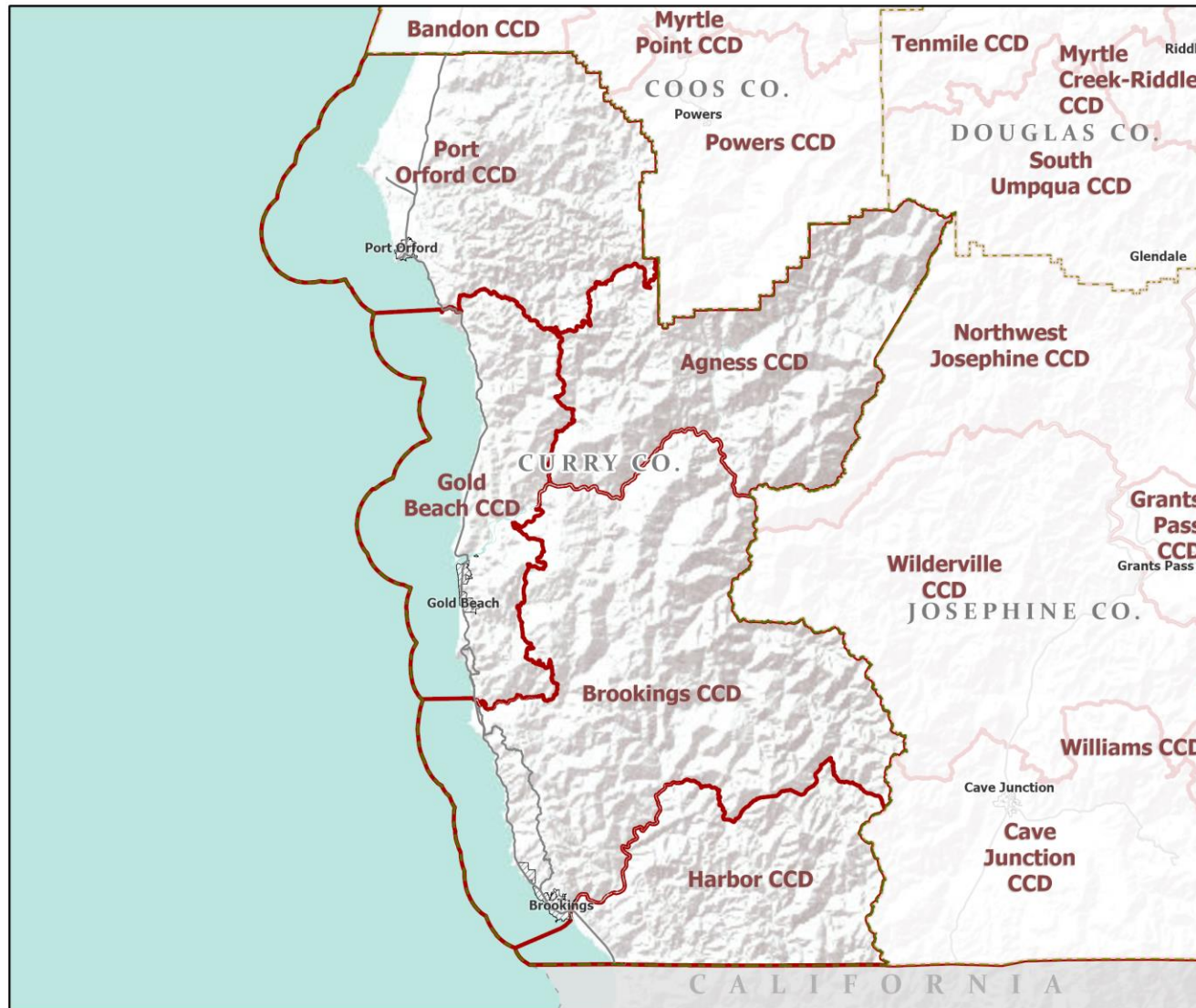
## Commute Flows



### Jobs Counts by Counties Where Workers are Employed - All Jobs

	2018	
	Count	Share
<a href="#">All Counties</a>	7,210	100.0%
<a href="#">Curry County, OR</a>	4,344	60.2%
<a href="#">Del Norte County, CA</a>	638	8.8%
<a href="#">Coos County, OR</a>	404	5.6%
<a href="#">Jackson County, OR</a>	350	4.9%
<a href="#">Multnomah County, OR</a>	206	2.9%
<a href="#">Lane County, OR</a>	189	2.6%
<a href="#">Josephine County, OR</a>	159	2.2%
<a href="#">Douglas County, OR</a>	155	2.1%
<a href="#">Marion County, OR</a>	132	1.8%
<a href="#">Washington County, OR</a>	97	1.3%
All Other Locations	536	7.4%

# County Subdivisions (CCDs): Curry County



- Counties
- Incorporated Cities
- Highways
- County Subdivisions (CCDs)



Portland State University,  
Population Research Center,  
May 2021.  
[www.pdx.edu/prc](http://www.pdx.edu/prc)

Sources: Esri, USGS, NOAA  
State of Oregon GEO;  
Oregon Dept. of  
Transportation.

0 60 Miles

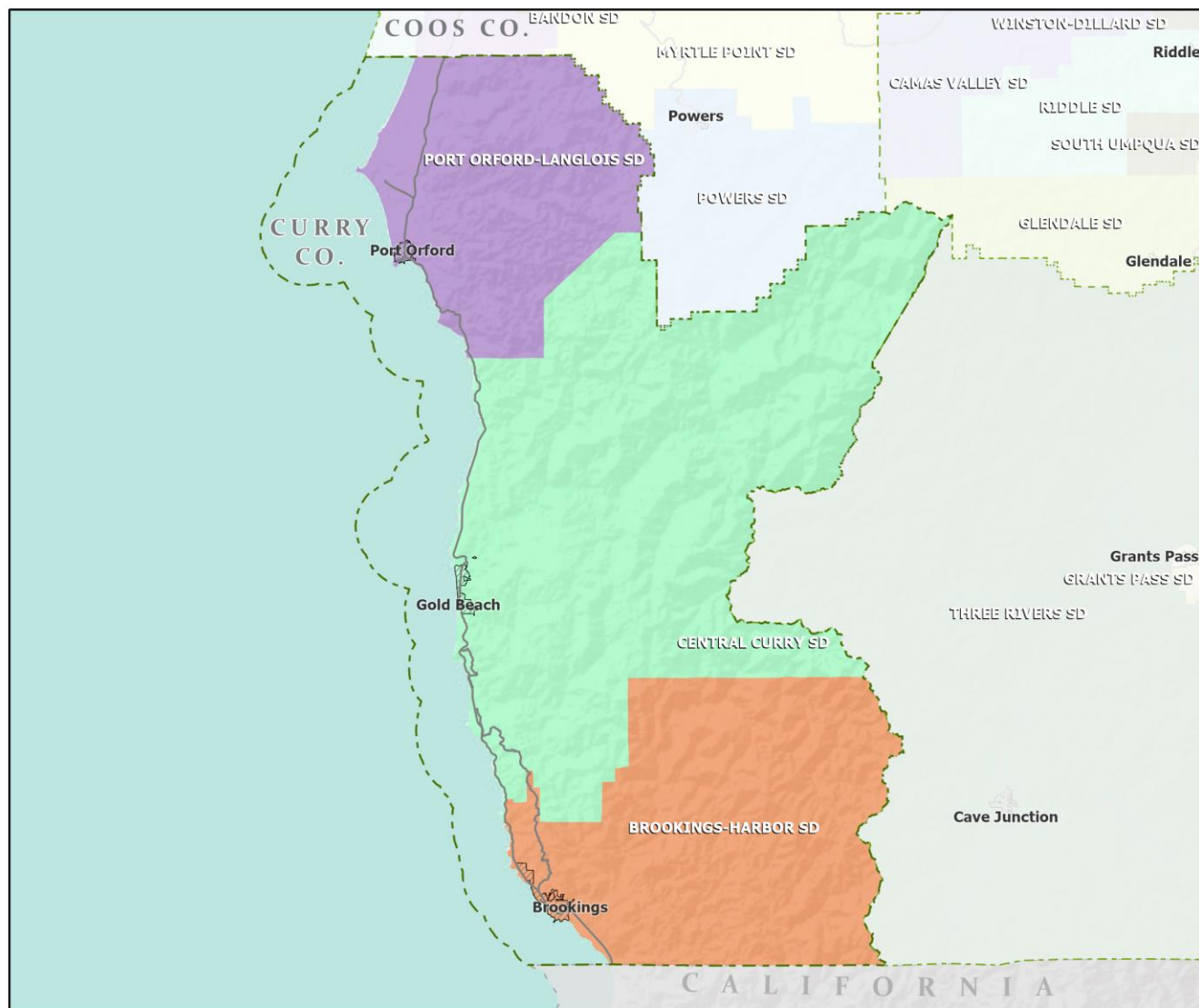
# Curry County Employment by Sector by Census County Division

Sector	Oregon	County Total	Agness CCD	Brookings CCD	Gold Beach CCD	Harbor CCD	Port Orford CCD
Total, All Jobs*	1,904,601	6,284	15	3,064	1,516	1,206	483
Goods-Producing	18.6%	23.6%	66.7%	24.3%	17.7%	29.1%	21.9%
Natural Resources and Mining	2.7%	4.6%	0.0%	1.8%	5.0%	8.3%	12.2%
Construction	5.9%	7.6%	66.7%	5.6%	3.8%	16.7%	7.7%
Manufacturing	10.0%	11.4%	0.0%	17.0%	9.0%	4.1%	2.1%
Service Providing	81.4%	76.4%	33.3%	75.7%	82.3%	70.9%	78.1%
Trade, Transportation, and Utilities	18.6%	17.3%	0.0%	15.1%	18.3%	17.5%	27.3%
Information	2.0%	1.3%	13.3%	1.3%	1.5%	0.0%	3.3%
Financial Activities	4.6%	2.8%	0.0%	2.3%	3.2%	4.5%	0.8%
Professional and Business Services	13.4%	4.6%	0.0%	4.5%	3.6%	6.9%	2.7%
Education and Health Services	23.1%	23.2%	0.0%	29.9%	19.6%	13.3%	17.6%
Leisure and Hospitality	11.4%	18.9%	20.0%	14.9%	21.3%	26.7%	17.0%
Other Services	4.2%	4.5%	0.0%	5.9%	4.3%	1.2%	4.3%
Public Administration	4.2%	3.9%	0.0%	1.7%	10.4%	0.8%	5.0%

Source: U.S. Census Bureau, LEHD Origin-Destination Employment Statistics, 2018 Q2

\* Jobs covered by unemployment insurance and federal workers.

# School Districts: Curry County



- Counties
- Incorporated Cities
- Highways

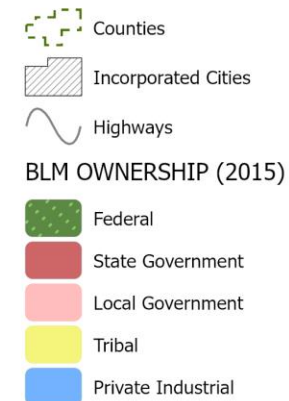
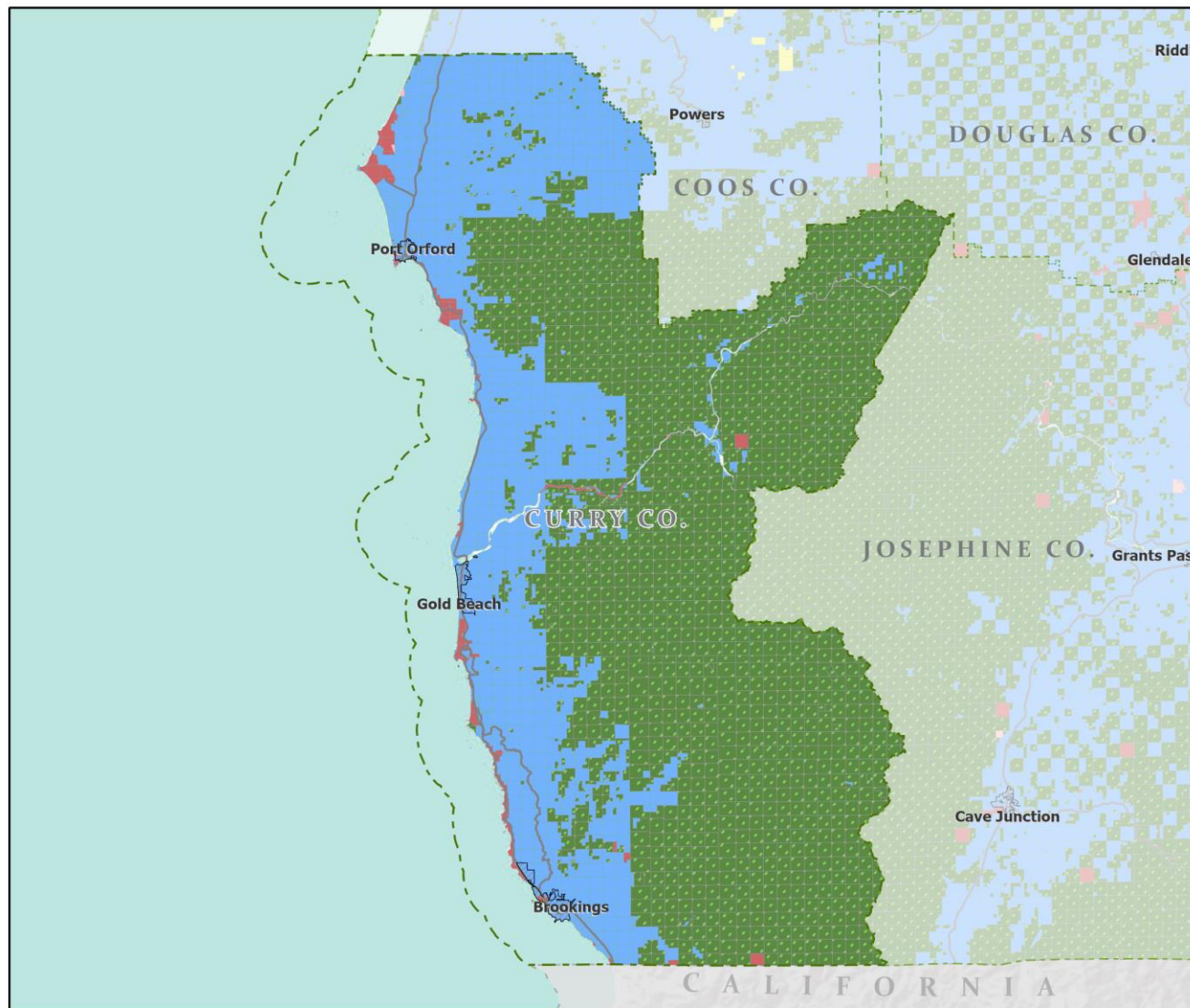


Portland State University,  
Population Research Center,  
May 2021.  
[www.pdx.edu/prc](http://www.pdx.edu/prc)

Sources: Esri, USGS, NOAA  
State of Oregon GEO;  
Oregon Dept. of  
Transportation.



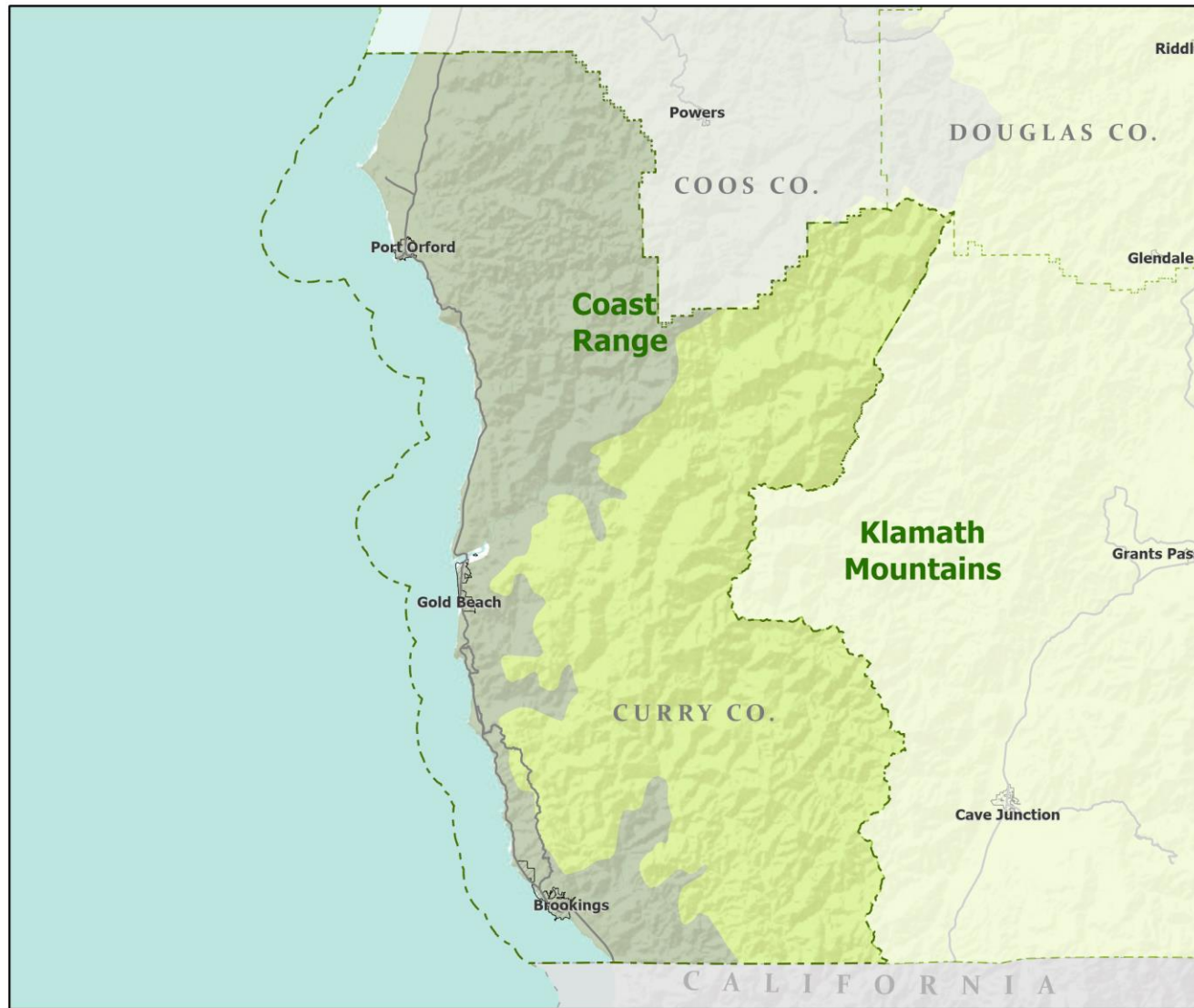
# Land Ownership: Curry County



Portland State University,  
Population Research Center,  
May 2021.  
[www.pdx.edu/prc](http://www.pdx.edu/prc)

Sources: Esri, USGS, NOAA  
State of Oregon GEO;  
Oregon Dept. of  
Transportation.

# Ecoregions: Curry County



- Counties
- Incorporated Cities
- Highways

LEVEL III ECOREGIONS OF OREGON (2006)

- Coast Range
- Klamath Mountains



Portland State University,  
Population Research Center,  
May 2021.  
[www.pdx.edu/prc](http://www.pdx.edu/prc)

Sources: Esri, USGS, NOAA  
State of Oregon GEO;  
Oregon Dept. of  
Transportation.



# Land Cover: Curry County



Portland State University,  
Population Research Center,  
May 2021.  
[www.pdx.edu/prc](http://www.pdx.edu/prc)

Sources: Esri, USGS, NOAA  
State of Oregon GEO;  
Oregon Dept. of  
Transportation.