

Benton County Overview

House and Senate Committees on Redistricting

June 2, 2021

July 1, 2020 population estimate	94,665
Population rank	11th
Share of state population	2.2%
Density (per square mile)	139.4
Density rank	6th
Area (square miles)	679
Area rank	34th
Share of state area	0.7%



Sources: PSU Population Research Center; Oregon Blue Book.

Highways: Benton County



- Counties
- Incorporated Cities
- Highways

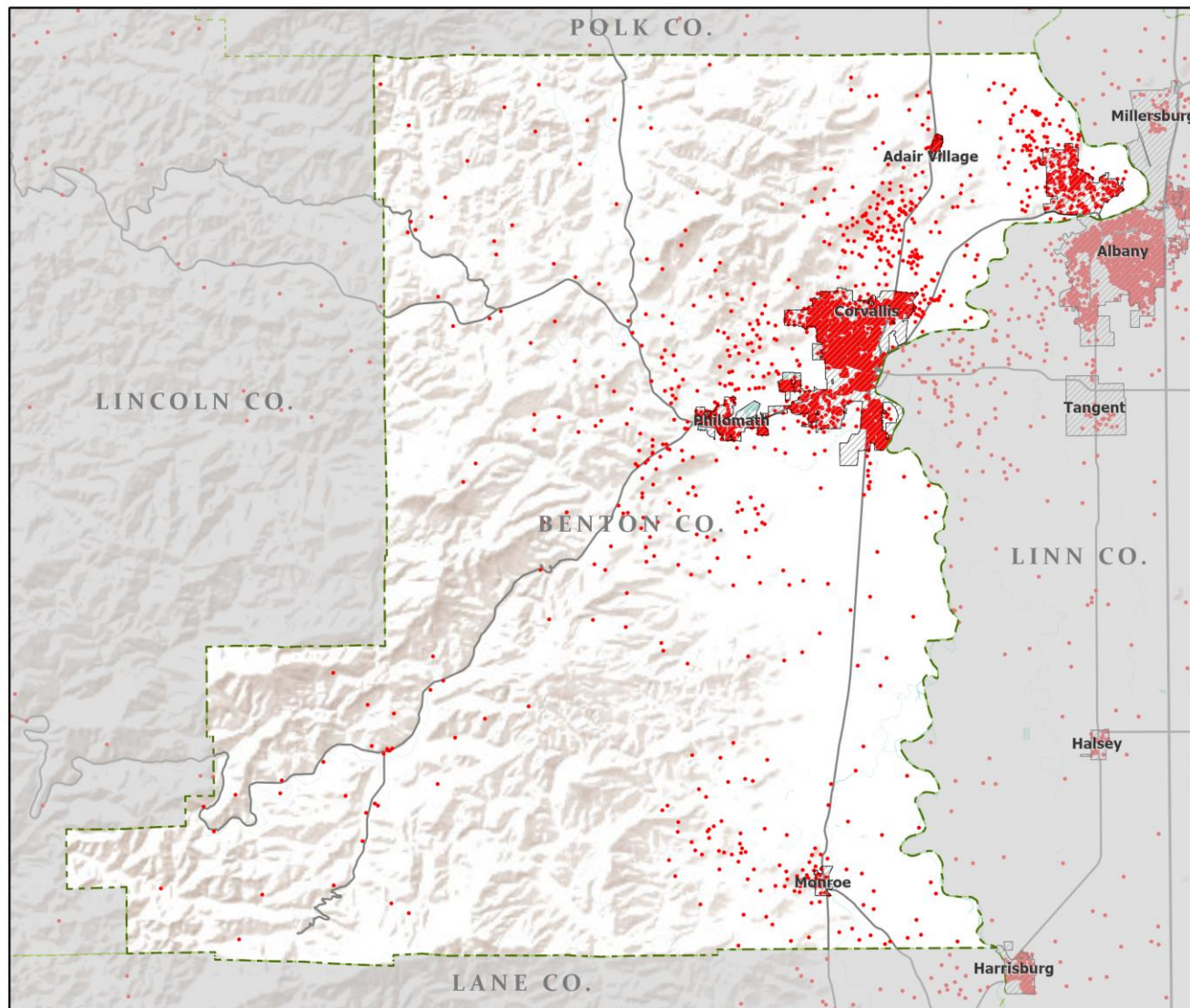


Portland State University,
Population Research Center,
May 2021.
www.pdx.edu/prc

Sources: Esri, USGS, NOAA
State of Oregon GEO;
Oregon Dept. of
Transportation.

0 20 Miles

Population: Benton County



- Counties
- Incorporated Cities
- Highways
- 2010 POPULATION
- 1 Dot = 25 persons

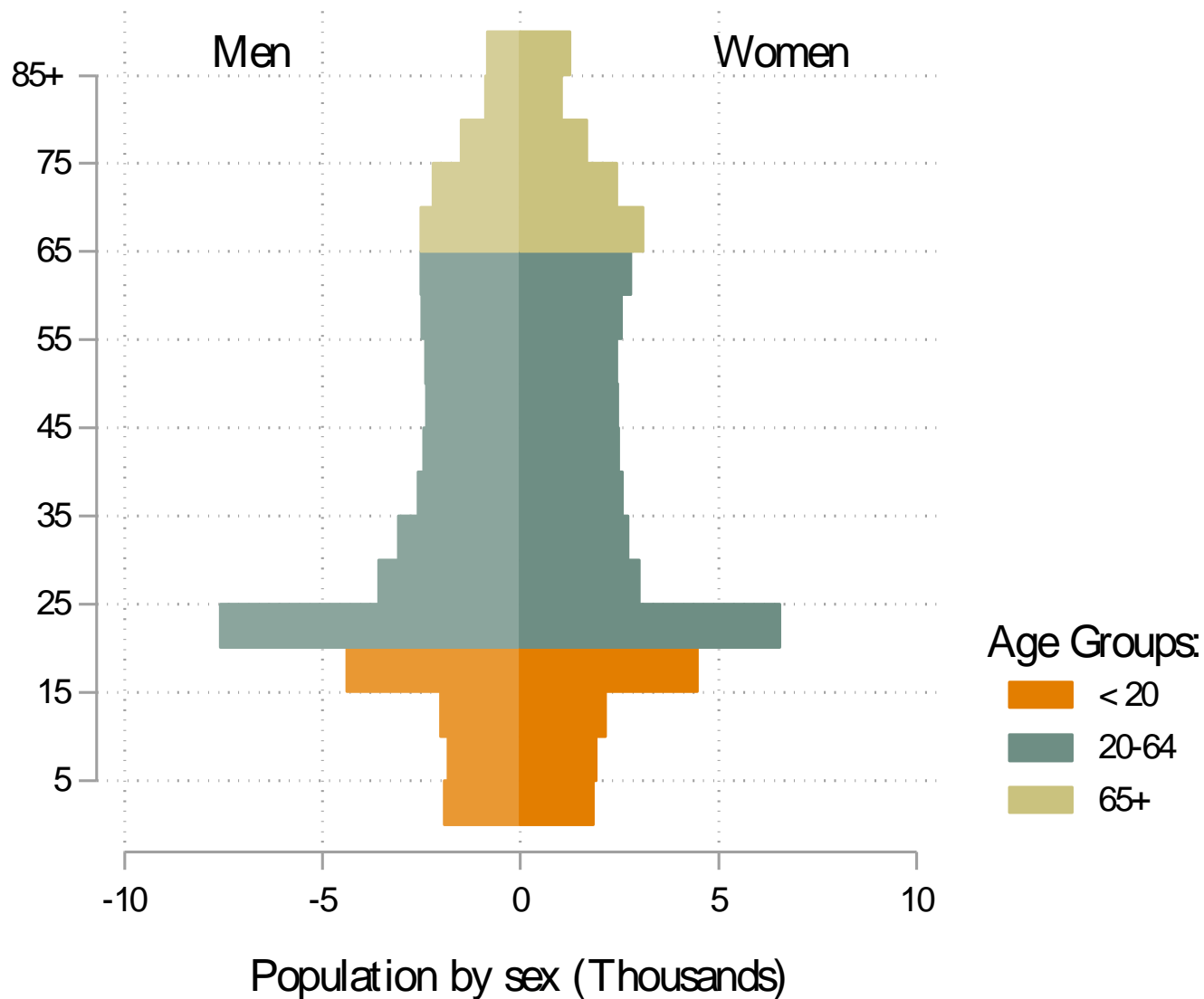


Portland State University,
Population Research Center,
May 2021.
www.pdx.edu/prc

Sources: Esri, USGS, NOAA
State of Oregon GEO;
Oregon Dept. of
Transportation.

0 20 Miles

Benton population by age & sex: 2020



Note: Men plotted on negative axis

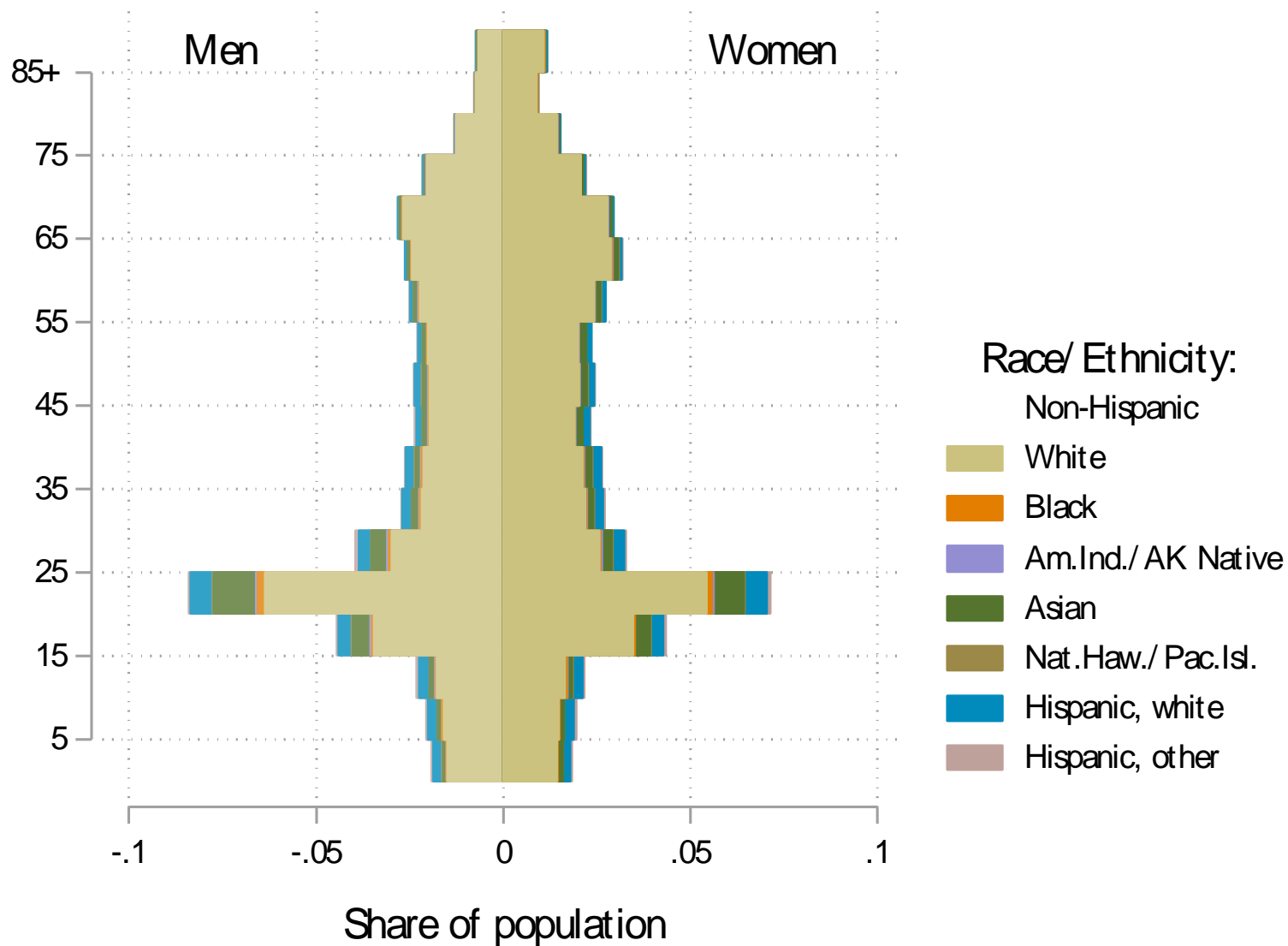
Source: Estimates by Population Research Center, PSU

Age Distribution, Benton County

Age Group	2020 Estimate	2020 Percent of Total	Oregon 2020 Percent of Total
Total population	94,665	100.0%	100.0%
Under age 5	3,762	4.0%	5.4%
Age 5 to 17	10,794	11.4%	14.9%
Age 18 to 64	62,631	66.2%	61.1%
Age 65 and over	17,478	18.5%	18.6%

Source: PSU Population Research Center July 1, 2020 Population Estimates

Benton County population by age & sex: 2019



Note: Men plotted on negative axis

Source: Estimates by US Census Bureau

Race and Ethnicity, Benton County

	2010 Census	2010 Census Percent	2015-19 ACS Estimate	2015-19 ACS Percent	Oregon 2015-19 ACS Percent
HISPANIC OR LATINO AND RACE					
Total population	85,579	100.0%	91,107	100.0%	100.0%
Hispanic or Latino	5,467	6.4%	6,740	7.4%*	13.0%
Not Hispanic or Latino	80,112	93.6%	84,367	92.6%*	87.0%
White alone	71,552	83.6%	73,083	80.2%*	75.7%
Black or African American alone	715	0.8%	937	1.0%	1.8%
American Indian and Alaska Native alone	493	0.6%	480	0.5%	0.9%
Asian alone	4,404	5.1%	6,436	7.1%*	4.3%
Native Hawaiian and Other Pacific Islander alone	199	0.2%	212	0.2%	0.4%
Some Other Race alone	156	0.2%	143	0.2%	0.1%
Two or More Races	2,593	3.0%	3,076	3.4%	3.7%

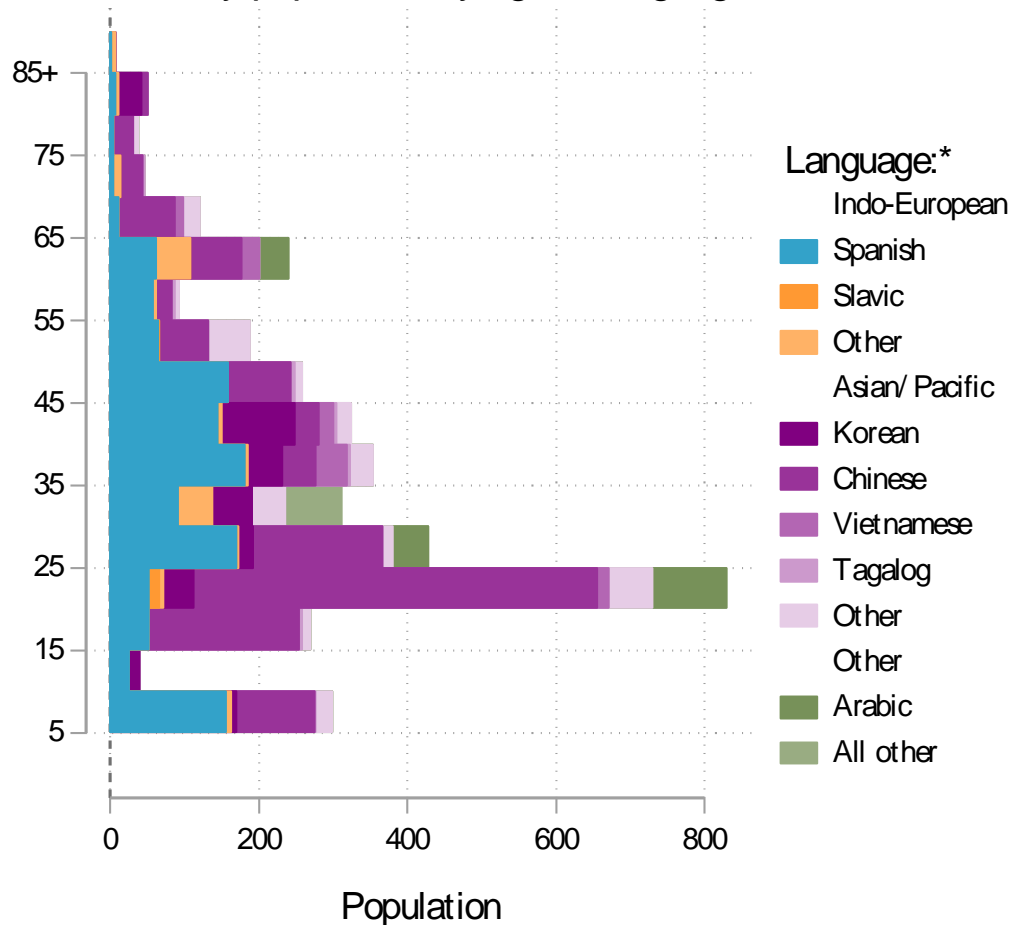
	2010 Census	2010 Census Percent	2015-19 ACS Estimate	2015-19 ACS Percent	Oregon 2015-19 ACS Percent
RACE ALONE OR IN COMBINATION WITH ONE OR MORE OTHER RACES**					
White	77,368	90.4%	81,061	89.0%*	88.8%
Black or African American	1,267	1.5%	1,641	1.8%*	2.9%
American Indian and Alaska Native	1,625	1.9%	2,145	2.4%*	3.1%
Asian	5,776	6.7%	8,128	8.9%*	6.0%
Native Hawaiian and Other Pacific Islander	548	0.6%	502	0.6%	0.8%
Some Other Race	2,338	2.7%	1,924	2.1%*	3.6%

Source: U.S. Census Bureau, 2010 Census and 2019 5-year American Community Survey estimates.

* Difference between 2010 Census and 2015-19 ACS is statistically significant at the 90% confidence level.

** Total may add to more than 100% due to persons identifying as more than one race.

Benton County population by age & language: 2019



Language Spoken at Home Speak English less than "very well"

Languages	Estimate
Total Population Age 5 and Older	87,434
Speaking English less than "very well"	3,981
Spanish	1,249
Russian, Polish, or other Slavic languages	21
Other Indo-European languages	216
Korean	313
Chinese (incl. Cantonese and Manadrin)	1,477
Vietnamese	117
Tagalog (incl. Filipino)	25
Other Asian and Pacific Island languages	304
Arabic	185
Other languages	74

Source: U.S. Census Bureau American Community Survey 2019 5-year estimates, Table C16001.

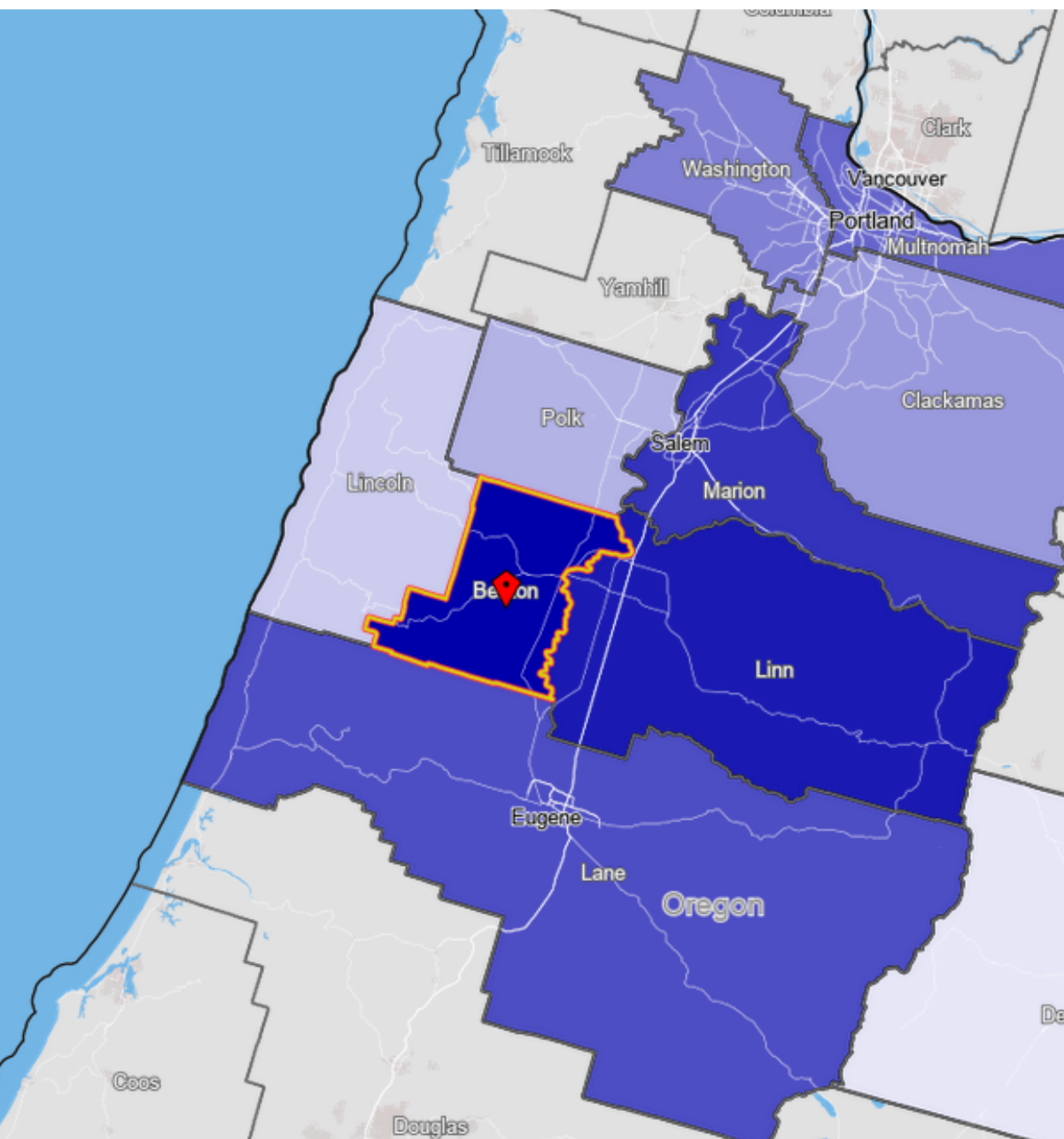
Note: * Languages for persons who speak English less than very well.
Source: ACS tables B16004, C16001, PUMS; PEP estimates; Analysis by PRC, PSU

[Link to Table C16001](#) for all counties, including margins of error.

[Visualization](#) of language data by census tract within county.

Benton County

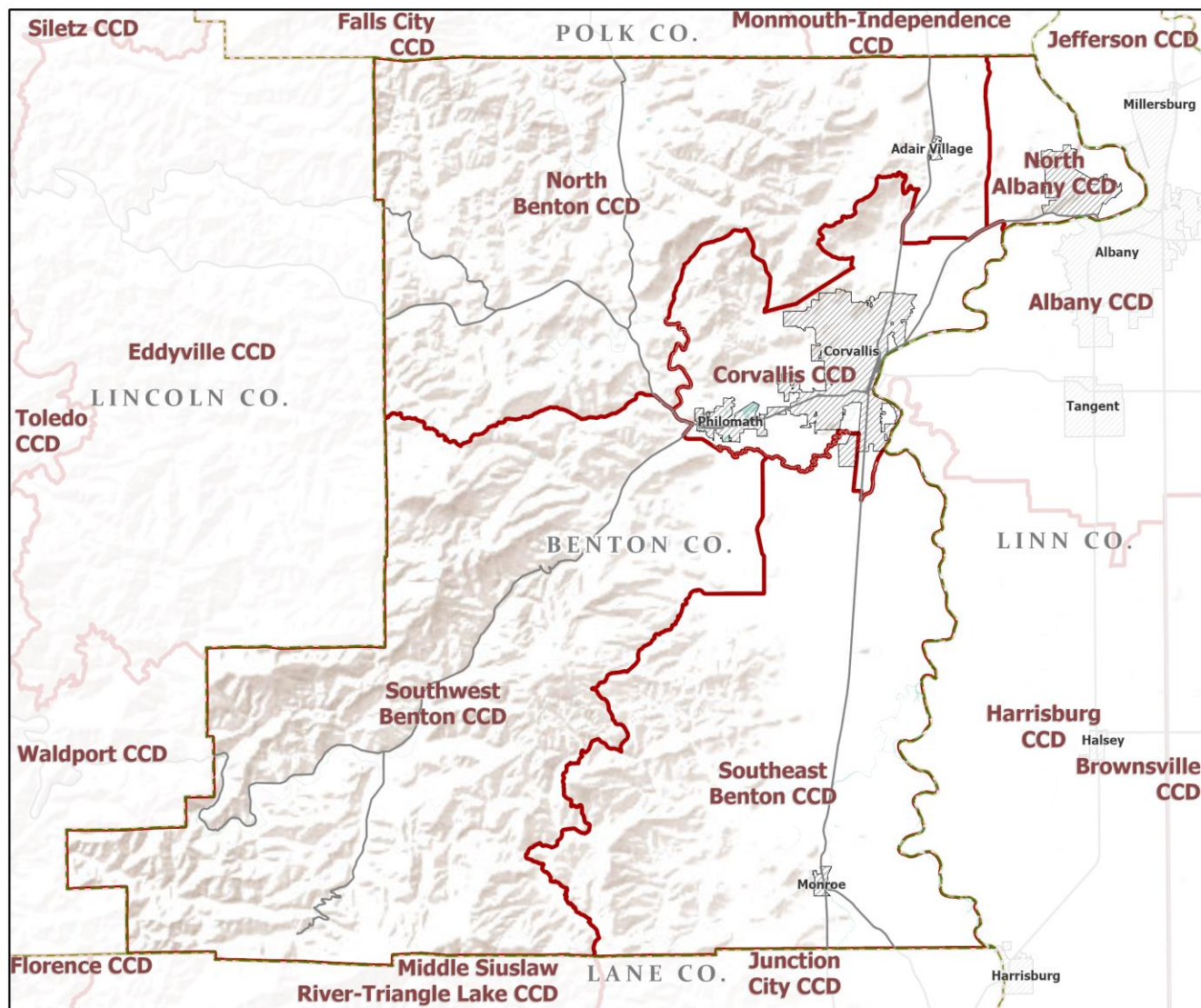
County Commute Flows



Jobs Counts by Counties Where Workers are Employed - All Jobs

	2018	
	Count	Share
All Counties	37,806	100.0%
Benton County, OR	19,790	52.3%
Linn County, OR	5,210	13.8%
Marion County, OR	2,610	6.9%
Lane County, OR	2,609	6.9%
Multnomah County, OR	1,719	4.5%
Washington County, OR	1,311	3.5%
Clackamas County, OR	901	2.4%
Polk County, OR	601	1.6%
Lincoln County, OR	496	1.3%
Deschutes County, OR	352	0.9%
All Other Locations	2,207	5.8%

County Subdivisions (CCDs): Benton County



- Counties
- Incorporated Cities
- Highways
- County Subdivisions (CCDs)



Portland State University,
Population Research Center,
May 2021.
www.pdx.edu/prc

Sources: Esri, USGS, NOAA
State of Oregon GEO;
Oregon Dept. of
Transportation.



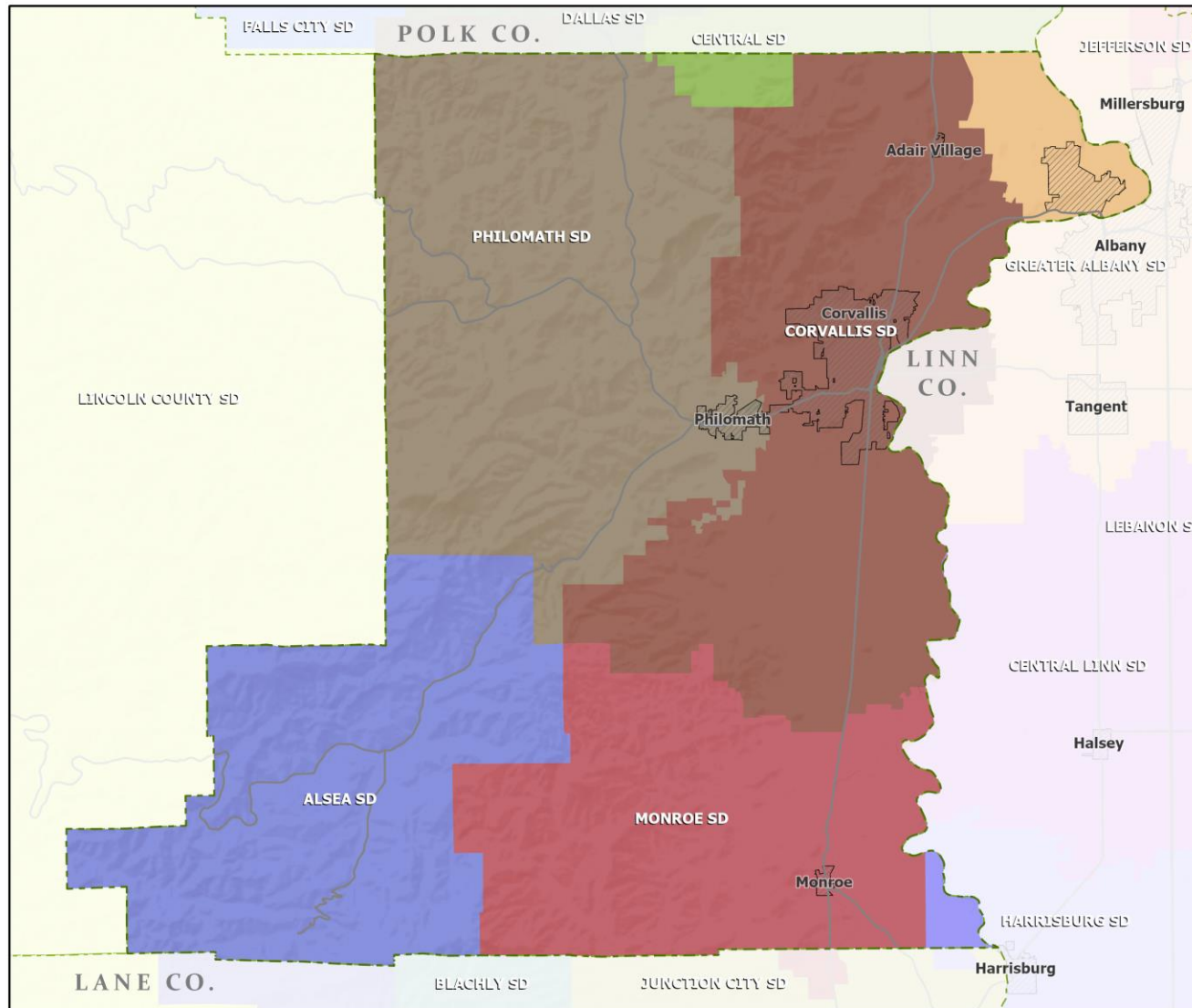
Benton County Employment by Sector by Census County Division

Sector	Oregon	County Total	Corvallis CCD	North Albany CCD	North Benton CCD	SE Benton CCD	SW Benton CCD
Total, All Jobs*	1,904,601	39,287	35,309	1,544	718	958	758
Goods-Producing	18.6%	13.6%	11.0%	15.7%	34.1%	55.9%	59.1%
Natural Resources and Mining	2.7%	2.9%	1.1%	5.2%	19.4%	19.7%	44.7%
Construction	5.9%	3.6%	2.9%	8.7%	5.7%	10.5%	12.7%
Manufacturing	10.0%	7.1%	6.9%	1.7%	9.1%	25.7%	1.7%
Service Providing	81.4%	86.4%	89.0%	84.3%	65.9%	44.1%	40.9%
Trade, Transportation, and Utilities	18.6%	11.0%	10.9%	17.0%	7.4%	12.5%	5.4%
Information	2.0%	1.7%	1.7%	1.2%	0.4%	2.6%	0.7%
Financial Activities	4.6%	2.8%	2.9%	3.0%	1.5%	0.7%	0.5%
Professional and Business Services	13.4%	12.0%	11.9%	14.0%	16.4%	6.5%	13.6%
Education and Health Services	23.1%	40.5%	42.6%	27.7%	24.8%	16.1%	13.6%
Leisure and Hospitality	11.4%	11.2%	11.6%	16.2%	6.3%	1.7%	1.2%
Other Services	4.2%	4.3%	4.3%	4.4%	4.2%	3.1%	4.1%
Public Administration	4.2%	3.0%	3.2%	0.8%	4.9%	0.8%	1.8%

Source: U.S. Census Bureau, LEHD Origin-Destination Employment Statistics, 2018 Q2

* Jobs covered by unemployment insurance and federal workers.

School Districts: Benton County



- Counties
- Incorporated Cities
- Highways

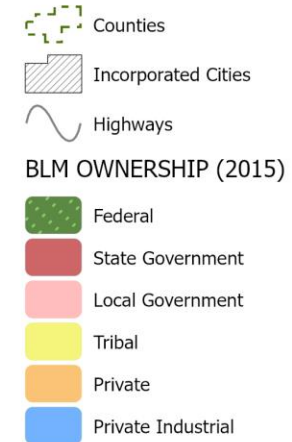
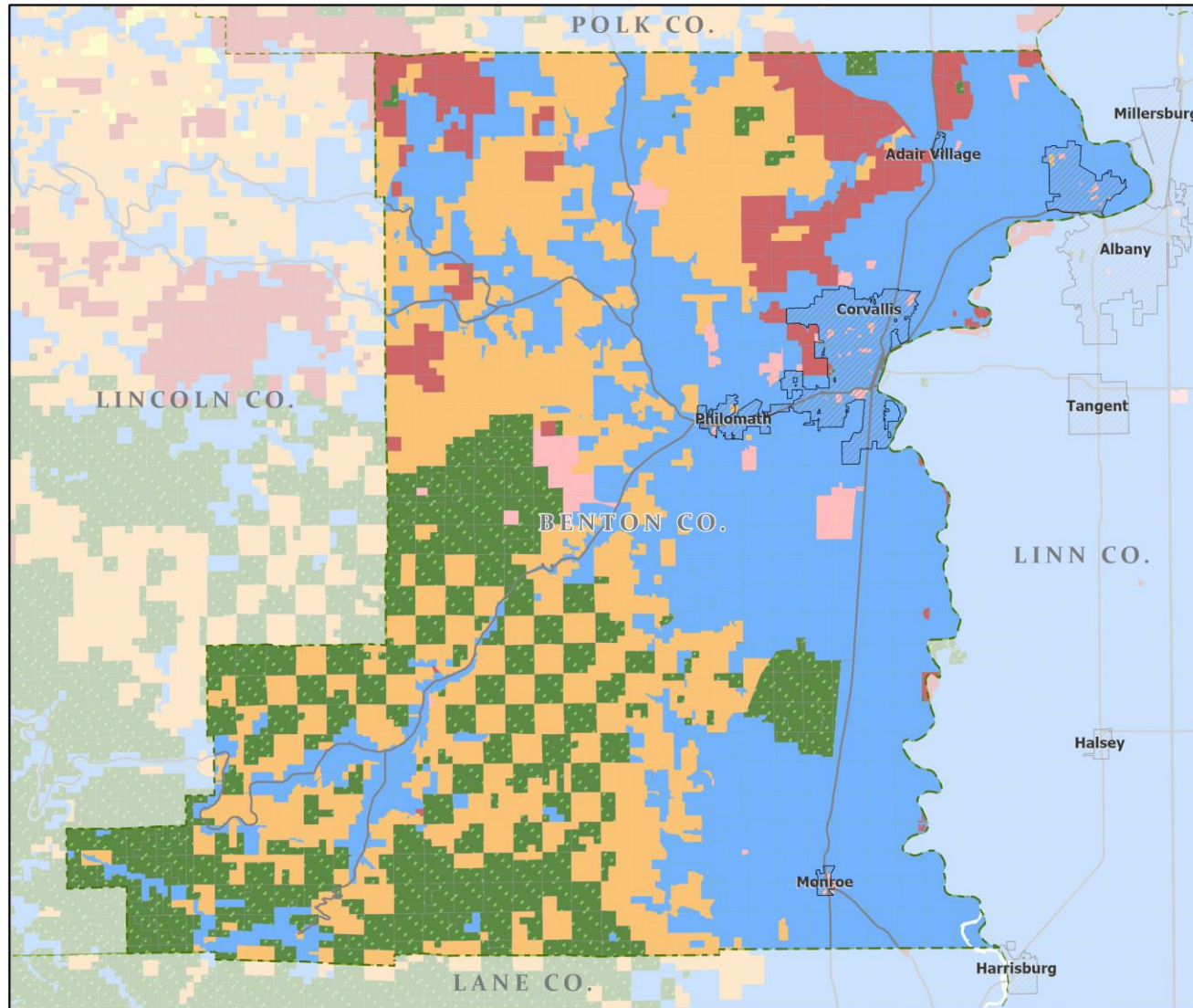


Portland State University,
Population Research Center,
May 2021.
www.pdx.edu/prc

Sources: Esri, USGS, NOAA
State of Oregon GEO;
Oregon Dept. of
Transportation.



Land Ownership: Benton County

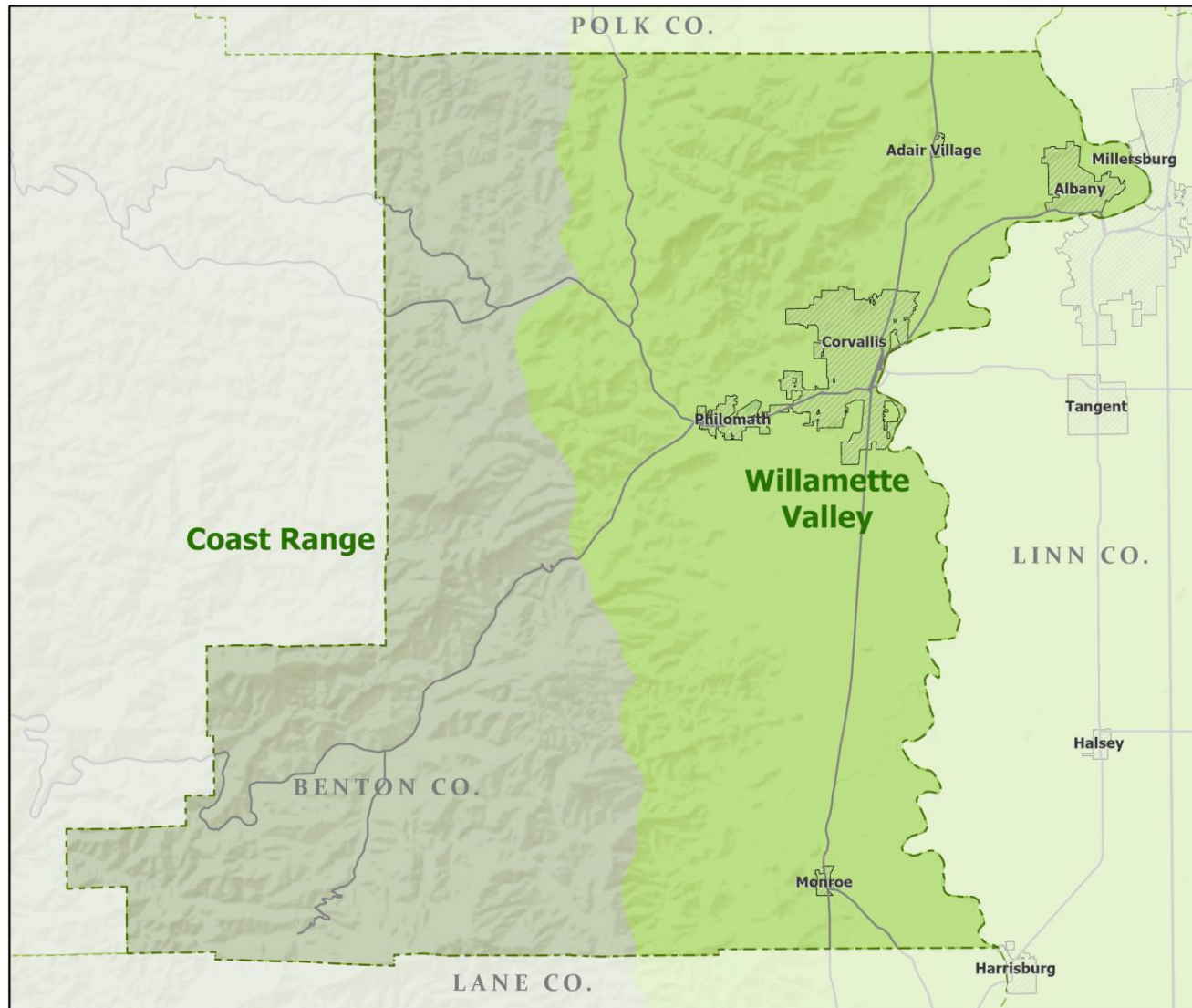


Portland State University,
Population Research Center,
May 2021.
www.pdx.edu/prc

Sources: Esri, USGS, NOAA
State of Oregon GEO;
Oregon Dept. of
Transportation.



Ecoregions: Benton County



- Counties
 - Incorporated Cities
 - Highways
- LEVEL III ECOREGIONS OF OREGON (2006)
- Coast Range
 - Willamette Valley

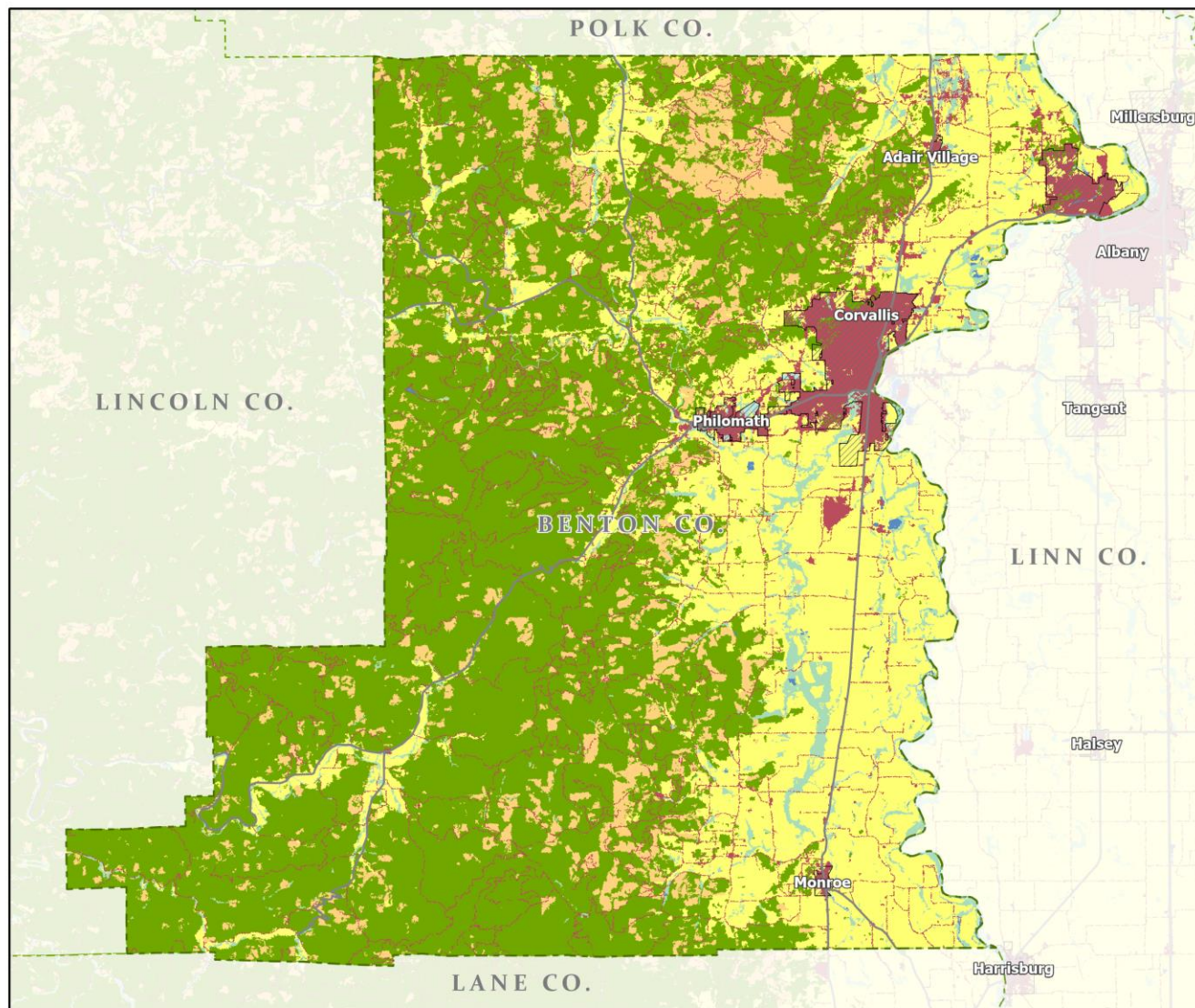


Portland State University,
Population Research Center,
May 2021.
www.pdx.edu/prc

Sources: Esri, USGS, NOAA
State of Oregon GEO;
Oregon Dept. of
Transportation.

0 20 Miles

Land Cover: Benton County



- Counties
- Incorporated Cities
- Highways

NATIONAL LAND COVER

- Developed
- Cultivated Crops/Pasture/Hay
- Barren Land
- Forest
- Grasslands/Scrub/Sedge
- Lichens/Moss
- Wetlands
- Perennial Snow/Ice
- Open Water



Portland State University,
Population Research Center,
May 2021.
www.pdx.edu/prc

Sources: Esri, USGS, NOAA
State of Oregon GEO;
Oregon Dept. of
Transportation.

0 20 Miles