

Mineral Land Regulation and Reclamation (MLRR) Program Overview

Department of Geology & Mineral Industries (DOGAMI)

Providing earth science information and regulation to make Oregon safe and prosperous



DOGAMI delivers science and stewardship

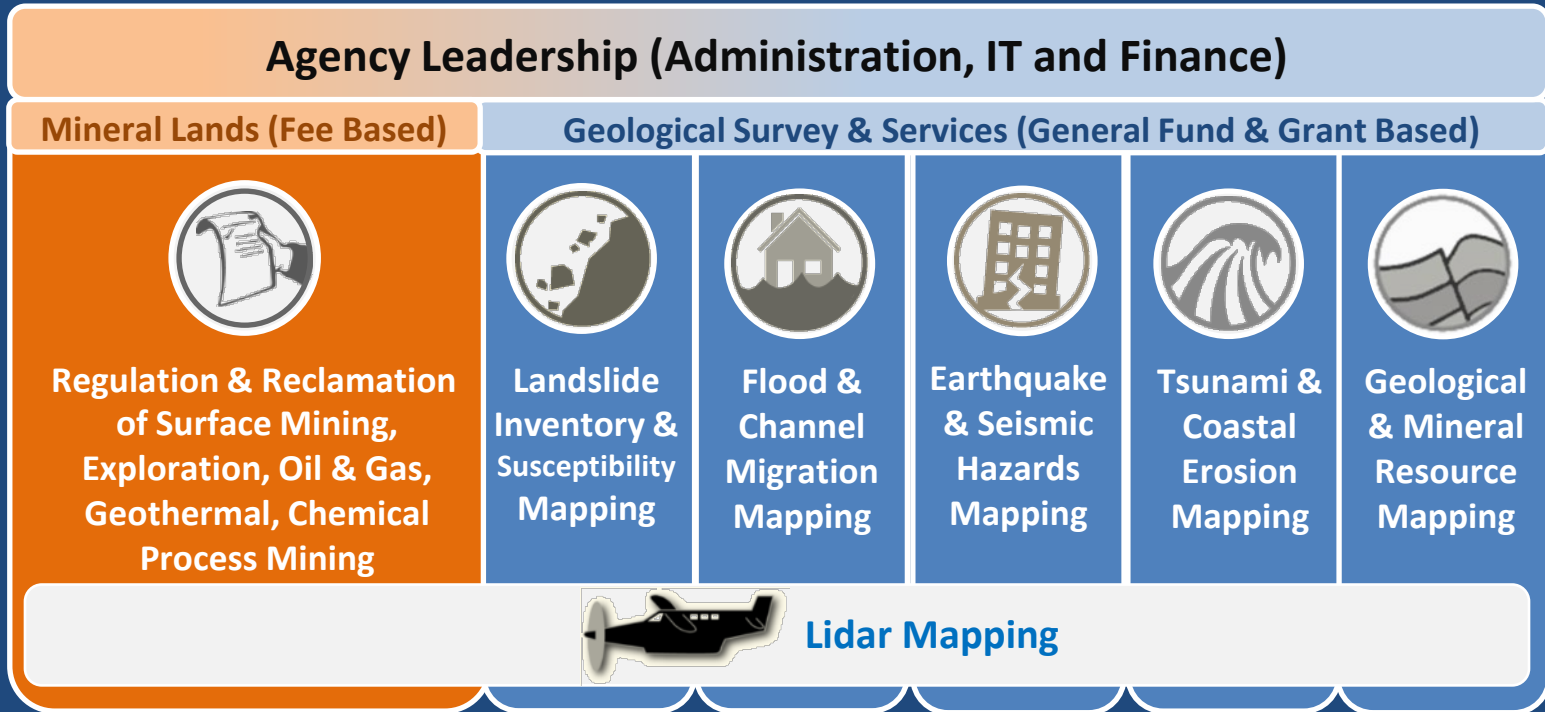
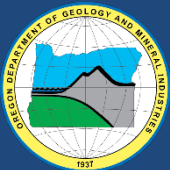


Image credits: Some images are derivatives of images created under a Creative Commons Attribution 3.0 Unported (CC BY 3.0) license, <http://creativecommons.org/licenses/by/3.0/>. The original icon images are attributed to Delapouite ("Falling rocks") and Lorc ("House," "Big wave") and the original versions can be found at <http://game-icons.net/>. Checklist image is derived from Microsoft clipart. Office building, Deb Schuller, DOGAMI; lidar aircraft is derived from Oregon Lidar Consortium logo, Jed Roberts, DOGAMI.



Mineral Land Regulation and Reclamation (MLRR)



100 Percent Fee Supported

Services:

Mineral resource permitting, site inspections, proactive management of developing issues, ensuring return of mined land to beneficial use

Clients:

Mining, Exploration, Oil, Gas, and Geothermal operators and industry, local communities, Tribal governments, state and federal agencies



MLRR by the numbers

- 1,358 permits across 8 regulatory programs
- Over 500 unique permit holders
- 87% of permits for surface mining
- 120,000 acres permitted as surface mines
- \$1,800,000 collected annually in fees
- 12 staff



Mineral Land Regulation & Reclamation

STATUTE

Surface Mining Programs
(ORS 517)

Drilling Programs

Oil & Gas (ORS 520)

Geothermal
(ORS 522)

RULE

DEQ
delegated
authority
for Water
Quality
Permits
(ORS 468B)

Division 30
–
Aggregate
Mining

Division 33
–
Exploration

Division 35
– Non-
Aggregate
Mining

Division 37
– Chemical
Process
Mining

Division 38 –
Voluntary
Reclamation

Division 10
– Oil & Gas
Rules

Division 15
– Seismic
Test Holes

Division 20
–
Geothermal
Regulations

FTE*

1.0 FTE

5.00 FTE

0.75 FTE

0.5 FTE

**Technical Staff supported by 3.25 FTE administrative/IT support and 1FTE Program Manager*

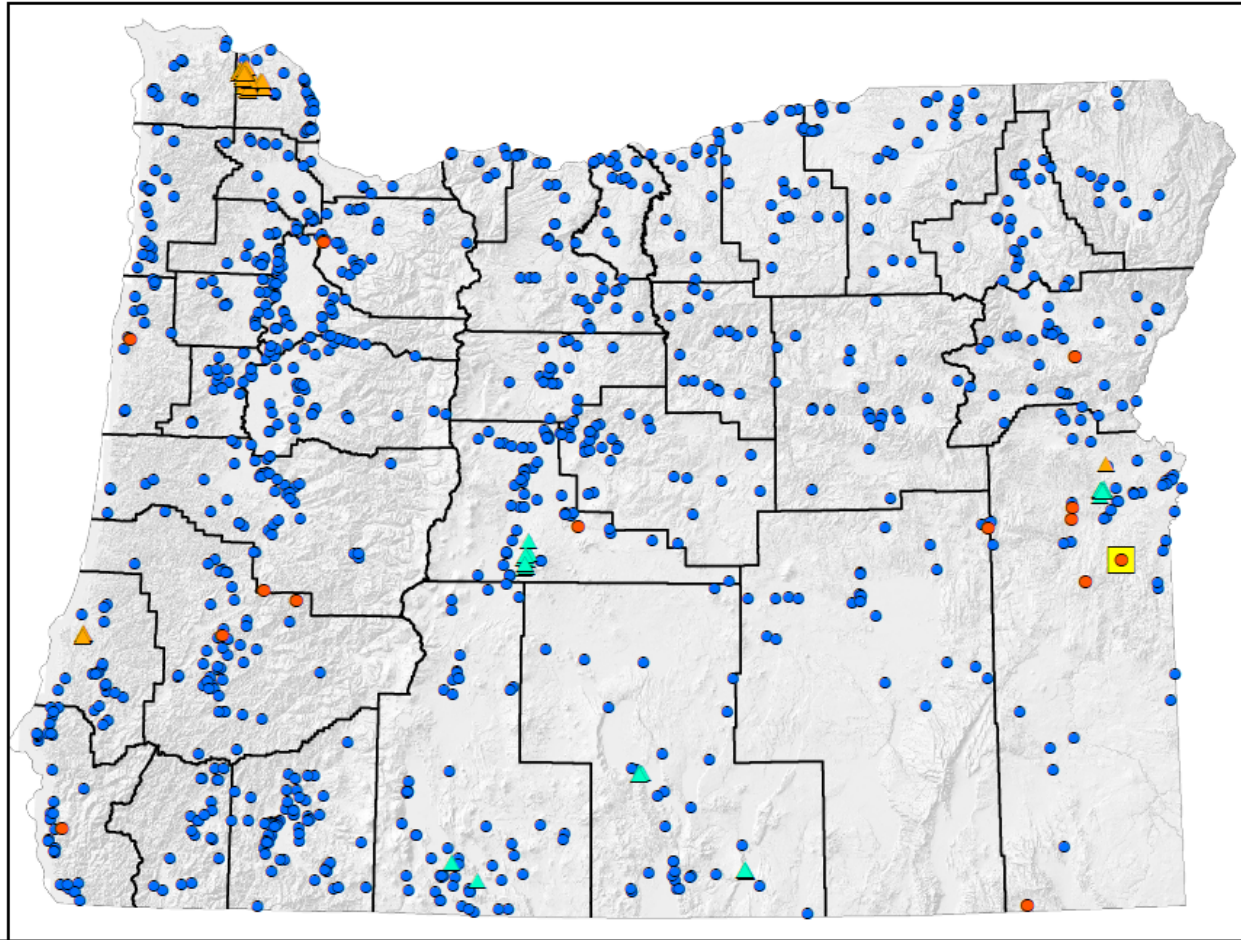


DOGAMI Permits

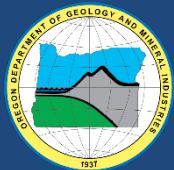


Oregon Department of Geology and Mineral Industries
Mineral Land Regulation & Reclamation Program
229 Broadalbin St. SW
Albany, OR 97321
Tele: 541-967-2039
Fax: 541-967-2075

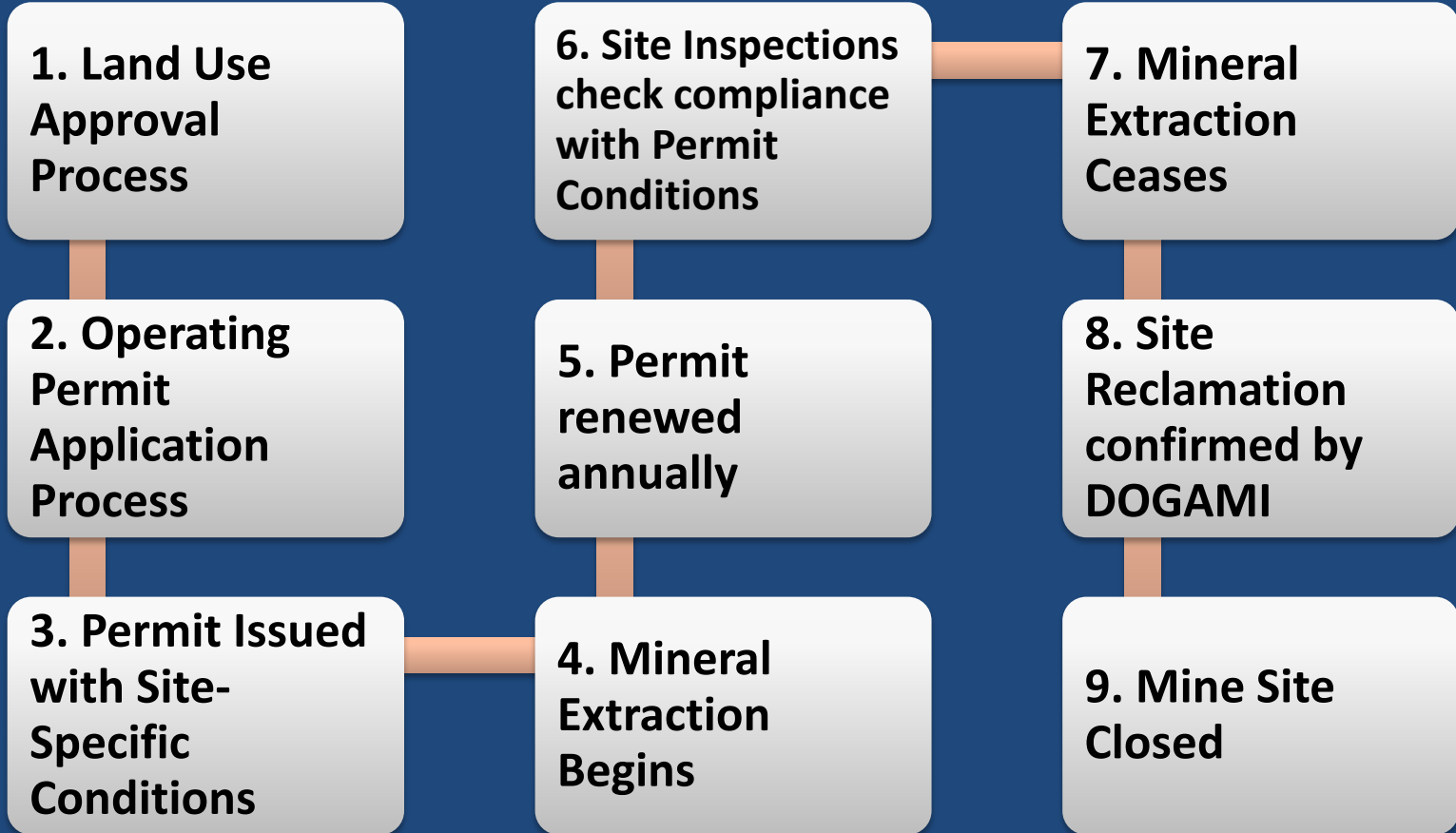
- Mine Sites
- Mineral Exploration
- Chemical Process
- ▲ Gas Wells
- ▲ Geothermal Wells



Prepared By: E. Buchner / 5-19-2021

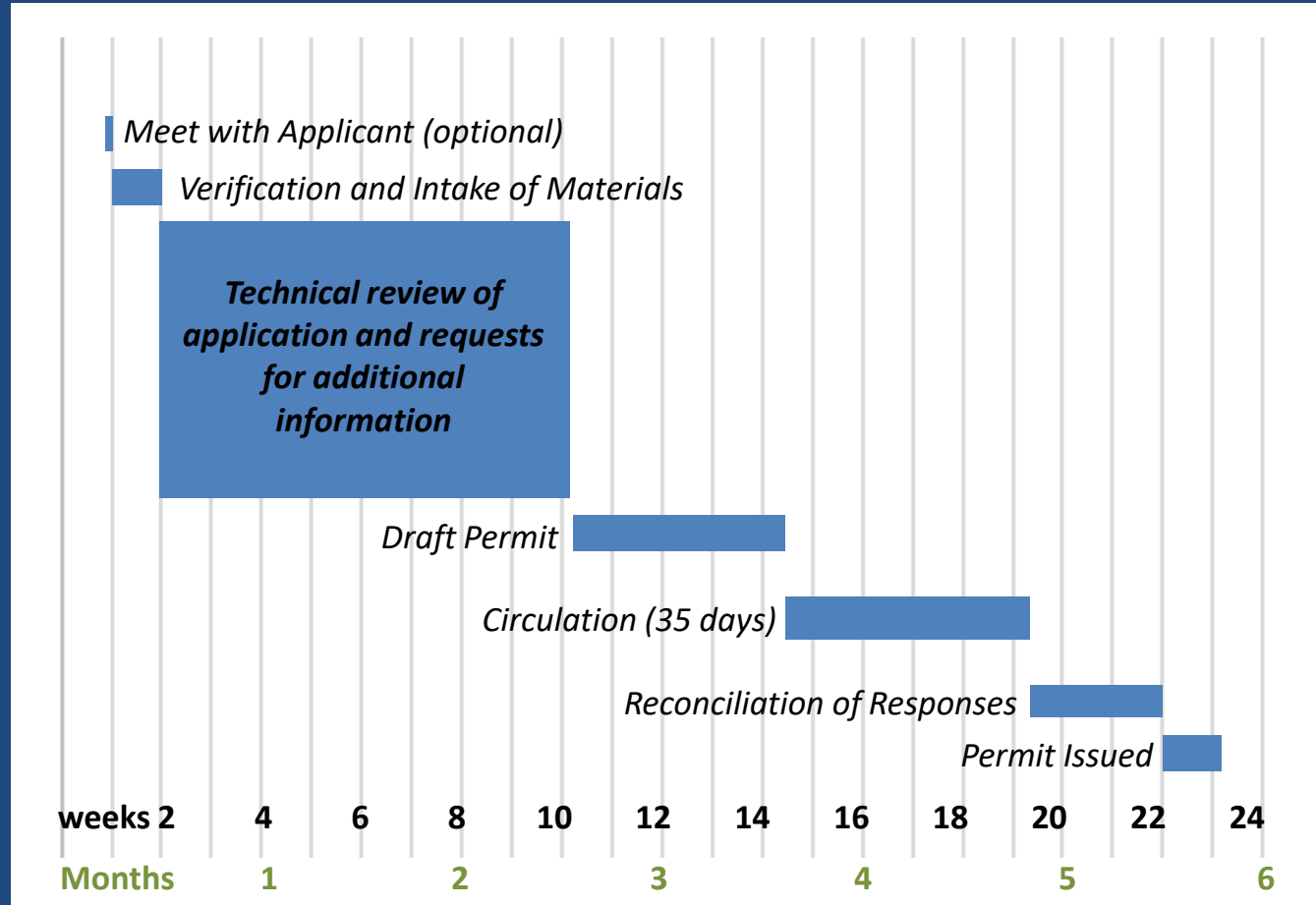


Oregon Surface Mining Process Overview



Operating Permit Application Process Timeline

- Pre-Application Meeting
- Application Received
- Application Review
 - Operating and Reclamation Plans
 - Required Maps
 - Site Inspection
 - Reclamation Security
- Draft Permit
- Circulation to Reviewing Agencies
- Response to Comments
- Final Permit Issuance



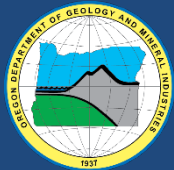
Program Accomplishments FY2019-2021

- Systematic review and standardization of procedures
- Paper site files scanned to create a digital repository
- Reduction in the average time to permit issuance by 30%
- Development of Civil Penalty Program
- Creation of ENGAGEe newsletter communication to permittees
<https://www.oregongeology.org/mlrr/engage.htm>



Focus Areas FY2021-2023

- Develop proposal for ePermitting [Budget Note HB 5010 (2021)]
- Continue proactive early engagement with applicants
- Improve compliance with consistent, clear communication
- Review satellite imagery to prioritize allocation of resources
- Increase site inspections (KPM#4)





THANK YOU

