

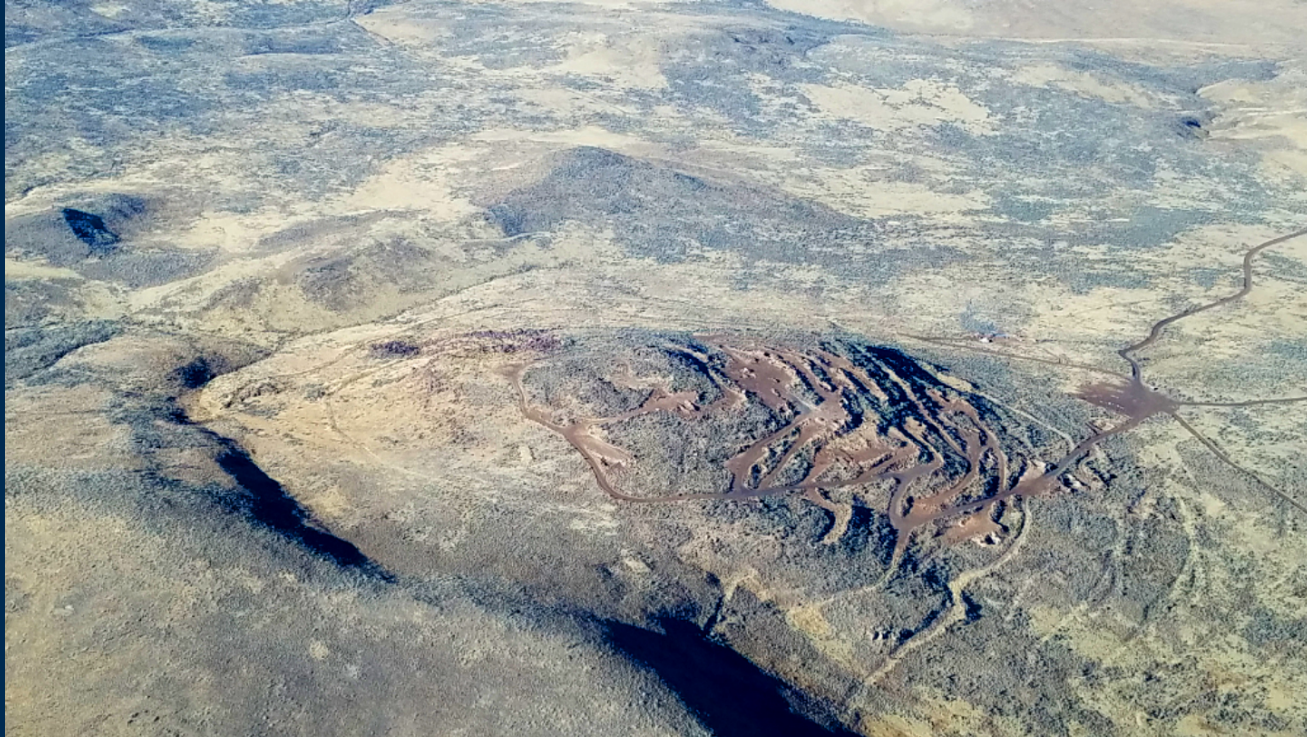
Grassy Mountain Project, Malheur County, Oregon
Presented by: Carlo Buffone

PARAMOUNT  GOLD

Grassy Mountain Project



NYSE
American
PZG



Project Location



NYSE
American
PZG

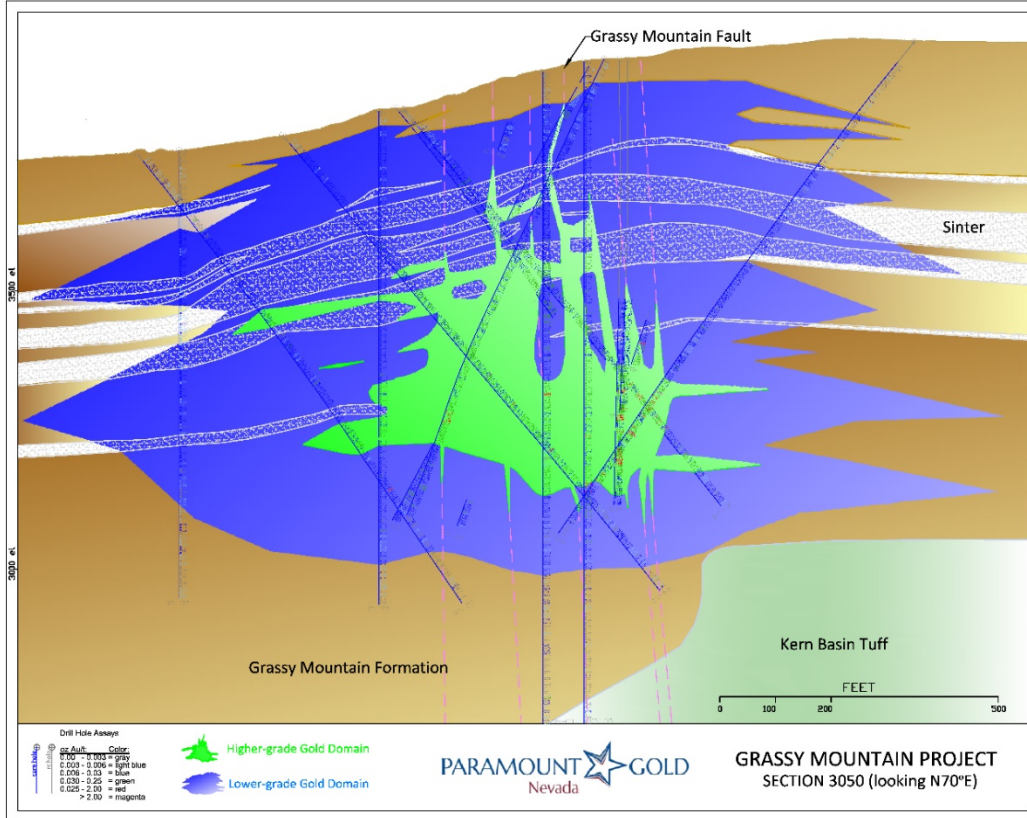


- ❑ 20 miles S of Vale
- ❑ 30 miles SSW of Ontario
- ❑ 70 miles West of Boise

22 Million Years in the Making



NYSE
American
PZG

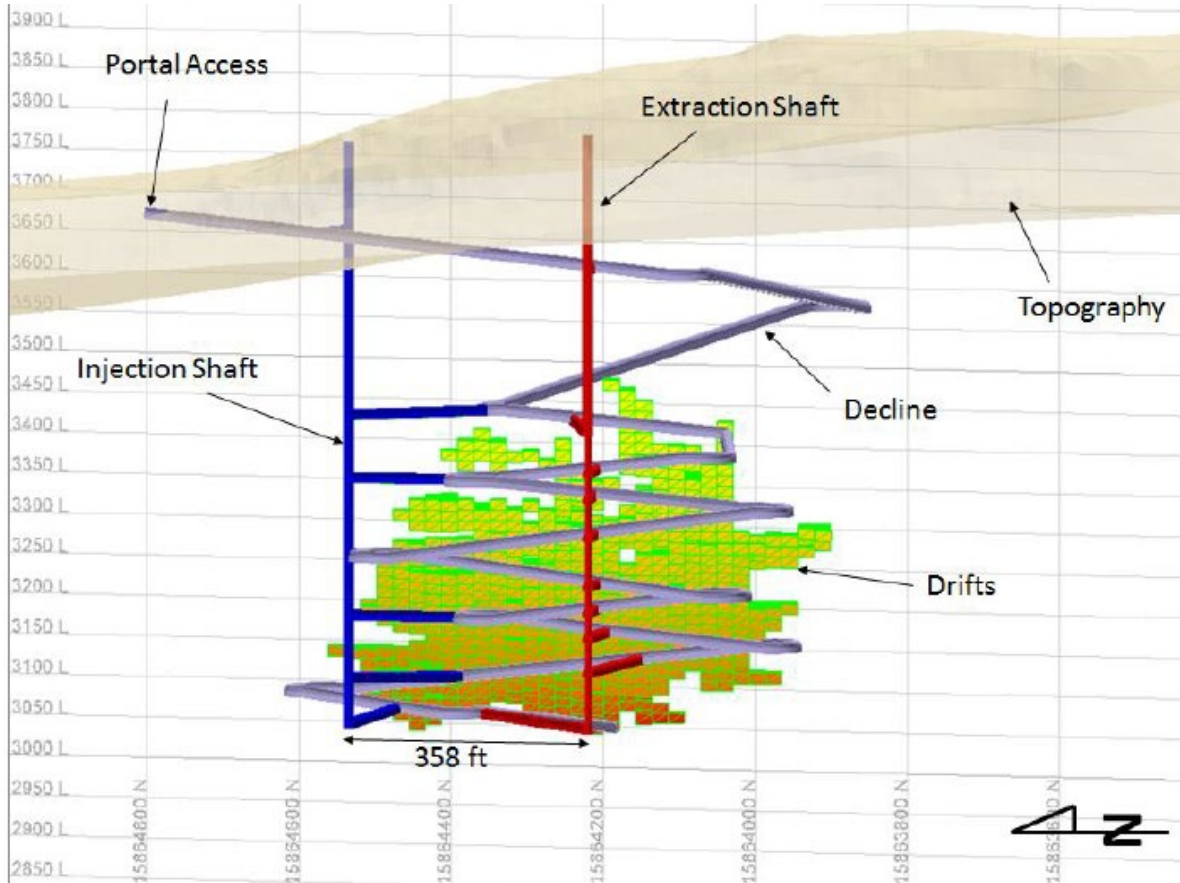


➤ \$675 Million

Underground Mine



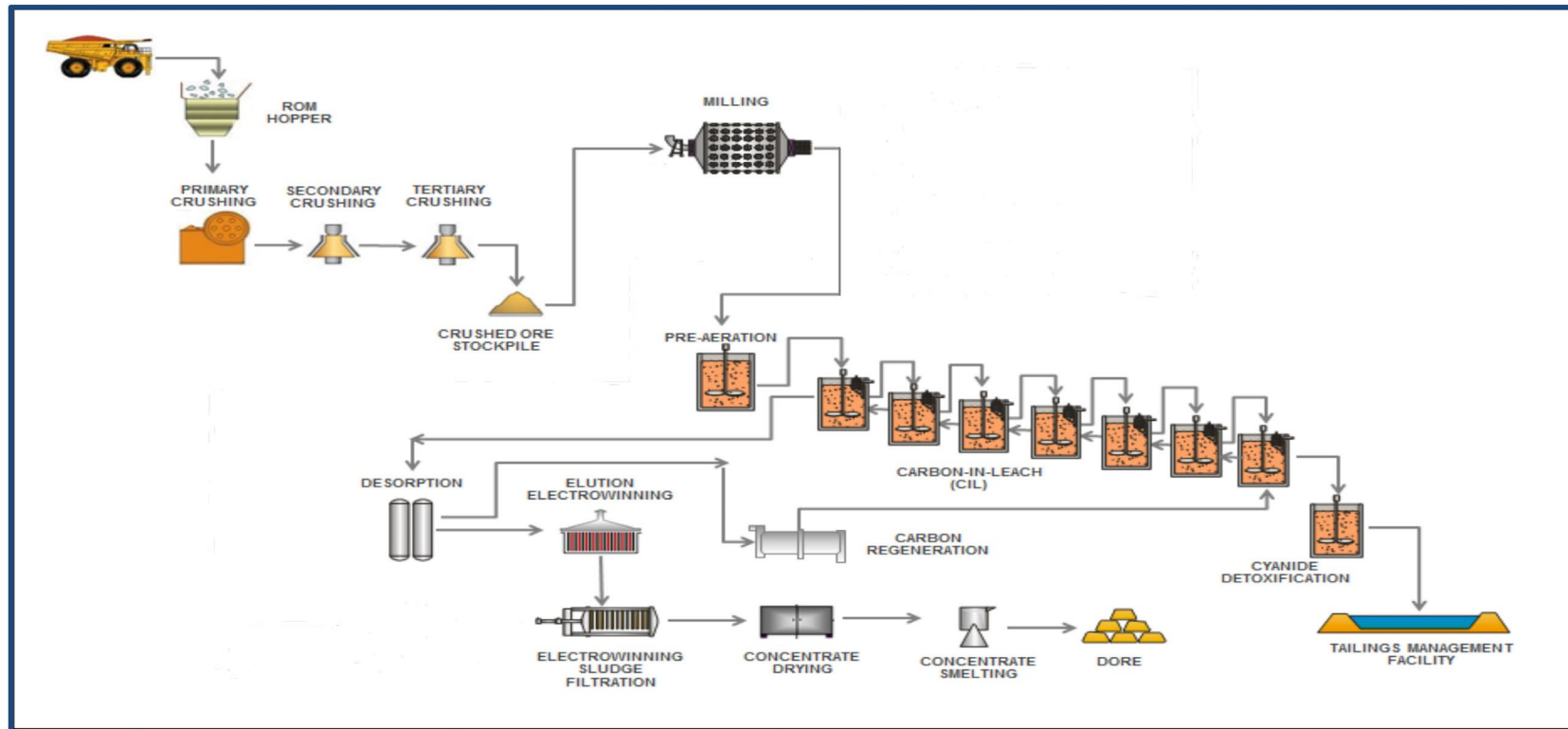
NYSE
American
PZG



Enclosed and Proven Process



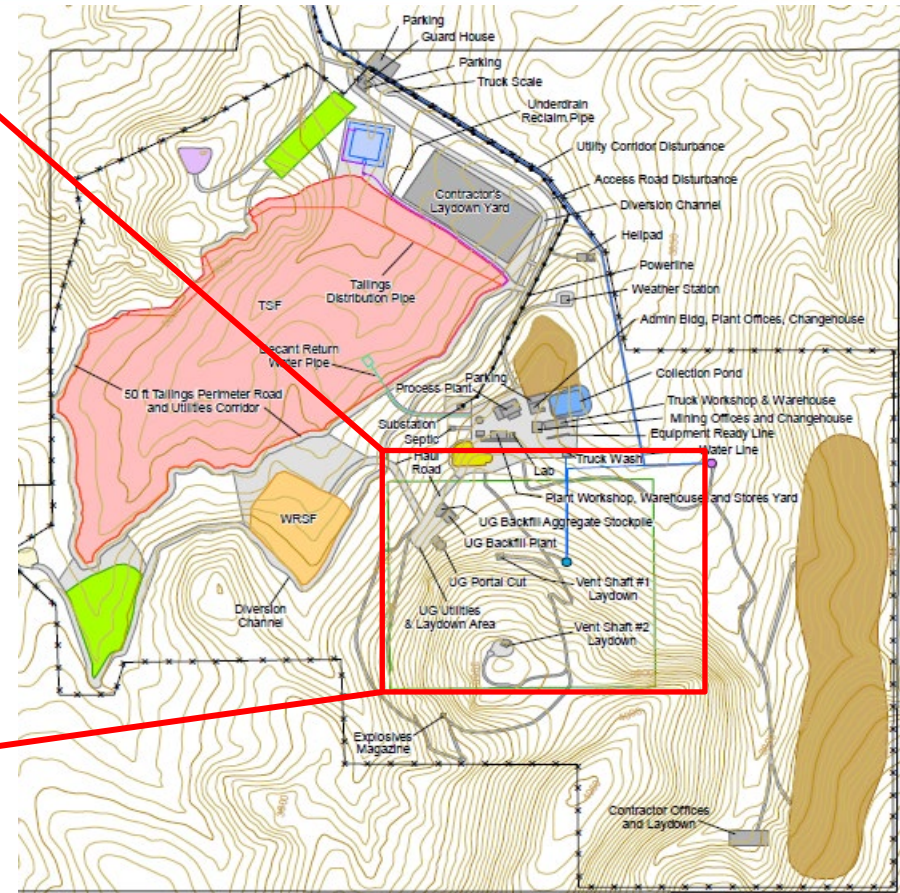
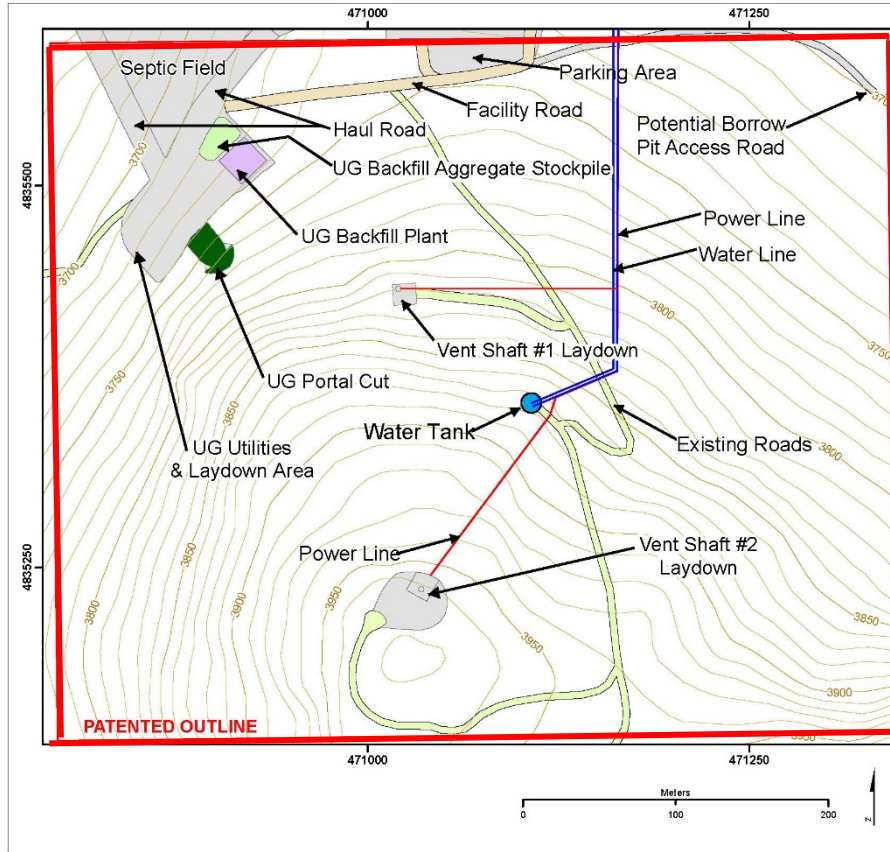
NYSE
American
PZG



The Mine Site

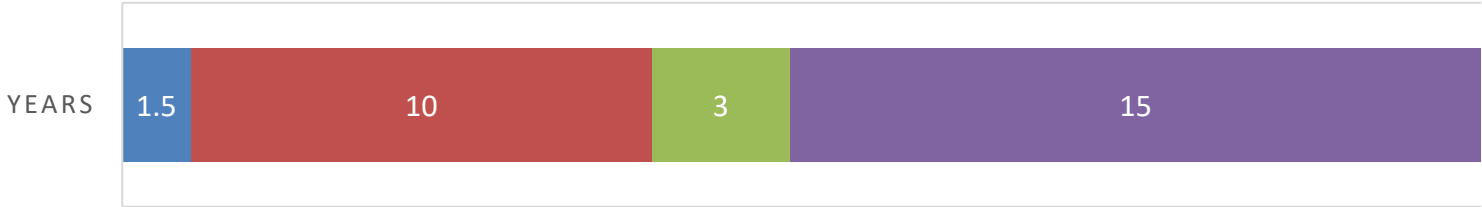


NYSE
American
PZG



TIMELINE

■ Construction ■ Mining Processing ■ Closure and Reclamation ■ Monitoring



Economic Highlights – Proposed Mine



NYSE
American
PZG

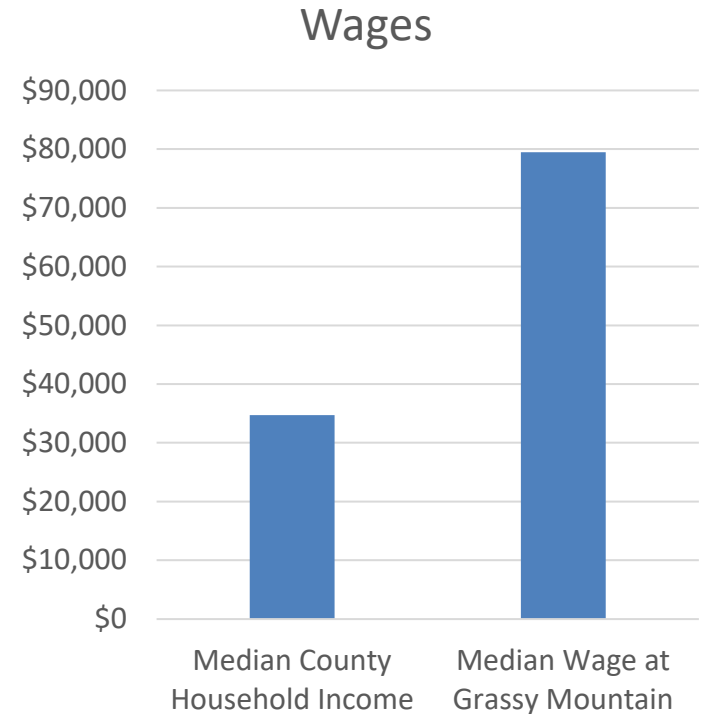
\$123 Million Investment

\$10 Million Annual Payroll

\$15 Million in Estimated Excise Taxes



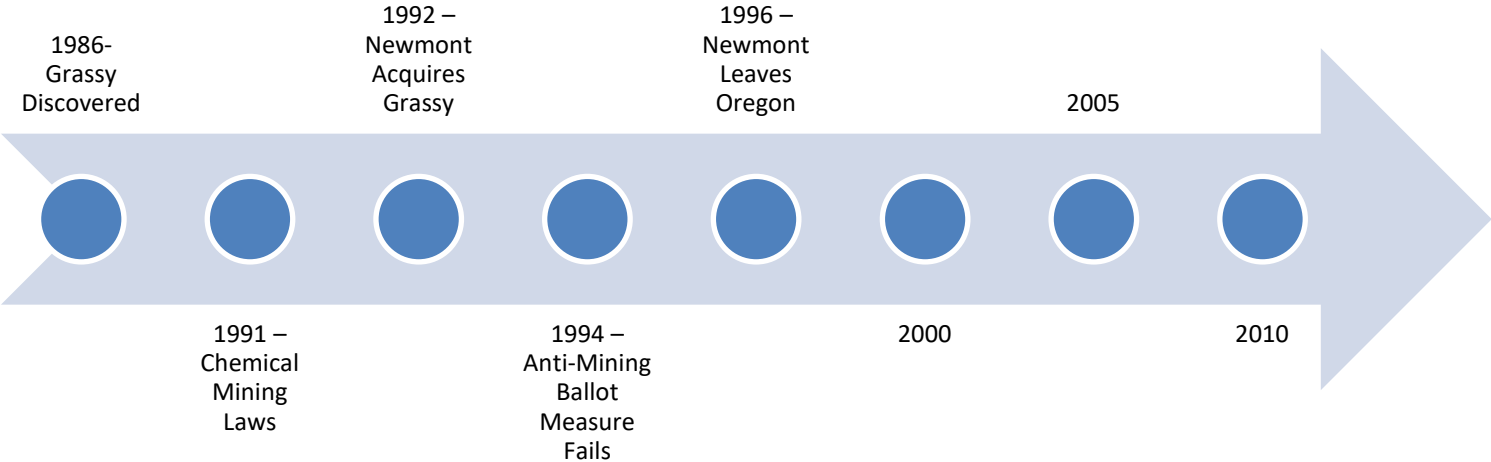
- 150 construction jobs
- 120 mining and admin jobs
- Wages above median county household income



Chemical Processing in Gold Mining in OR



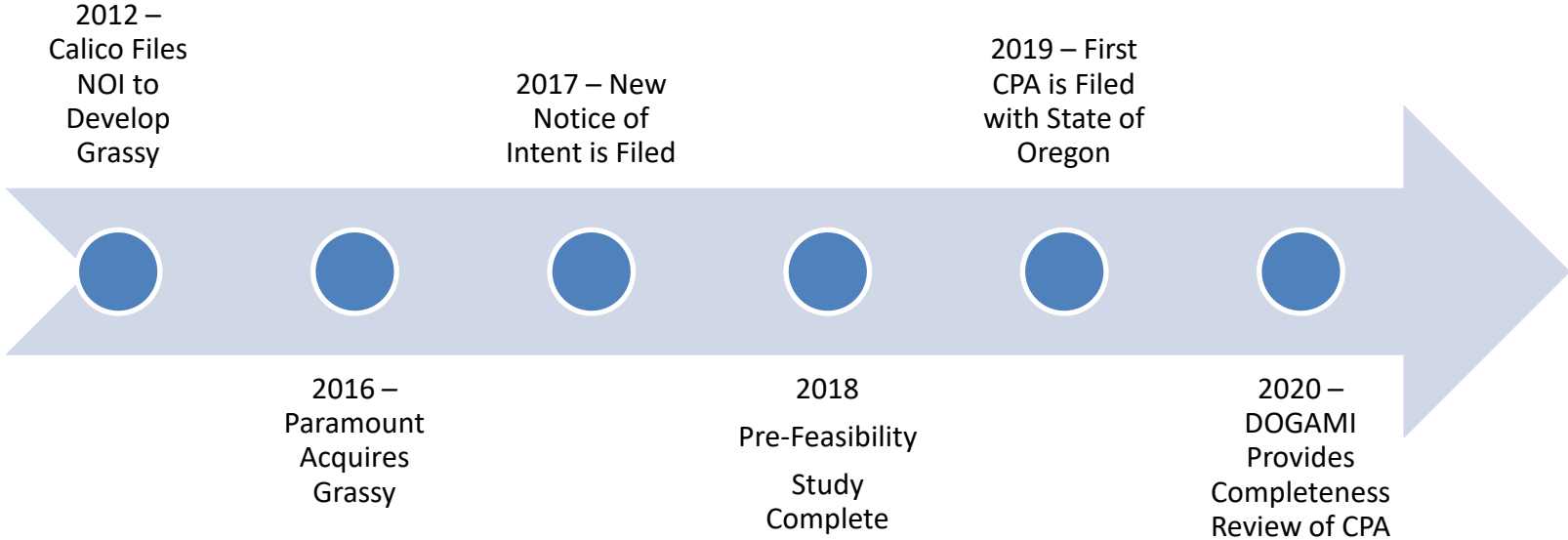
NYSE
American
PZG



Chemical Processing in Gold Mining in OR



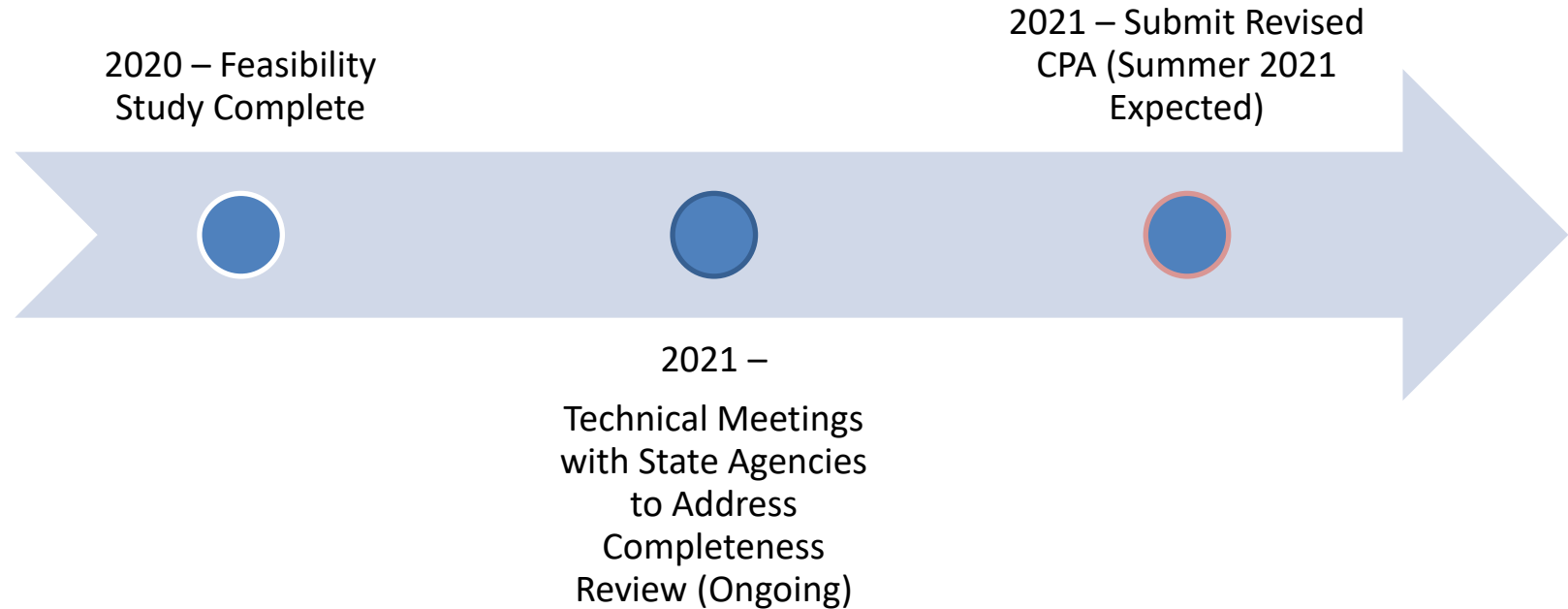
NYSE
American
PZG



Chemical Processing in Gold Mining in OR



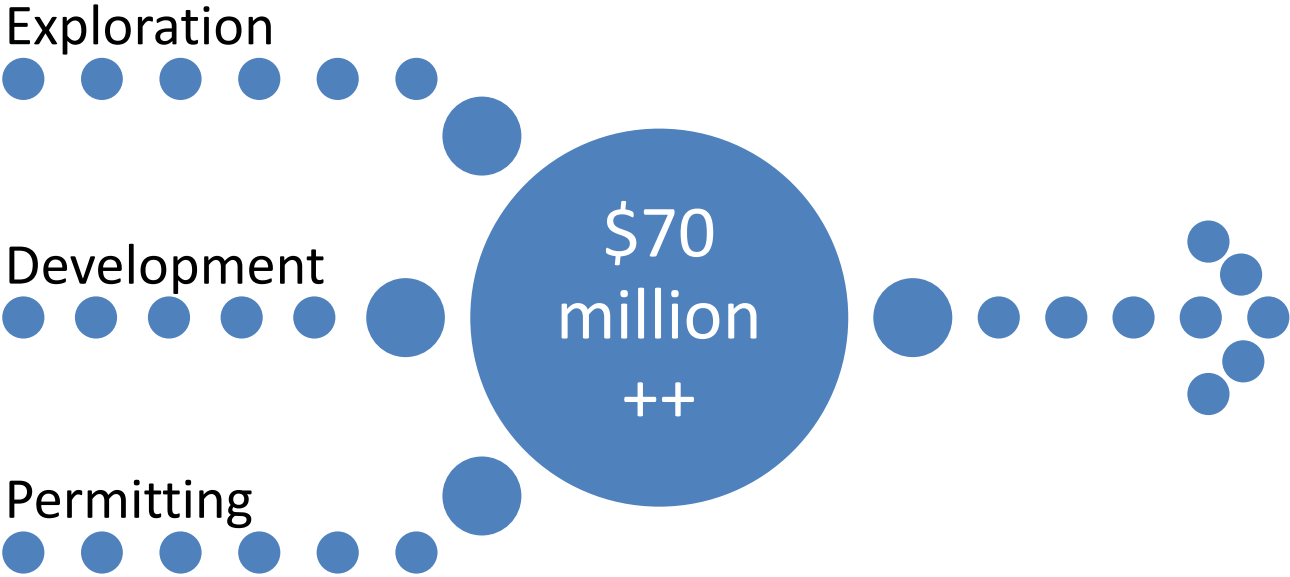
NYSE
American
PZG



Grassy Mountain



NYSE
American
PZG





- Time and Capital to Develop Projects (Grassy and Sector)
- Perceived permitting risk (Grassy and Sector)
- No other advanced stage projects developed (Sector)
- Environmental Landscape (Sector)



- Nurturing strong community support (Grassy and Sector)
- Hire and buy local when possible (Grassy and Sector)
- Going beyond the financials – socio economic impacts (Grassy and Sector)
- Extending mine life through exploration (Grassy)
- Economic diversification of local economy (Eastern Oregon)
- Review mining laws based on lessons learned from Grassy Mountain

Thank You



NYSE
American
PZG

