



Testimony by City of Wilsonville Mayor Julie Fitzgerald on Redistricting:

Legislature Should Unite the Wilsonville Community of Interests in One Single South Metro Region Legislative District and Not Divide Us

Scheduled for public hearing on April 10, 2021, before a concurrent meeting of the Senate Committee on Redistricting and House Special Committee on Redistricting

Submitted April 9, 2021, via email to oregon.redistricting@oregonlegislature.gov

Chairs Taylor and Salinas, Vice-Chairs Knopp and Davis, and Members of the Committees:

On behalf of the City of Wilsonville City Council, I am testifying on our community's strongly-felt, compelling redistricting preference. **Our top priority is to have all of Wilsonville—including the Charbonneau District and adjacent designated urban reserves—be included in one single legislative district**, be that for the Oregon House of Representatives, Oregon Senate or United States Congress. The dilution of Wilsonville's Oregon legislative representation split among House and Senate districts is detrimental to our community's political aspirations and long-term common interests.

Placing Wilsonville in one legislative district meets all of the criteria set forth in ORS 188.010: All of Wilsonville is contiguous; utilizes existing geographic or political boundaries; does not divide communities of common interest; and is connected by transportation links, including I-5, local streets and Wilsonville's free SMART public-transit service.

The Wilsonville City Council's additional priority is to be included in legislative districts with another neighboring city of the South Metro Region with whom we share more communities of common interests, specifically in order of 1) West Linn, 2) Tualatin, and 3) Sherwood. No slight is intended to communities currently in our Oregon legislative districts; however, the Council believes that being placed in a district with one or more of the three nearby cities is preferable to the current situation where Wilsonville is divided among the three House Districts of 26, 37 and 39 and the three Senate Districts of 13, 19 and 20.

Please find following additional information in support of the City's legislative redistricting preferences. Thank you for your time and consideration of our testimony.

Sincerely,

Julie Fitzgerald, Mayor
City of Wilsonville

Documenting the Case for Wilsonville to Be Unified in One Single Legislative District with Neighboring Communities of the South Metro Region

ORS 188.010 describes the criteria used for creating legislative and Congressional districts in Oregon. As nearly as practicable, each district shall:

- be contiguous;
- utilize existing geographic or political boundaries;
- be of equal population;
- not divide communities of common interest; and
- be connected by transportation links.

The law also specifies that no district is to be drawn to favor any political party, incumbent legislator, or other person. Additionally, districts may not dilute the voting strength of any language or ethnic minority group.

Placing all of Wilsonville in one legislative district meets all of the criteria listed in ORS 188.010: all of Wilsonville is contiguous; utilizes existing geographic or political boundaries; does not divide communities of common interest; and is connected by transportation links, including I-5 and Wilsonville's SMART public-transit service.

A. Following is a specific review of findings that support a conclusion that all of Wilsonville should be placed in one single legislative district and not divided.

- **Be contiguous:**

By definition, all of the City of Wilsonville is contiguous, including the Charbonneau District south of the Willamette River and adjacent designated urban reserves for employment lands and residential areas. See Exhibit A: Map of Wilsonville, including Urban Expansion Areas and Urban and Rural Reserves.

- **Utilize existing geographic or political boundaries:**

The City of Wilsonville has an existing political boundary that is easily distinguished.

The Wilsonville area, including Charbonneau District, share certain characteristics of the North Willamette Watershed topographic features. Wilsonville lies in "topographic bowl," with Pete's Mountain to the east, Ladd Hill/Parrett Mountain to the west, Elligsen Hill and the Tualatin River watershed to the north, and Charbonneau District of south Wilsonville and the Willamette River to the south.

All of Wilsonville, including residents of the Charbonneau District, may participate in elections to elect the Mayor and City Councilors and Metro District 3 Councilor, as well as pay property taxes and receive City services.

- **Not divide communities of common interest:**

Residents of Wilsonville, located on the urbanized UGB edge of the greater Portland metro area, generally do their shopping, schooling and recreating in Wilsonville, which is a full-service city with most amenities readily available.

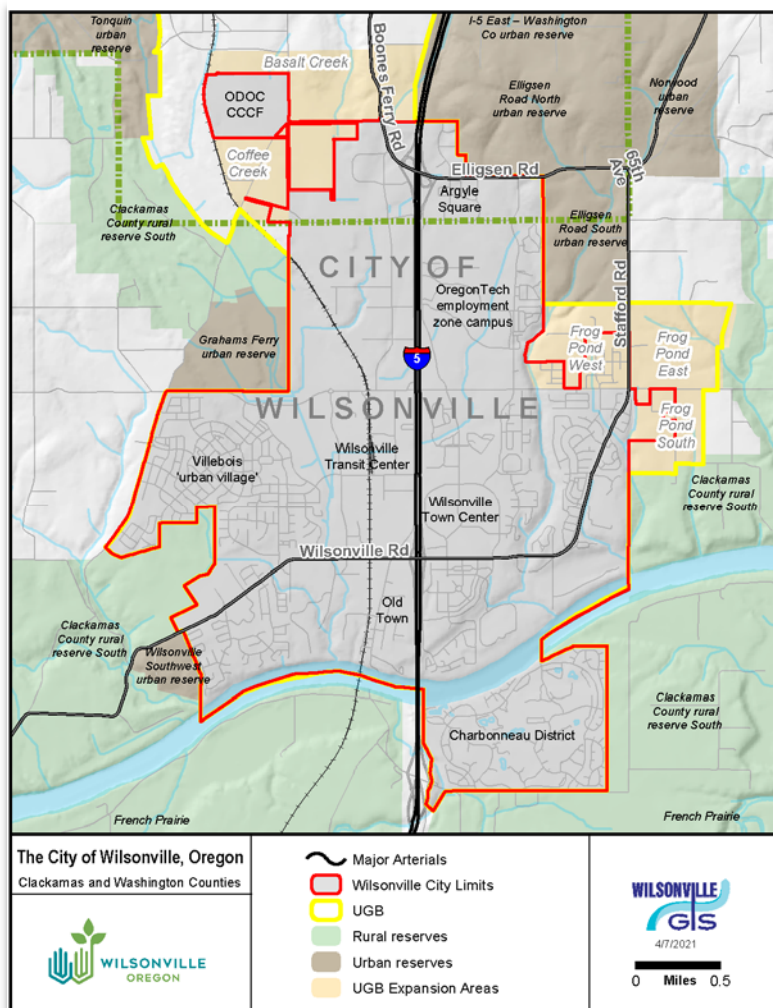
All of Wilsonville is served by City of Wilsonville utilities, including domestic water and wastewater treatment, that is funded by utility rate-payers and systems development charges on new commercial and residential construction.

All of Wilsonville is served with free public transit services of South Metro Area Regional Transit (SMART), one of two Federal Transit Administration urban-area transit providers serving the greater Portland region, that is funded primarily by Wilsonville businesses

All of Wilsonville is served by the Tualatin Valley Fire and Rescue (TVFR) District for emergency services of fire-fighting and medical calls funded by property-tax payers.

All of Wilsonville is served by the Clackamas County Sheriff's Office (CCSO) for law-enforcement services, including school resource officers for Wilsonville High School, funded by the City of Wilsonville.

Most Wilsonville students attend K-12 schools of the West Linn-Wilsonville School District No. 3 JT. Of approximately 9,230 school-age children attending public schools in Wilsonville,



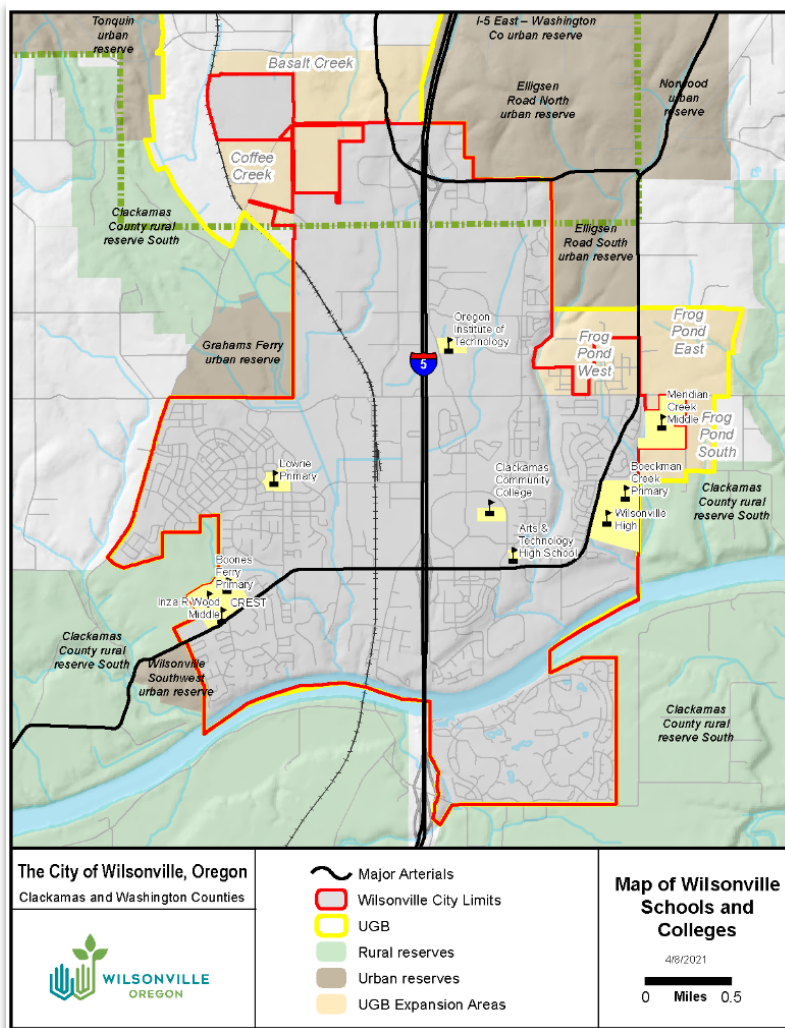
over 99% (9,206) attend primary, middle or high schools of the West Linn-Wilsonville School District located in Wilsonville. See Exhibit B: Map of Wilsonville Schools and Colleges.

As one of Oregon’s fastest growing cities for over 20 years, maintaining a community of common interest is important for our rapidly growing community. City leadership felt so strongly about this issue that in 2004 the City arranged a “land swap” between the Sherwood and West Linn-Wilsonville school districts so that children residing in the new Villebois development of western Wilsonville would attend school with other Wilsonville children.

Both Oregon Instituted of Technology’s Portland Metro Campus and Clackamas Community College’s Wilsonville Campus provide higher-education services to the students of the Wilsonville

schools, employers and the community. The colleges offer several programs, including high-school college-credit classes that contribute towards a bachelor’s degree or an associates degree, workforce development skills-training for Wilsonville employers’ employees, and community classes in a variety of topics.

Wilsonville has a substantial senior-citizen community, including five assisted-living facilities that are located in all residential quadrants of Wilsonville—south, east and west portions of Wilsonville. A substantial portion of the community’s Charbonneau district is composed of senior citizens who rely on City services. The City of Wilsonville operates a very active public seniors program of various social and physical-fitness activities based at the City’s Community Service Building. SMART provides ADA paratransit and dial-a-ride service to all areas of Wilsonville, with a focus on senior residents of Charbonneau.



Already, many residents who reside in adjacent UGB urban-reserve expansion areas view themselves as “Wilsonville residents” or conduct activities like shopping, worshipping and socializing in Wilsonville. Residents located immediately east in the Frog Pond/Advance area, north towards Norwood, west towards Ladd Hill and just south of the Willamette River use Wilsonville as their “home-base” city, representing a community of common interest.

In the 2011 Legislative Redistricting process, Wilsonville was divided between the two House Districts 26 and 39 and between the two Senate Districts of 13 and 20. Charbonneau was segmented away from the rest of Wilsonville into the largely rural House District 39 and State District 20 on the premise that the Canby School District boundary served as better indicator of community of interest than the Wilsonville City, Metro Urban Growth Boundary and the social connections with the rest of the City of Wilsonville. This decision was a mistake in the view of the Wilsonville City Council, which can be rectified by the 2021 Legislative Redistricting process. See Exhibit F: Wilsonville State Legislative Districts Maps and Notes.

The Charbonneau District, composed of over 1,600 households with approximately 2,600 residents is primarily a retirement community that includes a golf course and an assisted-living facility with memory care and hospice services. The Canby School District has confirmed that there are 24 students, or less than 1% of all Wilsonville K-12 students, currently enrolled from the 97070 Wilsonville zip code as of March 31, 2021. Of approximately 9,230 school-age children attending public schools in Wilsonville, over 99% (9,206) attend primary, middle or high schools of the West Linn-Wilsonville School District.

Charbonneau residents view Wilsonville as their community of common interest, and seek to be part of legislative districts where they elect their city and Metro officials, serve on volunteer committees, use the Wilsonville Public Library, ride SMART transit services, and utilize senior services and participate in programs at the Wilsonville Community Center.

- **Be connected by transportation links:**

All of Wilsonville is connected by transportation links, including Wilsonville’s SMART free public-transit service to all locations in town. While growing, Wilsonville has strived to be a compact community that provides multiple transportation options, including by vehicle, walking, biking or public transit.

The Charbonneau District of Wilsonville is connected by transportation links, including I-5 and SMART transit service, to the greater Wilsonville Town Center area, which serves as Charbonneau residents’ primary retail shopping center. The transportation links of Boeckman and Stafford Roads unite the Frog Pond urban reserve with the rest of the community. Similarly, Boones Ferry and Graham Ferry Roads and Day Street unite the Basalt Creek urban reserve expansion area with the rest of the City.

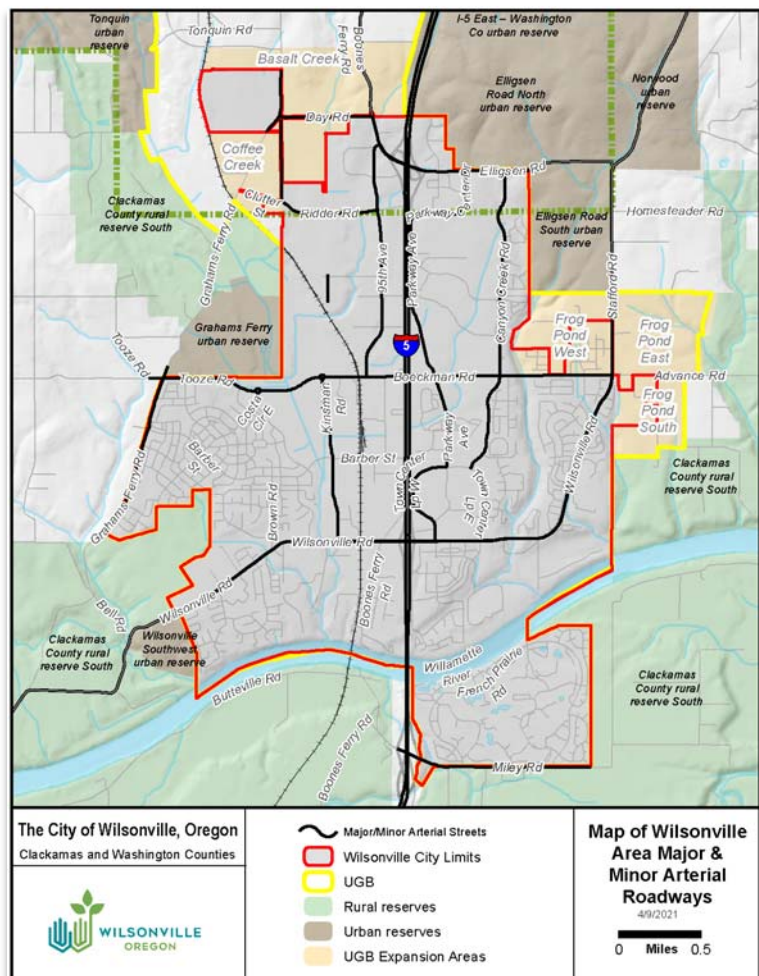
Several major and minor arterials connect the Wilsonville community:

North-South roadway connections:

- I-5 integrates the entire community from the south-end Charbonneau district to the north-end Coffee Creek/Elligsen area.
- Boones Ferry Road, SW 95th Avenue and Kinsman Road act as arterials running parallel and just west of I-5 connecting north and south Wilsonville.
- Parkway Avenue is a major arterial running parallel and just east of I-5 connecting north and south Wilsonville.
- Canyon Creek Road is a major arterial that connects central and north Wilsonville.

East-West roadway connections:

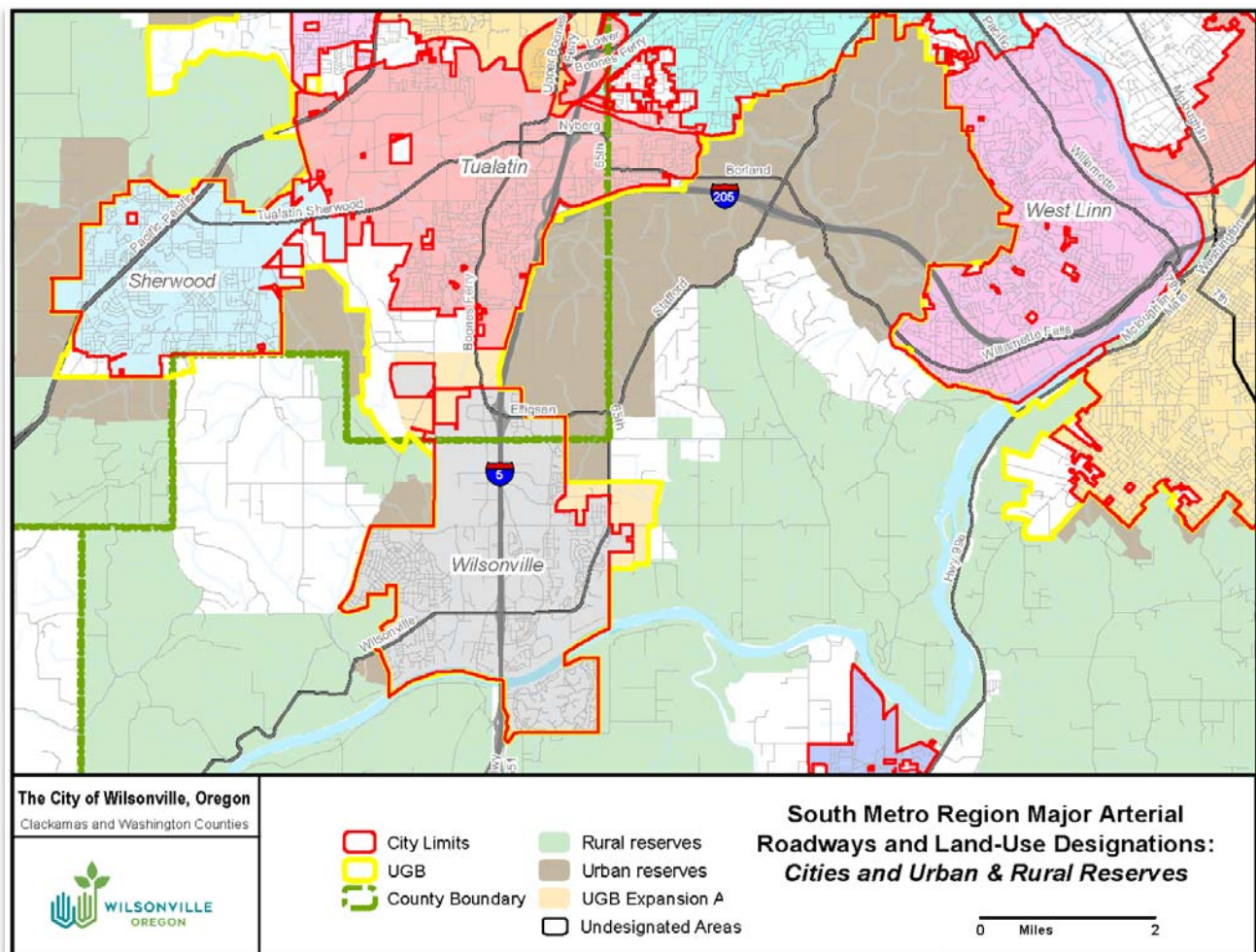
- Wilsonville Road is the community's primary residential and commercial east-west thoroughfare connecting southeast and southwest Wilsonville.
- Boeckman Road is becoming a major connecting arterial, connecting east-central Wilsonville with west-central Wilsonville and the Villebois urban village development.
- Elligsen Road is the community's primary industrial and commercial east-west thoroughfare connecting northeast and northwest Wilsonville. Also, the I-5 Exit 286 Boones Ferry/Elligsen Roads Interchange provides the westerly route via Elligsen, Boones Ferry and Day Road to the ODOC Coffee Creek Corrections Facility.



See Exhibit C: Map of Wilsonville Area Major & Minor Arterial Roadways.

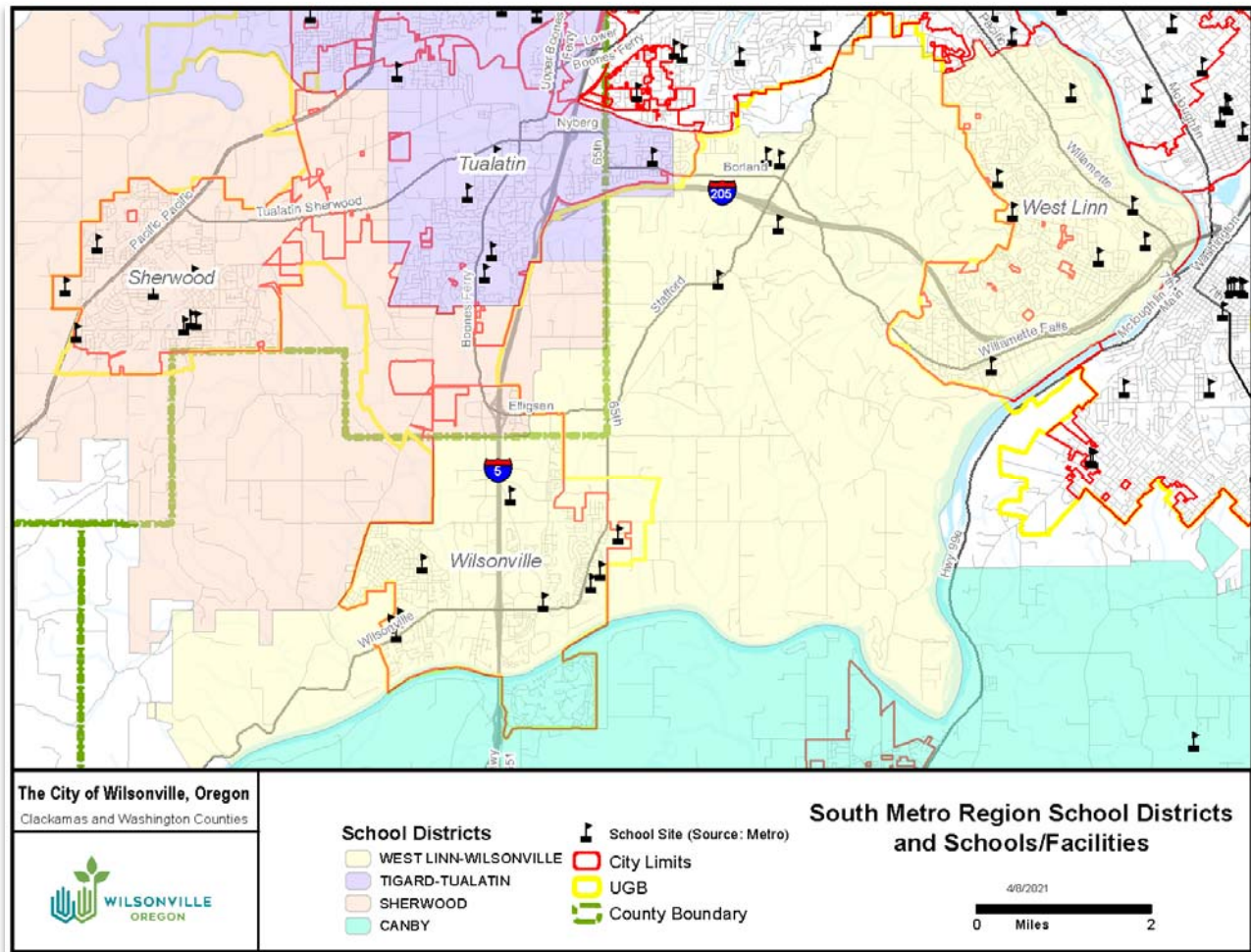
B. Following is a specific review of findings that support including Wilsonville in legislative districts with other neighboring cities of the South Metro Region with whom we share more common communities of interests, in order: 1) West Linn, 2) Tualatin, and 3) Sherwood.

See Exhibit D: Map of South Metro Region Major Arterial Roadways and Land-Use Designations: Cities and Urban and Rural Reserves (image below), and Exhibit E: Map of South Metro Region School Districts and Schools/Facilities.



1) West Linn

The cities of West Linn and Wilsonville share a common school district, West Linn-Wilsonville School District No. 3 JT. Most Wilsonville students attend schools of the West Linn-Wilsonville School District. Of approximately 9,230 school-age children attending public schools in Wilsonville, over 99% (9,206) attend primary, middle or high schools of the West Linn-Wilsonville School District.



Wilsonville schools play a pivotal role in the community for K-12 education, sporting activities, cultural events and providing key social services.

City of Wilsonville city government has a very close association with the West Linn-Wilsonville School District. City support for the West Linn-Wilsonville School District has included contributing \$2 million toward sports fields and facilities at Wilsonville High School, \$3 million towards land purchase for a new primary school to serve the developing Villebois area of west Wilsonville, and an \$800,000 public-art project with the West Linn-Wilsonville School District for the I-5/Wilsonville Road interchange area..

In 2004, the City of Wilsonville worked with the West Linn-Wilsonville School District and Sherwood School District to “trade land” to adjust district boundaries that resulted in the children of residents in the Villebois portion of west Wilsonville being able to attend West Linn-Wilsonville School District schools rather than Sherwood schools in order to allow most Wilsonville children to attend the same schools.

Wilsonville and West Linn are connected by transportation links, including Stafford Road and I-5/I-205.

2) Tualatin

The cities of Wilsonville and Tualatin are located approximately one mile apart, and eventually will grow to share a common city-limits boundary. The two cities share a common economic complexion, with each city having over 30% of its land-base zoned for industrial employment. Businesses tend to move back and forth between the two cities, both located along the South Metro I-5 Corridor, based on expansion/contraction mode or expiring lease terms.

Both Wilsonville and Tualatin are located in two counties: Clackamas and Washington Counties. Wilsonville and Tualatin are currently engaged in planning efforts with Washington County focused on the 595-acre Basalt Creek urban reserve area that unite the two communities.

Wilsonville and Tualatin are connected by various transportation links, including Boones Ferry Road, 65th Avenue, and I-5. Additionally, SMART provides public transit bus service, and the TriMet WES commuter rail train connect the two communities.

3) Sherwood

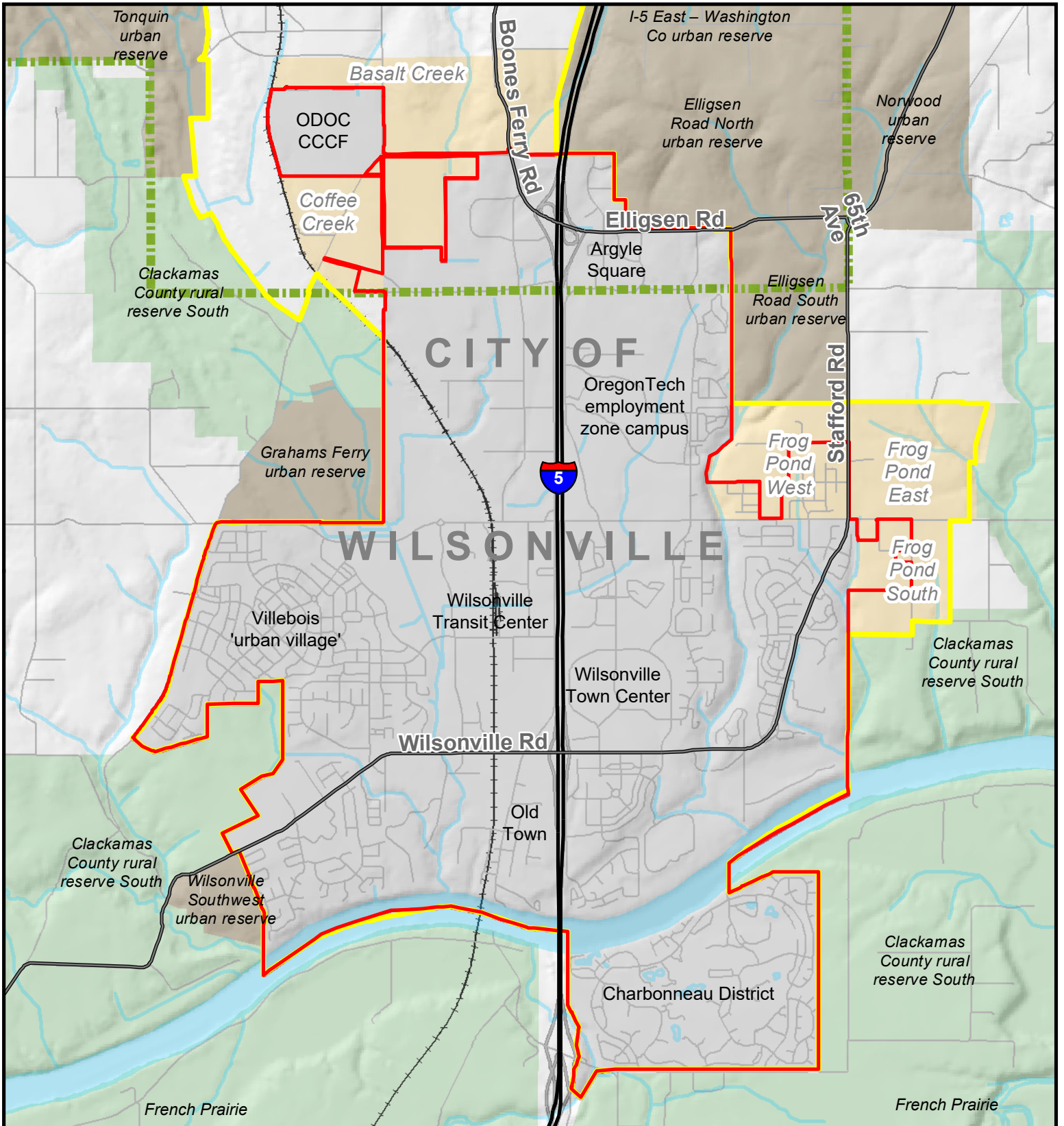
The cities of Wilsonville and Sherwood are located approximately 2.4 miles apart, and have been in the same legislative districts for over 20 years. Traditionally, the Wilsonville “Wildcats” and the Sherwood “Bowmen” have the annual fall homecoming football game.

Wilsonville and Sherwood have constructed a five-mile-long water transmission pipeline system that allows Wilsonville’s Willamette River Water Treatment Plant to serve Sherwood’s domestic water needs with 5 million gallons per day.

EXHIBITS ATTACHED:

- Exhibit A: Map of Wilsonville, including Urban Expansion Areas and Urban and Rural Reserves
- Exhibit B: Map of Wilsonville Schools and Colleges
- Exhibit C: Map of Wilsonville Area Major & Minor Arterial Roadways
- Exhibit D: Map of South Metro Region Major Arterial Roadways and Land-Use Designations: Cities and Urban and Rural Reserves
- Exhibit E: Map of South Metro Region School Districts and Schools/Facilities
- Exhibit F: Wilsonville State Legislative Districts Maps and Notes

EXHIBIT A



The City of Wilsonville, Oregon

Clackamas and Washington Counties



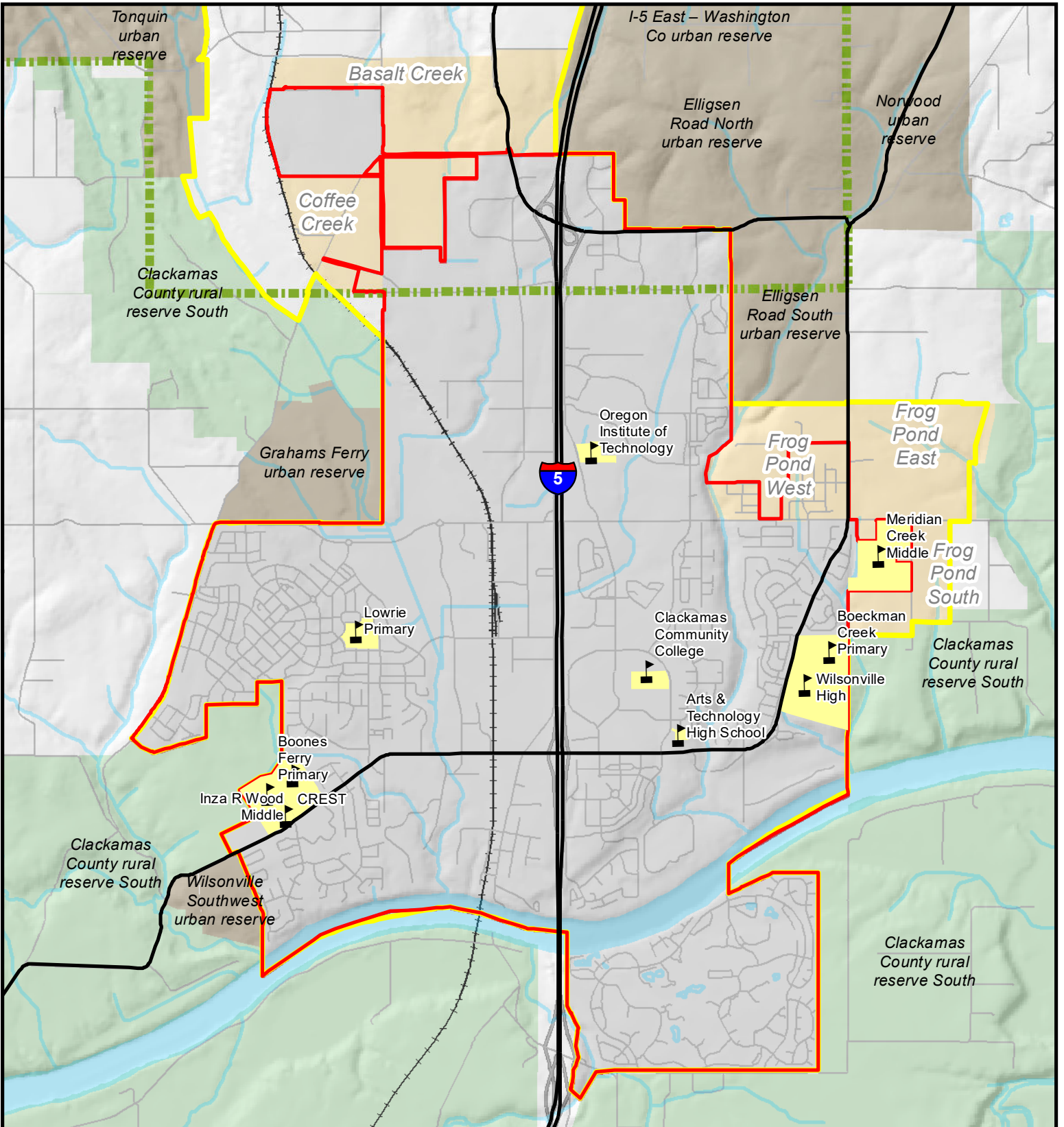
-  Major Arterials
-  Wilsonville City Limits
-  UGB
-  Rural reserves
-  Urban reserves
-  UGB Expansion Areas



4/7/2021



EXHIBIT B



The City of Wilsonville, Oregon
Clackamas and Washington Counties



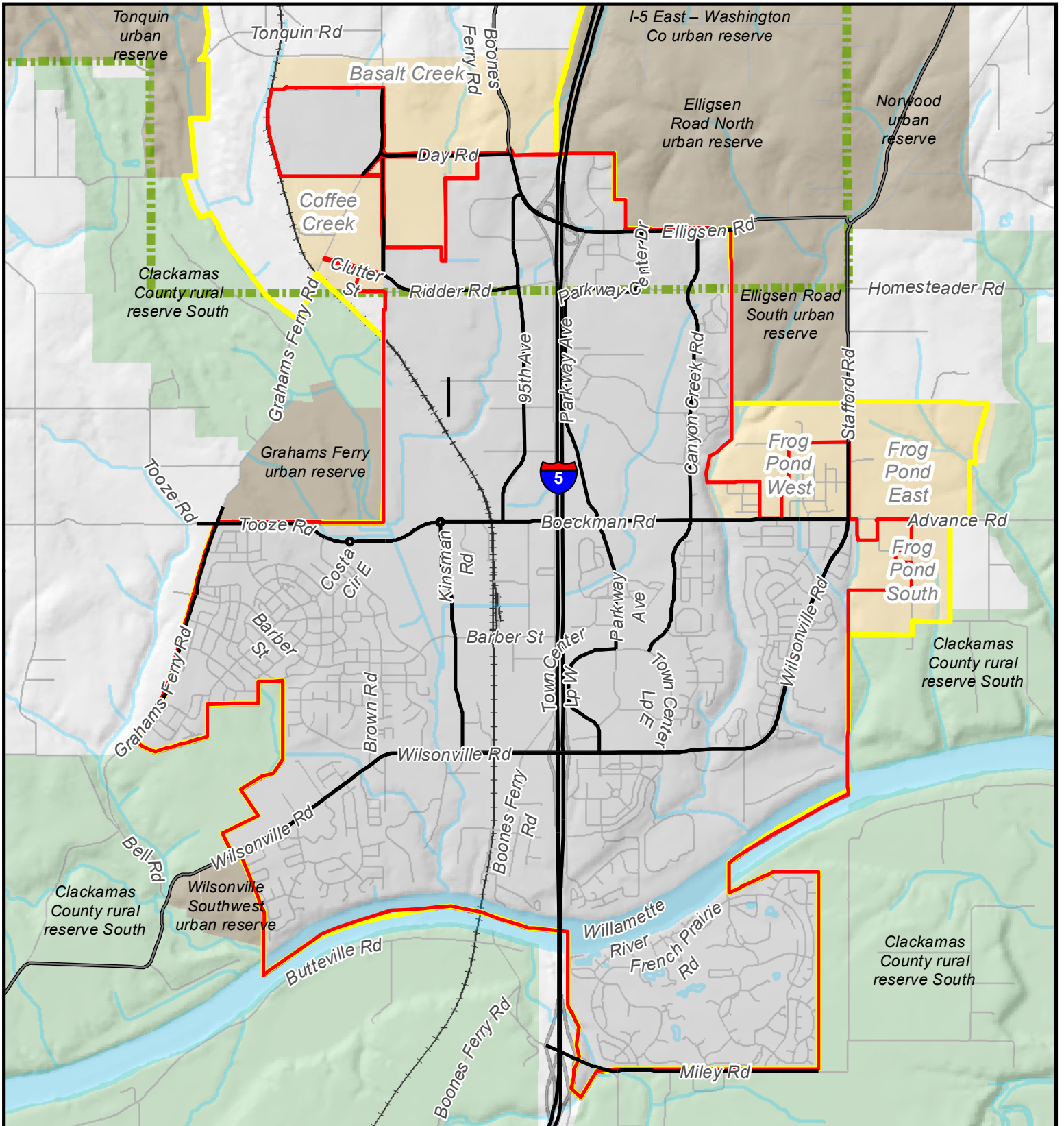
-  Major Arterials
-  Wilsonville City Limits
-  UGB
-  Rural reserves
-  Urban reserves
-  UGB Expansion Areas

Map of Wilsonville Schools and Colleges

4/8/2021









EXHIBIT C



The City of Wilsonville, Oregon

Clackamas and Washington Counties

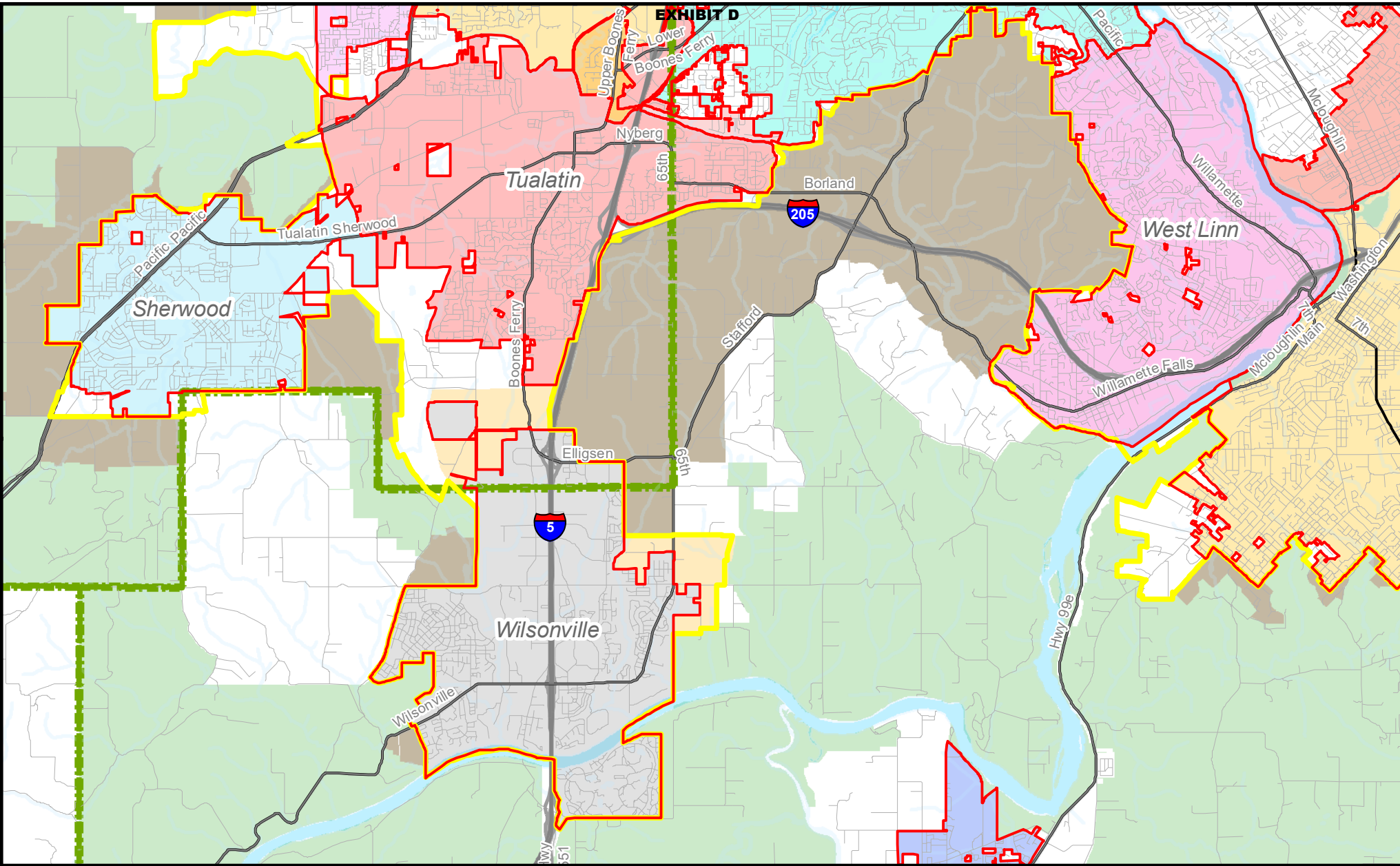


-  Major/Minor Arterial Streets
-  Wilsonville City Limits
-  UGB
-  Rural reserves
-  Urban reserves
-  UGB Expansion Areas

Map of Wilsonville Area Major & Minor Arterial Roadways

4/9/2021

0 Miles 0.5



The City of Wilsonville, Oregon
 Clackamas and Washington Counties



- City Limits
- UGB
- County Boundary
- Rural reserves
- Urban reserves
- UGB Expansion A
- Undesignated Areas

**South Metro Region Major Arterial Roadways and Land-Use Designations:
 Cities and Urban & Rural Reserves**

0 Miles 2

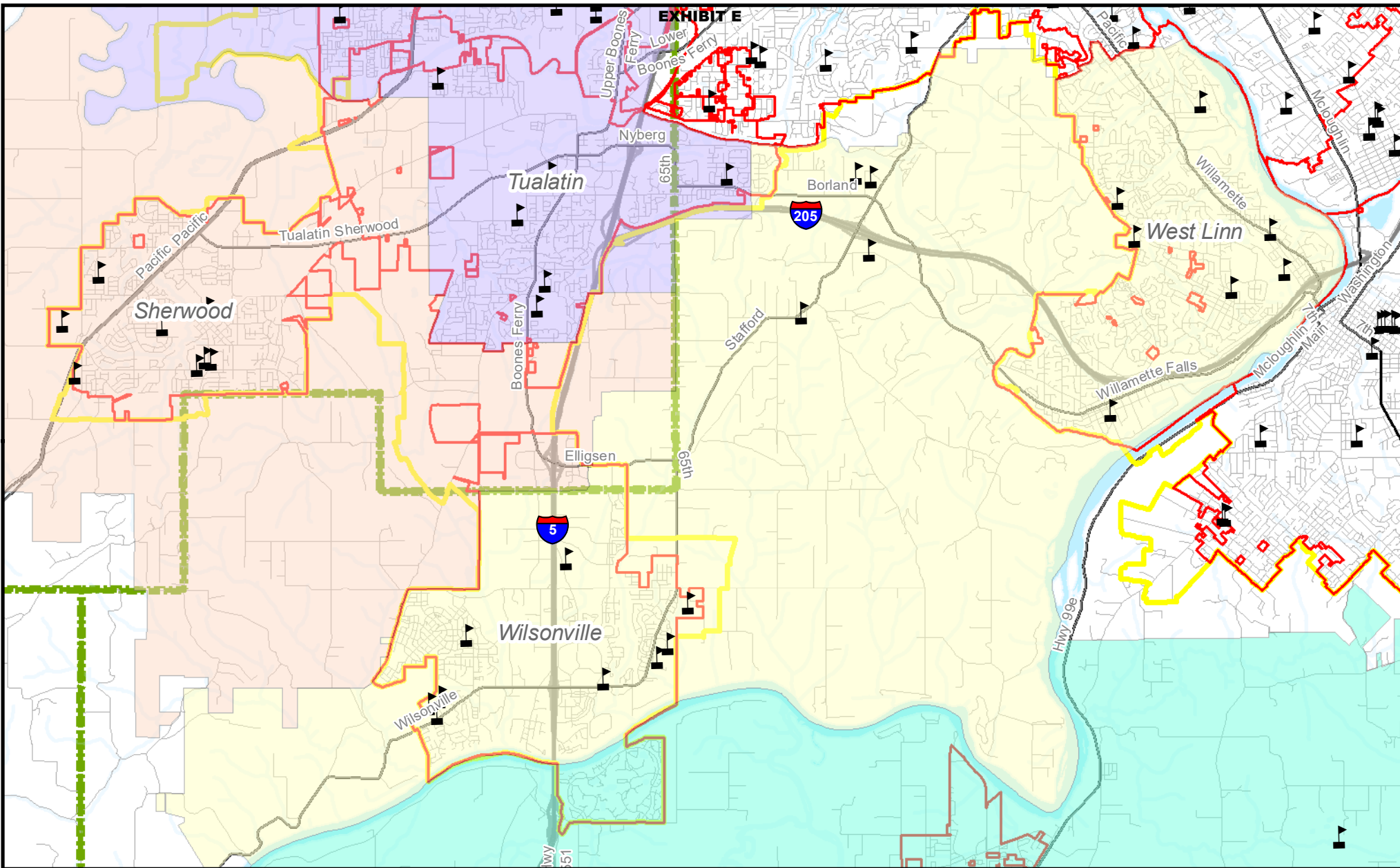


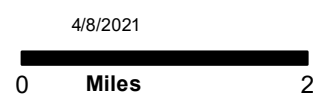
EXHIBIT E

The City of Wilsonville, Oregon
Clackamas and Washington Counties



- | | |
|-------------------------|-----------------------------|
| School Districts | School Site (Source: Metro) |
| WEST LINN-WILSONVILLE | City Limits |
| TIGARD-TUALATIN | UGB |
| SHERWOOD | County Boundary |
| CANBY | |

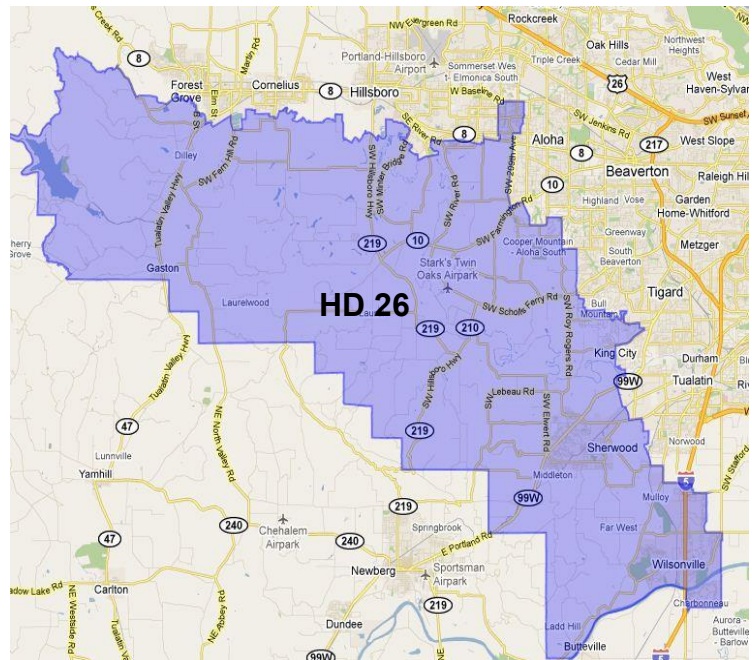
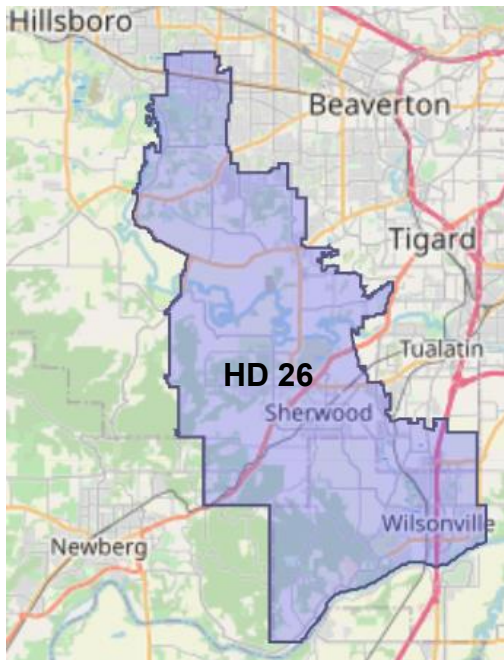
South Metro Region School Districts and Schools/Facilities



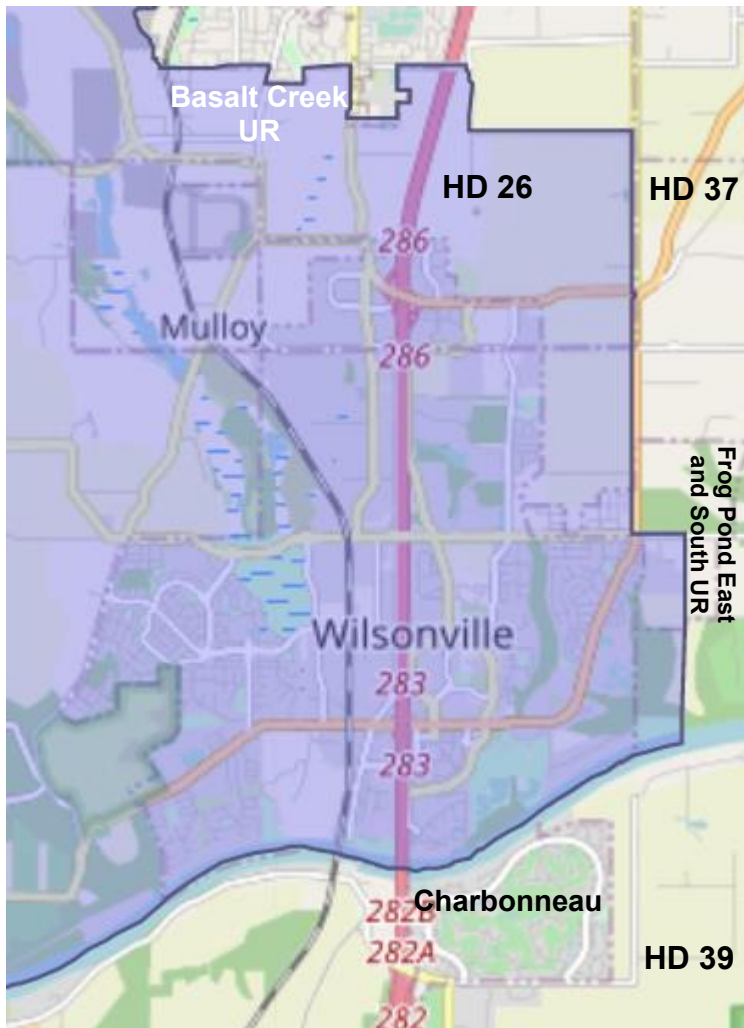
Oregon House District 26 (shown in purple shade)

Current: 2011-2021

Prior: 2001-2011



Close-up of current House District 26 near Wilsonville

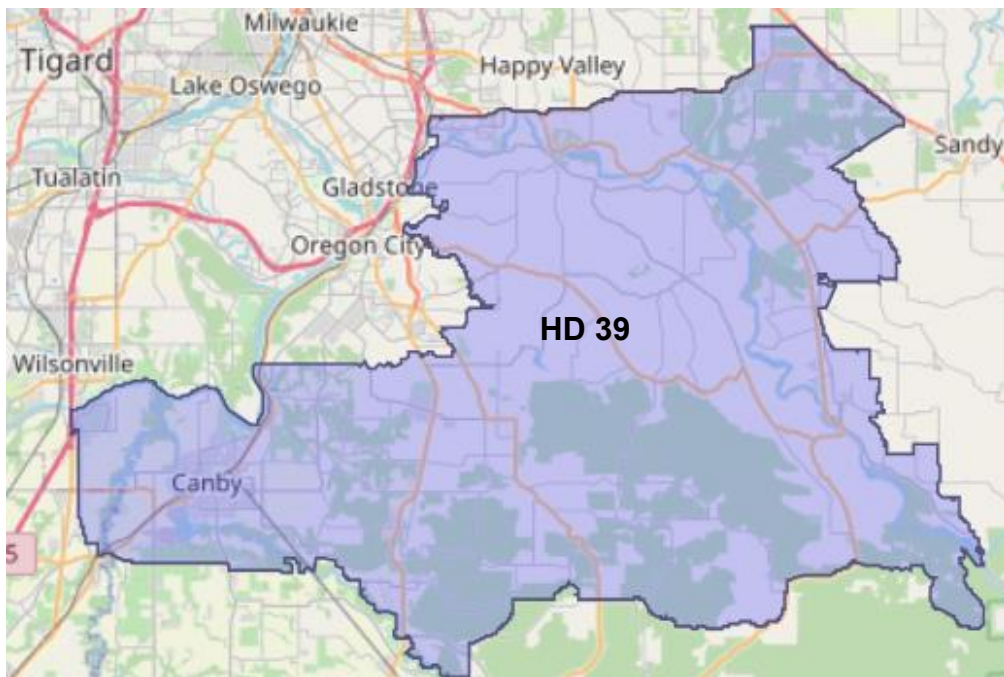


NOTES:

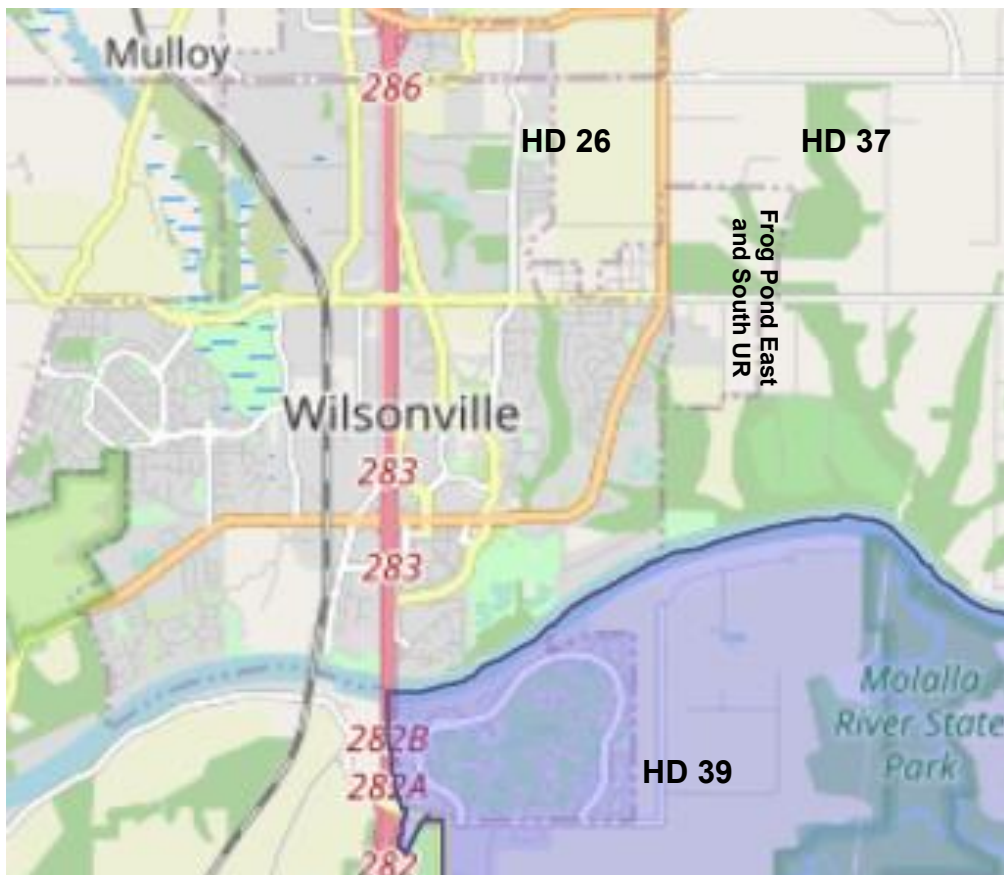
- Basalt Creek Urban Reserve (UR) is currently located in HD 26; prior to 2011 was in HD 37.
- Frog Pond East and South URs are currently located in HD 39; district boundary adjusted in 2011 to include part of Frog Pond South (Meridian Creek Middle School) in HD 26.
- Charbonneau District located in HD 39; prior to 2011 was part of HD 26.

Oregon House District 39 (shown in purple shade)

Current: 2011-2021

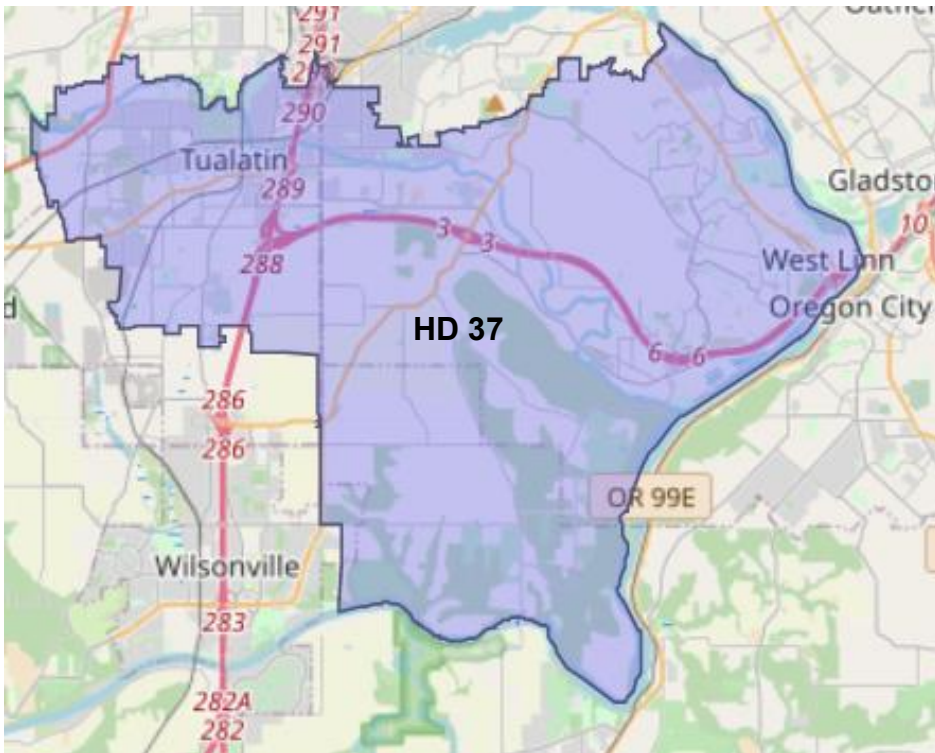


Close-up of current House District 20 near Wilsonville

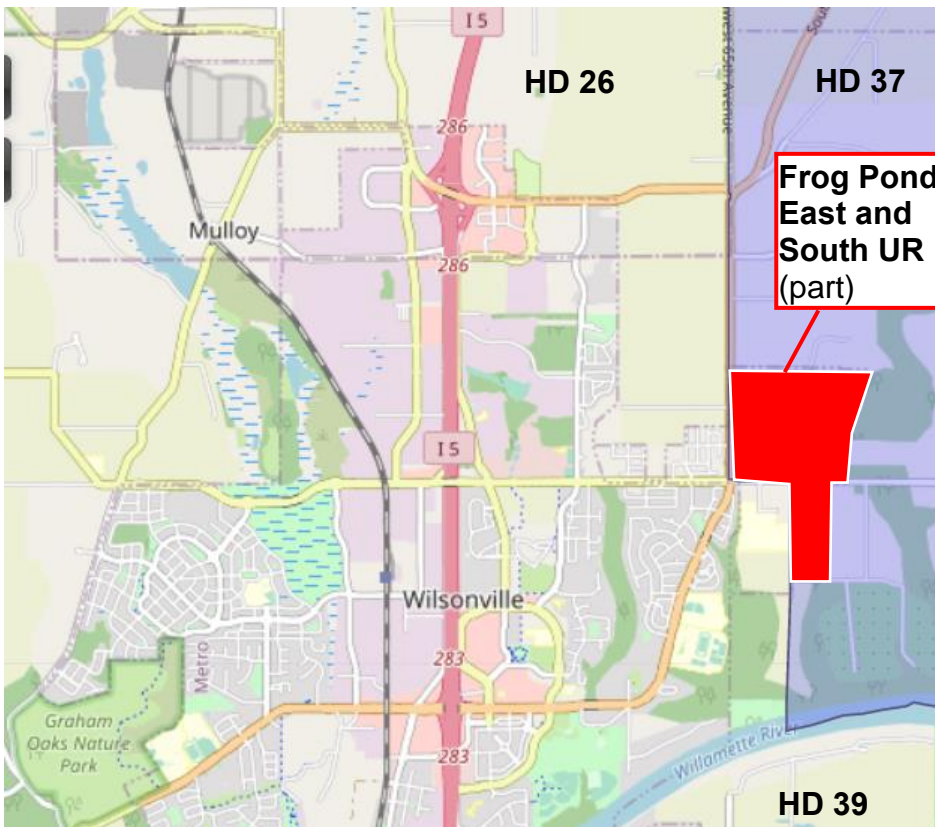


Oregon House District 37 (shown in purple shade)

Current: 2011-2021



Close-up of current HD 37 near Wilsonville



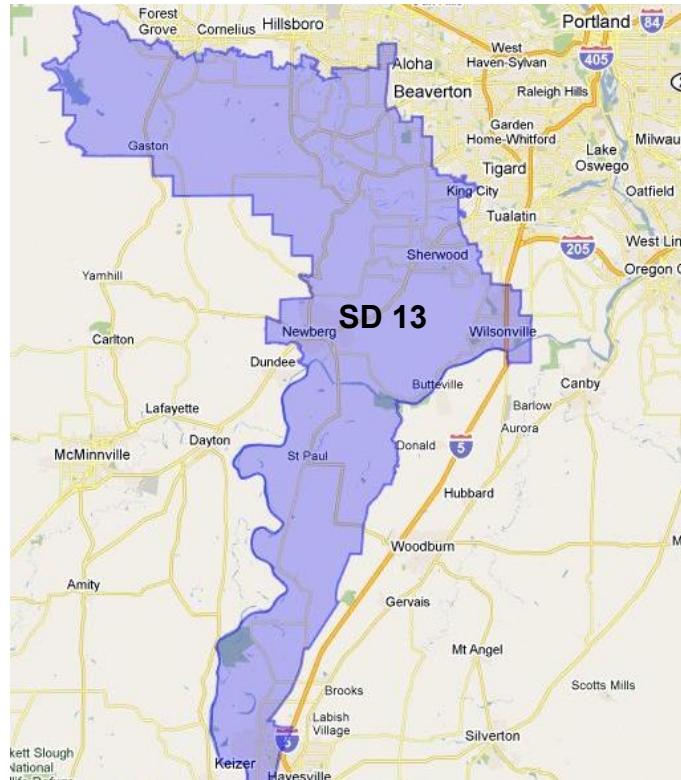
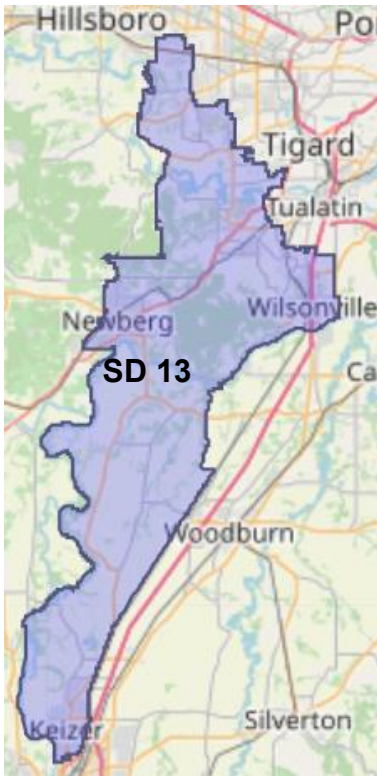
NOTES:

- Frog Pond East and part of Frog Pond South Urban Reserves (UR) in HD 39.
- A portion of Frog Pond South UR was brought into UGB and then annexed into City limits for the Meridian Creek Middle School.

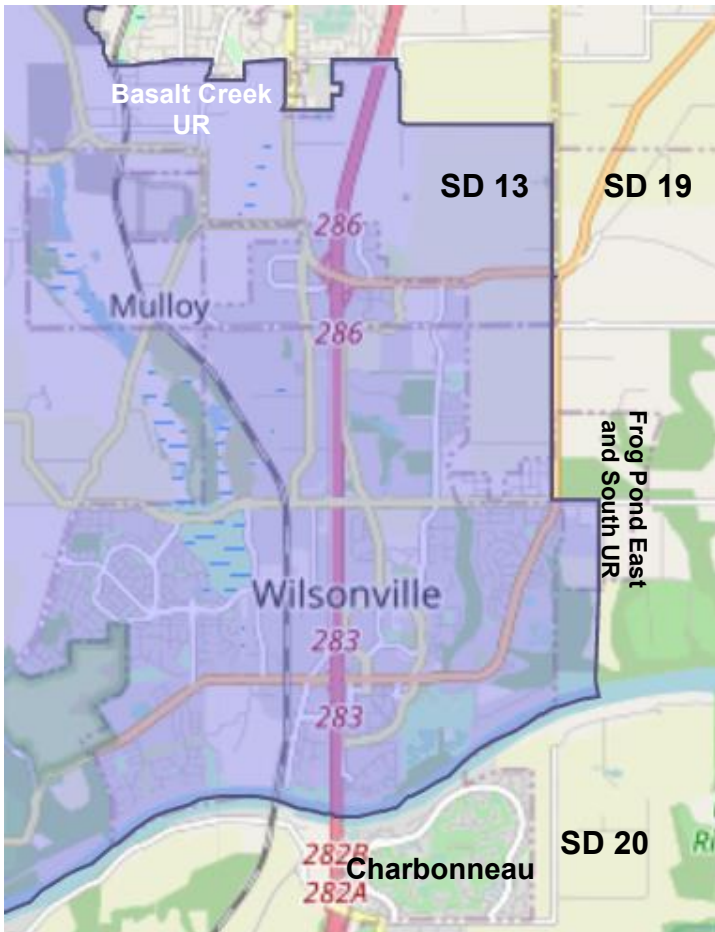
Oregon Senate District 13 (shown in purple shade)

Current: 2011-2021

Prior: 2001-2011



Close-up of current SD 13 near Wilsonville

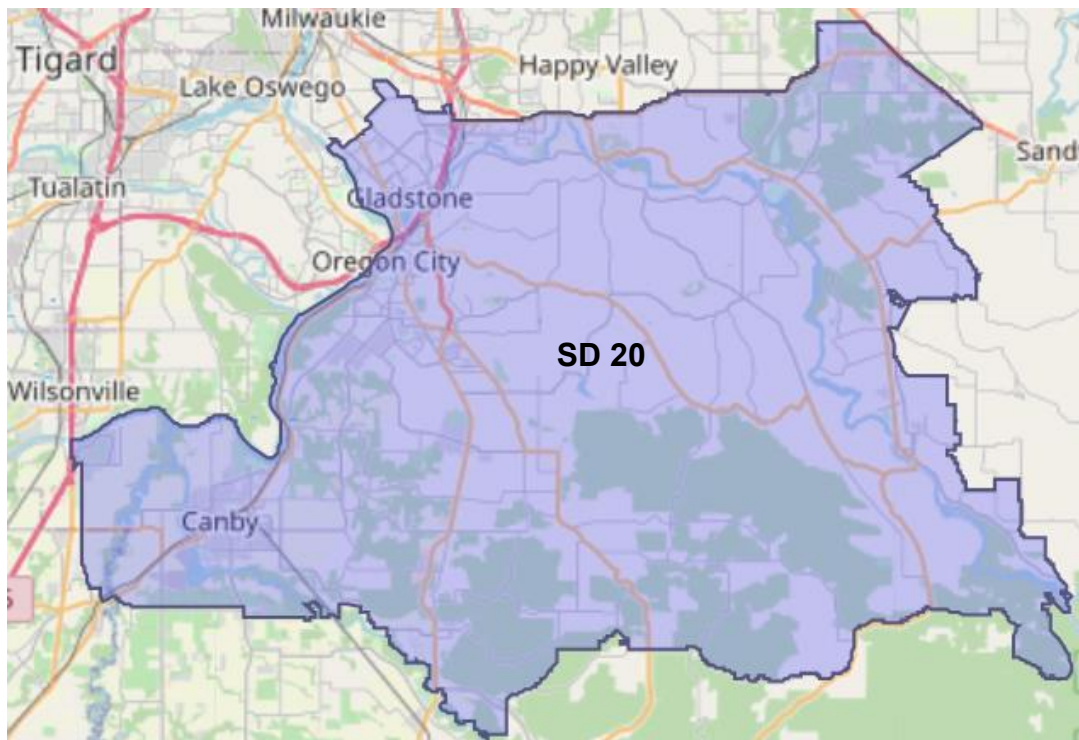


NOTES:

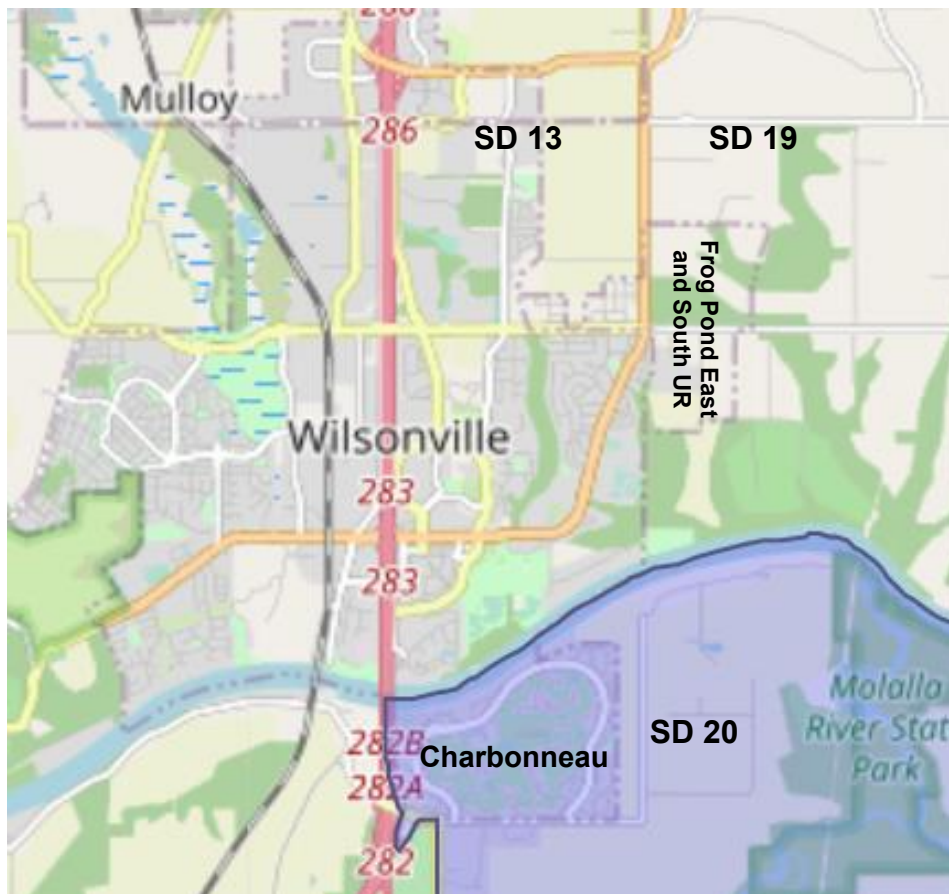
- Basalt Creek Urban Reserve (UR) is currently located in SD 13; prior to 2011 was in SD 19.
- Frog Pond East and South URs are currently located in SD 19; district boundary adjusted in 2011 to include part of Frog Pond South (Meridian Creek Middle School) in SD 19.
- Charbonneau District located in SD 20; prior to 2011 was part of SD 13.

Oregon Senate District 20 (shown in purple shade)

Current: 2011-2021



Close-up of current SD 20 near Wilsonville

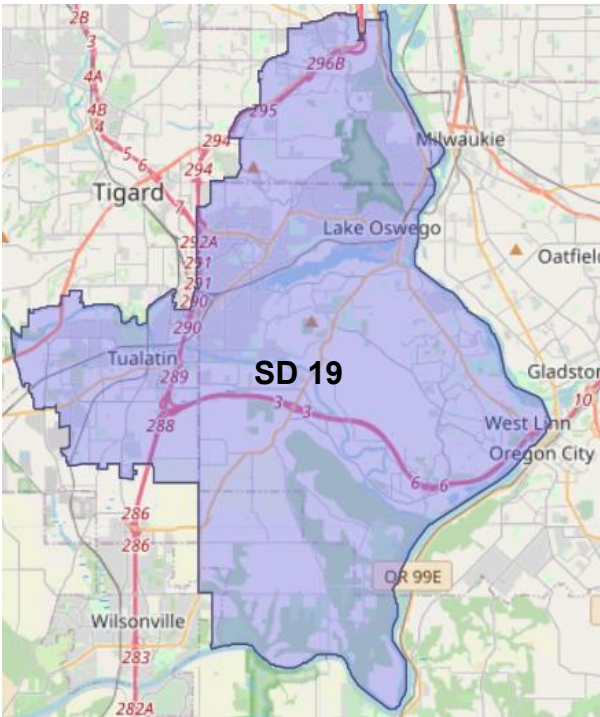


NOTES:

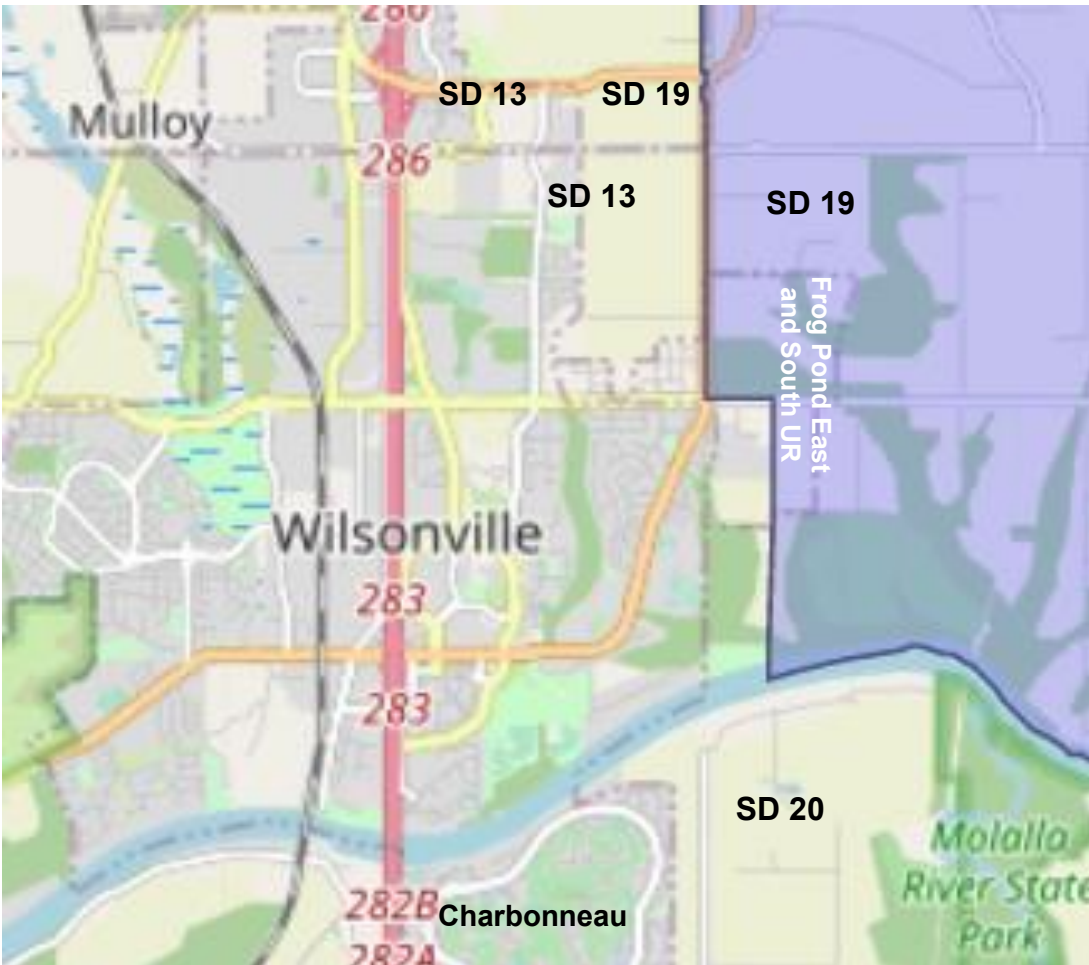
- Charbonneau District located in SD 20; prior to 2011 was part of SD 13.

Oregon Senate District 19 (shown in purple shade)

Current: 2011-2021



Close-up of current SD 19 near Wilsonville



NOTES:

- Frog Pond East and South URs are currently located in SD 19; district boundary adjusted in 2011 to include part of Frog Pond South (Meridian Creek Middle School) in SD 19.