

# Wildfire Debris & Hazard Tree Removal Update

---

Mac Lynde, Deputy Administrator, Delivery and Operations Division

Oregon Department of Transportation

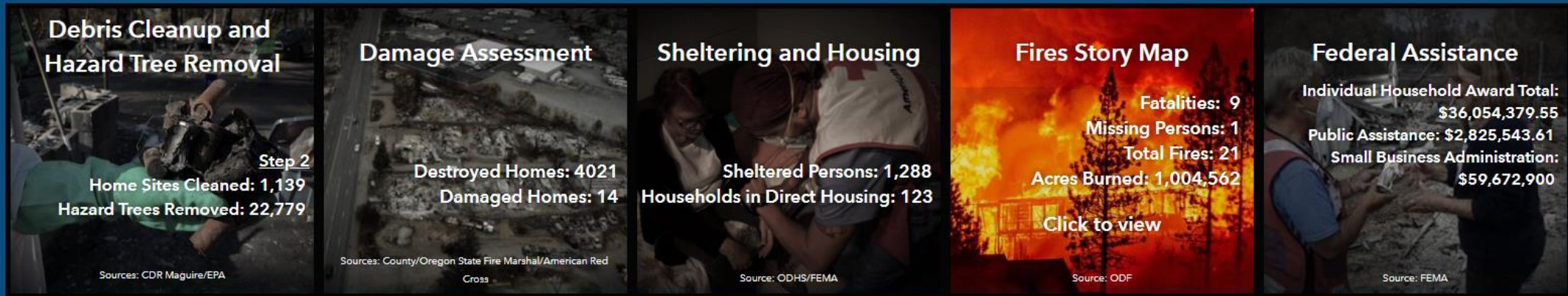
April 8, 2021

Joint Committee on Transportation

# By the Numbers

## Oregon Wildfire Response and Recovery Overview

Working directly with each jurisdiction, agency and partner involved with Oregon's response and recovery efforts, OEM has created this dashboard. We continue to integrate data systems to provide consistent and verified information to inform efforts and tell the recovery story.



- Residences destroyed: **4,026**
- Other structures destroyed: **~1,400**
- Number of home sites participating in state cleanup program: **2,824**

# Wildfire Cleanup: A 2-Step Process

## State Managed/Locally Coordinated





# STEP 1

## Clear Hazardous Waste

- Protected public health and the environment
- 75% FEMA, 25% State cost share (\$3.8M est. cost to state)
- 300,000 pounds of hazardous waste removed from 2,285 properties in two months
- County and federal partners critical to success





STEP  
2

## Remove Ash and Debris



STEP  
2

## Remove Hazard Trees





## STEP 2

# Remove Ash and Debris

- State-hired contractors are removing ash and debris
- All homes and businesses destroyed in fire eligible for cleanup
- \$367M for Ash and Debris Removal
- 75% FEMA cost share





# Mountain View Estates Talent, OR





# Almeda Drive Fire







## STEP 2

# Remove Hazard Trees

- Approx. 300,000 hazard trees along highways
- Many hazard trees removed by others
- State-hired contractors removing remaining hazard trees
- Maximizing FEMA reimbursement
- 75% FEMA, 25% State Highway Fund cost share
- \$296M Total Estimate hazard tree removal, \$74M State Highway Fund match



# OR138 – Archie Creek Fire





# OR224 – Riverside Fire

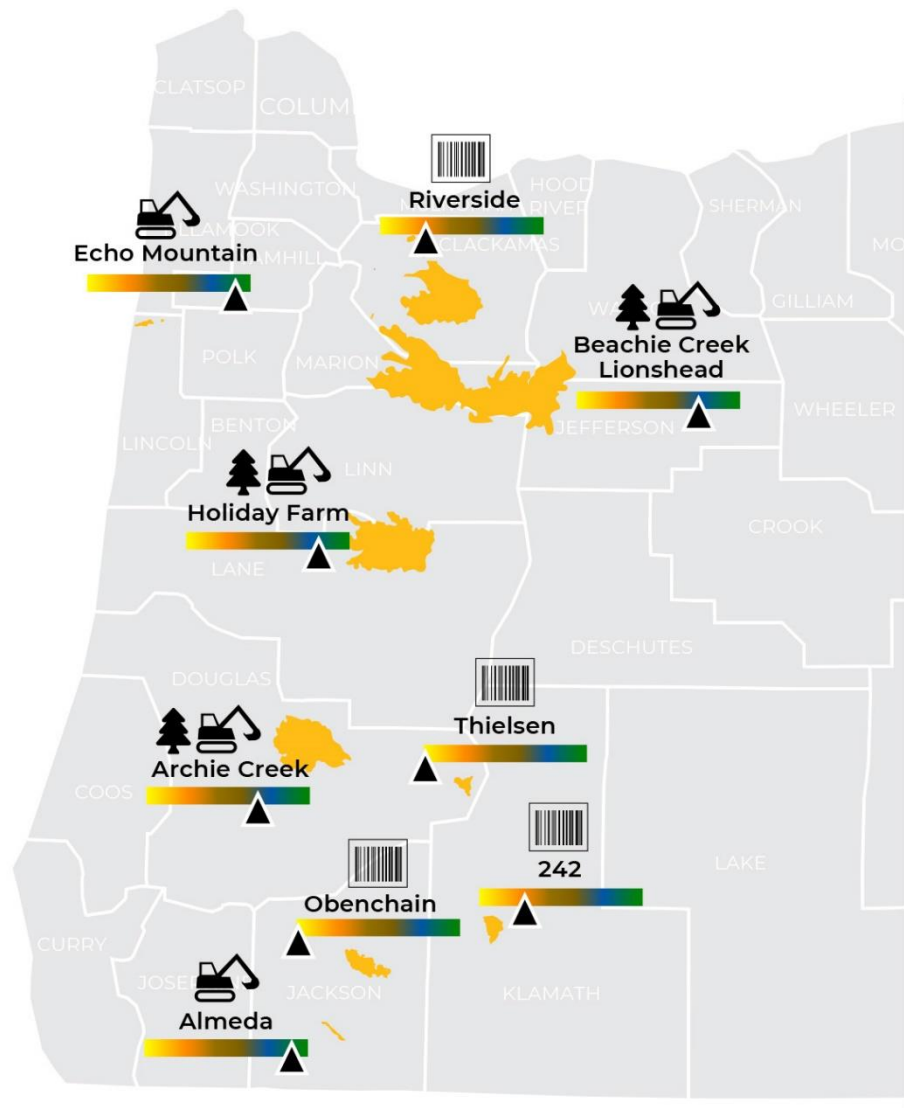




# OR 224 – Riverside Fire







**1,139 home sites cleaned** throughout Oregon

**1,443 properties and 2,824 home sites** currently participating in the Step 2 cleanup process

**63,847 trees marked** and ready to be cut

**22,779 hazard trees removed**

## BY THE NUMBERS

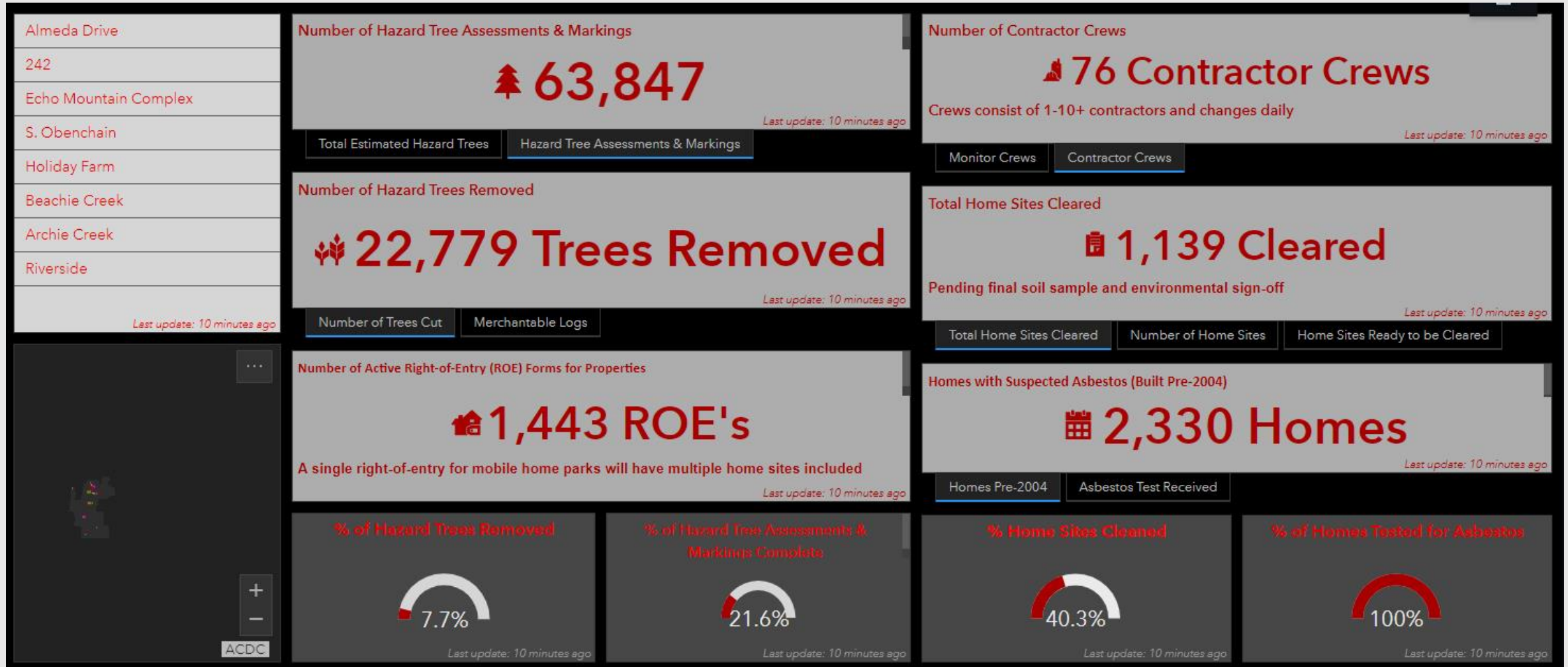
As of Tuesday 4/6/21

- **1,443 properties and 2,824 home sites** participating through complete Right of Entry forms (this number fluctuates).
- **Number of crews working continues to increase:** 76 contractor crews, 50 monitoring crews currently working.



# Data dashboard by fire and interactive status map

<https://bit.ly/3bMyqBI>



\*Data captured on Tuesday, April 6



# Estimated Costs & Funding

	Hazard Trees		Ash and Debris			
\$M	Federal as Other FEMA	State Highway Fund	Federal as Other FEMA	General Fund Match	General Fund non-FEMA Eligible	Total
FEMA	221.78		226.50			448.28
State HWY Fund		73.93				73.93
General Fund				75.50	65.30	140.80
Total	221.78	73.93	226.50	75.50	65.30	663.00
2019-21	221.78	73.93	150.00	50.00	43.75	539.45
2021-23			76.50	25.50	21.55	123.55



# Track status with us

- Webpage, interactive status map, dashboard  
[wildfire.oregon.gov/cleanup](http://wildfire.oregon.gov/cleanup)
- Debris news page  
[www.DebrisCleanupNews.com](http://www.DebrisCleanupNews.com)



[Youtube.com/OregonDOT](https://www.youtube.com/OregonDOT)



[Twitter.com/OregonOEM](https://twitter.com/OregonOEM)



[Flickr.com/oregondot](https://www.flickr.com/oregondot)



[odot.wildfire@odot.state.or.us](mailto:odot.wildfire@odot.state.or.us)



Hotline: 503-934-1700