

The background features a large, faint, circular seal of the Oregon Office of Economic Analysis. The seal contains an eagle with wings spread, perched on a globe. The text "OFFICE OF ECONOMIC ANALYSIS" is written around the top inner edge, "OREGON" is at the bottom, and "1859" is at the very bottom. The words "OF" and "THE UNION" are also visible within the seal's design.

# Oregon Office of Economic Analysis' Commonly Used Data

April 6<sup>st</sup>, 2021

Oregon Office of Economic Analysis  
Mark McMullen  
Josh Lehner

# Commonly Used Economic and Revenue Data Used by the Oregon Office of Economic Analysis

- Data Release
- Detailed information
- Detailed information available by race and ethnicity

	Monthly	Quarterly	Annually	Every 3 Years
<b>Oregon</b>	Employment (OED)	Personal Income (BEA)	American Community Survey (Census)	
	industry and county	type of income	educational attainment	
	Financial Statemnt (DOR)	Emp & Wages (OED)	employment (industry, occupation)	
	revenue type	industry and county	income & poverty	
	Housing Permits (Census)		migration	
	single vs multifamily, state & metros		home ownership	
			disability	
			health insurance	
			Population Estimates (Portland State)	
			by age and county	
		Population Estimates (Census)		
		age, sex, race		
		Tax Returns (DOR)		
		by age, income level, county		
<b>US</b>	Employment (BLS)	GDP (BEA)		Survey of Consumer Finance (Federal Reserve)
	industry and state	subcomponents		type/size of assets and debt, wealth
	White, Black, Asian total employment			by race and ethnicity
	Personal Income & Spending (BEA)			
	by type/category			

BLS = U.S. Bureau of Labor Statistics  
 BEA = U.S. Bureau of Economic Analysis

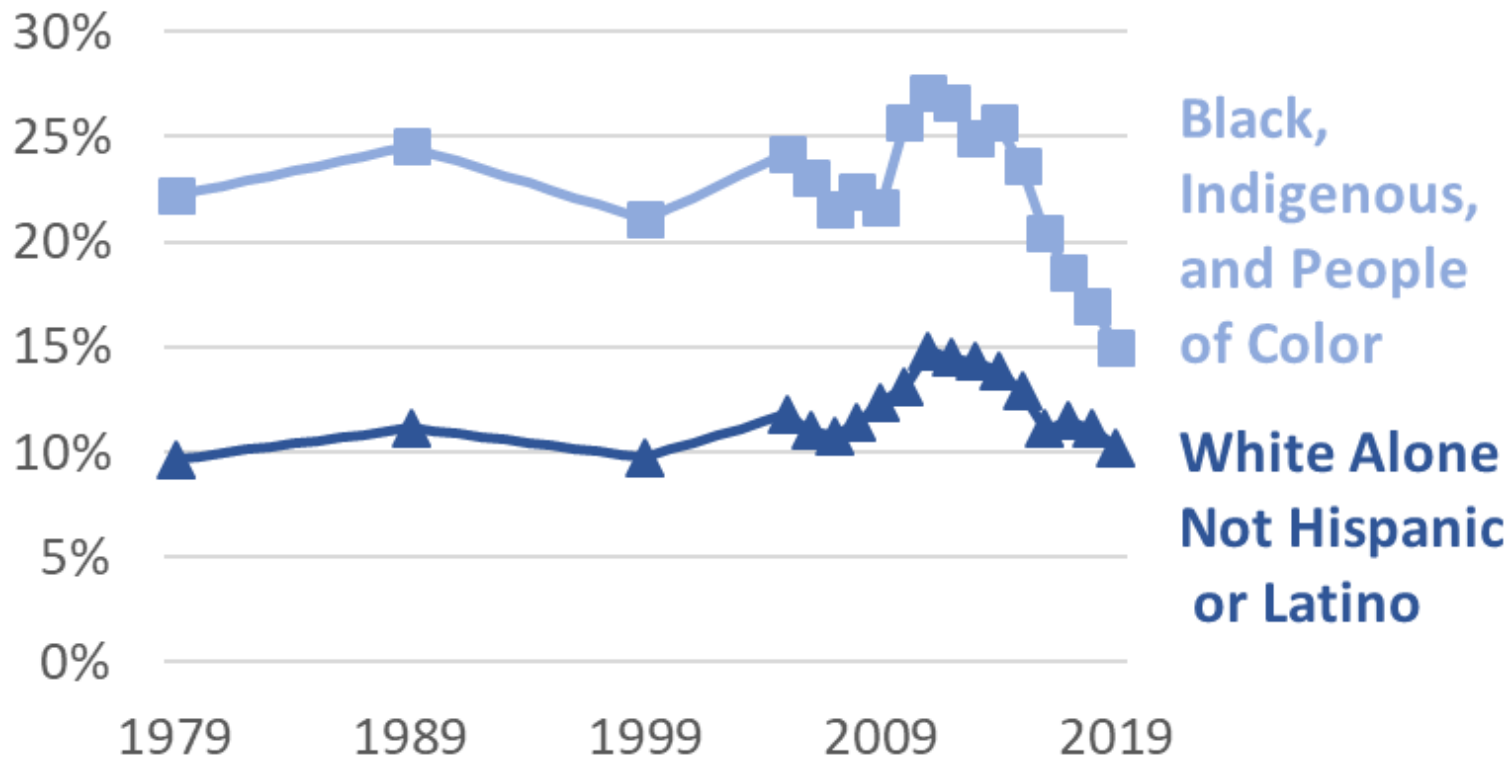
OED = Oregon Employment Department  
 DOR = Oregon Department of Revenue





# American Community Survey Data

## Oregon's Racial Poverty Gap Remains Large, But is Narrowing



Source: Census, IPUMS-USA, Oregon Office of Economic Analysis

- The annual ACS data is the best source of all state and local information by race and ethnicity
- Also the single best source of any income information
- Data collected over 12 months
- Annual tables publishes in September of the following year
  - E.g. 2020 data will be released Sept 2021
- Microdata, which is needed to answer more detailed questions is released in December
  - E.g. How many prime working-age Oregonians were incarcerated? In what occupations do Asian Oregonians work from home the most?

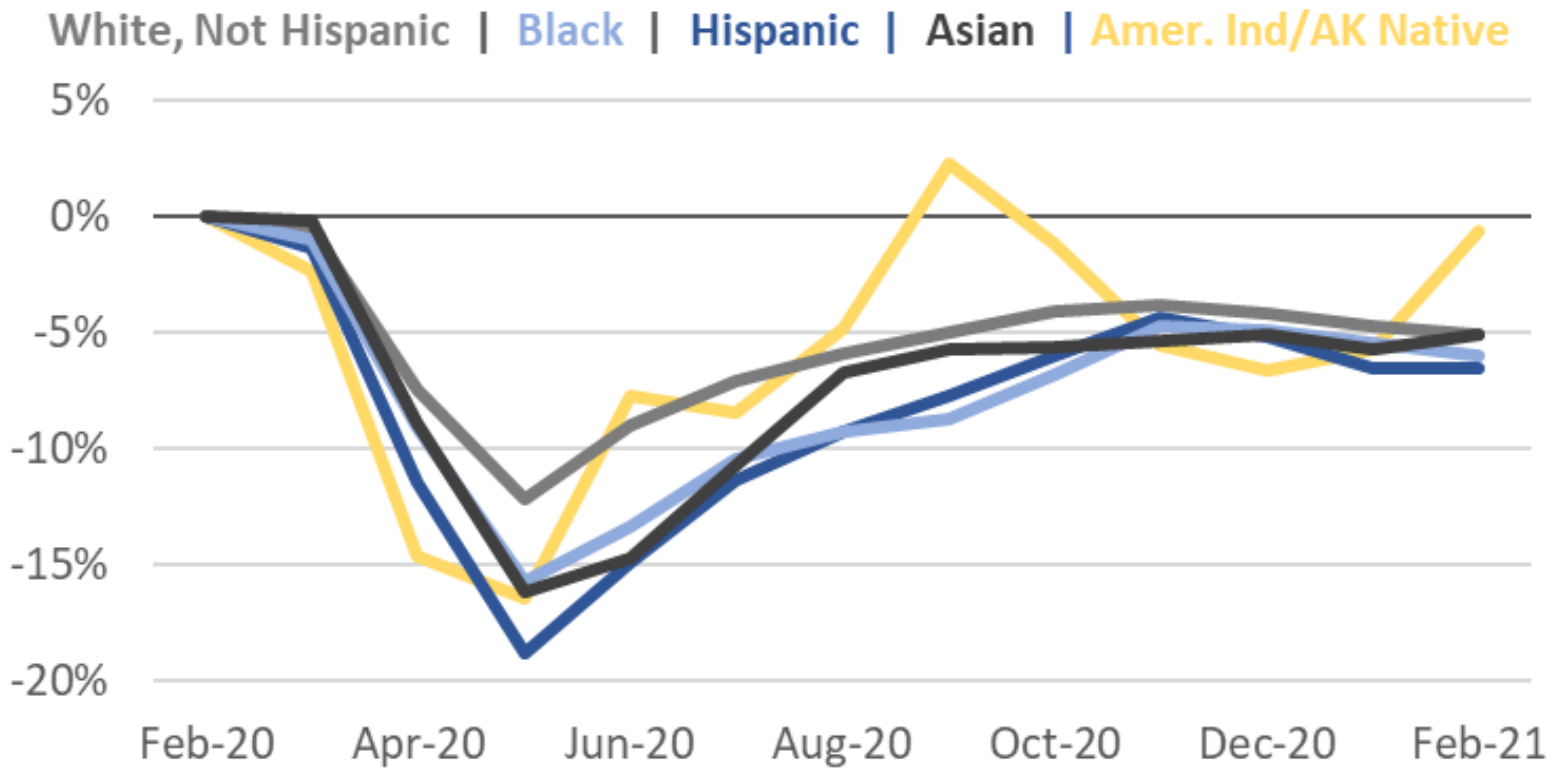




# Monthly Employment: U.S.

## COVID and U.S. Employment

Percent Change from February 2020



- BLS publishes monthly estimates for Asian, Black, and White Americans
- To calculate more detailed information one must use PUMS (public use microdata sample)

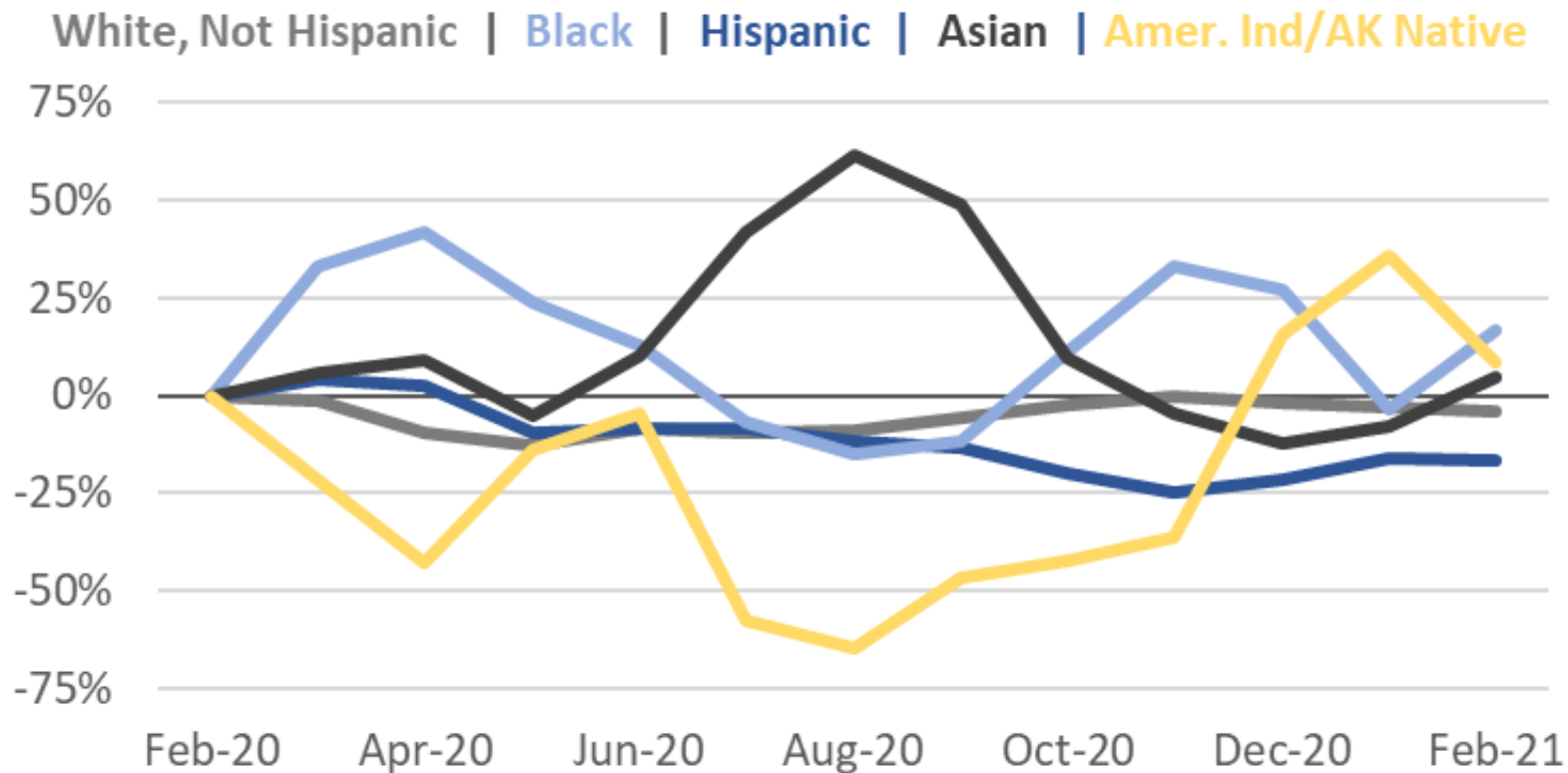




# Monthly Employment: Oregon

## COVID and Oregon Employment

Percent Change from February 2020



Data: 2 Month Average | Latest Data: Feb '21 | Source: IPUMS-CPS, Oregon Office of Economic Analysis

- BLS publishes no monthly estimates by race and ethnicity for states or metros
- To calculate this information one must use PUMS (public use microdata sample)
- Local sample sizes are tiny, leading to very volatile data





# Contact



mark.mcmullen@oregon.gov  
(503) 378-3455



joshua.lehner@oregon.gov  
(971) 209-5929



[www.OregonEconomicAnalysis.com](http://www.OregonEconomicAnalysis.com)



[@OR\\_EconAnalysis](https://twitter.com/OR_EconAnalysis)

