



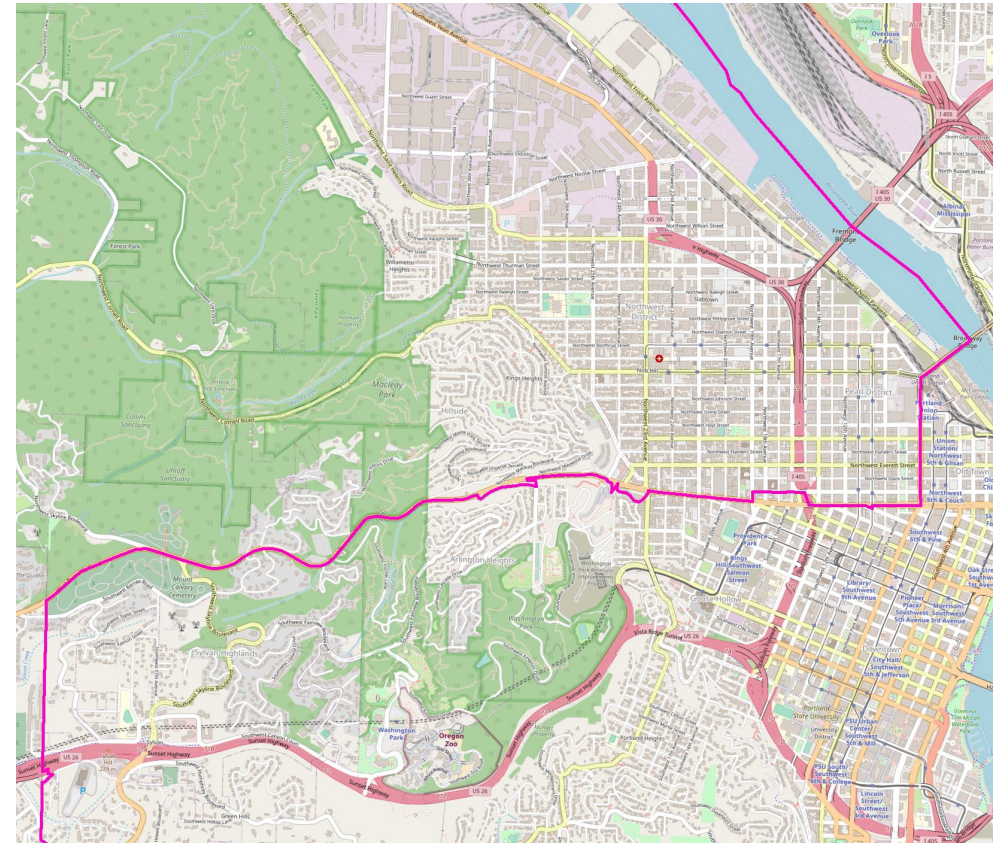
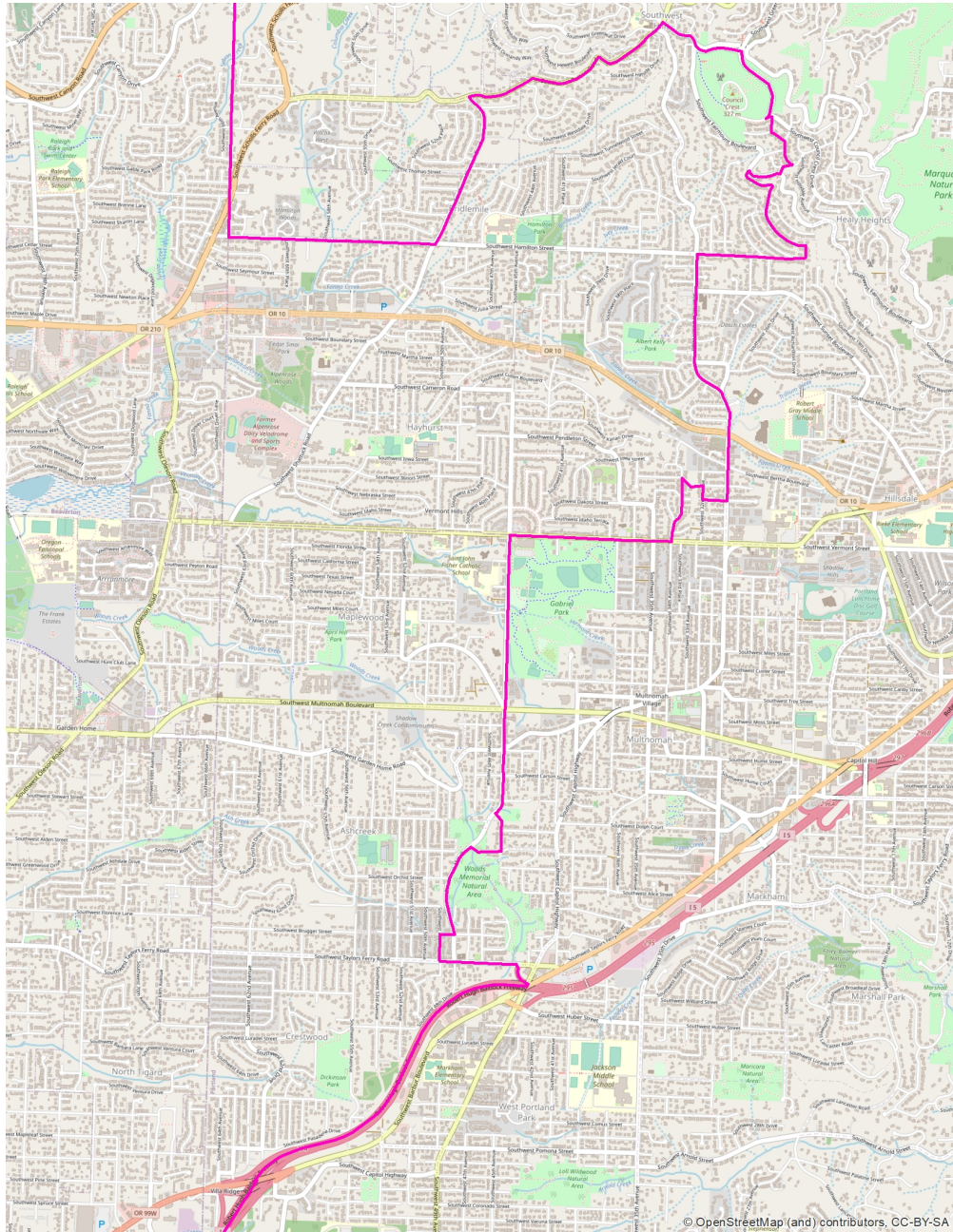
# **Geography of Oregon's Congressional Districts**

**March 31, 2021**

**For the Oregon Senate Committee on  
Redistricting**

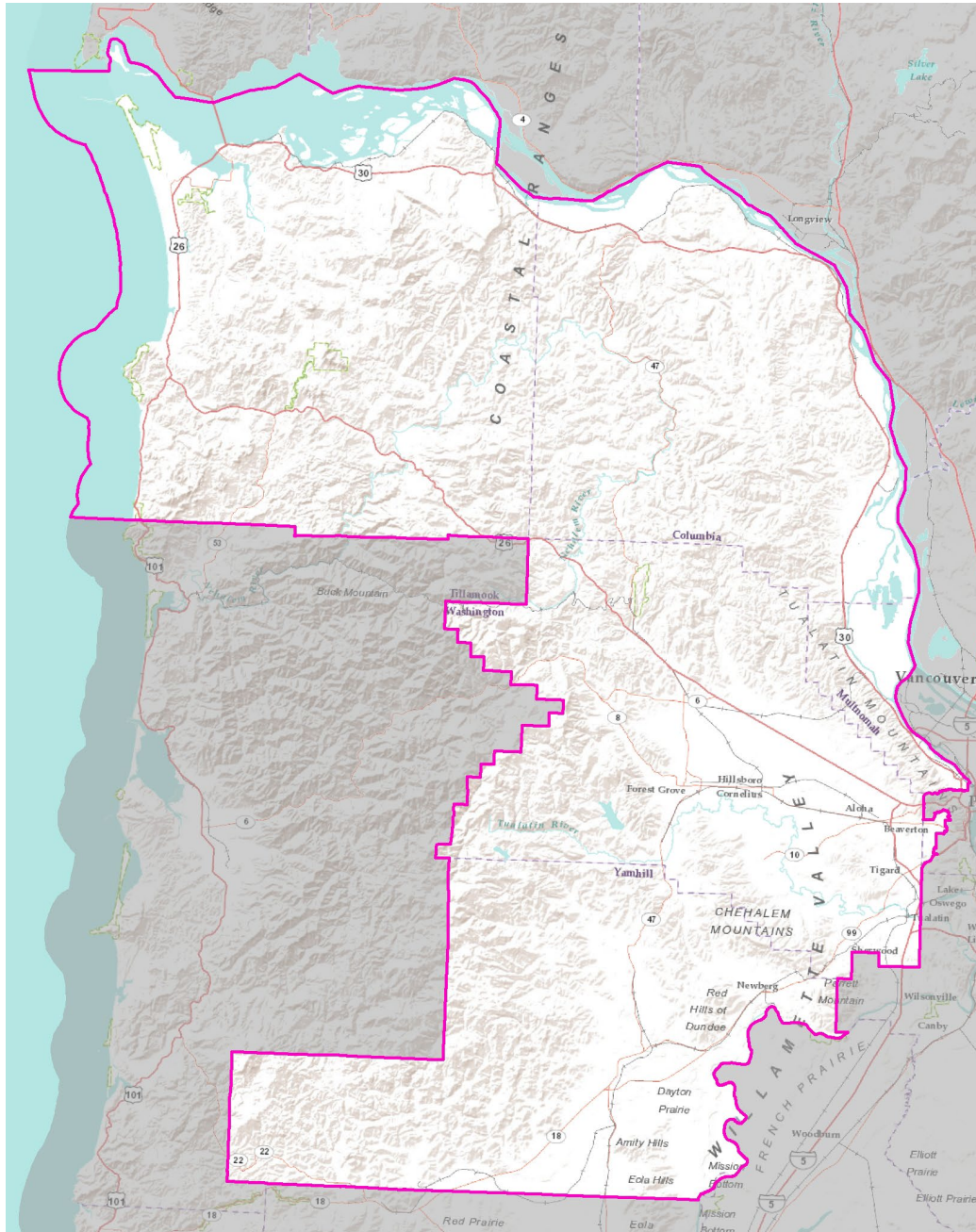


# CURRENT CONGRESSIONAL DISTRICT 1



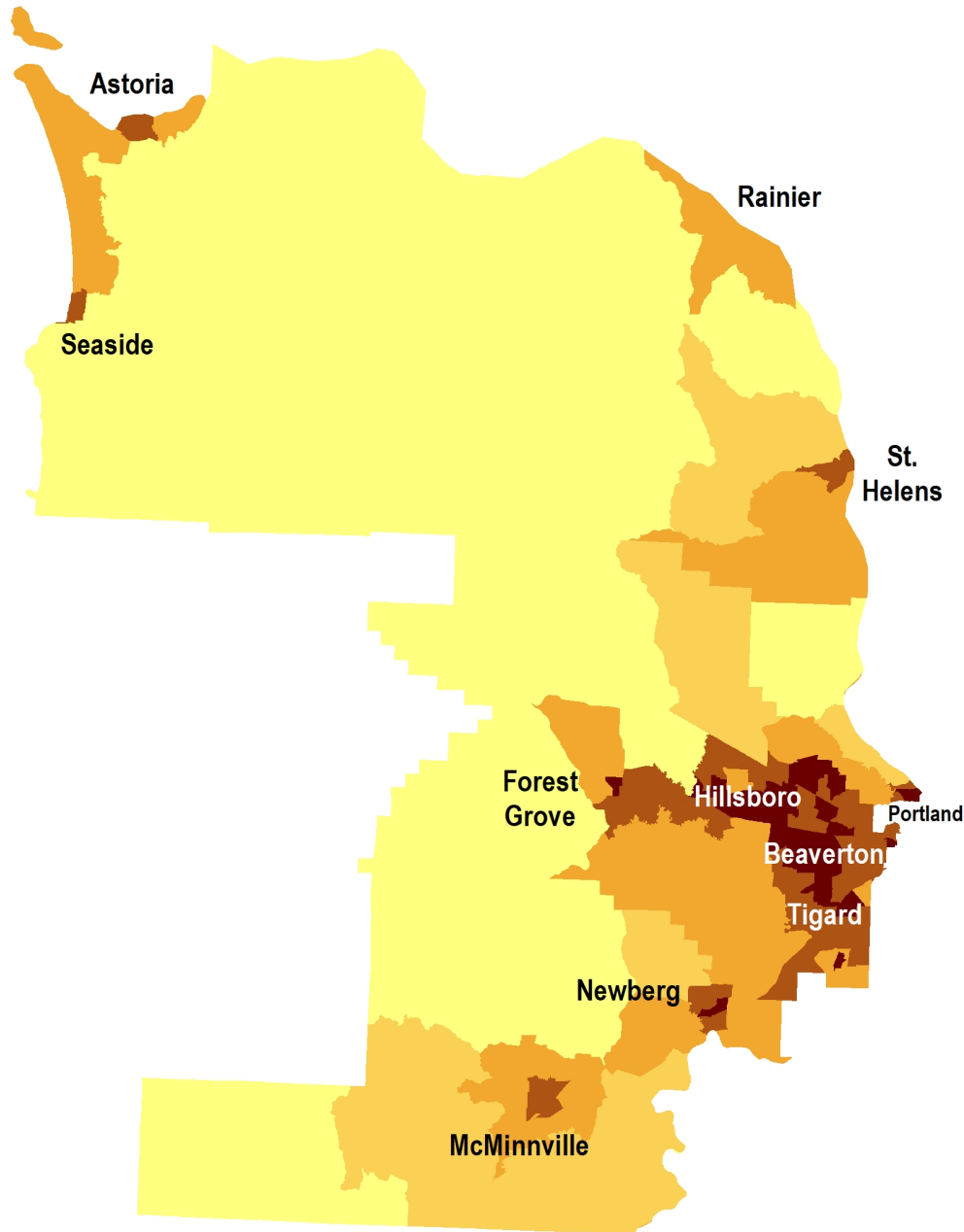
- Multnomah County splits roughly along:
  - Broadway and Burnside
  - Hamilton, SW 45<sup>th</sup>, and Interstate 5

# CURRENT CONGRESSIONAL DISTRICT 1



- Coast Range and mountainous terrain through most of the district
- Forest Park and West Hills in Portland area
- Northern portion of the Willamette Valley in Yamhill County; Tualatin Valley mostly contained within Washington County
- Largely “green” and heavily forested in the hills with agriculture in valleys
- Pacific Ocean, Columbia River, Sauvie Island, Henry Hagg Lake

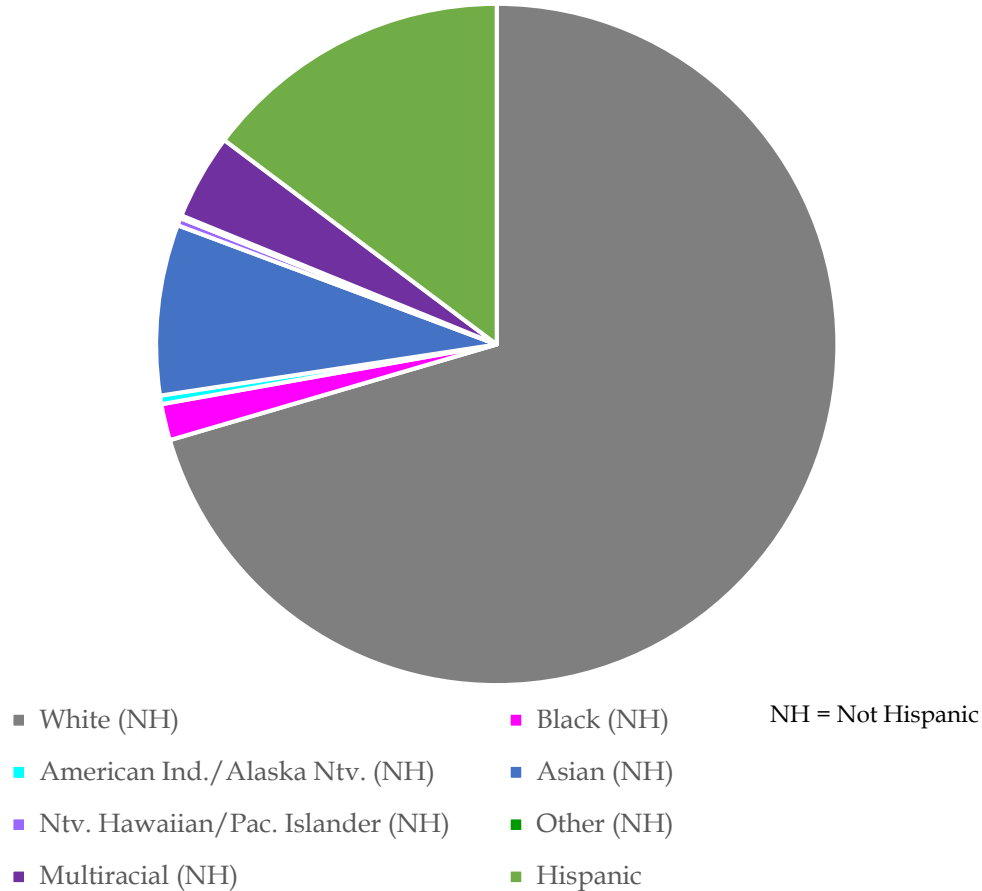
# CURRENT CONGRESSIONAL DISTRICT 1



- Current ACS population estimate: 842,952
  - 16,991 above average district population
  - District had 766,216 as of Census 2010
- Population density of 267 people per square mile
- Population centers include portions of Portland, suburbs west of Portland, McMinnville, Newberg, St. Helens, and the northwest coast

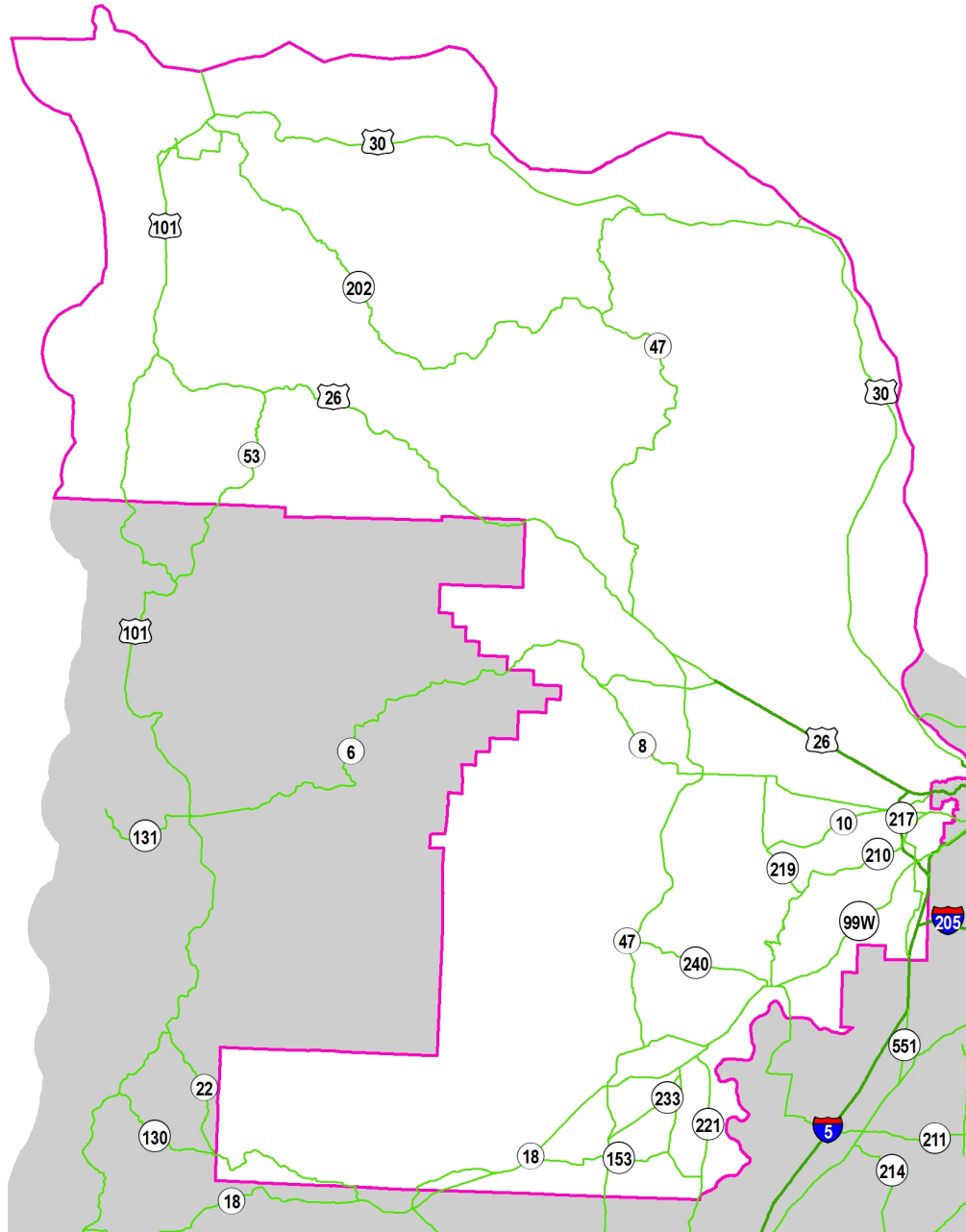
# CURRENT CONGRESSIONAL DISTRICT 1

District 1: Race/Ethnicity (2019 ACS)



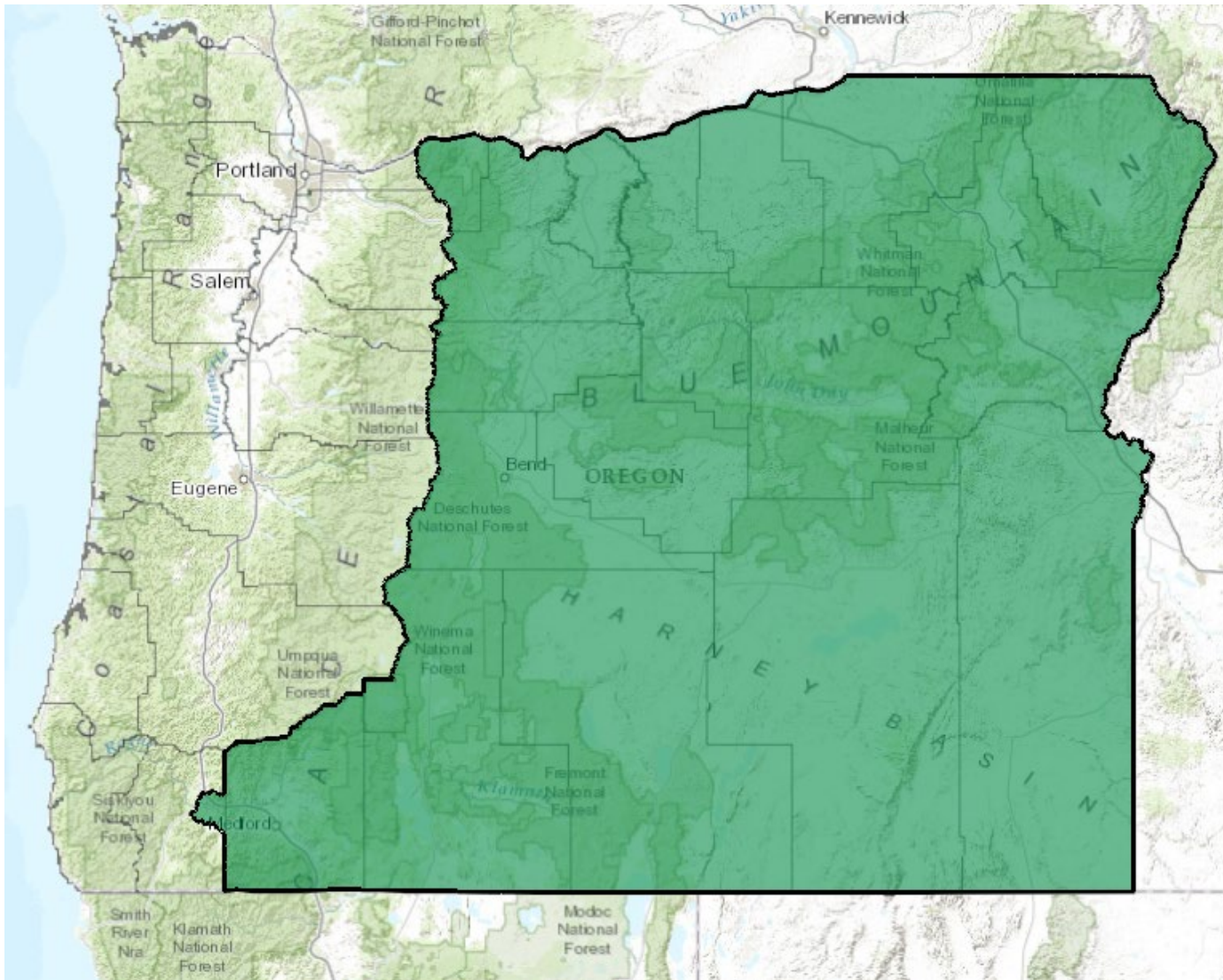
- People of color comprise 29.5% of District 1
- Hispanics make up over half of the population in parts of Hillsboro and over a quarter in parts of Beaverton, Cornelius, McMinnville, and Tualatin
- Asians make up over a quarter of the population in parts of Hillsboro and over 40% in Bethany and northwestern Beaverton
- Grand Ronde in Yamhill County panhandle
- People of color as a whole most clustered in Portland Metro and the Highway 99W corridor towards McMinnville

# CURRENT CONGRESSIONAL DISTRICT 1



- Highways 26, 30, 99W, and 101 are major transportation corridors
- Larger public transportation providers include TriMet in Portland Metro, Yamhill County Transit
- Largest industries by employment:
  - Education, health care, social assistance
  - Manufacturing
  - Professional, scientific, and management
- High concentration of wineries in Yamhill County
- No public 4-year colleges

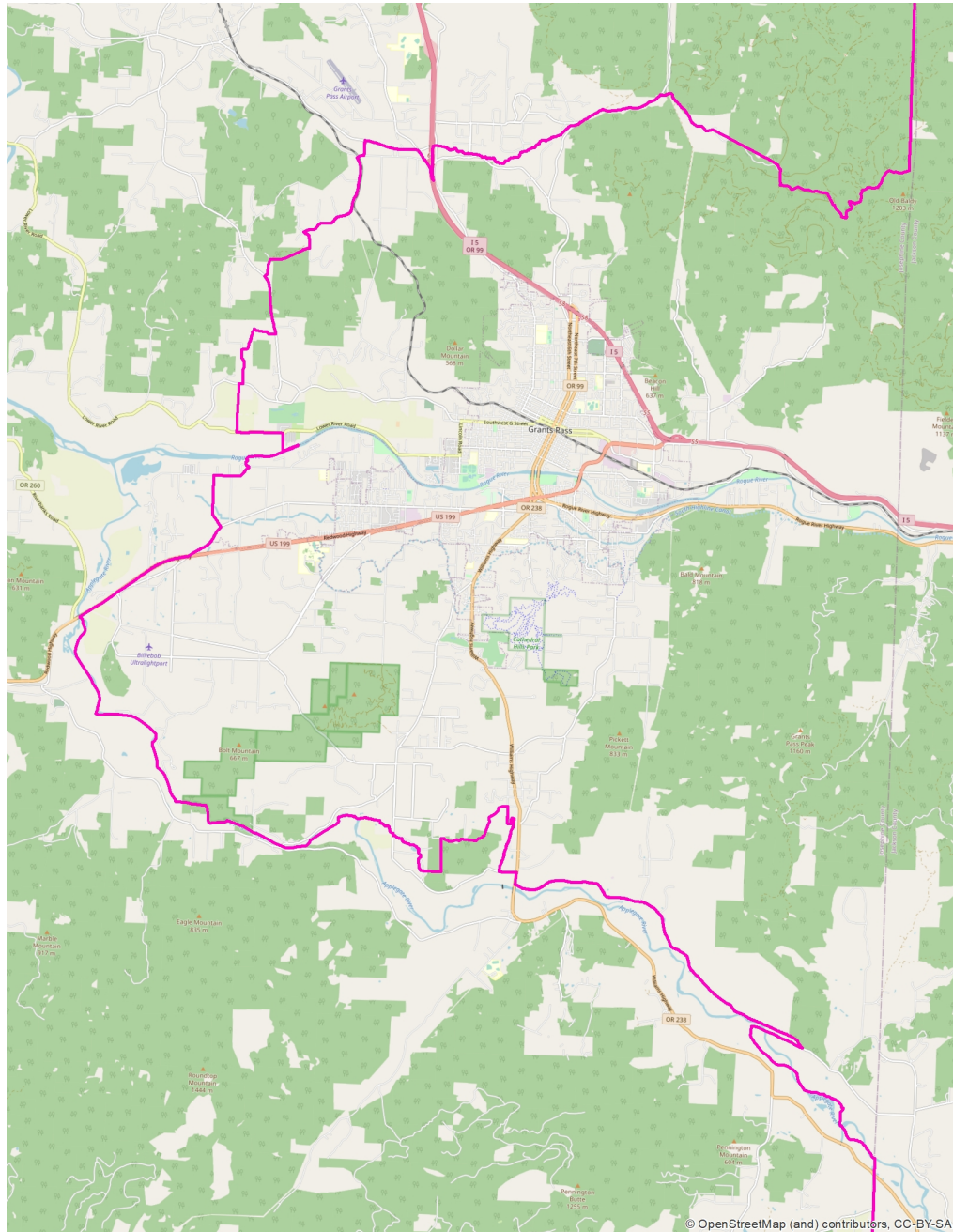
# CURRENT CONGRESSIONAL DISTRICT 2



- Includes all of Baker, Crook, Deschutes, Gilliam, Grant, Harney, Hood River, Jackson, Jefferson, Klamath, Lake, Malheur, Morrow, Sherman, Umatilla, Union, Wallowa, Wasco, and Wheeler Counties
- Also includes the city of Grants Pass in Josephine County
- Oregon state line bounds much of the district, with roads and water features bounding the Grants Pass area

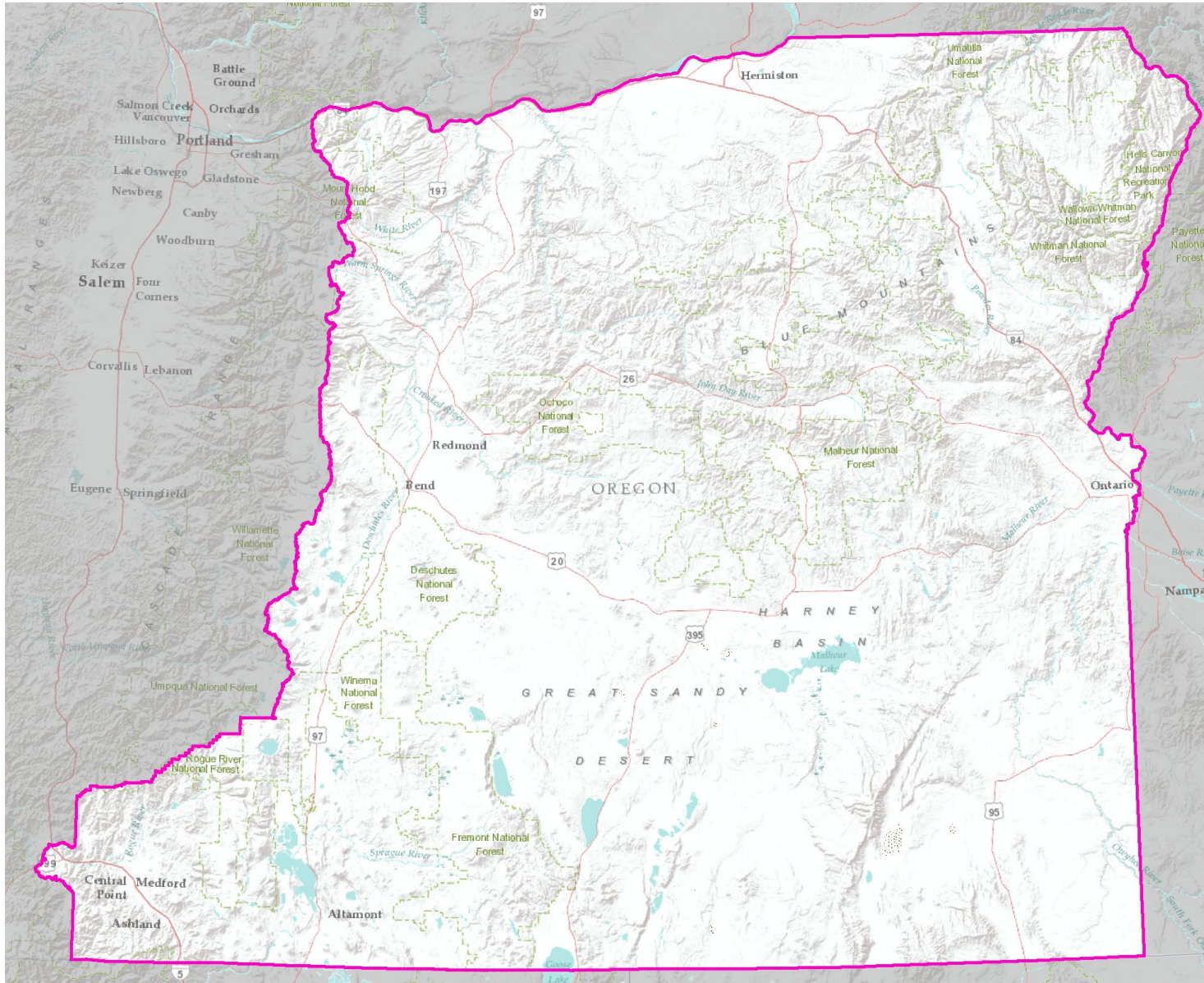


# CURRENT CONGRESSIONAL DISTRICT 2



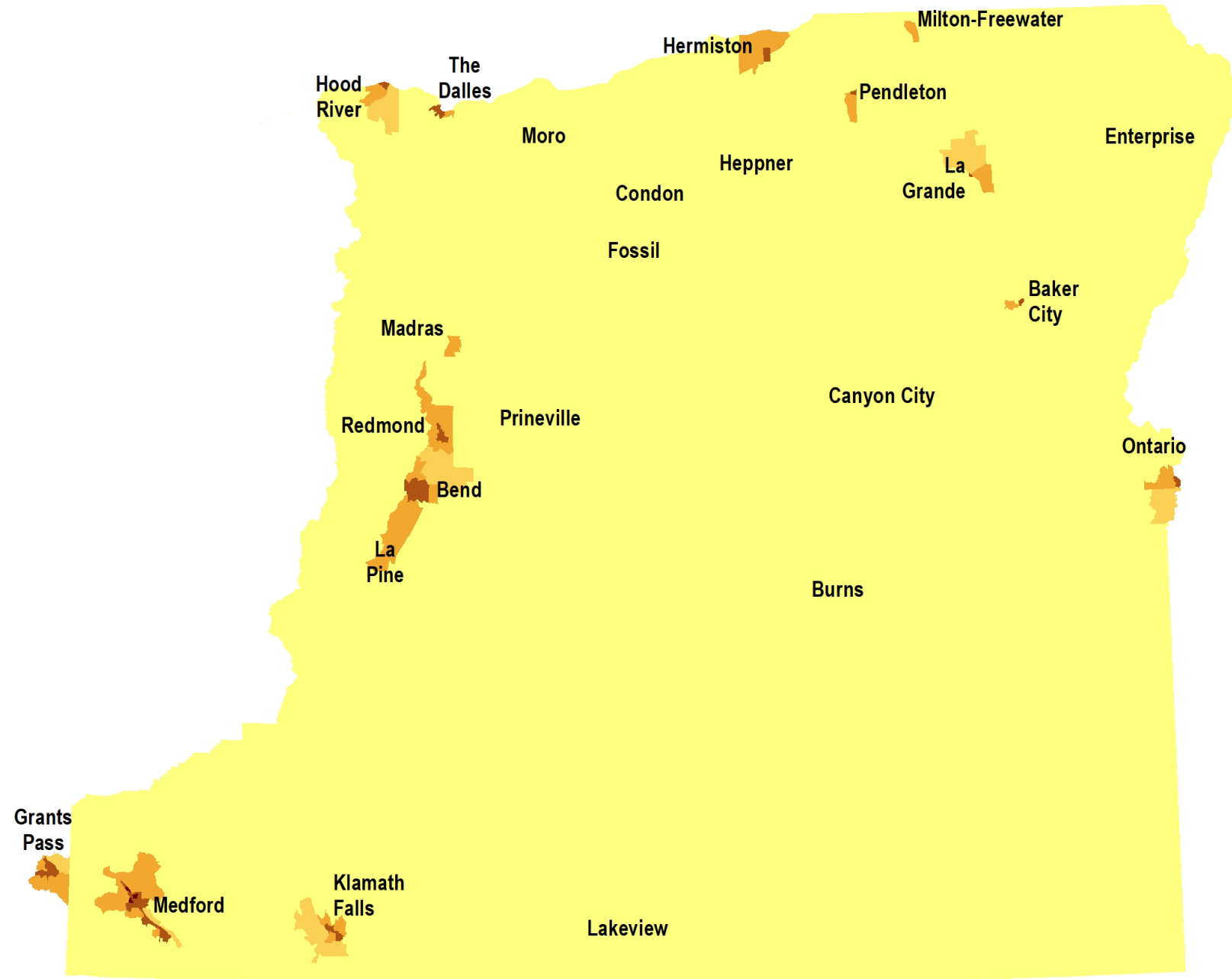
- Some lines in Josephine County follow:
  - Louse Creek, Applegate River
  - Monument Drive, Granite Hill Road, Old Baldy Road and other streets
  - Highway 199 and North Applegate Road

# CURRENT CONGRESSIONAL DISTRICT 2



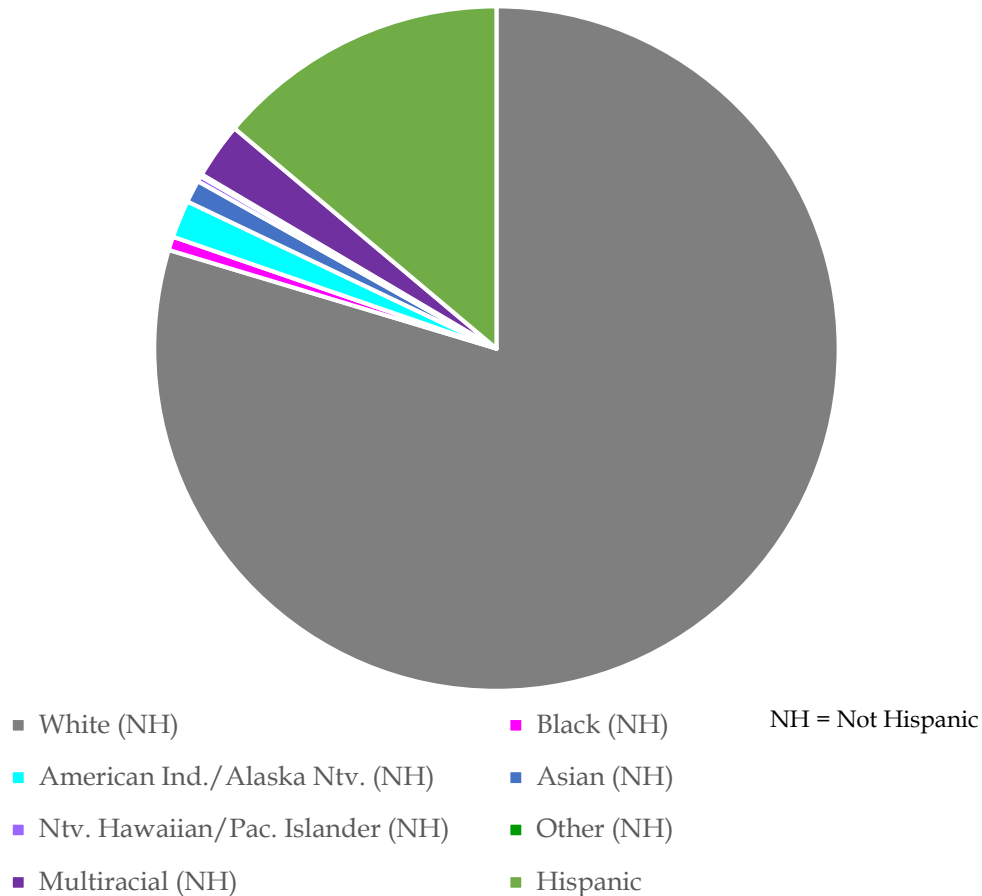
- East side of Mount Hood and the Cascade Range; Blue Mountains, Siskiyou Mountains, and Columbia Gorge
- Rogue Valley, Treasure Valley, Harney Basin
- Crater Lake, Klamath Lake, Summer Lake, Malheur Lake
- Steens Mountain Wilderness, numerous National Forests
- Agriculture and ranching
- Many unpopulated areas

# CURRENT CONGRESSIONAL DISTRICT 2



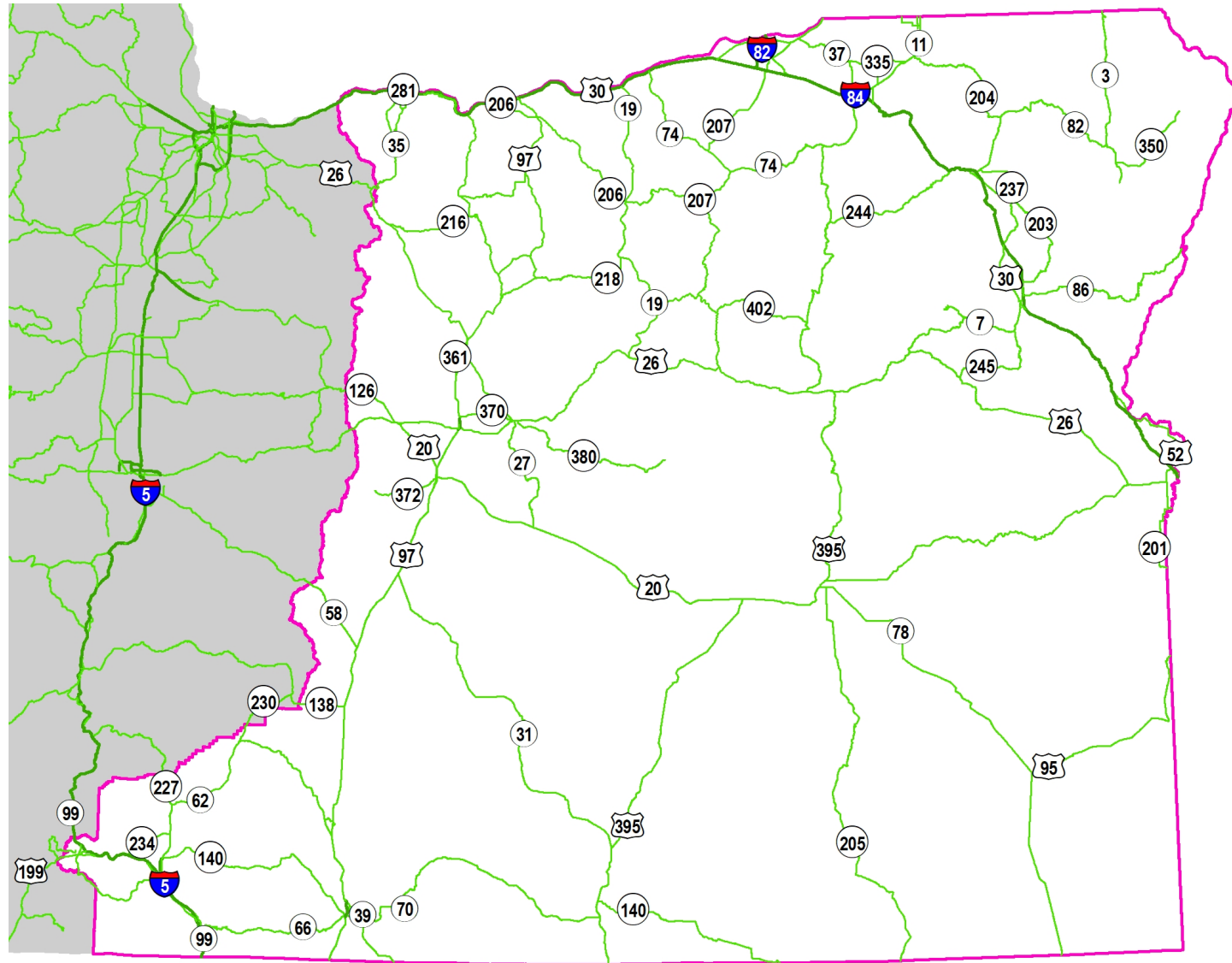
- Current population estimate: 817,793
  - 8,168 below average district population
  - District had 766,215 as of Census 2010
- Population density of 12 people per square mile
- Largest population centers include Bend, Grants Pass, and Medford, with smaller centers in Klamath Falls and along the I-84 corridor

District 2: Race/Ethnicity (2019 ACS)



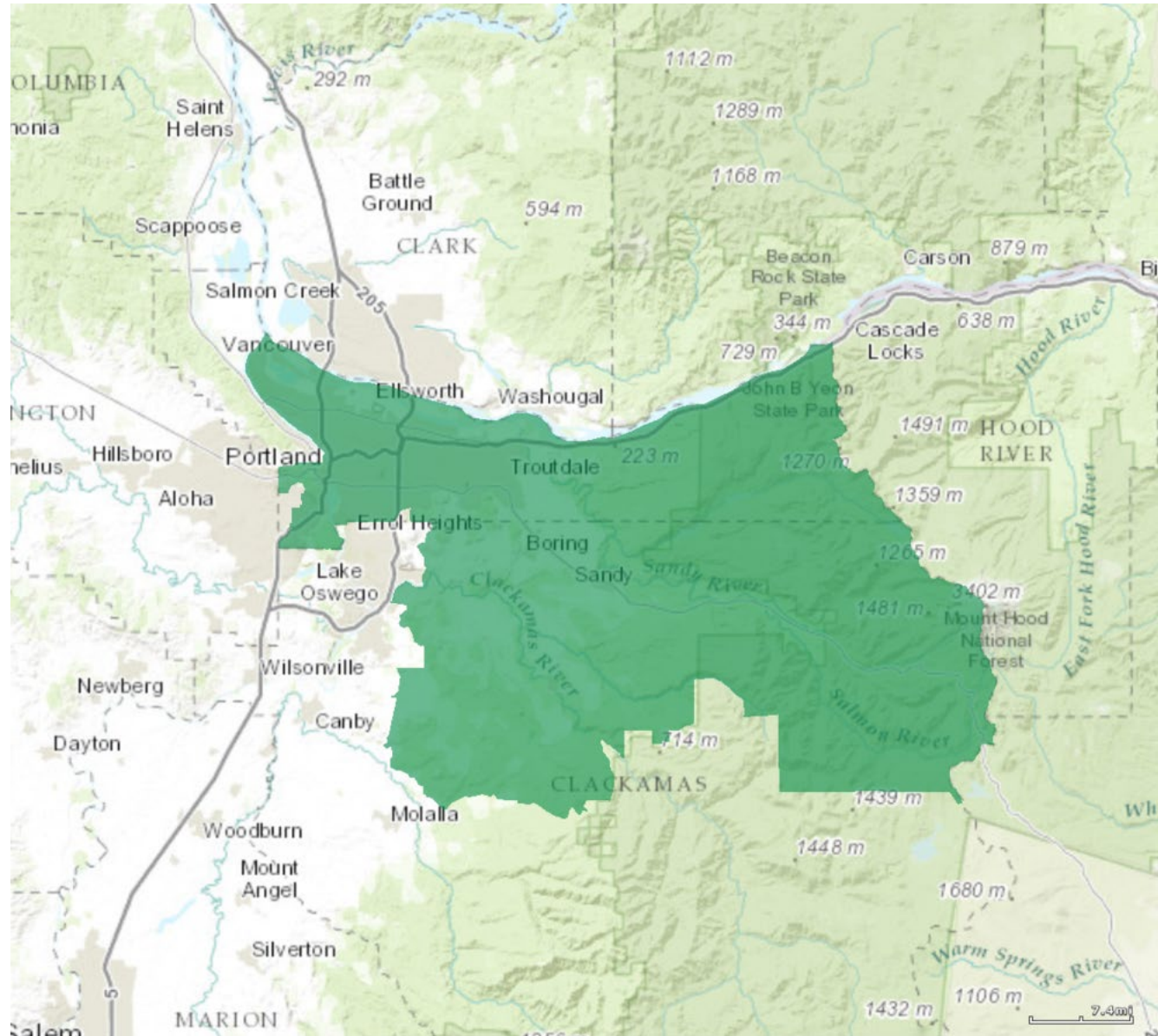
- People of color comprise 20.3% of District 2
- Clusters of Hispanic population in Hood River, northern Morrow and Umatilla Counties, southwestern Jefferson County, Malin, and Malheur County
  - Over 50% in parts of Hood River County, Milton-Freewater, Nyssa, and Ontario
- Warm Springs and area east of Pendleton have large Native American populations
- Small grouping of Pacific Islanders east of La Grande

# CURRENT CONGRESSIONAL DISTRICT 2



- Highways 26, 84, 97, and 395 are major transportation corridors
- Larger public transportation providers include Rogue Valley Transportation District, Central Oregon Intergovernmental Council, Josephine County Transportation, Milton-Freewater and Confederated Tribes of Umatilla Indian Reservation
- Largest industries by employment:
  - Education, health care, social assistance
  - Retail
  - Arts, recreation
- Eastern Oregon University; Oregon Institute of Technology; Oregon State Cascades; Southern Oregon University

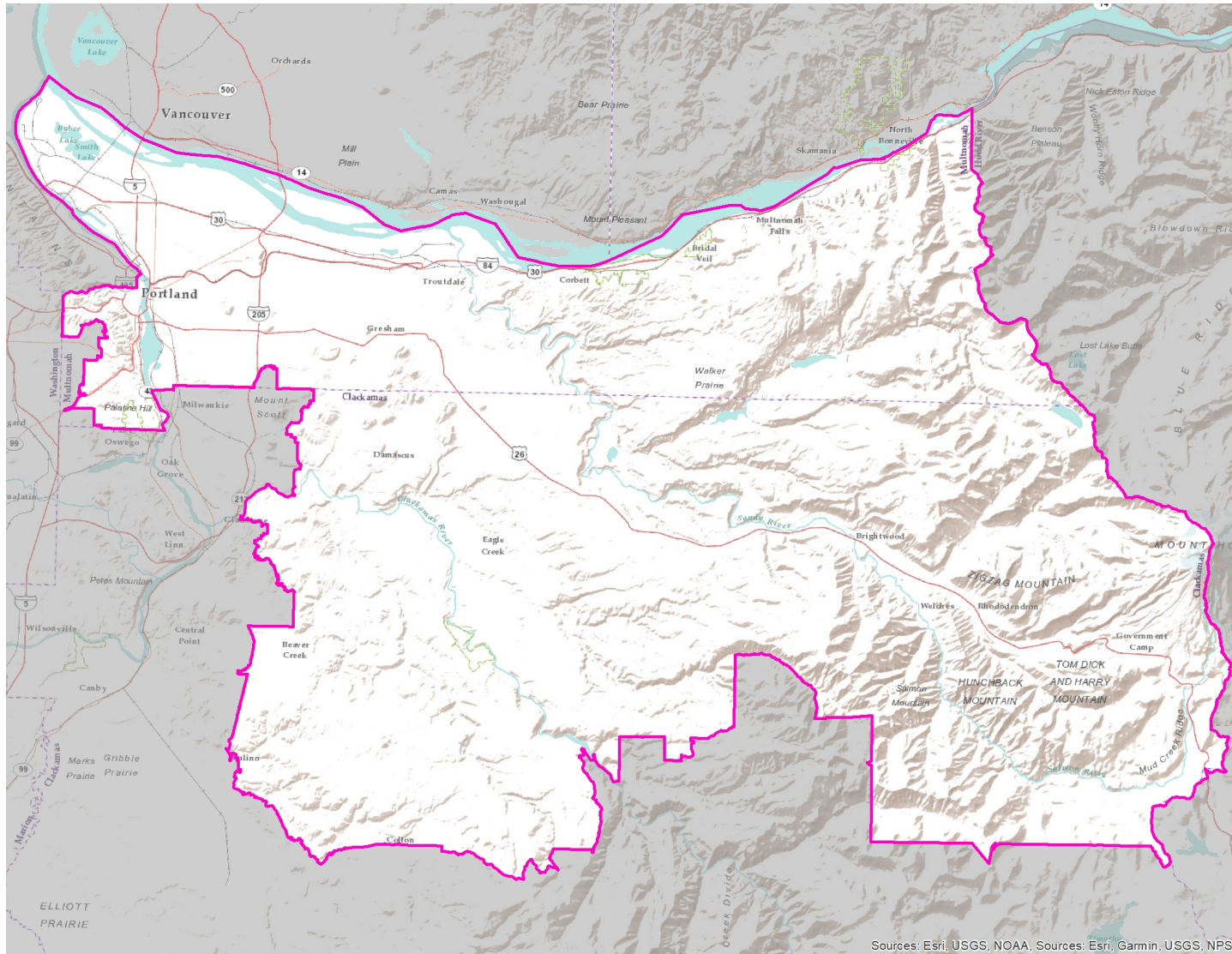
# CURRENT CONGRESSIONAL DISTRICT 3



- Includes the bulk of Multnomah County, along with northeastern areas of Clackamas County
- Columbia River and eastern county boundaries bound northern and eastern lines of the district



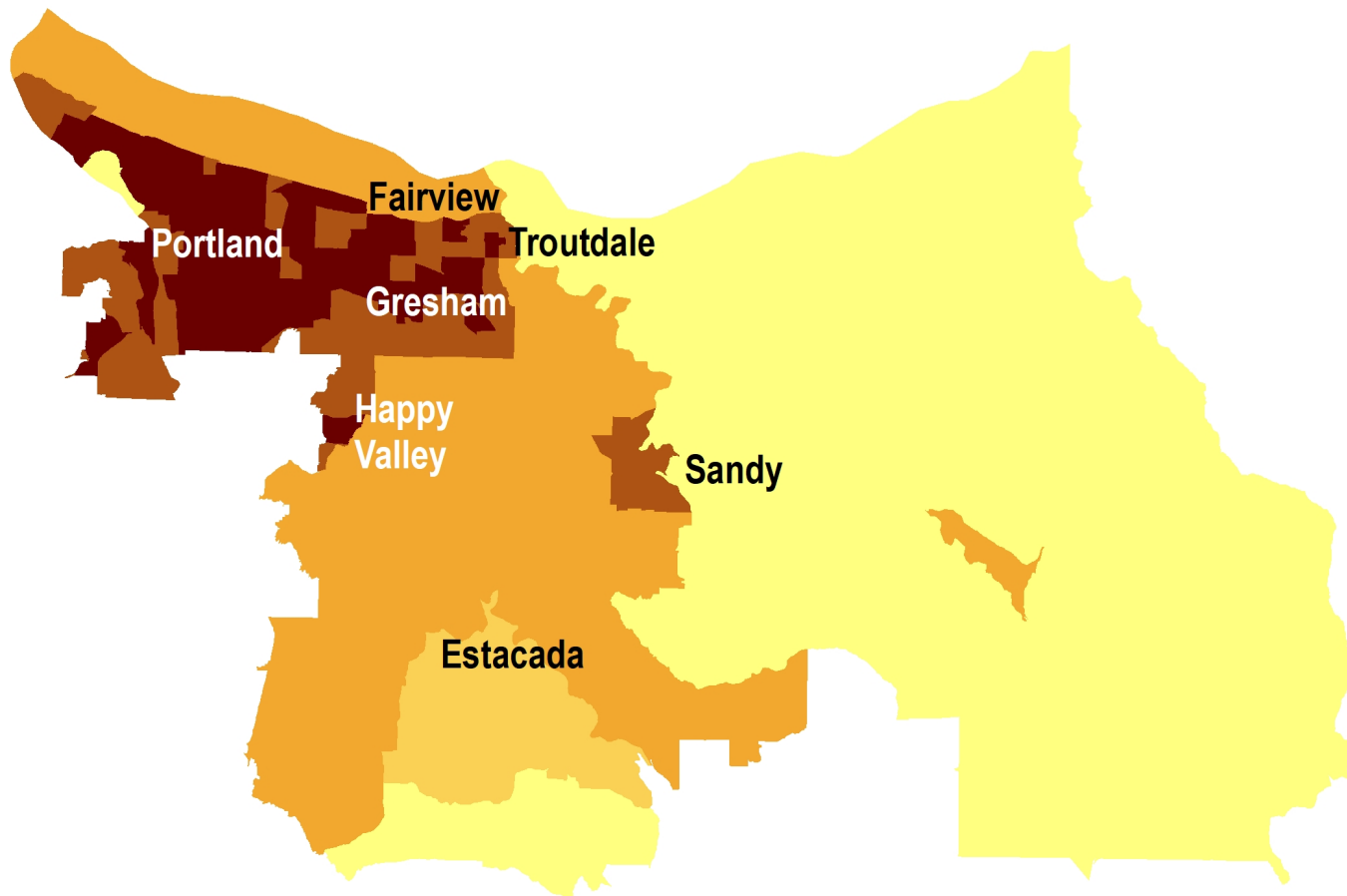
# CURRENT CONGRESSIONAL DISTRICT 3



- West side of Mount Hood and Cascade Range West Hills/Tualatin Mountains form a physical barrier between Portland and western suburbs
- Confluence of Columbia and Willamette Rivers; Clackamas and Sandy Rivers also flow through the district
- More populated in relatively flat, western areas and into the hills of Clackamas County



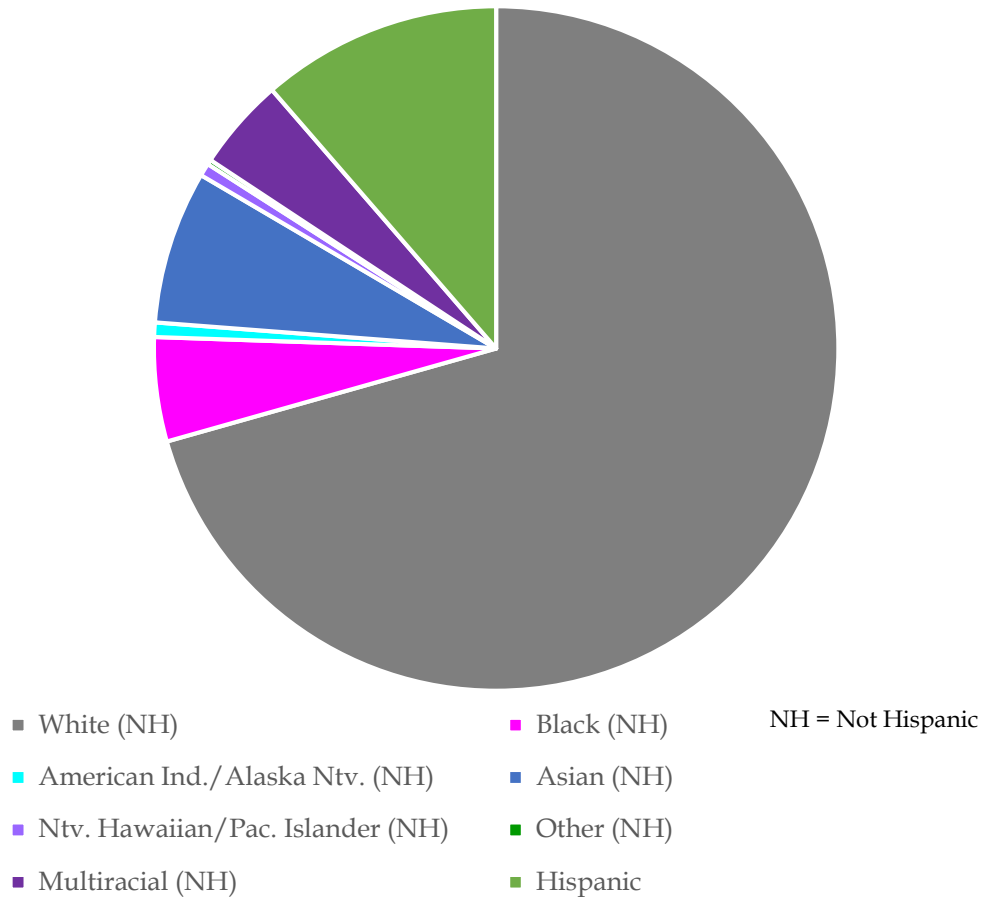
# CURRENT CONGRESSIONAL DISTRICT 3



- Current population estimate: 837,545
  - 11,584 above average district population
  - District had 766,215 as of Census 2010
- Population density of 757 people per square mile
- Population centers include Portland with some density through Sandy and Estacada

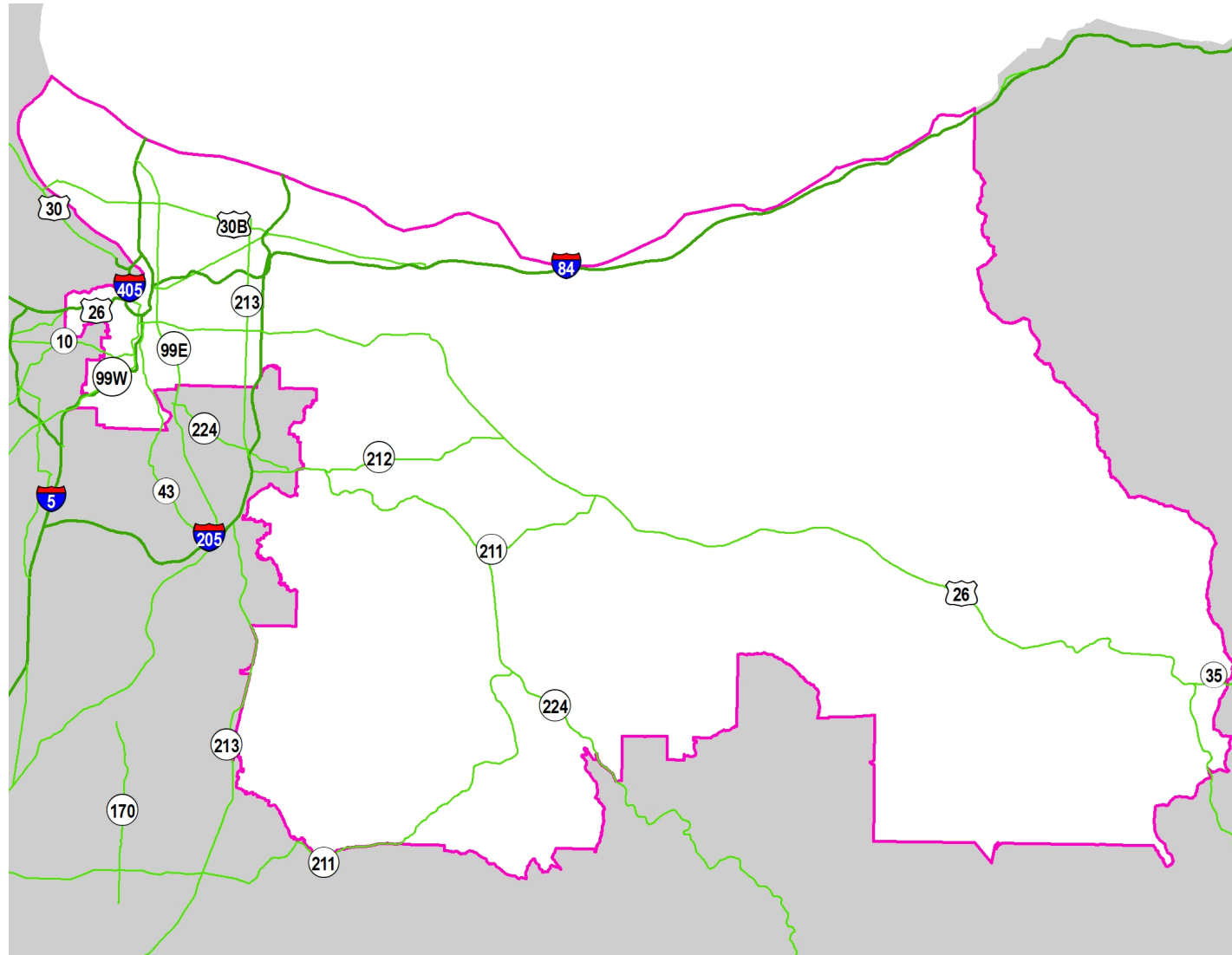
# CURRENT CONGRESSIONAL DISTRICT 3

District 3: Race/Ethnicity (2019 ACS)



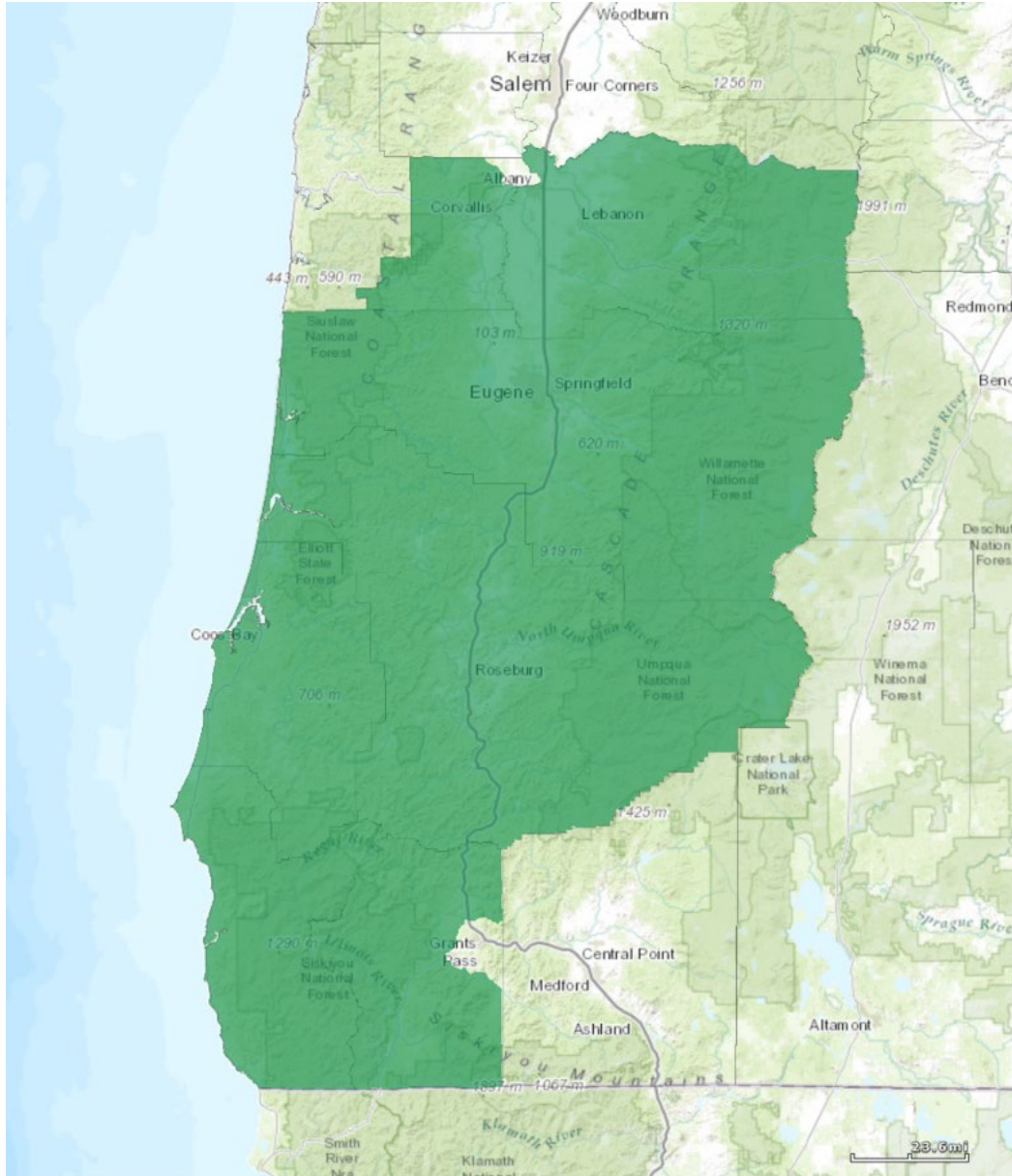
- People of color comprise 29.4% of District 3
- Some areas along I-84 in the eastern Portland Metro area are over 25% Hispanic
- African American population still mainly in northwestern Portland, but dispersing with smaller groupings elsewhere
- Asian and Pacific Islander groups along I-205 and east of that

# CURRENT CONGRESSIONAL DISTRICT 3



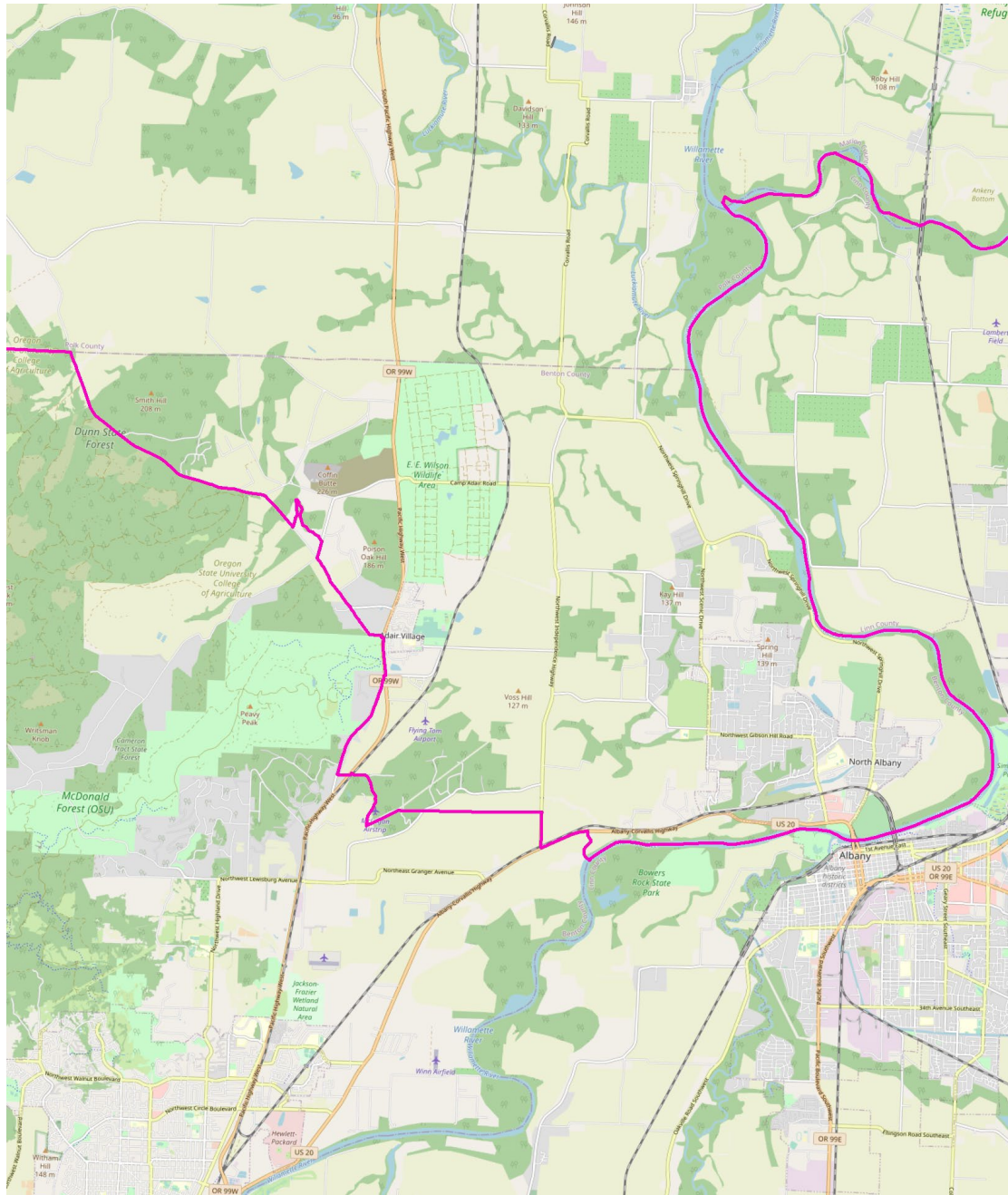
- Highways 26 and 84 are major transportation corridors, with Interstates 5 and 205 running through the western areas
- Larger public transportation providers include TriMet in Portland Metro
- Largest industries by employment:
  - Education, health care, social assistance
  - Professional, scientific, management
  - Arts, recreation
- Oregon Health & Science University; Portland State University

# CURRENT CONGRESSIONAL DISTRICT 4



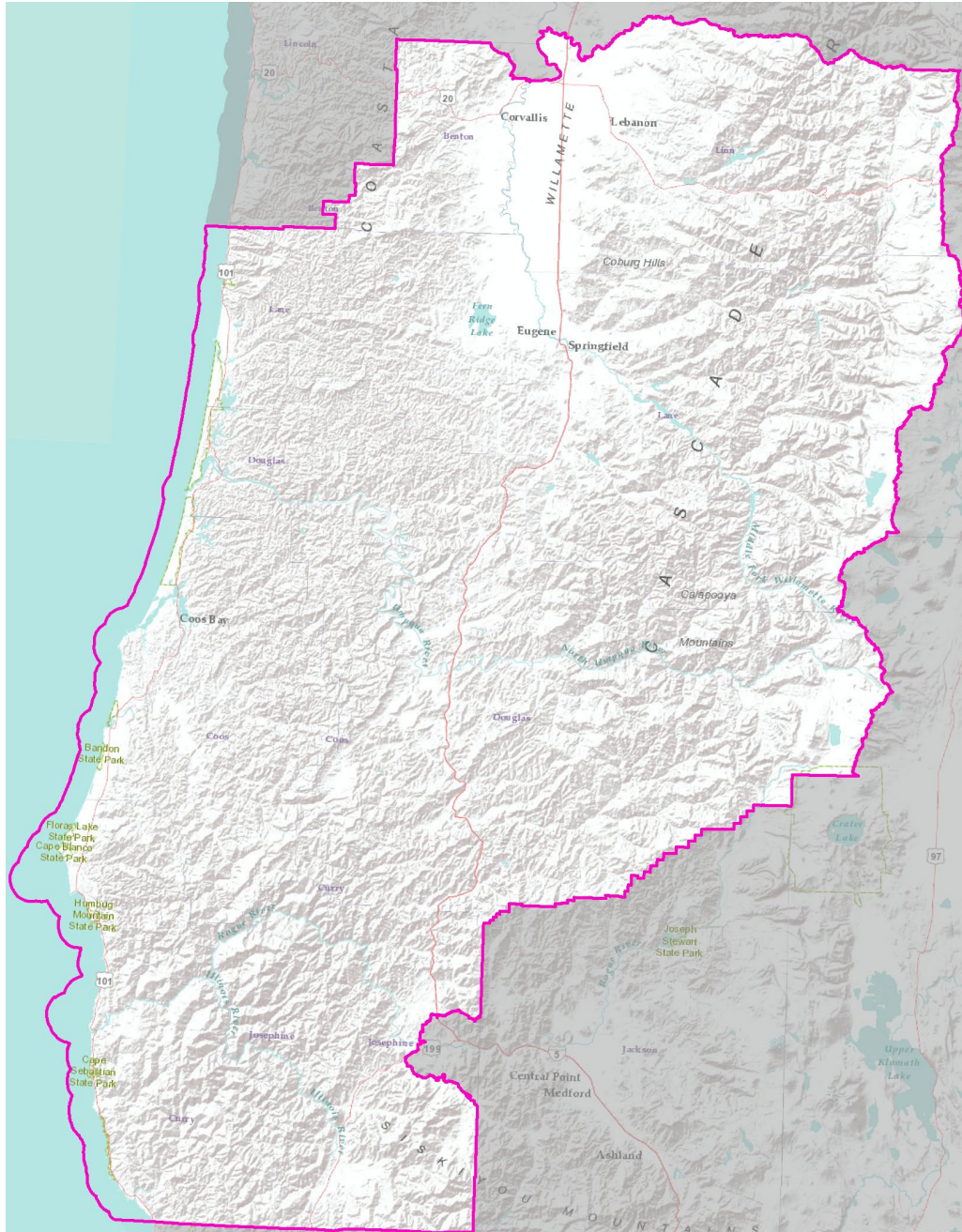
- Includes all of Coos, Curry, Douglas, Lane, and Linn Counties
- Includes most of Benton and Josephine Counties
- Pacific Ocean, county lines, roads, and rivers bound the district

# CURRENT CONGRESSIONAL DISTRICT 4



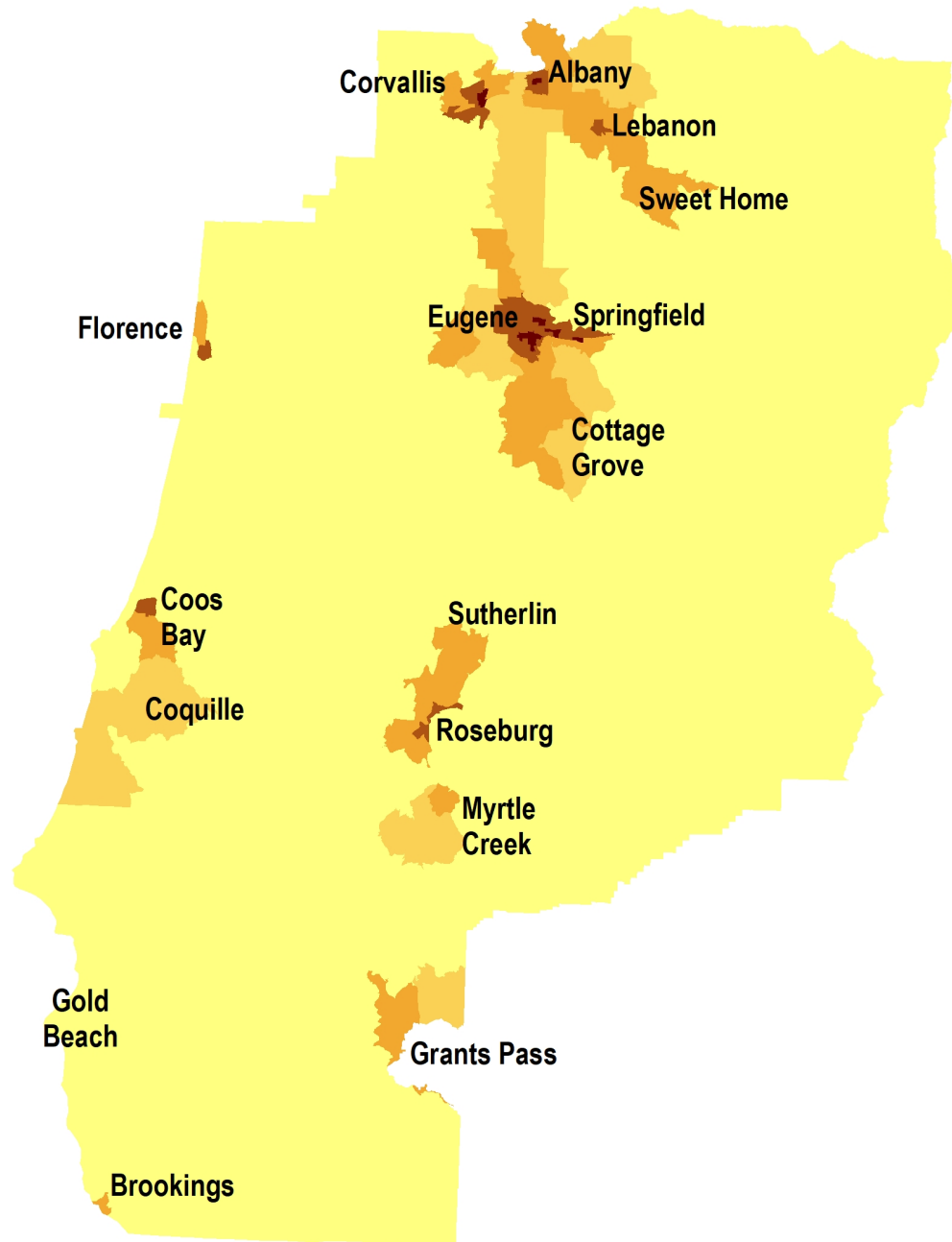
- Benton County and the City of Albany are mostly in District 4
- Adair Village and the portion of Albany in Benton County are in District 5
- Tampico Road, NW Arboretum Road, Highway 99W, and a power line follow the bulk of the county split

# CURRENT CONGRESSIONAL DISTRICT 4



- Southern Willamette Valley and Coast Range; Cascade Range
- Heavily forested and mountainous with relatively few flat areas
- Umpqua River
- Applegate Valley
- Coos Bay

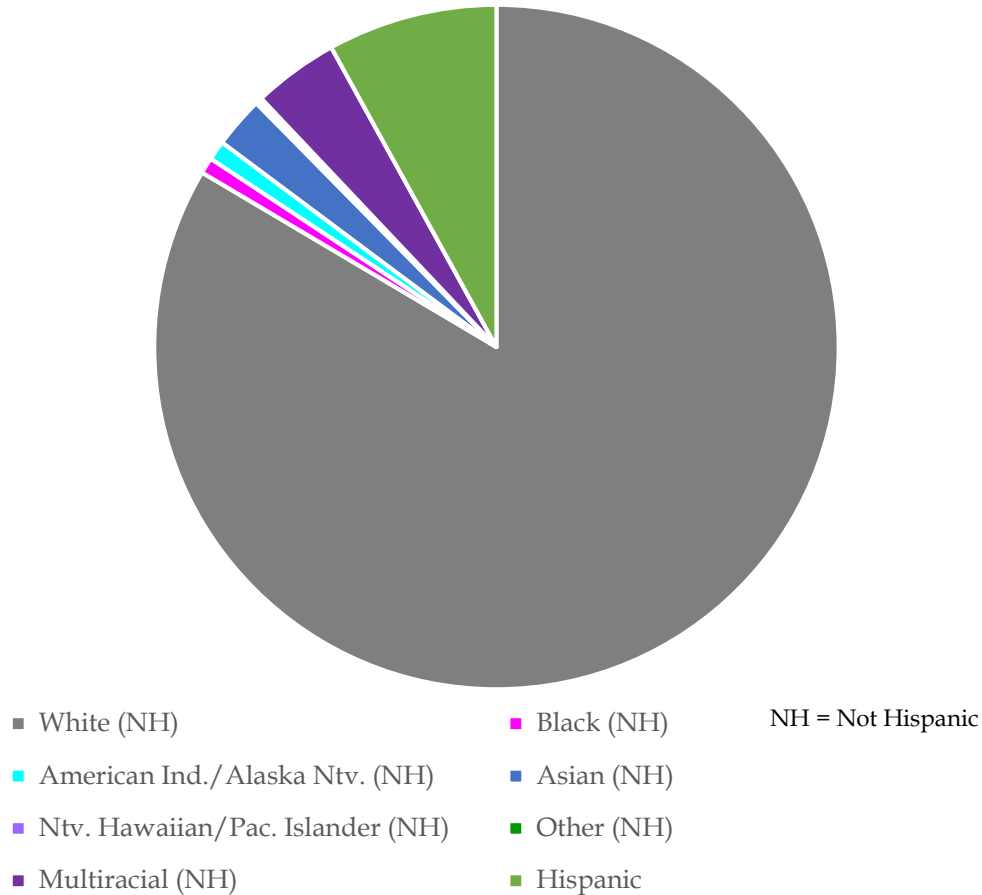
# CURRENT CONGRESSIONAL DISTRICT 4



- Current population estimate: 803,194
  - 22,767 below average district population
  - District had 766,214 as of Census 2010
- Population density of 46 people per square mile
- Population centers include Albany, Coos Bay, Corvallis, Eugene, Roseburg

# CURRENT CONGRESSIONAL DISTRICT 4

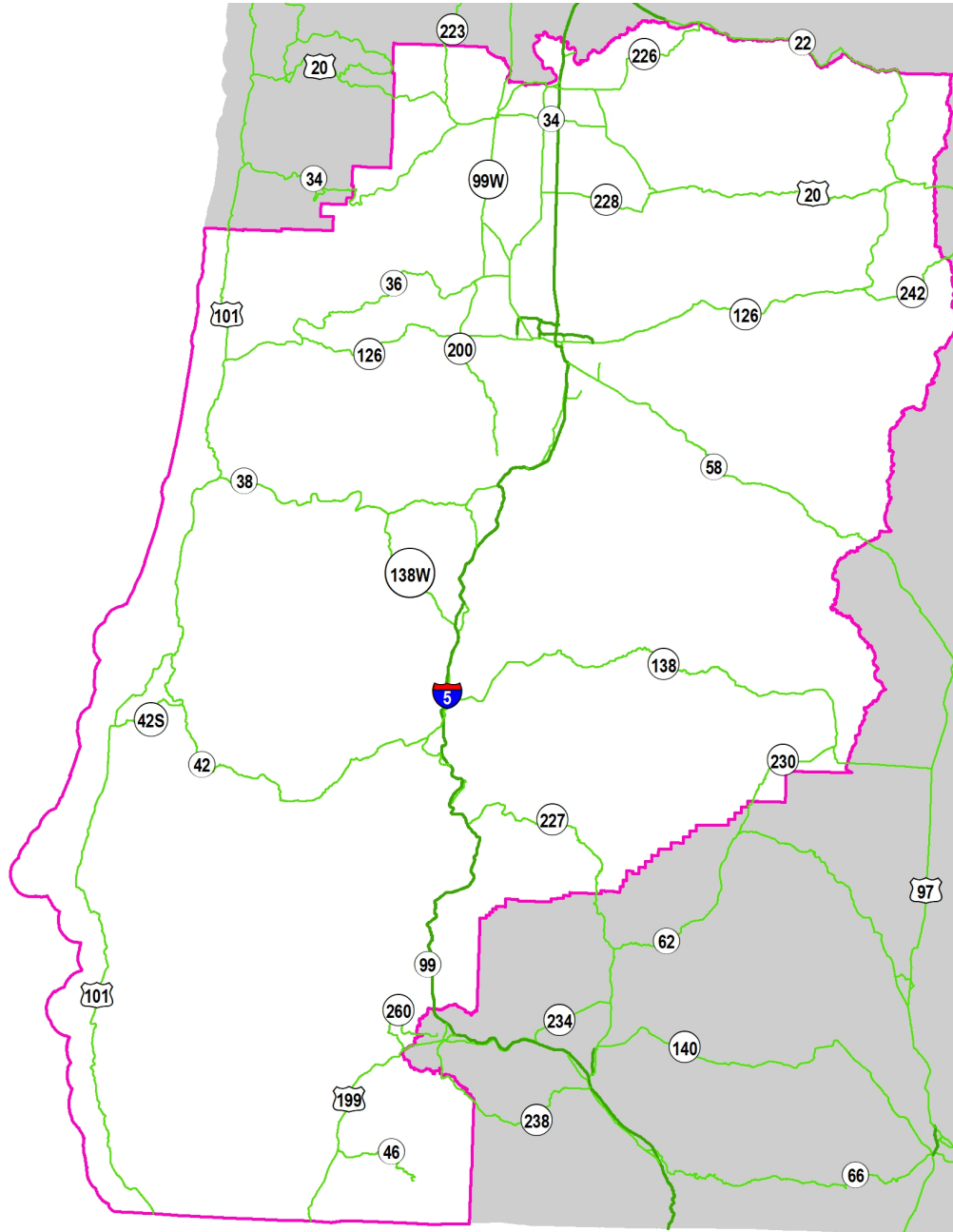
District 4: Race/Ethnicity (2019 ACS)



- People of color comprise 16.5% of District 4
- Some tracts in Eugene over a quarter Hispanic, but no other part of District 4 reaches that
- Some multiracial groupings along Highway 22, north of Florence, and south of Coos Bay
- Most groups smaller in number and more evenly spread out over the district

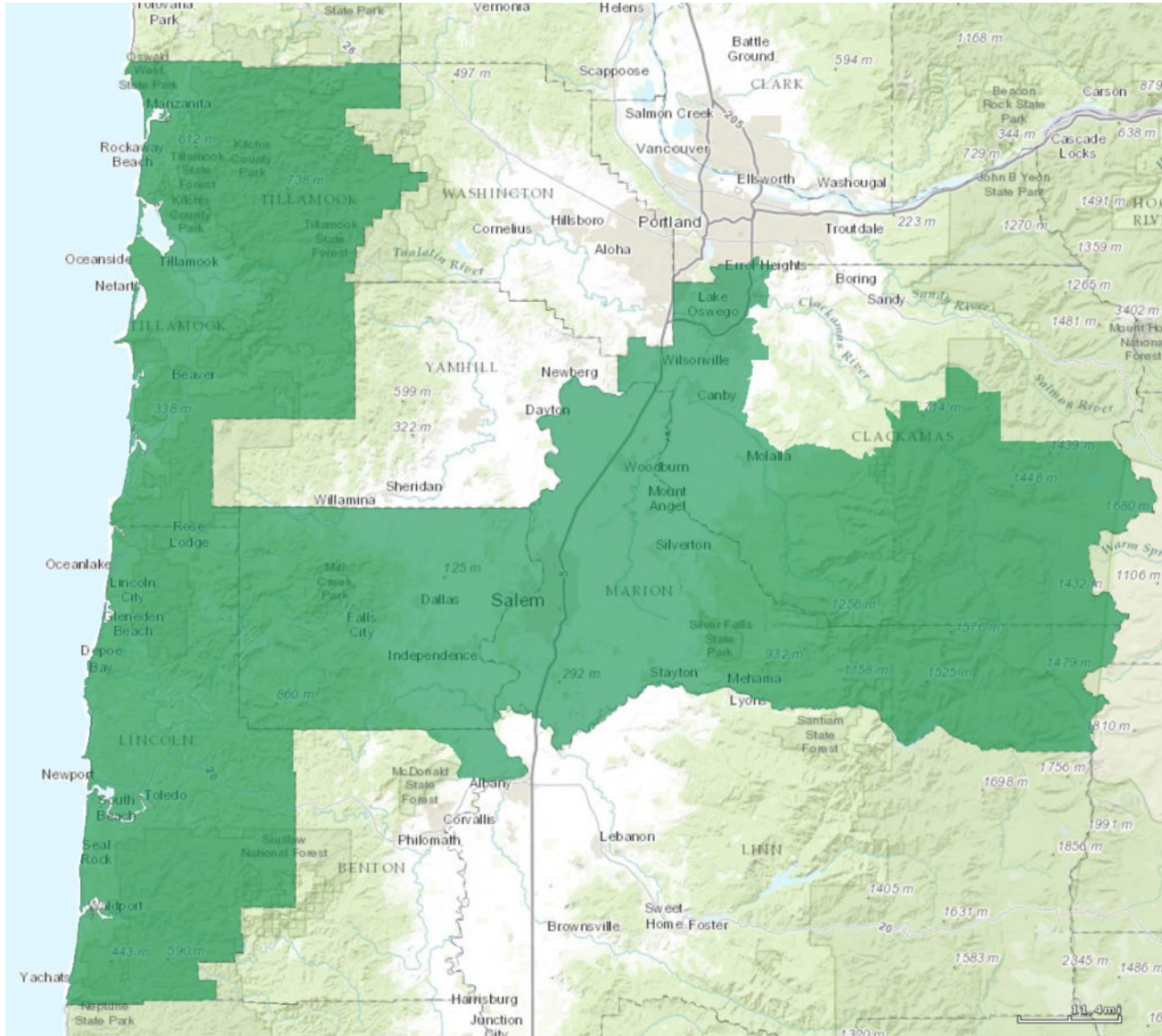


# CURRENT CONGRESSIONAL DISTRICT 4



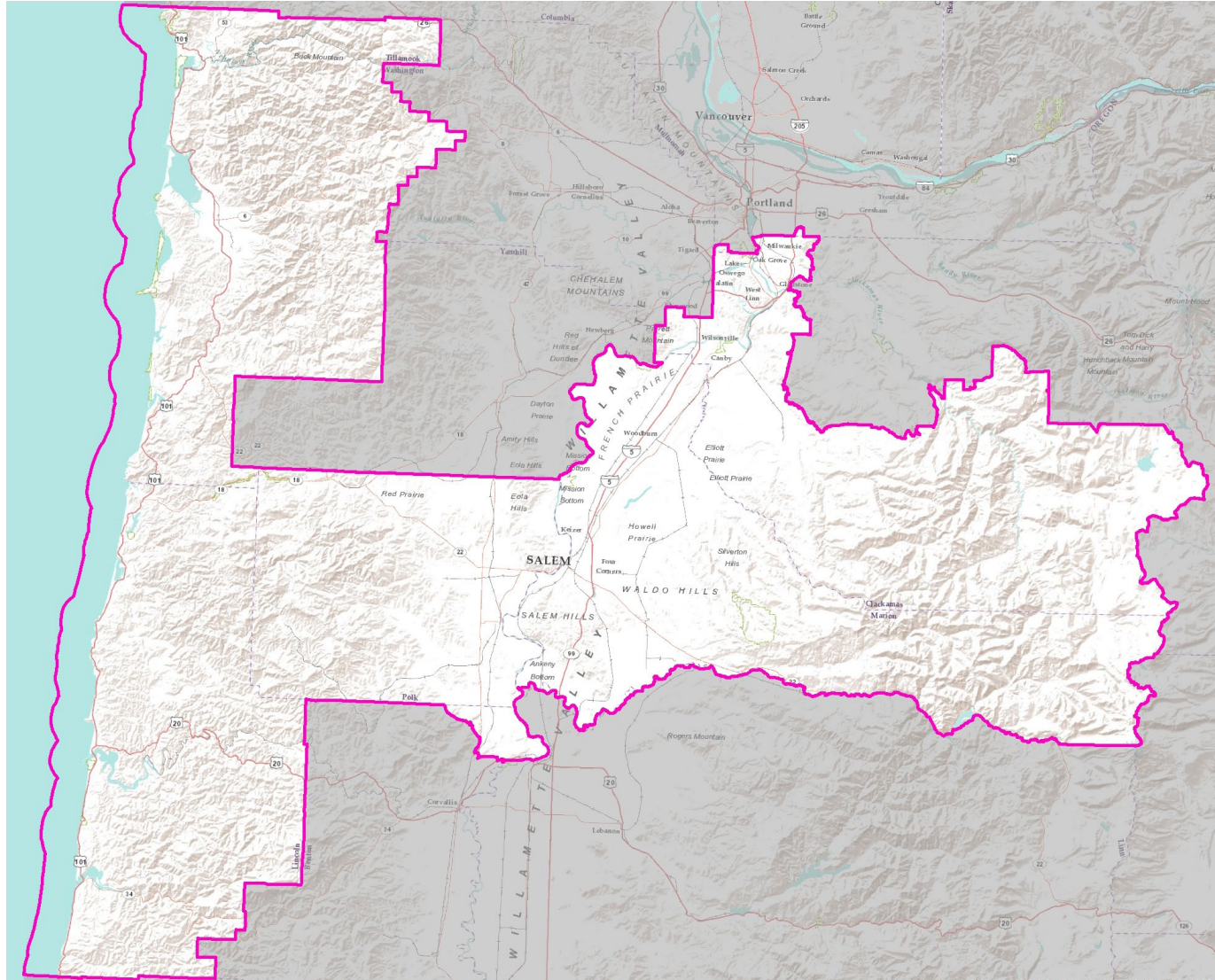
- Interstate 5 and Highways 99, 101, and 126 are major transportation corridors
- Few connections in some areas
- Larger public transportation providers include Albany Transit Service, Corvallis Transit System, Lane Transit District
- Largest industries by employment:
  - Education, health care, social assistance
  - Retail
  - Manufacturing
- Oregon State University; University of Oregon

# CURRENT CONGRESSIONAL DISTRICT 5



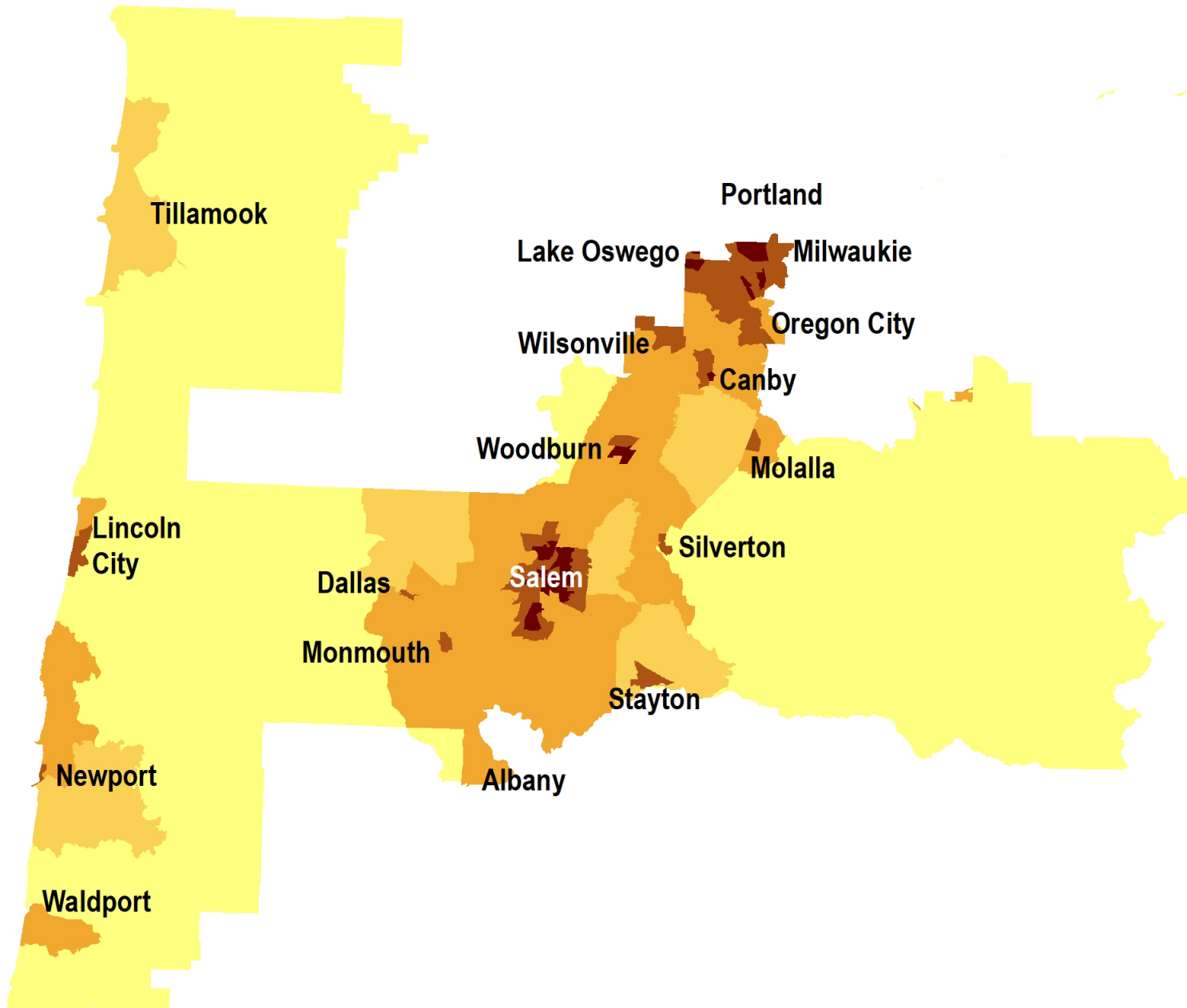
- Includes all of Lincoln, Marion, Polk, and Tillamook Counties
- Includes southern and western Clackamas County and a small portion of northeastern Benton County
- Pacific Ocean, county lines, roads, and rivers bound the district

# CURRENT CONGRESSIONAL DISTRICT 5



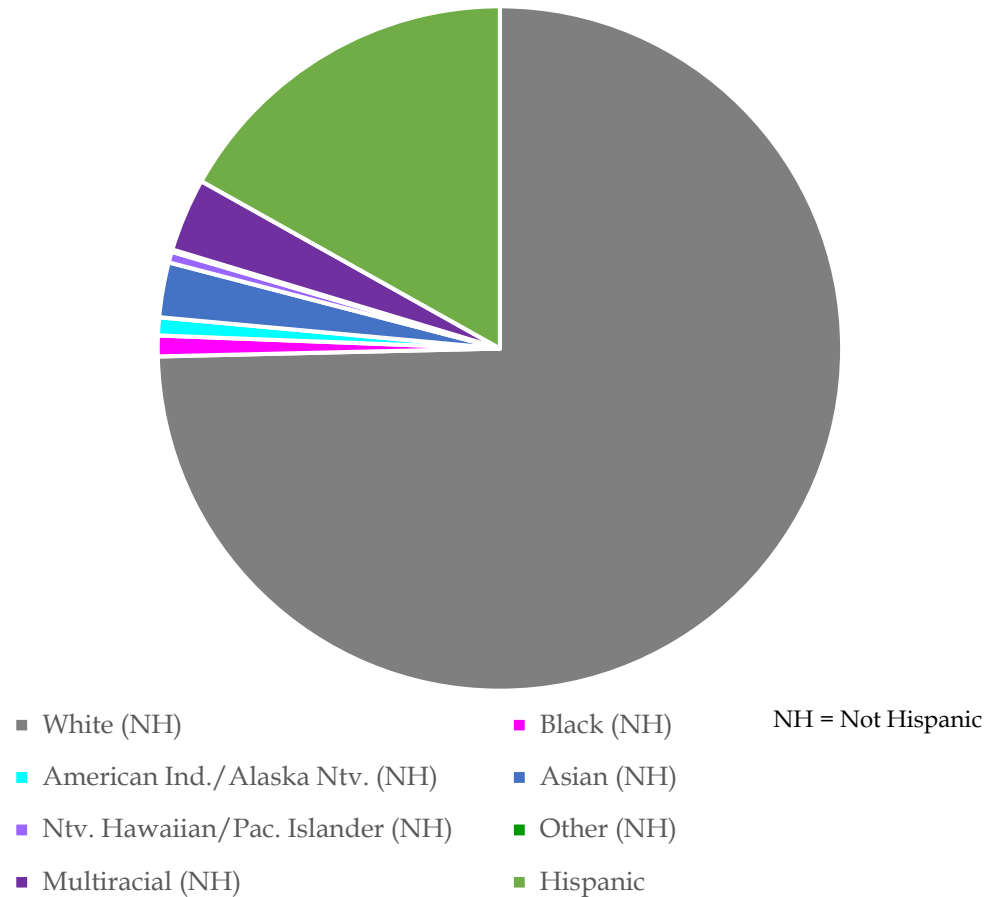
- T-shaped district connects the north-central coast, central Willamette Valley, and Cascade Range
- Mountainous and forested west and east with agricultural and urban mix in the valley
- Tillamook Bay
- Silver Falls State Park

# CURRENT CONGRESSIONAL DISTRICT 5



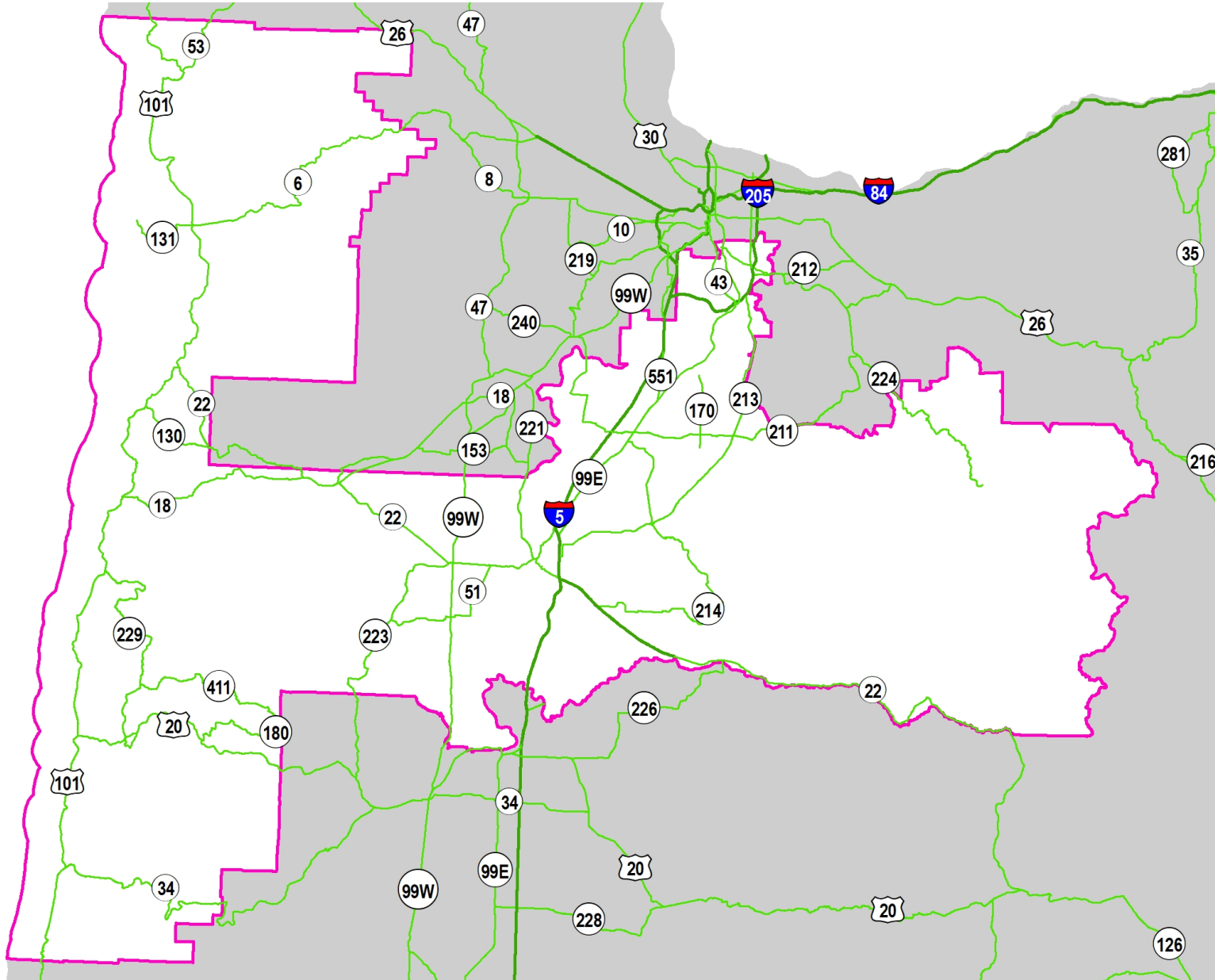
- Current population estimate: 828,319
  - 2,358 above average district population
  - District had 766,214 as of Census 2010
- Population density of 158 people per square mile
- Population centers include Salem and the I-5 corridor, along with some areas along the coast

District 5: Race/Ethnicity (2019 ACS)



- People of color comprise 25.4% of District 5
- Hispanic majorities in parts of Woodburn and Salem; over a quarter of the population in Independence, Mount Angel, Newport, and other areas in Salem and along I-5
- Some Pacific Islander clusters in Salem and Wilsonville
- Other groups more evenly dispersed

# CURRENT CONGRESSIONAL DISTRICT 5



- Highways 22, 101, and Interstate 5 are major transportation corridors
- Larger public transportation providers include Albany Transit Service, Salem Area Mass Transit District, South Metro Area Regional Transit
- Largest industries by employment:
  - Education, health care, social assistance
  - Retail
  - Manufacturing
- Western Oregon University