



# *Senate Committee on Natural Resources and Wildfire Recovery*

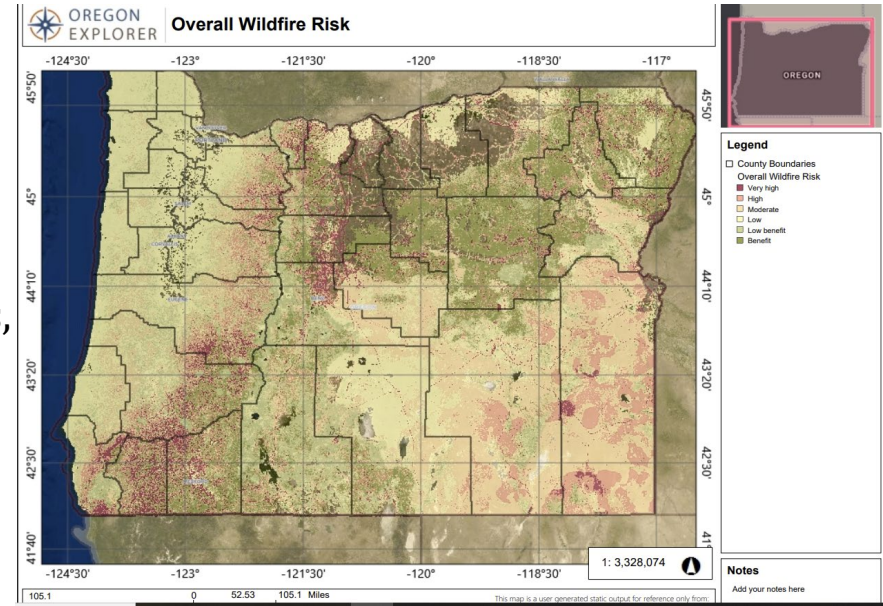
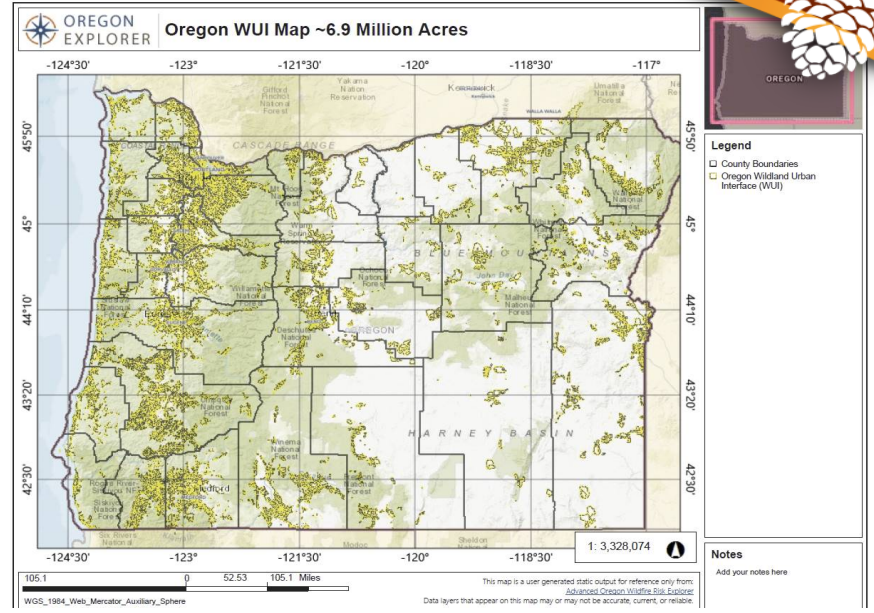
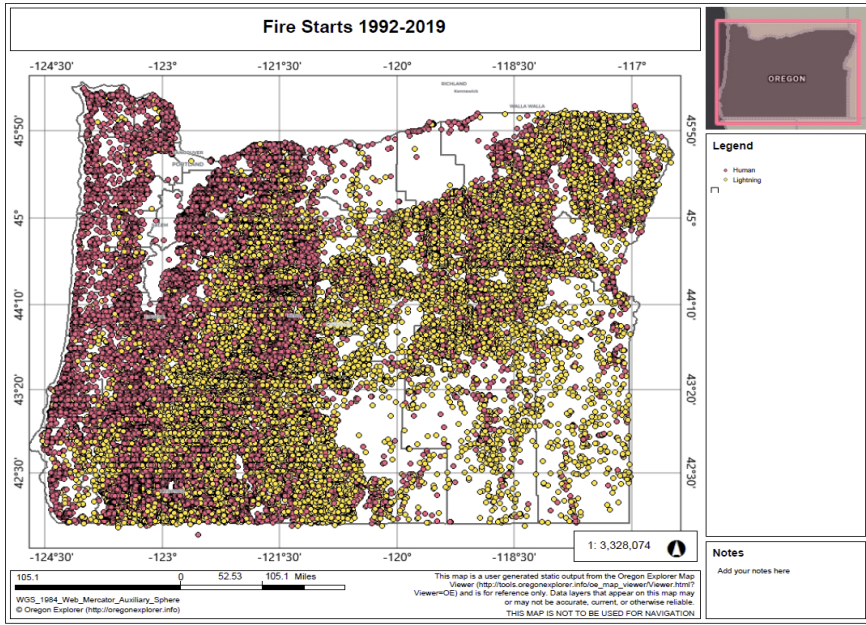
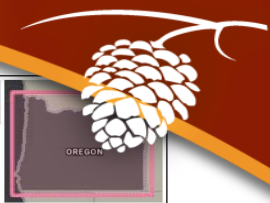
*March 10, 2021*

## **WUI & Wildfire Risk Mapping**



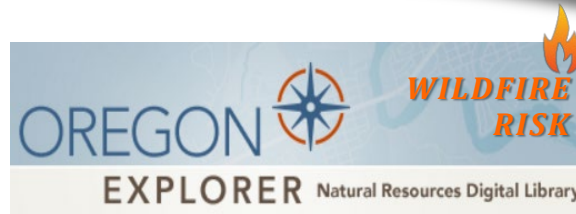
**Doug Grafe, Chief of Fire Protection**

ShangriLa Lane Fire  
4/21/2020, ODF-SWO District



A tool for fire managers, prevention specialists, homeowners and communities to access the best fire risk data available.

<https://oregonexplorer.info/topics/wildfire-risk?ptopic=62>



**Other Contacted Stakeholders/Evaluators**

Natural Resource Conservation Service  
Firewise  
Clackamas Emergency Management  
Office of Management Western Wildland Environmental Threat Assessment Center  
Baker County Planning Department  
FEMA  
The Nature Conservancy  
Polk Soil and Water Conservation District  
Benton County  
Southern Oregon Forest Restoration Collaborative  
Lomakatsi Restoration Project  
Jackson County  
Ashland Chamber of Commerce  
Oregon Forest Resources Institute  
PNW Fire Analysts and Fire and Fuels Managers/Planners

# **PARTNER ENGAGEMENT IN CREATION OF OREGON EXPLORER**

## **Steering Committee**

ODF: 11 Districts, PNP, Protection

USFS/BLM

Office of State Fire Marshal

Dept. of Land Conservation and Development

Keep Oregon Green

Marion County Emergency Management

Coos Watershed Association

Blue Mountains Cohesive Strategy

Ashland Fire Chief

OSU, OSU Extension

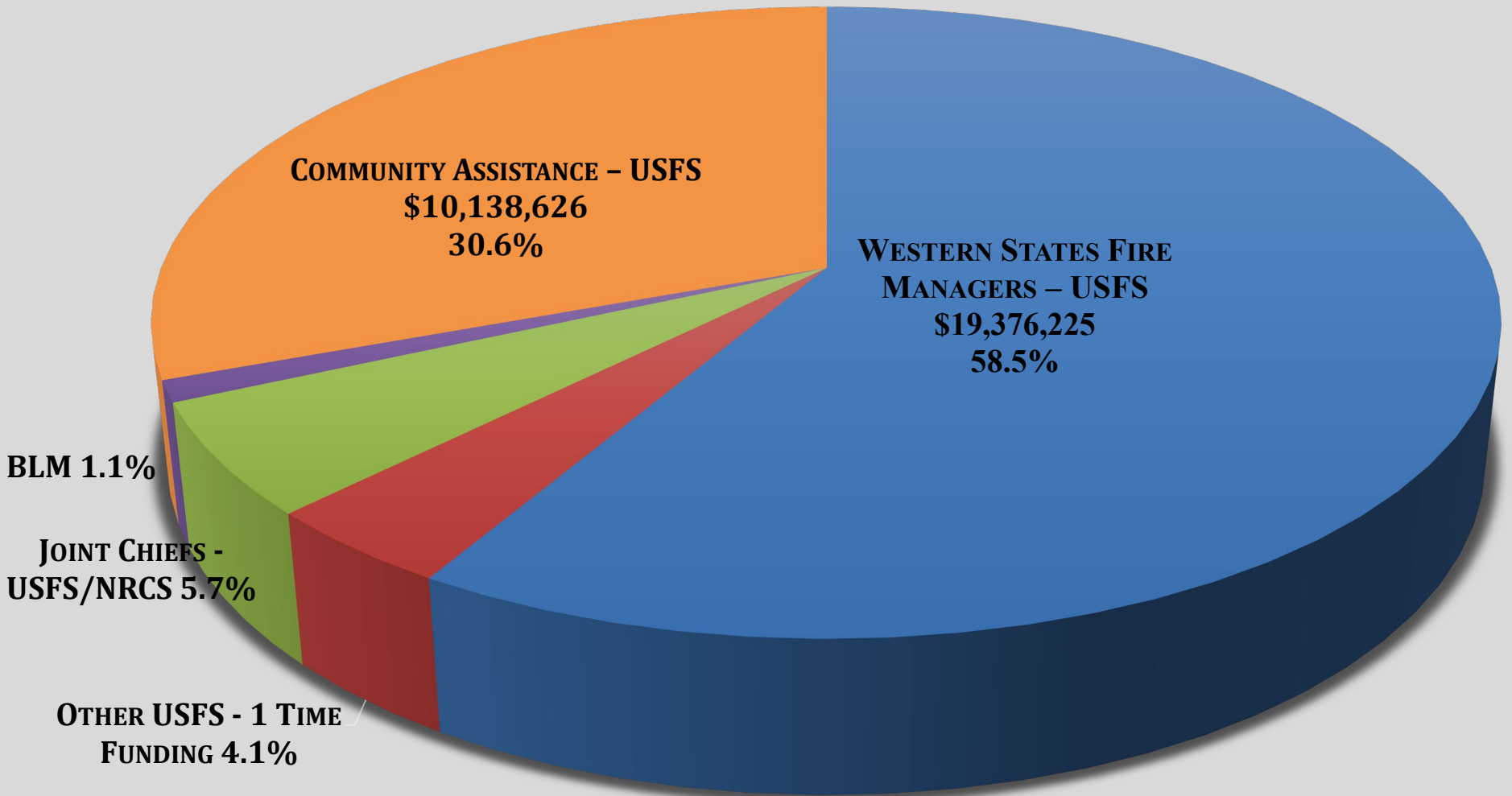
University of Oregon - Oregon Partnership for

Disaster Resilience

Deschutes County Project Wildfire

Fire Adapted Communities Learning Network

**ODF - WUI FUELS TREATMENTS 2010-2020 BY  
FEDERAL FUNDING SOURCE  
TOTAL AWARDED \$33,131,027**





# Re-purposing the Wildfire Risk Map

- ORS 477 Revisions Needed:  
(*SB 360, 1997 : HB 2222, 2019*)
  - Defining the WUI State-wide
    - Mapping the WUI
  - Advancing the Wildfire Fire Risk Map with an intent to:
    - Inform Defensible Space Standards
    - Inform building codes such as hardening of homes
    - Inform land use policy.



# Timeline

