

Race and Ethnicity in the Census

House Committee on Redistricting

March 4, 2021

Charles Rynerson
State Data Center Coordinator
Population Research Center
College of Urban and Public Affairs

About PRC

- Established in 1965 at Portland State College as the Center for Population Research and Census, PRC serves the entire state of Oregon by providing training and knowledge for solutions to problems in applied demography, including population estimates, projections, geospatial analysis, and census-taking.
- Centers and Institutes at PSU are expected to be self-supporting, with little or no funding from University general funds. PRC's core programs are supported by state funds for targeted programs and DLCD technical assistance grants. Other revenues come from smaller contracts for specialized demographic studies requested by state and local agencies, and to a lesser extent, non-profits and businesses.

PRC Core Programs: Census and Research

- The State Data Center (SDC) is a cooperative program with the U.S. Census Bureau that makes demographic and socio-economic data and information accessible to the public through a network of local experts.
 - The SDC collaborates with the Census Bureau to improve the quality of Oregon's data by supporting the decennial census and other programs through outreach and engagement.
 - Public service includes data users conferences and assistance to individuals and organizations needing to access and understand census and other demographic data.
- Custom demographic studies. PRC produces estimates and projections for many Oregon school districts to meet their statutory reporting requirements (ORS 195.11), and for utility districts, and conducts other studies such as Head Start assessments and redistricting proposals for local governments.

PRC Core Programs: Estimates

- Annual estimates of the size and composition of the resident population of Oregon's cities and counties (ORS 190), used for diverse purposes, including:
 - Appropriations. For example, funds from taxes on liquor (ORS 221), amusement devices (ORS 320 and 471) and cigarettes (ORS 323), and a portion of vehicle fees (ORS 366), special transportation funds (ORS 391), and mental health services (ORS 430).
 - Federal estimates. The PRC collaborates with the US Census Bureau to update federal databases leading up to the decennial census. Thereafter, PRC annually consults with the Census Bureau to ensure that boundary changes and housing and population dynamics are accurately reflected in federal datasets, ensuring the equitable allocation of federal funds.
- State Shared Revenue Report, [Local Focus, Q1 2021](#)

PRC Core Programs: Forecasts

- Long-run forecasts of the population of the state of Oregon, its counties, and the population in each of Oregon's Urban Growth Boundary (UGB) areas.
 - Local governments are required to use the forecasts in their comprehensive plans (OAR 660-032).
 - These forecasts are used to inform decisions on when and how to expand UGBs to accommodate expected growth (ORS 195.033 and OAR 577-050).
 - Oregon DEQ requires that 20 year population forecasts be included in wastewater planning documents.
 - Forecasts are used by ODOT and local MPOs for transportation planning.

Race and Ethnicity in the Census

The title reflects the content of this presentation, with emphasis on “In the Census” because the more interesting historical and sociological discussions of diverse communities in Oregon are beyond its scope. Furthermore, the Census Bureau’s methods of collecting and reporting population by race, ethnicity, ancestry, etc., based on evolving laws and societal norms, have never been adequate to completely describe the nation’s population at a given time.

However, we are fortunate to have these records, given their constitutional relevance to reapportionment and redistricting as well as their historical significance.

Census of 1860 - Categories

- Before 1860, American Indians were regarded as belonging to separate nations and were not separately identified in the US decennial census.
- In 1860, census takers were instructed to enumerate only American Indians who were taxed. Taxed American Indians were those who had renounced tribal rule and exercised the rights of citizens under state or territorial laws.
- Thus, the racial categories utilized in the 1860 Census when classifying the “color” of individuals were “white,” “black,” “Indian,” and “Mulatto.”
- The racial category of “Chinese” was included on the 1860 Census questionnaire in California only.

Source: Humes, K., & Hogan, H. (2009). Measurement of race and ethnicity in a changing, multicultural America. *Race and Social Problems*, 1, 111–131.

Census of 1860 - Oregon

Total population	52,465	100.0%
White	52,160	99.4%
Black or African American	128	0.2%
American Indian and Alaska Native	177*	0.3%
Asian or Pacific Islander	*	
Hispanic or Latino (of any race)	*	

Source: U.S. Census (21st Century race terminology)

*Census categories in 1860 did not reflect the full diversity of Oregon or the U.S. The following slides include context of the census methodology and research on some additional communities overlooked by the 1860 Census.

Overlooked by the 1860 Census

- Small groups of Cantonese-Chinese miners, who arrived in Oregon Territory in 1850-1853, represented the first Chinese migration beyond northern California. From 1855 through 1865, the majority of Cantonese-Chinese settlers in Oregon were miners. Their numbers were unstable, rising and falling with the boom and bust of gold mining.
- Because of their skill, *vaqueros* were hired by American cattlemen to help with cattle drives to the Oregon Territory, and are considered among the pioneers of eastern Oregon.
- According to one scholar, “the first person of Latino origin listed in the [1850] Oregon census is Guadalupe de la Cruz, a thirteen-year old boy residing in Oregon City.” By 1860, twenty Mexicans, including five women, lived in Oregon City.

Lee, Douglas. “Chinese Americans in Oregon.” The Oregon Encyclopedia, https://www.oregonencyclopedia.org/articles/chinese_americans_in_oregon/.

Garcia, Jerry. “Latinos in Oregon.” The Oregon Encyclopedia, https://www.oregonencyclopedia.org/articles/hispanics_in_oregon/.

Accessed February 10, 2021

Censuses of 1870-1890

- The 1870 and 1880 Censuses included the following categories to record the “color” of individuals: ‘white,” “black,” “Indian,” “Chinese,” and “Mulatto.”
- By the 1890 Census, the Japanese population was large enough to be included as a separate racial category beyond California.
- The 1890 Census also represented the first attempt to enumerate all American Indians—including those living in American Indian Territory and on reservations.
- Just as in the case of race, there was a need to produce statistics on narrowly defined groups among the white population, based on national origin. Data were gathered in 1890 on the place of birth of both the mother and the father.

Source: Humes, K., & Hogan, H. (2009). Measurement of race and ethnicity in a changing, multicultural America. *Race and Social Problems*, 1, 111–131.

Census of 1890 - Oregon

Total population	317,704	100.0%
White	301,982	95.1%
Black or African American	1,186	0.4%
American Indian and Alaska Native	4,971	1.6%
Asian or Pacific Islander	9,565	3.0%
Hispanic or Latino (of any race)	N/A	

Source: U.S. Census (21st Century race terminology)

Late 19th – Early 20th Century

- Oregon had the nation's 2nd largest Chinese population in each census from 1880 to 1910.
- Oregon had the nation's 3rd largest Japanese population in each census from 1900 to 1940.
- Portland's Asian population counts of 4,559 in 1890 and 9,030 in 1900 represented 10% of the city's population and was larger than all U.S. cities other than San Francisco.
- Astoria's 925 Asian residents in 1890 represented 15% of the city's population.
- Oregon's peak Asian population of 12,898 in 1900 was not surpassed until 1970.
- Oregon's Black population grew very slowly, from 1,186 in 1980 to 2,565 in 1940.
- The 1940 Census counted a "white population of Spanish mother tongue" of 1,277.

Census of 1940 - Oregon

Total population	1,089,684	100.0%
White	1,075,731	98.7%
Black or African American	2,565	0.2%
American Indian and Alaska Native	4,594	0.4%
Asian or Pacific Islander	6,794	0.6%
Hispanic or Latino (of any race)	*	

Source: U.S. Census (21st Century race terminology)

1940 was the first census in which Oregon's population surpassed one million and added a 4th congressional seat for the 1942 election. However, the Native American and Asian counts were smaller than in the 1890 Census.

Census of 1950 - Oregon

Total population	1,521,341	100.0%
White	1,497,128	98.4%
Black or African American	11,529	0.8%
American Indian and Alaska Native	5,820	0.4%
Asian or Pacific Islander	6,513	0.4%
Hispanic or Latino (of any race)	*	

Source: U.S. Census (21st Century race terminology)

Portland's Black population exploded from about 2,000 in 1940 to a high of 22,000 in 1944, as Black shipyard workers, many of them with families, were recruited from other parts of the country and moved to Portland.

Millner, Darrell. "Blacks in Oregon." The Oregon Encyclopedia, https://www.oregonencyclopedia.org/articles/blacks_in_oregon/. Accessed February 10, 2021.

Census of 1990 - Oregon

Total population	2,842,321	100.0%
Not Hispanic or Latino	2,729,614	96.0%
White	2,579,732	90.8%
Black or African American	44,982	1.6%
American Indian and Alaska Native	35,749	1.3%
Asian or Pacific Islander	67,422	2.4%
Some Other Race	1,729	0.1%
Hispanic or Latino (of any race)	112,707	4.0%

Source: U.S. Census (21st Century race terminology)

1990 was the last census without the option to chose more than one race.

1850 to 1990 - Oregon

Table 52. Oregon - Race and Hispanic Origin: 1850 to 1990

(See text for sources, definitions, and explanations)

Census year	Total population	Race					Hispanic origin (of any race)	White, not of Hispanic origin	
		White	Black	American Indian, Eskimo, and Aleut	Asian and Pacific Islander	Other race			
NUMBER									
1990	2 842 321	2 636 787	46 178	38 496	69 269	51 591	112 707	2 579 732	
Sample	2 842 321	2 637 730	45 423	41 626	67 641	49 901	110 606	2 580 591	
1980	2 633 105	2 490 610	37 060	27 314	34 775	43 346	65 847	2 456 012	
Sample	2 633 105	2 496 398	37 454	30 469	40 958	27 826	66 164	2 459 399	
1970	2 091 385	2 032 079	26 308	13 510	15 037	4 451	(NA)	(NA)	
15% sample ¹	2 091 385	2 035 159	26 192	13 110	(NA)	(NA)	34 577	2 002 583	
5% sample	2 091 385	2 036 395	25 908	(NA)	(NA)	(NA)	22 338	2 014 713	
1960	1 768 687	1 732 037	18 133	8 026	9 120	1 371	(NA)	(NA)	
1950	1 521 341	1 497 128	11 529	5 820	6 513	351	(NA)	(NA)	
1940 ²	1 089 684	1 075 731	2 565	4 594	6 794	(X)	1 277	1 074 454	
5% sample ²	(NA)	1 078 640	(NA)	(NA)	(NA)	(X)	1 280	1 077 360	
1930	953 786	938 597	2 234	4 776	8 179	(X)	(NA)	(NA)	
1920	783 389	769 146	2 144	4 590	7 509	(X)	(NA)	(NA)	
1910	672 765	655 090	1 492	5 090	11 093	(X)	(NA)	(NA)	
1900	413 536	394 582	1 105	4 951	12 898	(X)	(NA)	(NA)	
1890 ³	317 704	301 982	1 186	4 971	9 565	(X)	(NA)	(NA)	
1890 ⁴	313 767	301 758	1 186	1 258	9 565	(X)	(NA)	(NA)	
1880	174 768	163 075	487	1 694	9 512				
1870	90 923	86 929	346	318	3 330				
1860	52 465	52 160	128	177	-				
1850	12 093	12 038	55	(NA)	(NA)				
							Black		
							Total	Free	Slave
							128	128	-
							55	55	-

Gibson C, Jung K. Historical Census Statistics on Population Totals by Race, 1790 to 1990, and by Hispanic Origin, 1970 to 1990, for the United States Regions, Divisions, and States.

Washington, DC: US Census Bureau; 2002

Censuses of 2000 and 2010

RACE	2000		2010	
Race alone or in combination with one or more other races				
White	3,055,670	89.3%	3,337,309	87.1%
Black or African American	72,647	2.1%	98,479	2.6%
American Indian and Alaska Native	85,667	2.5%	109,223	2.9%
Asian	127,339	3.7%	186,281	4.9%
Native Hawaiian and Other Pacific Islander	16,019	0.5%	25,785	0.7%
Some Other Race	176,866	5.2%	231,789	6.1%
HISPANIC OR LATINO AND RACE	2000		2010	
Total population	3,421,399		3,831,074	
Hispanic or Latino	275,314	8.0%	450,062	11.7%
Not Hispanic or Latino	3,146,085	92.0%	3,381,012	88.3%
White alone	2,857,616	83.5%	3,005,848	78.5%
Black or African American alone	53,325	1.6%	64,984	1.7%
American Indian and Alaska Native alone	40,130	1.2%	42,706	1.1%
Asian alone	100,333	2.9%	139,436	3.6%
Native Hawaiian and Other Pacific Islander alone	7,398	0.2%	12,697	0.3%
Some Other Race alone	4,550	0.1%	5,502	0.1%
Two or More Races	82,733	2.4%	109,839	2.9%

<https://www.pdx.edu/population-research/census-data-oregon>

Population by Race/Ethnicity

State of Oregon, 2019 ACS

HISPANIC OR LATINO AND RACE	Estimate	MOE*	Share	MOE*
Total population	4,217,737			
Hispanic or Latino (of any race)	566,839		13.4%	
Not Hispanic or Latino	3,60,898		86.6%	
White alone	3,158,958	+/-1,766	74.9%	+/-0.1%
Black or African American alone	75,363	+/-5,491	1.8%	+/-0.1%
American Indian and Alaska Native alone	40,821	+/-3,945	1.0%	+/-0.1%
Asian alone	191,850	+/-4,626	4.5%	+/-0.1%
Native Hawaiian and Other Pacific Islander alone	13,164	+/-2,206	0.3%	+/-0.1%
Some other race alone	5,530	+/-1,795	0.1%	+/-0.1%
Two or more races	165,212	+/-7,853	3.9%	+/-0.2%

Race alone or in combination with one or more other races	Estimate	MOE*	Share	MOE*
Total population	4,217,737			
Black or African American	124,502	+/-3,283	3.0%	+/-0.1%
American Indian and Alaska Native	129,081	+/-6,197	3.1%	+/-0.1%
Asian	263,017	+/-3,066	6.2%	+/-0.1%
Native Hawaiian and Other Pacific Islander	35,802	+/-3,923	0.8%	+/-0.1%
Some other race	175,072	+/-15,164	4.2%	+/-0.4%

*MOE = Margin of Error at the 90% confidence level. Includes sampling error but does not incorporate errors to independent estimates used to weight survey responses.

Source: U.S. Census Bureau, 2019 American Community Survey one-year estimates, Table DP05.

Population Shares by Race/Ethnicity 2000 to 2019

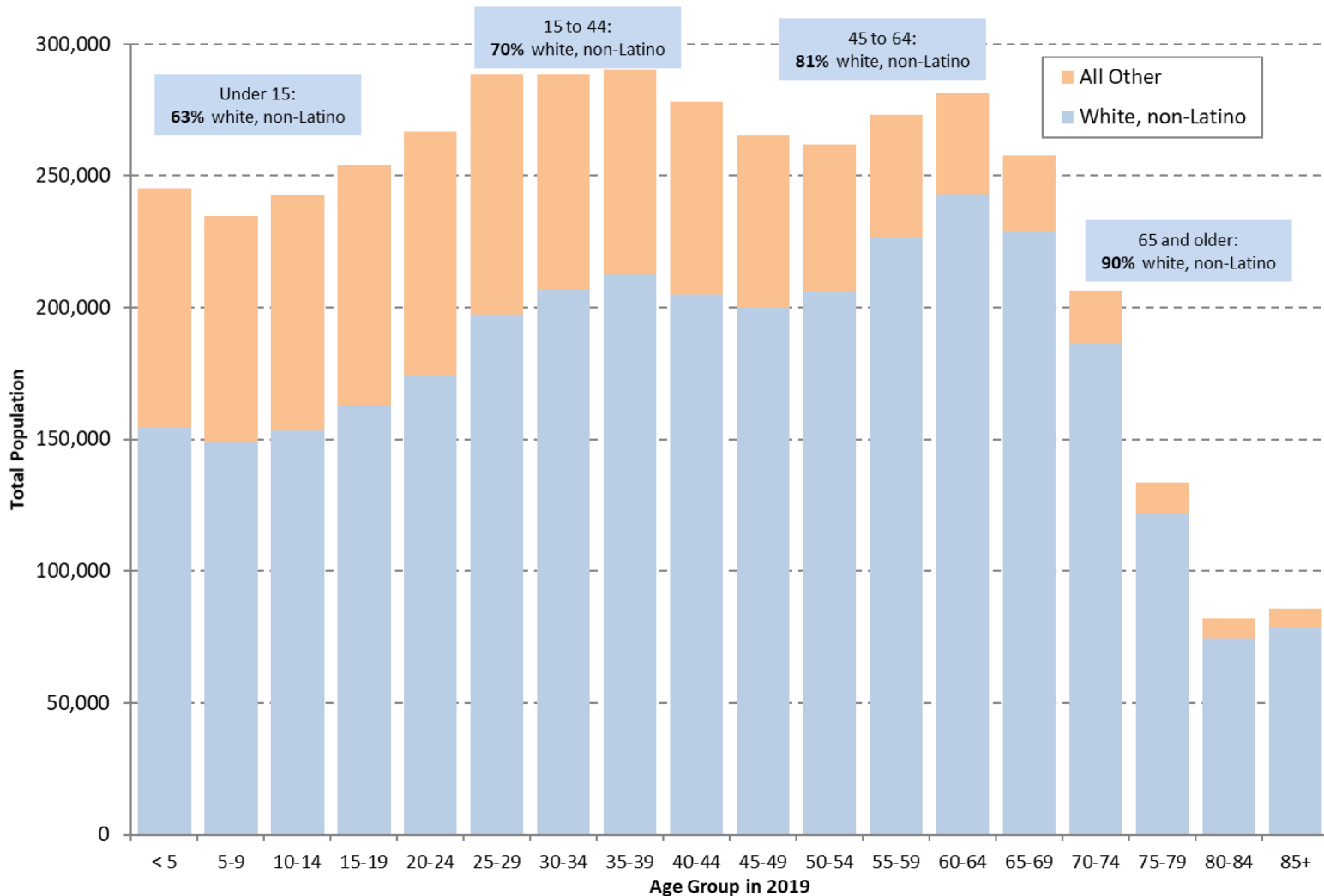
HISPANIC OR LATINO AND RACE	2000 Census	2010 Census	2019 ACS Estimate	2019 ACS MOE*
Hispanic or Latino (of any race)	8.0%	11.7%	13.4%	
Not Hispanic or Latino	92.0%	88.3%	86.6%	
White alone	83.5%	78.5%	74.9%	+/-0.1%
Black or African American alone	1.6%	1.7%	1.8%	+/-0.1%
American Indian and Alaska Native alone	1.2%	1.1%	1.0%	+/-0.1%
Asian alone	2.9%	3.6%	4.5%	+/-0.1%
Native Hawaiian and Other Pacific Islander alone	0.2%	0.3%	0.3%	+/-0.1%
Some other race alone	0.1%	0.1%	0.1%	+/-0.1%
Two or more races	2.4%	2.9%	3.9%	+/-0.2%

Race alone or in combination with one or more other races	2000 Census	2010 Census	2019 ACS Estimate	2019 ACS MOE*
Black or African American	2.1%	2.6%	3.0%	+/-0.1%
American Indian and Alaska Native	2.5%	2.9%	3.1%	+/-0.1%
Asian	3.7%	4.9%	6.2%	+/-0.1%
Native Hawaiian and Other Pacific Islander	0.5%	0.7%	0.8%	+/-0.1%
Some other race	5.2%	6.1%	4.2%	+/-0.4%

**MOE = Margin of Error at the 90% confidence level. Includes sampling error but does not incorporate errors to independent estimates used to weight survey responses.*

Source: U.S. Census Bureau, 2000 and 2010 Censuses, 2019 American Community Survey one-year estimates, Table DP05.

Population by Race/Ethnicity and Age State of Oregon, 2019



Source: U.S. Census Bureau, 2019 Population Estimates; PSU-PRC 2019 Population Estimates

2015-2019 ACS Estimates: Majority Non-White* Census Tracts

Among Oregon's 834 (2010) census tracts in the 2015-19 ACS**

- 43 have a non-white majority; another 65 are between 40% and 50% non-white.
 - The non-white majority tracts include 13 in Marion County, 12 in Multnomah County, 10 in Washington County, 2 each in Malheur and Umatilla Counties, and one each in Hood River, Jackson, Jefferson, and Klamath Counties.
 - Of the non-white majority tracts, Latinos are the largest non-white group in 34 tracts, Asians in 7 tracts, and Native Americans in 2 tracts.

* Non-white includes all persons other than white alone, not Latino.

**U.S. Census Bureau, American Community Survey 2019 5 year estimates, Table DP05. ACS estimates include sampling error; 2020 census results may differ.

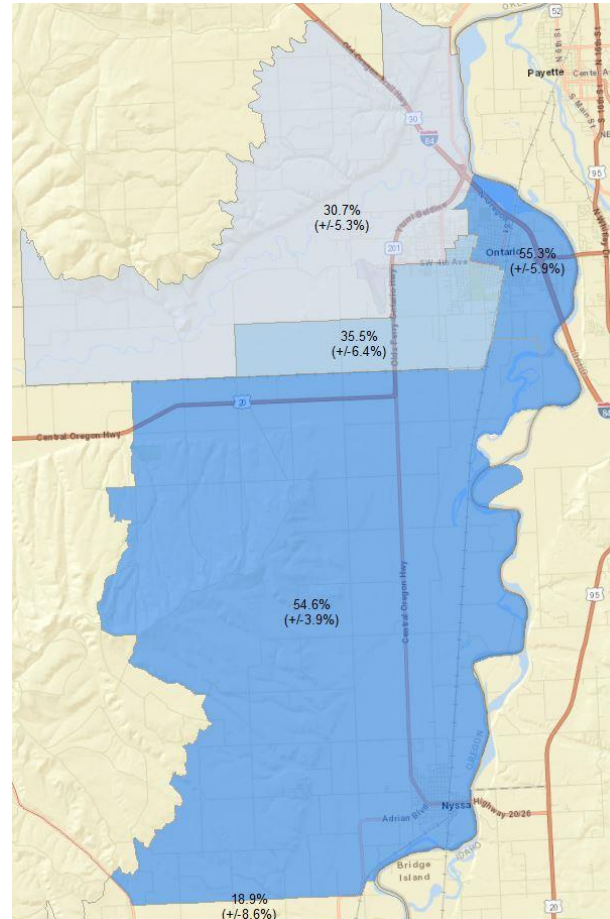
2015-2019 ACS Estimates: Census Tracts by Specific Race/Ethnicity

Among Oregon's 834 (2010) census tracts in the 2015-19 ACS*

- 12 tracts have a Hispanic majority; another 20 are between 40% and 50% Latino.
- No tracts have a Black majority; 19 tracts, all in Multnomah County are between 15% and 25% Black.
- While no tracts have an Asian majority, 3 in Washington County are over 40% Asian; 3 others in Washington County and 1 Multnomah County are between 30% and 40% Asian.
- The 4 tracts with over 20% Native American shares are associated with tribal land, including tracts with 94% (in Jefferson County), 45% (Umatilla County), 22% (Lincoln County), 20% (Klamath County)
- The ACS reports 15 tracts with Pacific Islander shares between 5% and 8%. However, estimates are less reliable for small population groups.

* U.S. Census Bureau, American Community Survey 2019 5 year estimates, Table DP05. ACS estimates include sampling error; 2020 census results may differ.

Latino Majority Tracts: Ontario-Nyssa



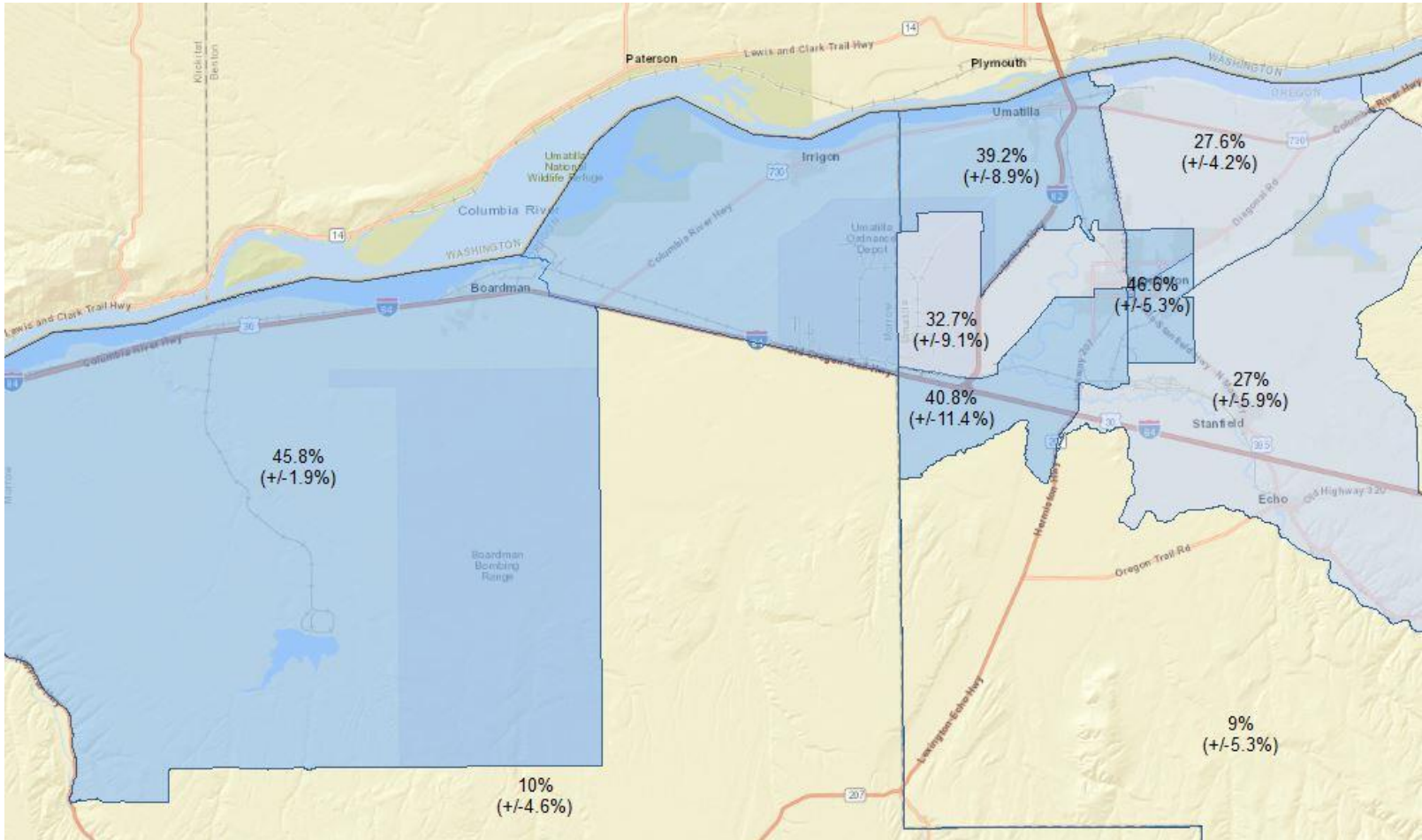
* U.S. Census Bureau, American Community Survey 2019 5 year estimates, Table DP05. ACS estimates include sampling error; 2020 census results may differ.

Latino Majority Tracts: Milton-Freewater



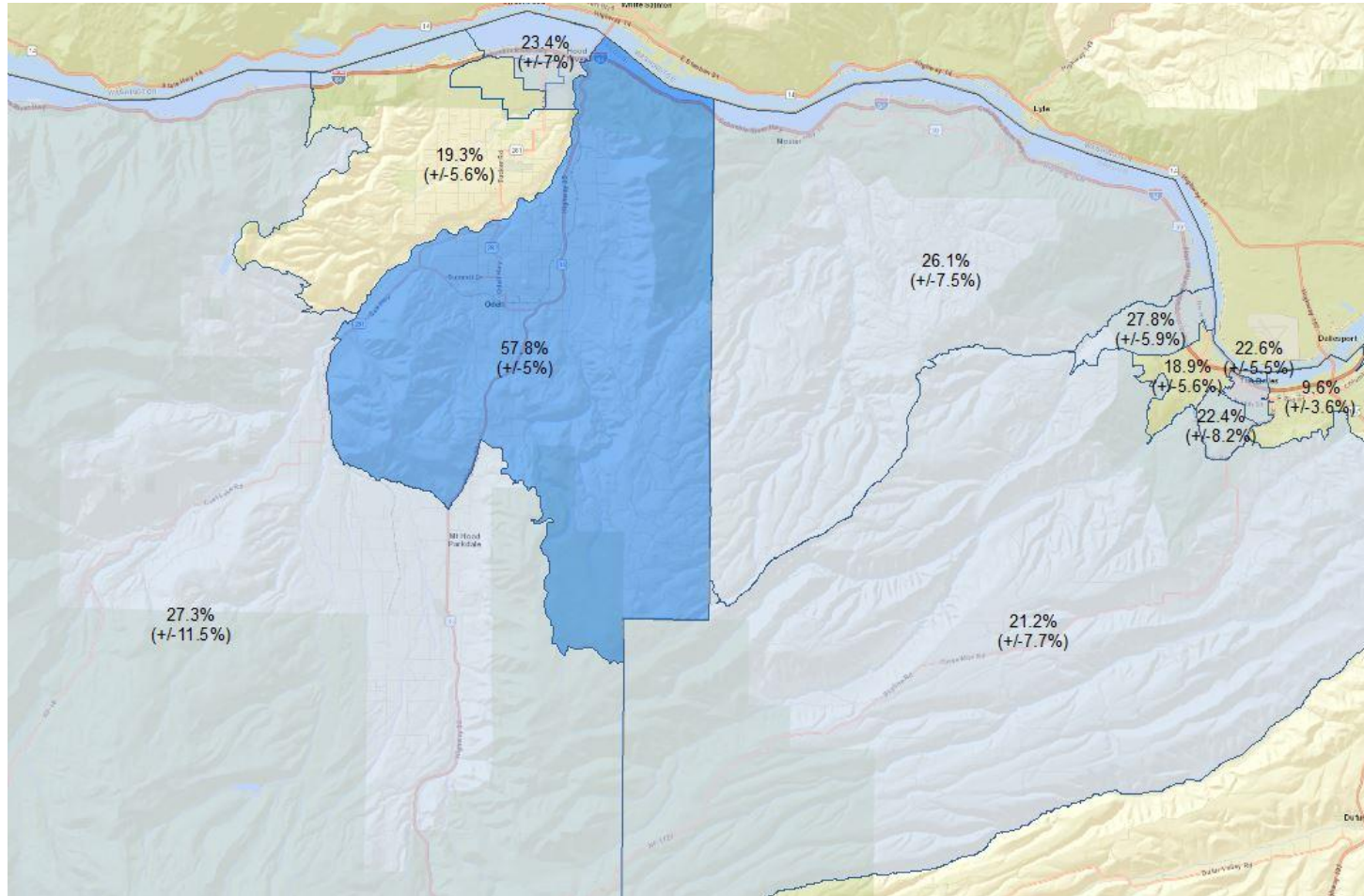
* U.S. Census Bureau, American Community Survey 2019 5 year estimates, Table DP05. ACS estimates include sampling error; 2020 census results may differ.

Latino 40%+ Tracts: Columbia Basin



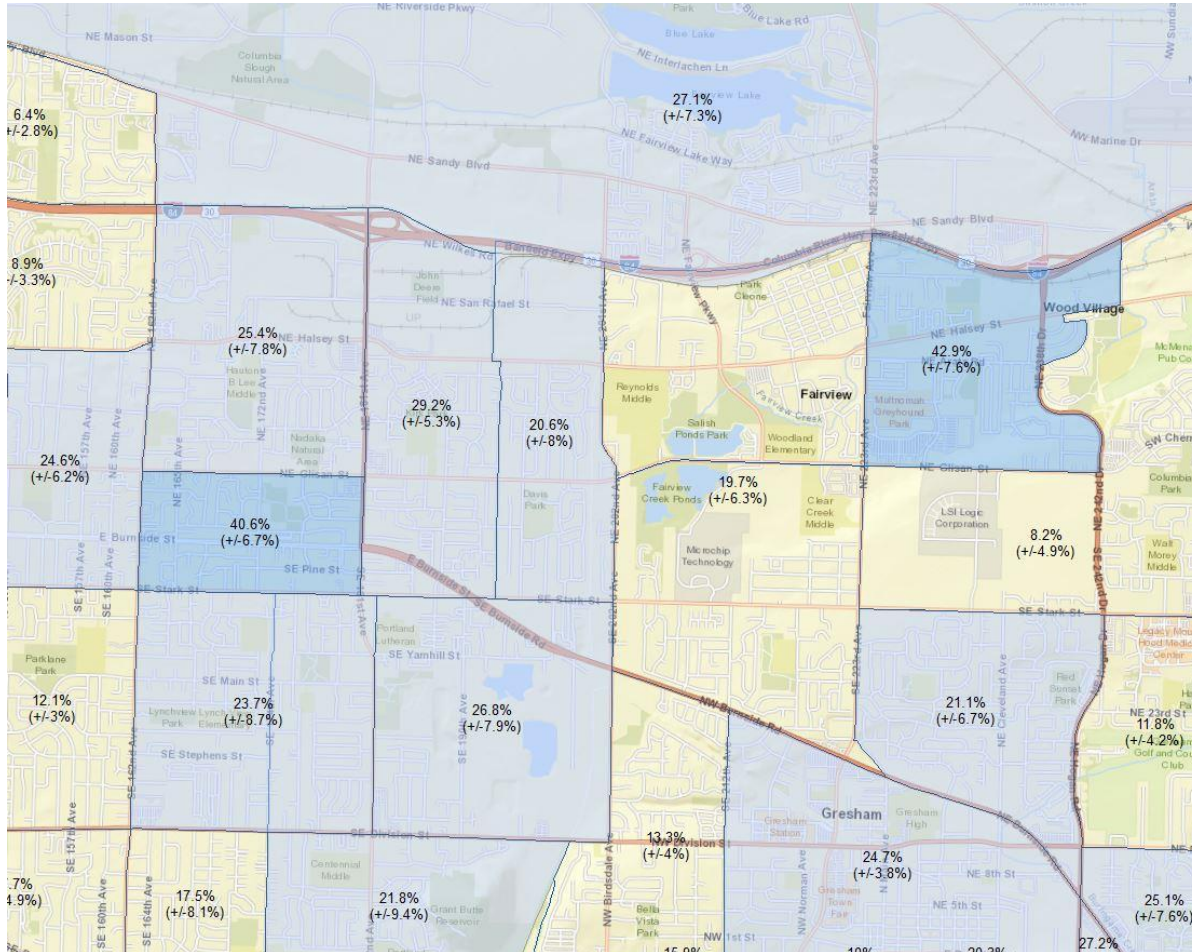
* U.S. Census Bureau, American Community Survey 2019 5 year estimates, Table DP05. ACS estimates include sampling error; 2020 census results may differ.

Latino Majority Tracts: Columbia Gorge



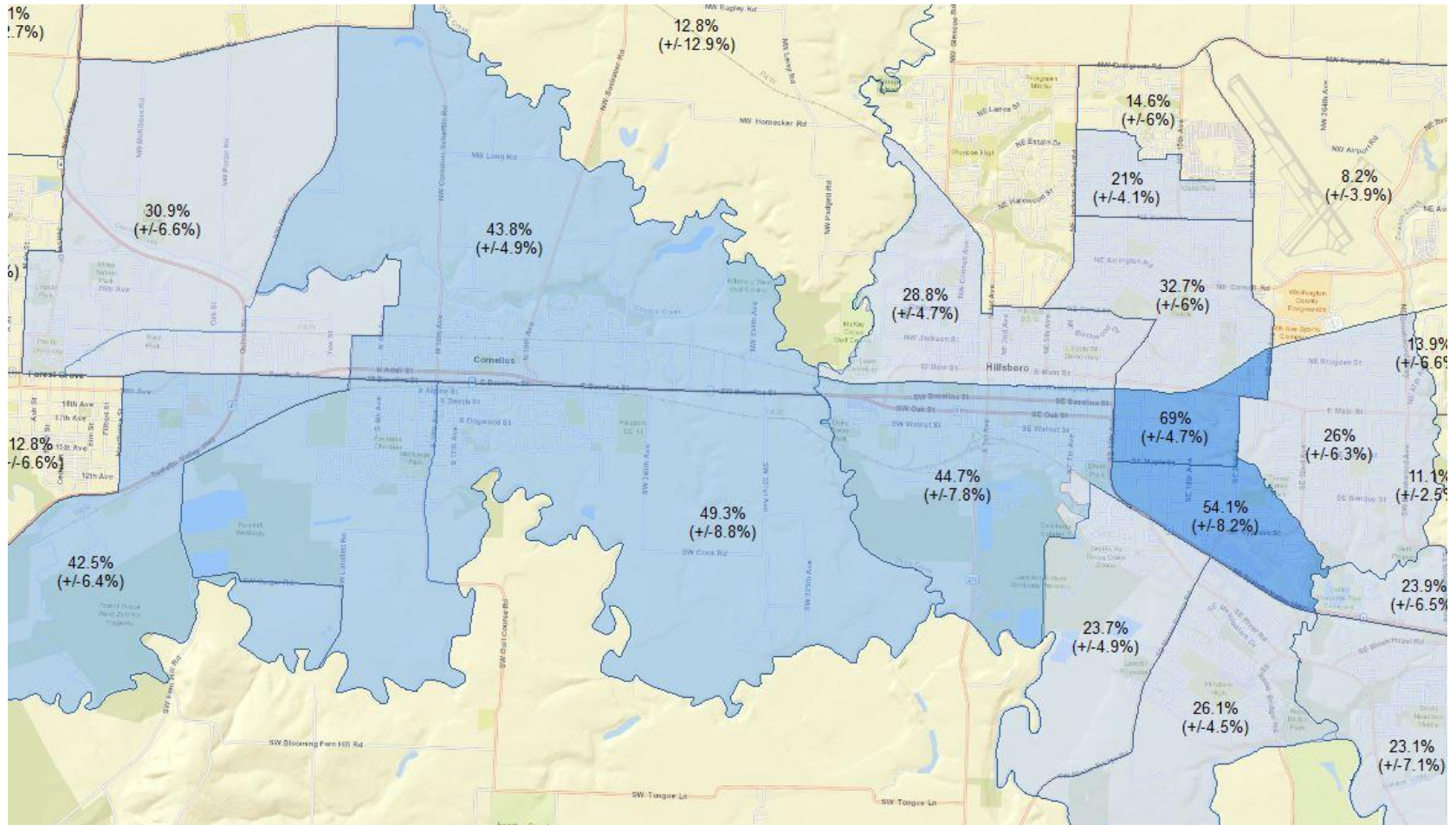
* U.S. Census Bureau, American Community Survey 2019 5 year estimates, Table DP05. ACS estimates include sampling error; 2020 census results may differ.

Latino 40%+ Tracts: East Multnomah



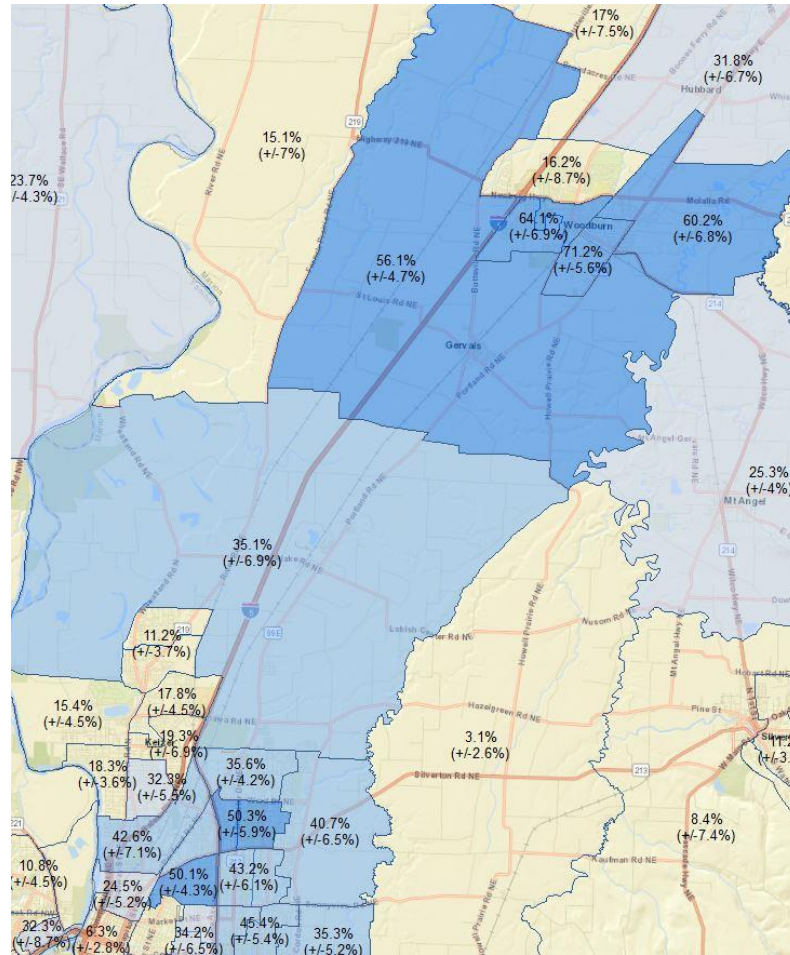
* U.S. Census Bureau, American Community Survey 2019 5 year estimates, Table DP05. ACS estimates include sampling error; 2020 census results may differ.

Latino Majority Tracts: Tualatin Valley



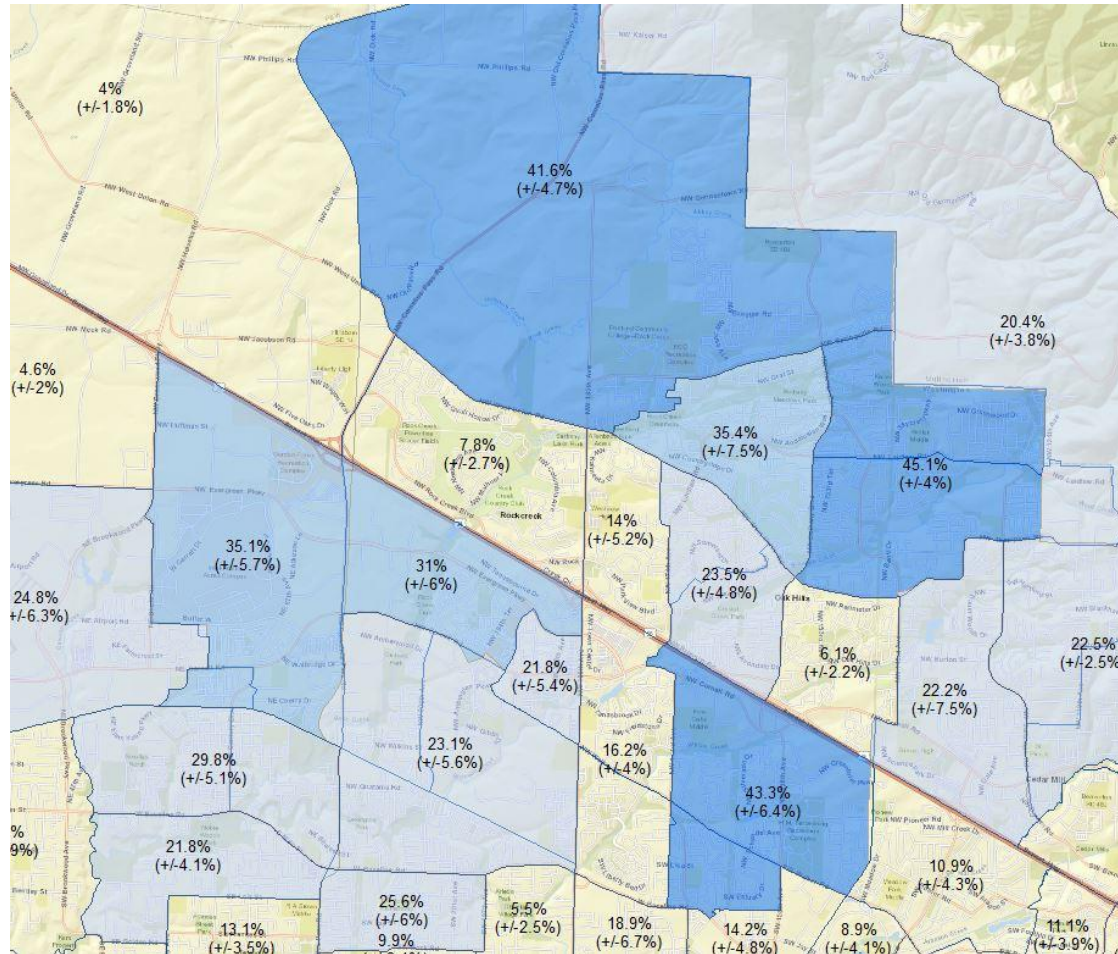
* U.S. Census Bureau, American Community Survey 2019 5 year estimates, Table DP05. ACS estimates include sampling error; 2020 census results may differ.

Latino Majority Tracts: Marion County



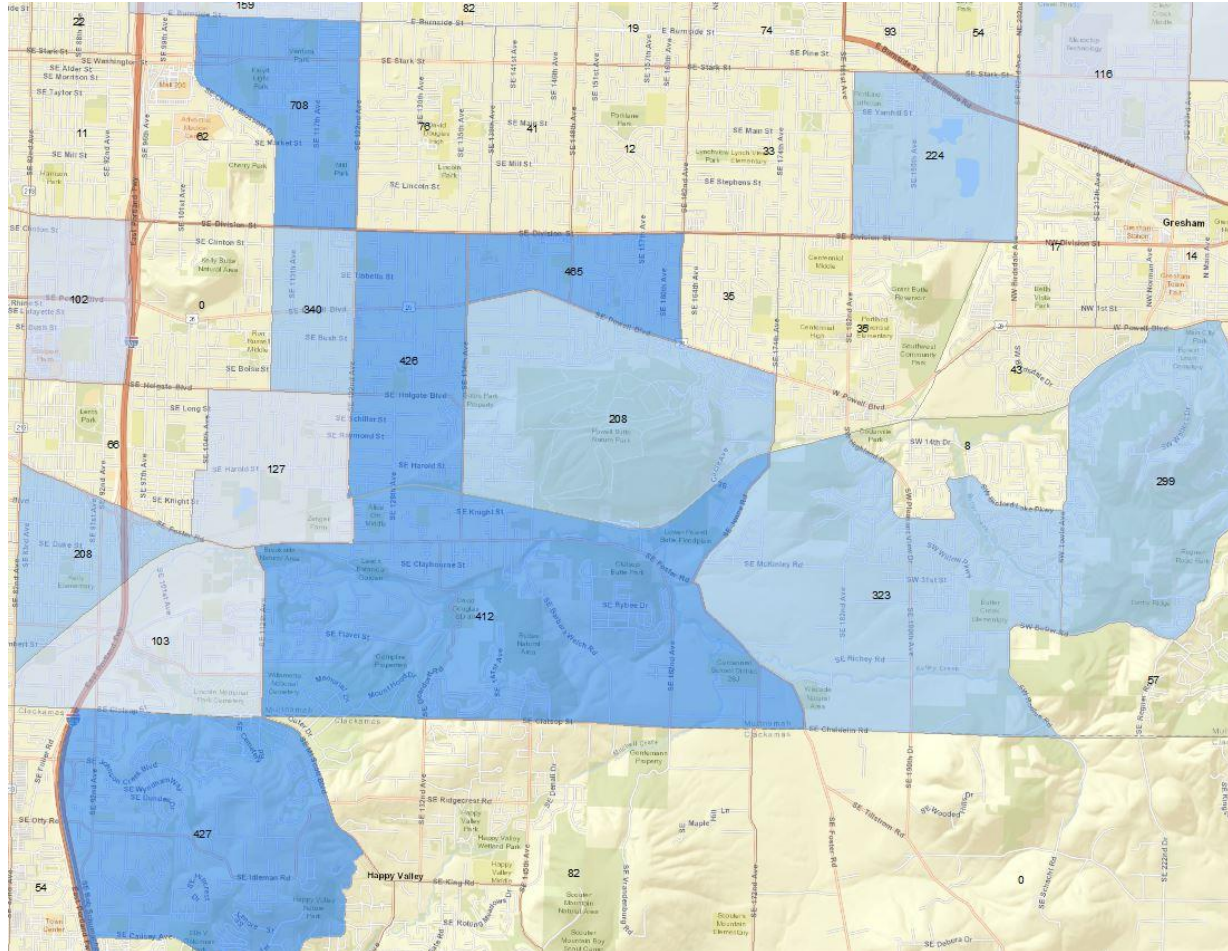
* U.S. Census Bureau, American Community Survey 2019 5 year estimates, Table DP05. ACS estimates include sampling error; 2020 census results may differ.

Asian 40%+ Tracts: Washington County



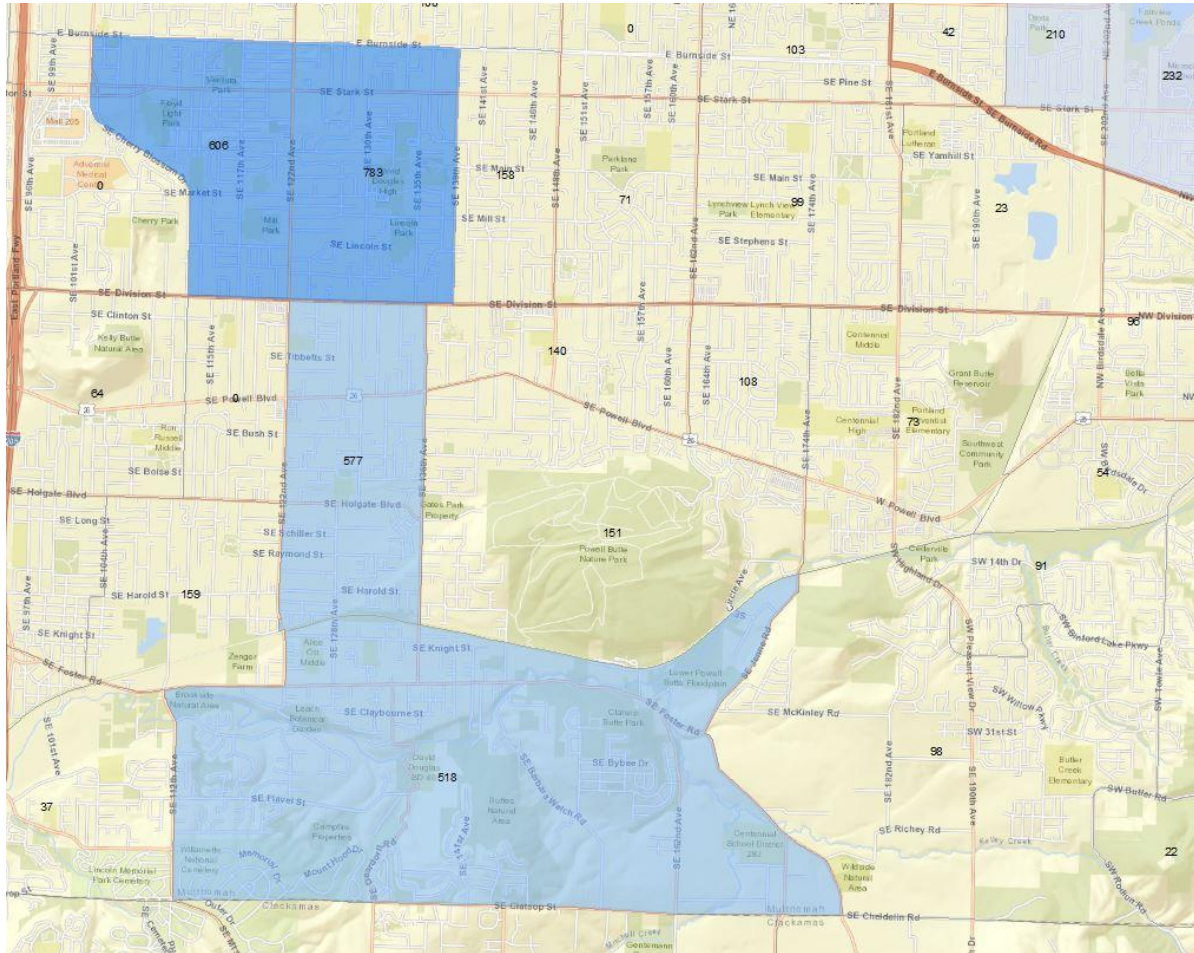
* U.S. Census Bureau, American Community Survey 2019 5 year estimates, Table DP05. ACS estimates include sampling error; 2020 census results may differ.

Ukrainian Ancestry: East Portland and Clackamas



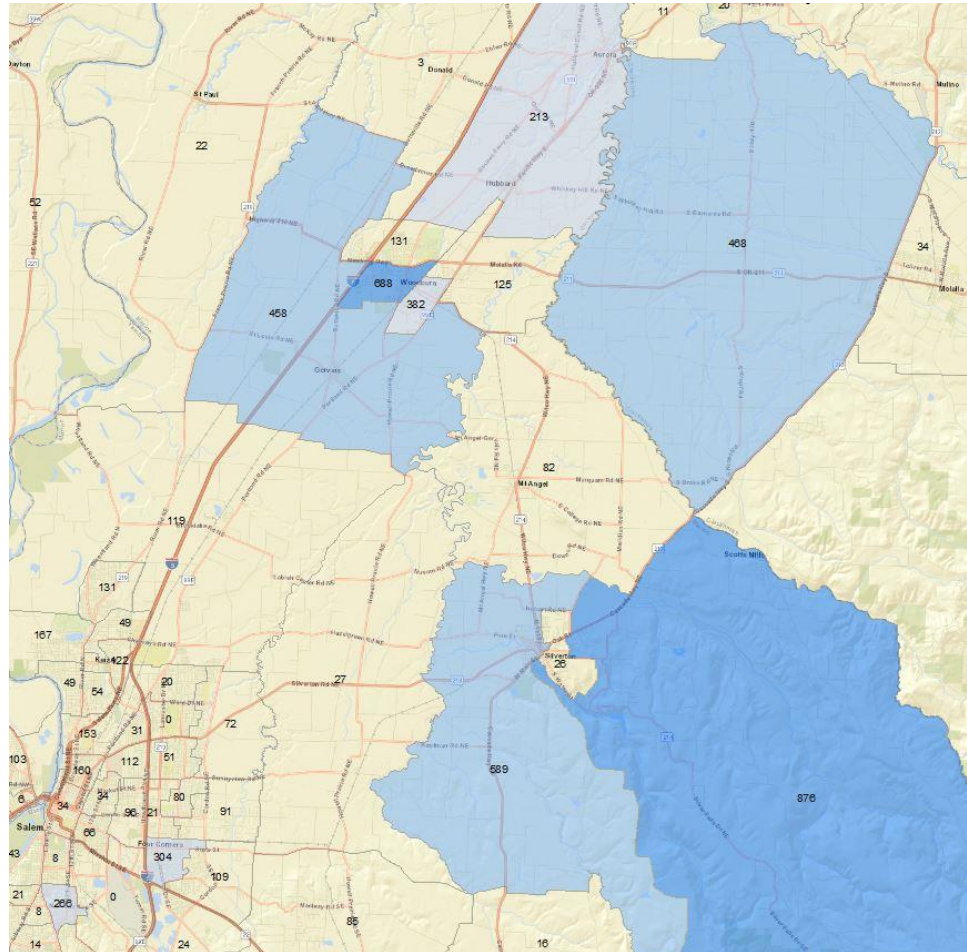
* U.S. Census Bureau, American Community Survey 2019 5 year estimates, Table B04006. ACS estimates include sampling error; 2020 census results may differ.

Russian Ancestry: East Portland



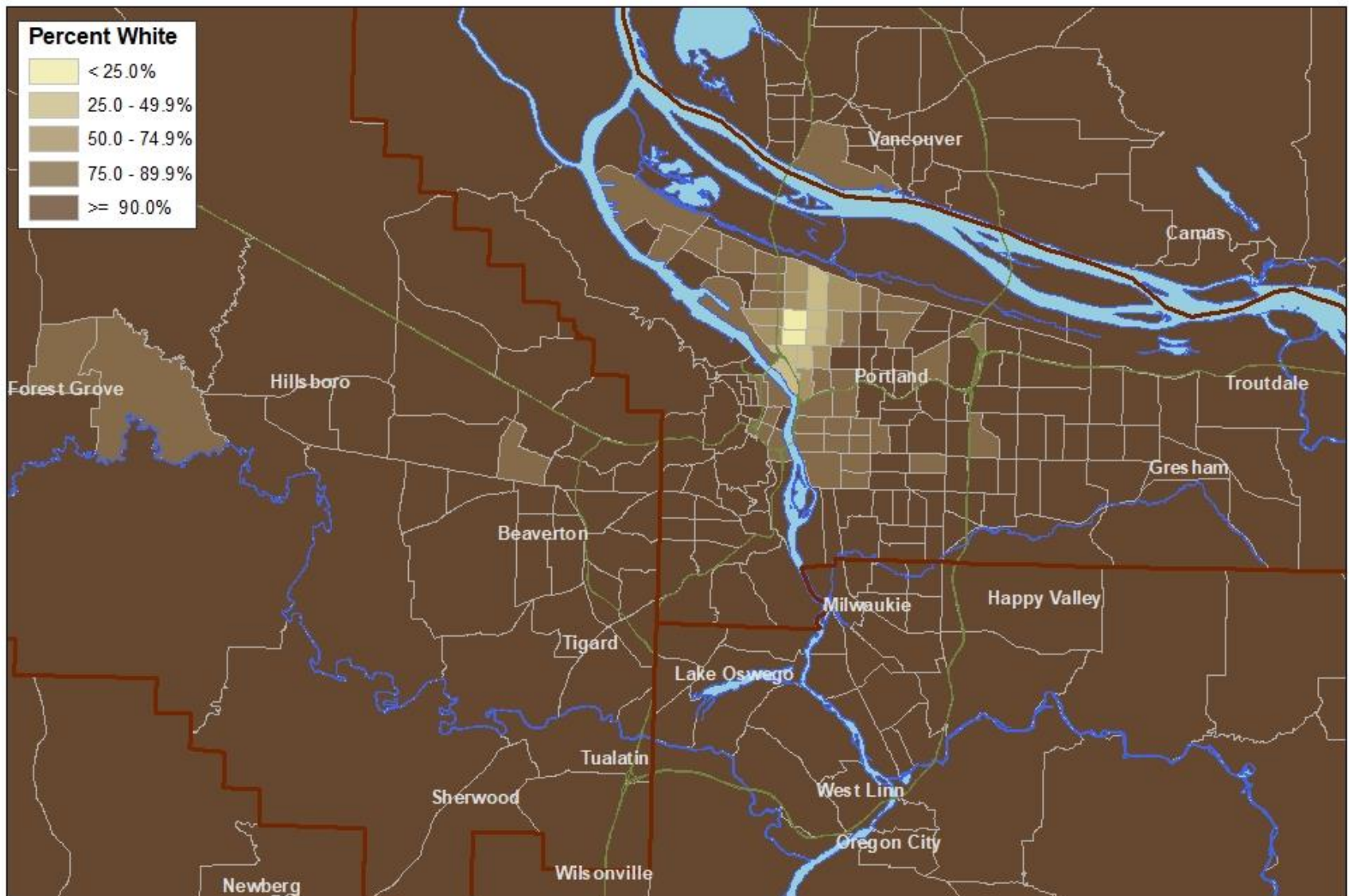
* U.S. Census Bureau, American Community Survey 2019 5 year estimates, Table B04006. ACS estimates include sampling error; 2020 census results may differ.

Russian Ancestry: Marion County

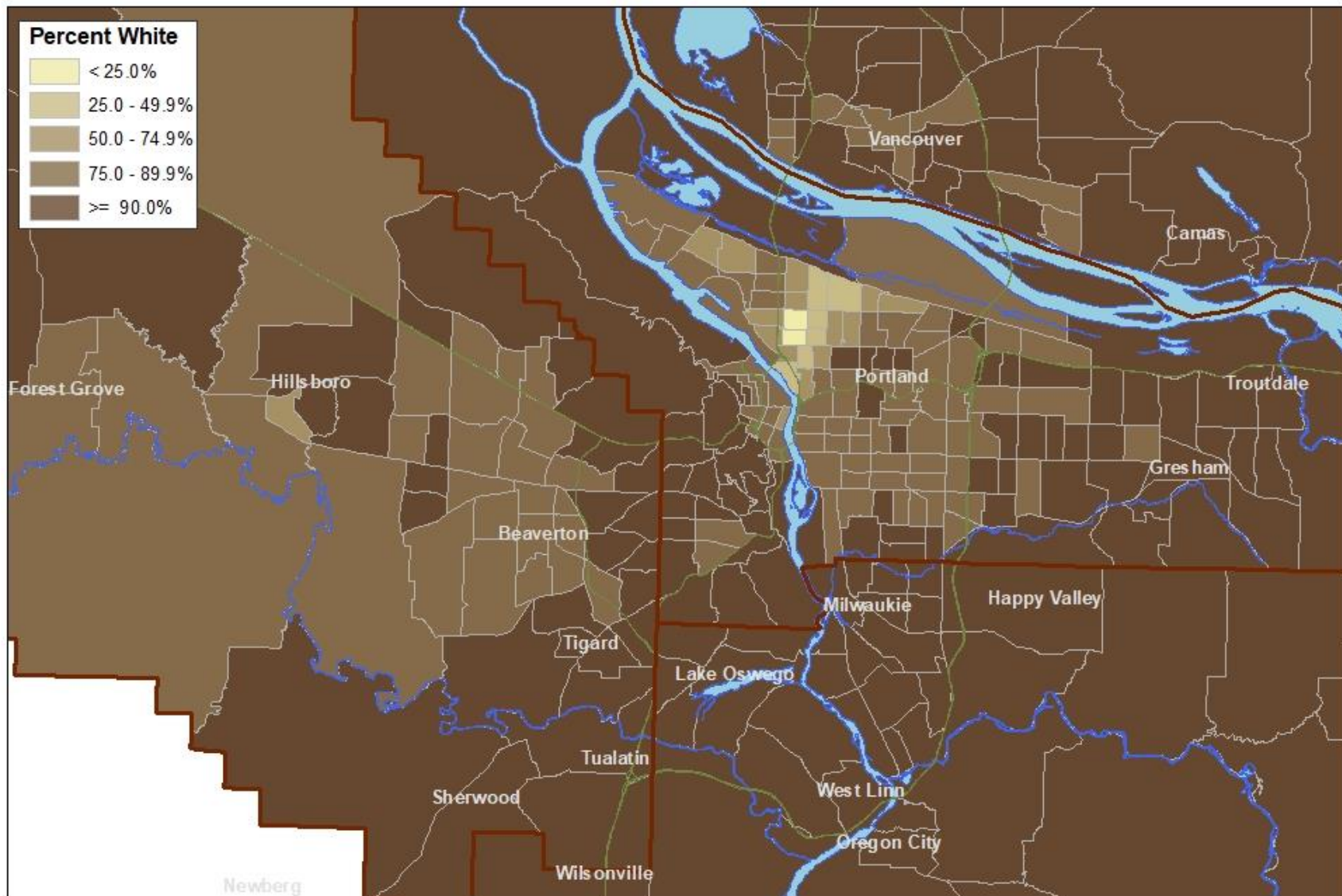


* U.S. Census Bureau, American Community Survey 2019 5 year estimates, Table B04006. ACS estimates include sampling error; 2020 census results may differ.

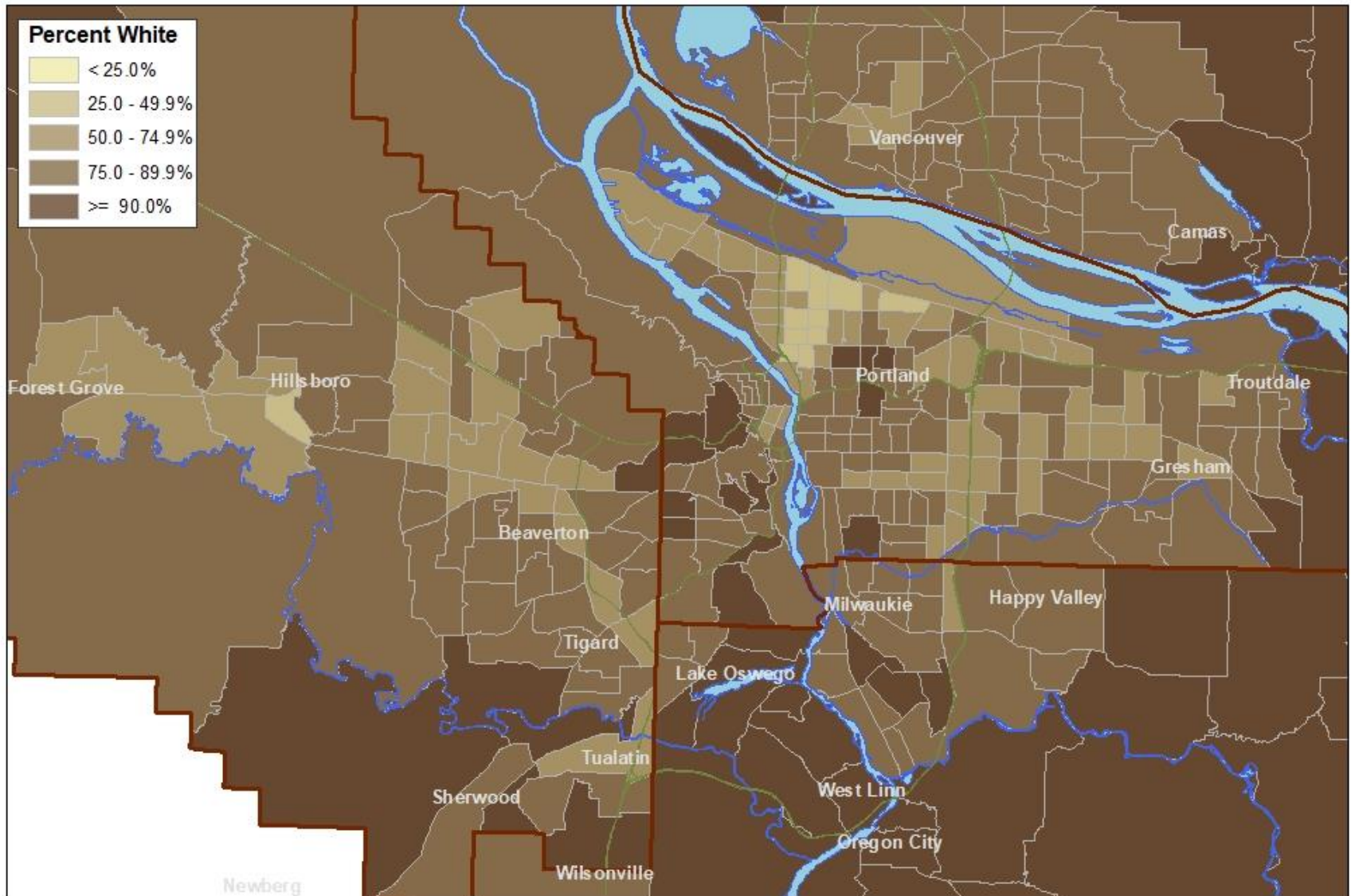
White, non-Latino Population Share by Census Tract, 1980



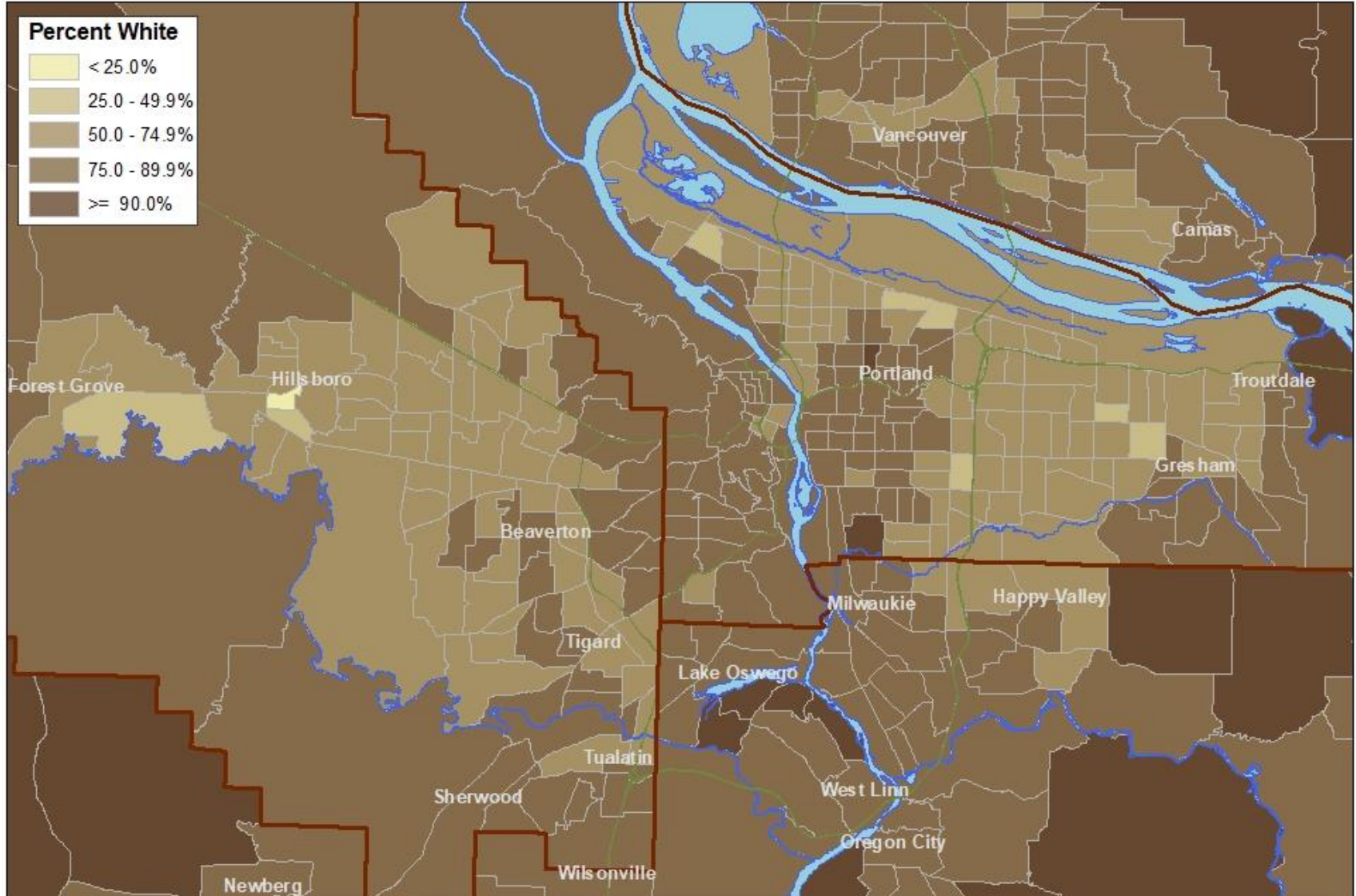
White, non-Latino Population Share by Census Tract, 1990



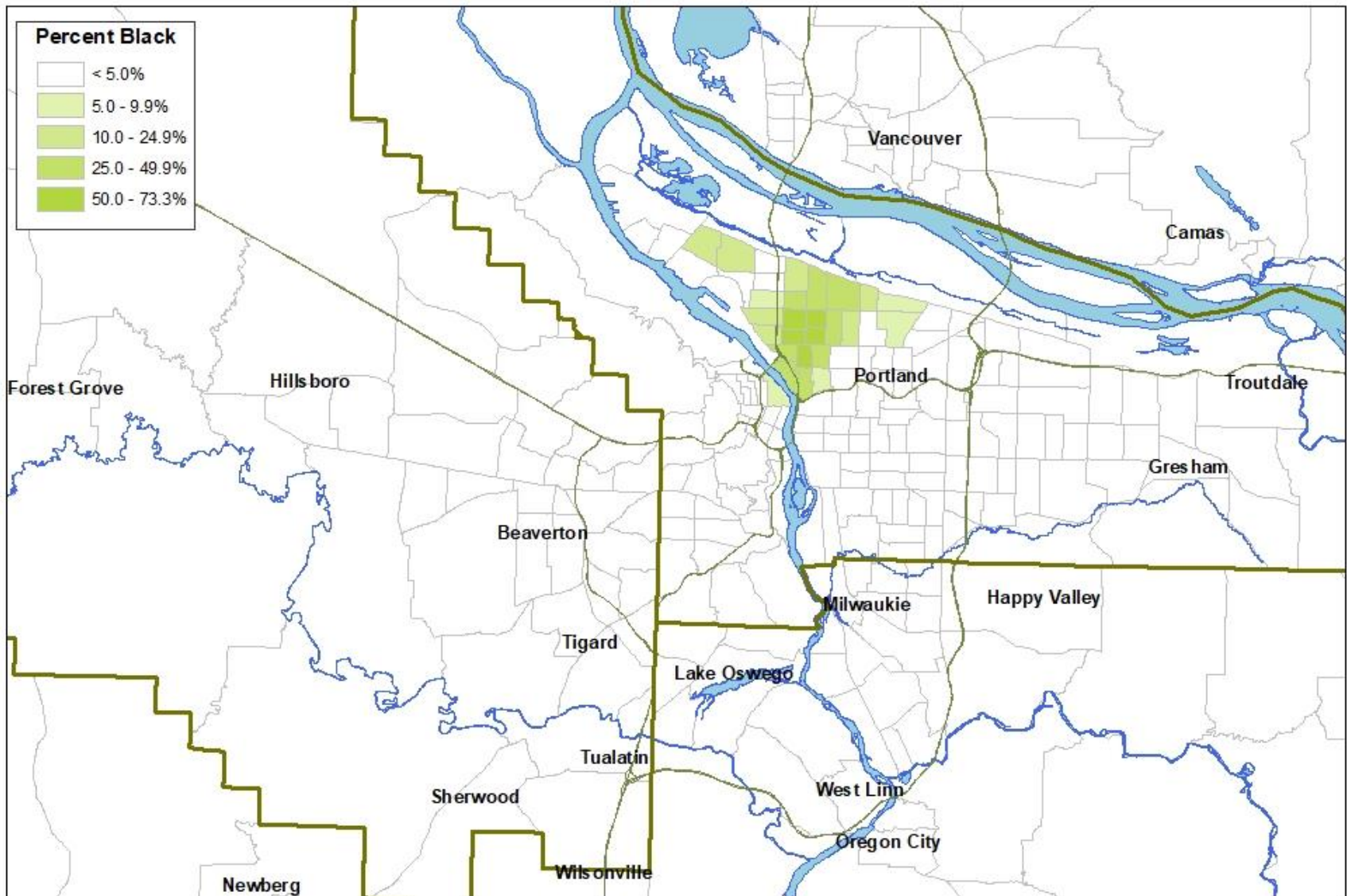
White, non-Latino Population Share by Census Tract, 2000



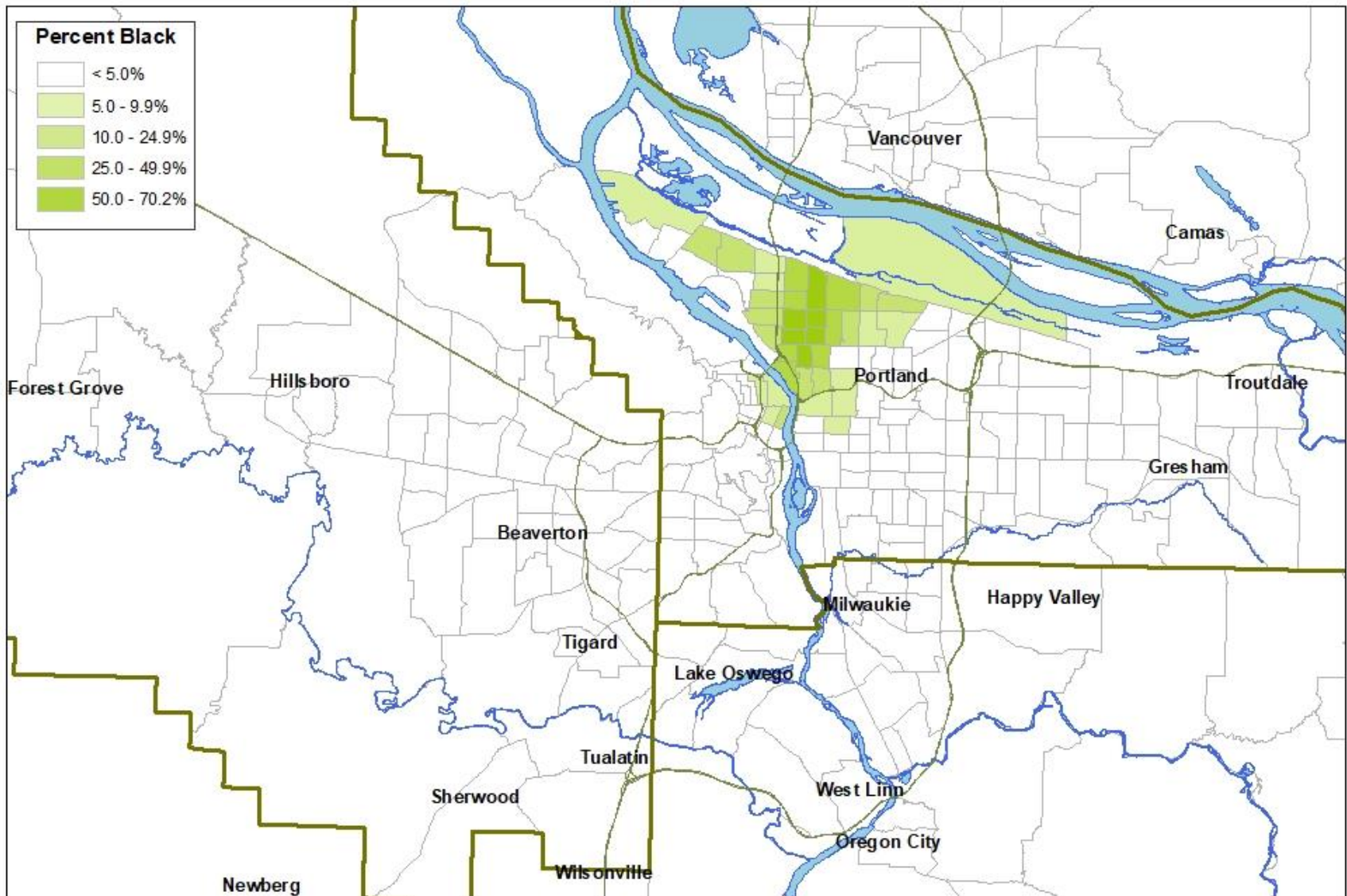
White, non-Latino Population Share by Census Tract, 2010



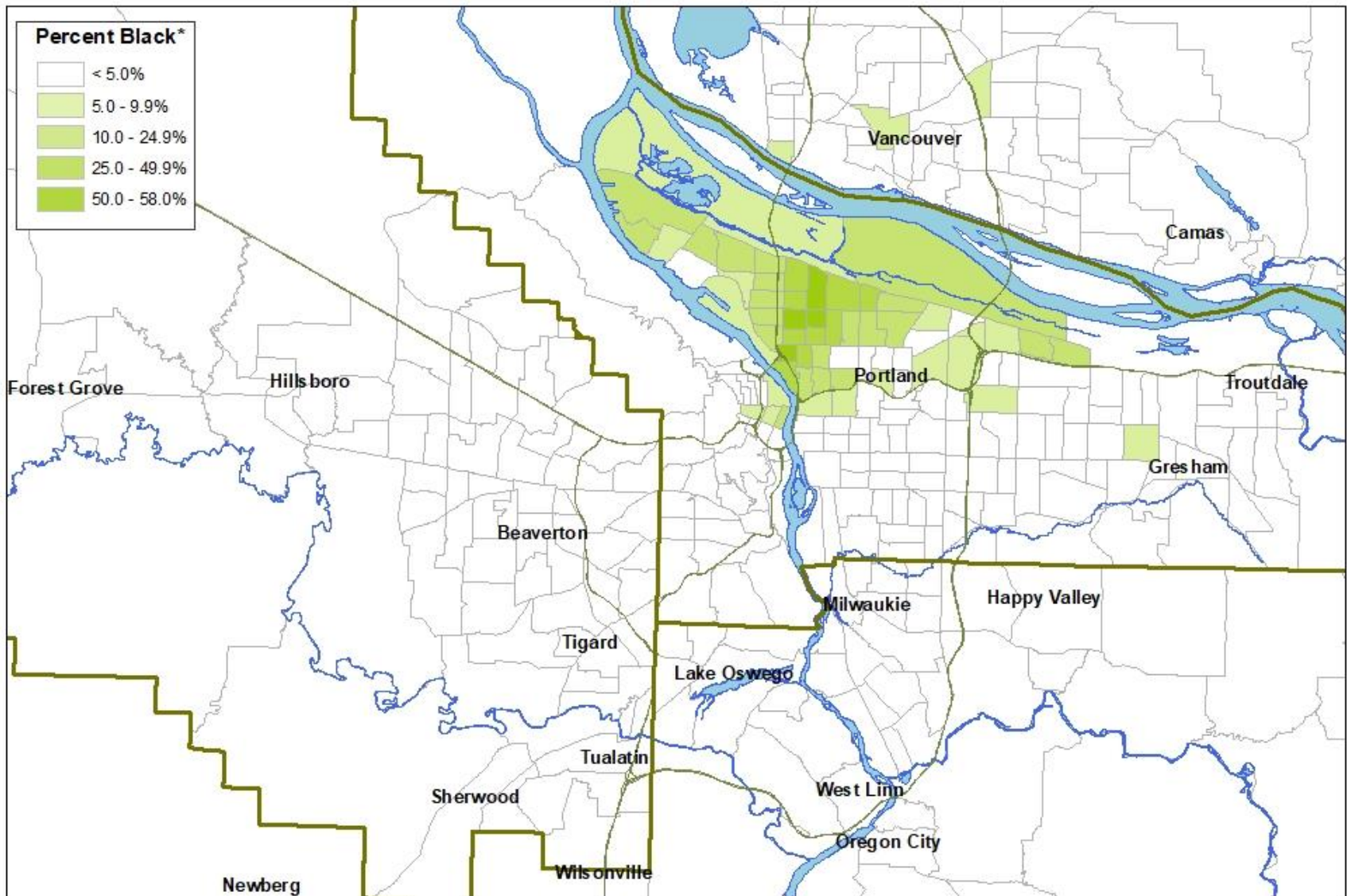
Black Population Share by Census Tract, 1980



Black Population Share by Census Tract, 1990



Black Population Share by Census Tract, 2000

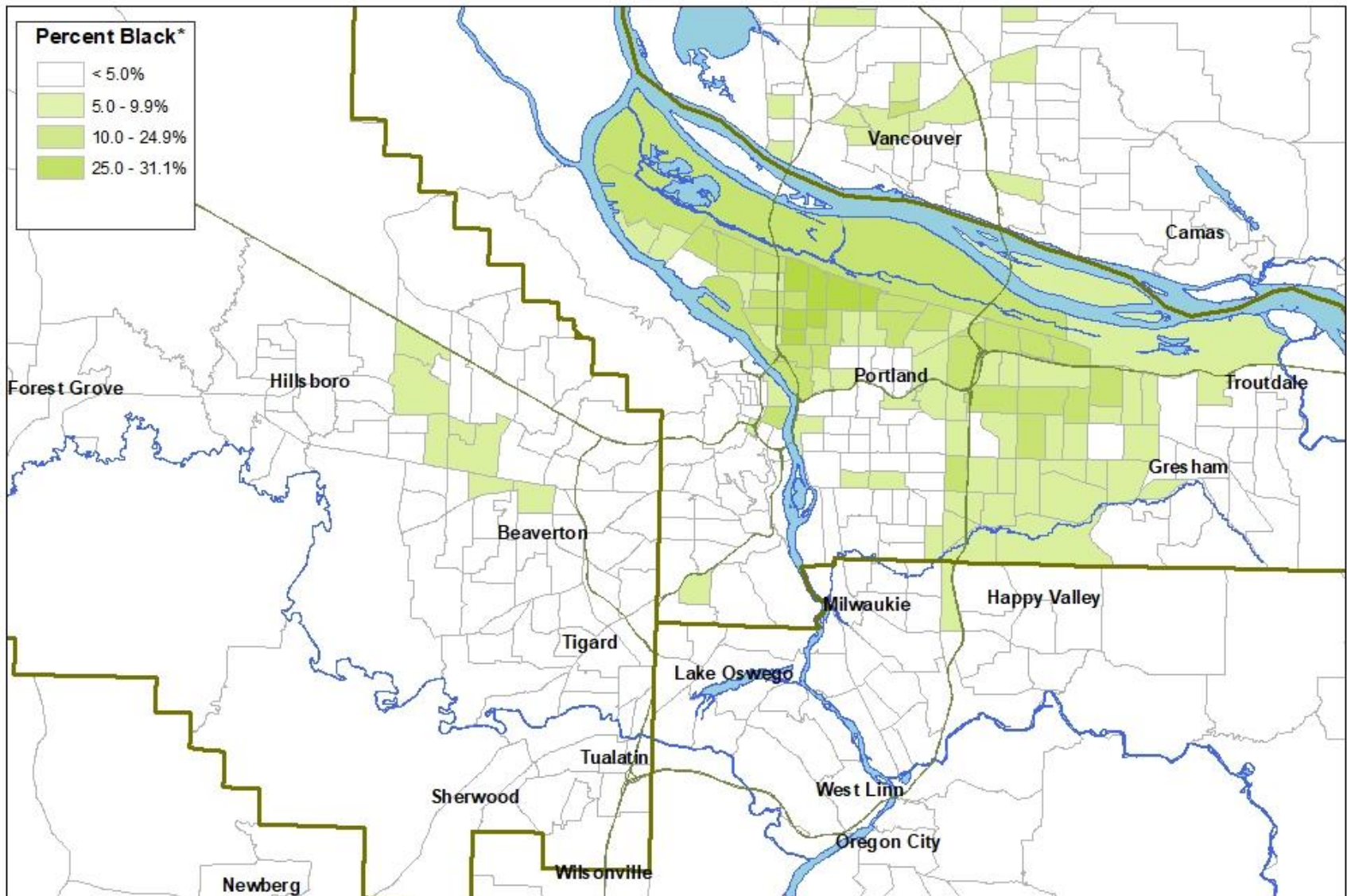


* "Black or African-American alone or in combination with other races"

Sources: U.S. Census Bureau, TIGER 2010; Metro RLIS.
Prepared by Population Research Center, Portland State University

www.pdx.edu/prc

Black Population Share by Census Tract, 2010

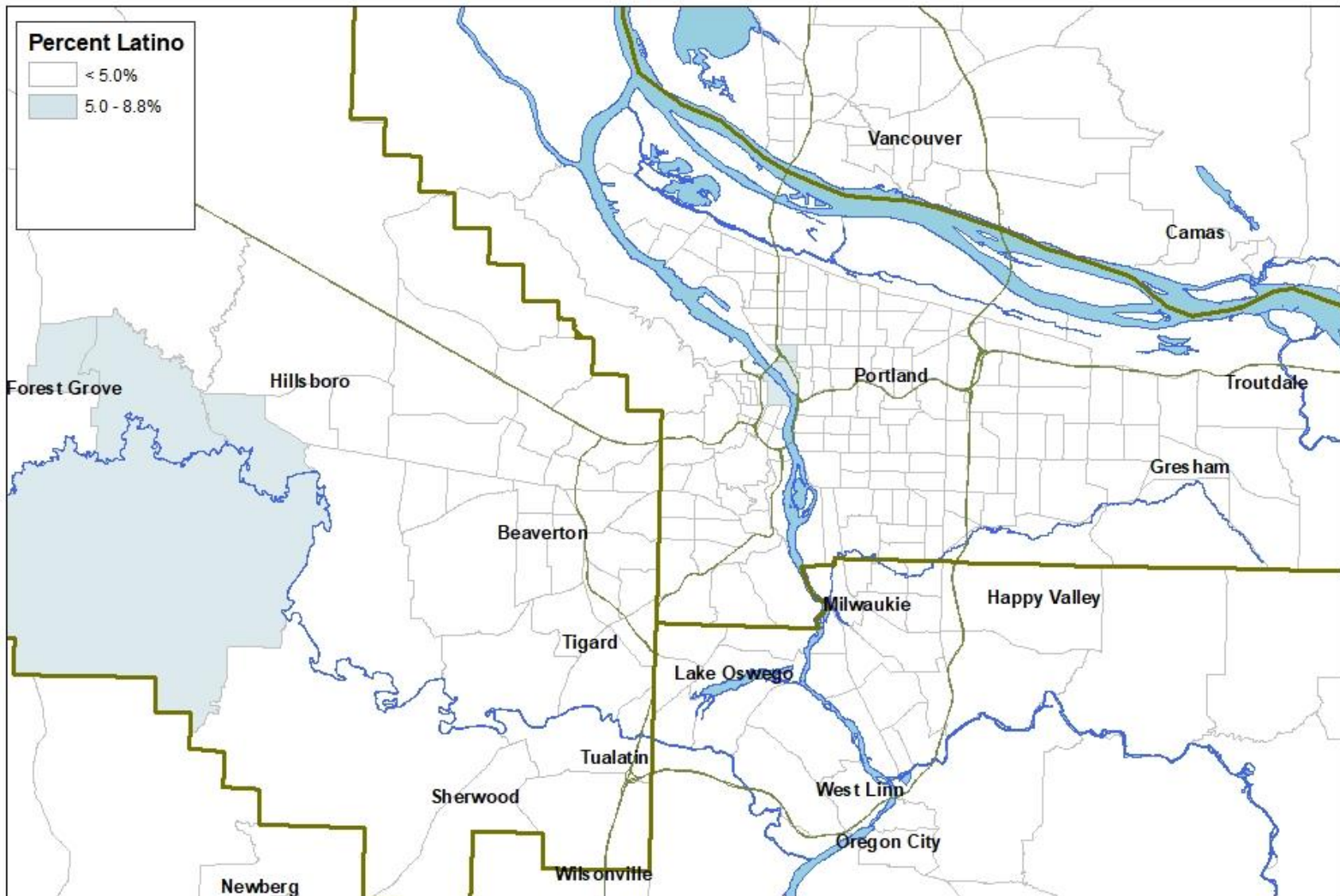


* "Black or African-American alone or in combination with other races"

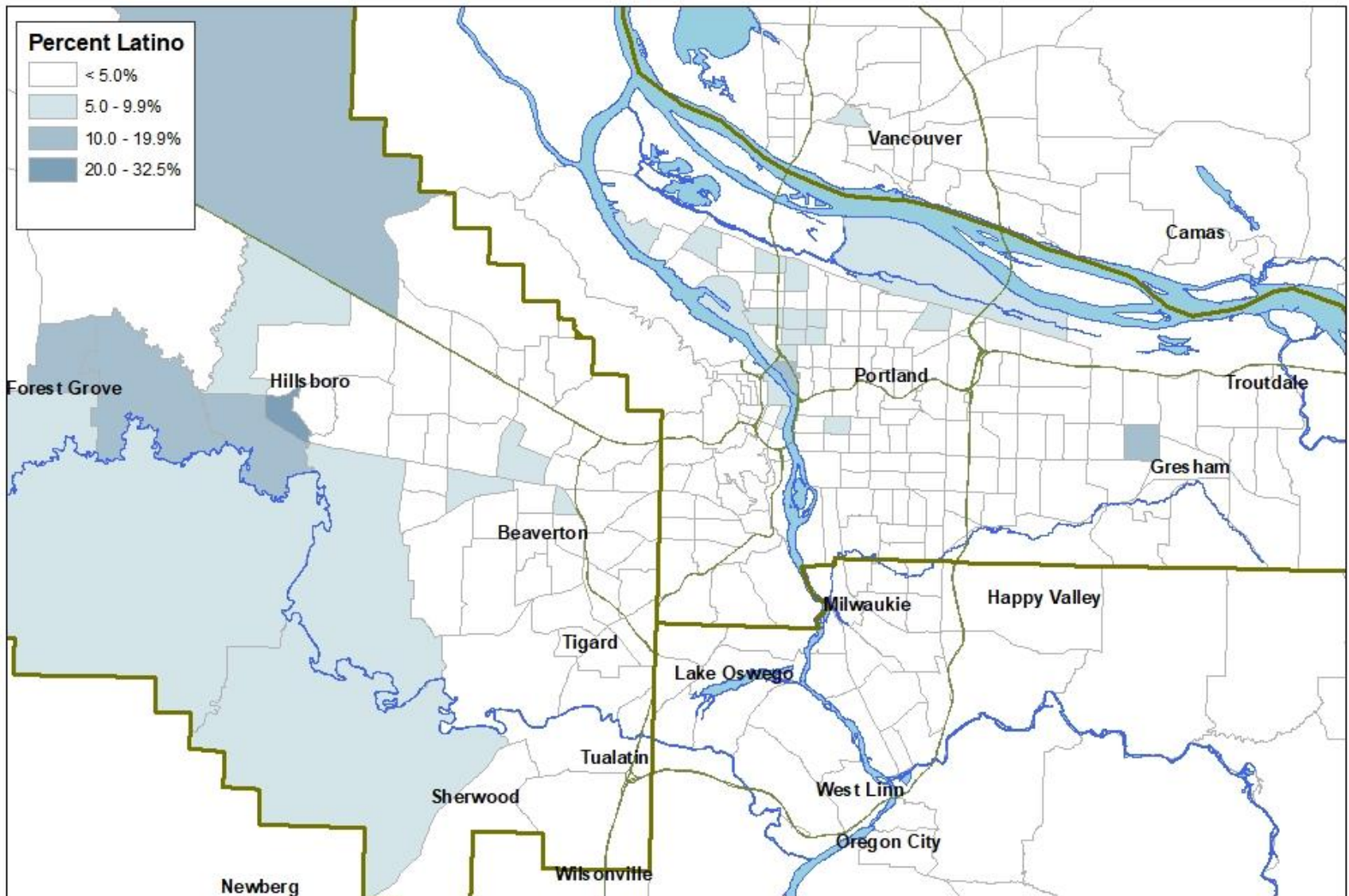
Sources: U.S. Census Bureau, TIGER 2010; Metro RLIS.
Prepared by Population Research Center, Portland State University

www.pdx.edu/prc

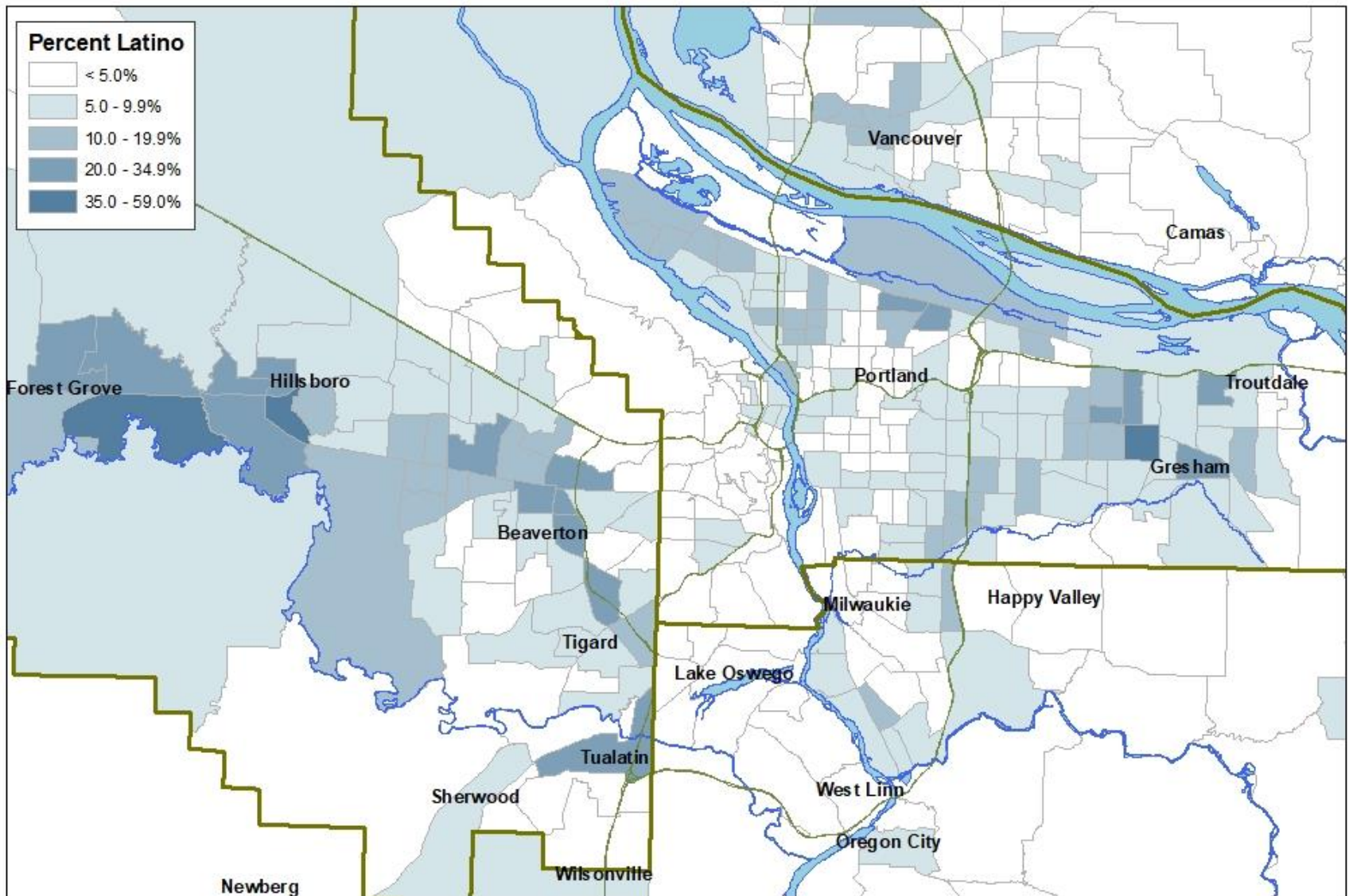
Latino Population Share by Census Tract, 1980



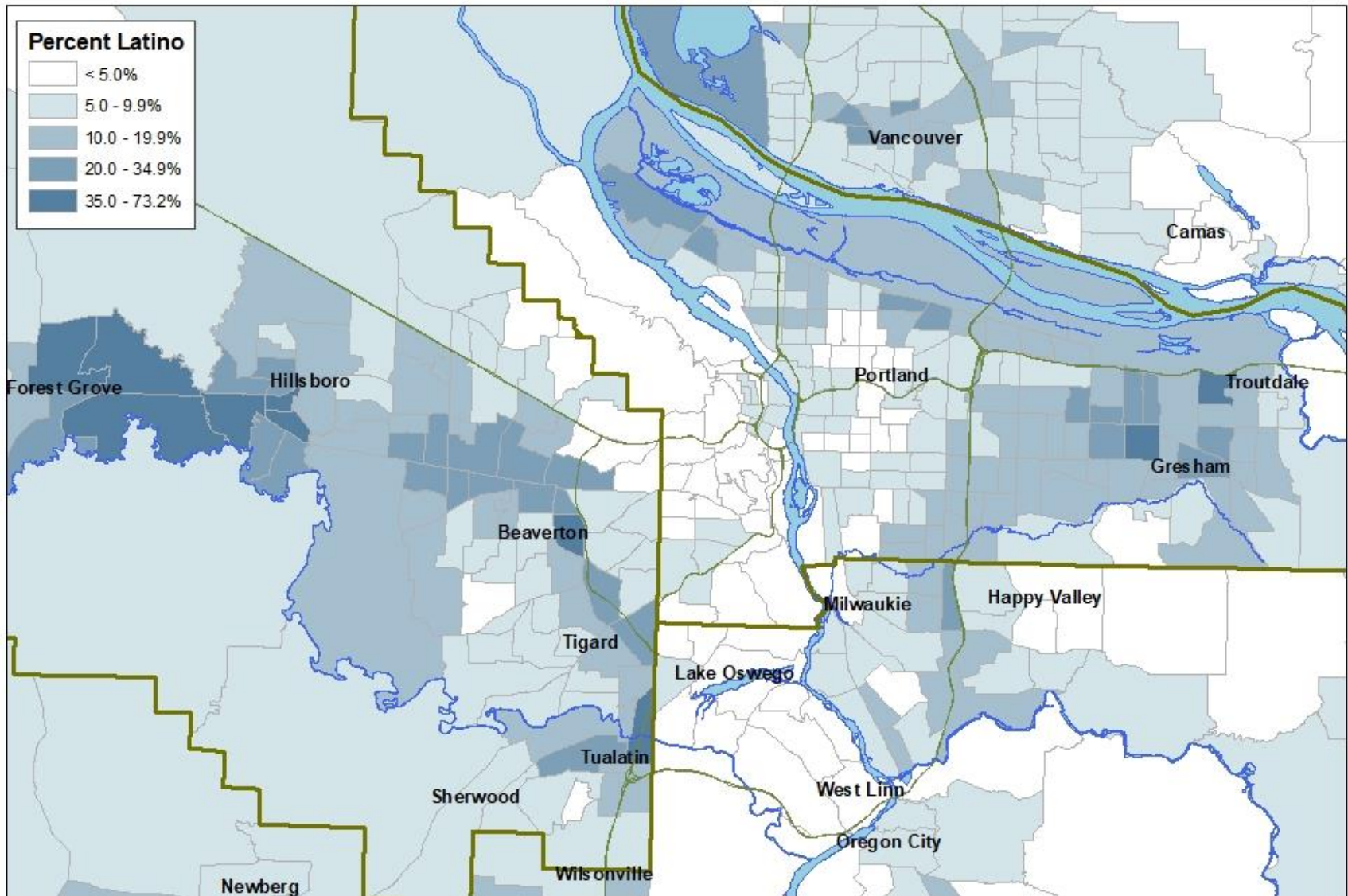
Latino Population Share by Census Tract, 1990



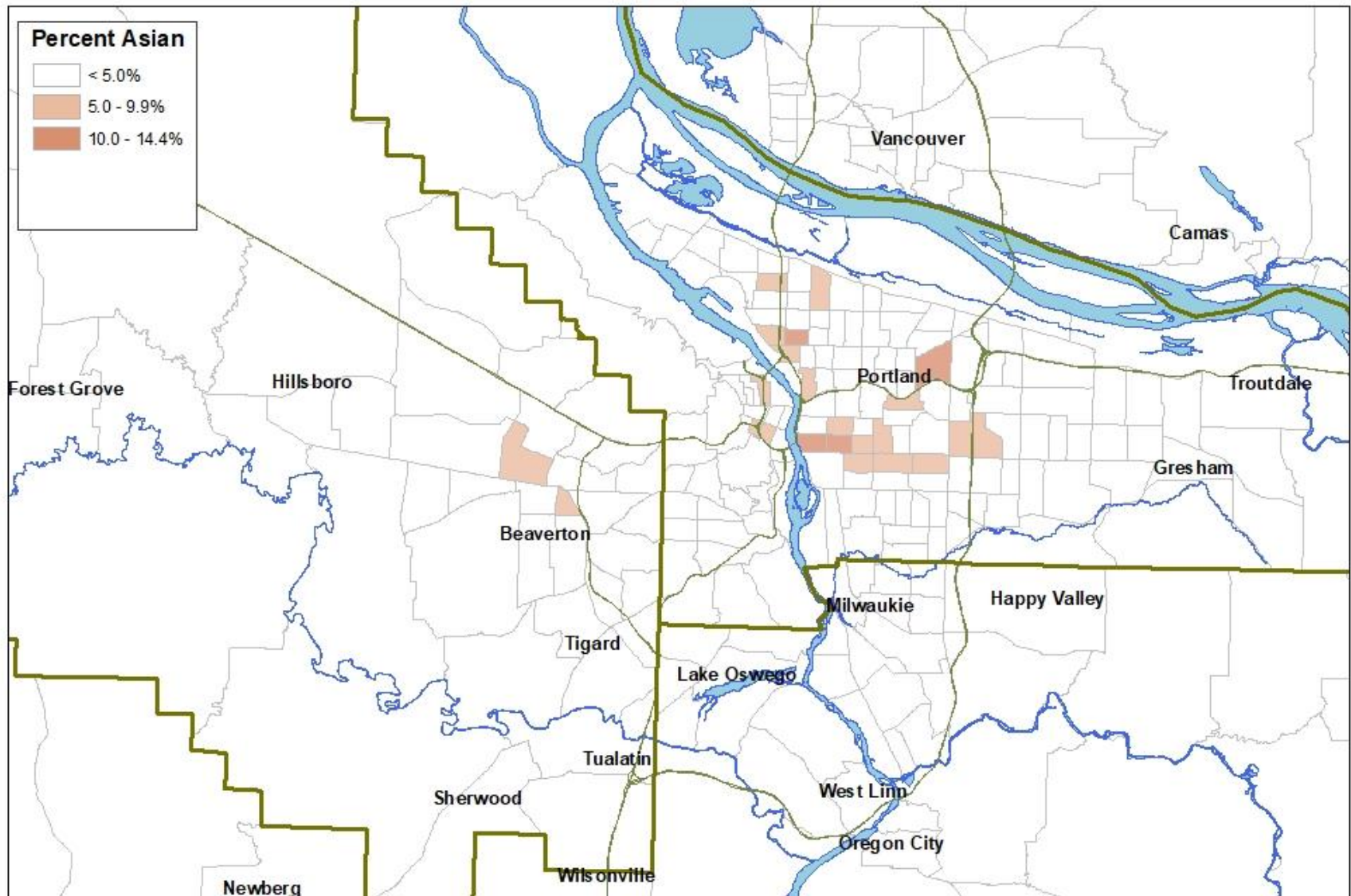
Latino Population Share by Census Tract, 2000



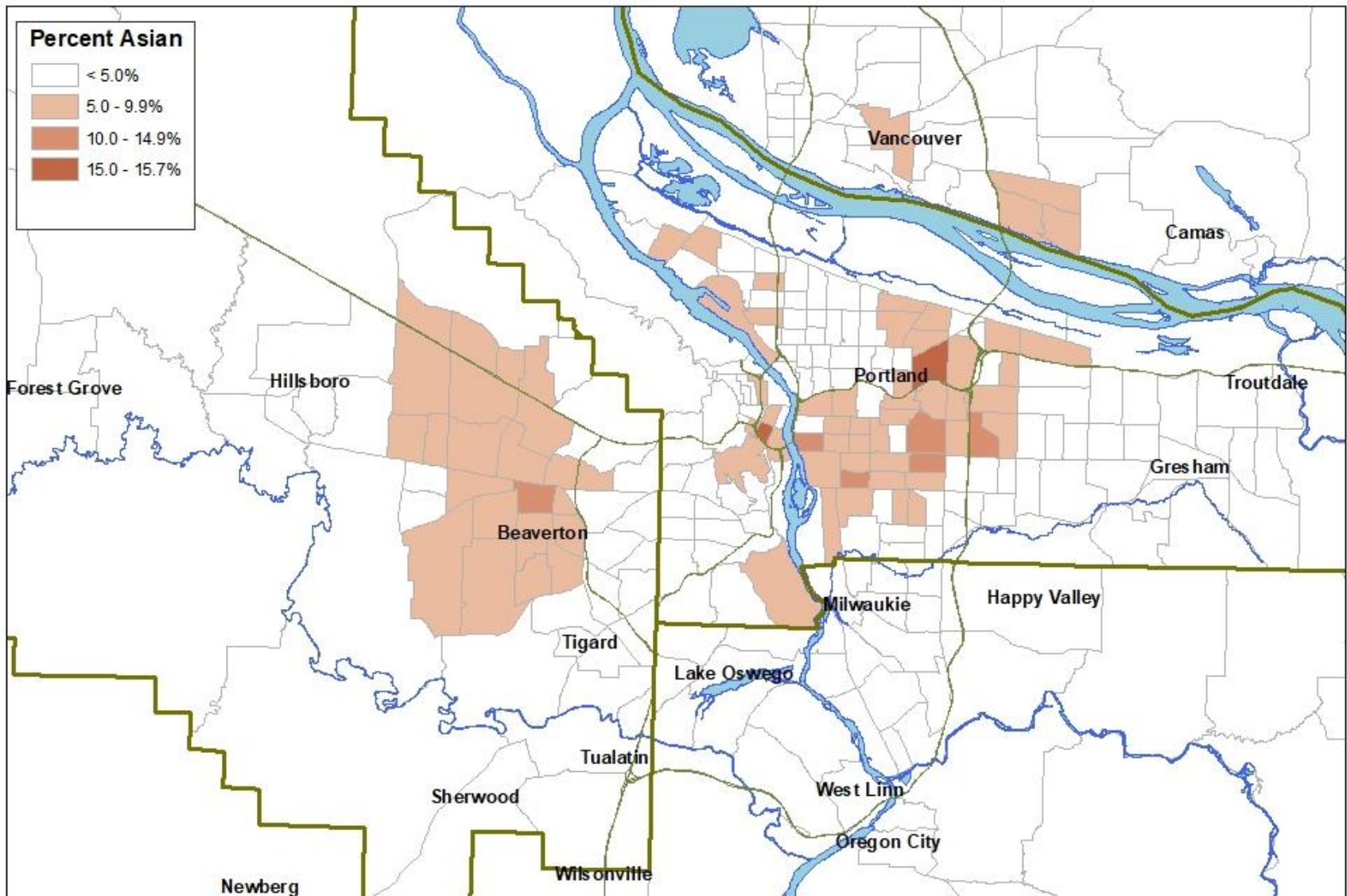
Latino Population Share by Census Tract, 2010



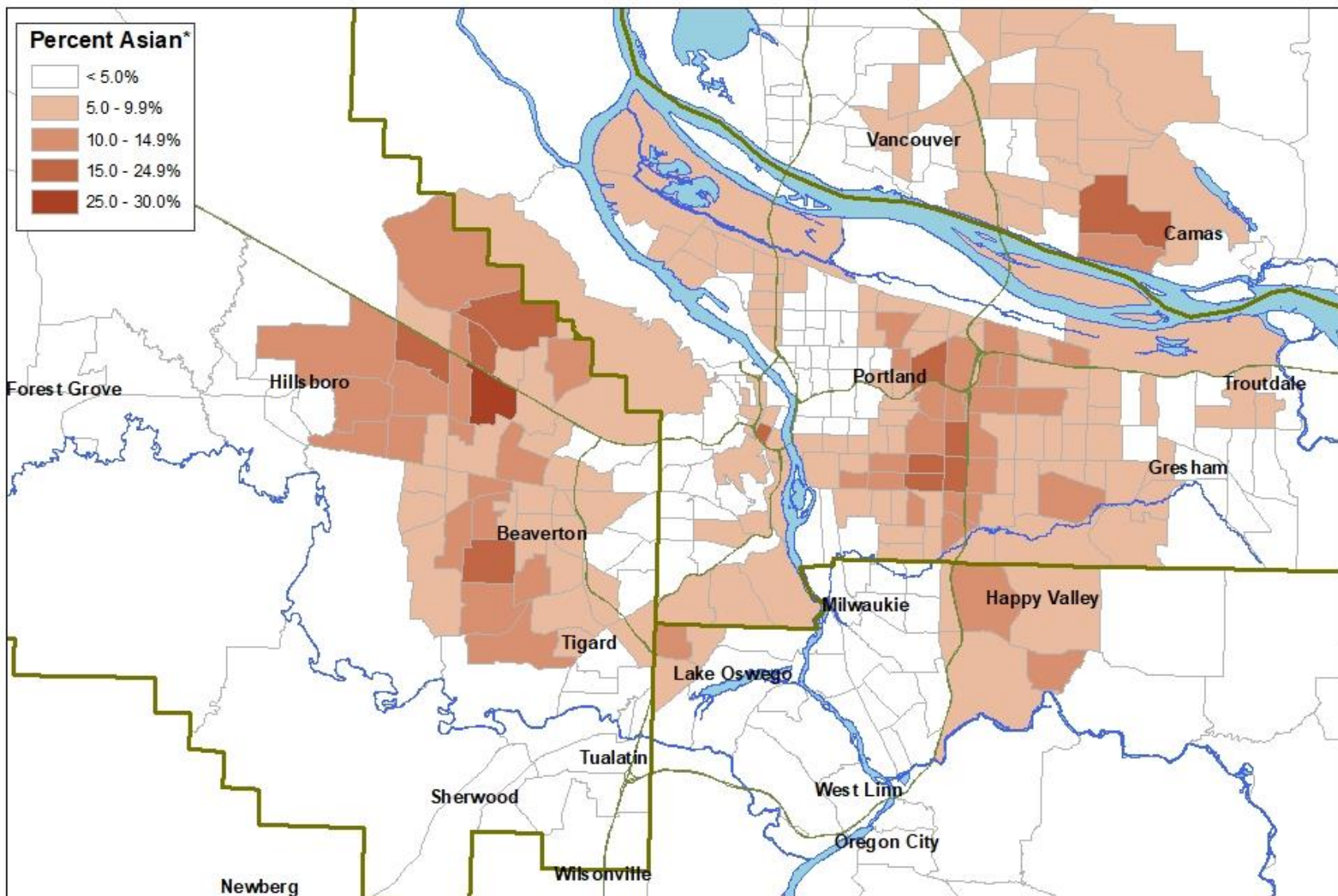
Asian Population Share by Census Tract, 1980



Asian Population Share by Census Tract, 1990



Asian Population Share by Census Tract, 2000

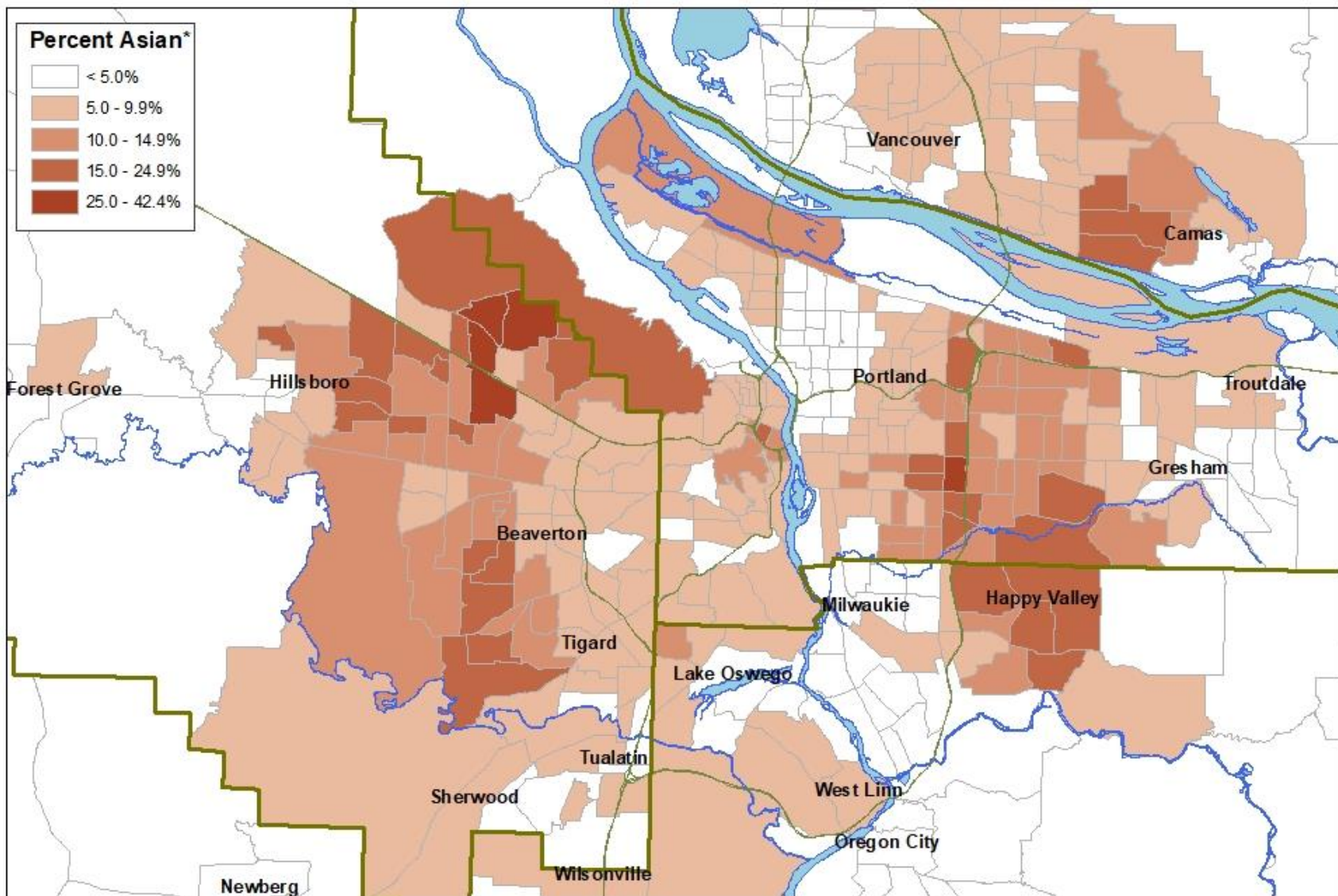


* "Asian alone or in combination with other races"

www.pdx.edu/prc

Sources: U.S. Census Bureau, TIGER 2010; Metro RLIS.
Prepared by Population Research Center, Portland State University

Asian Population Share by Census Tract, 2010



* "Asian alone or in combination with other races"

www.pdx.edu/prc

Sources: U.S. Census Bureau, TIGER 2010; Metro RLIS.
Prepared by Population Research Center, Portland State University

Thank You, Madam Chair and
Members of the Committee!

Questions and Comments

Population Research Center

askprc@pdx.edu

503-725-3922