



# Recycling Update

**Abby Boudouris, Oregon DEQ**

**Celeste Meiffren-Swango, Environment Oregon**

**Timm Schimke, Deschutes County**

**Laura Leebrick, Rogue Disposal and Recycling**

**Dylan de Thomas, The Recycling Partnership**

House Energy & Environment Committee info session

February 8, 2021



# Today's presentation

---

- Background on recycling issues
- Recycling Steering Committee process and proposal
- Deep dive on key issues
- Existing EPR programs
- Next steps



# Recycling system issues

- Public confusion
- More contamination
- Higher costs for ratepayers
- Lack of access to recycling, especially in apartments and rural areas
- No assurance of responsible recycling
- Insufficient involvement from brands and manufacturers



# Recycling Steering Committee

- Optimize the environmental benefits of managing materials using a life cycle perspective
- Create a resilient recovery system that can adapt to changes in supply and demand
- Restore and maintain public trust in the system



# Modernizing Oregon recycling



## PRODUCERS

Finance system improvements and ensure responsible recycling



## LOCAL GOVERNMENTS

Maintain local control of collection and education



## COLLECTORS

Work with system partners to improve collection access



## PROCESSORS

Meet new standards and send material to responsible markets



## ADVISORY COUNCIL

Advise on important system elements



## STATE GOVERNMENT

Provide strong oversight, enforcement and permitting

# Problems with plastics

- Marine debris
- Source of global greenhouse gas emissions
- Public health concerns
- Disposal burdens



# Exporting contamination

- Little regulation of recycling processors
- Market driven
- Not transparent
- Loss of public trust



# Recycling won't solve everything

---





# Producer engagement

- Incentives for producers to design packaging
- More integrated system
- Shared responsibility
- Increased accountability



# Local governments and ratepayers

---

- Local governments required to implement recycling programs
- Programs vary across state
- Ratepayer financed
- Local response to changes



# Challenges for rural areas

---

- Distance to recycling processing facilities
- Increased costs
- Reduced services



# Challenges for multifamily

- Barriers to participation
- Higher contamination
- Inconsistent services across the state



# Collection and processing

- Collectors have collection service arrangements with local governments
- Processors sort and sell recyclable commodities in open market



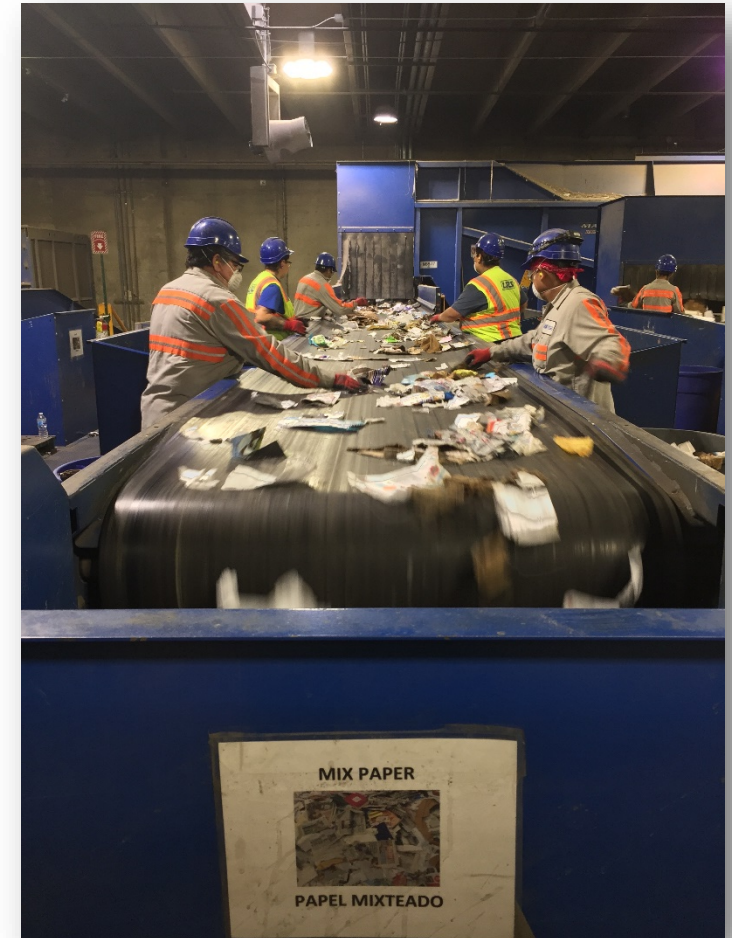
# Public confusion

- Misleading labeling
- Inconsistency of collection lists
- Truth in labeling



# Contamination issues

- Increased costs
- Hazards to workers
- Needs to be addressed at every step



# Market issues

- Recycling markets have history of volatility
- Economic signals and environmental benefits are not aligned
- Economics have become harder over time





# Producer roles

- Voluntary commitments
- Limited role in Oregon's recycling system
- Need for investment
- Producers seeking "opportunity for the private sector to act as stewards of the circular economy"



# Extended producer responsibility

Environmental management strategy for minimizing a product's environmental, health, safety and social impacts throughout all stages of the product's life.



# Vision for a modernized system

- Stable costs for the public
- Simple statewide list
- Truthful labels
- Clear communications and education
- Improvements for multifamily
- Improvements for rural communities
- Less pollution
- Better working conditions
- Safer products over time
- Responsible recycling





# Thank you

Abby Boudouris: [abby.boudouris@deq.state.or.us](mailto:abby.boudouris@deq.state.or.us)

Celeste Meiffren-Swango: [celeste@environmentoregon.org](mailto:celeste@environmentoregon.org)

Timm Schimke: [tim.schimke@deschutes.org](mailto:tim.schimke@deschutes.org)

Laura Leebrick: [lleebrick@roguedisposal.com](mailto:lleebrick@roguedisposal.com)

Dylan de Thomas: [ddethomas@recyclingpartnership.org](mailto:ddethomas@recyclingpartnership.org)

More information: <http://go.usa.gov/x7nZG>