

# Mental Health Regulatory Agency – Workforce Data 2021

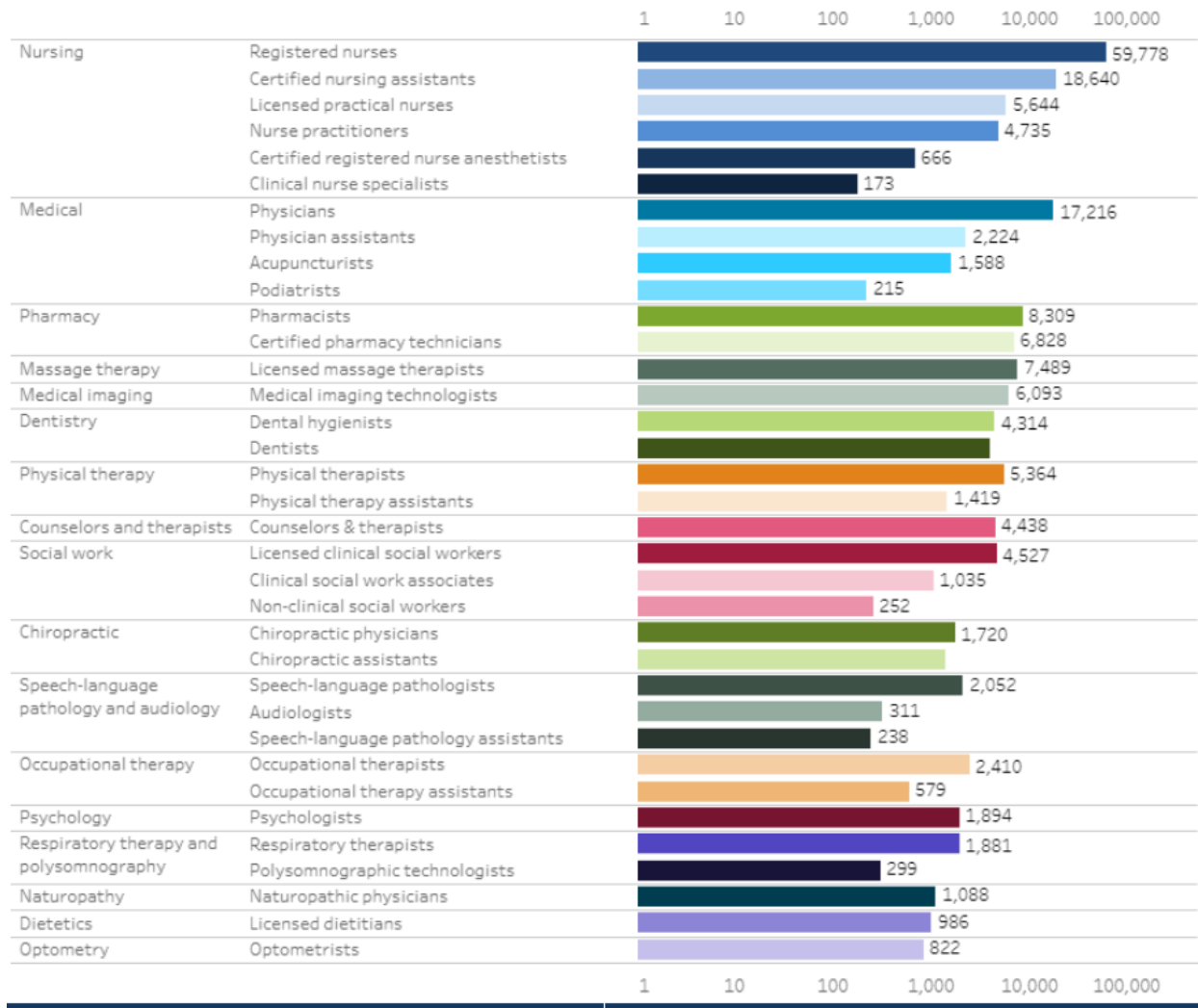
Source: Health Care Workforce Reporting Program (2020). *Oregon’s health care workforce: Supply and profiles*. Interactive display accessed 02/01/2021. Portland, OR: Oregon Health Authority. <https://go.usa.gov/xvn3Z>

**Overview:** The Health Care Workforce Reporting Program (HWRP) collaborates with 17 health licensing boards to collect data on health care professionals in Oregon. Over 150,000 professionals in more than 35 occupations are surveyed when renewing their license. Information is gathered on demographics and practice details including hours worked each week, specialty and future plans. The HWRP uses this data from renewing licensees to estimate supply at the state and county levels and to inform educational investments and policy recommendations.

## Licensed professionals in Oregon by workforce and occupation for 2020

*Hover over the chart to view measures over time.*

Knowing the equivalent number of professionals practicing full-time (FTE) in direct patient care is essential to determining workforce supply for state planning purposes. The estimated direct patient care FTE for each occupation is calculated from the estimated number of practicing professionals and self-reported percentage of time spent in direct patient care. Direct patient care FTE is a subset of practicing professionals which is a subset of licensed professionals.

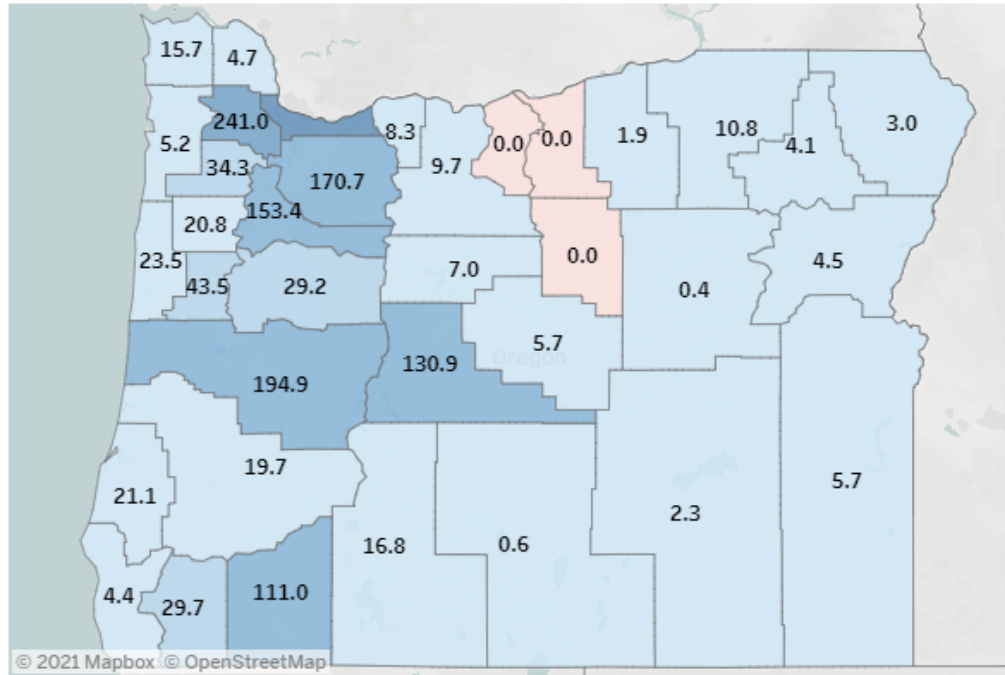


# Board of Licensed Professional Counselors & Therapists

## Direct patient care FTE of Counselors & therapists by county in 2020

The darker the blue, the more direct patient care FTE in county. If counties are red, then there are no Counselors & therapists with primary practices in that county.

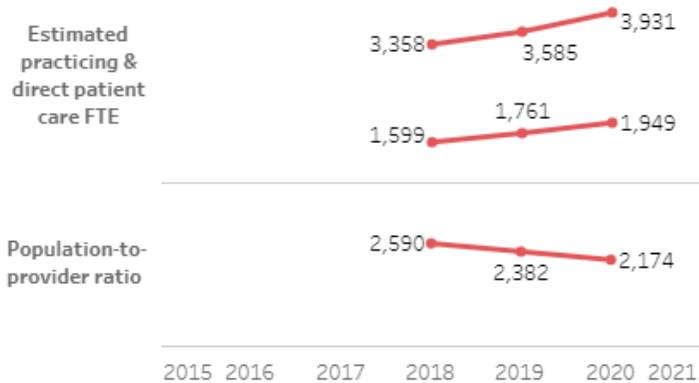
Select one or more counties to display supply estimates below, hover over the map for more details:



## Estimates over time for Counselors & therapists:

Hover over the charts to view percent change over time.

Statewide:



## 2020 county and statewide estimates for Counselors & therapists

County	Population	Number estimated practicing	Direct patient care FTE	Population-to-provider ratio	
Baker	16,820	6	4.5	3,738	△
Benton	94,360	100	43.5	2,167	
Clackamas	423,420	370	170.7	2,480	
Clatsop	39,330	31	15.7	2,498	
Columbia	52,750	11	4.7	11,126	△
Coos	63,290	45	21.1	3,003	
Crook	23,440	10	5.7	4,108	△
Curry	23,000	6	4.4	5,235	△
Deschutes	193,000	263	130.9	1,474	
Douglas	112,250	35	19.7	5,700	△
Gilliam	1,990	0	0.0	-	□
Grant	7,360	2	0.4	16,584	△
Harney	7,360	4	2.3	3,170	
Hood River	25,480	15	8.3	3,079	
Jackson	221,290	237	111.0	1,994	
Jefferson	23,840	11	7.0	3,385	△
Josephine	86,750	66	29.7	2,924	
Klamath	68,190	34	16.8	4,068	△
Lake	8,080	2	0.6	12,982	△
Lane	378,880	398	194.9	1,944	
Lincoln	48,260	45	23.5	2,054	
Linn	126,550	56	29.2	4,328	△
Malheur	32,030	11	5.7	5,578	△
Marion	347,760	312	153.4	2,267	
Morrow	12,680	3	1.9	6,694	△
Multnomah	821,730	1,347	613.9	1,338	
Polk	82,940	47	20.8	3,995	△
Sherman	1,770	0	0.0	-	□
Tillamook	26,500	12	5.2	5,114	△
Umatilla	81,160	15	10.8	7,528	△
Union	26,840	10	4.1	6,515	△
Wallowa	7,150	6	3.0	2,393	
Wasco	27,240	24	9.7	2,800	
Washington	613,410	510	241.0	2,546	
Wheeler	1,440	0	0.0	-	□
Yamhill	108,060	68	34.3	3,147	
Oregon	4,236,400	3,931	1,948.6	2,174	

Note: Shapes indicate whether county has no providers (red square), is above (yellow triangle) or below (green circle) the statewide ratio by 50%.

Population-to-provider ratios are based on the estimated patient care FTE in the county. Values greater than county populations are due to less than 1.0 FTE in county.

**Number of licensed professionals:** Includes all health care professionals who are licensed to practice in Oregon by an Oregon licensing board. Includes health care professionals who may not be active and new licensees who have not yet renewed their license (so have not taken the HWRP survey).

**Number of estimated practicing professionals:** Estimated by multiplying the total number of licensed professionals in Oregon by the active practice rate. The active practice rate is the percentage of licensed professionals who actively practice in Oregon. We assume that new licensees practice at the same rate as renewing licensees.

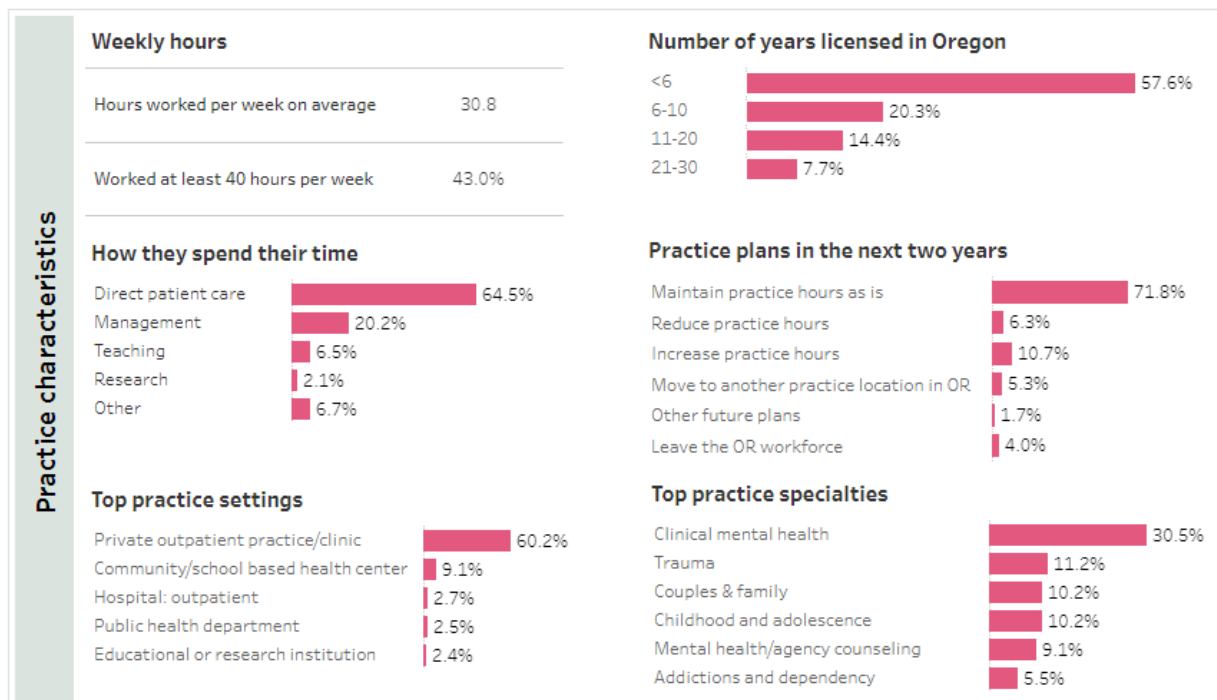
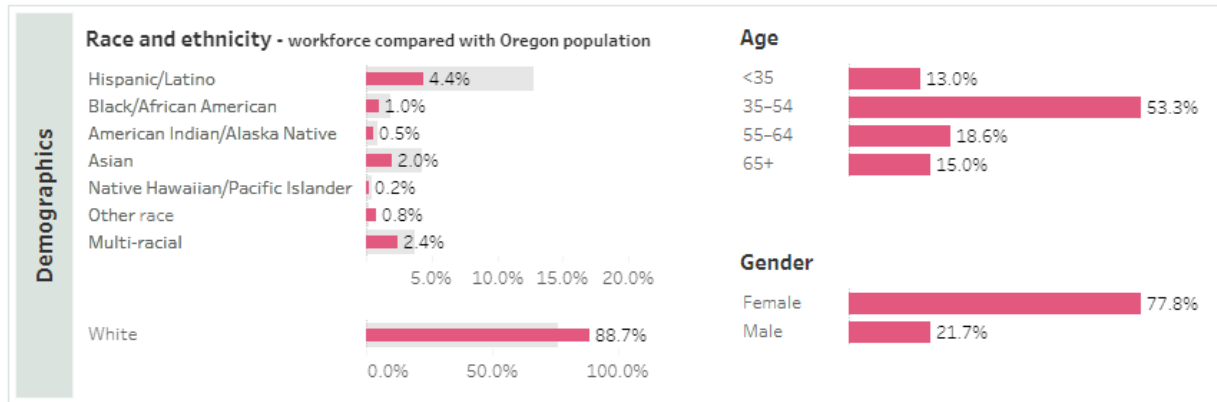
**Full time equivalent or FTE:** Because not all professionals work full-time, the equivalent number of professionals available full-time for each occupation is estimated by multiplying the number of estimated practicing professionals by average FTE for occupation. FTE is calculated based on the total hours worked per week for each licensee and then averaged over all active licensees in the occupation.

**Direct patient care FTE of professionals:** Because professionals do not spend all of their time in direct patient care, the equivalent number of professionals providing full-time direct patient care is estimated by multiplying the number of estimated practicing professionals by the average direct patient care FTE for the occupation. Average direct patient care FTE is calculated based on the total hours worked per week for each licensee and percent of time reported in direct patient care and then averaged over all active licensees in the occupation.

**Population-to-provider ratios:** Estimated by dividing the total number of individuals in the population (at either the state or county level) by direct patient care FTE in the same area. Direct patient care FTE in the county is calculated based on direct patient care FTE at the statewide level and the number of active professionals practicing in the county.

## Counselors & therapists practicing in Oregon in 2020

Hover over charts for more details.





## 2020 county and statewide estimates for Psychologists

County	Population	Number estimated practicing	Direct patient care FTE	Population-to-provider ratio	
Baker	16,820	1	1.2	13,514	△
Benton	94,360	58	32.7	2,885	
Clackamas	423,420	166	86.4	4,901	
Clatsop	39,330	6	2.9	13,563	△
Columbia	52,750	2	1.0	54,703	△
Coos	63,290	2	1.3	47,592	△
Crook	23,440	2	1.2	19,446	△
Curry	23,000	4	1.6	13,955	△
Deschutes	193,000	67	35.8	5,392	
Douglas	112,250	9	4.0	28,350	△
Gilliam	1,990	0	0.0	-	□
Grant	7,360	0	0.0	-	□
Harney	7,360	0	0.0	-	□
Hood River	25,480	8	5.5	4,627	
Jackson	221,290	61	32.3	6,847	
Jefferson	23,840	1	0.8	28,431	△
Josephine	86,750	8	3.0	28,964	△
Klamath	68,190	3	1.4	47,315	△
Lake	8,080	1	0.1	68,523	△
Lane	378,880	204	93.2	4,063	
Lincoln	48,260	4	2.3	20,988	△
Linn	126,550	19	10.1	12,565	△
Malheur	32,030	1	0.6	50,931	△
Marion	347,760	148	62.6	5,560	
Morrow	12,680	0	0.0	-	□
Multnomah	821,730	673	332.0	2,475	
Polk	82,940	9	2.6	31,779	△
Sherman	1,770	0	0.0	-	□
Tillamook	26,500	1	0.1	202,262	△
Umatilla	81,160	8	4.9	16,492	△
Union	26,840	4	1.0	27,097	△
Wallowa	7,150	0	0.0	-	□
Wasco	27,240	2	1.7	16,307	△
Washington	613,410	275	127.2	4,823	
Wheeler	1,440	0	0.0	-	□
Yamhill	108,060	50	19.7	5,477	
Oregon	4,236,400	1,703	869.4	4,873	

Note: Shapes indicate whether county has no providers (red square), is above (yellow triangle) or below (green circle) the statewide ratio by 50%.

Population-to-provider ratios are based on the estimated patient care FTE in the county.

Values greater than county populations are due to less than 1.0 FTE in county.

**Number of licensed professionals:** Includes all health care professionals who are licensed to practice in Oregon by an Oregon licensing board. Includes health care professionals who may not be active and new licensees who have not yet renewed their license (so have not taken the HWRP survey).

**Number of estimated practicing professionals:** Estimated by multiplying the total number of licensed professionals in Oregon by the active practice rate. The active practice rate is the percentage of licensed professionals who actively practice in Oregon. We assume that new licensees practice at the same rate as renewing licensees.

**Full time equivalent or FTE:** Because not all professionals work full-time, the equivalent number of professionals available full-time for each occupation is estimated by multiplying the number of estimated practicing professionals by average FTE for occupation. FTE is calculated based on the total hours worked per week for each licensee and then averaged over all active licensees in the occupation.

**Direct patient care FTE of professionals:** Because professionals do not spend all of their time in direct patient care, the equivalent number of professionals providing full-time direct patient care is estimated by multiplying the number of estimated practicing professionals by the average direct patient care FTE for the occupation. Average direct patient care FTE is calculated based on the total hours worked per week for each licensee and percent of time reported in direct patient care and then averaged over all active licensees in the occupation.

**Population-to-provider ratios:** Estimated by dividing the total number of individuals in the population (at either the state or county level) by direct patient care FTE in the same area. Direct patient care FTE in the county is calculated based on direct patient care FTE at the statewide level and the number of active professionals practicing in the county.



## Psychologists practicing in Oregon in 2020

Hover over charts for more details.

