



# ESRI GIS SOFTWARE

## SAMPLE USE BY STATE AGENCIES

# OREGON'S ESRI ENTERPRISE LICENSE AGREEMENT

- ESRI is the State's standard for geographic information system (GIS) software by OAR
- Enterprise Information Services (State CIO) administers an enterprise license for ESRI software
- The Legislative Research & Policy Office is one of 29 State agency participants in the license

DAS Office of the Chief Financial Officer

Criminal Justice Commission

Dept. of Environmental Quality

Dept. of Human Services/OR Health Authority

Dept. of Land Conservation & Development

Dept. of Geology & Mineral Industries

Dept. of Revenue

Dept. of State Lands

Dept. of Energy

EIS/DGT Geospatial Enterprise Office

Oregon Lottery

Legislative Research & Policy Office

Business Oregon

Dept. of Agriculture

Dept. of Education

Dept. of Forestry

Dept. of Fish & Wildlife

Dept. of Transportation

Dept. of Employment

Office of Emergency Management

Dept. of Housing & Community Services

Liquor Control Commission

Dept. of Parks & Recreation

State Fire Marshall's Office

State Marine Board

Watershed Enhancement Board

Dept. of Water Resources

Public Utilities Commission

Secretary of State



# COVID RELIEF FUNDS GRANT RECIPIENTS (OBDD)

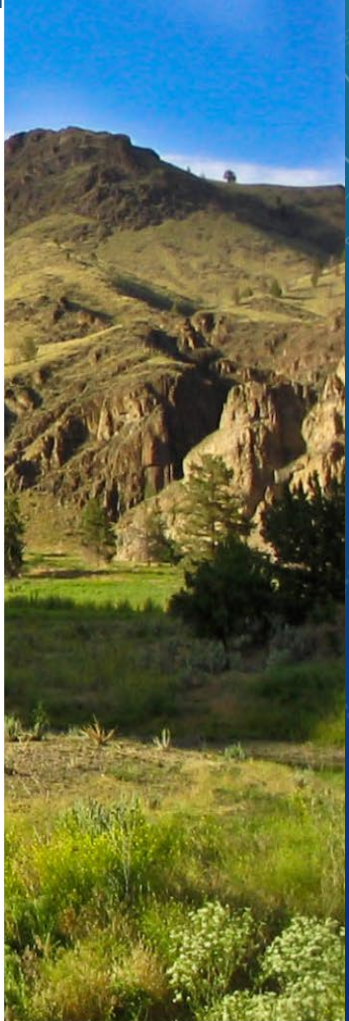
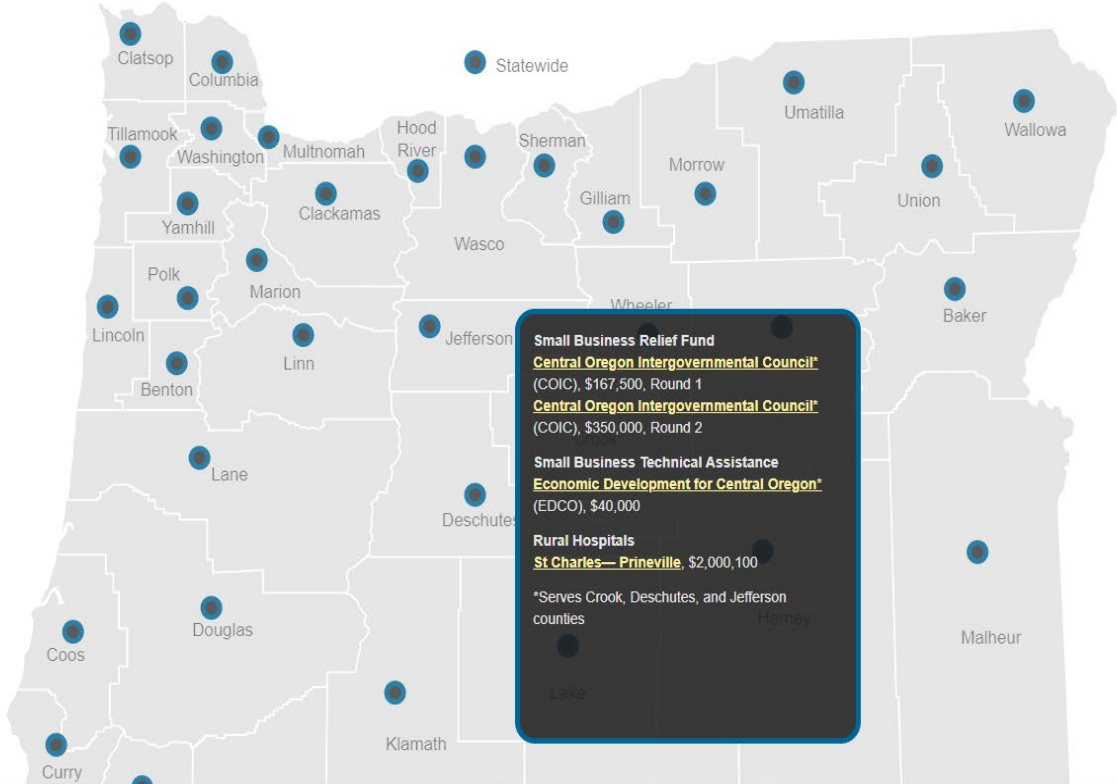


Search

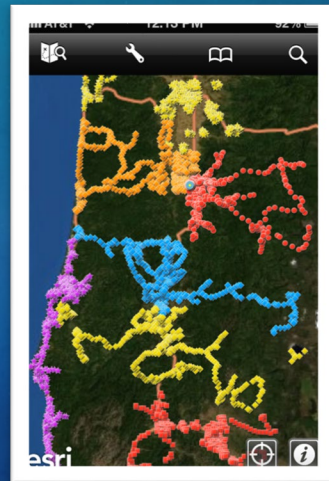
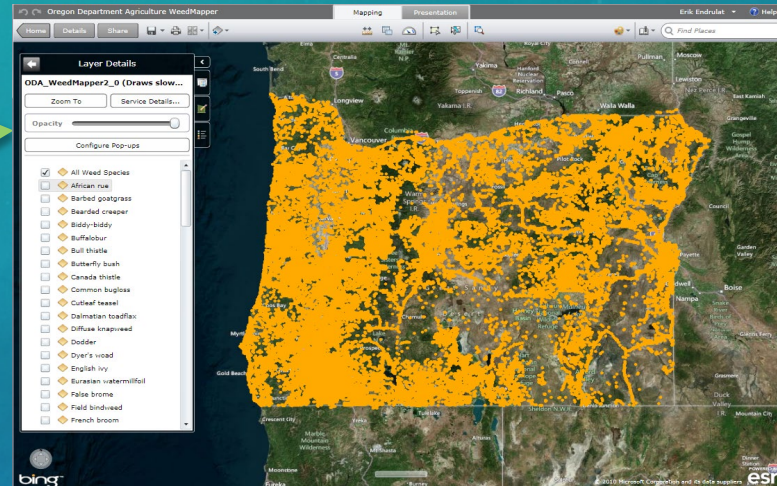
## COVID-19 RELIEF FUNDS 2020 Grant Recipients

Listed on the map are recipients of grant funds released by Business Oregon (and available for [download as PDF](#)). More information about business funding opportunities can be found on the [COVID-19 Small Business Navigator](#).

Small business grants are still available through out the state.



# INSECT PEST PREVENTION AND MANAGEMENT (ODA)




# WHO REPRESENTS ME APP (LEG. ADMIN.)

 **Who Represents Me?**

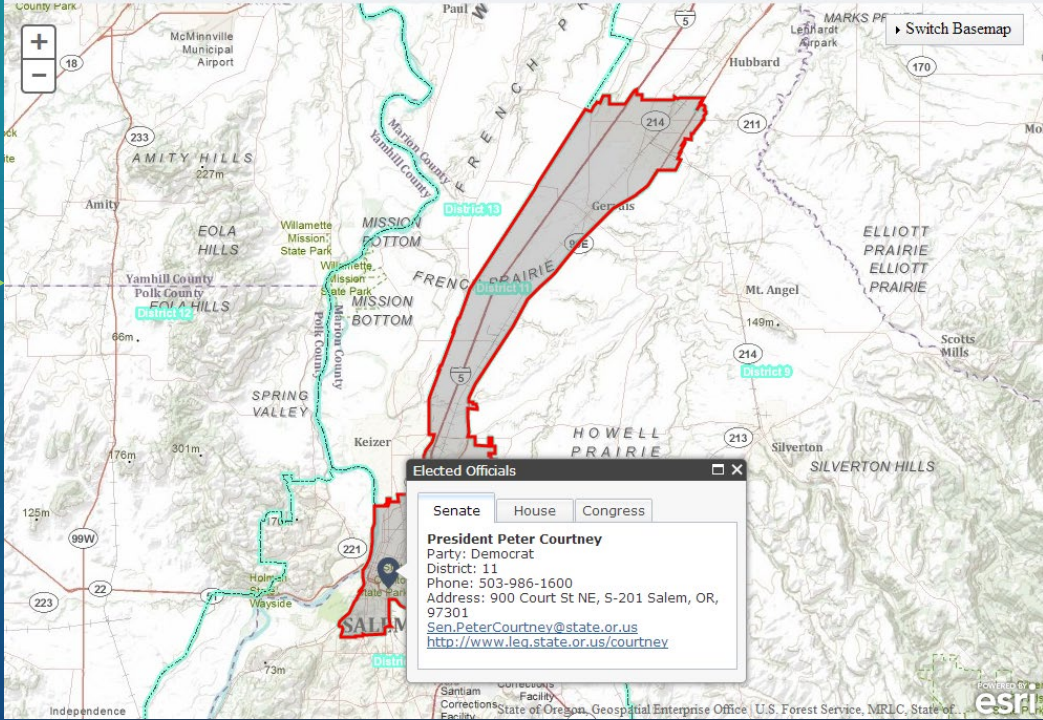
**Enter an Address**  
*\*Requires address, city, state, and zip*



 **Oregon State Legislature**  
**Who Represents Me?**

**Enter an Address**  
955 center st ne, salem

The Oregon State Legislature strives to provide accurate information. If you have questions about who represents you, please contact your county [Elections Office](#).



**Elected Officials**

Senate House Congress

**President Peter Courtney**  
Party: Democrat  
District: 11  
Phone: 503-986-1600  
Address: 900 Court St NE, S-201 Salem, OR, 97301  
[Sen.PeterCourtney@state.or.us](mailto:Sen.PeterCourtney@state.or.us)  
<http://www.leg.state.or.us/courtney>

esri



# SAGE GROUSE CONSERVATION PROJECT (ODFW)

## Greater Sage-Grouse Project Area Southeast Oregon



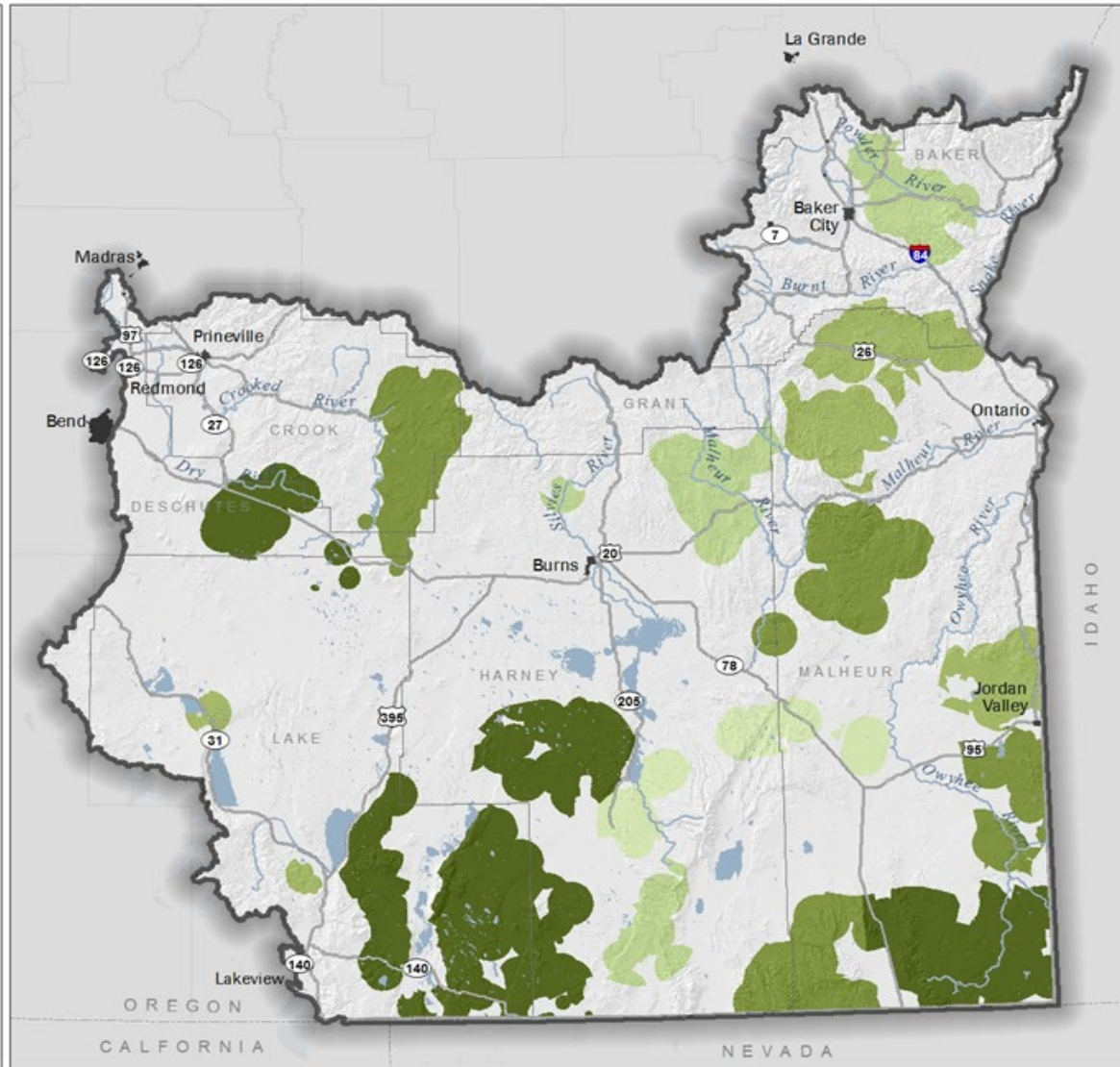
Greater Sage-grouse  
Core Habitat Areas  
Percent of Sagebrush (2010)



0 12.5 25 50 Miles

Data Sources:  
Study Area Boundary and Cartographic layers (The Nature Conservancy, 2013)  
Highways, Rivers, City limit, County and State boundaries (Oregon Geospatial Clearinghouse)  
Sage-grouse Named Core Areas (ODFW 2014)  
Percent Development (LANDFIRE 2010 and The Nature Conservancy)

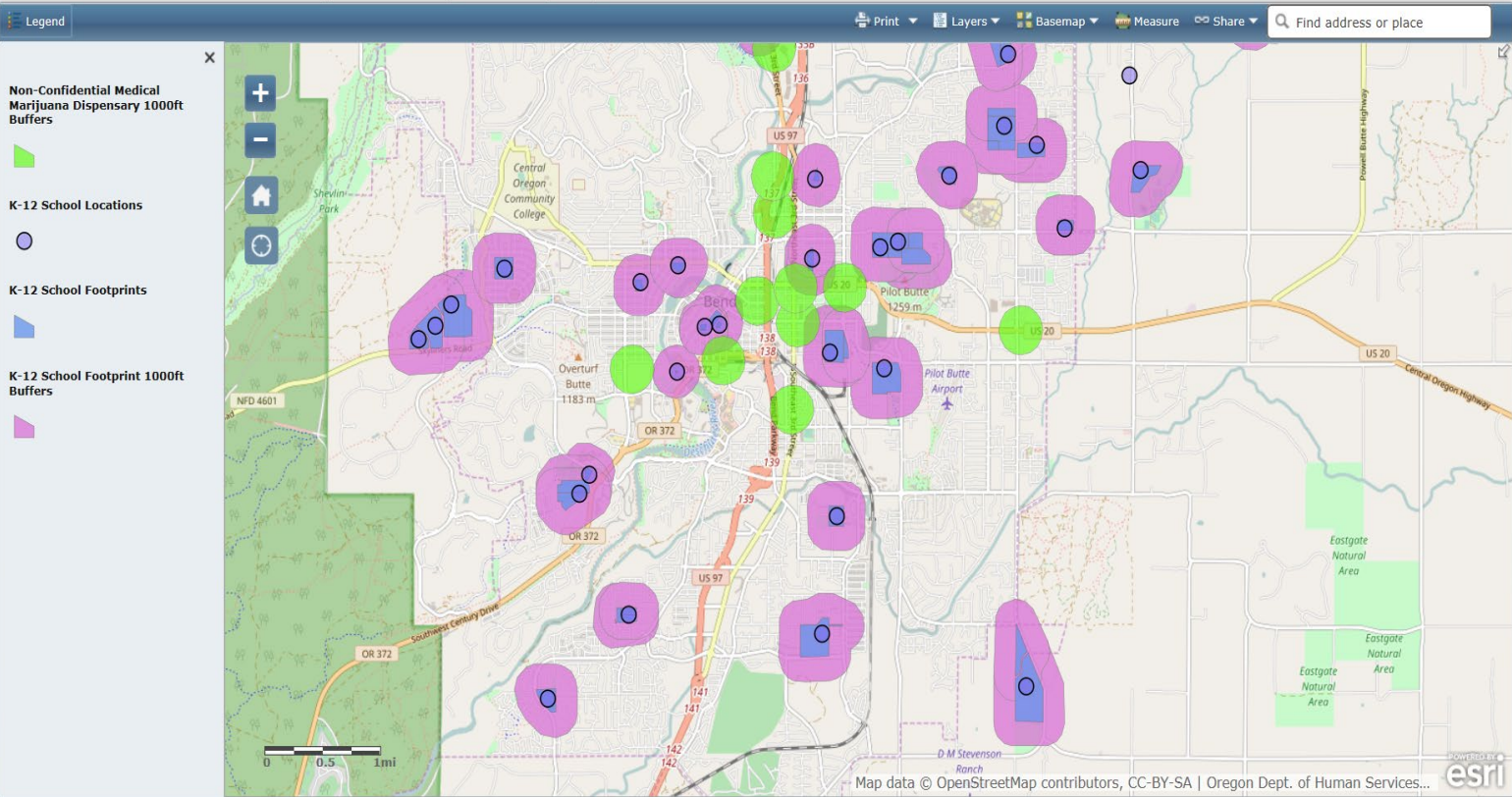
Map created by The Nature Conservancy, April 2014



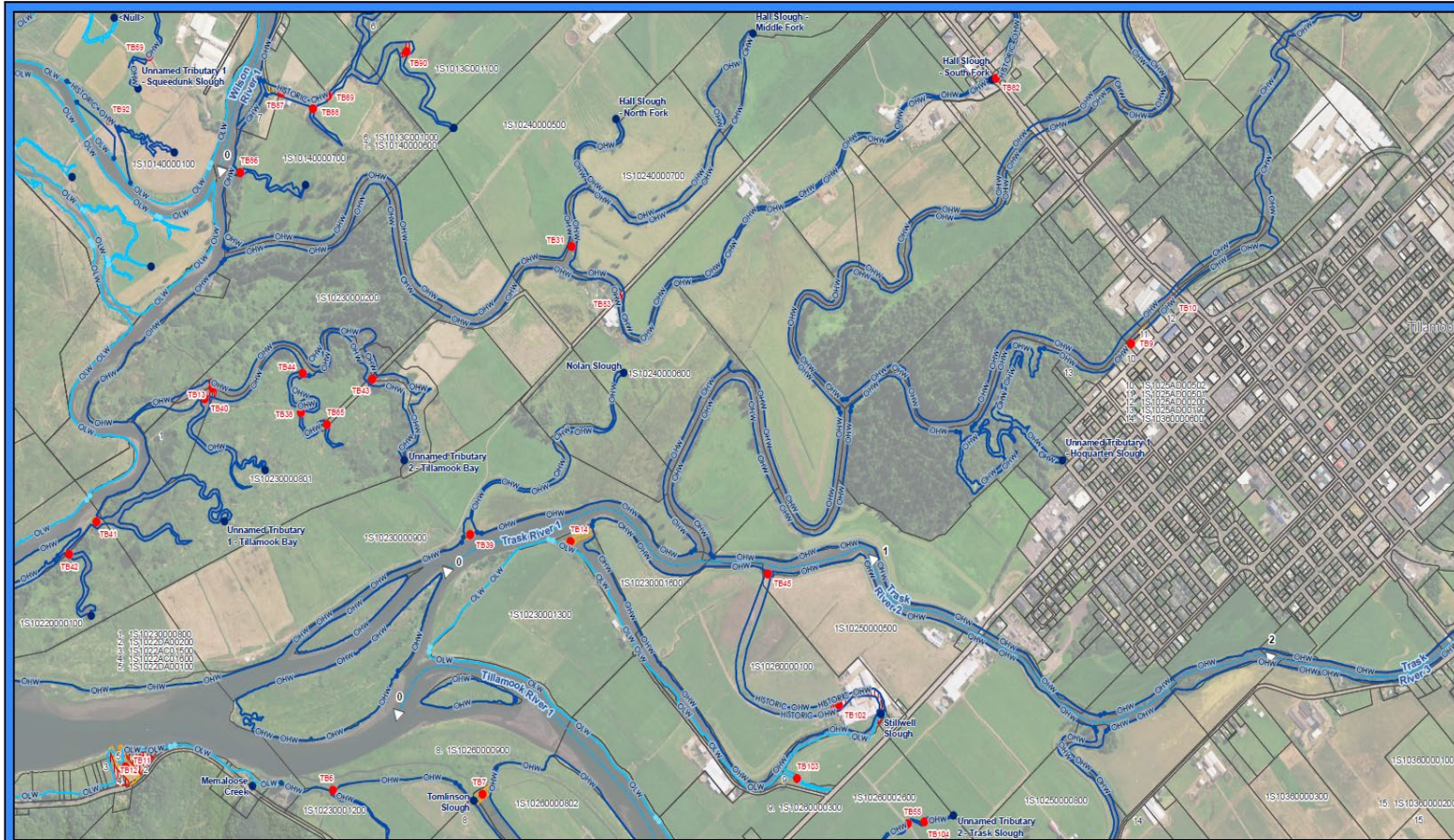
# SCHOOL FOOTPRINT 1000' BUFFERS (OHA)

## School Footprint Buffer Areas (1000 Feet)

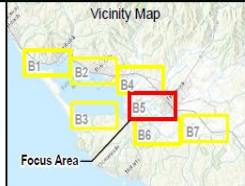
This is a tool provided for use to help locate schools and dispensaries. There may be schools that are not shown on this map. An applicant cannot and should not rely on the information provided in this tool as proof that a proposed location is not within 1,000 feet of a school or another dispensary. After you have submitted an application you will be notified by the Oregon Health Authority whether the proposed dispensary meets the criteria for registration. If your location is within 1,000 feet of a school or another dispensary, the Oregon Health Authority will issue you a denial notice that explains your appeal rights. Even if you are issued a registration, if it is determined that a school is located within 1,000 feet, the Oregon Health Authority must revoke your registration.



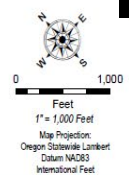
# STATE WATERWAY OWNERSHIP PROJECT (DSL)



State of Oregon  
Department of State Lands  
775 Summer St. NE, Ste 100  
Salem, OR 97301  
503-988-5200  
www.oregon.gov/DSL  
Date: 11/8/2016



- Legend**
- River Mile
  - River Centerline
  - Tax Lot
  - Heads of Tide
  - Primary Rivers
  - Limits of Review Area
  - Tributary Heads of Tide
  - Fill Events
    - Claim Demonstrated
    - No Claim Demonstrated
    - Unseparated
    - Filled Lands Areas
      - Undetermined
      - New
      - Historic
  - Geographic Scope - Ownership Status
    - Conflict
    - Not Reviewed
    - Ordinary High Water
    - Ordinary Low Water
    - Public Interest
    - Territorial Gas
    - Undetermined



## Tillamook Bay Exhibit B-5 Filled Lands Detailed Filled Event Locations

This product is for informational purposes only and may not have been prepared for, or be suitable for, legal, engineering, or surveying purposes. Users of this information should review or consult the primary data and information sources to ascertain its usability.





# LAND OWNERSHIP MAPPING PROGRAM (DOR)



# SHORELINE BOUNDARY REVIEW (DLCD)

**Details** | Add | Edit | Basemap | Save | Share

## Curry County Draft Shoreland Boundary

Draft shoreland boundary for Curry County, Oregon  
Web Map by randy.dana\_DLCD  
Last Modified: February 22, 2013  
(0 ratings, 33 views)  
Facebook | Twitter

Open | Share | Edit | Delete | Move | Change Owner

### Description

### Access and Use Constraints

### Map Contents

Shoreland Boundary Markup:  
[http://services.arcgis.com/uUvqNMGpM7axC2dD/arcgis/rest/services/Curry\\_County\\_Shoreland\\_Boundary\\_Markup/FeatureServer/0](http://services.arcgis.com/uUvqNMGpM7axC2dD/arcgis/rest/services/Curry_County_Shoreland_Boundary_Markup/FeatureServer/0)

Draft Shoreland Boundary:  
[http://services.arcgis.com/uUvqNMGpM7axC2dD/arcgis/rest/services/Curry\\_County\\_Shoreland\\_Boundary/FeatureServer/0](http://services.arcgis.com/uUvqNMGpM7axC2dD/arcgis/rest/services/Curry_County_Shoreland_Boundary/FeatureServer/0)

Oregon Tax Lots (Map Service):  
<http://utility.arcgis.com/usrvcs/rest/services/77e0b1416b2640ac9372fd515cb84ed8/MapServer>

Framework: Administrative Boundaries:  
[http://navigator.state.or.us/ArcGIS/rest/services/Framework/Admin\\_Bounds/MapServer](http://navigator.state.or.us/ArcGIS/rest/services/Framework/Admin_Bounds/MapServer)

Framework: Hazards:  
[http://navigator.state.or.us/ArcGIS/rest/services/Framework/Haz\\_GeneralMap/MapServer](http://navigator.state.or.us/ArcGIS/rest/services/Framework/Haz_GeneralMap/MapServer)

Slope greater than 25 %:  
[http://navigator.state.or.us/ArcGIS/rest/services/Projects/DLCD\\_coosSlope/ImageServer](http://navigator.state.or.us/ArcGIS/rest/services/Projects/DLCD_coosSlope/ImageServer)

HillShade:  
[http://navigator.state.or.us/ArcGIS/rest/services/Projects/DLCD\\_coosHillShade/ImageServer](http://navigator.state.or.us/ArcGIS/rest/services/Projects/DLCD_coosHillShade/ImageServer)

Imagery:  
[http://services.arcgis.com/uUvqNMGpM7axC2dD/arcgis/rest/services/World\\_Imagery/MapServer](http://services.arcgis.com/uUvqNMGpM7axC2dD/arcgis/rest/services/World_Imagery/MapServer)

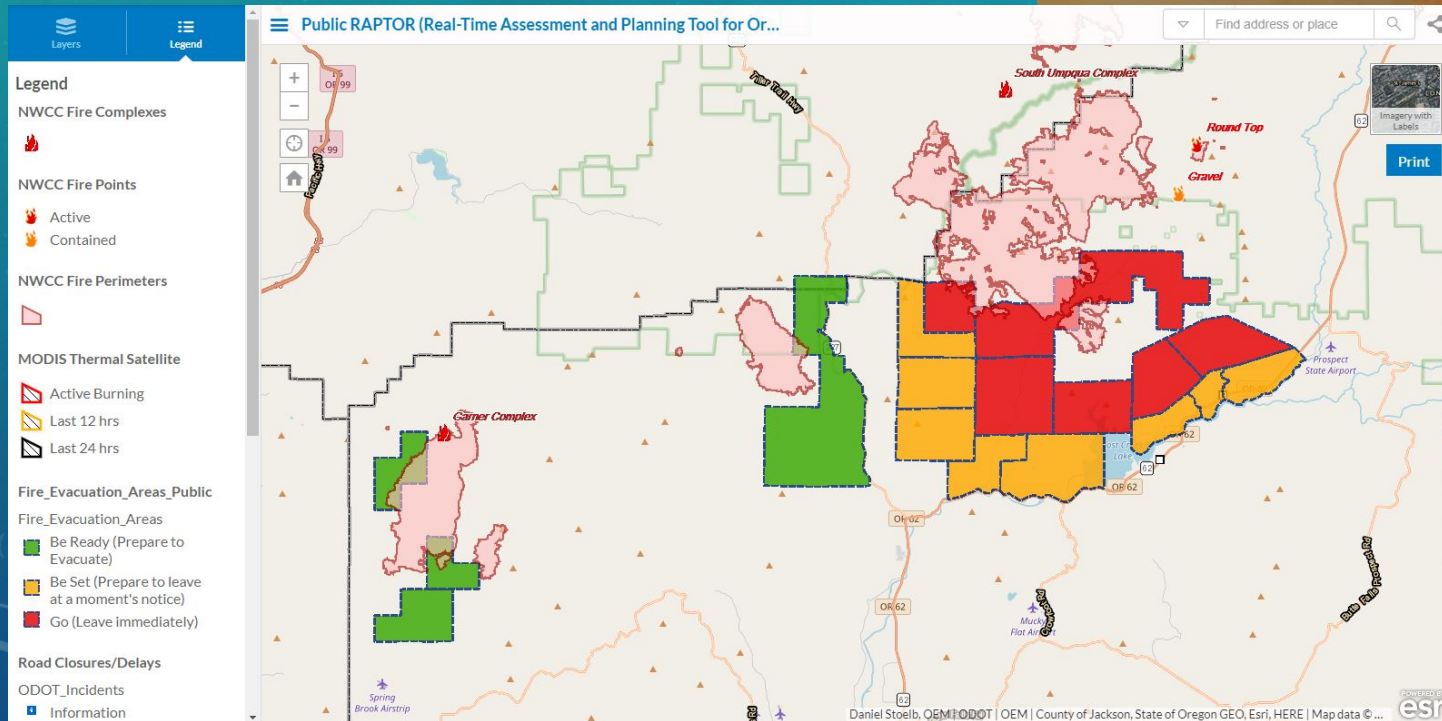
source: Esri, DeLorme, GeoEye, i-cubed, USDA, USGS, AeroVex,...

Esri.com | Terms of Use | Privacy | Contact Us | Report Abuse



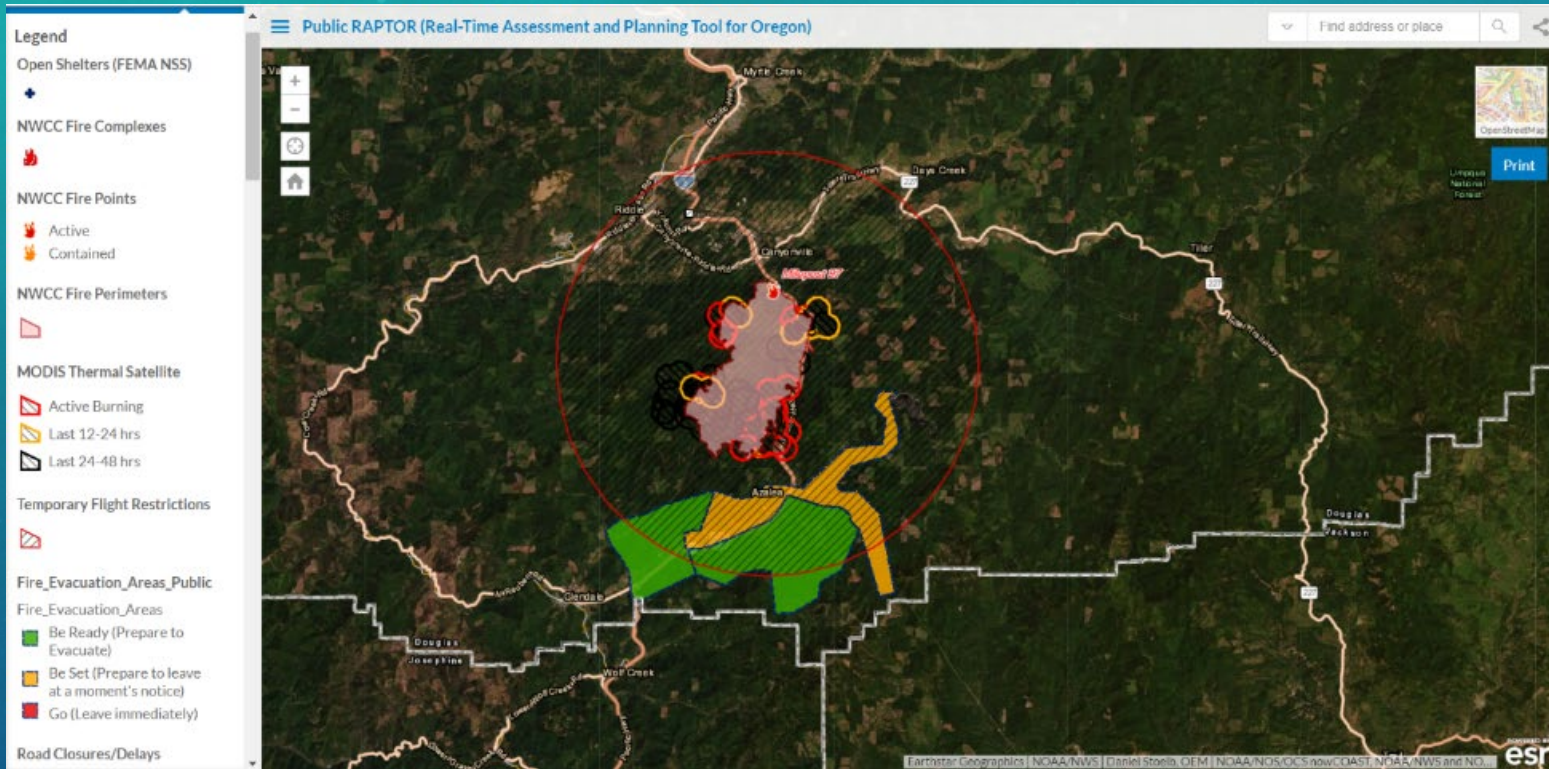
# STATE SPATIAL DATA INFRASTRUCTURE

- Wildfire response requires government agencies at multiple levels to respond
- They use geospatial data and maps to get responders and equipment to the right places



# STATE SPATIAL DATA INFRASTRUCTURE

- They have to know locations of homes, water sources, roads and utility infrastructure, hazardous chemicals, vulnerable populations, and more



# STATE SPATIAL DATA INFRASTRUCTURE

- They have to calculate and estimate the fire perimeter and likely expansion, and determine the best route for evacuating people at risk
- Many other government organizations need access to these same data and tools for their own operations

