
Oregon Health Authority Behavioral Health and Addictions Overview

Presented to
Senate Committee on
Human Services, Mental Health and Recovery
January 28, 2021

Steve Allen, Behavioral Health Director



OREGON HEALTH AUTHORITY
Health Systems Division

Behavioral Health Defined

- **Behavioral Health** conditions include:
 - **Mental illness** includes a wide range of conditions that affect mood, thinking and behavior such as: depression, anxiety disorders, schizophrenia, and eating disorders.
 - **Addictions** include excessive use of alcohol or other drugs and gambling disorders.
 - **Neurodevelopmental Disorders** include intellectual and developmental disabilities
 - **Co-occurring Conditions** include the combination of two or more of the following: mental illness, addiction, problem gambling or an intellectual or developmental disability

SUD/Addictions Continuum of Care

SUD services applies to lifespan and can be delivered in any location – work, school, home, community, residential.

- **Prevention** includes work to strengthen communities and address risk factors, as well as SBIRT – screening, brief intervention, and referral to treatment. This is an evidence-based practice as well as a CCO performance metric.
- **Early intervention and crisis services** can include sobering centers and withdrawal management.
- **Treatment** is customized to the unique needs of the individual and can include outpatient treatment, residential, case management, etc.

Overview of Current System of Services

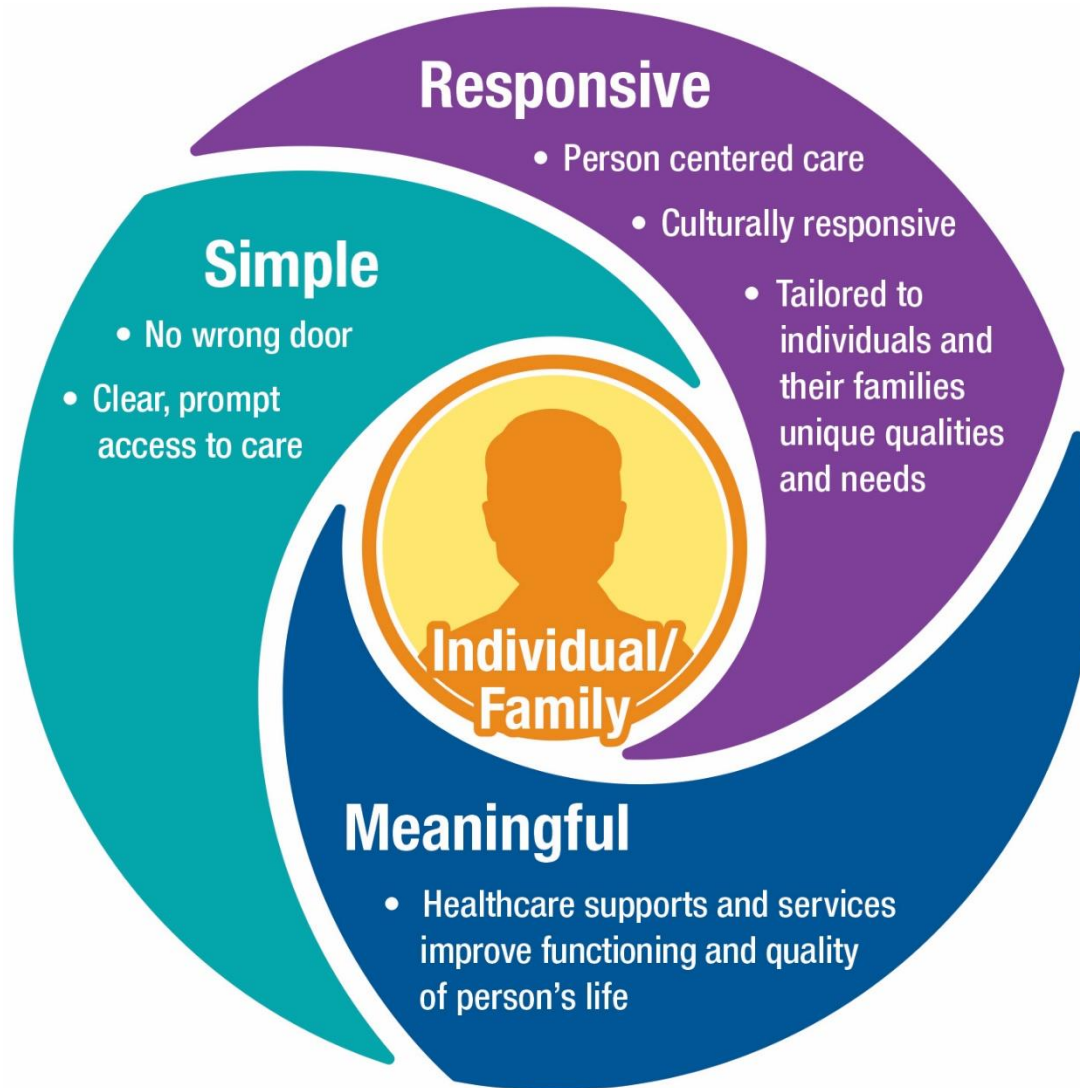
- **Array of treatment, services and supports:** prevention, early intervention, treatment and recovery supports. Services available in every county in the state, though different areas have different needs and gaps.
- **OHA funds through Medicaid, county and direct contracts:**
 - Medicaid is primary funder for SUD treatment;
 - Lottery dollars fund problem gambling services;
 - Other funds (including beer, wine, cannabis revenue) pay for services for un- and under-insured people, as well as programs and supports that are not covered by OHP.

Overview of Current Initiatives – Problem Gambling

- Community Readiness Assessment Model
- Peer Services
- GBIRT - Gambling Brief Intervention and Referral to Treatment.
- Intensive Outpatient Telehealth
- Corrections and Problem Gambling

Overview of Major Initiatives – Substance Use Disorders

- Expand Medication Assisted Treatment and Recovery
- Modernize DUII Intervention System
- Peer Services
- Medicaid SUD Waiver
- Measure 110 Implementation
- COVID-19 Harm Reduction and Community Funding
- Oregon Substance Use Disorder Recovery Housing



Thank You

Health
Oregon
Authority