



OVERVIEW OF THE EARLY LEARNING DIVISION

Presentation to House Early Childhood Committee

Miriam Calderon, Early Learning Systems Director

January 27, 2021



WHAT IS THE EARLY CARE & EDUCATION (ECE) SECTOR?

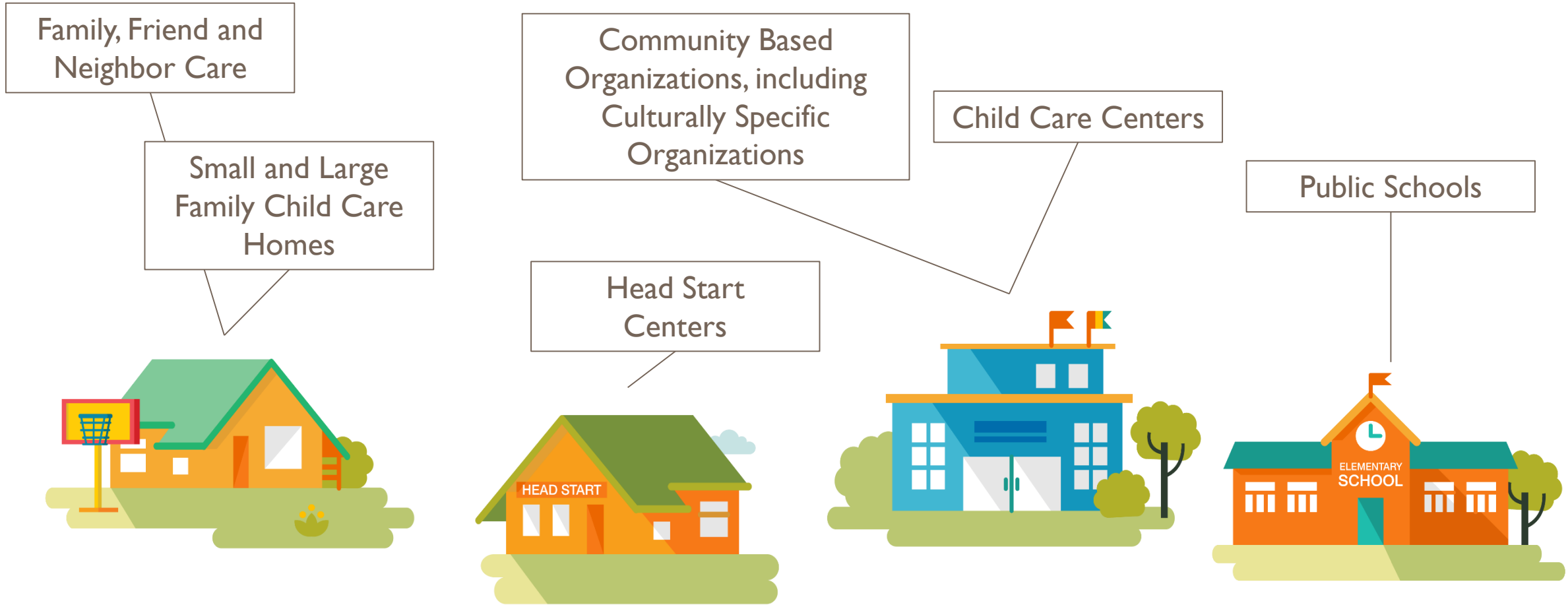
Led by knowledgeable, skilled, well-compensated **early childhood educators**



Provides educational **environments and experiences** that promote children's learning and development



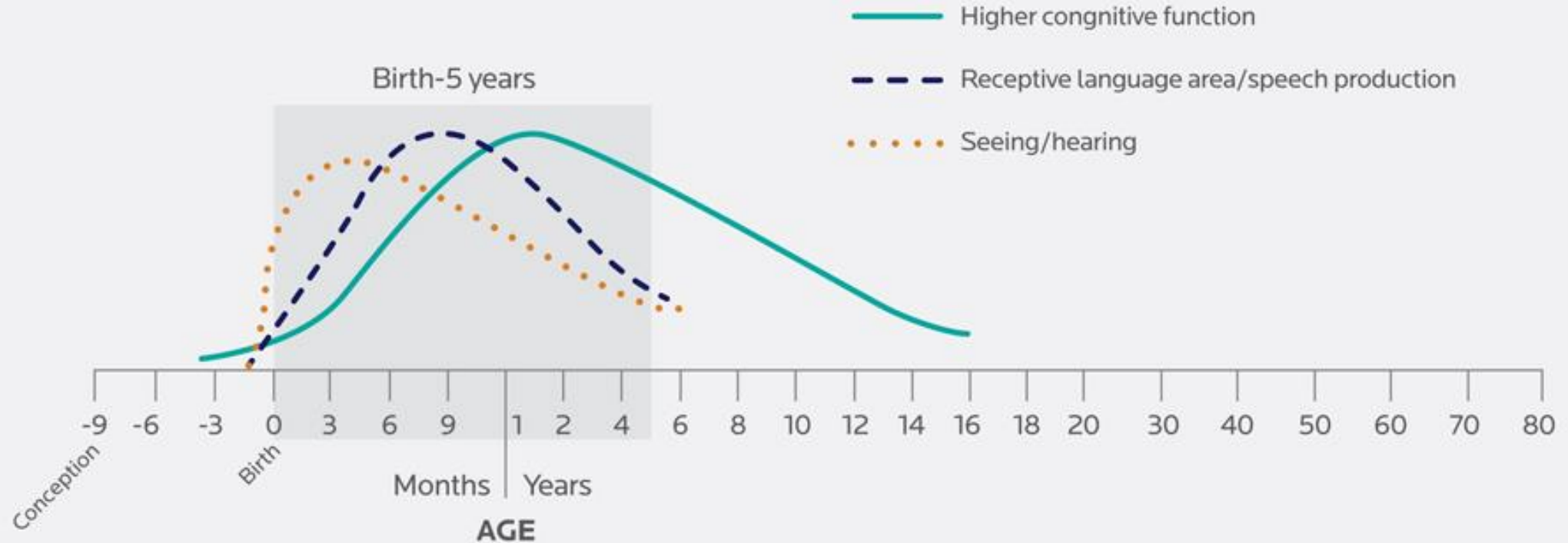
Supports children's **families** as their lifelong teacher(s)



ECE IS DELIVERED ACROSS A VARIETY OF SETTINGS.
THIS IS WHY IT IS KNOWN AS “MIXED-DELIVERY” SYSTEM.

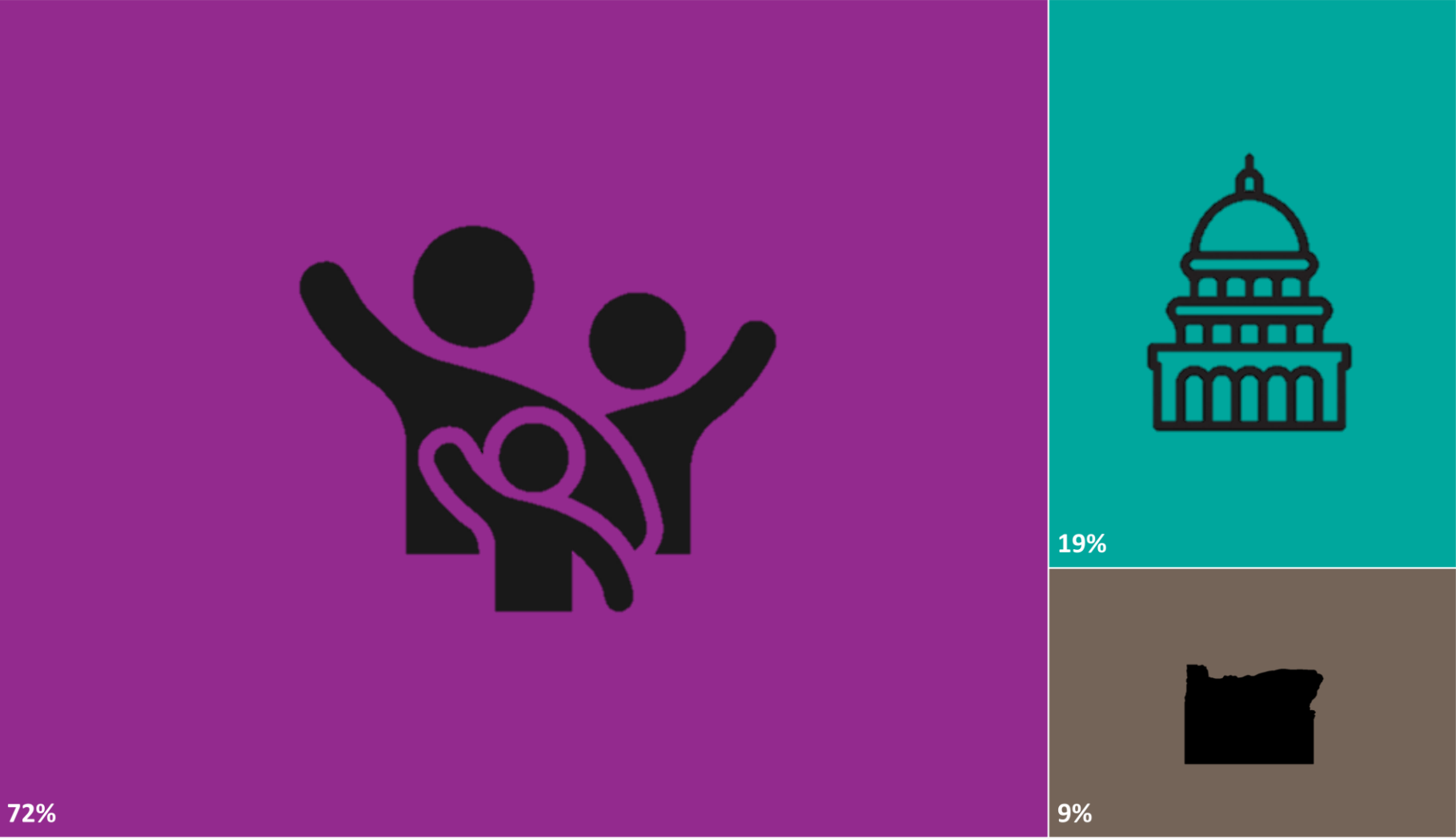
The science of child development underscores the importance of the first 2,000 days of childhood.

Figure 1. Synapse formation in the developing brain^{vii}



ALL ECE SETTINGS ARE
EARLY LEARNING SETTINGS

WHO FUNDS THE EARLY CARE & EDUCATION SECTOR?



*prior to Student Success Act



Zip code, income, and race/ethnicity are powerful predictors of a child and family's opportunities to thrive



ROLES IN EARLY CARE & EDUCATION

- Develops state plan and administers federal Child Care Development Fund (CCDF)
- License and regulate child care programs
- Administer ECE Programs
- Helping families find quality child care that meets individual needs
- Support ECE program quality and provide technical assistance
- Provide opportunities for professional development of ECE workforce





CHILD CARE ASSISTANCE FOR FAMILIES

ODHS	ELD
Determine families' eligibility and handle enrollment	Accountable for federal CCDF administration (fiscal & policy)
Calculate family co-payments and provider payments	Transfer about \$120.2 million per biennium to ODHS for ERDC
Determine provider eligibility and handle reimbursements	Health and safety assessments for regulated subsidy providers
Set administrative rules for ERDC	Support families in finding subsidized care



- Co-administer child care subsidy program (Employment Related Day Care, ERDC)
- Implement Baby Promise Pilot





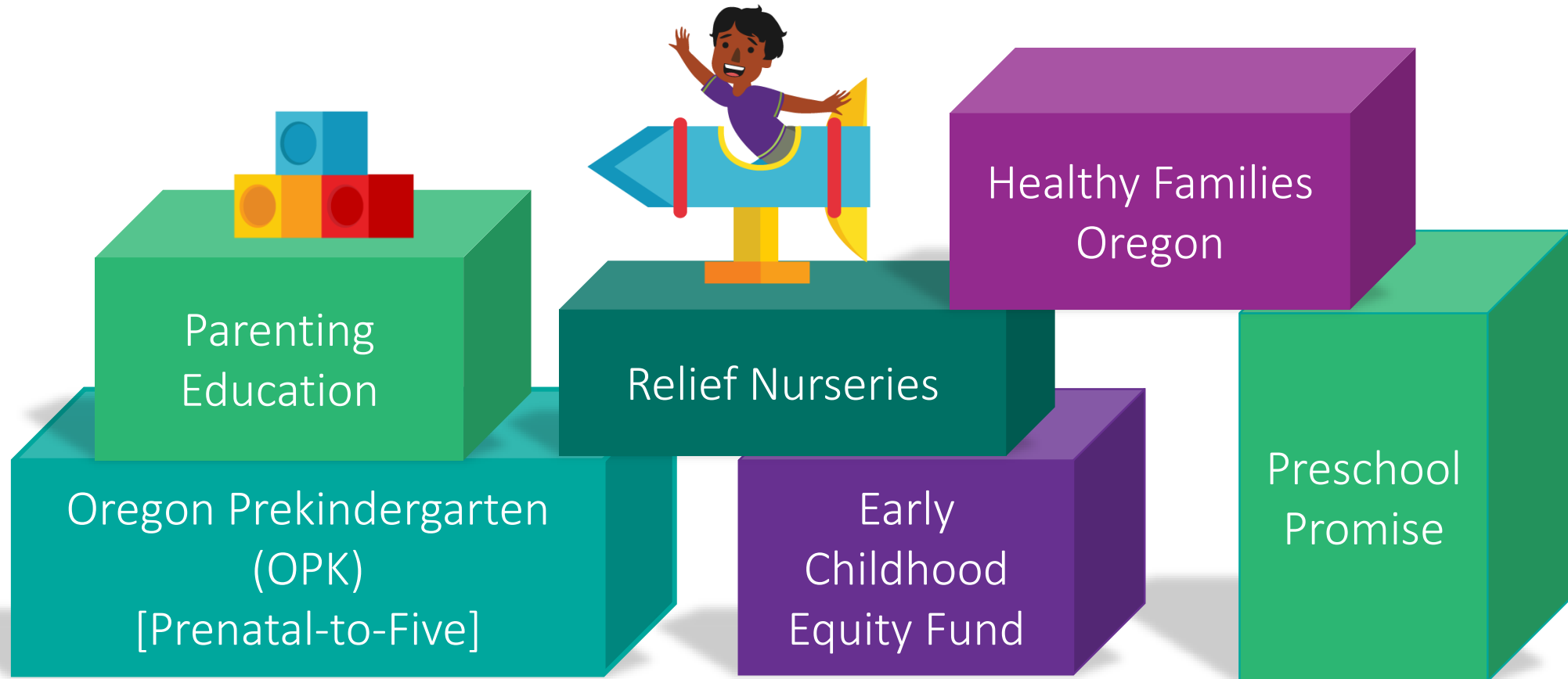
OFFICE OF CHILD CARE (OCC)

- Set foundational health and safety requirements for regulated providers
- Monitor and support providers to meet requirements
- Conduct progressive enforcement actions for serious health and safety violations
- Support families in understanding the health and safety of available care
- Investigating allegations of child abuse or neglect with ODHS
 - Complaints and illegal care





EARLY CARE & EDUCATION PROGRAMS





REGIONAL EARLY LEARNING SYSTEMS

EARLY LEARNING HUBS

- 16 Hubs across the state
- Coordinate and align regional early learning systems
- Center family voice, equity
- ECE sector plans and coordinated enrollment
- Regional lead for *Raise Up Oregon* implementation
- Facilitate action on cross sector strategies

CHILD CARE RESOURCE & REFERRAL (CCR&R)

- 15 CCR&Rs across the state
- Increase availability of high-quality, affordable early care and education
- Center provider voice, equity
- Provide training and technical assistance to ECE workforce
- Spark quality improvement system
- Maintain up-to-date information on child care availability; Child Care Referrals through 211info



PROFESSIONAL LEARNING SYSTEM

Approximately 25,000 early childhood educators across Oregon work in Birth-5 settings: child care centers, homes, schools, Head Start.



29%
people
of color

\$8-\$35/
hour

35% BA+

13 – 31%
bilingual or
non-English
speaking

25%
turnover

REQUIREMENTS AND AVERAGE COMPENSATION FOR THE EARLY CARE AND EDUCATION WORKFORCE

Requirements and policy are driven by funding stream – and this has large impacts on the support and compensation for educators

Licensed Child Care	Oregon Pre-K/Head Start	Preschool Promise	Early Childhood Special Education
N/A	Bachelor's Degree	Bachelor's Degree in ECE or Step 10 on Registry	Bachelor's Degree + TSPC License or EI/ECSE Specialist
10-15 hours of training	Annual individualized professional learning plans	Annual individualized professional learning plans	75 PDUs (initial) 125 PDUs (renewal)
\$20,000 - \$30,000	\$35,000 - \$65,000*	\$35,000 - \$65,000	\$35,000 - \$65,000

*new as of 2020-21 SY



2021 PRIORITIES

- ✓ Implementation of the Student Success Act
- ✓ Preschool Standards
- ✓ Coordination with ODHS on subsidy reforms
- ✓ *Raise Up Oregon* Implementation
- ✓ Licensing revisions
- ✓ COVID-19 response and recovery

