

---

# Oregon Health Authority Oregon State Hospital

Presented to  
Senate Committee on Human Services, Mental Health & Recovery  
January 26, 2021

Dolly Matteucci, Oregon State Hospital Superintendent



# OSH in the behavioral health continuum

- Oregon is working toward a robust and integrated behavioral health system with sufficient community prevention, treatment, diversion and crisis services.
- OSH plays a vital role in the system's continuum by treating people with complex conditions who are at risk of harm to self or others.
- OSH exists to provide treatment, stabilization, safety and successful community re-integration.
- OSH serves people with severe mental illness from all 36 counties.



# Providing hospital-level care

- Hospital level of care:  
24-hour on-site nursing and psychiatric care
  - credentialed professional and medical staff
  - treatment planning
  - pharmacy, laboratory
  - food and nutritional services
  - vocational and educational services
- Accredited by The Joint Commission and certified by the Centers for Medicare & Medicaid Services (CMS)
- Helping patients achieve a level of functioning that allows them to successfully transition back to the community



# People we serve

## Civil commitment

- Patients civilly committed or voluntarily committed by a guardian
- Those who are imminently dangerous to themselves or others, or who are unable to provide for their own basic needs due to their mental illness

## Guilty except for insanity (GEI)

- People who committed a crime related to their mental illness
- Patients are under the jurisdiction of a separate state agency – Psychiatric Security Review Board (PSRB)



# People we serve

## Aid and assist (.370)

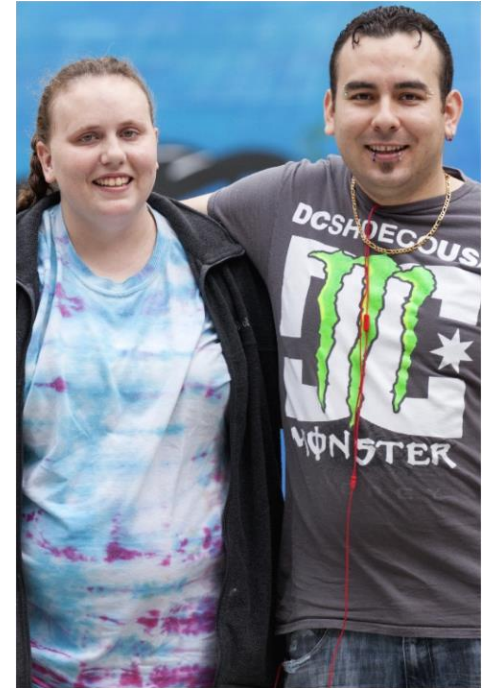
*(Salem only)*

- People ordered to the hospital by circuit and municipal courts under Oregon law (ORS 161.370)
- Treatment enables patients to understand the criminal charges against them and to assist in their own defense

## Neuropsychiatric services

*(Salem only - all commitment types)*

- People who require hospital-level care for dementia, organic brain injury or other mental illness
- Often with significant co-occurring medical issues



# 2020 Census

In 2020\*, Oregon State Hospital provided treatment for 1,294 people committed by the courts or the Psychiatric Security Review Board.

2020 Patient Statistics							
Commitment Type	Average daily population			Percent of pop.	Total Admits	% of Admits	Median length of stay
	Salem	Junction City	Total				
Civil (civil commitment, voluntary, voluntary by guardian)	41.6	29.0	70.7	11.7%	61	8.5%	149
Guilty except for insanity	176.7	69.9	246.6	40.8%	68	9.5%	784
Aid and assist (ORS 161.370)	283.4	0.0	283.4	46.9%	587	81.8%	91
Other (corrections, hospital hold)	3.4	0.0	3.4	0.6%	2	0.3%	187.5
<b>Total</b>	<b>505.1</b>	<b>99.0</b>	<b>604.0</b>	<b>100.0%</b>	<b>718</b>	<b>100.0%</b>	<b>114</b>

# Salem Campus



# Junction City Campus





# Treating the whole person

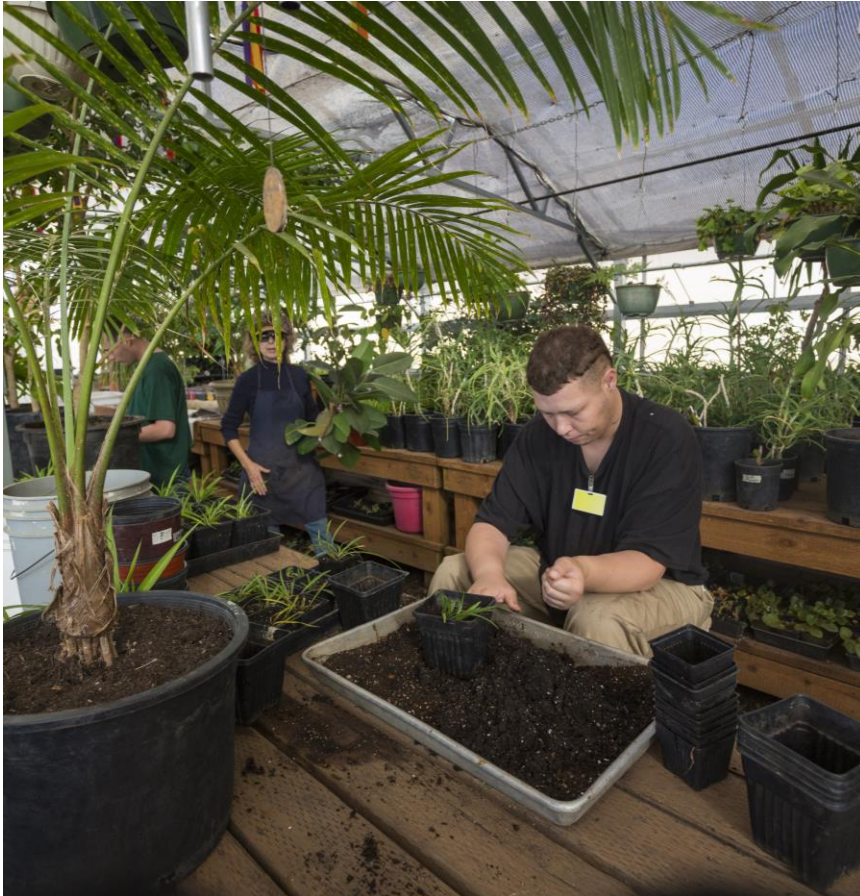


# Treatment care plans

- Patient is primary team member, staff are partners
- Updated regularly with short- and long-term goals for treatment and discharge
- Treatment includes:
  - Individual therapy
  - Treatment groups – treatment malls
  - Medication management
  - Vocation/work
  - Community integration



# Treatment



- Designed for patients to learn to manage symptoms and build skills
- Treatment Mall groups
  - Centralized active treatment
  - Groups selected to meet patients' needs and interests
- Vocational Rehabilitation\*
- Supported Education\*  
*\*Civil and GEI only*

---

**Thank You**

**Health**  
Oregon  
Authority