
Oregon Health Authority Behavioral Health and Mental Health Overview

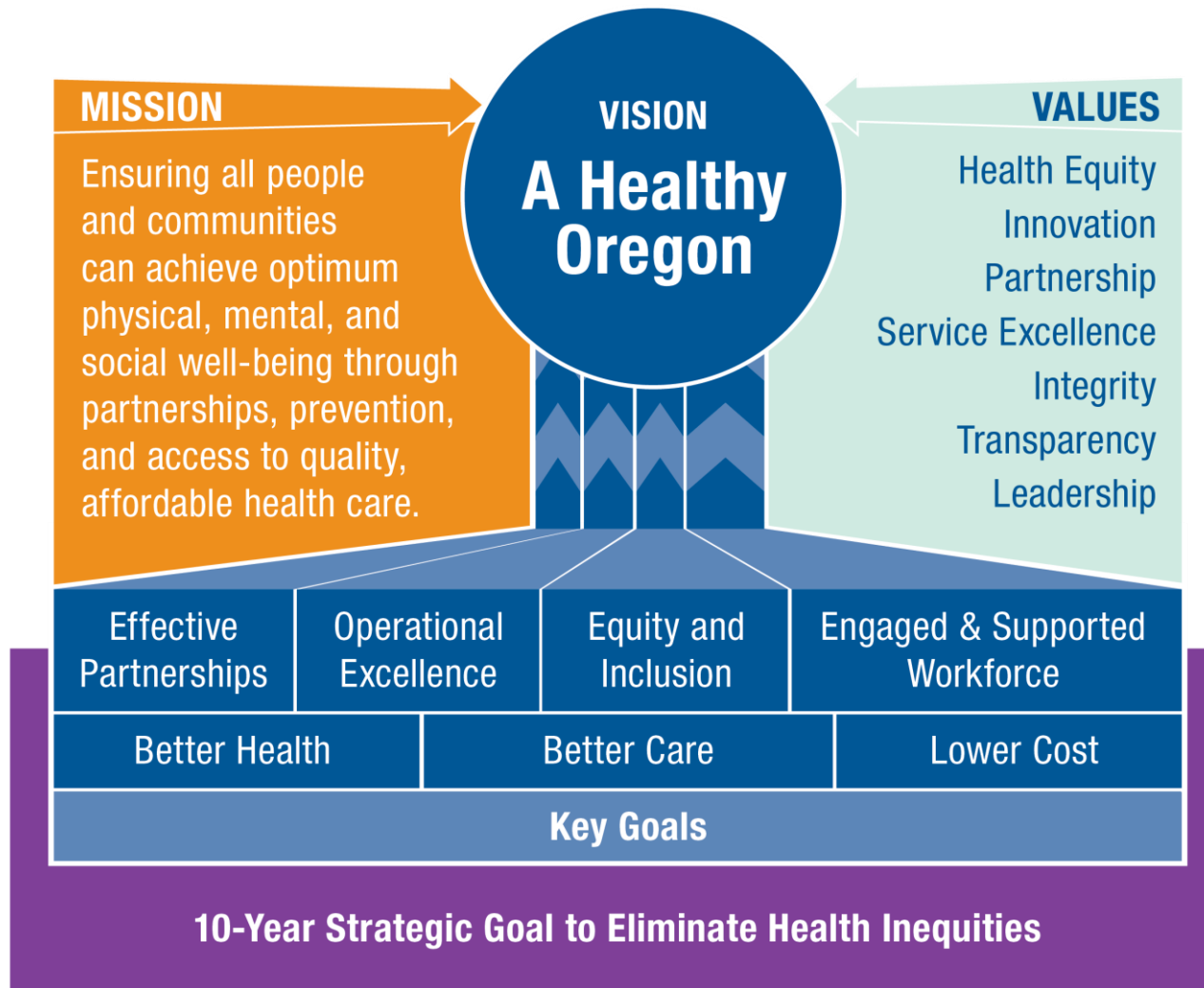
Presented to
Senate Committee on
Human Services, Mental Health and Recovery
January 21, 2021

Steve Allen, Behavioral Health Director

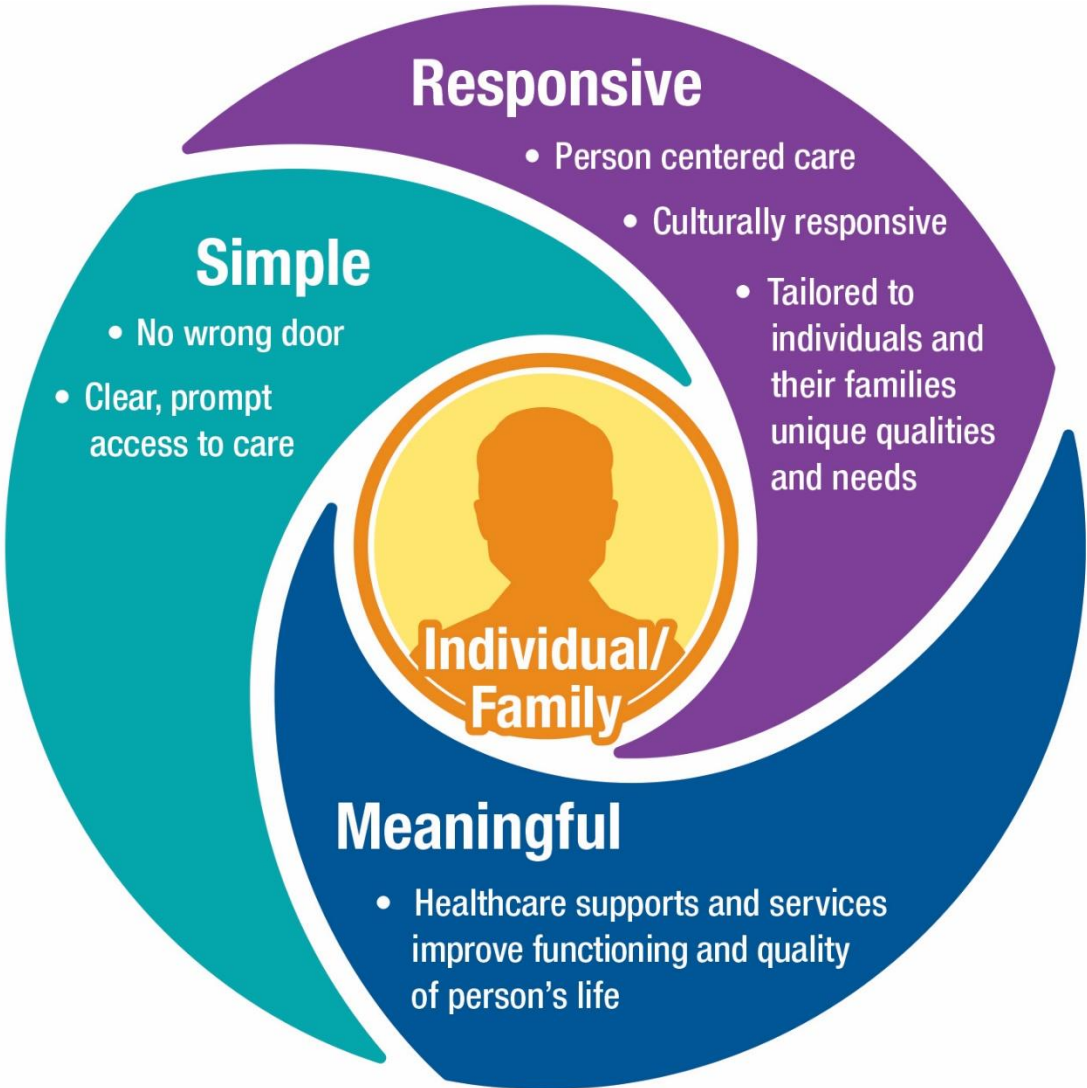


OREGON HEALTH AUTHORITY
Health Systems Division

OHA Vision, Mission, and Values



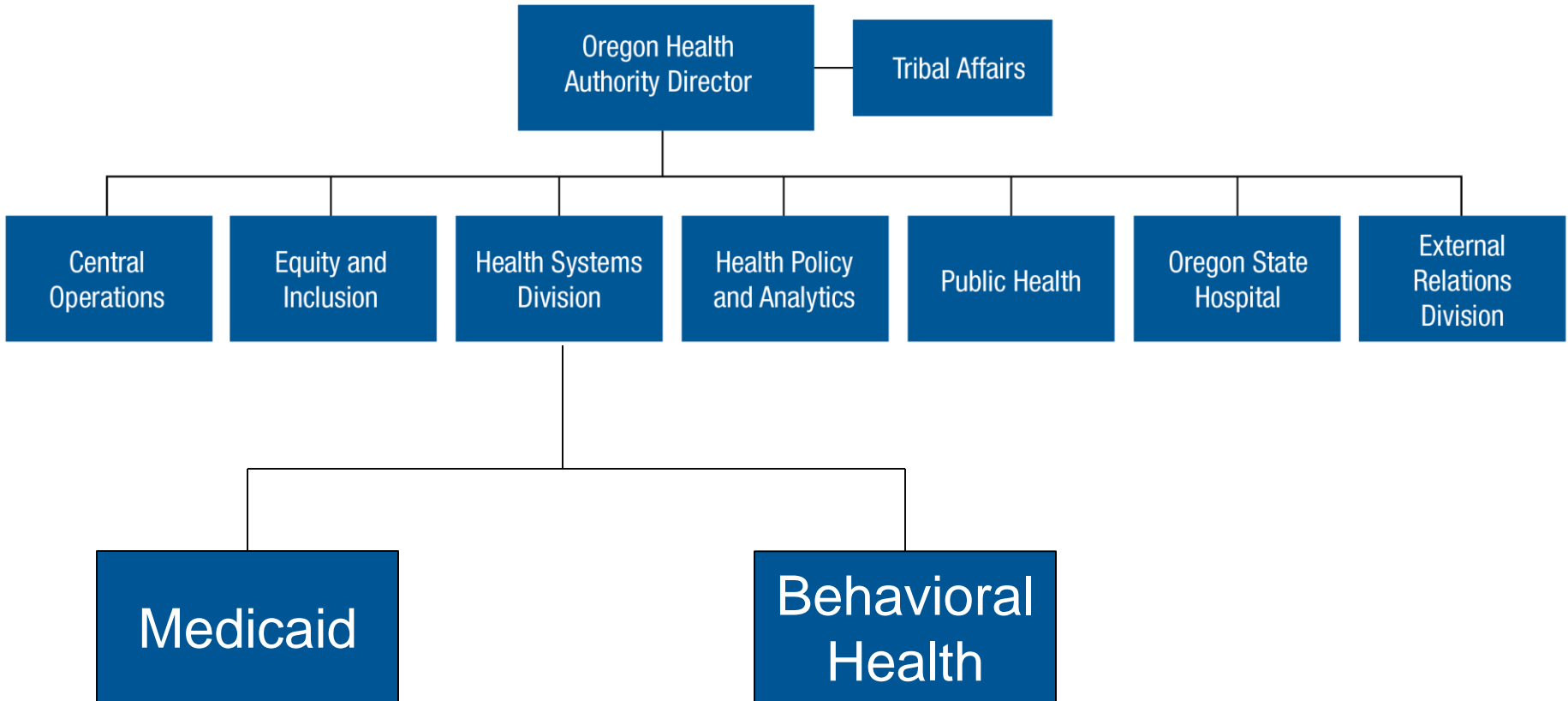
Framework: Improving Behavioral Health



Behavioral Health Defined

- **Behavioral Health** conditions include:
 - **Mental illness** includes a wide range of conditions that affect mood, thinking and behavior such as: depression, anxiety disorders, schizophrenia, and eating disorders.
 - **Addictions** include excessive use of alcohol or other drugs and gambling disorders.
 - **Neurodevelopmental Disorders** include intellectual and developmental disabilities
 - **Co-occurring Conditions** include the combination of two or more of the following: mental illness, addiction, problem gambling or an intellectual or developmental disability

OHA Organizational Structure



Behavioral Health Continuum of Care

Prevention

- Screening
- Mental Health Promotion

Intervention

- Crisis services
- Early intervention
- Safety Net Services

Treatment

- Clinical
- Outpatient
- Inpatient
- Residential

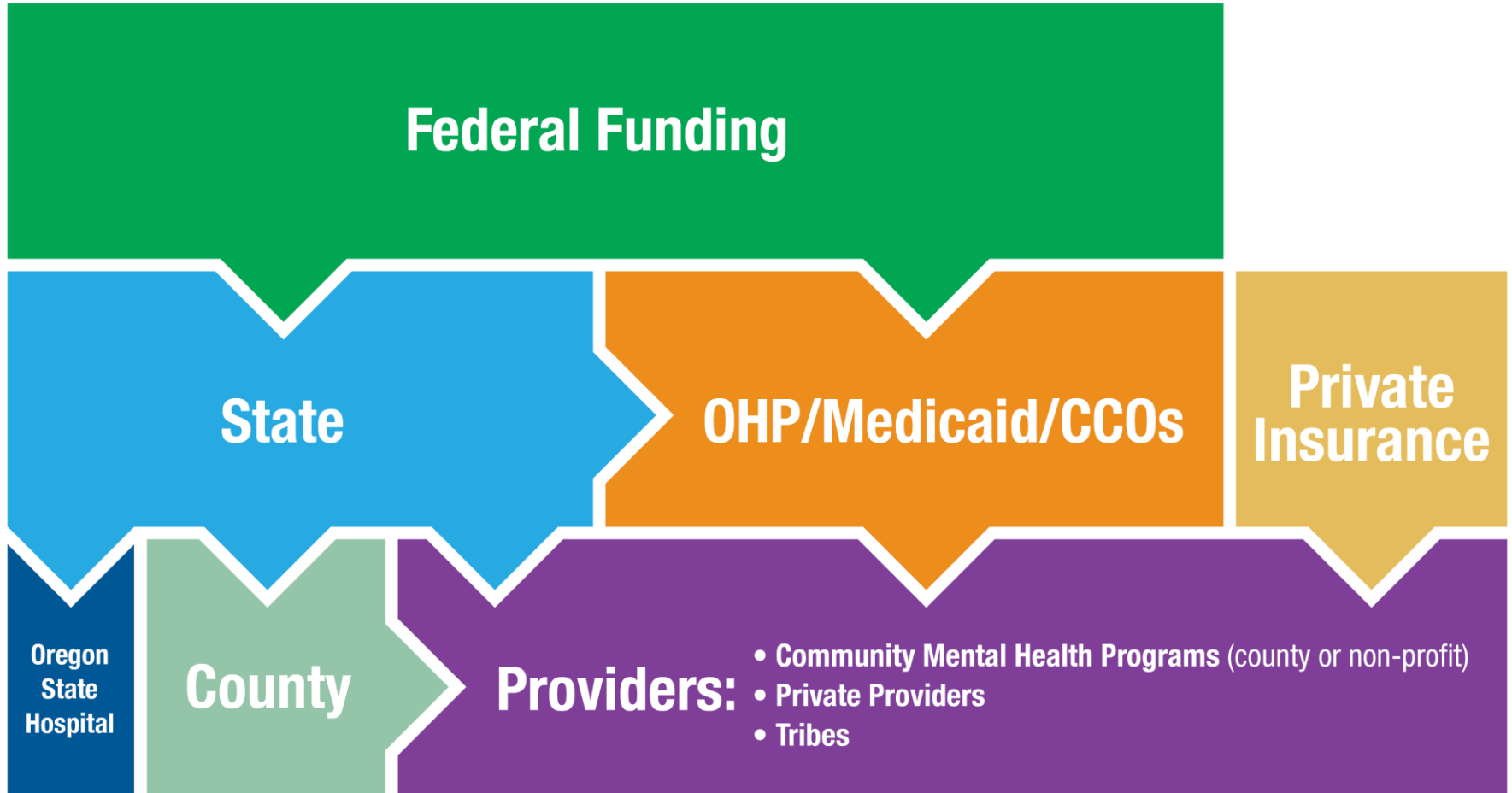
Case Management

- Referral
- Coordination

Maintenance and Recovery Supports

- Peer Services

Behavioral Health Funding Streams



Oregon Health Plan

The Oregon Health Plan provides covered Medicaid benefits to 1 out of 4 individuals in Oregon through Coordinated Care Organizations and directly on a fee for services basis.



Hospital Services



Behavioral Health Care



Oral Health Care



Laboratory tests and X-rays



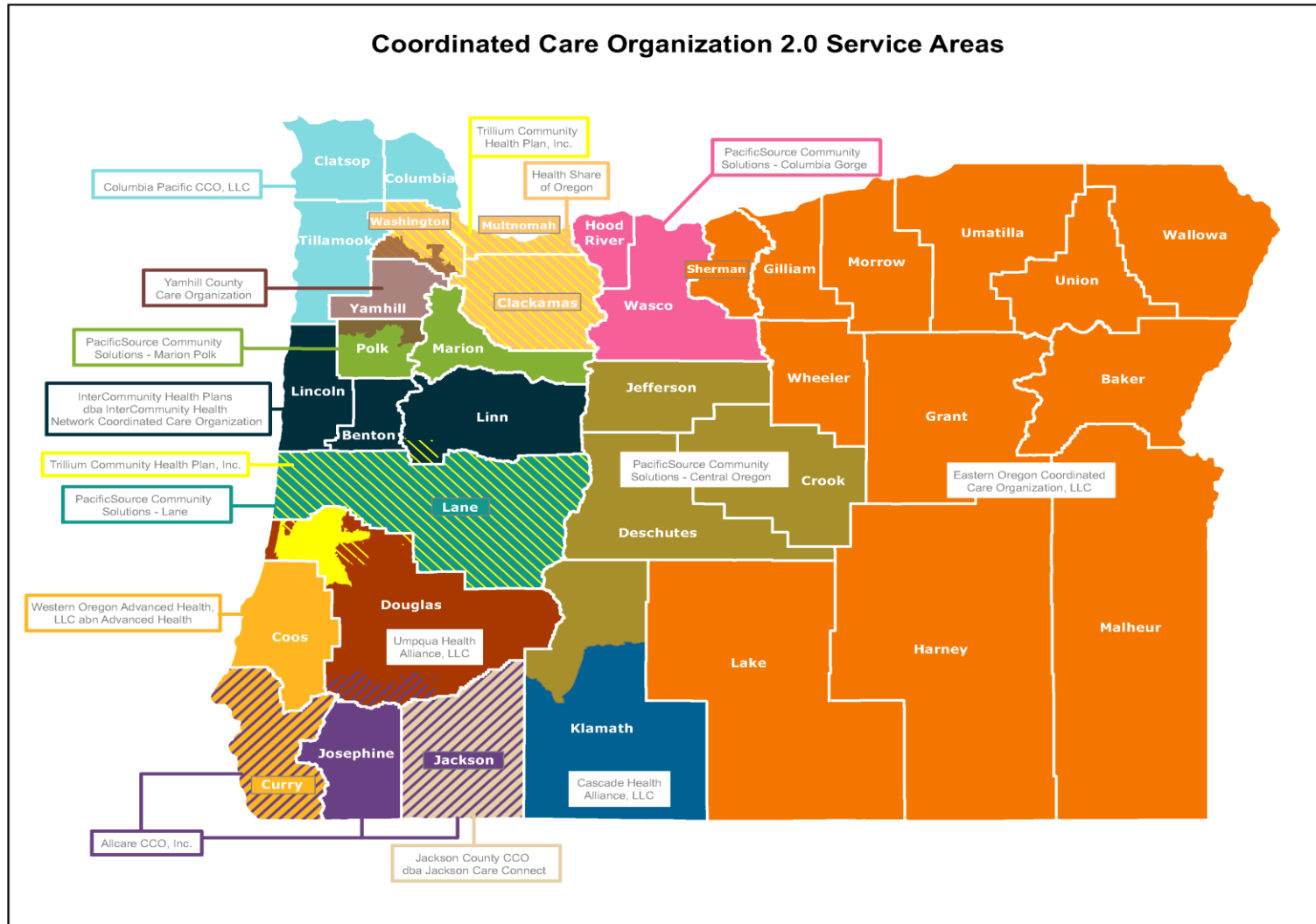
Medical Transportation



Prescription Drugs



Oregon Health Plan - CCOs



The Secretary of State 2019 Audit: Main Findings

Data shortfalls

Workforce shortages

Fragmented delivery system

Inadequate monitoring of spending on county programs

Lack of consistent leadership, vision and governance

OHA's Response

OHA welcomed and agreed with all 22 SOS recommendations.

In our response, we provided context for each finding:

- ✓ Where it fits within OHA values and strategic vision
- ✓ Its intersection with health equity
- ✓ How we're centering the voices of consumers
- ✓ Challenges and barriers to implementation

Thank You

Health
Oregon
Authority