

# County Safety Corridor Pilot Program

## Legislative Report - House Bill 3213 (2019), ORS 811.483

Joint Committee on Transportation  
*December 9, 2022*

Brian Worley, County Road Program Director, AOC

Stacy Shetler, County Engineer, Washington County, County Safety Corridor Advisory Group Chair

Lani Radtke, County Engineer, Marion County

Becky Taylor, Senior Transportation Planner, Lane County



# County Road Safety

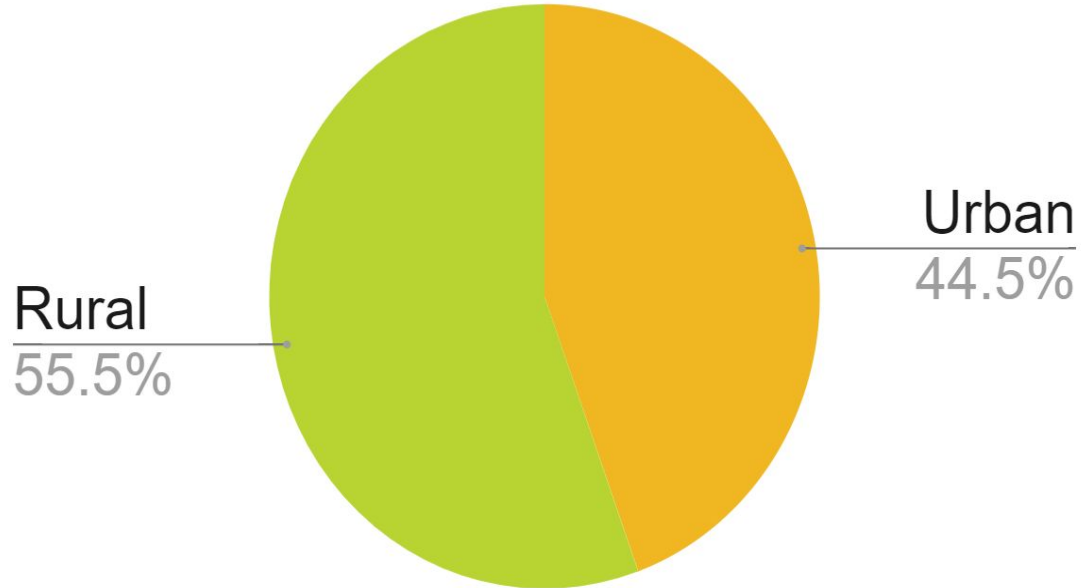
**Goal:** Reduce fatal and serious injury through focused Engineering, Education, Enforcement, Emergency Services, and Equity actions

- 33,000 county road miles (63%)
- 442 fatal and serious injury crashes (22%)
- Risk of dying in vehicle crash 75% higher on rural road than urban road

## Rural Road Challenges

- Limited cell phone reception
- Longer emergency response time
- Simpler roadway infrastructure
- Risky driver behaviors

## Urban and Rural Fatalities



# County Safety Corridor Pilot Program

---

ODOT has seen success in reducing fatal and serious injury crashes, but historically, safety corridors including double traffic fines were only allowed on ODOT highways.

**HB 3213 (2019)** directed ODOT to establish a county safety corridor pilot program and appoint members to a County Safety Corridor Advisory Group.

- Select up to 5 counties to participate in the pilot.
- Establish objective criteria for designating a county safety corridor.
- Establish content requirements for mandated reports to the Legislature (Due 2022/2024).
- Establish requirements for the county safety corridors, including:
  - Regular community engagement
  - Public outreach
  - Heightened enforcement
  - Engineering improvements
  - Infrastructure investments

# What is a County Safety Corridor?

- A two to 10-mile strip of road with severe safety concerns and high crash rates
- Additional law enforcement attention and double traffic fines
- An interim measure in addition to long-term safety improvements
- An education and outreach campaign



**Stacy Shetler**  
County Engineer, Washington County  
County Safety Corridor Advisory Group Chair

# Making Safety Corridors Fit County Roads

The Advisory Group staffed by AOC and ODOT has met nine times since 2020 to establish the program and approve the two pilot programs to date, Marion and Lane counties.

## Advisory Group Members:

- Two members representing counties
- Two members representing ODOT
- One member representing law enforcement
- One member representing Fire and EMS

## Advisory Group Resources:

- A list of eligible roads using ODOT's OASIS Tool
- Example calendars, implementation plans, & bylaws
- Guides and templates for legislative reports



# Marion and Lane County Pilot Programs

Two county pilot programs have been approved to-date

## Marion County - McKay/Ehlen Rds

- Engineering
- Enforcement

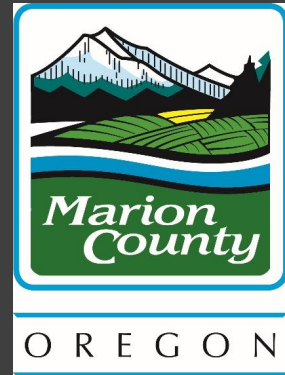
## Lane County - London Rd

- Equity
- Education
- Emergency Response

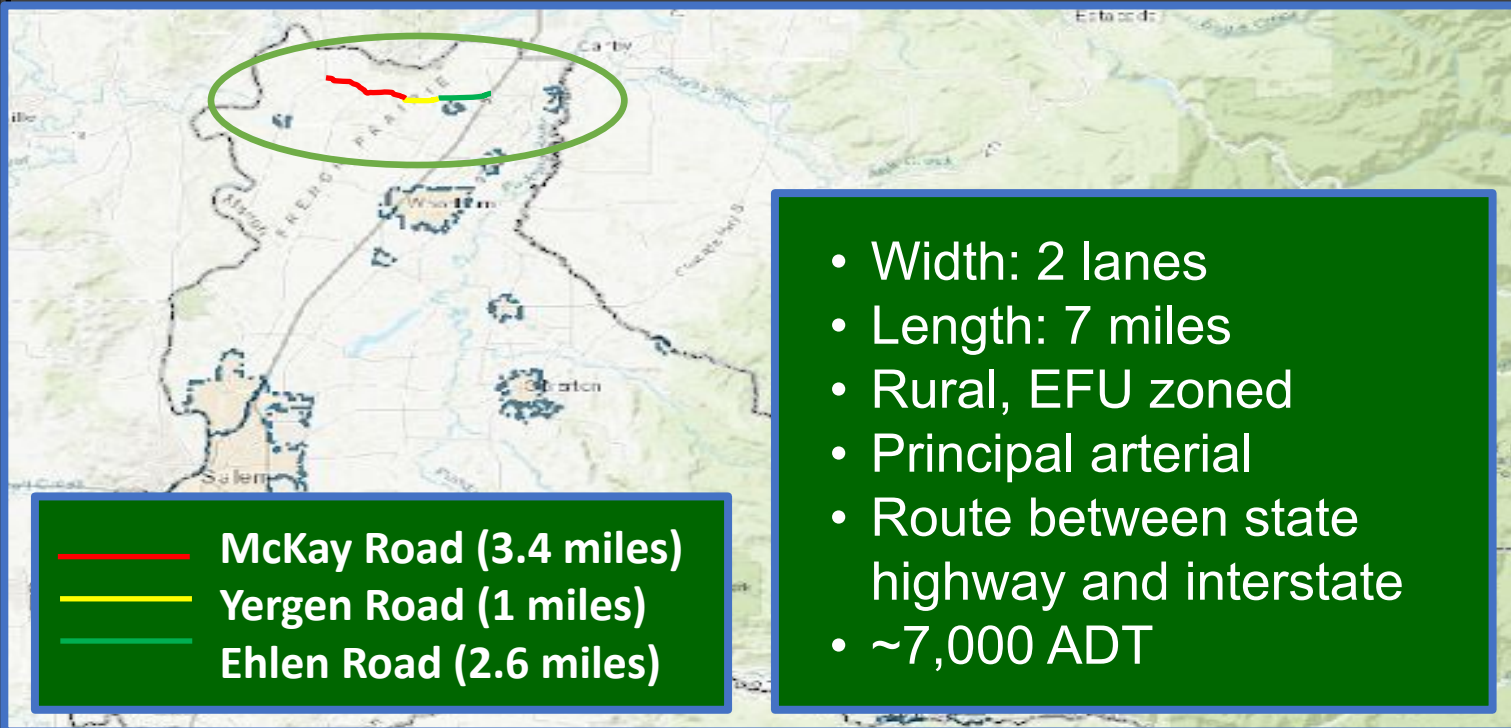


# Marion County

## McKay / Yergen / Ehlen Road Corridor



Lani Radtke  
County  
Engineer





# McKay / Yergen / Ehlen Road Corridor



- Multiple horizontal and vertical curves
- Multiple intersections
- 55 mph posted speed for most, transitions to 45 mph and 35 mph at interchange
- Volumes and speeds may be increasing due to Newberg-Dundee Bypass



# Problem Identification

- Some of Marion County's highest crash rates
  - Fatalities and severe injuries
  - Over twice the crash rate expected on ODOT facilities
- Crash trends found in analysis
  - Crossing centerline
  - Failure to stop/yield at intersections
  - Excessive speeds
- Public outcry for improvements, Commissioner support

# Safety Corridor Designation

- 3/5/2020 – State Advisory Group approved designation
- 2/3/2021 – Board order passed for safety corridor designation
- 2/9/2021 – Safety Corridor signage installed



# Engineering - Safety Enhancements



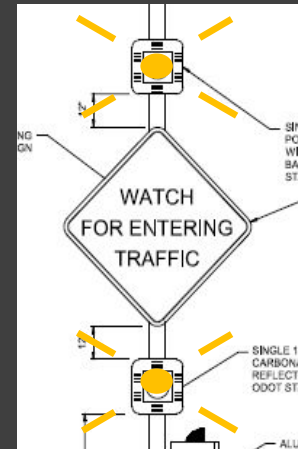
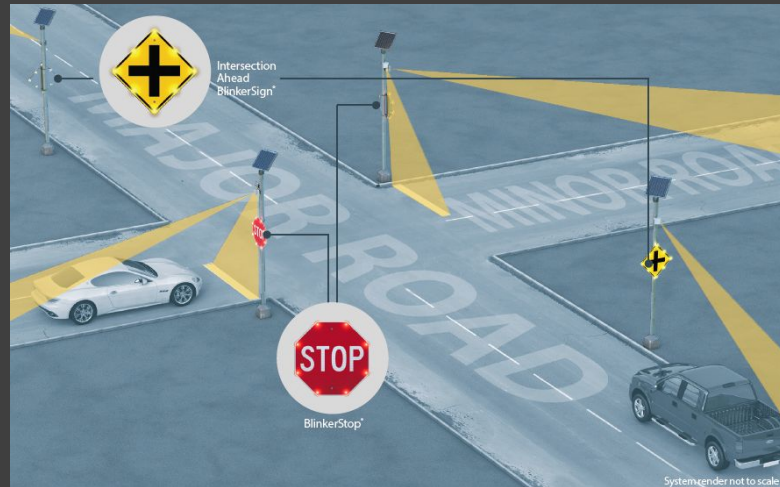
- Centerline rumble strips
- Wider striping
- Pavement legends
- Larger, reflective signs
- Additional signage
- Vegetation removal
- Reflectors at guardrail



**THANK YOU TO OPERATIONS  
AND ENGINEERING STAFF!**

# Engineering - Safety Enhancements

- Installed intersection street lighting
- Installed four speed feedback signs
- Installed intersection conflict warning system



# Engineering - Future Enhancements

- Received \$3M ARPA funding for safety median project thanks to Representative Jessica George
- ODOT ARTS projects recommended for 2024-27 STIP
  - \$5.7M Ehlen / Butteville Rd roundabout
  - \$900k corridor-wide systemic improvements (enhanced curve warning signs, delineators, speed feedback signs, shoulder rumble strips)



# Enforcement

- Created awareness about safety corridor
- Created awareness before saturation patrols
- Increased enforcement: Sheriff's Office conducted several saturation patrols

**THANK YOU TO SHERIFF'S OFFICE  
AND BOARD OF COMMISSIONERS OFFICE!**

# Lane County

## London Road Safety Corridor

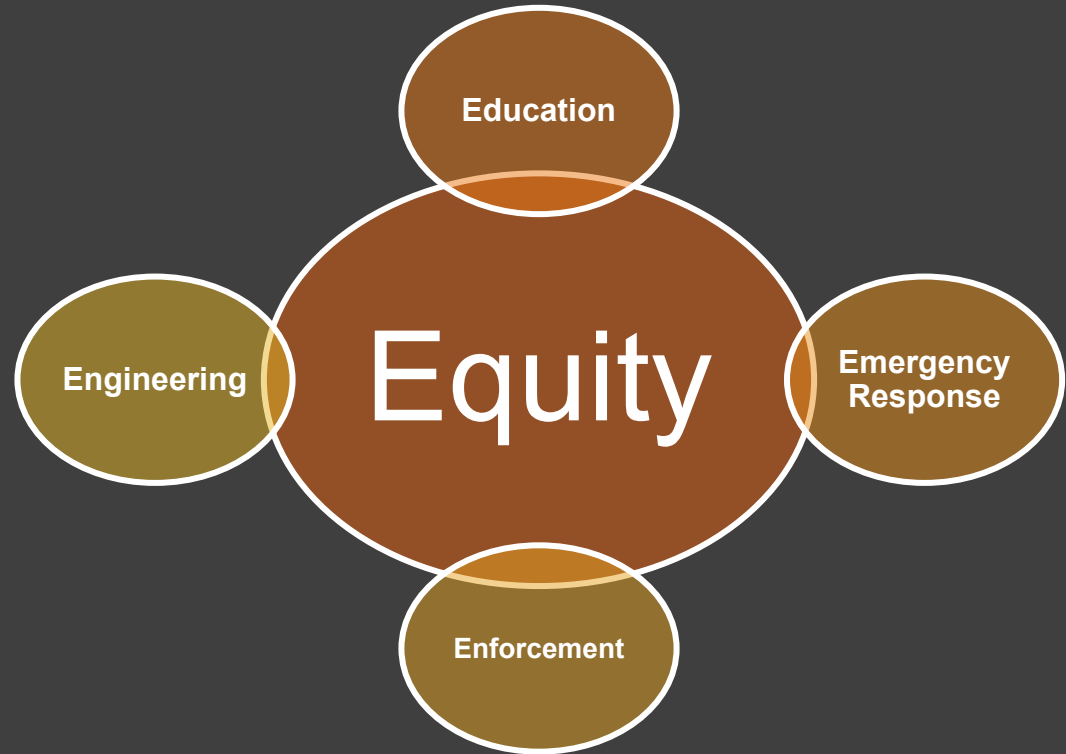
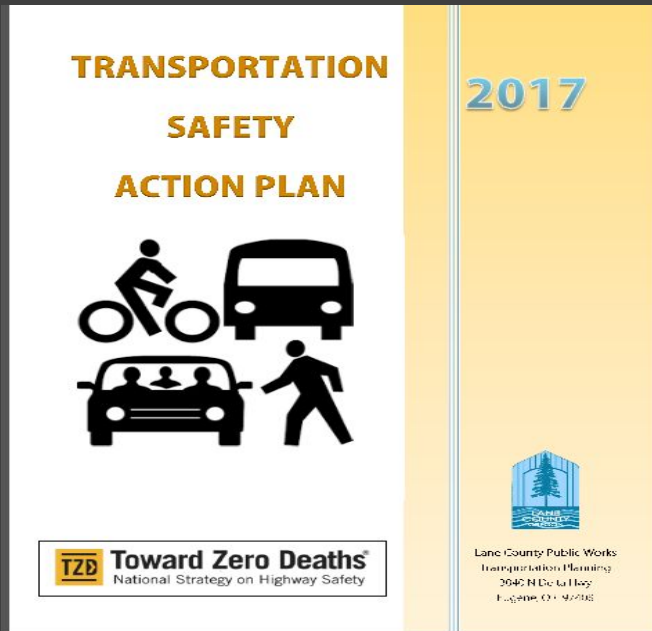


**Becky Taylor**  
Senior  
Transportation  
Planner



- 2/18/21 - State Advisory Group approved designation
- 5/4/21 - Lane County Board designation
- 7/4/21 - Effective
- 7/5/23 - Decommission

# Lane County Safety Priorities



# Equity

**Equity** (per corridor by census data, not per crash since not available in crash records)

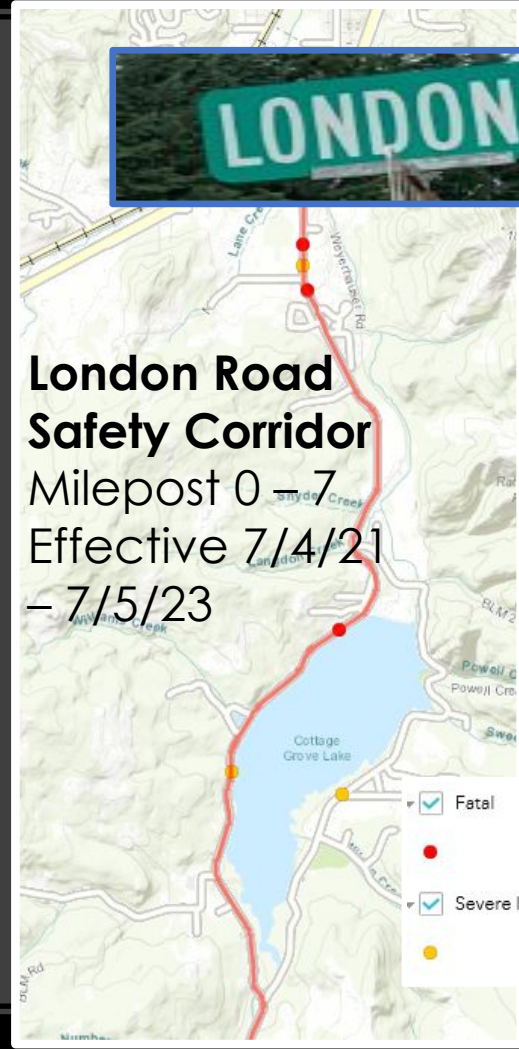
**Vulnerable Populations:** <20%=0; 20-50% = 1; >50%=2 (0.5 scores based on populations partially within corridor)

Elderly	Disabled	Minority	LEP	Poverty
1	2	0	0	0



## London Road Safety Corridor

Milepost 0 – 7  
Effective 7/4/21  
– 7/5/23



- Fatal
- Severe Injury

# Education

## London Road DUI Prevention

**99%** WILLING TO BE A DESIGNATED DRIVER

**99%** WOULD CALL A FRIEND FOR A RIDE

**92%** WOULD CALL A CAB

[www.LaneCountyOR.gov/LRSC](http://www.LaneCountyOR.gov/LRSC)



## LONDON ROAD SAFETY CORRIDOR

### BE SAFE

The first 7 miles of London Road (from Latham Road to the southern end of Cottage Grove Reservoir Road) has been designated a Safety Corridor because multiple people have been killed or seriously injured in traffic crashes.

### TRAFFIC FINES DOUBLE

This means fines for traffic violations will be doubled – to encourage people to drive at safe speeds and save lives.

**\$875**

ENHANCED FINE  
CLASS A VIOLATION

**\$525**

ENHANCED FINE  
CLASS B VIOLATION

**\$325**

ENHANCED FINE  
CLASS C VIOLATION

**\$225**

ENHANCED FINE  
CLASS D VIOLATION

### WATCH YOUR SPEED

The maximum speed is 55 mph, but slower speeds may apply based on roadway conditions. Violating the Basic Rule speed could include driving at a speed greater than is reasonable and prudent.

### MAKE A PLAN

Everyone knows someone who wants them to get home safe. If you're planning to drink, don't drive. Use a rideshare service or a designated driver.

**EFFECTIVE FROM  
JULY 4, 2021 – JULY 5, 2023**



For more information, contact Lane County staff: Becky Taylor, Senior Transportation Planner, [beckytaylor@lanecounty.gov](mailto:beckytaylor@lanecounty.gov), 541-682-6932. Visit the project website at: [www.lanecounty.gov/LRSC](http://www.lanecounty.gov/LRSC)

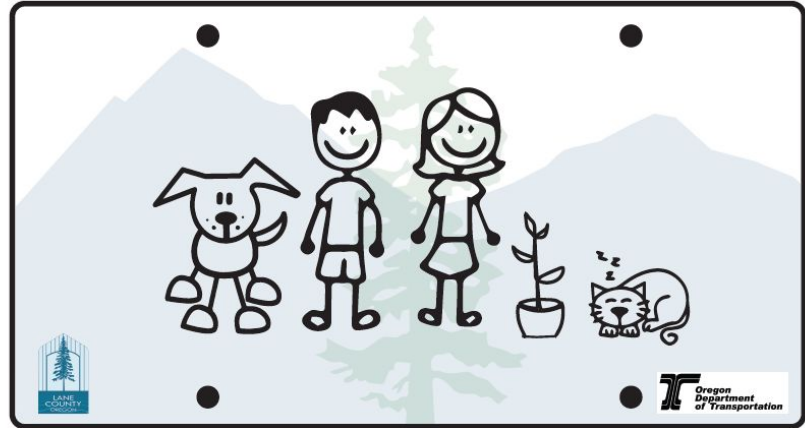


# Emergency Services

## South Lane Fire District

- Chief John Wooten, Advisory Committee Chair
- Distributed yard signs at fire station

**WE WANT YOU HOME SAFE**



**DRIVE SAFELY**

# Successes and Challenges

- Successes
  - Short-term reduction in crashes
  - Community support for safety corridors
- Challenges
  - More time is needed to evaluate effectiveness
  - County safety corridors lack dedicated resources, need federal and state grant funding
  - Doubled traffic fines cannot sustain traffic patrols

# Next Steps



## Pilot Counties:

- Continue monitoring and analyzing crashes
- Continue to develop education opportunities
- Continue applying for safety infrastructure grant funding

## Advisory Group:

- **Continue open call for pilot participants.** Particular focus from smaller, rural counties outside of the Willamette Valley.
- Evaluate possible recommendations for legislation

Uphold HB 3213 requirements, submitting second of two reports by September 2024. The program is currently scheduled to sunset in January 2026.

# Questions

**County Staff:**

**Stacy Shetler, P.E.**

**Chair County Safety Corridor Advisory Group**

County Engineer, Washington County

[stacy\\_shetler@washingtoncountyor.gov](mailto:stacy_shetler@washingtoncountyor.gov)

**Becky Taylor**

Senior Transportation Planner, Lane County

[becky.taylor@lanecountyor.gov](mailto:becky.taylor@lanecountyor.gov)

**Lani Radtke, P.E.**

County Engineer, Marion County

[lradtke@co.marion.or.us](mailto:lradtke@co.marion.or.us)

**AOC Staff:**

**Brian Worley**

Association of Oregon Counties

County Road Program Director

[bworley@oregoncounties.org](mailto:bworley@oregoncounties.org)

**Jordan Cole**

Association of Oregon Counties

County Road Program Policy

Analyst

[jcole@oregoncounties.org](mailto:jcole@oregoncounties.org)

**For more information:**

**[oregoncounties.org/transportation-safety](https://oregoncounties.org/transportation-safety)**