

**LC 1811 -  
Green Infrastructure  
Equity**



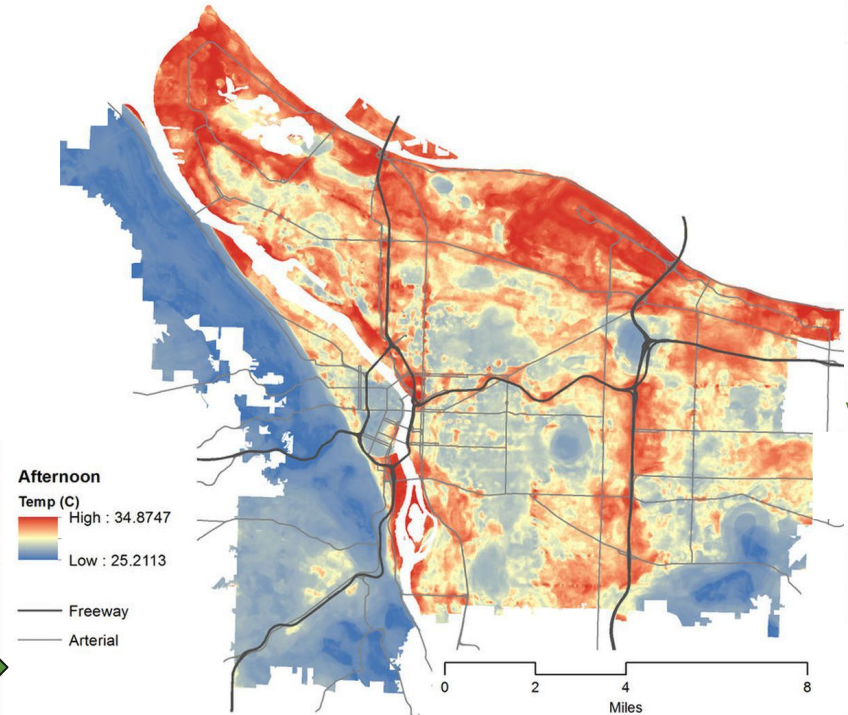
# WHY DO WE NEED MORE GREEN INFRASTRUCTURE?

Resilience: Mitigating the Heat Island Effect

Historic disinvestment in environmental justice communities

Changing climate leading to tree and plant impacts

Creating a rural-urban continuum of jobs and benefits



# WHAT ARE THE BENEFITS OF GREEN INFRASTRUCTURE

Reduces temperatures on outdoor surfaces and in homes

Improves sequesters carbon and improves air and water quality

Improves mental health

Creates community-scale jobs and opportunities to strengthen communities



# POLICY ACTIONS

## Community Green Infrastructure Grant Program



Funding to support green infrastructure projects and workforce development

## Ensuring Sufficient Nursery Stock for Projects

Incentivizing partnerships between Oregon nurseries and communities undertaking green infrastructure projects

## Tree Canopy Assessment



Visualization of tree canopy and tree canopy health in developed areas

## Emerald Ash Borer Assistance

Technical and financial assistance for response and recovery