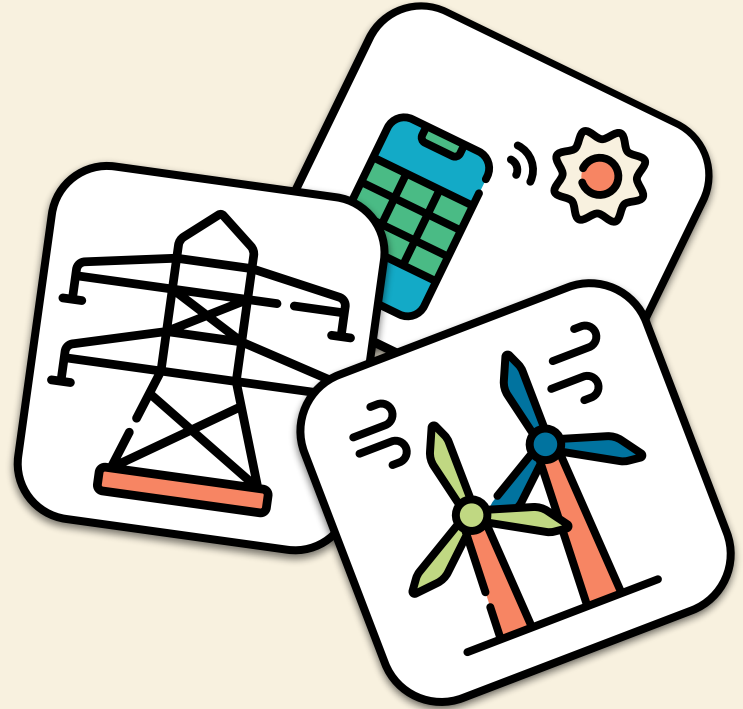


Oregon Energy Siting Policy Table

—
**HOUSE ENR
UPDATE**






PURPOSE OF SITING CONVERSATION

Identify strategies for Oregon energy siting processes that reduce conflict and balance state energy goals with communities, natural resources, and the environment.

OUTCOMES

- Bring together a broad group of stakeholder interests
 - People feel heard and valued
 - Build relationships and common ground across stakeholder groups
 - Turn strategy ideas into policy as appropriate
- 

STAKEHOLDER GROUPS ENGAGED

DEVELOPERS

Values viable and efficient paths for renewable energy development

**LAND USE &
NATURAL RESOURCES**

Values natural resources and the land and water that produce them

UTILITIES

Values a reliable, affordable electricity system

LOCAL GOVERNMENT

Values good governance and doing the best for their constituents

CONSERVATION

Values wildlife and the ecosystems they inhabit

**COMMUNITY &
SOVEREIGN VOICES**

Values community voices and sovereign nations in decision-making

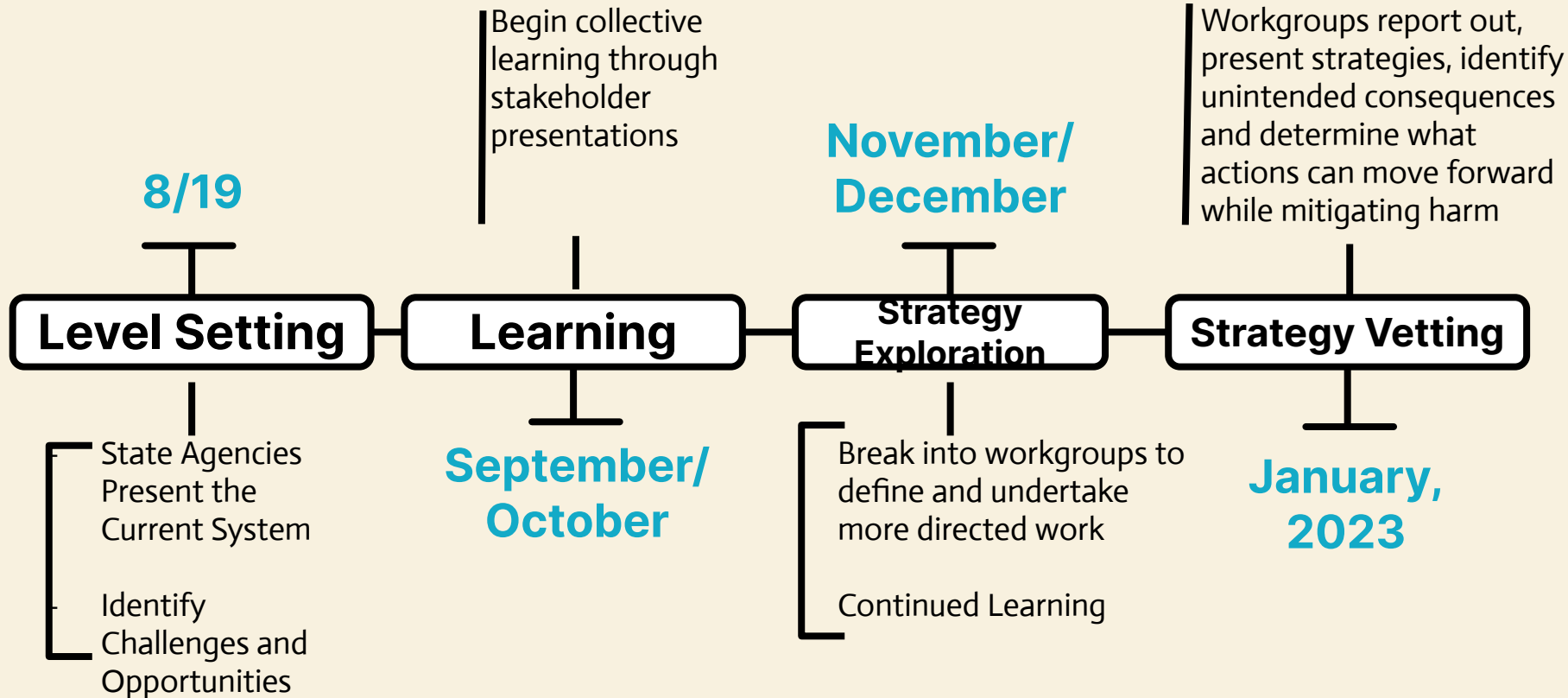
LABOR

Values good, well-paying jobs

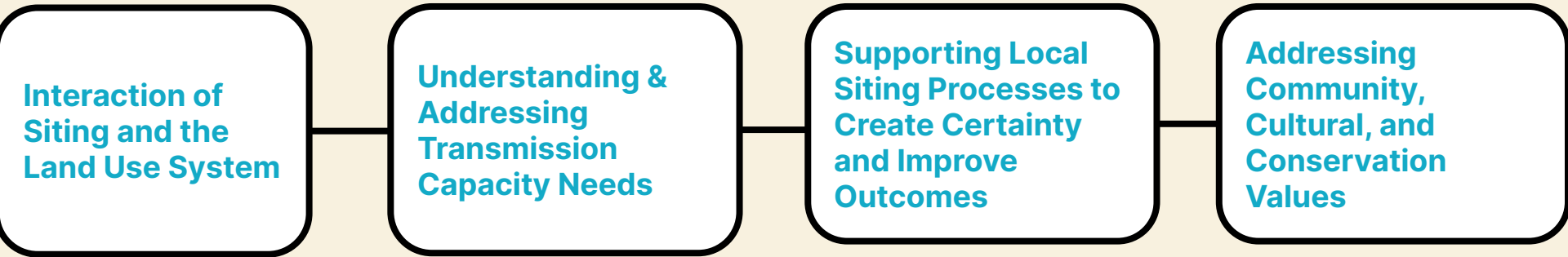
**ENVIRONMENT/
ENERGY**

Values sound energy policy

TIMELINE



WORKGROUPS



INTERACTION OF SITING AND LAND USE

Update Oregon's land use system, goals, and exception process to help meet Oregon's renewable energy goals while still recognizing the value and place-based nature of other land uses in the reality of a changing climate, the need for certainty for projects, resource-land-based industries, and the opportunity to support multiple land uses by identifying places for siting on marginal lands or through dual use methods.

Key Questions, Challenges and Opportunities

- How do we increase certainty for all participants?
- How can we identify areas for preferred energy development that minimize impacts on goal resources and communities?
 - Are there opportunities to streamline processes in areas with lower impacts? What processes and perspectives are needed to identify such areas?
- How to balance the desire to protect irrigated farmland with the realities, in some places, of increased water regulation in a water-scarce future.
- How can we fix the exceptions process so that for renewable projects the process is really only for exceptions, not the majority of projects
- How can we navigate the compromises that need to be made between our current system and process and where we need to go to accomplish our climate goals

SUPPORTING LOCAL PROCESSES

Improve resources and capacity for local governments in the siting and mitigation in ways that avoid and minimize impacts and create benefits for natural resources, wildlife habitat, and communities, create process certainty, and expedite projects.

Key Questions, Challenges and Opportunities

- What is currently working well from the perspective of the local governments in the siting and mitigation process and where are the bottlenecks/redundancies/pressures in the process?
- Do local governments in smaller rural counties need support from a technical standpoint or staff bandwidth and do volunteer planning commissioners need special support and training around conditional use permits/siting?
- What are the expectations of local governments in participation in siting processes within the jurisdiction of EFSC? Is the current division between local and EFSC still the right one?
- How do we create certainty for development of renewable energy projects with an eye on expediting those projects and permit timelines? What is needed to accomplish this goal?
- How can mitigation efforts be improved and how can local values and needs be best taken into account?
- How can community feedback and benefits be incorporated in an equitable and timely manner?

TRANSMISSION CAPACITY NEEDS

Address transmission capacity constraints through a proactive approach to leverage technology opportunities, planning processes, integrated strategies, and reduce local conflict.

Challenges

- Change of electricity generation from a few large always-available facilities to many smaller intermittent facilities throughout Oregon and other states due to the need to reduce greenhouse gas emissions by 80% in 2030.
- Increased demand, especially in currently underserved areas, due to electrification of transportation and buildings in response to the reductions in the Climate Protection Program.

Opportunities

- Consider greater participation in regional coordination activities, possibly including a Regional Transmission Organization as discussed in the “Regional Transmission Organization Study: Oregon Perspectives.”
- Consider alternatives to building new transmission lines.
- Make the permitting of new lines more efficient while ensuring sufficient early outreach, taking Environmental Justice into account.



ADDRESSING COMMUNITY, CULTURAL, AND CONSERVATION VALUES

Ensure early and meaningful tribal and community engagement, education, and accessibility in siting to better understand and respond to local community, cultural, and conservation values systems in ways that not only improve but streamline process.

Key Questions

- How can community be engaged from the start?
- How can we not only improve but streamline processes?
- How can we identify community benefits specific to community needs and help realize them?
- How are the cumulative impacts of multiple projects accounted for when permitting/ mitigation is project specific (ex- big game habitat)?
- What inputs do we need from a community to know they've been heard and been valued?
- How do we ensure projects hire and train local workers?
- How do we create the process for developers to engage community meaningfully?
- How do we align timelines to allow for community needs, education and benefits to be identified?
- How can impacts both positive and negative be measured? – including secondary impacts

WHAT'S NEXT?

**December
9-13**

**Strategy
Exploration**

Workgroups brainstorm strategies that address key questions, challenges, and opportunities

Workgroups identify venues, mechanisms, timelines, viability, and unintended consequences of strategies

**Strategy
Definition**

**January
6-13**

**January
20-27**

**Strategy
Vetting**

Workgroups report out on strategies and full table vets venues, mechanisms, timelines, viability, and identifies new unintended consequences/mitigation

Identify next steps for specific strategies/venues/mechanisms that the full table decides to move forward on both short and long term timelines

**Identify
Next Steps**





Oriana Magnera

—
720-530-8401

oriamagnera@verdenw.org
—

