

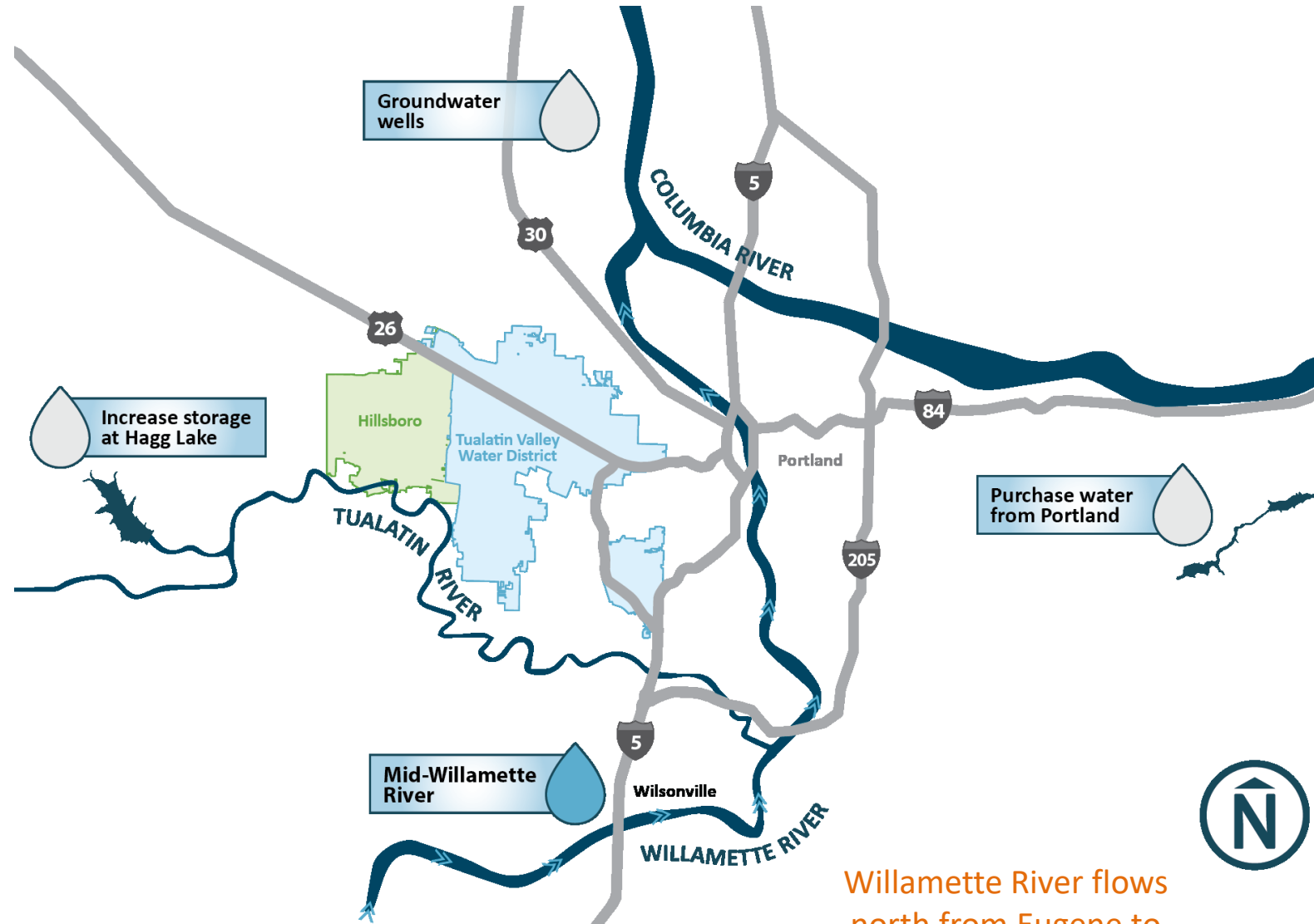
Willamette Water Supply

Our Reliable Water

December 2022 Oregon Legislative Visit on
the Willamette Water Supply Program

TVWD and Hillsboro selected the Willamette River after a multi-year technical study and public input

- ✓ Lower cost – less impact on rates
- ✓ Excellent water quality
- ✓ Ownership
- ✓ Reliable supply
- ✓ Fewer environmental impacts



Willamette River flows north from Eugene to the Columbia River.

Willamette Water Supply System (WWSS) Overview

1. Willamette River intake, located in Wilsonville
2. New state-of-the-art water treatment plant located in Sherwood
3. 30+ miles of large diameter transmission pipeline delivering water to TVWD, Hillsboro and Beaverton
4. Water storage tanks
5. Fully operational in mid-2026



Water Treatment Plant Will Provide Multiple Protection Barriers

Constituent	Barriers Provided by WWSS WTP				
	Ballasted Flocculation	Intermediate Ozonation	GAC Filtration	UV Disinfection	Chlorine Disinfection
Turbidity / Particles	★		★		
Pathogenic Microorganisms		★	★	★	★
Tastes and Odors		★	★		
Trace Organics		★	★		
Emerging Contaminants		★	★	★	

The Willamette Water Supply System is Under Construction Now

- Construction spend will exceed \$1 million per day for two years
- 84% of spend to date has gone to local businesses
- Buy-American policy provides further domestic economic benefits



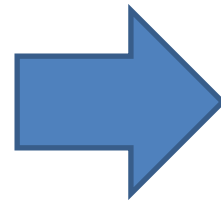
Recent Bid Results Brought Reality of Recent Inflationary Effects to Light

Reservoir and Related Pipeline

- Estimated cost: \$117M
- Bid price: \$143M

Water Treatment Plant

- Estimated cost: \$292M
- Bid price: \$427M



\$315 million increase for customers

Total project costs rise from \$1.3 billion to approximately \$1.6 billion

WWSS was on Budget Until Global Inflationary Pressures Pushed Costs Upward



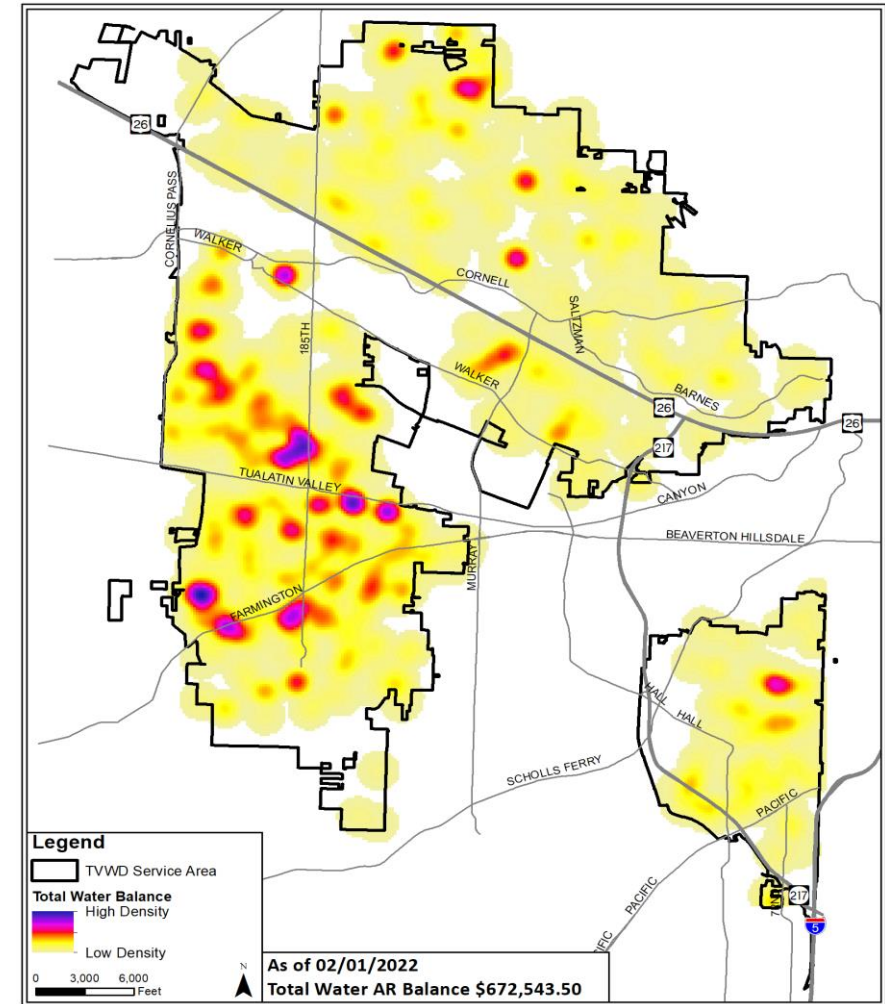
- WWSS inflationary costs are driven by global forces
 - Supply chain interruptions
 - Covid-19 uncertainties
 - Labor shortages
 - Trucking and shipping fuel costs
 - Increased cost of materials

Residential Customer Impact is Significant

- TVWD, serves 220,000 people in Washington County
 - Inflation is estimated to cost the average TVWD residential customer \$237 per year in 2026
 - The typical TVWD residential customer will pay \$1,146 per year in 2026
 - Hillsboro and Beaverton residential customers will see similar cost increases in proportion to their ownership share of WWSS
 - All school and park districts and businesses served by the three agencies will see similar increases in the cost of their water

Higher Water Bills Will Impact those Least Able to Pay Hardest

- In March 2020 TVWD, Hillsboro and Beaverton had \$1,544,333 in unpaid aged (60 days or older) residential water utility bills
- In December 2021, aged unpaid bills grew to \$4,200,465
- There is a strong correlation between poverty and unpaid water utility bills



WWSS Net Environmental Benefits Strategy

- Early and often coordination with ODFW
- Early Tribal Government guidance
- Minimize wetland impacts: resulted in 1.6 acres of impact
- First Thermal Trading Plan for water withdrawal to address temperature impacts
- Community Engagement and Adaptive Management



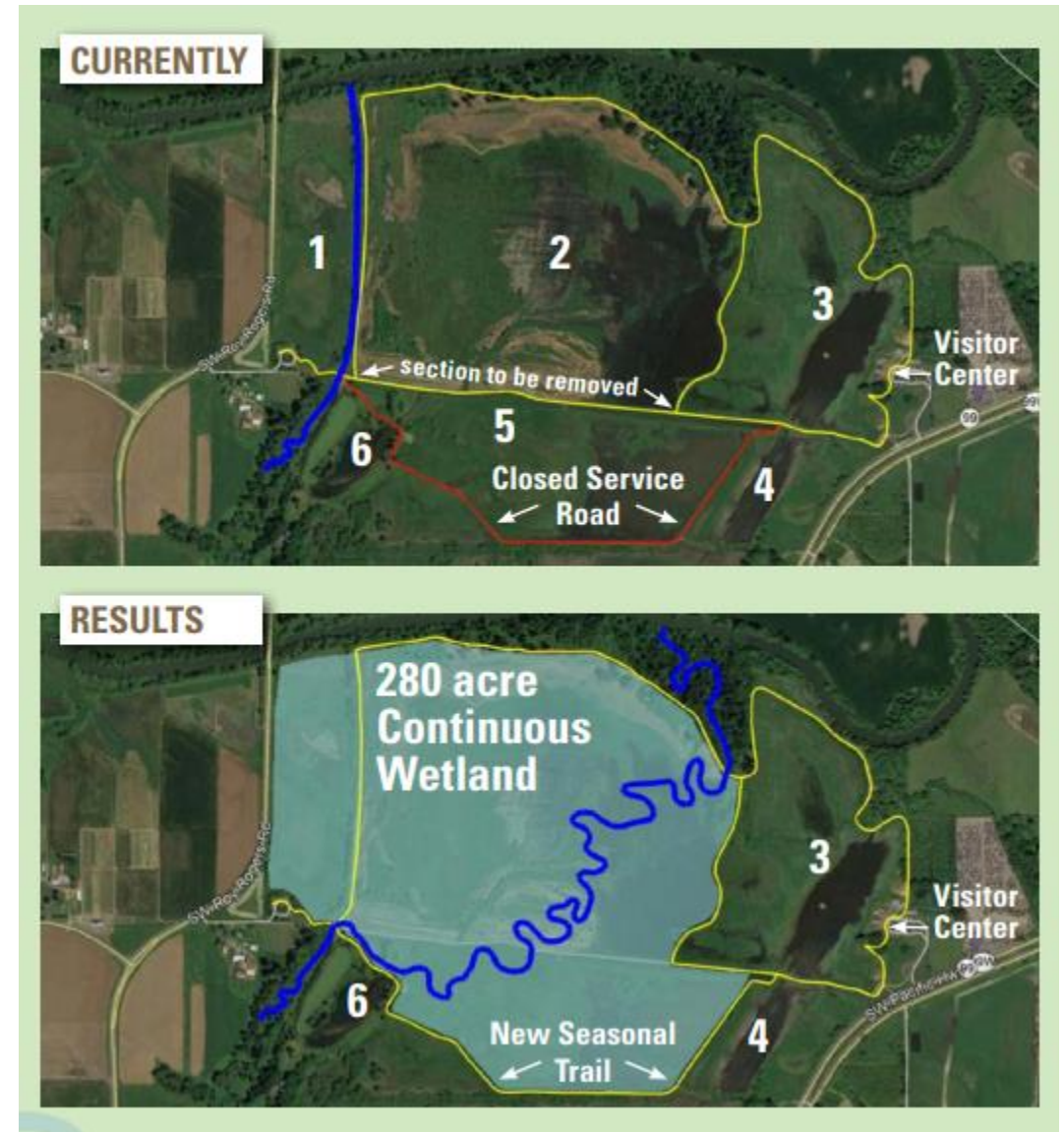
Molalla River State Park: Floodplain Forest and Riparian Area Health Restoration Projects

- Collaboration with Molalla River Watch
- Site at confluence of Molalla, Pudding & Willamette Rivers
- 450 acres of floodplain forest and channels within 2-year inundation zone
- Removal of knotweed and other invasive species
- Replanting of native trees to increase stream shading



Chicken Creek Habitat Project: Floodplain Resiliency and In-Stream Habitat Restoration

- Collaboration with Friends of the Tualatin Wildlife Refuge, Clean Water Services
- Restoration of hydrologic connectivity within creek
- Restoration of lower reach of creek to more historical alignment through former floodplain & associated wetlands
- Restoration of 2 miles of stream channel & 280 acres of floodplain
- Reducing sediment and nutrient inputs to Tualatin River



WTP Site Environmental Protection




Kolk pond with future viewing platform



Community Engagement and Adaptive Management

The screenshot shows the Willamette Water Supply website. The header includes the logo "Willamette Water Supply Our Reliable Water", a "Sign Up to Receive Email Updates" button, social media icons for Twitter and YouTube, and a search bar. A navigation menu contains links for "MID-WILLAMETTE RIVER", "PROJECTS", "QUICK FACTS", "NEWS ROOM", "CONSERVATION & PREPAREDNESS", "COMMUNITIES", "BUSINESS OPPORTUNITIES", and "CONTACT".

ORENCO WOODS NATURE PARK



The City of Hillsboro currently has only one source of water—the Tualatin River. To secure a reliable additional source of water, Hillsboro partnered with Tualatin Valley Water District and the City of Beaverton to build the Willamette Water Supply System (WWSS).

PROJECT UPDATES

[Click Here For Project Updates](#) ✓

[Cornelius Pass Road Pipeline Project & OWINP FAQ](#) 📄

THE ORENCO WOODS NATURE PARK WILDLIFE PROTECTION AND ADAPTIVE MANAGEMENT PLAN

Recently, WWSP staff have been working with neighbors and other interested stakeholders to develop the Orenco Woods Nature Park (OWNP) Wildlife Protection and Adaptive Management Plan. The plan

We are Asking Legislators to Act in 2023



- Provide state funding to help moderate the impact of inflation
- Benefits
 - Inflation cost relief for 375,000 homeowners, renters and business water customers living and working in Washington County