



Children's  
Institute

# House Education Committee

Case for Early Care and  
Education

December 7, 2022  
[childinst.org](https://childinst.org)

# Children's Institute: support a unified voice for children

**We organize early childhood voices and providers by:**

- Moving early childhood advocacy from fractured to coordinated and powerful
- Convening the Early Childhood Coalition
- Using equity-based facilitation
- Building relationships and listening
- Demystifying policymaking
- Educating folks across Oregon about the issues





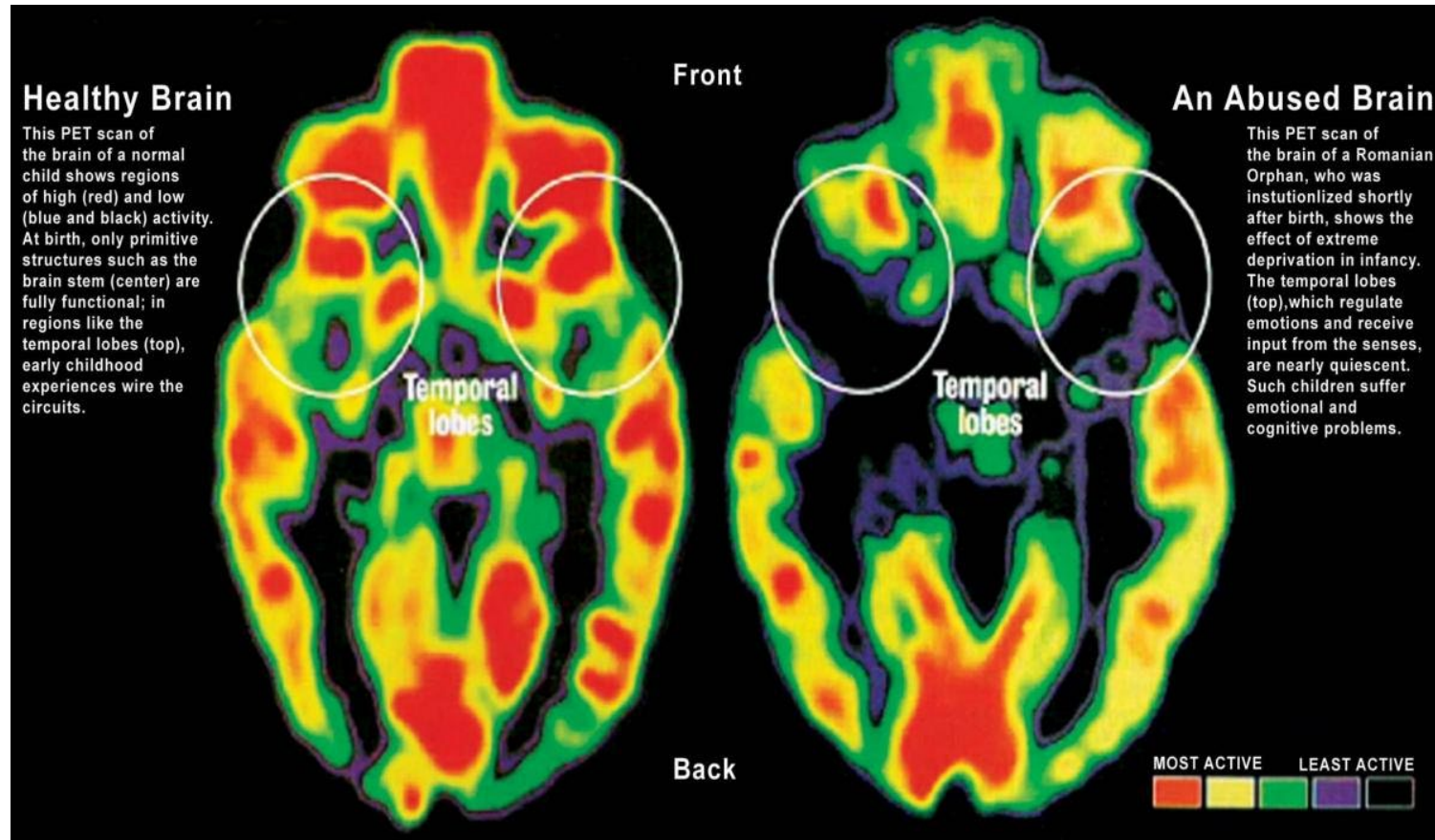
# We believe every issue is a children's issue

**We make connections between early childhood and other sectors by:**

- Coordinating with advocates across health, housing, K-12, higher education, human services, and business
- Developing cross-sector systemic policy solutions
- Elevating early childhood at policy, advocacy, and implementation tables



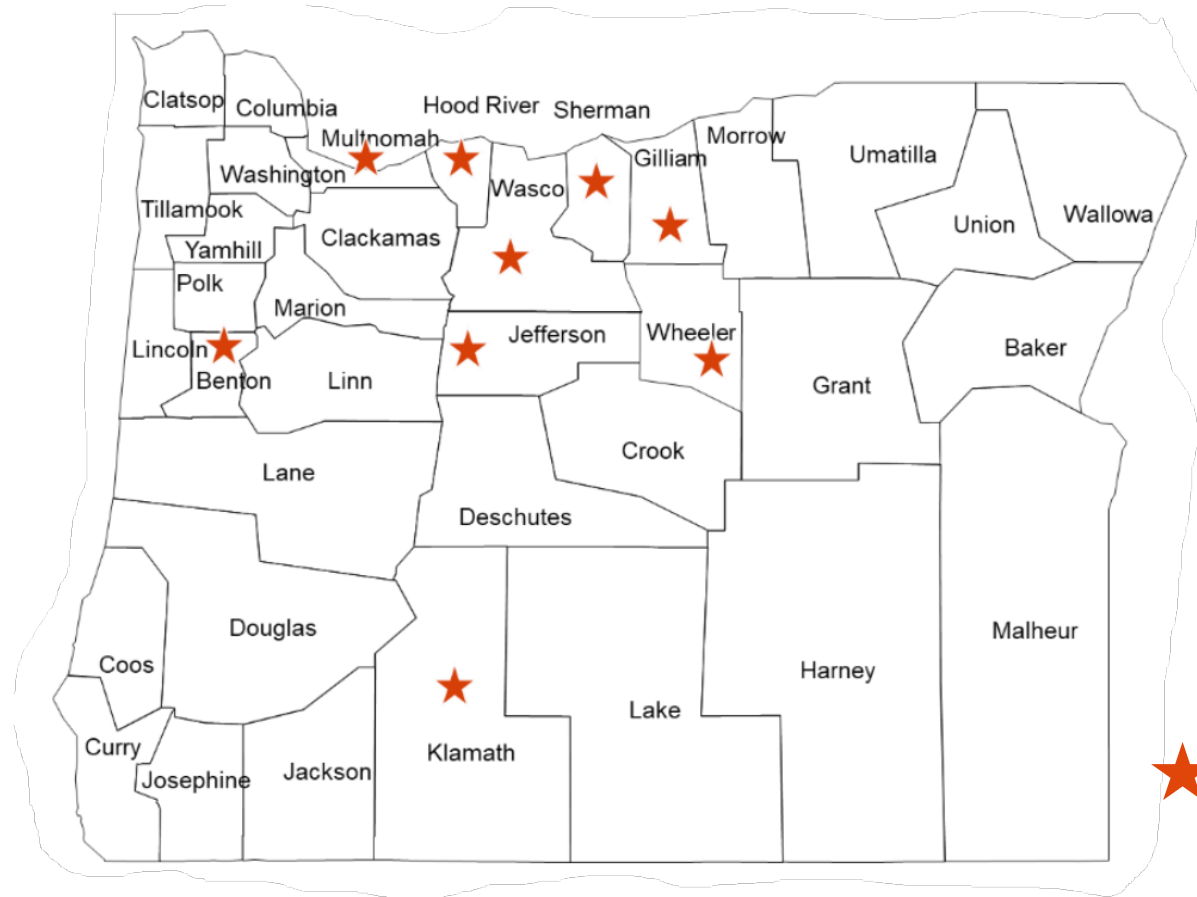
# Neuroscience tells us...



“In high doses, [stress] affects brain development, the immune system, hormonal systems, and even the way our DNA is read and transcribed. Folks who are exposed in very high doses have triple the lifetime risk of heart disease and lung cancer and a 20 year difference in life expectancy.”

-Dr. Nadine Burke-Harris

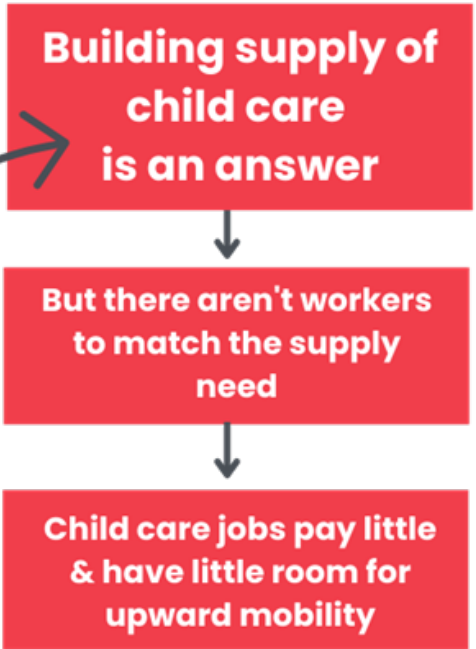
# Status of Early Childhood – Access to Services



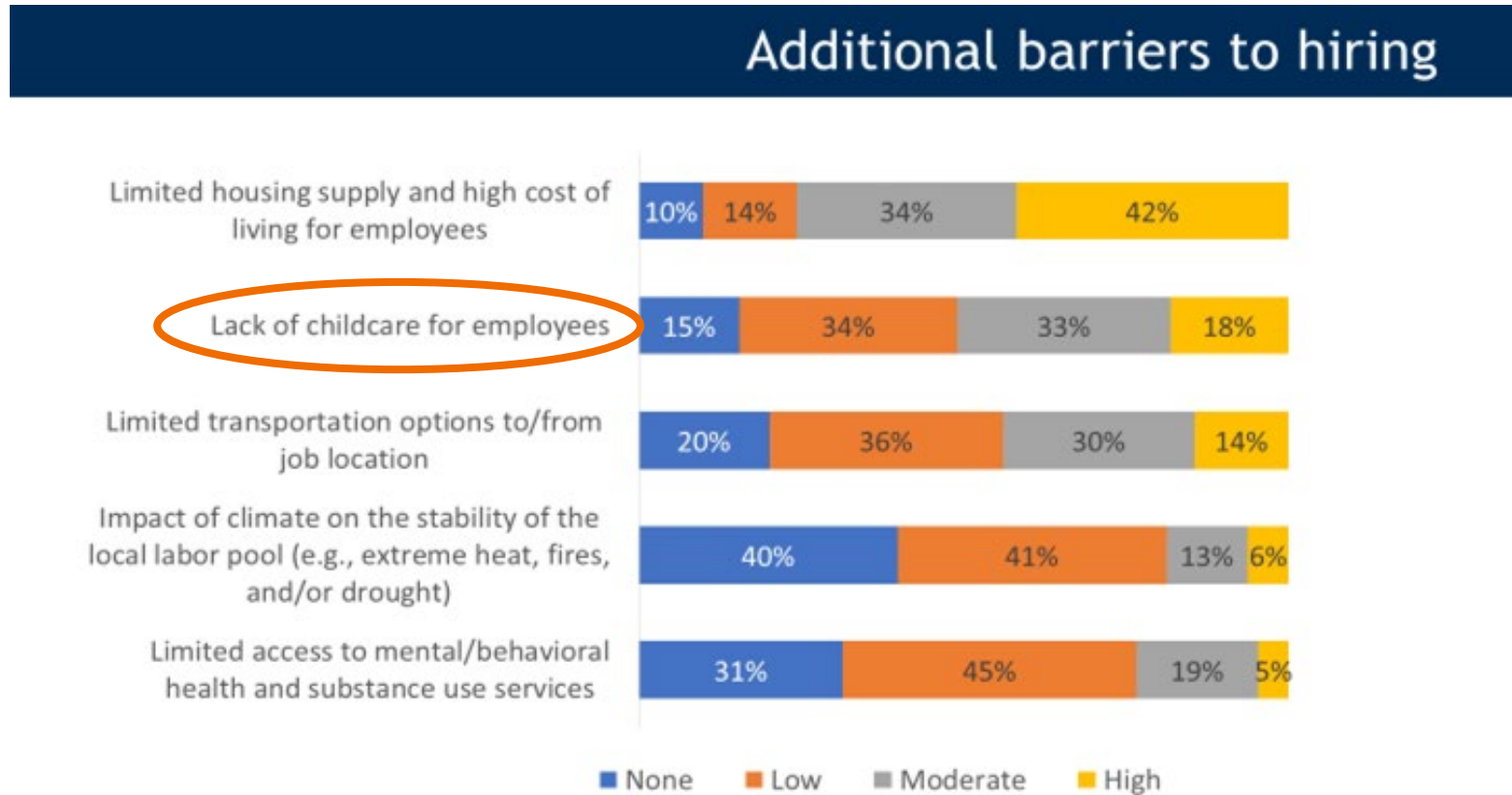
- For 0-2 year olds, every county is a child care desert.
- For 3-5 year olds, only 9 counties are NOT a child care desert.

★ NOT a child care desert for 3-5 year olds





# Businesses need care to hire



# Child care sector is an employer, too

**12,220=** Number of people working in Early Learning & Care in Oregon

**\$12.46** = 2019 Median Hourly Wage for a child care worker in Oregon

**A skilled workforce** = improves outcomes for children and retention of staff

**-116k** = Child care jobs lost nationally since Feb 2020

**89%=** Percentage of child care jobs today compared to Feb 2020





# Oregon can make progress



Children's  
Institute

# Facilities

## We need to:

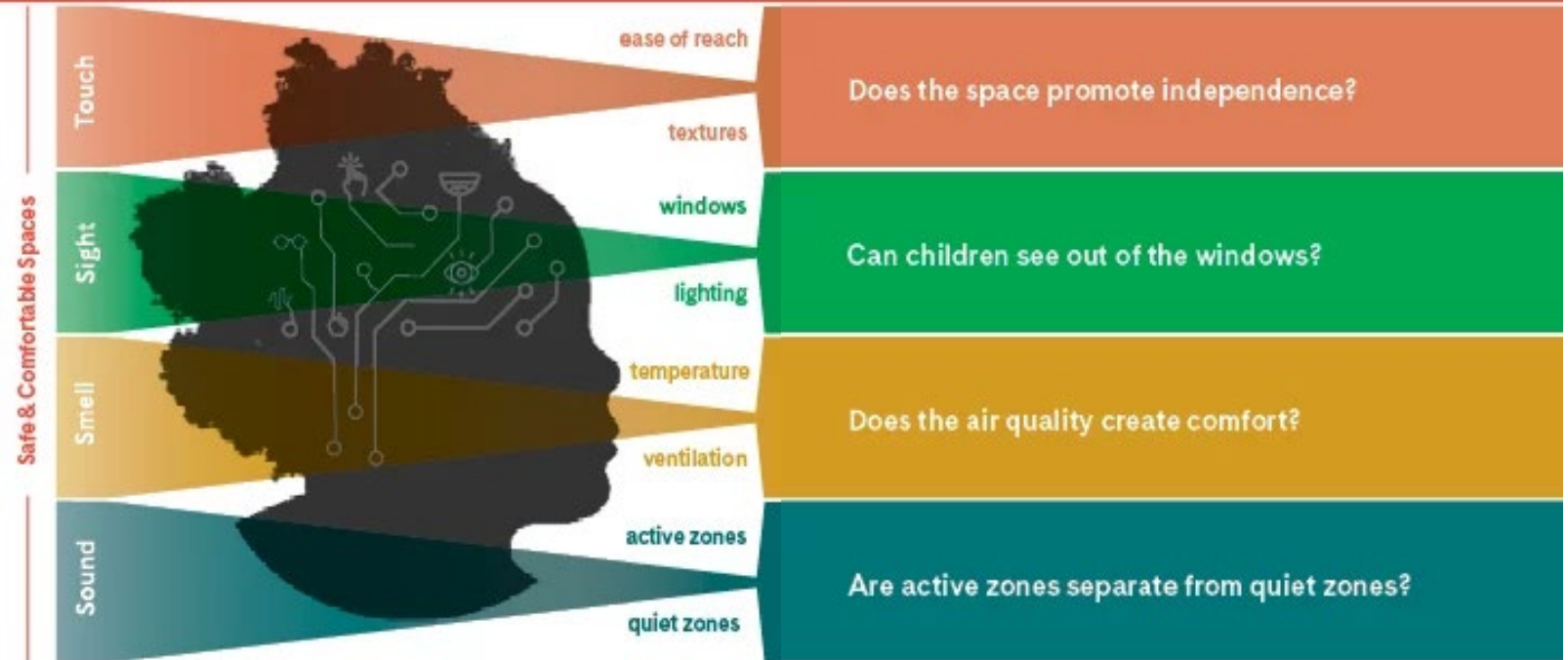
- Remove barriers (i.e. zoning, parking)
- Improve existing space
- Utilize empty spaces
- Create a facilities fund
- Finance - repair, renovation, plan, expansion, redevelopment and development

*The U.S. Department Health and Human Services Office of the Inspector General, in an investigation across 10 states, found that 96 percent of child care programs receiving Child Care and Development Fund dollars had one or more potentially hazardous conditions, such as broken or unlocked gates, water damage, or chemicals within reach of young children (Bipartisan Policy Center, 2019).*

# Early childhood facilities support brain development

Facility architecture impacts brain architecture.

How can we ensure that the learning environment stimulates brain development?





# Workforce

## We need:

- Training
- Wages & Incentives
- Pathways
- Remove barriers

**One in every 110 U.S. workers –  
and one in every 55 working  
women – makes a living in early  
childhood education and care  
(US Department of Treasury).**

# Economic impact

In terms of jobs, 19,019 employees in the child care sector are estimated to support about 5,995 workers in other industries for a total jobs impact of **25,014**.

The **\$349 million** in employee compensation and proprietors' earnings generated directly within the child care industry is estimated to support about \$206.9 million in additional earnings across the state for a total earnings impact of \$556 million.

**\$496 million** in direct revenue generated within the market-based child care industry



Children's  
Institute

# Thank you!

Kali Thorne Ladd  
Chief Executive Officer  
[kali@childinst.org](mailto:kali@childinst.org)

Visit [childinst.org](https://childinst.org) to get our latest news in your inbox!

Connect with us on social media



@childrensinst



@childinst



Children's Institute

